

## Original Research Article

# Chemical Composition of Lipophilic Fractions of Raw Material *Crataegus Rivularis* Nutt

---

### ABSTRACT

**Aims:** study of the composition of lipophilic substances in the raw materials of *Crataegus rivularis* Nutt.

**Study design:** experimental laboratory studies of dry plant materials.

**Place and Duration of Study:** Bashkir State Medical University, Izhevsk State Medical Academy, Volga Research Medical University and Ural Branch of the Russian Academy of Sciences from August 2021 to May 2022.

**Methodology:** Using gas chromatography with a mass-selective detector, lipophilic fractions of the fruits, shoots, flowers, leaves and fruits of riverine hawthorn, harvested in 2021 in the South Ural Botanical Garden-Institute, were studied.

**Results:** In general, the shoots and leaves of *Crataegus rivularis* accumulate compounds of the class of steroids, phytosterols, terpenoids, saponins and phenolic compounds, which suggests that the raw material may have additional pharmacological properties, such as hypocholesterolemic and antioxidant.

**Conclusion:** The results obtained show the good prospects for further studies of the composition of *hawthorn* extracts to expand the possibilities of phytotherapy.

*Keywords:* hawthorn, gas chromatography, plant extract, lipophilic fractions.

### 1. INTRODUCTION

*Crataegus* L., a genus of plants known as hawthorn, belongs to the family Rosaceae, is a shrub and tree, including about 280 species. Hawthorns grow in temperate zones and are widely distributed in Europe, East Asia, and North America [1,2]. Hawthorn has been used since ancient times in folk medicine, and its positive effect on the cardiovascular system was described by Dioscorides in the first century [3]. In the Russian Federation, the use of hawthorn fruits and flowers is allowed for medical use, while a number of foreign countries also use hawthorn shoots and leaves in medical practice. Thus, a number of European countries, including China, contain some types of hawthorn and raw materials based on them in their pharmacopoeias [4,5]. In addition, it is worth mentioning the range of pharmacological properties of hawthorn: in Europe and the USA, hawthorn extracts are used as adjunctive therapy in patients with congestive heart failure. There is evidence of the clinical use of hawthorn extracts as an adjuvant therapy in chronic heart failure, an antiarrhythmic effect of both fruits and extracts from hawthorn shoots has been noted. The hypotensive potential of hawthorn phenolic fractions has been studied *in vitro*, in animal models and in clinical studies [6-13]. Each type of plant material is characterized by the accumulation of a large number of groups of biologically active substances with a variety of biological properties. Having identified the component composition of each of the groups of biologically active substances, establishing their chemical structure, it seems possible to predict their biological activity, and after isolation and purification, to investigate the pharmacological properties. One of the groups of biologically active substances contained in hawthorn and of practical interest are lipophilic substances (essential oils, sterols, fatty acids, pigments, and others). It is worth noting a wide range of their pharmacological

characteristics, such as anti-atherosclerotic, hypolipidemic, wound healing, antibacterial and antioxidant effects [6-13]. All this confirms the expediency of isolation, identification and further studies of lipophilic substances contained in plant materials in order to expand the range of herbal products.

## 2. MATERIAL AND METHODS

The objects of study were shoots, leaves, flowers and fruits of *Crataegus rivularis* Nutt. – common hawthorn from the Rosaceae family, identification number according to USDA data – CRR1 L48 [14]. Raw materials were harvested during various periods of the plant's vegetation in the South Ural Botanical Garden-Institute, a separate structural subdivision of the Federal State Budgetary Scientific Institution of the Ural Federal Research Center of the Russian Academy of Sciences, Ufa, the Republic of Bashkortostan, GPS coordinates: 54.727903233987, 56.007758539664. The collection of shoots, leaves and flowers was carried out in the first half of May, in 2020, in the morning. Fruit picking was carried out in the first half of September 2020 in the morning. Raw materials were harvested manually in dry, warm, sunny weather at an outdoor temperature of +20 - +25 °C, since temperature is an important factor in the physicochemical interaction [15,16]. The collected raw materials were sorted, dried by the air-shadow method in a dry, cool room without direct sunlight for 7 days, and then packed in paper bags. Studies of the composition of plant raw materials were carried out from August 2021 to May 2022. The storage of raw materials was carried out in a dry and dark room at an air temperature of 18 °C and a humidity of 45%. [17,18].

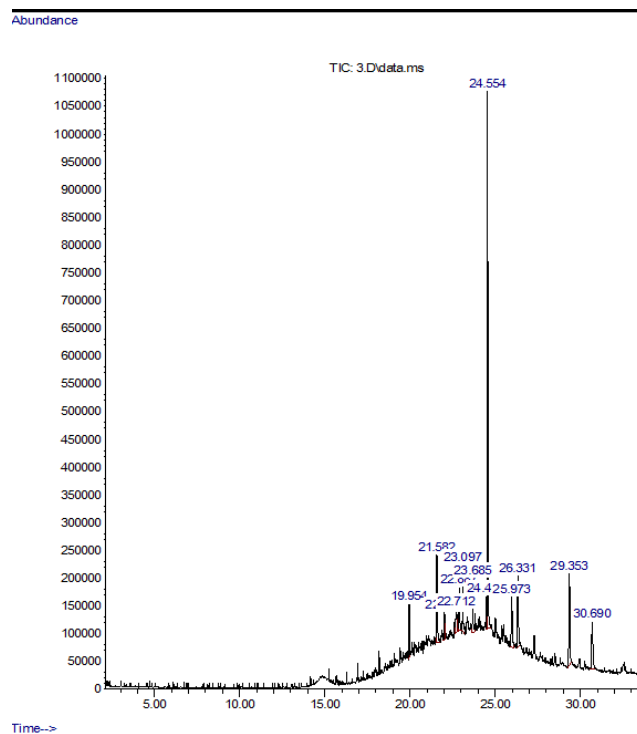
Lipophilic fractions were obtained from dried samples of shoots, leaves, flowers and fruits of *Crataegus rivularis*. The extraction of lipophilic substances was carried out by a single maceration of 5.0 g of crushed raw materials (accurately weighed with a particle size passing through a sieve with a hole diameter of 2 mm) with petroleum ether in a ratio of 1:10 by heating in a boiling water bath under reflux for 2 hours. The composition of the lipophilic fractions of the obtained extracts from the raw materials of *Crataegus rivularis* was identified using the gas chromatograph with a mass selective detector (GC-MS). The fractions were differentiated into individual components on a Maestro GC7820 gas chromatograph with a G4513A autoinjector, an Agilent Technologies 5975 mass selective detector. 1 ml/min, temperature gradient: 60°C–2 min, then the heating rate was 5°/min. up to 290 °C, holding time at the initial temperature - 2 minutes, holding time at the final temperature - 5 minutes; injector temperature 280 °C, injected sample volume 1 µl. The detector was used in the electronic impact ionisation mode (70 eV), the spectra were recorded in the scanning mode of ion current. Detection of the extracted compounds of lipophilic extracts was performed in comparison with library mass spectra. The publication presents data of identified compounds with a coefficient of similarity to library spectra of at least 80%.

## 3. RESULTS

As a result of the analysis of the lipophilic fraction of the shoots of *Crataegus rivularis* by gas chromatography with mass spectrometric detection, 13 substances were found, 9 compounds were identified by coincidence with library mass spectra. The vast majority of identified compounds are hydrocarbons - alkanes (tricosane, pentacosane, eicosan, heptacosan. In addition, the presence of saponins ( $\alpha$ -amirin), phytosterols ( $\delta$ -sitosterol), celidoniol, phenolic compounds (Table 1), (Fig. 1)

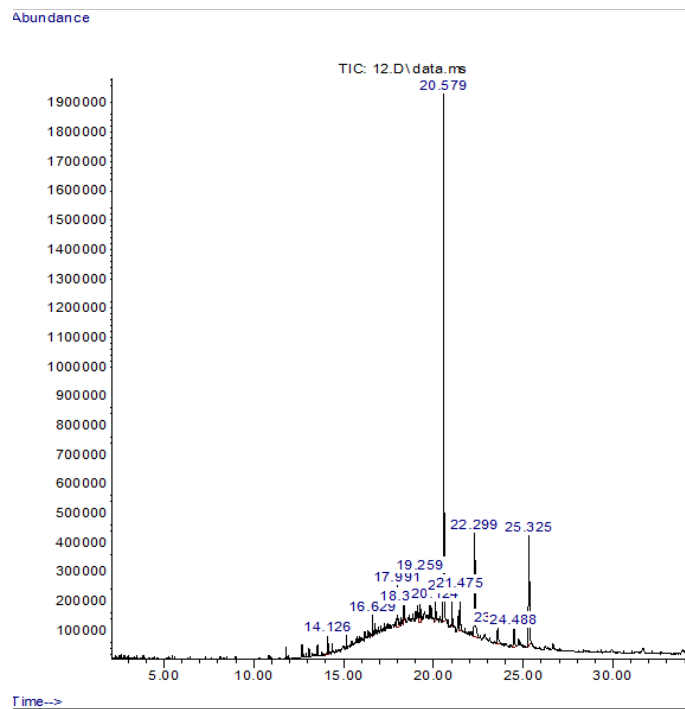
**Table 1. Components of lipophilic fractions of *Crataegus rivularis*.**

№ of the compound	Components of lipophilic fractions	Retention time, min	Quantitative content of compounds in the sample, %			
			Shoots	Leaves	Flowers	Fruit
1.	Benzene	2.524				0.474
2.	2-(4-methyl-3-cyclohexen-1-yl)-2-propanol)	6.358			1.550	
3.	Geraniol	7.087			1.260	
4.	Thymol	7.531			6.181	
5.	$\alpha$ -terpinolene	8.251			4.602	
6.	Geraniol acetate	8.583			3.592	
7.	Dibutyl phthalate	14.126		14.125	0.696	
8.	Genikosan	15.152			0.978	
9.	Docosan	17.992		4.296		
10.	Glycine	18.356		1.003		
11.	Octadecan	19.877				0.189
12.	Tricosan	19.958	2.676	1.049	3.119	
13.	Squalene	20.128		1.769		
14.	$\delta$ -tocopherol	21.042		2.552		
15.	Hexacosene	21.479		4.373		
16.	Pentacosan	21.584	6.379	42.145		
17.	Hexadecane	22.296		15.066		
18.	Eikosan	22.708	3.091		4.989	0.468
19.	Heptacosan	23.097	5.188	4.303		0.171
20.	Octabenzone	23.687	4.087			
21.	Celidoniol	24.553	36.826		37.585	0.260
22.	$\delta$ -sitosterol	25.321	7.028	16.183	7.732	
23.	$\beta$ -amirin	25.912			1.871	
24.	$\beta$ -D-dihydrofucosterol	29.350	12.273			
25.	$\alpha$ -amirin	30.693	7.215		10.132	



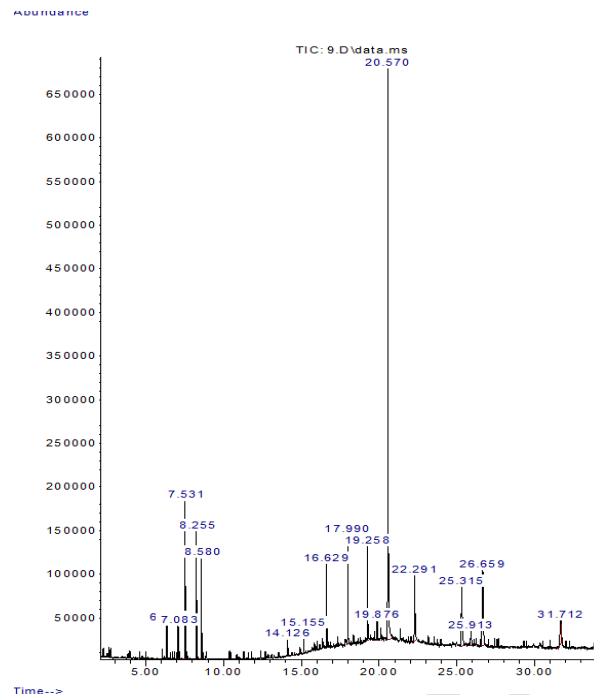
**Fig. 1. GC-gramma of lipophilic fractions from shoots of *Crataegus rivularis*.**

In the lipophilic fraction of the leaves of *Crataegus rivularis*, 13 compounds were also found, 11 were identified (Table 1). It has been established that the leaves also contain hydrocarbons, phytosterols ( $\beta$ -stigmasterol,  $\delta$ -sitosterol), aliphatic amino acids (glycine), triterpene hydrocarbons (squalene), tocopherols ( $\delta$ -tocopherol) (Fig. 2)



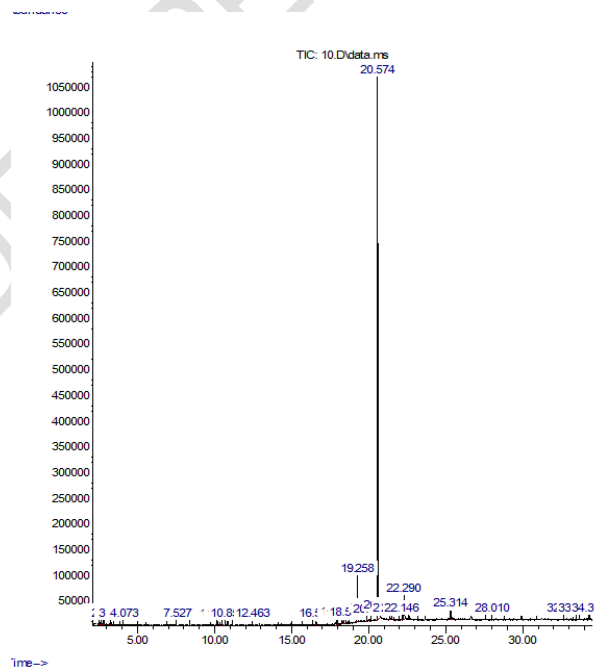
**Fig. 2. GC-gramma of lipophilic fractions from leaves of *Crataegus rivularis*.**

In the flowers of *Crataegus rivularis*, the presence of 18 volatile compounds was detected, of which 13 were recognized. The presence of a number of hydrocarbons (eicosan, tricosan, octadecane, etc.), essential oil components - esters (2-(4-methyl-3-cyclohexene-1-yl)-2-propanol), monoterpene hydrocarbons ( $\alpha$ -terpinolene), aliphatic monoterpene alcohols (geraniol), aromatic alcohols (thymol), as well as celidoniol, phytosterols ( $\delta$ -sitosterol), triterpene saponins ( $\alpha$ -amirin and  $\beta$ - amyrin) (Fig. 3) (Table 1)



**Fig. 3. GC-gramma of lipophilic fractions from flowers of *Crataegus rivularis*.**

The lipophilic fraction of the fruits of *Crataegus rivularis* contains about 31 compounds, of which only 5 were identified. Benzene derivatives, hydrocarbons, and celidoniol were found (Fig. 4) (Table 1)



**Fig. 4. GC-gramma of lipophilic fractions from fruit of *Crataegus rivularis*.**

## 4. DISCUSSION

Analyzing the data obtained, it might be noted that the greatest accumulation of hydrocarbons, saponins and steroid compounds is observed in the shoots and leaves of *Crataegus rivularis*: 13 substances were found, 9 compounds were identified by coincidence with library mass spectra. The vast majority of identified compounds are hydrocarbons - alkanes (tricosane, pentacosane, eicosan, heptacosan. In addition, the presence of saponins ( $\alpha$ -amirin), phytosterols ( $\delta$ -sitosterol), celidoniol, phenolic compounds (Table 1), (Fig. 1). The flowers mainly accumulate volatile aromatic compounds, mainly components of the essential oil, while the method of extracting the lipophilic fraction by maceration with petroleum ether turned out to be the most suitable for the flowers of *Crataegus rivularis*, since the highest extraction of volatile substances and a high signal intensity are observed. The fruits of *Crataegus rivularis* with this method of extracting lipophilic compounds do not show an active accumulation of such substances, therefore, in further studies, it is necessary to consider other organic solvents and extraction modes.

## 5. CONCLUSION

The lipophilic fractions of shoots, leaves, flowers and fruits of *Crataegus rivularis* isolated by maceration with petroleum ether were studied by gas chromatography with mass spectrometric detection. It has been shown that the shoots and leaves of *Crataegus rivularis* accumulate compounds of the class of steroids, phytosterols, terpenoids, saponins and phenolic compounds. This suggests that vegetable raw materials may have hypocholesterolemic and antioxidant effects [19,20]. The obtained results testify to the expediency of further research of this species both in order to expand the scope of hawthorns and to introduce a new species into medical practice. This search direction is promising due to the fact that hawthorn extract has low toxicity and high safety [21].

### COMPETING INTERESTS:

Authors have declared that they have no known competing financial interests OR non-financial interests OR personal relationships that could have appeared to influence the work reported in this paper.

## REFERENCES

1. Du X, Zhang X, Bu H, Zhang T, Lao Y, Dong W. Molecular analysis of evolution and origins of cultivated hawthorn (*Crataegus* spp.) and related species in China. *Frontiers in Plant Science*. 2019;10:443. <https://doi.org/10.3389/fpls.2019.00443>
2. Wu L, Cui Y, Wang Q, Xu Z, Wang Y, Lin Y, Song J, Yao H. Identification and phylogenetic analysis of five *Crataegus* species (Rosaceae) based on complete chloroplast genomes. *Planta*. 2021;254(1):14. <https://doi.org/10.1007/s00425-021-03667-4>
3. Petrovska BB. Historical review of medicinal plants' usage. *Pharmacognosy Reviews*. 2012;6(11):1–5. <https://doi.org/10.4103/0973-7847.95849>
4. Morozova NV, Kurkin VA, Pravdivtseva OE. Standardization of medicinal plants of the genus hawthorn *Crataegus* L. *Pharmacy & Pharmacology*. 2018;6(2):104-120. DOI:10.19163/2307-9266-2018-6-2-104-120. (Russia)
5. Wu M, Liu L, Xing Y, Yang S, Li H, Cao Y. Roles and mechanisms of hawthorn and its extracts on atherosclerosis: A review. *Frontiers in Pharmacology*. 2020;11:118. <https://doi.org/10.3389/fphar.2020.00118>

6. Halliwell B. Free radicals and antioxidants: updating a personal view. *Nutrition Reviews*. 2012;70(5):257–265. <https://doi.org/10.1111/j.1753-4887.2012.00476.x>
7. Mozaffarieh M, Sacu S, Wedrich A. The role of the carotenoids, lutein and zeaxanthin, in protecting against age-related macular degeneration: a review based on controversial evidence. *Nutrition Journal*. 2003;2:20. <https://doi.org/10.1186/1475-2891-2-20>
8. Ipatova OM, Prozorovskaia NN, Baranova VS, Guseva DA. Biologicheskaiia aktivnost' l'nianogo masla kak istochnika omega-3 al'fa-linolenovoï kisloty [Biological activity of linseed oil as the source of omega-3 alpha-linolenic acid]. *Biomeditsinskaia Khimiia*. 2004;50(1)2:5–43. (Russia)
9. Ito K, Kikuchi S, Yamada M, Torii S, Katagiri M. Effect of the  $\alpha$ -linolenic acid enriched diet on atopic dermatitis. *The Japanese Journal of Pediatric Allergy and Clinical Immunology*. 1992;6:87–91. DOI: 10.3388/jspaci.6.87
10. Kawasaki M, Toyoda M, Teshima R, Sawada J, Saito Y. Effect of  $\alpha$ -Linolenic Acid on the Metabolism of  $\omega$ -3 and  $\omega$ -6 Polyunsaturated Fatty Acids and Histamine Release in RBL-2H3 Cells. *Biological and Pharmaceutical Bulletin*. 1994;17:1321–1325. DOI: 10.1248/bpb.17.1321
11. Khaliullin FA, Shabalina YV, Samorodov AV, Kamilov FK. Synthesis and Antiaggregant Activity of 2-[3-Methyl-1-Ethylxanthinyl-8-Thio]Acetic Acid Salts Containing a Thietane Ring. *Pharm Chem J*. 2018;52(5):52–56. DOI: 10.1007/s11094-018-1764-y
12. Bogdanov AV, Andreeva OV, Belenok MG, et al. Synthesis of Triazolylisatins Glycoconjugates and Some Ammonium Hydrazones on Their Basis. *Russ J Gen Chem* 2021;91(7):1282–1291. DOI: 10.1134/S1070363221070045
13. Ye L, Chen X, Wang M, et al. Curcumin analogue C66 attenuates obesity-induced myocardial injury by inhibiting JNK-mediated inflammation. *Biomed Pharmacother*. 2021;143:112-121. DOI: 10.1016/j.biopha.2021.112121
14. Martinelli F, Perrone A, Yousefi S, Papini A, Castiglione S, Guarino F, Cicatelli A, Aelaei M, Arad N, Gholami M, Salami SA. Botanical, phytochemical, anti-microbial and pharmaceutical characteristics of Hawthorn (*Crataegus monogyna* Jacq.), Rosaceae. *Molecules*. (Basel, Switzerland). 2021;26(23):7266. <https://doi.org/10.3390/molecules26237266>
15. Urakov AL. Thermology is the basis of medicine since ancient times. *Thermology International*. 2017;27(2):78-79.
16. Urakov AL. Development of new materials and structures based on managed physical-chemical factors of local interaction. *IOP Conf. Ser.: Mater. Sci. Eng*. 2016;123(115):010083. DOI:10.1088/1757-899X/123/1/012008
17. State Pharmacopoeia of the Russian Federation XIV ed. V. I. Accessed 10 May 2022. Available: <http://www.femb.ru/femb/phar-macopea.php>
18. Urakov AL, Mustafin IG, Samorodov AV, Kamilov FK, Khaliullin FA. The off-label use of drugs for parenteral nutrition as a solvent of substances slightly soluble in water in pharmacological research. *Journal of Advanced Pharmaceutical Technology & Research*. 2018; 9(1):9–14. [https://doi.org/10.4103/japtr.JAPTR\\_280\\_17](https://doi.org/10.4103/japtr.JAPTR_280_17)
19. Belguith-Hadriche O, Bouaziz M, Jamoussi K, Simmonds MS, El Feki A, Makni-Ayedi F. Comparative study on hypocholesterolemic and antioxidant activities of various extracts of fenugreek seeds. *Food Chemistry*. 2013;138(2-3):1448–1453. <https://doi.org/10.1016/j.foodchem.2012.11.003>
20. Sun P, Zhao L, Zhang N, Zhou J, Zhang L, Wu W, Ji B, & Zhou F. (2021). Bioactivity of dietary polyphenols: The role in LDL-C lowering. *Foods*. (Basel, Switzerland). 2021;10(11):2666. <https://doi.org/10.3390/foods10112666>
21. Daniele C, Mazzanti G, Pittler MH, Ernst E. Adverse-event profile of *Crataegus* spp.: a systematic review. *Drug Safety*. 2006;29(6):523–535. <https://doi.org/10.2165/00002018-200629060-00005>