

NEUTROPHIL - LYMPHOCYTE RATIO AS A BIO- INFLAMMATORY PROGNOSTIC MARKER OF FETOMATERNAL OUTCOMES OF PRE-ECLAMPSIA: a narrative review

Dr. Neema Acharya¹, Dr Shazia Mohammad², Dr. Shirin Mohammad³, Dr. Sourya Acharya⁴, Dr. Samarth Shukla⁵

¹Department of Obstetrics and Gynaecology, Jawaharlal Nehru Medical College (DMIMSU), Sawangi, Wardha 442001, Maharashtra, India

²Department of Obstetrics and Gynaecology, Jawaharlal Nehru Medical College (DMIMSU), Sawangi, Wardha 442001, Maharashtra, India

³Medical Practitioner, Self-employed, Maharashtra, India

⁴Department of Medicine, Jawaharlal Nehru Medical College (DMIMSU), Sawangi, Wardha 442001, Maharashtra, India

⁵Department of Pathology, Jawaharlal Nehru Medical College (DMIMSU), Sawangi, Wardha 442001, Maharashtra, India

ABSTRACT:

BACKGROUND: Pre eclampsia & its related problems have potential contribution to maternal mortality & morbidity. Early diagnosis & appropriate management of pre eclampsia can prevent antenatal , intranatal & post natal complications associated with pre eclampsia. The neutrophil to lymphocyte ratio (NLR) which is derived from a complete blood count & dedifferentiation, is a straightforward inflammatory index (1). Pre-existing studies have shown that NLR is indicator of Pre- eclampsia.

Objective of this narrative review. In this we summarized the evidence regarding the clinical utility of NLR in pre eclampsia & its related complications.

METHODS: A comprehensive systematic search from PubMed, Embase, Cochrane Library, VIP database for relevant literature.

Sensitivity, specificity & other measures of accuracy of NLR for the diagnosis of PE were pooled.

Keywords: NLR, preeclampsia, fetomaternal outcomes, biomarker

INTRODUCTION: Why there is need to predict fetomaternal outcome ?

Preeclampsia affects 2–5% of births in the developed world, but it can affect up to 10% of pregnancies in underdeveloped nations, where emergency care is often insufficient or non-existent. As a result, we require a universally applicable & cheap test that would allow for pre-symptomatic identification in order to identify & monitor patients at risk, allowing us to offer the best prenatal care possible for these women & their children. A test like this would also be useful for confirming a confusing clinical diagnosis & future investigations looking into preventative or temporizing medications.

A screening test must be sensitive & specific, as well as have a high positive predictive value, in order to be successful. Several intriguing markers, alone or in combination, have been developed recently that may meet these criteria. These statistics, on the other h&, were frequently derived from tiny case studies involving a limited number of people.

Before these promising indicators may be used in therapeutically relevant screening tests, large-scale prospective studies around the globe are needed to validate their sensitivity & specificity, as well as to assess their value in different subtypes of preeclampsia.

What is “PRE-ECLAMPSIA”?

Preeclampsia is a pregnancy-related multi-system disorder characterised by new onset hypertension (systolic & diastolic blood pressure of 140 & 90 mm Hg, respectively, on two occasions, at least 6 hours apart) & proteinuria (protein excretion of 300 mg in a 24-hour urine collection, or a dipstick of 2+) that appears after 20 weeks of pregnancy in previously normotensive women.

Edema, haemostasis disturbances, renal or hepatic failure, & the HELLP syndrome (hemolysis, increased liver enzymes, & low platelet counts) can all complicate the clinical picture, depending on the systemic involvement. Preeclampsia can have a mild or severe onset (systolic blood pressure 160 mmHg or diastolic blood pressure 110 mmHg, proteinuria >5 g/24 hours, oliguria, neurological symptoms, other clinical symptoms such as deranged liver function, thrombocytopenia 100 000 mm³, HELLP syndrome) & can progress to eclampsia in the most severe

cases. It can also appear as a maternal illness with normal foetal growth, or as a growth-restricted foetus (IUGR) or acute foetal distress.

Pathophysiology:

Although the exact cause of preeclampsia is unknown, it is thought to be complex. The placenta's important involvement in disease is a foregone conclusion.

Preeclampsia is thought to occur as a result of immunological maladaptation between the mother & the foetus during the initial weeks of pregnancy, resulting to a two-step problem development (Figure 1.) that can be summarized as following: in a first – asymptomatic – step, local aberrant fetomaternal immune interactions within the uterine wall lead to impaired tissue & arterial invasion by trophoblast cells. This causes the uterine spiral arteries to fail to convert, resulting in poor placental perfusion. Chronic hypoxia or alternating periods of hypoxia/reoxygenation inside the intervillous space are likely to enhance placental apoptosis & necrosis by causing tissue oxidative stress.

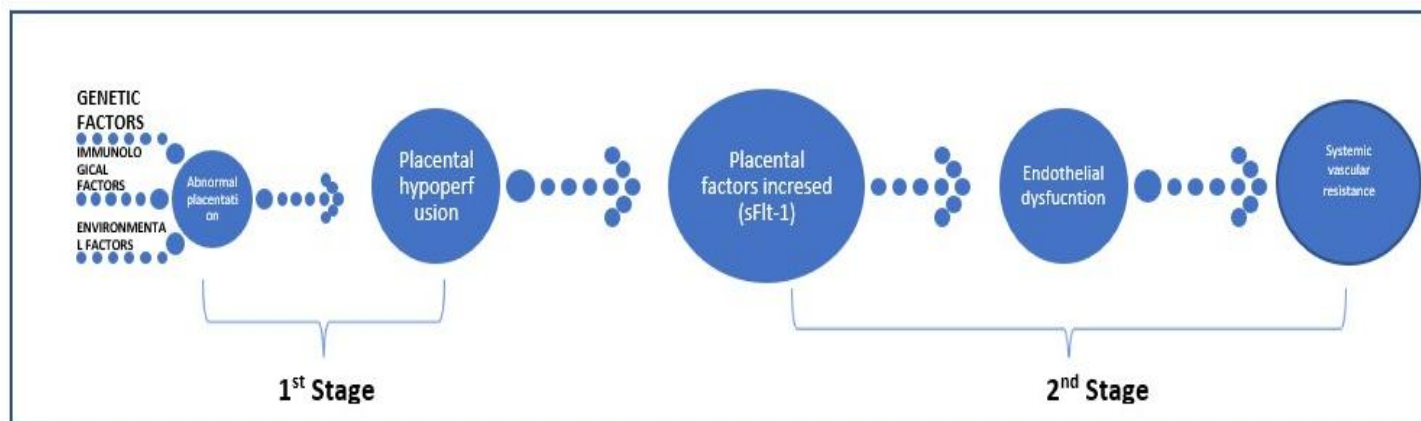


Figure 1.

Two-Stage Theory of Pre-eclampsia

In 2nd step, the maternal vascular & immune systems become overwhelmed by increased shedding of placental-produced debris, aberrant expression of pro-inflammatory, anti-angiogenic, & angiogenic factors, & monocyte & neutrophil activation, resulting in systemic endothelial cell dysfunction & an exaggerated inflammatory response (1, 9, 10). In the pathophysiology of PE, the neutrophil plays a significant role. When neutrophils move through the intervillous gap, they are exposed to oxidised lipids produced by the placenta (2–4).

This causes thrombocyte activation, vasoconstriction, hypertension, endothelial dysfunction, and end-organ ischemia. As a result, the clinical stage of PE is defined by hypertension, proteinuria, edema, headache, scotoma, coagulopathy, and renal & hepatic dysfunction. Pregnancy can result in systemic inflammation. In normal pregnancies, a shift toward Th2 (suppressor T-helper) cells leads to suppression of Th1 cytokines, permitting maternal immunological tolerance of the foetus; however, in PE, there is a shift toward the Th1 response, immune maladaptation, and hyper-inflammatory state.

Intrinsic failure in trophoblast differentiation (Figure 2) at various phases of ontogeny was thought to cause either a modest disease with a late start or IUGR worsened or not by maternal symptoms.

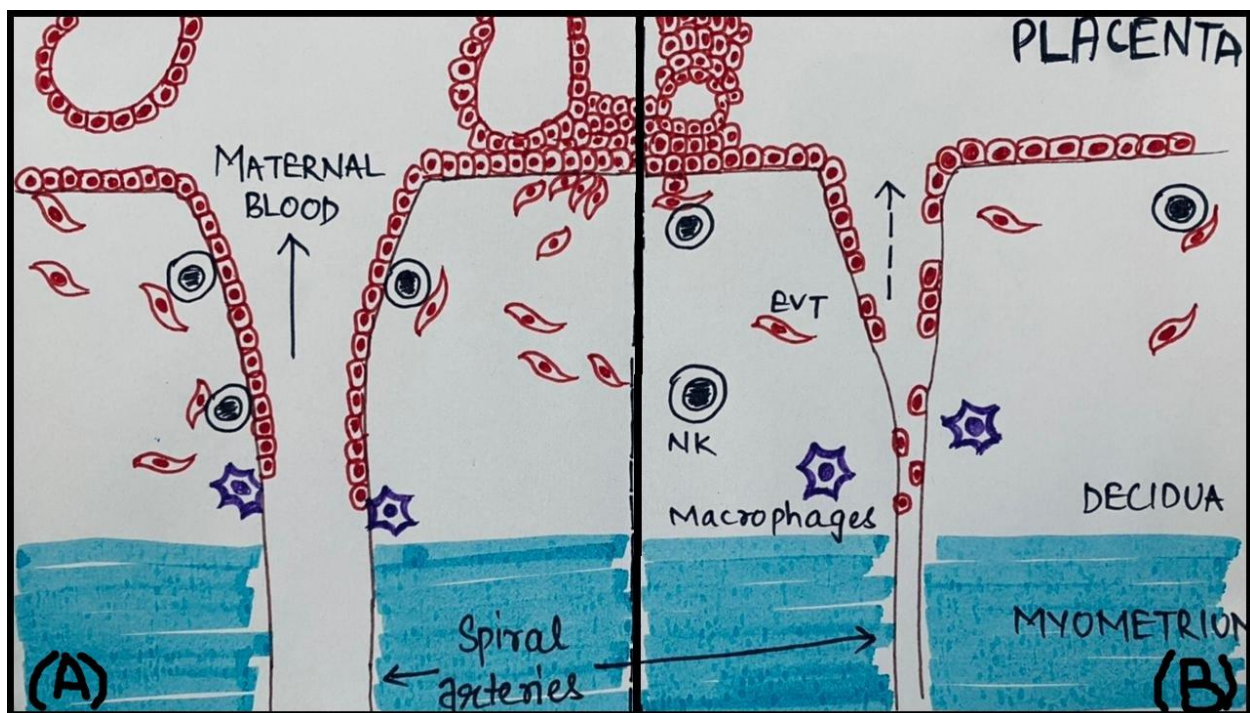


Figure 2.: Spiral arteries & trophoblast invasion in *healthy* (A) & *preeclamptic* (B) pregnancy.

Preeclampsia, on the other hand, may be caused by underlying maternal constitutional factors such as heredity, obesity, a faulty maternal clearance system, or, in rare cases, inflammatory systems ([12](#)).

Preeclampsia is characterised by shallow trophoblast invasion and aberrant vascular remodelling, which leads to a reduction in maternal blood supply and, as a

result, a decrease in foetal growth. The disease's development might be aided by the incapacity of decidual natural killer (NK) cells and macrophages (MΦ) to attract trophoblast cells and drive angiogenesis. EVT is a kind of extravillous trophoblast.

MATERIALS & METHODS:

Study Search

The present study was conducted following the criteria of Preferred Reporting Items for Systematic Reviews and Meta Analyses (PRISMA).

We conducted a literature search using PubMed, The Cochrane Library, EMBASE, Chinese National Knowledge Infrastructure (CNKI), Wanfang Medical Network, VIP (VIP), and China Biomedical Literature Database (CBM) without language limitation. The search time limitation was from the establishment of the database to May 31, 2018. The index words were as follows: “pre-eclampsia” “neutrophil-to-lymphocyte” “neutrophil-lymphocyte” “NLR” “Neutrophil/lymphocyte ratio”. All searches used a combination of subject words and free words. All search strategies were determined by multiple pre-searches, and the search formulas were adjusted according to the characteristics of each database.

Study Selection

A total of 102 related articles were obtained in the initial inspection. According to inclusion and exclusion criteria, 32 studies were excluded due to duplication, 50 studies were excluded as irrelevant study. After reading full-text articles, 6 studies were excluded for lacking necessary data. At last, 14 studies were determined to be eligible for meta-analysis (Fig. 1).

Identification

Records identified through searching
(n=102)

Additional records identified through other sources
(n=0)

Records after duplicates removed
(n=70)

Screening

Records screened
(n=70)

Records excluded
(n=50)

Eligibility

Full-text articles assessed for eligibility
(n=20)

Full-text articles excluded, with reasons
(n=6)

Included

Studies included in qualitative synthesis
(n=14)

Studies included in quantitative synthesis
(n=14)

- REASONS FOR EXCLUSION:**
1. Unsuitable publication types: Case reports, meetings, abstracts, letters, Different languages
 2. Animal experiments or non-clinical studies
 3. Incomplete data without original text
 4. Studies overlapped with included

NEUTROPHIL-LYMPHOCYTE RATIO AS A BIOMARKER OF PRE-ECLAMPSIA:

1. Neutrophil-Lymphocyte Ratio as a Predictive Biomarker of Pre-eclampsia:

The neutrophil-to-lymphocyte ratio (NLR) is a new metric for assessing the systemic inflammatory response (SIR). NLR's predictive value for a multitude of diseases, including cancer and heart disease, has gained a lot of press. The amount of leukocytes in PE is greater than in a normal pregnancy. A decrease in lymphocytes and an increase in neutrophils induce increased NLR in PE. In women with PE, neutrophils are likely to get activated when they migrate through the intervillous area and are exposed to oxidised lipids produced by the placenta (5,6). Oxidized lipids, which are potent neutrophil activators, induce the formation of COX-2, which controls the release of thromboxane, TNF, and superoxide (Vaughan et al., 2006; Vaughan & Walsh, 2005). The neutrophils of preeclamptic women generate far more COX-2 than the neutrophils of healthy pregnant or non-pregnant women (7).

Many studies have shown that macrophages have a role in atherosclerotic plaque as foam cells. Lymphocytes are immune cells that assist the body fight illness by producing antibodies. Neutrophils are commonly thought to be the first line of

defence against infection at the wound site, however new study has discovered that neutrophils infiltrate systemic vascular tissue in pre-eclampsia patients, causing vascular inflammation (8,9). Other types of leukocytes may enter the maternal vascular system and produce vascular dysfunction in pre-eclamptic mothers.

NLR is a low-cost inflammatory biomarker that has been studied for its therapeutic efficacy during pregnancy in various studies.

Two cross-sectional studies published in 2014 looked at the link between NLR and PE, however the results were equivocal (10,11). In one study, NLR was shown to be higher in PE patients than in normal pregnant women, and increased NLR was found to be associated to PE independently after correcting for confounding factors (10). Another study looked at the NLR level before the caesarean delivery, however the higher NLR in PE was not seen (11). Following that, other cross-sectional studies looked at the link between PE & NLR, with mixed results (4,12–17). Some studies found that NLR was higher in PE than in normal pregnant women (4,12,14–18), while one study failed to demonstrate a significant difference (19). In addition, some of the studies indicated that NLR was associated with severity (4,12,16), outcome (17), & proteinuria (4) of PE.

Four case-control studies are presently looking at the link between NLR & PE (15,20–22). Two of these four studies indicated that increased NLR in first (20) & second trimester (22) was a risk factor for PE. However, the authors of one big research (118 PE patients & 1,495 normal pregnant women) failed to find that NLR was raised in PE patients before the twentieth pregnancy week (15).

NLR is a promising prognostic biomarker, according to *Kang et al.*, 2020, since it is highly raised in pre-eclamptic pregnancies, especially in severe ones (23). Certain features, however, must be investigated further in order to completely understand its therapeutic value. To correctly identify the function of NLR in PE, further large-scale prospective cohort studies are required. The start & severity of the condition, as well as the existence of prenatal growth restriction, should all be considered when separating cases. NLR should be assessed in a systematic manner during pregnancy to determine the best gestational age for sampling. In order to examine the prediction usefulness of this marker, cut-off values should be created. These parameters should be predetermined to avoid overestimation of diagnostic performance. Finally, NLR should be examined in combination with traditional PE indicators & put into combined models to provide the most accurate disease prediction.

2. Neutrophil-Lymphocyte Ratio as a Prognostic Biomarker of Pre-eclampsia:

The BMI, the woman's age, uterine & cervical abnormalities, & lifestyle choices have all been connected to pregnancy. Many complications, including gestational diabetes mellitus, hypertensive disorders of pregnancy, & preeclampsia, as well as infectious & systemic pathological conditions like immunological, endocrine, cardiovascular, hematological, metabolic, gastroenterological, oncological, & kidney diseases, can jeopardize pregnancy.

When assessed in the first trimester of pregnancy, the neutrophil to lymphocytes ratio (NLR) has been linked to pregnancy problems, with a higher value indicating underlying inflammatory processes. When compared to normal pregnancies, NLR has been observed to be higher in preeclampsia, especially in its more severe symptoms (4), as a result, it has been proposed that it can be utilized as a valid biomarker for illness detection in the first trimester of pregnancy (20,24).

Women with pregnant diabetes mellitus, intrahepatic cholestasis, & hyperemesis gravidarum have all been found to have higher NLR readings (24).

Apart from pregnancy-related issues such as pre-eclampsia, NLR is employed as a predictive biomarker in illnesses such as metastatic gall bladder cancer, sepsis, stroke, metabolic syndrome, & most recently, COVID-19 sickness (25).

NLR is being researched to see if it may be used as a prognostic tool in hypertensive diseases of pregnancy, particularly pre-eclampsia. In addition, the influence of a higher NLR ratio on various fetomaternal outcomes in preeclamptic women is being researched extensively.

3. Various other Biomarkers used for Prediction of Pre-eclampsia:

Biochemical Marker	Plasma Concentrations			Reported combinations for prediction	Altered levels are also correlated with
	1° trimester	2° trimester	Manifest preeclampsia		
sflt-1	---			- sEng, PlGF, VEGF, - Ultrasound	---
sEng	---			- sflt-1, PlGF, - Ultrasound	- IUGR - HEELP - SGA
PlGF				- sflt-1, sEng - Ultrasound	- IUGR - Preterm delivery - SGA
PP-13					
P-Selectin				Activin A, sflt-1	---
Cell-free fetal DNA				Inhibin A	- IUGR - polyhydramnios - trisomy 21 - preterm labour
Cell free DNA	---	---		---	- trisomy 21 - trisomy 18 - SGA
ADAM12		---	---		
PTX3				---	- IUGR - birthweight - type-2 diabetes m.
PAPP-A					
Visfatin	---				

Table 1.: Biomarkers used in conjunction with Pre-eclampsia

Biomarkers combined with uterine artery Doppler screening appear to be a promising screening method nowadays.

Various biophysical & biochemical indicators have been studied for many years, based on pathophysiological observations made in cases of preeclampsia, such as placental malfunction, a broad inflammatory response, endothelial dysfunction, & coagulation system activation.

COMPETING INTERESTS DISCLAIMER:

Authors have declared that no competing interests exist. The products used for this research are commonly and predominantly use products in our area of research and country. There is absolutely no conflict of interest between the

authors and producers of the products because we do not intend to use these products as an avenue for any litigation but for the advancement of knowledge. Also, the research was not funded by the producing company rather it was funded by personal efforts of the authors.

DISCUSSION:

Despite the inadequacy of existing preventative & therapeutic options for preeclampsia, the hunt for noninvasive blood-borne or urine biomarkers that might forecast the onset or aid in the identification of this life-threatening pregnant condition remains critical. The availability of such indicators might have a significant influence not only on the medical care of pregnant women & their children (for example, referral to a tertiary centre), but also on the health expenses associated with this poor medical state. As a result, identifying pregnant women at risk for preeclampsia as early as possible is critical in order to apply preventative measures.

CONCLUSION:

PE is a multisystem ailment, & the disease's pathogenetic phases are yet unknown. Because delivery is the sole therapeutic option, early detection & prevention are critical to minimize the fetal & maternal effects, particularly in the case of preterm PE. As a result, there is increased interest in studying the significance of new biomarkers in identifying high-risk pregnant women & shedding insight on the disorder's etiology. Our data imply that the NLR value is greater in PE patients, particularly those with severe cases.

BIBLIOGRAPHY:

1. Hai L, Hu Z-D. The clinical utility of neutrophil to lymphocyte ratio in pregnancy related complications: a mini-review. J Lab Precis Med [Internet]. 2019 Nov 15 [cited 2020 Oct 21];5(0). Available from: <http://jlp.m.amegroups.com/article/view/5204>

2. Barden A, Ritchie J, Walters B, Michael C, Rivera J, Mori T, et al. Study of plasma factors associated with neutrophil activation & lipid peroxidation in preeclampsia. *Hypertens Dallas Tex* 1979. 2001 Oct;38(4):803–8.
3. Mellembakken JR, Aukrust P, Olafsen MK, Uel& T, Hestdal K, Videm V. Activation of leukocytes during the uteroplacental passage in preeclampsia. *Hypertens Dallas Tex* 1979. 2002 Jan;39(1):155–60.
4. Serin S, Avcı F, Ercan O, Köstü B, Bakacak M, Kıran H. Is neutrophil/lymphocyte ratio a useful marker to predict the severity of pre-eclampsia? *Pregnancy Hypertens Int J Womens Cardiovasc Health*. 2016 Jan 1;6(1):22–5.
5. Walsh SW. Maternal-placental interactions of oxidative stress & antioxidants in preeclampsia. *Semin Reprod Endocrinol*. 1998;16(1):93–104.
6. Walsh SW, Wang Y. Secretion of lipid peroxides by the human placenta. *Am J Obstet Gynecol*. 1993 Dec;169(6):1462–6.
7. Bachawaty T, Washington SL, Walsh SW. Neutrophil Expression of Cyclooxygenase-2 in Preeclampsia. *Reprod Sci Thous& Oaks Calif*. 2010 May;17(5):465–70.
8. Leik CE, Walsh SW. Neutrophils infiltrate resistance-sized vessels of subcutaneous fat in women with preeclampsia. *Hypertens Dallas Tex* 1979. 2004 Jul;44(1):72–7.
9. Shah TJ, Walsh SW. Activation of NF-kappaB & expression of COX-2 in association with neutrophil infiltration in systemic vascular tissue of women with preeclampsia. *Am J Obstet Gynecol*. 2007 Jan;196(1):48.e1-8.
10. Oylumlu M, Ozler A, Yildiz A, Oylumlu M, Acet H, Polat N, et al. New inflammatory markers in pre-eclampsia: echocardiographic epicardial fat thickness & neutrophil to lymphocyte ratio. *Clin Exp Hypertens*. 2014 Nov 1;36(7):503–7.
11. Yavuzcan A, Caglar M, Ustun Y, Dilbaz S, Yidiz E, Ozbilgec S, et al. Mean Platelet Volume, Neutrophil-Lymphocyte Ratio & Platelet-Lymphocyte Ratio in Severe Preeclampsia. *Ginekol Pol [Internet]*. 2014 [cited 2020 Oct 21];85(3). Available from: https://journals.viamedica.pl/ginekologia_polska/article/view/45910

12. Cakmak HA, Dincgez Cakmak B, Abide Yayla C, Inci Coskun E, Erturk M, Keles I. Assessment of relationships between novel inflammatory markers & presence & severity of preeclampsia: Epicardial fat thickness, pentraxin-3, & neutrophil-to-lymphocyte ratio. *Hypertens Pregnancy*. 2017 Aug;36(3):233–9.
13. Gogoi P, Sinha P, Gupta B, Fimal P, Rajaram S. Neutrophil-to-lymphocyte ratio & platelet indices in pre-eclampsia. *Int J Gynaecol Obstet Off Organ Int Fed Gynaecol Obstet*. 2019 Jan;144(1):16–20.
14. Kurtoglu E, Kokcu A, Celik H, Tosun M, Malatyalioglu E. May ratio of neutrophil to lymphocyte be useful in predicting the risk of developing preeclampsia? A pilot study. *J Matern-Fetal Neonatal Med Off J Eur Assoc Perinat Med Fed Asia Ocean Perinat Soc Int Soc Perinat Obstet*. 2015 Jan;28(1):97–9.
15. Mannaerts D, Heyvaert S, De Cordt C, Macken C, Loos C, Jacquemyn Y. Are neutrophil/lymphocyte ratio (NLR), platelet/lymphocyte ratio (PLR), &/or mean platelet volume (MPV) clinically useful as predictive parameters for preeclampsia? *J Matern-Fetal Neonatal Med Off J Eur Assoc Perinat Med Fed Asia Ocean Perinat Soc Int Soc Perinat Obstet*. 2019 May;32(9):1412–9.
16. Sitotaw C, Asrie F, Melku M. Evaluation of platelet & white cell parameters among pregnant women with Preeclampsia in Gondar, Northwest Ethiopia: A comparative cross-sectional study. *Pregnancy Hypertens*. 2018 Jul;13:242–7.
17. Wang J, Zhu Q-W, Cheng X-Y, Liu J-Y, Zhang L-L, Tao Y-M, et al. Assessment efficacy of neutrophil-lymphocyte ratio & monocyte-lymphocyte ratio in preeclampsia. *J Reprod Immunol*. 2019;132:29–34.
18. Jeon YL, Lee W-I, Kang SY, Kim MH. Modified Complete Blood Count Indices as Predicting Markers of Preeclampsia from Gestational Hypertension: Neutrophil to Lymphocyte Ratio, Platelet to Lymphocyte Ratio, & Platelet to Neutrophil Ratio. *Clin Lab*. 2017 Nov 1;63(11):1897–902.
19. Yücel B, Ustun B. Neutrophil to lymphocyte ratio, platelet to lymphocyte ratio, mean platelet volume, red cell distribution width & plateletcrit in preeclampsia. *Pregnancy Hypertens Int J Womens Cardiovasc Health*. 2017 Jan 1;7:29–32.
20. Gezer C, Ekin A, Ertas IE, Ozeren M, Solmaz U, Mat E, et al. High first-trimester neutrophil-to-lymphocyte & platelet-to-lymphocyte ratios are indicators for early diagnosis of preeclampsia. *Ginekol Pol*. 2016;87(6):431–5.

21. Örgül G, Aydın Haklı D, Özten G, Fadiloğlu E, Tanacan A, Beksaç MS. First trimester complete blood cell indices in early & late onset preeclampsia. *Turk J Obstet Gynecol.* 2019 Jun;16(2):112–7.
22. Panwar M, Kumari A, Hp A, Arora R, Singh V, Bansiwali R. Raised neutrophil lymphocyte ratio & serum beta hCG level in early second trimester of pregnancy as predictors for development & severity of preeclampsia. *Drug Discov Ther.* 2019;13(1):34–7.
23. Kang Q, Li W, Yu N, Fan L, Zhang Y, Sha M, et al. Predictive role of neutrophil-to-lymphocyte ratio in preeclampsia: A meta-analysis including 3982 patients. *Pregnancy Hypertens.* 2020 Apr 1;20:111–8.
24. Kirbas A, Ersoy AO, Daglar K, Dikici T, Biberoglu EH, Kirbas O, et al. Prediction of Preeclampsia by First Trimester Combined Test & Simple Complete Blood Count Parameters. *J Clin Diagn Res JCDR.* 2015 Nov;9(11):QC20-23.
25. Basbus L, Lapidus MI, Martingano I, Puga MC, Pollán J. [Neutrophil to lymphocyte ratio as a prognostic marker in COVID-19]. *Medicina (Mex).* 2020;80 Suppl 3:31–6.