

ESTIMATION OF SOAKED CALIFORNIA BEARING RATIO OF A LATERITIC SOIL USING MATHEMATICAL MODEL

ABSTRACTS

California Bearing Ratio (CBR) test is a common laboratory test, performed to evaluate the shear strength and stiffness modulus of sub grade for the design of pavement. CBR test is a laborious test, therefore it is vital to develop the models for quick assessment of CBR. This study investigates the development of a mathematical model to estimate Soaked California Bearing Ratio of a lateritic soil. This research use Multiple Linear Regression (MLR) with R. studio software with a view to correlate Soaked California Bearing Ratio (SCBR) for the measured index properties. To achieve the objectives of this study, 20 soil samples were considered with 4 samples representing a Local government studio Software version has been used to develop a mathematical model for the MLR. The experimental data and predictive models were developed in terms of liquid limit (LL), plasticity index (PI) Maximum Dry Density and percentages of fines, Gravel, and Sand respectively. The results from the index properties characterized the study area as Clayey soils (A-4, A-6 and A-7-5) and Silty or Clayey gravelling soils (A-2-6,A-2-7) according to AASHTO classification system The soil strength assessment indicates that the soils samples from all the Zones fell within the minimum dry density recommended for subgrade materials, stabilization is recommended for its suitability for either sub base or base course material for future contractor around this study area, this will savage haulage expenses when material are move from far distance to the site of work. The strengths of the developed Multiple Linear Regression (MLR) models have been examined in terms of regression coefficient of determination (R^2). It is found that the correlation give a predictive power of 70%. The residual plotted on histogram curve is symmetrical in nature indicating normality of residual value.

Keywords: Index properties; Multiple Linear Regression; Mathematical model; Soaked CBR, Senatorial Zone; and Coefficient of Determination.

1. INTRODUCTION

The strength of a soil to be used as a sub-grade in pavement is assessed from its California bearing ratio (CBR) value. If the CBR value of soil is low, the thickness of pavement will be high, which will result in high cost of construction and vice-versa. Subgrade is the most important part of a pavement structure, which should have a reasonable stiffness modulus and shear strength Faisal Iqbal et al., (2018). CBR (California Bearing Ratio) test is performed to evaluate stiffness modulus and shear strength of subgrade soils. However, CBR test is laborious and time consuming, particularly when soil is discovered to be unsuitable. In order to overcome this limitation, it may be appropriate to correlate CBR value of soils with its index properties like grain size analysis, Consistency limits, and compaction characteristics such as MDD (Maximum Dry Density) and OMC (Optimum Moisture Content).

However, no attempts have been made of recent to estimate any statistical model to evaluate the correlations between CBR value and its index properties. Using MLRA (Multiple Linear Regression) based Models with Liquid limit LL %, Plastic limit PL %, Group index GI, Plastic index PI %, Optimum moisture content OMC (%) and Maximum dry density MDD (kN/m^3) as input variables.

2.0 METHODOLOGY

Multiple Linear Regression Analysis (MLRA)

A MLRA provides an attempt to develop a correlation between more than two variables. One is the response (dependent variable) and others are explanatory (independent) variables. In this research work, CBR is the dependent variable and all other soils parameters are independent variables. Graph is plotted between CBR and other soil parameters and a suitable trend line is drawn through the plotted points for obtaining the value of coefficient of determination (R^2). The value of R^2 provides a measure of how well the future outcomes are likely to be predicted by the model (Rakaraddi, and Gomarsi, (2015). Generally, any correlation greater than 0.88 is usually considered as a best fit, CBR value will be the function of all other index properties. Mathematically:

CBR = f (%F, LL, PI, OMC, MDD)

The equation will be created as follows:

$$Y = b_0 + b_1x_1 + b_2x_2 + b_3x_3 + b_4x_4 + \dots + b_nx_n$$

Where $b_0, b_1, b_2, b_3, b_4, b_n$ are constants, Y is CBR and, x_1, x_2, x_3, x_4, x_n are soil properties considered for analysis. The values of these constants can be obtained by using Data Analysis Tool bar of Microsoft Excel and then putting these values with their corresponding soil properties in order to obtain a suitable equation (Rakaraddi, and Gomarsi, (2015).

Based on the impact parameter for the model, table 1 shows the developed theoretical models for the Regression.

Table 1. The derived theoretical model equation for the regression

| Model no. | Derivative equation |
|-----------|--|
| Model 1 | $\alpha + \beta_1(\text{gravel}) + \epsilon$ |
| Model 2 | $\alpha + \beta_1(\text{gravel}) + \beta_2(\text{sand}) + \epsilon$ |
| Model 3 | $\alpha + \beta_1(\text{gravel}) + \beta_2(\text{sand}) + \beta_3(\text{fine}) + \epsilon$ |
| Model 4 | $\alpha + \beta_1(\text{gravel}) + \beta_2(\text{sand}) + \beta_3(\text{fine}) + \beta_4(\text{ll}) + \beta_5(\text{pl}) + \epsilon$ |
| Model 5 | $\alpha + \beta_1(\text{gravel}) + \beta_2(\text{sand}) + \beta_3(\text{fine}) + \beta_4(\text{ll}) + \beta_5(\text{pl}) + \beta_6(\text{omc}) + \epsilon$ |
| Model 6 | $\alpha + \beta_1(\text{gravel}) + \beta_2(\text{sand}) + \beta_3(\text{fine}) + \beta_4(\text{ll}) + \beta_5(\text{pl}) + \beta_6(\text{omc}) + \beta_7(\text{mdd}) + \epsilon$ |

2.1 Experimental Program

The soil samples used for this research work were collected within the five Local Government of Ekiti North Senatorial districts in Ekiti state, Nigeria. The total of twenty (20) sample of soils were collected at the depth of 1.3m and laboratory tests of Liquid Limits (LL,) Plastic Limits (PL) , Plasticity Index

(PI),particle size distribution, Optimum Moisture Content (OMC), Maximum Dry Density (MDD) and soaked California Bearing Ratio (CBR) have been performed on these samples at Geotechnical Laboratory, Department of Civil Engineering, The Federal Polytechnic Ado-Ekiti, according to AASHTO and BS 1377 (1990) Specifications. The soil classifications of these soil samples have been done according to AASHTO method. The results are given in Table 1 along with % finer passing from #200 sieves for each sample.

3. RESULTS AND DISCUSSIONS

Table2 shows the summary of the classification of all the soil samples based on AASHTO soil Classification system. The soils are characterized as Clayey soils (A-4, A-6 and A-7-5) and Clayey gravelling soils (A-2-4, A-2-6,A-2-7).Hence, the soils are describing as clay of high compressibility respectively. [This results agree with Tunbosun et al ,2022 about the general classification of soil properties within the study area](#)

The result of grain size analysis performed on the soils samples show that many of the zones had a very high percentage finer than 0.075 fractions that is > 35% varied between 15 and 75 %. These results showed that there exist very fine materials within the study area.

Consistency Limit Test results for Liquid Limit (LL %), plastic limit (PL%) and plasticity index (PI %) for all the samples varied between 19.90 – 49.02 % for LL; 8.8 – 27.27 % for PL % and 8.63 - 23.57 % for PI %.

The result of Maximum Dry Density (MDD kg/m3), and the Optimum Moisture Content (OMC) performed on the samples ranges between 2035 – 2377 Kg/m³and 11.88 – 24.25 % respectively. According to (FMW, 1997) recommendation, the above analysis indicates that the soils samples from

all the zones fell above the minimum dry density recommended for subgrade materials. However, the soils are recommended for sub grade and fill material respectively since their MDD is within the minimum specification for sub grade and earth fill materials.

The results of the soaked California bearing ratio performed on all the samples ranges between 1.38 – 9.39

%.. According to (Samar *et. al.*, 2019) a high reduction in CBR values after

soaking indicates that the soil is very sensitive to changes in the moisture content.

Table 2. Laboratory test results for soil samples

| SAMPLE NO | % G | %S | %F | LL(%) | PL (%) | PI (%) | OMC (%) | MDD KG/M ³ | SK CBR(%) | AASHTO CLASS. |
|-----------|-----|----|----|-------|--------|--------|---------|-----------------------|-----------|---------------|
| 1 | 5 | 65 | 30 | 30.00 | 14.02 | 15.98 | 16.42 | 2227 | 2.88 | A-2-6 |
| 2 | 8 | 49 | 43 | 43.15 | 9.00 | 34.15 | 19.45 | 2173 | 2.63 | A-7-5 |
| 3 | 7 | 57 | 36 | 43.01 | 22.32 | 20.69 | 16.43 | 2267 | 1.38 | A-7-5 |
| 4 | 5 | 40 | 55 | 39.07 | 21.56 | 17.51 | 21.17 | 2234 | 1.75 | A-2-6 |
| 5 | 9 | 55 | 36 | 49.02 | 17.01 | 32.01 | 21.21 | 2242 | 4.15 | A-7-5 |
| 6 | 5 | 63 | 32 | 38.31 | 14.78 | 23.53 | 21.67 | 2197 | 1.89 | A-2-6 |
| 7 | 6 | 28 | 62 | 32.20 | 8.8 | 23.4 | 20.87 | 2113 | 2.63 | A-2-6 |
| 8 | 10 | 74 | 16 | 40.10 | 16.27 | 23.83 | 24.25 | 2093 | 2.51 | A-7-5 |
| 9 | 30 | 50 | 25 | 33.80 | 18.05 | 15.75 | 21.11 | 2215 | 3.63 | A-2-6 |
| 10 | 12 | 72 | 16 | 29.01 | 7.80 | 21.21 | 22.81 | 2207 | 4.13 | A-2-6 |
| 11 | 13 | 47 | 40 | 45.00 | 14.80 | 30.2 | 17.27 | 2236 | 2.83 | A-7-5 |
| 12 | 30 | 42 | 28 | 32.00 | 23.57 | 8.63 | 21.67 | 2266 | 2.13 | A-2-4 |
| 13 | 28 | 30 | 42 | 28.15 | 16.09 | 12.06 | 21.03 | 2054 | 3.40 | A-2-6 |
| 14 | 37 | 28 | 35 | 32.01 | 13.64 | 18 | 11.88 | 2377 | 9.39 | A-2-6 |
| 15 | 15 | 43 | 42 | 28.51 | 18.92 | 9.59 | 19.01 | 2123 | 3.51 | A-2-4 |
| 16 | 5 | 30 | 65 | 41.20 | 13.93 | 27.27 | 17.6 | 2035 | 3.51 | A-7-5 |
| 17 | 10 | 37 | 53 | 39.07 | 21.56 | 17.51 | 21.17 | 2234 | 1.75 | A-2-6 |
| 18 | 30 | 40 | 27 | 33.80 | 18.05 | 15.75 | 21.11 | 2215 | 3.63 | A-2-6 |
| 19 | 31 | 31 | 38 | 19.90 | NP | NP | 22.52 | 2060 | 3.26 | A-3 |
| 20 | 15 | 42 | 43 | 28.51 | 18.92 | 9.59 | 19.01 | 2123 | 3.51 | A-2-4 |

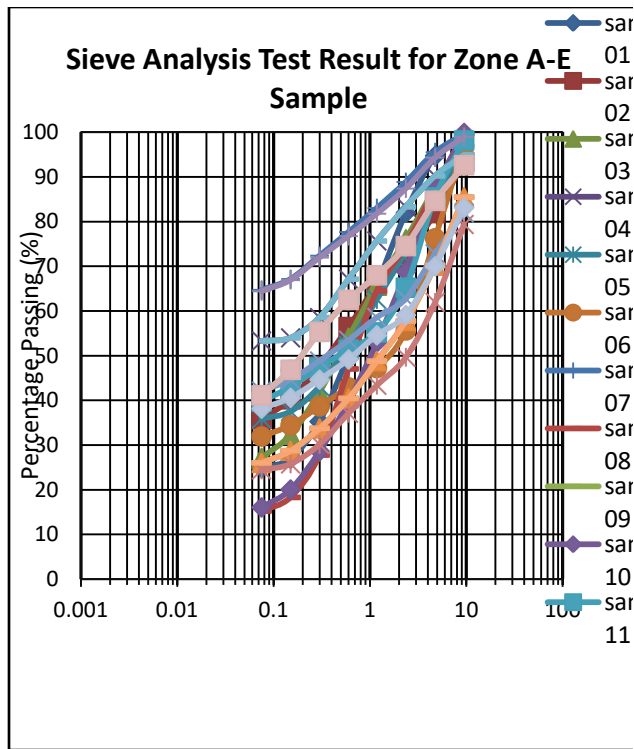


Fig.1. Graph of Sieve Analysis for the Samples

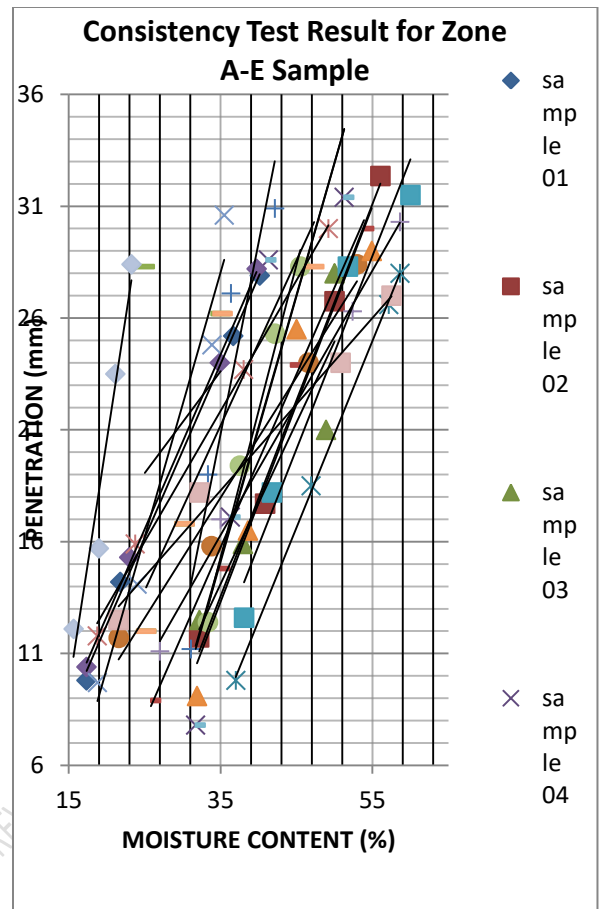


Fig.2 .Graph of Liquid Limits Test for the Samples

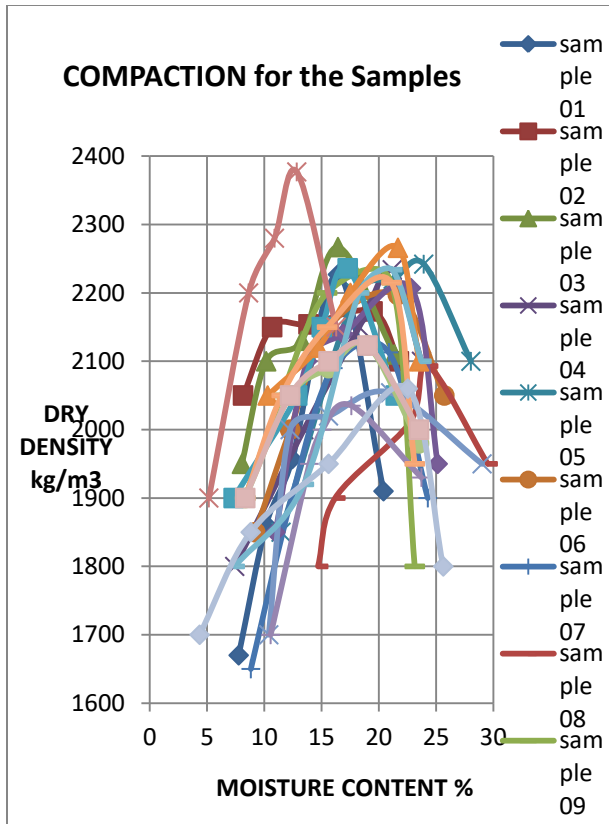


Fig.3 Graph of Compaction Test for the Samples

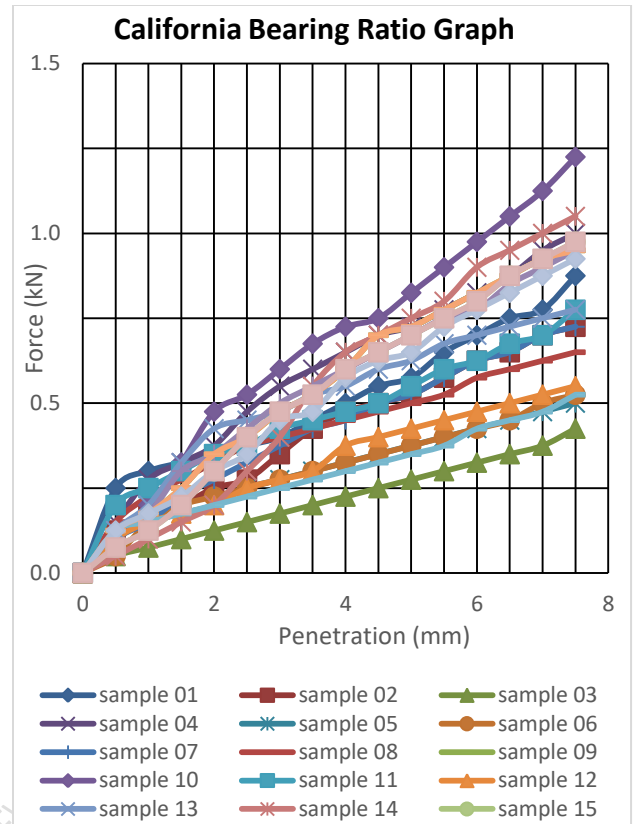


Fig.4 Graph of California Bearing Ratio for Samples

3.1 Correlation By Multiple Linear Regression Analysis

This analysis has been performed by taking CBR as function of more than one independent variables. The equation which have been obtained through MLRA by adopting Microsoft Excel solution are given in table 2. From the developed model for Soaked CBR, based on the values of coefficient of determination (R^2) and Adjusted Coefficient of Determination ($Adj.R^2$), it is concluded that model 6 has better correlation.

Table 3. Developed Correlations For Soaked Cbr Values

| MODEL NUMBER | MODEL CORRELATION | R ² |
|--------------|---|----------------|
| 1 | $CBR = 1.92 + 0.08(\text{gravel}) + \epsilon$ | 0.3048 |
| 2 | $CBR = 2.25 + 0.08(g) - 0.01(s) + \epsilon$ | 0.3069 |
| 3 | $CBR = 5.94 + 0.04(g) - 0.04(s) - 0.04(f) + \epsilon$ | 0.3081 |
| 4 | $CBR = 3.65 + 0.08(g) - 0.04(s) - 0.03(f) + 0.08(l) + \epsilon$ | 0.3081 |
| 5 | $CBR = 0.57 + 0.12(g) + (s) + 0.01(f) + 0.08(l) - 0.05(pl) + \epsilon$ | 0.4618 |
| | $CBR = 11.52 + 0.06(g) - 0.03(s) - 0.04(f) + 0.05(l) - 0.07(pl) - 0.30(omc) + \epsilon$ | 0.6761 |
| 7 | $CBR = 10.06 + 0.06(\text{gravel}) - 0.03(\text{sand}) - 0.04(\text{fine}) + 0.05(l) - 0.07(pl) - 0.29(omc) + (mdd) + \epsilon$ | 0.7032 |

Table 4: Validation of developed correlation for soaked CBR (Model 6 was adopted)

| S/N | Actual | Predicted | Residuals |
|-----|--------|-----------|-----------|
| 1 | 2.88 | 3.307938 | -0.42794 |
| 2 | 2.63 | 3.810046 | -1.18005 |
| 3 | 1.38 | 3.067347 | -1.68735 |
| 4 | 1.75 | 1.192242 | 0.557758 |

| | | | |
|----|------|----------|----------|
| 5 | 4.15 | 2.809691 | 1.340309 |
| 6 | 1.89 | 2.070182 | -0.18018 |
| 7 | 2.63 | 2.588893 | 0.041107 |
| 8 | 2.51 | 1.81605 | 0.69395 |
| 9 | 3.63 | 3.882851 | -0.25285 |
| 10 | 4.13 | 2.974634 | 1.155366 |
| 11 | 2.83 | 2.974634 | -1.52033 |
| 12 | 2.13 | 3.111617 | -0.98162 |
| 13 | 3.4 | 3.5708 | -0.1708 |
| 14 | 9.39 | 7.768478 | 1.621522 |
| 15 | 3.51 | 2.640821 | 0.869179 |
| 16 | 3.51 | 3.055488 | 0.454512 |
| 17 | 1.75 | 1.682204 | 0.067796 |
| 18 | 3.63 | 4.106227 | -0.47623 |
| 19 | 3.26 | 4.064017 | -0.80402 |
| 20 | 3.51 | 2.63015 | 0.87985 |

The actual values are the value of the experimented soaked CBR in the laboratory. The predicted value is generated by modeling; a residual is a measure of how well a line fits an individual data point. It is the values. The positive residual values indicate predicted values are too low, similarly the negative residual values indicate that the predicted values are too high.

difference between the actual and the predicted values. It was observed that the residual are both positive and negative

Test of normality of residual values using the histogram

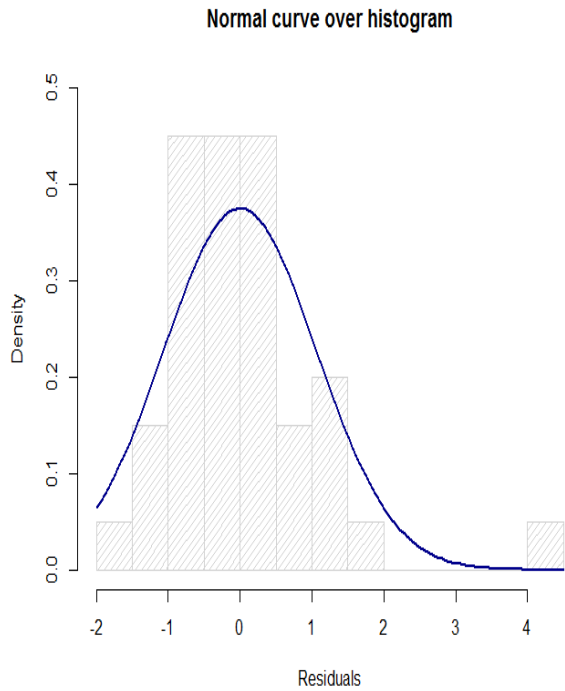


Fig. 5. Histogram showing normality of the residuals

The dome shape or the symmetrical nature of the histogram indicates validity of normality of the residuals values.

4.1 CONCLUSION

In the present study the soils elected for the study is largely belongs to clay family. Six multiple linear regression models are developed with seven soil physical property as independent variable and CBR as dependent variable. The correlation between the observed and the predicted values show that the relationship between observed and the predicted CBR is approximately 70 % strong. The analysis agree with Alade et al ,2019 findings which state that degree of relationship between experimented and predicted values is taken to be high when the R2 value is within 70 and 80 %. Jim Frost 2020 as sighted by Akinwamide et al 2022 opined that ,higher From the study it is established that a strong correlation exists between CBR and soil physical properties and the equations can be used for prediction of soaked CBR, where data availability is constrained by time and resources.

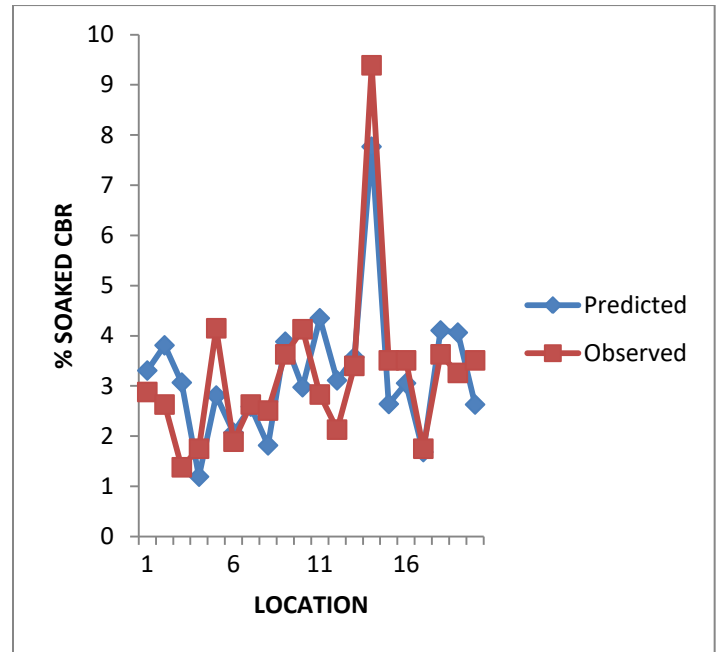


Fig.6.Graph of predicted against observed CBR

R2 values shows a good model results and accurate calibration.

The derived equation is thus written as; **Soaked CBR** =10.06 + 0.06(G) - 0.03(S) - 0.04(F) +0.05(LL) - 0.07(PI) - 0.29(OMC) + MDD + E

From the study it is established that a strong correlation exists between CBR and soil physical properties and the equations can be used for prediction of soaked CBR, where data availability is constrained by time and resources. The best model test was used to predict soaked CBR, the residual plotted over histogram curve is symmetrical in nature which indicates normality in residuals (error values).

4.2 Recommendations

3. availability of information for the use of geotechnical engineers working in the locality.
4. Prediction can be of great help in the field of Civil Engineering, if individuals are encourage to work more in this field of study.

1. Provision of adequate data for use within the study area
2. The predicted model is there by recommended for use by future developer m Consultant and contractors who may be working within this study area

UNDER PEER REVIEW

REFERENCES

- 1 AASHTO. 2000. Standard Specification for Transportation Materials and Methods of Sampling and Testing, 20th Edition. American Association of State Highway and Transportation Officials: Washington, D.C.
- 2 Akinwanide J .T/Jacob O.E /Osuji. S.O and Ebuka Nwankwo ‘Modelling of Soaked and Unsoaked California Bearing Ratio’ Asian Soil Research Journal Pp 32-46 (2022)
- 3 Akinwanide J .T/Jacob O.E /Osuji. S.O , Ngozi Kayode Ojo and Ebuka Nwankwo ‘Estimation of some geotechnical indices of soils using machine Learning Techniques’ Civil and Environmental Research Pp 22-35 (2022)
- 4 Faisal Iqbal, Aneel Kumar, Ali Murtaza. (2018) Co-Relationship between California Bearing Ratio and Index Properties of Jamshoro Soil. Mehran University Research Journal of Engineering and Technology, Mehran University of Engineering and Technology, Jamshoro, Pakistan,37(1),pp.177
190<http://publications.muet.edu.pk/index.php/muetrj/article/view/121/62>>. <hal-01676724>
- 5 Gunaydin, O., Gokoglu, A., Fener, M., 2010,“Prediction of artificial soil’s unconfined compression strength test using statistical analyses and artificial neural networks”, Advances in Engineering Software, vol. 41, pp. 1115–1123,
- 6 Jim Frost (2020), Regression Analysis : An Intuitive Guide for using and interpreting Linear model
- 7 Samar A. Taham Shewrif El Badawy and Gabr .A (2019) Regression and Neural Networks Models for California Bearing Ratio Prediction of Typical Granular Mterials in Egypt.Springer.
- 8 Scheffe, H., (1958), Experiments with Mixtures, Royal Statistical Society journal. Ser B., Vol. 20, 1958. pp 344
- 9 Taşkıran, T. (2010) “Prediction of California bearing ratio(CBR) of fine grained soils by AI methods,” *Advances in Engineering Software*, Vol.41,pp.886-892.
- 10 Yıldırım, B. and Gunaydın, O. (2011) “Estimation of California bearing ratio by using soft computing