

### Significant Lower Carboxyl Esterase Specific Activity in **Meningiomas** and **Gliomas** and Derived Primary Cell Culture Indicate reduction in Anticancer Drug metabolism

#### ABSTRACT

**Aims:** Carboxylesterases (CE) converts carboxylic esters to alcohols and carboxylic acids. CE is a protective factor in the brain cells categorized as phase-I drug-metabolizing enzymes. Therefore we aim to find out the difference CE specific activity for Brain tumors as compared to the normal brain to understand the drug metabolism efficiency.

**Study Design:** Total Protein and Carboxylesterases assays performed for Meningiomas and gliomas and in their derived primary cell culture.

**Place and Duration of Study:** Sample: Department of Neurosurgery (Neurocentre) and Department of Neuropathology, Experiments performed: Departments of Neurochemistry and Neurovirology, NIMHANS, Bangalore, between January 2001 and October 2005.

**Methodology:** CE spectrophotometric assays were studied for 30 meningiomas and 52 gliomas in 82 males, while 45 meningiomas and 29 gliomas in 74 females respectively and derived cell culture. The brain tumor protein band pattern was studied by electrophoresis.

#### Results:

The brain tissue extracts for SDS PAGE displayed a high intense single protein (not purified) band of 60 kDa in brain tumors as compared to normal brain.

The similar CE-specific activity between the meningiomas  $20.96 \pm 5.071$  (n=50) and gliomas  $20.77 \pm 4.4644$  nmol/min/mg (n=61) respectively, exhibited significantly lower CE activity as compared to normal Brain (n=106)  $52.355 \pm 11.15$  nmol/min/mg of protein and p-value was less than 0.0001 extremely statistically significant. Hence CE activities significantly lower in all grades of parent Brain tumors as compared to normal brain. Primary cell cultures with respective passages expressed lower CE activities than parent tumors respectively.

#### Conclusions:

The current results indicate the reason for the failure of anticancer drug metabolism efficiency for both meningiomas and gliomas due to one of the reasons for exhibiting lower CE-specific activity. The chance of solving the drug metabolism provided by the current study helps advanced molecular biochemistry in designing drug conjugates for efficient metabolism by CE-specific activity and monitoring the chemotherapy for anticancer drug therapeutics in future.

*Keywords: Carboxylesterase, Specific Activity, Meningiomas, Gliomas, Drug metabolism*

---

## 1. Introduction

Carboxylesterases (CE) are hydrolases that belong to Class III Enzyme classification (EC 3.1.1.1) and specifically belong to the serine hydrolase family [1] and members of the esterase class of proteins [2]. These enzymes catalyze the conversion of carboxylic esters to the corresponding alcohols and carboxylic acids. CE was also capable of hydrolyzing aryl ester compounds and is categorized as phase-I drug-metabolizing enzymes [3].

CE is widely distributed and has been purified from membrane-rich fractions of mammalian cells and tissues. The mammalian CE is localized in the endoplasmic reticulum and cytosol of lysosomal fractions while the highest levels are present in microsomes of the liver respectively. A high abundance of CE in the liver is linked to certain cellular structural functions, particularly in directing protein targeting [4].

Human carboxylesterase1 (hCE1) exhibits low specificity and the ability to act on numerous structurally distinct substrates. hCE1 is primarily expressed in the liver and tends to hydrolyze small more compact molecules, such as oseltamivir. CE1 is found only in the liver, whereas CE2 is found in the intestine, and CE3 is found in brain cells [5].

Multiple forms of CE in human tissues are identified and four different types of CE have been recognized in human brain extracts [6]. In the central nervous system, the CE component of a blood-brain barrier system may function as a protective factor against foreign chemicals in their glial cells, neuronal cells, capillary endothelial cells and the antibody to may serve as a marker for invading macrophages from the systemic circulation [7-9].

Carboxylesterase activity can be influenced by interactions of a variety of compounds either directly or at the level of enzyme regulation. For eg. As drug elimination decreases and the incidence of drug-drug interactions increases when two or more drugs compete for hydrolysis by the same carboxylesterase isozyme [10]. Tissue-specific expression of CE activity determined the location and intensity of certain drugs [11]. Since a significant number of drugs are metabolized by CE for any alteration in the activity of this enzyme has an important role in clinical implications.

Pharmacologists explore the relevance of CES to human diseases or assign the contribution of certain CES in xenobiotic metabolism were reported. It will also facilitate medicinal chemistry efforts to design prodrugs activated by a given CES isoform or to develop potent and selective modulators of CES for potential biomedical applications [12].

For example, carboxylesterases rapidly convert the anticancer drug irinotecan to 7-ethyl-10-hydroxycamptothecin, a potent inhibitor of topoisomerase I [13]. Irinotecan has shown activity against colorectal, esophageal, gastric, non-small-cell, and small-cell lung cancers, leukemia, lymphomas, and even central nervous system malignant gliomas [14]. Glioma cells are also capable of converting CPT-11 to SN-38 by intrinsic tumor carboxylesterases [15]. The intratumorally administered CPT-11

can be effectively converted to SN-38 of drug delivery is effective by extending the survival time of animals bearing malignant gliomas.[16]

Neuroblastoma-bearing mice that received repeat treatment with intravenous hCE1m6-neural stem cells (NSCs) and irinotecan showed significantly lower tumor burden (1.4-fold,  $p = 0.0093$ ) and increased long-term survival compared with mice treated only with drug alone. These studies support the continued development of NSCs mediated gene therapy for improved clinical outcomes in neuroblastoma patients [17].

Therefore these findings support the importance of cytochemical and CE drug metabolism investigations in brain tumor research. However, CE-specific activity is not being addressed in all types of benign and malignant brain tumors which is significant to understand the role of CE in drug metabolism for efficient therapeutics. Given this, the present study was undertaken to quantify CE further in different WHO-grade brain tumors for both benign and malignant nature by comparing with normal autopsy human brain [18] to determine the specific activity of CE. The efforts for solving the tumor problem is provided by the current study promotes applications in the future by determining tumor CE-specific activity for drug metabolism efficiency.

## **2. Materials and Methods:**

**2.1 Autopsy brain and Brain tumor specimen:** The autopsy fresh normal brain tissue samples procured from the Department of Neuropathology, NIMHANS, (National brain tissue repository) are available for research purposes. A total of 27 fresh brain tissue samples are collected from this repository research studies after obtaining institutional ethics committee approval.

The Brain tumors biopsy samples were collected immediately after the surgery. HOD Neurosurgery, Neuro center NIMHANS permitted for procuring brain tumor samples. A total of 228 Brain tumors meningiomas and gliomas samples were collected. (Supplementary Table1). Brain tumor diagnosis results are provided from the Dept. of Neuropathology, NIMHANS (Table 1) Bangalore.

**2.2 Brain tissue processing:** The brain tumor samples collected, cleared of blood clots, if any, and rinsed with normal saline and net weight of the tissue noted (Dept of Neurochemistry, NIMHANS). Subsequently, the tissue specimens subjected to homogenization in tissue extraction Tris-buffered saline buffer (TBS containing 1% (v/v) Triton-X 100) with 0.5mM PMSF using a glass homogenizer. The tissue to buffer ratio was maintained at 1:31 w/v (ice) for homogenization. Homogenates centrifuged (16,000 rpm/30 minutes) at 4°C (Sorvall centrifuges, Bangalore, Karnataka, Bangalore). The supernatants were collected for biochemical analysis and stored at 4°C until the enzyme activity was assessed.

**2.3 Protein Estimation** was carried out according to Lowry's [19, 20] method using Bovine serum Albumin solution (BSA) as a standard.

**2.4 Carboxylesterase:** Gomori's method [21] and later modified by Van Asperen

[22]. Enzyme reaction initiated by adding 900µl of 5mM α-naphthyl acetate in Phosphate assay buffer (pH 7.0) to pre-incubated 100µl tissue extract and again incubated for 15 minutes at 27°C. Subsequently, the reaction stopped by the addition of 500µl DBLS reagent and enzyme activity measured by the wavelength at 600 nm of Spectrophotometer (Shimadzu, Bangalore, Karnataka, India)

## **2.5 Brain tumor Cell Culture**

### **2.5.1 Primary explants cell culture [23] (Patient-derived explants)**

The brain tumors were collected from patients subjected to explants culture. The tissue suspension was transferred to Petri dishes supplemented with an additional volume of MEM containing FCS (Sigma, USA). Petri dishes were transferred to a CO<sub>2</sub> incubator (Thermo scientific, Bangalore, India, Karnataka) set at 37°C. Media changed frequently after every 3 days during maintenance of cell culture (Dept of Neuro virology, NIMHANS).

### **2.5.2 Subculture**

The cells were rinsed with TVG and detached from the substratum of the petri dish containing MEM with 10 % (v/v) FCS. The detached half the portion of cell suspension was transferred to new Petri dishes for further growth and placed in a CO<sub>2</sub> incubator.

The remaining portion of the cell suspension was processed for biochemical studies.

### **2.5.3 Extraction of enzymes from the primary cell culture (Monolayer cells)**

The cells were washed with phosphate-buffered saline (1X PBS) pH=7.4 and kept in 1X PBS for 1-2 minutes. The cells were detached and homogenized with tris buffered saline (TBS- 50 mM Tris HCl and 145 mM NaCl, pH 7.4) containing 1% Triton X 100 (1:31w/v) and 0.5mM PMSF in ethanol. Cells with TBS centrifuged at 10,000 rpm for 30 minutes at 4°C. The collected supernatant was subjected to biochemical studies for Protein and enzyme assays in respective subsequent passages of primary cell culture and followed as per the earlier procedures as carried out with parent brain tumors.

## **2.6 Electrophoresis:[24]**

**2.6.1 SDS PAGE:** The brain tissue supernatant and primary cell culture samples containing 20 µg protein electrophoresed in SDS polyacrylamide gel (10%) at a constant voltage of 50 Volts for 10 minutes, followed by 150 Volts for 1 hour. The power stopped when the marker dye reached 1-2 mm above the lower edge of the plate. The gel was carefully transferred to the staining solution with Coomassie Brilliant Blue R-250 at room temperature for 1 hour and de-stained with glacial acetic acid till the background become clear.

**2.6.2 Native PAGE Electrophoresis** (Biorad, Bangalore, Karnataka, India)—Native protein gel was also performed for protein expression without SDS for Brain tumor samples as compared to normal brain.

## 2.7 Statistical analysis:

The mean and standard deviation were calculated for carboxylesterase concerning different grades and types of brain tumors by comparing with normal brain using the 't-test calculator entering the data of group one and two' (Quick Calcs, Graphpad Software). The  $p$ -value was calculated for brain tumor carboxylesterases by comparing with a mean value of normal human brain.

## 3. Results:

The salient socio-demographic features and epidemiological characteristics for patients' brain tumor samples are mentioned in Supplementary (155nos. Table 1). A total of 74 meningiomas and 81 glioma tissues subjected for carboxylesterase assay. Amongst them, more meningioma cases were encountered in females (n=44) as compared to males (n=30). This difference obtained much more prominent in cases of fibrous meningioma (Male: Female =5:14) and transitional meningioma (Male: Female = 3:10). On the contrary in cases of gliomas males were found to be more in numbers (n=52) as compared to females (n=29). These differences were much more prominent particularly in cases of Anaplastic astrocytoma (Male: Female = 14:6) and Anaplastic Oligodendroglioma (Male: Female = 10:3).

The results of Hydrolytic enzyme CE activities in brain tumors are mentioned in Table 1 (Figure 3 to Figure 6 and Supplementary Table 2A, 2B, 3A, and 3B). The specific activity of an enzyme is defined as the enzyme total activity to total protein and expressed in terms of nanomoles of product formed per minute per milligram of protein.

### 3.1 Total protein content in brain tumor tissue samples

The protein was estimated for all types of brain tumors compared with the normal human brain. The more protein content reported for brain tumors when compared to the gray and white matter of normal human brains respectively measured as mg/g of wet tissue. Meningiomas showed an average of 40-50 mg protein and gliomas exhibited 50-60 mg/g of wet tissue respectively.

#### 3.1.2 Protein Expression in SDS PAGE Electrophoresis

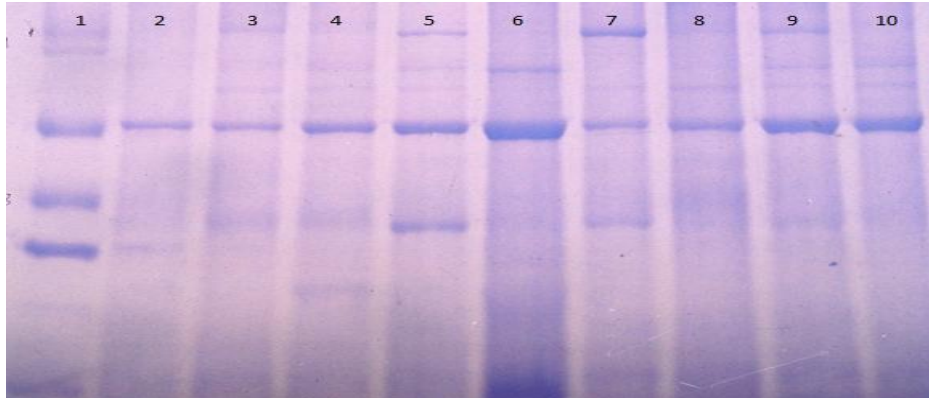
##### 3.1.2.1 SDS PAGE Protein expression in Meningiomas and gliomas

The SDS-PAGE gel electrophoresis displayed protein band patterns in both normal human brain and brain tumors tissue supernatant samples. The brain tissue extracts displayed prominent bands in the sixth lane of Anaplastic oligodendroglioma and other lanes (Fig,1 set I 5<sup>th</sup>, 7<sup>th</sup>, 8, and 9<sup>th</sup>Lanes) and one band in case of Neuroendocrine carcinoma olfactory neuroblastoma as compared to the normal brain).

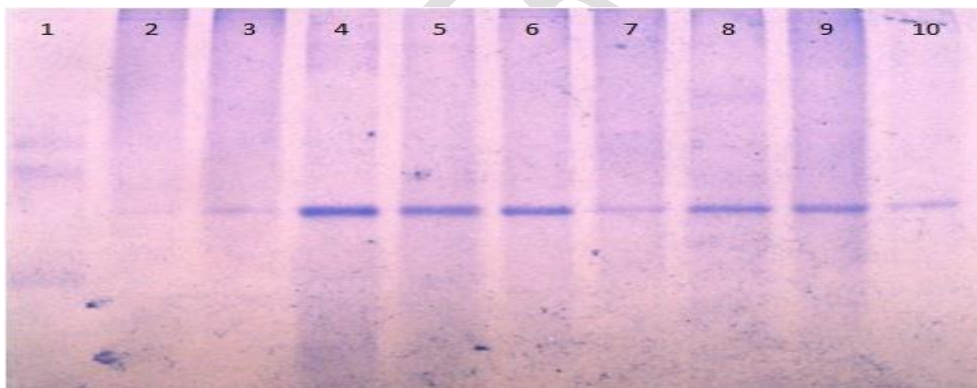
The tissue extracts of grey matter in the normal human brain displayed an intense band ~60 kDa protein than white matter (Fig 1Set II). The same protein (~60kDa) expressed more in the case of almost all brain tumors in gel, whereas more intense protein bands were expressed for five samples (Fig.1 Set II A lane 4, 5, 6, 8, and 9) glioblastoma multiforme left frontal, Malignant astrocytoma G-IV

left front temporal region, Meningothelial meningioma parasagittal posterior frontal, Transitional meningioma G-I left tempo parietal, Anaplastic meningioma, as compared to normal brain protein.

**Figures**



Set I Lanes: 1).Marker 2).Hippocampus 38/M 3).Frontal (white) 15/M 4).Frontal (gray) 40/M 5). Anaplastic oligodendroglioma (L) Temporal 50/F 6). Anaplastic oligodendroglioma (L) temporal 50/F 7). Anaplastic oligodendroglioma 53/M 8). Anaplastic oligodendroglioma 32/M 9). Anaplastic oligodendroglioma 45/M 10). Neuroendocrine carcinoma olfactory neuroblastoma 40/M



**Set II.** Lanes 1) Marker, 2) Frontal (white) 50/M, 3) Frontal (gray) 50/M, 4) Glioblastoma multiforme left frontal 50/M, 5) Malignant astrocytoma G-IV left front temporal region, 6) Meningothelial meningioma parasagittal posterior frontal attached to area 61/M, 7) A Typical meningioma frontal 40/F, 8) Transitional meningioma G-I left tempo parietal, 9) Anaplastic meningioma 45/M, 10) A Typical meningioma G-I left tempo parietal 20/M. (M –Male patient,F- Female patient)

1 2 3 4 5 6 7 8 9 10



**Set III.** Lanes: 1) A Typical meningioma G-II tempo parietal 50/M parent tumor, 2) Passage-1, 3) Passage-2, 4) Passage-3, 5) Passage-4, 6) Transitional meningioma G-I left tempo parietal 20/M parent tumor, 7) Passage-1, 8) Passage-2, 9) Passage-3, 10) Passage-4.

**Fig 1 SDS PAGE Electrophoresis Protein Expression for benign and malignant Brain tumors and Meningioma primary cell lines**

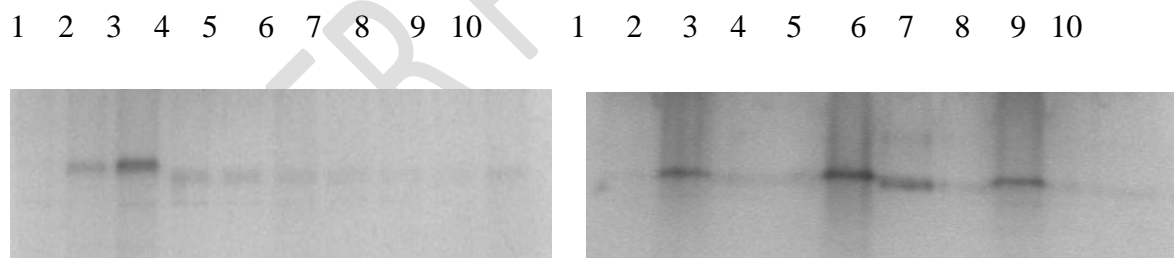
**3.1.2.2 SDS PAGE Protein expression in Meningioma derived primary cell lines**

Meningioma parent tumors of both Grades-I of Transitional meningioma G-I left tempo parietal 20/M and A Typical meningioma G-II tempo parietal 50/M parent tumor expressed thick intense protein band as compared to their respective four subsequent subculture passages which expressed lower protein content (Fig.1 Set III).

**3.1.3 Protein Expression in Native PAGE Electrophoresis in Meningioma derived primary cell lines**

Set I gel displayed an intense protein band for the brain hippocampus as compared to frontal white matter and the same protein band expressed more in the parent tumors of fibrous meningioma G-I MCF base, however, the band intensity decreased gradually in their subsequent passages (Fig.2 set I).

Set II gel displayed an intense protein band in parent tumors of meningothelial meningioma WHO G-I right front parietal and transitional meningioma G-I left tempo parietal but not in their passages-1 and 2. Whereas meningioma G-I right C.P angle and their passage-1 also displayed an intense protein band but not for passage-2 (Fig.2 Set II).



**Set I**

**Set II**

**Set I Lanes--** 1.Frontal (white) 26/F; 2. Hippocampus 42 /F; 3. Fibrous meningioma G-I MCF base 30/F; 4.Passage-1; 5. Passage-2; 6. Passage-3; 7. Passage-4; 8. Passage-5; 9. Passage-6; 10. Passage-7

**Set II Lanes--** 1.Thalamus; 2. Meningothelial meningioma WHO G-I right front parietal; 3.Passage-1; 4.Passage-2; 5.Meningioma G-I right C.P angle; 6.Passage-1; 7.Passage-2; 8. Transitional meningioma G-I left tempo parietal 20/M; 9.Passage-1; 10.Passage-2.

**Fig 2 Native PAGE Electrophoresis Protein Expression in benign meningiomas and Meningioma primary cell lines**

**3.2 The specific activity of Carboxylesterase (CE) in Brain tumor samples**

**Carboxylesterase** specific activity determined for Brain tumors by comparing with

Autopsy normal human brain. The normal brain is an average value of CE-specific activity expressed in nmol/min/mg protein for a white and gray matter of frontal, parietal, occipital, temporal, and tissues of the thalamus, cerebellum, and hippocampus.

Meningiomas (n=50) exhibited significantly lower CE activity  $20.96 \pm 5.071$  and gliomas (n=61) showed  $20.77 \pm 4.4644$  nmol/min/mg of protein respectively as compared to normal brain (n=106)  $52.355 \pm 11.15$  nmol/min/mg of protein (Table 1). The two-tailed *p*-value was less than 0.0001 for all meningiomas and gliomas studied. By conventional criteria, this difference is considered to be extremely statistically significant.

**Table 1** Average CE specific activities of normal brain, Meningiomas and gliomas

Sl No.	Brain Samples	CE Specific Activity (Std. deviation)	Std err or	<i>p</i> -value
1	Normal brain (n) Mean $\pm$ SD	106 $52.355 \pm 11.15$		
2	Meningiomas (n) Mean $\pm$ SD	50 $20.96 \pm 5.071$	1.654	0.0001
3	Gliomas (n) Mean $\pm$ SD	61 $20.77 \pm 4.46$	1.493	0.0001

SA=Specific activity nmol/min/mg of protein. CE=Carboxyl esterase

### 3.5.1 The specific activity of Carboxylesterase in different grades of meningiomas

The comparative average specific activities of CE are estimated in the different grades of meningiomas presented in Fig 3A (suppl. Table 2A).

Among various types of meningiomas studied, atypical meningiomas G-II exhibited the highest CE specific activity ( $25.3474 \pm 7.7647$  nmol/min./mg of protein) nevertheless this was significantly lower than a normal brain. The lowest levels of CE were noted in angiomatous meningioma G-I ( $11.79 \pm 3.018$  nmol/min./mg of protein). Further, there were no significant differences in the specific activity for CE among the various grades of meningiomas.

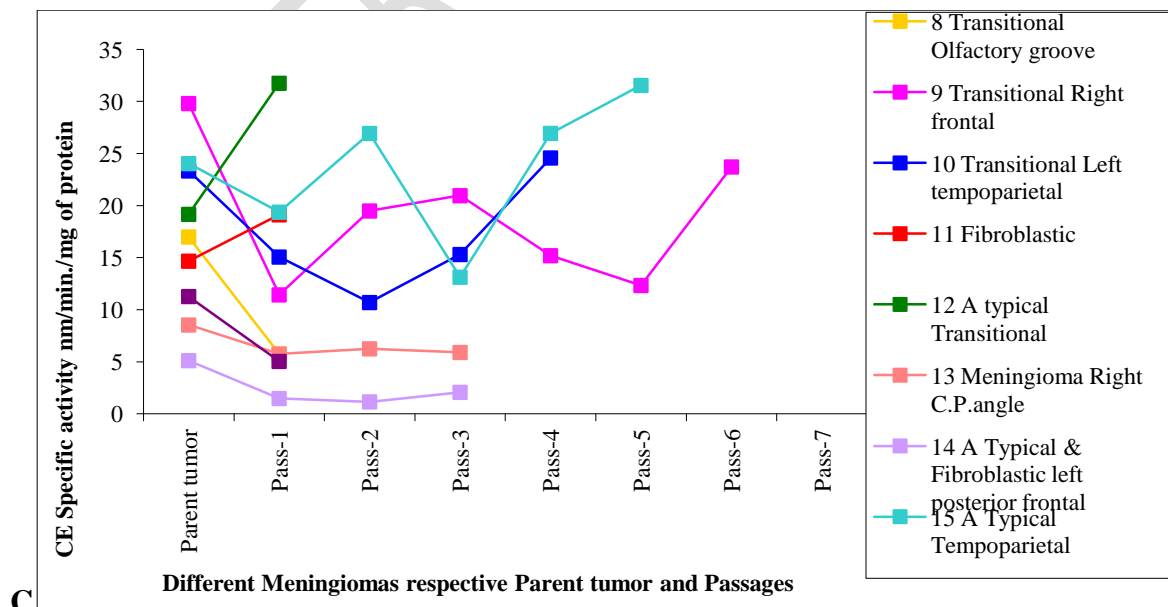
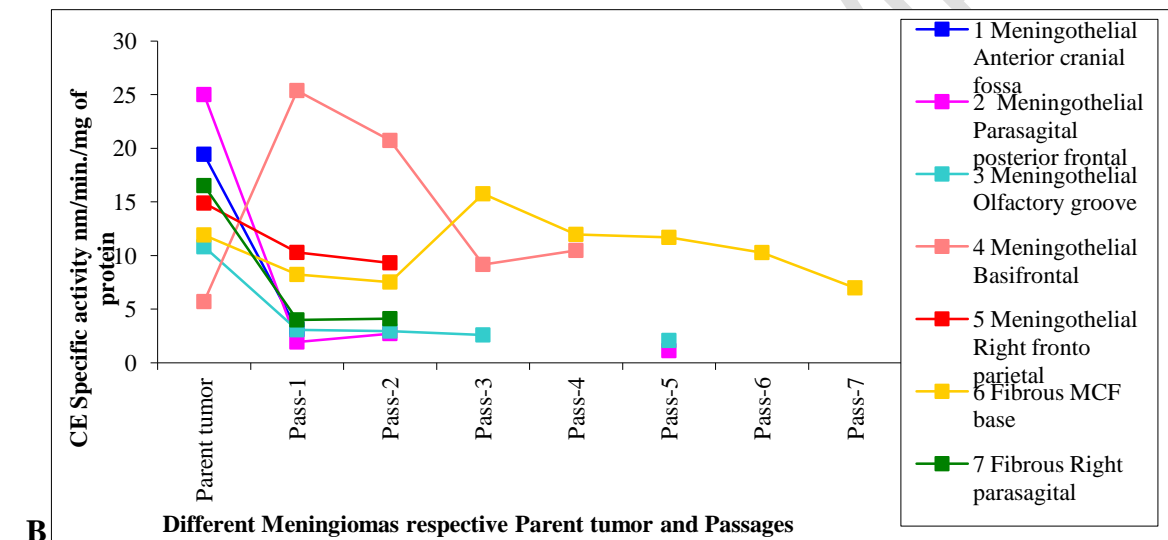
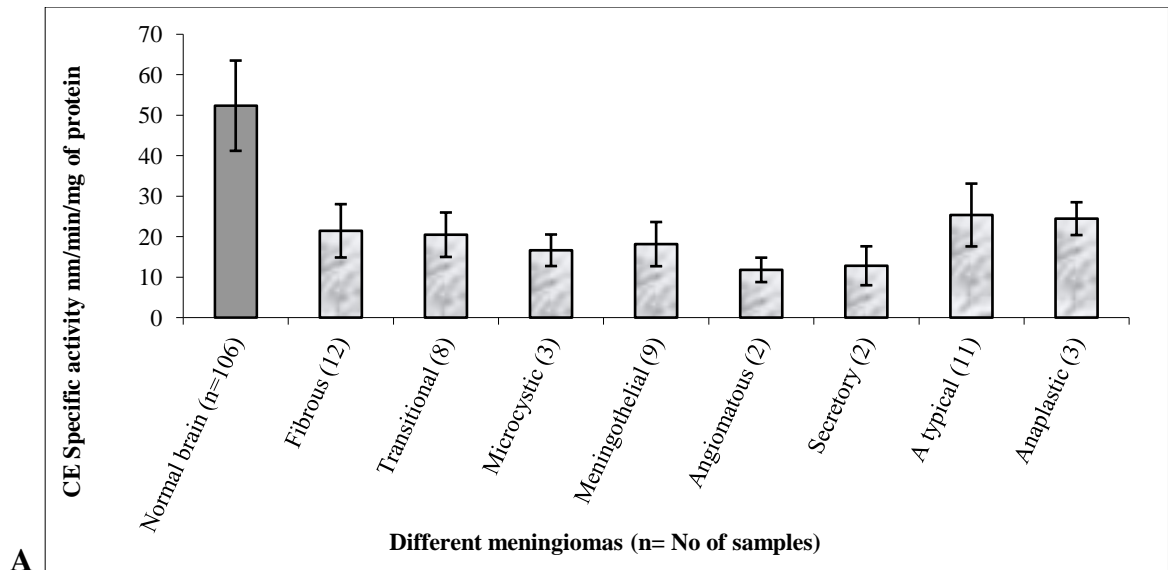


Fig 3 Specific activity of Carboxyl esterase in different grades of **A Parent Meningiomas** B and C Derived primary cell culture

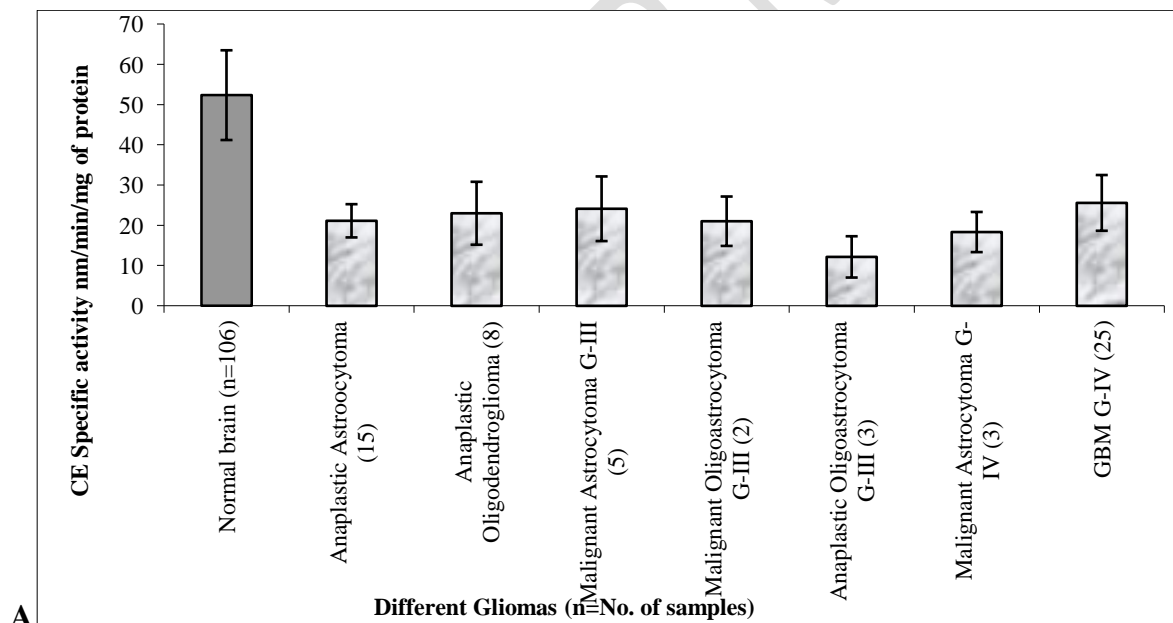
### 3.5.2 The specific activity of Carboxylesterase for meningiomas derived primary cell lines

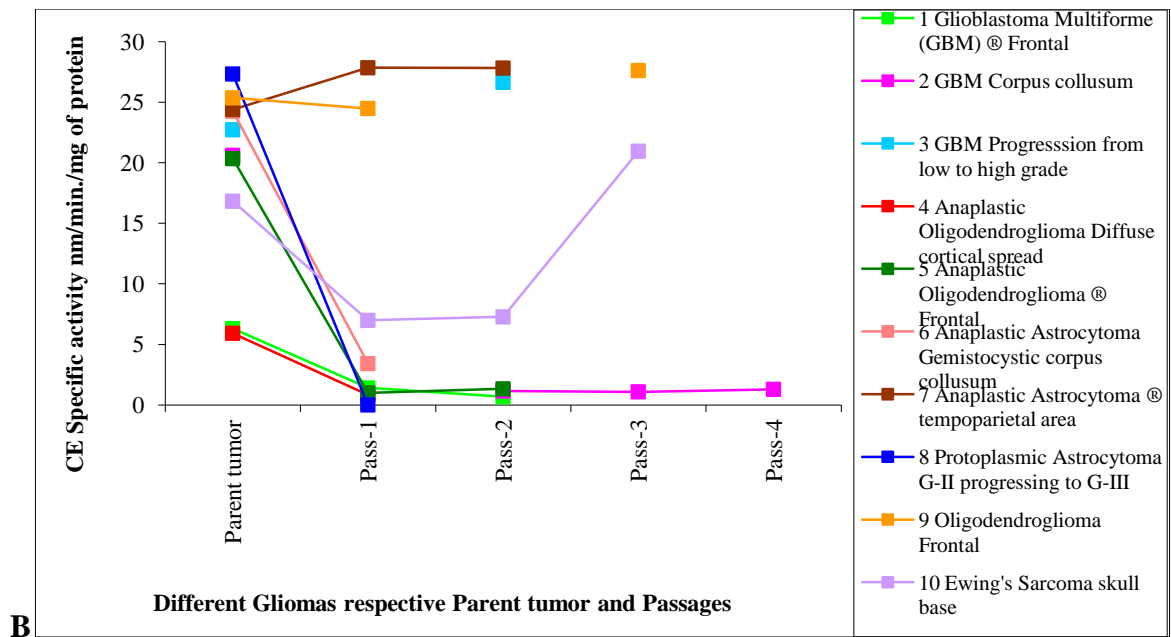
CE activity of cell lines varies among the passage they have undergone, but the higher specific activity exhibited in parent tumor than their cell lines however higher activity in passages of few cell lines was significantly lower than the normal brain (Fig 3B and C).

Some of the meningioma cell lines expressed lower enzyme activity concerning parent tumor, except for meningothelial base frontal (Fig 3B), atypical transitional and fibroblastic meningiomas (Fig 3C), which expressed higher activity in passage-1, later the CE-specific activity decreased for the next passages and varies for other passages. While Transitional meningioma G-I (L) Tempo parietal (passage-4,5), Transitional meningioma G-I @ frontal (passage-6), A Typical meningioma G-II tempo parietal (passage-4,5) expressed higher CE specific activities as compared to their parent tumor.

### 3.5.3 The specific activity of Carboxylesterase in different grades of gliomas

Among various types of gliomas studied, glioblastoma multiforme G-IV and Malignant Astrocytoma G-III exhibited the highest CE activity  $25.585 \pm 6.92$  and  $24.1268 \pm 8.0313$  respectively and lowest in anaplastic oligoastrocytoma G-III  $12.166 \pm 5.1304$  nmol/min./mg of protein (Fig 4A, suppl. Table 2B) which were significantly lower as compared to the normal human brain.





**Fig 4 Specific activity of Carboxyl esterase in different grades of A Parent Gliomas B Derived primary cell culture**

### 3.5.4 The specific activity of Carboxylesterase in gliomas primary cell lines:

All glioma parent tumors and their derived primary cell lines expressed significantly lower CE activity as compared to normal brain. However higher CE activity was expressed in passage-1 for anaplastic astrocytoma right tempo-parietal area (Fig 4B) as compared to parent tumor but expressed lower CE activity than a normal brain. Anaplastic Astrocytoma G-III R Tempo parietal area (passage-2) and Ewing's sarcoma – skull base Metastasis (passage-3) expressed quite higher CE activities.

## 4. Discussion:

The Carboxyl esterase specific activity determined in all WHO grades brain tumors (meningiomas and gliomas) and in their derived primary cell culture.

### 4.1 Total protein of Brain tumors

The protein content for Meningiomas exhibited an average of 40-50 mg and gliomas obtained 50-60 mg/g for wet tissue respectively due to higher proliferation of malignant cells than normal brain cells.

The SDS PAGE gel displayed a single intense protein band molecular weight of ~60, 000 Da. The single dark intense protein band expressed more in Brain tumor samples as compared to the normal brain which displayed like a purified protein band. However, SDS PAGE single band obtained for brain tissue extracts homogenized and centrifuged supernatant samples which are properly standardized. Hence this crude brain tumor extract novel single band displayed for one protein ~60,000Da. The brain tissue extracts displayed prominent bands in the sixth lane of Anaplastic oligodendroglioma and other brain tumors (Fig,1 set I for 5<sup>th</sup>, 7<sup>th</sup>, 8, and 9<sup>th</sup> Lanes) due to highly

proliferated cells correlates to meningiomas G-I expressed in Set II. The tumors like GBM left frontal, Malignant astrocytoma G-IV left front temporal, Meningothelial meningioma parasagittal posterior frontal, Transitional meningioma G-I left tempo parietal, Anaplastic meningioma displayed single intense band as compared to normal brain (Fig 1 and set II). While A Typical meningiomas (Fig 1 and Set II of 7<sup>th</sup> and 10<sup>th</sup> lanes) expressed a less intense single protein band.

SDS PAGE gel displayed single intense protein band 60KDa in Brain tumor samples similar to earlier reports on Gel chromatography on SephadexG-200 of concentrated samples of brain extract gave two completely separated fractions exhibiting CE specific activity. One with a molecular weight of about 60.000Da contained the bulk of acetyl ester-splitting enzymes [5].

Native PAGE protein expression results are similar to the SDS PAGE band pattern. Set I gel displayed a single intense protein band for fibrous meningioma G-I MCF base and band intensity decreased gradually in their subsequent passages may be due to the viability of cells in primary cell culture (Fig.2 set I).

Set II gel displayed an intense protein band for meningothelial meningioma WHO G-I right front parietal and transitional meningioma G-I left tempo parietal except in their passages-1 and 2. Whereas meningioma G-I right C.P angle and their passage-1 also displayed intense protein band except for cell culture passage-2 due to reduction in cell growth.

#### **4.2 Importance of CE for anticancer drug metabolism**

It is known that Carboxylesterase is a ubiquitous enzyme responsible for the hydrolysis of numerous clinically useful anticancer drugs. Since ester moieties are frequently included in molecules to improve their water solubility and bioavailability, *de facto* they become substrates for CEs [25].

Carboxylesterase-based metabolism is used for the activation of ester prodrugs. For example, irinotecan is rapidly converted by CE to 7-ethyl-10-hydroxycamptothecin, a potent inhibitor of topoisomerase I. Irinotecan is widely used as an anticancer drug for a wide range of malignancies. Whereas some of the patients respond to it poorly, presumably due to lower levels or polymorphic variants of Carboxylesterase [26].

Since tumors showed reduced activity of Carboxylesterase in our study, which turns out lower effect on drug metabolism. In support of our data, previous studies have also shown that decreased intracellular CE activity in human ovarian cancer cells caused decreased intracellular conversion of KW -2189 to its active form. The decreased conversion of CPT-11 to SN-38 in HAC2/0.1 cells might be explained by lower CE activity [27]. Because of less intrinsic tumor CE activity, CPT-11 cannot be degraded to SN-38 is an active metabolite (7-ethyl -10-hydroxy camptothecin) toxic to cancer cells.

#### **4.3 Anticancer drug metabolism by CE in Brain tumors**

Recent clinical trials have shown major antitumor activity in recurrent glioblastoma when adding the antiangiogenesis drug bevacizumab with CPT-11. The combination of targeted agents to

topoisomerase I inhibitors represent a novel and promising approach for new treatment strategies for primary malignant brain tumors [28].

CPT-11 (irinotecan) has been investigated as a treatment for malignant brain tumors. However, limitations of CPT-11 therapy include low levels of the drug entering brain tumor sites and systemic toxicities associated with higher doses.

These studies demonstrate the feasibility of NSC-mediated delivery of CE to glioma and lay the foundation for translational studies of this therapeutic paradigm to improve clinical outcome and quality of life in patients with malignant brain tumors [29]

The survival of tumor-bearing animals was significantly prolonged by the treatment with F3.CE and CPT-11. This strategy could be considered as an effective treatment regimen for lung cancer brain metastases. [30]. Hence currently by knowing CE-specific activity helps in designing the drugs with conjugates to target efficient anticancer drug metabolism.

#### **4.4 Specific Activity of CE in Parent Brain tumors Meningiomas and gliomas**

Total activity of CE performed with alpha naphthyl acetate and time curve expressed as nanomoles per minute. While specific activity will be in terms of nanomoles per minute per milligram of protein. Thus the novel studies for CE-specific activity for all types of brain tumors (Suppl. Table 2A, 2B) and their derived primary cell culture (suppl. Table 3A and 3B) considered in current research [31, 32] for chemotherapeutic applications.

Indeed, a significant difference in CE activity was noted between brain tumors and normal brain tissue. However, CE activity exhibited similarity between meningiomas and gliomas, the finest results and very much necessary for understanding drug metabolism that is been reported here for the first time. Lower and similar average specific activities were obtained for meningiomas and gliomas (Table 1) as compared to normal brain. However in brain tumors' some peculiar patterns are particularly useful for biological interpretation of tissue differentiation and cell metabolism [27].

Certainly, the present study is due to lower CE activity of brain tumors which in turn has a poor effect on anticancer drug metabolism for brain tumors. However, none of the earlier studies have shown particular tumors about Carboxylesterase-specific activities.

The brain tumors pathology relation for enzyme CE activity varies with morphological features and grades of the tumor. The lowest levels of CE were noted in angiomatous meningioma G-I ( $11.79 \pm 3.018$  nmol/min./mg of protein), which is different from other meningiomas by their morphological features with many small or large vascular channels that may predominate over its meningeothelial elements.

#### **4.5 Comparative study of CE expression in meningiomas and glioma primary cell culture**

The Brain tumor primary cell lines utilized up to passages of 1 to 7 in meningiomas and 1 to 4 in Gliomas respectively. The majority of primary cell cultures expressed lower CE as compared to their parent tumors and the normal human brain.

Most of the meningioma cell lines exhibited lower CE-specific activity concerning parent tumor, except Meningothelialbase frontal G-I, atypical transitional G-II, and fibroblastic G-I (Fig3B and 3C), expressed higher CE activity in passage-1, subsequently, CE activity varies among respective passages. The reason is unknown though may be due to cell viability and studies have to be continued with more passages for the same tumor samples.

All glioma parent tumors and most of their primary cell lines expressed significantly lower CE-specific activity as compared with a normal brain. However higher CE activity is expressed in passage-1 of GBM G-IV (progression from low to high grade) and anaplastic oligodendroglioma G-III (Fig 4B) as compared to their parent tumor. While in Ewing's Sarcoma metastasis CE specific activity increased in passage-3 but expressed lower CE activity than parent tumor (Fig 4B) which may be due to change in the viability of different cell types and growth patterns.

#### **4.6 Significance of the CE study in Brain tumor and derived primary cell culture**

The significant similar relation of CE activity between the meningiomas (n=50)  $20.96 \pm 5.071$  and gliomas (n=61)  $20.77 \pm 4.4644$  nmoles/min./mg respectively, exhibited significantly lower CE activity as compared to normal brain (n=106) of  $52.355 \pm 11.15$  nmol/min./mg of protein. Primary cell cultures with respective passages expressed lower CE activities than parent tumors respectively which fluctuates and depleting as the number of passages have undergone. However, some of the Meningiomas G-I and G-II expressed higher CE activity in few passages than parent tumor but lower as compared to normal brain.

This suggests that one of the reasons for the failure in the metabolism activation of anticancer drugs for both benign and malignant tumor treatment.

The protein content is always higher in parent tumors and for passage-1, this refers to more number of cells (endothelial cells) that may also matter for more CE activity, and some tumor passages-2 also expressed higher CE activity as compared to parent tumor but lower than normal brain CE activity.

However, there are no reports for a low level of CE-specific activity in all types of WHO-grade brain tumors and their derived cell culture. Thus current results have shown lower CE-specific activity in the case of Benign and malignant tumors and successfully shown lower expression of CE activity in brain tumor-derived primary cell culture. The exact reason is not yet known however it may be due to cell migration, types of cells interaction, and growth.

Interestingly both Benign meningiomas and malignant gliomas exhibit similar CE-specific activity that confirms some of the main reasons for the failure of chemotherapy since the amount of CE drug-

metabolizing enzymes was lower in benign and malignant brain tumors as mentioned above. These results provide an idea in the future to increase the CE level with modulators' anticancer drug metabolism. Therefore CE has to be activated by modulators or by cloning the CE gene.

Recent findings with our current experiments of Brain tumor p53 mutant LN 229 and U251 cell lines expressed lower CE activity while expressing significantly higher CE activity for LiCl<sub>2</sub> treated cells (not reported). This exactly confirms that Lithium is a positive modulator that enhances CE activity and has got anticancer activity. Therefore it can be conjugated with anticancer drugs for their metabolic efficiency and targeting on Brain tumor cells for better treatment.

To achieve the goal, different type's normal brain tissues should be collected from the region where the origin of the tumor has occurred including for eg. meningiomas transformed from meninges cells. Therefore CE activity has to be determined for meningiomas by comparing with meninges to understand efficiency of drug metabolism. Hence Carboxyl esterase can also be made as biomarkers by developing kits for diagnosis purposes. Thus the current study promotes applications in the future by determining tumor and cell culture CE specific activity for designing anticancer drugs for efficient metabolism and Targeting.

## 5. Conclusions:

The specific activity of carboxylesterase (CE) in brain tumors for all WHO grades of meningiomas and gliomas and in their derived primary cell culture exhibited significantly lower CE activity as compared to normal human brain. The Native and SDS PAGE displayed a high intense single protein band in crude extract brain tumors as compared to normal brain.

The significant similar relation of CE activity between the meningiomas (n=50)  $20.96 \pm 5.071$  and gliomas (n=61)  $20.77 \pm 4.4644$  nmoles/min./mg respectively, exhibited significantly lower CE activity as compared to normal brain (n=106) of  $52.355 \pm 11.15$  nmol/min./mg of protein. (Let editor take the decision) This suggests that one of the reasons for the failure in the metabolism activation of anticancer drugs for both benign and malignant tumor treatment. Hence the current study of CE activity analysis with brain tumors confirms monitoring in the treatment and selecting the better drug for experimental designing towards efficient anticancer drug metabolism for even deciding dosage and better therapeutics.

## CONSENT (WHERE EVER APPLICABLE)

"All authors declare that 'written informed consent was obtained from the patient (or other approved parties) for publication of this case report and accompanying images. A copy of the written consent is available for review by the Editorial office/Chief Editor/Editorial Board members of this journal." (Attached file-permission to handle the samples)

## Ethical approval

According to standard national guidelines of Brain Bank, Department of

Neuropathology, NIMHANS National brain tissue repository wherein fresh brain tissue samples were obtained at autopsy after informed consent is available for research purposes.

#### COMPETING INTERESTS DISCLAIMER:

Authors have declared that no competing interests exist. The products used for this research are commonly and predominantly use products in our area of research and country. There is absolutely no conflict of interest between the authors and producers of the products because we do not intend to use these products as an avenue for any litigation but for the advancement of knowledge. Also, the research was not funded by the producing company rather it was funded by personal efforts of the authors.

#### References:

1. Ross MK, Borazjani A. Enzymatic activity of human carboxylesterases. *Curr Protoc Toxicol Unit.* 2007; 24: 1-14.
2. Redinbo MR, Potter PM. Mammalian carboxylesterases: from drug targets to protein therapeutics. *Drug Discov Today.* 2005;10:313–325
3. Potter PM, Wadkins RM. Carboxylesterases–detoxifying enzymes and targets for drug therapy. *Curr Med Chem.* 2006; 13: 1045–1054.
4. Wadkins RM, Morton CL, Weeks JK, Oliver L, Wierdl M, Danks MK et al Structural constraints affect the metabolism of 7-ethyl-10-[4-(1-piperidine)-1-piperidino] carbonyl oxy camptothecin (CPT-11) by carboxylesterases. *Mol Pharmacol* 2001. 60: 355–362.
5. Ketterman AJ, Bowles MR, Pond SM. Purification an characterization of two human liver carboxylesterases. *Int J Biochem.* 1989; 21: 1303–1312.
6. Hojring, N., Svensmark, O. J. Carboxylesterases With Different Substrate Specificity In Human Brain Extracts. *Neurochem.,* 1976; 27: 523–528.
7. Yamada, T., Hosokawa, M., Satoh, T., Moroo, I., Takahashi, M., Akatsu, H., and Yamamoto, T. Immunohistochemistry with an antibody to human liver carboxylesterase in human brain tissues. *Brain Res.,* 658: 163–167, 1994.
8. Zhang W, Xu G, McLeod HL (2002) Comprehensive evaluation of carboxylesterase-2 expression in normal human tissues using tissue array analysis. *Appl Immunohistochem Mol Morphol* 10(4): 374–80

9. Mori M, Hosokawa M, Ogasawara Y, Tsukada E, Chiba K. cDNA cloning, characterization and stable expression of novel human brain carboxylesterase FEBS Lett. 1999; 458: 17-22.
10. Satoh, T., Hosokawa, M. Annu. The mammalian carboxylesterases:from molecules to functions. Rev. Pharmacol. Toxicol.1998; 38: 257–288.
11. Tetsuo Satoh, Palmer Taylor, William F. Boston, Sonal P. Sanghani, Masakiyo Hosokawa, et al. Current Progress on Esterases: From Molecular Structure to Function 2002; 30: 488-493. DOI: <https://doi.org/10.1124/dmd.30.5.488>
12. Dandan Wang, Liwei Zou, Qiang Jin, Jie Hou, Guangbo Ge, Ling Yang. Human carboxylesterases: a comprehensive review. Acta Pharmaceutica Sinica B 2018; 8: 699–712.
13. Saltz LB. Clinical Use of Irinotecan: Current Status and Future Considerations. Oncologist.1997; 2: 402-409.
14. Rothenberg ML. Irinotecan (CPT-11): Recent Developments and Future Directions–Colorectal cancer and beyond. Oncologist 2001; 6: 66–80.
15. TC Chen, S Su, D Fry, L Liebes. Combination therapy with irinotecan and protein kinase C inhibitors in malignant glioma. Cancer. 2003; 97: 2363-73.
16. Weijun Wang, Alex Gandhi, Leonard Liebes, Stan G. Louie, Florence M. Hofman, Axel H. Schönthal, and Thomas C. Chen, Effective conversion of irinotecan to SN-38 after intratumoral drug delivery to an intracranial murine glioma model in vivo J Neurosurg 2011; 114: 689–694.
17. Margarita Gutova, Leanne Goldstein, Marianne Metz, Anahit Hovsepian, Lyudmila G. Tsurkan, Revathiswari Tirughana, Lusine Tsaturyan, Alexander J. Annala, Timothy W. Synod, Zheng Wan, Robert Seeger, Clarke Anderson, Rex A. Moats, Philip M. Potter, and Karen S. Abody. Optimization of a Neural Stem-Cell-Mediated Carboxylesterase/Irinotecan Gene Therapy for Metastatic Neuroblastoma. Molecular Therapy Oncolytics 2017; 4: 67-76.
18. Prabha M, Ravi V, N. Ramachandra Swamy. Activity of hydrolytic enzymes in various regions of normal human brain tissue Ind J Clin Biochem. 2013; 28: 283-291. DOI 10.1007/s12291-012-0273-0.
19. Lowry OH, Rosebrough NJ, Farr AR., Randoll RJ. 'Protein measurement with the Folin- phenol reagent. J Biol Chem. 1951; 193: 265-275.
20. Hartree EF. Determination of proteins: A modification of the Lowry method that gives a linear photometric response. Anal Biochem 1972; 48: 422-427.

21. Gomori G, R D Chessick. Histochemical studies of the inhibition of esterases. *J Cell Physiol.* 1953; 411: 51-63.
22. Asperen. VK. J. A study of housefly esterases by means of a sensitive colorimetric method. *Insect Physiol* 1962; 8: 401-416.
23. Manfred Westphal, Hildegard Meissner. Establishing Human Glioma-Derived Cell Lines (Chapter 8) Edited by Jennie P. Mather and David Barnes, *Methods in Cell Biology.* Elsevier, 1998; 57: 147-165.
24. Laemmli UK. Cleavage of structural proteins during the assembly of the head of bacteriophage T4. *Nature.* 1970;227:680–685
25. Canal P, Gay C, Dezeuze A, Douillard JY, Bugat R, Brunet R, et al. A. Pharmacokinetics and pharmacodynamics of irinotecan during a phase II clinical trial in colorectal cancer. *Pharmacology and Molecular Mechanisms Group of the European Organization for Research and Treatment of Cancer J Clin Oncol* 1996; 14: 2688-2695.
26. Fabiani A, Baggio GF, Croveri G, Careglio A, Schiffer D. Zymographic characteristics of soluble and bound esterases in nervous tissues and brain tumors. *J Neurosurg Sci.* 1974; 18: 89-97.
27. Hayato Ogasawara, Kazuto Nishio, FumihikoKanzawa, Yong-Sik Lee, Yasunori Funayama, Tatsuo Ohira, et al. Intracellular carboxyl esterase activity is a determinant of cellular sensitivity to the antineoplastic agent KW-2189 in cell lines resistant to cisplatin and CPT -11. *Jpn. J. Cancer Res.* 1995; 86:124-129.
28. Lynn Feun, Niramol Savaraj, Macus T Kuo et al *Topoisomerase I inhibitors for the treatment of brain tumors.* *Expert Rev Anticancer Ther.* 2008; 8: 707-716. DOI 10.1586/14737140.8.5.707
29. Marianne Z. Metz, Margarita Gutova,\* Simon F. Lacey, Yelena Abramyants, Tien Yo, Megan Gilchrist, Revathiswari Tirughana, Lucy Y. Ghoda, Michael E. Barish, Christine E. Brown, Joseph Najbauer, Philip M. Potter, Jana Portnow, Timothy W. Synod, Karen S. Aboody. Neural stem cell-mediated delivery of irinotecan-activating carboxylesterases to glioma: Implications for clinical use. *Stem cells translational medicine* 2013; 2: 983–992.
30. SH Hong, H J Lee, J AN, I Lim, C Borlongan, KS Aboody and SU Kim, Human neural stem cells expressing carboxyl esterase target and inhibit tumor growth of lung cancer brain metastases. *Cancer Gene Therapy* 2013; 20: 678–682. doi:10.1038/cgt.2013.69

31. Prabha.M, Ravi V, Shetty KT, Swamy NR. The pineal gland of elevated hydrolytic enzyme activities and similar carboxylesterase activity to the rest of the brain regions. Proceedings of the National conference in Chemistry. Sept 27–29; Bangalore, 2006.
32. Prabha M. A Comparative biochemical study on hydrolytic enzymes in normal postmortem human brain, brain tumors and in their derived cell lines. Ph.D. thesis. NIMHANS and Bangalore University 2005.
33. Prabha.M, Ravi V, Swamy NR ---“Carboxyl esterase specific activity significantly lowers in all grades of Brain tumors in parent tumors and in many derived primary cell culture” Oral presentation in conference “Advances in Biotechnology and Biotherapeutics” (ICABBS-2017-Abstract assigned as 1014A ) March 8-10 2017, Sathyabama University, Chennai

### **Abbreviations**

CE-Carboxylesterases

BSA--Bovine serum Albumin solution

MEM (SIGMA)-- Minimal essential medium

FCS-- Fetal calf serum

v/v –Volume/Volume

Mg—Milligram

TVG --(2% trypsin, 0.2% versene and 10% glucose) TVG (2% trypsin, 0.2% versene and 10% glucose)

TBS--tris buffered saline

PBS--phosphate buffered saline

PMSF—poly methyl sulphonyl fluoride

PAGE –Poly acrylamide gel electrophoresis

EM---Electron Microscope

GBM—Glioblastoma Multiforme

### **APPENDIX**

**Supplementary (provided in another file)**