

# Screening of lentil genotypes against highly aggressive strain of *Fusarium oxysporum* f. sp. *lentis*

## ***Abstract:***

Lentil is one of the most nutritious pulse crops known as masur and grown as a rainfed crop throughout the world in winter season. It is rich in protein, starch, micronutrients and dietary fiber. In the global scenario, India ranked first in the area and second in the production with Bihar being one the major lentil growing state. The majority of the lentil crop is grown in Tal area of the state. As it is cultivated as a rainfed crop, it gets severely affected by several biotic and abiotic stresses. Among the biotic stresses, Fusarium wilt, caused by *Fusarium oxysporum* f. sp. *lentis* (*Fol*) is one of the major fungal diseases and remarkably causing severe crop damage from vegetative to reproductive stage producing significant yield reduction. *Fol* isolate exhibit great variability and aggressiveness based on agro- climatic conditions. AGLF-11 isolate of *Fol* collected from Tal area of Bihar was found to be highly aggressive based on previous studies. For this, 50 diverse genotypes were screened against this isolate under greenhouse condition, out of which 14 genotypes showed high susceptibility, 29 genotypes showed moderate susceptibility, 5 genotypes exhibited moderately resistance and only 2 genotypes (L 7920 and DPL 58) exhibited resistance reaction.

## **Introduction:**

Lentil (*Lens culinaris* Medikus subsp. *culinaris*), also known as masur are grown as a rainfed crop throughout the world in winter season. It is herbaceous, annual, self -pollinated pulse crop of Fabaceae family with erect / sub-erect growth habit. It is diploid ( $2x=2n=14$ ) with genome size 4063 Mbp. [3][21] It is rich in protein (24-32 %), starch (63 %), micronutrients and dietary fiber (11 %) [13]. It is one of the oldest domesticated pulse crops grown for over 8,000 years. This crop is believed to be originated in Mediterranean region (Turkey-Syria-Iraq region) having the position of 6<sup>th</sup> major pulse crop grown in more than 50 countries of the World, with 39.79 per cent and 22.79 per cent of the world area and production respectively [1]. India ranked first in terms of area and second in volume with Bihar being one the major lentil growing state

with 0.15 m hectare area with production of 0.12 m tones having productivity of 793 kg/hectare [8]. The majority of the lentil crop is grown in Tal area of the state. Lentil can withstand harsh environmental conditions including drought and high temperature and can be cultivated in semi-arid areas without irrigation.[4]. It may grow in a variety of soil types. Moreover, the crop can be cultivated in rotation with cereal crops to help reduce soil erosion, weed management, and nitrogen fertiliser requirements. Cultivation of lentil is more profitable than other crops under rain-fed conditions [6]

Production of lentil crop is constrained by a number of abiotic and biotic stresses. Abiotic factors including drought, terminal heat, and salt susceptibility cause considerable yield loss. Among biotic stresses fungal diseases are most common which greatly reduces the crop production and productivity. Among fungal diseases, ascochyta blight and fusarium wilt are major diseases which reduces its yield remarkably [18] [15]. Wilt in lentil, caused by *Fusarium oxysporum* f.sp *lentis* (*Fol*), is a one of the major cause of crop loss on every continent except Australia where lentils are produced [19] [4] [26]. It infects its host by entering through the root and blocking the vascular system (xylem and phloem), preventing water and nutrient transfer to the plant, causing wilting, discoloration, and eventually causing death [27]. Wilt disease occurs at both pre-emergence as well as post emergence stages. In case of post emergence infection, plants are affected at seedling stage [27] [7]. If it infects during seedling to pod filling stage it can cause yield loss up to 50-78% and infection during seedling stage can cause yield loss up to 100 % [6]. The disease is primarily transmitted through contaminated soil and plant debris, where it infects the plant through the root system [25]. Disease management is mandatory to ensure the stable lentil production. Development of resistant cultivars is the most long-term and cost-effective solution to this challenge [22] [2]. *Fol* isolate exhibit great variability and aggressiveness based on agro-climatic conditions. Studies for genetic diversity have been done by researcher across several countries. According to experiment conducted in lab of department of Molecular Biology and Genetic Engineering, Bihar Agricultural University Sabour, Bhagalpur in which 12 *Fol* isolates, collected from major lentil growing areas in Bihar were evaluated for its aggressiveness on two identified wilt resistant (PL-6) and susceptible (JL-3) checks. Among the 12 isolates, AGLF-11 isolate was found to be highly aggressive [16]. The released varieties exhibit variation for resistance, there hasn't been any evidence of a high level of wilt resistance. Therefore, stable

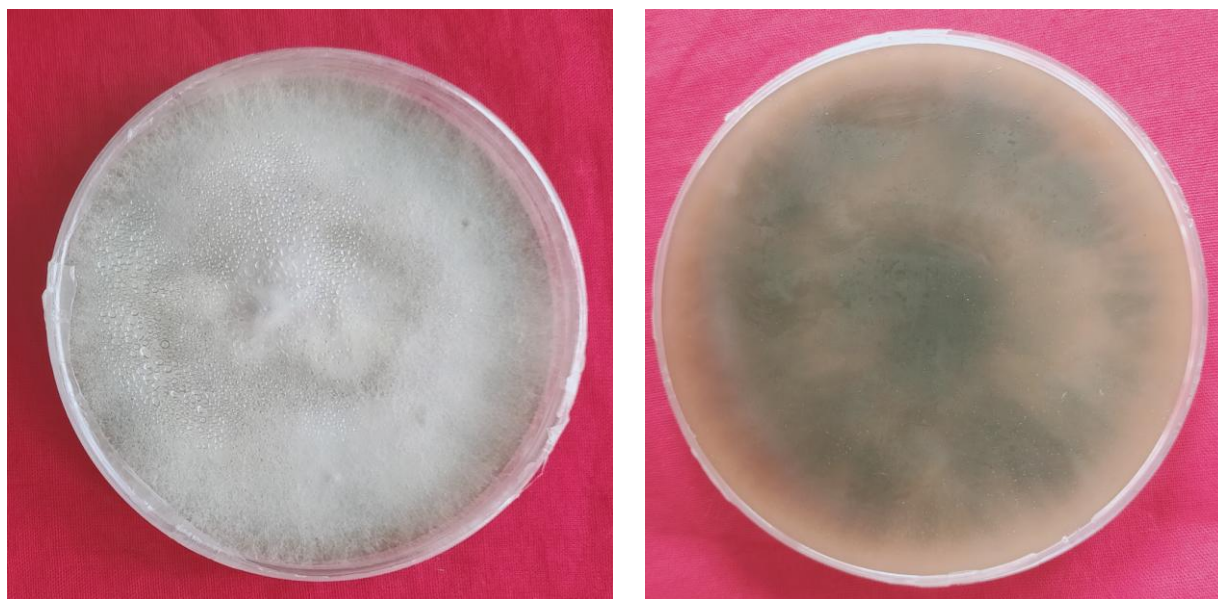
sources are essential for breeding wilt resistant varieties. Keeping that in view, the present experiment was carried out to identify lentil genotypes resistant against this highly aggressive strain of *Fol* under greenhouse screening.

## **Materials and Methods:**

Fifty lentil genotypes procured from various parts of country and ICARDA, Lebanon and screened against highly aggressive *F. oxysporium* f.sp. *lentis* AGLF-11 / *Fol-11* isolate collected from Mokama (Tal) area in Bihar, India during 2020-2021 crop season under controlled condition using sick soil micro pots. Screening was carried out in greenhouse of Bihar Agricultural University, Sabour (Bhagalpur), Bihar, India. The effect of this isolate on pre- and post-germination mortality of these 50 genotypes was studied. The genotypes used in this experiment along with their origin are enlisted in Table 1. Screening for lentil wilt resistance must account two factors first is the varying time of symptom development among genotypes and other is uneven and patchy distribution of disease in the field. [14]. Simulation of natural soil and ambient conditions, as well as consistent inoculum load across all samples, are required for successful and efficient screening for resistance to soil borne pathogens such as *Fusarium* spp.

### ***Fol* isolate used:**

Highly aggressive *Fol* isolate, AGLF-11/*Fol-11* was collected from major lentil growing region mainly collected from Tal area of Barh, Patna, Bihar, India in year 2019. Different *Fol* isolates have different morphological characteristics viz. white, light pink, pink and dark pink colony colour and sparse, fluffy, centrally fluffy and crystal growth patterns. The colony colour of this isolate is mainly pink with sparse growth pattern (Fig. 1)



**Fig. 1: Plates of AGLF-11 Isolate on Potato dextrose agar medium**

**Table.1 The list of materials used in the study along with its source**

| S.No | Genotypes    | Source  |
|------|--------------|---|
| 1.   | JL 3         | JNKV, Jabalpur                                  |
| 2.   | P-13108      | Procured from IARI, New Delhi                   |
| 3.   | Noori        | IIPR, Kanpur                                    |
| 4.   | GP-3221      | IIPR, Kanpur                                    |
| 5.   | LKH-I        | Collected from Lakhisarai, Bihar                |
| 6.   | Moitree      | BCKV, West Bengal                               |
| 7.   | Titua        | Local collection                                |
| 8.   | BRL-2        | Selection from landrace of Rajoun block, Banka  |
| 9.   | VL 138       | VPKAS, Almora                                   |
| 10.  | DBGL 105     | ICAR-Research complex for Eastern Region, Patna |
| 11.  | Pusa Vaibhav | IARI, New Delhi                                 |
| 12.  | DBGL-62      | ICAR-Research complex for Eastern Region, Patna |
| 13.  | DBGL-135     | ICAR-Research complex for Eastern Region, Patna |
| 14.  | IG -195      | Procured from IARI, New Delhi                   |

|     |            |                               |
|-----|------------|-------------------------------|
| 15. | IG- 122133 | Procured from IARI, New Delhi |
| 16. | P-15115    | Procured from IARI, New Delhi |
| 17. | JL-1       | JNKV, Jabalpur                |
| 18. | JL-7       | JNKV, Jabalpur                |
| 19. | P 3236     | Procured from IARI, New Delhi |
| 20. | P 43120    | Procured from IARI, New Delhi |
| 21. | DKL 37     | Procured from IARI, New Delhi |
| 22. | IG 559831  | Procured from IARI, New Delhi |
| 23. | NDL-I      | NDUAT, Faizabad               |
| 24. | MC 6       | Procured from IARI, New Delhi |
| 25. | Flip 96-51 | ICARDA, Lebnon                |
| 26. | PL-6       | GBPUAT, Pantnagar             |
| 27. | PL-8       | GBPUAT, Pantnagar             |
| 28. | PL-27      | GBPUAT, Pantnagar             |
| 29. | DPL-62     | IIPR, Kanpur                  |
| 30. | DPL-316    | IIPR, Kanpur                  |
| 31. | IPL 526    | IIPR, Kanpur                  |
| 32. | KLS-218    | CSAU, Kanpur                  |
| 33. | HUL-57     | BHU, Varanasi                 |
| 34. | Pusa Ageti | IARI, New Delhi               |
| 35. | BRL-3      | Selection from SL-2-24        |
| 36. | Shivalik   | IARI, New Delhi               |
| 37. | IPL 406    | IIPR, Kanpur                  |
| 38. | IPL 315    | IIPR, Kanpur                  |
| 39. | DPL 58     | IIPR, Kanpur                  |
| 40. | DPL 15     | IIPR, Kanpur                  |
| 41. | PL-4       | GBPUAT, Pantnagar             |
| 42. | PL- 639    | GBPUAT, Pantnagar             |
| 43. | PL- 406    | GBPUAT, Pantnagar             |

|     |         |                   |
|-----|---------|-------------------|
| 44. | IPL-321 | IIPR, Kanpur      |
| 45. | K-75    | CSAU, Kanpur      |
| 46. | PL-05   | GBPUAT, Pantnagar |
| 47. | L-4717  | IARI, New Delhi   |
| 48. | L-4147  | IARI, New Delhi   |
| 49. | L-4771  | IARI, New Delhi   |
| 50. | L-7920  | IARI, New Delhi   |

### Greenhouse screening:

AGLF-11 isolate was maintained in laboratory using potato dextrose agar (PDA) medium supplemented with streptomycin sulphate and stored in a refrigerator (4°C) [9]. Sub culturing of isolate was done time to time. The isolate was mass multiplied as per the protocol [12] with necessary modifications. Initially, sorghum grains were soaked in water overnight. Excess water was drained out and seeds were soaked in dextrose water @ 100g in 1 litre water (1-1.5 hrs). It is then spread and air dried on the clean blotting paper. Moistened grains (about 150 g) were filled in each autoclavable poly bags and autoclaved for 30 minutes at 121 °C temperature and 15 lbs. psi pressure. The fungal mycelium bit of pure culture of AGLF-11 isolate was inoculated under aseptic condition in the poly bags containing grains and incubated for 12-14 days at 25±2 °C. Meanwhile, polybags were shaken regularly to facilitate early growth of the fungus or to avoid clumping of grains. Due to mycelial growth of the test fungus, the grains turned whitish.

To prepare sick soil micropots, the grains colonized by isolate were mixed in the soil [12]. Fusarium wilt susceptibility of each genotype was tested in infected soil. For this, sterilized sandy-loam soil was mixed with mass multiplied culture of AGLF-11 @ 100g / kg soil. Seeds of 50 lentil genotypes were rinsed with distilled water. 10 Seeds of each lentil genotypes were sown in each well of the infected soil following Completely Randomized Design (CRD). The experiment was carried out in three replications for each genotype. Controlled soil micropot was also used without AGLF-11 isolate infection with each genotype. Observations on pre-germination mortality and post-germination mortality percentage were recorded up to 15 days.

The post emergence mortality was recorded time to time and the final data was recorded at the end of the experiment on 15th day.

The pre germination mortality and post germination mortality percentage were recorded using following formula:

$$\text{Pre germination mortality (\%)} = \frac{\text{Total germination of healthy seeds} - \text{Total germination of treated seeds}}{\text{Total germination of healthy seeds}} \times 100$$

$$\text{Post germination mortality (\%)} = \frac{\text{Total germination of treated seeds} - \text{Plant survived in treated seeds}}{\text{Total germination of treated seeds}} \times 100$$

Where, complete yellowing and dropdown of the plants were considered complete mortality of the plants.

The genotypes on the basis of mortality percentage recorded were categorized in to different categories viz. immune resistant, moderately resistant, moderately susceptible and highly susceptible on a scale of 1 to 9 (**Table.2**) [3].

**Table 2: Disease rating scale for Fusarium wilt:**

| S.No. | Rating | Mortality (%) | Disease reaction            |
|-------|--------|---------------|-----------------------------|
| 1.    | 1      | ≤ 1 %         | Immune (I)                  |
| 2.    | 3      | 2-10 %        | Resistant (R)               |
| 3.    | 5      | 11-20 %       | Moderately resistant (MR)   |
| 4.    | 7      | 21-50 %       | Moderately susceptible (MS) |
| 5.    | 9      | >50 %         | Highly susceptible (HS)     |

## Results and Discussion:

In this study, fifty lentil genotypes were screened against fusarium wilt in control condition using sick soil micropot technique under controlled condition. The recorded pre-germination mortality and post-germination mortality percentage data are enlisted in Table 3. A perusal of data in the table-3 reveals that, a significant wide range of pre and post germination mortality was observed among all the genotypes of lentil. The pre-germination mortality among

all the genotypes ranged between 9.09 to 80.23 %. The highest pre-germination mortality was observed in Titua genotype treatment which was about 80.23 % and the lowest pre-germination mortality was observed in the treatment of L7920 genotype having only 9.09 %. Other genotypes also exhibited significant pre-germination mortality percentage that ranges from 9.62 to 73.58 %. This highly aggressive isolate of *Fol* not only affected the germination of seed but also caused significant post-germination mortality in some genotypes. Post-germination mortality was ranged between 12.01 to 30.56 %. The highest post germination mortality was observed in treatment of Titua genotype which was 30.56% while, genotypes L7920 showed lowest post germination mortality percentage which was 12.01 %. Several genotypes with high level of resistance under controlled condition were identified.

**Table.3: Effect of AGLF-11 isolate on pre- and post-germination mortality on various lentil genotypes**

| S.No. | Genotypes  | Pre-germination mortality (%) | Post-germination mortality (%) |
|-------|------------|-------------------------------|--------------------------------|
| 1     | JL-3       | 48.04                         | 23.15                          |
| 2     | P-13108    | 39.96                         | 18.28                          |
| 3     | Noori      | 32.65                         | 16.24                          |
| 4     | GP 3221    | 48.04                         | 23.15                          |
| 5     | LKH-I      | 61.27                         | 15.87                          |
| 6     | Moitree    | 42.77                         | 21.48                          |
| 7     | Titua      | 80.23                         | 30.56                          |
| 8     | BRL-2      | 37.69                         | 18.28                          |
| 9     | VL-138     | 58.39                         | 13.69                          |
| 10    | DBGL-105   | 41.50                         | 19.39                          |
| 11    | P. Vaibhav | 52.64                         | 22.41                          |
| 12    | DBGL-62    | 72.61                         | 20.56                          |
| 13    | DBGL-135   | 47.92                         | 23.15                          |
| 14    | IG-195     | 28.56                         | 15.02                          |
| 15    | IG 122133  | 30.96                         | 15.02                          |
| 16    | P-15115    | 33.89                         | 24.36                          |
| 17    | JL-1       | 30.17                         | 16.24                          |
| 18    | JL-7       | 49.02                         | 23.15                          |
| 19    | P3236      | 58.19                         | 13.10                          |
| 20    | P43120     | 30.17                         | 16.24                          |
| 21    | DKL 37     | 53.52                         | 23.15                          |
| 22    | IG 559831  | 40.74                         | 18.79                          |
| 23    | NDL I      | 24.02                         | 23.72                          |

|              |            |              |               |
|--------------|------------|--------------|---------------|
| 24           | MC-6       | 22.66        | 14.65         |
| 25           | Flip-96-51 | 30.31        | 15.45         |
| 26           | PL-6       | 43.36        | 20.13         |
| 27           | PL-8       | 26.36        | 15.45         |
| 28           | PL-27      | 26.71        | 14.65         |
| 29           | DPL-62     | 73.09        | 21.67         |
| 30           | IPL-316    | 73.41        | 23.33         |
| 31           | IPL-526    | 73.53        | 21.67         |
| 32           | KLS-218    | 37.04        | 17.68         |
| 33           | HUL-57     | 17.22        | 15.81         |
| 34           | Pusa Ageti | 46.94        | 23.15         |
| 35           | BRL-3      | 62.54        | 15.87         |
| 36           | Shivalik   | 50.87        | 12.04         |
| 37           | IPL-406    | 44.23        | 20.74         |
| 38           | IPL-315    | 62.48        | 14.48         |
| 39           | DPL-58     | 9.31         | 12.78         |
| 40           | DPL-15     | 46.08        | 10.74         |
| 41           | PL-04      | 53.52        | 23.15         |
| 42           | PL-639     | 19.15        | 13.06         |
| 43           | PL-406     | 42.59        | 19.39         |
| 44           | IPL-321    | 25.87        | 15.02         |
| 45           | K-75       | 28.70        | 16.24         |
| 46           | PL-05      | 47.27        | 20.74         |
| 47           | L4717      | 18.85        | 13.97         |
| 48           | L4147      | 19.69        | 13.37         |
| 49           | L4771      | 16.28        | 13.06         |
| 50           | L7920      | 9.06         | 12.01         |
| <b>SE(m)</b> |            | <b>±2.35</b> | <b>±0.923</b> |
| <b>CD</b>    |            | <b>6.60</b>  | <b>2.63</b>   |
| <b>CV</b>    |            | <b>9.85</b>  | <b>8.9</b>    |

### Reactions of lentil genotypes against AGLF-11 isolate of *Fusarium oxysporium* f. sp. *lentis*

At the end of the experiment, the screening of genotypes was done based on reaction of genotypes against AGLF-11 isolate. A perusal of data in Table 4 reveals the same. The result classified the studied lentil genotypes in four groups viz. resistant, moderately

resistant, moderately susceptible and highly susceptible reaction. Out of fifty screened genotypes, L 7920, DPL-58 genotypes exhibited resistance reaction, HUL -57, PL-639, L 4717, L 4147, L 4771 genotypes expressed moderate resistance reaction, genotypes JL-3, P-13108, Noori, GP 3221, Moitree, BRL-2, DBGL-105, DBGL-135, IG-195, IG 122133, P-15115, JL-1, JL-7, P 43120, IG-55983, NDL-I, MC-6, Flip-96-51, PL-6, PL-8, PL-27, KLS-218, Pusa Ageti, IPL-406, DPL-15, PL-406, IPL-321, K-75, PL-05 exhibited moderate susceptibility, while LKH-I, Titua, VL-138, Pusa Vaibhav, DBGL-62, P-3236, DKL-37, DPL-62, IPL-316, IPL-526, BRL-3, Shivalik, IPL-315, PL-04 genotypes expressed high susceptibility reaction against the isolate. None of the genotypes exhibited immune reaction. Similar approaches for screening wilt resistance have been reported by [5] [29] [18] [10]. Twelve accessions were identified as resistant [20]. [17] and [24] have also identified fusarium wilt resistant germplasm lines in lentil under wilt sick plot and controlled condition

**Table 4. Reactions of lentil genotypes against Fusarium wilt (AGLF-11 isolate) in controlled conditions**

| Rating scale | Reaction                    | Mortality (%) | Genotypes   |
|--------------|-----------------------------|---------------|---|
| 1            | Immune (I)                  | ≤ 1 %         | Nil   |
| 3            | Resistant (R)               | 2-10 %        | L 7920, DPL-58  |
| 5            | Moderately resistant (MR)   | 11-20 %       | HUL -57, PL-639, L 4717, L 4147, L 4771   |
| 7            | Moderately susceptible (MS) | 21-50 %       | JL-3, P-13108, Noori, GP 3221, Moitree, BRL-2, DBGL-105, DBGL-135, IG-195, IG 122133, P-15115, JL-1, JL-7, P43120, IG-55983, NDL-I, MC-6, Flip-96-51, PL-6, PL-8, PL-27, KLS-218, Pusa Ageti, IPL-406, DPL-15, PL-406, IPL-321, K-75, PL-05 |

|   |                         |       |  |
|---|-------------------------|-------|--|
| 9 | Highly susceptible (HS) | >50 % | LKH-I, Titua, VL-138, Pusa Vaibhav, DBGL-62, P-3236, DKL-37, DPL-62, IPL-316, IPL-526, BRL-3, Shivalik, IPL-315, PL-04 |
|---|-------------------------|-------|--|

## Conclusion

For successful screening, important information about host-pathogen biology and interaction is required. The availability and accessibility of diverse germplasm collections, as well as the accuracy of the screening methodologies used in the study, are essential for successful disease resistance screening [11]. It's also crucial for identifying susceptible and resistant genotypes, as well as finding suitable resistance parents for use in hybridization. The use of well-established assays in the field and in the greenhouse aids in the identification and selection of wilt resistant donors. In this present research, two genotypes (L 7920, DPL-58) exhibited resistance reaction, along with five genotypes (HUL -57, PL-639, L 4717, L 4147, L 4771) which exhibited moderate resistance against the highly aggressive isolate. These screened resistance genotypes could be used as resistance sources for breeding wilt resistant lentil varieties and cloning of the resistant genes via differential display expression analysis in future research programmes.

## References

1. Adan F, Kumar A, Kumar A, Kishore C, and Kumar R (2020). Study of Genetic Diversity on Yield and Yield Attributing Components in Lentil (*Lens culinaris* Medik.) Under Normal and Late Sown Conditions Current Journal of Applied Science and Technology 39(2): 57-62
2. Bayaa B, Erskine W and Hamdi A (1995). Evaluation of a wild lentil collection for resistance to vascular wilt. Genet. Res. Crop Ev. 42:231–235.
3. Barulina H (1930) Lentil of the U.S.S.R. and of other countries. Bull. Appl. Bot. Plant Breed. Suppl.40:1-319.

4. Beniwal S, Bayaa B, Weigand S, Makkouk K, Saxena MC (1993) Field Guide to Lentil Diseases and insect Pests. International Centre for Agricultural Research in the Dry Areas. Aleppo, Syria, pp. 106.
5. Chandra S, Rajvanshi NK, Kumar A (2019) Evaluation of lentil genotypes against *Fusarium oxysporum f. sp. lentis* under artificial epiphytotic condition.
6. Choudhary AK, Kumar S, Patil BS, Sharma M, Kemal S, Ontagodi TP, Datta S, Patil P, Chaturvedi SK, Sultana R, Hegde VS (2013) Narrowing yield gaps through genetic improvement for Fusarium wilt resistance in three pulse crops of the semi-arid tropics. SABRAO Journal of Breeding and Genetics, 45(03):341-70.
7. Claudius GR and Mehrotra RS (1973). Wilt and root rot disease of lentil (*Lens esculenta*) at Sagar Indian phytopathology, 26: 268-273
8. Directorate of Economics and Statistics, Department of Agriculture and Cooperation. Area, Production and Yield of Lentil (Masur) during 2019-20 in major producing states, 2020.
9. Dubey SC, Singh SR, Singh B (2010). Morphological and pathogenic variability of Indian isolates of *Fusarium oxysporum f. sp. ciceris* causing chickpea wilt. Archives of Phytopathology and Plant Protection, 43(1/3):174-190.
10. Fatima K, Khan MA, Raza MM, Yaseen M, Iqbal MA and Shahbaz MU (2015). Identification of resistant source in lentil germplasm against Fusarium wilt in relation to environmental factors. Acad. Res. J. Agri. Sci. Res. 3: 60-70.
11. Infantino A, Kharrat M, Riccioni L, Coyne CJ, McPhee KE, Grünwald NJ (2006) Screening techniques and sources of resistance to root diseases in cool season food legumes, 147(1):201-21.
12. Kamdi DR, Mondhe MK, Jadesha G (2012) Efficacy of botanicals, bio-agents and fungicides against *Fusarium oxysporum f. sp. ciceri*, in chickpea wilt sick plot. Annals of Biological Research, 3(11):5390-5392.
13. Kumar A, Kumari A, Kumar S, Kumar A, Kumar R R, and Singh P.K (2017). Exploring Genetic Diversity for Heat Tolerance among Lentil (*Lens culinaris* Medik.) Genotypes. Indian Journal of Ecology, 44(4): 90-94
14. Kumar R, Jha DK, Dubey SC and Kumar R (2003) Screening of lentil varieties against fusarium wilt. Journal of Research-Birsa Agricultural University, 15(1):129.

15. Kumar S, Barpete S, Kumar J, Gupta P, Sarker, A (2013) Global lentil production: constraints and strategies. SATSA Mukhapatra-Annual Technical, (17):1-13.
16. Kumari J (2020) Expression analysis of defense responsive genes in lentil against *Fusarium oxysporum* f. sp. *Lentis*. M.Sc. Thesis, Bihar Agricultural University Sabour
17. Mohammadi N, Mohammadi Goltapeh E, BabaieAhari A and Puralibaba H (2011). Pathogenic and genetic characterization of Iranian isolates of *Fusarium oxysporum* f.sp. *lentis* by ISSR analysis. International Journal of Agricultural Technology, 7(1):63-72.
18. Meena JK, Singh A, Dikshit HK, Mishra GP, Aski M, Srinivasa N, Gupta S, Singh D, Tripathi A (2017) Screening of Lentil (*Lens culinaris Medikus sub sp. culinaris*) Germplasm against Fusarium Wilt (*Fusarium oxysporum* f. sp. *lentis*). Int. J. Curr. Microbiol. App. Sci, 6(11):2533-41.
19. Parihar AK, Basandrai AK, Saxena DR, Kushwaha KP, Chandra S, Sharma K, Singha KD, Singh D, Lal HC, Gupta S (2017) Biplot evaluation of test environments and identification of lentil genotypes with durable resistance to fusarium wilt in India. Crop and Pasture Science, 68(11):1024-30.
20. Pouralibaba HR, Perez-de-Luque A and Rubiales D (2015). Histopathology of the infection on resistant and susceptible lentil accessions by two contrasting pathotypes of *Fusarium oxysporum* f.sp. *lentis*. European Journal of Plant Pathology, 148(1):53-63.
21. Roy S, Islam MA, Sarker A, Malek MA, Rafii MY, Ismail MR (2013) Determination of genetic diversity in lentil germplasm based on quantitative traits. Australian Journal of Crop Science, 7(1):14.
22. Sampaio AM, Araújo SD, Rubiales D, Vaz Pato MC (2020) Fusarium wilt management in legume crops. Agronomy, 10(8):1073.
23. Soomro MP, Wagan KH, Hussain K, Dhiloo SP, Soomro MH, Hassan S, Mastoi PM (2018) Response of lentil varieties against Fusarium wilt. Journal of Entomology and Zoology Studies, 6(1):858-62.

24. Stoilova T, Chavdarov P (2006) Evaluation of lentil germplasm for disease resistance to Fusarium wilt (*Fusarium oxysporum* f.sp *lentis*). Journal of Central European Agriculture, 7(1):121-6.
25. Taylor P, Lindbeck K, Chen W, Food R (2007) Lentil Diseases. In: Lentil: An Ancient Crop for Modern Times, Yadav SS, PC Stevenson (Eds.). The Netherlands, pp. 291-313
26. Tosi L, Cappelli C (2001) First report of *Fusarium oxysporum* f. sp. *lentis* of lentil in Italy. Plant Disease., 85:562.
27. Tiwari N, Ahmed S, Kumar S, Sarker A (2018). Fusarium wilt: A killer disease of lentil. Fusarium-Plant Diseases, Pathogen Diversity, Genetic Diversity, Resistance and Molecular Markers.
28. Vasudeva RS, Srinivasan KV (1952) Studies on the wilt disease of lentil (*Lens esculenta* Moench.). Indian Phytopathology, 5:23-32.
29. Yadav NK, Ghimire SK, Shrestha SM, Sah BP, Sarker A, Sah SK (2017) Source of resistant against Fusarium wilt and Stemphylium blight in lentil (*Lens culinaris Medikus*). International Journal of Applied Sciences and Biotechnology, 5(1):102-7.