

**MORPHOMETRIC ANALYSIS OF CHILENAHALLI MICRO-WATERSHED IN THE NORTH-EASTERN DRY ZONE OF KARNATAKA USING GIS AND REMOTE SENSING TECHNIQUES**

**Abstract**

The structure and landform of watershed and their associated stream networks are described mainly by their morphometric parameters and Watershed analysis based on morphometric parameters is very important for watershed planning, since it gives an idea about the basin characteristics regarding slope, topography, soil condition, runoff characteristics, surface water potential and quantify the linear, areal and relief aspects of watershed. Geographic information system and remote sensing techniques were employed for the identification of morphological features, drainage pattern and its planning in basin area. The Shuttle Radar Topography Mission (SRTM) digital elevation model (DEM) 30m resolution was used to digitize study watershed and generate drainage pattern and analysis done using GIS software and excel spreadsheet. The study reveals that Chilenahalli micro-watershed designated as 4<sup>th</sup> stream order and drainage indicate dendritic pattern with mature geomorphic stage and stream order verifies the Horton's law of stream number. The Mean Bifurcation Ratio was found to be 4.46, which indicates low rainfall, shallow weathering and low dissection of the valley and it shows low to medium relief aspect during investigation of the basin. This can be visualised using DEM, relief ratio, ruggedness number, and slope maps of the study area. The drainage density was found to be 2.13 km/km<sup>2</sup> which indicate a low class  $D_d$  value, thereby indicating a poorly drained watershed with low response to hydrological parameters. The texture ratio of the micro-watershed is 3.52, which indicated coarse texture of drainage basin and the values of Form Factor, Circulatory ratio and Elongation ratio may imply an oval shape of the basin with a slightly elongated main stream and the length of overland flow values in this study is 0.23 km which shows moderate infiltration and percolation characteristics of soil. The study which also helps in planning erosion control strategy, prioritization of watershed and management practices for soil and rainwater conservation. The research study helps to formulate the selection and adoption of crop management practices by preparing soil map of the watershed in future.

*Keywords:* digital elevation model, GIS, remote sensing, watershed morphometric analysis

**1. Introduction**

Watershed is an area of land where precipitation collects and drains of in to a common outlet such as into a river, bay, or other body of water. The structure and land form of watershed and their associated stream networks are described mainly by their morphometric parameter (Farrukh Altaf et al., 2013). Morphometry deals with mathematical measurement of morphometric parameters of drainage basin. In geomorphology, quantitative description and analysis of landforms are practiced (Sukristiyanti et al., 2018). Morphometric analysis generally applied to a particular kind of landform or to drainage basins. Watershed morphometry indices can be used to determine the shape and hydrological properties of a drainage basin. Application of quantitative techniques in morphometric analysis of drainage basins was initially undertaken by (Horton, 1932; Strahler, 1964). Watershed analysis based on morphometric parameters is very important for watershed planning since it gives an idea about the basin characteristics regarding slope, topography, soil

condition, runoff characteristics, surface water potential, etc. (Chandrashekar et al., 2015). To prepare a comprehensive watershed development plan, it becomes necessary to understand the permeable nature of subsurface, infiltration and runoff status and drainage pattern of the region where morphometric analysis will be carried out (Clarke et al., 1996). Geographical information system (GIS) has emerged as an efficient tool in delineation of watershed and drainage pattern and its planning. GIS and remote sensing techniques can be employed for the identification of morphological features and analyzing properties of basin (Waikar and Nilawar, 2014). The morphometric analysis of watershed aims to know and correlate the aspects of linear, areal, and relief parameters (Abboud and Nofal, 2017). They are stream order, stream number, stream length, mean stream length, stream length ratio, bifurcation ratio, mean bifurcation ratio, drainage density, drainage texture, stream frequency, relief ratio, form factor, elongation ratio, circularity ratio, length of overland flow are the most common morphometric parameters (Horton, 1932).

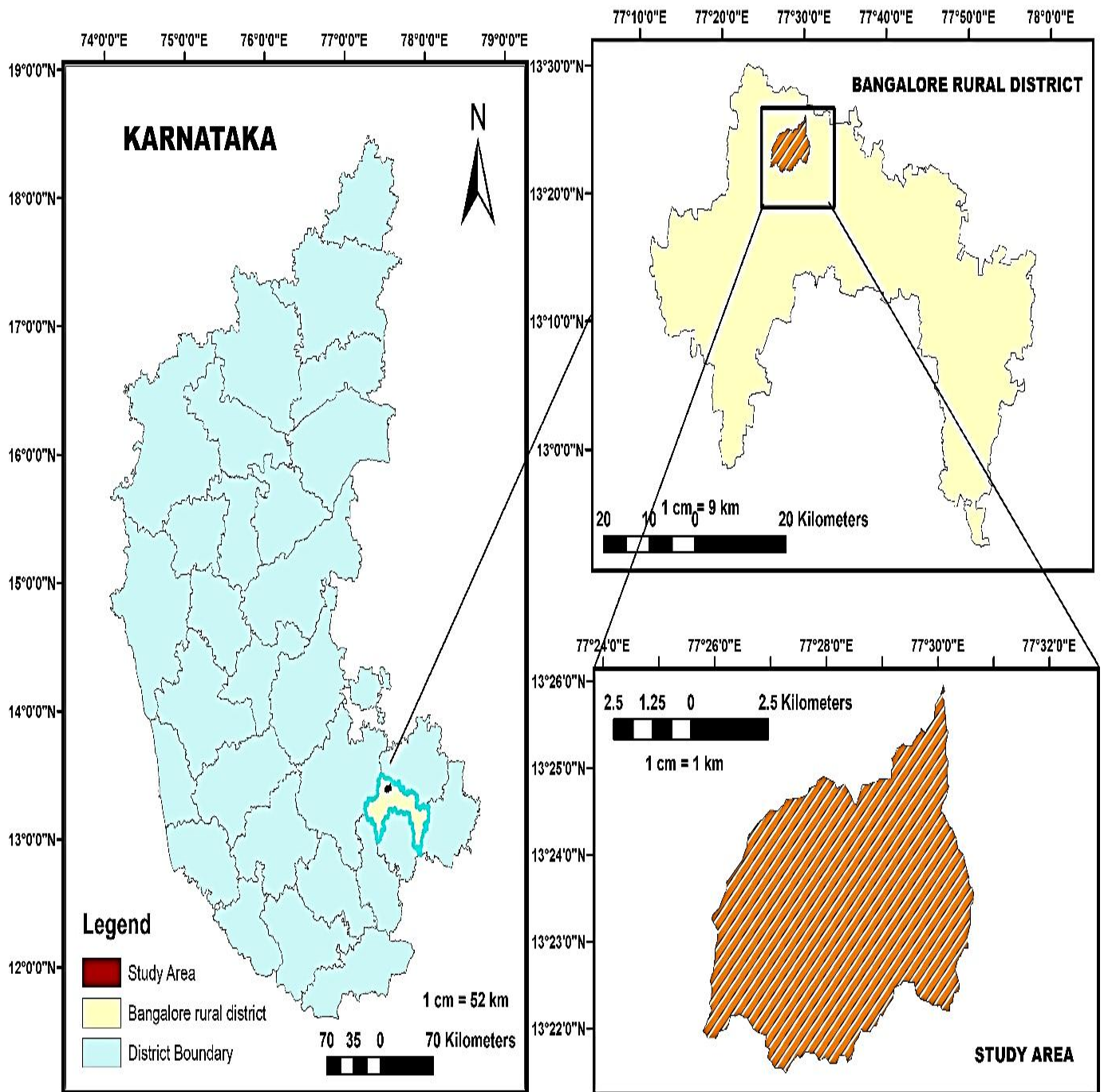
The objective of the study is to investigate the morphometry of the Chilenahalli Micro-watershed which affects the hydrological process using RS and GIS tool is the objective of this paper. Understanding the drainage basin morphometric parameters play a vital role in planning and prioritizing the watershed. The present study bridges the connection between surface morphometry and drainage characteristics of a drainage basin to produce effective information as a part of basin management.

## **2. Materials and methods**

### *2.1 Description of study area*

The Chilenahalli Micro-watershed covers 40.42 km<sup>2</sup>. It is situated in the Doddaballapura taluk, Bangalore rural district, and north-eastern dry zone of Karnataka. Its geographic extent is 13°22' south to 13° 26' north and 77° 21' west to 77° 31' east (Fig. 1). Administratively, it is fully bounded Doddaballapura taluk and the Micro-watershed drains water to Gundamagere Lake situated at Sonnenahalli and Gundamagere villages. Most of its rainfall occurs in the monsoon season.

The climate in the study area has three different seasons. The premonsoon starts from January to May. This period can be divided into winter (from January to February) and summer (from March to May). Winter is characterized by generally clear skies and very little rainfall. From April onwards, erratic thunderstorms occur more frequently during the month of May. The coldest months are December and January (CGWB, 2008). The watershed has the hottest month in April and coldest in December with temperature fluctuations remarkably stable. It experiences minimum temperature of 15°C and maximum temperature of 33.6°C. The watershed has two rainfall seasons i.e. from June to September and October to November with opposite wind regimes and, of average rainfall is 802mm. (Koti et al, 2019). The area is covered with uplands on gneisses and granites, which are suitable for agriculture. Most of the region is characterized by rolling topography, with undulating and gently sloping landscape, and the north-western part is covered with hills and hulikunte forest. The soils are broadly classified into categories viz loamy soil, Lateritic soil and Red sandy soil. Red loamy soils generally occur on hilly to undulating land slope on granite and granite gneisses. The main crops grown in the area are finger millet, jowar, Bajara, Maize, Wheat pulses oilseeds like groundnut, sunflower vegetables fruits and cash crop like sugarcane (CGWB, 2008). Chilenahalli has a total population of 635 peoples, out of which male population is 315 while female population is 320. Literacy rate of Chilenahalli village is 53.54% out of which 63.81% males and 43.44% females are literate. There are about 152 houses in Chilenahalli village and their main source of income is agriculture (CENSUS, 2011).



**LOCATION MAP OF THE STUDY AREA IN DODDABALLAPUR TALUK, BANGALORE RURAL DISTRICT.**

**Fig.1.**Location map of the study area

## 2.2. Methodology

The Shuttle Radar Topography Mission (SRTM) digital elevation model (DEM) 30m resolution (**Error! Reference source not found.**) was used to digitize study watershed and generate drainage pattern. The data was downloaded from United States Geological Survey (USGS) website. A number of procedures were used to delineate watershed and generate stream networks. Arc GIS 10.4 software was used to analyze the morphologic characteristics of the basin. The study watershed and stream networks are automatically generated from SRTM digital elevation model using arc toolbox in GIS 10.4. The overall methodology used to delineate watershed and generate stream networks is as follows, which were adopted by Bogale, 2021; Mohd Bukari et al., 2013 and presented in Flowchart below.

- 2.2.1 Data collection and clipping: Collect and re-projected the DEM data of extract Area of Interest (AOI) to UTM zone 43 N coordinate system using ArcGIS under Data management tools of Project raster (Fig. 2).
- 2.2.2 Delineation of watershed: The DEM filled out the pits using fill tool under Spatial Analyst tools of Hydrology option. The flow direction and accumulation map of the watershed was created using flow direction and accumulation tools of the same spatial analyst tools of hydrology option. Raster calculation operation was carried out using the threshold value of 5000 to generate the stream networks, and correct location of watershed outlet was selected and delineated watershed with district and state boundaries.
- 2.2.3 Calculation of morphometric characteristics: The watershed boundary was plotted, and the area of the watershed, length and order of the streams were calculated using attribute tables of different layers.
- 2.2.4 Map generation: After delineation of the watershed slope map, contour map aspect map, drainage density and drainage pattern maps were generated using SRTM digital elevation model (DEM) and Arc GIS 10.4 software. Different procedures were used in the generation of these maps as stated below;  
Steps followed to generate maps
  - To generate a contour map (**Error! Reference source not found.**), navigate to System Toolboxes > Spatial Analyst Tools > Surface > Contour and select input raster, then output feature location and add contour interval value and Z value, generally kept as 1
  - The drainage pattern map (Fig.1) is generated using the flow accumulation layer. The raster calculator under Map Algebra of Spatial Analyst Tools was adopted with a threshold value, then the raster file was converted into polyline to find out stream order, number of streams and stream length
  - Using the drainage pattern map and the Line Density tool, a stream density map (**Error! Reference source not found.**) was generated
  - An aspect map is generated as follows: navigate to System Toolboxes > Select Spatial Analyst Tools > Surface > Aspect and input and output raster locations (Fig. 2)
  - To generate a slope map (Fig. 3), navigate to System Toolboxes > Spatial Analyst Tools > Surface > Slope and select the input raster. Then specify the location of the output raster and select the output measurement. A slope map is created from the DEM layer, then reclassified accordingly
- 2.2.5 Analysis of data: Microsoft Excel and the formulas were used to calculate and analyze different morphometric parameters of a watershed.

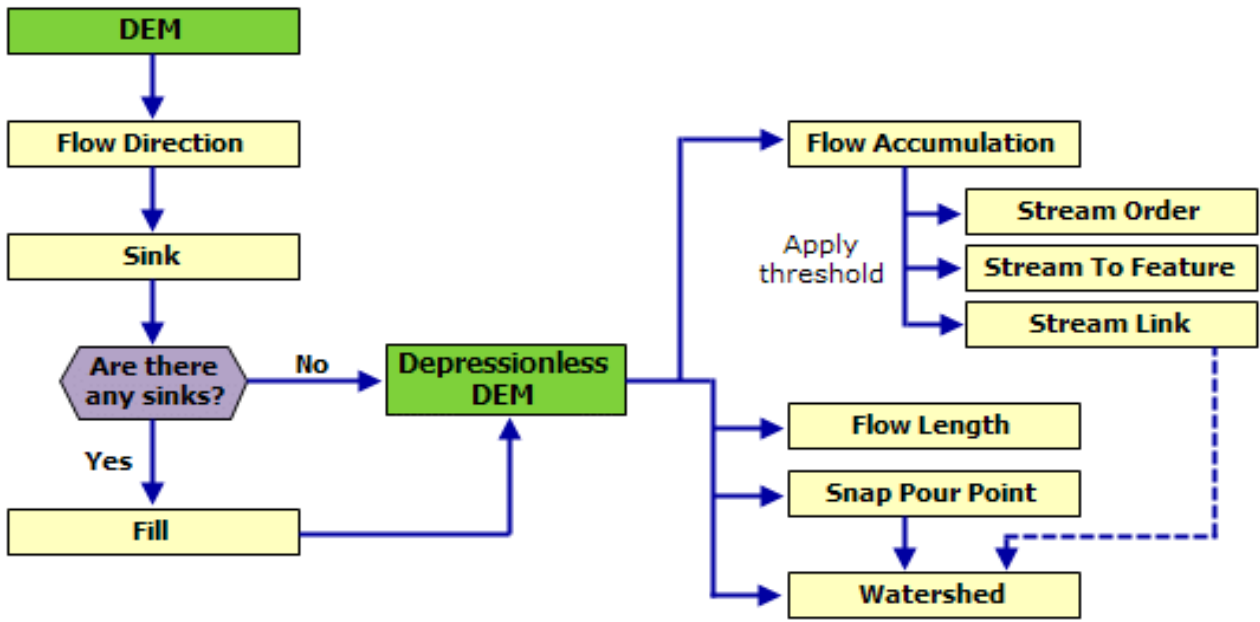
Parameters are discussed according to their dimensional aspects; linear aspects, areal aspects, and relief aspects. The methods of (Horton, 1945), (Strahler, 1964), (Schumm, 1956) are used for linear aspects studies, for areal aspects study using Horton (1945), (Miller, 1953) and (Schumm,

1956) technique, and the technique applies to relief aspects are (Schumm, 1956). All the above listed morphometric parameters ( ).

Table 1. Method of Calculating Morphometric Parameters of Drainage basin

Morphometric Parameters	Formula/Definition and procedure used	References
<b>Linear aspects</b>		
<b>Stream order (U)</b>	Hierarchical order	(Strahler, 1952)
<b>Stream Length (L<sub>u</sub>)</b>	Length of the stream	(Horton, 1945)
<b>Mean stream length (L<sub>sm</sub>)</b>	$L_{sm} = L_u / N_u$ Where, L <sub>u</sub> = Total stream length of a given order (km), N <sub>u</sub> =Number of stream segment.	(Horton, 1945)
<b>Stream length ratio (R<sub>L</sub>)</b>	$R_L = L_u / (L_{u-1})$ Where, L <sub>u</sub> = Total stream length of order (u), L <sub>u-1</sub> =The total stream length of its next lower order.	(Horton, 1945)
<b>Bifurcation Ratio (R<sub>b</sub>)</b>	$R_b = (N_u / N_{u+1})$ Where, N <sub>u</sub> =Number of stream segments present in the given order N <sub>u+1</sub> = Number of segments of the next higher order	(Horton, 1945)
<b>Relief aspects</b>		
<b>Basin relief (B<sub>h</sub>)</b>	Basin relief is the difference in elevation between the highest and lowest point of the basin.	(Schumm, 1956)
<b>Relief Ratio (R<sub>h</sub>)</b>	$R_h = B_h / L_b$ Where, B <sub>h</sub> =Basin relief, L <sub>b</sub> =Basin length	(Schumm, 1956)
<b>Ruggedness Number (R<sub>n</sub>)</b>	$R_n = B_h \times D_d$ Where, B <sub>h</sub> = Basin relief, D <sub>d</sub> =Drainage density	(Schumm, 1956)
<b>Areal aspects</b>		
<b>Drainage density (D<sub>d</sub>)</b>	$D_d = L / A$ Where, L=Total length of stream, A= Area of basin.	(Horton, 1945)
<b>Stream frequency (F<sub>s</sub>)</b>	$F_s = N / A$ Where, N=Total number of stream, A=Area of basin	(Horton, 1945)
<b>Texture ratio (T)</b>	$T = N / P$ Where, N=Total number of streams, P=Perimeter of basin.	(Horton, 1945)
<b>Form factor (R<sub>f</sub>)</b>	$R_f = A / (L_b)^2$ Where, A=Area of basin, L <sub>b</sub> =Basin length	(Horton, 1945)
<b>Circulatory ratio (R<sub>c</sub>)</b>	$R_c = 4\pi A / P^2$ Where A= Area of basin, π =3.14, P= Perimeter of basin.	(Miller, 1953)
<b>Elongation ratio (R<sub>e</sub>)</b>	$R_e = \sqrt{(A/\pi)} / L_b$ Where, A=Area of basin, π=3.14, L <sub>b</sub> =Basin length	(Schumm, 1956)
<b>Length of overland flow (L<sub>g</sub>)</b>	$L_g = 1 / 2D_d$ Where, D <sub>d</sub> = Drainage density	(Horton, 1945)

Source: Schumm (1956), Horton (1945) and Miller (1953).



**Flowchart 1.** Hydrological watershed delineation (Mohd Bukari et al., 2013)

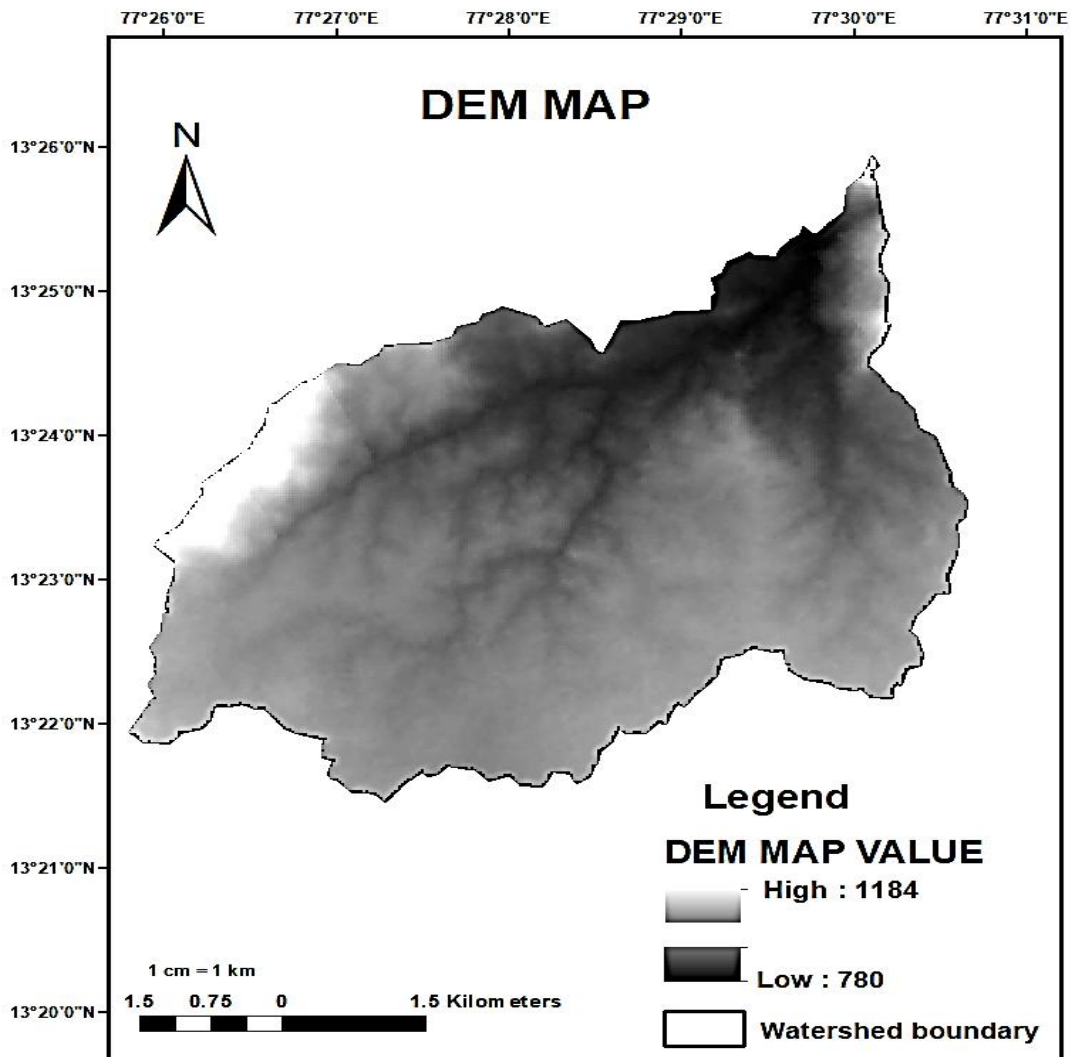


Fig. 2. DEM Map showing elevation values of study area

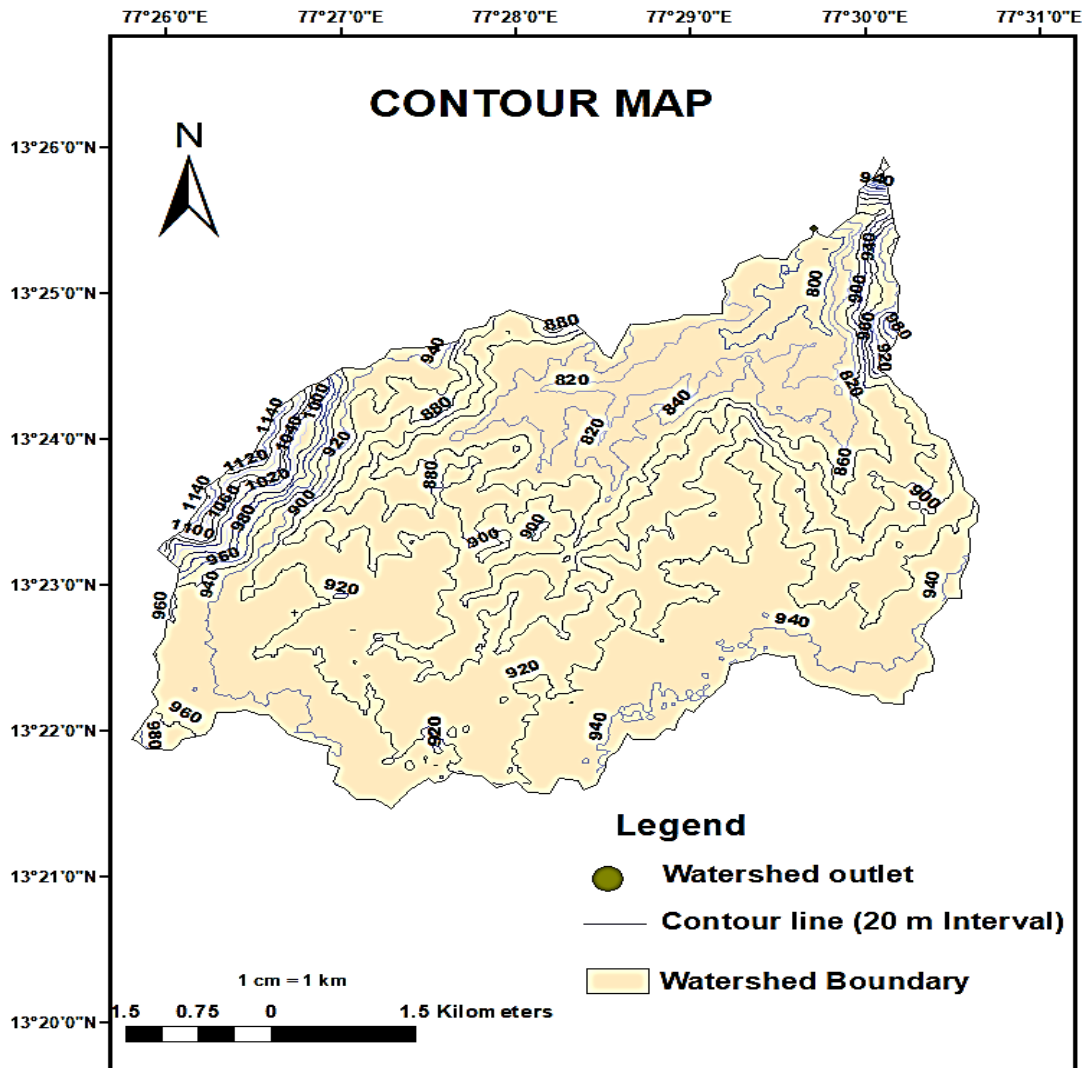


Fig.3. Contour map of chilenahalli micro-watershed

### 3. Result and discussion

Morphometric analysis of Chilenahalli micro-watershed describes the characteristics of the basin based on quantitative evaluation of different parameters.

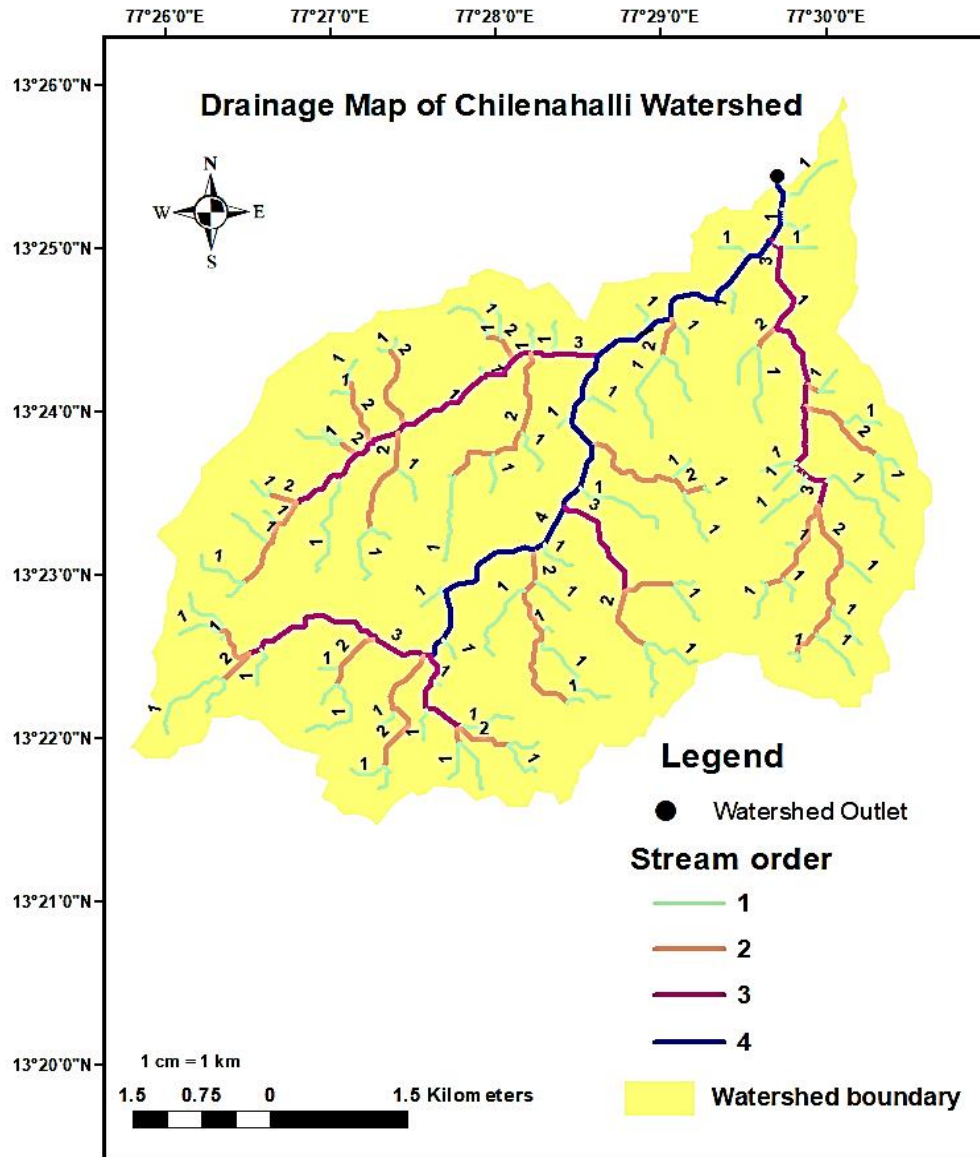
#### 3.1 Linear aspects

##### 3.1.1 Stream order ( $U$ )

In the present study, ranking of streams has been carried out based on the method proposed by (Strahler,1964). The stream order of the Chilenahalli micro-watershed is classified up to the 4<sup>th</sup> order.

The observation shows that the micro-watershed has streams where the 1st, 2nd, 3rd, and 4th are 86, 24, 5, and 1 respectively in numbers (Table 2 and Fig.1). The total number of stream

segments is 166. The drainage patterns of stream network indicate dendritic type that develops where the river channel follows the slope of the terrain.



*Fig.1. Drainage Map*

### 3.1.2 Stream length ( $L_u$ )

The first order stream total length is total 43.26km, second order has a total length of 21.81km, third order has a total length of 12.89 km, fourth order covers a total length of 8.11 km and the total length of all streams covering all these orders is 86.07 km (Table 2). Therefore, it is observed that the first order stream has the highest total stream length and the number of streams because they are distributed more effectively than the other orders. The first order stream having more or less half of the stream length is ephemeral in dry season and rest of the season, the stream is perennial. The perennial length may decrease further upstream and may be shorter in the dry season with decreasing groundwater recharge (Kaliraj et al., 2015). The observation of stream order verifies the Horton's law of stream number i.e. the number of stream segment of each order forms an inverse geometric sequence with order number.

### 3.1.3 Mean Stream Length ( $L_{sm}$ )

The mean stream length of Chilenahalli micro-watershed is 0.50 km for first order, 0.91 km for second order, 2.58 km for third order and 8.11km for fourth order(Table 2). The mean stream length of stream increases with increase of the order.

### 3.1.4 Stream Length Ratio ( $R_L$ )

Stream length ratio is the ratio of the total stream length of the one order to the next lower order of stream segment. The  $R_L$  has an important relationship with the surface flow discharge and erosional stage of the basin (Horton, 1945).The calculated values of the stream length ratio were given in the Table 2. An increasing trend in the stream length ratio from lower order to higher order indicates their mature geomorphic stage (Vinutha and Janardhana, 2014).

Table 2 Results of Linear morphometric parameters

Stream order	Number of stream Nu	Bifurcation ratio	Total length of stream $L_u$ (Km)	Mean stream length (Km)	Stream length ratio ( $R_L$ )	Mean of Bifurcation ratio ( $R_{bm}$ )
1	86	3.58	43.26	0.50	-	4.46
2	24	4.80	21.81	0.91	0.50	
3	5	5.00	12.89	2.58	0.59	
4	1	-	8.11	8.11	0.63	

### 3.1.5 Bifurcation Ratio ( $R_b$ )

The bifurcation ratio is expressed as the ratio of the number of stream segments of a given order U to the number of stream segments of the next higher order (U + 1). The ratio is useful to predict various features of a drainage basin (Horton, 1945).It has importance in drainage basin analysis as it is the principal parameter to associate the hydrological character of a basin with the geological structure and climatic conditions (Kabite and Gessesse, 2018). In our studies, as indicated onTable 2, the Bifurcation Ratio ( $R_b$ ) for streams in Chilenahalli micro-watershed was 3.58, 4.80 and 5.0 for streams with orders of 1, 2 and 3 respectively, while the Mean Bifurcation Ratio ( $R_{bm}$ ) was found to be 4.46, which indicates low rainfall, shallow weathering and low dissection of the valley of the area under investigation. The values of bifurcation ratio less than 5 suggested that the geological structures do not show any dominant influence on the drainage pattern (Arulbalaji and Gurugnanam, 2017).

## 3.2 Areal aspects

### 3.2.1 Drainage Density ( $D_d$ )

It is defined as the total length of streams of all orders per drainage area (Horton, 1932).It is also an important parameter which provides the relationship between the form-attributes of the watershed and the processes occurring along stream course. It reflects the land use and affects infiltration and the basin response time between precipitation and discharge rate of the watershed. It also effect the both concentration and amount of flow. High drainage density implies increase in food peaks, whereas there is reduced food levels in low drainage density (Pallard et al., 2009).

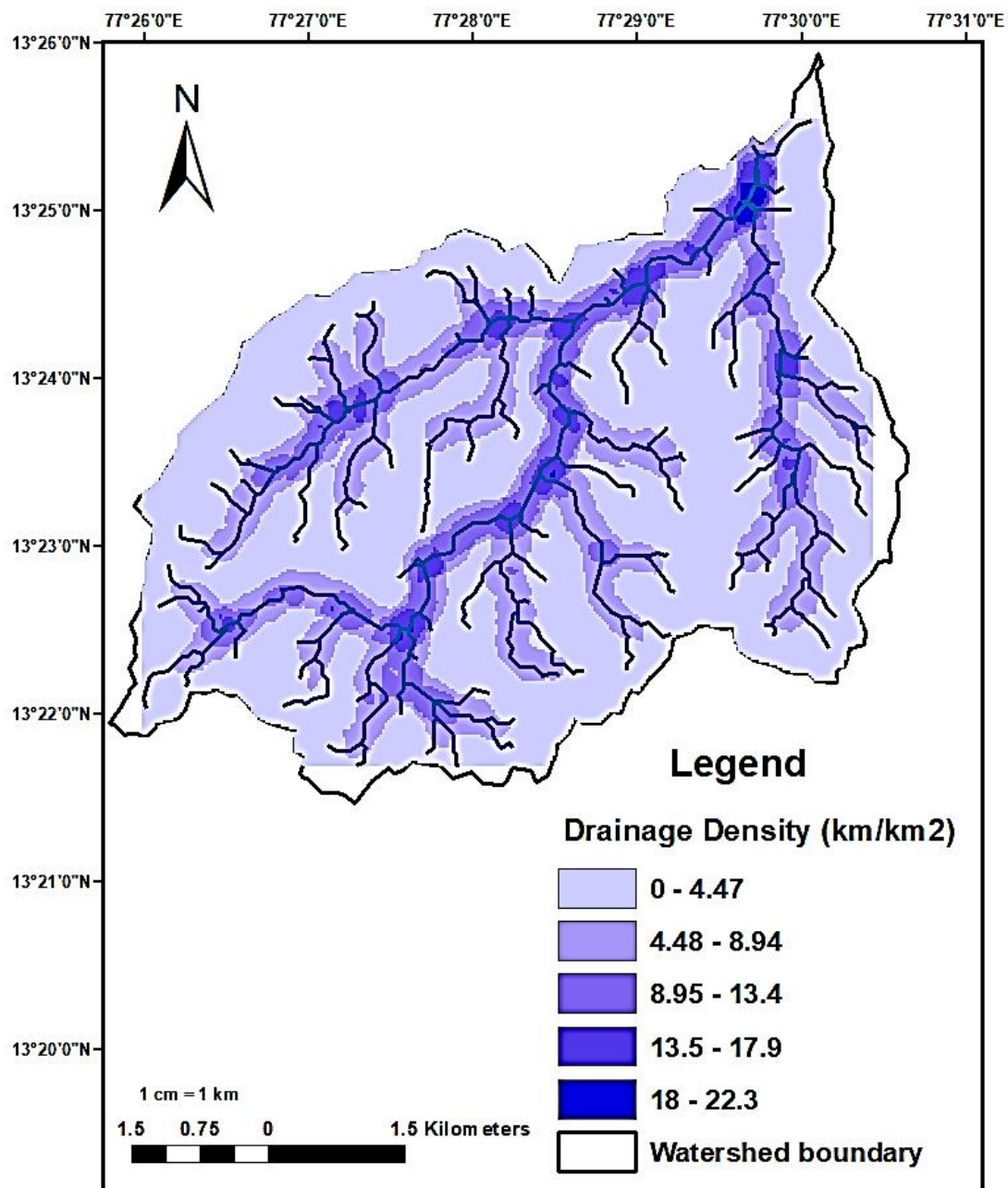
In the study area (**Error! Reference source not found.** and Table 3),  $D_d$  is 2.13 km/km<sup>2</sup> which indicates, low class of  $D_d$  value shows a poorly drained watershed with a slow response to hydrologic parameters or the basin is a highly permeable subsoil and thick vegetative cover (Abboud and Nofal, 2017; Nag and Chakraborty, 2003).

### 3.2.2 Stream frequency ( $F_s$ )

It is the total number of stream segments per unit area of the basin, Horton in 1932 introduced stream frequency. From Table 3, it is observed that the stream frequency of watershed is 2.87 km<sup>-2</sup>. The low  $F_s$  value of watershed indicates low relief feature, for better results the relative values of  $F_s$  should be applied.

### 3.2.3 Texture ratio ( $T$ )

The watershed characteristics such as slope, soil type, climate, rainfall, vegetation, and infiltration capacity were greatly influence the drainage texture ratio (Smith, 1950). It is the ratio total number of stream segments of all orders to perimeter of that area. The texture ratio of the micro-watershed is 3.52, which indicated coarse texture of drainage basin (Smith, 1950)



**Fig. 5.** Line drainage density map of chilengahalli micro-watershed

#### 3.2.4 Form Factor ( $R_f$ )

According to (Horton, 1932), the form factor is the ratio of the area of the basin to the square of the basin length. This parameter has been widely used in building correlations with maximum flood-discharge formulas. The form factor value is small for the elongated shape, the runoff duration will be long with low runoff volume, and the contrarily rounded-shape watershed with a high value of form factor experiences a short time of concentration with high runoff volume, and it is highly sensitive to flooding. The value of the form factor should not be more than 0.7854.(Waikar and Nilawar, 2014).The form factor ratio value for this study area is 0.55, which has a medium range value of form factor. Therefore, the basin is slightly elongated in shape with low peak flow and longer duration of flow (Table 3)

#### 3.2.5 Circulatory ratio ( $R_c$ )

Circularity ratio is defined as the ratio of watershed area to the area of a circle having the same perimeter as the watershed. It indicates shape of the basin and increase in the  $R_c$  value indicates increase in the food level and susceptibility to food hazards at the outlet of the basin (Miller, 1953).In the present study, the  $R_c$  values of micro-watershed was less than 0.5 (from Table 3,0.47) indicating the characteristics of an slightly elongated basin.

#### 3.2.6 Elongation ratio ( $R_e$ )

Elongation ratio is defined as the ratio between the diameter of the circle of the same area as the drainage basin and the maximum length of the basin (Schumm, 1956).The elongation ratio values indicate that the areas with higher elongation ratio values have high infiltration capacity and low runoff, and that a circular basin is more efficient in the discharge of runoff than an elongated basin (Singh and Singh, 1997). The  $R_e$  value of the study area is 0.84 (Table 3). The value is close to 1.0, which implies that it is typical of regions of very low relief and indicates that there are fewer geomorphological controls on stream networks(Magesh et al., 2013; Strahler, 1952). On the basis of the elongation ratio value, the watershed is oval in shape but it is less elongated with reference to the  $R_f$  value.

#### 3.2.7 Length of overland flow ( $L_g$ )

Length of overland flow is one of the important parameter of a watershed area which affects the physiographic development and hydrologic characteristics of watershed. This concept is similar to surface run-off, but these two are quite different hydrological phenomenon(Karim, 2020).The length of overland flow is calculated as half of the reciprocal of the drainage density, and infiltration (exfiltration) and percolation through the soil affect the value  $L_g$ (Schmid, 1997)also.The value for the length of overland flow in this study is 0.23 km which is moderate.

### 3.3 Relief aspects

#### 3.3.1 Basin relief ( $B_h$ )

Basin relief ( $B_h$ ) is defined as the difference in elevation between the highest and the lowest points of the basin (Schumm, 1956). The basin relief controls the stream gradient and it influences the flow patterns, amount of the sediment transported and geomorphic processes and landform characteristic of the catchment area (Burrough et al., 2015).In the study, basin relief is obtained as 400 m with the maximum height of the whole basin is 1180 m and the lowest is 720 m. The contour map (**Error! Reference source not found.**) shows contour lines of study area with 20 m contour interval, it is used to study topographic features of drainage basin.

### 3.3.2 Relief ratio ( $R_h$ )

The relief ratio is defined as the ratio between the total relief of a basin and the basin length of the drainage basin (Schumm, 1956). The  $R_h$  is inversely varies with drainage area and size of watersheds of a given drainage basin (Gottschalk, 1964). The value of the relief ratio indicate steep slope and high relief and vice-versa and is an indicator of the intensity of erosion process operating on slope of the basin (Schumm, 1956). The value of relief ratio in micro-watershed is 0.05 indicating moderate relief and moderate slope (Table 3).

### 3.3.3 Ruggedness number ( $R_n$ )

The ruggedness number as the product of maximum basin relief and drainage. An extreme high value of ruggedness number occurs when both variables are large and slope is steep (Schumm, 1956).  $R_n$  values indicate the level of smoothness and roughness of the watershed or surface unevenness (Selvan et al., 2011) and level of soil erosion level in the watershed (Debelo et al., 2017). The ruggedness value watershed is 0.85 (Table 3), which shows the terrain of the basin is moderately rugged. A study by (Kumar and Joshi, 2015) on watershed got  $R_n$  value 0.78 and interpreted as the area has steep slope and susceptible for soil erosion. If the watershed is more rugged, high sediment transport will take place, thereby exposing it to soil erosion.

Table 3 Result of morphometric analysis

SL No	Parameter	Value
1	Basin Area ( $\text{Km}^2$ )	40.42
2	Perimeter (km)	32.92
3	Basin order	4
4	Drainage density ( $D_d$ ) ( $\text{Km}/\text{Km}^2$ )	2.13
5	Stream frequency ( $F_s$ ) ( $\text{Km}^2$ )	2.87
6	Relief Ratio ( $R_h$ )	0.05
7	Texture ratio (T) (Km)	3.52
8	Basin Length ( $L_b$ ) (Km)	8.59
9	Basin Relief ( $B_n$ ) (m)	400
10	Ruggedness number ( $R_n$ )	0.85
11	Mean Bifurcation ratio ( $R_b$ )	4.46
12	Form Factor ( $R_f$ )	0.55
13	Circulatory ratio ( $R_c$ )	0.47
14	Elongation Ratio ( $R_e$ )	0.84
15	Length of overland flow ( $L_g$ ) (Km)	0.23

Source: The parameters obtained from Gis software and Excel

### 3.4 Aspect Map

The aspect map is usually related to the direction of the slope face. It is an important parameter to know the impact of the sun shine on the site of the neighborhood time. Aspect map has an important effects in the distribution of the vegetation form in an area (Maathuis and Wang, 2006). The aspect map derived from SRTM-DEM represents the compass route,  $0^{\circ}$  is north with time;  $360^{\circ}$  issue to the south (Fig. 2. Aspect MapFig. 2). The Chilenahalli micro-watershed offers north-west facing slopes and thus these slopes have a higher moisture content and higher vegetation than in the other slope.

### 3.5 Slope Map

The slope is a measure of changes in surface values at a distance and can be expressed in a percentage. The SRTM-DEM, which is in raster format in the form of grids, represents unique pixel values with common reference. After calculating the slope the maximum difference can be determined, and then the slope values will be reclassified accordingly (Jha et al., 2007; Kudnar and Rajasekhar, 2020).The study area map is grouped into five classes, namely 0-5 (Gently sloping), 5–10 (Sloping), 10–15 (strongly sloping), 15 – 20 (moderately steep) and >20 (Steep)It was observed that a large part of the study area was under gentle slopes and slight slopes, suggesting nearly flat topography of the region. Some parts along the drainage boundary in the north and north-western regions show steep slopes (Fig. 3).

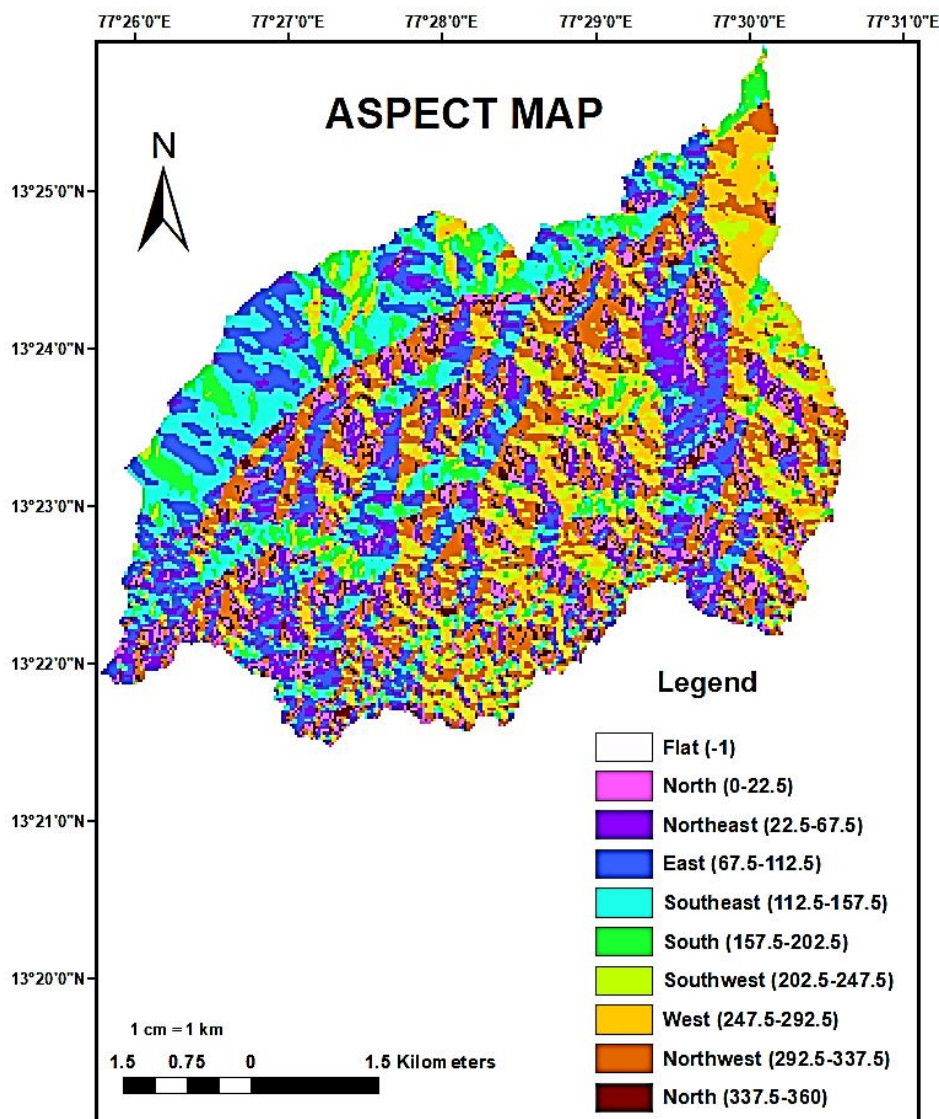


Fig. 2. Aspect Map of chilenahalli micro-watershed.

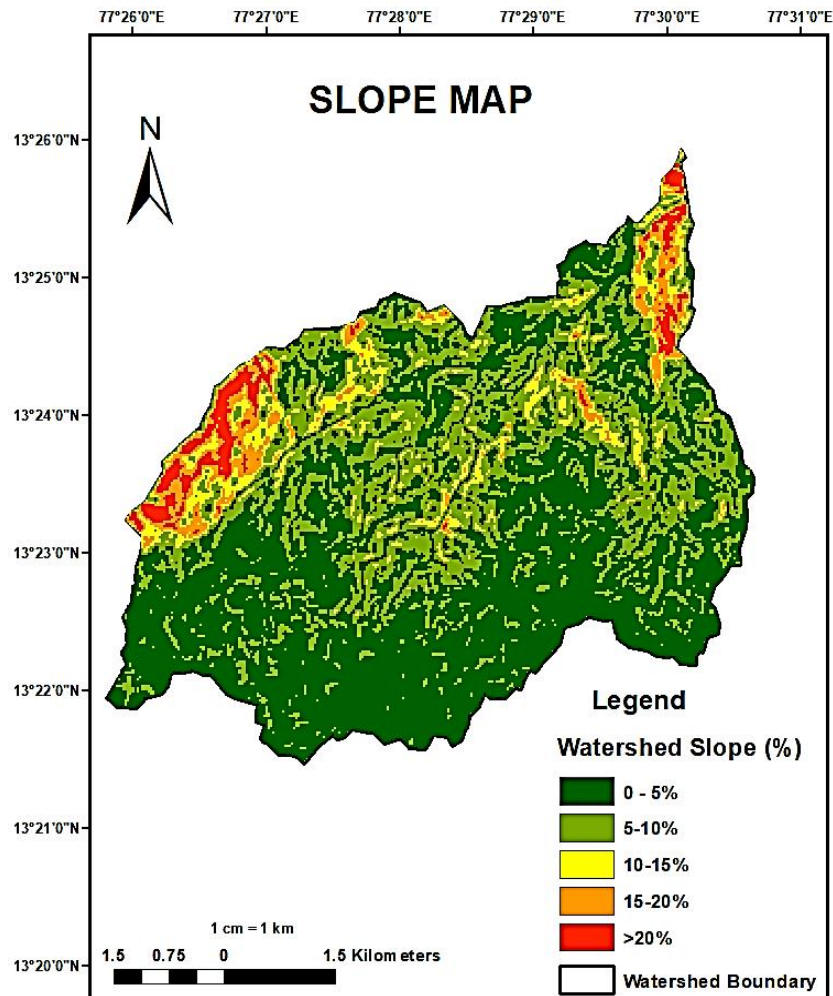


Fig. 3. Slope Map of chilenahalli micro-watershed.

#### 4. Conclusion

The morphometric analysis of the Chilenahalli micro-watershed was carried out using GIS and remote sensing techniques. The measurement of linear, areal, and relief aspects was based on different formulas and the aspect, contour and slope maps were prepared to study topographic features. The study, reveals that Chilenahalli micro-watershed designated as 4<sup>th</sup> order stream and drainage indicate dendritic pattern with mature geomorphic stage and stream order verifies the Horton's law of stream number. The Mean Bifurcation Ratio ( $R_{bm}$ ) was found to be 4.46, which indicates low rainfall, shallow weathering and low dissection of the valley of the area under investigation and the relief aspect shows low to medium relief of the basin. This can be visualised using DEM, relief ratio, ruggedness number, and slope maps of the study area. The drainage density was found to be 2.13 km/km<sup>2</sup>, which indicates a low class  $D_d$  value, thereby indicating a poorly drained watershed with low response to hydrological parameters. The texture ratio of the micro-watershed is 3.52, which indicated coarse texture of drainage basin and the values of Form Factor ( $R_f$ ), Circulatory ratio ( $R_c$ ) and Elongation ratio ( $R_e$ ) ratio imply an oval shape of the basin with a slightly elongated main stream. The value for the length of overland flow in this study is 0.23 km which is moderate and shows moderate infiltration and percolation characteristics of soil.

The study of morphometric properties of Chilenahalli micro-watershed help in future watershed management and hazard management studies. This study established relationships between morphometry, sub-surface geology and hydrological characteristics of the watershed and

provide knowledge and database for strategic planning, prioritization and management of watershed.

## References

- Abboud, I. A., and Nofal, R. A. (2017). Morphometric analysis of wadi Khumal basin, western coast of Saudi Arabia, using remote sensing and GIS techniques. *Journal of African Earth Sciences*, 126, 58–74.
- Arulbalaji, P., and Gurugnanam, B. (2017). Geospatial tool-based morphometric analysis using SRTM data in Sarabanga watershed, Cauvery River, Salem district, Tamil Nadu, India. *Applied Water Science*, 7(7), 3875–3883.
- Bogale, A. (2021). Morphometric analysis of a drainage basin using geographical information system in Gilgel Abay watershed, Lake Tana Basin, upper Blue Nile Basin, Ethiopia. *Applied Water Science*, 11(7), 1–7.
- Burrough, P. A., McDonnell, R. A., and Lloyd, C. D. (2015). *Principles of geographical information systems*. Oxford university press.
- Chandrashekar H, Lokesh K V, Sameena M, R. J. and R. G. (2015). *Int. Conf. on Water Resources, Coastal and Ocean Engineering (Mangalore). vol 4 ed(G S Dwarakish (Elsevier Procedia))*, 1345 – 1353.
- Clarke, J. I. (1996). *Morphometry from maps. Essays in geomorphology*. Elsevier, New York.
- Debelo, G., Tadele, K., and Koriche, S. A. (2017). Morphometric analysis to identify erosion Prone areas on the upper blue Nile using Gis (Case Study of Didessa and Jema Sub-Basin, Ethiopia). *International Research Journal of Engineering and Technology*, 4(8), 1773–1784.
- Gottschalk, L. C. (1964). Reservoir sedimentation. *Handbook of Applied Hydrology*. McGraw Hill Book Company, New York, Section, 7.
- Horton, R. E. (1932). Drainage-basin characteristics. *Transactions, American Geophysical Union*, 13(1), 350–361.
- Horton, R. E. (1945). Erosional development of streams and their drainage basins; hydrophysical approach to quantitative morphology. *Geological Society of America Bulletin*, 56(3), 275–370.
- Jha, M. K., Chowdhury, A., Chowdary, V. M., and Peiffer, S. (2007). Groundwater management and development by integrated remote sensing and geographic information systems: prospects and constraints. *Water Resources Management*, 21(2), 427–467.
- Kabite, G., and Gessesse, B. (2018). Hydro-geomorphological characterization of Dhidhessa River basin, Ethiopia. *International Soil and Water Conservation Research*, 6(2), 175–183.
- Kaliraj, S., Chandrasekar, N., and Magesh, N. S. (2015). Morphometric analysis of the River Thamirabarani sub-basin in Kanyakumari District, South west coast of Tamil Nadu, India, using remote sensing and GIS. *Environmental Earth Sciences*, 73(11), 7375–7401.
- Karim, S. (2020). *Methods of Morphometric Analysis of Drainage Basin: An Overview*.
- Koti, R. R. (2019). KARNATAKA STATE ENVIS NEWSLETTER BENGALURU RURAL. *Parisara*, 53, 2–3.
- Kudnar, N. S., and Rajasekhar, M. (2020). *A study of the morphometric analysis and cycle of erosion in Waingang Basin, India. Model Earth Syst Environ* 6: 311--327.
- Kumar, P., and Joshi, V. (2015). Characterization of hydro geological behavior of the upper watershed of River Subarnarekha through Morphometric analysis using Remote Sensing and GIS approach. *International Journal of Environmental Sciences*, 6(4), 429–447.
- Magesh, N. S., Jitheshlal, K. V, Chandrasekar, N., and Jini, K. V. (2013). Geographical information system-based morphometric analysis of Bharathapuzha river basin, Kerala, India. *Applied Water Science*, 3(2), 467 – 477.
- Miller, V. C. (1953). *A QUANTITATIVE GEOMORPHIC STUDY OF DRAINAGE BASIN CHARACTERISTICS IN THE CLINCH MOUNTAIN AREA VIRGINIA AND TENNESSEE*.
- Mohd Bukari, S., Tan, L. W., and A. A., M. (2013). GIS Application in Sub Catchment Area Delineation at Batu Pahat District. *Proceeding of the World Conference on Integration of*

*Knowledge, WCIK.*

- Nag, S. K., and Chakraborty, S. (2003). Influence of rock types and structures in the development of drainage network in hard rock area. *Journal of the Indian Society of Remote Sensing*, 31(1), 25–35.
- Pallard, B., Castellarin, A., and Montanari, A. (2009). A look at the links between drainage density and flood statistics. *Hydrology and Earth System Sciences*, 13(7), 1019–1029.
- Schmid, B. H. (1997). Critical rainfall duration for overland flow from an infiltrating plane surface. *Journal of Hydrology*, 193(1–4), 45–60.
- Schumm, S. A. (1956). Evolution of drainage systems and slopes in badlands at Perth Amboy, New Jersey. *Geological Society of America Bulletin*, 67(5), 597–646.
- Selvan, M. T., Ahmad, S., and Rashid, S. M. (2011). Analysis of the geomorphometric parameters in high altitude glacierised terrain using SRTM DEM data in Central Himalaya, India. *ARPJN Journal of Science and Technology*, 1(1), 22–27.
- Smith, K. G. (1950). Standards for grading texture of erosional topography. *American Journal of Science*, 248(9), 655–668.
- Strahler, A. N. (1952). Hypsometric (area-altitude) analysis of erosional topography. *Geological Society of America Bulletin*, 63(11), 1117–1142.
- Strahler, A. N. (1964). Part II. Quantitative geomorphology of drainage basins and channel networks. *Handbook of Applied Hydrology: McGraw-Hill, New York*, 4–39.
- Sukristiyanti, S., Maria, R., and Lestiana, H. (2018). Watershed-based morphometric analysis: a review. *IOP Conference Series: Earth and Environmental Science*, 118(1), 12028.
- Vinutha, D. N., and Janardhana, M. R. (2014). Morphometry of The payaswini watershed, coorg district, karnataka, India, using remote sensing and GIS techniques. *International Journal of Innovative Research in Science, Engineering and Technology*, 3(5), 516–524.
- Waikar, M. L., and Nilawar, A. P. (2014). Morphometric analysis of a drainage basin using geographical information system: a case study. *Int J Multidiscip Curr Res*, 2(2), 179–184.
- [http://cgwb.gov.in/District\\_Profile/karnataka/BANGALORE\\_RURAL](http://cgwb.gov.in/District_Profile/karnataka/BANGALORE_RURAL) (Ground water information booklet Bangalore rural district, Karnataka)
- <https://censusindia.gov.in/nada/index.php/catalog/6901> (Census digital Library, Ministry of Home affairs, Government of India)