

1 **Induction of embryogenic callus in cashew**
2 **(*Anacardium occidentale* L.) by cotyledon, nucellus**
3 **and testa with antioxidants effect**

4
5 **Bénédicte S.A. Akakpo^{1*}, Jerome Anani Houngue¹, Bienvenu T. Badou¹,**
6 **Serge S. Houédjissin¹, Gilles Habib Todjro Cacaï¹, Joseph Dossou³ and**
7 **Corneille Ahanhanzo^{1,2}**

8
9 1. *Central Laboratory of Plant Biotechnology and Plant Breeding, Faculty of Science*
10 *and Technique; University of Abomey-Calavi (UAC), Bénin.*

11 2. *Beninese Center of Scientific Research and Technique*

12 3. *Laboratory of Bioengineering of Food Processes; Faculty of Agronomic*
13 *Sciences; University of Abomey-Calavi (UAC), Benin.*

14
15
16
17
18 **ABSTRACT**
19

Aims: This work aims to evaluate the influence of different growth regulators combined with antioxidants on the induction of callus with different explants in cashew.

Materials and Methods: Nucellar tissues, cotyledons and testa from elite tree nuts are cultured on media that differ in their concentration of 6-Benzylaminopurine (BAP: 0 mg/l; 0.25 mg/l; 0.5 mg/l) and Acid 2,4 dichlorophenoxyacetic (2,4-D: 0 mg/l; 0.8 mg/l). Therefore, for the control of the browning of the explants, the effect of activated charcoal and polyvinylpyrrolidone was tested. The amount of callus formed is evaluated after 28 days and after 90 days by simple observation according to a given scale.

Results: Analysis of variance of callus formation 28 days after the culture of explants shows that the interaction between growth regulators and antioxidants significantly influences ($p < 0.05$) the induction of callus. The combination BAP 0.25mg/l and 2,4-D 0.8mg/l produces on average more callus (0.47 ± 0.00). There is a very significant difference ($P < 0.05$ to $p < 0.001$) in the effect of growth regulators and antioxidants on obtaining callus after 90 days of cultivation. The 0.25 mg/l combination of BAP and 0.8 mg/l of 2,4-D still appears to be the best combination of growth regulators for callus with 58% of callus formed. Cotyledons in the presence of PVP respond better than activated charcoal. The nucellus are the explants that respond better in the presence of activated charcoal. The test for Least Significant Difference reveals that PVP significantly promotes ($p < 0.05$) the production of a large number of calli (77%) unlike activated charcoal (9%) after 90 days of culture.

Conclusion: Summary, for obtaining viable and embryogenic callus in cashew, the combination of BAP at 0.25 mg/L and 0.8 mg/L of 2,4-D is the best and this in the presence of PVP with cotyledons.

20
21 *Keywords: Anacardium occidentale, callus, 6-Benzylaminopurine, antioxidant, embryogenesis*
22
23
24

1. INTRODUCTION

Anacardium occidentale L. is an agriculturally important crop in several tropical regions such as Asia, Africa, India and Latin America. The cashew is highly valued for its edible nuts and shell. Conventional plant breeders and biotechnology programmes to improve productivity are giving it great interest. The growing demand for cashew kernels has led to an increase in the cultivation of this plant. However, current propagation methods have become a limiting factor in the supply of adequate planting material [1]. Conventional methods of vegetative propagation, namely layering, grafting or cutting, are not fast to meet the needs of elite varieties in a timely manner. The technology for commercial-scale propagation of plants is mainly based on micropropagation. Micropropagation, especially somatic embryogenesis protocols, aims at rapid multiplication of seedlings true to the parent material [2]. Although the successes of somatic embryogenesis have been documented for some highly productive forest and fruit species, there are still barriers to the implementation of somatic embryogenesis on an operational scale in forestry and agroforestry [3]. Among other constraints to cashew micropropagation, explant browning and the type of growth regulator are the main factors to be controlled in the induction of somatic embryogenesis [4]. In *in vitro* culture, cashew, like other Anacardiaceae, is very recalcitrant and only limited success has been achieved [4,5]. Several studies have shown in cashew and mango that 2,4-D is the essential component of the induction phase of somatic embryogenesis in several species. However, the prolonged presence of 2,4-D in the induction medium inhibits the growth of somatic embryos beyond the globular stage [6,7]. Recent studies in mango [8], a species of the same family as cashew, have shown that improved embryo production is observed when the concentration of nitrogen in the medium, especially ammonium salts, is low and 2,4-D is replaced by BAP at low concentration (0.25 mg/l). Furthermore, cashew is rich in phenolic compounds. Mantell et al [5] report that secondary metabolites are released in the phloem vessels of all cashew organs. Indeed, the wounds caused during the cutting of explants favour the oxidation of these phenolic compounds, whose exudation leads to the browning and then the necrosis of the calli. Thus, a low rate of calli is obtained at the end of the induction. Establishing an effective protocol to control browning is therefore a challenge. Cultivation of explants with antioxidants such as 0.3% Polyvinylpyrrolidone (PVP) [9] combined with frequent subculturing and dark incubation [10], addition of activated charcoal to the basal medium [11], minimize the effect of phenolic exudations and consequently, explant necrosis. Thus, the aim of this work is to evaluate the effect of BAP and 2,4-D in combination with PVP or activated charcoal in the formation of pro-embryogenic calli in order to obtain somatic embryos capable of germinating and regenerating the whole plant of *Anacardium occidentale* *in vitro*.

2. MATERIALS AND METHODS

2.1. Materials

Immature seeds (2-3 weeks after fertilization) collected on selected cashew trees from the municipality of Bassila retained by previous studies were surface sterilized for 5 min in 70% (v/v) ethanol, followed by 50% sodium hypochlorite (4% active chlorine) solution with a few drops of Tween-20 for 30 minutes; and then rinsed three times in sterile distilled water. Ovules were removed from cashew nut under sterile conditions and bisected longitudinally [12]. The nuts were cut open under sterile conditions in a laminar hood, the ovules were dissected out, cut in half. The immature seed was taken out using sterile forceps and to allow removal of the embryo and nucellus. Thick and fleshy seed coat explants, nucelli and cotyledon were cultured on Modified Gamborg's B5 major salts, MS minor salts, iron source and organics with varying hormone concentrations [8]. The explants were placed on the various media with either their convex (dorsal) or concave (ventral, cut end) side in contact.

2.2. Methods

The medium supplemented with 6% sucrose, 400 mg/L L-glutamine, 500 mg/L casein hydrolysate, 80 mg/l adenine sulphate and, with 0.8 mg/L 2,4-dichlorophenoxy-acetic acid (2,4-D) alone, or in combination with BAP at 0.25 mg/l or 0.5 mg/l (Table 1) giving five treatments in all 2.5 g/l of activated charcoal or PVP. For callus induction, 10–15 explants were used per treatment (explant x media), with three replicates in a randomized block design. All the experiments were repeated twice.

Cultures were incubated in the dark at $25^{\circ} \pm 1^{\circ}\text{C}$ for 12 weeks, and callus formation was observed each week. After 28 and 90 days, the number of explants showing callus and pro-embryonic calli (PEC) commencement, as well as the number of days required for callus and PEC development, were recorded.

Table 1 : Media compositions for the induction of calli from the various types of explants

Media	BAP (mg/l)	2,4-D (mg/l)	PVP (g/l)	Activated charcoal (g/l)
C0P	0	0.8	2.5	0
C1P	0.25	0	2.5	0
C2P	0.5	0	2.5	0
C3P	0.25	0.8	2.5	0
C4P	0.5	0.8	2.5	0
C0ch	0	0.8	0	2.5
C1ch	0.25	0	0	2.5
C2ch	0.5	0	0	2.5
C3ch	0.25	0.8	0	2.5
C4ch	0.5	0.8	0	2.5

80 The amount of callus is evaluated using the scale: no callus = 0 cal; slight callus = 1mm cal; moderate callus = 2 to 5mm;
81 profuse callus = 5 to 8mm; highly profuse callus = 8 to 10mm) is noted after 4 weeks and after 90 days by simple
82 observation.

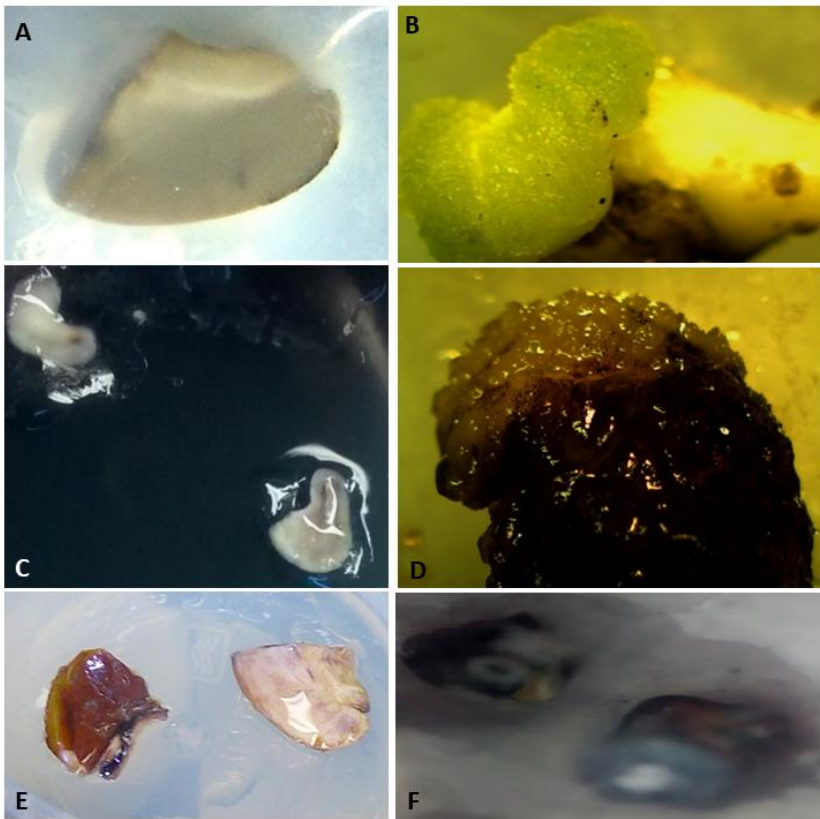
83 2.3. Statistical analysis

84 The data collected after 28 and 90 days were entered and processed with the Excel spreadsheet. These data were then
85 subjected to a two and three-way analysis of variance (ANOVA) using the PROC GLM procedure of the Statistical
86 Analysis System (SAS) software version 9.2. Data for the amounts of calli after four weeks were subjected to a three-way
87 ANOVA (growth regulators, antioxidants and explants) while the data taken after 90 days were subjected to a two-way
88 ANOVA (growth regulators and antioxidant). Multiple means comparisons were made with the test for the least significant
89 difference (LSD) at the 5% level [13].
90

91 3. RESULTS

92 3.1. Morphological Response

93 Morphological changes such as swelling, color change were noticed from the first week of culture. Regardless of the
94 treatment, 98% of the explants showed morphological responses. After the first week of culture, the cotyledons turned
95 green and tripled or even quadrupled in size after three weeks of culture. The explants reacted differently and depending
96 on the composition of the medium. In the cotyledons, calli were observed on the edge and on the outer side. In the
97 nucellus, calli were observed on the surface above the medium. The testa gave some calli and this on the outer layer. The
98 testa (Fig. E) rapidly turned brown and necrotic (Fig. F). The cotyledons and the nucellus were the best explants to obtain
99 the callus. The nucellar callus was brown (Fig. D), while the cotyledonary callus was snow white, translucent, white
100 crystals or green (Fig. B).
101



A: Cotyledon explant; B: Calli from Cotyledon; C: Nucellar explant; D: Calli from Nucellar; E: Testa explant; F: Necrosis of testa explant

Figure: 1 Morphological response of different explants on the medium

3.2. Callus formation

The three-factor analysis of variance considering media, antioxidants and explants on callus formation after four weeks of cultivation revealed (Table 2) that there was no significant difference ($p > 0.05$) between plant growth regulators and antioxidants with respect to callus formation. However, the interaction between hormone composition and antioxidants significantly ($p < 0.05$) influenced callus induction. Table 3 shows the results of the smallest significant difference test. From this table it can be seen that the testa did not significantly ($p > 0.05$) induce callus formation compared to the nucellus and cotyledon, which did induce callus and even of medium size. Activated charcoal appeared to be the antioxidant that significantly ($p < 0.05$) promoted callus formation in the medium with only 2,4-D at 0.8 mg/l (C0) and the medium with BAP at 0.25 mg/l and no 2,4-D (C1). The medium (C1) was less favourable for callus formation. However, media C0 where BAP was zero (0mg/l) and 2,4-D 0.8mg/l; then C3 where BAP was low (0.25mg/l) and 2,4-D 0.8mg/l produced significantly ($p < 0.05$) more callus (0.47 ± 0.00 on average) according to the Least Significant Difference test. In general, C0, C4 and C3 media were the best for obtaining average callus with 46%, 37% and 23% average callus respectively. It was also noted that activated carbon gave more callus on media C0 and C1. In general, it was found that media C0 where BAP was zero (0mg/l) and 2,4-D 0.8mg/l; then C3 where BAP was low (0.25mg/l) and 2,4-D 0.8mg/l produced more callus (0.47 ± 0.00 on average).

121
122
123
124

Table 2. F-values and level of significance from three-way Analysis of Variance (ANOVA) of callus formation regarding plant growth regulators (PGR), antioxidant and explant after 28 days

Source of variation	Degree of freedom	F-values				
		Callus formation after 28 days				
		No callus	slight callus	moderate callus	Profuse callus	Highly profuse callus
PGR	4	0.85 ^{ns}	0.69 ^{ns}	1.03 ^{ns}	2.58 ^{ns}	0.12 ^{ns}
Antioxidants	1	0.09 ^{ns}	0.55 ^{ns}	0.05 ^{ns}	0.90 ^{ns}	0.20 ^{ns}
Explants	2	3.06 ^{ns}	0.64 ^{ns}	1.83 ^{ns}	1.7 ^{ns}	0.28 ^{ns}
PGR * Antioxidants	4	3.63*	0.73 ^{ns}	3.11*	0.72 ^{ns}	0.12 ^{ns}
PGR * Explants	8	0.64 ^{ns}	0.70 ^{ns}	0.63 ^{ns}	1.8 ^{ns}	0.11 ^{ns}
Antioxidants * Explants	2	0.50 ^{ns}	0.72 ^{ns}	0.34 ^{ns}	0.62 ^{ns}	0.28 ^{ns}
PGR* Antioxidants*Explants	8	2.04 ^{ns}	0.77 ^{ns}	1.06 ^{ns}	1.04 ^{ns}	0.13 ^{ns}

ns: $P > 0.05$ *: $P < 0.05$

125
126
127
128
129
130
131
132
133
134
135
136
137
138
139
140
141
142
143
144
145
146
147
148
149
150
151
152
153
154
155

Media	Antioxidants	Explants	Callus formation					
			No callus	slight callus	moderate callus	Profuse callus	highly profuse callus	
BAP 0mg/l and 2,4-D 0,8mg/l (C0)	Activated charcoal	Nucellus	0,00±0,00 b	0,00±0,00 a	1,00±0,00 a	0,00±0,00 a	0,00±0,00 a	
		Testa	1,00±0,00 a	0,00±0,00 a	0,00±0,00 b	0,00±0,00 a	0,00±0,00 a	
		Cotyledon	0,00±0,00 b	0,00±0,00 a	1,00±0,00 a	0,00±0,00 a	0,00±0,00 a	
		Mean	0,20±0,20 B	0,00±0,00 A	0,80±0,20 A	0,00±0,00 A	0,00±0,00 A	
	PVP	Nucellus	1,00±0,00 a	0,00±0,00 a	0,00±0,00 a	0,00±0,00 a	0,00±0,00 a	
		Testa	1,00±0,00 a	0,00±0,00 a	0,00±0,00 a	0,00±0,00 a	0,00±0,00 a	
		Cotyledon	0,50±0,28 a	0,00±0,00 a	0,50±0,28 a	0,00±0,00 a	0,00±0,00 a	
		Mean	0,750±0,16 A	0,00±0,00 A	0,25±0,16 B	0,00±0,00 A	0,00±0,00 A	
	Mean		0,53±0,00 Y	0,00±0,00 X	0,46±0,00 X	0,00±0,00 X	0,00±0,00 X	
	BAP 0,25 mg/l and 2,4-D 0mg/l (C1)	Activated charcoal	Nucellus	1,00±0,00 a	0,00±0,00 a	0,00±0,00 a	0,00±0,00 a	0,00±0,00 a
			Testa	1,00±0,00 a	0,00±0,00 a	0,00±0,00 a	0,00±0,00 a	0,00±0,00 a
			Cotyledon	0,00±0,00 a	0,00±0,00 a	1,00±0,00 a	0,00±0,00 a	0,00±0,00 a
			Mean	0,66±0,33 B	0,00±0,00 A	0,33±0,33 A	0,00±0,00 A	0,00±0,00 A
PVP		Nucellus	1,00±0,00 a	0,00±0,00 a	0,00±0,00 a	0,00±0,00 a	0,00±0,00 a	
		Testa	1,00±0,00 a	0,00±0,00 a	0,00±0,00 a	0,00±0,00 a	0,00±0,00 a	
		Cotyledon	1,00±0,00 a	0,00±0,00 a	0,00±0,00 a	0,00±0,00 a	0,00±0,00 a	
		Mean	1,00±0,00 A	0,00±0,00 A	0,00±0,00 B	0,00±0,00 A	0,00±0,00 A	
Mean			0,90±0,00 X	0,00±0,00 X	0,10±0,00 Y	0,00±0,00 X	0,00±0,00 X	
BAP 0,5mg/l		Activated	Nucellus	1,00±0,00 a	0,00±0,00	0,00±0,00 a	0,00±0,00 a	0,00±0,00 a

and 2,4-D 0mg/l (C2)	charcoal			a			
		Testa	1,00±0,00 a	0,00±0,00 a	0,00±0,00 a	0,00±0,00 a	0,00±0,00 a
		Cotyledon	1,00±0,00 a	0,00±0,00 a	0,00±0,00 a	0,00±0,00 a	0,00±0,00 a
		Mean	1,00±0,00 A	0,00±0,00 A	0,00±0,00 A	0,00±0,00 A	0,00±0,00 A
	PVP	Nucellus	0,50±0,50 a	0,00±0,00 a	0,50±0,50 a	0,00±0,00 a	0,00±0,00 a
		Testa	1,00±0,00 a	0,00±0,00 a	0,00±0,00 a	0,00±0,00 a	0,00±0,00 a
		Cotyledon	0,60±0,24 a	0,00±0,00 a	0,20±0,20 a	0,00±0,00 a	0,20±0,20 a
		Mean	0,70±0,15 A	0,00±0,00 A	0,20±0,13 A	0,00±0,00 A	0,10±0,10 A
	Mean		0,78±0,00 X,Y	0,00±0,00 X	0,14±0,00 X,Y	0,00±0,00 X	0,07±0,00 X
	BAP 0,25mg/l and 2,4-D 0,8mg/l (C3)	Activated charcoal	Nucellus	0,00±0,00 b	0,50±0,50 a	0,50±0,50 a	0,00±0,00 a
Testa			1,00±0,00 a	0,00±0,00 a	0,00±0,00 a	0,00±0,00 a	0,00±0,00 a
Cotyledon			1,00±0,00 a	0,00±0,00 a	0,00±0,00 a	0,00±0,00 a	0,00±0,00 a
Mean			0,50±0,28 A	0,25±0,25 A	0,25±0,25 A	0,00±0,00 A	0,00±0,00 A
PVP		Nucellus	1,00±0,00 a	0,00±0,00 a	0,00±0,00 a	0,00±0,00 a	0,00±0,00 a
		Testa	1,00±0,00 a	0,00±0,00 a	0,00±0,00 a	0,00±0,00 a	0,00±0,00 a
		Cotyledon	0,20±0,20 a	0,00±0,00 a	0,40±0,24 a	0,00±0,00 a	0,40±0,24 a
		Mean	0,55±0,17 A	0,00±0,00 A	0,22±0,14 A	0,00±0,00 A	0,22±0,14 A
Mean			0,53±0,00 Y	0,07±0,00 X	0,23±0,00 X,Y	0,00±0,00 X	0,15±0,00 X
BAP 0,5mg/l and 2,4-D 0,8mg/l		Activated charcoal	Nucellus	1,00±0,00 a	0,00±0,00 a	0,00±0,00 a	0,00±0,00 a
	Testa		1,00±0,00 a	0,00±0,00 a	0,00±0,00 a	0,00±0,00 a	0,00±0,00 a

(C4)	Cotyledon	1,00±0,00a	0,00±0,00 a	0,00±0,00a	0,00±0,00a	0,00±0,00a
	Mean	1,00±0,00A	0,00±0,00 A	0,00±0,00A	0,00±0,00A	0,00±0,00A
PVP	Nucellus	0,00±0,00a	0,00±0,00 a	1,00±0,00a	0,00±0,00a	0,00±0,00a
	Testa	0,00±0,00a	0,00±0,00 a	0,00±0,00a	0,00±0,00a	0,00±0,00a
	Cotyledon	0,33±0,33a	0,00±0,00 a	0,66±0,33a	0,00±0,00a	0,00±0,00a
	Mean	0,25±0,25A	0,00±0,00 A	0,75±0,25A	0,00±0,00A	0,00±0,00A
	Mean	0,62±0,00X,Y	0,00±0,00 X	0,37±0,00X,Y	0,00±0,00X	0,00±0,00X

157 *Within column, means followed by letters of same characters are not significantly different ($P > 0.05$) according to the test for the Least*
158 *Significant Difference.*

159
160 Table 4 presents the results of the analysis of variance after 90 days of initial culture of the explants. The analysis of the
161 table showed that there was a highly significant difference ($P < 0.05$ to $p < 0.001$) in the effect of growth regulators and
162 antioxidants on calli production. There was also a significant effect of growth regulators on the achievement of low calli.
163 The interaction between growth regulators and antioxidants was significant in relation to calli production. Furthermore, it
164 was observed that the formation of moderate profuse, and highly profuse callus was not significantly different ($p > 0.05$)
165 between the media and antioxidants. Table 5 shows the effect of growth regulators and antioxidants on callus formation.
166 The Least significant difference test revealed that PVP significantly ($p < 0.05$) favored a large number of calli (77%) in
167 contrast to activated carbon (9%) on the medium with BAP 0.25 mg/l and 2,4-D 0.8 mg/l (C3). Similarly, C3 medium with
168 the combination of BAP 0.25 mg/l and 0.8 mg/l 2,4-D on the one hand and C4 medium with BAP 0.5 mg/l and 2,4-D 0.8
169 mg/l on the other hand appeared to be the best media for obtaining callus with 58% and 45% of callus formed
170 respectively. In most cases, the combination of 0.25 mg/l BAP and 0.8 mg/l 2,4D (C3) in the presence of PVP was
171 significantly ($p < 0.05$) better for callus formation.

172

173

174

175

176

177
178
179

Table 4 : F-values and level of significance from two-way Analysis of Variance (ANOVA) of callus formation regarding plant growth regulators (PGR) and antioxidant after 90 days

Source of variation	Degree of freedom	F-values				
		Callus formation after 90 days				
		No callus	slight callus	moderate callus	Profuse callus	highly profuse callus
PGR	4	5.58 ^{***}	2.78 [*]	0.80 ^{ns}	0.75 ^{ns}	1.85 ^{ns}
Antioxidants	1	6.43 [*]	0.95 ^{ns}	0.38 ^{ns}	0.89 ^{ns}	1.11 ^{ns}
PGR* Antioxidants	4	3.43 [*]	1.14 ^{ns}	0.80 ^{ns}	0.32 ^{ns}	1.85 ^{ns}

ns: $P > 0.05$ * : $P < 0.05$; ***: $P < 0.001$

180
181
182
183

Table 5 : Effect of growth regulators, antioxidant and explant on callus formation after 90 days (mean ± standard error)

Media	Antioxidants	Callus formation				
		No callus	slight callus	moderate callus	Profuse callus	highly profuse callus
BAP 0mg/l and 2,4-D 0,8mg/l (C0)	Activated charcoal	1,00±0,00a	0,00±0,00a	0,00±0,00a	0,00±0,00a	0,00±0,00a
	PVP	1,00±0,00a	0,00±0,00a	0,00±0,00a	0,00±0,00a	0,00±0,00a
	Mean	1,00±0,00A	0,00±0,00B	0,00±0,00A	0,00±0,00A	0,00±0,00B
BAP 0,25mg/l and 2,4-D 0mg/l (C1)	Activated charcoal	1,00±0,00a	0,00±0,00a	0,00±0,00a	0,00±0,00a	0,00±0,00a
	PVP	1,00±0,00a	0,00±0,00a	0,00±0,00a	0,00±0,00a	0,00±0,00a
	Mean	1,00±0,00A	0,00±0,00B	0,00±0,00A	0,00±0,00A	0,00±0,00B
BAP 0,5mg/l and 2,4-D 0mg/l (C2)	Activated charcoal	1,00±0,00a	0,00±0,00a	0,00±0,00a	0,00±0,00a	0,00±0,00a
	PVP	0,92±0,07a	0,00±0,00a	0,00±0,00a	0,07±0,07a	0,00±0,00a
	Mean	0,94±0,05A	0,00±0,00B	0,00±0,00A	0,05±0,05A	0,00±0,00B
BAP 0,25mg/l and 2,4-D 0,8mg/l (C3)	Activated charcoal	0,91±0,08a	0,08±0,08b	0,00±0,00a	0,00±0,00a	0,00±0,00a
	PVP	0,23±0,07b	0,40±0,09a	0,16±0,06a	0,20±0,07a	0,00±0,00a
	Mean	0,42±0,07B	0,30±0,07A	0,11±0,05A	0,14±0,05A	0,00±0,00B
BAP 0,5mg/l and 2,4-D	Activated charcoal	0,88±0,11a	0,00±0,00a	0,00±0,00a	0,11±0,11a	0,00±0,00a

0,8mg/l (C4)	PVP	0,50±0,13 ^a	0,07±0,07 ^a	0,00±0,00 ^a	0,21±0,11 ^a	0,21±0,11 ^a
	Mean	0,65±0,10 ^B	0,04±0,04 ^B	0,00±0,00 ^A	0,17±0,08 ^A	0,13±0,07 ^A

186

187 *Within column, means followed by letters of same characters are not significantly different (P > 0.05) according to the test for the Least*
 188 *Significant Difference.*

189

190

3.2.1. Effect of the concentration of growth regulators on callus formation

191 Table 6 shows the effect of concentration of growth regulators and type of antioxidant on callus formation. It **was noted**
 192 that the existence of both growth regulators in the medium is important for callogenesis in cashew. The C3 medium: 0.25
 193 mg/l BAP and 0.8 mg/l 2,4-D **seemed** to be the most important regulators of callogenesis.

194

195

Table 6 : Effect of growth regulators on callus formation after 90 days of culture (mean ± standard errors)

Amount of callus formed	BAP 0mg/l et 2,4-D0.8mg/l (C0)	BAP 0.25 mg/l et 2,4-D0mg/l (C1)	BAP 0.5mg/l et 2,4-D0mg/l (C2)	BAP 0.25mg/l et 2,4-D0.8mg/l (C3)	BAP 0.5mg/l et 2,4-D0.8mg/l (C4)
No callus	1.00±0.00 ^a	1.00±0.00 ^a	0.94±0.05 ^a	0.42±0.07 ^b	0.65±0.10 ^b
Slight callus	0.00±0.00 ^b	0.00±0.00 ^b	0.00±0.00 ^a	0.30±0.07 ^a	0.04±0.04 ^b
Moderate callus	0.00±0.00 ^a	0.00±0.00 ^a	0.00±0.00 ^a	0.11±0.05 ^a	0.00±0.00 ^a
Profuse callus	0.00±0.00 ^a	0.00±0.00 ^a	0.05±0.05 ^a	0.14±0.05 ^a	0.17±0.08 ^a
highly profuse callus	0.00±0.00 ^b	0.00±0.00 ^b	0.00±0.00 ^b	0.00±0.00 ^b	0.13±0.07 ^a

196 *The means followed by the same alphabetical letter of the same character and for the same factor are not significantly different (P>*
 197 *0.05) according to the test for the Least Significant Difference*

198

199

3.2.2. Combined effect of 2,4-D and antioxidants polyvinylpyrrolidone (pvp) and activated charcoal on the formation and survival of callus

200

201 2,4-D was able to induce callus from cotyledons on both activated charcoal and polyvinylpyrrolidone. On the activated
 202 charcoal medium, the nucellus also formed **ed** calli. However, callus formation **was** observed 28 days after the initial culture
 203 and the calluses did not last over time. Activated charcoal appeared **red** to be the antioxidant that significantly (p <0.05)
 204 **favoured** callus formation on the medium with only 2,4-D at 0.8 mg/l (C0).

205

206 **Table 7** : Combined effect of 2,4-D and antioxidants polyvinylpyrrolidone (pvp) and activated charcoal on callus formation
 207 and survival (mean ± standard errors)
 208

Explants	Antioxidants	28 days	90 days
Nucellus	Activated charcoal	1.20±0.32a	0.00±0.00a
testa	Activated charcoal	0.00±0.32b	0.00±0.00a
Cotyledon	Activated charcoal	0.50±0.36a	0.00±0.00a
Nucellus	polyvinylpyrrolidone	0.00±0.32b	0.00±0.00a
testa	polyvinylpyrrolidone	0.00±0.32b	0.00±0.00a
Cotyledon	polyvinylpyrrolidone	1.00±0.36a	0.00±0.00a

209 *The means followed by the same alphabetical letter of the same character and for the same factor are not significantly different (P>*
 210 *0.05) according to the test for the Least Significant Difference*
 211

212 **3.2.3. Effect of BAP at 0.25 mg/l on callus formation and survival**

213 Only the cotyledons yielded calli with both activated charcoal and polyvinylpyrrolidone with BAP at 0.25 mg/l. These calli
 214 appeared after 28 days of initial culture but did not survive.

215 **Table 8**: Effect of BAP at 0.25 mg/l and antioxidants polyvinylpyrrolidone (pvp) and activated charcoal on callus formation
 216 and survival (mean ± standard errors)
 217

Explants	Antioxidants	Callus after 28 days	Callus after 90 days
Cotyledon	polyvinylpyrrolidone	0.800±0.283a	0.00±0.00 a
Nucellus	polyvinylpyrrolidone	0.000±0.00a	0.00±0.00 a
Testa	polyvinylpyrrolidone	0.000±0.00a	0.00±0.00 a
Cotyledon	Activated charcoal	0.800±0.00a	0.00±0.00 a
Nucellus	Activated charcoal	0.000±0.00a	0.00±0.00 a
Testa	Activated charcoal	0.000±0.00a	0.00±0.00 a

218 *The means followed by the same alphabetical letter of the same character and for the same factor are not significantly different (P>*
 219 *0.05) according to the test for the Least Significant Difference*
 220

221 **3.2.4. Combined effect of BAP at 0.5 mg/l and antioxidants (polyvinylpyrrolidone and activated charcoal) on the**
 222 **formation and survival of callus from various explants**

223 BAP at 0.5 mg/l produced callus from nucellus and cotyledons but only with polyvinylpyrrolidone as antioxidant (Table 9).
 224 The calli that were produced from the cotyledons lasted up to 90 days, but the rate had halved. On the other hand, with
 225 activated charcoal, no callus production was noted for any explant.

226 **Table 9**: Effect of BAP at 0.5 mg/l and antioxidants polyvinylpyrrolidone (pvp) and activated charcoal on callus formation
 227 and survival (mean ± standard errors).
 228

Explants	Antioxidants	Callus (28 days)	Callus (90 days)
-----------------	---------------------	-------------------------	-------------------------

Cotyledon	polyvinylpyrrolidone	1.20±0.36a	0.60 ± 0.24a
Nucellus	polyvinylpyrrolidone	0.40±0.36a	0.00± 0.00a
Testa	polyvinylpyrrolidone	0.00±0.00b	0.00± 0.00a
Cotyledon	Activated charcoal	0.00 ±0.00b	0.00± 0.00a
Nucellus	Activated charcoal	0.00±0.00b	0.00± 0.00a
Testa	Activated charcoal	0.00±0.00b	0.00± 0.00a

The means followed by the same alphabetical letter of the same character and for the same factor are not significantly different ($P > 0.05$) according to the test for the Least Significant Difference

3.2.5. Combined effect of BAP at 0.25 mg/l; 2,4-D at 0.8 mg/l and antioxidants polyvinylpyrrolidone and activated charcoal on the formation and survival of callus from various explants

The analysis in Table 10 showed that the combination of BAP at 0.25 mg/l and 2,4-D at 0.8 mg/l produced callus that survived even beyond 90 days. Cotyledons in the presence of polyvinylpyrrolidone produced 2.40±0.29 callus that survived even beyond 90 days after the initial culture. Whereas with activated charcoal, callus formation did not occur after 28 days but we noticed it after 90 days. Nucellus, on the other hand, gave callus in the presence of both antioxidants with a high rate in the presence of activated charcoal (0.60±0.29). Moreover, these calli survived even beyond 90 days.

Table 10: Combined effect of BAP at 0.25 mg/l, 2,4-D and antioxidants polyvinylpyrrolidone (pvp) and activated charcoal on callus formation and survival (mean ± standard errors).

Explants	Antioxidants	Callus (28 days)	Callus (90 days)
Cotyledon	polyvinylpyrrolidone	2.40±0.29a	2.40±0.29a
Nucellus	polyvinylpyrrolidone	0.20±0.00b	0.20±0.00a
Testa	polyvinylpyrrolidone	0.00±0.00b	0.00±0.00a
Cotyledon	Activated charcoal	0.00±0.00b	0.40±0.29a
Nucellus	Activated charcoal	0.60±0.29b	0.60±0.29a
Testa	Activated charcoal	0.00±0.00b	0.00±0.00a

The means followed by the same alphabetical letter of the same character and for the same factor are not significantly different ($P > 0.05$) according to the test for the Least Significant Difference

3.2.6. Combined effect of BAP at 0.5 mg/l, 2,4-D and antioxidant on the formation and survival of callus

Table 11 showed that the presence of 0.5 mg/l BAP, 0.8 mg/l 2,4-D and 2.5 g/l polyvinylpyrrolidone increased the amount of callus with cotyledons. The combined presence of BAP and 2,4-D growth regulators increased the amount of callus formed. On the other hand, with activated charcoal, no callus production was noted for any explant except for nucellus which produced 0.20±0.00 callus after 90 days.

250 **Table 11:** Combined effect of BAP at 0.5mg/l, 2,4-D; polyvinylpyrrolidone (pvp) and activated charcoal on callus formation
 251 and survival (mean ± standard errors).
 252

Explants	Antioxidants	Callus (28 days)	Callus (90 days)
Cotyledon	polyvinylpyrrolidone	0.80±0.25a	3.00±0.23a
Nucellus	polyvinylpyrrolidone	0.40±0.25a	0.00±0.00b
Testa	polyvinylpyrrolidone	0.00±0.00b	0.00±0.00b
Cotyledon	Activated charcoal	0.00±0.00b	0.00±0.00b
Nucellus	Activated charcoal	0.00±0.00b	0.20±0.00b
Testa	Activated charcoal	0.00±0.00b	0.00±0.00b

253 *The means followed by the same alphabetical letter of the same character and for the same factor are not significantly*
 254 *different (P> 0.05) according to the test for the Least Significant Difference*
 255

256 4. Discussion

257 The results of this study showed that nucellus and cotyledons were the best explants for somatic embryogenesis in
 258 cashew. Cotyledons produced more calli than nucellus. However, the calli of nucellus were embryogenic, while those of
 259 cotyledons were not all embryogenic. Rangaswamy [14] has highlighted the potential of nucellus as an explant for in vitro
 260 research of woody plants. Nucellus tissue is of maternal origin, so the desirable traits of the parent are retained in the
 261 progeny derived from this tissue. Furthermore, due to the lack of vascular connection with the parent plant, the nucellar is
 262 regarded pathogen-free, and therefore plants of nucellar origin are disease-free. However, it has been observed that the
 263 hormone level of the whole kernel poorly reflects the levels in the immature embryos since the endosperm constitutes the
 264 majority of the dry matter of the kernel and, as demonstrated by Jiménez and Bangerth [15,16], the hormone levels in the
 265 endosperm can vary considerably from those in the immature embryos. Some authors believe that the level of
 266 endogenous phytohormones is very low in immature nut explants [17], which would be related to the days of incubation
 267 needed to trigger callogenesis. Therefore, in sum, callus formation with nucellus can be observed after 90 days of initial
 268 culture. The expression of morphogenetic competence *in vitro* is complex and influenced by physiological and genetic
 269 factors. Thus, the effect of explant type and concentration of BAP and 2,4-D was significant on callus formation, in line
 270 with other work on *Triticum durum* (durum wheat). Work on mango embryogenesis showed that the combination of 1 mg/l
 271 2,4-D and 0.25 mg/l BAP was the best for callus formation [8]. Culturing explants in 2,4-D-containing media, which is the
 272 traditional induction method for many species, has been shown to enhance endogenous auxin levels in the explants [18].
 273 It has also been discovered that polar auxin transport is required for the formation of bilateral symmetry in dicotyledonous
 274 plants during somatic embryogenesis [19]. Once the stimulus for further development of somatic embryos has been
 275 delivered (i.e., by reducing or removing 2,4-D from the culture medium), these levels must be reduced to allow the

276 establishment of the auxin polar gradient. The gradient cannot be created and somatic embryogenesis cannot be
277 expressed if the levels are excessively low or high, or if they do not decrease following the induction treatment. In all
278 species reported in the literature where embryogenic and non-embryogenic callus lines could be obtained in the presence
279 of 2,4-D, it was observed that embryogenic callus contained higher levels of free IAA than non-embryogenic callus. These
280 higher levels may be important in the establishment of polar auxin transport, which is postulated to be critical in the
281 development of somatic embryogenesis. In Arabidopsis, high auxin levels have been reported in cotyledon primordia and
282 cotyledons [20], consistent with the embryogenic competence displayed by the cotyledonary parts of zygotic embryos
283 [21,22]. Sucrose concentration was found to directly influence the uptake of BAP by sunflower explants, and soon
284 afterwards, the levels of endogenous auxins and cytokinins were altered, triggering an organogenic or embryogenic
285 response [23]. The majority of woody plants and some herbaceous species grown in vitro show a browning of the
286 medium. If this browning was extreme, the explants would turn brown to black, necrose and eventually die [24]. In this
287 study, PVP was found to be almost effective in controlling browning, especially in the cotyledons. This could be due to the
288 specificity of these chemicals for certain plants and species. The specificity of PVP in controlling browning has also been
289 reported by Vaugh and Duke [25]. The addition of activated charcoal to liquid and semi-solid media is a recognized
290 practice and its influence on growth and development can be attributed mainly to the adsorption of inhibitory substances
291 in the culture medium [26-30], drastically decreasing phenolic oxidation or accumulation of brown exudate [31-33],
292 changing the pH of the medium to an optimal level for morphogenesis [34] and establishing a darkened environment in
293 the medium and thus simulating soil conditions [35].

294 5. Conclusion

295 This study shows that for obtaining viable and embryogenic callus, the combination of BAP at 0.25 mg/L and 0.8 mg/L of
296 2,4-D is the best and this in the presence of PVP as an antioxidant. The nucellus respond better in the presence of
297 activated charcoal. A protocol of pro-embryonic calli formation from the nucellus, and cotyledons has been established.
298 This protocol has as its basal medium: B5 macroelements, MS microelements, vitamins MS and 400mg/l of L-Glutamine,
299 500 mg/l of casein hydrolysate, 2.5g/L of Polyvinylpyrrolidone (PVP), 6% of Sucrose. The BAP and 2,4-D growth
300 regulators are associated alone or in combination. As for the type of explant, the testa does not significantly induce the
301 formation ($p>0.05$) of callus compared to nucellus (12.06%) and cotyledon (20.7%) that induce callus.

302
303
304
305
306

ACKNOWLEDGEMENTS

We acknowledge all the Doctors of the Central Laboratory of Plant Biotechnologies and Plant Improvement of the University of Abomey-Calavi that have greatly contributed to the reviewing of this manuscript.

FUNDING

This study was supported in part by the High Ministry of Education and Scientific Research of Benin. Addition support have been received from West Africa Agricultural Productivity Program (WAAPP) funded by World Bank. The funders have not any role in the research conducting and manuscript writing.

COMPETING INTERESTS

The authors declare that they have no conflict of interest regarding the manuscript. All authors have read and accepted the manuscript for publication.

AUTHORS' CONTRIBUTIONS

BSAA, BTB, SSH have conceptualized the topic and investigated the work while BSAA, GHTC, BTB have written first original draft. CA and JD have complementally supervised the work and JAH have reviewed and edited the manuscript for publication. All authors read and approved the final manuscript.

REFERENCES

1. Gogate SS, Nadgauda RS. Induction of direct somatic embryogenesis in immature zygotic embryo of cashew (*Anacardium occidentale* L.). *Sci. Hort.* 2003; 97:75-82.
2. Loyola-Vargas VM, Fuentes-Cerda CFJ, Monforte-González M, Méndez ZM, Rojas-Herrera R, Mijangos-Cortés J. Coffee tissue culture as a new model for the study of somaclonal variation. (18th International Scientific Symposium on Coffea, ASIC, Helsinsky.) 1999; 302-307.
3. Sbay H, Lamhamedi MS. Guide pratique de multiplication végétative des espèces forestières et agro forestières : Techniques de valorisation et de conservation des espèces a usages multiples face aux changements climatiques en Afrique du nord. *Centre de Recherche Forestière.* 2015 ; 96 :72.
4. Aliyu, OM. Application of tissue culture to cashew (*Anacardium occidentale* L.) breeding: An appraisal. *Afr J of Biotec.* 2005;4(13):1485-1489.

- 342 5. Mantell SH, Boggett B, Bessa AMS, Lemos EEP, Abdelhadi A, Mneney EE. Micropropagation and micrografting
343 methods suitable for safe international transfer of cashew. In: Proceedings of international cashew and coconut
344 conference. 1998; 95–107.
- 345 6. Ananthakrishnan G, Ravikumar R, Anand RP, Vengadesan G, Ganapathi A. Induction of somatic embryogenesis
346 from nucellus-derived callus of *Anacardium occidentale* L. Sci hort. 1999;79(1):91-99.
- 347 7. Krishna H, Singh SK. Biotechnological advances in mango (*Mangifera indica* L.) and their future implication in
348 crop. Biotechnology Advances 2007; 25(3):223-243. doi: 10.1016/j.biotechadv.2007.01.001.
- 349 8. Al-Busaidi KT, Shukla M, Al-Burashdi AH, Al-Blushi GS, Al-Jabri MH, Al-Kalbani BS, Al-Hasani HD. *In vitro*
350 regeneration of Mango (*Mangifera indica* L.) cv. Baramasi through nucellar embryogenesis. J of Hort and For.
351 2007;8(5):37-43.
- 352 9. Mishra M, Shree Y, Pati R, Seal S, Shukla N, Kamle M, Chandra R, Srivastava A. Micropropagation of *Mangifera*
353 *indica* L. cv. Kurakkan through somatic embryogenesis. Ind J Genet Plant Breed. 2010; 70:85-90.
- 354 10. Ara H, Jaiswal U, Jaiswal VS, Somatic embryogenesis and plantlet regeneration in Amrapali and Chausa cultivars
355 of mango (*Mangifera indica* L.) Curr. Sci. 2000; 78:164-169.
- 356 11. Litz RE. *In vitro* regeneration and transformation of mango. In: Jaiwal K, Singh RP, (eds.). Plant Genet. Eng. LLC:
357 Sci. Tech. Publishers. 2003; 23-40. Phillip VJ, Unni PN.
- 358 12. Shirley RA, Thimmappaiah. Somatic embryogenesis from nucellar callus of cashew. J Horticult Sci Biotechnol.
359 2005 ;80 :327–331.
- 360 13. Dagnelie P. Statistique théorique et appliquée. Tome 2 : Inférences statistiques à une et deux dimensions. De
361 Boeck et Larcier. Paris-Bruxelles. France Belgique. 1998; 659
- 362 14. Rangaswamy NS. Nucellus as an experimental system in basic and applied tissue culture research. In:
363 Proceedings of the COSTED Symposia on Tissue Culture of Economically Important Plants. Singapore. (Rao.
364 AN. Ed.). 1982; 269–286.
- 365 15. Jiménez VM, Bangerth F. Endogenous hormone concentrations and embryogenic callus development in wheat.
366 Plant Cell Tiss Org Cult. 2001a; 67:37-46.
- 367
- 368 16. Jiménez VM, Bangerth F. Hormonal status of maize initial explants and of the embryogenic and non-embryogenic
369 callus cultures derived from them as related to morphogenesis *in vitro*. Plant Sci. 2001b; 160:247-257.
- 370 17. Qureshi JA, Kartha KK, Abrams SR, Steinhauer L. Modulation of somatic embryogenesis in early and late-stage
371 embryos of wheat (*Triticum aestivum* L.) under the influence of (+/-)-abscisic acid and its analogs. Plant Cell Tiss
372 Org Cult. 1989; 18(1):55-69.

- 373 18. Michalczuk L, Ribnicky DM, Cooke TJ, Cohen JD. Regulation of indole-3- acetic acid biosynthetic pathways in
374 carrot cell cultures. *Plant Physiol.* 1992; 100:1346-1353.
- 375 19. Schiavone FM, Cooke TJ. Unusual patterns of somatic embryogenesis in the domesticated carrot: developmental
376 effects of exogenous auxins and auxin transport inhibitors. *Cell Diff.* 1987; 21:53-62.
- 377 20. Ni DA, Wang LJ, Ding CH, Xu ZH. Auxin distribution and transport during embryogenesis and seed germination of
378 *Arabidopsis*. *Cell Res.* 2001; 11:273–278.
- 379 21. Luo Y, Koop HS. Somatic embryogenesis in cultured immature zygotic embryos and leaf protoplasts of
380 *Arabidopsis thaliana* ecotypeeemys. *Planta.* 1997; 202:387–396.
- 381 22. Gaj MD. Direct somatic embryogenesis as a rapid and efficient system for *in vitro* regeneration of *Arabidopsis*
382 *thaliana* (L.) Heynh. *Plant Cell Tiss Org Cult.* 2001;64: 39–46.
- 383 23. Charriere F, Hahne G. Induction of embryogenesis versus caulogenesis on *in vitro* cultured sunflower (*Helianthus*
384 *annuus* L.) immature zygotic embryos: role of plant growth regulators. *Plant Sci.* 1998;137: 63–71.
- 385 24. Ko W, Su C, Chen C, Chao C. *Plant Cell Tiss Org Cult.* 2009; 96:137-141.
- 386 25. Vaughn KC, Duke SO. Function of polyphenol oxidase in higher plants. *Physiol Planta.* 1984; 60:106-112.
- 387 26. Fridborg G, Pedersen M, Landstrom LE, Eriksson T. The effect of activated charcoal on tissue cultures:
388 adsorption of metabolites inhibiting morphogenesis. *Physiol Plant.* 1978; 43:104–6.
- 389 27. Horner M, McComb JA, McComb AJ, Street HE. Ethylene production and plantlet formation by *Nicotiana* anthers
390 cultured in the presence and absence of charcoal. *J Exp Bot.* 1977; 28:1366–72.
- 391 28. Theander O, Nelson DA. Aqueous, high temperature transformation of carbohydrates relative to utilization of
392 biomass. *Adv Carbohydr Chem Biochem.* 1988; 46:273–326.
- 393 29. Weatherhead MA, Burdon J, Henshaw GG. Some effects of activated charcoal as an additive to plant tissue
394 culture media. *Z Pflanzenphysiol.* 1978; 89:141–7.
- 395 30. Weatherhead MA, Burdon J, Henshaw GG. Effects of activated charcoal as an additive plant tissue culture media.
396 *Z Pflanzenphysiol.* 1979; 94:399–405.
- 397 31. Carlberg I, Glimelius K, Eriksson T. Improved culture ability of potato protoplasts by use of activated charcoal.
398 *Plant Cell Rep.* 1983; 2:223–5.
- 399 32. Liu MSC. Plant regeneration in cell suspension culture of sugarcane as affected by activated charcoal, medium
400 composition and tissue culture. *Taiwan Sugar.* 1993; 18–25.
- 401 33. Teixeira JB, Sondahl MR, Kirby EG. Somatic embryogenesis from immature inflorescences of oil palm. *Plant Cell*
402 *Rep.* 1994; 13:247–50.

- 403 34. Owen HR, Wengerd D, Miller AR. Culture medium pH is influenced by basal medium, carbohydrate source,
404 gelling agent, activated charcoal, and medium storage method. *Plant Cell Rep.* 1991; 10:583–6.
- 405 35. Dumas E, Monteuis O. *In vitro* rooting of micropropagated shoots from juvenile and mature *Pinus pinaster*
406 explants—influence of activated charcoal. *Plant Cell Tiss Org Cult.* 1995; 40:231–5.

407

408 **DEFINITIONS, ACRONYMS, ABBREVIATIONS**

409 AC: Activated Charcoal

410 ANOVA : Analysis of Variance

411 BAP : 6-benzylaminopurine

412 B5 : Gamborg medium

413 °C: Degree Celsius

414 2,4-D: 2,4-Dichlorophenoxyacetic acid

415 g/l: gramme per litre

416 IAA: Indole-3-Acetic Acid

417 LSD: Least Significant Difference

418 mg/l: milligram per litre

419 mm: millimetre

420 MS: Murashige and Skoog, 1962

421 %: Percentage

422 PEC: Pro-Embryonic Calli

423 PGR: Plant Growth Regulators

424 pH: Potential of Hydrogen

425 PVP: Polyvinylpyrrolidone

426 SAS: Statistical Analysis System

427