

## Review Article

### A brief study on Trichomonas Vaginalis

#### ABSTRACT:

In today's modern world women faces too many challenges in front of them and in an country like India. There is still old system in which women can't work they are kept at home they agree indulged in house hold activities and their dreams don't matter. they are not aware of the changes in their own body due o complete negligence or ill-literacy. India is still one of the most ill literate countries in the world and its economy is still very low and beyond advancement.

is a developing country and nowadays people are starting to get aware about problems of women. now in today's society women are allowed to work-and they are not kept at their household but are given an opportunity as equals. But still there are many places in India which are not aware about problems faced by women and they don't know how to help them and we have to provide them education about their own healthy bodily practices.

Women in the modern and ancient world were affected by many such diseases which causes harm not only to them but also to their young ones if untreated .in the modern culture. now a days a new trend of having multiple sexual partners have become common. and therefore, due to unsafe and unprotected sex practices due to poor awareness a lot of diseases has been transmitted worldwide to both genders of men and women.

Trichomoniasis vaginal is one of the most common sexually transmitted disease in women caused by a parasite which transmitted during unsafe and unprotected during sexual practices

**Keywords: Sexually Transmitted, Wet Mount, RT PCR, Unsafe Sex Practices**

## INTRODUCTION:-

The sexually transmitted diseases are one of the commonest and most widespread diseases in the current growing world. They are a variety of diseases which come under the section of sexually transmitted diseases causing upper and lower urinary tract infections. Sexually transmitted diseases are communicable and maybe through placental transmission which is also known as vertical transmission there are many STDs as discussed and it follows as:

Syphilis

HIV aids

Gonorrhoea

Trichomoniasis

Human papilloma virus

Chlamydia

Vulvovaginitis

Hepatitis B

It is caused in almost around the globe but in India it is transmitted in a fast way like a wildfire in the forest as there is lack of awareness and negligence towards the sexual practices and bodily hygiene.

These sexually transmitted diseases cause manifestations and problems in our body which may either be locally (caused only in the affected area) or systemic (spread to other places of body through a variety of circuit).

These may be either direct that means without an intermediary path and travels through add on and causes the following malady in the homo sapiens .the other circuits or the pathways of passing on the disease is by the lymphatic spread to the close by regional lymph nodes or due to the hematogenous spread in the bodywork physique. In the hematogenous spread it is spread through blood by just flowing in the blood and reaches varies organs and causes some problems in the organ and the organs commonly involved are the liver ,lungs,brain and bones .the spread of these invasive diseases affects the body and the cells of body such as the parenchyma. The purpose of studying these sexually transmitted diseases is to determine the problems and factors and to reduce the development of another complex diseases .the lesions are caused not only in women but also in both the sexes of man and women due to unsafe and unhygienic sexual practices .<sup>2</sup>

The female genital tract infections include infections in vagina and is caused due to parasites such as trichomonias causes trichomoniasis vaginal and this is a protozoa infection.<sup>2</sup>

The activating agent of this infection is found out to be a protozoa parasite and the name of the disease is Trichomonas vaginalis and this is one of the most features affecting the female reproductive tract and producing cases of affecting the vaginal areas and causing of vaginitis. Despite the fact that trichomoniasis is a rapidly identified and treated sexually transmitted infection (STD), it is not a reportable condition, and treatment of the infection has gotten very little.<sup>2</sup>

Women in the modern and ancient world were affected by many such diseases which causes harm not only to them but also to their young ones if untreated .in the modern culture .now a days a new trend of having multiple sexual partners have become common . and therefore due to unsafe and unprotected sex practices due to poor awareness a lot of diseases has been transmitted worldwide to both genders of men and women .<sup>3</sup>

The infection causing parasite appears to be a pear-shaped fungus that grows to be around 10-13x8-10 $\mu$ m in size. The organisms that have been attached and dyed have shrunk by around 25%. They feature four anterior flagella and a cytoplasmic fold, the flowing undulating membrane, on one side of the body for about a third of its length. The coat is supported by a third rod, and a fifth flagellum attached there creates a wave-like motion. protozoa infection in women frequently manifests itself in clinical signs throughout their reproductive years.<sup>3</sup>

The disease is clinically manifested and featured with pain discharge from the female **rt** of either from the cervix or vaginal causing vaginal discharge. **period** goes from 3 to 28 days. In ladies, trichomoniasis cause as something from a symptom less contamination to an intense fiery illness, with a plentiful, rotten release. The seriousness of the release could adjust after some time. **and** this happens due to the unawareness of personal hygiene and healthy bodily practices and clinical negligence leaves it untreated. If untreated, the disease is likewise extemporaneous lost or may continue for a **long time or a long time**. The release is traditionally portrayed as foamy, in any case, it's foamy in with respect to 10% of patients. **the shade of the release might fluctuate.**<sup>3</sup>

These signs and symptoms of this disease is represented with cases are cyclic and worsen around the time of menses. In chronic infection, the predominant symptoms are mild, with itch and dyspareunia, whereas the vaginal secretion is also terribly scanty and mixed with mucus. this type of unwellness is especially important from the medical specialty purpose of reading as a result of these people are the main supply of transmission of the parasite.<sup>4</sup>

Up to 25 to half of tainted young ladies are symptom less and have a standard epithelial conduit pH of 3.8 to 4.2 and a typical vaginal verdure. **however** there's a transporter structure, half of those ladies can foster clinical manifestations all through the following about a half year. **however** talk is that the most average appearance of T. vaginal disease in ladies, **Bartholin's organ is a periodic focal point of contamination.** elective intricacies identified with protozoa contamination embrace adnexitis, pyosalpinx, endometritis, fruitlessness, low birth weight, and cervical disintegration. protozoa disease is also identified with exaggerated HIV transmission. The degree of the fiery reaction to the parasite could affirm the seriousness of the side effects. **Elements that impact the host incendiary reaction don't appear to be surely known anyway may**

accept emission levels, the simultaneous epithelial pipe vegetation, and along these lines the strain and relative convergence of the life forms gift inside the vagina. In each sex, scattering on the furthest side of the lower framework lot is exceptionally uncommon and isn't frequently found even in seriously agitated patients. A special characteristic of T. vaginal infection is that it's often recurrent, with no lasting immunity, suggesting the importance of innate immunity. work designation of T. epithelial ductus infection is sometimes done on the premise of clinical symptoms, however in women, the characteristics of the vaginal discharge, as well as color and odor, are poor predictors of T. vaginal. Detection of T. vaginal organism is crucial to the diagnosis of T. vaginal as a result of the clinical signs and symptoms are unreliable, and as several as 50% of cases are symptom less.<sup>4</sup>

A recent specimen from the vaginal secretion is taken and transferred by a sterile wire loop to a glass slide, a canopy slip is going to be placed on it and so be examined victimization high power, dark-field, or section distinction research.<sup>4</sup>

## MICROSCOPIC EXAMINATION

Since now after the identification of the microorganism causing this common STD was found out to be a protozoal parasite, the laboratory diagnosis and the microscopic examination should be done. and the parasite causing the infection in the human beings is found to be a motile parasite. The disease which is discussed might not be easy because the protozoa has a miscellaneous or varying presentation and there might be a grade of hardness and difficulties lined up with the test for diagnosis. there is an old and cost efficient and trusted method which has been used over a period of years and this is the Wet mount and in the modern and current growing world there has been named a method which might be commanding and more useful in the diagnostic and lab diagnosis. this is the In-pouch method. The parasite is happen to be found in the cervical secretions and that too maybe in the duct of epithelium. 34%-49% is the sensitivity for the dark microscopy wet culture technique. The medium used for culture is diamonds medium. its is found to be more useful. and it is also proven that this can be cultured in a cell process in vitro. this helps to induce or produce cell line of varied or different variety.<sup>4</sup>

The diagnostic test is done and the result might be provided within a span of an analogous grade of time span including around 2-7 days. During his time span it is also evitable that the virus

might multiply more in the body and the probabilities and odds of the infections spreading is increased since the odds are in the favour of the cultures spreading the **virus** in the infected people and this might enlarge or expand the susceptibility of the diagnosis.<sup>5</sup>

the lymphatic spread to the close by regional lymph nodes or due to the hematogenous spread in the bodywork physique. In the hematogenous spread it is spread through blood by just flowing in the blood and reaches various organs and causes some problems in the organ and the organs commonly involved are the liver, lungs, brain and bones. the spread of these invasive diseases affects the body and the cells of body such as the parenchyma.<sup>6</sup>

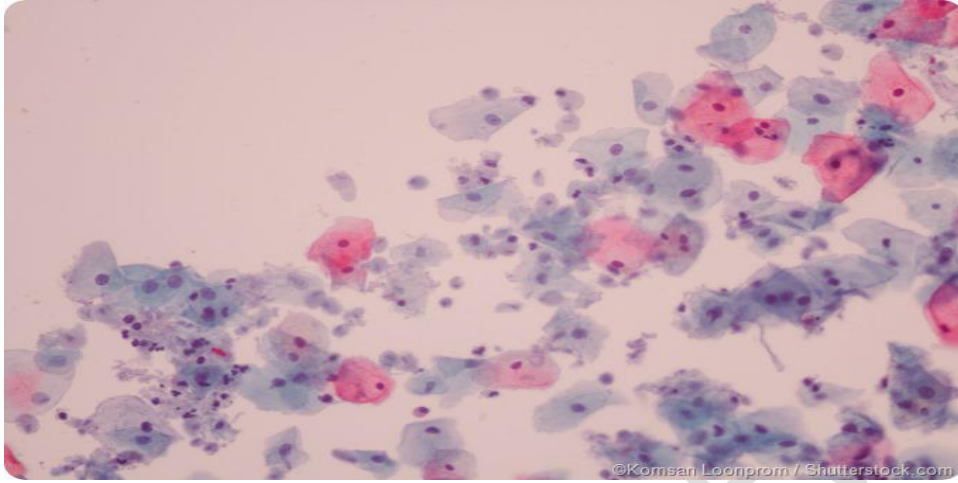
.., papanicolaou staining has a lot of appeal in the diagnosis of protozoa infection. Because T. vaginalis does not always appear in its characteristic pear-shaped form with flagella, staining approaches have limits. It appears as spherical forms that resemble polymorphonuclear leukocytes, and conventional morphologic traits are usually lost during fixation and staining, making etiologic identification difficult.<sup>6</sup>

*Trichomonas vaginalis* is a frequent infecting sexually transmitted disease due to unsafe and unhygienic sexual practices due to lack of awareness about the sexually transmitted disease in a growing population of more than a billion. and these are type of infections which does not stay with just the infected person but also has the virulence of affections ones own body by affecting the common body host immune complexes.<sup>7</sup>

.. PCR which appears to be an alternate method for detecting venereal trichomoniasis infection. apart from PCR tests there are other types of polymerase chain reaction used in the finding out and identifying process. these may include MULTIPLEX PCR, REAL TIME PCR and the RT-PCR. as you all commonly know RT-PCR is done through a swab culture or test. the more frequently used and most detectable and easily available swab is through the vaginal canal and it is known as the vaginal swab which is preserved in suitable culture media. tubulin cistron may fail due to numerous amount of genetic and special variance produced in sequence. there are many techniques employed to find out the presence of the protozoa parasite in the body's framework. this may include the basically and most frequently used wet mount. the trichomonias channels which are found out to be examined and identified in the vaginal canal by swab culture techniques prove that more than  $\{ \{ >90\% \}$  of the infections which are caused are in the exterior or external region of cervical region/cervix, and the clinical and laboratory findings and studies which are established due to various methods prove that there are infections are manufacture produced are produced from the endocervical region. but the patients suffering from endocervical manifestations during the peak of infection have shown that studies prove about 13% of the infections are produced.

there are certain symptoms which are exclusively produced in the gender of females than male. these symptoms in women include erythroderma and not only this but also a variety of surface necrosis, the breaking down and disintegration of tissues of the animals and severe infiltration by the poly morphs, and these are just a group of wbc's and their granular cytoplasm which has their important function as PHAGOCYTOSIS and MACROPHAGES are seen in biopsies of cervical and epithelial ducts.<sup>8</sup>

The symptoms included by the common and least common protozoal infections may include some clinical features and manifestation such as the discharge of the epithelial duct, dysuria, vulvar erythema and vaginitis the patients diagnosed can be produced to have the skin irritation chemical sensation. the studies and some famous research article also provide us with the information that there might or might not be around discharge which is about to be estimated of 65%-73% frothy and yellow in 12%-28%, and approximately 2%.<sup>9</sup>



**Fig 1. protozoal infections**

### **Antibody-based techniques**

There are various methods to detect the disease but some tests are not specific because their specificity is low for the diagnosis of the diseases which is caused. Therefore, more proper and accurate and specific tests are preferred for the approximate diagnosis of the trichomoniasis disease which is a sexually transmitted disease caused due to poor hygiene and unsafe and unprotected habitual sexual practices.<sup>9</sup>

Therefore, the diagnostic test for trichomoniasis vaginalis is to find the antibodies (Ab) produced against the antigens produced by the protozoa. The human body produces antibodies due to various immune complex mechanisms produced by the host immune system with the help of T cells and the CD4 T cells mechanism. Therefore, these antibodies can be detected in the host framework serum level which may be lofty and towering, which is an attribute or a trait produced by the infected individual. In the modern era, a variety of laboratory procedures are founded and followed for the easy identification of these complex sexually transmitted diseases. A variety of methods, including agglutination, complement fixation, indirect hemagglutination, gel diffusion, fluorescence opposed body produced by IFT, and ELISA.<sup>10</sup>

there are variety of other tests and methods indulged to diagnose and confirm the disease . the tests and methods for testing at molecular level may include various recently enlarging DNA methods which has oppressively enlarged at the molecular level with increased specificity and it has a lot of scope in the future to be more accurate and ore specific neglecting the inconclusive diagnosis and to note the respective changes on the epithelial lining of vagina ..these epithelial changes maybe produced which might be cause due to protozoa parasite causing disease in the living individual mainly of the reproductive stage of their life where they have a regular sexual drive .many types of chain reaction are also done to diagnose properly.<sup>10</sup>

these may include the PCR which appears to be an alternate method for detecting venereal trichomoniasis infection.apart from PCR tests there are other types of polymerase chain reaction used in the finding out and identifying process . these may include MULTIPLEX PCR . REAL TIME PCR and the RT-PCR .as you all commonly know RT-PCR is done through a swab culture or test . the more frequently used and most detectable and easily available swab is through the vaginal canal and it is knows as the vaginal swab which is preserved in suitable culture medias .tubulin cistron may fail due to numerous amount of genetic and special variance produced in sequence.<sup>10</sup>

there are many techniques employed to find out the presence of the protozoa parasite in the body's framework .this may include the basically and most frequently used wet mount. But its specificity is not in the expected range that it can be con firmly confirmed. Since the percentage is about 58.97% whereas a 100% specificity is difficult to obtain for any medical laboratory test but the PCR have done a good job in testing out the sample and processing and singling out the differences produced by various microbial agents in causing the most common STD's and by the way the PCR are using primers targets Tv-E650 had 80% sensitivity and 97.95% specificity.<sup>11</sup>

Adding to this information , Multiplex PCR is a standard approached method for detecting co infecting the infections during the same gap of interval of time span . Multiplex PCR was introduced and helped in detect the primer of the protozoa parasite improvisation of the which might be of TvA5, this is a primer used in the following victimization of in the investigation primer and this might result in the test for the almost accurate infection caused . it is used in the

both the sexes of the canals of the men and women respectively.<sup>11</sup>

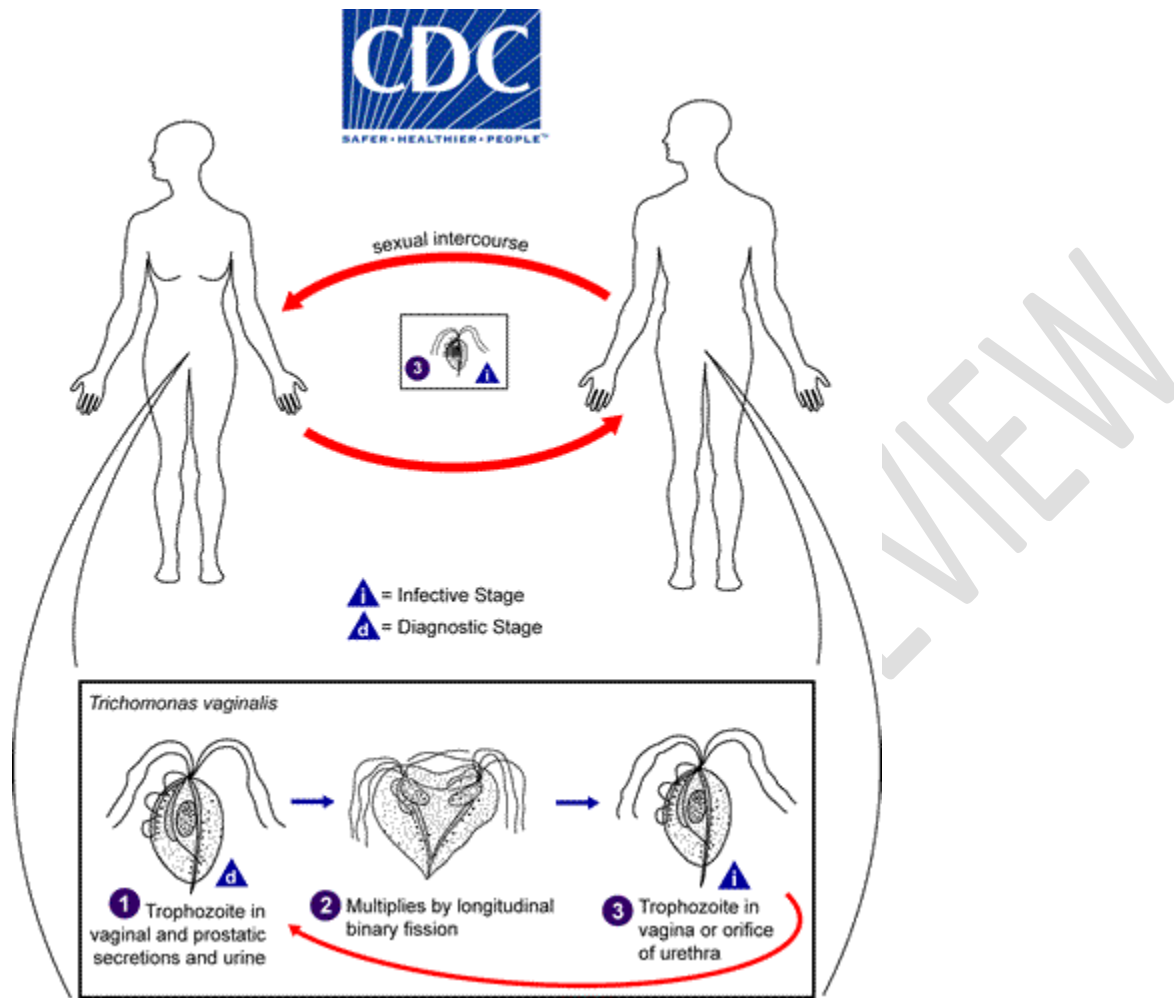


Fig 2. Antibody-based techniques

## SUMMARY:

*Trichomonas vaginalis* is a frequent infecting sexually transmitted disease due to unsafe and unhygienic sexual practices due to lack of awareness about the sexually transmitted disease in a growing population of more than a billion.<sup>12</sup>

and these are type of infections which does not stay with just the infected person but also has the virulence of affections ones own body by affecting the common body host immune complexes and still affect the other person through coitus interruptus when its conducted unsafely or with multiple sexual partners . a common explanation for vaginitis due to the clinical features which is changed obviously before the starting of the affecting manifestations .and many of the times the manifestations or features produced associated with the disease might be rare or transient or maybe more clinically infecting and affecting the individuals of less immune system there are many standard and golden standard techniques and methodical advancements to find out and diagnose.<sup>13</sup>

The above present protozoal parasite infection which affects the male and females mostly where the females are slightly more affected in this in case and these parasite can be seen or identified or observed in the laboratory under powerfully scoped and equipped microscopic examination to identify and diagnose the methods for the detection during these procedures there may be present . and in the case of examination of the method of wet scope is sort of rapid and it is more preferred over the others test cause  $10^3$  ml of the unkilld and live protozoa is needed for the identification of the the disease infection caused by the protozoa parasite .the most least and less maybe a minimum inoculate may demand the positive result to prove that a positive result.<sup>13</sup>

However the diagnostic kit for the findings of the .PCR seems to be the typical tactical accumulative alternative for the identification and gathering specific labatarorical infection against the venerable infection to the host body framework causing the mode of venereal trichomoniasis against finding infections with high sensitivities and wonderful specialties for each of the collected vaginal samples from the swab cultures.<sup>13-18</sup>

**CONCLUSION:-** In India and in this growing population due to least awareness programs women are still facing difficulties and health educated problems which lacks them from having taking care of themselves when they bound to know about their primary or secondary clinical manifestation or infection produced in the body and treating it rather than diagnosing in the last state when its almost not curable or almost out of our reach to cure the disease and bring one's normal routine life back.

**T.vaginal** is still common among women who have vaginal discharge, with sexually active women bearing a greater risk load. Health promotion and education, as well as strategies aimed at raising illness awareness among these high-risk groups, are required.

## REFERENCES

**1)**

Viscogliosi, E., V. P. Edgcomb, D. Gerbod, C. Noel, and P. Delgado-Viscogliosi. 1999. Molecular evolution inferred from tiny monetary unit rRNA sequences: what will it tell us to regard ing phyletic relationships and taxonomy of the parabasalids Parasite 6:279–291

2) Bradley, P., C. J. Lahti, E. Plumper, and P. J. Johnson. 1997. Targeting and translocation of supermolecules in to the hydrogenosome into microorganism Trichomonas: similarites with mitochondria similarities import

3) Lowe GH, A comparison of current laboratory strategies and a brand new semi-solid medium for the detection of Trichomonas vaginal, J Clin Pathol. 1965 Jul;18:432-4.

4) (Liquid primarily based Cytology) in medical specialty cytology, Romanian Journal of Morphology and biology 2005, 46(1):23–27.

- 5) Sibiu L, Bebb D, Proctor EM, pioneer WR, Enzyme-linked immunosorbent assay for the designation of protozoa infection in women. *Sex. Transm. Dis.* 1987. 14:216–220. 201
- 6) M. Chirenje, N. Dhibi, H. H. Handsfield et al., “The etiology of vaginal discharge syndrome in Zimbabwe: results from the Zimbabwe STI etiology study,” *Sexually Transmitted Diseases*, vol. 45, no. 6, pp. 422–428, 2018. [View at: Publisher Site | Google Scholar](#)
- 7) E. Lyons, S. Ketende, D. Diouf et al., “Potential impact of integrated stigma mitigation interventions in improving HIV/AIDS service delivery and uptake for key populations in senegal,” *Journal of Acquired Immune Deficiency Syndromes*, vol. 74, supplement 1, pp. S52–S59, 2017. [View at: Publisher Site | Google Scholar](#)
- 8) N. Meda, I. Ndoye, S. M'Boup et al., “Low and stable HIV infection rates in Senegal: Natural course of the epidemic or evidence for success of prevention?” *AIDS*, vol. 13, no. 11, pp. 1397–1405, 1999. [View at: Publisher Site | Google Scholar](#)
- 9) R. P. Nugent, M. A. Krohn, and S. L. Hillier, “Reliability of diagnosing bacterial vaginosis is improved by a standardized method of gram stain interpretation,” *Journal of Clinical Microbiology*, vol. 29, no. 2, pp. 297–301, 1991. [View at: Google Scholar](#) P. Kissinger, “Epidemiology and Treatment of Trichomoniasis,” *Current Infectious Disease Reports*, vol. 17, no. 6, p. 484, 2015.
- 10) Borchardt KA, Zhang MZ, Shing H, Flink K, A comparison of the sensitivity of the InPouch TV, Diamond's, and Trichosel media for detection of *Trichomonas vaginalis*, *Genitourin Med* 1997;73:297-298.
- 11) Garber GE, Lemchuk-Favel LT, Bowie WR, Isolation of a cell-detaching factor of *Trichomonas vaginalis*, *J Clin Microbiol.* 1989 Jul;27(7):1548-53.
- 12) Greenwood JR, Kirk-Hillaire K, Evaluation of Acridine Orange Stain for Detection of *Trichomonas vaginalis* in Vaginal Specimens, *J Clin Microbiol.* 1981 Dec;14(6):699.
- 13) Lowe GH, A comparison of current laboratory methods and a new semi-solid culture medium for the detection of *Trichomonas vaginalis*, *J Clin Pathol.* 1965 Jul;18:432-4.

14) Popescu CF, Bădulescu A, Bădulescu F, Cotarcea S, Găvănescu M, Preliminary study concerning the Cytoscreen system importance (Liquid Based Cytology) in gynecologic cytology, Romanian Journal of Morphology and Embryology 2005, 46(1):23–27.

15) Burhani, Tasneem Sajjad, and Waqar M. Naqvi. “Telehealth - A Boon in the Time of COVID 19 Outbreak.” **JOURNAL OF EVOLUTION OF MEDICAL AND DENTAL SCIENCES-JEMDS** 9, no. 29 (July 20, 2020): 2081–84. <https://doi.org/10.14260/jemds/2020/454>.

16) Gawai, Jaya Pranoykumar, Seema Singh, Vaishali Deoraaji Taksande, Tessy Sebastian, Pooja Kasturkar, and Ruchira Shrikant Ankar. “Critical Review on Impact of COVID 19 and Mental Health.” **JOURNAL OF EVOLUTION OF MEDICAL AND DENTAL SCIENCES-JEMDS** 9, no. 30 (July 27, 2020): 2158–63. <https://doi.org/10.14260/jemds/2020/470>.

17) Naqvi, Waqar M., and Arti Sahu. “Paradigmatic Shift in the Education System in a Time of COVID 19.” **JOURNAL OF EVOLUTION OF MEDICAL AND DENTAL SCIENCES-JEMDS** 9, no. 27 (July 6, 2020): 1974–76. <https://doi.org/10.14260/jemds/2020/430>.

18) Wanjari, A. K., Ayush Dubey, Sourav Chaturvedi, and Sunil Kumar. “Young COVID 19 Presenting as Fatal Subarachnoid Hemorrhage: Association or Chance?” **MEDICAL SCIENCE** 24, no. 104 (August 2020): 2712–15.