

Original Research Article

Evaluation of the Effect of Date Palm [*Phoenix dactylifera*] Fruit Extract on Methotrexate-Induced Reproductive Toxicity in Male Rats

ABSTRACT

Background: *Phoenix dactylifera* L. in the *Palmae* family (*Arecaceae*) is commonly known as Date palm. Its fruit is popularly consumed as food and also used as herbal remedy as a fertility enhancing properties in males.

Aim: The present study was designed to explore the effect of *P. dactylifera* fruit extract (PDFE) on methotrexate (MTX)-induced reproductive toxicity in male rat models.

Study Design: An experimental study which lasted for 19 days.

Place and Duration of Study: Department of Medical Laboratory Sciences and Animal House, College of Medicine, University of Nigeria, Enugu Campus, between April 2019 and November 2019.

Methodology: Sixteen (16) rats were divided into four groups (n=4) namely: Normal control (NC), MTX control, MTX+200mg/kg PDFE and MTX+200mg/kg PDFE. PDFE was administered by oral gavage, once daily, for 10 days. MTX injection (20mg/kg i.p.) was administered to rats in the three test groups on the fifth day. All the rats were sacrificed on Day 11 and the testes and epididymides of all rats were excised and histologically processed for light microscopical examination. Caudal epididymal sperm concentration was also determined.

Results: MTX induced a marked depletion and degeneration of spermatogenic series in the testicular tissues of MTX-control rats whereas PDFE treatment offered some cyto-architectural preservation in a dose-dependent manner. Similarly, a decreased number of spermatozoa within the lumen of epididymal tubules was observed with MTX treatment compared to the normal control and PDFE-treated rats. Treatment with PDFE caused a slight improvement in caudal epididymal sperm concentration although not statistically significant ($p>0.05$) when compared with the controls.

Conclusion: Data from the present study has revealed that oral treatment with *P. dactylifera* fruit extracts ameliorates the deleterious effects of methotrexate-induced reproductive toxicity in rats.

Comment [MOU1]: 400 mg/kg PDFE

Keywords: *Phoenix dactylifera*, methotrexate, reproductive toxicity, testis, epididymis, caudal sperm concentration.

1. INTRODUCTION

Methotrexate (MTX) is a folic acid antagonist and has a wide use for the treatment of malignant tumors and some non-neoplastic diseases. The mechanism of action of MTX is mediated through the inhibition of folic acid metabolism thereby resulting to cellular folate deficiency and subsequent death of the cells [1]. Although the use of MTX has been employed in the treatment of certain cancer types, it however induces profound side effects including acute organ toxicity [2,3]. Previous studies involving animals have used MTX to induce testicular damage, reduce number of sperm cells and damage sperm [4,5].

Oxidative stress plays a major role in testicular damage caused by the use of MTX due to generation of free oxygen radicals [6] and this invariably leads to the disruption the testicular microanatomical structure and germ cells [7]. Consequently, compounds with antioxidant properties have been reported to protect the testicular tissue from deleterious effects of MTX-induced oxidative stress [4,8].

Date palm (*Phoenix dactylifera*), (family: Arecaceae) is majorly grown for its edible sweet fruit. It is grown in South Asia, Middle East and Africa having naturalized in the subtropical and tropical parts of the world. The fruit contains high concentrations of phenolic compounds such as flavonoids and anthocyanins as well as other phytoconstituents [9]. Previous researchers have documented its antioxidant, sex hormone modulating, gastroprotective, nephroprotective, hepatoprotective, anticancer, anti-inflammatory and antimicrobial effects [10,11].

In Nigeria, there is a growing interest in the use of date palm fruits for the enhancement of male fertility and good preservation of the gonads. However, there is paucity of scientific data describing the protective effect of date palm fruits against MTX-induced reproductive toxicity in male rats. Hence it is pertinent to explore on a readily available, natural and cheap plant product which could serve as a supplementation to protect the reproductive organs of males undergoing chemotherapy with MTX. The present study, therefore, was carried out to investigate the effects of date palm fruit extract against methotrexate-induced injury on the testes and epididymis of albino rats.

2. MATERIAL AND METHODS

2.1 Drugs and Chemical

Ham's F-10 fluid was purchased from SIGMA® (Sigma –Aldrich®, St. Louis USA). Methotrexate (Ebewe Pharma®, Unterach, Austria) was purchased from a local Pharmaceutical store. All other reagents and chemicals were of analytical grade.

2.2 Procurement of Plant Material

Samples of the date palm fruits [*Phoenix dactylifera*] were purchased from Ogbete Main Market in Enugu metropolis, Enugu State, Nigeria. An expert at the herbarium section of the Department of Plant Science and Biotechnology, University of Nigeria, Nsukka, authenticated the specimen. The date fruits were split manually to separate the fruit from the seeds and then air-dried under shade for one week. The acquired flesh of the fruits was finely-grinded using a gasoline-powered grinding machine and eventually stored in an air-tight container.

2.3 Preparation of Crude Aqueous Extract

Two hundred (200) grams of the powdered plant sample was extracted by soaking in 2000mls of cold distilled water. The mixture was homogenized for about 5 min using a wooden stirrer and left for 24 hours. Thereafter, with the aid of a muslin cloth, the homogenate was filtered to obtain a resultant filtrate which was evaporated under vacuum for concentration, transferred into a leak-proof container labelled as PDFE (*Phoenix dactylifera* Fruit Extract) and eventually stored in the refrigerator at 2 – 8 °C until needed.

2.4 Laboratory Animals

Sixteen (16) adult male albino Wistar rats (weighing between 110 – 130g) of approximately 3 months old were used. The animals were procured from the Animal House of the College of Veterinary Medicine, University of Nigeria, Nsukka, Enugu State, Nigeria. Animal housing was at the Animal facility of the Department of Anatomy, Faculty of Basic Medical Sciences, College of Medicine, University of Nigeria, Enugu Campus. The rats were kept in clean wire-mesh cages and the facility was under standard environmental conditions of temperature ($25\pm 2^{\circ}\text{C}$) and light (12 h light/dark cycle). The rats were adequately fed with commercially available rat chow and clean water *ad libitum*. They were allowed to acclimatize for one week before the commencement of the studies.

2.5 Experimental Protocol

The rats were randomly divided into four groups (A – D) (n = 4) namely: normal control, MTX-control, MTX+200mg/kg PDFE and MTX+400mg/kg PDFE respectively. Rats in groups C and D received 200mg/kg and 400mg/kg body weight of PDFE, respectively, once daily via oral gavage for 11 days (Days 1 - 11). MTX was dissolved in physiological saline and an intraperitoneal dose of 20mg/kg body weight was administered to rats in groups B – D once on Day 5. Rats in group A received no treatment and thus served as the normal control.

Comment [MOU2]: Citation?

2.6 Epididymal Sperm Concentration

The animals were sacrificed on Day 12 under diethyl ether anaesthesia at 24hrs after the last administration. The two cauda epididymides (left and right) were excised; several incisions (1mm) were made in one of the cauda epididymis which was suspended in 1ml of Ham's F- 10 solution (Sigma Aldrich). After 10 minutes of incubation at 37°C , the haemocytometer method was employed for the determination of sperm concentration [12]. Testes of all the rats were also excised, and together with the other cauda epididymis from each animal, were preserved and processed for histological studies for light microscopical examination.

2.7 Histopathological Studies

The testes and epididymides were placed in tissue cassettes and fixed in 10% formal saline prior to further histological processing using the Automatic Tissue Processor. The tissues were later embedded in paraffin wax and sectioned with the Rotary Microtome (Heitz 150, Cambridge model) at 3 - 5 μm thickness. The routine staining technique (Hematoxylin and Eosin) for the demonstration of general tissue morphology was used to stain the sections for light microscopical examination as previously described (13). The Olympus Binocular microscope with in-built lighting system was used to examine the sections and their photomicrographs were taken using an AmScope eyepiece microscope-digital-camera.

Comment [MOU3]: Hematoxylin

2.8 Statistical Analysis

Data obtained from the caudal epididymal sperm concentration were expressed, where appropriate, as mean \pm S.E.M. of four rats per group. The Statistical Package for Social Sciences [SPSS] software (SPSS, Chicago, IL; version 23.0) was employed for statistical analysis. Data were subjected to one-way analysis of variance (ANOVA), followed by students' t-test to determine the differences among the groups. Value of $p < 0.05$ was the level to be considered statistically significant.

3. RESULTS AND DISCUSSION

Comment [MOU4]: No comparison with previous study

The present study evaluated the effect of treatment with extract of *P. dactylifera* on methotrexate-induced reproductive toxicity. On the testis histology of the normal control rats, histoarchitectural features consistent with normal tissues were observed (Figure 1a). However, treatment with MTX only, caused degeneration and depletion of spermatogenic series in the seminiferous tubules of treated rats (Figure 1b). There is marked evidence of incomplete spermatogenesis which is revealed by absence of mature germ cells within most of the seminiferous tubular lumens. This finding is consistent with previous reports which demonstrated the adverse effects of MTX on testicular tissue [4,5]. Testicular structure and germ cell damage resulting from MTX use is mostly attributed to generation of reactive oxygen species leading to oxidative stress [6].

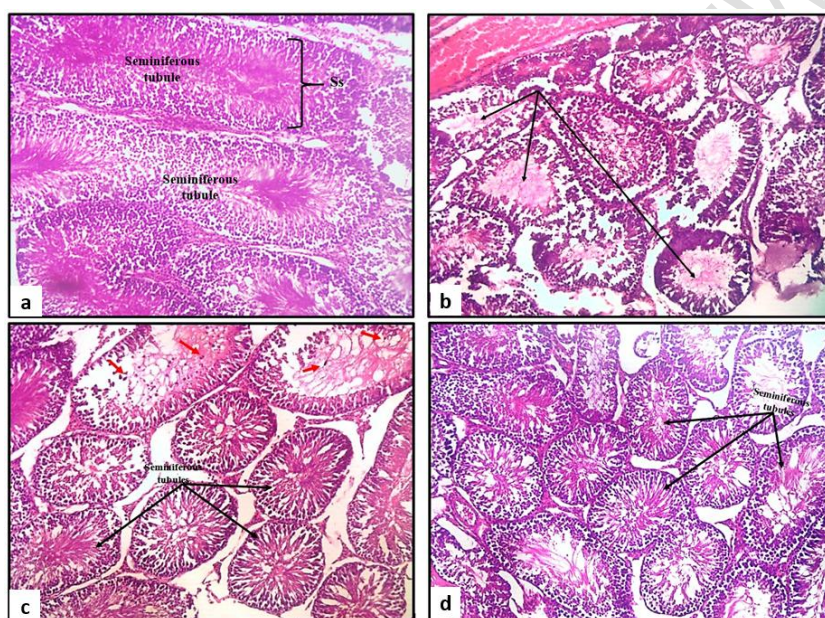


Fig. 1: Photomicrographs of Testis sections from normal control [a], MTX-Control [b] and MTX+200mg/kg PDFE (c) and MTX+400mg/kg PDFE [d] -treated rats [Stain: H&E; Mag.: x400]. **a:** Normal histomorphology of the seminiferous tubular epithelium and interstitium is observed. Spermatogenic series (ss) show varying stages of sperm development in the tubules (arrows). **b:** degeneration and depletion of spermatogenic series. Marked evidence of incomplete spermatogenesis is revealed by absence of mature germ cells within most of the seminiferous tubular lumens (arrows). **c:** The general features reveal moderate preservation of the tissue. However, presence of immature sperm cells (red arrows) within the lumen of few seminiferous tubules is noted. **d:** There is evidence of marked tissue preservation from damage exerted by MTX as most seminiferous tubules reveal presence of normal cells in spermatogenic series.

The histopathological findings on the caudal epididymis (Figure 2) are consistent with the results from epididymal sperm concentration as shown in Table 1.

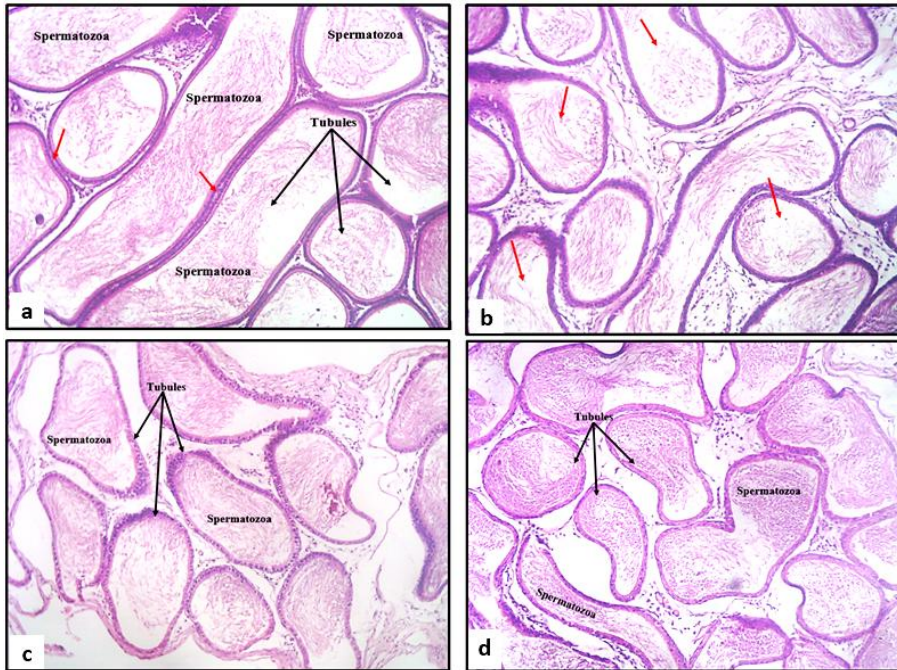


Fig. 2: Photomicrographs of Epididymis sections from normal control [a], MTX-Control [b], MTX+200mg/kg PDFE (c) and MTX+400mg/kg PDFE [d] -treated rats [Stain: H&E; Mag.: x400]. **a:** Normal histoarchitecture is observed. The tubules lined by columnar epithelium (red arrows) appear normal. **b:** Section reveals decreased number of spermatozoa within the epididymal tubular lumen (arrows) when compared with normal control. **c:** Preserved tissue structure and increased number of spermatozoa are observed when compared to MTX-control. **d:** General features appear normal and increased number of sperm cells is observed.

Normal histoarchitecture of the tissues is observed in the control and treatment groups (Figure 2a – 2d), however, mild changes are observed in the numbers of spermatozoa within the lumen of the epididymal tubules. A slight decrease is observed in the MTX-treated group (Figure 2b), whereas a somewhat increase in normally dispersed clumps of spermatozoa is noted upon PDFE-treatments (Figures 2c and 2d). Although these changes were not statistically significant from the results of the caudal epididymal spermatozoa concentrations (Table 1), the pattern of changes observed is suggestive of the ameliorative effect of the extract against MTX-effects. Perhaps the plausible reason for the non-significant effect is due to the short duration of the present study (11 days), as it is known that the spermatogenic cycle in albino rats takes up to 48 – 52 days [20] for a testicular effect to be fully reflected on the caudal epididymis.

Table 1: Effects of *Phoenix dactylifera* fruit extract on caudal epididymal sperm concentration of albino rats with Methotrexate-induced testicular damage.

Treatments	Caudal Epididymal Sperm Concentration (x10 ⁶ /ml)
Vehicle (Control)	89.50±9.71
MTX-Control	76.75±10.96
200mg/kg PDFE	98.50±12.55
400mg/kg PDFE	101.25±7.97
F-ratio	1.119
Sig.	0.380 (p>0.05)

Data expressed as mean ± SEM; n=4. Level of statistical significance is set at $p < 0.05$ when compared to the control group.

MTX= Methotrexate; PDFE = Phoenix dactylifera Fruit Extract

4. CONCLUSION

Findings from the present study revealed that methotrexate exerts testicular toxicity. However, the fruit extract of *P. dactylifera* possesses ameliorative potential in preservation of the testicular tissue architecture and restoration of spermatozoa concentration against the effects of methotrexate. The gonadoprotective effect of the extract may be further explored for its potential use in maintaining testicular histoarchitectural integrity. More so, further isolation of the bioactive principle(s) responsible for the observed effects and their possible mode of action may be established.

ETHICAL APPROVAL

All authors hereby declare that "Principles of laboratory animal care" (NIH publication No. 85-23, revised 1985) were followed, as well as specific national laws where applicable. All experiments have been examined and approved by the appropriate Institutional ethics committee. Animal housing and handling protocols were performed in strict accordance to guidelines describing the use of rats for research.

COMPETING INTERESTS DISCLAIMER:

Authors have declared that no competing interests exist. The products used for this research are commonly and predominantly use products in our area of research and country. There is absolutely no conflict of interest between the authors and producers of the products because we do not intend to use these products as an avenue for any litigation but for the advancement of knowledge. Also, the research was not funded by the producing company rather it was funded by personal efforts of the authors.

REFERENCES

1. Felemban, SG, Aldubayan MA, Alhowail AH, Almami IS. Vitamin B17 ameliorates methotrexate-induced reproductive toxicity, oxidative stress, and testicular injury in

- male rats. *Oxidative Medicine and Cellular Longevity*. 2020. <https://doi.org/10.1155/2020/4372719>
2. Gaies, E., Jebabli, N., Trabelsi, S., Salouage, I., Charfi, R., Lakhali, M., & Klouz, A. (2012). Methotrexate side effects: review article. *J Drug Metab Toxicol*. 2012;3(4): 1-5. <https://doi.org/10.4172/2157-7609.1000125>
 3. Tousson E, Zaki ZT, Abu-Shaeir WA, and Hassan H. Methotrexate-induced hepatic and renal toxicity: role of L-carnitine in treatment. *Biomed Biotechnol*. 2014;2:85–92.
 4. Vardi N, Parlakpınar H, Ates B, Cetin A, and Otlu A. Antiapoptotic and antioxidant effects of β -carotene against methotrexate-induced testicular injury. *Fertility and Sterility*. 2009;92(6):2028–33. <https://doi.org/10.1016/j.fertnstert.2008.09.015>
 5. Padmanabhan S, Tripathi DN, Vikram A, Ramarao P, and Jena GB. Methotrexate-induced cytotoxicity and genotoxicity in germ cells of mice: intervention of folic and folic acid. *Mutation Research*. 2009;673(1):43–52. <https://doi.org/10.1016/j.mrgentox.2008.11.011>
 6. Daggulli M, Dede O, Utangac MM, Bodakci MN, Hatipoglu NK, Penbegul N, *et al*. Protective effects of carvedilol against methotrexate-induced testicular toxicity in rats. *International Journal of Clinical and Experimental medicine*. 2014;7(12):5511.
 7. Ateşşahin A, Karahan I, Türk G, Gür S, Yılmaz S, Çeribaşı AO. Protective role of lycopene on cisplatin-induced changes in sperm characteristics, testicular damage and oxidative stress in rats. *Reproductive Toxicology*. 2006;21(1):42 – 47. <https://doi.org/10.1016/j.reprotox.2005.05.003>
 8. Koc F, Erişgin Z, Tekelioğlu Y, and Takir S. The effect of beta glucan on MTX induced testicular damage in rats. *Biotechnic & Histochemistry*. 2018;93(1):70-5.
 9. Al-Daihan S and Bhat RS. Antibacterial activities of extracts of leaf, fruit, seed and bark of *Phoenix dactylifera*. *African Journal of Biotechnology*. 2012;11(42):10021-5. <https://doi.org/10.5897/AJB11.4309>
 10. Baliga MS, Baliga BRV, Kandathil SM, Bhat HP and Vayalil PK. A review of the chemistry and pharmacology of the date fruits (*Phoenix dactylifera* L.). *Food research international*. 2011;44(7):1812-22. <https://doi.org/10.1016/j.foodres.2010.07.004>
 11. Petrovska BB. Historical review of medicinal plants' usage. *Pharmacognosy Reviews*. 2012;6(11):1-5. <https://doi.org/10.4103/0973-7847.95849>
 12. World Health Organization. WHO Laboratory Manual for Examination of Human Semen and Sperm-Cervical Mucus Interaction, 4th edn. New York: Cambridge University Press. 1999.
 13. Baker FJ, Silverton RE and Palister CJ. Introduction to Medical Laboratory Technology. Butterworth-Heinemann, 6th Edition. 1985
 14. El-Neweshy MS, El-Maddawy ZK and El-Sayed YS. Therapeutic effects of date palm (*Phoenix dactylifera* L.) pollen extract on cadmium-induced testicular toxicity. *Andrologia*. 2013;45(6):369-78. <https://doi.org/10.1111/and.12025>
 15. Jahromi AR, Rasooli R, Kamali Y, Ahmadi N and Sattari E. Short-term effects of date palm extract (*Phoenix dactylifera*) on ischemia/reperfusion injury induced by testicular torsion/detorsion in rats. *Pharmacognosy research*. 2017;9(1):69. <https://doi.org/10.4103/0974-8490.199769>
 16. Bahmanpour S, Talaei T, Vojdani Z, Panjehshahin MR, Poostpasand A, Zareei S, and Ghaemini M. Effects of *Phoenix dactylifera* pollen on sperm parameters and reproductive system of adult male rats. *Iranian Journal of Medical Sciences*. 2006;31(6):208-12.
 17. El-Kott AF, Sayed AA, El-Sayad SM, and Abdourahman MH. The pharmaceutical effect of date palm fruit extract (*Phoenix dactylifera* L.) against amitraz-induced infertility in male rats. *Advances in Life Science and Technology*. 2014;22(3):14-26.
 18. Zineb G, Boukouada M, Djeridane A, Saidi M, and Yousfi M. Screening of antioxidant activity and phenolic compounds of various date palm (*Phoenix*

dactylifera) fruits from Algeria. Mediterranean Journal of Nutrition and Metabolism, 2012;5(2):119-26. <https://doi.org/10.1007/s12349-011-0082-7>

<https://doi.org/10.3233/s12349-011-0082-7>

19. Ansa AA, Akpere O, Imasuen JA. Semen traits, testicular morphometry and histopathology of cadmium-exposed rabbit bucks administered methanolic extract of *Phoenix dactylifera* fruit. Acta Scientiarum. Animal Sciences. 2017; 39:207–15. <https://doi.org/10.4025/actascianimsci.v39i2.32858>
20. Johnson MH, Everitt BJ. Essential reproduction, 4th edn. Oxford: Blackwell Science, 1995; p. 264.

UNDER PEER REVIEW