

Original Research Article

Molecular characterization of fall armyworm (*Spodoptera frugiperda*, J.E. Smith) feeding on rice (*Oryza sativa* L.) in Tamil Nadu

ABSTRACT

The fall armyworm (FAW), *Spodoptera frugiperda* (J.E. Smith) (Lepidoptera: Noctuidae), is an invasive insect pest of India native to the Western Hemisphere. The pest damages more than 350 plant species. FAW is genetically divided into two strains viz. corn (C) strain which feeds mostly on maize, sorghum, etc. and the other is a rice (R) strain that prefers rice and other small grasses. In the present study, fall armyworm samples were collected from rice crop in two different places of Tamil Nadu, India during 2019-20 and strain identity was confirmed. Polymerase Chain Reaction (PCR)-Restriction Fragment Length Polymorphism (RFLP) profile of mitochondrial *cytochrome oxidase* subunit I fragment exhibited the presence of both 'R' and 'C' strains of FAW in rice crop. Nucleotide variations were observed from PBS, TNAU isolate (ON247930) at five places and two places in Killikulam isolate (OM491244).

Keywords: Fall armyworm; Rice; Molecular characterization; Strain; PCR-RFLP; Phylogenetic analysis

1. INTRODUCTION

Rice (*Oryza sativa* L.) is one of the world's most significant grains and staple foods. More than 60 per cent of the world's population is reliant on it to meet their nutritional needs [1]. It is grown on over one-fourth of the total agricultural area in India, feeding more than half of the country's population [2]. In Tamil Nadu, it is the predominant food grain crop grown in an area of 20,36,239 hectares with a production of 68,81,725 tonnes. Thanjavur district is the largest rice growing district, covering 2.14 lakh hectares, followed by Tiruvarur (1.95 lakh hectares), Tiruvannamalai (1.71 lakh hectares), and Ramanathapuram (1.34 lakh hectares) [3].

More than hundred insect species attack rice plants, with twenty of them capable of causing economic damage. The most common insect pests include stem borers, gall midge, plant hoppers, leaf hoppers, rice hispa, gundhi bug, and case worm [4]. Recently, the maize fall armyworm (FAW), *Spodoptera frugiperda*, J.E. Smith was found infesting rice crop in two different places of Tamil Nadu. In fact, FAW is a recently introduced pest in India and very quickly it has invaded variety of crops like sorghum, pearl millet, finger millet, barnyard millet, sugarcane, turmeric, fodder grasses, ginger, fodder crops etc. [5,6,7].

FAW races can only be differentiated molecularly, but not morphologically [8,9]. The corn-designated 'C' strain, feeds mostly on maize, sorghum, cotton, and pulses, and the rice-designated 'R' strain, prefers rice and other grass species, are two genetically distinct races of FAW [10,11]. Mitochondrial *COI* markers are commonly used to identify and assess population structure in insects, and they are known for maternal inheritance, high copy number, and conservative nature, among other things [12]. The use of restriction enzymes in PCR-RFLP analysis of the mitochondrial *COI* gene aids in the identification of fall armyworm strains [13,14]. [Moreover, The study of breeds, using molecular techniques is very important and useful for their characterizing \(Mohammadi et al., 2009; Masoudzadeh, et al., 2020; Mohammadabadi, 2021\). Conservation of](#)

Formatted: Indent: First line: 0", Space After: 0 pt, Line spacing: single, Don't adjust space between Latin and Asian text, Don't adjust space between Asian text and numbers

Comment [a1]: It is better to explain about importance and applications of genetic diversity and conservation in animal breeding. For this you can use added sentences and references:

Formatted: Font: (Default) Arial, 12 pt, Font color: Text 1

genetic diversity in species requires the proper performance of conservation superiorities and sustainable handling plans that should be based on universal information on population structures, including genetic diversity resources among and between breeds (Mohammadabadi et al., 2010; Mohammadabadi et al., 2018). Genetic diversity is an essential element for genetic improvement, preserving populations, evolution and adapting to variable environmental situations (Askari et al., 2010; Mohammadabadi et al., 2021). On the other hands, determination of gene polymorphism is important in organism breeding (Mohammadabadi et al., 2017; Gooki et al., 2019) in order to define their genotypes and their associations with productive, reproductive and economic traits (Nassiry et al., 2005; Ghasemi et al., 2010; Gholamhoseini et al., 2018). In this context, the present study was done to identify FAW strain(s) that feed on rice through molecular approaches.

Formatted: Font: (Default) Arial, 12 pt, Font color: Text 1

Formatted: Font: (Default) Arial, 12 pt, Font color: Text 1

2. MATERIALS AND METHODS

2.1. Insect collection and preservation

FAW larvae (5 per location) were collected from rice crop in two distinct locations, as shown in table 1. Individually collected insects were kept in microfuge tubes and stored at -20 °C until DNA extraction.

2.2. DNA preparation and quantification

The CTAB method (cetyl trimethylammonium bromide) was used to isolate the genomic DNA of FAW [15]. DNA was isolated from larvae's prolegs. Tissues were homogenised completely in 200 μ L of extraction buffer (100 mM Tris-HCl, pH 8.0, 1.4M NaCl, 0.02M EDTA, 2% CTAB, and 0.2 per cent mercaptoethanol), then kept at 65°C for an hour before centrifugation at 12,000 rpm for 15 minutes. An equal volume of chloroform:isoamyl alcohol (24:1) was added to the supernatant and centrifuged at 10,000 rpm for 10 minutes to separate the phases. The top aqueous phase was transferred to a 1.5 μ - μ L sterile microfuge tube and the process was repeated. To precipitate the DNA, 200 μ L of ice-cold isopropanol was added to the aqueous phase, which was then kept at -20 °C overnight. After centrifugation at 10,000 rpm for 10

Comment [a2]: μ L is correct. Please correct throughout the text

minutes at 4 °C, the DNA pellet was recovered. The DNA pellet was air dried after being washed twice with 100 % ethanol. The pellets were suspended in 30-50 µl of 1X TE buffer and kept at -20 °C until PCR analysis. Nanodrop Spectrophotometer (Genova, USA) and agarose gel electrophoresis (%???) were used to examine the extracted DNA quantitatively and qualitatively.

Comment [a3]: Please identify percent

2.3. PCR analysis

DNA extracted from FAW larvae was PCR amplified. DNA samples were diluted in 1X TE buffer to obtain a 50-100 ng/µl working solution (working aliquot). Bioserve Biotechnologies Private Limited, Hyderabad, India, produced the primers. *MtCOI* region was amplified using the primer pairs JM 76F (5' GAGCTGAATTAGG(G/A)ACTCCAGG 3') and JM 77R (5' ATCACCTCC(A/T)CCTGCAGGATC 3'), producing a 568-bp fragment. All segments were PCR amplified with a 25 µl reaction mixture (12.5 µl of 2X Thermo Scientific PCR Master Mix, 1 µl forward primer, 1 µl reverse primer, 9.5 µl nuclease free water, and 1 µl DNA template) in an Eppendorf thermocycler with an ambient thermo-cycling profile of 94 °C (1 min), followed by 33 cycles of 92 °C (45 s), 56 °C (45 s) 72 °C (1 min) and a final extension of 72 °C for 3 min. On a two per cent PCR grade agarose horizontal gel, PCR amplified products were fractionated and documented using the Bio-Rad Gel Doc XR imaging equipment.

Comment [a4]: Please add accession number for used primers

Comment [a5]: Please identify that did you design primers or took from reference?

2.4. RFLP analysis

To determine strain identity, PCR products of the *COI* region were digested with *SacI* restriction enzyme purchased from Thermo Fisher Scientific and New England Biolabs, respectively. A reaction mixture including 10 µl PCR product, 2 µl buffer, 1 µl

enzyme and 17 µl nuclease free water was prepared, incubated at 37 °C for 2 hours, fractionated on a 2% agarose gel, and documented.

Comment [a6]: It is better to add concentration of used materials

2.5. Sequencing and GenBank submissions

The unpurified PCR amplified product (20 µl) was shipped to Bioserve Biotechnologies India Pvt Ltd. in Hyderabad, Telangana, India, for double-pass DNA sequencing. The raw sequence was aligned and edited using Bioedit software (version 7.25). A dendrogram was produced by aligning the partial nucleotide sequences of *MtCOI* from *S. frugiperda* using Clustal W, and a phylogenetic tree was constructed using MEGA11 (version 11.0). A bootstrap analysis with 1000 replications utilizing the neighbour joining method was done to determine the evolutionary distance between the sequences [16].

3. RESULTS

3.1. Strain identity analysis using PCR-RFLP

The PCR analysis results revealed the expected fragment size of about ~568 bp from *mtCOI* region was amplified in all the tested samples (Fig. 1A). Restriction enzymatic analysis of *mtCOI* segments exposed that, *SacI* enzyme cut the DNA into ~413 bp and ~155 bp fragments in Rice (R) strain whereas, DNA remain uncut (~568 bp) in Corn (C) strain (Fig. 1B). Out of ten, eight samples showed 'R' strain identity and two samples collected from Paddy Breeding Station, TNAU, Coimbatore, India assumed 'C' strain identity. But interestingly, our FAW samples (two numbers) showed 'C' strain identity.

3.2. Nucleotide variations

Nucleotide variations were found at different places in the *mtCOI* region of FAW populations feeding on rice (Fig. 2). Highest variation in the nucleotides was observed from PBS, TNAU isolate (ON247930) at five places viz. 108 ('A' is replaced by 'T'), 159 ('T' is replaced by 'C'), 390 ('C' is replaced by 'T'), 464 ('C' is replaced by 'T'), 470 ('T' is replaced by 'C') and 501 ('T' is replaced by 'C'). The Killikulam isolate (OM491244) showed nucleotide variations in two places viz. 112 ('A' is replaced by 'T') and 515 ('A' is replaced by 'T').

3.3. Phylogenetic tree analysis

The data matrix included 29 sequences from *MtCOI* genome of two taxa: one taxon includes 28 FAW sequences, of them 13 across the globe and 15 from India including our test sequences (Fig. 3). The taxon, *S. exigua* served as an out group. The phylogenetic tree built using maximum likelihood (ML) following Tamura 3-parameter model showed that, the tree was divided into two main branches in that, first main branch was further divided into two clades. First clade contained majority of FAW sequences was clustered and closely related to *S. frugiperda*. Our collection (one sample) from Killikulam, India (OM491244) was grouped in this branch. The second clade clearly showed it was diverged from other sequences due to substitution of nucleotides in our PBS, TNAU, India (ON247930) isolate of FAW.

4. DISCUSSION

Genetic polymorphisms are currently the most extensively used and most reliable way for identifying races within species. Mitochondrial haplotypes are generally used

with those defined by polymorphisms in the *cytochrome oxidase* subunit I gene (*COI*) the best characterized [17].

According to mtCOI analysis, FAW feeding on rice from two different locations in Tamil Nadu were found to have both the 'R' and 'C' strains. Eight of the ten samples were found to be 'R' strain, with two being 'C' strain. Studies by Nagoshi and Meager [17] implied that, the rice strain populations of FAW prefer to feed on rice, grass species *etc.* and corn strain populations prefer corn and sorghum for feeding. Opposing results to our findings were also known to occur. Irrespective of host plants, FAW reported on maize, sweet corn and sorghum assumed 'R' strain identity with minimal genetic diversity exhibiting no host/ location specific variations [18].

In our study, nucleotide variations were observed in both the test sequences. Studies by Swamy *et al.* [18] revealed nucleotide variations at four (254, 305, 540, 588) and 14 positions (72, 117, 171, 207, 253, 258, 305, 489, 540, 564, 570, 589, 600, 634) when compared with the NCBI accessions U72977 and U72974 for 'C' strain of FAW collected from maize, sweet corn and sorghum crops in India.

In a dendrogram, the FAW population feeding on sugarcane from Anakapalle formed a distinct clade with 99.75 percent similarity to the Mexico population with the 'C' strain identification [19]. Chormule *et al.* [6] reported that the FAW is found in sugarcane crops in Kolapur, Maharashtra, and that it is of the 'C' strain with close resemblance to USA FAW populations (U72974, U72975 and U72976). Our isolate from Killikulam, India (OM491244) was grouped in major sequences with 'R' strain identity whereas,

TNAU, India isolate (ON247930) totally diverged from these sequences and grouped in the 'C' strain sequences.

5. CONCLUSION

In India, the 'R' strain has colonized maize, sorghum, sweet corn, rice and a variety of other crops, while the 'C' strain is also adapting to sugarcane, finger millet, pearl millet and now in rice. As a result, both strains have migrated to India, where they have colonized a wide range of crops. Hybrid strains (R/C or C/R) could form from the interbreeding populations of both strains, feeding on a wide range of hosts and causing damage to a variety of agricultural crops.

DISCLAIMER

The products used for this research are commonly and predominantly used products in our area of research and country. There is absolutely no conflict of interest between the authors and producers of the products because we do not intend to use these products as an avenue for any litigation but for the advancement of knowledge. Also, the research was not funded by the producing company rather it was funded by personal efforts of the authors.

COMPETING INTERESTS DISCLAIMER:

Authors have declared that no competing interests exist. The products used for this research are commonly and predominantly use products in our area of research and country. There is absolutely no conflict of interest between the authors and producers of the products because we do not intend to use these products as an

avenue for any litigation but for the advancement of knowledge. Also, the research was not funded by the producing company rather it was funded by personal efforts of the authors.

REFERENCES

1. Joshi R, Singh B, Shukla A. Evaluation of elite rice genotypes for physiological and yield attributes under aerobic and irrigated conditions in tarai areas of western Himalayan region. *Current Plant Biology*. 2018; 13: 45-52.
2. Seni A, Naik BS. Influence of different abiotic factors on the incidence of major insect pests of rice (*Oryza sativa* L.). *Journal of Agrometeorology*. 2018; 20(3): 256-258.
3. Season and Crop Report. Season and Crop Report of Tamil Nadu 2020-21. FASLI-1430. Department of Economics and Statistics, Chennai – 6. <https://www.tn.gov.in/crop/>.
4. Pathak MD, Khan ZR. 1994. *Insect Pests of Rice*, IRRI, Manila, Philippines, pp. 89.
5. ICAR-IIMR Annual Report. 2019. ICAR-Indian Institute of Maize Research Punjab Agricultural University Campus, Ludhiana - 141 004.
6. Chormule A, Shejawal N, Nagol J, Brown ME. First report of the fall armyworm, *Spodoptera frugiperda* (J. E. Smith) (Lepidoptera, Noctuidae) on sugarcane and other crops from Maharashtra, India. *J. Entomol. Zool. Stud*. 2019; 7: 114–117.

7. CABI. 2020. *Spodoptera frugiperda* (fall armyworm). Invasive Species Compendium. Retrieved from <https://www.cabi.org/isc/datasheet/29810>.

8. Askari N, Baghizadeh A, Mohammadabadi MR 2010 Study of genetic diversity in four populations of Raeini cashmere goat using ISSR markers. *Modern Genetics Journal* 5 (2), 49-56.
9. Ghasemi M, Baghizadeh A, Abadi MRM 2010 Determination of genetic polymorphism in Kerman Holstein and Jersey cattle population using ISSR markers. *Australian Journal of Basic and Applied Sciences* 4 (12), 5758-5760
10. Gholamhoseini Gooki F, Mohammadabadi MR, Asadi Fozi M 2018. Polymorphism of the growth hormone gene and its effect on production and reproduction traits in goat. *Iranian Journal of Applied Animal Science* 8 (4), 653-659.
11. Gooki FG, Mohammadabadi M, Fozi MA, Soflaei M 2019 Association of Biometric Traits with Growth Hormone Gene Diversity in Raini Cashmere Goats. *Walailak Journal of Science and Technology (WJST)* 16 (7), 499-508
12. Masoudzadeh, S.H., Mohammadabadi, M., Khezri, A., Stavetska, R.V., Oleshko, V.P., Babenko, O.I., Yemets, Z., Kalashnik, O.M., 2020b. Effects of diets with different levels of fennel (*Foeniculum vulgare*) seed powder on DLK1 gene expression in brain, adipose tissue, femur muscle and rumen of Kermani lambs. *Small Ruminant Research* 193, e106276.
13. Mohammadabadi MR, Esfandyarpoor E, Mousapour A 2017 Using Inter Simple Sequence Repeat Multi-Loci Markers for Studying Genetic Diversity in Kermani Sheep. *Journal of Research and Development* 5 (2), 154
14. Mohammadabadi MR, Kord M, Nazari M 2018 Studying expression of leptin gene in different tissues of Kermani Sheep using Real Time PCR. *Journal of Agricultural Biotechnology* 10 (3), 111-122.
15. Mohammadabadi MR, Nikbakhti M, Mirzaee HR, Shandi A, Saghi DA, Romanov MN, Moiseyeva IG 2010. Genetic variability in three native Iranian chicken populations of the Khorasan province based on microsatellite markers. *Russian journal of genetics* 46 (4), 505-509.
16. Mohammadabadi, M., Bordbar, F., Jensen, J., Du, M., Guo, W., 2021. Key genes regulating skeletal muscle development and growth in farm animals. *Animals* 11, e835.
17. Mohammadabadi, M.R., 2021. Tissue-specific mRNA expression profile of ESR2 gene in goat. *Agricultural Biotechnology Journal* 12, 169-184
18. Mohammadi A, Nassiry MR, Mosafer J, Mohammadabadi MR, 2009. Distribution of BoLA-DRB3 allelic frequencies and identification of a new allele in the Iranian cattle breed Sistani (*Bos indicus*). *Russian journal of genetics* 45 (2), 198-202.
- 7-19. Nassiry MR, Shahroodi FE, Mosafer J, Mohammadi A, Manshad E, Ghazanfari S, Mohammad Abadi MR, Sulimova GE 2005. Analysis and frequency of bovine lymphocyte antigen (BoLA-DRB3) alleles in Iranian Holstein cattle. *Russian Journal of Genetics* 41 (6), 664-668.
- 8-20. Prowell DP, McMichael M, Silvain JF. Multilocus genetic analysis of host

use, introgression, and speciation in host strains of fall armyworm (Lepidoptera: Noctuidae). *Ann. Entomol. Soc. Am.*, 2004; 97(5): 1034-1044.

9-21. Nagoshi RN, Silvie P, Meagher RL, Lopez J, Machado V. Identification and comparison of fall armyworm (Lepidoptera: Noctuidae) host strains in Brazil, Texas, and Florida. *Ann. Entomol. Soc. Am.*, 2007: 100(3): 394-402.

10-22. Pashley DP. Quantitative genetics, development, and physiological adaptation in host strains of fall armyworm. *Evol.* 1998. 42: 93-102.

Formatted: Left, Line spacing: single

Formatted: Font: (Default) +Headings CS, 10 pt, Font color: Black, Pattern: Clear

- 41-23. Nagoshi RN, Meagher RL. Using intron sequence comparisons in the triose-phosphate isomerase gene to study the divergence of the fall armyworm host strains. *Insect Mol. Biol.* 2016; 25: 324–337. <https://doi.org/10.1111/imb.12223>.
- 42-24. Mauro DS, Gower DJ, Zardoya R, Wilkinson MA. Hotspot of gene order rearrangement by tandem duplication and random loss in the vertebrate mitochondrial genome. *Mol. Biol. Evol.* 2006; 23: 227.
- 43-25. Nagoshi RN, Meagher R. FR tandem-repeat sequence in (Lepidoptera: Noctuidae) host strains. *Ann. Entomol. Soc. Am.*, 2003; 96: 329–335.
- 44-26. Nagoshi RN, Goergen G, Tounou KA. Analysis of strain distribution, migratory potential, and invasion history of fall armyworm populations in northern Sub-Saharan Africa. *Sci. Rep.* 2018; 8: 3710. <https://doi.org/10.1038/s41598-018-21954-1>.
- 45-27. Doyle JJ, Doyle JL. Isolation of plant DNA from fresh tissue. *Focus.* 1990; 12: 13-
- 46-28. Tamura K, Stecher G, Kumar S. MEGA 11: Molecular Evolutionary Genetics Analysis Version 11. *Mol. Biol. Evol.* 2021. <https://doi.org/10.1093/molbev/msab120>.
- 47-29. Nagoshi RN, Meagher RL. Behavior and distribution of the two fall armyworm host strains in Florida. *Fla. Entomol.* 2004; 87(4): 440–9.
- 48-30. Swamy HMM, Asokan R, Kalleshwaraswamy CM, Sharanabasappa, Prasad YGM, Maruthi MS, Shashank PR. Prevalence of “R” strain and molecular

diversity of fall army worm *Spodoptera frugiperda* (J.E. Smith) (Lepidoptera: Noctuidae) in India. Indian J. Entomol. 2018; 80: 544.

49-31. Bhavani B, Sekhar CV, Varma KP, Lakshmi BM, Jamuna P, Swapna B. Morphological and molecular identification of an invasive insect pest, fall armyworm, *Spodoptera frugiperda* occurring on sugarcane in Andhra Pradesh, India. J. Entomol. Zool. Stud. 2019; 7(4): 12-18.

UNDER PEER REVIEW

Table 1. Details on the FAW collected from rice in different locations of Tamil Nadu

S. No.	Location	Life stage	Sample size	Date of collection	GPS information	NCBI Accession number(s) received
1.	Paddy Breeding Station, TNAU, Coimbatore, India	Larval	05	20.10.2020	Latitude: 11.01°N Longitude: 76.94°E	ON247930
2.	Agricultural College and Research Institute, Killikulam, Vallanad, Tuticorin, India	Larval	05	24.09.2020	Latitude: 08.71°N Longitude: 77.86°E	OM491244

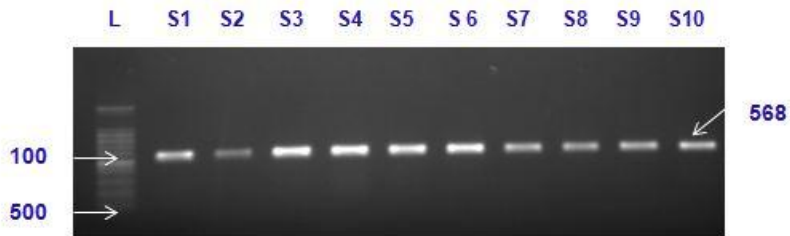


Fig. 1A. Agarose gel displaying PCR products of FAW collected from rice

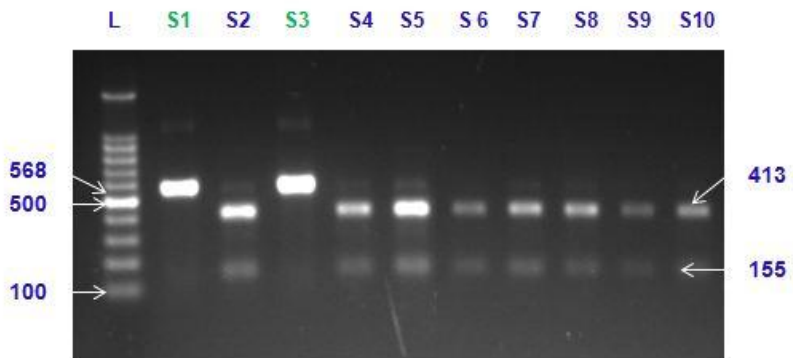


Fig. 1B. Strain specific RFLPs from the mitochondrial *COI* gene *SacI* digestion

Lane L– Ladder (100 bp); Lanes S1-S5 – PBS, TNAU, Coimbatore, India; Lanes S6-

S10 – AC&RI, Killikulam, Thoothukudi, India

108 112

```

OM491244_Rice_Killikulam_Thoothukudi_India -----GCITTTATTATAATTTTTTTTATAGTTATACCATTTAATTGGA 120
ON247930_Rice_TNAU_Coimbatore_India ATGTGAACAGCCATGCTTTTATTATAATTTTTTTTATAGTTATACCATTTAATTGGA 120
MF605970_Sugarcane_Coimbatore_India ATGTGAACAGCCATGCTTTTATTATAATTTTTTTTATAGTTATACCATTTAATTGGA 120
MH753326_Maize_Shivamogga_India ATGTGAACAGCCATGCTTTTATTATAATTTTTTTTATAGTTATACCATTTAATTGGA 120
MH704433_Maize-Chikballapur-India ATGTGAACAGCCATGCTTTTATTATAATTTTTTTTATAGTTATACCATTTAATTGGA 120
MH88153_Maize_Hassan_India ATGTGAACAGCCATGCTTTTATTATAATTTTTTTTATAGTTATACCATTTAATTGGA 120
.....

OM491244_Rice_Killikulam_Thoothukudi_India GGATTGGAAATTGACTTGACCTTTAATATTAGGAGCCCTGATATAGCTTTCCCAAGT 180
ON247930_Rice_TNAU_Coimbatore_India GGATTGGAAATTGACTTGACCTTTAATATTAGGAGCCCTGATATAGCTTTCCCAAGT 180
MF605970_Sugarcane_Coimbatore_India GGATTGGAAATTGACTTGACCTTTAATATTAGGAGCCCTGATATAGCTTTCCCAAGT 180
MH753326_Maize_Shivamogga_India GGATTGGAAATTGACTTGACCTTTAATATTAGGAGCCCTGATATAGCTTTCCCAAGT 180
MH704433_Maize-Chikballapur-India GGATTGGAAATTGACTTGACCTTTAATATTAGGAGCCCTGATATAGCTTTCCCAAGT 180
MH88153_Maize_Hassan_India GGATTGGAAATTGACTTGACCTTTAATATTAGGAGCCCTGATATAGCTTTCCCAAGT 180
.....

OM491244_Rice_Killikulam_Thoothukudi_India TCTATTTTAGGAGCTATTACTTTATTACACTATTATTAAATACGATTAAATAAITTA 420
ON247930_Rice_TNAU_Coimbatore_India TCTATTTTAGGAGCTATTACTTTATTACACTATTATTAAATACGATTAAATAAITTA 420
MF605970_Sugarcane_Coimbatore_India TCTATTTTAGGAGCTATTACTTTATTACACTATTATTAAATACGATTAAATAAITTA 420
MH753326_Maize_Shivamogga_India TCTATTTTAGGAGCTATTACTTTATTACACTATTATTAAATACGATTAAATAAITTA 420
MH704433_Maize-Chikballapur-India TCTATTTTAGGAGCTATTACTTTATTACACTATTATTAAATACGATTAAATAAITTA 420
MH88153_Maize_Hassan_India TCTATTTTAGGAGCTATTACTTTATTACACTATTATTAAATACGATTAAATAAITTA 420
.....

OM491244_Rice_Killikulam_Thoothukudi_India TCATTTGATCAAATACCTTTTATTATTAGGCTGTAGGTATTACCCATTTTATTAITTA 480
ON247930_Rice_TNAU_Coimbatore_India TCATTTGATCAAATACCTTTTATTATTAGGCTGTAGGTATTACCCATTTTATTAITTA 480
MF605970_Sugarcane_Coimbatore_India TCATTTGATCAAATACCTTTTATTATTAGGCTGTAGGTATTACCCATTTTATTAITTA 480
MH753326_Maize_Shivamogga_India TCATTTGATCAAATACCTTTTATTATTAGGCTGTAGGTATTACCCATTTTATTAITTA 480
MH704433_Maize-Chikballapur-India TCATTTGATCAAATACCTTTTATTATTAGGCTGTAGGTATTACCCATTTTATTAITTA 480
MH88153_Maize_Hassan_India TCATTTGATCAAATACCTTTTATTATTAGGCTGTAGGTATTACCCATTTTATTAITTA 480
.....

OM491244_Rice_Killikulam_Thoothukudi_India TTAICTTTACCTGTTTTAGCGGAGCTATTACTAATTTACTTACTGATCGAAATCTAAT 529
ON247930_Rice_TNAU_Coimbatore_India TTAICTTTACCTGTTTTAGCGGAGCTATTACTAATTTACTTACTGATCGAAA----- 529
MF605970_Sugarcane_Coimbatore_India TTAICTTTACCTGTTTTAGCGGAGCTATTACTAATTTACTTACTGATC----- 529
MH753326_Maize_Shivamogga_India TTAICTTTACCTGTTTTAGCGGAGCTATTACTAATTTACTTACTGATC----- 529
MH704433_Maize-Chikballapur-India TTAICTTTACCTGTTTTAGCGGAGCTATTACTAATTTACTTACTGATC----- 529
MH88153_Maize_Hassan_India TTAICTTTACCTGTTTTAGCGGAGCTATTACTAATTTACTTACTGATC----- 529
.....

```

Fig.2. Nucleotide variations in the test and other FAW sequences

UNDER PREP

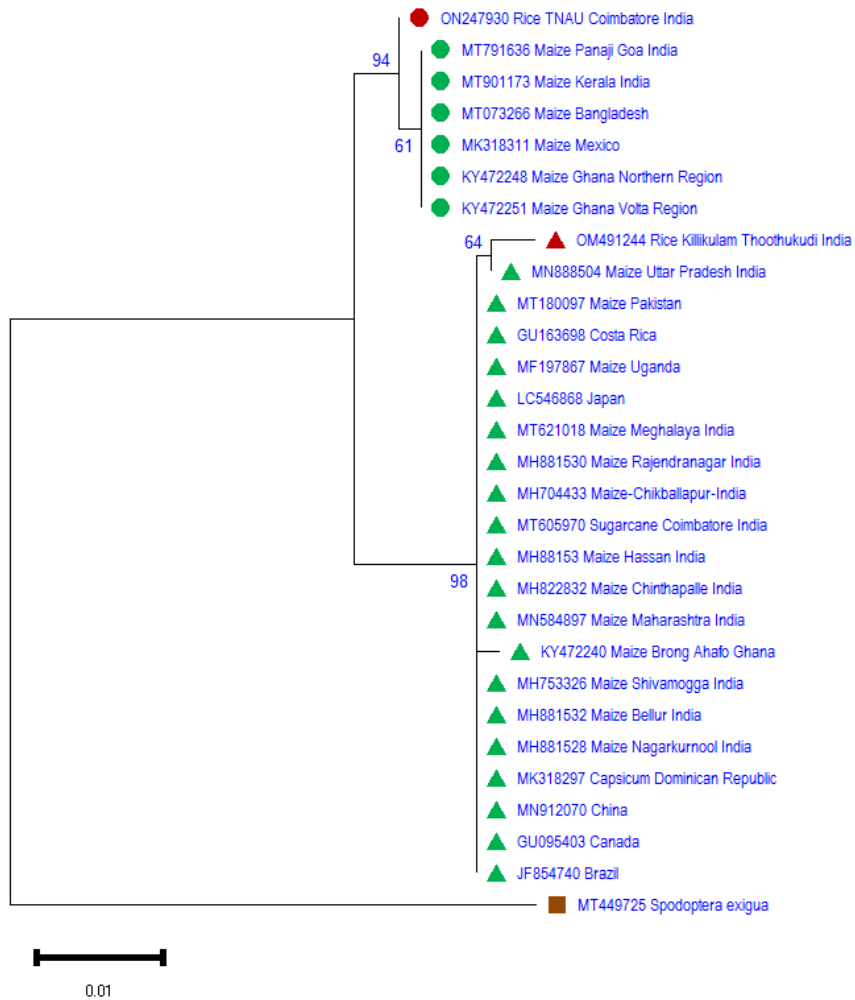


Fig. 3. Phylogenetic tree showing the relationships among the fall armyworm strains. Bootstrap support is indicated on the branches.