

Short Research Article

SPATIAL BEHAVIOR OF SOIL ERODABILITY IN THE LA VILLA RIVER BASIN, PANAMA

ABSTRACTS

Introduction: Soil erodability is an important factor in understanding the erosion that takes place in a territory. This is a parameter that can behave erratically in small spaces, but that describes a trend in larger spaces.

Aim: Determine the K factor of soil erodibility in the La Villa-Panama river basin.

Place and Duration of Study: La Villa River Basin-Azuero Peninsula, Panama. 2010-2012.

Methodology: 98 points of the La Villa river watershed were sampled. Factor K was calculated using the adaptation to the soil-erodability nomogram. The percentage of organic matter, structure class (in the field), permeability (combination permeameter) and the percentages of sand and silt plus very fine sand (Bouyoucos method) were determined. To obtain the most complete information possible on the distribution of erodability, a superficial interpolation of the point values corresponding to the soil samples taken was carried out. The software used was Arcview 3.3 and the Spatial Analyst extension. The interpolation method was IDW (Inverse Distance Weighted). The erodability values were categorized into seven intervals in such a way that it was possible to observe the differences on the map.

Results: The erodibility values were influenced by the content of organic matter and coarse particles (percentage of sand and silt + very fine sand) of the soil. In the province of Herrera, 86% of the land surface and 76% in the province of Los Santos presents susceptibility to erosion in the ranges of 0.032 to 0.043 Ton * ha * hr * ha⁻¹ * MJ * mm⁻¹.

Conclusion: The results indicate that 80% of the soils of the La Villa river basin present a moderately high erodibility factor, with the highest values being registered in the upper middle zone.

INTRODUCTION

Soil Erodibility or K Factor is an index of the Universal Soil Loss Equation that describes the susceptibility or vulnerability (Röder et al, 2006) of the soil to be eroded. Likewise, the K factor represents soil erosion per unit of pluvial erosion index, determined in plots with a slope of 9% and lengths of 22.1 m (Suárez, 2001). The knowledge of the behavior of the K factor in specific sites or geographic regions could be a guide or determinant of the measures (policies) leading to give it.

Appropriate use of the soil when the K factor is compared with other factors that reflect the risk of the soil to be eroded.

Comment [NMAA1]: Abstract

Comment [NMAA2]: Factor K

Comment [NMAA3]: percentages of sand, silt and very fine sand

Comment [NMAA4]: The dominance of these fractions largely favor various mechanical processes.

Comment [NMAA5]: Add reference.

Comment [NMAA6]: You need to highlight the equation as described with Wischmeier and Smith as the base reference

Comment [NMAA7]: comparison between appropriate land use, the K factor and other factors that come into play in erosive fact can provide more detailed data on the extent of soil erosion risk.

The most widely known method for calculating the soil erodibility factor is the soil-erodibility nomogram (Wishmeier et al, 1971). This method was used in this research to make specific determinations; and the interpolations within the La Villa River Basin were obtained by means of the inverse distance method making use of Geographic Information Systems (GIS) tools.

Comment [NMAA8]: This title is not indicated in the list of references

Comment [NMAA9]: Weighted

Comment [NMAA10]: You must insert the location map that includes all samples selected in the study basin.

MATERIALS AND METHODS

98 points were sampled throughout the geography of the La Villa river basin, trying as far as possible to do so according to a 4 km by 4 km reticular mesh at a density of approximately one sample every 16 km².

Comment [NMAA11]: Does this grid cutting frequency at a step of 4 km correspond to the limits of geological layers and surface formations as bedrock?

The K factor for each sampled point was calculated using the adaptation (Foster et al, 1981) to the soil - erodability nomogram (Wishmeier et al., 1971) as shown in Figure 1. For this, it was necessary to determine the percentages of organic matter (Wakley Black method), structure classes (in the field), permeability (combination permeameter) and the percentages of sand and silt plus very fine sand (Bouyoucos method).

Comment [NMAA12]: km²

Comment [NMAA13]: This title is not indicated in the list of references

Comment [NMAA14]: full reference !

According to this nomogram, the erodability factor is obtained using the value of the % silt + very fine sand in the sample and by drawing a horizontal line it is intercepted with the corresponding % sand curve and then another line is drawn vertically and intercepts the % Organic Matter curve. From this point of interception, by drawing another horizontal line to the right it intercepts with the curve of the type of soil structure and then vertically and downwards intercept the type of permeability. Finally, from this same point of interception, a horizontal line is drawn to determine the soil erodibility factor.

Comment [NMAA15]: on the vertical axis

Comment [NMAA16]: (Fig.1)

To obtain the most complete information possible on the distribution of erodability, a superficial interpolation of the point values corresponding to the soil samples taken was carried out. The software used for this was Arview 3.3 and the Spatial Analyst extension. In this way, images were generated in raster format with a spatial resolution of 15 m. The interpolation method used was IDW (Inverse Distance Weighted) (Watson and Phillip, 1985), according to which the "weight" of each station at a given point decreases compared to the others with distance.

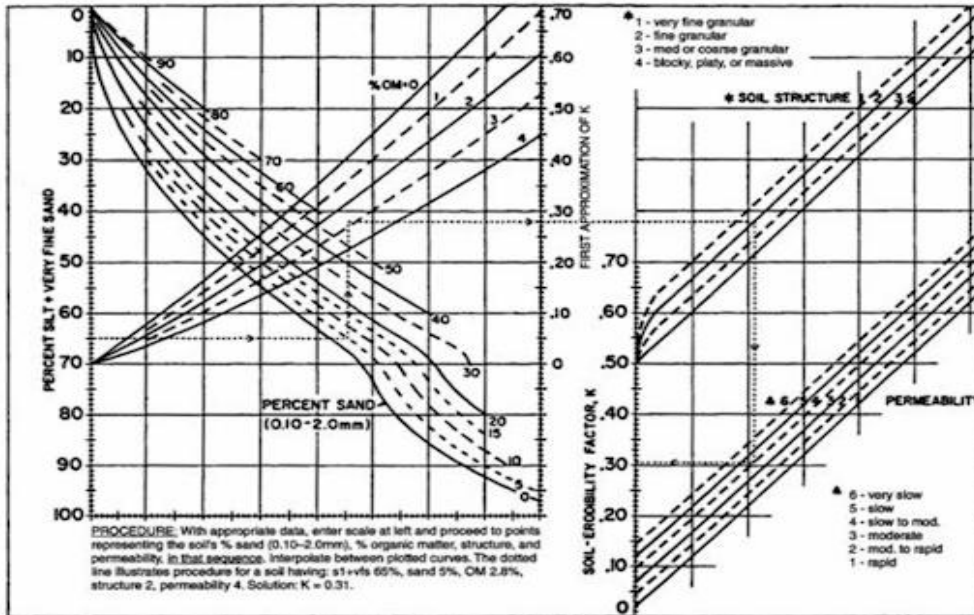


Figure 1. Soil nomogram - erodability. Foster et al, 1981.

The erodability values were categorized into seven intervals so that the intervals allowed to observe the differences on the map.

RESULTS AND DISCUSSION

Relative frequency of the erodability factor

In total, 98 soil samples were taken from the La Villa river basin using a density of one sample per 16 km². The laboratory analyzes and the calculations carried out allowed determining that the mean of the erodability factors in the Basin was 0.037 Ton*ha*hr* ha⁻¹*MJ*mm⁻¹ and the standard deviation was 0.009 Ton*ha*hr*ha⁻¹*MJ*mm⁻¹, with extremes of 0.012 as a minimum and 0.056 as a maximum. The most frequent values were included in the intervals between 0.026 and 0.043 as can be seen in Figure 2.

Comment [NMAA17]: You must add Wishmeier and Smith

Comment [NMAA18]: This title is not indicated in the list of references

Comment [NMAA19]: basin

Comment [NMAA20]: How to explain this distribution by comparison with the lithological map and the slope classes ?

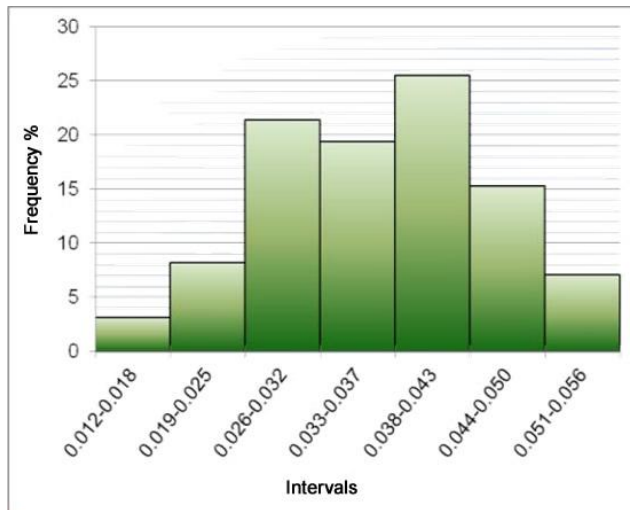


Figure 2: Frequency of existence of the K factor for the study area by interval.

Distribution of the erodability factor in the La Villa river basin

The interpolations carried out by means of the inverse distance, produced the distribution that is presented in Figure 3. It illustrates the values of soil erodibility by means of an increase in the color tone. The erodibility values obtained are higher towards the southern region of the study area and the lowest values are more frequent towards the northeast zone (discharge zone) and towards the flat regions of the basin. This trend is apparently influenced by the organic matter content and the content of coarse particles (% sand and silt + very fine sand) of the soil.

Comment [NMAA21]: The interpretation of the result and the explanation of the explanatory factors must be based on the vegetation map and agricultural practices (fallow) to have an idea on the rate of renewal of organic matter in the soil and which seems to be a major factor in the consistency of the soil and its good cohesion. So you have to add the vegetation map or NDVI index map.

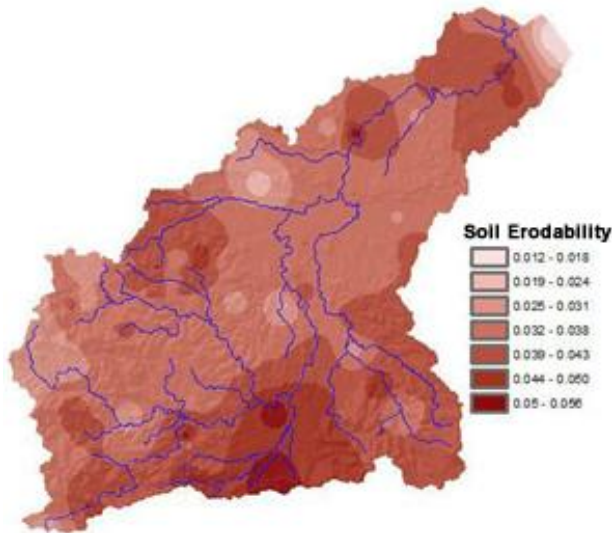


Figure 3: Distribution of erodability in the La Villa river basin. Panama.

Comment [NMAA22]: A toponymy must be added to the map.

Figure 4 shows that in the province of Herrera, the largest land area, 86%, presents soils with susceptibility to erosion in the ranges of 0.032 to 0.043 $\text{Ton} \cdot \text{ha} \cdot \text{hr} \cdot \text{ha}^{-1} \cdot \text{MJ} \cdot \text{mm}^{-1}$ and corresponds to the districts of Los Pozos and Las Minas followed by Pesé and Chitré. The highest values found are located in the Los Pozos district, in the upper-middle region of the La Villa River Basin.

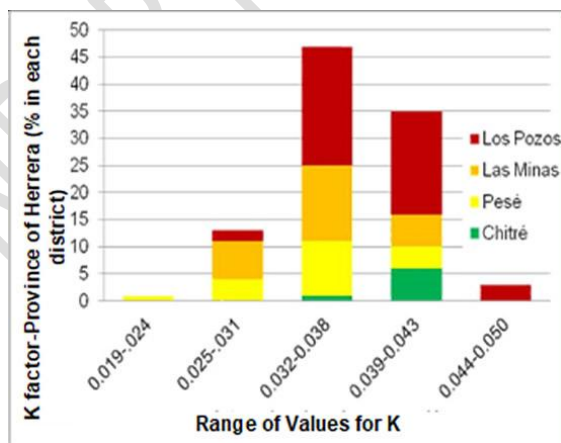


Figure 4. Percentage of surface area of the La Villa river basin within the province of Herrera according to District and erodability factor.

Similarly, for the province of Los Santos, it was possible to determine that the largest surface area corresponds to soils with susceptibilities in the interval from 0.032 to 0.043 $\text{Ton}\cdot\text{ha}\cdot\text{hr}\cdot\text{ha}^{-1}\cdot\text{MJ}\cdot\text{mm}^{-1}$, according to the sample (Figure 5).

The percentage of surface, in this case corresponds to 76%, based on the surface of the province of Los Santos coinciding with the La Villa River Basin; and the district that registers the highest susceptibility is Macaracas followed by Los Santos. The highest values found were in the Macaracas district.

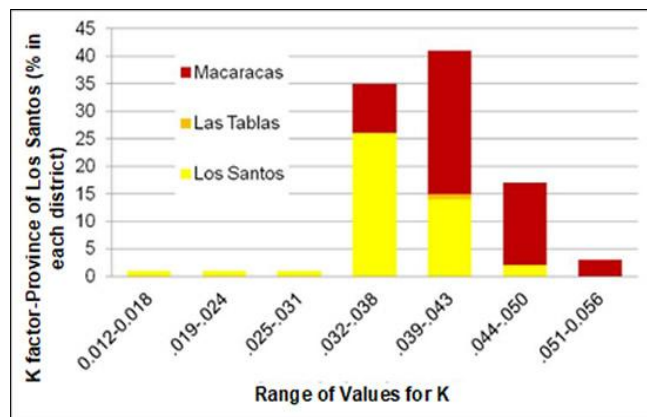


Figure 5. Percentage of surface area of the La Villa river basin within the province of Los Santos according to District and erodability factor.

CONCLUSION

The results obtained indicate that 80% of the soils of the La Villa river basin have a moderately high erodability factor and that the highest values are registered towards the upper-middle part of it.

REFERENCIAS

Andrade, O., Kappas, M., Erasmi, S. (2010). Evaluation of erosion risk in the municipality of Torres, Lara state (Venezuela) based on GIS. *Interciencia*, Vol. 35 No. 5. 348-356

CORINE-CEC (1992). CORINE soil erosion risk and important land resources. An assessment to evaluate and map the distribution of land quality and soil erosion risk. Office for official publications of the European Communities. EUR 13233. Luxembourg.

Comment [NMAA23]: References

Comment [NMAA24]: This reference has not been indicated in the text !

Comment [NMAA25]: This reference has not been indicated in the text !

Kirkby, M. J. and Morgan, R.P.C. (1984). Soil erosion. Editorial Limusa, México D.F. 375 pp.

Morgan, R. P. C. (1997). Soil erosion and conservation. Ed. Mundi-Press. Madrid.

Comment [NMAA26]: These references are not indicated in the text

Röder, J., Villavicencio, G.R. and Zarazúa, V.P. (2006). Application of the Universal Soil Loss Equation "USLE" in GIS to estimate the potential risk of erosion in the protected area "Sierra de Quila". In: XVII Week of Scientific Research. University Center for Biological and Agricultural Sciences. University of Guadalajara, Guadalajara, Jalisco, Mexico. pp. 156-162.

Suárez D, J. (2001). Erosion control in tropical areas. Santander Industrial University Editions. 555 pp.

Watson, D.F., and Philip, G.M. (1985). A Refinement of Inverse Distance Weighted Interpolation, Geo-Processing, 2: 315-327.

Wischmeier, W. H. (1959). A rainfall erosion index for a Universal Soil-Loss equation. Soil Science Society Proceedings 23: 246-249.

Comment [NMAA27]: This reference has not been indicated in the text !

UNDER PEER REVIEW