

Original Research Article

Formatted: Numbering: Continuous

Conflict of Land Use Types over Geomorphological Space of Anambra State, Southeastern Nigeria: The Analyses and Predictions

Abstract

Geomorphological constraints have led to the scarcity of lands in most urban and newly urbanizing areas by reducing land that would have been available for urban expansion. The study area is Anambra State; the data used for this study include primary and secondary data. A mixed-method approach was applied in the analysis and presentation of data, and ArcGIS 10.2 GIS software was also used for the processing of the satellite imageries to determine the rate of land use cover change (LUCC) in the State. Conclusively, people for long are not living in the active flood plains of Idemili-Niger area and other agriculturally endowed lands, but presently, due to increase in population and pressure on land, people have now started buying and sand filling lands in these areas without considering the danger their actions may cause if there is soil failure. Mixed land use type is visibly observed, especially urban related land use like commercial and other socio-cultural land uses. The land use cover change (LUCC) analysis shows that there is a reduction from 53.26% to 28.75% of vegetated land; reduction from 26.48% to 25.02% of disturbed vegetation and a whopping increase of settlements to 20.51% from 4.69% respectively, within a period of thirty (30) years. Presently, Anambra State is almost attaining equilibrium in all land use types in the State and if nothing is done to check the trend, there may no longer be available space for vegetation or farmland in the State in the next thirty (30) years.

Key words: Conflict, Geomorphological Space, Geomorphological Constraints, Land use, Anambra

Comment [K1]: Abstract:

-The main aim or specific objective (s) is not clear in the abstract. The main aim must be stated clearly.

1. INTRODUCTION

Geomorphological constraints have led to the scarcity of lands in most urban and newly urbanizing areas by reducing land that would have been available for urban expansion. Thus, the benefits that could have accrued to the society socially and economically are lost. The response to this problem is the construction of multi-storey buildings, observed as seen in cities across of the world resulting in leading recently to the misusage misuse of various land spaces for purposes other than what they have been designated for the ones most suitable. The soil must possess the capacity to carry the weight of a building structure or else failure will be inevitable. This capacity is determined by the strength and structure of the underlying soil which is a geomorphological phenomenon (Ndulue, 2018).

There are geomorphological controls which limit the use of land even at the beginning of human existence that are still present today, despite man's ingenuity and advancement in technology (Ofomata, 1978; Ndulue, 2018). Some of these natural or geomorphological controls are steep slopes, wet valley floors, swampy areas, active flood plains, gully sites, rocky terrains, desert landscape, river troughs, mountains, water bodies and so onete (Umeuduji, 1988). Man in his attempt to modify and reduce these obstacles created by these controls, has ended up exposing the environment to more hazards such as flooding, erosion among others (Adinna, 2001).

Comment [K2]: Introduction:

-Authors need to create a paragraph that captures research progress, regarding the scope of this study in the study area and abroad. Here, it must be stated clearly what is known about the topic (what has been done already) elsewhere and domestically (in Nigeria or Anambra State), and what's unknown but important to be studied. This will lead readers to the objectives or main aim of the study.

Line 184-190: The contribution of this study to decision-makers, international scientific community or researchers, land use planners, strategists, local authorities and other units must be stated clearly and given some more flesh in the last paragraph.

45 Human beings based on their understanding of the environment must apply sense in placing their
46 houses, roads, markets and other facilities for easy accessibility and sustainability (Ofomata, 2001;
47 Oke, 2002). Science has provided the basis for sustainable use of resources, and its application to the
48 global environment is enormous, cutting across all fields - soil science, engineering, geology,
49 geomorphology, and agricultural science among others. Today, farmlands are suppose to be
50 scientifically assessed, mapped and designated for the best suitable use before any farming activities
51 are carried on them. Housing estates are generally established after the land has been scientifically
52 evaluated and certified for suitability (Ndulue, 2018). Population growth has led to high demand for
53 residential and commercial land use, especially in high cities creating problems for government and
54 city managers in controlling and monitoring land use activities as recommended among others to
55 ensure sanity (Akpomrere and Nymorere, 2012).

56 In order to make any useful developmental decision, adequate information on many complex yet
57 interrelated aspects are very critical. Land use and its changes over time is one of such critical
58 aspect, the developer or planner must resolve. Because of this, knowledge about land use and land
59 cover is increasingly important if planners in Nigeria seek to overcome the problem of haphazard
60 development that leads to deterioration in environmental quality, loss of prime arable lands,
61 destruction or destabilization of habitats (Olaleye, 2009). With the advances in remote sensing and
62 Geographic information system, satellite imageries have been used to understand the topography,
63 land use and other important characteristics of an area as well as its changes over time (Olaleye,
64 2009). These data/imageries provide a strong visual portrayal of recognized growth pattern and
65 dramatically convey how the progress of modern development results in profound changes to the
66 landscape.

67 There are various types of land use controls, they are identified as the primary land use
68 constraints that can limit, and in some cases preclude, development of property and they are (i) Title
69 restrictions, (ii) governmental regulations, (iii) infrastructure limits, (iv) environmental requirements,
70 (v) physical constraints and (vi) market place dynamics. Land use constraints are as a result of the
71 physical characteristic of the property in question, topographic elevation changes, soils conditions
72 (expansive, rock, Proneness to landslides), level of groundwater table among others are but a few
73 examples of physical land use constraints (Castlelyon Corporation, n.d).

74 Uncontrolled human activities have led to significant modification of the natural landscape and
75 biodiversity in the world over the years (Adefioye, 2013). Consequentially, land use and land cover
76 characteristics are continuously being degraded without adequate consideration for the future. This
77 has led to the depletion and deterioration of the rich ecosystem of various areas. The impact of
78 topography on land use ranges from minor land cover changes and soil modification, to severe
79 desertification, deforestation, erosion, and river encroachment problem. A piece of land can be put to
80 various uses, for example, farming, forestry, construction of building, wild- life etc. however, the
81 topography determines mostly the spatial pattern of land use and its changes (Solaimani et al. 2009;
82 Gobin et al. 2004

83 Man in his quest for wealth has neglected nature's providence with regard to every tract of land
84 and its suitable use. Vegetated, Crops and farmlands have been cleared for the purpose of erecting
85 building structures in the study area (Figure 1), commercial activities are hostilely taken over spaces
86 meant for residential. This paper therefore looks at the conflict of land use over geomorphological
87 space among various types of economic, social, cultural and religious activities being carried out on
88 land in Anambra State, Southeastern Nigeria.

89 ,



90
91 **Fig 1:** Vegetated, Crops and Farmland being cleared for Housing Estates in the Study Area
92 **Source:** Authors' Fieldwork, (2021)
93

94 **1.1 Conceptual Framework**

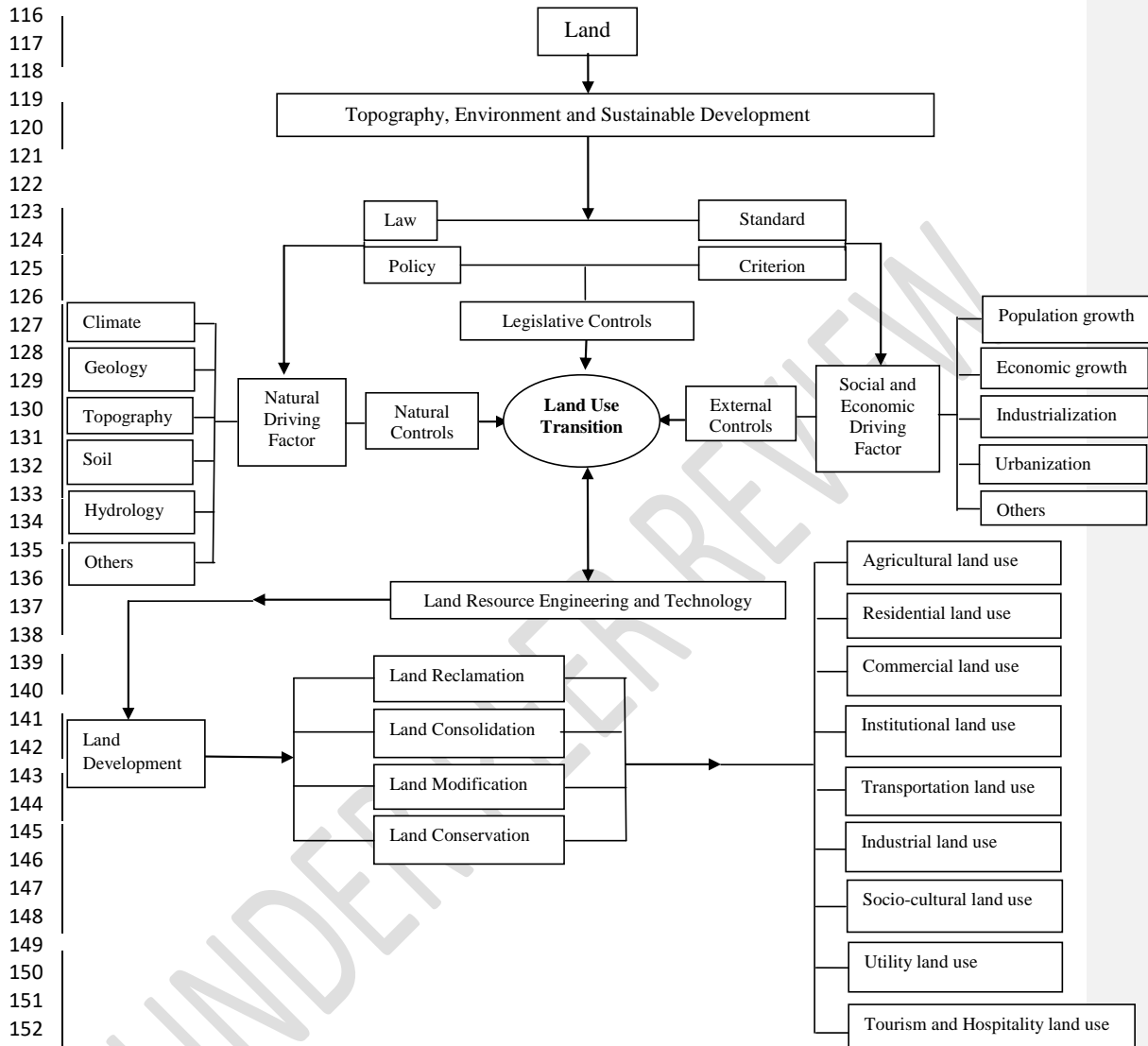
95 This study looks at landscape transition, as lands transit from initial landform to various
96 terminal uses which are studied in later times. The model adopted, applied and discussed for this
97 paper is that of Liu and Long, (2016), Modified by (Ndulue, 2018), and is presented below:
98
99

Comment [K3]: Conceptual framework:

-Which theories/concepts underline or anchor this study. They need to be integrated clearly based on the study title or scope.

-Authors could cite or refer to this latest article (Sarfo, I., Shuoben, B., Beibe, L. et al. Spatiotemporal development of land use systems, influences and climate variability in Southwestern Ghana (1970–2020. *Environ Dev Sustain* (2021). <https://doi.org/10.1007/s10668-021-01848-5>) for such linkages in concepts of LUCC to enrich the introductory/literature section and the discussion of this study.

100
101
102
103
104
105
106
107
108
109
110
111
112
113
114
115



154 **Fig 2:** Conceptual framework for dynamic mechanism of land use change transition.

155 Source: Adopted from Liu and Long, (2016); Modified by (Ndulue, 2018).

156
157 The landscape is conceptualized according to the scheme of progression advocated by the
158 German School of modern geomorphology as presented by Ofomata (2008). This concept therefore
159 preserves the land and provides a model that can help a land use planner to measure and identify the
160 sources and causes of master plan failure and occurrences of environmental hazards in any region of
161 the world. That is why it is chosen for this study. The scheme conceives of land as made up of the

162 topographic surface and the substrate on which it is founded. Because of the nature and importance
163 of land to man, the thrust of the model is based on the paradigm of environmental sustainability.

164 Four factors affect the transition of land from one use or state to another. They are the laws in
165 the area of study, the policies that are derived from the laws on the one hand and from the variables
166 and the criterion for adopting the standards on the other hand. These laws, policies, standards and
167 criteria are used by the legislature to make the laws that govern land uses at various levels and in
168 various quarters. Via these laws land use transition is governed. Land use transition is a function of
169 the physical variables that govern land use which include climate, geology, topography, soils,
170 hydrology, vegetation etc, which decide the physical fitness of land for any type of use. On the other
171 hand, the socio-economic factors exist as the socio-economic driving factors – viz population growth
172 which drives demand for land by need for food and housing; others are economic growth,
173 industrialization, urbanization and transport expansion all of which are socio-economic and can
174 result in severe land degradation and environmental hazards where the dictates of the physical
175 factors are ignored. These socio-economic driving factors are subject to internal and external
176 controls by the natives, external populations, and others operating in the locality of the study area
177 and the larger national space.

178 Land use transition is always in a state that is governed by and reflects the levels of science,
179 land resource engineering and technology. The state of the engineering science and technology is
180 reflected in the conversion and transition of the land from agriculture to any other non-agricultural
181 uses and it also determines the rate and pace of landscape conversion and degradation in any region
182 subject to control by the legal and administrative authorities which compel obedience to the laws and
183 assure environmental safety or otherwise degradation and environmental hazards.

184 Land development is done via the processes of land reclamation, land consolidation, land
185 modification and land conservation. Each of these has its part to play in the level of exposure of an
186 inhabiting population to various types of environmental hazards. Land use engineering and
187 technology also directly affects the various uses to which the land can be put, whether agricultural,
188 residential, commercial, institutional, transportation, industrial, socio-cultural, utilitarian and
189 tourism-ete, which must be carried out under the operation and land use laws and policies ensured by
190 the relevant agencies of government such that harmony on the landscape is preserved and assured.

191

192 2. MATERIALS AND METHODS

193

194 2.1 Study Area

195 Anambra State (Figures 3) has an area of 4844 km², located between Latitude 5° 45'N to 6°
196 46'N and Longitude 6° 38'E to 7° 23'E. It lies within the Koppens Af climatic region (Ayadiuno and
197 Ndulue, 2021). Mean annual temperatures are around 27°C with a mean rainfall of 1870mm per
198 year. The southwest to western corner of Anambra State is the wettest part, while the central to
199 north/northeast section is relatively a drier area (Obetta, et al, 2011; Ayadiuno and Ndulue, 2021).
200 The rainy season lasts from mid to late April to late October each year the occurrence of little dry
201 season – August Break for which the area is known. The dry season that normally starts in late
202 October started in year 2020 in December as observed by the authors. The harmattan season that
203 normally lasts from late November to February started also in year 2020 in December, may be as a
204 result of climate change.

205 The Geology of Anambra State consists of cretaceous sedimentary rocks, Shale formations
206 underlie the State and are exposed in the Mamu basin and the Anambra basin and the Niger basin
207 (Umeji, 2002). On the shale are deposits of the Eocene – Miocene consisting of the Bende-Ameke,
208 Nanka Sands, Ebenebe Sandstones, etc (Offodile, 2002; Igwe & Egbueri 2018) (Figures 4).

Comment [K4]: Line 165-166: The sentence is quite ambiguous and needs to be reconstructed for clarity.

Comment [K5]: Line 195-205: Why was Anambra State selected among other states in Nigeria? There must be justification.

209 **2.2 Research Design**

210 The design is reliance on empirical data, supported by secondary data sources. The data used
211 in this study include primary and secondary data. Primary data used were obtained from direct field
212 observation, measurements, photographs and oral interviews. Secondary data that were used include
213 images and raster files collected from United States Geological Surveys (USGS) Earth Explorer
214 imageries, Library data, online data, published and unpublished articles and books. The forecasting
215 of the possible outcome of the conflict of land use over geomorphological space was done using
216 Microsoft Excel.

217 Mixed-method approach was applied in the analysis and presentation of data for this study
218 and the results are rendered in charts, tables and maps.
219

UNDER PEER REVIEW

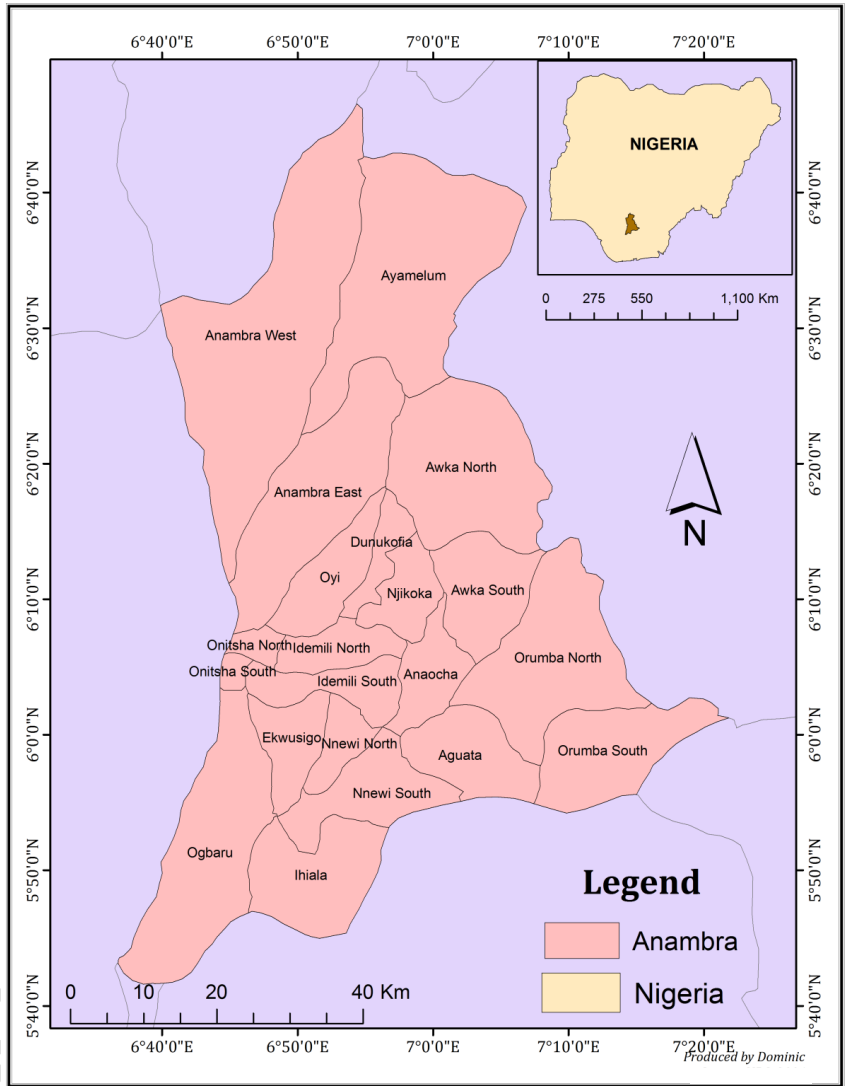


Fig 3: Anambra State

Source: DIVA GIS, Modified by the Authors, (2021)

Comment [K6]: -The horizontal and vertical grids (co-ordinates) around Figs. 3 and 4 could be reduced to just 3 or 4.

220
221
222

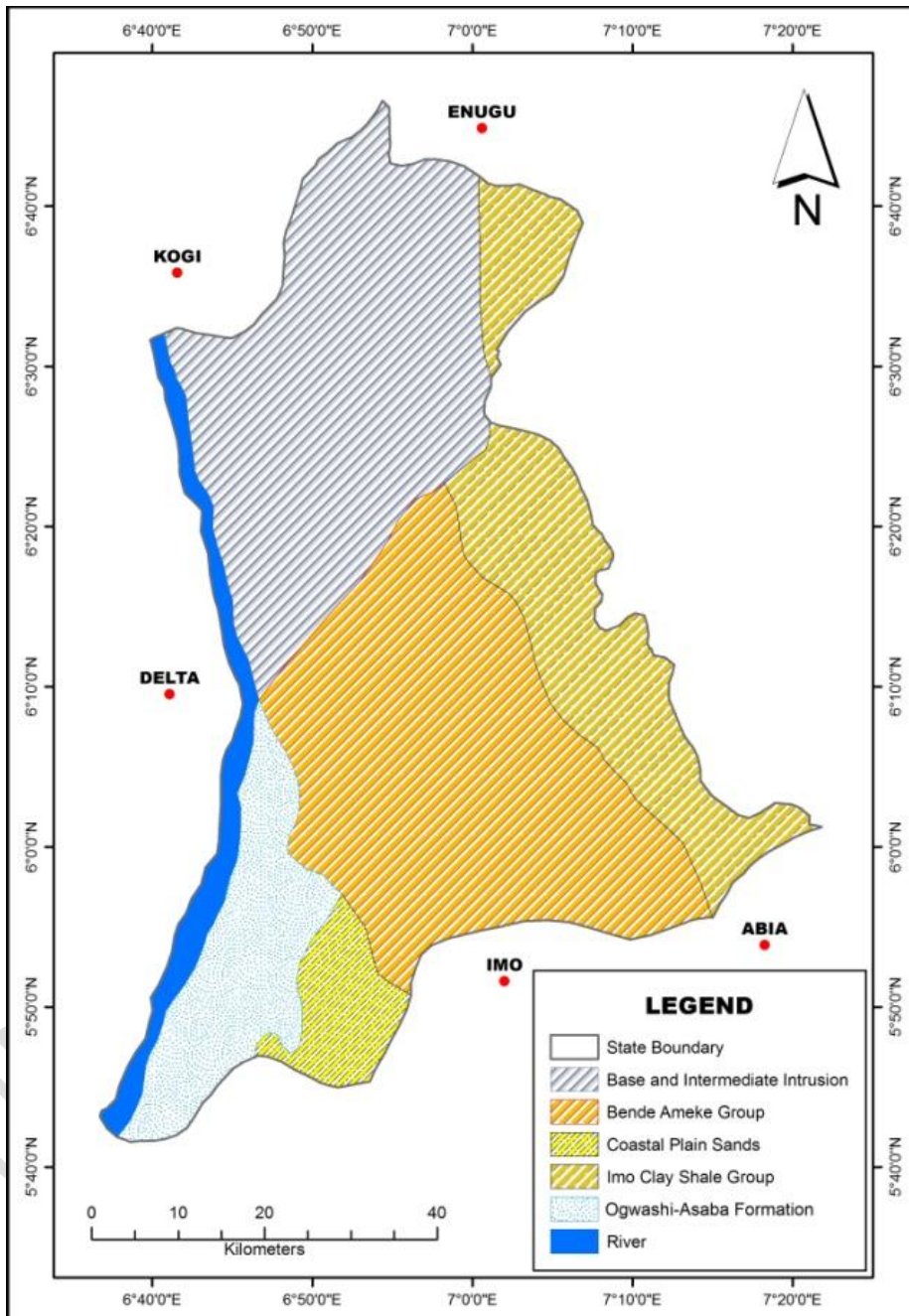


Fig 4: Geology of the Study Area

Source: USGS, Modified by the Authors, (2021)

Comment [K7]: -The horizontal and vertical grids (co-ordinates) around Figs. 3 and 4 could be reduced to just 3 or 4.

223
224
225
226

227
228
229
230
231
232
233
234
235
236
237
238
239
240

2.3 Data Collection

Data for this study was collected through primary and secondary sources. They involved the use of Global Positioning System (GPS Extrex 10) for identifying point location of areas of significance, direct field observations, interviews to obtain ~~the populace peoples~~ view and perception of land use pattern in the study area, focus group discussions to get the general knowledge of the residence of the study area with regards to the land and land use pattern. The use of satellite imageries to examine the relationship between the attributes of the land and land use change. Soil data was obtained through observation and extraction of soil specimen samples from twenty (20) randomly selected locations and were analyzed for engineering parameters. The specimen were extracted by first excavating the ground to about 0.5m of dept and a metal core was driven into the ground at the bottom of the pit using hammer and bar to extract undisturbed soil sample, while disturbed soil sample was collected using shovel after the metal core was removed from the pit (figures 5a and 5b).



241
242 **Fig 5a:** Extracting Soil Sample with Core

241
242
243

Source: Authors' Fieldwork, (2021)



Fig 5b: Arrow showing Core in the Soil

Source: Authors' Fieldwork, (2021)

2.4 Data analysis

In order to achieve the result of the objective of this study, the results of the soil analysis were subjected to statistical test using the Statistical Package for Social Sciences (SPSS) version 20. Principal Component Analysis (PCA) was carried out in order to identify the underlying factors of the soil variables in the study area. ArcGIS 10.2 soft-ware was also used for the processing of the satellite imageries to determine the rate of land use cover change in the State.

3. RESULTS ANALYSIS AND DISCUSSIONS

The soil analysis test was carried out at the Soil Science Department, of the University of Nigeria Nsukka, and the summary of the results are presented in subsequent sections. Thus:

The parameters that were tested in the soil samples are soil particle sizes - Clay, silt, fine sand and coarse sand on average are 28.06%, 11.78%, 18.07% and 32.01% respectively. The percentage of porosity (42.92%) was also determined which shows the level of infiltration or permeability in the area. The land that drains water easily is more suitable for construction and other land use purposes than the waterlogged areas. The test for Atterberg limit was also carried out to determine the liquid limit (25.86%), plastic limit (27.62%) and the plastic index (2.06%). Liquid limit implies limit at which any additional moisture will cause the soil to fail or break. Plastic limit is the level at which a tread of the soil specimen begins to break, that is losing elasticity, while plastic index is the difference between the liquid limit and plastic limit. Atterberg limit is a function of the amount of clay present in a soil sample, the more the clay content of soil the more plasticity and water retaining capacity of the soil (Ayadiuno and Ndulue, 2021). Maximum Dry Density (M.D.D) (186.4 Kg/m^3), measured in Kilogram per cubic meter (Kg/m^3) is used to determine the strength of the soil and its carrying capacity in terms of placing structures on it. Percentage Optimum/Natural Moisture Content

Comment [K8]: Line 252-253: Was accuracy assessment conducted for satellite imagery generated? Authors must state clearly how the results generated for the satellite imageries were validated.

-Were results compared to observed datasets to ensure consistency or accuracy in results generated?

-Which data type (Example: Landsat 4/5 TM/MSS, Landsat 7 ETM+ AND SO ON) was used for this? It must be stated clearly.

271 (16.09%) is the percentage level of moisture found in a soil specimen, which is the difference
272 between excess and lack of moisture in the soil. Natural Moisture Content is the volume of water
273 required to maintain Maximum Dry Density (M.D.D) during natural or mechanical compaction.
274 Percentage shrinkage level (8.98%), is the level at which the removal of water from the soil does not
275 cause the soil to shrink or compress further. It is used to determine the level at which a tract of land
276 will compress when moisture is removed. It is important especially in soils made up of mainly clay
277 soil. Percentage Void Ratio (0.36%) shows the percentage of void (space) in the soil in relation to
278 other particles that made up the soil samples. The level of void in the soil determines the level of
279 moisture, air content that is present in the soil. It also determines the level of infiltration in a tract of
280 land. Percentage California Bearing Ratio (C.B.R) (20.4%) is used to determine the strength of the
281 soil of the sub-grade in wet and dry conditions. The test for California Bearing Ratio (C.B.R) is
282 carried out in the laboratory or in the field, either on natural or compacted soil, water soaked soil or
283 dry soil samples and the results are used to determine modification measures. Slope angle which is
284 measured in degree shows the level of the steepness of the slopes in the study area and it ranged
285 from 1° to 45° , while elevation also ranged from 24m to 345m.

286 Conclusively, Anambra State geomorphological space consists of the top most accepted
287 Klingebiel, and Montgomery land use suitability class of I to V (Klingebiel, and Montgomery,
288 1962). About 80% of the State land mass is suitable for agriculture, while about 35% is suitable for
289 any engineering construction without remedial modifications. About 40% of the agricultural space
290 can also be used for other purposes like building structures upon fortification (Figure 6), as has been
291 observed at the site of second River Niger bridge road. The appreciable level of M.D.D and C.B.R of
292 186.4 Kg/m^3 and 20.4% respectively, together with the position of the State as the gate way to the
293 entire Eastern zone and her commercial bouyance status attracts high population, hence the rapidity
294 in urban expansion that is being experience in the State.

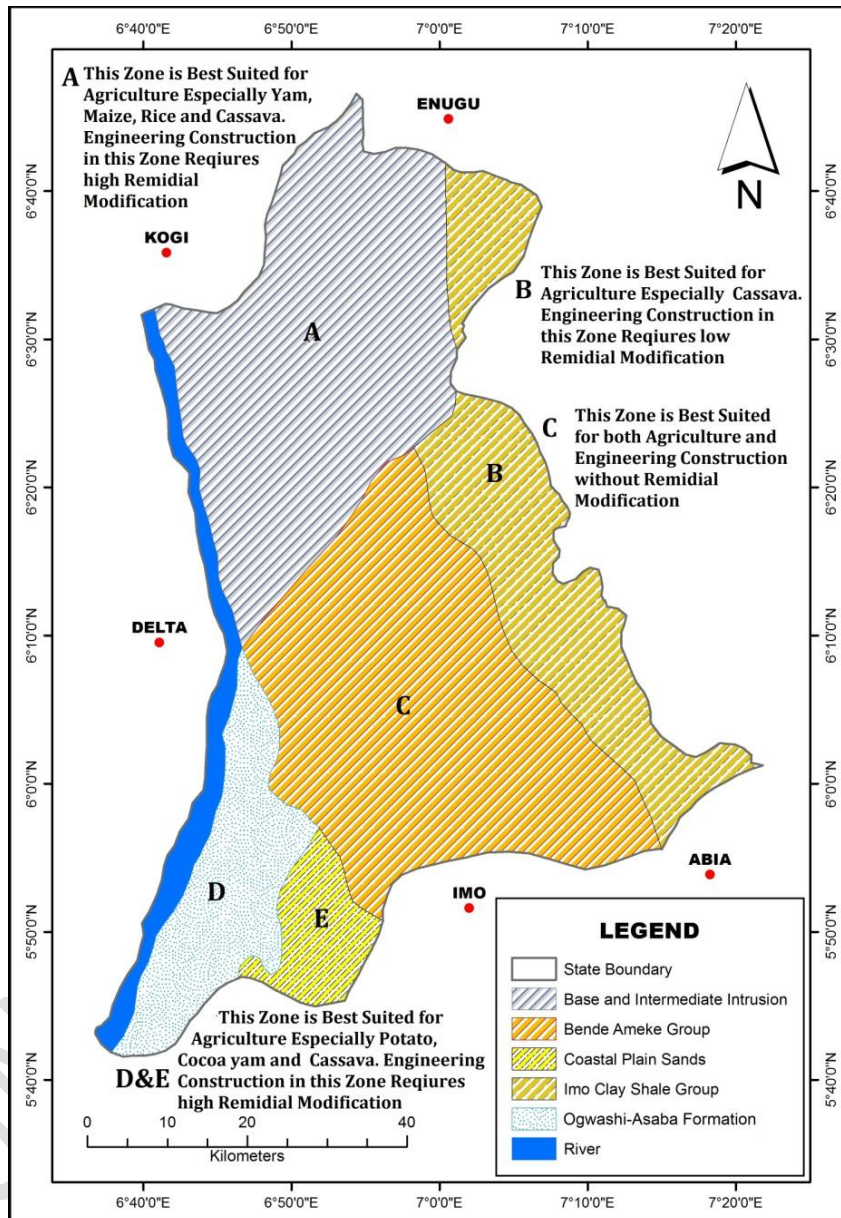


Fig 6: Geology of the Study Area with Land Use Suitability Defined

Source: USGS, Modified by the Authors, (2021)

The result of the soil analysis was subjected to Principal Component Analysis and the results are shown in the tables below:

Comment [K9]: Figure.6: Kindly check the spelling in parameter C "remedial mod..." and correct it to read "remedial modification".

Same for parameter D & E: Correct the spelling of "remedial" and "...REDIURES" to read "...requires"

3.1 Principal Component Analysis

Table 1: Correlation Matrix of the Principal Component Analysis

		Correlation Matrix														
		Clay	Silt	Fine Sand	Coarse Sand	Porosity	Plastic Limit	Liquid Limit	Plastic Index	M.D Density	N.M.C	Shrinkage	Void Ratio	C.B.R	Slope Angle	Elevation
Correlation	Clay	1.000	.538	.467	-.938	-.784	.603	.626	.428	-.513	.795	.812	.858	-.729	-.606	-.539
	Silt	.538	1.000	.206	-.645	-.793	.111	.138	.255	-.144	.404	.526	.384	-.257	-.309	-.636
	Fine Sand	.467	.206	1.000	-.697	-.527	.211	.196	.546	-.460	.710	.613	.376	-.666	-.370	-.272
	Coarse Sand	-.938	-.645	-.697	1.000	.873	-.494	-.510	-.526	.530	-.858	-.861	-.781	.768	.596	.587
	Porosity	-.784	-.793	-.527	.873	1.000	-.190	-.205	-.485	.315	-.750	-.770	-.621	.520	.577	.707
	Plastic Limit	.603	.111	.211	-.494	-.190	1.000	.997	.257	-.435	.366	.438	.421	-.427	-.352	.013
	Liquid Limit	.626	.138	.196	-.510	-.205	.997	1.000	.231	-.447	.376	.459	.462	-.449	-.361	-.016
	Plastic Index	.428	.255	.546	-.526	-.485	.257	.231	1.000	-.188	.524	.549	.306	-.455	-.357	-.378
	M.D Density	-.513	-.144	-.460	.530	.315	-.435	-.447	-.188	1.000	-.708	-.281	-.597	.684	.290	-.107
	N.M.C	.795	.404	.710	-.858	-.750	.366	.376	.524	-.708	1.000	.748	.803	-.850	-.615	-.524
	Shrinkage	.812	.526	.613	-.861	-.770	.438	.459	.549	-.281	.748	1.000	.668	-.654	-.695	-.732
	Void Ratio	.858	.384	.376	-.781	-.621	.421	.462	.306	-.597	.803	.668	1.000	-.808	-.448	-.511
	C.B.R	-.729	-.257	-.666	.768	.520	-.427	-.449	-.455	.684	-.850	-.654	-.808	1.000	.390	.421
Slope Angle	-.606	-.309	-.370	.596	.577	-.352	-.361	-.357	.290	-.615	-.695	-.448	.390	1.000	.407	
Elevation	-.539	-.636	-.272	.587	.707	.013	-.016	-.378	-.107	-.524	-.732	-.511	.421	.407	1.000	

a. Determinant = 4.583E-015

Source: SPSS Output, (2021)

The table above shows all the variables, their relationships and level of correlation. Values above 0.5 shows high correlation, below shows low correlation, values with minus signs shows negative relationships while plus signs show values with positive relationships.

Comment [K10]: -Authors could specify and integrate the type of correlation (Pearson, spearman etc) and mathematical expression used in determining the relationship between the given variables/correlation.

Table 2: Total Variance Explained by of the Principal Component Analysis

Component	Total Variance Explained								
	Initial Eigen-values			Extraction Sums of Squared Loadings			Rotation Sums of Squared Loadings		
	Total	% of Variance	Cumulative %	Total	% of Variance	Cumulative %	Total	% of Variance	Cumulative %
1	8.420	56.136	56.136	8.420	56.136	56.136	4.621	30.804	30.804
2	2.132	14.215	70.352	2.132	14.215	70.352	4.302	28.680	59.483
3	1.293	8.623	78.975	1.293	8.623	78.975	2.924	19.492	78.975
4	.964	6.424	85.399						
5	.651	4.338	89.737						
6	.606	4.042	93.780						
7	.406	2.706	96.485						
8	.216	1.439	97.924						
9	.110	.735	98.659						
10	.093	.621	99.281						
11	.058	.385	99.666						
12	.038	.251	99.917						
13	.012	.080	99.997						
14	.000	.003	100.000						
15	4.711E-005	.000	100.000						

Extraction Method: Principal Component Analysis.

Source: SPSS Output, (2021)

The table above shows that all the variables were collapsed into three components. It used the component to extract total variance explained with an Eigen-value above 1. This means that the component with Eigen-value above 1 explained the majority of the variance. The first component explained 56.136% of the total variance, the second component, explained 14.215% of the total variance, while the third component explained 8.623% of the total variance. In all, the three components explained 78.975% of all the total variables analyzed.

The distribution (Table 3) table of Component Correlation Matrix shows the relationships among all the variables which are significant, and therefore cannot alter the information in interpreting or making making explanation and predictions.

Table 3: Component Matrix

Component Matrix			
	Component		
	1	2	3
Coarse Sand	-.972	.061	-.015
Clay	.933	.079	.191
N.M.C	.918	.013	-.299
Shrinkage	.893	-.183	.140
Porosity	-.837	.423	-.076
Void Ratio	.833	.103	-.035
C.B.R	-.830	-.192	.340
Fine Sand	.668	-.020	-.527
Slope Angle	-.668	.057	-.162
M.D Density	-.584	-.508	.405
Plastic Index	.577	-.132	-.184
Silt	.575	-.490	.331
Plastic Limit	.543	.687	.424
Liquid Limit	.561	.676	.440
Elevation	-.613	.643	-.201
Extraction Method: Principal Component Analysis.			
a. 3 components extracted.			

Comment [K11]: This caption is not appropriate for a scientific study. It must be re-written in a line or sentence format.

Source: SPSS Output, (2021)

The table above shows the unrotated loading of each variable to the three components. In the first component, most of the parameters have high loading value of more than .5 which constitute and include Clay (.933), Natural Moisture Content (.918), Shrinkage (.893), Void Ratio (.833), Fine Sand (.668), Silt (.575), Plastic Limit (.543), Liquid Limit (.561) and Plastic Index (.577);—suggesting an underlying factor of a depositional plain. In other words, it is evident from the soil analysis result that low lands (areas of deposit) exist in the State. Coarse Sand (-.972), Porosity (-.837), C.B.R (-.830), Slope Angle (-.668), M.D.D. (-.584) and Elevation (-.613) also have high loading value of more than .5 but in negative correlation to the underlying factor. This means that there are parameters in support of engineering constructions in the soil analysis of the State and are far away (negatively correlated) from the underlying factor in the tune of their various loadings. In the second component, Plastic Limit (.687), Liquid Limit (.676) and Elevation (.643) suggest an underlying factor of an upland suspended by the remains of consolidated duricrust that are resistant to erosion and the loading of M.D.D (-.584) shows a negative correlation of a little above .5. This means that in this part of the State, engineering construction with minimal modification is applicable. In the third component, even though all the variables contributed 8.623% of the total variance explained, none made a significant contribution individually.

Table 4: Rotated Component Matrix

Rotated Component Matrix			
	Component		
	1	2	3
Elevation	-.896	-.123	.108
Porosity	-.847	-.403	-.075
Silt	.822	.032	.059
Shrinkage	.751	.438	.308
Coarse Sand	-.673	-.605	-.360
Clay	.625	.478	.543
Slope Angle	-.531	-.301	-.320
C.B.R	-.276	-.825	-.291
N.M.C	.466	.817	.219
Fine Sand	.238	.817	-.032
M.D Density	.115	-.775	-.386
Void Ratio	.456	.584	.395
Plastic Index	.386	.483	.038
Liquid Limit	.090	.170	.963
Plastic Limit	.065	.172	.955
Extraction Method: Principal Component Analysis.			
Rotation Method: Varimax with Kaiser Normalization.			
a. Rotation converged in 5 iterations.			

Source: SPSS Output, (2021)

The table above shows the rotated loading of each variable to the three components. In the first component, most of the parameters have high loading value of more than .5, and they include Silt (.822), Shrinkage (.751), and Clay (.625). This depicts an area that is water logged which can swell when wet and shrinks when dry and is also flat. This explains the negative correlation of Elevation (-.896), Porosity (-.847) and Coarse Sand (-.673). In other words these parameters are not available in the areas where soil characteristics represented in component one are strong and positively correlated. The area with this characteristic is found in the North and Northwestern part of the State. In the second component; Natural Moisture Content (.817), Fine Sand (.817) and Void Ratio (.584) have high loading value and depict of Alluvium soil. Coarse Sand (-.605), C.B.R (-.825) and M.D.D. (-.775), have negative correlation. The implication is that soils in the area require high remedial modifications for engineering construction to be carried out in these areas. The area with this characteristic is found in the West and Southwestern part of the State. In the third component, Liquid Limit (.963), Plastic Limit (.955) and Clay (.543) have high loading value, depicting a high Atterberg limit. The implication here is that engineering construction requires high remedial modifications and the area with this characteristic is found in the Eastern part of the State.

Table 5: Kaiser-Meyer-Olkin (KMO) and Bartlett's Test

KMO and Bartlett's Test		
Kaiser-Meyer-Olkin Measure of Sampling Adequacy.		.654
Bartlett's Test of Sphericity	Approx. Chi-Square	467.734
	Df	105
	Sig.	.000

Comment [K12]: It can be written in full.

Source: SPSS Output, (2021)

The table above shows the Kaiser-Meyer-Olkin mMeasure of Ssampling Aadequacy which is above 0.6, and Bartlett's test of Ssphericity of Ssignificance level of 0.00. These values are statistically significant, significance and therefore confirm the acceptability of the Correlation Matrix presented in the tables above to be appropriate.

3.2 Categories of Land Use in the Study Area

3.2.1 Mixed land use

This is a type of urban development that consists of residential, commercial, cultural, institutional, or entertainment land uses, where those functions are physically and functionally integrated, and that provide pedestrian connections (Ndulue, 2018). Mixed land use development can take the form of a single building, a city block, or entire neighbourhoods. The term may also be used to refer to a mixed land use as in real estate project, a building, complex of buildings, district of a city that is developed for mixed use by a private developer, quasi governmental agency among others (Ndulue, 2018).

Field Code Changed

3.2.2 Residential land use

Most of the areas that have well drained terrain and favourable weather are suitable for residential purposes. However, the presence of Uuniversities, Mmarkets, among others has led to the development of residential buildings around these facilities, creating a ehoked-upchoked-up environment for other land users, especially motorists and commuters around them. The other types of land use include recreational, transport, institutional, agricultural, industrial and commercial.

3.2.3 Agricultural land use

~~This is use of land for~~ Lands demarcated for growing of crops and rearing of animals in a commercial or subsistence level. ~~It and~~ is the oldest or conventional mode of human use of land. Lands suitable for agriculture should be mapped and protected by the government using the instrumentality of the law. However, lands in this category are recently being encroached ~~attaeked today~~ by estate developers.

3.2.4 Commercial land use

This type of land use is for economic activities in the study area. For example, wholesales, retails and other service. Commercial land use is now dominating as the study area is becoming urbanized. This kind of land use is basically areas mapped out for markets and there is about sixty-three (63) major markets in Anambra State (Anambra State Government, 2020;

Ayadiuno and Ndulue, 2020). Other commercial land uses are for Petrol/Cooking Gas filling stations which are now sited everywhere in the State. Banks are also struggling for spaces in most residential allocated places (Figures 7, 8 and 9).



Fig 7: Traders taking over the Road

Source: Authors' Fieldwork, (2021)



Fig 8: A Filling Sstation around a highly populated residential area

Source: Authors' Fieldwork, (2021)

3.2.5 Institutional land use

This covers major public and semi-public land uses like educational (tertiary and secondary institutions Universities, primary and secondary schools in the study area), Cultural land use like civic centres, religious worship centres, Sshrines (including all indigenous shrines in the study area), Hhealthcare facilities, Protective and Government Service facilities (Local

Government Area Headquarters, Police Stations, Courts, Post Office, etc). Shops now surround these facilities, causing them to lose the serenity that is required or attributed to them.

3.2.6 Transportation land use

This is the portion of land that is mapped out for transportation routes like roads, railways, subways, or airports: anything that transports people or goods. These are like the circulatory system of the modern cities, and-necessary for all the other land uses to operate effectively. These specified land use type has been encroached upon by other players of land related activities.

3.2.7 Industrial land use

This is the use of a piece of land for industrial purposes like manufacturing. This includes heavy and light industries. Normally heavy industrial uses are located where large pieces of land are required and pollution (like air & sound pollution) is likely to be high. Light industrial uses which may include smaller and- cleaner industries like small processing plants. Industries are normally placed away from urban residential areas; however, their locations are relatively is-in proximity to settlements within the resident population in the study area.

3.2.8 Recreational land use

This is land used for Tourism and Hospitality industry for human relaxation and pleasure. This mostly includes parks, museums, sports grounds, and the sites of other activities that are not essential to life but are pleasurable. Hotels and recreational centres are displacing residents in most cities, as they take -and-take over agricultural lands in the study area.



Fig 9: A Hotel built on once existed Farmland

Source: Authors' Fieldwork, (2021)

3.3 Land Use Cover Change (LUCC) Analysis of the Study Area

Land use cover change (LUCC) maps are used to show-case the spatial information on different types and variations of geomorphological space on the earth's surface of the area in study such as ~~V~~vegetation (forest), ~~D~~isturbed vegetation (cropland), ~~W~~water body, ~~B~~are land

and **B**uilt-up areas (Settlements). A suitable LUCC Land use cover change (LUCC) map or model should be able to capture the dynamism and changing feature characteristics of the earth surface in the study area (Njoku, et al. 2018; Ihinegbu and Ogunwumi, 2021).The LUCC land use cover change (LUCC) of the study area was carried out ~~between~~from 1990 ~~and to~~ 2020 (over ~~a~~, that is for a period of thirty (30) year periods at an interval of ten (10) years, and the resultant maps, tables and charts are presented in this section.~~thus:~~

UNDER PEER REVIEW

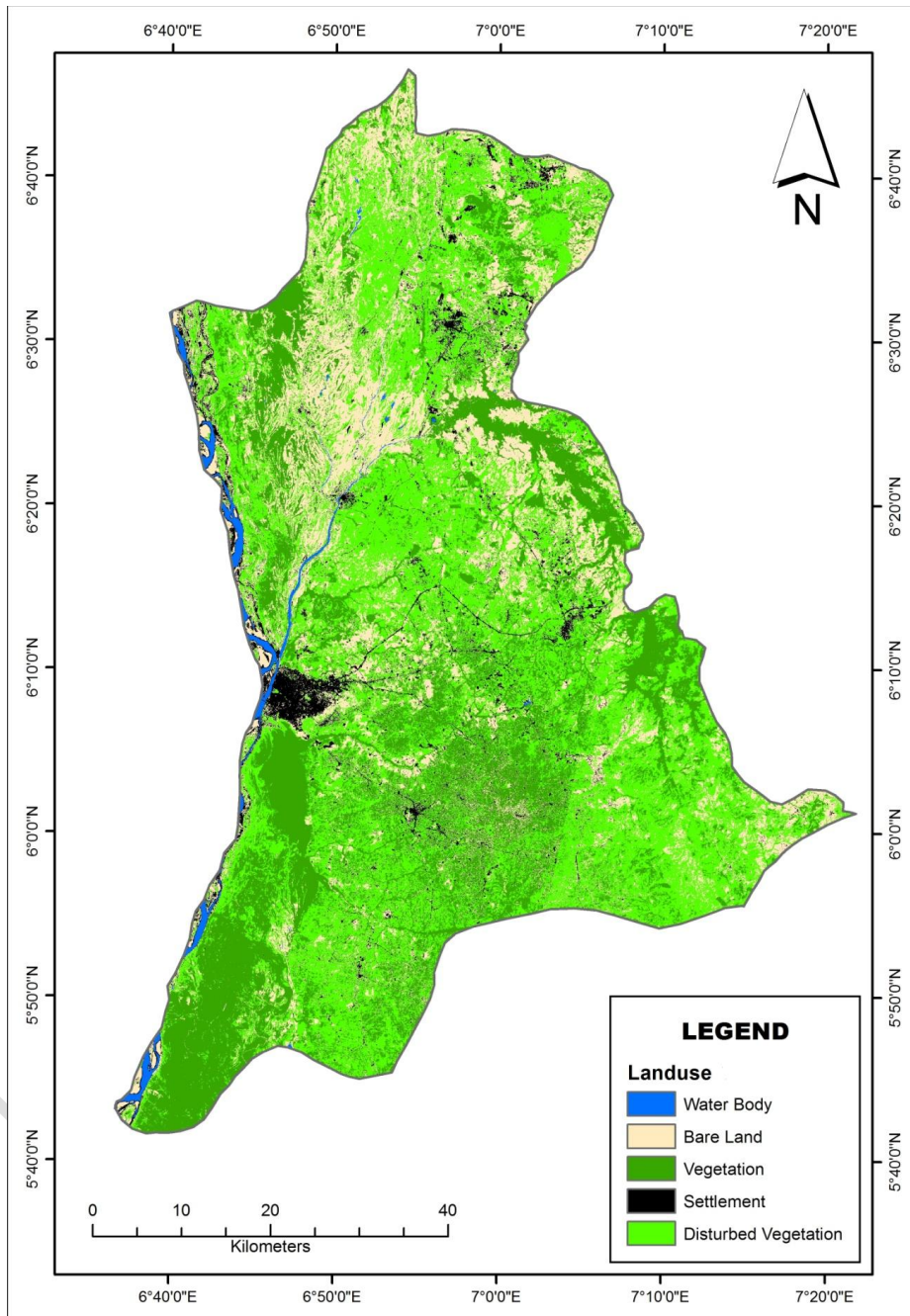


Fig 10: Land Use Cover Change (LUCC) of the Study Area in 1990

Source: USGS, Modified by the Authors, (2021)

Comment [K13]: Figure 10: Authors need to check this critically. Vegetation and disturbed classes or features. Authors could explain in the methodology section description of each class.

-How can we distinguish farmlands and shrubs or agricultural activities from disturbed vegetation?

-Disturbed vegetation could be renamed as "farmlands and shrubs" or any named feature that appropriately describes the settings.

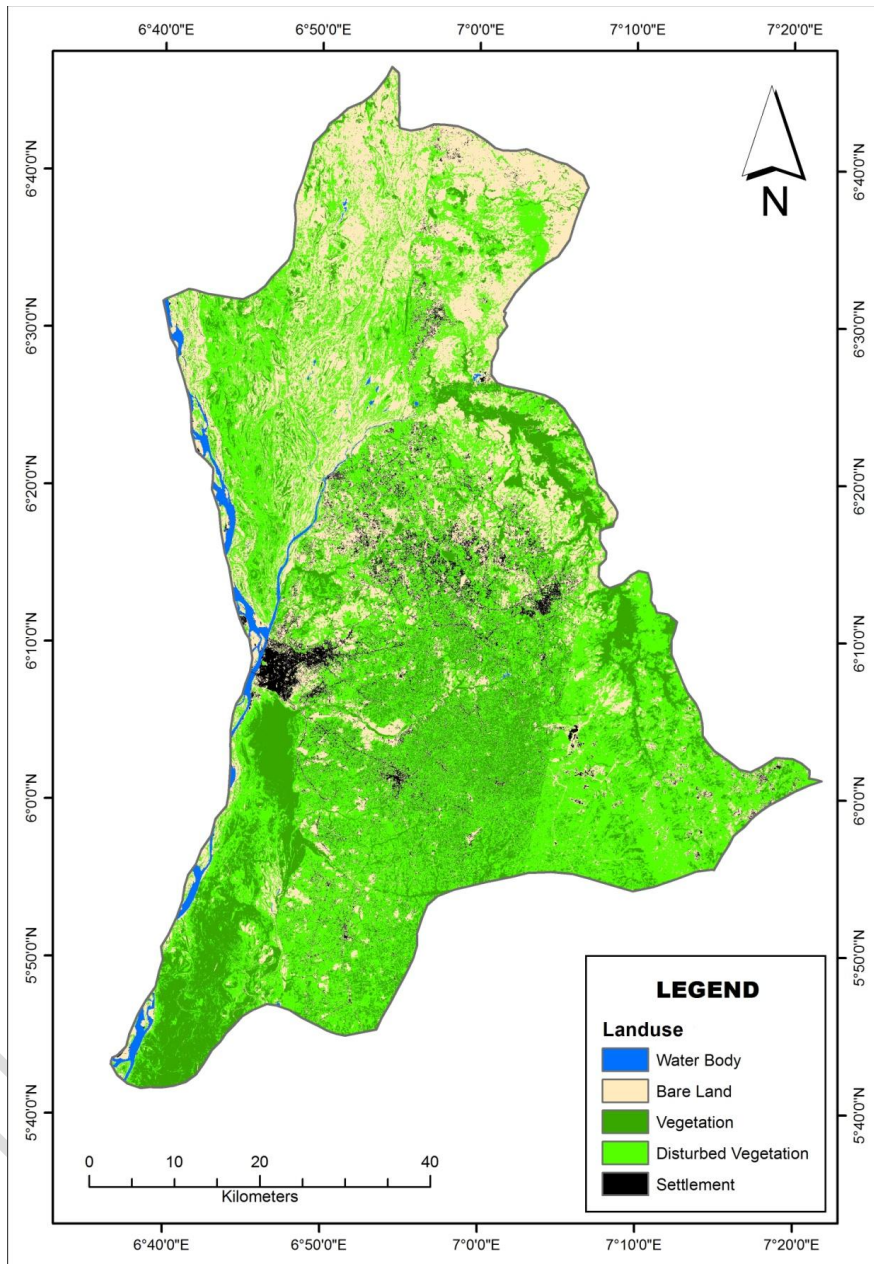


Fig 11: Land Use Cover Change (LUCC) of the Study Area in 2000

Source: USGS, Modified by the Authors, (2021)

Comment [K14]: -Refer to comments on Figure 10.

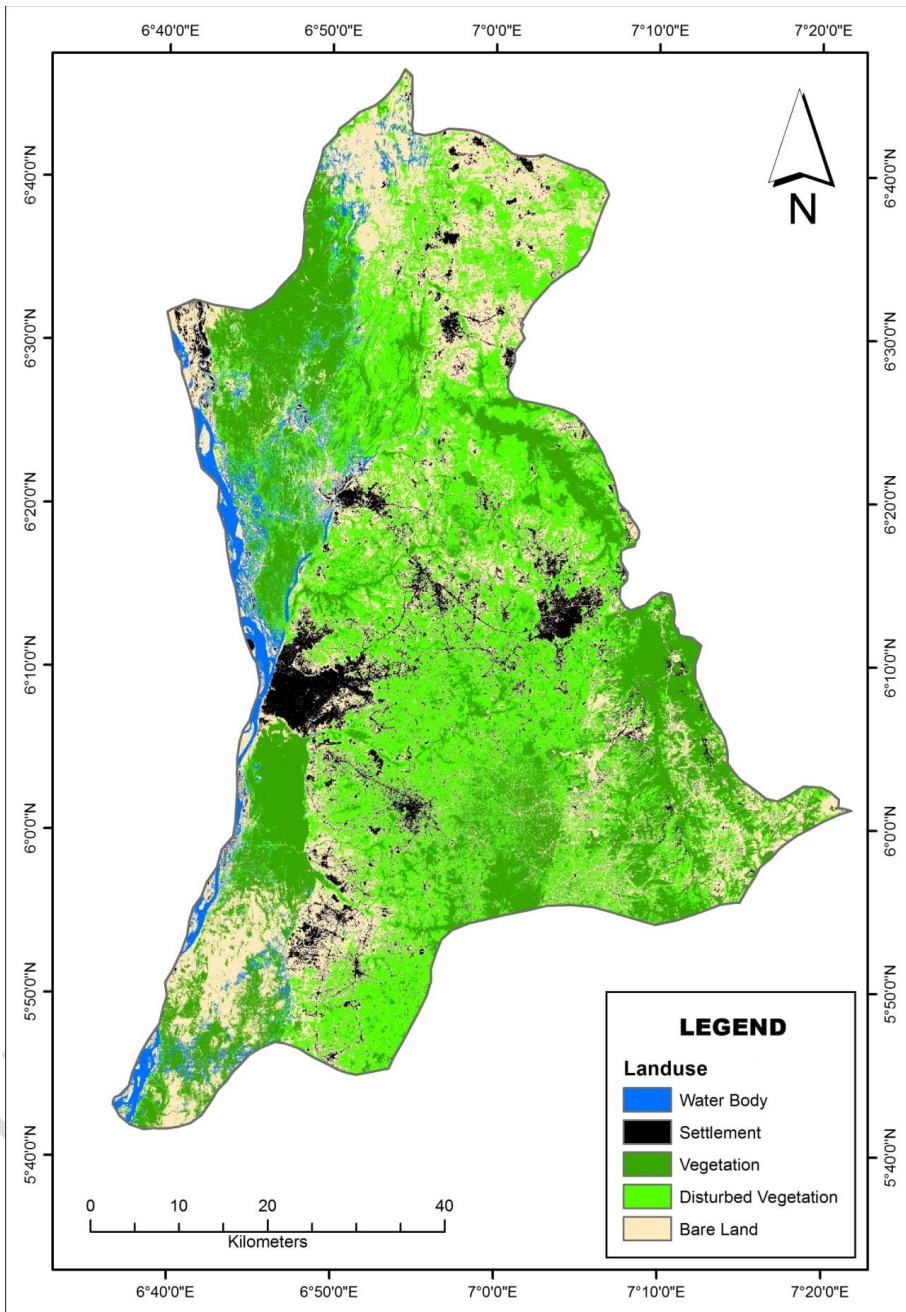


Fig 12: Land Use Cover Change (LUCC) of the Study Area in 2010

Source: USGS, Modified by the Authors, (2021)

Comment [K15]: -Refer to comments on Figures 10 and 11.

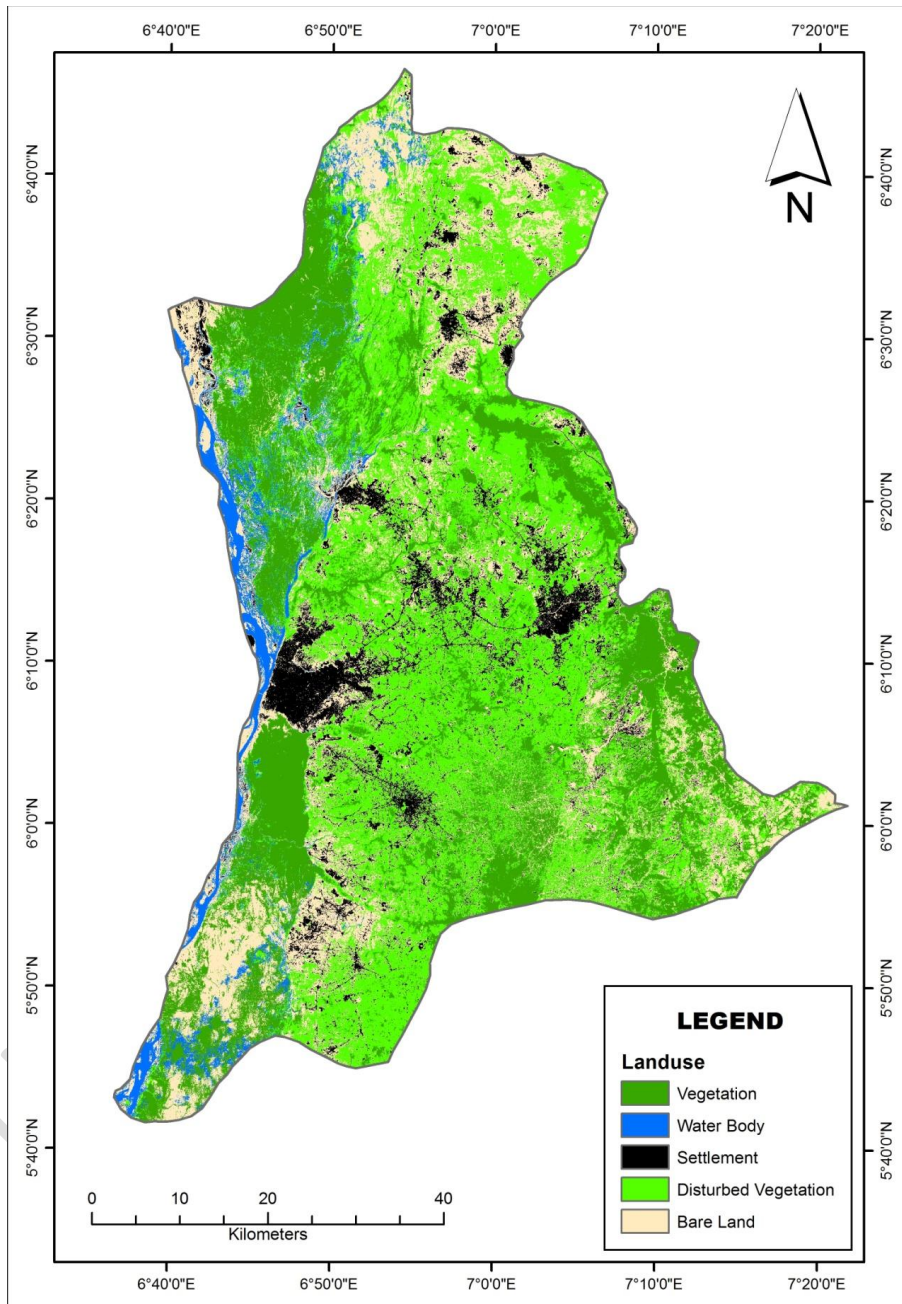


Fig 13: Land Use Cover Change (LUCC) of the Study Area in 2020

Source: USGS, Modified by the Authors, (2021)

Comment [K16]: -Refer to comments on Figures 10,11 and 12.

-Figures 10, 11, 12 and 13 can be culminated and presented as one image that illustrates Land use cover changes over the given period with one legend, scale and direction for easy observation and comparison.

Table 6: Areas and Percentages of Land Use Cover Change (LUCC)

Year Name	1990		2000		2010		2020		% Change
	Area (Km) ²	Area (%)	Area (Km) ²	Area (%)	Area (Km) ²	Area (%)	Area (Km) ²	Area (%)	
Vegetation	2579.91	53.26	2292.18	47.32	1541.85	31.83	1392.65	28.75	-24.51
Disturbed Vegetation	1282.69	26.48	1340.33	27.67	1186.30	24.49	1211.97	25.02	-1.46
Bare Land	717.88	14.82	907.77	18.74	1085.54	22.41	1149.48	23.73	8.91
Settlements	227.18	4.69	222.82	4.6	926.66	19.13	993.50	20.51	15.82
Water Body	35.85	0.74	81.38	1.68	103.66	2.14	95.91	1.98	1.24

Source: Authors Computation, (2021)

The table above shows the land use cover change (LUCC) of the study area from 1990 to 2020. In 1990, Vegetation (forest) covered 2579.91 (53.26%) square kilometers of the study area. It came down to 2292.18 (47.32%) square kilometers in 2000, 1541.85 (31.83%) square kilometers in 2010 and 1392.65 (28.75%) square kilometers in 2020 respectively. The areas termed as Disturbed Vegetation are vegetated areas being tampered through anthropogenic activities like farming; lumbering; harvesting of forest fruits among others, and they covered 1282.69 (26.48%) square kilometers of the study area in 1990, increased to 1340.33 (27.67%) square kilometers in 2000, decreased to 1186.30 (24.49%) square kilometers in 2010 and again went up to 1211.97 (25.02) square kilometers in 2020 respectively. Bare land covered 717.88 (14.82%) square kilometers of the study area in 1990, increased to 907.77 (18.74%) square kilometers in 2000, increased to 1085.54 (22.41%) square kilometers in 2010 and went up again to 1149.48 (23.73%) square kilometers in 2020 respectively. Settlements in 1990 was 227.18 (4.69%) square kilometers, decreased to 222.82 (4.6%) square kilometers in 2000, increased to 926.66 (19.13%) square kilometers in 2010 and again went up to 993.50 (20.51%) square kilometers in 2020 respectively. Water body measured 35.85 (0.74%) square kilometers of the study area in 1990, increased to 81.38 (1.68%) square kilometers in 2000 as a result of clearing of the vegetation which expose more of the water bodies to the satellite imagery camera, it recorded increased again to 103.66 (2.14%) square kilometers in 2010 and went down to 95.91 (1.98%) square kilometers in 2020 as reclamation and sand filling of water bodies began to take place for building constructions in the study area.

The indication here is that Vegetation lost 24.51 percent of its size within the period under review, Disturbed Vegetation lost 1.46 percent at the same period, while Bare Land, Settlements and Water Bodies increased by 8.91 percent, 15.82 percent and 1.24 percent respectively. Percentage increase in the size of Water Bodies is attributed to deforestation that exposed the vegetated covered areas to the eyes of the satellite camera in space. The data represented in the maps above are collated and tabulated as seen in table 6 and the charts below

Comment [K17]: -Table 6: I humbly suggest authors to take a look at the % change in each given class. Values presented are wrong. Kindly use (current/present state - previous state/previous state x 100%). Vegetation feature should be -46.02%, disturbed vegetation should be -5.51% andif these were generated using the ArcGIS software, kindly check the formula or expression used to correct these. If not, calculate the resultant changes manually to correct these errors.

-Changes must reflect in the main text to ensure uniformity and consistency where necessary.

Formatted: No underline, Font color: Red

Formatted: Font color: Red

Formatted: Font color: Red

Formatted: No underline, Font color: Red

Formatted: Font color: Red

Formatted: No underline, Font color: Red

Formatted: Font color: Red

Formatted: No underline, Font color: Red

Formatted: Font color: Red

Formatted: No underline, Font color: Red

Formatted: Font color: Red

Comment [K18]: -Kindly check this value and correct it. The change is 46.01% thereabout.

Formatted: No underline, Font color: Red

Comment [K19]: Same here

Comment [K20]: Same here

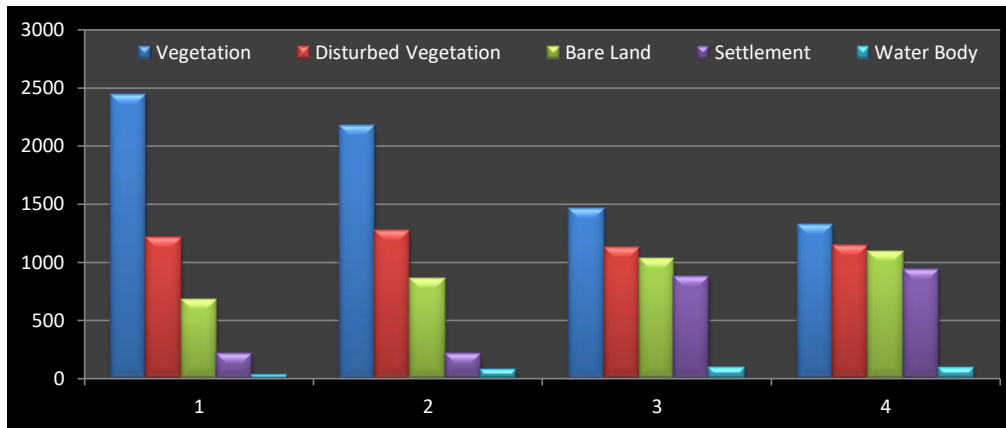


Fig 14: Land Use Cover Change (LUCC) Trend for the Periods under Review

Source: Microsoft Excel Output, (2021)

Note in the chart that the years under consideration for the Land Use Cover Change are represented with numbers (1990 = 1; 2000 = 2; 2010 = 3; while 2020 = 4)

3.4 The Predictions

Following the observed trend of various land use types in the State, Microsoft Excel was employed to predict, henceforth, what the outcome will look like in the next thirty (30) to forty (40) years ahead. The results of the computation are presented thus:

Comment [K21]: -Kindly state the specific version used. Again, the software and process of making the predictions must be stated clearly in the methodology section.

Table 7: Predicted scenarios and Percentage change Areas of in Land Use Cover Change (LUCC) in Anambra State with Predictions

	Vegetation (%)	Disturbed Vegetation (%)	Bare Land (%)	Water Body (%)	Settlements (%)
1990	53.26	26.48	14.82	0.74	4.69
2000	47.32	27.67	18.74	1.68	4.6
2010	31.83	24.49	22.41	2.14	19.13
2020	28.75	25.02	23.74	1.99	20.51
2030*	18.03	24.03	27.54	2.69	27.73
2040*	8.75	22.70	30.04	2.85	35.69
2050*	1.85	22.47	32.60	3.12	39.99
2060*	-8.15	21.31	35.74	3.55	47.57

-Which imageries were used as the base or reference for the predictions?

Source: Authors Computation, (2021)

*Predicted years

The table above shows that by the year 2060, all the vegetated areas that exist now in Anambra State will fizzle out and become part of Disturbed Vegetation, Bare Land, Water Body or Settlements. By that same year 2060, Disturbed Vegetation will reduce to 21.31 % from 26.48 % it was in 1990. Bare Land; Water Body and Settlements will increase to 35.74 % from 14.82 %; 3.55 % from 0.74 % and 47.57 % from 4.69 % they were in 1990 respectively. It is worthy to note here that the increase in Water Body could be as a result of flooding which is likely to occur

due to increase in land use cover change (LUCC) that will be generating lots of runoffs or as a result of exposing other areas of Water Body that is covered by Vegetation to the eye of the satellite during capturing. The charts below show the trend of various land use types in the State and they will be at near equilibrium in 2025 (Figures 15a and 15b).

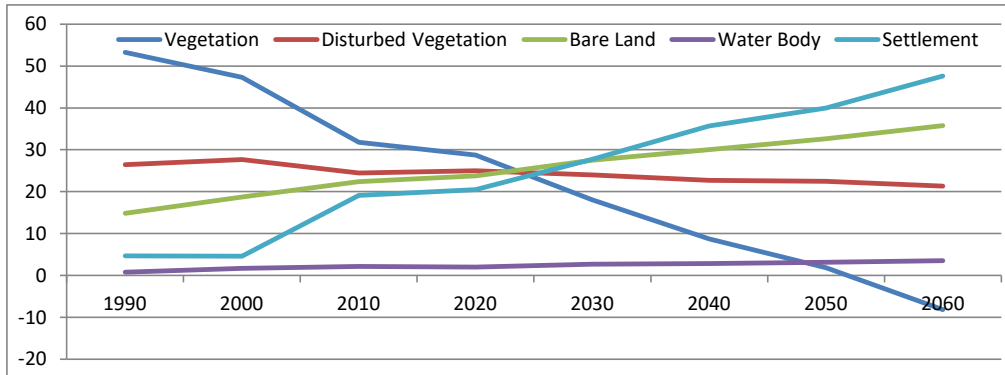


Fig 15a: Land Use Cover Change (LUCC) Trend for the Periods under Review

Source: Microsoft Excel Output, (2021)

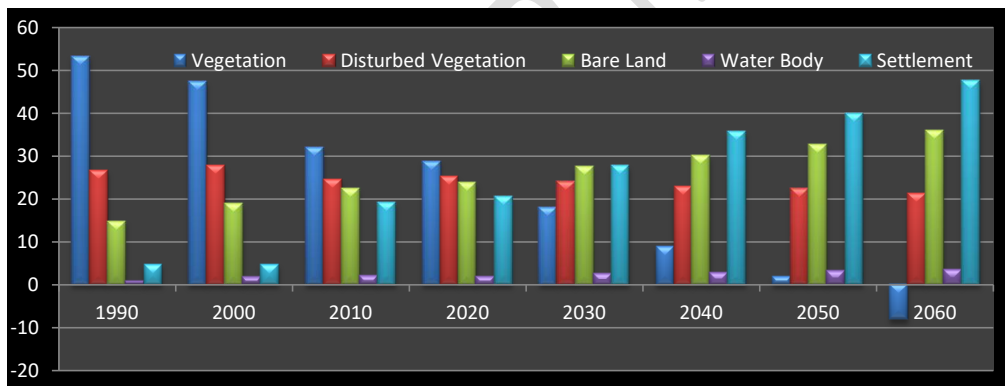


Fig 15b: Land Use Cover Change (LUCC) Trend for the Periods under Review

Source: Microsoft Excel Output, (2021)

4. CONCLUSION

People for long are not living in the active flood plains of Idemili-Niger area and other agriculturally endowed lands, but presently, due to increase in population and pressure on land, people have now started buying and sand filling land in these areas without considering the danger their actions may cause if there is soil failure.

Mixed land use type is visibly observed, especially urban related land use like commercial and other socio-cultural land uses. The land use cover change (LUCC) analysis shows that there is a reduction of vegetated areas (forest) from 53.26% to 28.75% of vegetated (forest) land; disturbed vegetation (crop lands and shrubs) declined reduction from 26.48% to 25.02%. Settlements, on the other hand, experienced an increment of disturbed vegetation (crop land) and

Comment [K22]: Discussion:

-I do not see any pragmatic discussion for this study. Authors need to discuss the results of this study, and not just replicate spatially generated results in the given images or tables. They need to discuss or explain policies, events, natural activities or biophysical factors, coupled with human activities driving these changes. Authors can refer to this latest article on LUCC (1. Sarfo, I., Shuoben, B., Beibei, L. et al. Spatiotemporal development of land use systems, influences and climate variability in Southwestern Ghana (1970–2020). *Environ Dev Sustain* (2021).

<https://doi.org/10.1007/s10668-021-01848-5> and (2. Tolessa, T.,

Dechassa, C., Simane, B. et al. Land use/land cover dynamics in response to various driving forces in Didessa sub-basin, Ethiopia. *GeoJournal* 85, 747–760 (2020).

<https://doi.org/10.1007/s10708-019-09990-4> and cite or refer to them to

enrich the introduction/conceptual framework and the discussion of this study.

-The title of this study, aim/objectives and results generated need to be discussed with linkages.

-Authors can link the results of this study to existing literature. They need to state where necessary, thus, which part of the study agrees with or disagrees with an existing study.

-Spatial analysis could be linked to the correlation matrix or PCA analysis, backed by some policies or interventions which are driving LUCC changes over the given period.

Comment [K23]: -Axis titles for the vertical/horizontal (variables used, thus, Years and LUCC trends (%)) must be added to added to the Fig.15a.

--The legend or features (bare land, waterbodies, vegetation ...) could be placed below the years or horizontal axis

Comment [K24]: -Axis titles for the vertical/horizontal (variables used, thus, Years and LUCC trends (%)) must be added to added to the Fig.15b.

-The legend or features (bare land, waterbodies, vegetation ...) could be placed below the years or horizontal axis

~~a whopping increase~~ of 20.51% from 4.69% ~~of Settlement respectively~~ in Anambra ~~Anambra~~ State within a period of thirty (30) years. Presently, all the various land use types in the State are almost attaining equilibrium and if nothing is done to check the trend, there may no longer be available space for vegetation or farmland in the State in the next thirty (30) to forty (40) years ahead.

The government whose responsibility it is to protect the environment through enactment of laws want to remain in power and will do almost everything possible to please the people at the detriment of the environment. ~~Hence~~, the reason for the delay in reacting to some actions of people or enforcing compliance to some safety measures relating to land use ~~due to because of~~ fear of ~~low patronage and loss of power~~, ~~being mobilized against by money bags and voted out of power~~.

COMPETING INTERESTS DISCLAIMER:

Authors have declared that no competing interests exist. The products used for this research are commonly and predominantly use products in our area of research and country. There is absolutely no conflict of interest between the authors and producers of the products because we do not intend to use these products as an avenue for any litigation but for the advancement of knowledge. Also, the research was not funded by the producing company rather it was funded by personal efforts of the authors.

REFERENCES

- Adefioye, S.A., (2013). Analysis of Land Use/Land Cover Pattern along the River Benue Channel in Adamawa State, Nigeria. *Academic Journal of Interdisciplinary Studies*, 2, 5: 95-107. DOI:10.5901/ajis.2012.v2n5p95.
- Adinna, E. N. (2001). *Environmental Hazards and Management*. Snaap Press Ltd: Enugu.
- Akpomrere, O.R. and Nymore, O. (2012). Land Use Patterns and Economic Development of Ikeja in Lagos State, Nigeria: The Geographic Information System Approach. *IJEDRI*, 3 (3): 39-47
- Anambra State Government (2020) Government soon to re-open Anambra's 63 major markets; [Online]. Available at <https://www.anambrastate.gov.ng/news/government-soon-to-re-open> (Accessed on 12 June, 2021)
- Ayadiuno, R.U. and Ndulue, D. C. (2021). An Investigation into some Soil Indices as Indicators of High Soil Erodibility in Anambra State Southeastern, Nigeria. *IJMA*, 10(2), 3451 - 3464. Retrieved from <http://www.modern-journals.com/index.php/ijma/article/view/1187>
- Ayadiuno, R.U. and Ndulue, D.C. (2020). The Misconception of COVID-19 Pandemic in Africa, Causes And Consequences: An Appraisal of Anambra State Southeast Nigeria. *IJARSSSEST*, 5(2), 19-34. <https://doi.org/10.48028/ijprds/ijarsssest.v5.i2.03>

Comment [K25]: Conclusion:

-Findings based on predictions could be summarized and added to the main findings in the concluding section.

-I humbly suggest authors include the significance of the study findings to key players and stakeholders.

-What are the limitations or weaknesses of the study? They can be integrated in the concluding section.

-Possible areas for further research and recommendations could be added here.

Ayadiuno, R.U., Ndulue, D. C. and Mozie, A. T. (2021). Analysis of the Terrain and Soil Particles on the Plains of Du and Anambra River Basins In Uzo Uwani and Ayamelum Local Government Areas in Enugu and Anambra States, Southeastern Nigeria. J.PONTE, 77(2). <https://doi.org/10.21506/j.ponte.2021.2>.

Castlelyon Corporation (n.d), <https://www.castlelyons.net/> (Accessed on 12 June, 2021)

Gobin, A., Jones, R., Kirky, M., Campling, M., Govers, G., Kosmas, C., and Gentile, A.R. (2004). Indicators for Pan-European Assessment and Monitoring of Soil Erosion by Water. Environmental Science & Policy; Vol 7(1), Pp 25-38
<https://doi.org/10.1016/j.envsci.2003.09.004>

Igwe, O. & Egbueri, J.C. (2018) "The Characteristics and the Erodibility Potentials of Soils from Different Geologic Formations in Anambra State, Southeastern Nigeria", J Geol Soc India, 92 (4) Pp. 471–478. DOI: 10.1007/s12594-018-1044-1

Ihinegbu, C. and Ogunwumi, T. (2021). Multi-criteria Modelling of Drought: A Study of Brandenburg Federal State, Germany. Model. Earth Syst. Environ., <https://doi.org/10.1007/s40808-021-01197-2>

Klingebiel, A. A and Montgomery, P. H. (1962). Land Capability Classification, Agric. Handbook No 18, Washington DC, department of Agriculture.

Liu, Y. and Long, H. (2016). Land Use Transitions and their Dynamic Mechanism: The Case Study of the Huang-Huai-Hai Plain. J. Geogr. Sci., 26 (5): 515- 530. DOI: 10.1007/s11442-016-1283-2

Ndulue, D.C. (2018). Geomorphological Control of Land Use in Idemili South L. G. A of Anambra State. Unpublished B.Sc project, Department of Geography, University of Nigeria, Nsukka.

Nigeria Administrative Map Shapefile - DIVA GIS, <https://www.diva-gis.org/gdata>. Accessed and downloaded on 2nd February, 2021

Njoku, C.G; Efiang, J; Uzoezie, A,C; Okeniyi, F.O, Alagbe, A.O. (2018). A GIS Multi-criteria Evaluation for Flood Risk-Vulnerability Mapping of Ikom Local Government Area, Cross River State. JGEESI, 15(2):1–17

Obetta M.C; Anyadike, R.N.C; Mbajiorgu, C.C.; Phil-Eze P.O; Onyekwelu, C.A; Ochege, F.U & Ezech, C.U. (2011). Diagnosis, prioritization and costing of gully erosion Management Strategies. NEWMAP Technical Report.

Offodile, M.E. (2002). Groundwater Study and Development in Nigeria 2nd Edition published by Mecon Geology and Engineering Service Limited, Jos, Nigeria.

Ofomata, G. E. K. (1978). The Nsukka Environment. Fourth Dimension publishers: Enugu.

- Ofomata, G. E. K. (2001). Environment and Damage. University of Nigeria Press: Nsukka.
- Ofomata, G.E.K. (2008) Geographic Thought. 2nd ed . Jamoe publishers (Nigeria): Enugu
- Oke, T. R. (2002). Boundary Layer Climates. 2nd ed. Taylor & Francis e-Library, Pp. 262-303
- Olaleye, J.B., Oludayo, A.E. and Igbokwe, Q.N. (2009): land use change Detection and analysis of remotely sensed Data in Lekki Peninsula Area of Lagos Nigeria.
- Solaimani, K., Modallaldoust, S., Lotfi, S. (2009): Investigation of Land Use on Soil erosion process using geographical information system International System International Journal of Environmental Science & Technology.
- Umeji A. C. (2002). "The Geology and Mineral Resources of Igboland". In Ofomata G. E. K. (ed), A survey of Igbo Nation, African First Publishers Ltd: Onitsha. Pp 56-72.
- Umeuduji, J. E. (1988). Terrain Constraints to Urban Land Use: The Case of Enugu, Nigeria. Unpublished M.Sc Thesis, Department of Geography, University of Nigeria, Nsukka.
- United States Geological Survey (USGS). <https://earthexplorer.usgs.gov>. (Accessed on 12 June, 2021).