

## DNA extraction and quantification of some economically important fruits in Tamil Nadu

### ABSTRACT

Humans can benefit greatly from functional foods in order to preserve good health. The research began with the extraction of DNA from the white edible section of *Cocos nucifera* and the flesh of *Borassus flabellifer* fruits using the Simple, Edward, PCI, and CTAB methods. To confirm the existence of DNA, the complete isolated DNA was examined using the DPA and Keller-killani tests. Following the identification test, UV spectroscopy was used to quantify the results. We can get the absorbance values at 260nm and 280nm, as well as the absorbance ratio ( $A_{260}/A_{280}$ ), using this method. When compared to other procedures, the CTAB approach produces acceptable results at low temperatures. Both the white edible part of *Cocos nucifera* and flesh of *Borassus flabellifer* fruits results in obtaining high purity containing DNA, on using CTAB method and the absorbance ratio obtained for the isolated DNA from *Cocos nucifera* (simple-1.45; Edward -0.91; PCI-1.81 and CTAB-1.83) and for *Borassus flabellifer* (simple-1.24; Edward - 0.70; PCI-1.70 and CTAB-1.85) and also the concentration obtained from the *Cocos nucifera* (simple-4.94 $\mu\text{g/ml}$ ; Edward -4.7 $\mu\text{g/ml}$ ; PCI-5.25 $\mu\text{g/ml}$  and CTAB-8.25) and for *Borassus flabellifer* (simple-2.48 $\mu\text{g/ml}$ ; Edward- 2.14 $\mu\text{g/ml}$ ; PCI-4.25 $\mu\text{g/ml}$  & CTAB-6.4 $\mu\text{g/ml}$ ). This indicates that the white edible part of *Cocos nucifera* was better than flesh of *Borassus flabellifer* fruits.

### Key words:

*Borassus flabellifer*; *Cocos nucifera*; DNA isolation; Electrophoresis.

### 1. INTRODUCTION

Food and health are inextricably linked. The present notion of functional foods arose from a growing knowledge that eating nutritious foods contributes to a healthy diet, as well as research into the mechanisms by which foods affect metabolism and health. The most basic goal of eating is to collect nutrients for our bodies and to meet our metabolic requirements [1]. Some foods provide additional benefits in addition to their nutritional value, which may be defined as any item that has a positive impact on an individual's health [2]. It act as anti-cancer, anti-heart disease, anti-diabetes, anti-hypertension, anti-inflammation, anti-microbial, anti-viral, anti-parasitic, anti-psychotic, anti-spasmodic, anti-ulcer characteristics in many disease states in animals, and human epidemiology [3] .

*Cocos nucifera* and *Borassus flabellifer* were known to be functional food because the health benefits of both the sources were not limited to its nutritional values, but goes way beyond it. [4] . Copra contains approximately 65 to 75 percent oil. The spa is transformed into jaggery, vinegar, and sugar [5, 6]. In India, the coconut water and coconut kernel contain microminerals and nutrients hence it is used for food and its applications in Ayurvedic medicine. Which have anti-bacterial, hypoglycaemic activity [7,8].

The Palmyra palm is a synonym of *Borassus flabellifer*. The tree is widely exploited in areas where it grows and has a very wide range of applications [9]. Such as making paper, absorption of heavy and toxic metals, energy production and soil fertilizing [10,11,12] .

The central information storage system of most animals, plants, and even some viruses is DNA, or deoxyribonucleic acid. The term originates from its structure, which consists of a sugar and phosphate backbone with bases protruding from it—basis. So "deoxyribo" is the sugar, and "nucleic acid" is the phosphate and bases. Adenine, cytosine, thymine, and guanine, or A, C, T, and G, are the bases. As part of those chromosomes, DNA is arranged structurally into chromosomes, which are subsequently looped around nucleosomes [13].

It is organised functionally into genes, which are pieces of DNA that lead to observable traits. And those characteristics are derived not from the DNA itself, but rather from the RNA derived from the DNA, or, more commonly, from proteins derived from the RNA derived from the DNA. Thus, the central dogma of molecular biology is that genes, which are made of DNA, are converted into messenger RNAs, which are then converted into proteins. Individual proteins, however, are responsible for the majority of the observable traits of individuals, such as eye colour, height, or one or more other characteristics [14].

The purpose of this study was to use several methodologies to evaluate the qualitative and quantitative analysis of DNA molecules extracted from the white edible section of *Cocos nucifera* and the flesh of *Borassus flabellifer* fruits.

## 2. MATERIALS AND METHODS

### *Plant collections and extraction*

Flesh of *Borassus flabellifer* fruits and the white edible section of *Cocos nucifera* fruits were harvested from farms near Thidal, Erode. Plant material was collected and handled exclusively at room temperature for further research.

### **Simple method**

The white edible section of the *Cocos nucifera* fruit and the flesh of the *Borassus flabellifer* fruit were extracted separately and moistened and macerated in the Eppendorf tube at room temperature for 15 seconds without buffer. The material was vortexed for 5 seconds after 400  $\mu$ l of extraction buffer was added. This mixture can then be left at room temperature for at least 45 minutes until all of the samples have been extracted. The extracts were separated for 1 minute at room temperature (13,000 rpm) before being transferred to a new Eppendorf tube. This supernatant was mixed with 300  $\mu$ l isopropanol and left to settle at room temperature for 2 minutes. After centrifuging at (13,000 rpm) for 5 minutes, the pellet was vacuum dried and dissolved in 100  $\mu$ l 1xTE. After then, the isolated DNA was stored at 4°C for more than a month [15].

### **Edward method:**

Separately, 50 mg of the white edible part of *Cocos nucifera* and Flesh of *Borassus flabellifer* fruit were weighed and ground with 350  $\mu$ l of extraction buffer. To make it homogeneous enough to put into a micro centrifuge tube, add more buffer until it reaches a final volume of 1100  $\mu$ l. The homogenates were harvested at room temperature. In a new micro centrifuge tube, add an equal volume of isopropanol to the supernatant and gently mix by inversion. For 5 minutes, immerse the mixture in an ice bath. The micro centrifuge was then spun for 4 minutes at 13,000 rpm. After draining the supernatant, wash the DNA pellet in 500  $\mu$ l of 70% ethanol (v/v). Centrifuge at room temperature (13,000 rpm) for 2 minutes in a micro centrifuge. Blot away any excess ethanol by inverting / placing the pellet on a clean paper towel. Allow the pellet to air dry before dissolving the extracted plant DNA in 50  $\mu$ l of water and storing it at 4°C for immediate use or -20 °C for long-term storage [14].

### **Phenol-Chloroform-isoamylalcohol extraction method:**

Tissue digestion was accomplished by introducing 50 mg of white edible component of *Cocos nucifera* to a micro centrifuge tube containing the flesh of *Borassus flabellifer* fruits. Per sample, add 400 µl of extraction buffer. Incubate at 50°C for 2 hours, or until the sample is clear, after adding 10 µl of proteinase k. Add an equivalent amount of PCI to the digested DNA to be purified in a tube. After 5 minutes of moderate mixing and 10 minutes of microcentrifugation at 10,000 rpm at room temperature, the phases should be thoroughly separated. Spin the DNA solution for a longer time if it is thick or contains a lot of protein. Carefully decant the DNA-containing supernatant into a new tube. Chloroform and isoamylalcohol are mixed in equal proportions (24: 1). 2 minutes of gentle mixing followed by 1 minute of room temperature centrifugation (10,000 rpm) [16].

Using a 1000µl micropipette, remove the top aqueous phase containing DNA and transfer it to a new tube. 2 to 2.5 litres of ice cold 100 percent ethanol. Gently mix and place in a deep freezer overnight or in a 70°C oven for 1 hour, then spin for 20 minutes at maximum speed in a fixed angle microcentrifuge to remove the supernatant. The supernatant can simply be poured off if the pellet is larger in size. Separate the ethanol supernatant with a micropipette for small pellets and carefully add 1ml of 70% ethanol at room temperature. Gently invert the microcentrifuge tube. Use 95 percent ethanol at this stage if the DNA molecules being separated are very small. The supernatant is removed, and the pellet is dried at room temperature before being dissolved in 20-40 µl of TE buffer at pH 8 and stored at 4°C [11].

#### **CTAB Extraction method:**

In a sterile Eppendorf tube, 400 µl of CTAB extraction buffer was added to 3 percent Poly vinyl pyrrolidone, which was heated to 65°C. 2 – mercaptoethanol (10 µl) was added to this combination right before the commencement of the extraction procedure in two tubes. The white edible component of *Cocos nucifera* and the flesh of *Borassus flabellifer* fruit were crushed into powder separately in two micro centrifuge tubes with buffer and reagents. Ground frozen tissue is incubated with a poly vinyl pyrrolidone / 2 mercaptoethanol / CTAB extraction solution that is heated (65°C). Inversion was used to gently mix the mixture on a regular basis. Add Chloroform:isoamyl alcohol to the homogenate and mixed by gentle inversion, then centrifuged at room temperature (10,000 rpm) for 5 minutes. Pipette out the supernatant and add to a CTAB/NaCl solution (0.1 volume at 65°C) and gently mixed by inversion. [17] .

After mixing and centrifuging, the upper phase was recovered. At 65°C, one litre of CTAB precipitation solution was added to the recovered supernatant. A precipitate formed at this point. Pellet was recovered by decanting the upper phase. The samples were dissolved in 500µl of high salt TE buffer (white edible part of *Cocos nucifera* and fruit flesh of *Borassus flabellifer*). The DNA was precipitated by

adding 300 µl of ice cold isopropanol, gently mixing it in, and centrifuging it for 15 minutes at 1000 rpm. To recover the DNA pellet, the upper liquid was decanted and washed in 80 percent and 100 percent ethanol. After drying, the pellet was resuspended in TE buffer and stored at - 20°C [18] .

### **QUALITATIVE ESTIMATION OF DNA:**

#### **Diphenylamine (DPA) Test:**

The diphenylamine was mixed with sample, and the aforesaid mixture was placed in a boiling water bath for a few minutes. The presence of DNA is confirmed by a blue colour [19].

#### **Killer – Killani Test:**

Mix together 1ml of glacial acetic acid with one drop of 1% ferric chloride solution and 1 ml of concentrated sulphuric acid from the side wall of tube. Brown ring at interface indicates a deoxy-sugar (Pentose sugar) characteristic of every nucleic acid [20].

### **DNA QUANTIFICATION USING UV SPECTROSCOPY METHOD:**

All the isolated DNA from Simple, Edward, PCI and CTAB methods were undergo UV spectrophotometer (model UV- 1800) measurement to determine the concentration of DNA samples [21]. DNA absorb at concentrations as low as 2.5µg \µl. Based on this the absorbance at 260nm in a solution of double stranded DNA. And record absorbance at 280 nm in a 1cm cuvette of isolated DNA samples [22].

**DNA Concentration ( $\mu\text{g/ml}$ ) = (O.D<sub>260</sub>) x (dilution factor) x [50µg DNA/ml/ (1 O. D<sub>260</sub> unit)]**

### **DNA QUALIFICATION USING GEL ELECTROPHORESIS**

By heating for about 2 minutes in a microwave oven, 1.2 percent w/v agarose was dissolved in TAE buffer. It was cooled to around 50°C before being mixed into the gel matrix at a concentration of 1mg/ml to allow fluorescent visualisation of the DNA fragments under UV light. Six litres of DNA were mixed with two litres of loading dye before being loaded onto sample cells [23] . Then the gel was run at 80 volts [24].

## **3.RESULTS**

## QUALITATIVE ESTIMATION OF DNA

As the DNA isolated from white edible part of *Cocos nucifera* and flesh of *Borassus flabellifer* fruit using various methods of extraction, the entire extracted portion were performed with identification test in order to confirm that the isolated portion was DNA. TABLE: 1 shows the interferences for both the Keller-Killani test and Diphenylamine test (DPA).

**TABLE: 1 ESTIMATION OF DNA**

| S.No | METHODS                     | REMARK                              | INTERFERENCE              |
|------|-----------------------------|-------------------------------------|---------------------------|
| 1.   | <b>Keller-killani test:</b> | Brown ring formed between two layer | Presence of de-oxy sugar. |
| 2.   | <b>Diphenylamine test:</b>  | Blue colour obtained                | DNA present.              |

## QUANTIFICATION OF DNA USING UV SPECTROSCOPY

The entire DNA that has been isolated from white edible part of *Cocos nucifera* and flesh of *Borassus flabellifer* fruit using various extraction methods like Simple, Edward, PCI and CTAB methods, and then followed by the exposure of isolated DNA towards UV in order to determine the absorbance at 260nm and 280nm was recorded and tabulated as it was shown in the TABLE: 2 and TABLE: 3

**TABLE: 2 COMPARING THE ABSORPTION VALUES OF DNA OBTAINED BY USING VARIOUS METHODS FROM WHITE EDIBLE PART OF *COCOS NUCIFERA***

| S.no | Methods             | Absorbance at 260nm | Absorbance at 280nm | Absorbance ratio (260/280) |
|------|---------------------|---------------------|---------------------|----------------------------|
| 1.   | Simple              | 0.988               | 0.678               | 1.45                       |
| 2.   | Edward              | 0.949               | 1.036               | 0.91                       |
| 3.   | Phenol-chloroform   | 1.050               | 0.581               | 1.81                       |
| 4.   | CTAB                |                     |                     |                            |
|      | At room temperature | 1.65                | 0.90                | 1.83                       |
|      | At high temperature | 1.75                | 1.25                | 1.46                       |
|      | At low temperature  | 1.95                | 1.02                | 1.91                       |

**TABLE: 3 COMPARING THE ABSORPTION VALUES OF DNA OBTAINED BY USING VARIOUS METHODS FROM FLESH OF *BORASSUS FLABELLIFER* FRUIT**

| S.no | Methods             | Absorbance at 260nm | Absorbance at 280nm | Absorbance ratio (260/280) |
|------|---------------------|---------------------|---------------------|----------------------------|
| 1.   | Simple              | 0.497               | 0.398               | 1.24                       |
| 2.   | Edward              | 0.428               | 0.605               | 0.70                       |
| 3.   | Phenol-chloroform   | 0.851               | 0.490               | 1.71                       |
| 4.   | CTAB                |                     |                     |                            |
|      | At roomtemperature  | 1.280               | 0.671               | 1.85                       |
|      | At high temperature | 1.050               | 0.801               | 1.31                       |
|      | At low temperature  | 2.12                | 1.13                | 1.87                       |

The Concentration of DNA can also be determined by using UV absorbance values (O.D values). As the O.D values increased, the concentration of DNA also get increased (i.e) O.D is directly proportional to the DNA concentration. For each extraction methods the DNA concentration can be calculated. The values of concentration can be observed from TABLE: 4 and TABLE: 5

**TABLE: 4 CHARACTERIZATION OF EXTRACTED DNA USING VARIOUS METHODS FROM WHITE EDIBLE PART OF *COCOS NUCIFERA***

| S.no | Methods             | O.D<br>( <sub>260</sub> )value | Concentration<br>of DNA (µg/ml) | Absorbance<br>ratio (260/280) |
|------|---------------------|--------------------------------|---------------------------------|-------------------------------|
| 1.   | Simple              | 0.988                          | 4.94 µg/ml                      | 1.45                          |
| 2.   | Edward              | 0.949                          | 4.70 µg/ml                      | 0.91                          |
| 3.   | Phenol-chloroform   | 1.05                           | 5.25 µg/ml                      | 1.81                          |
| 4.   | CTAB                |                                |                                 |                               |
|      | At room temperature | 1.65                           | 8.75 µg/ml                      | 1.83                          |
|      | At high temperature | 1.75                           | 8.25 µg/ml                      | 1.46                          |
|      | At low temperature  | 1.95                           | 9.71 µg/ml                      | 1.91                          |

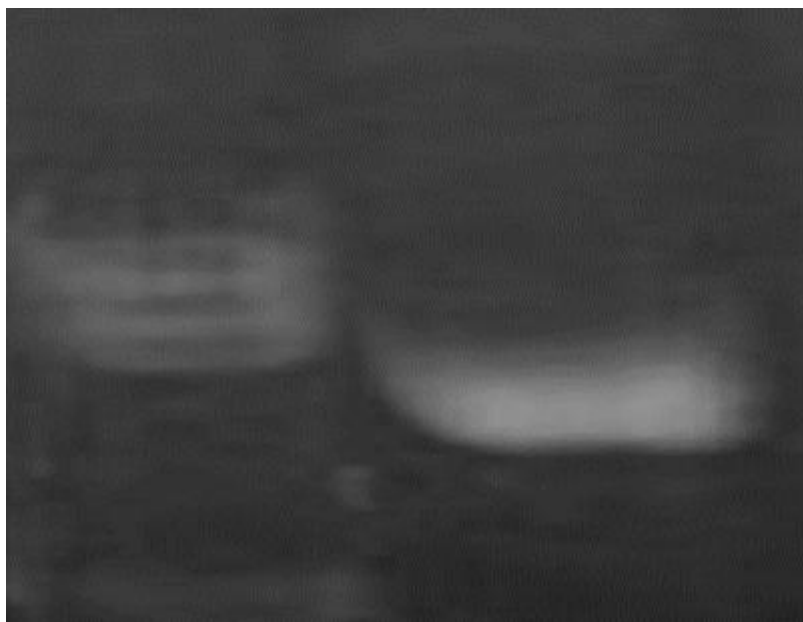
**TABLE: 5 CHARACTERIZATION OF EXTRACTED DNA USING VARIOUS METHODS FROM FLESH OF *BORASSUS FLABELLIFER* FRUIT**

| S.no | Methods             | O.D<br>( <sub>260</sub> )value | Concentration<br>of DNA (µg/ml) | Absorbance<br>ratio (260/280) |
|------|---------------------|--------------------------------|---------------------------------|-------------------------------|
| 1.   | Simple              | 0.497                          | 2.48 µg/ml                      | 1.24                          |
| 2.   | Edward              | 0.428                          | 2.14 µg/ml                      | 0.707                         |
| 3.   | Phenol-chloroform   | 0.851                          | 4.25 µg/ml                      | 1.70                          |
| 4.   | CTAB                |                                |                                 |                               |
|      | At room temperature | 1.28                           | 6.4 µg/ml                       | 1.85                          |
|      | At high temperature | 1.05                           | 5.25 µg/ml                      | 1.31                          |
|      | At low temperature  | 2.12                           | 10.6 µg/ml                      | 1.87                          |

### QUALIFICATION BY GEL ELECTROPHORESIS

After the isolation of DNA from white edible part of *Cocos nucifera* and flesh of *Borassus flabellifer* fruit using different methods of extraction, highly varies in molecular weight. Gel electrophoresis was performed in order to determine the purity level, by observing the trait of the migration of DNA that has been loaded in the wells of the gel with the aid of TAE buffer at the basic pH.

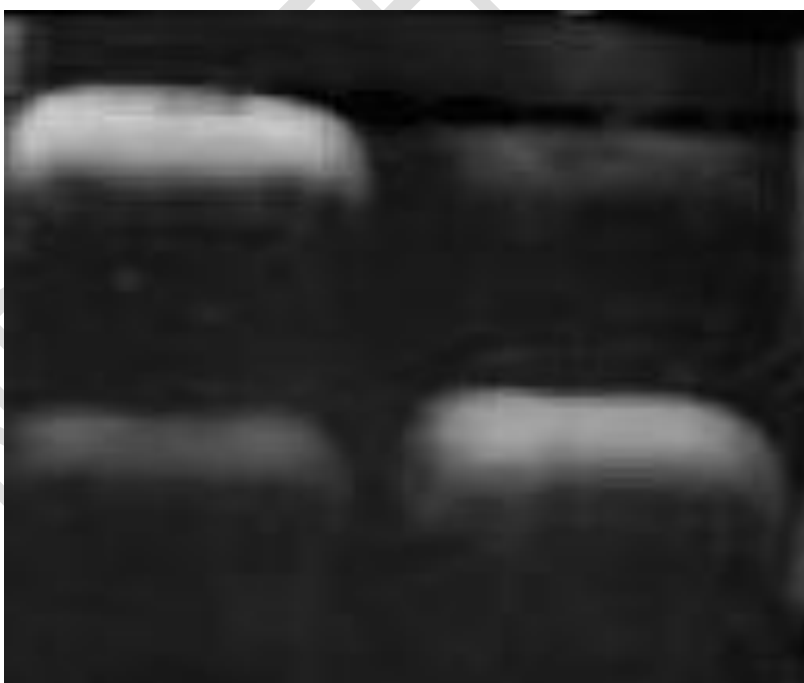
**Fig:1, Fig:2, Fig:3** shows the image of agarose gel of isolated DNA using Simple, PCI and CTAB method of extraction respectively from white edible part of *Cocos nucifera* and flesh of *Borassus flabellifer* fruit.



A- *Borassus flabellifer*;

B- *Cocos nucifera*

**Fig: 1 DNA from white edible part of *Cocos nucifera* and *Borassus flabellifer* using simple method of extraction.**



A- *Borassus flabellifer*;

B- *Cocos nucifera*

**Fig: 2 Agarose gel image of isolated DNA from white edible part of *Cocos nucifera* and *Borassus flabellifer* using phenol-chloroform method of extraction.**



**A- *Borassus flabellifer*;**

**B- *Cocos nucifera***

**Fig: 3 Agarose gel image of isolated DNA from white edible part of *cocosnucifera* and *Borassus flabellifer* using CTAB method of extraction.**

#### **4.DISSION**

According to the considerations provided by Harbrone [25], the complete isolated DNA using various ways of extraction was tested with Keller-killani and DPA tests. TABLE 1 shows the results: validates the existence of DNA. All of the extraction procedures utilised to isolate the materials in the study yielded a positive result in this test [26].

From the results obtained from TABLE: 2 and TABLE: 3 show the absorbance of the isolated DNA at 260nm and 280nm.As per the statement of (Ibrahim et al., 2010) the absorbance at 260nm indicated the presence of DNA. The values of simple-0.988, Edward-0.949, PCI-1.05, CTAB-1.65 (in case of white edible part of *Cocos nucifera*) and the values of simple- 0.497, Edward-0.428, PCI-0.851, CTAB-1.28 (in case of flesh of *Borassus flabellifer* fruit) obtained at 260nm.These data showed that there was a significant amount of DNA in the sample isolated using simple, Edward, PCI, CTAB methods of extraction. Thus the absorbance at 280nm indicated the presence of protein. The values of simple- 0.678,

Edward-1.036, PCI-0.58, CTAB-0.90 (in case of white edible part of *Cocos nucifera*) and the values of simple-0.398, Edward-0.605, PCI-0.490, and CTAB-0.67 (in case of flesh of *Borassus flabellifer* fruit) obtained at 280nm. These data showed that the presence of protein in the isolated DNA by using various methods [19].

The UV absorbance ratio ( $A_{260}/A_{280}$ ) used for determining the protein contamination. For pure preparation of nucleic acid the  $A_{260}/A_{280}$  ratio, which represent protein contamination should be between 1.8 to 2.0, according to Doyle *et al* [27]. The results obtained from the TABLE: 2 and TABLE: 3 show the values of ( $A_{260}/A_{280}$ ) ratio for each of the isolated DNA using both the samples through various methods of extraction.

Among all the method of extraction that has been performed, the Edward method shows less purity because ( $A_{260}/A_{280}$ ) ratio was found to be 0.910, this indicates that the isolated DNA was contaminated with protein. On comparing with other methods, the Edward method was excluded for gel electrophoresis on consideration with poor purity due to very less  $A_{260}/A_{280}$  ratio in case of isolated DNA[22].

The concentration level of isolated DNA from white edible part of *Cocos nucifera* and flesh of *Borassus flabellifer* fruit through various methods of extraction was recorded in the TABLE: 4 and TABLE: 5. From which it was observed that the concentration of DNA isolated using Edward method was very less when compared to other methods (concentration for white edible part of *Cocos nucifera* - 4.7  $\mu\text{g/ml}$ ) and (concentration for flesh of *Brossasus flabellifer* fruit - 2.14 $\mu\text{g/ml}$ ). Also concentration of DNA was found to be higher incase DNA isolated using CTAB method (concentration for white edible part of *Cocos nucifera* - 8.25 $\mu\text{g/ml}$ ) and (concentration for flesh of *Brossasus flabellifer* fruit - 6.45 $\mu\text{g/ml}$ ) [28] . As the CTAB method of extraction results in higher concentration of DNA, a trail of DNA isolation using CTAB method was made by varying the temperature (during the proceedings). Before that all the isolations were made at room temperature.

Thus, the temperature varying studies results in varying the absorbance ratio  $A_{260}/A_{280}$  values and also the concentration level of DNA collectively. As the concentration of DNA was found to be high in the DNA isolation when it was conducted at low temperature (4°C). And the concentration for white edible part of *Cocos nucifera* was found to be 9.7 $\mu\text{g/ml}$  and concentration for flesh of *Brossasus flabellifer* fruit was found to be 10.6 $\mu\text{g/ml}$ ).The concentration of isolated DNA at higher temperature was less on comparison with DNA isolated at room and low temperature using CTAB method it was concluded from the data obtained in TABLE: 4 and TABLE: 5.

Agarose gel results in **Fig: 1, Fig: 2, Fig: 3** shows that the purity level of DNA through effective migration. As Soni *et al.* [18] reveals that the difference in quantity and quality of isolated DNA.

**Fig: 3** depict that the agarose gel of DNA isolated from white edible part of *Cocos nucifera* and flesh of *Borassus flabellifer* using CTAB method as it was indicated that the migration of isolated DNA was clear without any scattering when it was observed under the white and UV illuminator, which reveals that the CTAB method of DNA extraction was most effective and suitable method among all the other methods [20]. As the **Fig: 1 and Fig: 2** depict the agarose gel results of isolated DNA from simple and PCI method which were not effective and clear as the migration of DNA obtained in CTAB method [22].

## 5. CONCLUSION

Finally, it was determined that the white edible part of *Cocos nucifera* fruits outperformed the flesh of *Borassus flabellifer* fruits in terms of absorbance at 260&280nm, absorption ratio (A260/280), and concentration of isolated DNA using gel electrophoresis.

### NOTE:

**The study highlights the efficacy of " Ayurvedic medicine " which is an ancient tradition, used in some parts of India. This ancient concept should be carefully evaluated in the light of modern medical science and can be utilized partially if found suitable**

## References

1. Martirosyan D, Miller E. Bioactive Compounds: The Key to Functional Foods. *Bioactive Compounds in Health and Disease*.2018; 8(7):36-39.
2. Reddy V, Urooj A, Kumar A. Evaluation of antioxidant activity of some plant extracts and their application in biscuits. *Food Chemistry*.2005;90 (1-2): 317–321.
3. Loki AL, Rajamohan T. Hepatoprotective and antioxidant effect of tender coconut water on CCl<sub>4</sub> induced liver injury in rats. *Indian Journal of Biochemistry and Biophysics*.2003; 40:354-357.
4. Manisha DM, Shyamapada M. Coconut (*cocos nucifera* .: *arecaceae*): in health promotion and disease prevention. *Asian Pacific Journal of Tropical Medicine*. 2011; 241-247.
5. Yong WJWH, Ge L, Ng YF, Tan SN. The chemical composition and biological properties of coconut (*Cocos nucifera* L.). *Molecules*.2009; 14: 5144-5164.

6. Vasudevan M, Parle. Evidence of Anti-Demential Potential of Abana®: an Indian Ayurvedic Poly-Herbal Formulation in Rats. *Pharmacologyonline*. 2008; 1: 439-454.
7. Islas FI, Tzec SM. Research opportunities on the coconut (*Cocos nucifera* L.) using new technologies. *South African Journal of Botany*.2021;141:414-420.
8. Kamalakannan K, Balakrishnan V. Antioxidant and hepatoprotective activity of ethanolic and aqueous extracts of *Limonia elephantum* leaves. *Bangladesh Journal of Pharmacology*. 2014; 9: 383-388.
9. Mahesh SP, Patil MB, Ravi Kumar, Sachin RP. Evaluation of anti-inflammatory activity of ethanolic extract of *Borassus flabellifer* L. male flowers (inflorescences) in experimental animals. *Journal of Medicinal Plants Research*.2009; 3(2): 49-54.
10. Khiari R, Mhenni MF, Belgacem MN, Mauret E. Chemical composition and pulping of date palm rachis and *Posidonia oceanica*-A comparison with other wood and non-wood fibre sources. *Bioresource Technology*.2010; 101(2): 775-780.
11. Chayanika S, Najam AS, Vidyath J, Rajinder Kumar Gupta. Screening of nutritional, phytochemical, antioxidant and antibacterial activity of the roots of *Borassus flabellifer* (Asian Palmyra Palm). *Journal of Pharmacognosy and Phytochemistry*. 2014; 3(4): 58-68.
12. Ganesh M, Vasudevan M, Kamalakannan K, Kumar AS, Vinoba M, Ganguly S, Sivakumar T . Anti-inflammatory and Analgesic Effects of *Pongamia glabra* Leaf Gall Extract. *Pharmacology online*. 2008; 1: 497-512.
13. Hosseinpour NA, Nematadeh GH. Introducing a new method of genomic DNA extraction in dicotyledonous plants. *Scholarly Journal of Agricultural Science*. 2013; 2(6): 242-248.
14. Farshad T, Craig SH, Naderia R. A comparison of DNA extraction methods using petunia hybrida tissues. *Journal of Biomolecular Techniques*.2013; 24(3): 113-114.
15. Ibrahim AA, Mohammad AB, Haseeb AK, Anis A, Ali HB, Mohammad, S. A simple method for DNA extraction from mature date palm leaves: impact of sand grinding and composition of lysis buffer. *International Journal of Molecular Science*. 2010; 11: 3149-3157.
16. Nadja SV, Jose Luiz B, Karina PG. A simplified DNA extraction method for PCR analysis of *Camarotella spp.* *Brazilian archives of Biology and technology*.2010; 53(2): 249-252.
17. Sue P, Grant BL, Bernard RB. Modification of a CTAB DNA extraction protocol for plants containing high polysaccharide and polyphenol components. *Plant Molecular Biology Reporter*. 1997; 15(1): 8-15.
18. Soni H, Singhai AK, Swarnkar P, Sharma S, Vimal Kumar. Spectrophotometric method for quantitative estimation of DNA isolated from various parts of *catharanthus roseus*. *International Journal of Pharmacy and Pharmaceutical Sciences*.2011; 3(5): 529-532.

19. Aina VO, Ibrahim MB, Abdulsalami MS, Adewumi AAJ, Peter MW, Isiyaku M. Isolation and estimation of DNA level in Coconut Leaf (*Cocos Nucifera*). Journal of Natural Sciences Research. 2015; 5(2): 93-95.
20. Bhusnure OG, Kuthar VS, Gholve SB, Jadhav PP, Zingade SG, Giram, PS, Spectrophotometric Method for Quantitative Estimation of DNA isolated from various parts of *catharanthus roseus* linn. Journal of Pharmacy Research. 2017; 11(6): 625-628.
21. Mehdi M, Javad, NR, Jafar A. Evaluation of efficiency of four DNA extraction methods in *Apis Mellifera L.* (Hymenoptera:Apidae). Journal of Entomology and Zoology Studies. 2016; 4(5): 576-578.
22. Ramona K, Jorg B, Kathrin K, Isaac MB, Marion M. Data on DNA gel sample load, gelelectrophoresis, PCR and cost analysis. Data in brief. 2018; 16: 732-751.
23. Goldman D, Merrill CR. Silver staining of DNA in polyacrylamide gels: linearity and effect of fragment size. Electrophoresis. 1982; 3: 24-26.
24. Ansorge W, Labeit S. Field gradients improve resolution on DNA sequencing gels. Journal of Biochemical and Biophysical Methods. 1984; 10: 237-243.
25. Harborne JB. 1998. Phytochemical methods: A guide to modern techniques of plant analysis, 3<sup>rd</sup> Edn. London: Chapman & Hall; 1998.
26. Gendimenio GJ, Bouquin PL, Tramosch KM. Diphenylamine colorimetric method for DNA assay: A Shortened procedure by incubating samples at 50°C. Analytical biochemistry. 2008; 74: 771-775.
27. Doyle JJ, Doyle JL. A Rapid DNA Isolation procedure for small quantities of fresh leaf tissue. Phytochemical Bulletin. 1987; 19(1):11-15.
28. Maliyakali EJ. An efficient method for isolation of RNA and DNA from plants containing polyphenolics. Nucleic acids research. 1992; 20: 2381.