

EVALUATION OF ANTI PROLIFERATIVE POTENTIAL OF SOLANUM VIRGINIANUM HUMAN HEPATOCELLULAR CARCINOMA CELL LINE

RUNNING TITLE: Evaluation of anti proliferative potential of solanum virginianum human hepatocellular carcinoma cell line

ABSTRACT

INTRODUCTION

Solanum virginianum commonly known as wild eggplant or nightshade plant, is a prickly herb found in most of the parts of Asia and Australia of the world. It is used by the local people as folk medicines in treating throat infections and other inflammatory problems. Various phytoconstituents have been found, the major constituent is alkaloid. It has a vital role in various traditional as well as medicinal uses for curing internal and external physiological disorders. To determine the evaluation of anti proliferation potential of Solanum Virginianum human hepatocellular carcinoma cell line.

MATERIALS AND METHOD

The effect of solanum virginianum hepG2 cell viability was measured by MTT assay. Briefly, the cells (1×10^4 cells per ml) were seeded in a 96 well microtiter plate (100 per well) with replications. Treatment was conducted for 24 hr with different concentrations (50, 100, 150, 200, 250, 300 μ M) of solanum virginianum. Cell morphological changes were observed in phase contrast microscopy.

RESULT

Cells were treated with solanum virginianum at higher concentration (50, 75, 100, 200, 300 and 400 μ M) for 24 h, and cell viability was evaluated by MTT assay. Data are shown as means \pm SD (n = 3). * compared with the control-blank group, $p < 0.001$.

CONCLUSION

From the results, the extracts were cytotoxic to the hepG2 cells at (60 μ g/ml) concentration and incubation period. However more research is needed to understand the mechanisms of cytotoxicity of the plants.

KEYWORDS: Solanum virginianum, anti proliferative, carcinoma cell line, human hepatocellular

INTRODUCTION

InVitro human cell line models are widely used for cancer pharmacogenomic studies to predict clinical response, to assist generate pharmacogenomic hypotheses for further testing, and to assist in identifying novel mechanisms related to variation in drug response(1). Among cell line model systems, immortalized cell lines like Epstein-Barr virus (EBV)-transformed lymphoblastoid cell lines (LCLs) are used most frequently to check the effect of germline genetic variation on drug efficacy and toxicity(2). Another model, especially in cancer research, uses neoplastic cell lines like the NCI-60 panel. These models are used mainly to see the effect of somatic alterations on response to anticancer therapy. While these cell line model systems are very useful for initial screening, results from integrated analyses of multiple omics data and drug response phenotypes using cell line model systems still must be confirmed by functional validation and mechanistic studies, also as validation studies using clinical samples(3). Future models might include the employment of patient-specific inducible pluripotent stem cells and the incorporation of 3D culture which could further optimize in vitro cell line models to improve their predictive validity(4–6).

Cell culture and cell lines have assumed a crucial role in studying physiological, pathophysiological, and differentiation processes of specific cells(2). It allows the examination of stepwise alterations within the structure, biology, and genetic makeup of the cell under controlled environments(3,7). This is often especially valuable for complex tissues, like the pancreas, which consists of varied cell types, where *In vivo* examination of individual cells is difficult, if not impossible(3). The acute difficulties within the isolation and purification of individual epithelial cells from complex tissues by maintaining their native characteristics have hampered our understanding of their physiological, biological, growth, and differentiation characteristics(4,5).

Medicinal plant *Solanum virginianum* L belongs to the family solanaceae, commonly known as yellow berried nightshade(8). It is coined by different vernacular names like in Marathi called bhui ringani, Sanskrit Kantakari etc. It is frequently distributed in Asia (Saudi Arabia, Yemen, Afghanistan, Iran, China, Bangladesh, India, Nepal, Pakistan, Sri Lanka, Myanmar, Thailand, Vietnam, Indonesia, Malaysia are native countries) and is adventives in Egypt(9,10). In India it's recorded tropical, subtropical and every one four realms(9). Frequently it's been considered as a weed plant but in Ayurveda and folklore medicine since past there are major

reports in literature about its other potentials. The morphologically *Solanum virginianum* is a prickly diffuse bright green perennial herb, somewhat woody at the bottom while the stem is zigzag, and branches are numerous(9–11).

Solanum xanthocarpum is employed by the local people as folk medicines in treating throat infections and other inflammatory problems(12). The fruits are known for several medicinal uses like anthelmintic, antipyretic, laxative, anti-inflammatory, anti-asthmatic and aphrodisiac activities. The fruit paste is applied externally to the affected area for treating pimples and swellings(12–14). The various parts of the plant are reputed in indigenous Hindu Medicine to have high medicinal value in various diseases like cough, asthma, fever, heart disease etc. The plant extract of *S. xanthocarpum* also possesses insecticidal and molluscicidal properties(12,13). Its fruits are eaten as an anthelmintic and for indigestion. Its root is an expectorant, used in Ayurvedic medicine for cough, asthma, and chest pain(15). It has been utilized in Ayurveda for a spread of therapeutic purposes.

Hepatocellular carcinoma (HCC) is one of the most common malignant tumors. It ranks fifth in frequency worldwide among all malignancies and causes 1 million deaths annually, yet its incidence is increasing steadily in various countries(2). Epidemiology studies showed that primary liver cancer is the second mortality in China and it accounts for 53% of all liver cancer deaths worldwide(16). Though with great development in diagnosis and therapy, the prognosis of patients with HCC remains dismal for its high rate of metastasis and recurrence. For patients in advanced stages, the Median survival is less than 6 mo, no matter what kinds of therapy were managed(16,17). So it's urgent to further explore the mechanism of HCC occurrence, progress and metastasis. HCC cell lines are powerful tools. Until now, ten human HCC cell lines have been established, and every cell line has its own characteristics and offers convenience for various experiments(16–19). Stability, homogeneity and straightforward culture are important parameters permanently in cell lines. Previously our team had conducted numerous studies which include clinical trials(20), in vitro studies and case reports.(21) (22) (23) (24) (25) (26) (27) (28) (29) (30) (31) (32) (33) (34)(21) Aim of the study is to determine the evaluation of anti proliferation potential of *Solanum Virginianum* human hepatocellular carcinoma cell line.

MATERIAL AND METHOD

PREPARATION OF THE HERBAL EXTRACT

Leaf powder of *Solanum virginianum* obtained from IMPCOPS (Chennai, India) was used for the present study. About 50 g of *Solanum virginianum* powder was soaked in 500 mL of aqueous solution and kept at room temperature up to 3 days undisturbed. Then the solution was filtered with crude filter paper followed by whatman paper. Fine filtrate was subjected to rota evaporation. After that 3g of the material was obtained. The total aqueous extract was concentrated in a vacuum evaporate and immediately stored at 4 degree Celsius.

CELL CULTURE REAGENTS

DMEM, Growth medium (DMEM with 10% FBS), Phosphate buffered saline (PBS; pH 7.4), Trypsin-EDTA versus glucose solution, 0.89% physiological saline. Human hepatocellular carcinoma (HepG2) cell line was procured from the National centre for cell science (NCCS, Pune), India. The cells were grown in T255 culture flasks containing DMEM medium supplemented with 10% FBS. Upon reaching confluence, the cells were detached using trypsin-EDTA solution.

PASSAGING OF CELL

The medium from the culture flask was aspirated. The flask was rinsed with 2ml of PBS and aspirated again quickly. 1.5 ml of trypsin - EDTA solution was added and incubated at 37 degree celsius for about 2 minutes until cells started detaching. As soon as the cells were detached, transfer pipette into a 15 ml falcon tube and it was centrifuged at 1000 rpm for 5 minutes. The medium was carefully aspirated off and care was taken not to put the pipette tip in the bottom of the tube, where the cells were pelleted. The cells were gently resuspended in the DMEM medium with 10% FBS by pipetting up and down 5-8 times gently. From the cell suspension, a drop was placed on the edge of the cover slip of the neubauer haemocytometer. The drop was led to run under the cover slip by capillary action. Care was taken not to force the liquid and the entry of the air bubble was avoided. Then the cells from E1, E2, E3, E4 and E5 squares were counted under a microscope. The cells were then gently resuspended and transferred to sterile T 75 culture flasks and the volume of medium was made upto 10 ml with growth medium per flask.

TESTING VIABILITY OF CELLS

The viability of HepG2 cells was assessed by trypan blue exclusion test perry et al., (1997). 100µl of trypan blue solution was mixed with 100µl of cells contained in the medium and incubated for 5 min at 37°C . The cells were then washed thrice with saline and 10µl of this suspension was placed in a haemocytometer and viewed under a microscope. The unstained cells represented the viable cells whereas the damaged cells were stained. The number of stained cells was counted and the percentage of viable cells was calculated using the formula:

$$\% \text{ of viability} = \frac{\text{No. of unstained cells}}{\text{Total no. of cells}} \times 100$$

The viability of the cells was found to be between 90-95%.

CELL PROLIFERATION ASSAY

The proliferation of HepG2 was assessed by MTT assay safadi et al.m (2003). The assay is based on the reduction of soluble yellow tetrazolium salt to insoluble purple formazan crystals by metabolically active cells. Only live cells are able to take up the tetrazolium salt. The enzyme (Mitochondrial dehydrogenase) present in the mitochondria of the live cells is able to convert internalised tetrazolium salt to formazan crystals, which are purple in colour. Then the cells are

lysed using a 20% SDS solution, which releases the formazan crystal. These crystals are solubilised by DMF present in the solubilizer. The colour developed is then determined in an ELISA reader at 620 nm.

PROCEDURE

HepG2 cells were placed in 24 well plates at a concentration of 5×10^4 cells/well 24 hours after plating. Cells were washed twice with 500 μ l of serum-free medium and starved by incubating the cells in serum - free medium for an hour at 37°C. After starvation, cells were treated with ION of different concentrations for 24 hours. At the end of treatment, the medium from control and ION treated cells were discarded and 500 μ l of MTT containing DMEM (0.5 mg/ml) was added to each well. The cells were then incubated for 4 h at 37°C in the CO₂ incubator. The MTT containing medium was then discarded and the cells were washed with 1 x PBS (1 ml). The crystals were then dissolved by adding 500 μ l of solubilisation solution and this was mixed properly by pipetting up and down. Spectrophotometric absorbance of the purple blue formazan dye was measured in a microplate reader at 620 nm. The OD of each sample was then compared with the control OD & the graph was plotted.

MORPHOLOGICAL STUDY:

Based on MTT assay, we selected the low and high doses of *Solanum virginianum* for further studies. The characterisation of morphological changes in HepG2 cells treated with low and high doses of *Solanum virginianum* compared to their respective controls were observed under phase contrast microscope.

STATISTICAL ANALYSIS

All data obtained were analysed by student - t -test using MS Excel, represented as mean \pm SD for six animals in each group. The results were compared statistically (SPSS/10 Software package; SPSS Inc., Chicago, IL, USA) using one way ANOVA . Post-hoc testing was performed for inter comparison using the LSD. In all tests, the level of statistical significance was set at $p < 0.05$.

RESULTS AND DISCUSSION

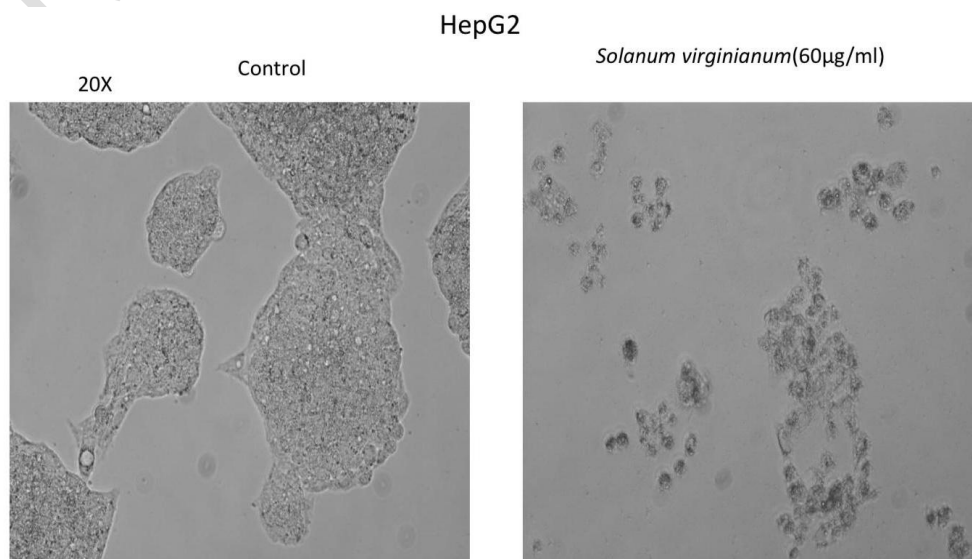


Figure1: Formation of purple formazan crystals in *Solanum virginianum* treated hepatocellular cells (Observed by phase contrast microscopy).

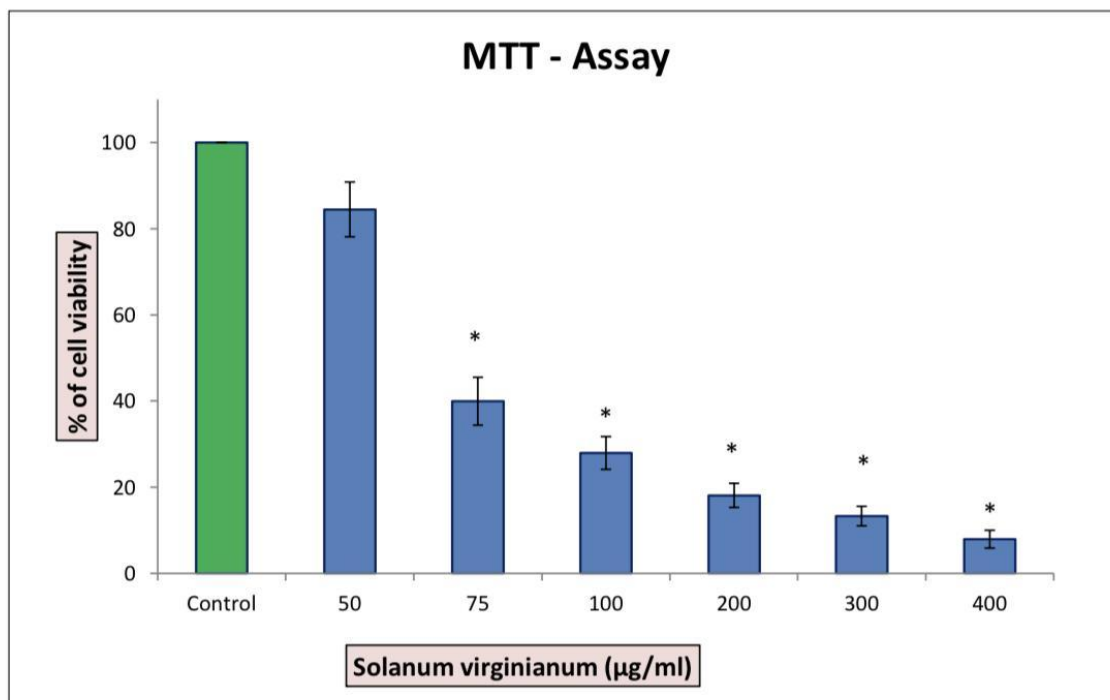


Figure 2: Evaluation of anticancer activity of *Solanum virginianum* on human hepatocellular carcinoma by MTT assay. At a concentration of 60µg/ml, the percentage of the cell viability is 50% (IC 50). * represents statistical significance between control versus treatment group was $p < 0.04$ at 60µg/ml, with $p < 0.05$ level using Student's - Newman-Keuls test, statistically significant.

Currently, there's a rise in the number of safe nutraceutical drugs. The standard pharmaceutical plants are an important economic source of raw materials for the drug industry. Meanwhile, a number of untamed plants revealed antioxidants, antimicrobial, anti-inflammatory, and antitumor properties. Medicinal plant research within the family of solanaceae has revealed anti-cancer efficacy in preclinical models. The asterid dicot genus, belonging to the tribe of the solanaceae

family, Frequently it's been considered as a weed plant but in Ayurveda and folklore medicine since past there are major reports in literature about its other potentials. *Solanum virginianum* has been used formerly as a traditional treatment and it contains various classes of compounds as flavonoids, phenols, glucosinolates, cardiac glycosides, alkaloids, steroids, terpenes, and coumarins. which are consequently, among the foremost potential mediators that might be accustomed treat chronic diseases. These phytochemicals are characterized by atom scavenging skills; therefore, they have been recommended as anti-inflammatory, antibacterial, and antitumor activities. Natural products are a great source of the latest therapeutic agents which are broadly explored as anti-cancer drugs from plants, marine organisms, and microorganisms. Numerous researches have shown that natural components are suitable to prevent and heal cancer by pointing to its vital hallmarks. Some natural herbal drugs also are established to treat HCC. Within the existing study, MTT assay showed that *Solanum virginianum* significantly reduced the cell viability and proliferation of HCC cell line in an exceedingly concentration-dependent manner, suggesting that *Solanum virginianum* could represent a unique candidate agent for curing HCC. Human tumor-derived cell lines are widely used as models for studying cancer biology. They're very useful to know mechanisms that drive resistance and sensitivity to anticancer compounds, particularly when access to tissue samples is prescribed, as in HCC that noninvasive imaging has replaced biopsy for diagnosis. Over the past decade, several large-scale pharmacogenomic studies in neoplastic cell lines, including NCI-60, neoplastic cell Line Encyclopedia, and GDSC (Genomics of Drug Sensitivity in Cancer), have proven their value for biomarker discovery furthermore on uncover mechanism of drug action and determine molecular contexts related to specific tumor vulnerabilities. Although these programs have provided a wealth of publically available data for the scientific community, HCC cell lines were underrepresented in these different datasets. Given the molecular heterogeneity of HCC, the analysis of an outsized panel of cell lines recapitulating HCC diversity is also more informative and will help to translate in vitro pharmacogenomics findings into clinical application. Our team has extensive knowledge and research experience that has translate into high quality publications(35–39),(40),(41),(42),(43),(44),(45),((37,46,47),(48–52) ,(53),(54)

CONCLUSION

To the best of our knowledge, this is the first study illustrating the anti-apoptotic effect of *Solanum virginianum* on the HepG2 cell line(55-(64). It showed effective anticancer activity. Based on the above-mentioned results, this study suggests that *Solanum virginianum* may be a candidate agent for the treatment of human HCC.

COMPETING INTERESTS DISCLAIMER:

Authors have declared that no competing interests exist. The products used for this research are commonly and predominantly use products in our area of research and country. There is absolutely no conflict of interest between the authors and producers of the products because we do not intend to use these products as an avenue for any litigation but for the advancement of

knowledge. Also, the research was not funded by the producing company rather it was funded by personal efforts of the authors.

REFERENCE

1. O'Callaghan YC, Woods JA, O'Brien NM. Characteristics of 7β -hydroxycholesterol-induced cell death in a human monocytic blood cell line, U937, and a human hepatoma cell line, HepG2 [Internet]. Vol. 16, Toxicology in Vitro. 2002. p. 245–51. Available from: [http://dx.doi.org/10.1016/s0278-6915\(02\)00050-9](http://dx.doi.org/10.1016/s0278-6915(02)00050-9)
2. Yano H, Kojiro M, Nakashima T. A new human hepatocellular carcinoma cell line (KYN-1) with a transformation to adenocarcinoma [Internet]. Vol. 22, In Vitro Cellular & Developmental Biology. 1986. p. 637–46. Available from: <http://dx.doi.org/10.1007/bf02623477>
3. Takahashi K, Sawasaki Y. Human endothelial cell line, ECV304, produces pro-urokinase [Internet]. Vol. 27, In Vitro Cellular & Developmental Biology - Animal. 1991. p. 766–8. Available from: <http://dx.doi.org/10.1007/bf02631240>
4. Doyle A, Stacey G. Cell and Cell Line Characterization [Internet]. Encyclopedia of Cell Technology. 2003. Available from: <http://dx.doi.org/10.1002/0471250570.spi031>
5. Inooka S. Production of cytotoxin to a tumor cell in co-cultures of macrophage cell line with Bovine leukemia virus producing cell line [Internet]. Vol. 10, Cell Biology International Reports. 1986. p. 659–65. Available from: [http://dx.doi.org/10.1016/0309-1651\(86\)90143-8](http://dx.doi.org/10.1016/0309-1651(86)90143-8)
6. Selvakumar S, Kumar A. Antiproliferative efficacy of *Tabernaemontana divaricata* against HEP2 cell line and Vero cell line [Internet]. Vol. 11, Pharmacognosy Magazine. 2015. p. 46. Available from: <http://dx.doi.org/10.4103/0973-1296.157682>
7. Institute NC, National Cancer Institute. Cell Line [Internet]. Definitions. 2020. Available from: <http://dx.doi.org/10.32388/2drag8>
8. COMPARATIVE CHEMICAL ANALYSIS OF DIFFERENT PARTS OF SOLANUM VIRGINIANUM [Internet]. Vol. 9, International Journal of Biology, Pharmacy and Allied Sciences. 2020. Available from: <http://dx.doi.org/10.31032/ijbpas/2020/9.11.5247>
9. Devi EC, Devi J. Phytochemical Analysis of *Solanum virginianum* and its Effect on Human Pathogenic Microbes with Special Emphasis on *Salmonella typhi* [Internet]. Vol. 05, Journal of Forensic Toxicology & Pharmacology. 2016. Available from: <http://dx.doi.org/10.4172/2325-9841.1000141>
10. Verma S, Kuhad A, Bhandari R, Prasad SK, Shakya A, Prasad RS, et al. Effect of ethanolic extract of *Solanum virginianum* Linn. on neuropathic pain using chronic constriction injury

rat model and molecular docking studies. *Naunyn Schmiedebergs Arch Pharmacol.* 2020 Sep;393(9):1715–28.

11. Raja W, Nosalova G, Ghosh K, Sivova V, Nosal S, Ray B. In vivo antitussive activity of a pectic arabinogalactan isolated from *Solanum virginianum* L. in Guinea pigs. *J Ethnopharmacol.* 2014 Oct 28;156:41–6.
12. Baskaran B, Sridhar V, Sudharsanam A, Kuppan P. Comparative Modeling Approach Upon Synthesizing Silver Nanoparticles From *Solanum virginianum* [Internet]. Vol. 33, *Oriental Journal of Chemistry.* 2017. p. 2341–6. Available from: <http://dx.doi.org/10.13005/ojc/330525>
13. Morankar P, Jain AP. Extraction, Qualitative and Quantitative Determination of Secondary Metabolites of Aerial Parts of *Clematis heynei* and *Solanum virginianum* [Internet]. Vol. 9, *Journal of Drug Delivery and Therapeutics.* 2019. p. 260–4. Available from: <http://dx.doi.org/10.22270/jddt.v9i1-s.2346>
14. Borgato L, Pisani F, Furini A. Plant regeneration from leaf protoplasts of *Solanum virginianum* L. (Solanaceae) [Internet]. Vol. 88, *Plant Cell, Tissue and Organ Culture.* 2007. p. 247–52. Available from: <http://dx.doi.org/10.1007/s11240-006-9196-x>
15. Khan MMR, Isshiki S. Development of a male sterile eggplant by utilizing the cytoplasm of *Solanum virginianum* and a biparental transmission of chloroplast DNA in backcrossing [Internet]. Vol. 117, *Scientia Horticulturae.* 2008. p. 316–20. Available from: <http://dx.doi.org/10.1016/j.scienta.2008.05.006>
16. Zhou J. Characterization of a taxol-resistant hepatocellular carcinoma cell line (QGY-TR 50) [Internet]. Available from: <http://dx.doi.org/10.14711/thesis-b714022>
17. Alcohol metabolism and neoantigen expression by a hepatocellular carcinoma cell line [Internet]. Vol. 7, *Journal of Hepatology.* 1988. p. S92. Available from: [http://dx.doi.org/10.1016/s0168-8278\(88\)80241-1](http://dx.doi.org/10.1016/s0168-8278(88)80241-1)
18. Kong C-Q, Chen X-C, Qiu G-H, Liang J-C, Wang D, Liu X-Y, et al. Effects of miRNA-140 on the Growth and Clinical Prognosis of SMMC-7721 Hepatocellular Carcinoma Cell Line. *Biomed Res Int.* 2021 Feb 5;2021:6638915.
19. Zou Q-F, Qi-fei ZOU, Ying HOU, Jian LIU, Rui-liang GE, Shen F. Establishment and characterization of a human hepatocellular carcinoma cell line EHBC-512 [Internet]. Vol. 29, *Academic Journal of Second Military Medical University.* 2009. p. 1115–8. Available from: <http://dx.doi.org/10.3724/sp.j.1008.2009.01115>
20. Sivamurthy G, Sundari S. Stress distribution patterns at mini-implant site during retraction and intrusion--a three-dimensional finite element study. *Prog Orthod.* 2016 Jan 18;17:4.
21. Pushpaanjali G, Geetha RV, Lakshmi T. Knowledge and Awareness about Antibiotic Usage and Emerging Drug Resistance Bacteria among Dental Students. *Journal of Pharmaceutical Research International.* 2020 Aug 24;34–42.

22. Aathira CM, Geetha RV, Lakshmi T. Knowledge and Awareness about the Mode of Transmission of Vector Borne Diseases among General Public. *Journal of Pharmaceutical Research International*. 2020 Aug 24;87–96.
23. Baskar K, Lakshmi T. Knowledge, Attitude and Practices Regarding HPV Vaccination among Undergraduate and Postgraduate Dental Students in Chennai. *Journal of Pharmaceutical Research International*. 2020 Aug 25;95–100.
24. Manya Suresh LT. Wound Healing Properties of Aloe Barbadensis Miller-In Vitro Assay. *Journal of Complementary Medicine Research*. 2020;11(5):30–4.
25. First Report on Marine Actinobacterial Diversity around Madras Atomic Power Station (MAPS), India [Internet]. [cited 2021 Aug 31]. Available from: <http://alinteridergisi.com/article/first-report-on-marine-actinobacterial-diversity-around-madras-atomic-power-station-maps-india/>
26. Physicochemical Profile of Acacia Catechu Bark Extract – An in Vitro Stud - *International Journal of Pharmaceutical and Phytopharmacological Research* [Internet]. [cited 2021 Aug 31]. Available from: <https://ejppr.com/article/physicochemical-profile-of-acacia-catechu-bark-extract-an-in-vitro-stud>
27. Lakshmi T. Antifungal Activity of Ficus racemosa Ethanolic Extract against Dermatophytes-An in vitro Study. *Journal of Research in Medical and Dental Science*. 2021;9(2):191–3.
28. Awareness of Drug Abuse among Teenagers - *International Journal of Pharmaceutical and Phytopharmacological Research* [Internet]. [cited 2021 Aug 31]. Available from: <https://ejppr.com/article/awareness-of-drug-abuse-among-teenagers>
29. Mangal CSK, Anitha R, Lakshmi T. Inhibition of Nitric oxide Production and Nitric oxide Synthase Gene Expression in LPS Activated RAW 264 .7 Macrophages by Thyme oleoresin from Thymus vulgaris. *J Young Pharm*. 2018;10(4):481.
30. COX2 Inhibitory Activity of Abutilon Indicum - *Pharmaceutical Research and Allied Sciences* [Internet]. [cited 2021 Aug 31]. Available from: <https://ijpras.com/article/cox2-inhibitory-activity-of-abutilon-indicum>
31. Jibu RM, Geetha RV, Lakshmi T. Isolation, Detection and Molecular Characterization of Staphylococcus aureus from Postoperative Infections. *Journal of Pharmaceutical Research International*. 2020 Aug 24;63–7.
32. Sindhu PK, Thangavelu L, Geetha RV, Rajeshkumar S, Raghunandhakumar S, Roy A. Anorectic drugs: an experimental and clinical perspective – A Review. *Journal of Complementary Medicine Research*. 2020;11(5):106–12.
33. Nivethitha R, Thangavelu L, Geetha RV, Anitha R, RajeshKumar S, Raghunandhakumar S. In Vitro Anticancer Effect of Sesamum Indicum Extract -. *Journal of Complementary Medicine Research*. 2020;11(5):99–105.

34. Mariona P, Roy A, Lakshmi T. Survey on lifestyle and food habits of patients with PCOS and obesity. *Journal of Complementary Medicine Research*. 2020;11(5):93–8.
35. Rajeshkumar S, Kumar SV, Ramaiah A, Agarwal H, Lakshmi T, Roopan SM. Biosynthesis of zinc oxide nanoparticles using *Mangifera indica* leaves and evaluation of their antioxidant and cytotoxic properties in lung cancer (A549) cells. *Enzyme Microb Technol*. 2018 Oct;117:91–5.
36. Nandhini NT, Rajeshkumar S, Mythili S. The possible mechanism of eco-friendly synthesized nanoparticles on hazardous dyes degradation. *Biocatal Agric Biotechnol*. 2019 May 1;19:101138.
37. Vairavel M, Devaraj E, Shanmugam R. An eco-friendly synthesis of *Enterococcus* sp.–mediated gold nanoparticle induces cytotoxicity in human colorectal cancer cells. *Environ Sci Pollut Res*. 2020 Mar 1;27(8):8166–75.
38. Gomathi M, Prakasam A, Rajkumar PV, Rajeshkumar S, Chandrasekaran R, Anbarasan PM. Green synthesis of silver nanoparticles using *Gymnema sylvestre* leaf extract and evaluation of its antibacterial activity [Internet]. Vol. 32, *South African Journal of Chemical Engineering*. 2020. p. 1–4. Available from: <http://dx.doi.org/10.1016/j.sajce.2019.11.005>
39. Rajasekaran S, Damodharan D, Gopal K, Rajesh Kumar B, De Poures MV. Collective influence of 1-decanol addition, injection pressure and EGR on diesel engine characteristics fueled with diesel/LDPE oil blends. *Fuel*. 2020 Oct 1;277:118166.
40. Santhoshkumar J, Sowmya B, Venkat Kumar S, Rajeshkumar S. Toxicology evaluation and antidermatophytic activity of silver nanoparticles synthesized using leaf extract of *Passiflora caerulea*. *S Afr J Chem Eng*. 2019 Jul;29:17–23.
41. Raj R K, D E, S R. β -Sitosterol-assisted silver nanoparticles activates Nrf2 and triggers mitochondrial apoptosis via oxidative stress in human hepatocellular cancer cell line. *J Biomed Mater Res A*. 2020 Sep;108(9):1899–908.
42. Saravanan M, Arokiyaraj S, Lakshmi T, Pugazhendhi A. Synthesis of silver nanoparticles from *Phenerochaete chrysosporium* (MTCC-787) and their antibacterial activity against human pathogenic bacteria. *Microb Pathog*. 2018 Apr;117:68–72.
43. Gheena S, Ezhilarasan D. Syringic acid triggers reactive oxygen species–mediated cytotoxicity in HepG2 cells. *Hum Exp Toxicol*. 2019 Jun 1;38(6):694–702.
44. Ezhilarasan D, Sokal E, Najimi M. Hepatic fibrosis: It is time to go with hepatic stellate cell-specific therapeutic targets. *Hepatobiliary Pancreat Dis Int*. 2018 Jun;17(3):192–7.
45. Ezhilarasan D. Oxidative stress is bane in chronic liver diseases: Clinical and experimental perspective. *Arab J Gastroenterol*. 2018 Jun;19(2):56–64.
46. Gomathi AC, Xavier Rajarathinam SR, Mohammed Sadiq A, Rajeshkumar S. Anticancer activity of silver nanoparticles synthesized using aqueous fruit shell extract of *Tamarindus*

- indica on MCF-7 human breast cancer cell line. *J Drug Deliv Sci Technol*. 2020 Feb 1;55:101376.
47. Dua K, Wadhwa R, Singhvi G, Rapalli V, Shukla SD, Shastri MD, et al. The potential of siRNA based drug delivery in respiratory disorders: Recent advances and progress. *Drug Dev Res*. 2019 Sep;80(6):714–30.
 48. Ramesh A, Varghese S, Jayakumar ND, Malaiappan S. Comparative estimation of sulfiredoxin levels between chronic periodontitis and healthy patients - A case-control study. *J Periodontol*. 2018 Oct;89(10):1241–8.
 49. Arumugam P, George R, Jayaseelan VP. Aberrations of m6A regulators are associated with tumorigenesis and metastasis in head and neck squamous cell carcinoma. *Arch Oral Biol*. 2021 Feb;122:105030.
 50. Joseph B, Prasanth CS. Is photodynamic therapy a viable antiviral weapon against COVID-19 in dentistry? *Oral Surg Oral Med Oral Pathol Oral Radiol*. 2021 Jul;132(1):118–9.
 51. Ezhilarasan D, Apoorva VS, Ashok Vardhan N. Syzygium cumini extract induced reactive oxygen species-mediated apoptosis in human oral squamous carcinoma cells. *J Oral Pathol Med*. 2019 Feb;48(2):115–21.
 52. Duraisamy R, Krishnan CS, Ramasubramanian H, Sampathkumar J, Mariappan S, Navarasampatti Sivaprakasam A. Compatibility of Nonoriginal Abutments With Implants: Evaluation of Microgap at the Implant-Abutment Interface, With Original and Nonoriginal Abutments. *Implant Dent*. 2019 Jun;28(3):289–95.
 53. Gnanavel V, Roopan SM, Rajeshkumar S. Aquaculture: An overview of chemical ecology of seaweeds (food species) in natural products. *Aquaculture*. 2019 May 30;507:1–6.
 54. Markov A, Thangavelu L, Aravindhyan S, Zekiy AO, Jarahian M, Chartrand MS, et al. Mesenchymal stem/stromal cells as a valuable source for the treatment of immune-mediated disorders. *Stem Cell Res Ther*. 2021 Mar 18;12(1):192.
 55. Rajendran R, Kunjusankaran RN, Sandhya R, Anilkumar A, Santhosh R, Patil SR. Comparative Evaluation of Remineralizing Potential of a Paste Containing Bioactive Glass and a Topical Cream Containing Casein Phosphopeptide-Amorphous Calcium Phosphate: An in Vitro Study. *Pesqui Bras Odontopediatria Clin Integr*. 2019 Mar 12;19(0):4668.
 56. Ashok BS, Ajith TA, Sivanesan S. Hypoxia-inducible factors as neuroprotective agent in Alzheimer's disease. *Clin Exp Pharmacol Physiol* [Internet]. 2017 Mar [cited 2021 Sep 15];44(3). Available from: <https://pubmed.ncbi.nlm.nih.gov/28004401/>
 57. Malli SN, Selvarasu K, Jk V, Nandakumar M, Selvam D. Concentrated Growth Factors as an Ingenious Biomaterial in Regeneration of Bony Defects after Periapical Surgery: A Report of Two Cases. *Case Rep Dent* [Internet]. 2019 Jan 22 [cited 2021 Sep 15];2019. Available from: <https://pubmed.ncbi.nlm.nih.gov/30805222/>

58. Mohan M, Jagannathan N. Oral field cancerization: an update on current concepts. *Oncol Rev* [Internet]. 2014 Jun 30 [cited 2021 Sep 15];8(1). Available from: <https://pubmed.ncbi.nlm.nih.gov/25992232/>
59. Menon S, Ks SD, R S, S R, Vk S. Selenium nanoparticles: A potent chemotherapeutic agent and an elucidation of its mechanism. *Colloids Surf B Biointerfaces* [Internet]. 2018 Oct 1 [cited 2021 Sep 15];170. Available from: <https://pubmed.ncbi.nlm.nih.gov/29936381/>
60. Samuel SR, Acharya S, Rao JC. School Interventions-based Prevention of Early-Childhood Caries among 3-5-year-old children from very low socioeconomic status: Two-year randomized trial. *J Public Health Dent* [Internet]. 2020 Jan [cited 2021 Sep 15];80(1). Available from: <https://pubmed.ncbi.nlm.nih.gov/31710096/>
61. Praveen K, Narayanan V, Muthusekhar MR, Baig MF. Hypotensive anaesthesia and blood loss in orthognathic surgery: a clinical study. *Br J Oral Maxillofac Surg* [Internet]. 2001 Apr [cited 2021 Sep 15];39(2). Available from: <https://pubmed.ncbi.nlm.nih.gov/11286449/>
62. Neelakantan P, Subbarao C, Subbarao CV, De-Deus G, Zehnder M. The impact of root dentine conditioning on sealing ability and push-out bond strength of an epoxy resin root canal sealer. *Int Endod J* [Internet]. 2011 Jun [cited 2021 Sep 15];44(6). Available from: <https://pubmed.ncbi.nlm.nih.gov/21255047/>
63. Oligonucleotide therapy: An emerging focus area for drug delivery in chronic inflammatory respiratory diseases. *Chem Biol Interact*. 2019 Aug 1;308:206–15.
64. Kumar MS, Vamsi G, Sripriya R, Sehgal PK. Expression of matrix metalloproteinases (MMP-8 and -9) in chronic periodontitis patients with and without diabetes mellitus. *J Periodontol*. 2006 Nov;77(11):1803–8.