

Original Research Article

Studies of Effects of Hydrochloric Acid Treatment on the Chemical Composition of Kaolin Clay

ABSTRACT

The effect of hydrochloric acid treatment on the chemical composition of kaolin clay from Awgu Town in Awgu Local Government Area of Enugu State was studied in this work. The raw clay was mined, soaked in water to remove dirt, and sun-dried, followed by grinding to a particle size of 0.075mm. The fine sized sample was then treated with 1M hydrochloric acid. Characterization of the untreated and treated clay samples with x-ray fluorescence (XRF) spectrometry revealed that the samples consist mainly of silica (SiO_2), alumina (Al_2O_3), and iron oxide (Fe_2O_3) with potassium oxide (K_2O), titanium oxide (TiO_2), manganese oxide (MnO) and other oxides occurring as minors. The study further revealed that the percentage composition of SiO_2 , Al_2O_3 and MnO increased with hydrochloric acid treatment, while Al_2O_3 , TiO_2 and K_2O were removed/decreased appreciably with hydrochloric acid treatment.

Keywords: Acid treatment, Hydrochloric acid, Kaolin, Treated clay, XRF,

1. INTRODUCTION

Most clay materials spread across different regions of the earth have been identified by many researchers as kaolin [1], [2], [3], [4], [11]. Kaolin is a soft, earthy clay material produced by chemical weathering of aluminum silicate minerals like feldspar [2]. Kaolin has a pink, orange or red rust hue depending on the quantity of iron oxide present in it. Clay materials, particularly kaolin, has been widely used for a large number of applications such as in ceramics, paper coating, paper filling, paint extenders, rubber filler, cracking catalyst or cements, oil refinery and water treatment [5].

The chemical and physical behaviors of clay minerals, due to their adsorbing and catalytic properties have been reported [6], [7]. The nature of the external surface of the clay minerals which can be improved by treatment techniques is responsible for this behavior. Two broad treatment methods of clay minerals have been studied by different researchers such as physical and chemical treatments/modifications [6], [7]. According to [6], chemical treatment technique (usually done by acids, bases or organic compounds) involves altering the structure, surface functional groups and surface area of clays, while physical treatment (also known as thermal treatment) involves altering the chemical composition and crystalline structure of clays by the effects of high temperature.

Studies on the acid treatment of kaolin clay have been reported [1], [2], [3], [4], [6]. The different acids types suitable for chemical treatment of clays include hydrochloric, sulfuric and nitric acids and organic acids such as acetic, citric, oxalic and lactic. Out of all these group of acids, hydrochloric (HCl) and sulfuric acids have gained prominence due to their

strong attraction for process factors and high results in specific surface area, porosity and good adsorption efficiency [8].

[6], [8], [9], have reported on the acid treatment of kaolin clays from different parts around the world and their subsequent characterization. However, studies on XRF characterization of untreated and HCl treated kaolin clay from Awgu Town of Enugu State, Nigeria, have not been documented to the best of our knowledge. Therefore, in this work, kaolin clay was treated with HCl in order to reveal and analyze the effects of the acid treatment on the following dominant oxides: SiO_2 , Al_2O_3 , Fe_2O_3 , K_2O , TiO_2 and MnO .

2. EXPERIMENTAL DETAILS

2.1 Sample preparation

The local clay from Awgu was mined from pits dug to depths of 1.5m and soaked in water for 72hours. It was stirred every 24hours to release organic materials. Water was then decanted from it. The concentrated clay was then transferred to a jeans bag for dewatering, after which the resulting sample was spread on a pan and sun-dried for a period of 5days. The dried clay was ground to a fine size of 0.075mm with mortar and pestle while continuously sieving with a 75 μm Tyler sieve until a homogenous sample was obtained.

2.2 Acid treatment

Hydrochloric acid was used for the acid treatment/activation of the clay through leaching process. One mole of hydrochloric acid was prepared in a 1000ml of volumetric flask. 50g of the fine homogeneous clay sample was poured into a flat bottom flask, and then 250ml of 1MHCl was added to it. The mixture was heated for 1 hour at a temperature of 95°C on a magnetic stirrer. After 1 hour, the mixture was washed several times with distilled water so as to wash the acid out completely and acid removal was confirmed by testing it with a blue litmus paper. The resulting slurry was filtered, sun-dried and ground to powder form.

2.3 Characterization of the clay sample

The XRF characterization was performed to know the chemical composition of the minerals that are present in the untreated and hydrochloric acid treated clay samples. X-ray fluorescence spectrometer (Philips PW 2400) was used to determine the chemical composition of the untreated and treated clay. The sample cups were assembled using oxford instruments, Poly-M XRF sample film. The powdered samples were pressed in the cups using a set of dies and a press machine. Then, the cups containing the samples were placed on the auto sampler using individual and removable secondary safety windows, which is provided in case of samples leakage. The samples were irradiated with high energy x-rays from the controlled x-ray tube. After the first few seconds of measurements, live results were displaced, allowing a rapid assessment of product quality to be made. The results were continually updated till the end of the measurements. XRF peaks with varying intensities were created and presented in the spectrum – graphical representation of x-ray intensity as a function of peaks (Figures 1 and 2).

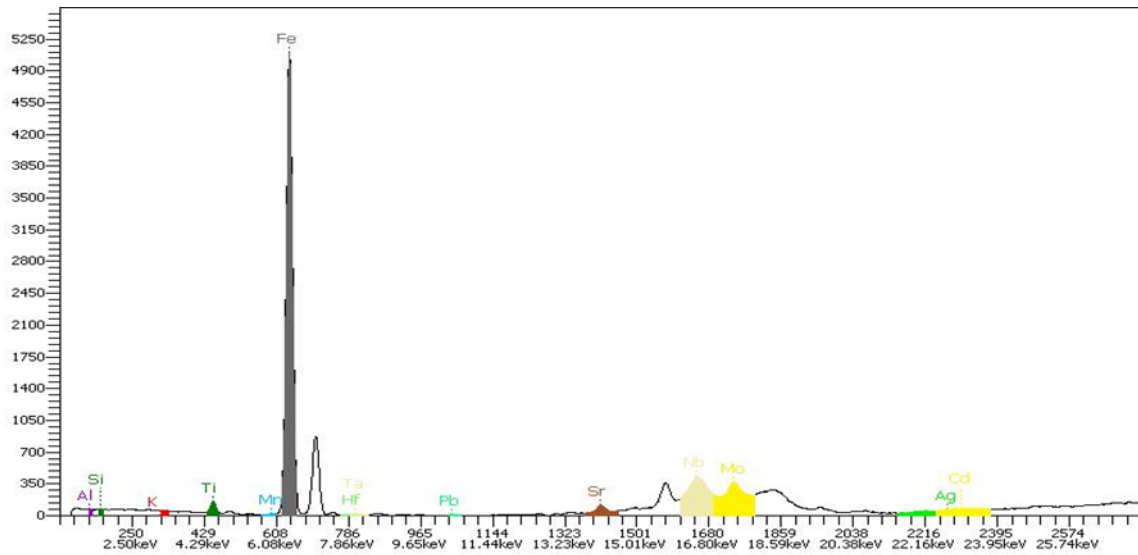


Fig. 1. XRF Spectrum of the Untreated Clay

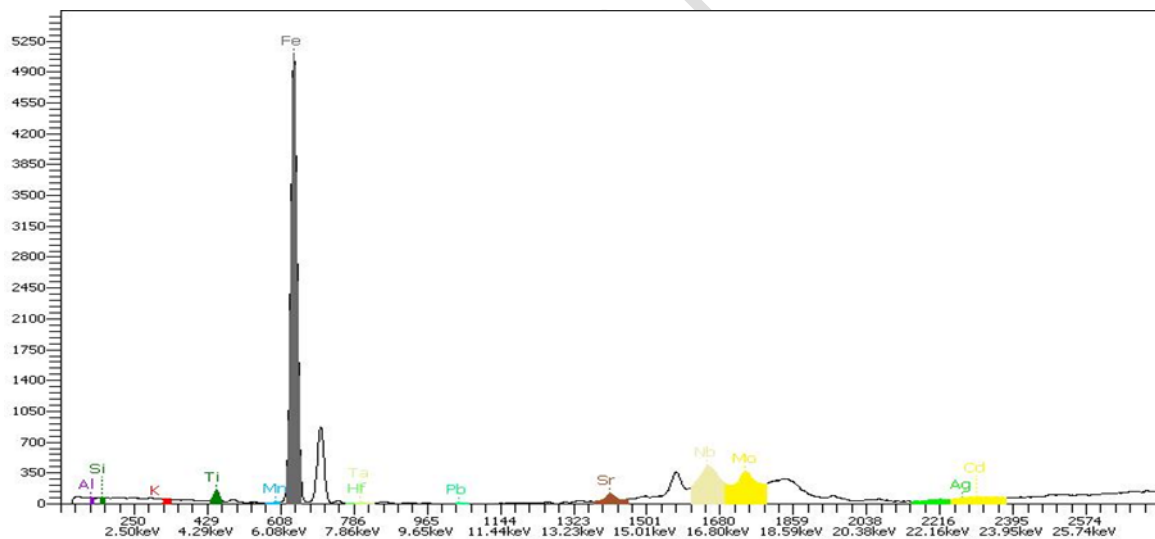


Fig. 2. XRF Spectrum of the treated Clay

3. RESULTS AND DISCUSSION

Figures 1 and 2 show the different peaks and /or spectral line patterns of different mineral elements in the clay samples. By interpretation, the following elements are traceable in both spectra; Al, Si, K, Ti, Mn, Fe, Hf, Pb, Sr, Ag, Cd, etc, with Fe having the highest peak/intensity. The number of elemental minerals measured were as detected by equipment in line with the assertions of previous authors [10], [11].

Table 1. The XRF results of the untreated and treated clay samples

| Oxides | Untreated clay (%) | Treated clay (%) |
|--------------------------------|--------------------|------------------|
| Al ₂ O ₃ | 21.42 | 14.45 |
| SiO ₂ | 64.26 | 68.54 |
| K ₂ O | 0.19 | 0.05 |
| TiO ₂ | 0.78 | 0.69 |
| MnO | 0.01 | 0.08 |
| Fe ₂ O ₃ | 12.54 | 13.36 |
| NiO | <0.01 | - |
| CuO | <0.01 | - |
| SrO | 0.01 | 0.01 |
| Nb ₂ O ₅ | 0.01 | 0.01 |
| MoO ₃ | 0.03 | 0.06 |
| Ag ₂ O | 0.02 | 0.01 |
| CdO | 0.06 | 0.08 |
| Sb ₂ O ₃ | <0.01 | - |
| HfO ₂ | <0.01 | <0.01 |
| PbO | <0.01 | <0.01 |
| TaO | - | <0.01 |
| Total | 99.27 | 97.34 |

The XRF results of the untreated and treated clay samples are presented in Table 1. From Table 1, it could be observed that the dominant oxides for both clay samples are Al₂O₃, SiO₂ and Fe₂O₃. These oxides have a combined percentage composition of 98.22% and 96.35% for the untreated and treated clay samples, respectively. The total oxide compositions for the untreated and treated clay samples sum up to 99.27% and 97.34% respectively. This decrease in total oxide composition is an indication that activation of the clay with HCl enhanced its chemical composition. The very high percentage of SiO₂ for the untreated and treated clay samples indicate that the clay samples are more of silica (quartz) which is typical of kaolin [12]. As revealed in Table 1, SiO₂ is not removed, but increased. This increase could be as a result of the depletion of the cation (Si⁴⁺) from the interlayer and octahedral sheet of the clay [12]. Also, the difficulty in the removal of silica (SiO₂) may be as a result of the position it occupies in the clay structure [2]. Al₂O₃, K₂O and TiO₂ present in the untreated clay sample were appreciably removed as can be seen from the results of the treated clay sample. The iron oxide (Fe₂O₃) and manganese oxide (MnO) present in the untreated clay sample were not removed but rather increased. This could be as a result of increase in surface area of the clay which brought out the metals (Fe and Mn) and made them easier for leaching [13]. It is important to note that such high level of iron oxide usually imparts rust hue or reddish colouration to clay when fired, hence, making it very attractive as a ceramic raw material [14].

4.0 CONCLUSION

From the analyses of the experimental results, the following conclusions were made:

- i. Untreated and treated kaolin clay samples contain the following prominent oxides: SiO₂, Al₂O₃, K₂O, TiO₂, Fe₂O₃, MnO and others in traces.
- ii. Al₂O₃, K₂O and TiO₂ present in the untreated clay sample were appreciably removed
- iii. The silica (SiO₂), iron oxide (Fe₂O₃) and manganese oxide (MnO) present in the untreated clay sample were not removed but rather increased.
- iv. Acid treatment using HCl enhanced the chemical composition of kaolin clay.

REFERENCES

- [1] Poppleton HO, Sawyer DL. Hydrochloric acid leaching of calcined kaolin to produce alumina. *Instruments and Experimental Techniques*. 1977;2:103-114.
- [2] Eze KA, Nwadiogbu JO, Nwamkwere ET. Effect of acid treatments on the physiochemical properties of kaolin clay. *Archives of Applied Science Research*. 2012;4(2):792-794.
- [3] Ambikadevi V, Lalithambika M. Effects of organic acids on ferric iron removal from iron-stained kaolinite. *Appl. Clay Sci*. 2000;16:133-145.
- [4] Azinta C O, Nevo C O. Evaluation of the chemical composition of awgu clay deposit for its industrial potential. *Journal of Materials Science Research and Reviews*. 2021;8(4):180-184.
- [5] Raw Mineral research and Development Council (RMRDC). *Non-metallic Mineral Endowment in Nigeria*. 12-17.
- [6] Kumar S, Panda AK, Singh RK. Preparation and characterization of acids and alkali treated kaolin clay. *Bulletin of Chemical Reaction Engineering and Catalysis*. 2013;8(1):61-69. DOI: 10.9767/bcrec.81.4530.61-69
- [7] Ravichandran J, Sivasanka B. Properties and catalytic activity of acid modified montmorillonite and vermiculite. *Clays and clay minerals*. 1997;45:854-858.
- [8] Belver C, Munoz MAB, Vicente MA. Chemical activation of a kaolinite under acid and alkaline conditions. *Chemistry of Materials*. 2002;14:2033-2043.
- [9] Ajemba RO, Onukwuli OD. Studies on the effects of hydrochloric acid-leaching on the structural and adsorptive performance of Nteje (Nigeria) clay. *Int. J. Eng. Res. Tech*. 2012;1(3):1-11.
- [10] Moore D, Raynold RC. *X-ray Diffraction and the identification and analysis of clay minerals*. Oxford University Press, New York. 1997.
- [11] Umbugadu AA, Igwe O. Mineralogical and major oxide characterization of Panyan clays, North-central Nigeria. *Int. J. Phy. Sci*. 2019;14(11):108-115.
- [12] Motlagh MMK, Youzbashi AA, Rigi ZA. Effect of acid activation on structural and bleaching properties of a bentonite. *Iranian Journal of Materials Science and Engineering*. 2011;8(4):50-56.
- [13] Udeigwe TK, Eichmann M, Eze NP, Ogendi GM, Morris NM, Riley RM. Copper micronutrient fixation kinetics and interactions with soil constituents in semi-arid alkaline soils. *Soil Science and Plant Nutrition*. 2016;62(3).
- [14] Nnuka EE, Agbo JE. Evaluation of refractory characteristics of Kwa clay deposit in Plateau State. *N.S.E. Technical Transaction*. 2003;32-59.