

MICROWAVE RADIATION TECHNOLOGY AS A NON-DESTRUCTIVE TESTING METHOD FOR DETECTING BLACK HEART IN POTATO

ABSTRACT

In recent decades, food scientists and engineers have attempted to develop an improve technologies that can detect the internal damages of agricultural produce under postharvest conditions using a various methods of destructive and non-destructive technologies. This study presents the technique of microwave scanning as a non-destructive technology for application in agriculture to detect black hearth in potato tubers in a non-destructive way. A bi-static antenna configuration of microwave scanning setup operating at 2.45GHz was assembled, with a customize slotted rectangular microstrip antenna designed and fabricated for this purpose used as a microwave sensor and a MiniVNA double as a RF generator and S-parameter measurement was used to measured transmission coefficient (S_{21}) through samples of real potato, the analysis was based on the differences in the wave spectrum obtained. The result obtained from the analysis of wave spectrum shows that there is a significant difference up to 5dB in the wave

pattern of a good potato sample and the sample with internal damages. Hence, the method can be adequately used as a scientific way of grading and sorting a batch of potato non-destructively.

Keywords: Non-destructive testing, Microwave Scanning, microstrip antenna, S-parameters.

1.0 INTRODUCTION

The idea of Non-Destructive Testing (NDT) is all about determining the existence of form of imperfections in bulk materials or assemblies of component without impairing the integrity or functionality of the inspected objects [1]

This non-destructive Testing (NDT) is not only needed in medical but also in industrial processes, geology, agriculture, security and other walks of life. For this purpose scientists have developed various tomography technologies that are applicable for each need. Some of NDT technologies that have been developed for use in area of agricultural includes; Computerized Tomography (CT) that is based on gamma ray radiation [2], Magnetic Resonance Imaging (MRI) based on ultra-high magnetic fields [3], NMR based on the spins of atomic nuclei [4] Positron Emission Tomography (PET) based on nuclear particle radiation [5], ultrasonography that uses high frequency sound waves [6] and microwave imaging using microwave frequency [7] to mention few. But from all these mentioned non-invasive and non-destructive methods for examining the internal structure of materials, microwave imaging (MWI) is quite well established and stands out; because it has the capability to be applied to different objects with minimal restrictions [8]. And it's non-invasive, non-ionizing, non-selective of conductive and non-conductive surfaces and cost-effective of microwave imaging systems has made it a promising technology

Microwave imaging can be defined as morphological studying of internal structure of an object by irradiating the object with low power Electromagnetic Wave at microwave frequencies [9]. Microwaves frequencies range from 300 MHz to 300 GHz range in the electromagnetic spectrum [10]. These Electromagnetic waves have some unique characteristics that make them suitable for subsurface sensing purposes. Characteristics such long wavelengths which make it to have ability to penetrate a wide variety of optically opaque and non-conducting materials of various composites such as ceramics, concrete, wood, foam, soil, biological tissues and ability to interact with their internal structure [11].

Potato (*Solanum tuberosum L.*) is the fourth most important food crop in the world after corn, wheat, and rice [12]. One of the numerous hurdles in potato farming is the inability to preserve the quality of freshness of the produce to the end consumers. Post-harvest losses of produce are many, the major ones is the quality deterioration attributed to physiological and mechanical damage and combinations of several organisms action on the produce [12]. At present, the adopted method in use for detecting black heart and sorting in a batch of potatoes is solely based on conventional method of statistical sampling and manually destructive test process, It's estimated that these destructive tests accounts for 0.5% of the post-harvest wastage volume, with a net value of more than £10 million annually [13] which is substantial economic losses yearly. This conventional method for the internal quality assessment of potato tubers is always laborious, costly, destructive and time-consuming, not only that; it is also subjective and inconsistent. As a means to reduce such wastage; technologies for non-destructive testing (NDT) of internal quality of potato tubers and classification with maximum safety and their automation have become important in recent decades.

Although, possible technologies capable of NDT beneath a potato's surface exist, but they come with some issues that is limiting their usage such as; safety issues e.g. x-rays [14], operational or throughput limitations e.g. ultrasound [15], complexity of the system e.g. hyperspectral imaging [16] and high cost effective e.g. Near-infrared reflectance spectra (400-1200 nm) & visible laser [17] etc. A better alternative is microwave imaging [18] technique due to its low cost, safety, high accuracy, versatile, compactness, non-contact and environmental friendly.

1.1 Concept of Microwave Imaging

The concept behind microwave imaging application for detecting internal structure of an object is based on the mapping of the electrical property distributions in the body when that body is subjected to microwave frequency. The difference in mapping (in the case of biological tissues) of affected/bad tissue from good tissue is based on the difference in tissues dielectric properties which depend on content of water within the tissues [19]. The increases of water content equate an increase in values of dielectric constants and the conductivity and verse versa.

The dielectric properties of biological materials indicate how much microwave energy is absorbed, transmitted and reflected during interaction between the tissues and electromagnetic energy. It has been established that microwave spectrum of defected tissues changes significantly when compared to the microwave spectrum of normal tissue [20],

These properties can be defined in terms of the complex relative permittivity, $\epsilon = \epsilon' - j \epsilon''$, where the real part ϵ' is known as the dielectric constant and the imaginary part ϵ'' is called dielectric loss factor; ϵ' in the real part is associated with energy storage in the electric field in the material; while ϵ'' in the imaginary is associated with the energy lost or the energy converted to heat in the material during the process of irradiation.

Several computer models have been developed to investigate the interaction of E.M waves and biological tissues. Debye and Cole-Cole models are the most commonly used models. The Debye model simulates the frequency dependence of DPs of tissues sufficiently [21, 22]:

1.2 Dielectric Properties of Potatoes

As reported in [13] due to the high water content of the potato; normal potato tissue has a high value of D.P and the defected/damaged tissue will have a lower D.P value compare to the normal; in which the difference can be detected when the tissues are subjected to E.M waves; which is the anchor that holds theory behind this research

When electromagnetic waves radiated from the transmitting antenna and directly travel through the biological tissues; a significant portion of the radiated power carrying by electromagnetic waves is absorbed by the tissue. Specific absorption rate (SAR) is a measure of the rate at which energy is absorbed by biological tissue when exposed to an EM field in RF band. It is defined as power absorbed per unit mass of tissue [43] given as $SAR = \sigma \left[\frac{|E|^2}{\rho} \right]$ Where; SAR is the Specific Absorption Rate (W/Kg), 'E' denotes electric field (V/m), 'σ' is the electrical conductivity (S/m) and 'ρ' gives the tissue density (kg/m³).

Microwave imaging is conducted by transmitting a sequence of electromagnetic waves through the object to be image and measuring the scattered field at the perimeter of the object. The electromagnetic signals is fed to the transmitting antenna(s) and captured by the receiving antenna(s), these signals are characterized by scattering parameters (S- parameters) at the terminal planes to which the two-port vector network analyzer (VNA) is calibrated.

few of bulk of related work reported in literature that have been used to determine the internal defects in potato are [6],[23] used ultrasonic sound technique, the first author method was capable of detecting hollow heart cavities greater than 0.5 cm³, an accuracy of 98% was recorded by using a lower frequency (50 kHz). And the second; maximum accuracy of 94.5% in the separation of intact from damaged potatoes was achieved with the 25 kHz.

Another researcher [16] presents a good method to detect the presence of the hollow heart, an internal disorder of the potato tubers, using hyperspectral imaging technology in the infrared region. The results obtained show that hyperspectral imaging technology was able to achieve an accuracy of 89.1% of correct classification.

A transmission spectrum system in the visible/near infrared (Vis/NIR) region of 513–850nm was developed by author in [24] to determined blackheart in potatoes. Principal Component Analysis (PCA) was used to select sensitive wavelengths; and Partial Least Squares-Linear Discriminant Analysis (PLS-LDA) was used to develop classification models. The analysis of the results showed that the overall classification rate by PLS-LDA method decreased from 97.11% to 96.82% in calibration set and from 97.11% to 96.53% in validation set, which was acceptable to classify blackheart potato from normal ones.

Publication presented in [13] is a first investigation into the use of microwaves imaging method for the non-destructive testing to determine the presence of blackheart cavities in potato. The author simulates a spherical potato with and without a cavity using CST. Simulations results show that; changes to how microwaves propagate through a potato caused by a cavity can produce measurable changes in transmission coefficient S_{21} at the potato's surface of up to 26 dB. Also, lab-based readings of the change in S_{21} caused by a phantom cavity submerged in a

potato phantom liquid confirms the results of the simulation but with much reduction in S_{21} power obtain in the order of 0.1 dB

2.0 MATERIALS AND METHOD

Materials used to carry out this research work are raw potato samples, VNA the main microwave equipment, our customize antenna and analysis software.

2.1 Assembling of Microwave Scanning System

The architecture and different component of our scanning system are depicted in figure 1

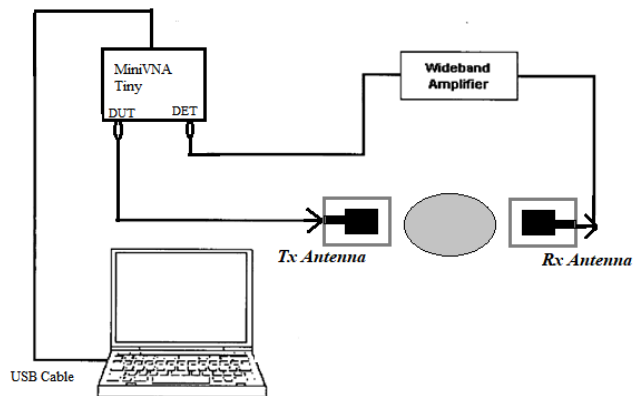


Figure1. Block diagram imaging system

The microwave scanning system adopted in this work was established in [25], [26], the system operates on the microwave radar image acquisition principle, it consists of a bi-static antenna configuration, a VNA that serves as a RF signal source and S-parameter measurement, a microstrip antenna used for transmitting and receiving RF signals, but the receiving antenna is couple to the VNA with wide band microwave amplifier to boost the received signal in order to have a substantiate amount of received power due to the power level of VNA available.

For the practical assembling of the microwave scanning setup, our customized slotted rectangular microstrip antenna designed and fabricated for this purpose is used as a transmitting and receiving antenna. The antennas were mounted upon brackets, one for transmitting and other for receiving, both vertically facing each other. To ensure that the setup is free from any near field effects, the antenna's separation distance is determined by the formula $r = \frac{2D^2}{\lambda}$ Where, D is the maximum linear dimension of the antenna λ is the operating wavelength. With a frequency of 2.45 GHz and maximum dimension of the antenna is 10.2 cm, a far field distance is calculated as $r = \frac{2 \times (10.2)^2}{2.22} = 1.99 \approx 2\text{cm}$. Marked A4 paper was placed under the antennas to ensure far field position is maintained, and also to ensure that the antennas remain properly aligned.

The two main electronics component in the setup (wide band RF Amplifier and mini VNA) were powered by computer through respective USB cable connected to serial ports of PC, the scanning operation and data recording were completely handle by the laptop.

2.2 Sample Acquisition and Preparation

Samples of potato provided for this experiment were sought for from potato market, some were bought from fresh potato market; while some were bought from store market with believes that some of them have stayed long in the store to have internal damages. All these samples were cleaned from dust and clay by tap water then they were dried by air; and for experimental purposes in order to match with our antenna and setup size, moderate sizes of these potatoes were selected.

There are two sets of samples prepared for this experimental measurement; the first set is the sample with artificial black cavity, this cavity was created in a sample of potato by making a groove in form of cone shape in such a way that the cone shape that was removes can be fixed

back into its place neatly, from this groove a hole is created inside the potato, this hole is filled up with dry matter of rotten potato tissue as shown in figure 2.

Second set of sample were prepared by getting some numbers of potato from store that were assumed to comprises of good and bad potatoes; label them as sample 1, 2, ...12 appropriately. But one fresh and very good sample was intentionally selected and label as sample C to serve as a control sample in which other samples will be making reference to as shown in figure 3.



Figure 2. Creating artificial potato black heart



Figure 3. Labeled samples

2.3 Measurement Procedure

The system operational software was pre-set and calibrated to its standard and specification before taken the first measurement with empty in-between the antennas; the system was again fine tune to be double sure that the antennas are in alignment and also they are in far field before recorded the reading as a baseline. Then, for each set of sample scanning; the sample was placed at mid-point between the two antennas far field region, with the VNA fully set for operation in a transmission mode, the system was given commands to scan the sample over the set frequency range of 1 – 3 GHz, and the resulting transmission coefficient spectrum (s_{21}) was recorded using the mini VNA software (vnaj 3.4.6) already install in PC.

From the first set of samples prepared; a measurements were taken when the sample is intact, when hole is created in it through the cone cut-out and when the hole is filled up with dry black matter of dead potato tissues that was used as artificial black heart; and recorded s_{21} spectrum for each case of measurement.

Again from second batch of prepared samples; the sample earmarks as control sample was scanned first; before all the other selected samples were scanned one after the other, the s_{21} spectrum of the control sample was recorded as a baseline spectral curve to be used as a reference curve to compare with other samples s_{21} spectral curves. Raw data of the spectrum display were collected and plot in excel Microsoft for easy comparison. Activities of the measurement were shown in figure 4. After measurement, the samples in second batch were sliced to open them and physically see the state of their internal structure.



Figure 4. Scanning of the potato samples

3.0 EXPERIMENTAL RESULTS AND DISCUSSION

3.1 Results for Artificial Black Heart Scanning

The S_{21} spectrum that was obtained when the signal was transmitted through an empty space between the antennas, through fresh intact potato, when the hole was created in it and when the hole was filled with artificial black heart are shown in figure 5. It was observed that at 2.45GHz; the peak value of S_{21} in empty space is 19.5dB which is expected because the maximum power is being transferred, the value of potato with hole is 16dB, the value for intact potato is 10dB; while 5dB corresponds to potato with hole filled with artificial black heart.

From the graph; it is observed that there is a substantial difference among these curves around our working frequency (2.45GHz). This difference in the spectrum indicates that (by theory) there is a difference in the dielectric value in the tissue of the same material subjected to the same electromagnetic radiation under the same condition; and this difference in the dielectric value

means there is a morphological changes inside the tissue which can mostly be termed as tissue defect or black heart of potato in our case. These differences are good enough to proof that microwave imaging can be used to detect internal defects in potato non-destructively.

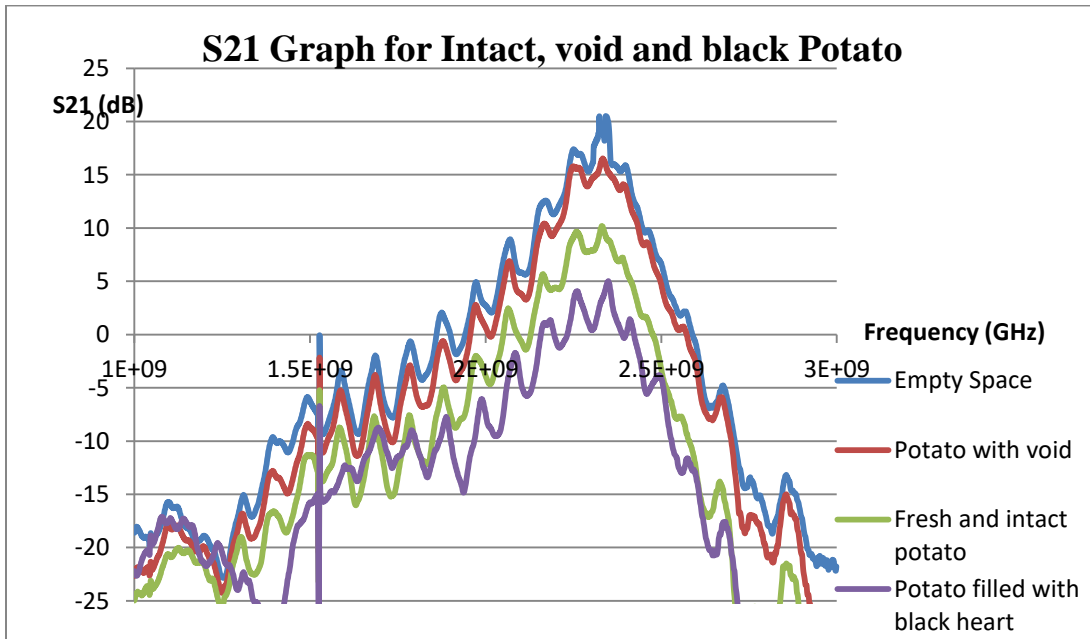


Figure 5. S_{21} graph for scanned void, intact and artificial black heart potato

3.2 Results for Random Scanning

The S_{21} graph obtained for a series of potato samples scanned at random is shown in figure 6, it can be seen from the graph that some of the graph are closely follows the same pattern; while some shows little difference and some large difference.

Most of the spectrum that follows almost the same pattern indicates that there is little or insignificant variation in the dielectric value of those samples, while those that has a substantial difference shows that there is a noticeable variation in the dielectric values, when all the samples were slice open as shown in figure 7 to physically inspect the state of their internal conditions,

the reason for such deviation was confirmed; the internal tissue of those samples with such differences were defected which can be physically seen, and it is the cause for the changes in dielectric value that affects the propagation of wave through it.

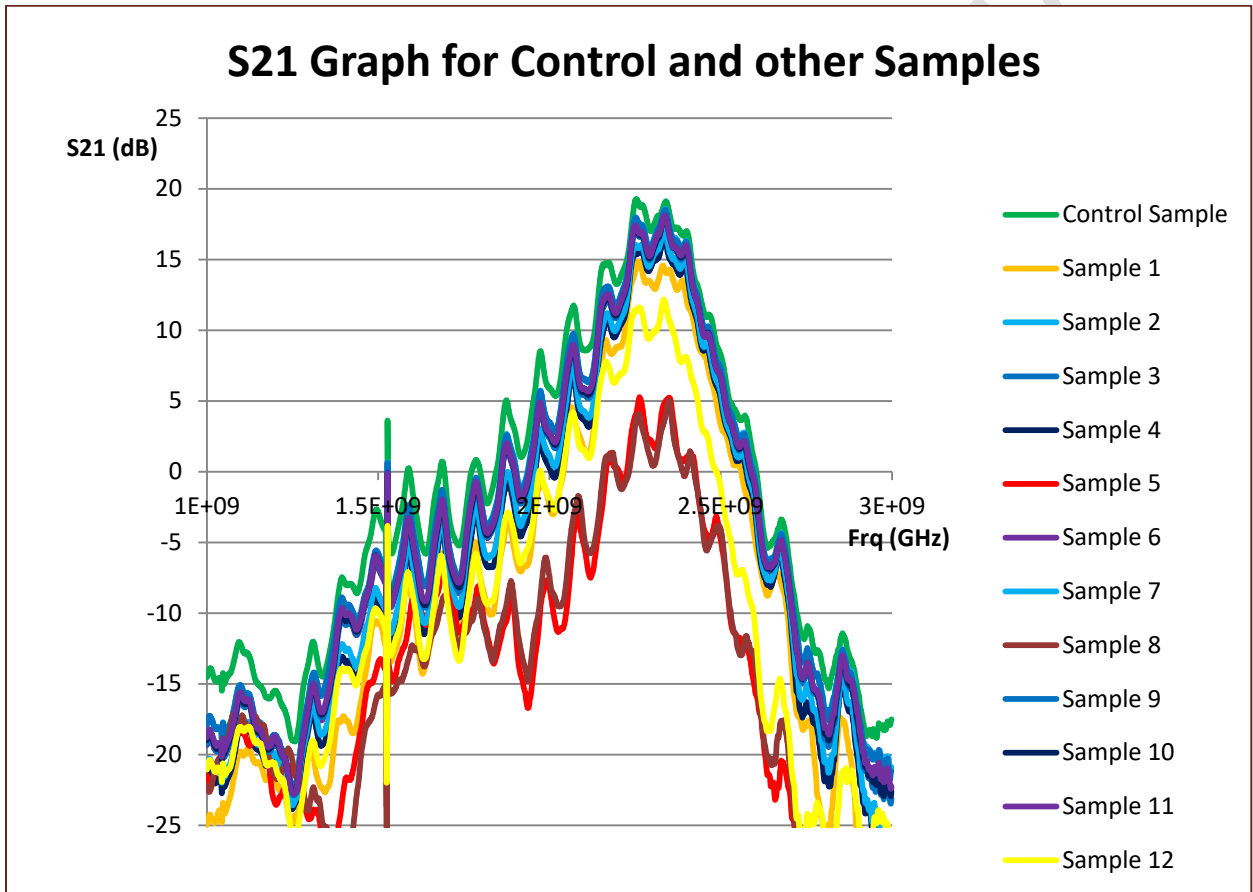


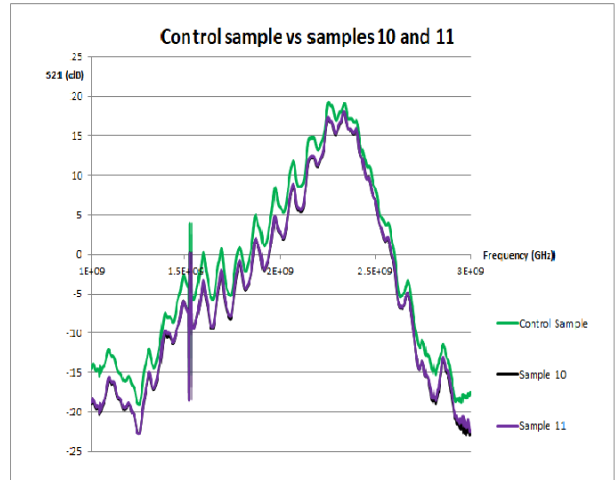
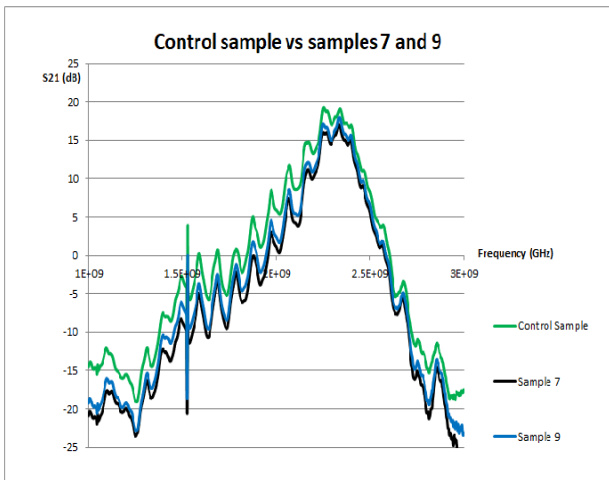
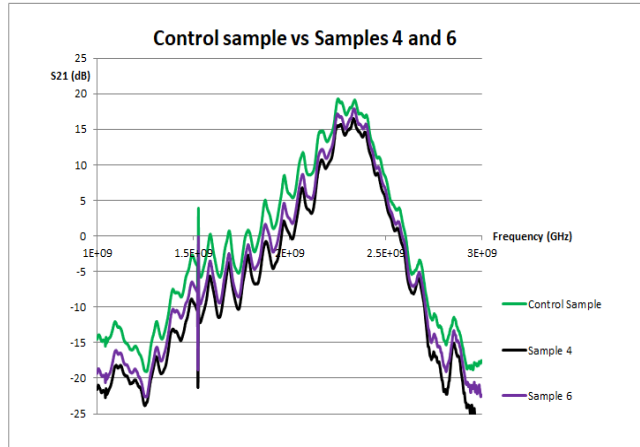
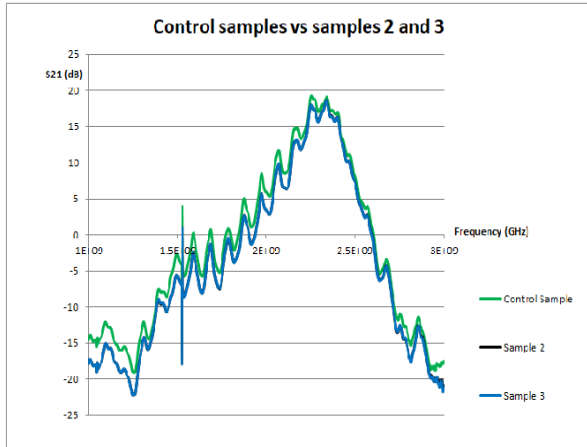
Figure 6. S_{21} graph of random scanning of potato samples



Figure 7. Physical inspection of potato inside

The figure 8 below shows S_{21} graphs of control sample and other samples when comparing them to see how much different each is from the reference point. It is seen that samples 2, 3, 4, 6, 7, 9, 10 and 11 show no much difference in the spectrum pattern from control sample which indicate that theoretically they have the same dielectric value, and also physical examination of internal structure from figure 7 confirm that those samples are good. Again, looking at the graph of control sample and samples 1 and 12, it can be seen that the peak difference at 2.45GHz is 4dB and 6dB respectively which indicate that theoretically there is a difference in dielectric value of those samples that causes the difference, a close look at the picture from figure 7 shows that sample 1 has started changing its natural color from edge towards the center while rotten have set in from edge of sample 12, from the graph; the value of the differences indicates the level of the internal damage, it can be confirmed that from picture and graph; samples 1 and 12 classified as in between good or bad depending on the set standard from grading. In the same line, when looks at the graph of control sample and samples 5 and 8, the wide difference can be clearly seen because of the differences in dielectric values of those samples, definitely wave

propagation through them will not be the same; S_{21} value is high when D.P is high and vice versa. Physically inspection from picture in figure 7 shows that the internal tissue those two samples have gone bad, from the scanned graph; samples 5 and 8 are classified as bad.



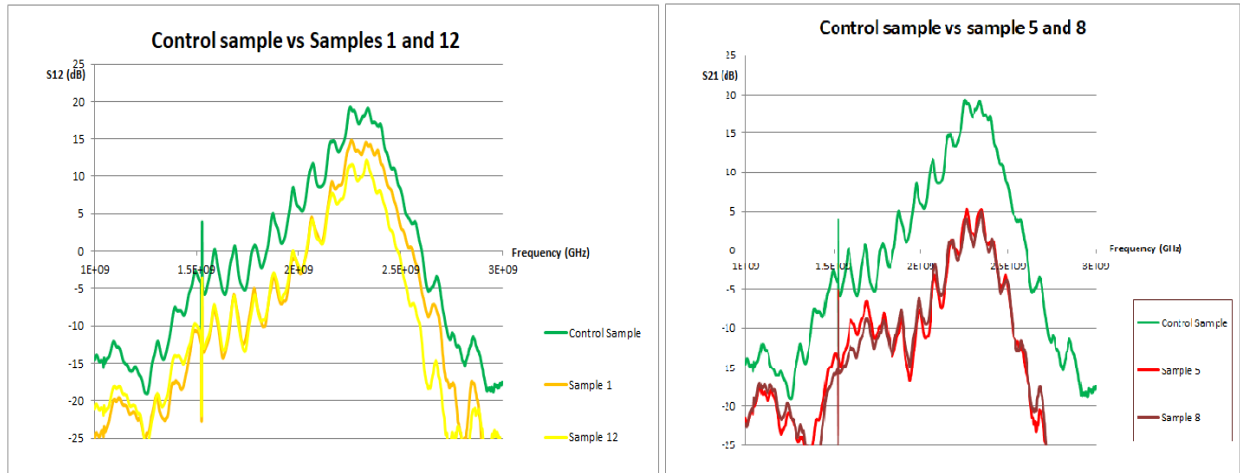


Figure 8. S_{21} graphs of control sample vs other samples

Our result is perfectly in agreement with the result got in [13] which is when the reading were taken from two opposite antenna; that there is a substantial reduction in the transmitted S_{21} value when there is a void/black heart in potato as compared to when there is none.

4.0 CONCLUSION.

The work clearly shown that; the transmission of electromagnetic waves through an object is affected by the difference in dielectric properties (presence/absence or high/low of a dielectric value) of the object. Also it has been demonstrated that the differences in the dielectric properties inside the object under test can be detected from outside the object via the transmitted S_{21} parameters, and by examining the transmitted waveform spectrum; the level of differences in the dielectric could be determined. This finding is a pathfinder to develop an instrument capable of detecting in large-scale black cavity in potato and other tubers that is simple in construction, low in cost with less complexity; it requires only a simple comparison routine rather than a complete tomographic reconstruction.

RECOMMENDATION

Though this work confirm the establish theory of using microwave scanning for NDT in agricultural produce, there are areas for further investigation and improvements which includes; Other than establishing the concept of this theory, designing of a more stable system that incorporates a generic algorithm and/or machine language to classify and identify the desire flaws in the object under test is essential and the consistency of the experiment should be validated on different variety of potato.

REFERENCES

- [1] International Atomic Energy Agency (IAEA) (2020): “An introduction to practical industrial tomography techniques for non-destructive testing (NDT)” 2020 IAEA TECDOC series, ISSN 1011–4289; no. 1931, pg 1
- [2] Subramanian S., Han L, Dutilleul P. and Smith DL. (2015) Computed tomography scanning can monitor the effects of soil medium on root system development: an example of salt stress in corn. *Front. Plant Sci.* 6:256. [doi: 10.3389/fpls.2015.00256](https://doi.org/10.3389/fpls.2015.00256)
- [3] KOIZUMI M., NAITO S., ISHIDA N., HAISHI T., & KANO H. (2008). *A Dedicated MRI for Food Science and Agriculture. Food Science and Technology Research*, 14(1), 74–82. doi:10.3136/fstr.14.74
- [4] Pacifico D., Casciani L., Ritota M., Mandolino G., Onofri C., Moschella A., and Valentini M., (2013). *NMR-Based Metabolomics for Organic Farming Traceability of Early Potatoes. Journal of Agricultural and Food Chemistry*, 61(46), 11201–11211. doi:10.1021/jf402961m

- [5] Kawachi N., Kikuchi K., Suzui N., Ishii S., Fujimaki S., Ishioka N.S., & Watabe H., (2011). *Imaging of Carbon Translocation to Fruit Using Carbon-11-Labeled Carbon Dioxide and Positron Emission Tomography*. *IEEE Transactions on Nuclear Science*, 58(2), 395–399. doi:10.1109/tns.2011.2113192
- [6] Jivanuwong S.. (1998): “Nondestructive detection of hollow heart in potatoes using ultrasonic”, MSc Thesis, Virginia Polytechnic Institute and State University, Virginia.
- 7 Ghavami N., Sotiriou I. and Kosmas P., "Experimental Investigation of Microwave Imaging as Means to Assess Fruit Quality," *2019 13th European Conference on Antennas and Propagation (EuCAP)*, 2019, pp. 1-5.
- [8] Belhadj-Tahar, N.-E., Fourrier-Lamer, A., & de Chanterac, H. (1990). Broad-band simultaneous measurement of complex permittivity and permeability using a coaxial discontinuity. *IEEE Transactions on Microwave Theory and Techniques*, 38(1), 1–7. doi:10.1109/22.44149
- [9] Jofre L., Hawley M.S., Broquetas A., De los Reyes E., Ferrando M., & A.R Elias-Fuste A.R. (1990): “*Medical imaging with a microwave tomographic scanner*”. *IEEE Transactions on Biomedical Engineering*, 37(3), 303–312. doi:10.1109/10.52331
- [10] Zhi, WJ., Wang, LF. & Hu, XJ. Recent advances in the effects of microwave radiation on brains. *Military Med Res* 4, 29 (2017). <https://doi.org/10.1186/s40779-017-0139-0>
- [11] Fallahpour Mojtaba. (2013): "Synthetic aperture radar-based techniques and reconfigurable antenna design for microwave imaging of layered structures". Doctoral Dissertations. 1847. https://scholarsmine.mst.edu/doctoral_dissertations/1847

[12] Alva A., Fan M., Qing C., Rosen C., & Ren H. (2011): “*Improving Nutrient-Use Efficiency in Chinese Potato Production: Experiences from the United States*”. *Journal of Crop Improvement*, 25(1), 46–85. doi:10.1080/15427528.2011.538465

[13] Mohamed Imram. Richard Dudley, Andrew Gregory, Ralf Mouthaan, Zhengrong Tian, Paul Andrews and Andrew Mellonie. (2016): “Non-destructive testing for black heart cavities in potatoes with microwave radiation,” Proceedings of the 46th European Microwave Conference (EuMC), London, pp. 815-818.

[14] Nachiket Kotwaliwale, Karan Singh, Abhimannu Kalne, Shyam Narayan Jha, Neeraj Seth, Abhijit Kar. (2014): “X-ray imaging methods for internal quality evaluation of agricultural produce”, *Journal of Food Science and Technology*, vol. 51, no. 1, pp. 1–15, Jan.

<http://link.springer.com/article/10.1007/s13197-011-0485-y>

[15] Galili N., Mizrach A., and Rosenhouse G., (1993): “Ultrasonic testing of whole fruit for nondestructive quality evaluation”, in *American Society of Agricultural Engineers*, vol. 936026, Spokane, Washington.

[16] Angel Dacal-Nieto Angel Dacal-Nieto, Arno Formella, Pilar Carri´on, Esteban Vazquez-Fernandez, and Manuel Fern´andez-Delgado. (2011): “Non-destructive Detection of Hollow Heart in Potatoes Using Hyperspectral Imaging” CAIP 2011, Part II, LNCS 6855, pp. 180–187, 2011.

[17] Evans S.D, and Muir A.Y. (1999): Reflectance spectrophotometry of bruising in potatoes. I. Ultraviolet to near infrared. *International Agrophysics*, 13(2): 203–209.

18 kraszevvski, A. W., & Nelson, S. O. (2003). *Microwave Techniques in Agriculture. Journal of Microwave Power and Electromagnetic Energy*, 38(1), 13–35.

doi:10.1080/08327823.2003.1168

- [19] Hagness S.C, Taflove A. and Bridges J.E (1998): "Two-dimensional FDTD analysis of a pulsed microwave confocal system for breast cancer detection: Fixed-focus and antenna-array sensors", IEEE Trans. Biomed. Eng., vol. 45, pp.1470 -1479
- [20] Schulz S., Pusch S., Pohl E., Dielkus S., Herbst-Irmer R.. (2014): "Investigation of tumor using an antenna scanning system". IEEE Microwave Symposium. 2014; 171:1401-1406
- [21] Lazebnik M., Okoniewski M., Booske JH. and Hagness SC. (2007): "Highly accurate Debye models for normal and malignant breast tissue dielectric properties at microwave frequencies". IEEE Microwave and Wireless Components Letters. ;17(12):822-824
- [22] Said T., Varadan V.V. (2009): "Variation of Cole-Cole model parameters with the complex permittivity of biological tissues". MTT'09. IEEE MTT-S International Microwave Symposium Digest; IEEE; pp. 1445-144821
- [23] Ali Esehaghbeygi, Nikan Raghmi and Abbas Kargar. (2010): "Detection of Internal Defects in Potato Based on Ultrasound Attenuation" Am. J. Pot Res (2011) 88:160–166 DOI 10.1007/s12230-010-9177-9
- [24] Zhu Zhou. (2015): "Nondestructive Detection of Blackheart in Potato by Visible/Near Infrared Transmittance Spectroscopy" Hindawi Publishing Corporation Journal of Spectroscopy Volume 2015, Article ID 786709, 9 pages <http://dx.doi.org/10.1155/2015/786709>
- [25] Islam, Mohammad Tariqul, Md Zulfiker Mahmud, Norbahiah Misran, Jun-Ichi Takada, and Mengu Cho. (2017): "Microwave Breast Phantom Measurement System with Compact Side

Slotted Directional Antenna." IEEE Access 5 (2017): pp. 5321-5330. DOI
10.1109/ACCESS.2017.2690671

[26] Dotto K. (2005): "Development of a novel ultra-wideband antenna and prototype scanner for detection and location of voids in wood". PhD thesis, The University of British Columbia

UNDER PEER REVIEW