

Climate driven responses in Cocoa for Tamil Nadu

ABSTRACT

Cocoa (*Theobroma cacao L.*) has been found to be a suitable and extremely profitable mixed crop in tropics. Cocoa can be grown on a wide variety of soils and requires well defined dry and wet seasons. Climate influences the spread of the cocoa crop by imposing environmental restrictions. The present investigation was carried to understand the effect of climate change on cocoa in various cocoa growing regions. In order to establish relationship between weather parameters and cocoa productivity, Coimbatore, Theni, Tenkasi were chosen as the study regions. Historical climate data was acquired from Indian Meteorological Department (IMD) for the past 30 years (1991-2020). Cocoa yield was simulated by using the Agricultural Policy/Environmental eXtender (APEX) and it was correlated with the weather variables such as rainfall, maximum temperature, minimum temperature, atmospheric water demand (PET), crop water requirement (ET). Cocoa crop had positive correlation with rainfall and ET. Whereas, both maximum and minimum temperature had significantly negative effect. Climatic conditions, such as decrease in rainfall, increase in temperature and increase in PET, would significantly reduce the bean yield. The anticipated increase in temperature and erratic rainfall distribution requires suitable management measures for sustainable cocoa productivity.

Keywords: Cocoa, Tamil Nadu, Correlation analysis, Temperature, Rainfall

1. INTRODUCTION

Cocoa Industry in India has expanded to a considerable extent in the current decade. A trend of increasing consumption of chocolates and other cocoa-based products has emerged while the production of cocoa beans hardly meets 30% of the demand projected by the processing industry in India. Since the early 1970s, cocoa cultivation has gained a prominence and emerged as a commercial crop in India [1]. In Tamil Nadu, cocoa growing regions are spread over all the Agro climatic zones. However, mainly it is concentrated over the western ghat regions and in high altitude areas.

Climate change will have a significant impact on the distribution of crops like cocoa [2,3]. Cocoa can be grown on a wide variety of soils, rich in organic matter and nitrogen, well

drained and acidic to neutral in reaction. The vegetative and reproductive growth of cocoa is influenced by a complexity of environmental factors, particularly rainfall and temperature. Cocoa plant needs equitable climate with well-distributed annual rainfall of 1500 to 2000 mm under rainfed environment [4]. It requires fairly well defined dry and wet seasons for better growth, cycle of flushing, flowering, fruiting and productivity [5,6,7]. Optimum mean monthly temperature range for cocoa varies from 21.1 °C to 32.2 °C. When the temperature falls below 15 °C, its productivity starts declining. If the temperature falls to 10 °C for several consecutive days, then yields would reduce by 50% [8]. Better growth of cocoa is achieved when the humidity is above 85% [9]. Nair et al. reported the requirement of shading in the early years and possibility of cultivating cocoa without shade in Kerala conditions for higher productivity [10]. The trend of rapidly deteriorating climate has halted cocoa productivity in some countries during the last decade [11,12]. There is concern that anticipated rise in global temperature may also rise the potential evapotranspiration that consequently perturb the suitability of climatic condition for cocoa [13].

Crop weather models are used as an effective tool to understand the relationship between weather, soil, management practices and crop growth/productivity. A single growth model, Agricultural Policy/Environmental eXtender (APEX) can be used for the simulation of crops, trees, and other plants [14]. APEX is capable of simulating growth for both annual and perennial crops. Phenological development of the crop is based on daily heat unit accumulation. The model is capable of simulating mixed stands of up to ten crops or other plants in a competitive environment [15]. In the current study, the APEX model was employed to understand the effect of climate change on cocoa in various cocoa growing regions.

2. MATERIALS AND METHODS

2.1. Description of the study region

Tamil Nadu has major cocoa cultivation spread over western ghats with high potential for intercropping with coconut. Though coconut is the predominant crop, cocoa as intercrop is grown in limited pockets. APEX model was set up in the representative sites of three major regions of Tamil Nadu, where cocoa crop is picking up as an intercrop in the coconut gardens viz., Coimbatore, Theni and Tenkasi. Coimbatore fall in the Western Agro climatic zone and Tenkasi and Theni falls in the Southern Agro Climatic zone (Fig.1).

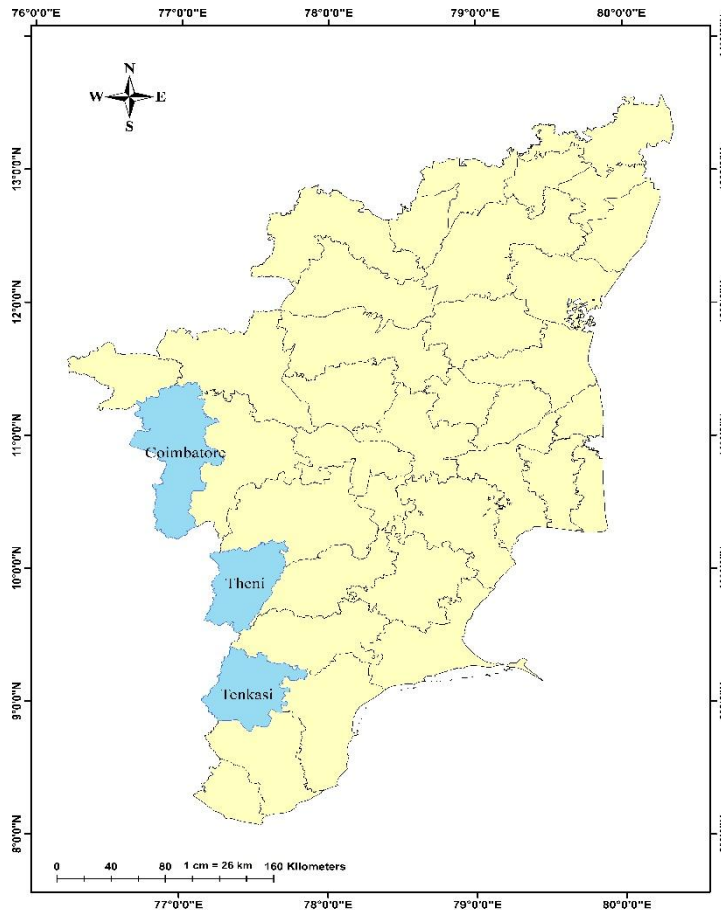


Fig. 1 Study regions

2.2. Weather data

The historical weather data was collected from the Indian Meteorological Department (IMD). Daily gridded rainfall data with 0.25x0.25 resolution was extracted for the last 30 years period from 1991 to 2020. The daily maximum and minimum temperature data was taken from 1991 to 2020 with a resolution of 0.5x0.5 degree [16,17]. The Climate normal of the study regions were computed using 30 years rainfall and temperature data.

2.3 APEX model parameters

In APEX model, model parameters values have been developed for most of the crops. These values were adopted and the coefficients were changed to suit the phenology and productivity of Cocoa based on the information from survey and discussions made with the leading cocoa growers. Crop performance results are derived from the model. Cocoa yield simulated by the APEX was correlated with the weather variables such as rainfall, maximum temperature, minimum temperature, atmospheric water demand (PET), crop water requirement (ET) estimated for 30 years period to understand the relationship between cocoa productivity and the weather parameters in Tamil Nadu.

3. RESULTS AND DISCUSSION

3.1. Climatic condition of the study area

3.1.1. Rainfall

Uni-model rainfall with peak rainy season in Northeast monsoon is observed for all the study regions. However, rainfall from Southwest monsoon season during the month of September is also predominant in all the study locations. Theni region receives highest rainfall among the study locations, followed by Tenkasi region.

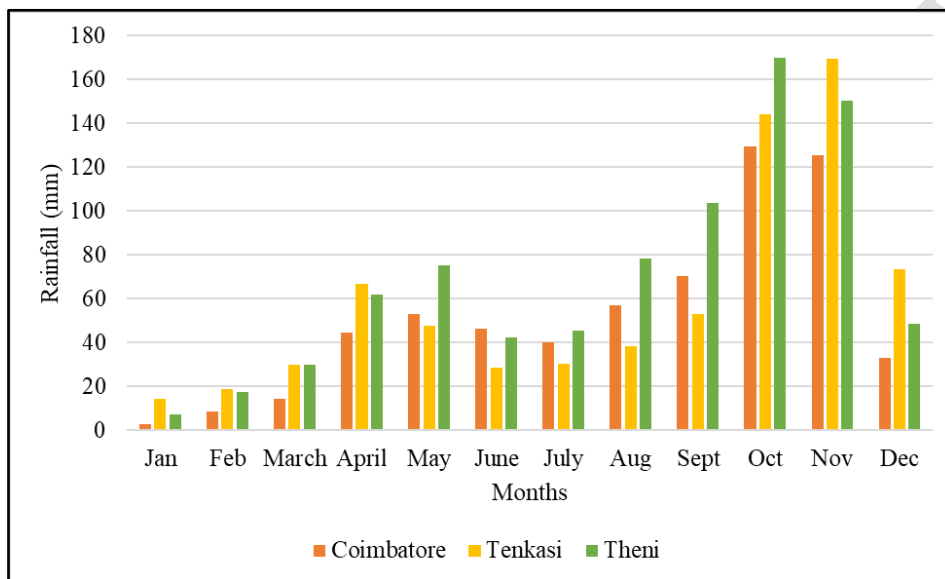


Fig. 2 Mean monthly rainfall (mm) distribution in the study region

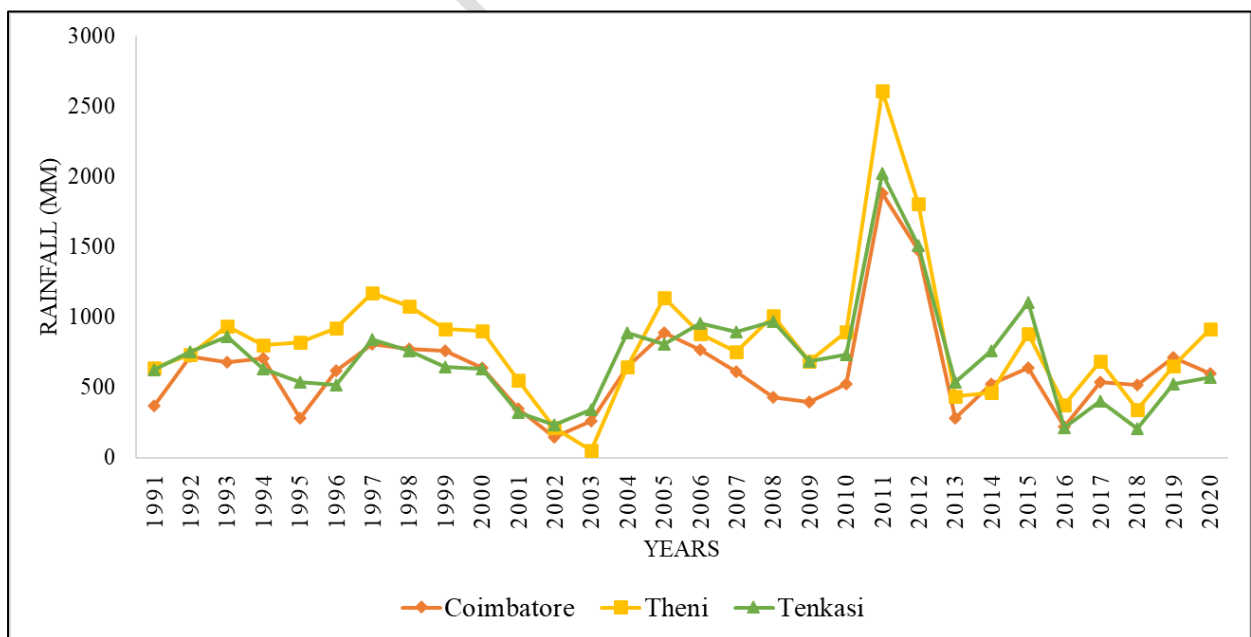


Fig. 3 Annual average rainfall (mm) of regions (1991 – 2020)

Lowest rainfall could be noticed in Coimbatore region indicating the requirement of supplemental irrigation from December to July due avoid water stress during flowering phase of cocoa. Mean monthly rainfall distribution of the study region is presented in figure 2. The mean rainfall (1991-2020) recorded was 716 mm, 625 mm and 830.5 mm for Tenkasi, Coimbatore and Theni, respectively. In Tenkasi, the highest rainfall (2022.5 mm) was recorded during 2011, while the lowest rainfall (209.1 mm) was recorded during the year 2018. The Highest and lowest rainfall recorded for Coimbatore region was 1884.8 (2011) and 145.7 mm (2002), respectively. The highest rainfall (2610.6 mm) for Theni region was recorded during 2011 and the lowest rainfall (51.7 mm) was recorded during 2003. Inter-annual variability in rainfall is also high in the study regions and no trend could be observed in any of the study regions.

3.1.2. Temperature

Maximum temperature in all the study regions increases continuously from January to April months. With the receipt of summer rainfall, the temperatures begin to fall from May through July. The temperatures start to soar up during the month of August and continue to increase up to September before the commencement of North East Monsoon. Highest maximum temperature of 34.9 °C is observed in April over Tenkasi, while Theni records around 33 °C during March to April. Minimum temperatures are comparatively low in Coimbatore region indicating more diurnal variability. Lowest minimum temperature is observed in Coimbatore region during January and February months. Maximum and Minimum Temperatures recorded during different months of a year in the study region is presented in figure 4 and 5.

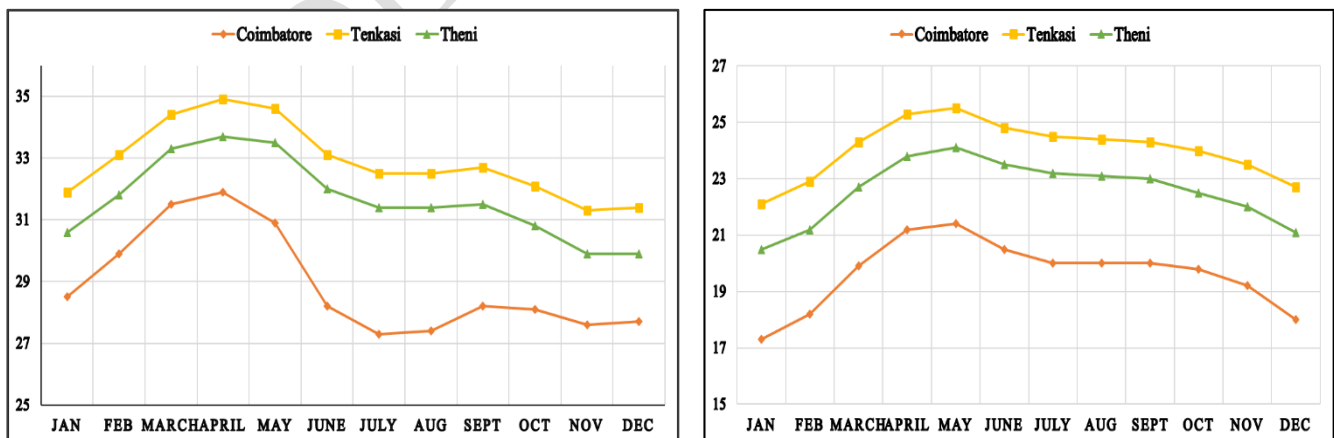


Fig. 4 and 5 Mean Maximum and Minimum Temperatures (°C) in the study region.

Warming trend is noticed both in maximum and minimum temperatures for all the study regions. Both maximum and minimum temperatures were higher at Tenkasi compared to all other study regions.

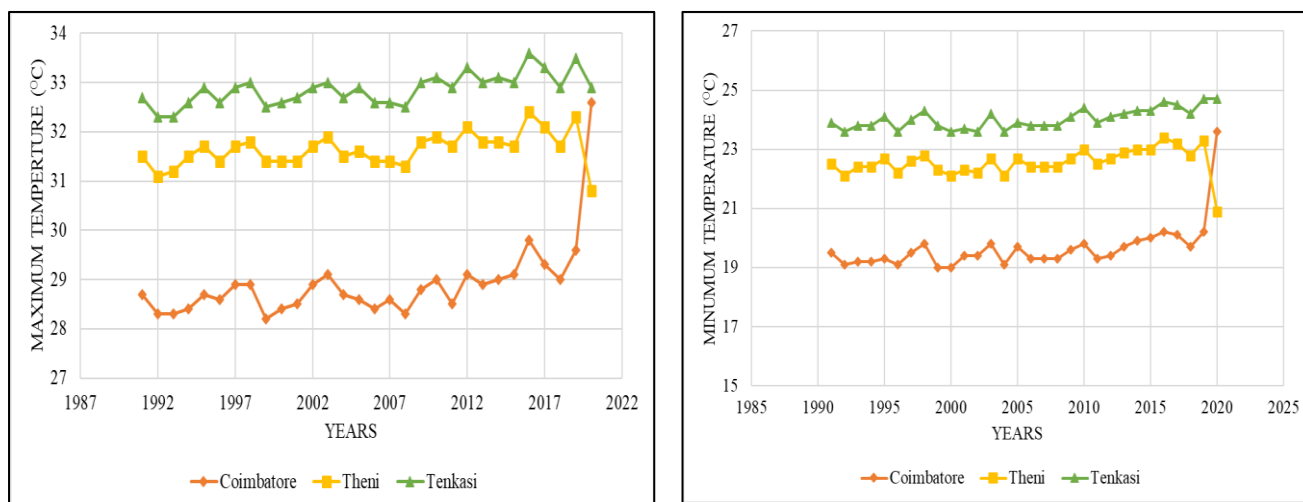


Fig. 6 and 7 Annual Average Temperatures (°C) of study regions (1979 – 2010).

The mean maximum and minimum temperatures for Tenkasi are 32.9 °C and 24.03 °C. The highest mean maximum temperature (33.6 °C) was recorded during 2016 and the highest mean minimum temperature (24.7 °C) was recorded during 2019. The annual mean maximum and minimum temperature for Coimbatore region is 28.9 °C and 19.65 °C, respectively. The highest mean maximum temperature (32.6 °C) and the highest mean minimum temperature (23.6 °C) was observed during 2020. The annual mean maximum and minimum temperature for Theni region is 31.6 °C and 22.6 °C, respectively. The highest mean maximum temperature (32.4 °C) and the highest mean minimum temperature (23.4 °C) was noted during 2016. It is also conspicuously seen that all the highest mean temperatures are recorded in the recent years.

3.2. Correlation between weather variables and cocoa productivity

Influence of rainfall, temperature, water stress and temperature stress on cocoa productivity was assessed through APEX model simulations and correlation analysis and the results are presented in Table 1. For correlation analysis past 30 years yield and weather data were considered for establishing the statistically significant relationship between the cocoa productivity and weather parameters.

Table 1 Correlation between weather variables and cocoa growth and productivity

	Annual Rainfall (mm)	Mean Max. temp. (°C)	Mean Min temp. (°C)	Annual PET (mm)	Annual ET (mm)	Water Stress days	Temperature Stress days
Coimbatore							
Cocoa Dry bean yield	.514*	-.673**	-.470*	-.506*	.560*	-.573**	-.410
Cocoa Biomass	.809**	-.807**	-.592**	-.778**	.875**	-.712**	-.636**
Tenkasi							
Cocoa Dry bean yield	.163	-.613**	-.217	-.566**	.479*	-.523*	-.082
Cocoa Biomass	.188	-.681**	-.411	-.628**	.701**	-.765**	-.464*
Theni							
Cocoa Dry bean yield	.222	-.283	-.137	-.167	.194	-.142	-.353
Cocoa Biomass	.326	-.407	-.238	-.367	.636**	-.652**	-.080

*. Correlation is significant at the 0.05 level (2-tailed),

** . Correlation is significant at the 0.01 level (2-tailed).

It could be seen that the annual rainfall had significant positive correlation on biomass and yield of cocoa, identical to the results of Asamoah [18]. Both maximum and minimum temperatures are negatively correlated with biomass and yield. The negative correlation is stronger for maximum temperature compared to minimum temperature indicating that any increase in temperature in future would have negative impact on the yield of cocoa production in all the study regions, which is equivalent to the correlation studies in tea [19].

Similarly, PET has a negative correlation with cocoa production. When PET is more, the atmospheric water demand is also more. Under this condition, the plant would get stressed to take more water from the soil. In contrast, ET indicates the plant water usage, which had positive relationship with cocoa productivity. Water stress days and temperature

stress days had negative correlation with all the parameters including cocoa bean yield indicating that any extreme event would affect the yield of cocoa.

4. CONCLUSION

Cocoa crop was highly influenced by the rainfall in the moderate rainfall regions (Coimbatore) compared to the regions (Theni and Tenkasi) that receive adequate rainfall. Rainfall had the positive influence on cocoa. Both maximum and minimum temperature showed significantly negative effect whereas the detrimental effect of maximum temperature was observed to be more over the minimum temperature. The atmospheric water demand indicator PET negatively correlated with the cocoa yield. ET had the positive impact on cocoa. Climatic conditions, such as decrease in rainfall, increase in temperature and increase in PET, would significantly reduce the bean yield. Results of correlation analysis clearly indicate the warming environment with dry climatic conditions affects the cocoa productivity considerably and adaptation measures need to be taken to cope with the anticipated increase in temperature and erratic rainfall distribution in Tamil Nadu.

5. REFERENCES

- [1]. Bhalerao PP, Maheswarappa HP, Sumitha S, Apshara SE. Performance of cocoa clones as intercrop in coconut gardens under south Gujarat condition. *International Journal of Innovative Horticulture*. 2018;7(2):120-2.
- [2]. Pearson RG, Dawson TP. Predicting the impacts of climate change on the distribution of species: are bioclimate envelope models useful? *Global ecology and biogeography*. 2003 Sep;12(5):361-71.
- [3]. Paterson RR, Kumar L, Taylor S, Lima N. Future climate effects on suitability for growth of oil palms in Malaysia and Indonesia. *Scientific reports*. 2015 Sep 24;5(1):1-1.
- [4]. FAO. ECOCROP. Food and Agriculture Organization of the United Nations, Rome. 2007. <http://ecocrop.fao.org>.
- [5]. Laderach P, Martinez-Valle A, Schroth G, Castro N. Predicting the future climatic suitability for cocoa farming of the world's leading producer countries, Ghana and Côte d'Ivoire. *Climatic change*. 2013 Aug;119(3):841-54.
- [6]. Ochse JJ, Soule MJ, Dijkman Man MJ, Wehlburg C. Tropical and subtropical agriculture. Vols I and II. The Macmillan Company New York. 1961:1-446.
- [7]. Salef PJ. Growth, flowering and fruiting of cacao under controlled soil moisture conditions. *Journal of Horticultural Science*. 1970 Jan 1;45(2):99-118.

- [8]. Ernehholm, I. Cocoa production of South America. Historical development and present geographical distribution. Holmqvits Boktryckeri, Gothemburg, Sweden. 1948.
- [9]. Asopa VN, Narayanan S. Cocoa production and Marketing in India. Oxford and IBH publishing Co. Pvt. Ltd. New Delhi. 1990: 312.
- [10]. Nair RV, Mallika VK, Swapna M. Response of cocoa to shade. *J. Plant. Crops.* 1996: 24:99-101.
- [11]. Niang I, Ruppel OC, Abdrabo MA., Essel A, Lennard C, Padgham J, Urquhart P. Africa. In: VReal, Barros (Ed.), *Climate Change 2014: Impacts, Adaptation, and Vulnerability. Part B: Regional Aspects. Contribution of Working Group II to the Fifth Assessment Report of the Intergovernmental Panel on Climate Change.* Cambridge University Press, Cambridge. 2014. pp. 1199–1265.
- [12]. Ruf F, Schroth G, Doffangui K. Climate change, cocoa migrations and deforestation in West Africa: What does the past tell us about the future? *Sustainability Science.* 2015 Jan;10(1):101-11.
- [13]. Schroth G, Laderach P, Martinez-Valle AI, Bunn C, Jassogne L. Vulnerability to climate change of cocoa in West Africa: Patterns, opportunities and limits to adaptation. *Science of the Total Environment.* 2016 Jun 15: 556:231-41.
- [14]. Williams JR, Jones CA, Kiniry JR, Spanel DA. The EPIC crop growth model. *Transactions of the ASAE.* 1989;32(2):497-0511.
- [15]. Kiniry JR, Williams JR, Gassman PW, Debaeke P. A general, process-oriented model for two competing plant species. *Transactions of the ASAE.* 1992: 35(3):801-10.
- [16]. Srivastava AK, Rajeevan M, Kshirsagar SR. Development of a high resolution daily gridded temperature data set (1969–2005) for the Indian region. *Atmospheric Science Letters.* 2009 Oct;10(4):249-54.
- [17]. Pai DS, Rajeevan M, Sreejith OP, Mukhopadhyay B, Satbha NS. Development of a new high spatial resolution (0.25× 0.25) long period (1901- 2010) daily gridded rainfall data set over India and its comparison with existing data sets over the region. *Mausam.* 2014 Jan 1: 65(1):1-8.
- [18]. Asamoah PKB, Obodai J, Amekudzi LK. The relationship between annual rainfall totals, rainfall onsets and cocoa yields in Ashanti Region of Ghana: a reality or farce? *J Environ Earth Sci.* 2017: 7(8):85–88
- [19]. Rahman MM, Islam MN, Hossain MR, Ali MA. Statistical association between temperature-rainfall and tea yield at Sylhet Malnicherra Tea Estate: an empirical analysis. *The Jahangirnagar Review.* 2017:1-3.