

**Wood anatomical study of *Osyris quadripartita* Salz. ex Decne (African sandalwood) from the Northern Western Ghats, India**

**Abstract**

The family Santalaceae is a medicinally important. *Osyris quadripartita* Salz. ex Decne has been used for the medicinal use such as Antihelmintic, leishmaniasis like leprosy diseases, abnormalities, kidney disease, forage, hygienic/perfuming, eye pain, cold, anaphylactic shock, epilepsy, circumcision wound, toothache, tonsillitis, abdominal pain, urine problem, Breast cancer, Mental problems and Anti-corona virus disease etc. It has also been reported for its activities such as Anti-ulcer activity, Antiviral activity. *S. album* and *O. quadripartita* belong to the same family Santalaceae and have many similarities in their morphological characteristics. Being both members belong to the same family, that's why anatomical character help to resolve this problem and easy to distinguish most wood anatomical characteristics. Therefore, distinguishing one from the other anatomically is very easy.

A study has been carried out to authenticate the identity of this specie based on anatomical characters. The anatomical sections of stem (TS, TLS and RLS) of the species were observed under the bright-field compound binocular microscope and characters were documented. The aim of study to elucidate the means and criteria to identify the anatomical structure of *O. quadripartita*. Though the diagrammatic outline of the stem sections is similar, detail anatomical characters are significantly different. The characters such as arrangement of cortical tissues, pericyclicfibres, phloem fibres and phloem rays are useful in differentiating the stem and petiole of the species. Wood anatomical characteristics of *O. quadripartita* were seriation of rays, type of crystalliferous cells and abundance of extractives. Ray cells frequently contain rhomboidal crystals. In Cortex and pith region of stem observed solitary crystals. On the basis of preliminary study the species can be differentiated from other species of same family based only on anatomical characters.

**Keywords:** *Osyris quadripartita*, Authentication, Anatomy, Vegetative parts

## Introduction:

The Santalaceae family covered basically three types of habitat like herbs, shrubs, and rare trees. The family Santalaceae is a medicinally important. The family basically widely distributed 44 genera and 930 species (Simpson, 2010). In the *Osyris* genus, Six or seven species were distributed in Asia, Africa, Europe, and China (Nianhe & Gilbert, 2003). *Osyris* genus is the evergreen root hemiparasites, ethnomedicinal shrub plants. Many tribal peoples this plant leaves uses as making of herbal tea (Herrera, 1984; Subba & Basnet, 2014; Kefalew et al., 2015; Silva et al., 2016). The taxonomical characteristic of *Osyris quadripartita* Salzmänn ex Decaisne, *Ann. Sci. Nat., Bot., sér. 2, 6: 65. 1836*. Plants 2-5 m tall. Branches slender, 3-angled when young. Leaf blade grayish green, 1.2-6 × 0.6-2 cm, leathery, sometimes rugose on both surfaces, with dense glands, base gradually narrowed or obtuse, apex acute to cuspidate or rounded. Male inflorescences 2-4(-13)-flowered; peduncle to 11 mm. Female inflorescences 1-3-flowered; bracts minute, caducous. Male flowers: pedicel 4-8 mm; perianth ca. 4 mm in diam., lobes 3, yellow or green, sometimes flushed brown, ca. 1.5 mm. Stamens 3, filaments very short, disk fleshy; sterile ovary very small, at center of disk. Female flowers usually solitary, sometimes to 4 in subumbel; pedicel to 25 mm, enlarged at apex; bracteoles 2, linear-spatulate, ca. as long as ovary, soon caducous, disk and stamens as in male but stamens sterile. Bisexual flowers similar to female but with fertile stamens; stigmas 3. Drupe orange to red when ripe, drying pale blackish, subglobose or pear-shaped, 4.5-10 mm in diam. Fl. Apr-Jun, fr. Oct. (Zhen, 2022).

The only two main species used to produce commercial sandalwood oil are *Santalum album* (Indian sandalwood) and *S. spicatum* (Australian sandalwood). In domestic as well as international market true sandalwood oil is very costly. Wrongly or intentionally some peoples sell adulterated low quality cheaper substitute, the 'African sandalwood' (*O. quadripartita*). The heartwood of this plant not as strongly fragrant as sandalwood so, this plant is used as adulterating sandalwood in the market (Khare, 2007; Shyaula, 2012). *O. lanceolata* is a timber like true sandalwood and its contains oil components. This oil is used to make a scent (Mabberley, 2018). *O. quadripartita* coming under least concern IUCN category (Wilson, 2018). In Ethiopia this plant leaves and root us as medicinal purpose to cure antihelmintic, leishmaniasis like leprosy diseases, abnormalities, kidney disease, forage, hygienic/perfuming, eye pain, cold, anaphylactic shock, epilepsy, circumcision wound, toothache, tonsillitis, abdominal pain and urine problem. The methanol solvent leaves extract of *O. quadripartite* was shows antibacterial

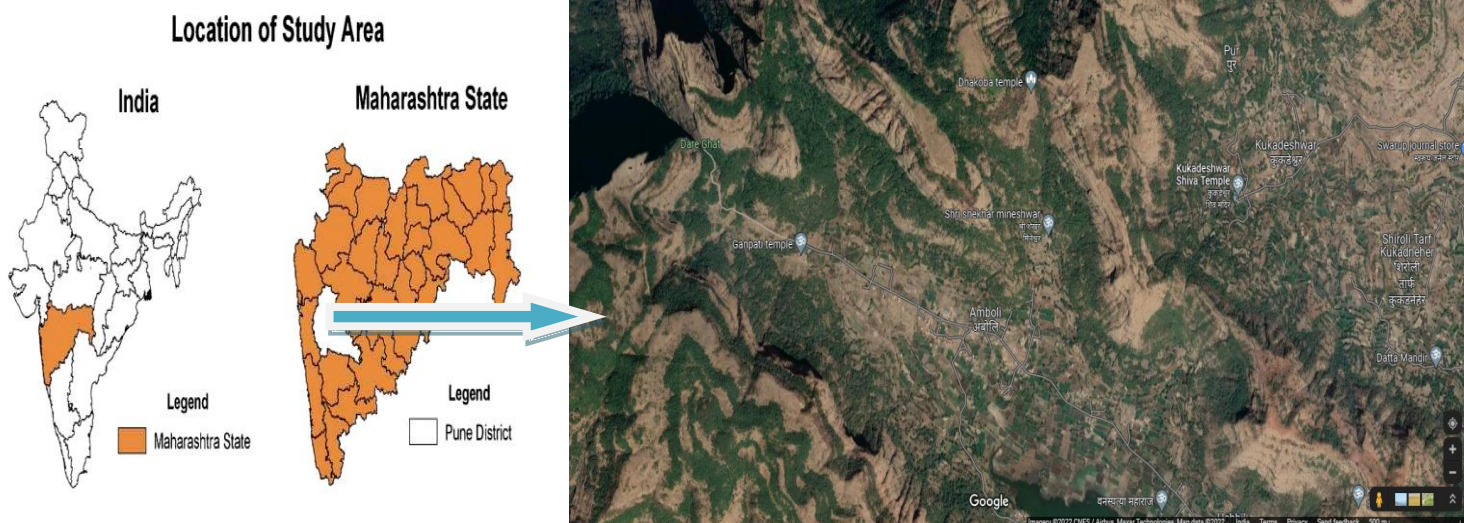
and antifungal test (Mouhajir et al., 2001; Gemedo-dalle et al., 2005; Geyid et al., 2005; Giday et al., 2007; Mesfin, 2007; Agize et al., 2013; Getaneh & Girma, 2014; Bayissa, 2015; Birhan et al., 2017; Dires, 2017; Abdela & Sultan, 2018; Worku, 2018; Yohannis et al., 2018). Decocted dried leaves are used for the treatment of breast cancer (Graham et al., 2000). Pyrrolizidine and quinolizidine alkaloid extracted and analyzed from *O. alba* (Woldemichael & Wink, 2002). Anthrax and pasturolosis disease treated with the help of *O. quadripartita* plant root (Advisor, 2017). *O. quadripartita* bark gave to orally for the treatment of jaundice (Maryo et al., 2015). *O. quadripartite* fruits are consumed as wild edible fruit in the Western Ghats, Tamil Nadu regions, and Delanta region of northern Ethiopia (Arinathan et al., 2007; Alemayehu et al., 2015; Meragiaw et al., 2015). During the study of *Osyris* species we observed many of anatomical variation TS of stem (Cork layer, Cortex cell layer, Pericyclic fiber cell number, Phloem cell layer, Phloem medullary layer, Xylem medullary layer, Xylem vessels) of the species were observed under the bright-field light compound microscope and their characters were documented (Metcalf & Chalk, 1965; Khandelwal & Sethi, 2019). This species produces an annual ring and observed a secondary growth. These plants show annual rings because of well developed secondary growth. In stem woody anatomy observed a broad range arrangement of vessels and fibers produces a porous wood (Metcalf & Chalk, 1965). Xylem is a complex tissue system composed of different cell types. The vessel elements adjoining to each other, at their ends possess perforations, whereas tracheid elements lack these perforations. Tracheid elements are elongated, lignified, thick walled and pointed at both ends. The perforations have several openings which are scalariform perforation plates (Fig.2). Xylem vessels showing simple pits in their lateral walls. To observe xylem structure, mature stems are sectioned transversely (transverse section: TS) and longitudinal planes: along the rays (radial longitudinal section: RLS and tangential longitudinal section: TLS). Rays are termed one cell wide tangentially called uniseriate and more than one cell wide called multiseriate observed in both species, viewed in TS and TLS. The vascular cambium produces secondary xylem and phloem of stem. Prismatic calcium oxalate crystals observed in *O. quadripartita* in the pith region of stem (Evert, 2006; Rudall, 2007; Khandelwal & Sethi, 2019). Starch grains are one of the non-nitrogenous stored forms observed in studied plant species. Tapioca starch grain type observed in both plant species (Stevens, 1907; Wallis, 1939). Wood anatomical characteristics of *O. quadripartita* were seriation of rays, type of crystalliferous cells and abundance of extractives. Ray cells frequently

contain rhomboidal crystals. In Cortex and pith region of stem observed solitary crystals (fig. 2 b, e).( Rao & Das, 1979; Zobel, 1985; Evert, 2006). The sclerenchyma found in the pericyclic region of stem. The stone cells are observed in both species. Stone cells important function is thickening and lignification of the walls of thin-walled parenchyma cells. Stone cell providing a strengthening and toughness of parenchyma cells.. Sclerenchyma cells are classified into two categories fibers and sclereids ( Rao, 1957; Evert, 2006).

## Materials and methods:

**Study area and collection:** Leaf and stem of *O. quadripartita* were collected from Pune, district during 2020-2021 of Maharashtra, India. The plant was identified using Flora of Maharashtra & Flora of China and authenticated by myself.

**Anatomical study of stem:** Make a thin sliced from fresh mature stem samples for anatomical study (8mm to 10mm) from plant species. Prepare hand sections stained were stain using 0.1% Safranin and mount in glycerin and examined under bright-field compound microscope (Chamberlain, 1920; Khandelwal & Sethi, 2019). Measure a morphometric observations of length, diameter, bredth and number of layers ( $\mu\text{m}$ ). surface (Salisbury's, 1927; Evert, 2006).



**Map 1: STUDY AREA FROM JUNNAR TEHASIL (Table 3)**

## Results and Discussion:

**Anatomical study of stem:** Transverse Section (T.S.) of stem of *O. quadripartita* (Figs. 2) (Table 4,5 and 6)

**Corck:** Supperficial and strongly thickened corck layer observed in the species. It was 14-16 cork layer.

**Cortex:** The cortex cells arranged in compact form. The total cortex layer is 10-18 (fig.2 a).

**Pericyclic fiber:** Pericycle is a part of ground tissue. Ground tissue are primary function is mechanical support. Pericyclic fiber are sclerenchyma in nature. Pericyclic fiber were observed in this species. It was observed in each clump number of cells are 02-06

### Vascular tissues:

**Phloem:** The phloem stratified in to soft and hard portions. In which hard portions is nothing but primary phloem fibers, or protophloem fibers and secondary phloem fibers. Phloem observed in this species 10-15 layered. Phloem medullary rays observed in this species there are 2-4 layered. Various cluster of crystalline structures deposition were present in pith cells .

**Xylem:** The arc type vascular bundles observed. Diffuse porous wood observed because of tracharory elements presents (trachides and vessels). Medullary rays broader and expanded at the distal end. Vessels are arranged in vertical rows. Vessels varying in size 144.31  $\mu\text{m}$ . Medullary rays mostly are 1-2. Well developed xylem fibers were arranged in vertical rows and in group. Fiber both end are pointed. Diffuse, aliform and confluent of parenchymatous cell observed in both species.

**Pith:** Pith are unligified, large pitted parenchymatous cell with thin walled. pith region of stem observed solitary crystals.

### Table Caption –

**Table 1:** Classification of *Osyris quadripartita*

<b>Kingdom</b>	Plantae
<b>Class</b>	Magnoliopsida
<b>Order</b>	Santalales
<b>Family</b>	Santalaceae
<b>Genus</b>	<i>Osyris</i>
<b>Species</b>	<i>O. quadripartita</i> Salzmann ex Decaisne
<b>Common names</b>	Pulluruvi, Popali, Dalmia, Paral and wild tea plant

(Singh et al., 2001)

**Table 2:** Morphology of *Osyris quadripartita*

Characteristics	
<b>Hight</b>	2-5 m tall
<b>Bark</b>	Brown in colour
<b>Leaves</b>	Simple
<b>Flower</b>	Yellow in colour
<b>Inflorescence</b>	Cymes axillary
<b>Fruit</b>	Drupe orange to red when ripe
<b>Occurrence</b>	Bhutan, Cambodia, India, Laos, Myanmar, Nepal, Sri Lanka, Thailand, Vietnam; Africa, S Europe
<b>Altitude from sea level</b>	600-2700 m

(Singh et al., 2000; Zhen, 2022).

**Table 3.** *Osyris quadripartita* studied from northern Western Ghats of Maharashtra.

Taxon	Place of Collection	Geographic coordinates	Elevation (m)
<i>Osyris quadripartita</i>	19°14'22.2"N 73°41'35.4"E	Amboli, Junnar, Maharashtra 410502	1088
	19°13'14.3"N 73°43'37.0"E	Keldare, Junnar, Maharashtra 410502	325
	19°13'56.2"N 73°42'42.7"E	Uchhil, Junnar, Maharashtra 410502	277
	19°30'42.9"N 73°41'42.8"E	Ratangad, Maharashtra 421601	1126

**Table 4.** Stem anatomical characteristics of *Osyris quadripartita*.

Characters	<i>O. quadripartita</i>
Cork layer	14- 16
Cortex layer	10 - 18
Pericyclic fiber cell number	02-06
Phloem cell layer	10-15
Phloem medullary layer	2-4
Xylem medullary layer	1 - 2
Xylem vessels	simple and perforation
Pith cell	Parenchyma cell- rosette solitary crystals present

**Table 5.** T.S stem anatomical characteristics of *Osyris quadripartita*

Characters	<i>O. quadripartita</i>
Cork layer length 10 X	53.033±9.95
Pericyclic fiber cell diameter (cell number in each pach 18-25) 10 X	35.32±14.81
Vessele diameter 40 X	114.07±22.19
Medullary rays length 40 X	51.37±16.32
Pith cell diameter 40 X	56.66±16.98

\*Each value expressed as mean± S.D of 10 replicate

**Table 6.** T.L.S stem anatomical characteristics of *Osyris quadripartita*

Characters	<i>O. quadripartita</i>
Vessele Length 10 X	144.31 ±31.36
Bredth 10 X	25.98±3.42
Medullary rays length(Medullary rays cell layer number 2-4) 10 X	406.29±99.56
Bredth 10 X	13.40±1.31

\*Each value expressed as mean± S.D of 10 replicates

## Figure Legends

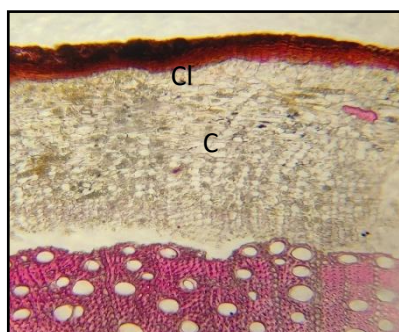
**Figure 1.** Morphological appearance *Osyris quadripartita* from Northern Western Ghats of Maharashtra.



**Figure 2. (a-i)** Stem a

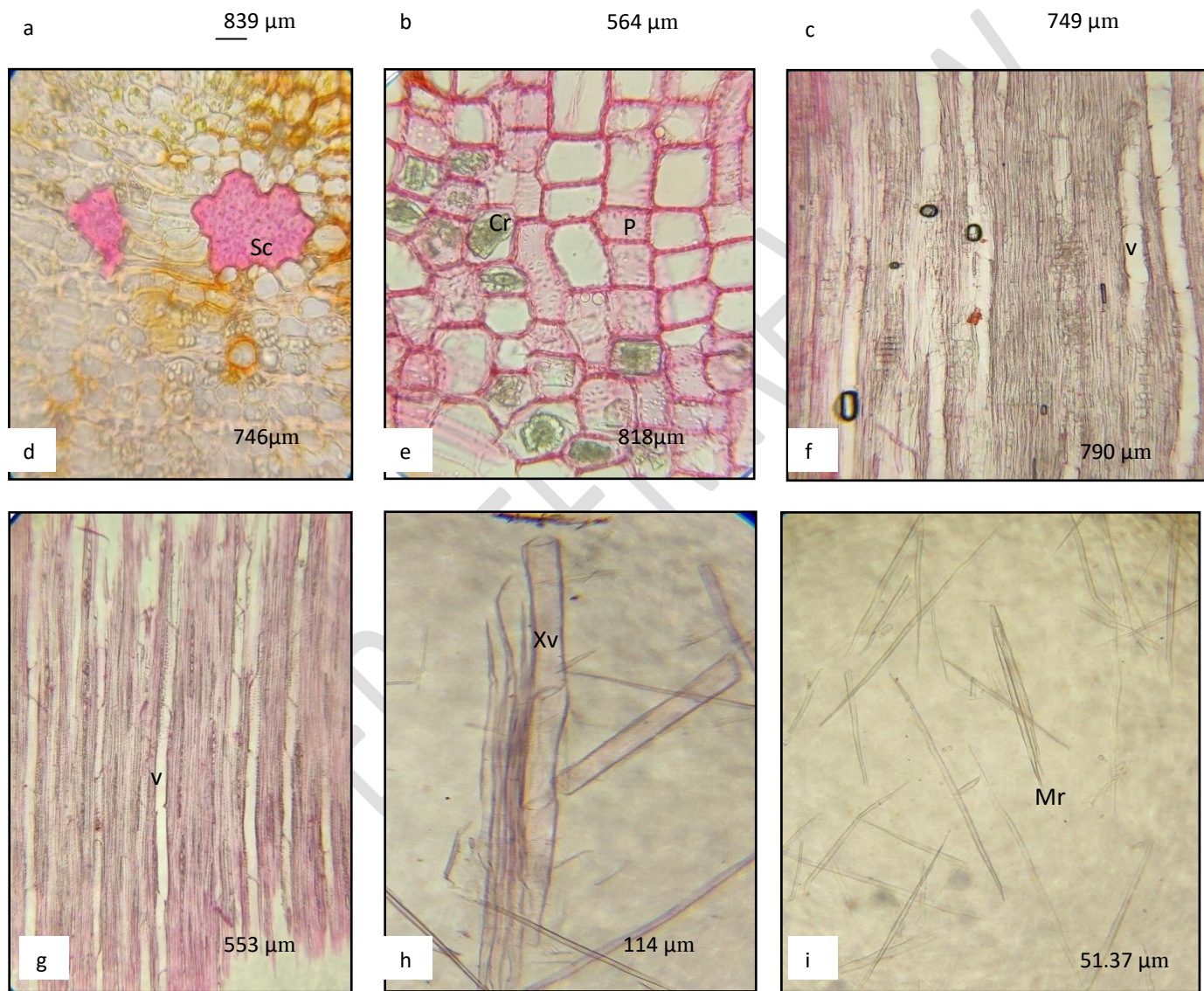
Cl= Cork layer , C=C  
vessels (40x), Mr= M  
medullary layer , V= vessels, Sc= Sclerides, Cr= Crystalliferous cells

Ph = phloem, X = xylem, Xylem  
m medullary layer, Pm= Phloem



P

Xm



**Bibliography.**

**Abdela, G., & Sultan, M. (2018).** Indigenous Knowledge , Major Threats and Conservation Practices of Medicinal Plants by Local Community in Heban Arsi District , Oromia , South Eastern Indigenous Knowledge , Major Threats and Conservation Practices of Medicinal Plants by Local Community i. *Advances in Life Science and Technology*, 68, 8–26.

**Advisor, K. T. (2017).** *Ethnobotanical Study of Medicinal Plants Used by the Local People of Akaki District, East Shewa Zone, Oromia Regional State, Ethiopia.*

- Agize, M., Demissew, S., & Asfaw, Z. (2013).** Ethnobotany of Medicinal Plants in Loma and Gena Bosa Districts ( Woredas ) of Dawro Zone , Southern Ethiopia. *Topclass Journal of Herbal Medicine*, 2(9), 194–212.
- Alemayehu, G., Asfaw, Z., & Kelbessa, E. (2015).** Plant diversity and ethnobotany in Berehet District, North Shewa Zone of Amhara Region (Ethiopia) with emphasis on wild edible plants. *Journal of Medicinal Plants Studies*, 3(6), 93–105.
- Arinathan, V., Mohan, V. R., Britto, A. J. De, & Murugan, C. (2007).** Wild edibles used by Palliyars of the western Ghats , Tamil Nadu. *Indian Journal of Traditional Knowledge*, 6(1), 163–168.
- Bayissa, K. D. (2015).** *Ethnobotanical study of medicinal plants used to treat human and livestock ailments in and around Chato natural Forest, Horo District, Horo Guduru Wollega Zone, Western Oromia, Ethiopia.*
- Birhan, Y. S., Kitaw, S. L., Alemayehu, Y. A., & Mengesha, N. M. (2017).** Ethnobotanical Study of Medicinal Plants used to treat Human Diseases in Enarj Enawga District , East Gojjam zone, Amhara region, Ethiopia. *SM Journal of Medicinal Plant Studies*, 1(1), 1–20.
- Chamberlain, Charles, J. (1920).** *Methods in plant histology* (3rd ed.).
- Dires, H. (2017).** *An ethnobotanical study of medicinal plants of anuak and nuer peoples in Itang district, Gambella region, Ethiopia.*
- Evert, R. F. (2006).** Esau's Plant Anatomy Meristems, Cells, and Tissues of the Plant Body: Their Structure, Function, and Development. In *A John Wiley & Sons, Inc., Publication* (3rd ed.).
- Gemedo-dalle, T., Maass, B. L., & Isselstein, J. (2005).** Plant biodiversity and ethnobotany of Borana pastoralists in southern Oromia, Ethiopia. *Economic Botany*, 59(1), 43–65.
- Getaneh, S., & Girma, Z. (2014).** An ethnobotanical study of medicinal plants in Debre Libanos Wereda, Central Ethiopia. *African Journal of Plant Science*, 8(7), 366–379.
- Geyid, A., Abebe, D., Debella, A., Makonnen, Z., Aberra, F., Teka, F., Kebede, T., Urga, K., Yersaw, K., Biza, T., Mariam, B. H., & Guta, M. (2005).** Screening of some medicinal plants of Ethiopia for their anti-microbial properties and chemical profiles. *Journal of Ethnopharmacology*, 97(3), 421–427.
- Giday, M., Teklehaymanot, T., Anmut, A., & Mekonnen, Y. (2007).** Medicinal plants of the Shinasha , Agew-awi and Amhara peoples in northwest Ethiopia. *Journal of Ethnopharmacology*, 110, 516–525.
- Graham, J. G., Quinn, M. L., Fabricant, D. S., & Farnsworth, N. R. (2000).** Plants used against cancer – an extension of the work of Jonathan Hartwell. *Journal of Ethnopharmacology*, 73, 347–377.
- Herrera, C. M. (1984).** The Annual Cycle of *Osyris Quadripartita* , A Hemiparasitic Dioecious Shrub of Mediterranean Scrublands. *Journal of Ecology*, 72, 1065–1078.

- Kefalew, A., Asfaw, Z., & Kelbessa, E. (2015).** Ethnobotany of medicinal plants in Ada'a District, East Shewa Zone of Oromia Regional State, Ethiopia. *Journal of Ethnobiology and Ethnomedicine*, 11(25), 1–28.
- Khandelwal, K. R., & Sethi, V. (2019).** *Practical Pharmacognosy techniques and Experiments* (3rd ed.).
- Khare, C. P. (2007).** *Indian Medicinal Plants*.
- Mabberley, D. J. (2018).** *Mabberleys Plant- Book*.
- Maryo, M., Nemomissa, S., & Bekele, T. (2015).** An ethnobotanical study of medicinal plants of the Kembatta ethnic group in Enset-based agricultural landscape of Kembatta Tembaro (KT) Zone, Southern Ethiopia. *Asian Journal of Plant Science and Research*, 5(7), 42–61.
- Meragiaw, M., Asfaw, Z., & Argaw, M. (2015).** Indigenous Knowledge ( IK ) of Wild Edible Plants ( WEPs ) and Impacts of Resettlement in Delanta , Northern Ethiopia. *Research and Reviews: Journal of Herbal Science*, 4(3), 8–26.
- Mesfin, F. (2007).** *An ethnobotanical study of medicinal plants in Wonago Woreda, Snnpr, Ethiopia*.
- Metcalf, C. R., & Chalk, L. (1965).** *Anatomy of the Dicotyledons- Vol. II*. Oxford University Press, USA.
- Mouhajir, F., Hudson, J. B., Rejdali, M., & Towers, G. H. N. (2001).** Multiple Antiviral Activities of Endemic Medicinal Plants Used by Berber Peoples of Morocco. *Pharmaceutical Biology*, 39(5), 364–374.
- Nianhe, X., & Gilbert, M. G. (2003).** Flora of China. In *England: Science Press (Beijing) and Missouri Botanical Garden Press*.
- Rao, T. A., & Das, S. (1979).** Typology of foliar tracheoids in angiosperms. *Proceedings of the Indian Academy of Sciences*, 88 B(5), 331–345.
- Shyaula, S. L. (2012).** A review on genus *Osyris* : Phytochemical constituents and traditional uses. *Journal of Natural Pharmaceuticals*, 3(2), 61–70.
- Silva, J. A. T. Da, Kher, M. M., Soner, D., & Nataraj, M. (2016).** African Sandalwood or Nepalese Sandalwood : a Brief Synthesis. *Notulae Scientia Biologicae*, 8(1), 57–61.
- Simpson, M. G. (2010).** Diversity and Classification of Flowering Plants: Eudicots. In *Plant Systematics* (Vol. 315).
- Singh, N. P., Lakshminarasimhan, P., Karthikeyan, S., & Prasanna, P. V. (2000).** *Flora of Maharashtra State, Dicotyledons* (Vol. 1).
- Singh, N. P., Lakshminarasimhan, P., Karthikeyan, S., & Prasanna, P. V. (2001).** Flora of Maharashtra State: Dicotyledones. In *Flora of India Series 2* (Vol. 2).
- Stevens, W. C. (1907).** *Plant anatomy*.

- Subba, B., & Basnet, P. (2014).** Antimicrobial Activity of Some Medicinal Plants from East and Central Part of Nepal. *International Journal of Applied Sciences and Biotechnology*, 2(1), 88–92.
- Wallis, T. E. (1939).** *Textbook Of Pharmacognosy*.
- Wilson, B. (2018).** *Osyris lanceolata*. *The IUCN Red List of Threatened Species*, 8235, 1–8.
- Woldemichael, G. M., & Wink, M. (2002).** Concomitant occurrence of pyrrolizidine and quinolizidine alkaloids in the hemiparasite *Osyris alba* L. (Santalaceae). *Biochemical Systematics and Ecology*, 30(2), 139–149.
- Worku, A. (2018).** Ethnobotanical study on the use and knowledge of medicinal plants at three kebeles of Fedis district of Oromiya Regional state; adjacent to the Babile Elephant Sanctuary, Eastern Ethiopia. *Journal of Medicinal Plants Studies*, 6(5), 15–20.
- Yohannis, S. W., Asfaw, Z., & Kelbessa, E. (2018).** Ethnobotanical study of medicinal plants used by local people in Menz Gera Midir District , North Shewa Zone , Amhara Regional State , Ethiopia. *Journal of Medicinal Plants Research*, 12(21), 296–314.
- Zhen, S. (2022).** Flora of China. In *Flora of China* (p. 211).
- Zobel, A. M. (1985).** Ontogenesis of tannin coenocytes in *Sambucus racemosa* L. I. Development of the Coenocytes from Mononucleate Tannin Cells. *Annals of Botany*, 55(1), 765–773.