

MICROSCULPTURE AND MALE GENITALIA FOR SOME SPECIES OF ROVE BEETLES
FAMILY (STAPHYLINIDAE) IN DIYALA PROVINCE

ABSTRACT

The research study description Microsculpture of elytron pit and male Genitalia for Five Species of rove beetles statement and the differences between them and reinforced studies pictures and illustrations qualities . back to subfamilies Tachyporinae, staphylininae.

Key word: Staphylinidae, Coleoptera, Fauna, Iraq,

INTRODUCTION

Called order Staphylinidae (rove beetles) has the ability to move the upper part of the abdomen in away to intimidate their enemies and bring female (Majka & Klimaszewski, 2010) , (Richards & Davies , 1960) . the family is small elytra than most abdominal cut leaves naked . the average length of species is up to 7 mm (Lott , 2009) , multiple colors (Schomann *at el* , 2008) may be several colors (Gamarra & Outerelo , 2008) in the same insect , and are studied by (Hadi , 1915) . the insects found in different environmental places (Juan , 2003) , are characterized by some species of **medical** family because of its importance as skin irritation (Enver *et al* , 2014) .

MATERIALS AND METHODS

Species collected during search :

- 1- *Sepedophilus immaculatus* stephens (7) samples
- 2- *Gabrius Splendidulus* Gravenhorrest (290) samples
- 3- *Philonthus decorus* Gravenhorrest (4) samples er
- 4- *Quedius laterels* Gravenhorrest (13) samples
- 5- *Ocypus olens* Muller (5) samples

From Iraq diyala province .

Used in the collection of insect light traps and networks corethra .

After killing insects by ethyl alcohol proved especially staples and then are marked and stored compound containing the lens Microscope (ocular micrometer) . were filmed and male genitalia using (Dino lite) microscope technology . and it has use of several keys to the diagnosis insects ,(Hackston , 2013) (Malcolm, 1930) , (Tottenham ,1954) .

RESULT AND DISCUSSION

The exact recipe is considered an important Microsculpture and Male genitalia in the classification of species of this family that has been selected as member of species , S .

immaculatus belonging to subfamily Tachyporinae other species goes back to subfamily staphylininae.

3-1- *Sepedophilus immaculatus* Stephens (Fig1)

Has been seen through the study of the Microsculpture for this kind that there is an offer pit emergence of fluff that emerged from them . And it is filled with the cuticle . the fluff wide and short .

The male genitalia is characterized by the end of the aedeagus base and the apex is almost viewed .

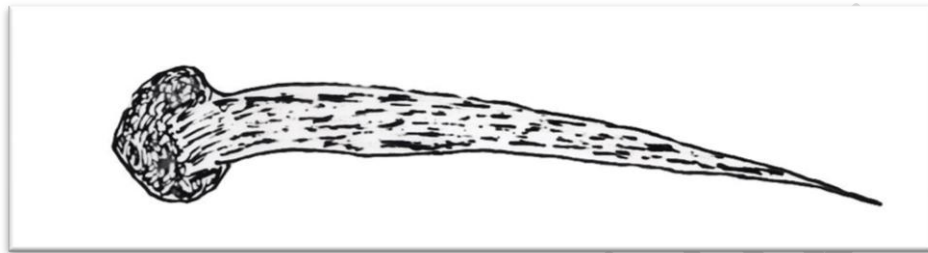


Fig. 1-A (Microsculpture)



Fig. 1-B (Dino- lite)

3-2- *Gabrius splendidulus* Gravenhorst (Fig2)

The Microsculpture shows the small pit and a few cuticle with the fluff long and thin. The male genitalia characterized by the end of the aedeagus . A base view from the Apex .

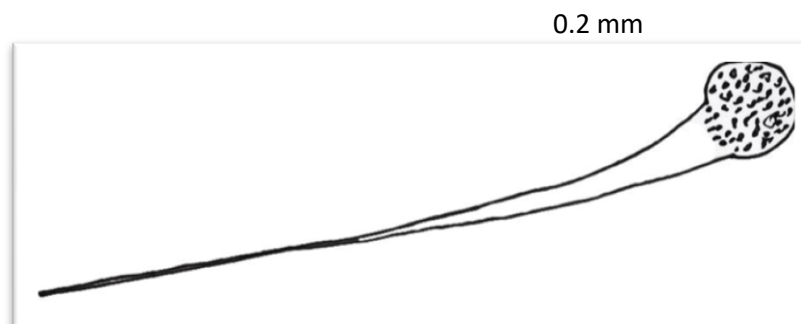


Fig . 2-A Microsculpture)



Fig . 2-B (Dino- lite)

3-3- *Philonthus decores* Gravenhorst (Fig3)

The pit can be divided into two pieces as if the largest of the species, from the middle of fluff long and thin. In the middle of pit cuticle in circles. The aedeagus of male genitalia is around the edge of the wide apex, the base of aedeagus is wide apex.

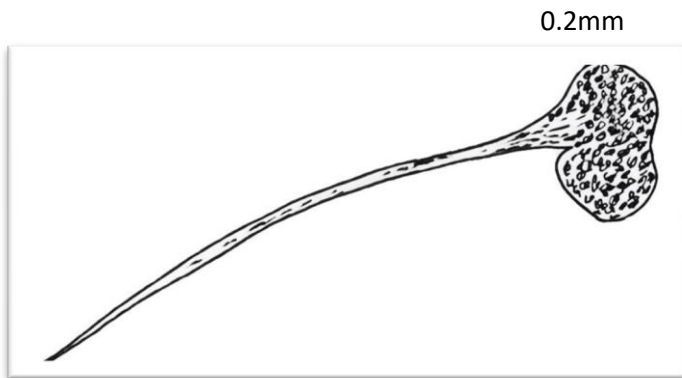
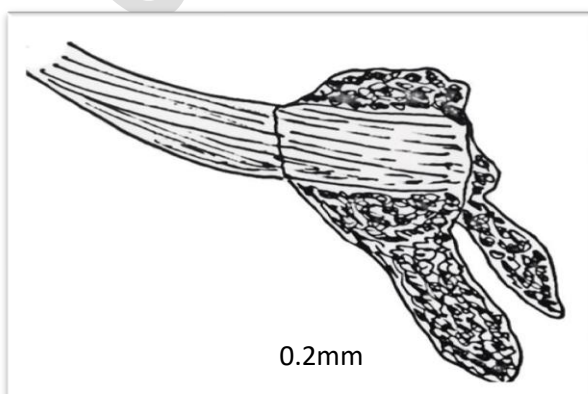


Fig 3-A(Microsculpture)

B- (Dino- lite) xz,,,,/

3-4- *Quedius laterel* Gravenhorst (Fig4)

The pit in this circular type with two branches, one of which is greater than the other inside cuticle in circles. upper from the middle of pit fluff, broad. the length of the aedeagus length paramere. the aedeagus tapered end and the base width apex.



3-5- *Ocypus olens* Muller (Fig5)

Pit almost on the square – shaped sheath their edges thick there cuticle them in the form of small circles protrudes from the middle of pit fluff broad .

The length of the aedeagus almost the same paramere , the same width circular apex Black color

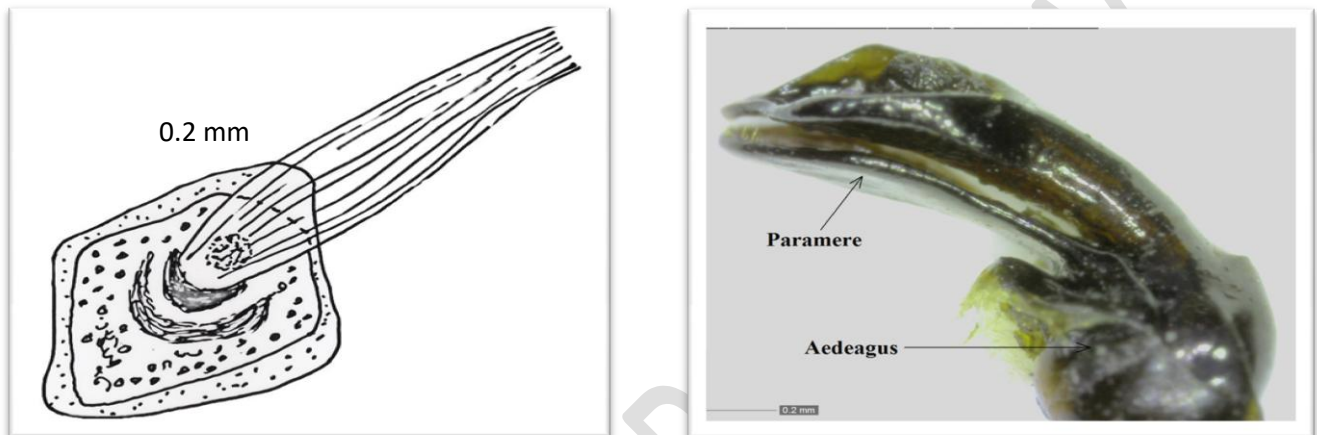


Fig. 5- (Microsculpture)

REFERENCE

- Enver , T .; Isin , M.D.; Yeliz , K . and Burcu , I . (2014) paederus Dermatitis Mimicking Herpes Zoster . J . of the Turkish Academy of Dermatology .4 :1-3 .
- Gamarra , P . and Outerelo , R.(2008) Catalogo iberobaleaar delos Staphylinidae (Coleoptera : Staphylinidae) . j. of .Boietin Sociedad Entomol Aragonesa, 42 : 197 – 251 .
- Hackston , M.(2013) . Key to the British genera and species (Coleoptera : Staphylinidae) . Published by H.F. net. de / Coleo / texte / Staphylinidae . htm .
- Hadi , K.A. (1915) Taxonomic study on the Rove Beetles (Coleoptera : Staphylinidae) in some provinces of Iraq . thesis . faculty of Basic Education university of Al – Mustansiriayah . 187 p . (in Arabic) .
- Juan ,M . (2003) . Ecological patterns in necrophilous Staphylinidae (Insecta : Coleoptera) from Tlayacapan , Morelos and Mexico . Acta zoological . 89 : 69 – 83 .
- Lott , D.A.(2009) The Staphylinidae (Rove beetls) of Britian and Ireland . Systematic Entomology . 8 :37 – 632 .

- Majka , G.C. and Klimaszewski , J.(2010) , Contribution to the Knowledge of the Aleocharinae Coleoptera , Staphylinidae in the Maritime provinces of Canada. Zookeys . j. , 46 : 15 – 39 .
- Malcolm , M.B. , F.E.S. (1930) . The fauna of British India including Ceylon and Burma : Coleoptera : Staphylinidae Vol 1 , 2 , 3 , 4 , London : Taylor and Francis , Red lion Court , F1 , EET , Street .
- Richards , O.W and Davies , R.O., (1960) . General Text Book of Entomology . Tenth edition . Volume 2 : Classification and Biology . 1865 p .
- Schomann , A ; Afflerbach , K. and Betz , O . (2008) . Predatory behavior of some central European Pselaphine beetles (Coleoptera : Staphylinidae : Pselaphinae) with description of relevant morphological features of their heads . Eur . j .of Entomol. 105 : 889 – 907 .
- Tottenham , C .E . 1954 . Handbooka for the Identification of British Insecta . (Coleoptera : Staphylinidae) . Royal Entomological Society 8 : 1 – 80 .

UNDER PEER REVIEW