

ASSESSMENT OF SAWMILL AND OTHER ASSOCIATED WASTES ON THE WATER QUALITY OF ILO-ABUCHI CREEK, RIVERS STATE, NIGER DELTA

ABSTRACT

A study was conducted on physicochemical parameters water from Ilo-abuchi, creek Niger Delta, Nigeria. The study aimed at evaluating the impact of abattoir and saw-mill waste on the water quality. The physicochemical parameters investigated was from February to July 2020 and the samples were analysed for pH, Temperature, Salinity, Conductivity, Total Suspended Solid (TSS), Total Dissolved Solid (TDS), and Total alkalinity using an in-situ Handheld Multimeter (Milwaukee Model pH600 and Laboratory Benchtop meter 860033-model. The Dissolved Oxygen (DO) was measured using Winkler's method. Biochemical Oxygen Demand (BOD) was determined by the 5-day BOD test (APHA, 2005). Turbidity was measured using a 20cm diameter Secchi disc. Total alkalinity was determined in accordance with American Society for Testing and Materials (ASTM D 1067B) Nitrate, Chloride, Phosphate and Sulphate were determined using the method recommended by APHA 2340C (1995) standard. Water Temperature ranges between 27.7 -27.8 °C, pH 6.65 - 6.73, Conductivity 438.2 - 494.2 µS/cm, Salinity 2.8 -3.23ppt, TDS 77 – 87.27 mg/l, TSS 30.7 - 37.66 mg/l, DO 3.19 – 3.46 mg/l, BOD 2.05 - 3.38 mg/l, Turbidity 5.41- 5.98 NTU, Nitrate 8.78 - 10.02 mg/l, Hardness 31.77 - 33.98 mg/l, Chloride 23.03 -25.7 mg/l, Phosphorus 0.31 - 0.51 mg/l, Sulphate 13.27 - 16.60 mg/l. Alteration in water quality were more pronounced in the wet season (May, June and July) compared to the dry season (February and March and April). The nature of the effluents discharged into the creek were found to be essentially within the acceptable limits prescribed by law except for TSD and turbidity. These two parameters were slightly above the WHO standards. It is therefore recommended that environmental regulatory agencies such as NESREA and Ministry of Environment should device mechanisms to enforce existing environmental regulations concerning the discharge of effluents from different sources into the Ilo-abuchi Creek, which will aid in dumping of untreated wastes form the abattoir and by extension conserve the aquatic life therein.

Keyword: Abattoir, saw-mill Waste, Water Quality, Ilo-abuchi and Creek

INTRODUCTION

Manufacturing operations that produce raw wood, such as sawmill, paper mills, furniture manufacturers, discharge from abattoirs, sewage and domestic wastes are the major source of pollution in the Nigeria water ways [1]. Water can become polluted either through point sources or non-point sources. The physical and chemical properties of water immensely influence its uses, the distribution and richness of the biota [2]. Sawmill wood waste in developing countries

especially in Nigeria are known to directly or indirectly pollute the environment through the various processes [3]. There is lack of treatment facilities for abattoir and sawmill wood effluents in majority of developing countries [4]. The pollution of water bodies from sawmill wood wastes may result in substantial environmental and public health hazards [5] [6] and [7]. In Nigeria, local abattoirs which are the major meat processing industries are typically located close to water bodies so as to ease waste disposal [6]. Municipal solid wastes and sawmill wood effluents also reduce oxygen in water and endanger aquatic life which leads to life threatening effects. The organic nutrients added to ground water through wastes from some municipal solid such as sawmill woods, abattoir leachates and many other associated products produce excessive microbial growth causing unpleasant tastes and odour of water from this source [3].

Among other forms of waste, solid waste constitutes a major source of environmental pollution that introduces chemical substances above their threshold limit into the environment [8]. The wastes from most anthropogenic waste disposals are often not separated into solid, liquid and fats could be highly organic. Negative effects and impaired by effluents discharges from the abattoir and saw-mill industries causes alteration in water quality are more pronounced in the dry season compared to the wet season [8], [7].

Wood residue leachates are produced when water percolates, or flows, through wood residue; storing wood waste in pits where it has contact with groundwater creates another source of leachate [2]. Typically, pure wood residue leachate is a black liquid with petroleum like odour that causes foaming water. Wood residue decomposition is a slow process. These wastes are washed down into the river [9]. Saw wood waste could significantly intensify the amounts of nitrogen, phosphorus, and total solids in the receiving water body [10]. An abattoir pollutes the environment either directly or indirectly from their various processes [11]. In buttress of the

previous observation, that effluent discharged from sawmill industries, sewage and domestic wastes and slaughter houses has caused the deoxygenating of rivers because there are usually no modern landfills for disposing of solid waste in the majority of the dumpsites in Nigeria [12]. Hence, waste sorting for segregating degradable, non-degradable and recyclable materials is rarely practiced [13].

There is high rate of anthropogenic activities in this area such as discharge from abattoirs, sawmill industries, sewage and domestic wastes. The study area is a source of water, transportation and fish food for local consumers and artisanal fishers. Analyzing the Physicochemical parameters of this area will show the extent of damage done on this water through these activities and it also determines its impact on the water alongside its fisheries resources.

Wood shavings and leachates are sources of inert solids as well as toxic pollutants that directly clog fish sill and indirectly reduce light penetration [2] which limits productivity contamination of the aquatic environment, makes aquatic organism vulnerable [5], fish immune systems in particular, are weakened leading to increased incidence of parasites.

Water serves many purposes such as drinking water source, bathing and cleaning, agricultural irrigation, fishery, sustainable use for industry, boosting of natural ground water level, aesthetic value and many other livelihood [13]. It is therefore very important that all sources water (including the Ilo-abuchi Creek water) harnessed for human uses should be consciously monitored for and protected from pollutants. Consequently, this study is focused on analyzing some important physicochemical parameters of the Ilo-abuchi Creek water. This would help researchers, policy makers and regulators to understand the pollution impact of the Abattoir and sawmill wastes on the creek water/organisms inhabiting it and this will be used to plan pollution

abatement programmes for the water of the creek. Ultimately, this results in scientifically guided ecological protection actions for aquatic organisms inhabiting the creek waters and the prevention of possible adverse health that the use of its water could ordinarily impact on humans either directly or indirectly.

MATERIALS AND METHOD

Study Area

The study area is a tidal creek with exposed mud flats at low tide, located at latitude $4^{\circ}47'16.8443''$ and long $E6^{\circ}59'5.2926''$. The major vegetation along this creek is mangrove vegetation mainly *Rhizophora sp*, *Nypa fruticans* and *Avicennia sp*. This river water is important as it serves as a means of transportation for humans, domestic use and source of livelihood for fishermen. Also, the surrounding environment is characterized with various human activities such as waste disposal, fishing activities and frequent defecation on the banks of the creek. This research cuts across three stations along the creek with {Station 1: Lat $N4^{\circ}47'16.8443''$ and Long $E6^{\circ}59'5.2926''$, Station 2: Lat $N4^{\circ}47'13.158''$ and Long $E6^{\circ}59'10.512''$, Station 3: Lat $N4^{\circ}47'10.30308''$ and Long $E6^{\circ}59'19.4784''$ }.

The main major source of water that feeds Ilo-abuchi Creek with water is from Bonny River which flows into Ilo-Abuchi Creek and to Diobu area of Port Harcourt metropolis. Ilo-abuchi Creek is bounded by Eagle Island on the South-West of Port Harcourt and bounded on the North by the Rivers State University of Science and Technology in Nkpolu-Oroworukwo area of Diobu. This creek is influenced by tidal flux as it flows back and forth in different times and seasons. The major saw sawmill serving for the various construction industry wood needs of the Port Harcourt city and Rivers state at large is located in the Diobu axis of the Ilo-abuchi creek. As shown in plate 2, the logs of wood cut from remote areas are often transported bounded

batches floated across long distances to the Diobu area of the Ilo-abuci where the creek is located. The logs remain in the water until they are taken into the various small, medium and relatively large privately owned Sawmill enterprises that are also located across a vast stretch of the creek. These Sawmills are operated with non or minimal consideration for the environmental regulations that should guide the operations of such Sawmills. Consequently, virtually all the wood dusts and shavings generated from the sawmilling operations are directly discharged into the creek untreated. This has made the water of the creek in this area of the creek to always appear very dark in colour all year round. The water also has a putrefactive smell characteristic of continuous decay of woody materials in water. Due to the relatively large areas covered by this sawmill and the high intensity of commercial activities associated with its operational linkages, it has induced several other activities that amplifies pollution from several anthropogenic activities. Some of these activities include indiscriminate proliferation of slaughter platforms or micro abattoirs utilizing wood fuels arising from the Sawmill operations for roasting their slaughtered animals, prior to dressing them. Both the soot/ash deposits and other effluents generated in the process of dressing the animals are all discharged directly into the waters of the creek. The area is also a major transportation hub for sawn wood and other human and mechanical materials/tools required for the sawmill industry and its associated commercial activities to thrive. All these activities lead to the area to be densely populated, resulting in all forms of heightened anthropogenic activities polluting the waters of the creek. Examples include indiscriminate defecation directly into the creek and dumping of household wastes, waste hydrocarbon oil dispensed from serviced machineries, plastics and other biodegradable and non-biodegradable materials. Plates 1 to 3 shows the obvious typical pollution scenarios from various types of waste generating activities (sawmills, Animal slaughters houses,

public toilets, artisans’ workshops etc.) that impacts the creek water from a collection of sources that can be considered a complex pollution stream impacting the creek water.

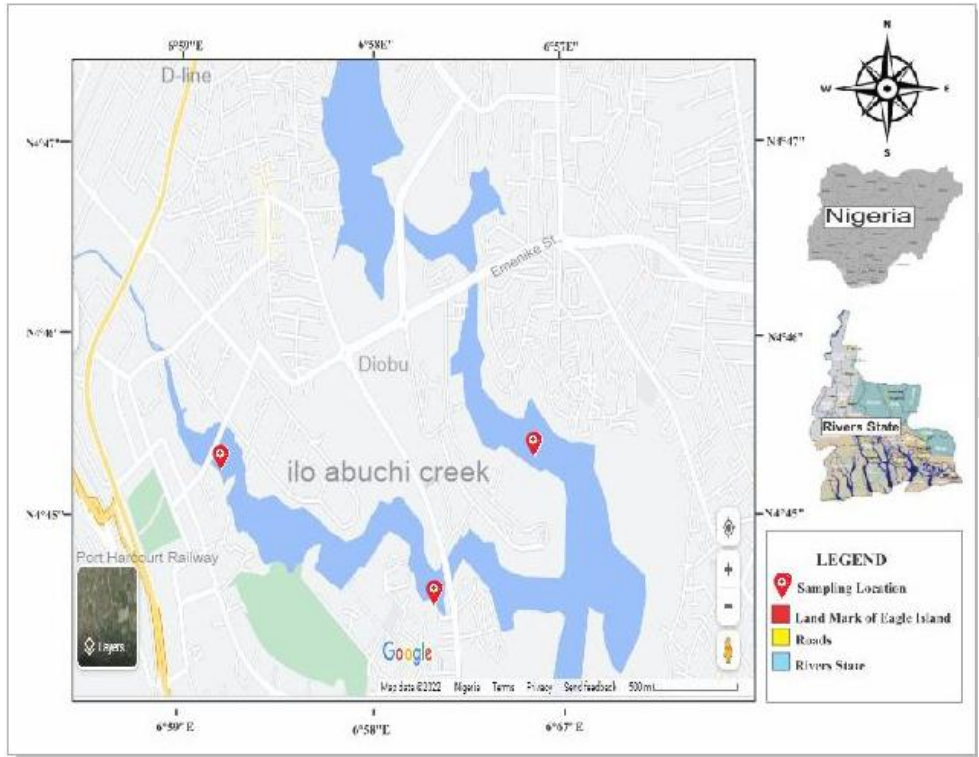


Figure 1: Map showing the sampling stations



Plate 1: Station 1



Plate 2: Station 2



Plate 3: Station 3

Sampling Procedure

The sampling stations from which water samples were collected for this study areas indicated in figure 1. A total of three stations were chosen and were at least 500 meters apart along the Creek. Based on the peculiarities and features observed around the study area of this creek, three sampling

stations were selected within the Creek to reflect different activities in the areas: Station I, Station II and Station III. Water Samples were collected for analysis. All sites were geo-referenced using a handheld global positioning system (GPS) receiver unit (Magellan GPS 315) to generate geographic coordinates (longitudes and latitudes) of the sampling area. Sampling was carried out once in a month between February to July 2020. This was carried out during the first week of each sampling month.

Water Samples Collection

Surface water samples were collected in pre-cleaned high-density Schott glass bottles. The sampling bottles were cleaned using detergent then rinsed with tap water and soaked in 50% hydrochloric acid (HCl) for 24 hours before sampling. The bottles were then washed with tap water and rinsed with triple distilled water before sampling. The bottles were cleaned to ensure that they are not contaminated with metal residue before sampling and to prevent adhering of metals to glass surfaces, since acidification of the glass enhances metals dissolution. Samples after collection were properly sealed and transported to the laboratory for analysis.

Physicochemical Parameters Analysis

Surface water samples were collected using Schott glass bottles. The pH, Temperature, Salinity, Conductivity, Total Suspended Solid (TSS), Total Dissolved Solid (TDS) Total alkalinity of the water were measured using an in-situ Handheld Multimeter (Milwaukee Model pH600 and Laboratory Benchtop meter 860033-model). The Dissolved Oxygen (DO) was measured using Winkler's method. Biochemical Oxygen Demand (BOD) was determined by the 5-day BOD test [14]. Turbidity was measured using a 20cm diameter Secchi disc. Total alkalinity was determined in accordance with American Society for Testing and Materials (ASTM D 1067B). Nitrate,

Chloride, Phosphate and Sulphate were determined using the method recommended by APHA 2340C [14] standards.

Statistical Analysis

Multiple Range Test [15] was used to determine the difference in analyzed parameters between the seasons and across Stations sampled. Test of significance was based on a 5% ($P < 0.05$) level of probability.

RESULTS

Physicochemical Parameters Across the Stations

The results of the physicochemical characteristics of the three sampled points along Ilo-abuchi are shown in Table 1. The results showed no significant ($P > 0.05$) variation in most of the physicochemical parameters across the station. However, water temperature was highest in station 2 (27.83 ± 0.38) and the lowest was recorded in station 1 (27.68 ± 0.37). The pH value was highest (6.73 ± 0.16) in station 1 and lowest in station 2 (6.49 ± 0.12). No significant ($P > 0.05$) differences were observed in the Temperature and the pH values. The highest value for conductivity was recorded in station 2 (494.16 ± 61.44) and the least was recorded in station 3. There was significant difference ($P < 0.05$) between the stations. Salinity was highest in station 1 (3.23 ± 2.60) and the least was recorded in station 3 (2.79 ± 7.99). Total dissolved solid (TDS) was highest in station 3 (87.27 ± 6.86) and the least was in station (77 ± 4.72). Total suspended solid (TSS) was highest in station 3 (37.66 ± 12.81) and the lowest was recorded in station 2 (30.66 ± 7.39) and there was significant difference ($P < 0.05$) between the stations. The Dissolved oxygen (DO) was highest in station 1 (3.46 ± 0.77) lowest in station 3 (3.19 ± 0.63). The water was more turbid in station 2 (5.98 ± 0.36) and least in station 1 (5.41 ± 0.52). No significant ($P > 0.05$) differences were observed between the stations for DO and Turbidity. Biological Oxygen Demand (BOD) value (3.68 ± 4.90)

was highest in station 2 and the least (2.05 ± 4.84) was recorded in station 1. No significant ($P > 0.05$) differences were observed between the stations. Nitrate recorded the highest value in station 3 (10.71 ± 2.51) and the least at station 1 (8.78 ± 2.06). The water hardness was highest in station 2 (33.98 ± 2.62) while the least was observed in station 1 (31.77 ± 1.73). No significant ($P > 0.05$) differences were observed between station 2 and 3 but there was significant difference ($P < 0.05$) between 1 and the others for Nitrate and Hardness. Chloride was highest in station 3 (25.68 ± 4.974) and least in station 1 (23.03 ± 4.387). Phosphorus was reported highest in station 3 (0.51 ± 40.76) and least in station 2 (0.31 ± 35.79). The highest value of Sulphate was observed in station 3 (16.60 ± 2.87) and the least was recorded in station 1 (13.27 ± 1.91). There was significant difference ($P < 0.05$) between the values of Phosphorus, Chloride and Sulphate across the stations.

Table 1: Mean values of physiochemical parameters for the three sampled stations

Parameters	Station 1	Station 2	Station 3	Range	WHO 2006
Temperature	27.7 ± 0.4^a	27.8 ± 0.4^a	27.8 ± 0.5^a	27.7 - 27.8	24 - 28 °C
pH	6.7 ± 0.2^a	6.5 ± 0.1^a	6.7 ± 0.1^a	6.65 - 6.7	6.8 - 8.5
Conductivity	456.5 ± 3.9^{ab}	494.2 ± 1.4^a	438.3 ± 1.4^b	438.2 - 494.2	1000 μ S/cm
Salinity	3.2 ± 2.6^a	2.95 ± 3.5^a	2.8 ± 7.9^a	2.8 - 3.23	-
TDS	77 ± 4.7^b	79 ± 5.4^{ab}	87.3 ± 6.9^a	77 - 87.27	200 mg/l
TSS	30.8 ± 9.2^b	30.7 ± 7.4^b	37.7 ± 12.8^a	30.7 - 37.7	20 mg/l
DO	3.5 ± 0.7^a	3.4 ± 0.7^a	3.2 ± 0.6^a	3.19 - 3.5	4 mg/l
BOD	2.5 ± 4.8^a	3.7 ± 4.9^a	3.4 ± 4.3^a	2.05 - 3.4	10 mg/l
Turbidity	5.4 ± 0.5^a	5.9 ± 0.4^a	5.8 ± 0.2^a	5.41 - 5.9	5 NTU
Nitrate	8.8 ± 2.1^b	10.0 ± 2.2^a	8.8 ± 2.5^a	8.78 - 10.0	10 mg/l
Hardness	31.8 ± 1.7^b	33.9 ± 2.6^a	33.3 ± 2.1^a	31.77 - 33.9	500 mg/l
Chloride	23.0 ± 4.9^b	25.0 ± 4.5^a	25.7 ± 4.4^a	23.03 - 25.7	250 mg/l
Phosphorus	0.5 ± 36.8^{ab}	0.31 ± 35.8^b	0.5 ± 40.8^a	0.31 - 0.51	5 mg/l
Sulphate	13.3 ± 1.9^b	14.2 ± 1.2^{ab}	16.6 ± 2.9^a	13.27 - 16.6	250 mg/l

*Means of values with different superscript on the same row are significantly different from each other

Physicochemical Parameters Across the Months

The results of the physicochemical characteristics of the Iluo-Abuchi axis of the Iwofe River across the six months (February to July) are presented in Tables 2. There were significant variations in most of the physicochemical parameters across the months. February recorded the

highest temperature value (29.2 ± 0.1) and the least value (26.93 ± 0.2) was recorded in months of July and there was significant difference ($P < 0.05$) between the different months. The pH value was highest (6.86 ± 0.27) in the month of February and lowest in May (6.42 ± 0.12). There were significant ($P > 0.05$) differences observed across the months. The highest value for conductivity was observed in the months of February (601.66 ± 0.7) and the least was recorded in the month of July (350.33 ± 0.14). There was significant difference ($P < 0.05$) between the conductivity across the different months. May recorded the highest Salinity value (4.73 ± 31.86) while the least value was observed in in the month of February (2.68 ± 0.82). There were significant ($P > 0.05$) differences was observed across the months. Total dissolved solid (TDS) was reported highest in the month of July (32.66 ± 41.83) while the least value was observed in June (23.66 ± 9.59). Total suspended solid (TSS) was highest in the month of February (6.3 ± 9.86) and the lowest was recorded in May (2.5 ± 1.52). July recorded the highest Dissolved oxygen (DO) value (4.63 ± 0.14) and the lowest in the month of February (2.23 ± 0.03). There was significant difference ($P < 0.05$) for DO and TSS across the stations. Biological Oxygen Demand (BOD) was highest (2.66 ± 1.45) in the month of June while the least value (2.10 ± 0.0) was observed in the month of February. No significant ($P > 0.05$) differences were observed between the BOD values across the months. The turbidity was highest (6.76 ± 0.26) in the month of July and the least value (4.63 ± 0.43) was recorded in April. Nitrate recorded the highest value (7.83 ± 1.71) in the month of February and the least value (4.06 ± 0.75) was recorded in the month of April. The highest water hardness (39.53 ± 2.34) was observed in the month of May while the least (27.0 ± 2.08) was recorded in March. Chloride was highest (33.66 ± 20.93) in the month of May and least (20.16 ± 0.61) was recorded in the month of March. Phosphorus was highest (0.57 ± 8.98) in February and least (0.04 ± 0.0) was recorded in the month of April. The highest value (21.53 ± 2.11) of Sulphate was

recorded in the month of February and the least was (8.66±0.88) was observed in the month of April. There was significant difference (P<0.05) between the values of Nitrate, Hardness, Chloride, Phosphorus and Sulphate across the different months.

Table2: The monthly variation of the mean values of the physicochemical parameters

Parameters	February	March	April	May	June	July	WHO 2006
Temperature	29.2±0.1 ^a	28.4±0.36 ^a	27.5±0.42 ^{ab}	27.6±0.46 ^{ab}	26.93±0.14 ^b	26.93±0.2 ^b	24 - 28 °C
Ph	6.86±0.27 ^a	6.66±0.09 ^a	6.46±0.2 ^a	6.42±0.12 ^a	6.54±0.16 ^a	6.80±0.06 ^a	6.8 - 8.5
Conductivity	601.66±0.70 ^a	587.66±0.93 ^a	438.33±0.84 ^{ab}	378.66±0.11 ^{bc}	362.00±0.58 ^c	350.33±0.14 ^c	1000 µS/cm
Salinity	2.68±0.82 ^b	3.60±0.29 ^{ab}	4.48±9.07 ^a	4.73±31.86 ^a	4.58±30.73 ^a	4.19±14.89 ^a	-
TDS	24±0.66 ^b	35±0.53 ^a	29.0±5.86 ^a	27.0±13.57 ^{ab}	23.66±9.59 ^b	32.66±41.83 ^a	200 mg/l
TSS	6.3±9.86 ^a	6.1±6.02 ^a	4.3±0.88 ^b	2.5±1.52 ^c	2.4±2.08 ^c	2.9±1.73 ^c	20 mg/l
DO	2.23±0.03 ^b	2.76±0.28 ^b	3.60±0.11 ^{ab}	4.14±0.27 ^a	4.80±0.34 ^a	4.63±0.14 ^a	4 mg/l
BOD	2.10±0.0 ^a	2.46±2.66 ^a	2.33±0.88 ^a	2.33±2.02 ^a	2.66±1.45 ^a	2.53±1.45 ^a	20 mg/l
Turbidity	5.0±0.41 ^{ab}	5.53±0.38 ^{ab}	4.63±0.43 ^b	6.20±0.32 ^a	6.26±0.09 ^a	6.76±0.26 ^a	5 NTU
Nitrate	7.83±1.71 ^a	5.46±0.52 ^{ab}	4.06±0.75 ^b	7.41±0.61 ^a	6.83±0.29 ^{ab}	7.43±0.18 ^a	10 mg/l
Hardness	33.06±0.89 ^a	27.0±2.08 ^b	28.10±2.30 ^{ab}	39.53±2.34 ^a	34.76±0.88 ^a	35.60±0.85 ^a	500 mg/l
Chloride	26.66±21.31 ^b	20.16±0.61 ^c	28.0±7.81 ^a	33.66±20.93 ^a	25.66±8.25 ^b	32.33±8.81 ^a	250 mg/l
Phosphate	0.57±8.98 ^a	0.46±1.31 ^a	0.04±0.0 ^c	0.17±0.06 ^b	0.05±0.0 ^c	0.05±0.0 ^c	5 mg/l
Sulphate	21.53±2.11 ^a	17.26±3.54 ^b	8.66±0.88 ^c	12.33±0.88 ^{bc}	12.66±1.20 ^{bc}	15.66±1.45 ^b	250 mg/l

*Means of values with different superscript on the same row are significantly different from each other

DISCUSSION

The results of the water physicochemical parameters are as shown in Tables 1 and 2 and Figure 2 respectively. Abattoir wastes are generally defined as a difficult substrate for anaerobic treatment due to their typically high rates of proteins and lipids. The wastewaters of the entire slaughtering line of both types of abattoirs have high polluting factors when Total Kjeldahl Nitrogen, nitrate and nitrite concentrations are taken into account.

Temperature

Temperature is known to be a critical factor that regulates the biogeochemical activities in the aquatic environment. There were slight variations in the temperature across the three stations during the period of study. The temperature values ranged between 26.93°C and 27.8°C with high temperature of 29.2°C in February and a lower temperature of 26.93°C in July cross the three stations during the sampling period. Similar assertion was made by [16] who stated that

water temperatures were generally higher in February at all points of effluent discharge. During the sampling in July, the temperature remains low due to cold low ambient temperature and shorter photoperiod. The values were within the standard range of 24 to 28°C [17] This variation might be connected with the direct discharge of effluents, which usually have higher temperature than recipient water. This could also be attributed to high ambient temperature in the dry season which is typical of West African rivers [18].

pH

The pH is among the most important parameters in operational water quality study and is the measurement of acid base equilibrium in water [19]. The pH of any water is a measure of the free hydrogen ion and hydroxyl ions which maintain acidic and basic property in the water system. pH is an important indicator of water quality which keeps altering chemically, because it can be affected by chemicals in the water [20]. In the water quality standards prescribed by WHO, desirable dual limits of the pH of potable water are between 6.5- 8.5 and 6.8 - 8.5. However, this study pH results ranged between 6.65 - 6.73. pH values govern the behavior of several other important parameters of water quality like chlorine disinfection efficiency and metal solubility [21].

From the results, the highest values of 6.86 was recorded at station 1 in February and lowest value 6.42 was recorded at station 2 in May were within the recommended levels of 6.5-8.5 [22] and [23]. The Lower pH values recorded during the sampling period could be attributed to the buffering capacity of seawater or due to fresh water influx, low temperature, organic matter decomposition and anthropogenic factors, human or industrial or agricultural activities [18]. The influx of abattoir waste into the creek could be made available by proliferation of markets and other anthropogenic activities around the creek could also be a factor that affected the variation

across the stations and the months [24]. [16] explained that the pH of water is an important environmental factor and the fluctuation in water is linked with the chemical changes, species composition and life processes. This also agreed with [25] who reported that the dumping of anthropogenic and industrial effluents affects the acidity and alkalinity of the water and hence the pH of water bodies.

Conductivity

Electronic Conductivity is a measure of water capability to transmit electric current and also it is a tool to assess the purity of water. Conductivity of water is mainly attributed by the presence of dissolved solids. In the present study, the electrical conductance of water ranged from 350.33 $\mu\text{S}/\text{cm}$ July to 601.66 $\mu\text{S}/\text{cm}$. Higher values of conductivity were reported in in February as the salinity intrusion was severely affected and hence imparting considerable number of ions into the water that may have led to the reduction in July. The values were within the acceptable standard of [23] which is 1000 $\mu\text{S}/\text{cm}$. Relative, the high conductivity recorded during study may be attributed to the predominance of non-leached substratum and the large size of the catchments area [26]. A high level of conductivity reflects the pollution status as well as tropic levels of the aquatic body [27]. Conductivity of water depends upon the concentration of ions and its nutrient status and variation in dissolve solid content. Seasonal variation in the conductivity is mostly due to increased concentration of salt because of evaporation. [18] reported similar result was observed in Tin Can Island creek in Lagos. The report stated that dilution of water during the wet season causes a decrease in electrical conductance due to the addition of rain water.

Salinity

The salinity at the study area measured from February to July ranges from 2.68 to 4.73 where the lowest salinity was at station 3 in the month of February. The values of salinity from the study

showed no significant differences ($P>0.05$) across the three stations. No similar patterns of distribution in salinity were observed in all the months because there was gradual increase between February to May and then a slight decrease from June to July. This may be due to the excessive lowering of water table along the creek leading to reversal of hydraulic gradient and salt water intrusion [8]. For salt water intrusion to occur, permeable formation must have a hydraulic connectivity with sea water either directly or indirectly [1].

Total Dissolved Solids (TDS)

The TDS vary between 77 to 87.27 mg/l. TDS values was within the [23] acceptable limit (1000 mg/l) recorded across the months during the study. Total dissolved solids (TDS) values obtained from this study followed the same trend with TSS values obtained from the samples reported by [28]. The variation of the total dissolved solids could be attributed to the refractive capacity of the water body and the light dispersion pattern which have a significant effect on the heat capacity of the system. Organic effluents from such activities also frequently contain large quantities of suspended solids which reduce the light available to photosynthetic organisms and on settling down, alter the characteristics of river bed, rendering it an unsuitable habitat for many organisms [29].

Biochemical oxygen demand (BOD₅)

Biochemical oxygen demand is a measure of the oxygen requirement for the biochemical of organic materials and the oxygen used to oxidize inorganic materials such as sulfides, ferrous ions and reduced forms of nitrogen. The BOD values variation between 2.05 to 3.38 across the stations and the months which could be attributed to the organic and inorganic wastes generated in the saw wood and especially from surface run-offs and soil erosion during the rainy season months. Moreover, these levels of BOD values at the discharge point could be attributed to the

low DO level, since low DO will result in high BOD and this is a strong indication of pollution [30]. Excessive production of organic matter leads to the buildup of sludge and the mineralization process consumes all dissolved oxygen from the water column [31]. This also depicts the amount of putrescible organic matter degradable by microbial metabolism on the assumption that the water has no bactericidal or bacteriostatic effects [32].

Dissolved Oxygen

DO have a range of 3.19 to 4.80mg/L. This value for some station and months such as February to April were within the [23] permissible limit of 4 mg/L. May to July exhibited a DO value higher than 4 mg/l. It has been recommended that a minimum of 4 mg/l of dissolved oxygen should be maintained in water for healthy growth of fish and other planktonic populations. The values Dissolved Oxygen (DO) recorded during the study could be due to the high transparency allowing for sufficient sunlight penetration causing an increase in photosynthetic activity within the aquatic system. Similar findings were reported by [33] in upper Ogun River. And the water quality is deteriorating towards downstream stretches of the months especially in the raining season where the population density is very high with respect to parameters like turbidity, chlorides, iron and cadmium are high when compared to the [23] Standards.

Turbidity

Turbidity measurements in water are a key test of water quality as high turbidity in water may indicate ineffectiveness in filtration [19]. Values varied from 5.41 to 5.98 NTU and the month of July exhibited the highest value of 6.76 while the month of April recorded the least 4.63. These values were found to be higher than the acceptable value of [17] (5NTU). The higher values of turbidity in the month of April agrees with the findings of [34] who reported that during this season, the higher level of turbidity could be caused by sewage matter in water which could lead

to the rise in pathogenic organisms which could be shielded by the turbidity particles and hence flee the action of the disinfectant [7] and [1].

Nitrate

The Nitrate concentration ranges from 8.78 - 10.02 mg/L, although the mean values were lowest in April (4.06) and highest in February 7.83. The level of nitrate in water could be due to anthropogenic activities taking place at the abattoir. This agrees with [35] who reported that Nitrates have a high potential to migrate to ground water since they are very soluble and do not bind to soil. [36] reported values ranging between 9.30 - 68.0 which are higher from surface water pollution around Gboko abattoir. It is reported that nitrate concentration above the permissible value by 45 mg/L is dangerous and poses a serious health threat to infants less than three to six months of age because of its ability to cause methemoglobinemia [37].

Hardness

The total hardness is indicative of the calcium and magnesium concentrations and expressed as mg/l CaCO [38]. The highest total hardness value 31.77mg/l was at station 1 recorded in May and the lowest value of 33.98 mg/l was at station 2 recorded in March. In the present investigation, hardness is found to vary from 31.77 mg/l to 33.98 mg/l. The higher hardness values were within the potable limit of 500 mg/l prescribed by [23]. This agrees with [39] who reported that similar value of total hardness at different sample stations may be attributed to discharges from the domestic wastes through drains and wash off from the neighboring abattoir effluents. The level of hardness reported in the study may also be attributed to the presence of dissolved calcium and magnesium at different levels [40].

Chloride

The value of chloride in this study varies between 20.16 to 33.66 with the highest values in the month of May at station 3 and the least in March at station 1. This agrees with [41]. Who reported that the natural levels of chlorides in rivers and other fresh water sources are usually in the range of 15 to 35 mg/l, which is much below drinking water standards [21] (EPA, 2001 and [23]. The chloride value across the three stations increased across the months which may be due to salt water ingress and sewage discharges. These findings suggested contamination of the water bodies which could be due to the unscientific disposal of heavily contaminated waste products originating from the abattoir through sewage channels [42]. Since abattoir and sewages are a rich source of chloride, the level of high chloride values may indicate a progressive increase in pollution of water. As reported earlier, in coastal areas, elevated chloride values may be due to sea spray or sea water infiltration and not necessarily due to discharges alone [21].

Phosphate

The mean concentration of phosphate in the study area range between 0.31-0.51 which is below the WHO/USEPA limits of 5mg/L for the discharged of wastewater into river. The levels of phosphate observed in this study can cause eutrophication and may pose a problem if discharged into river or stream [43]. The slightly high concentration of Phosphate may be from other sources such as detergents used by the abattoir workers to wash roasted slaughtered animals [6], laundry activities of surrounding residents and run-off of house hold effluents into the river [44].

Sulphate

Sulphates exist in all natural waters and their concentrations vary according to the nature of the terrain through which they flow. They are often derived from the sulphides of heavy metals (iron, nickel, copper and lead). The concentration of sulphate in the present study varied from 13.27 to 16.60mg/l which is lower than the maximum permissible limit of 250 mg/L set by [23].

Sulphates have been categorized under secondary drinking water standards of [45] as it affects the taste and have laxative effects. Sulphides are present in sedimentary rocks from which they can be oxidized to sulphate in humid climates; the latter may then leach into watercourses so that ground waters are often excessively high in sulphates [21].

CONCLUSION

From this study it is evident that the quality of the waters along the course of Ilo-abuchi creek sampled were not significantly adversely affected, as most of the physicochemical parameters were within the acceptable limits prescribed by EPA. Examples of some of the observed alterations of some parameters from the ideal standards set by the relevant Authorities because of effluents discharges from the abattoir and saw-mill industries mainly include TSD and turbidity, which were slightly above the WHO standards. The alteration in water quality were more pronounced in the wet season (May, June and July) compared to the dry season (February and March and April). The levels of parameters downstream were significantly more elevated than the corresponding levels upstream. This trend of progressively elevated levels of studied parameters downstream can be attributed to accumulated concentrations of the polluting wastes from the sawmills and other associated anthropogenic waste generating activities in the downstream area where the water flow velocity is very low. Generally, the study results are indicative that the Ilo-abuchi creek is constantly inundated with pollutants mainly from the saw-mill industrial effluents. It is obvious that the effluents discharged into the creek are not in any way treated to prescribed standards by regulatory body, as they are directly dumped in the water.

RECOMMENDATIONS

The values of the physicochemical parameters of the Ilo-abuchi creek waters within and around the study area reflects implies the activities of the sawmills and it's other associated waste

generating ventures might have contributed significantly to the reported values which may lead to increased pollution on the surface water in the area. This trend if left unchecked constitutes a potential source of full-blown environmental problems in the near future. Regular monitoring of the physicochemical properties of the Creek is therefore application of recommended actions to reverse the adverse effects of human activities on the water quality and subsequent conservation and protection of the organisms habiting it. It is pertinent therefore, that the relevant concerned environmental regulatory bodies like NOSDRA, NESREA and States/Federal Ministry of Environment needs to device mechanisms to enforce existing environmental laws concerning the discharge of effluents from different sources. Such efforts will go a long way in ensuring an appreciable reduction in contamination of surface waters and ensure their suitability for domestic and industrial utilization within Nigeria.

REFERENCES

1. FAO (1991). African fisheries and the Environment FAO Regional Office, Accra, RAFR/91/02, Accra, Ghana 26pp.
2. Arimoro, F.O., M.A. Chukwudi and O. Ogheneghalome, 2007. Effect of industrial waste water on the physical and chemical characteristics of a tropical coastal river. Res. J. En. Sci., 2: 209-220.
3. Davies, I. C., Agarin, O. J., and Onoja C. R. (2021). Study On Heavy Metals Levels and Some Physicochemical Parameters of a Polluted Creek Along the Tin Can Island in Lagos. *International Journal of Environment and Pollution Research*.9(2), 25-39.
4. Arimoro, F. O., Ikomi, R. B., & Osalor, E. C. (2007). The impact of sawmill wood wastes on the water quality and fish communities of Benin River, Niger Delta Area, Nigeria. *International Journal of Science and Technology*, 2(1), 1-12.

5. Chinyere, G. C., Obisike, E. S., Ugbogu, A. E., & Osuocha, K. U. (2013). Studies on municipal solid wastes dumping on soil anions, cations and selected enzymes activities at Njoku sawmill waste dumpsite, Owerri Municipal, Imo State, Nigeria. *Ethiopian Journal of Environmental Studies & Management*, 6.
6. Adeogun, A. O., Ibor, O. R., & Chukwuka, A. V. (2013). Acute toxicity of abattoir and sawmill effluents to juvenile-sized *Clarias gariepinus*. *Zoology and Ecology*, 23(1), 53-57.
7. Davies, I. C. and Okonkwo, S. E. (2021). Analyses of Some Heavy Metal and Nutrients of Water Samples from Ajegunle Creek in Lagos. *International Journal of Environment and Pollution Research*. Vol.9, No.1 pp.7-26.
8. Obasi, H. C., Mark, U. C., Madufor, I. C., & Mark, U. (2021). Biochar Filled Polypropylene Composites with Excellent Properties: Towards Maximizing the Utilization of Agricultural Wastes.
9. Magaji, J.Y. and Chup, C.D. (2012). The Effects of Abattoir Waste on Water Quality in Gwagwalada-Abuja, Nigeria. *Ethiopian Journal of Environmental Studies and Management*, 5(4).
10. Elemile, O.O., Raphae, O.R., Omole, D.O., Oloruntoba, E.O. and Ohwavboru, N.A. (2019). Assessment of the impact of abattoir effluent on the quality of groundwater in a residential area of Omu-Aran, Nigeria. *Environmental Science of European journal* .31:16.
11. Adetunde, L. A., Diedong, P. and Ninkuu, V. (2019). Effect of abattoir wastes on stream quality in the Bolgatanga municipality, Ghana-west Africa. *African Journal of Microbiolog Research*. 13(28), pp. 531-537.
12. El Hajam, M., Plavan, G. I., Kandri, N. I., Dumitru, G., Nicoara, M. N., Zerouale, A., & Faggio, C. (2020). Evaluation of softwood and hardwood sawmill wastes impact on the

- common carp" *Cyprinus carpio*" and its aquatic environment: An oxidative stress study. *Environmental toxicology and pharmacology*, 75, 103327.
13. Oyem, H. H., Oyem, I. M., & Ezeweali, D. (2014). Temperature, pH, electrical conductivity, total dissolved solids and chemical oxygen demand of groundwater in Boji-BojiAgbor/Owa area and immediate suburbs. *Research Journal of Environmental Sciences*, 8(8), 444.
 14. APHA, 2005. Standard methods for the examination of water and waste water (21st ed.), Washington, D.C: American Public Health Association.
 15. Duncan, D. B. (1955). Multiple range and multiple F tests. *Biometrics*, 11, 142.
 16. Agarin, O.J., Davies I.C., and Oyema, I.C. (2019). Evaluation of some physicochemical parameters of the Tin Can Island Creek, Lagos, Nigeria, *Nigerian Journal of Fisheries*, 16 (2):1783-1793.
 17. World Health Organization (2011). Guidelines for drinking-water quality. *WHO chronicle*, 38(4), 104-108.
 18. Okere, M. C., Davies, I. C., Onyena, A. P. (2021). Variation of The Physicochemical Parameters, Nutrients and Some Selected Heavy Metals Around the Waters of the Tincan Island in Lagos, Nigeria. *British Journal of Environmental Sciences*,9(4), 1-17.
 19. Faremi, O. E., Sogbanmu, T. O., & Adeyemo, O. K. (2021). How sawmill wastes impact surface water, sediment, macrobenthic invertebrates, and fish: a case study of the Lagos lagoon, Okobaba Area, South-western Nigeria. *Environmental Monitoring and Assessment*, 193(4), 1-13.
 20. Hussain, J., Sharma, K. C., Hussain, I., Ojha, K. G., & Vaidya, V. K. (2001). Physico Chemical Characteristics of Water from Bore Wells of an Industrial Town Bhilwara Rajsthan: A Correlation Study. *Asian Journal of Chemistry*, 13(2), 509.

21. Adewuyi, T. A. (2019). Stakeholders' Perception of Fish Decline in the Lagos Lagoon and Effects of Sawmilling Activities on Water Quality and *Clarias gariepinus* Embryos. *Agricultural Extension Journal*, 3(4), 200-213.
22. Hart AI. and Zabbey N (2005) Physicochemical and benthic fauna of Woji Creek in the Lower Niger Delta, Nigeria *Environmental. Ecology* 23: 361-368.
23. WHO., 2006. Guidelines for drinking-water quality (electronic resource). Incorporating first addendum - 3rd ed. Volume 1. Recommendations. World Health Organization, Geneva.
24. Spence, J. E. (2017). *The drying of abattoir paunch for waste-to-energy conversion* (Doctoral dissertation, University of Southern Queensland).
25. Dawodu, F. A., & Ajanaku, K. O. (2008). Evaluation of the effects of Brewery Effluents disposal on public water bodies in Nigeria. *Aqua Environmental Toxicology*, 31, 25-29.
26. Nwanta, J. A., Onunkwo, J. I., Ezenduka, V. E., Phil-Eze, P. O., & Egege, S. C. (2008). Abattoir operations and waste management in Nigeria: A review of challenges and prospects. *Sokoto Journal of Veterinary Sciences*, 7(2).
27. Shehu-Alimi, E., Esosa, I., Ganiyu, B. A., Olanrewaju, S., & Daniel, O. (2020). Physicochemical and Heavy Metals Characteristics of Soil from Three Major Dumpsites in Ilorin Metropolis, North Central Nigeria. *Journal of Applied Sciences and Environmental Management*, 24(5), 767-771.
28. Lawson, E. O. (2011). Physico-chemical parameters and heavy metal contents of water from the Mangrove Swamps of Lagos Lagoon, Lagos, Nigeria. *Advances in biological research*, 5(1), 8-21.

29. Ogbonna, D. N., & Ideriah, T. J. K. (2014). Effect of Abattoir Waste Water on Physico-chemical Characteristics of Soil and Sediment in Southern Nigeria. *Journal of Scientific Research and Reports*, 3(12), 1612-1632.
30. Adesina, A. O., Ogunyebi, A. L., Fingesi, T. S., & Oludoye, O. O. (2018). Assessment of Kara abattoir effluent on the water quality of Ogun River, Nigeria. *Journal of Applied Sciences and Environmental Management*, 22(9), 1461-1466.
31. Oguntoke, O., Emoruwa, F. O., & Taiwo, M. A. (2019). Assessment of air pollution and health hazard associated with sawmill and municipal waste burning in Abeokuta Metropolis, Nigeria. *Environmental Science and Pollution Research*, 26(32), 32708-32722.
32. Rice, E. W., Baird, R. B., Eaton, A. D., & Clesceri, L. S. (2012). American Public Health Association (APHA), standard methods for the examination of water and wastewater, American Water Works Association (AWWA) and Water Environment Federation (WEF).
33. Adeogun, A. O., Chukwuka, A. V., & Ibor, O. R. (2011). Impact of abattoir and saw-mill effluents on water quality of upper Ogun River (Abeokuta). *American Journal of Environmental Sciences*, 7(6), 525.
34. Yakasai, H. M., & Atiku, M. K. (2010). Study on Physicochemical Characteristics of Industrial Effluents from Bompai industrial areas, Kano Metropolis. *Best Journal*, 7(3), 81-86.
35. Korostynska, O., Mason, A., & Al-Shamma'a, A. (2012). Monitoring of nitrates and phosphates in wastewater: current technologies and further challenges. *International journal on smart sensing and intelligent systems*, 5(1).

36. Ubwa, S. T., G. H. Atoo, J. O. Offem, J. Abah, and K. Asemave. "An assessment of surface water pollution status around Gboko abattoir." *African Journal of Pure and Applied Chemistry* 7, no. 3 (2013): 131-138.
37. Sadeq, M., Moe, C. L., Attarassi, B., Cherkaoui, I., ElAouad, R., & Idrissi, L. (2008). Drinking water nitrate and prevalence of methemoglobinemia among infants and children aged 1–7 years in Moroccan areas. *International journal of hygiene and environmental health*, 211(5-6), 546-554.
38. Patil, P. N., Sawant, D. V., & Deshmukh, R. N. (2012). Physico-chemical parameters for testing of water-a review. *International journal of environmental sciences*, 3(3), 1194.
39. Chowdhury, S., Mishra, M., & Suganya, O. M. (2015). The incorporation of wood waste ash as a partial cement replacement material for making structural grade concrete: An overview. *Ain Shams Engineering Journal*, 6(2), 429-437.
40. Adugna, F., Pal, M., & Girmay, G. (2018). Prevalence and antibiogram assessment of *Staphylococcus aureus* in beef at municipal abattoir and butcher shops in Addis Ababa, Ethiopia. *BioMed Research International*, 2018.
41. Olawuyi, K.A., Enitan, S.S., Akele, R.A., Junaid,S. and, Ileoma. E. (2020) A review on the state of abattoirs in Nigeria during COVID-19 pandemic era: Potential threats and public health interventions. *Journal of Public Health and Diseases* 3(6), pp 105-118.
42. Andem, A. B., Okorafor, K. A., & Ekpenyong, E. N. (2015). Impact of Saw-mill Wood Wastes and Agrochemicals on Population Structure of Benthic Macroinvertebrates of Afi River, Southern Nigeria. *Journal of Biospesticides and Environment*, 1(2), 26-34.

43. Nasiru, A., Osakwe, C. E., Lawal, I. M., & Chinade, A. U. (2016). Assessment of physicochemical parameters and heavy metals in Gombe abattoir wastewater. *Am. J Eng. Res*, 5, 64-69
44. Froehner, S., Souza, D. B., Machado, K. S., & Da Rosa, E. C. (2010). Tracking anthropogenic inputs in Barigui River, Brazil using biomarkers. *Water, Air, & Soil Pollution*, 210(1), 33-41.
45. United States. Environmental Protection Agency. Office of Pesticide Programs. (2000). *Assigning values to non-detected/non-quantified pesticide residues in human health food exposure assessments*. Office of Pesticide Programs, US Environmental Protection Agency.