

Original Research Article

EFFECT OF ADDITIONAL FISH HERBAL CONCENTRATIONS WITH DIFFERENT CONCENTRATIONS ON FEED ON GROWTH AND SURVIVAL OF RED TILAPIA (*Oreochromis niloticus*) JUVENILES

ABSTRACT

This study aimed to analyze and determine the concentration of fish herbs that were optimal for the growth and survival rate of red tilapia juveniles. The study method used was the experimental Complete Random Design (CRD) with 5 treatments and 3 replications. The treatment applied was A (control), B (concentration of fish herbs 25 ml Kg⁻¹), C (concentration of fish herbs 50 ml Kg⁻¹), D (concentration of fish herbs 75 ml Kg⁻¹), E (concentration of fish herbs 100 ml Kg⁻¹). Observed parameters were Specific Growth Rate (SGR), Feed Conversion Ratio (FCR), Protein Efficiency Ratio (PER), Survival Rate, and Water Quality. The results showed that highest SGR value were on treatment C (0,86%), treatment B (0,73%), treatment A (0,69%), Treatment D (0,68%), Treatment E (0,60%). The lowest FCR values were at treatment C (1,34), treatment B (1,56), treatment D (1,72), treatment A (1,79), treatment E (1,93). The highest PER value was on treatment C (0,54), treatment B (0,52), treatment D (0,44), treatment E (0,32). The optimum concentration of fish herbs for the growth of red tilapia is treatment with the concentration of fish herbs 50 ml Kg⁻¹

Keywords: Red Tilapia, Herbs, Growth, FCR, SGR, PER

1. INTRODUCTION

Red tilapia which is currently widely developed in Indonesia is a tetrahibri tilapia which is the result of crossing four different species of the *Oreochromis* genus, namely *Oreochromis mossambicus*, *Oreochromis niloticus* (tilapia), *Oreochromis hornorum*, and *Oreochromis aureus* [1]. Red tilapia (*Oreochromis niloticus*) is one of the most popular inland fishery products because it has a shape that almost resembles red snapper, and the taste of the meat is not much different from that of red snapper.

[2] stated that feed is one component that reaches 60-70% of the total production cost and is one of the determinants of the success of aquaculture, so it needs effective and efficient management. Feed quality is one of the main factors in determining the success rate of cultivation. If the quality of fish feed, the growth of fish will increase so that aquaculture production will also increase. To improve the quality of the feed, one way that can be done is by adding fish herbs to the feed.

Fish herbs are plant-based supplements that are beneficial for organisms that consume them. This study used herbal supplements, namely turmeric, ginger, temulawak, kencur, noni, ketapang leaves, betel leaves and stems, molasses and yeast. The use of yeast (*Saccharomyces cereviceae*) in herbal medicine has a good impact on fish growth, because the nucleotide content in yeast can quickly repair intestinal damage and increase the flora of the intestinal mucosa [3]. Some of the other benefits obtained by giving herbal supplements include increasing the body's resistance to disease, launching the digestive system, saving on the use of feed, increasing fish appetite [4].

2. MATERIAL AND METHODS

2.1 Time and Place

The research was carried out from November to December 2020 at the Ciparanje Wet Laboratory and Experimental Pond, Faculty of Fisheries and Marine Sciences, Padjadjaran University.

2.2 Materials and Tools

2.2.1 Materials

The materials used in this research activity are as follows:

1. Juveniles of red tilapia as test fish were obtained from the stock of red tilapia at the Ciparanje Wet Laboratory and Experimental Pond, Faculty of Fisheries and Marine Sciences, Padjadjaran University. The fish used was 5-7 cm with a weight range of 4.00 – 5.00 g as many as 300 fish.
2. Commercial pellets PF¹000 Prima Feed "Matahari Sakti" with a protein content of 40% as a test fish feed.
3. Fish Herb

2.2.2 Tools

The tools used in this research are as follows:

1. Aquarium measuring 60×29.5×35.5 cm³ as many as 15 pieces as a container for rearing test fish
2. I-2000 digital scale with an accuracy of 0.01 mg totaling 1 piece to measure the weight of fish and feed.
3. Millimeter block for measuring fish body length
4. Each aeration hose and aeration stones are 15 pieces as oxygen supply in each aquarium
5. A Blender to smooth the ingredients for fish herbs.
6. A syringe (Syringe) with a volume of 5 ml for applying fish herbs to the feed.
7. Plastic zip lock as a feed storage container
8. DO meter to measure the dissolved oxygen content
9. pH meter to measure the acidity of the maintenance media water
10. Ammonia test kit to measure the value of ammonia in maintenance media
11. Thermometer for measuring the temperature of the maintenance medium
12. Stationery to record the results of observations and measurements
13. Documentation tool to document activities during research

2.3 Methods

This study used five levels of treatment with three replications. The treatment that was tested was the difference in concentration of the mixture of fish herbs in commercial feed. The treatments tested in this study were:

1. Treatment A = Control (without mixing)
2. Treatment B = 25 ml kg⁻¹ feed
3. Treatment C = 50 ml kg⁻¹ feed
4. Treatment D = 75 ml kg⁻¹ feed
5. Treatment E = 100 ml kg⁻¹ feed

Mixing of fish herbs in the feed was carried out by dilution using water and sprayed on the feed using a syringe, then left for 12 hours at room temperature.

2.4 Research Procedure

2.4.1 Container Preparation

The container used is an aquarium measuring 60 x 29.5 x 35.5 cm³. Preparation of the container begins with cleaning the aquarium of dirt or crust attached to the walls and bottom using soap. After the aquarium is clean, check for leaks and then dry in the sun. Furthermore, the tub and aquarium were disinfected using a solution of Potassium Permanganate (PK) for about 24 hours, then filled with water with a volume of 40 liters and given sufficient aeration. The aquarium can be used after one day of water filling.

2.4.2 Pemeliharaan Ikan Uji

The test fish used were tilapia with a length of about 5 - 6 cm and a weight between 2.85 - 3.00 g as many as 20 fish in one container. The test tilapia was obtained from tilapia stock in the Ciparanje Wet Laboratory and Experimental Pond. After acclimatization, the tilapia were stocked in the aquarium. Furthermore, tilapia are reared by feeding every day in the form of commercial feed which has been treated as much as 3% of body weight with a frequency of feeding twice a day, morning at 08.00 and afternoon at 16.00..

2.4.3 Making Fish Herb

The composition in making this herbal supplement is 1 kg of turmeric, 1 kg of ginger, 1 kg of ginger, 1 kg of *kencur*, 1 kg of noni, 30 pieces of dried *ketapang* leaves, 250 g of betel leaf and stalk, 14 g of yeast (*Saccharomyces cereviceae*), 1 liter of molasses, and 1000 ml of water. The turmeric, *kencur*, *temulawak*, noni, ginger, and *ketapang* leaves are mashed then transferred to a 30 liter capacity container and added molasses and yeast a little by little while stirring until evenly distributed and slowly adding 30 liters of water while stirring until evenly distributed. After that, the solution is then put into a jerry can and tightly closed. Storage time is done for 10 days. This is so that the yeast (*Saccharomyces cereviceae*) breeds. The lid of the container is opened once or twice a day to release the fermented gas, then closed and stored again [4]. On the 11th day, this herbal supplement can be used to ferment the feed that will be given to tilapia.

2.4.4 Feed Preparation

Fish herbs that have been prepared previously, mixed with water as a solvent in a ratio of 50 ml of fish herbs + 300 ml of water for 1 Kg of feed. As for the mixing according to the treatment, the amount of the fish herbal mixture was adjusted according to the treatment

given. The application of the herbal solution to the feed was carried out with a syringe and sprayed evenly, then allowed to stand for 12 hours at room temperature. Feed ready to use.

2.5 Research Method

2.5.1 Red Tilapia Juveniles Growth

2.5.1.1 SGR (Specific Growth Rate)

The daily specific growth rate is calculated based on the formula according to [5] namely:

$$SGR = \frac{\ln(W_t) - \ln(W_0)}{T} \times 100\%$$

Description:

SGR = Daily growth rate (% day⁻¹)

W_t = Weight of test animals at the end of the study (g)

W₀ = Weight of test animals at the beginning of the study (g)

T = Length of study (days)

2.5.1.2 FCR (Feed Conversion Ratio)

Feed conversion is calculated by the following formula according to [6]:

$$FCR = \frac{F}{(W_t + D) - W_0}$$

Description:

FCR = Feed Conversion Ratio.

W₀ = Weight of test animals at the beginning of the study (g)

W_t = Weight of test animals at the end of the study (g)

D = Number of dead fish

F = Amount of feed consumed (g)

2.5.1.3 PER (Protein Efficiency Ratio)

Calculation of Protein Efficiency Ratio is carried out to determine the level of utilization of protein in the feed by fish. PER calculation uses the following formula [7]:

$$PER = \frac{W_t - W_0}{P_i}$$

Description:

PER = Protein Efficiency Ratio (%)

W_t = Biomass of test fish at the end of the study (g)

W₀ = Biomass of test fish at the beginning of the study (g)

P_i = Weight of protein consumed, derived from protein content in feed (g)

2.5.1.4 SR (Survival Ratio)

The percentage of survival rate of the test fish can be calculated using the formula according to [8], namely:

$$PER = \frac{N_t}{N_0} \times 100\%$$

Description:

SR = Survival Rate of Test Fish (%)

Nt = Number of live fish at the end of the study

No = Number of Living Fish at the Beginning of the Study

2.5.2 Water Parameters

The water quality data parameters measured are as follows:

Table 1. Observed water quality

No	Parameter	Unit	Measuring instrument
1	Temperature	°C	Thermometer
2	Dissolved Oxygen	mgL ⁻¹	DO Meter
3	pH	-	pH Meter
4	Ammonia	mgL ⁻¹	Ammonia test kit

2.6 Data Analysis

Data in the form of percentages include survival rates and daily growth rates. The data obtained in the form of an increase in length and weight were then analyzed for variance (F test) at the 95% confidence level to see the effect. If the analysis of variance obtained a significant difference ($P < 0.05\%$) then Duncan's multiple area tests was conducted to determine the differences between treatments. To estimate the optimal concentration of fish herbs mixing in the feed, manual analysis was performed using Microsoft Excel. Data on water quality and feed characteristics were analyzed descriptively.

3. RESULTS AND DISCUSSION

3.1 Specific Growth Rate (SGR)

The results of observations on increasing red tilapia juveniles weight in each treatment for 42 days of rearing showed that the addition of fish herbs to feed with different concentrations gave different effects on the growth of red tilapia juveniles. An increase in the average growth from the first observation to the sixth observation in each treatment indicated that the feed provided was able to be eaten and utilized by fish juveniles. The increase in the average weight of red tilapia juveniles during the rearing period can be seen in Figure 1.

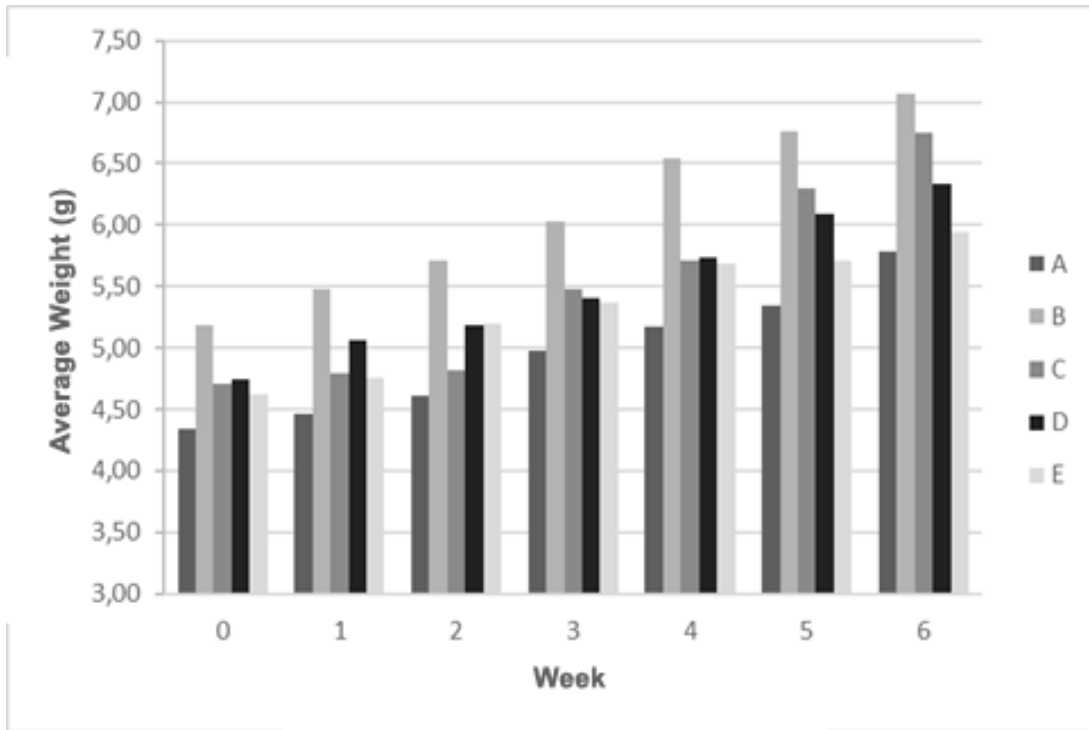


Fig. 1. Increase in the average weight of red tilapia juveniles

Based on Figure 3, it can be seen that during the 42-day maintenance period, each treatment showed a different increase in average weight. The average initial weight of red tilapia juveniles was 4.34 g – 5.19 g and at the last observation, fish juveniles weight reached 5.79 g – 7.07 g. The highest increase in the average value of growth was in treatment B with an average final weight of 7.07 g.

The average yield of red tilapia juveniles growth during the study was then continued with the calculation of the SGR (Specific Growth Rate). The SGR value for each treatment can be seen in Figure 2.

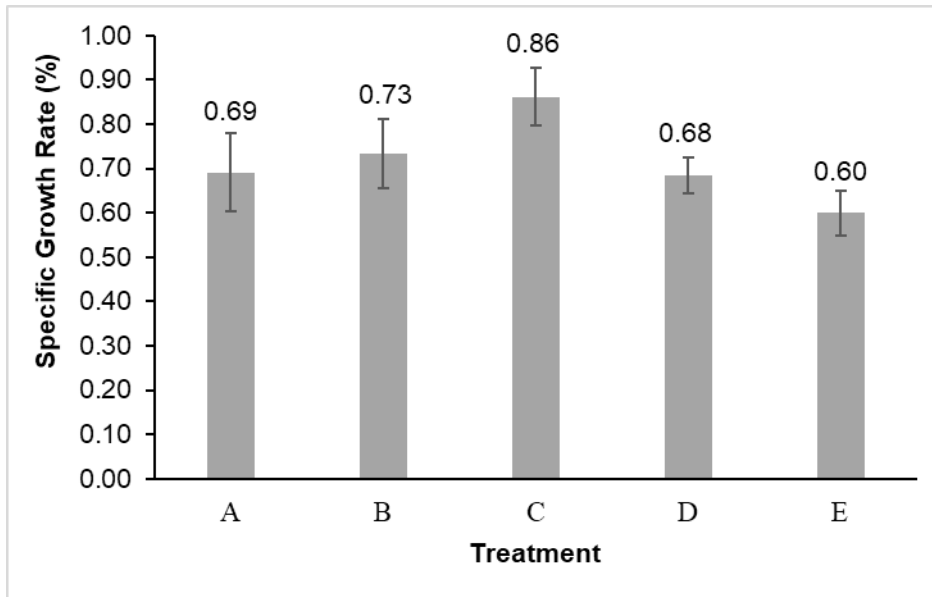


Fig. 2. SGR Value of Each Treatment A (Control), B (25 ml Kg⁻¹ feed), C (50 ml Kg⁻¹ feed), D (75 ml Kg⁻¹ feed), E (100 ml Kg⁻¹ feed)

The SGR value of each treatment, namely, A (control) was 0.69%, treatment B (25 ml Kg⁻¹ feed) was 0.73%, treatment C (50 ml Kg⁻¹ feed) was 0.86%, treatment D (75 ml Kg⁻¹ feed) was 0.68% and treatment E (100 ml Kg⁻¹ feed) was 0.60%. The SGR value was then analyzed using a variance table and showed a significantly different effect on each treatment (so it was continued with Duncan's multiple distance test. Based on the results of Duncan's multiple distance test at 95% confidence level, treatment C (50 ml Kg⁻¹ feed) resulted in the highest SGR value and was significantly different from other treatments.

The SGR value obtained showed that the administration of fish herbs in the feed had a good effect on the growth of red tilapia fish and reached an optimal concentration at a mixing concentration of 50 ml Kg⁻¹ of feed. This can happen because of the various active substances present in fish herbs that can improve the quality and digestibility of feed.

The SGR value in Figure 2 in treatment A to treatment C shows an increase. This indicates that the active substance content in the fish herbal medicine was responded well by the fish up to a concentration of 50 ml Kg⁻¹ of feed. Meanwhile, in treatment D and treatment E, there was a decrease in the SGR value. This could be due to a change in the characteristics of the feed as a result of the addition of fish herbs, such as clumping of feed that occurred in treatment E (100 ml Kg⁻¹ feed). The feed clumps because the large amounts of fish herbs make the feed wetter so it can soften and make the feed stick to each other. This causes the feed to be difficult for fish to consume and tends to be on the edge of the rearing container. In addition to the characteristics of the feed, the aroma of pellets at a concentration of 75 ml Kg⁻¹ of feed and a concentration of 100 ml Kg⁻¹ of feed began to decrease, the aroma of fish herbs began to decrease. the aroma of feed, because the aroma can stimulate the appetite of fish.

The content of curcumin in fish herbs affects the activity of digestive enzymes, such as lipase enzymes, protease enzymes, and amylase enzymes. Based on research [10], it is known that the curcumin content of 0.05% and 0.1% in carp feed causes a decrease in the enzyme value, this is thought to be due to the presence of inhibitors in the feed that affect

digestive enzymes and the alkaline nature of the intestine which is thought to not support digestive enzyme activities. However, the addition of 3% curcumin to the sand goby (*Oxyeleotris marmoratus*) feed showed an increase in the enzyme value. This shows that curcumin has a good effect on digestive activity in a certain amount. According to [11], giving curcumin extract to feed can increase the digestibility of food substances in the digestive tract, because curcumin can stimulate the gallbladder wall to secrete bile and essential oils to prevent excessive gastric acid from being released. Bile contains several salts as a result of mixing sodium and potassium.

The SGR value which tends to increase up to treatment C (50 ml Kg⁻¹ Feed) is thought to be because essential oils and curcumin have the property of stimulating liver cells to increase bile production and facilitate bile secretion/expenditure so that bile fluid increases. This will reduce the solid particles contained in the gallbladder. Bile functions to dissolve fat, with the smooth secretion of bile can reduce cholesterol levels and digestion and absorption of fat go smoothly. The essential oil and curcumin in herbal fish affect the performance of the pancreas in secreting amylase, lipase, and protease enzymes that can improve the digestion of carbohydrates, fats and proteins and increase appetite because they can accelerate gastric emptying, thereby creating hunger and stimulating appetite and increasing appetite. feed palatability [12].

Anti-microbial content in fish herbs such as flavonoids plays a role in eliminating negative microbes in the fish digestive tract. Research [13] showed that the addition of meniran flour containing flavonoids to feed was able to increase the number of LAB (Lactic Acid Bacteria) and reduce the number of *Escherichia coli* bacteria in the digestive tract. In general, the composition of microbes in the digestive tract is non-pathogenic microbes (*Lactobacillus* sp., *Pseudomonas* sp.) and pathogenic bacteria (*Escherichia coli*).

The content of anthraquinone in herbal fish derived from noni can affect the pH of the digestive tract to be more acidic. According to [14], in an acidic environment, protein-breaking enzymes can work optimally, so that more feed protein is absorbed by the body which supports optimal growth. Noni fruit produces short chain fatty acids, especially caproic acid, caprylic acid and butyric acid. In addition, in the noni fruit there are also proxeronase enzymes and proxeronine alkaloids, both enzymes can form the active substance xeronine in the body. Proxeronine is a precursor or substance forming xeronine. Xeronine is a substance needed by the fish body to move enzymes, improve the structure and function of body cells [15]. The content of flavonoids, anthraquinones, and terpenes can stimulate glucose uptake in cells, reduce insulin resistance to increase glucose utilization by the body.

3.2 Feed Conversion Rate (FCR)

Based on Figure 3, it is known that the FCR values in each treatment are as follows; Treatment A was 0.75, treatment B was 0.59, treatment C was 0.51, treatment D was 0.66, and treatment E was 0.75. Treatment C produced the lowest FCR value. Based on analysis of variance, it was found that the addition of fish herbs to commercial feed gave a significant difference to the FCR value. The FCR value was then analyzed using Duncan's multiple distance test at a 95% confidence level and the results showed that the best FCR value was in treatment C (50 ml Kg⁻¹ feed).

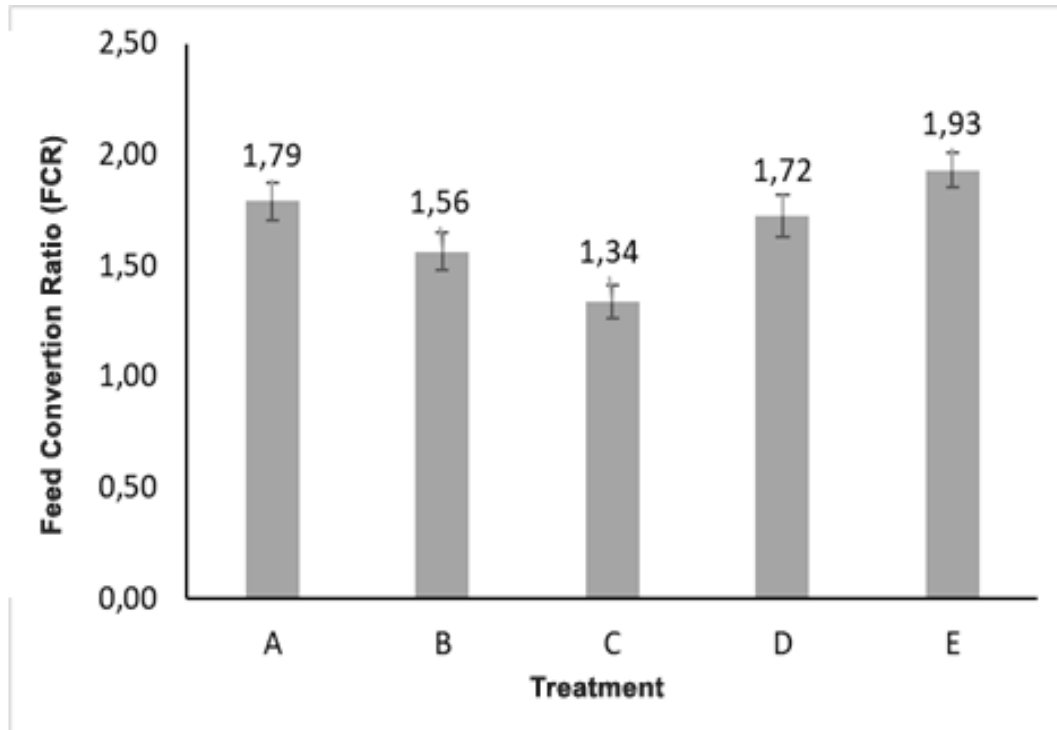


Fig. 3. Nilai FCR pada Masing-masing Perlakuan

The feed conversion value showed a significant difference between each test treatment. The low value of FCR is influenced by the amount of feed, the nutritional content of the feed and the activity of digestive enzymes. The amount of feed used during the study was 3% of the fish biomass with a protein content of 40% and was fed twice a day. Feeding with treatment C (50 ml Kg⁻¹ feed) resulted in the smallest FCR of 1.34, while in treatment E (100 ml Kg⁻¹ of feed) the largest FCR was 1.93. Based on [11], it is known that the administration of probiotics in the first treatment (I) with a dose of 5 ml, the results obtained for the FCR value are 1.82, in the second treatment (II) the administration of probiotics using a dose of 10 ml, the FCR value obtained namely 1.75 and in the third treatment (III) with the administration of probiotics using a dose of 15 ml. This shows that fish herbs can reduce the feed conversion ratio by increasing feed digestibility.

Fish herbs play a role in increasing the digestibility of feed, so that the level of absorption of nutrients by the digestive tract can be more optimum. This can occur because the addition of fish herbs to the feed consumed by red tilapia fish juveniles can increase the activity of digestive enzymes, such as lipase, amylase, and protease enzymes. The increase in enzyme activity is thought to occur due to the active substance curcumin found in fish herbs which can increase the amount of feed consumption. The higher the feed consumed can increase the amount of substrate for enzymes, so that the activity of digestive enzymes increases [17]. In addition to the increase in enzyme activity, the addition of fish herbs also makes the texture of the pellets softer, so that the pellets become easier to digest.

3.3 Protein Efficiency Ratio (PER)

As shown in Figure 4, it is known that the PER value for each treatment is as follows; Treatment A was 0.42, treatment B was 0.52, treatment C was 0.54, treatment D was 0.44

and treatment E was 0.38. Treatment C produced the highest PER value compared to other treatments. Based on analysis of variance, it was found that the addition of fish herbs to commercial feed gave a significant difference to the PER value. The PER value was then analyzed using Duncan's multiple distance test at a 95% confidence level and the results showed that the best FCR value was in treatment C (50 ml Kg⁻¹ feed).

The PER value increased from treatment A to treatment C but decreased in treatment D to treatment E. Optimal protein requirements were influenced by the use of protein for energy, amino acid composition, feed digestibility, and energy-protein balance. To meet protein requirements, during the study, commercial pellets with a protein content of 40% were used. The intake of protein feed in fish must be by the needs of the fish, because if the amount of protein in the feed does not meet the protein needs of the fish, then fish growth will slow down. or repair damaged body cells, while the rest of the protein will be converted into energy [18].

The use of *Saccharomyces cereviceae* in fish medicine aims to convert the cellulose in the fish herbal medicine components into glucose so that the ability of fish to utilize nutrients other than protein as an energy source is increasing. This can happen because *Saccharomyces cereviceae* can produce cellulase enzymes that play a role in the hydrolysis of cellulose into glucose [19] so that the presence of *Saccharomyces cereviceae* in herbal medicine can reduce the crude fiber content in the feed that is added with fish herbal medicine. *Saccharomyces cereviceae* also produces other metabolite products such as; amylase and proteolytic peptidase enzymes [20]

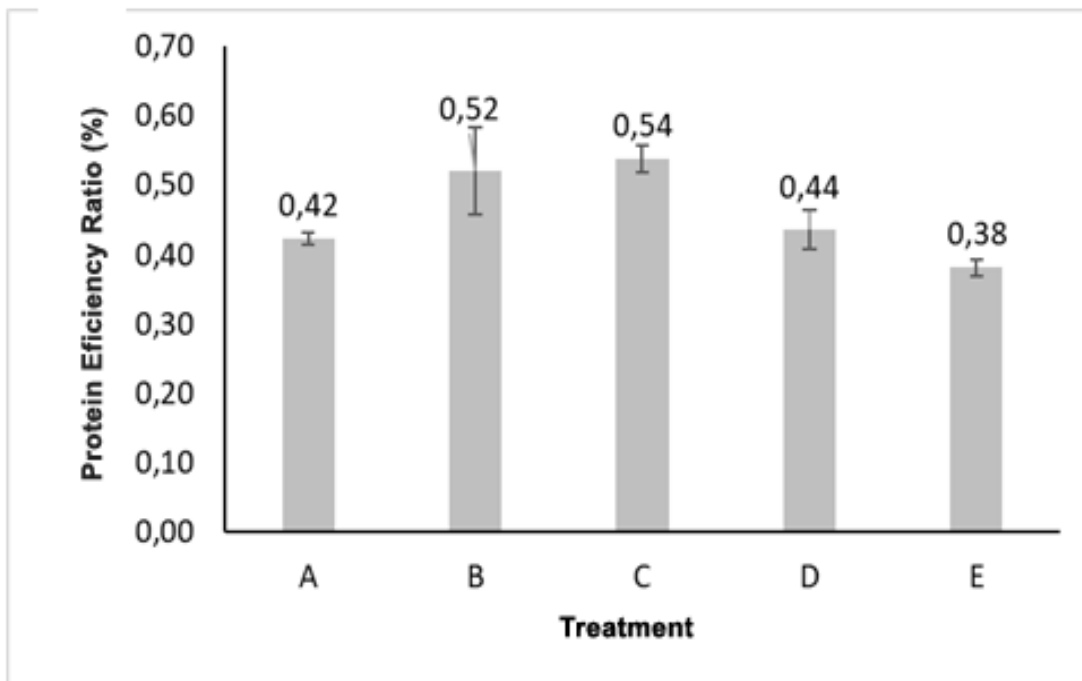


Fig. 4. Value of protein efficiency ratio in each treatment

3.4 Survival Rate (SR)

The survival rate of red tilapia juveniles in each treatment as shown in Figure 5 for 42 days of rearing in each treatment had a survival rate of A (Control) 97.78%, B (25 ml Kg⁻¹ feed) 97.78%, C (50 ml Kg⁻¹ feed) 97.78%, D (75 ml Kg⁻¹ feed) 97.78%, E (100 ml Kg⁻¹ feed) 95.56%, ranging from 95.56 – 97.78%. Based on the analysis of variance, the increase in the concentration of fish herbs in the feed did not have a significant effect on the survival rate ($p>0.05$). Red tilapia juveniles were able to survive even though they showed different growth performances in each treatment.

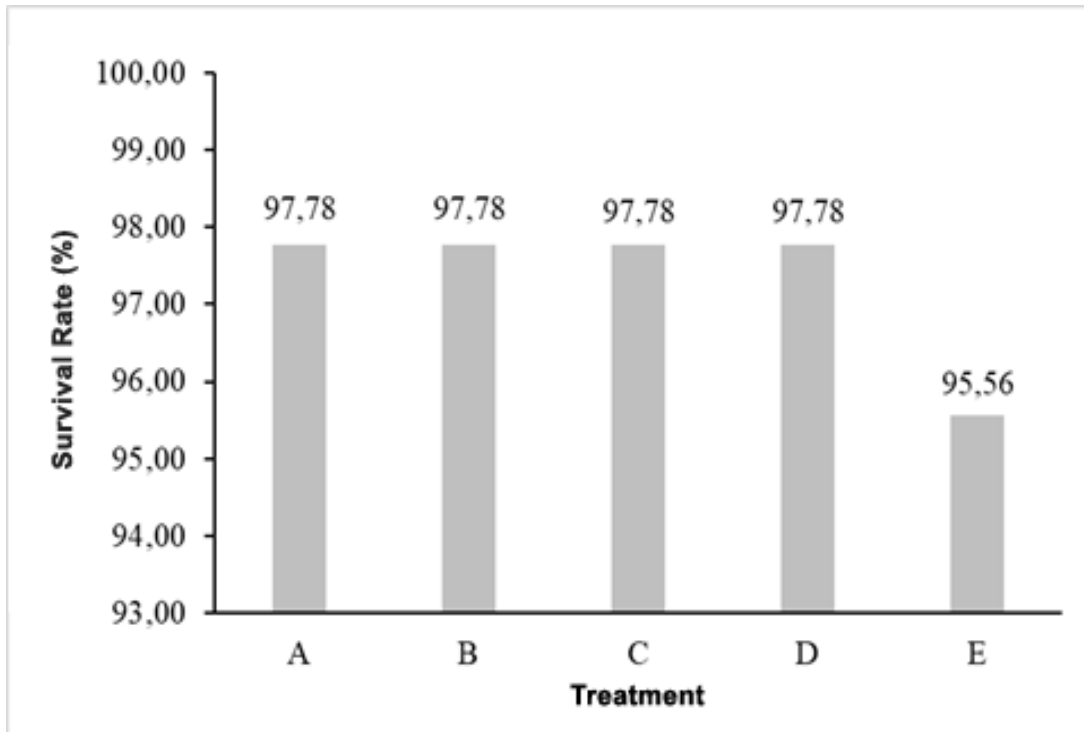


Fig. 5. Survival rate pada masing-masing perlakuan

Survival rates according to [21], there are three categories to describe the survival range, including; $SR > 50\%$ is in a good category, $30\% > SR > 50\%$ is in the middle category, and $SR < 30\%$ is categorized as unfavorable. Based on the survival value during the study, it was found that the survival rate of red tilapia juveniles fed with fish herbal medicine was in the good category

3.5 Water Parameters

3.5.1 Water Temperature

Observations on temperature parameters were carried out twice in one day, namely in the morning at 08.00 (Figure 6) and in the afternoon at 15.00 (Figure 7), the following results were obtained:

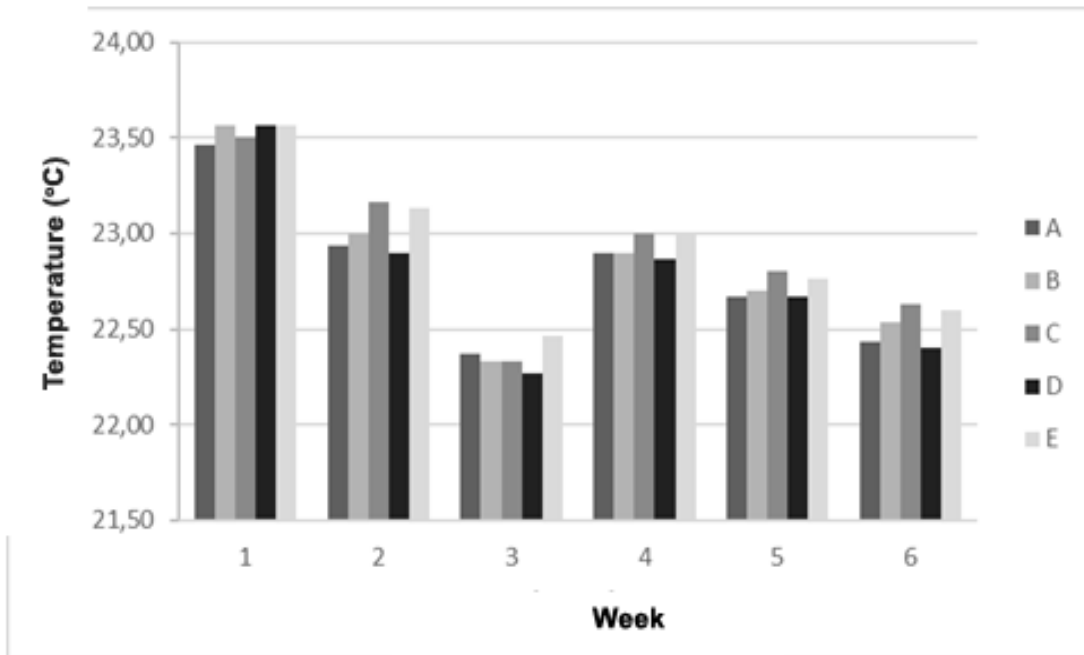


Fig. 6. Results of Measuring Average Temperature in the Morning

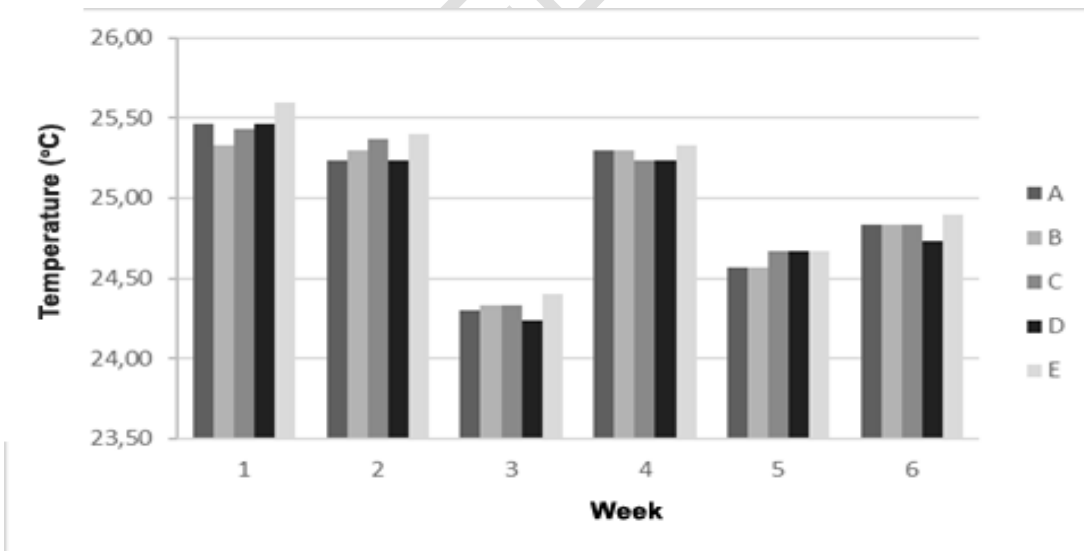


Fig. 7. Results of Measuring Average Temperature in the afternoon

Based on Figure 6, it is known that the lowest temperature in the morning is observed in the third week with an average of 22.26°C and the highest is in the first week with an average of 23.56°C, while the average temperature observed in the morning is 22.84°C.

Based on Figure 7, it is known that the lowest temperature in the afternoon is in the third week of observation with an average of 24.23°C and the highest is in the second week with an average of 25.60°C, while the average temperature of observation in the afternoon is 24.97° C.

Fish are aquatic organisms that are poikilothermic, so the temperature is one of the limiting factors for fish survival. Kelabora and Dominggas (2010) state that water temperatures that are too high or too low can result in most of the energy stored in the fish's body being used for adaptation to a less supportive environment so that it can damage the metabolic system or exchange of substances.

[22] stated that tropical aquatic organisms will grow optimally in a temperature range of 25 - 32°C. The optimal temperature for red tilapia is 18-26°C. Red tilapia can survive at temperatures of 25-33°C [23]. The results of temperature measurements in red tilapia juveniles rearing containers ranged from 22.26°C - 25.60°C. This can be categorized as still in ideal temperature conditions and meets the eligibility criteria for red tilapia

3.5.2 Dissolved Oxygen

As shown in figure 8, it is known that the lowest dissolved oxygen value is 6.63 mgL⁻¹ and the highest is 7.27 mgL⁻¹. The high and low dissolved oxygen content is influenced by the size of the oxygen supply from the blower and the aeration stone used.

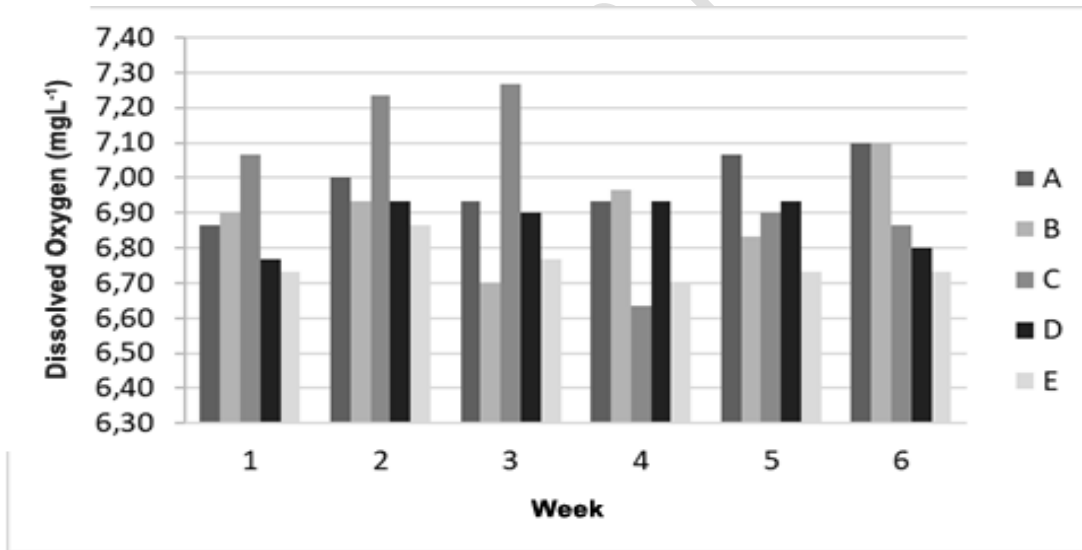


Fig. 8. Measuring Results of Average Dissolved Oxygen

Dissolved oxygen is one of the limiting factors in water. All activities of the biota will be disrupted if the availability of dissolved oxygen is not sufficient for the needs of the aquaculture biota. Low dissolved oxygen levels cause the process of decomposition, reproduction, and growth in the pond not to run well. The minimum value of dissolved oxygen levels for fish farming is 3 ppm [24]. Lack of oxygen will cause fish to lack appetite and the development of bacteria that cause death in fish. Dissolved oxygen content affects the process of oxidation and reduction of organic and inorganic materials [25].

The minimum value of dissolved oxygen levels for fish farming is 3 ppm [24]. The optimal dissolved oxygen content for fish growth is in the range of 5-8 mgL⁻¹. [26]. The dissolved oxygen content in the red tilapia juveniles rearing media is 7.7 mgL⁻¹ – 8.10 mgL⁻¹, based on the results of these measurements, it is known that the dissolved oxygen content in the red tilapia juveniles rearing media is in the optimum value..

3.5.3 pH

As shown in figure 9, it is known that the treatment with the highest pH value was treatment E with an average pH of 7.77 and the lowest was treatment B with an average of 7.33. From the average value of the degree of acidity (pH) in each treatment, it can be concluded that the pH value of the red tilapia juveniles rearing media is still at the appropriate threshold for rearing. This is under with the statement [27] that the optimum pH value for water areas is 6.5-9.

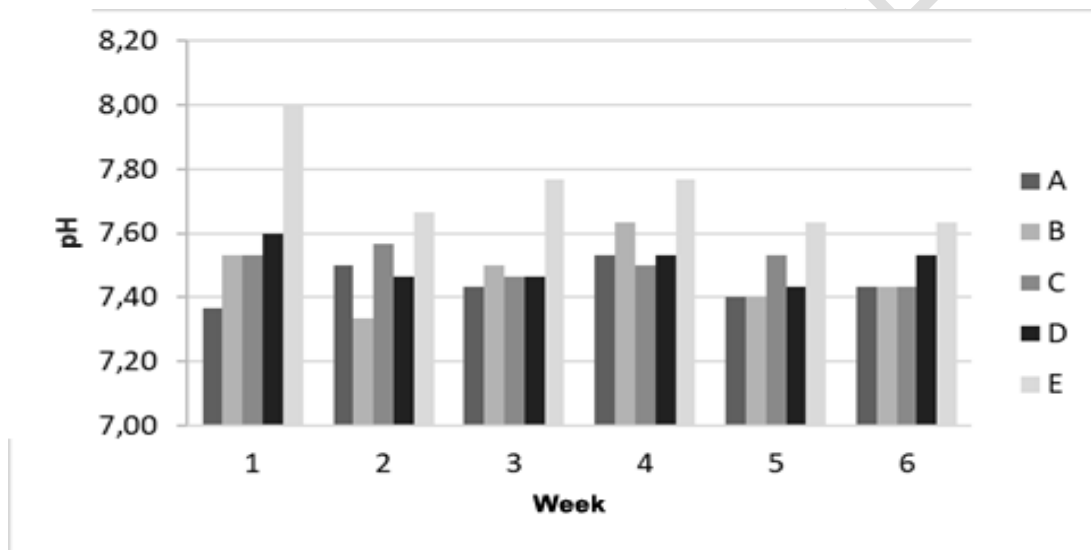


Fig. 9. Results of the average pH

3.5.4 Ammonia

As shown in figure 10, the ammonia value in the red tilapia juveniles rearing media is in the range of 0.003 mg L⁻¹ – 0.03 mg L⁻¹. The highest ammonia content was in treatment E with an average of 0.03 mg L⁻¹. Fish excrete 80-90% ammonia (N-inorganic) through osmoregulation, while from feces and urine about 10-20% of total nitrogen [28]. Ammonia accumulation in aquaculture media is one of the causes of decreased water quality which can fail in fish culture production.

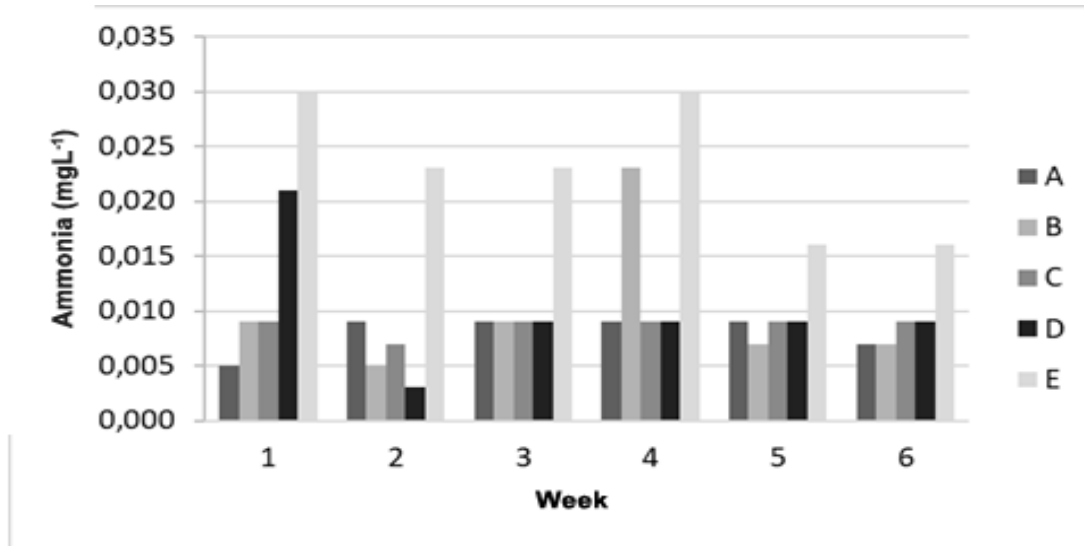


Fig. 10. Ammonia Average Measurement Results

Ammonia accumulation in aquaculture water causes various kinds of damage to organisms, especially damage to organ function and structure. Very low levels of ammonia are less harmful, but as ammonia levels increase, they quickly become harmful to aquatic animals. The sublethal effect of NH_3 is the narrowing of the gill surface. The narrowing of the gill surface will result in the speed of the gas exchange process in the gills being decreased. In addition, the sublethal effects of ammonia can also cause a decrease in the number of blood cells, a decrease in oxygen levels in the blood, reduce physical resistance and resistance to disease, and cause structural damage to various types of organs, including the liver parenchyma (Sutomo 1989).

According to [29] ammonia levels should be around $< 0.1 \text{ mg L}^{-1}$, but [30] stated that the maximum threshold for ammonia concentration for aquaculture is 0.2 mg L^{-1} . When compared with the ammonia concentration in the study, the measured ammonia concentration was still within the threshold and did not threaten the survival of the fish.

The results of observations of water quality parameters showed that the conditions of the rearing media during the research period were in conditions that were conducive to the growth of red tilapia juveniles. Likewise with other water quality parameters that tend to fluctuate, but if you pay attention to the increase in the average weight every week of observation, there is no decrease in weight. This indicates that the condition of water quality during the study was in optimum conditions to support the growth and activity of the fish herbal medicine in the feed and also did not experience a decrease in quality as a result of fluctuations in water quality.

4. CONCLUSION

Based on the results of the study, it can be concluded that the addition of fish herbs to commercial feed has an effect on growth, feed conversion ratio and protein efficiency ratio in red tilapia juveniles, but has no effect on survival rates. The optimal addition of fish herbs to the feed is 50 ml Kg^{-1} of feed. Feeding with the treatment of 50 ml Kg^{-1} of feed resulted in the smallest FCR of 1.34, so it can be concluded that treatment of 50 ml Kg^{-1} of feed was the best treatment.

NOTE:

The study highlights the efficacy of "herbal" which is an ancient tradition, used in some parts of India. This ancient concept should be carefully evaluated in the light of modern medical science and can be utilized partially if found suitable.

UNDER PEER REVIEW

REFERENCES

1. Sucipto and Prihartono. 2007. *Enlargement of Bangkok Black Tilapia in Floating Net Cages, Rushing Water Ponds, Calm Water Ponds And Cages*. Self-help Publisher, Jakarta.
2. Haetami, K., Abun, Dan Y. Mulyani. 2008. Study on the Production of Bas Probiotics (*Bacillus licheniformis*, *Aspergillusniger*, and *Sacharomices cereviseae*) as Feed Supplements and Its Implications on the Growth of Red Tilapia. *Research Results Report*. Faculty of Fisheries and Marine Sciences. Padjadjaran University.
3. Li P, Lawrence A, Castille FI, Gatlin Dm. 2007. Preliminary Evaluation of A Purified Nucleotide Mixture As Dietary Supplement For Pacific White Shrimp (*Litopenaeus Vannamei*). *Aquaculture Res*. 38:887–90.
4. Puspitasari D. 2017. The Effectiveness of Herbal Supplements on Growth and Survival of Catfish Juveniles (*Clarias Sp.*). *Journal of Science*, Vol. 5, No. 1, PP. 53-59
5. Steffens, W. 1989. *Principles of Fish Nutrition*. Ellis Horwood Limited, West Sussex, England,
6. Tacon, A. E. J. 1987. *The Nutrition and Feeding Farmed Fish and Shrimp. A Training Manual Food and Agriculture of United Nation*. Brazilling, Brazil.
7. Zonneveld, N., Huisman E. A, Dan Boon, J. H. 1991. *Principles of Fish Farming*. Gramedia Pustaka Utama, Jakarta, 318 hlm.
8. Effendi, M. I. 1997. *Fisheries Biology*. Pustaka Nusantara Foundation, Yogyakarta.
9. Samsudin R, N Suhenda and Kusdiarti. 2008. *Determination of Frequency of Feeding for Growth and Survival of Baung Fish (Mystus Nemurus) Juveniles*. *Aquaculture Technology 2008*. Aquaculture Research Center, Jakarta.
10. Arifin P. P. 2015. Evaluation of Provision of Curcuma Longa Linn Turmeric Extract. In Feed to Digestive Enzymes and Growth Performance of Carp (*Osphroneumus Gouramy*). *Indonesian Journal of Ichtiology*, 16(1):1⁻10.
11. Dervish S.N. 1991. *Medicinal Plants Family Zingiberaceae*. Research and Development Center for Industrial Plants, Bogor.
12. Wijayakusuma, H., 2003. *Healing with Temulawak*. Popular Millennials, Jakarta
13. Lestariningsih, Sjoifan O, Sudjarwo E. 2015. Effect of Meniran Plant Flour on Antimicrobial Activity of Lactic Acid Bacteria and Escherichia Coli. *J Animal Sciences*. 25:55-60.
14. Ensminger, M. E., Oldfield, J. E. And Hcinemann, W. W. 2001. *Feed and Nutrition*. The Ensminger Publishing Company. Californian Cloris
15. Heinicke, R. M. 1999. Xeronine. Morinda Inc. Hawaii Hertrampt, J. 2001. *Alternative Antibacterial Performance Promoters*. Poult. int. 40: 50-55.
16. Fadillah, R.U., 2014. Antidiabetic Effect of *Morinda Citrifolia* L. As A Treatment Of Diabetes Mellitus. *Majority Journal*, 3(7).
17. Rojtinnakorn J, Rittiopleng S, Tongsir S, Chaibu P. 2012. Tumeric Extract Inducing Growth Biomarker In Sand Goby (*Oxyeleotris Marmoratus*). *2nd International Conference On Chemical, Biological And Environmental Sciences*, 41-42.
18. Buwono, I.D. 2000. *The Need for Essential Amino Acids in Fish Ration*. Kanisius, Yogyakarta. 52 pages
19. Poedjiadi A, 1994. *Fundamentals of Biochemistry*. Ui-Press Publisher: Jakarta
20. Soeharsono. 2010. *Probiotics. Scientific Base, Applications, And Practical Aspects*. Widya Padjadjaran, Bandung.
21. Mulyani, Y. S., Yulisman, & Fitriani, M. (2014). Growth and Feed Efficiency of Tilapia (*Oreochromis Niloticus*) Periodically Fasted. *Indonesian Journal of Rawa Aquaculture*, 2(1), 1–12.Na,
22. Murtiono, L. H., Yunianto, D., & Nuraini, W. (2016). Analysis of Suitability of Grouper Cultivation Land for Floating Net Cage System With Application of Geographic

- Information System in Deep Ambon Bay Waters. *Journal of Marine Aquaculture Technology*, 6, 1-16.
23. Boyd, C.E., 1998. *Water Quality for Pond Aquaculture, 1st Ed.* Alabama Agricultural Experiment Station, Auburn University, Alabama. 37 P.
 24. P. Urbasa. 2015. Impact of Water Quality on Fish Cultivation with Plug-in Nets in Toulimembet Village, Lake Tondano, *J. Budid Waters.*, Vol. 3, No. 1, PP. 59-67.
 25. G. Macqy, J. Pajarillo, J. E. Tenorio, E. M. Trambulo, M. R. B. Apsay, And M. G. Chua. 2013. Development ff Dissolved Oxygen Monitoring System For Fish Ponds. *Ieee 3rd International Conference on System Engineering and Technology*,
 26. Cholik F, R.P. Poernomo Dan A. Jauzi. 2005. *Aquaculture: The Foundation of Hope for the Nation's Future*. Archipelago Fisheries Society and Freshwater Aquarium Park - Tmii, Jakarta.
 27. Wicaksono, P. 2005. Effect of Stocking Density on Growth and Survival of Nilem Fish *Osteochilus Hasselti* C.V. Those Raised in Floating Net Cages In Cirata Reservoir With Periphyton Feed. *Thesis*. Bogor Agricultural Institute, Bogor.
 28. Sumoharjo. 2010. Provision of Nitrogen Waste in Tilapia *Oreochromis niloticus* rearing in Aquaponic Systems: Bioreactor Design Configuration. *Thesis*. Bogor Agricultural University Graduate School. Bogor. 101 Pages
 29. Wedemeyer G. 2001. *Fish Hatchery Management*. American Fisheries Society, Bethesda, Maryland.
 30. Pillay T.V.R. 2004. *Aquaculture and The Environment*. Second Edition. Blackwell Publishing, UK.