

# **Analysis on the Influencing Factors of OFDI by Jiangsu Province in China**

---

**Abstract:**

As a big economic province in China, Jiangsu takes the lead in opening to the global market. Both the stock and flow of OFDI in Jiangsu are among the best in China, but the imbalance of investment between inter cities has affected the further development of Jiangsu's OFDI. Using spatial econometric analysis method, this paper constructed a spatial lag and spatial error model to study the spatial distribution and influencing factors of OFDI in Jiangsu province from 2008 to 2018. The results show that: the overall OFDI of all cities in Jiangsu province maintained a rapid growth, showing an upward trend; There are significant differences and positive spatial correlation among different cities. There is a spatial crowding out effect of OFDI and the investment level is directly proportional to GDP, the number of industrial enterprises, the volume of export trade and the level of attracting foreign investment.

**Key words:** *OFDI; space panel model; influencing factors; Jiangsu*

---

## **1. INTRODUCTION**

Since the reform and opening up, Jiangsu province has grasped the opportunity of opening up to the outside world, vigorously developed the export-oriented economy, and made remarkable achievements. The open economy has played an extremely important role in the economic and social development of Jiangsu Province, and has become an important support for economic growth. As a large open economy province in the east coast, Jiangsu should better and more deeply integrate into the world economy than other provinces in China, shoulder the great responsibility of stabilizing the national open economy, and play a leading and exemplary role for the whole country. The integration into the global market requires not only the integration of the market, but also the integration of the industry and the integration of production factors, which requires OFDI. Ever since China put forward the "going global" strategy in 2000, Jiangsu's Outward FDI (OFDI) has entered a period of rapid growth. In 2003, Jiangsu's OFDI flow was only 0.025 billion dollars, which increased to 6.14 billion dollars in 2013, and reached the all-time high of 14.22 billion dollars in 2016. During 2017-2019, it declined to 8.95 billion dollars in 2019. From the above data, it can be clearly seen that

---

Jiangsu province has developed from the initial focus on foreign capital inflow to a new period of strategic layout of two-way investment focusing on both capital inflow and capital outflow. It is of great significance to explore the spatial distribution of FOREIGN direct investment in Jiangsu province in the new period and analyze and study its influencing factors for improving the level of opening up to the outside world and promoting the high-quality development of economy in Jiangsu Province.

## **2. LITERATURE REVIEW**

### **2.1 Research on the Spatial Effect of OFDI**

With the development of China's OFDI, studies on the spatial effect of China's OFDI are gradually increasing. Zheng Lei and Liu Zhigao[1] analyzed China's spatial pattern of OFDI in countries along the "Belt and Road" and pointed out that differentiated spatial investment strategies should be implemented according to the economic development realities of China and countries along the "Belt and Road". Ma Shuzhong and Liu Mengheng[2] empirically tested the spatial effect of OFDI in third countries by using panel data of China and 42 countries along the Belt and Road from 2003 to 2014, and the research results showed that China's OFDI in countries along the Belt and Road had a significant third-country crowding out effect. Xiong Bin and Wang Mengjiao[3] analyzed the influencing factors of China's OFDI on countries along the "Belt and Road" from 2005 to 2015, and pointed out that China's OFDI was significantly affected by the third-country effect, which was manifested as spatial agglomeration. Yang Lizhuo and Liu Xuejiao[4] analyzed the influencing factors of China's OFDI location choice based on the OFDI data of 111 countries or regions in China from 2004 to 2013 based on institutional endowment and factor environment .

### **2.2 Research on FDI in Jiangsu Province**

There are few studies on the spatial effect of Jiangsu OFDI by domestic scholars, which mainly focus on the impact of OFDI on industrial upgrading and economic development. By establishing VAR model, Zhao Ming and Zhang Rong [5] found that there was a long-term equilibrium relationship between Jiangsu OFDI and industrial structure, wherein OFDI was negatively correlated with the development of the secondary industry and positively correlated with the development of the tertiary industry. CAI Hongzhi [6] studied the relationship between OFDI and industrial structure upgrading in the context of supply-side reform, and proposed several countermeasures and suggestions for promoting industrial optimization and upgrading in Jiangsu Province by USING OFDI. Sun Yajun [7] took Jiangsu province as an example to study OFDI of countries along the belt and Road, combined OFDI with GVC embedment, and deeply discussed the influence between Jiangsu's OFDI and GVC embedment. Zhang Jifeng et al. [8] point out that the scale of OFDI in Jiangsu is relatively small, and the performance of OFDI still needs to be improved.

To sum up, current studies on the spatial effect of OFDI are mainly focused on the national level. As for Jiangsu Province, the research focuses on the relationship between OFDI, industrial structure and economic growth, and there are few specific studies on the spatial

layout and influencing factors of OFDI in Jiangsu Province. Therefore, this paper focuses on solving the following problems: first, what is the spatial distribution and spatial effect of OFDI in Jiangsu province? Second, what are the main factors affecting OFDI in Jiangsu province? To solve the above problems, this paper used spatial econometric analysis method to analyze the OFDI data of cities in Jiangsu Province from 2008 to 2018, calculated the global Moran's I statistics, described the Moran's I scatter diagram, studied the influencing factors of OFDI, and put forward relevant policy suggestions based on the empirical results.

## Materials and method

### 3. OFDI SPATIAL AUTOCORRELATION TEST

#### 3.1 Spatial Autocorrelation Analysis

The spatial autocorrelation test is the most common method to judge spatial distribution characteristics of a certain observation value, which are judged by Moran's I index. In this paper, Moran's I statistic is selected to test whether the spatial correlation of OFDI exists in Jiangsu province. Global Moran's I is defined as:

$$I = \frac{n \sum_{i=1}^n \sum_{j=1}^n W_{ij} (y_i - \bar{y})(y_j - \bar{y})}{S^2 \sum_{i=1}^n \sum_{j=1}^n W_{ij}}$$

In the above formula,  $y_i$  represents the observed value of OFDI in region  $i$ ,  $n$  is the total number of regions, and  $W_{ij}$  is the binary weight matrix of adjacent space. The general adjacency weight matrix is adopted in this paper.  $W_{ij}$  is defined as 1 when any city  $i$  and another city  $j$  in Jiangsu province are adjacent, and 0 when they are not adjacent. A city is not adjacent to itself, so a symmetric matrix of  $13 \times 13$  whose main diagonal elements are all 0 is formed. Moran's I varies in the range  $(-1, 1)$ , and if there is no spatial autocorrelation, the expected value of  $I$  is close to 0. When  $I$  is positive, positive autocorrelation exists. When  $I$  is negative, negative autocorrelation exists. Meanwhile, the significance of autocorrelation is tested by constructing statistic  $Z$ . In this paper, OFDI data of cities in Jiangsu province from 2008 to 2018 were selected for spatial analysis, and Moran's I statistics and corresponding P values were calculated. The spatial weight matrix  $W$  was the spatial adjacency matrix mentioned above. The calculation results are shown in Table 1:

**Table 1. Moran's I index of OFDI in all cities in Jiangsu Province**

year	2008	2009	2010	2011	2012	2013
Moran's I (OFDI)	0.198**	0.198**	0.447***	0.264**	0.018**	0.289**
year	2014	2015	2016	2017	2018	
Moran's I (OFDI)	0.234**	0.136	0.120	0.190*	0.173*	

\*Note : Robust standard errors are in parentheses, \*\*\*, \*\* and \*, respectively, are significant at 1%, 5% and 10%.

As can be seen from Table 1, during 2008-2018, the corresponding statistic P value of OFDI of cities in Jiangsu Province was very small. Except 2015 and 2016, the null hypothesis was rejected at the significant level of 0.05 in all other years, and Moran's I statistic was significantly positive, indicating that OFDI of cities in Jiangsu province had a positive spatial correlation, that is, spatial aggregation.

### 3.2 Moran's I Scatter Plot and LISA Analysis

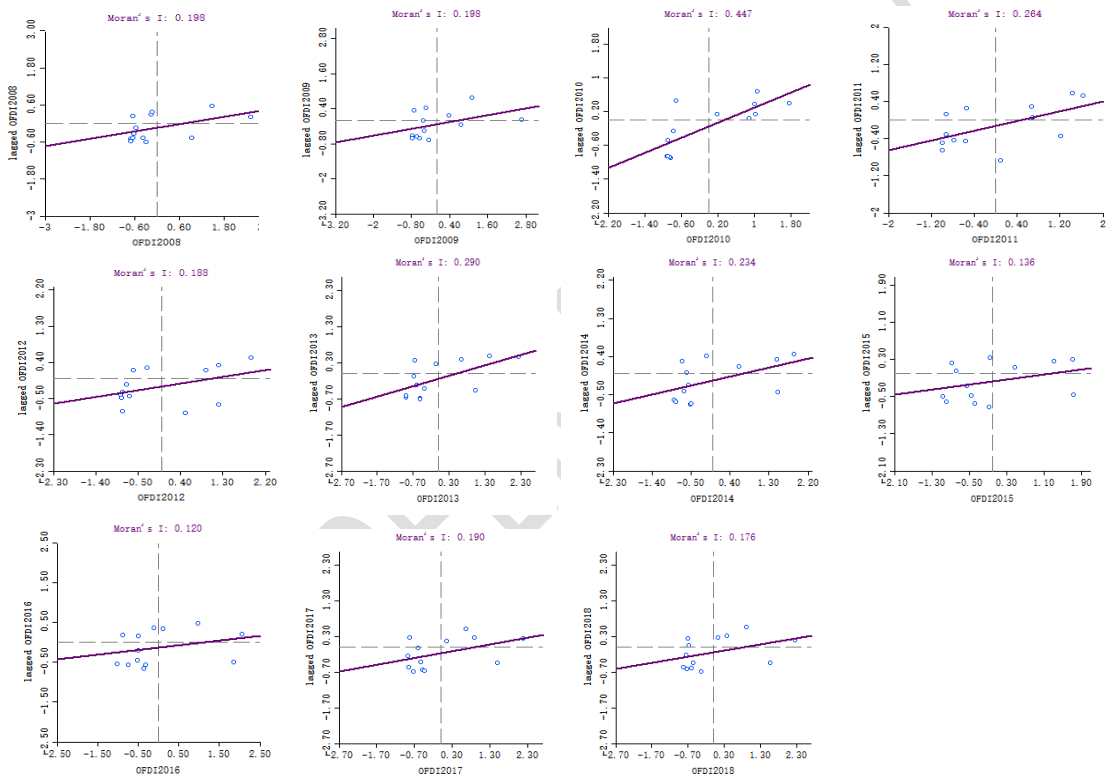


Fig 1: Scatter Plot and LISA Analysis

\*Note : Scatter plot calculated by Genda

Through the regression line, it can be seen that the scattered points in the figure are positively correlated, which is consistent with the calculation result of Moran's I statistic, indicating that OFDI of all cities in Jiangsu province has spatial aggregation.

## 4. EMPIRICAL ANALYSIS RESULTS and DISCUSSION

### 4.1 Spatial Lag Model (SLM) and Spatial error Model(SEM)

The explained variable studied in this paper is the direct investment of cities in Jiangsu province, which is expressed by flow. Considering the spatial autocorrelation of the explained variables, the interaction term of third-party OFDI and geographical weight  $W$  was added to the

explanatory variables, and the spatial lag model (SAR) was constructed as follows:

$$OFDI = \alpha_0 + \alpha_1 POP + \alpha_2 GDP + \alpha_3 CUS + \alpha_4 IND + \alpha_5 EXP + \alpha_6 IFDI + \rho \cdot W \cdot OFDI + \varepsilon$$

If the spatial dependence exists in the perturbation term, that is, the missing variables that are not included in the explanatory variable and have an impact on the dependent variable have spatial correlation, it can be tested by constructing a spatial error model (SEM) :

$$OFDI = \alpha_0 + \alpha_1 POP + \alpha_2 GDP + \alpha_3 CUS + \alpha_4 IND + \alpha_5 EXP + \alpha_6 IFDI + \varepsilon$$

$$\varepsilon = \lambda W \varepsilon + \mu$$

The meanings and data sources of variables in the model are as follows:

**Table 2. Meanings and Data Sources**

Variables	Meanings	Data Sources
LnOFDI	Outward FDI (flow)	Jiangsu Statistical Yearbook
LnPOP	population	Jiangsu Statistical Yearbook
LnGDP	GDP	Jiangsu Statistical Yearbook
LnCUS	Retail sales of social consumer goods	China City Statistical Yearbook
LnIND	Number of industrial enterprises	China City Statistical Yearbook
LnEXP	Export trade volume	Jiangsu Statistical Yearbook
LnIFDI	Inward FDI (flow)	Jiangsu Statistical Yearbook

## 4.2 Regression Analysis

In this paper, spatial lag model (SAR) and spatial error model (SEM) are used to test the influencing factors of OFDI of cities in Jiangsu Province, and the fixed effect model is selected. The regression results of the full-sample spatial panel fixed effect model are shown in the following table:

**Table 3. Regression Results of Spatial Panel Models**

Variables	OLS	SAR	SEM
<i>rho</i>	-	-0.0594* (0.0260)	-
<i>lambda</i>	-	-	-0.0705* (0.0357)
<i>LnPOP</i>	-10.94** (4.594)	0.545 (0.359)	0.603 (0.410)
<i>LnGDP</i>	0.356*** (0.108)	0.431*** (0.174)	0.467*** (0.172)
<i>LnCUS</i>	3.110*** (0.413)	0.162 (0.494)	0.131 (0.492)

<i>LnIND</i>	-0.863 (0.529)	1.330*** (0.482)	1.352*** (0.494)
<i>LnEXP</i>	-0.359 (0.336)	0.538* (0.314)	0.558* (0.325)
<i>LnIFDI</i>	2.004*** (0.617)	0.759** (0.353)	0.715* (0.372)
<i>_cons</i>	17.57 (25.39)	-	-
<i>sigma2_e</i>	-	0.617*** (0.119)	0.615*** (0.115)
<i>Log-Likelihood</i>	-	-168.2444	-168.2176
<i>N</i>	143	143	143
<i>R2</i>	0.631	0.651	0.660

\*Note: Robust standard errors are in parentheses, \*\*\*, \*\* and \*, respectively, are significant at 1%, 5% and 10%.

Firstly, the third party effect is analyzed in detail. The spatial coefficient in the SAR model is negative at the level of 10%, indicating that OFDI of other cities is competitive with OFDI of current cities, resulting in crowding out effect. The spatial error term of the SEM model is also significantly negative at the level of 10%, which indicates that the third unpredictable factor not included in the explanatory variable also has a crowding effect on the OFDI of cities in Jiangsu Province.

Secondly, GDP of cities in Jiangsu province is significantly positive at the level of 1%, indicating that cities with higher GDP have more OFDI. To a certain extent, GDP represents the economic strength of the city and its high economic level, thus it has a high ability of foreign direct investment. The number of industrial enterprises is significantly positive at the level of 1%, which indicates that the more the number of local industrial enterprises, the more their outbound investment. The more industrial enterprises the city has, the higher the industrial level, the stronger the economic strength and the better foreign investment capacity. Export volume is significantly positive at the level of 10%, foreign investment attraction is significantly positive at the level of 5% in SAR model and 10% in SEM model, respectively, indicating that export trade, foreign investment attraction and OFDI are positively correlated, that is, the stronger the export capacity is, the more foreign investors are attracted, the more OFDI is.

## 5. CONCLUSION AND POLICY RECOMMENDATIONS

### 5.1 Conclusion

In this paper, the spatial econometric analysis method was used to study the OFDI level of cities in Jiangsu Province, and the conclusion was drawn that there was spatial aggregation of OFDI in cities in Jiangsu Province, and the aggregation space was classified and summarized. Through the establishment of SAR and SEM spatial econometric models, the factors affecting the LEVEL of OFDI are studied. The results show that: first, there is a positive spatial correlation between the OFDI of each city in Jiangsu Province, and the OFDI of this city is competitive with the surrounding cities, resulting in crowding out effect. Second, the coefficients of GDP, number

---

of industrial enterprises, export volume, foreign investment attraction and other variables of each city are significantly positive, which indicates that the higher the GDP level is, the stronger THE IFDI capacity is, and the cities with stronger export capacity have more OFDI. Thirdly, the OFDI level of different cities in Jiangsu varies greatly. The OFDI capacity of southern Jiangsu is stronger than that of northern Jiangsu, and there are many factors affecting the OFDI level, such as GDP, foreign trade volume, and foreign direct investment flow.

## 5.2 Policy Suggestions

Based on the above theoretical analysis and empirical test, this paper puts forward the following suggestions on effectively promoting the OFDI level of cities in Jiangsu Province.

First, Jiangsu province should pay attention to the regional balanced development of OFDI. From the above analysis, it is not difficult to see that the OFDI level of cities in Jiangsu province presents the status quo of unbalanced development, which can be roughly divided into three levels: the southern Jiangsu urban circle led by Suzhou, which shares resources, complements advantages and has a high overall development level. The OFDI level of the five cities in northern Jiangsu has a big gap with that in southern Jiangsu. As the provincial capital city, Nanjing still has more OFDI by taking advantage of its policy advantages when the OFDI level of surrounding cities is average. Therefore, northern Jiangsu should give full play to the advantages of Xuzhou as a transportation hub and Lianyungang as a city supported by the "Belt and Road" strategy to improve THE OFDI level. Nanjing gives full play to its role as the provincial capital city and takes advantage of its rich university resources and enterprise advantages to drive the development of surrounding cities so as to promote the overall balanced development of OFDI level in all cities in Jiangsu Province.

Second, Jiangsu province should strengthen the complementary advantages of investment cooperation among various cities. Jiangsu province, as a large economic province in China, has unique advantages and obvious advantages of various cities. As an important transportation hub in China, Xuzhou has strong railway transportation capacity. As the first node city of the new Eurasian Land Bridge economic Corridor, Lianyungang has certain shipping capacity. Nanjing and Suzhou have developed economy, obvious technological advantages and strong investment ability. We should give full play to the comparative advantages of various cities, take the construction of Jiangsu Free Trade Zone as the link, integrate the resource endowment of Suzhou, Nanjing and Lianyungang, complement each other's advantages, and further promote the development level of OFDI in Jiangsu Province.

Third, Jiangsu province should "go out" with a high level to promote high-quality "bring in". As two directions of internationalization. OFDI and IFDI show significant positive interaction in economic development. Municipal enterprises in Jiangsu province are highly complementary and have great potential for cooperation. Through foreign investment, cities in Jiangsu province have increased industrial docking, and also promoted IFDI from other countries to Jiangsu Province, forming a circular interaction of two-way direct investment, deepening industrial and supply chain cooperation, and realizing high-quality development.

---

## REFERENCES

- [1] Zheng Lei, Liu Zhigao. Chinese spatial pattern of direct investment along the "Belt and Road" line [J]. Progress in Geography Science, 2015,34 (05): 563-570.
- [2] Ma Shuzhong, Liu Mengheng. Study on the third country effect of OFDI in countries along the "Belt and Road": based on spatial measurement method [J]. International Trade Issues, 2016 (07): 72-83.
- [3] Xiong Bin, Wang Mengjiao. Study on China's direct investment in countries along the Belt and Road route based on spatial perspective [J]. International Trade Issues, 2018 (02): 102-112.
- [4] Yang Lizhuo, Liu Xuejiao. Difference in institutional environment and endowment and OFDI location preference in China [J]. China economy problem, 2021 (02): 183-200.
- [5] Zhao Ming, Zhang Rong. Study on the Relationship between Foreign Direct Investment and Industrial Structure Adjustment in Jiangsu Province —— Empirical Analysis based on VAR Model [J]. Science and Technology management Research, 2013,33 (04): 95-98.
- [6] Cai Hongzhi. Study on the Impact of OFDI on Industrial Structure Upgrading in Jiangsu Province [J]. Modern Business, 2018 (28): 57-58.
- [7] Sun Yajun. The impact of global value chain embedding of countries and regions along the Belt and Road on Jiangsu OFDI [J]. Foreign trade, 2020 (10): 41-45.
- [8] Zhang Jifeng, Mou Yajing, Sun Jun. Research on Promoting High-quality Development of Two-way Direct Investment in Jiangsu in the New Era [J]. Land Bridge View, 2021 (01): 54-56.