

NAVIGATING A HOSTILE SUBCLAVIAN LOOP DURING TRANSRADIAL ANGIOGRAPHY

ABSTRACT

Hostile anatomy of the subclavian artery (severe tortuosity and/or heavy calcification) remains a significant obstacle for the transradial approach during coronary angiography and interventions. Herein we report a case of transradial angiography with a hostile subclavian loop which could not be negotiated by .035 terumo wire, extra stiff amplatz wire, balloon assisted tracking [BAT] technique and was ultimately negotiated by buddy wire technique with a .014 coronary wire and amplatz extra stiff wire.

INTRODUCTION

Radial artery access is associated with a significant reduction of vascular access site complications and lower mortality rate compared with femoral artery access in patients with acute ST-elevation myocardial infarction (STEMI) undergoing primary percutaneous coronary intervention (PCI)^{ref1}. Underlying tortuosity in the upper extremity is often unpredictable and can cause operators to avoid the otherwise favorable radial approach, or crossover to the femoral artery, to preserve the reperfusion times. Improved techniques and better understanding of how to handle tortuosity encountered in the radial, brachial, or subclavian artery are needed to overcome these frequent causes of access failure^{ref2}. Balloon assisted tracking (BAT) is a new technique that has been recently developed to overcome tortuosity in the arteries of the upper extremity^{ref3}.

CASE REPORT

A 58 yrs old lady known case of chronic kidney disease on haemodialysis, hypertensive was planned for renal transplant. Her preoperative echocardiography workup revealed severe left ventricular dysfunction [LVEF 30%], global hypokinesia and severe PAH [PASP 70MM]. In view of age, LV dysfunction and symptoms of dyspnoea on exertion class 111 and chest heaviness she was planned for transradial angiography. Radial artery was cannulated with 5fr glide sheath but .035 terumo wire could not navigate the loop in subclavian artery^{fig1}. A .035 amplatz extra stiff wire was able to enter aortic arch but could not progress further^{fig2}. Selective angiography revealed no dye flowing beyond subclavian loop^{fig3} but since the amplatz wire was able to negotiate the loop was traversed with .014 BMW wire and balloon assisted tracking with 2-10mm balloon inflated at 4 atm was tried but the 5f xb guiding catheter could not negotiate the loop^{fig4}. Then an amplatz extra stiff wire was introduced as a buddy along with the .014 coronary wire and it entered the ascending aorta^{fig5} and the tiger catheter was traversed over it and then the coronary wire was removed. Left coronary injection revealed 50% stenosis in mid lad^{fig6}. The right coronary artery could not be hooked with 5F tiger, 5F Jr and 5FAI1 and all catheter exchanges were done with amplatz extra stiff wire^{fig7,8,9}. Non selective injection with 5FAr1 catheter revealed a normal anomalous right coronary artery^{fig10}.

DISCUSSION

Hostile anatomy of the subclavian artery, especially through the right arm, remains an important limitation of the transradial approach in coronary angiography and interventions. This unfavorable anatomy often determines a need to switch to the femoral or contralateral radial approach in order to complete the procedure. The major determinants of a hostile subclavian artery are severe tortuosity of the vessel and/or heavy calcification or congenital anatomic abnormalities, such as arteria lusoria^{ref4}.

Severe tortuosity of the subclavian arteries has been found in 6–10% of patients undergoing a transradial approach. If a standard 0.035-inch J-wire or terumo wire is unsuccessful, then one should consider using a torqueable atraumatic 0.035-inch wire, such as a Wholey guidewire (Medtronic) or Magic Torque guidewire (Boston Scientific Corporation), followed by either a 0.014-inch angioplasty wire or 0.025-/0.035-inch hydrophilic wire if unsuccessful. Additionally, an operator could consider newer, more specialized wires such as a 0.035-inch, 1.5-mm Glidewire Baby-J hydrophilic-coated guidewire (Terumo Interventional Systems), which can provide the lubricity of a hydrophilic wire while maintaining the safety of a small trackable J-tip.

Another more recently developed option is balloon-assisted tracking, which was first described by Patel et al as a safe and effective method for crossing anatomic difficulties from a radial approach^{ref5}. A coronary angioplasty balloon (1.5 mm for a 5-F catheter; 2 mm for a 6-F catheter) is placed at the end of a catheter with half of the balloon exiting the distal tip of the catheter (total balloon length 15 or 20 mm). The use of both semicompliant and compliant balloons has been described for this technique. The balloon is then inflated to 4 to 6 atm and the balloon-catheter complex is advanced over a guidewire.

If the loop is crossed with a wire but there is difficulty straightening the loop for the safe delivery of 5-/6-F diagnostic or guide catheters, then mother-daughter strategies can be employed to navigate past the anomaly. Garg et al described a pigtail-assisted tracking method where a 5-F pigtail catheter is loaded within a 6-F guide catheter^{ref6}. The distal pigtail is then extended outside the guide and tracked over the wire and through the loop. The benefit of this approach is that it can reduce the “razor-blade effect” of a guide catheter tip as it crosses the tortuous portion of a radial loop.

CONCLUSION

In our case we were not able to navigate a hostile subclavian loop by the described techniques like terumo, hydrophilic, extra stiff wires and the balloon assisted tracking technique. We were successful by using amplatz extra stiff wire as a buddy to a .014 ptca wire and were able to negotiate the subclavian loop successfully.

COMPETING INTERESTS DISCLAIMER:

Authors have declared that no competing interests exist. The products used for this research are commonly and predominantly used products in our area of research and country. There is absolutely no conflict of interest between the authors and producers of the products because we do not intend to use these products as an avenue for any litigation but for the advancement of knowledge. Also, the research was not funded by the producing company rather it was funded by personal efforts of the authors.

REFERENCES

- 1 Bertrand OF, Bélisle P, Joyal D, et al. Comparison of transradial and femoral approaches for percutaneous coronary interventions: a systematic review and hierarchical Bayesian meta-analysis. *Am Heart J* 2012;163(4):632–648
2. Norgaz T, Gorgulu S, Dagdelen S. Arterial anatomic variations and its influence on transradial coronary procedural outcome. *J Interv Cardiol* 2012;25(4):418–424
3. Patel T, Shah S, Pancholy S, Rao S, Bertrand OF, Kwan T. Balloon-assisted tracking: a must-know technique to overcome difficult anatomy during transradial approach. *Catheter Cardiovasc Interv* 2014;83(2):211–220
4. Abhaichand RK, Louvard Y, Gobeil JF, et al. The problem of fusoria in right transradial coronary angiography and angioplasty. *Catheter Cardiovasc Interv* 2001;54:196–201
5. Patel T, Shah S, Pancholy S. Balloon-assisted tracking of a guide catheter through difficult radial anatomy: a technical report. *Catheter Cardiovasc Interv*. 2013;81:e215-e218. .
6. Garg N, Sahoo D, Goel PK. Pigtail assisted tracking of guide catheter for navigating the difficult radial: overcoming the “razor effect.” *Indian Heart J*. 2016;68:355-360.

FIGURES

FIG1 terumo wire

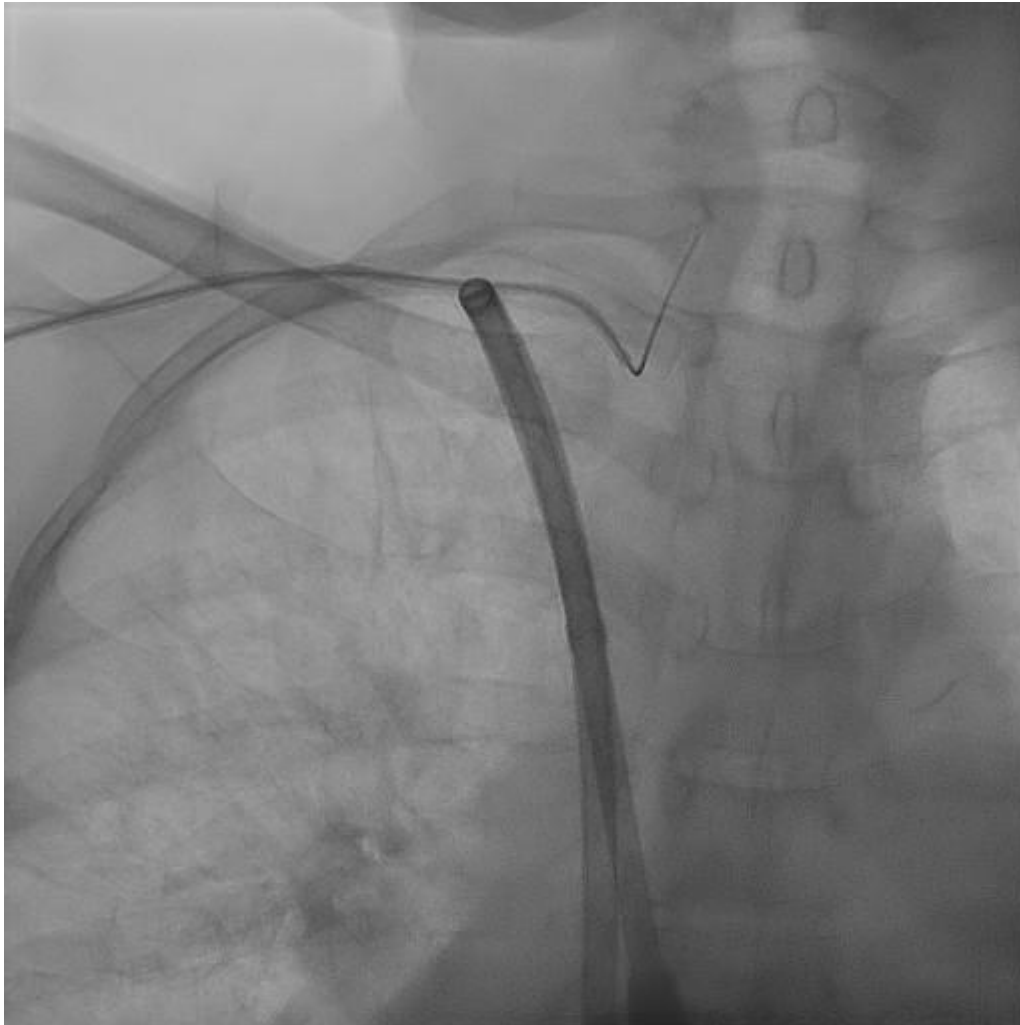


FIG2 amplatzexta stiff wire in loop

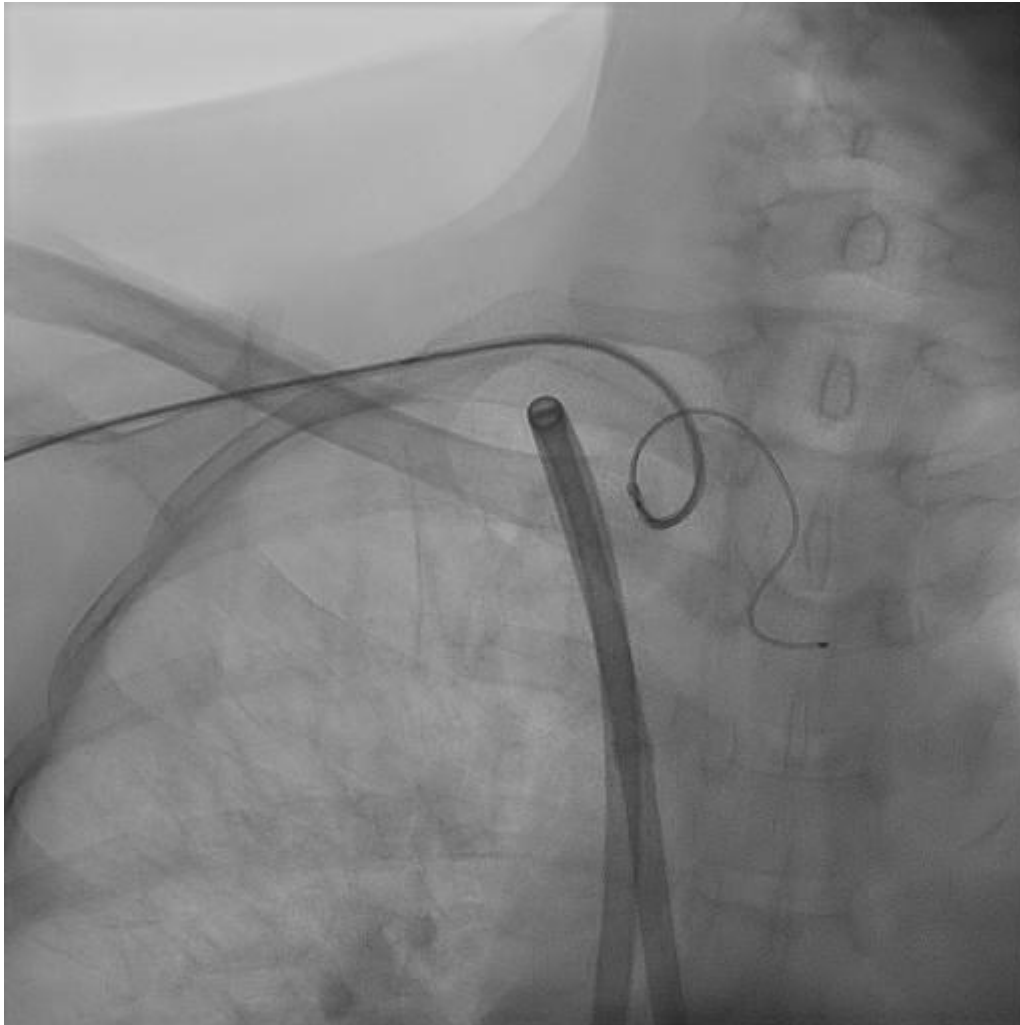


FIG3 check shot of subclavian loop

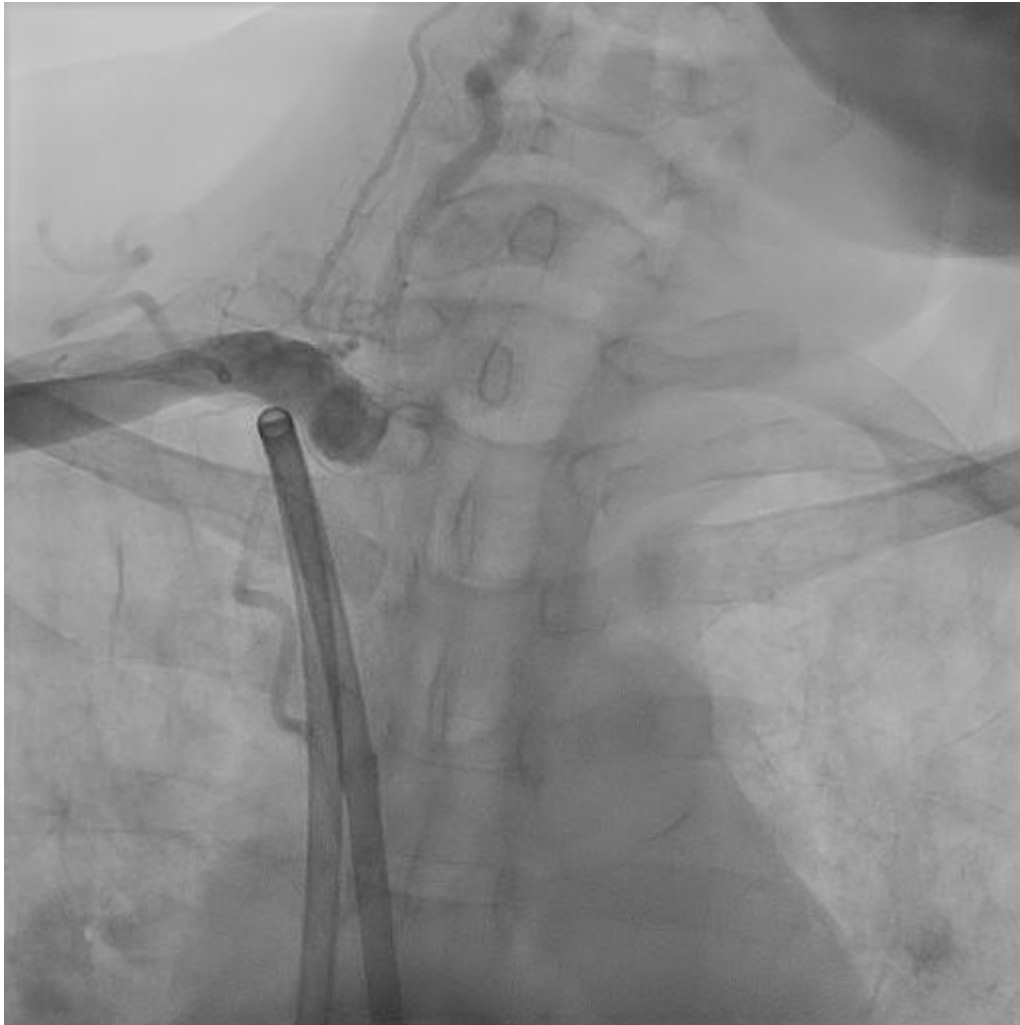


FIG 4 balloon assisted tracking

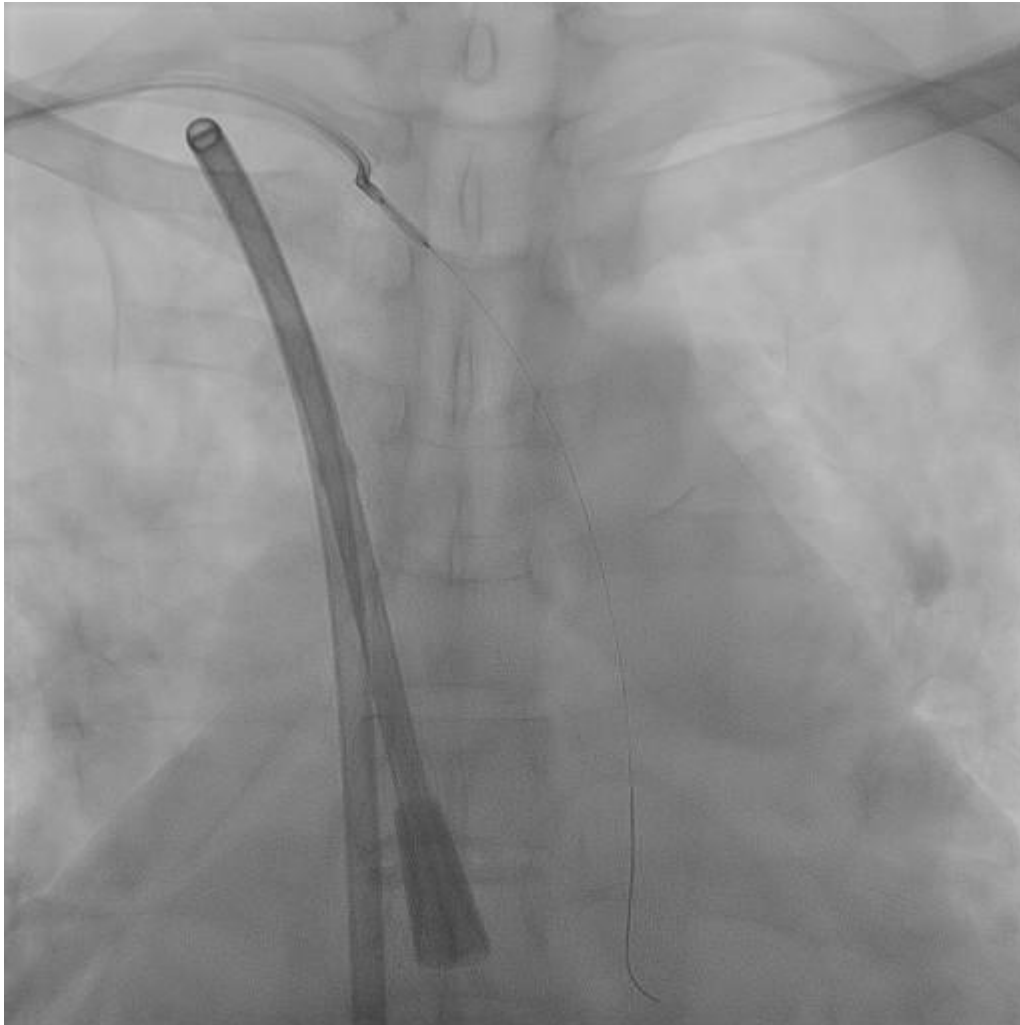


FIG5 buddy wires amplatz and coronary wire

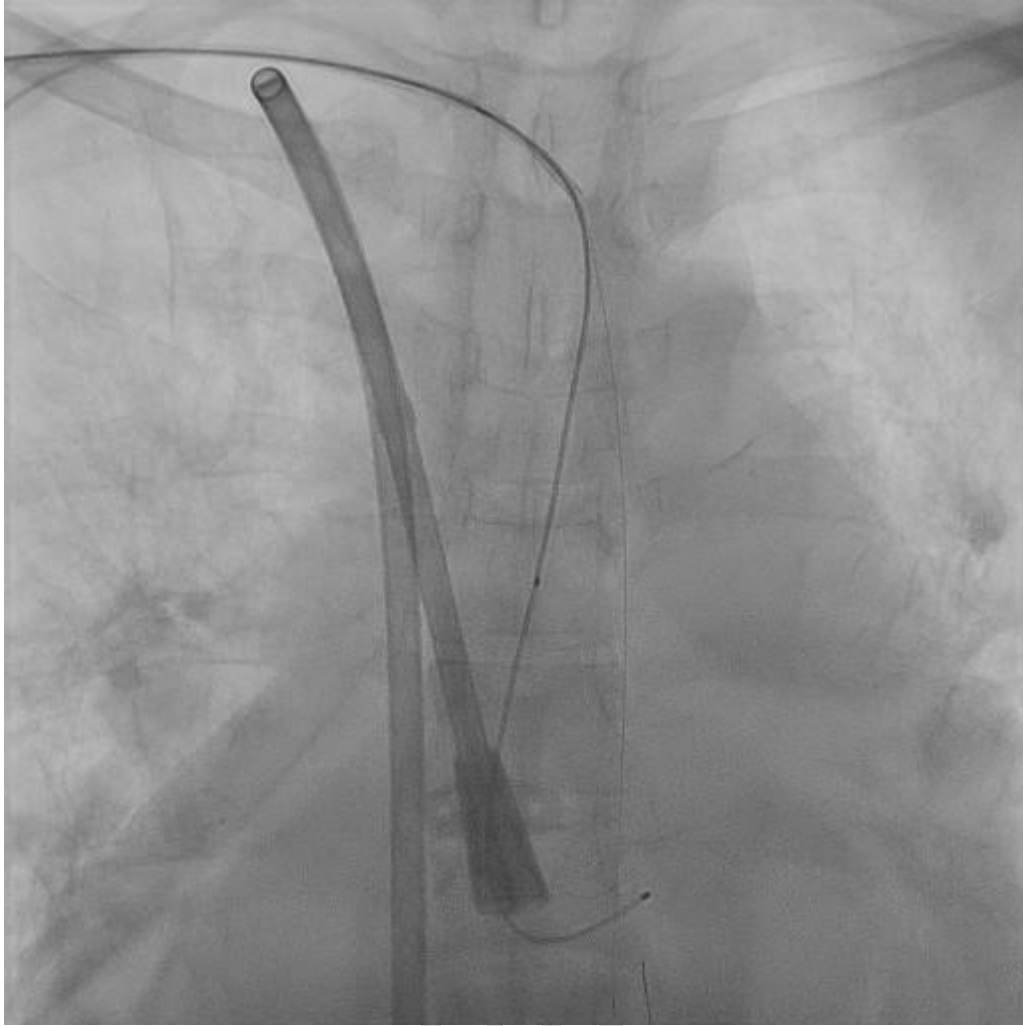
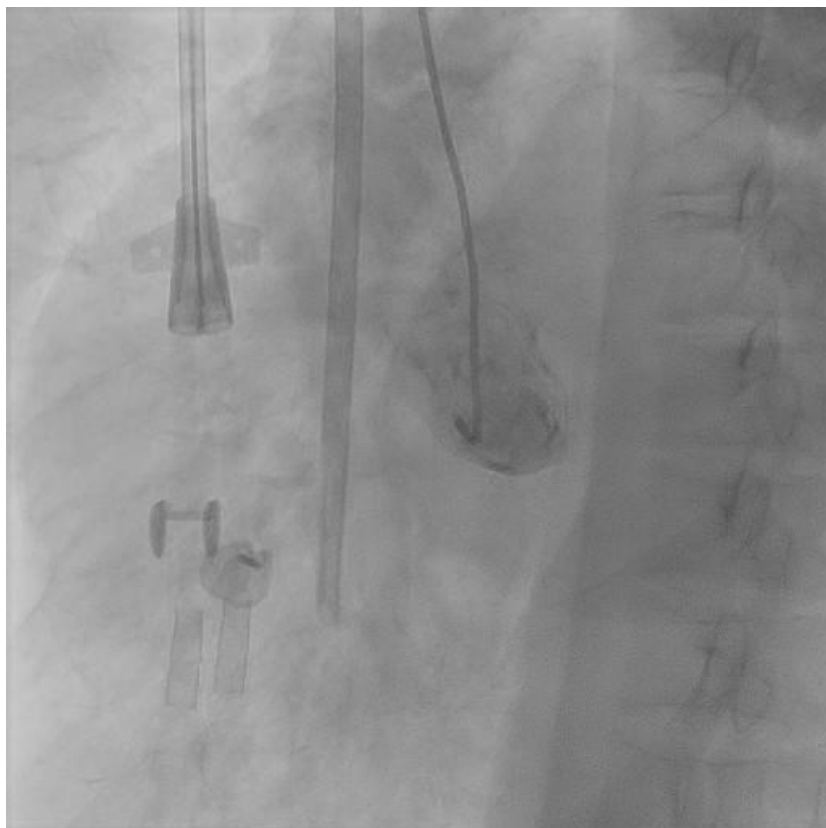


FIG6 lad 50%



Fig7jr catheter



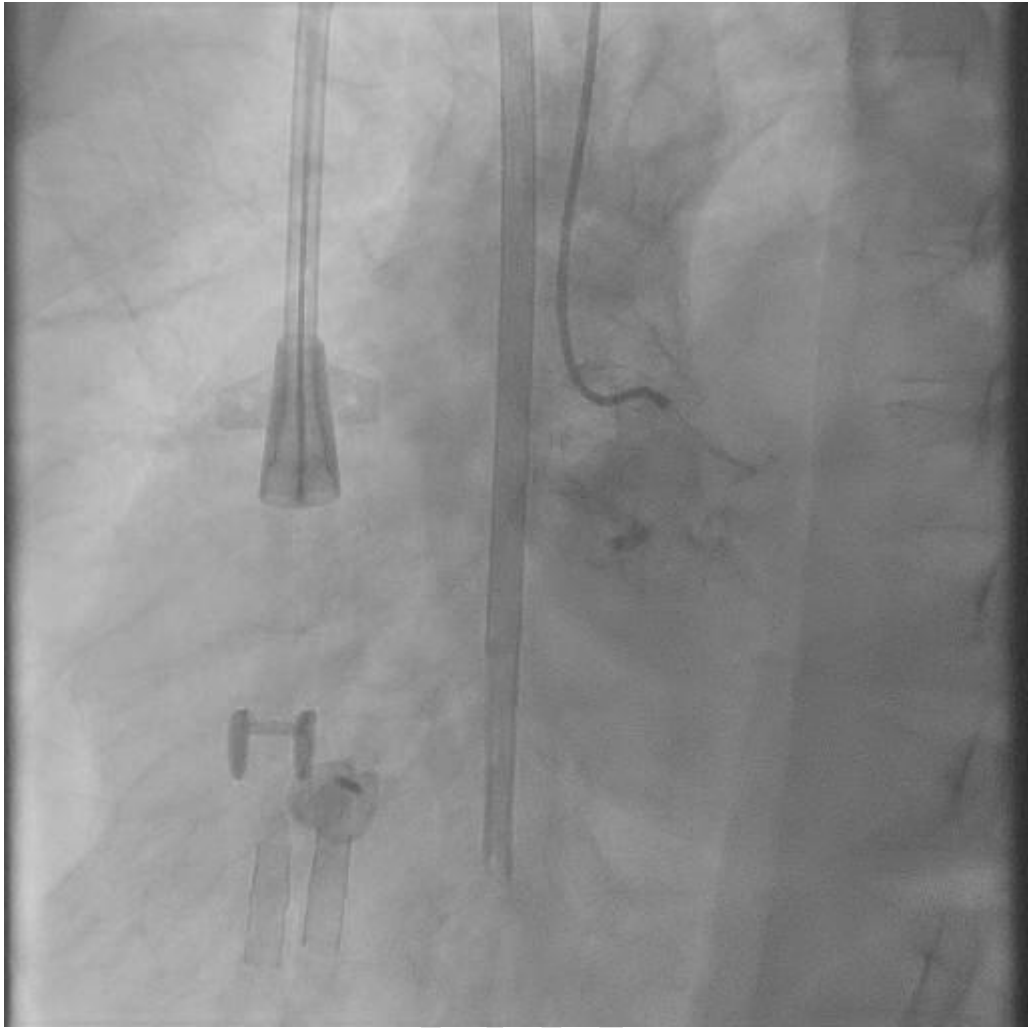
UNDER PEER



Fig8 tiger catheter

UNDER PEER REVIEW

Fig9 al1catheter



UNDER P...



Fig10 ar catheter

UNDER PEER REVIEW