

Original Research Article

Determining the Main Morphometrical Traits to Describe Body Weight in Male *Hampala* Barb Fish (*Hampala macrolepidota*)

ABSTRACT

ABSTRACT:

Aims: determine the main morphometrical traits that influence of body weight in male *Hampala* Barb (HB) fish. Amount 26 morphometrical traits were measured from 42 male HB fishes. **Place and Duration of Study:** The fishes were taken from Kampar Kiri river at Mentulik Village, Kampar Regency, Riau Province, This research was conducted in February-April 2018

Methodology: The method used in this research is the survey method, by taking morphometric measurements on fish *Hampala* fish is used as the object of research

Results: Research showed that average body weight of HB fishes were 245.24 ± 136.54 g. Four morphometrical measurements of maximum body height, pre-dorsal length, pre-ventral fin length, and caudal peduncle height were selected as the main four variables to predict body weight with the coefficient of determination (R^2) of 0.95. Therefore, a variable of maximum body height able to predict the body weight with R^2 value of 0.91

Conclusion: The body weight of *Hampala* fish can be predicted with morphometrical measurements accurately. The maximum body height able to influence the body weight of *Hampala* fish with the R^2 value of 0.91. Overall morphometrical measurements of maximum body height, pre-dorsal length, pre-ventral fin length and caudal peduncle height can describe the body weight of *Hampala* fish with $R^2 = 0.95$.

Keywords: *Hampala* Barb fish, morphometrics, body weight, coefficient determination

1. INTRODUCTION

Hampala, or *Hampala* barb (*Hampala macrolepidota*), is an economically important freshwater fish species in Southeast Asia. In Indonesia, this fish had a high economic value and ecologically controlling the ecosystem (Herlan and Wulandari 2021). Although the fisheries sector has high benefit, knowledge of fish growth pattern and morphometric characteristics are not studied in aquaculture and capture fisheries (Risidawati *et al.* 2020). A significant obstacle in the culture and management of *Hampala* fish are uncertainty body weight estimation directly with or absence of fish measuring equipments. Hence, increasing the fish production and efficiency are not reached. Despite this, the fish market and fish quality are not fullfill (Risidawati *et al.* 2020).

Another significant issues are the considerable morphometric variation between individual fish, particularly between males and females, which can result in various growth

patterns. The specific morphometric parameters required for male fish body weight determination further complicate the issue, making accurate measurement challenging (Herawati *et al.* 2022). Moreover, managing wild *Hampala* and aquaculture fish stocks can make the assessment of fish health and growth efficiently.

This study aims to predict the body weight of *Hampala* fish based on morphometrical measurements. This findings are also expected to solve the problem in fish weighing. The advantage of this research can increase the efficiency of fisheries stock management including of managing *Hampala* fish in both wild environments and aquaculture.

2. MATERIAL AND METHODS

2.1 Sampling stations

This research was conducted in February-April 2018 in Kampar Kiri River, Mentulik Village, Kampar Kiri Hilir District, Kampar Regency, Riau Province. Observations and sample measurements were conducted at the Aquatic Biology Laboratory of the Faculty of Fisheries and Marine Sciences, Riau University. The method used in this research is the survey method, *Hampala* fish is used as the object of research, and the Kampar Kiri River is used as the research location. The research location in Kampar Kiri River can be seen in Figure 1.

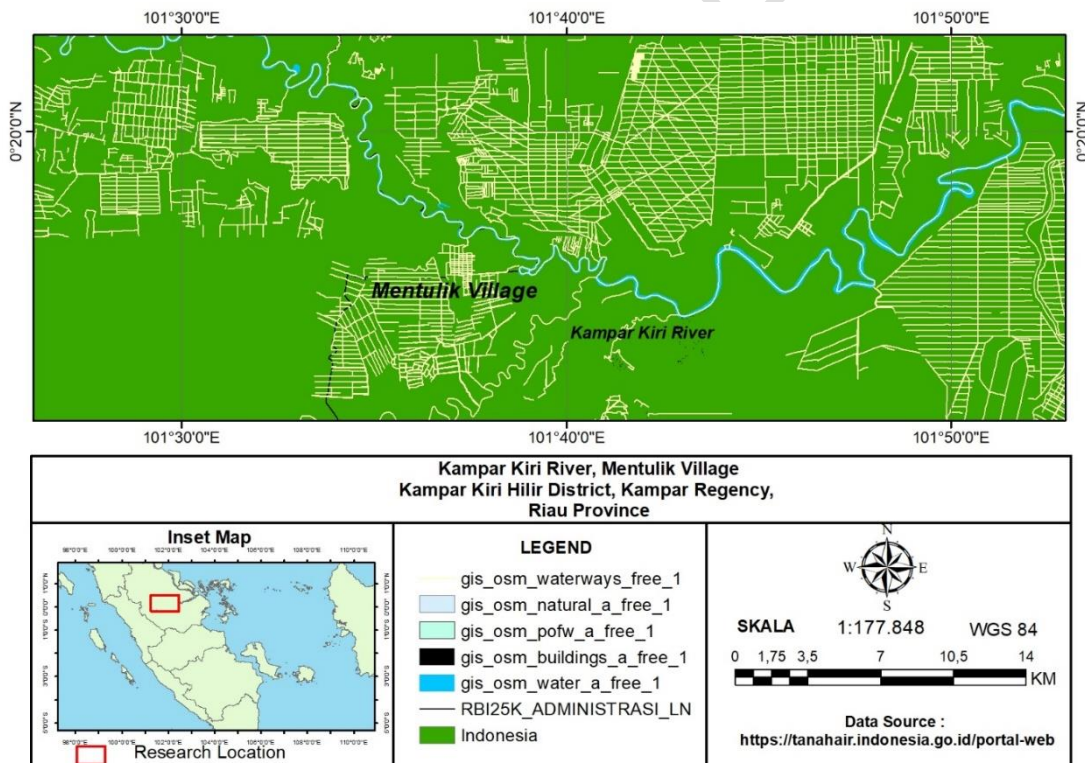


Figure 1. Sampling stations in Kampar Kiri River, Mentulik Village, Kampar Kiri Hilir District, Kampar Regency, Riau Province

Determination of sampling stations using purposive sampling method by considering different environmental conditions in the study area, to represent the characteristics of waters in the Kampar Kiri River, Mentulik Village. There are three sampling points: (1) Sampling Point I is located in the upstream part of the river, where there are no community activities; (2) Sampling Point II is in the middle of the river, which is surrounded by residential areas with toilet activities, fishing boat stopovers, and fisheries activities such as KJA and

fishing; (3) Sampling Point III is located in the downstream of the river, where there are fish cages and fishing activities.

2.2 Fish Collection and Morphometric Measurements

Sampling of coal fish used the census method that is, the number of fish caught was taken as a whole. Fish sampling was conducted once in 2 weeks, namely in February-April 2018. Fish were taken in fresh and intact conditions with varying sizes ranging from the smallest to the largest, and then the fish were put into a cool box to be analyzed in the laboratory. Morphometrical measurements were performed using digital calipers as shown in Figure 2. While, meristic characteristics were calculated manually.

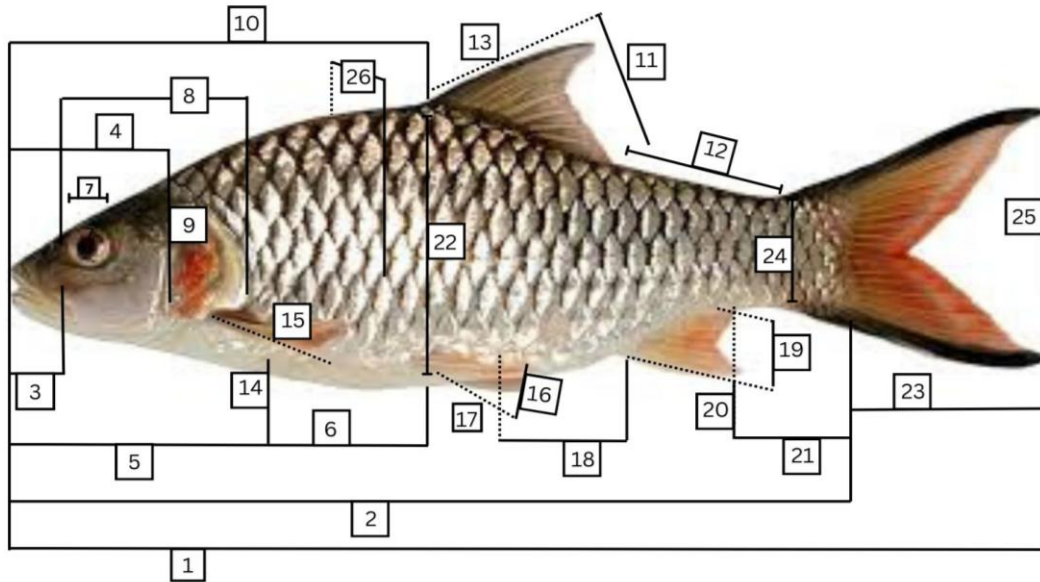


Figure 2. The scheme of morphometrical measurements in *Hampala* Barb fish (*Hampala macrolepidota*) consisted of total length (1), standard length (2), snout length (3), head length (4), pre-ventral fin length (5), pre-anal length (6), eye diameter (7), pre-orbital length (8), head height (9), pre-dorsal length (10), dorsal fin length (11), post back distance (12), dorsal fin height (13), pelvic fin height (14), pectoral fin length (15), ventral fin length (16), ventral fin height (17), ventral anal distance (18), anal fin length (19), anal fin height (20), caudal peduncle length (21), maximum body height (22), caudal length (23), caudal peduncle height (24), caudal height (25) and body width (26).

2.3 Environmental Measurements Parameters

Environmental parameter measurements are conducted in tandem with the fish sampling process. This simultaneous approach, which measures temperature, brightness, pH, DO, and CO₂, ensures an efficient research process. The results of these measurements are then compared with water quality standards to assess the environmental conditions of the research site and their impact on the survival of *Hampala* fish.

2.4 Regression Analysis

This research method uses multiple linear regression analysis to identify the relationship between several independent variables and one dependent variable. The multiple linear regression equation according Kerzérho *et al.* (2023) as follows:

$$Y = a + b_1X_1 + b_2X_2 + \dots + b_nX_n$$

In a multiple linear regression equation, Y is the dependent variable to be predicted or explained. The constant a, or intercept, is the value of Y when all the independent variables X_i are zero. Each independent variable, or predictor, is expressed as X_1, X_2, \dots, X_n and is used to help explain or predict the value of Y. The regression coefficients b_1, b_2, \dots, b_n show the influence each independent variable X_i has on Y, assuming the other variables remain constant. Finally, the error or residual (e) is the difference between the value of Y predicted by the model and the actual value of Y, which reflects the influence of other variables not included in the model or random variation.

3. RESULTS AND DISCUSSION

3.1 Morphology Of Hampala Fish

The results of this study reveal the unique morphological characteristics of *Hampala* fish. These fish boast a distinctive flattened body shape protected by scales. Their subterminal mouth is protractile, and their body color, a silvery hue, is more intense on the dorsal part, with a slightly brighter abdomen (Makmur *et al.* 2014). Specifically, *Hampala* fish sport a black spot between their dorsal and pelvic fins, which fades as they mature. Their fins are reddish, with the tips of the dorsal and caudal fins black, and they feature a cigar-shaped caudal fin (Roesma *et al.* 2018). *Hampala* fish exhibit distinct differences between males and females. Male *Hampala* fish typically have a slimmer body, while females have a more rounded belly and a blunt mouth shape. Males are characterized by their brighter color and single genital hole, while females have two genital holes (Afriansyah *et al.* 2023).

This study revealed significant variation in the morphometrical measurements of the *Hampala* fish, particularly body weight, which had the highest coefficient of variation (CV) of 0.56. This high variation indicates a large variability among individuals, which poses a challenge in accurately predicting body weight. Some parameters such as eye diameter and ventral fin length, have low variability, making them less relevant for use as primary predictors of body weight. In contrast, total length, standard length, and maximum body height with more moderate CVs (around 0.18-0.20) showed strong potential in influencing fish body weight. Neto *et al.* (2012) found that one of the parameters that influenced fish body weight the most was body height (BH). However, the variables with higher direct influence were head length (HL) and body width (BW). Although BH is important, other variables such as HL should be taken into account together for more accurate estimation. Therefore, despite variations in morphometric influence, body length and body height remain strong predictors in estimating fish body weight.

Table 1. Descriptive statistics of body weight (g) and morphometrical traits (mm) in male *Hampala* Barb fish (*Hampala macrolepidota*)

| Parameters | Mean | SD | CV | Minimum | Maximum |
|------------------------|--------|-------|------|---------|---------|
| Total length | 263.24 | 48.91 | 0.19 | 131.00 | 380.00 |
| Standard length | 205.81 | 37.90 | 0.18 | 102.00 | 300.00 |
| Snout length | 19.70 | 3.71 | 0.19 | 9.16 | 29.49 |
| Head length | 62.01 | 11.21 | 0.18 | 32.27 | 88.72 |
| Pre-ventral fin length | 58.65 | 10.58 | 0.18 | 29.52 | 78.98 |
| Pre-anal length | 106.47 | 23.31 | 0.22 | 51.07 | 182.61 |

| | | | | | |
|------------------------|--------|--------|------|-------|--------|
| Eye diameter | 11.56 | 1.56 | 0.14 | 7.52 | 14.45 |
| Pre-orbital length | 35.04 | 8.38 | 0.24 | 23.13 | 60.94 |
| Head height | 40.35 | 7.47 | 0.19 | 21.83 | 58.38 |
| Pre-dorsal length | 110.01 | 21.68 | 0.20 | 55.13 | 163.00 |
| Dorsal fin length | 28.81 | 6.17 | 0.21 | 14.48 | 42.56 |
| Post back distance | 75.40 | 14.82 | 0.20 | 38.16 | 107.67 |
| Dorsal fin height | 46.50 | 8.64 | 0.19 | 20.37 | 67.66 |
| Pelvic fin height | 10.55 | 2.22 | 0.21 | 4.91 | 15.61 |
| Pectoral fin length | 38.99 | 7.82 | 0.20 | 17.97 | 53.47 |
| Ventral fin length | 9.69 | 1.61 | 0.17 | 5.22 | 13.76 |
| Ventral fin height | 34.35 | 6.14 | 0.18 | 17.76 | 50.02 |
| Ventral anal distance | 43.80 | 8.96 | 0.20 | 22.29 | 63.07 |
| Anal fin length | 17.18 | 3.04 | 0.18 | 10.28 | 22.97 |
| Anal fin height | 34.81 | 6.47 | 0.19 | 18.30 | 48.46 |
| Caudal peduncle length | 39.03 | 8.56 | 0.22 | 20.96 | 62.51 |
| Maximum body height | 64.95 | 13.23 | 0.20 | 34.28 | 98.23 |
| Caudal length | 30.30 | 6.51 | 0.21 | 14.60 | 45.09 |
| Caudal peduncle height | 58.98 | 10.88 | 0.18 | 31.62 | 81.40 |
| Caudal height | 30.58 | 6.56 | 0.21 | 14.64 | 45.77 |
| Body width | 32.99 | 6.37 | 0.19 | 17.95 | 46.91 |
| Body weight | 245.24 | 136.54 | 0.56 | 30.92 | 700.00 |

SD: standard deviation; CV: coefficient of variation;

Body length, both total and standard, and maximum height are essential indicators in describing the overall physical size of the fish. Total length (mean 263.24 mm) and maximum height (mean 64.95 mm) are directly related to body volume and mass, affecting fish weight. Other parameters, such as caudal peduncle length and dorsal fin length, although not directly correlated with body weight, still reflect essential aspects of the fish's physical condition and swimming ability, which can affect the fish's access to food and growth. Waters *et al.* (2016), states that body parameters such as total length and standard length, along with body depth, are critical for describing the relationship of fish size to weight. Morphometric traits such as head length, pre-pelvic distance and post-dorsal length also contribute to the understanding of growth dynamics and morphological variation between species, although they do not directly affect body weight. These findings are in line with the results of Jiang *et al.* (2022), showed that maximum body depth and total length are the main predictors of fish body weight due to their influence on body volume and mass. Integrating these insights provides a broader understanding of morphometric relationships in the prediction of fish body weight, which reinforces the importance of size-related parameters.

3.2 Environmental Parameters

The results illustrate that the waters of the Kampar River ecosystem have unique and dynamic characteristics. The temperature of the Kampar River waters during the study was obtained in the range of 26-27 °C. The results of this study are similar to research conducted with a temperature range of 26-27 Peronita *et al.* (2022), which describes these waters in a stable condition but relatively low compared to the temperature of tropical waters in general, which ranges from 28-32 °C. Meanwhile, the pH of the water tends to be acidic, with a value of 5, which illustrates that the waters are under much pressure from organic matter entering the water body; the optimum pH for aquatic organisms is 7-8 (Champasri *et al.* 2021). The condition of dissolved oxygen (DO) obtained ranged from 3.2-3.9 mg/L. The DO concentration obtained is still in good condition and can be tolerated by aquatic biota, but indeed, the results obtained are not in optimal conditions in supporting the survival of living

things (Maulidya 2022); this emphasizes that there is an input of organic matter entering the water body to cause low DO used for the process of breaking down organic matter by microorganisms.

The Kampar River waters' brightness ranged from 20-34 cm, the optimum condition of water brightness is >2 m with a minimum limit of 30-40 cm (DeBreving dan Rompas 2013). The brightness of this water is very dependent on the ability of sunlight penetration to penetrate the waters; waters with low brightness are generally described as having a reasonably large suspended particle condition; this can be influenced by sedimentation, aquatic substrates, and waste entering the water body. On the other hand, the CO₂ conditions, ranging from 9.9 to 15.9, further accentuate the acidic conditions and indicate an ongoing decomposition process: This concentration of CO₂, although relatively high, is still within the conditions that aquatic organisms can tolerate (Melisa *et al.* 2021). A high level of biological activity characterizes the overall environmental condition of the Kampar River. However, the significant pressure from human activities seriously threatens the ecosystem's biodiversity, leading to a decline in water quality.

3.3 Linear Regression Model

The morphometric analysis of *Hampala* fish (*Hampala macrolepidota*) utilized regression models to identify the factors that most influence fish body weight. Including predictor variables in each model led to a notable improvement in prediction accuracy across the four models (A to D) (Table 2). Model D emerged as the most effective of the four, with the highest R² (0.95) and the lowest SE (31.62). These findings suggest that the four variables in Model D offer the most accurate description of fish body weight. However, it is crucial to consider the potential for overfitting in overly complex models. This study underscores the importance of selecting the correct variables to accurately and effectively assess fish morphometrics, particularly in species with complex body characteristics. Such an approach aids in understanding fish biometric dynamics and provides a solid foundation for conservation efforts and population management of aquatic species.

Table 2. The best linear regression models for predicting body weight (dependent variable) in male *Hampala* Barb fish (*Hampala macrolepidota*) based on selected morphometrical traits (independent variables)

| Model | Equation | R ² | SE |
|-------|--|----------------|-------|
| A | $Y = 9.87X_1 - 395.64$ | 0.91 | 40.60 |
| B | $Y = 6.26X_1 + 2.33X_2 - 417.44$ | 0.93 | 37.50 |
| C | $Y = 5.95X_1 + 4.55X_2 - 4.41X_3 - 383.41$ | 0.93 | 34.91 |
| D | $Y = 6.76X_1 + 6.76X_2 - 4.84X_3 - 5.14X_4 - 350.23$ | 0.95 | 31.62 |

Y: body weight; X₁: maximum body height; X₂: pre-dorsal length; X₃: pre-ventral fin length; X₄: caudal peduncle height; R²: coefficient of determination; SE: standard error of regression

The regression graphic shows the observation points close to the regression line with R² = 0.91 and indicating the regression model is very good for predicting body weight of fish (Figure 3). The closeness of the observation points to the regression line reflects that the model predictions are close to the actual value. In addition, the value of R² = 0.91 indicated that about 91% of the variation in the dependent variable (body weight) can be explained by the independent variables (maximum body height) in the model. Therefore, the remaining 9% is caused by other factors outside the model. This result shows the accuracy of the regression model for describing the relationship between body weight and morphometrical measurements in *Hampala* fish. Previous studies have shown a strong relationship between morphometric parameters and body weight in *Hampala* fish. Afriansyah *et al.* (2023), found that a regression model with R² of 0.89 was effective for predicting body weight based on

total body length. Meanwhile, Herawati *et al.* (2023), reported similar results, where body length was linearly related to body weight, indicating the high predictive ability of this model. These findings support the results of the current study with an R^2 value of 0.91, indicating high accuracy in describing the relationship between body weight and morphometric measurements, particularly maximum body height.

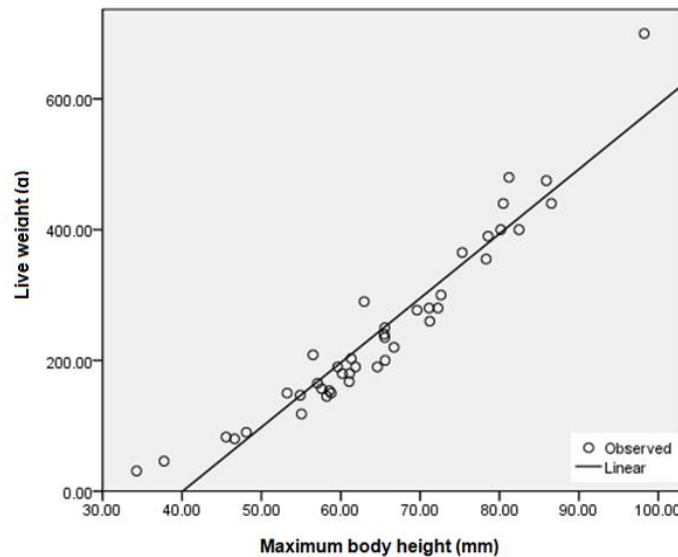


Figure 3. The linear regression plots in the Model A ($R^2=0.91$) for male *Hampala* Barb fish (*Hampala macrolepidota*)

4. CONCLUSION

The body weight of *Hampala* fish can be predicted with morphometrical measurements accurately. The maximum body height able to influence the body weight of *Hampala* fish with the R^2 value of 0.91. Overall morphometrical measurements of maximum body height, pre-dorsal length, pre-ventral fin length and caudal peduncle height can describe the body weight of *Hampala* fish with $R^2 = 0.95$.

COMPETING INTERESTS DISCLAIMER:

Authors have declared that they have no known competing financial interests OR non-financial interests OR personal relationships that could have appeared to influence the work reported in this paper.

REFERENCES

1. Azmi Afriansyah, Muslim Muslim, Reno Irawan. 2023. Sexual dimorphism, length-weight relationship, and condition factors of *Hampala* ampalong (Bleeker, 1852) from Kalong Floodplain, Ogan Komering Ilir Regency. *Int J Sci Res Arch.* 10(1):666–674. doi:10.30574/ijrsra.2023.10.1.0800.

2. Champasri C, Phetlum S, Pornchoo C. 2021. Diverse activities and biochemical properties of amylase and proteases from six freshwater fish species. *Sci Rep.* 11(1):1–11. doi:10.1038/s41598-021-85258-7.
3. DeBreving ZM, Rompas RJ. 2013. Physico-Chemical Quality of Water in the Cultivation Areas of Kaima, Eris and Toulimembet Villages, Minahasa Regency, North Sulawesi Province. *e-Journal of Aquaculture.* 1(2):38–42. doi:10.35800/bdp.1.2.2013.1914.
- 4 . Herawati T, Agung MUK, Yustiati A, Suwartapradja OS, Sukono. 2023. Characteristics of Meristics, Morphometrics, and Analysis of Cytochrome Oxidase Gen Fragment Subunit 1 (Co1) *Hampala Barb (Hampala Sp)* from Jatigede Reservoir, Sumedang, West Java, Indonesia. *J Surv Fish Sci.* 10(1):2396–2406.
5. Herawati T, Yustiati A, Nurhayatia A. 2022. Growth Patterns and Reproduction of *Hampala Barb (Hampala macrolepidota)* Kuhl and Van Hasselt 1823 in Jatigede Reservoir, West Java Indonesia. *Indones J Limnol.* 3(2):66–75. doi:10.51264/inajl.v3i2.33.
6. Herlan H, Wulandari TNM. 2021. POPULATION DYNAMICS OF SEBARAU FISH (*Hampala macrolepidota*) IN LAKE RANAU, SOUTH SUMATERA AND LAMPUNG PROVINCES. *J Glob Sustain Agric.* 1(1):35. doi:10.32502/jgsa.v1i1.3102.
7. Jiang C, Wang W, Wang M, Pauly D. 2022. Length-Weight Relationships and Other Morphological Traits of Fishes in the Mangrove of Hainan, China. *Fishes.* 7(5):1–7. doi:10.3390/fishes7050238.
8. Kerzérho V, Azaïs F, Bernard S, Bonhommeau S, Brisset B, De Knyff L, Julien M, Renovell M, Rouyer T, Saraux C, et al. 2023. Multilinear Regression Analysis between Local Bioimpedance Spectroscopy and Fish Morphological Parameters. *Fishes.* 8(2):1–16. doi:10.3390/fishes8020088.
9. Makmur S, Arfiati D, Bintoro G, Ekawati AW. 2014. Morphological, Meristic Characteristics and mtDNA Analysis of *Hampala Fish (Hampala macrolepidota)* Kuhl & Van Hasselt 1823) from Ranau Lake, Indonesia. *J Biodivers Environ Sci.* 5(2):447–455. <http://www.innspub.net> .
10. Maulidya AL. 2022. Growth patterns, condition factors and diversity of dominant fish species in the upstream area, Ciliwung river basin (das), West Java. Thesis., ready to publish.
11. Melisa E, Siregar AS, Rukayah S. 2021. COMPOSITION AND NICHE EXTENSION OF THE FOOD FISH (*Hampala macrolepidota* C.V.1823) IN PB. SOEDIRMAN RESERVOIR, BANJARNEGARA, CENTRAL JAVA. *Florea J Biol and Its Learning.* 8(2):69. doi:10.25273/florea.v8i2.11049.
12. Neto RVR, de Freitas RTF, Serafini MA, Costa AC, Freato TA, Rosa PV, Allaman IB. 2012. Interrelationships between morphometric variables and rounded fish body yields evaluated by path analysis. *Rev Bras Zootec.* 41(7):1576–1582. doi:10.1590/S1516-35982012000700004.
13. Peronita V, Hadinata FW, Trismiyarto RE, . J, Widodo AB, . I. 2022. Native and Invasive Fish Resources in the River Mengkiang, Sanggau Regency, West Kalimantan. *ACROPORA J Marine and Fisheries Science Papua.* 5(1). doi:10.31957/acr.v5i1.2270.
14. Risdawati R, Dahelmi D, Nurdin J, Syandri H. 2020. Bioecological aspects of *hampala macrolepidota* in Lake Singkarak, West Sumatera, Indonesia. *AAFL Bioflux.* 13(2):893– 901.
15. Roesma DI, Syaifullah S, Rahmadhani D. 2018. Morphological analysis of *Hampala macrolepidota* fish (Kuhl & Van Hasselt, 1823) and *Hampala sp* from Lake Singkarak and Lake Maninjau, Indonesia. *Pros 10th Fish Seminar and Community Congress 5th Indonesian Ichthyology Cibinong.*(1):13–25. doi:10.5281/zenodo.3413462.
16. Waters C, Prabakaran E, Thompson J, Samuel D, Road D. 2016. A Study on Length -Weight Relationships and Morphometric Characteristics of Fish Species Belonging to Three Different Families in. *August:261–264.*

UNDER PEER REVIEW