

## Differentiating biological roles of some organic amendments on some parameters for sandy and clay soils cultivated with lettuce (*Lactuca sativa L.*) and final yield

### ABSTRACT

Lettuce (*Lactuca sativa L.*) was planted in pot tests through 2020–2021 and 2021–2022 years in a randomized complete block design (RCBD) including with nine treatments using soils from Ismailia and Giza. Treatments included usage of potassium humate (KH), vinasse (Vin), and olive mill waste (OMW) as replacements for the recommended mineral fertilizers. Effects of these alternatives on chemical, biological and physical characteristics for both lettuce and soil after harvest. The combination using OMW, Vin and KH with mineral fertilizers (NPK) in equal quantities (50%) produced the highest yields. As for Giza soil, compared with 100% NPK, the yield increased by 1.7, 1.6 and 1.6 folds using 50% NPK combined with either 50% OMW, Vin and KH, respectively. On the other hand, in Ismailia soil either 50% Vin and 50% OMW with 50% NPK achieved yield of 1.8 and 1.65 folds that of 100 % NPK. Addition of 50% OMW, Vin recorded the best mean values of all tested, all parameters and improved that the vigorous growth plants and increasing the total yield of curds besides enhancing yield and its components compared to the other treatments or the control and at the same time save and reduce mineral fertilizer recommendation of Lettuce.

Keywords: organic fertilizer, olive mill waste wastes, vinasse, k-humate, oxidoreductase enzyme, lettuce (*Lactuca sativa L.*), yield

### Introduction

The Global Environment Facility (1) reported that soil nutrient reserves were reduced due to soil organic matter deficiency, of which the Egyptian soil had experienced significant depletion due to mineralization and fertilizer use. In Egypt, two types of agricultural lands were reported; clay soil found in the Delta and the Nile Valley and sandy soils as reclaimed lands in the desert. Both poor farming practices and changing climatic scenarios affected more than 75% of Earth's land surface that resulted in salinized, eroded and low organic matter soils (2).

Comment [SA1]: Please reduce the introduction content

e :[2HE]Comment

:[3HE]Comment

Comment [SA4]: Please rearrange the introduction structure. This looks like massive content. You need to focus on the concentrated vinasse, which is an industrial by-product. How its benefits and constraints. Why use different soil textures, **biological roles, and lectures?** Please proceed to the introduction part.

The effective management of chemical fertilizer can solve the environmental issue of how to dispose of agro-industrial residue and significantly contribute to boosting and maintaining national food security **(3 and 4)**.

Organic fertilization was studied in many researches as an indispensable alternative to inorganic forms and proved its reliability. One potential solution to decrease the usage of chemical fertilizers is to use organic additions derived from recycling organic waste. Due to the low clay content, sandy soils exhibited little shrinkage or expansion characteristics **(5)**. The use of organic supplements in sandy soils was found to be hindered by the issue of frequent turnover, since the decomposition rate was fast and the additional organic materials were often mineralized within short cropping seasons **(6)**. Also, using organic fertilizers exceeded availability of nutrients it contained as by increasing soil porosity, aeration and maintaining soil moisture, as mentioned by **(7)**.

Olive oil production is an essential global agroindustry, especially in Mediterranean countries. Around 750 million productive olive trees cover approximately 10 million hectares and produce about 2.5 million tons of olive oil. More than 90 % of them were produced in the Mediterranean region **(8)**. The processes of olive oil extraction produce 20 % of olive oil as a product, beside both 30 % of moist solid waste (65 % moisture) called Pomace or Jift **(9)** and 50 % liquid waste called olive mill wastewater (OMW), or Zibar, as a byproduct. Pomace is a mixture of olive paste and stones that remains after olive pressing **(10)**. According to **(11)**, the majority of the produced olive pomace is regarded as an energy source. Pomace is a key part of organic manures, which provide nutrients, enhance soil aggregation, and promote microbial diversity **(12)**.

Vinasse is regarded as a byproduct of the production of sugar. It stands for the residues from the fermentation of molasses. Vinasse is now regarded as an ecologically friendly source of organic fertilizers for the agriculture industry **(13)**. The composition of liquid vinasse is characterized by a high content of major ions and organic compounds, along with significant amounts of plant macronutrients like iron, copper, magnesium, manganese, phosphorus, and potassium **(14 and 15)**. Benefits of using vinasse in fertigation systems include increased crop productivity and soil fertility **(16 and 17)** stated that the use of vinasse in agriculture resulted in a substantial increase in nutrient content, improved the soil quality of degraded land and boosted crop yields.

According to (18), humic acids positively affected the growth and metabolic activity of plants. (19) clarified the role of using K-Humate as soil conditioner and growth promoter for plants, where it reduced leaching of macro and micronutrients while improving soil structure and increase its water retention. Humic acid (HA) has a substantial impact on the physical, chemical, and biological properties of soil, including its texture, structure, ability to hold water, ability to exchange ions, pH, soil carbon content, enzyme activity, nitrogen cycle, and nutrient availability. The impacts of HA on crop development, plant hormone production, nutrient intake and absorption, yield, and protein synthesis were highlighted in many researches in the review done by (20).

Humic acid had changed the composition of the soil by raising its electrical conductivity, porosity, and density while decreasing its acidity and increasing its density which improved its hydraulic properties(21).

The effectiveness of applying soil amendments including OMW, vinasse, and potassium humate varied widely depending on the land use, soil type, and ecosystems globally. Extra or intracellular enzymes played an important role in maintaining clay and sandy ecosystem quality functional diversity, and nutrient cycling (22). Enzyme activities are a promising measure of soil quality because they respond swiftly to soil management and fertilization strategies. Soil microorganisms, as main sources for enzymatic activity in soil, are essential to the decomposition of organic matter, nutrient cycling, soil fertilization and development of soil structure because they share in production of soil organic carbon, which boosts soil fertility and water-retaining capacity (23 and 24). Soil enzymes are an important parameter in carbon sequestration and soil nutrient dynamics(25). Soil dehydrogenases represent oxidoreductase enzymes that do not accumulate extracellularly in soil but occur inside microbial cells linked to their oxidation-reduction processes and indicate overall soil microbial activity, as they do share in biological oxidation of soil organic matter (OM) upon which their activities are found proportional to microbial biomass in soil (26).

On the other hand, plants developed many adaptation mechanisms, including antioxidant defense systems like Peroxidase (POD) and Catalase (CAT). In order to protect the roots and support the plants during stress, the POD and CAT reduce reactive oxygen species by employing a variety of substrates as electron donors (27).

Lettuce (*Lactuca sativa* L.) is grown all over the world and is considered a winter cash crop for Egyptian farmers (28). Organic fertilizer did mitigate heavy metals in soil that did benefit lettuce yield over chemical fertilizers (29).

The current work aims to investigate the potentiality of partial replacement for mineral fertilizers with the three previously stated organic byproducts as additives on the growth and yield of lettuce grown in a clayey and sandy soils, as well as some of their chemical, physical and biological properties.

### Materials and Methods

The current research was conducted at the Agriculture Research Center over two consecutive seasons (2020/2021 and 2021/2022) to examine the impact of olive mill waste (OMW), vinasse (Vin), and potassium humate (KH) as soil nutrients on vegetative development, fresh weight, head diameter, number of lettuce leaves, Photosynthesis pigments and chemical components of Lettuce (*Lactuca sativa* L.) as well as enzyme activity.

**Surface soil samples** (0-30 cm) were collected from both Agricultural Research Center - Giza governorate (clay soil) and Ismailia agricultural stations - Agricultural Research Center (sandy soil) to represent two different textured soils.

**Organic fertilizer:** KH was obtained from the Agricultural Research Center (ARC) at Giza governorate, Egypt. OMW was obtained from Olive Oil Production unit (OOP) at the Horticultural Research Institute, Agricultural Research Center (ARC), Giza governorate, Egypt. Vin was obtained from Hawamdia Sugar and Distillation Company, Egypt.

### Experimental design

The current pot experiment was randomized complete block design. The pot experiments included Giza (Clay) and Ismailia (Sandy) soils that had been distributed individually in pots with size capacity of 10 kg soil where only one lettuce transplant was cultivated individually in each pot. Uniform size seedlings of Lettuce seedlings (*Lactuca sativa* L.) of 40 days old were brought from Horticulture Research Institute at ARC- Giza governorate. They were transplanted during the second week of September in the two growing seasons into the aforementioned pots at a rate of one seedling/pot.

The NPK fertilization was followed after the recommendation of Agricultural Extension Office – Ministry of Agriculture – Egypt, at rates of 150: 45: 65 kg/ha as N: P<sub>2</sub>O<sub>5</sub>: K<sub>2</sub>O, respectively, as mentioned by (30). NPK was applied as ammonium nitrate (33%N),

**Comment [SA5]:** Please summarize and rearrange, since some of them were repeated. You may use time-line sequence as a guideline for writing.

**Comment [SA6]:** olive pomace, vinasse, and potassium humate as soil nutrients: Why are you interested in these?? Please introduce it in the introduction.

calcium super phosphate (15.5% P<sub>2</sub>O<sub>5</sub>) and potassium (48% K<sub>2</sub>O) equivalent to 63, 8 and 23 Kg/fed of NPK, respectively. Calcium super phosphate was added once to soil combinations in each pot before transplantation, while either of ammonium nitrate and potassium sulfate was added as half dose at a time after 15 and 30 days of plantation. After harvest, both lettuce and soil samples were collected for determination of yield parameters, chemical and biochemical properties. The remaining agricultural procedures were executed in accordance with the prescribed techniques for lettuce cultivation(31). The three types of organic fertilizers were applied individually in irrigation water (fertigation) either as 100% or 50% of recommended dose (5m<sup>3</sup>fed<sup>-1</sup> each of OMW, Vinand kH). However, the control was added at 100% of the recommended NPK dose According to the recommendations of Egyptian Ministry of Agriculture, plants were fertilized with no added organic fertilizer and were planned as shown in Table 1.

**Table 1: The layout of the experimental design**

Treatment	NPK%	Organic Fertilizer %	Treatment symbol
Control	100	0	T1
Olive mill waste	0	100	T2
	50	50	T3
Vinasse	0	100	T4
	50	50	T5
K-humate	0	100	T6
	50	50	T7

The other agricultural activities were implemented in accordance with the prescribed procedures for cultivating lettuce (31). After harvest, both lettuce and soil samples were collected for determination of yield parameters, chemical and biochemical properties.

#### **Chemical characteristics of soil**

Random soil samples were obtained from the experimental soils. then, the samples underwent air-drying, and were then crushed and sieved using a 2.0mm sieve. Following that, the soil samples underwent chemical and physical analysis, according to the defined methodologies specified by(32) and(33). The objective of these investigations was to ascertain the many chemical and physical characteristics of the soil. An electrical conductivity meter was used to test the electrical conductivity (EC) of the soil paste extract(34). The soil pH was determined by measuring the pH of a 1:2.5 soil to water suspension using a pH meter, as per the specified method of (35). In a soil paste extract the

presence of soluble carbonates and bicarbonates, Calcium and magnesium, the concentration of sodium and potassium and Chloride concentration were measured according to (32). Sulphate was calculated by subtracting total summation of total determined soluble anions from summation of total soluble cations. The organic matter was determined by (36). Cations and anions were determined to have a complete knowledge about the experimental conditions (37).

### **Organic fertilizers analysis**

Three fertilizers (OMW, Vin, and KH) were analyzed as following: pH, electrical conductivity (EC), The contents of organic matter. Potassium (K), and phosphorus (P) were estimated using Atomic Absorption Spectrophotometer according to (38). The Kjeldahl method was used to calculate total nitrogen (T.N).

### **Vegetative growth characteristics**

Various traits were assessed by randomly selecting sets of three plants from each experimental pot: vegetative growth, fresh weight, head diameter, number of lettuce leaves, chlorophyll II, carotenoids, TSS% and NPK of lettuce leaves. The plant leaf was then dried at 70°C until it reached a consistent weight, from which the dry weight per plant was calculated.

### **Enzyme activities**

Assessment of soil and plant biological activities pertaining to enzyme activity in the soil rhizosphere and fresh plant. Biological activity was assessed in soil samples collected from the rhizospheres of lettuce plants. 105 days post-planting.

A 0.5g sample was well mixed with 10 ml of cold phosphate buffer (50 mM, pH 7). The homogenates were subjected to centrifugation at a speed of 4000 revolutions per minute (rpm) at a temperature of 20°C for a duration of 20 minutes. The liquid portion, known as the supernatant, was used as a raw extract for the enzymatic test. Reagents used in the following assays were prepared in the same previously indicated buffer.

Peroxidase activity (EC 1.11.1.7) was determined using methylene blue assay (39). A single unit of peroxidase was determined as the quantity of enzyme necessary to oxidize 1.0 µmol of methylene blue during one minute.

Catalase activity (EC 1.11.1.6) included measuring the degradation of H<sub>2</sub>O<sub>2</sub> using UV detection at 240nm, as stated by (40). The method stages were executed in accordance with (41). The units of catalase were determined by using a molar absorbance coefficient of

43.6 for H<sub>2</sub>O<sub>2</sub>. A single unit of catalase was determined as the quantity of enzyme needed to break down 1.0 μmol of H<sub>2</sub>O<sub>2</sub> per minute.

#### **Soil enzymes activities**

The activity of dehydrogenase (DeH-ase) (EC 1.1.1.) was measured using the tri-phenyl tetra-zolium chloride (TTC) technique as described in (42). A single unit of dehydrogenase was determined as the quantity of enzyme needed to catalyze the hydrolysis of TTC, resulting in the formation of 1.0 μmol of tri-phenyl formazan (TPF) per hour (μmol g<sup>-1</sup>h<sup>-1</sup>).

Para nitro phenyl phosphate was used to evaluate phosphatase activity (P-ase) (E.C 3.1.3) in accordance with (43). Phosphatase activity of one unit was defined as the amount of enzyme required to release 1 μg of p-nitro phenol hydrolyze per hour.

Nitrogenase activity (E.C.1.18.6.1) was measured by acetylene reduction assay as described by

(44).

#### **Statistical analysis procedure**

The tests and analytical results were reproduced a minimum of three times, and the data reported represents the average values. The collected findings underwent a one-way analysis of variance (ANOVA) to establish the significance between treatments. The kind of analysis used depends on the variables that impacted the experiment. CoStat software was used for this study(45).

### **Results and discussion**

Analytical results represented in Table (2) characterized soil samples gathered from Giza (A) and Ismailia (B) soils. Based on their physical analysis, texture classifications of soils (A) and (B) were found to be clay and sandy soils, respectively. Both soils had alkaline pH of 8±0.2, while EC value of soil(A) was nearly double that of (B). Organic matter, CaCO<sub>3</sub>, soluble anions (HCO<sub>3</sub>, Cl, SO<sub>4</sub>), soluble cations (Ca, Mg, Na), macronutrients (N, P) and micronutrients (Fe, Mn) in soil (A) surpassed that of soil (B).

**Table 2: Chemical and physical properties of soil before plantation**

Analyte	O.M (%)	CaCO <sub>3</sub> (mg. Kg <sup>-1</sup> )	pH	EC (dS. M <sup>-1</sup> )	Coarse sand %	Fine sand %	Silt %	Clay %
Clay soil	7.50	29.0	8.03	2.75	7.45	20.85	30.44	41.26
Sandy Soil	6.2	18.5	7.95	1.25	12.80	73.20	8.30	5.70
Analyte	Soluble Anions (mmol. l <sup>-1</sup> )			Soluble Cations (mmol. l <sup>-1</sup> )				
	(HCO <sub>3</sub> ) <sup>-1</sup>	(Cl) <sup>-1</sup>	(SO <sub>4</sub> ) <sup>-2</sup>	(K) <sup>+1</sup>	(Ca) <sup>+2</sup>	(Mg) <sup>+2</sup>	(Na) <sup>+1</sup>	
Clay soil	5.65	12.33	9.55	0.87	10.90	5.66	10.07	
Sandy Soil	1.54	3.22	7.74	0.88	3.85	2.90	4.87	
Analyte	Available Macronutrients (mg.Kg <sup>-1</sup> )			Available Micronutrients (mg.Kg <sup>-1</sup> )				
	N	P	K	Cu	Fe	Mn	Zn	
Clay soil	38.55	5.20	178.00	0.40	3.40	2.33	0.65	
Sandy Soil	33.50	3.96	185.30	0.38	1.49	0.89	0.55	

Comment [SA7]: The format of Table 2 seems to strang

The formate changed :[38]Comment

Clay Soil form Giza (A), Sandy Soil from Ismailia (B)

Organic wastes gathered from different agro-industrial activities were analyzed mainly for their NPK contents which were expected to partially substitute NPK mineral fertilization in lettuce cultivation. The three types of organic wastes used as organic fertilizers had considerable amount of organic matter (OM%), while with insufficient NPK contents compared to required doses for plantation, as shown in Table (3). Vin and OMW were found to be acidic but KH was alkaline, while Vin had the highest EC value among organic wastes.

**Table 3: Analysis of agro-industrial wastes used as organic fertilizes**

Organic fertilizer	pH	EC	O.M%	N%	P%	K%
Olive pomace	5.9	2.1	60.3	0.95	0.28	1.28
vinasse	4.3	12	35	0.23	0.35	5.46
K-humate	8.1	4	21.5	0.52	0.00	6.25

Comment [SA9]: If you want to show the color, please take note and explain.

The colored horizontal graph columns are expressing the magnitude of results individually under each parameter

Substituting mineral NPK with organic fertilizers diminish the share of mineral NPK forms which were easily available for plant. Add to that, NPK contents in organic fertilizers were mostly in complex organic forms that would be released slowly depending on soil rhizosphere conditions including microbial activities. Low pH characterizing Vin and OMW used as soil amendments resulted in a slight increment in the insoluble acid fraction (46 ; and 47).

The application of vinasse often resulted in pH values decreasing due to the acidic influence of vinasse. (48). Noticeably, all chemical, biological and physical analysis carried

out for plant and soil samples were attributed only to their residual characterization at harvest.

### Leaf Enzymes

Enzymatic activities measured in lettuce leaves at harvest, as illustrated in Figure (1), elucidated residual oxidation reduction activities that might have been affected by their nutritional states.

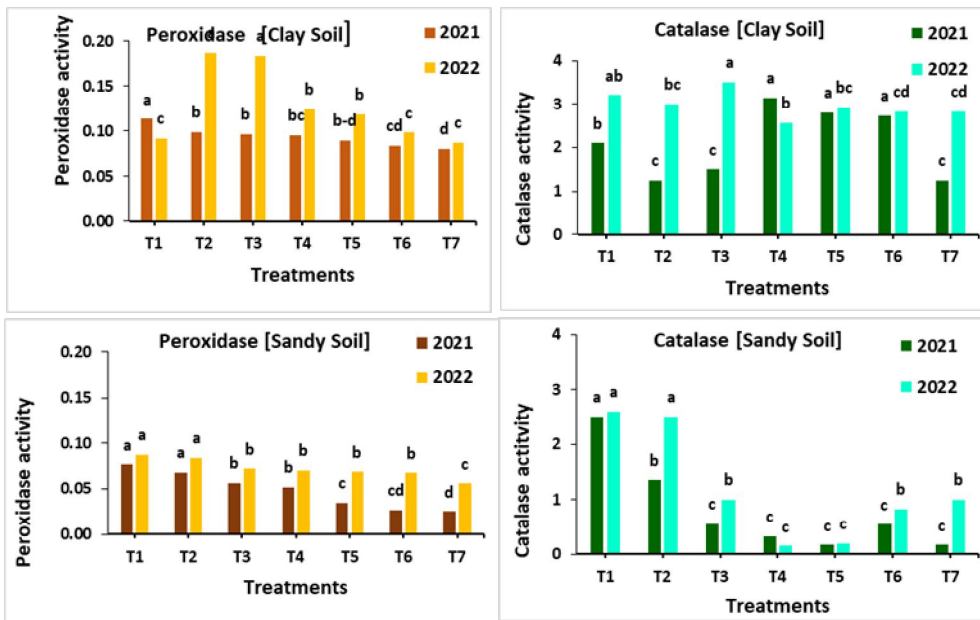


Figure (1): Catalase and Peroxidase activities in lettuce plant at harvest, where  $LSD_{0.05}$  for Clay soil peroxidase [0.011/0.015] and catalase [0.466/0.305], while for sandy soil peroxidase [0.009/0.009] and catalase [0.362/0.496] in 2021/2022 seasons, respectively. [T1: control, T2 & T3: OMW 100 & 50%, T4 & T5: Vinasse 100 & 50%, T6 & T7: K-Humate 100 & 50%]

Among all treatments, both catalase and peroxidase activities in lettuce harvested from clay soil were mostly higher than those from sandy soil. Added to that, enzymatic activities were higher in second season than in first season from lettuce cultivated in both types of soils, that might be attributed to the accumulation of organic fertilizers used and consequently to any changes that had happened in the rhizosphere biological contents. In both

types of soils and within most treatment cases, both peroxidase and catalase activities increased in the second season compared to the first.

Catalase and peroxidase antioxidant enzymes increased in lettuce at early stage of growth while they decreased at the latter stage (harvest) in response to stress(49). Consequently, in the present work, the level of catalase and peroxidase activities at harvest time would be much less than that at the early stage of growth. Never the less, the variations in catalase and peroxidase activities correlated to applying different organic fertilizers could be considered as crucial evaluation for lettuce status in response.

Variations in catalase activities measured in lettuce sampled from clay soil treated with organic fertilizers compared to control in the first and second seasons were difficult to describe as a fixed trait. For instance, catalase activities from OMW 100% and 50 % treatments were lower than control in the first season and increased in the second season, in the same time decreasing OMW share increased catalase activities proving that the OMW was beneficial for plant causing decrease in stress (catalase). On the contrary, catalase activities from Vin (50&100%)and KH (100%) were higher than that in control in the first season and all Vin and KH (50 & 100%) were lower than that in control in the second season. In lettuce sampled from sandy soil, catalase activities in all organic fertilization treatments were lower than that in control in both seasons, being the most minimum in vinasse treatment. Catalase in case of OMW and KH treatments increased in the second season and with less treatment sharing (50%).

Peroxidase and catalase had an adequate role in quenching ROS resulting from oxidative stress(50). The formation of reactive oxygen species ROS needed to be removed boosted the plant to form those complex antioxidant enzymes (49).

### **Plant analysis**

In Tables (4) and (5) the photosynthesis pigments, NPK, fresh weight (Yield), head diameter and number of lettuce leaves results in lettuce leaves at harvest were shown, while in Table (5) their correlations were calculated.

As shown in Table (4), the effect of lowering the share of organic fertilizers on analytic level in leaves at harvest varied according to organic fertilizer and soil types. TSS contents in lettuce increased parallel to higher Vin and KH fertilizer shares in clay soil, while increased OMW and Vin shares in sandy soil led to decrease in TSS content.



Table (4): Photosynthesis pigments ( $\mu\text{g/g}$  FW), TSS% and NPK (%) in lettuce leaves at harvest

Soil / year	Treat.	TSS%		Chlorophyll		Carotenoids		N		P		K	
		mean $\pm$ se	rank	mean $\pm$ se	rank	mean $\pm$ se	rank	mean $\pm$ se	rank	mean $\pm$ se	rank	mean $\pm$ se	rank
Clay Soil 2021	T1	0.10 $\pm$ 0.01	b	0.43 $\pm$ 0.02	de	0.47 $\pm$ 0.01	c	3.87 $\pm$ 0.13	a	0.12 $\pm$ 0.02	b	12.67 $\pm$ 0.17	a
	T2	0.13 $\pm$ 0.00	a	0.53 $\pm$ 0.04	cd	0.39 $\pm$ 0.03	cd	1.39 $\pm$ 0.06	d	0.15 $\pm$ 0.01	a	10.13 $\pm$ 0.13	b
	T3	0.12 $\pm$ 0.01	a	0.93 $\pm$ 0.04	b	0.72 $\pm$ 0.02	b	1.87 $\pm$ 0.13	c	0.15 $\pm$ 0.01	a	9.33 $\pm$ 0.09	c
	T4	0.12 $\pm$ 0.00	a	0.55 $\pm$ 0.03	c	0.31 $\pm$ 0.04	de	1.47 $\pm$ 0.03	d	0.15 $\pm$ 0.01	a	8.63 $\pm$ 0.19	d
	T5	0.11 $\pm$ 0.01	ab	0.33 $\pm$ 0.02	e	0.25 $\pm$ 0.03	e	1.12 $\pm$ 0.01	d	0.15 $\pm$ 0.00	a	8.40 $\pm$ 0.10	d
	T6	0.09 $\pm$ 0.00	b	0.87 $\pm$ 0.04	b	0.87 $\pm$ 0.04	a	2.17 $\pm$ 0.17	c	0.14 $\pm$ 0.00	ab	7.33 $\pm$ 0.08	e
	T7	0.07 $\pm$ 0.01	c	1.09 $\pm$ 0.06	a	0.34 $\pm$ 0.03	de	3.13 $\pm$ 0.12	b	0.13 $\pm$ 0.00	ab	6.00 $\pm$ 0.18	f
LSD			0.02		0.12		0.09		0.32		0.03		0.42
Clay Soil 2022	T1	0.08 $\pm$ 0.01	b	0.55 $\pm$ 0.03	c	0.61 $\pm$ 0.05	c	3.10 $\pm$ 0.05	ab	0.09 $\pm$ 0.00	d	12.83 $\pm$ 0.17	a
	T2	0.12 $\pm$ 0.01	ab	0.59 $\pm$ 0.06	c	0.42 $\pm$ 0.04	d	1.55 $\pm$ 0.05	c	0.12 $\pm$ 0.01	c	10.67 $\pm$ 0.17	b
	T3	0.13 $\pm$ 0.01	ab	1.10 $\pm$ 0.07	ab	0.77 $\pm$ 0.02	b	1.93 $\pm$ 0.07	bc	0.13 $\pm$ 0.01	bc	9.96 $\pm$ 0.04	c
	T4	0.10 $\pm$ 0.03	ab	0.59 $\pm$ 0.05	c	0.39 $\pm$ 0.03	d	1.86 $\pm$ 0.07	bc	0.14 $\pm$ 0.00	b	8.93 $\pm$ 0.18	d
	T5	0.14 $\pm$ 0.03	a	0.47 $\pm$ 0.04	c	0.38 $\pm$ 0.01	d	2.73 $\pm$ 0.15	a-c	0.14 $\pm$ 0.00	bc	8.77 $\pm$ 0.06	d
	T6	0.09 $\pm$ 0.02	ab	0.93 $\pm$ 0.04	b	0.90 $\pm$ 0.03	a	2.98 $\pm$ 0.03	ab	0.15 $\pm$ 0.00	a	7.77 $\pm$ 0.04	e
	T7	0.08 $\pm$ 0.01	b	1.23 $\pm$ 0.13	a	0.42 $\pm$ 0.02	d	3.65 $\pm$ 0.17	a	0.16 $\pm$ 0.00	a	6.23 $\pm$ 0.04	f
LSD			0.06		0.20		0.09		0.93		0.01		0.35
Sandy Soil 2021	T1	2.65 $\pm$ 0.49	ab	0.41 $\pm$ 0.06	e	0.56 $\pm$ 0.02	a	2.68 $\pm$ 0.17	ab	0.10 $\pm$ 0.01	b	5.90 $\pm$ 0.10	a
	T2	2.11 $\pm$ 0.45	b	0.17 $\pm$ 0.00	d	0.23 $\pm$ 0.02	e	2.07 $\pm$ 0.07	a-c	0.13 $\pm$ 0.00	a	5.73 $\pm$ 0.15	ab
	T3	3.80 $\pm$ 0.52	a	0.66 $\pm$ 0.05	b	0.43 $\pm$ 0.04	b	2.25 $\pm$ 0.14	a-c	0.12 $\pm$ 0.01	a	5.50 $\pm$ 0.29	a-c
	T4	2.34 $\pm$ 0.37	b	0.43 $\pm$ 0.04	c	0.30 $\pm$ 0.02	de	1.61 $\pm$ 0.10	c	0.12 $\pm$ 0.00	a	5.10 $\pm$ 0.10	cd
	T5	3.39 $\pm$ 0.48	ab	0.47 $\pm$ 0.02	c	0.32 $\pm$ 0.01	cd	2.94 $\pm$ 0.07	a	0.11 $\pm$ 0.01	ab	4.83 $\pm$ 0.17	d
	T6	3.87 $\pm$ 0.50	a	0.76 $\pm$ 0.02	b	0.40 $\pm$ 0.03	bc	2.60 $\pm$ 0.05	ab	0.09 $\pm$ 0.00	b	4.13 $\pm$ 0.13	e
	T7	2.96 $\pm$ 0.40	ab	0.93 $\pm$ 0.02	a	0.33 $\pm$ 0.01	cd	2.00 $\pm$ 0.29	bc	0.07 $\pm$ 0.01	c	5.33 $\pm$ 0.17	bc
LSD			1.40		0.11		0.07		0.60		0.02		0.39
Sandy Soil 2022	T1	3.12 $\pm$ 0.35	bc	0.49 $\pm$ 0.04	c	0.60 $\pm$ 0.02	a	2.93 $\pm$ 0.07	a	0.08 $\pm$ 0.01	b	5.97 $\pm$ 0.03	a
	T2	3.29 $\pm$ 0.68	bc	0.21 $\pm$ 0.01	d	0.31 $\pm$ 0.02	e	2.67 $\pm$ 0.17	a	0.12 $\pm$ 0.01	ab	5.93 $\pm$ 0.07	a
	T3	3.19 $\pm$ 0.40	bc	0.73 $\pm$ 0.04	b	0.51 $\pm$ 0.01	b	2.87 $\pm$ 0.13	a	0.13 $\pm$ 0.01	ab	5.67 $\pm$ 0.17	ab
	T4	1.97 $\pm$ 0.25	c	0.17 $\pm$ 0.02	c	0.34 $\pm$ 0.04	de	1.83 $\pm$ 0.09	b	0.10 $\pm$ 0.03	ab	5.57 $\pm$ 0.07	b
	T5	3.86 $\pm$ 0.26	b	0.49 $\pm$ 0.03	c	0.39 $\pm$ 0.01	cd	3.13 $\pm$ 0.13	a	0.14 $\pm$ 0.03	a	4.97 $\pm$ 0.03	c
	T6	3.92 $\pm$ 0.52	b	0.85 $\pm$ 0.04	b	0.41 $\pm$ 0.01	c	2.88 $\pm$ 0.12	a	0.09 $\pm$ 0.02	ab	4.97 $\pm$ 0.03	c
	T7	5.87 $\pm$ 0.49	a	1.13 $\pm$ 0.08	a	0.42 $\pm$ 0.02	c	1.88 $\pm$ 0.09	b	0.08 $\pm$ 0.01	b	4.93 $\pm$ 0.10	a
LSD			1.35		0.13		0.06		0.46		0.06		0.26

T1: control, T2 & T3: OMW 100 & 50%, T4 & T5: Vinasse 100 & 50%, T6 & T7: K-Humate 100 & 50%

The colored horizontal graph columns are expressing the magnitude of results individually under each parameter

Table (5): Fresh weight (Yield), head diameter and number of lettuce leaves at harvest

Soil / year	Treat.	leaves No.				head diameter (cm)				fresh weight (g/plant)			
		mean original	±	se	rank	mean original	±	se	rank	mean original	±	se	rank
Clay Soil 2021	T1	25.0	±	0.29	d	1.50	±	0.29	b	483	±	4	c
	T2	27.7	±	0.15	b	2.20	±	0.12	a	327	±	8	e
	T3	27.0	±	0.29	c	1.40	±	0.06	b	851	±	5	a
	T4	19.7	±	0.15	f	1.40	±	0.12	b	228	±	10	f
	T5	23.7	±	0.15	e	1.73	±	0.15	ab	764	±	7	b
	T6	27.7	±	0.15	b	1.50	±	0.12	b	422	±	4	d
	T7	29.3	±	0.15	a	1.50	±	0.06	b	705	±	9	b
LSD					0.37			0.55					25.5
Clay Soil 2022	T1	28.0	±	0.29	c	1.80	±	0.06	bc	510	±	6	c
	T2	29.0	±	0.29	b	2.93	±	0.07	a	381	±	10	e
	T3	30.0	±	0.29	a	1.63	±	0.07	cd	857	±	12	a
	T4	24.5	±	0.29	d	1.33	±	0.09	e	228	±	10	f
	T5	24.3	±	0.20	d	1.90	±	0.10	b	775	±	8	b
	T6	28.4	±	0.23	bc	1.50	±	0.00	de	438	±	10	d
	T7	29.8	±	0.17	a	1.60	±	0.06	cd	784	±	8	b
LSD					0.77			0.21					28.4
Sandy Soil 2021	T1	23.7	±	3.34	ab	1.24	±	0.12	bc	467	±	3	c
	T2	15.7	±	0.15	c	1.00	±	0.24	c	384	±	8	d
	T3	24.0	±	0.29	ab	2.00	±	0.19	a	744	±	12	b
	T4	15.0	±	0.29	c	1.50	±	0.24	a-c	354	±	7	e
	T5	20.0	±	0.58	b	1.73	±	0.12	ab	823	±	12	a
	T6	10.0	±	0.29	d	1.50	±	0.09	a-c	395	±	4	d
	T7	25.0	±	0.29	a	1.50	±	0.05	a-c	782	±	9	b
LSD					3.85			0.61					31.8
Sandy Soil 2022	T1	17.5	±	0.29	d	1.83	±	0.09	bc	475	±	9	c
	T2	17.5	±	0.29	d	1.10	±	0.10	e	388	±	8	de
	T3	23.8	±	0.15	b	2.50	±	0.12	a	793	±	6	b
	T4	16.5	±	0.29	e	2.23	±	0.15	ab	365	±	6	e
	T5	21.6	±	0.30	c	1.72	±	0.12	cd	842	±	13	a
	T6	11.8	±	0.17	f	1.33	±	0.09	de	406	±	7	d
	T7	26.4	±	0.10	a	1.73	±	0.34	cd	794	±	14	e
LSD					0.72			0.50					37.1

T1: control, T2 & T3: OMW 100 & 50%, T4 & T5: Vinasse 100 & 50%, T6 & T7: K-Humate 100 & 50%

The colored horizontal graph columns are expressing the magnitude of results individually under each parameter

Worthy to notice that, the increase of chlorophyll and carotenoids in cultivated lettuce could be recognized in second season than in the first among all treatments in both soil types exceeding that of control in most cases.

On the other hand, catalase activities in leaves were negatively correlated to chlorophyll contents while positively correlated to carotenoid contents in most cases of lettuce harvested from both soil types, as shown in Table (6).

Putting in consideration that the level of chlorophyll contents in any plant leaves are negative signs for their health states when facing any type of stress while carotenoids are positive signs for those states. So, whenever the catalase increased as a positive response for stress the carotenoids are positively correlated, while vice versa with chlorophyll. Lettuce chlorophyll content the use of several organic fertilizers, including molasses and vinasse, enhanced the crop (51 and 52). The increase in pigments responsible for photosynthesis could be attributed to a successful tolerance mechanism in lettuce (53).

#### **Measurements of Nitrogen, Phosphorous and Potassium in plants (N P K)**

Vinasse is beneficial because it contains chelated organic micro and macro nutrients, which are essential for plant growth, and because it may increase the bioavailability of NPK, which is essential for photosynthesis pigment synthesis (as mentioned by (54)). Previous studies reported that leaf nutrient concentrations had increased when agro-industrial waste were applied to soil cultivated with several crops due to increased availability of nutrients in their rhizosphere (55 and 56). Nitrogen decreased in leaf when treated by Vin and OMW than control, which could be clarified by N consumption in formation of head lettuce (57).

In clay soil, the lower share of both KH and OMW used increased chlorophyll and nitrogen while decreased the potassium contents, while they were all increased by decreasing shares in all organic fertilizer types used in sandy soil.

On the other hand, substituting chemical with organic fertilization did increase not only soil organic matter but also the total nitrogen and decreased EC that was positively correlated to increase in final lettuce yield. In the present study(58), addition of OMW might have shared in decreasing EC of clay soil Increased OMW and vinasse did increase their effect of acidity and OM content in both soil types.

### Correlations in leaf analysis and yield

In correlations described in Table (6), based on results in Tables (4) and (5), data were held to emphasize if head diameter or leave number were well correlated with final fresh weight. In sandy soil, both head diameter and leave number were positively correlated to final fresh weight (yield), while in clay soil the leave number was the main contributor in fresh weight yield.

Table (6): Correlations between analyzed parameters in lettuce leaves at harvest

Soil/ year	Analyte	Catalase	TSS%	Chlorophyll	Carotenoids	N	P	K
Clay Soil 2021	Peroxidase	0,0	0,5	-0,6	-0,1	0,3	-0,3	1,0
	Catalase		0,1	-0,5	0,0	-0,3	0,1	0,0
	TSS%			-0,5	-0,1	-0,7	0,6	0,5
	Chlorophyll				0,5	0,3	0,0	-0,6
	Carotenoids					0,1	-0,1	0,0
	N						-0,9	0,3
Clay Soil 2022	Peroxidase	0,5	0,7	-0,1	0,0	-0,9	-0,1	0,3
	Catalase		0,3	0,2	0,4	-0,1	-0,4	0,5
	TSS%			-0,3	-0,2	-0,6	0,0	0,1
	Chlorophyll				0,4	0,4	0,6	-0,6
	Carotenoids					0,1	0,1	0,1
	N						0,2	-0,4
Sandy Soil 2021	Peroxidase	0,8	-0,5	-0,8	0,3	-0,1	0,6	0,5
	Catalase		-0,1	-0,5	0,6	0,2	0,1	0,6
	TSS%			0,6	0,1	0,5	-0,3	-0,6
	Chlorophyll				0,2	0,0	-0,8	-0,4
	Carotenoids					0,5	-0,3	0,2
	N						-0,2	-0,2
Sandy Soil 2022	Peroxidase	0,7	-0,6	-0,8	0,3	0,5	0,1	0,9
	Catalase		0,0	-0,4	0,3	0,3	-0,3	0,7
	TSS%			0,7	0,0	-0,1	-0,3	-0,6
	Chlorophyll				0,3	-0,3	-0,5	-0,7
	Carotenoids					0,4	-0,3	0,3
	N						0,5	0,1
	P							0,0

POD: Peroxidase, CAT: Catalase, TSS: total soluble salts, Chlor.: Chlorophyll, Carot.: Carotenoids, HD: Head diameter, negative and positive correlations are expressed in yellow and green columns, respectively.

The positive correlation of leave no. with chlorophyll and carotenoids contents in lettuce from both types of soil and seasons was similarly noted by work of(49). Worthy to mention that, the positive effect of both chlorophyll and carotenoids on fresh weight (yield) at harvest appearing as positive correlations, obviously in which the chlorophyll had the upper hand than carotenoids beside it had more impact on yield in sandy soil than in clay soil (more positively correlated).

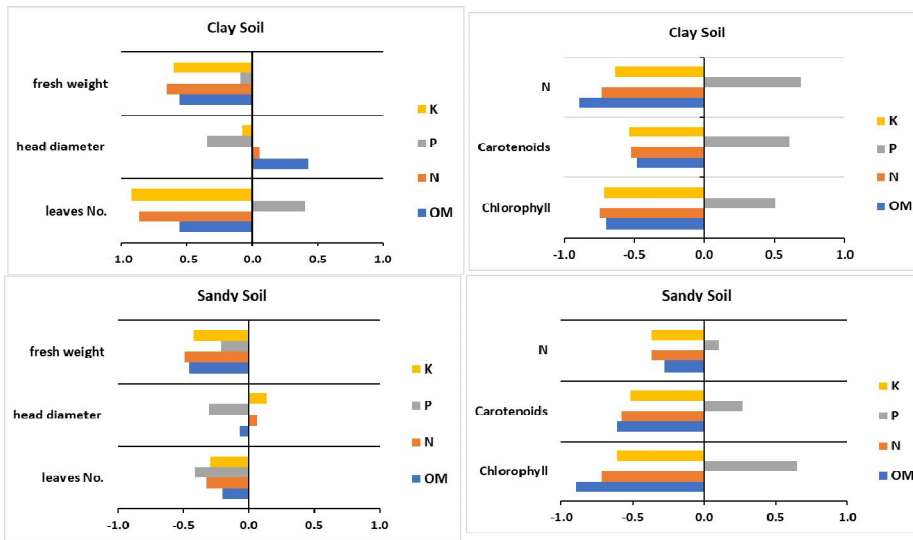


Figure (2): Correlating analytical contents in fertilizers used with those in lettuce and yield parameters measured.

In case we were comparing organic fertilizers effect depending on their [NPK and OM] contents, we could get correlations shown in Figure (2), putting in regard that the more fertilizer we add the less mineral we put. In clay soil the head diameters were positively correlated with increments in all organic fertilizer additions from 50 to 100%, based on their organic matter, N and P contents, while this relation was absent in sandy soil. As in clay soil, important nutritional contents were said to be captured and slowly released for the benefit of planted lettuce, while on the contrary the sandy soil loses so much nutrients (59).

The unusual increase in lettuce yield and analytical results may be attributed to undetermined analytical characteristics. Beneficial characteristics include low pH, Cu, Zn, Fe, K, and low pH in OMW, while negative characteristics include high EC, phenols, heavy metals, phenols and high pH in vinasse. The addition of more fertilizer may positively affect yield due to beneficial characteristics rather than its NPK or OM content(60).

Studies have shown a positive relationship between nitrogen in leaves and chlorophyll concentration, with 50% vinasse having the strongest impact on growth and yield. The notable disparity in chlorophyll content in sandy soil may be due to accelerated nitrogen mineralization of fertilizer derived from olive mill water and the elevated nitrogen needs during rapid growth(61). Multiple investigations have shown a positive relationship between nitrogen in leaves and chlorophyll concentration (62). Using 50% vinasse seemed to have the strongest impact on growth and yield(63).

Furthermore, the notable disparity in chlorophyll content in sandy soil may be attributed to the accelerated nitrogen mineralization of fertilizer derived from OMW, as compared to other treatments, and the elevated nitrogen need of plants during the rapid growth period(64).Application of vinasse along with chemical fertilizers before lettuce plantation provides nitrogen with higher potassium and phosphorus (65 and 66).Plant nutrient content was enhanced by applying vinasse(67).

## Soil analysis

The residual enzyme activities in soil at harvest in response to soil and organic fertilizer types used and their cultivation seasons shown in Table (7) and as correlated to fertilizer analytical contents were well represented in Figure (3). These enzyme activities were representing part of soil biological characters after harvest, which gave considerable expectations for future impacts of using organic fertilizers in soil ready conditions for the next plantation season.

Table (7): Soil enzymes activities at harvest

Soil / year	Treat.	DeHase			N-ase			P-ase		
		mean original	± se	rank	mean original	± se	rank	mean original	± se	rank
Clay Soil 2021	T1	2.81	± 0.12	e	40.17	± 0.31	e	14.53	± 2.12	b
	T2	33.56	± 0.30	b	67.83	± 0.38	b	23.83	± 2.67	a
	T3	22.83	± 0.51	c	60.73	± 0.45	c	20.73	± 3.22	ab
	T4	33.45	± 0.46	b	33.83	± 0.11	f	24.73	± 1.88	a
	T5	35.00	± 0.29	a	82.67	± 0.38	a	24.38	± 2.55	a
	T6	12.52	± 0.24	d	46.33	± 0.34	d	21.93	± 2.95	ab
	T7	21.86	± 0.07	c	68.17	± 0.56	b	24.90	± 1.21	a
<b>LSD</b>				<b>0.97</b>		<b>1.16</b>			<b>7.44</b>	
Clay Soil 2022	T1	3.93	± 0.23	f	40.33	± 0.24	e	13.50	± 1.68	b
	T2	34.18	± 0.29	b	67.83	± 0.46	b	22.87	± 3.90	a
	T3	23.90	± 0.08	c	60.67	± 0.41	c	21.43	± 3.70	ab
	T4	36.47	± 0.29	a	33.73	± 0.41	f	25.23	± 2.26	a
	T5	35.83	± 0.27	a	82.33	± 0.24	a	23.90	± 1.82	a
	T6	13.83	± 0.17	e	46.17	± 0.44	d	22.57	± 2.42	a
	T7	22.80	± 0.20	d	68.10	± 0.17	b	25.13	± 2.68	a
<b>LSD</b>			<b>0.70</b>		<b>1.08</b>			<b>8.35</b>		
Sandy Soil 2021	T1	1.79	± 0.12	d	16.90	± 9.77	e	8.67	± 0.76	c
	T2	16.90	± 0.49	b	23.23	± 13.43	b	15.17	± 1.36	a
	T3	20.37	± 0.88	a	21.17	± 12.24	c	13.63	± 1.25	ab
	T4	12.57	± 0.90	c	24.95	± 14.42	a	11.63	± 1.59	bc
	T5	18.43	± 0.54	ab	20.17	± 11.66	d	13.90	± 0.96	ab
	T6	12.63	± 0.43	c	21.67	± 12.52	c	12.00	± 1.10	abc
	T7	18.53	± 0.40	ab	22.50	± 13.01	b	12.87	± 0.67	ab
<b>LSD</b>			<b>1.80</b>		<b>0.74</b>			<b>3.43</b>		
Sandy Soil 2022	T1	3.07	± 0.56	e	16.90	± 0.37	f	7.90	± 0.74	e
	T2	18.30	± 0.55	b	23.17	± 0.20	b	16.00	± 0.64	a
	T3	20.67	± 0.44	a	21.10	± 0.15	d	14.17	± 0.61	bc
	T4	13.83	± 0.46	c	24.90	± 0.19	a	12.57	± 0.67	cd
	T5	19.67	± 0.63	ab	20.20	± 0.21	e	14.73	± 0.47	ab
	T6	11.17	± 0.62	d	21.73	± 0.39	cd	12.11	± 0.52	d
	T7	14.33	± 0.63	c	22.53	± 0.29	bc	13.17	± 0.46	cd
<b>LSD</b>			<b>1.70</b>		<b>0.83</b>			<b>1.79</b>		

T1: control, T2 & T3: OMW 100 & 50%, T4 & T5: Vinasse 100 & 50%, T6 & T7: K-Humate 100 & 50%

The colored horizontal graph columns are expressing the magnitude of results individually under each parameter

For instance, both phosphatase and nitrogenase were positively responding to nitrogen, phosphorous and organic matter contents in organic fertilizers while potassium was reversely correlated to phosphatase and dehydrogenase activities in sandy soil. On the other hand, the organic matter and phosphorous contents were beneficial for dehydrogenase activities, while nitrogenase activities were negatively correlated to potassium, phosphorous and organic matter contents in organic fertilizers used in clay soil. Phosphatase activities in clay soil was positively affected to potassium and phosphorous contents in organic fertilizers.

Phosphorous form in organic fertilizers were stated to be mostly in an organic form that needs increased microorganism phosphatase activities to be released for plant benefit in both soil types (68).

Figure (3): Correlation between soil residual enzymes activities and analytical contents of fertilizers used

Soil enzyme activity is a sensitive indicator of changes in soil quality due to management and land use changes. Soil additives decompose, releasing phenolic compounds, reducing biological activity. Organic matter treatment, like food waste compost, increases enzyme activity in lettuce growing, (69). Soil enzyme activity is a sensitive indicator of changes in soil quality due to management and land use changes. Soil additives decompose, releasing phenolic compounds, reducing biological activity. Organic matter treatment, like food waste compost, increases enzyme activity in lettuce growing (70 and 71). Soil organic matter treatment, such as food waste compost, increased soil enzyme activity in lettuce growing, according to another research (72). Potassium humate as an organic matter promoted microorganisms in soil (73).

### Conclusion

This study imposed valuable insights about impact of partial substituting NPK mineral fertilization with diverse organic sources individually or in combination and permutation on the growth and yield of lettuce seedlings (*Lactuca sativa* L.). Applying OMW, Vin and KH to soil presented a viable way to improve organic farming practices while promoting resource and residue recycling in agricultural ecosystems. The utilization of OMW, Vin and KH along with reduced NPK fertilization by 50% was found to be the most effective in achieving desired

**Comment [SA10]:** Soil enzyme activity is a sensitive indicator of changes in soil quality due to management and land use changes. Soil additives decompose, releasing phenolic compounds, reducing biological activity. Organic matter treatment, like food waste compost, increases enzyme activity in lettuce growing.

growth while minimizing reliance on the mineral fertilizer by 50%. Besides, the chosen treatments were beneficial for enzymatic activities relying on microbial community in soil rhizosphere. Intended researches in future could focus more on the synergistic impacts of using those organic sources on physical, chemical and biological characteristics of soil. Added to that, comprehensive understanding of their agricultural implications in enhancing water and nutrient use efficiently.

### References

- 1 GEF, 2008. Resource mobilization and the status of funding of activities related to land degradation. *J Chem Inf Model* 53: 287.
- 2 Talukder B., G.W. vanLoon, K.W. Hipel and J. Orbinski , 2021 COVID-19's implications on agri-food systems and human health in Bangladesh. *Curr. Res. Environ.*
- 3 De Chaves M.G., A.M.Venturini and L.F.Merloti , 2020. Combined Use of Vinasse and Nitrogen as Fertilizers Affects Nitrification, Ammonification, and Denitrification by Prokaryotes. *Front Soil Sci* 1:746745. <https://doi.org/10.3389/fsoil>.
- 4 Abd El-Hady M.E., M. A. El-Temsah, M. E. El-Gabry Y. A., Abdelkader, M. A., S. H. A. Abd Alwahed, E. Salama, N. A. A. Morsi, N. M. Taha, A. M. Saad and Y. M. Abd-Elkrem, 2024. Combined Vinasse and Mineral NPK Fertilizer Affect Physio-Biochemical, Root, and Yield Characters of Faba Bean (*vicia faba* L.) Genotypes Grown on Saline Soil. *Journal of Soil Science and Plant Nutrition*. Volume 24, 1. <https://doi.org/10.1007/s42729-024-01743-8>
- 5 Khan, T.O., 2018. Sandy Soils, Management of Soil Problems, 37-65.
- 6 Baiamonte, G., G.Crescimanno, F.Parrino and D.De Pasquale, 2019. Effect of biochar on the physical and structural properties of a sandy soil, *Catena* 175, 294-303.
- 7 Ismail, D. S., and M. H. Obeid, 2023. Impact of Organic fertilizer and Silica with Potassium Humate Acid on Growth and Yield of Two Lettuce Varieties. *IOP Conference Series*:
- 8 Fraga, H.,M. Moriondo ,L. Leolini and J.A.Santos, 2021. Mediterranean olive orchards under climate change: a review of future impacts and adaptation strategies. *Agronomy*. <https://doi.org/10.3390/agronomy11010056>.
- 9 Ochando-Pulido, J.M., R.González-Hernández and A. Martinez-Ferez,2018. On the effect of the operating parameters for two-phase olive-oil washing wastewater combined phenolic compounds recovery and reclamation by novel ion exchange resins. *Sep. Purif. Technol.* 195, 50–59. <https://doi.org/10.1016/J.SEPPUR.2017.11.075>.
- 10 Sygouni, V., A.G.Pantziaros, I.C.Iakovides , E.Sfetsa , P.I.Bogdou , E.A.Christoforou and C.A. Paraskeva,2019. Treatment of two-phase olive mill wastewater and recovery of

- phenolic compounds using membrane technology. *Membranes* 2019 (9), 27. <https://doi.org/10.3390/MEMBRANES9020027>.
- 11 Khdair, A. and G.Abu-Rumman, 2020. Sustainable environmental management and valorization options for olive mill byproducts in the Middle East and North Africa (MENA) region. *Processes*. <https://doi.org/10.3390/PR8060671>.
  - 12 Seleem, M.,N. Khalafallah , R. Zuhair , A. M. Ghoneim , M. El-Sharkawy and E. Mahmoud, 2022. Effect of integration of poultry manure and vinasse on the abundance and diversity of soil fauna, soil fertility index, and barley (*Hordeum aestivum* L.) growth in calcareous soils, *BMC Plant Biology*, 22:492
  - 13 Hoarau J., Y.Caro, I. Grondin and T. Petit ,2018. Sugarcane vinasseprocessing:Toward a status shift from waste to valuable resource. A Review. *J Water Process Eng* 24:11–25
  - 14 Oldroyd G.E. and R. Dixon ,2014. Biotechnological solutions to the nitrogenproblem. *Curr Opin Biotechnol* 26:19–24.
  - 15 Katakajwala R.,A.N. Kumar , D.Chakraborty andS.V. Mohan ,2019 . valorization of sugarcane waste: prospects of a biorefinery. In:Industrial and municipal sludge emerging concerns and scope for resource recovery, pp 47–60. Elsevier. <https://doi.org/10.1016/B978-0-12-815907-1.00003-9>
  - 16 **Cerri, B. C., L.M.Borelli and I.M.Stelutti, 2020.** Evaluation of new environmental friendly particulate soil fertilizers based on agroindustry wastes biopolymers andsugarcane vinasse. *Waste Management*.108:144–153.
  - 17 Vadivel, R, S.M. Paramjit, K.P. Suresh, S. Yogeswar, R.D.V.K. Nageshwar and N. Avinash, 2014. Significance of vinasses waste management in agriculture and environmental quality- Review. *African J. Agric. Res.* 9, 2862-2873.
  - 18 Tejada, M. and J. L. Gonzalez, 2005. Beet vinasse applied to wheat under dryland conditions affects soil properties and Yield, *Eur. J. Agron.*, 23, 336–347.
  - 19 Kumar, D., A. P.Singh, P. Raha, A.Rakshit , C. M.Singh, and P.Kishor , 2013. Potassium Humate: A Potential Soil Conditioner and Plant Growth Promoter. *International Journal of Agriculture, Environment and Biotechnology*, 6 (3), 441. <https://doi.org/10.5958/j.2230-732x.6.3.015>
  - 20 Kwame A., S. Malinda and Y. Linda, 2022. Understading the role of Humic acids on crop performance and soil health,Ampong K, Thilakaranthna MS and Gorim LY Understanding the Role of Humic Acids on Crop Performance and Soil Health. *Front. Agron.* 4:848621. doi: 10.3389/fagro.
  - 21 Abou Tahoun, A.M.M.,M.M. Abou El Enin,A.G. Macy ,M.H. Sheta, 2022. Integrative Soil Application of Humic Acid and Foliar Plant Growth Stimulants Improves Soil Properties and Wheat Yield and Quality in Nutrient Poor Sandy Soil of a Semiarid Region, *Journal of Soil Science and Plant Nutrition*<https://doi.org/10.1007/s42729-022-00851-7>.
  - 22 Sinsabaugh, R.L., M.M. Carreiro and D.A. Repert , 2002. Allocation of extracellular enzymatic activity in relation to littercomposition, N deposition, and mass loss. *Biogeochemistry* 60, 1e24.
  - 23 **Christopher, J., 2017.** Living Soils: The Role of Microorganisms in Soil Health. In *Strategic Analysis Paper; Future Directions International: Nedlands, Australia.*

- 24 Mkhinini, M., I. Boughattas, V. Alphonse, A. Livet, S. Giusti-Miller, M. Banni , and N. Bousserhine, 2020. Heavy metal accumulation and changes in soil enzymes activities and bacterial functional diversity under long-term treated wastewater irrigation in East Central region of Tunisia (Monastir governorate). *Agric. Water Manag.* 235, 106150.
- 25 Lemanowicz, J., A. Bartkowiak , A. Zielińska , I. Jaskulska, M. Rydlewska , K. Klunek and M. Polkowska, 2023. The effect of enzyme activity on carbon sequestration and the cycle of available macro- (p, k, mg) and microelements (zn, cu) in phaeozems. *Agriculture*, 13(1): 172. <https://doi.org/10.3390/agriculture13010172>
- 26 Wolinska, A., and Z. Stepniewsk,2012. Dehydrogenase activity in the soil environment. *Dehydrogenases*. <https://doi.org/10.5772/48294>
- 27 Hafez, Y. , 2021. Alleviating the detrimental impacts of salt stress on morpho-physiological and yield characters of rice plants (*Oryza sativa* L.) using actosol. Nano-Zn and Nano-Si. *Fresenius Environ. Bull.* 29, 6882–6897.
- 28 Chen, Z., Y. Han and K. Ning, 2019. Assessing the performance of different irrigation systems on lettuce (*Lactuca sativa* L.) in the greenhouse. *PLoS ONE* 14(2): 1-18 e0209329. DOI: <https://doi.org/10.1371/journal.pone.0209329>
- 29 Hossain, M.B. and K.S. Ryu, 2017. Effects of organic and inorganic fertilizers on lettuce (*lactuca sativa* L.) and soil properties. *SAARC J. Agri.*, 15(2): 93-102.
- 30 El-Mogy , M. M. , S.M. Abdelaziz, A. W. M. Mahmoud, T. R. Elsayed, N.H. Abdel-KaderI, M.A. Mohamed, 2020. Comparative Effects of Different Organic and Inorganic Fertilisers on Soil Fertility, Plant Growth, Soil Microbial Community, and Storage Ability of Lettuce. *Agriculture (Poľnohospodárstvo)*, 66, (3): 87 – 107
- 31 El-Ghinbihi, F. H. and W. H. Mahmoud, 2007. Physiological studies on the effect of some beneficial microorganisms on lettuce plants polluted by lead *J. Agric. Sci. Mansoura Univ.*, 32 (5): 3823 – 3848.
- 32 Page, A. L., R. H. Miller and D. R. Keeney, 1982. Methods of soil analysis. Part 2. Chemical and microbiological properties. ASA Madison
- 33 Klute, A., 1986. Part 1. Physical and mineralogical methods. ASA-SSSA-Agronomy, Madison, Wisconsin USA.
- 34 Rhoades, J. D., N. A. Manteghi, P. J. Shouse, and W. J. Alves ,1989. Estimating soil-salinity from saturated soil-paste electrical-conductivity, *Soil Science Society of America Journal*, 53(2), 428-433.
- 35 Thomas, T.M. and Y.B. Devi ,2018. Soil PH: An Indicator For Availability Of Nutrients In Soil. *Agrobios Newsletter VOL. NO. XVII, ISSUE NO. 01*
- 36 Walkley, A. and I.A. Black ,1934 An examination of the Degtjareff method for determining soil organic matter and a proposed modification of the chromic acid titration method. *Soil Sci.* 37, 29-38
- 37 Jackson, M.L.,1973. *Soil Chemical Analysis*. PrinticeHall Inc. Englewood Cliffs-N.S.
- 38 Cottenie et al.,1982 Cottenie A., M. Verloo, G. Velgh, L. Kiekens and R. Camcrynck., 1982. *Chemical analysis of plant and soils*. Lab. of Analytical and Agro. State Univ. Ghent Belgium
- 39 Magalhães, A.F., A.M.G.A Tozzi,., B.H.L.N. Sales, E.G. Magalhães,., 1996. Twenty-three flavonoids from *Lonchocarpus subglaucescens*. *Phytochemistry* 42, 1459–1471.

- 40 Beers , R.F.J. and I.W. Sizer,1952. A spectrophotometric method for measuring the breakdown of hydrogen peroxide by catalase. *J Biol Chem* , 195:276–287
- 41 Pine, L., Hoffman P.S., Malcolm G. B., Benson R.F., And Keen M.G., 1984.American Society For Microbiology Determination Of Catalase, Peroxidase, And Superoxide Dismutase Within The Genus *Legionella* , *J. Clini. Micro.* , 20 (3):421-429.
- 42 Casida, L, D. Klein and T. Santoro,1964. Soil Dehydrogenase Activity. *Soil Science*, 98, 371376.
- 43 Tabatabai, M.A. and J.M. Bremner,1969. Use of p-nitro- phenyl phosphate for assay of soil phosphatase activity. *Soil Biol. Biochem.*, 1(4): 301-307.
- 44 Johnsen, K.H. and D.K. Apsley,1990. A simple method for measuring acetylene reduction of intact, nodulated black locust seedlings. *Tree Physiol.*, 9(4): 501-506.
- 45 Stern, R.D., 1991. CoStat-Statistical Software. California: CoHort Software (1989), pp. 302. *Experimental Agriculture*, 27(1): 87
- 46 Arafat, S. and Y. Abd-Elazim., 2002. Agronomic evaluation of fertilizing efficiency. Symposium no. 14. 17th WCSS, 14 – 21 August. Thailand. 1991 – 1 1991 -6.
- 47 Christofoletti, C. A., J. P. Escher, J. E. Correia , J. F. U. Marinho and C. S. Fontanetti, 2013. Sugarcane Vinasse: Environmental Implications Of Its Use. *Waste Management*, 33(12), 2752–2761.
- 48 Seddik W.M.A., M. A. Osman and M.H.M. Kenawy, 2016. Utilization of Vinasse and Feldspar as Alternative Sources of Potassium Fertilizers and Their Effect on Some Soil Properties and Crop Yield in Sandy Soils. *J. Soil Sci. and Agric. Eng., Mansoura Univ.*, Vol. 7 (9): 669 - 675, 2016.
- 49 Zhao, X., X. Sui, L. Zhao, X. Gao, J. Wang, X. Wen., and Y. Li, 2022. Morphological and Physiological Response Mechanism of Lettuce (*Lactuca Sativa L.*) to Consecutive Heat Stress. *Scientia Horticulturae*, 301, 111112.
- 50 Leitão, I., M. P. Mourato, L. Carvalho, M. C. Oliveira, M. M. Marques and L. L. Martins, 2021 . Antioxidative response of lettuce (*Lactuca sativa*) to carbamazepine-induced stress. *Environmental Science and Pollution Research*, 28(33), 45920–45932. <https://doi.org/10.1007/s11356-021-13979-3>
- 51 Santos, C.M., E.R. Gonçalves, L. Endres, T.C.A. Gomes, C.J. Jadoski, L.A. Nascimento and E.D. Santos, 2010. Photo-synthetic measurements in lettuce submitted to different agro industrial residue composting. *Pesqui. Apl. Agrotecnol.*3, 103–112.
- 52 Liu, C.W., Y. Sung, B.C. Chen, H.Y. Lai ,2014. Effects of Nitrogen Fertilizers on the Growth and Nitrate Content of Lettuce (*Lactuca sativa L.*). *Int. J. Environ. Res. Public Health*11, 4427–4440.
- 53 Deuner, C., Meneghello, G. E., Castellanos, C. I. S., Borges, C. T. and Deuner, S. , 2020. Biochemical responses in lettuce subjected to salinity and the application of purple lettuce extract. *Scientia Plena*, 16(6). <https://doi.org/10.14808/sci.plena.2020.061501>
- 54 Prnaudeau, V., N. Condom , R. Oliver , P. Cazevieuille, S. Recous , 2008. Vinasse organic matter quality and mineralization potential, as influenced by rawmaterial, fermentation and concentration processes. *Bioresource. Technol.* 99, 1553–1562.

- 55 Carvalho, L.a.,I. Meurer , C.a. Junior , C.f.Santos and P.l. Libardi ,2014. Spatial Variability Of Soil Potassium In Sugarcane Areas Subjected To The Application Of Vinasse. *Anais Da Academia Brasileira De Ciências* 86: 1999-2012.
- 56 Mansour, N.A.I. , 2018. Promising impacts of humic acid and someorganic fertilizers on yield, fruit quality and leaf mineral content of wonderful pomegranate (*PunicagranatumL.*) trees. *Egypt J Hort* 45: 105-119.
- 57 Mirdad, Z. M., 2016. Effect of N Fertigation Rates and Humic Acid on The Productivity of Crisphead Lettuce (*Lactuca sativa L.*) Grown in Sandy Soil. *Journal of Agricultural Science*, 8 (8): 1916-9760.
- 58 Hossain, M.B. and K.S. Ryu. 2017. Effects of organic and inorganic fertilizers on lettuce (*lactuca sativa L.*) and soil properties. *SAARC J. Agri.*, 15(2): 93-102.
- 59 Garbowski, T., D. Bar-Michalczyk, S. Charazińska, B. Grabowska-Polanowska, A. Kowalczyk and P. Lochyński, 2023: An overview of natural soil amendments in agriculture. *Soil Tillage Res.*, 225, 105462
- 60 El-Etr, W. M.T. and W. Z. Hassan. 2017. Effect of Potassium Humate and Bentonite on some Soil Chemical Properties under Different Rates of Nitrogen Fertilization. *J. Soil Sci. and Agric. Eng.*, Mansoura Univ., Vol. 8 (10): 539 - 544, 2017.
- 61 Diacono, M and F. Montemurro, 2015. Effectiveness of Organic Wastes as Fertilizers and Amendments in Salt-Affected Soils. *Agriculture* 5(2):221-230
- 62 Ding, L., K. J. Wang, G. M. Jiang, D. K. Biswas, H. Xu and L. F. Li, 2005. Effects of nitrogen deficiency on photosynthetic traits of maize hybrids released in different years. *Ann. Bot.* 96, 925–930. doi: 10.1093/aob/mci244.
- 63 Roig, A., M.L.Cayuela,M.A.,Sánchez-Monedero,2006. An overview on olive mill wastes and their valorisation methods. *Waste Manage.* 26(9):960-9.
- 64 Lawlor, D.W., K. Mengel and E.A. Kirkby, 2004 .Principles of plant nutrition. *Ann. Bot.* 2004, 93, 479–480.
- 65 Gómez-Muñoz, B., D.J. Hatch, R. Bol, E. Dixon and R. Garcia-Ruiz, 2011. Gross and rates of nitrogen mineralization in soil amended with composted olive mill pomace. *Rapid Commun Mass Spectrom* 25:1–7
- 66 Ali, I., Q. Zhao, K. Wu , S. Ullah , A. Iqbal ,and H. Liang, 2021. Biochar in combination with nitrogen fertilizer is a technique: to enhance physiological and morphological traits of Rice (*Oryza sativa L.*) by improving soil physio-biochemical properties. *J. Plant Growth Reg.* 1–15. doi: 10.1007/s00344-021-10454-8
- 67 Schiavon, M., D., Pizzeghello, A. Muscolo, S. Vaccaro and O. Francioso, 2010. High molecular size humic substances enhance phenylpropanoid metabolism in maize (*Zea mays L.*). *J Chem Ecol* 36(6), 662-669.se
- 68 Rawat, P., S. Das, D., Shankhdhar and S. C. Shankhdhar, 2021. Phosphate-solubilizing microorganisms: mechanism and their role in phosphate solubilization and uptake. *J. Soil Sci. Plant Nutr.* 21, 49–68. doi: 10.1007/s42729-020-00342-7
- 69 Bowles, T.M.,V. Acosta-Martínez, F. Calderón and L. E. Jackson, 2014. Soil Enzyme Activities, Microbial Communities, and Carbon and Nitrogen Availability in Organic Agroecosystems across an Intensively Managed Agricultural Landscape. *Soil Biology and Biochemistry*, 68, 252-262.

<https://doi.org/10.1016/j.soilbio.2013.10.004>

- 70 Lopez-Piñeiro, A., A. Albarrán, J.M. Rato Nunes, R. Peña and D. Cabrera, 2011. Long-term impacts of de-oiled two-phase olive mill waste on soil chemical properties, enzyme activities and productivity in an olive grove. *Soil and Tillage Research*. Volume 114, Issue 2, Pages 175 -182
- 71 Natywa, M., M. Selwet and T. Maciejewski, 2014. Effect of some agrotechnical factors on the number and activity soil microorganisms, *Fragmenta Agronomica*, 31(2), pp. 56–63.
- 72 Wojewódzki, et, P., J. Lemanowicz,, B. Debska,, S.A. Haddad, 2022. Soil Enzyme Activity Response under the Amendment of Different Types of Biochar. *Agronomy* 2022, 12, 569.
- 73 Khaled, H. and H. A. Fawy, 2011. Effect of different levels of humic acids on the nutrient content, plant growth, and soil properties under conditions of salinity. *Soil and Water Res.*, 6: 21–29.