

## Original Research Article

### Factors Influencing the Adoption of Climate Resilient Technologies in Semi-Arid Regions: Insights from NICRA in Samba District, Jammu and Kashmir [in the Shivalik Hills, India](#)

#### Abstract

Climate-induced ~~increase in temperature and reduction in rainfall has~~ [temperature increases and reduced rainfall have](#) severely threatened the ~~agriculture—agricultural~~ productivity and food security of the Indian state of Jammu and Kashmir. National Innovations Climate Resilient Agriculture (NICRA) interventions like crop rotation, soil management and ~~helps help~~ farmers adapt the technology to reduce ~~the risk of climate change~~ [climate change risk](#). Therefore, this paper examines the impact of NICRA interventions on crop yield and income of farmers in a vulnerable and semi-arid region of [the](#) Samba district of Jammu and Kashmir. The study surveyed 120 farmers ~~of in the~~ [samba-Samba](#) district of Jammu and Kashmir. The ordinary least square method has been used to analyze the data. The results show that attendance ~~to the training, having Kissan credit card and farmers experience have significantly influence the adaptation of NICRA interventions~~ [at the training, having a Kissan credit card, and farmers' experience have significantly influenced the adaptation of NICRA interventions](#). The study sheds light on [the](#) positive relation with farm income due to the adaptation of NICRA interventions. ~~Overall, our~~ [Our](#) study proposed policy-related recommendations to encourage farmers to adopt ~~the climate smart~~ [climate-smart](#) agriculture through NICRA interventions. This includes raising awareness among farmers through high-quality information and training and developing ~~the~~ climate action for the small and marginal farmers of the Samba district of Jammu and Kashmir. This study provides a foundation ~~of for~~ understanding the role of NICRA interventions in increasing ~~the~~ farm productivity and income in semi-arid regions.

**Keywords:** Adaptation, Climate change, Climate Smart Agriculture, Mitigation, Productivity, Sustainable Agriculture

JEL Codes: Q54, Q5

## INTRODUCTION

The change in climate affects food security and productivity through rising temperatures and variable rainfall across the world (Habowa et al., 2024; Kayusi, Kasulla, Malik, & Chavula, 2024; Kayusi, Kasulla, Malik, Chavula, et al., 2024). This has resulted into food insecurity, changes in livelihood, land degradation, ecosystems, and emissions of greenhouse gases (IPCC, 2019). Due to changes in the patterns of rainfall, there is an outbreak of pests that poses a significant threat to the productivity and food security (Dinesh et al., 2018). The IPCC (2022) reported that greenhouse gas concentrations in the air has been reached to an exceptional level for the last decade. It has been predicted that global temperature can rise up to 1.1 to 3.7 degree Celsius (Urban et al., 2023). Climate-smart interventions are a strategy to build against the climate change (Kayusi et al., 2024). Climate resilient technologies are enhancing the agricultural productivity and reducing the impact of greenhouse emissions gases (Aafaw and Maggio, 2016). Climate-smart agriculture has three pillars: increase productivity, enhance resilience and reduce emissions. There should be integration of policies and adoption of levels for sustainable agriculture (Lipper et al., 2014). There have been studies which explore the adoption of climate-smart practices in South Asia, focusing on perceived benefits and climate risk. The emphasis on the need for awareness and risk management strategies for resilient agriculture is very important (Arya et al., 2018). The empirical studies identify factors such as credit, education, credit access, and extension services that play an important role in enhancing the adoption level of resilient agriculture practices (Tanjea et al., 2018). There should be integration of adaptation and mitigation strategies in agricultural practices to increase productivity. There are many case studies and empirical evidences to support the benefits of climate-resilient technologies in improving the yield of crops and reducing vulnerability among farmers in India's diverse agro-climatic zones (Reddy and Syme, 2015). Given the context of Himachal Pradesh (Sharma and Singh, 2017), they explore the adoption behavior and identify the factors like access to information and institutional support that influence the farmers to take up the climate-smart practices. The role of the policy framework helped the farmers to adopt the

interventions and promote sustainable agriculture (Habowa et al., 2024). The CSA practices in Rajasthan ~~has have~~ been influenced by ~~the~~ socio-economic factors and perceived benefits. The policy support in semi-arid regions aims ~~in building to build the~~ resilience against climate change while ~~ensures ensuring the~~ sustainable agriculture (Kumar and Kumar, 2020). The CSA ~~is~~ recognized as an important tool for managing the impact of climate change and ~~climate-responsive climate-responsive~~ technologies ~~has have~~ been adopted (Rao and Mohan, 2018).

The events of extreme weather have ~~been~~ increased in Jammu and Kashmir. The agriculture sector has been enormously damaged by the variation in the weather. The Government of India through ICAR and state universities ~~have has~~ been increasing the flow of information ~~of one climate smart climate smart~~ agriculture (CSA). The National Innovations of Climate Resilience Agriculture (NICRA) is one of the ~~step steps~~ by ICAR to protect ~~farmer farmers~~ from variable weather conditions. NICRA has been working towards improved crop yield (Kayusi, Kasulla, Malik, Chavula, et al., 2024), soil management, improved seed varieties, water management, and institutional capacity building. These key NICRA interventions helped the farmers ~~for enhancing enhance the their~~ resilience in agriculture and mitigate the adverse effect of ~~the~~ climate change on crop production. In Jammu and Kashmir due to adverse climate change the NICRA

~~interventions Interventions~~ have been promoted by the Government of India. The key factors that influence the adoption of climate resilience technologies are govt. ~~support Support~~, relevant information, and training (Singh, 2013). In Himachal Pradesh, key CSA practices include the adoption of drought-resistant ~~variety varieties~~, improved irrigation ~~systems systems~~, and soil and water conservation measures (Sharma and Singh, 2017). The present paper contributes to the literature on households' adoption level of climate resilience agriculture in ~~the~~ Samba district of Jammu and Kashmir. The OLS particularly looks at the factors which affect the adoption of NICRA interventions. Adoption is a ~~long run long-run~~ process that ~~require requires~~ not only initial adoption but also the maintenance of the interventions so that farmers will mitigate the adverse ~~effect effects~~ of climate change. The findings of this study will help the ~~policy makers policy makers~~ to develop an action plan for the farmers ~~for disseminating to disseminate~~ and ~~promoting promote the~~ information ~~of on~~ climate resilience technologies.

## METHODOLOGY

### Sources of data

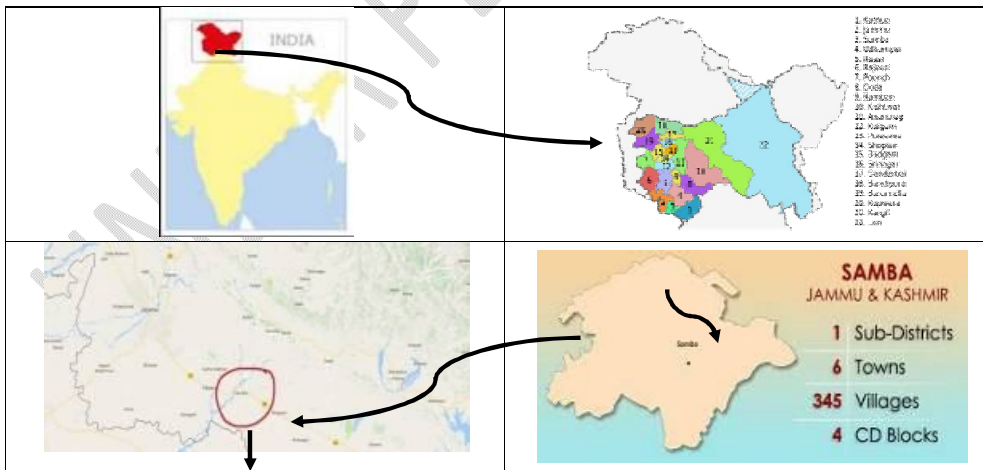
The primary survey has been conducted in [the](#) Samba district of Jammu and Kashmir. A total sample of 120 farmers has been collected from the three NICRA villages namely Khaner, Khada, and Madana in [the](#) Samba district of Jammu and Kashmir using a purposive sampling technique. The villages were selected for implementation of [the](#) National Initiative on Climate Resilient Agriculture (NICRA) Project. The village is situated at a latitude of 32° 39" North and longitude of 74° 53" East at an elevation of 335 meters above the mean sea level and it represents the true *kandibelt* of Samba plain areas and parts of Jammu, Kathua and Udhampur districts of Jammu and at a distance of about 15 km from DLRSS RakhDhiansar. The village is under Khara Madana Gram Panchayat under the Block Purmundal, teh&distt. Samba, J&K.

Formatted: Font: Not Bold

### NICRA Site:

The village '*Khaner*' is situated about 15 [kms-km](#) away from Block: Purmundal and about 40 [kms-km](#) away from teh&distt. Samba HQ. ~~Other~~ [The other](#) two villages namely Madana and Khada are adjacent to Khaner village.

**Figure 1:** Image of NICRA Villages: Khaner and Madana – Climate Resilient Agriculture Practices in Action



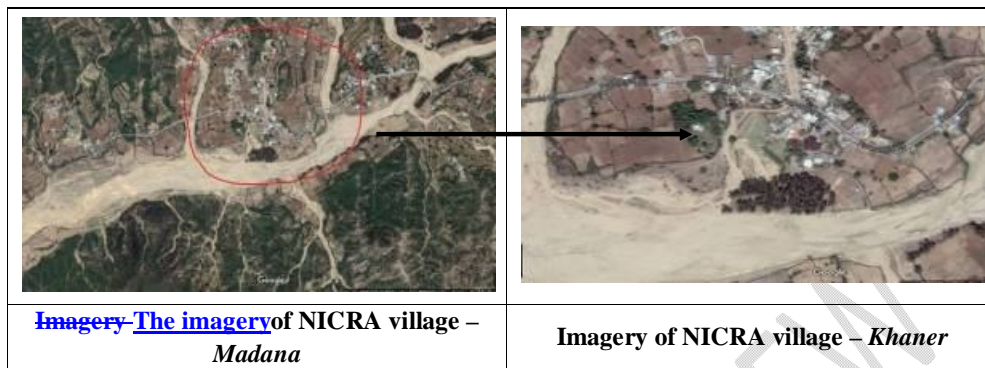


Table 1: Characteristics of the NICRA Farmers of Samba District of Jammu and Kashmir

Characteristics	Adopter	
	Number	Percentage (%)
<b>Sex</b>		
Male	110	91.66%
Female	10	8.33%
Total	120	
<b>Age</b>		
Mean	49.26	
<b>Civil Status</b>		
Married	97	83%
Unmarried	23	19.16%
Total	120	
<b>Education Qualification</b>		
No. of years of Schooling (Mean)	9.04	

Illiterate	0	0
Primary	17	14.16%
High School	96	80%
Graduation and above	7	5.83%
Total	120	

### Ordinary Least Square Regression

The adoption of NICRA interventions is measured by ~~several numbers of~~ variables like age, experience, social participation, Personal characteristics, and demographics measures.

$$DC_i = \beta_0 + \beta_1 X_{1i} + \beta_2 X_{2i} + \dots + \beta_k X_{ki} + e_i$$

Where  $DC_i$  is the dependent variable adoption of NICRA interventions by  $i^{th}$  farmer in the data,  $\beta_0$  is intercept,  $\beta_1, \beta_2, \dots, \beta_k$  are regression coefficients,  $X_1, X_2, \dots, X_k$  are independent variables and  $e_i$  is the error term.

### RESULTS AND DISCUSSION

The OLS model has been used to identify the significant factors affecting the adoption of NICRA interventions. ~~There are number of independent variables which effect~~ Several independent variables affect the adaptation of NICRA interventions which ~~helps help~~ farmers for ~~the climate smart~~ climate-smart Agriculture. The model has adjusted  $R^2$  0.64 i.e. 64% the independent variables can collectively explain the variation in the dependent variable. The factors that significantly and positively explained the adoption level of NICRA interventions are ~~training~~ training, Farmer Experience, TV as a source of information, income, and ownership of land (at a 1% significance level each), and Agricultural Extension as the source of information, KCC, Number of ~~crop-crops~~ (at 5% significance level each).

Thus, attending training programmes was likely to increase the adoption level of ~~climate resilient~~ climate-resilient agricultural practices. The positive role of the extension officers ~~was~~ also brought ~~the an~~ increase in the level of ~~the~~ adoption. TV as a source of information plays an important role in spreading the awareness of NICRA interventions. ~~As~~ TV is the main source of disseminating ~~the~~ information to the mass population. Thus, farmers were becoming aware ~~about~~ of ~~climate smart~~ climate-smart agricultural practices through television. In ~~addition~~ addition, the

farm income also plays an important role in adopting ~~the climate resilient~~ climate-resilient technologies. The Kissan Credit Card (KCC) ~~is~~ also an important factor ~~which that~~ influences ~~the~~ farmers to adopt ~~the climate resilient~~ climate-resilient interventions. Growing more than one crop also ~~increase-increases~~ the adoption as the farmers are more aware ~~about-of~~ crop diversification which is less risky than growing one crop at a time. The farmers are looking for new technologies so that they can increase their yield and income. The technological interventions have been improving the awareness, knowledge, and skills of the farmers. Our results are consistent with the previous studies that have been conducted earlier. Adaptation to ~~the~~ climate change has significantly increased farm income ~~the~~ practices like varietal change of seeds, ~~and~~ water management have ~~a~~ positive and significant impact on net farm incomes (Di Falco et al., 2011). The ~~farmers-farmers' perception-perceptions~~ regarding climate change are being influenced by access ~~of-to~~ information. ~~The services~~ Services like extension, credit, and information regarding climate change increased ~~the~~ climate resilience (Bryan et al., 2013). The positive attitude towards ~~the~~ adoption of CSA practices is significant for the farmers of Ghana (Atta-Aidoo et al., 2022). ~~The crop~~ Crop diversification also ~~increase-increases~~ the adoption of CSA practices which ~~correspond-corresponds~~ to the results (Franke et al., 2018) which shows how ~~the~~ crop diversification through ~~the~~ rotation of crops ~~enhance-enhances~~ soil fertility and ~~increase-increases~~ the resilience towards climate variability in Sub-Saharan Africa.

Table 2: OLS Regression Results: Adoption of NICRA Interventions

Variables	Coefficients	p>  Z
<b>Constant</b>	<b>-2.316</b>	<b>0.262</b>
<b>Farmers</b>		
Sex	0.231	0.563
Age	0.023	0.511
Education	0.033	0.710
Experience	1.19	0.005***
Training	2.871	0.0051***
TV as <del>a</del> source of information	1.017	0.000***

Fellow <del>farmer</del> —farmers as a source of information	0.726	0.267
Agriculture Extension as a source of information	1.467	0.028**
Internet	0.234	0.540
Income	1.135	0.0037***
KCC	2.34	0.005**
<b>Farm</b>		
Farm Size	0.087	0.367
Ownership	1.089	0.0071***
Hired Labour	0.283	0.358
Number of crops	2.271	0.000**
<b>Institutional</b>		
Social Access	-0.367	0.687
Institutional Credit Access	0.547	0.261
<b>No. of observation = 120</b>	<b>F(16,103)= 6.730</b>	<b>Prob&gt;p= 0.000</b>
<b>R<sup>2</sup> = 0.67</b>	<b>Adj. R<sup>2</sup>=0.64</b>	<b>Root MSE= 2.258</b>

**\*Significant at 10%, \*\*Significant at 5% and \*\*\*Significant at 1%**

The training has been ~~consistently consistent and~~ plays ~~an a~~ crucial role in ~~the~~ adoption of ~~climate smart climate-smart~~ interventions (Arslan et. al, 2020). Government attention should focus on providing tools, information, training, and financing to smallholder farmers in the Samba district of Jammu and Kashmir. ~~Beyond~~

~~this~~ Thus, it is essential to raise awareness among farmers to protect their food security and sovereignty. The most important thing is to implement agricultural practices based on adaptation capacity, which requires, firstly, increased investments to optimize resources; increase productivity; improve ~~the~~ quality; reduce costs; preserve the environment, and add value to products.

## CONCLUSION

The study focused on the farmers' adoption level of climate resilience technologies which helps them to enhance their crop yield and income ~~in~~ the villages of Samba district of Jammu and Kashmir. There are ~~several number of~~ factors that positively and significantly affect the adoption of NICRA interventions. The training and information to the farmers played an important role ~~for in~~ the initial adoption of climate resilient practices. The role of the Extension officers also has ~~a~~ significant effect on ~~farmers farmers for~~ adoption of practices ~~which that~~ help them to increase the productivity of the crops. The study highlights the importance of quality and quantity of information at the right time to the farmers. Extension activities play a significant role in promoting ~~the~~ new technologies and interventions ~~towards for~~ farmers. The ~~climate-resilient climate-resilient~~ interventions ~~upgrade-upgraded~~ the knowledge skills and speeded the process of adoption level among farmers. The Government can utilize the power of mass media like TV, ~~newspaper newspapers~~, or posters to create awareness among farmers regarding ~~climate-resilient climate-resilient~~ interventions. The KCC ~~provide-provides~~ timely and adequate credit to the farmers which ~~ensure ensures~~ the flexibility for ~~the~~ purchase of ~~agriculture agricultural~~ inputs like seeds, fertilizers, etc. Finally, the adoption of interventions is location-specific, thus the govt. ~~should Should~~ give more attention ~~at to~~ the policy, research, and practice of new ~~climate-resilient climate-resilient~~ interventions which will encourage the farmers to adopt them.

### Conflict of Interests

The authors declare that there is no conflict of interest.

### Data availability statement

The data is available from the corresponding author upon reasonable request.

### Disclaimer

The content, opinions, and views expressed in the research communication published in the journal namely These views are of the authors and do not necessarily reflect the views of the organization they belong to.

### REFERENCES

1. Aryal, J. P., Sapkota, T. B., Khurana, R., Khatri-Chhetri, A., Rahut, D. B., & Jat, M. L. (2020). Climate change and agriculture in South Asia: Adaptation options in smallholder production systems. *Environment, Development and Sustainability*, 22(6), 5045-5075.

Formatted: Justified, Space After: 0 pt

2. Asfaw, S., & Maggio, G. (2016). *Climate-Smart Agriculture: Building Resilience to Climate Change: The Economics of Climate-Resilient Development*. Edward Elgar Publishing.

Formatted: Line spacing: single

Formatted: Justified, Space After: 0 pt

3. Dinesh, D., Bett, B., Boone, R. B., Grace, D., Kinyangi, J., Lindahl, J., ... & Tarawali, S. (2018). Impact of climate change on African agriculture: focus on pests and diseases. CCAFS Working Paper No. 5. CGIAR Research Program on Climate Change, Agriculture and Food Security (CCAFS).

Formatted: Line spacing: single

Formatted: Space After: 0 pt

4. Habowa, C., Petros, C., & Kayusi, F. (2024). Cultivating Resilience: The Socio-Economic Impact of Homegardens in Kabwe District, Zambia. *Asian Research Journal of Current Science*, 6(1), 219-235.

Formatted: Font: (Default) Times New Roman, 12 pt

Formatted: Normal, Left, No bullets or numbering

Formatted: Justified, Space After: 0 pt

5. IPCC. (2019). *Climate Change and Land*. IPCC Report.

Formatted: Justified, Space After: 0 pt

6. IPCC. (2022). *Climate*

Formatted: Space After: 0 pt

7. Kayusi, F., Kasulla, S., Malik, S. J., & Chavula, P. (2024). Climate Information Services (CIS): A Vital Tool for Africa's Climate Resilience. *Asian Journal of Advanced Research and Reports*, 18(10), Article 10. <https://doi.org/10.9734/ajarr/2024/v18i10759>

Formatted: Indent: Left: 0.5", Space After: 0 pt, No bullets or numbering

Formatted: Space After: 0 pt

Formatted: Font: (Default) Times New Roman, 12 pt

Formatted: Normal, Left, No bullets or numbering

- 5-8. [Kayusi, F., Kasulla, S., Malik, S. J., Chavula, P., Kengere, D., & Joseph, M. \(2024b\). Policy Influence on Genetic Modification: Innovations in Enhancing Crop Nutrition. 1, 37-49. <https://doi.org/10.5281/zenodo.14202740>](#) Formatted: Justified, Space After: 0 pt
- 6-9. Kumar, S., & Kumar, R. (2020). Adoption of climate-smart agricultural practices in the arid regions of Rajasthan, India. *Environmental Management*, 66(2), 356-369. Formatted: Justified, Space After: 0 pt
- 7-10. Lipper, L., Thornton, P., Campbell, B. M., Baedeker, T., Braimoh, A., Bwalya, M., & Torquebiau, E. F. (2014). Climate-smart agriculture for food security. *Nature Climate Change*, 4(12), 1068-1072. Formatted: Justified, Space After: 0 pt
- 8-11. Masson-Delmotte, V., Pörtner, H. O., Skea, J., Buendía, E. C., Zhai, P., & Roberts, D. (2019). Climate change and land. IPCC Report. Formatted: Justified, Space After: 0 pt
- 9-12. Naresh Kumar, S., Aggarwal, P. K., Rani, S., Jain, S., Saxena, R., & Choudhary, R. (2011). "Impact of climate change on crop productivity in western ghats, coastal and northeastern regions of India." *Current Science*, 101(3), 332-341. Formatted: Justified, Space After: 0 pt
- 10-13. Rao, K. N., & Mohan, G. (2018). Climate-smart agriculture for rice cultivation in Tamil Nadu: An empirical analysis. *Agricultural Systems*, 165, 112-123. Formatted: Justified, Space After: 0 pt
- 11-14. Reddy, V. R., & Syme, G. (2015). Climate-smart agriculture in India: Towards promoting resilient farming systems. *Climate and Development*, 7(3), 269-281. Formatted: Justified, Space After: 0 pt
- 12-15. Sharma, V. P., & Singh, N. (2017). Adoption and impact of climate-smart agriculture practices in Himachal Pradesh. *Indian Journal of Agricultural Economics*, 72(3), 353-365. Formatted: Justified, Space After: 0 pt
- 13-16. Sharma, I., Sharma, V., Khan, A., Kumar, P., Rai, E., Bamezai, R. N., ... & Sharma, S. (2018). Ancient human migrations to and through Jammu Kashmir-India were not of males exclusively. *Scientific reports*, 8(1), 851. Formatted: Justified, Space After: 0 pt
- 14-17. Singh, A. K., Sharma, S. D., & Singh, H. P. (2013). "Impact of NICRA Interventions on Agriculture and Allied Sectors in Bihar and Jammu and Kashmir." *Indian Journal of Agricultural Sciences*, 83(3), 1-7. Formatted: Justified, Space After: 0 pt
- 15-18. Taneja, G., Pal, B. D., & Dar, W. D. (2018). Adoption of climate-resilient technologies: Empirical evidence from rice farmers in eastern India. *Agricultural Economics Research Review*, 31(1), 81-92. Formatted: Justified, Space After: 0 pt

UNDER PEER REVIEW

