

# Effects of pompage associated or not with Photobiomodulation on pain, range of motion, and quality of life in patients with neck pain: a controlled, randomized and double blinded study protocol

## ABSTRACT

**Introduction:** Chronic neck pain is a persistent condition in the spinal region, causing pain and restricted mobility. Its management often includes manual therapies, with passive and active approaches aimed at pain relief, functional improvement, enhanced mobility, motor control, and reduced inflammation. Chronic neck pain is termed non-specific when it is unrelated to conditions like inflammatory rheumatic disease, osteoporosis, cancer, or radiculopathy. Photobiomodulation (PBM) using lasers and LEDs has shown therapeutic efficacy in treating neck pain, offering a non-invasive, easy-to-apply option for patients and clinicians. This study aims to evaluate the effects of Pompage therapy, alone or combined with PBM using an LED cluster, on pain and neck disability. **Methods and Analysis:** This controlled, randomized, blinded clinical trial will include participants aged 18-62 with non-specific chronic neck pain. Participants will be randomly assigned to two groups: (1) Pompage only (n=28), and (2) Pompage + PBM (n=28), which combines Pompage with PBM using an LED cluster applied to the neck for 10 minutes. The protocol includes 10 sessions, three times per week. The PBM uses a cluster of 264 LEDs (8 mW; 4.89 J; 9.6 J/cm<sup>2</sup>; 16 mW/cm<sup>2</sup> per LED), with 132 red (660 nm) and 132 infrared (850 nm) LEDs. Pain and functional disability will be assessed using the Visual Analog Scale (VAS) and the Neck Pain Disability Index before and after treatment, with statistical analysis at  $\alpha=0.05$ . **Ethics and Dissemination:** Approved by the institutional review board, the study ensures participant confidentiality and data security. Results will be shared in peer-reviewed journals and conferences, with data available in public repositories per data-sharing agreements and regulatory guidelines.

**Keywords:** Neck pain, photobiomodulation, LED. Manual therapy

## INTRODUCTION

Neck pain, a syndrome affecting the cervical region, arises from various factors such as mechanical and postural alterations, osteoarthritis, herniated discs, arthritis, and muscle spasms (Da Silva et al., 2012)<sup>1</sup>. It significantly impacts quality of life and productivity, contributing to work absences and high treatment costs (Kazeminasab et al., 2022; Multanen et al., 2021)<sup>2,3</sup>. Common causes include muscular tensions, ligamentous involvement, and poor posture (Kazeminasab et al., 2022; Mylonas et al., 2021).<sup>2,4</sup>

Chronic neck pain, defined as pain persisting for over three months, affects approximately two-thirds of the adult population, with a higher prevalence in females due to lower muscle strength (Multanen et al.,

2021).<sup>3</sup> Cervical pain is classified into nonspecific or mechanical, not linked to specific pathologies, and secondary, which arises from underlying conditions (Coulter et al., 2019)<sup>5</sup>.

Various instruments are used to assess neck pain. The Visual Analog Scale (VAS), which grades pain from 0 (no pain) to 10 (very strong pain), is a widely used tool for evaluating pain intensity (Arruda et al., 2018)<sup>6</sup>. To evaluate cervical spine mobility, goniometry is one of the most commonly used instruments. The cervical spine allows movements such as flexion, extension, lateral rotation, and bending. The goniometer measures this range, with normal ranges being 0-80 degrees for flexion, 0-50 degrees for extension, 0-45 degrees for lateral bending, and 0-80 degrees for lateral rotation (Sukari et al., 2021).<sup>7</sup>

For assessing quality of life and functional disability in these patients, questionnaires like WHOQOL-100 and the Neck Disability Index (NDI) are utilized. The WHOQOL-100 assesses the impact of neck pain on quality of life, while the NDI evaluates functional disability (González Rueda et al., 2017; Andriollo et al., 2022)<sup>8,9</sup>.

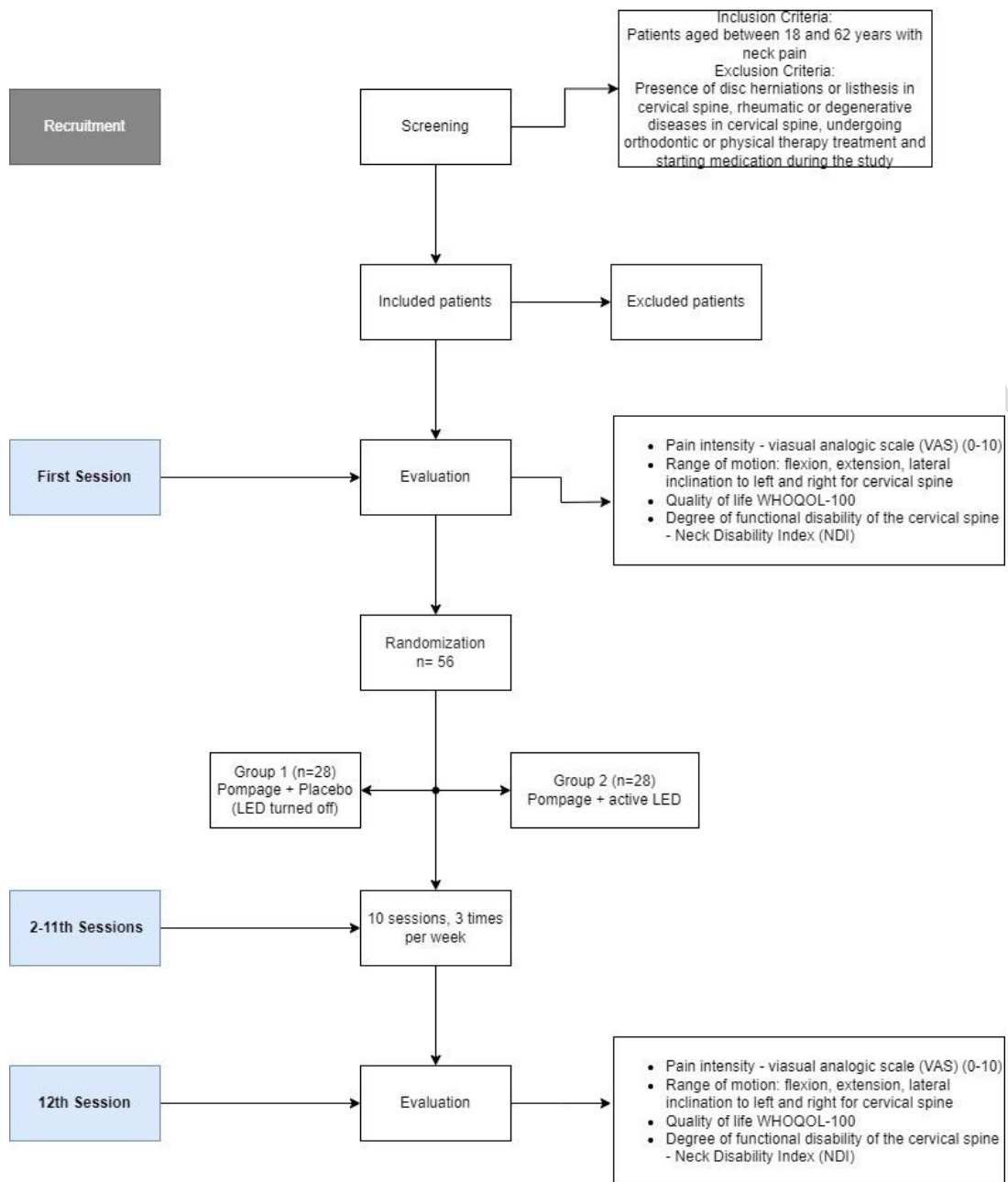
Regarding treatment options for neck pain, several can be cited, including medications, photobiomodulation using different light sources such as low-level lasers and LEDs, manual therapy, and kinesiotherapy. These treatments exhibit varying degrees of effectiveness (Coulter et al., 2019; Kazeminasab et al., 2022; Hidalgo et al., 2017; Bernal- Utrera et al., 2020)<sup>5,2,10,11</sup>. Manual therapies such as myofascial release and pompage, which the muscular fascia, have been shown to be effective in reducing pain and improving function (Andriollo et al., 2022).<sup>9</sup>

Photobiomodulation (PBM), using lasers and LEDs, is a non-invasive therapy gaining attention for its pain-relief and tissue-repair benefits. It modulates biological processes through light absorption by chromophores, promoting ATP production and reducing oxidative stress (Karu, 2014; Teixeira et al., 2022).<sup>12,13</sup> Studies have shown PBM to be effective in reducing pain and inflammation, and accelerating tissue repair (Leotty e t al., 2021; Mesquita-Ferrari et al., 2011; Kadhim et al.2013and Chow et al 2009, Barreto et al, 2019)<sup>14, 15, 16, 17, 18</sup> highlighted the benefits of PBM in reducing cervical pain, despite some inconclusive evidence. Odagiri et al. (2022)<sup>19</sup> demonstrated the effectiveness and safety of LED therapy for cervical and shoulder pain.

The aim of the present study is to combine pompage and photobiomodulation (PBM) to enhance therapeutic effects on cervical musculature, pain, and range of motion. This innovative approach seeks to address gaps in scientific knowledge and provide effective management for neck pain.

## **METHODS**

This study is a controlled, randomized, double blinded, clinical trial, approved by the Ethics Committee of Universidade Nove de Julho (UNINOVE - Protocol 6.742.399). The methodologies were designed in accordance with the SPIRIT Statement criteria (<https://www.spirit-statement.org/>), and the protocol has been registered on the ClinicalTrials platform (<https://clinicaltrials.gov/NCT06416527>). All participants will be informed about the study procedures, and if they consent, they will sign an informed consent form. The methodology flowchart of the study is illustrated in Figure 1.



**Fig 1. Flowchart of the protocol following SPIRIT checklist.**

### Sample Description

Participants of both genders with chronic mechanical neck pain who are not undergoing any concurrent treatment at the moment will be selected for this study. All participants will be explained the objectives and procedures to be carried out and participants may withdraw from participation at any time during the study.

Patient monitoring and attempts to ensure adherence to treatment will be done by sending regular messages and telephone contact.

### **Patient involvement**

Patients were not involved in the design, development, or choice of outcomes of this study. Their role was limited to participation in the interventions conducted as part of the research, and they were fully informed about the procedures and objectives of these interventions. Although they were not engaged in the broader aspects of study planning or decision-making, their feedback on the interventions was valuable in understanding their experiences. Following the completion of the study, we plan to share the results with the participants through an accessible summary of findings, ensuring that the information is presented in a clear and understandable format

### **Inclusion Criteria:**

- Age between 18 and 62 years;
- Both genders;
- Without comorbidities.
- Neck pain for at least three months.

### **Exclusion Criteria:**

- Presence of rheumatic or degenerative diseases in the cervical region
- Ongoing orthodontic treatment
- Ongoing Physiotherapy treatment, massage or acupuncture in the cervical region
- Initiation of any new medication during the study
- Be taking painkillers and anti-inflammatory drugs
- Use of bite plate

Patients will be advised that the introduction of new medications and the use of dental plates or braces will not be permitted during the study, as they may interfere with the results.

### **Randomization**

Participants will be randomly allocated into the experimental groups using a draw conducted through the Sealed Envelope website (<https://www.sealedenvelope.com>). The allocation will be performed in a blocked manner, with participants evenly distributed (1:1) between two groups. To achieve the required sample size, participants will be divided into two groups of 28 patients each. Sequentially numbered opaque envelopes (1 to 56) will be prepared, each containing the group assignment based on the draw results. These envelopes will remain sealed until the time of treatment. The draw and envelope preparation will be carried out by an individual who is not directly involved in the clinical aspects of the study. Immediately before treatment, the researcher responsible for administering the PBM will open the envelope (without altering the numerical sequence) and perform the indicated procedure.

### **Sample Size Calculation**

The determination of sample size was based on the study conducted by Gur et al. (2004)<sup>20</sup> which assessed non-specific pain at rest in the cervical region using the Visual Analog Scale (VAS) for groups undergoing PBM with low-level laser irradiation (LBI) or placebo. Sample size calculation was performed using the tool available at <https://www.stat.ubc.ca/~rollin/stats/ssize/n2.html>, applying the Z-test method with a significance level of 0.05 (resulting in a 95% confidence interval), an absolute error of 5%, and a power of 80%. The calculation initially indicated that 22 patients per group would be necessary. To account for a potential 20% dropout rate and to ensure adequate power, the sample size was adjusted to 28 patients per group, resulting in a total of 56 participants for the study.

### **Recruitment**

Participants will be recruited through announcements in health clinics and at the university where the study is being conducted, in Sao Paulo-SP Brazil.

### **Data collection plan**

All instructions regarding outcomes, assessments, and patient monitoring will be carried out to ensure patient retention and completion of follow-up.

### **Data monitoring**

The blinded evaluator and the treatment administrator will conduct the treatment and assessments according to the presented flowchart. If they notice in each session the emergence of an exclusion criterion, such as the initiation of another treatment (medicinal or otherwise), they will interrupt and discontinue the treatment. Only data collected prior to this exclusion criterion will be used, and the patient will be considered as intention-to-treat up to that point

### **Procedures**

The study team will be formed by two physical therapists who will apply the Pompage technique and photobiomodulation with clusters of LED in cervical region and an evaluator blinding to the study who will make the patients evaluations. These evaluations will be made in the first and in the last sessions and will analyze the neck pain intensity, the range of motion, the quality of life and the degree of functional neck disability.

The following instruments will be used to evaluate the patients:

- 1) VAS visual analogue scale to validate pain.
- 2) Goniometer for cervical range of motion (ROM);
- 3) The WHOQOL-100 questionnaire;
- 4) The Neck Disability Index (NDI) questionnaire.

Patients will sign a free and informed consent form to participate in clinical research in which they will be informed about the objectives of the study, benefits, possible risks and guarantee of confidentiality.

The patients will be allocated in one of the two groups of treatment:

- 1) Pompage Group (Control): Patients will receive treatment through the application of the pompage technique, a manual therapy involving mobilization and sliding movements performed by the therapist's hands in the cervical region and a simulation of photobiomodulation using a LED cluster. The device will be positioned on the cervical region for 10 minutes while turned off (inactive), with a recorded beep sound to simulate the treatment. This treatment will consist of 10 sessions, conducted 3 times per week, excluding weekends.

- 2) Pompage + PBM Group (Experimental): Patients in this group will undergo 10 sessions combining the pompage technique with photobiomodulation using a LED cluster applied to the cervical region. This combined treatment will also be administered 3 times per week, excluding weekend.

### **Blinding Implementation**

To randomly allocate participants into the experimental groups, a randomization process will be conducted with 56 numbers using the Sealed Envelope website (<https://www.sealedenvelope.com>). Participants will be distributed equally (1:1) between the two groups in a blocked manner. To achieve the required sample size, 8 groups of 8 patients each will be randomly assigned. Opaque envelopes will be numbered sequentially from 1 to 56 and will contain the group assignment based on the order of the randomization process. These envelopes will remain sealed and in numerical order until the time of treatment. The randomization process and preparation of the envelopes will be managed by an individual not directly involved in the clinical aspects of the study. Immediately before treatment, the researcher responsible for administering PBM will open one envelope (without altering the numerical sequence) and proceed with the indicated procedure.

Patients and evaluators will be blinded to group allocation. During the treatment sessions, patients will wear protective eyewear to prevent them from discerning whether they are receiving LED treatment or a placebo. For the sham treatment, the cluster of LED will be turned off and a recorded sound signal will be used to mask the operational status of the equipment, ensuring that patients will not be able to distinguish between active and inactive treatment, thus maintaining effective blinding.

## **OUTCOMES**

### **Pain**

The Visual Analog Scale (VAS) is a visual graduated scale ranging from 0 to 10 cm, where 0 represents no pain and 10 represents the most intense pain. This scale is used to measure the pain experienced by the patient, providing a straightforward method to assess and monitor treatment progression. Patients will be

asked to rate their pain intensity, and the corresponding number on the scale will be recorded (Arruda et al., 2018).<sup>6</sup>

### Cervical Range of Motion (ROM)

The Goniometer is used to measure the degrees of range of motion (ROM) of the cervical region. Normal ROM standards are: flexion from 0 to 80 degrees; extension from 0 to 50 degrees; lateral flexion to the right and left from 0 to 45 degrees; and right and left rotation from 0 to 80 degrees (Sukari et al, 2021)<sup>7</sup>.

This tool will be utilized to assess and monitor treatment progression. To measure the range of motion in degrees for extension (figure 2.A) and flexion (figure 2.B) of the cervical spine, the axis of the goniometer was positioned at the level of the acromion in the same plane as the seventh cervical vertebra, with the fixed arm parallel to the ground and the movable arm aligned with the ear lobe (Chaves et al., 2008)<sup>21</sup>.

To measure lateral inclination movement (figure 2.C), the fixed arm of the goniometer was positioned at the level of the C7 vertebra, parallel to the ground, with the movable arm at the midline of the cervical spine (Chaves et al, 2008)<sup>21</sup>. To measure cervical spine rotation (figure 2.D), the axis of the goniometer was positioned at the center of the head, with the movable axis aligned with the nose (Chaves et al, 2008)<sup>21</sup>.



## **Fig 2. Cervical Range of Motion (ROM).**

- A - Measurement of Cervical Spine Extension Range of Motion (ROM) Initial position and extension movement and B - final position of the cervical extension movement; C - Measurement of Cervical Spine Flexion ROM. Initial position and flexion movement and D - Final position of the cervical flexion movement; E - Measurement of Cervical Spine Lateral Inclination ROM. Initial position and lateral inclination and F - Final position of the cervical lateral inclination movement; G - Measurement of Lateral Rotation of the Cervical Spine ROM. Initial position and lateral rotation and H - Final position of the cervical lateral rotation movement.

### **Quality of Life**

The WHOQOL-100 questionnaire is extensively used to evaluate the quality of life in patients with neck pain. It assesses various aspects, including psychological, physical, spiritual, independence level, social relations, and environmental factors (). This abbreviated instrument, developed by the World Health Organization, comprises 26 items divided into four main domains: Physical, Psychological, Social Relationships, and Environment. Each item will be rated on a 5-point Likert scale, from 1 ("not at all") to 5 ("extremely"). Scores for each domain will be calculated by averaging the responses for the relevant items and then multiplying by 4 to scale the results from 0 to 100. Higher scores will reflect a better perception of quality of life in that domain.

### **Degree of Functional Disability**

The Neck Disability Index (NDI) questionnaire assesses the degree of functional disability in the cervical region. It is a self-administered questionnaire consisting of 10 sections, each with 6 responses, reflecting 6 stages of functional disability. Scores range from 0 to 5, with 0 indicating the lowest and 5 indicating the highest level of disability (Gonzalés Rueda et al., 2017).<sup>8</sup>

## **INTERVENTIONS**

### **Pompage**

To perform cervical POMPAGE, the patient either lies comfortably on their back or sits upright. The therapist identifies the target area on the cervical spine. Using gentle pressure, the therapist applies traction to the cervical spine, stretching the muscles and fascia. The traction is maintained for 20 seconds before being released, allowing the cervical spine to return to its neutral position. This process will be repeated three times, with adjustments made based on the patient's response and comfort level.

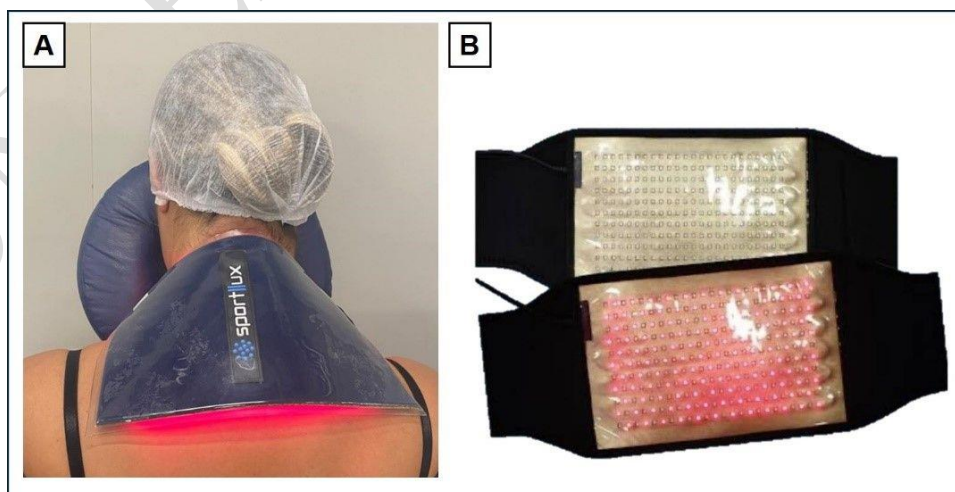


**Fig 3. Neck POMPAGE procedure.**

A and B: Stretching of the posterior cervical extensor muscles of the neck; C- Stretching of the neck rotators.

#### **Photobiomodulation using LED cluster**

Photobiomodulation using a diode-emitting light (LED) cluster device SportLux (Cosmedical, São Paulo, Brazil) will be administered to the cervical region of each patient. In the Placebo group, the device will be positioned on the cervical region for 10 minutes while turned off (inactive), with a recorded beep sound to simulate the treatment duration. In the Experimental group, the device will be activated for the same duration to deliver the actual photobiomodulation therapy.



**Fig 4. PBM procedure.**

A: Placement of the device on the patient; B: LED cluster.

The parameters to be used in this protocol are detailed in Table 1

**Table 1:** PBM parameters.

DOSIMETRIC PARAMETERS	VALUES
Light Source	LED
Application mode	Contact
Wavelength	132 LEDs with 660nm
	132 LEDs with 850nm
Spectral Bandwidth	20 nm
Beam area on the target	0,5 cm <sup>2</sup>
Average power of each LED (mW)	8
Irradiance (mW/cm <sup>2</sup> )	16
Exposure time (s)	10
Radiant Energy per LED	4,8J
Radiant exposure	9,6J/cm <sup>2</sup>
Light emission angle	90°
Energy per cluster	633,6J with 660nm
	633,6J with 850nm

### Statistical Analysis

Initial descriptive analyses will be conducted for all measured variables, including quantitative variables (mean and standard deviation) and qualitative variables (frequencies and percentages). Normality tests will then be performed to determine the appropriate statistical tests for each dataset. Specific statistical tests will be applied accordingly. For all tests, a significance level of 5% or the corresponding p-value will be adopted. Subgroup analyses may be conducted, considering outcomes by gender, age, or pain severity.

## Ethics and dissemination

All ethical and safety considerations relevant to this study have been thoroughly reviewed and approved by the appropriate institutional review board (IRB)/ethics committee. Participants' confidentiality and data security will be strictly maintained in accordance with established guidelines and regulations. Any adverse events or ethical concerns will be promptly addressed following standard protocols.

The investigators and sponsor will develop a dissemination policy to communicate trial results to participants, healthcare professionals, the public, and other relevant groups, which may include publication in scientific journals, reporting in results data bases, or other data-sharing arrangements, with clear outlines of any publication restrictions

- **Data availability Statement**- all data will be available for the readers.
- **Ethics approval Statement** - The project received approval from the Research Ethics of Universidade Nove de Julho (process: 6.742.399). All stages of the study will be monitored by this committee, which is composed of researchers from the University
- **Patient consent Statement** – All the participants included signed an Informed consent. The CI document was in writing.
- **Clinical trial registration:** NCT 06416527 (initial release: April 30th 2024).

## REFERENCES:

- 1- Da Silva Rodrigo Marcel Valentim, de Lima Marcio Souza, Costa Fernando Henrique, da Silva Ana Carolina. Effects of chiropractic care in patients with cervical pain: a systematic review. *Rev Dor*. 2012 jan;13(1).71-4.
- 2- Kazeminasab S, Nejadghaderi SA, Amiri P, Pourfathi H, Araj-Khodaei M, Sullman MJM, Kolahi AA, Safiri S. Neck pain: global epidemiology, trends and risk factors. *BMC Musculoskelet Disord*. 2022 Jan 3;23(1):26. doi: 10.1186/s12891-021-04957-4. PMID: 34980079; PMCID: PMC8725362
- 3- Multanen J, Häkkinen A, Kautiainen H, Ylinen J. Associations of neck muscle strength and cervical spine mobility with future neck pain and disability: a prospective 16-year study. *BMC Musculoskelet Disord*. 2021 Oct 29;22(1):911. doi: 10.1186/s12891-021-04807-3. PMID: 34715847;

- 4- Mylonas K, Angelopoulos P, Billis E, Tsepis E, Fousekis K. Combining targeted instrument-assisted soft tissue mobilization applications and neuromuscular exercises can correct forward head posture and improve the functionality of patients with mechanical neck pain: a randomized control study. *BMC Musculoskelet Disord.* 2021 Feb 21;22(1):212. doi: 10.1186/s12891-021-04080-4. Erratum in: *BMC Musculoskelet Disord.* 2021 Apr 26;22(1):385. PMID: 33612123; PMCID: PMC7898422; PMCID: PMC8556991.
- 5- Coulter ID, Crawford C, Vernon H, Hurwitz EL, Khorsan R, Booth MS, Herman PM. Manipulation and Mobilization for Treating Chronic Nonspecific Neck Pain: A Systematic Review and Meta-Analysis for an Appropriateness Panel. *Pain Physician.* 2019 Mar;22(2):E55-E70. PMID: 30921975; PMCID: PMC6800035.
- 6- Arruda, G. A., Coledam, D. H. C., Oliveira, A. R., Neri, F. D. S., Greca, J. P. A., & Cardoso, J. R. (2019). PROPOSAL AND TEST-RETEST RELIABILITY OF A SCALE FOR CERVICAL, THORACIC, AND LUMBAR SPINE PAIN IN BRAZILIAN YOUNG PEOPLE. *Revista paulista de pediatria: orgao oficial da Sociedade de Pediatria de Sao Paulo*, 37(4), 450–457.
- 7- Sukari, Aiman Asyraf Ahmad et al. “Examining the Range of Motion of the Cervical Spine: Utilising Different Bedside Instruments.” *The Malaysian journal of medical sciences: MJMS* vol. 28,2 (2021): 100-105. doi:10.21315/mjms2021.28.2.9.
- 8- González Rueda V, López de Celis C, Barra López ME, Carrasco Uribarren A, Castillo Tomás S, Hidalgo García C. Effectiveness of a specific manual approach to the suboccipital region in patients with chronic mechanical neck pain and rotation deficit in the upper cervical spine: study protocol for a randomized controlled trial. *BMC Musculoskelet Disord.* 2017 Sep 5;18(1):384. doi: 10.1186/s12891-017-1744-5. PMID: 28870191; PMCID: PMC5584013.
- 9- Andriollo Débora Bonesso, Frigo Letícia Fernandez, Cielo Carla Aparecida. Effect of pompage on pain, disability and craniocervical position off emale teachers- Randomized clinical trial. *Fisioter.Mov.*, 2022, v.35, e35118.
- 10- Bernal-Utrera C, Gonzalez-Gerez JJ, Anarte-Lazo E, Rodriguez-Blanco C. Manual therapy versus therapeutic exercise in non-specific chronic neck pain: a randomized controlled trial. *Trials.* 2020 Jul 28;21(1):682. doi: 10.1186/s13063-020-04610-w. PMID: 32723399;
- 11- Karu TI. Cellular and molecular mechanisms of photobiomodulation (low-power laser therapy). *IEEE Journal on Selected Topics in Quantum Electronics.* 2014;20. <https://doi.org/10.1109/JSTQE.2013.2273411>
- 12-Teixeira AM, Leal-Junior ECP, Casalechi HL, Vanin AA, de Paiva PRV, Melo FHC, Johnson DS, Tomazoni SS. Photobiomodulation Therapy Combined with Static Magnetic Field Reduces Pain in Patients with Chronic Nonspecific Neck and/or Shoulder Pain: A Randomized, Triple-Blinded, Placebo-Controlled Trial. *Life (Basel).* 2022 Apr 29;12(5):656. doi: 10.3390/life12050656. PMID: 35629324; PMCID: PMC9147435.
- 13- Leotty Carla Lopes Rodrigues, Lima Michele Mendes Coelho, De Araujo Francisco Xavier. Effect of low-level laser therapy on pain and function on patients with shoulder tendinopathy: A systematic review. *Fisioter Pesqui.* 2020;27(2):210-217;

- 14- Mesquita-Ferrari RA, Martins MD, Silva JA Jr, da Silva TD, Piovesan RF, Pavesi VC, Bussadori SK, Fernandes KP. Effects of low-level laser therapy on expression of TNF- $\alpha$  and TGF- $\beta$  in skeletal muscle during the repair process. *Lasers Med Sci*. 2011 May;26(3):335-40. doi: 10.1007/s10103-010-0850-5. Epub 2010 Nov 4. PMID: 21053039.
- 15- Kadhim-Saleh A, Maganti H, Ghert M, Singh S, Farrokhhyar F. Is low-level laser therapy in relieving neck pain effective? Systematic review and meta-analysis. *Rheumatol Int*. 2013 Oct;33(10):2493-501. doi: 10.1007/s00296-013-2742-z. Epub 2013 Apr 12. PMID: 23579335.
- 16- Chow RT, Johnson MI, Lopes-Martins RA, Bjordal JM. Efficacy of low-level laser therapy in the management of neck pain: a systematic review and meta-analysis of randomised placebo or active-treatment controlled trials. *Lancet*. 2009 Dec 5;374(9705):1897-908. doi: 10.1016/S0140-6736(09)61522-1. Epub 2009 Nov 13. Erratum in: *Lancet*. 2010 Mar 13;375(9718):894. PMID: 19913903.
- 17- Barreto, T. W., & Svec, J. H. (2019). Chronic Neck Pain: Nonpharmacologic Treatment. *American family physician*, 100(3), 180–182.B
- 18- Odagiri K, Yamauchi K, Toda M, Uchida A, Tsubota H, Zenba K, Okawai H, Eda H, Mizuno S, Yokota H. Feasibility study of a LED light irradiation device for the treatment of chronic neck with shoulder muscle pain/stiffness. *PLoS One*. 2022 Oct 17;17(10):e0276320. doi: 10.1371/journal.pone.0276320. PMID: 36251669; PMCID: PMC9576044.
- 19- Gur, A., Sarac, A. J., Cevik, R., Altindag, O., & Sarac, S. (2004). Efficacy of 904 nm gallium arsenide low level laser therapy in the management of chronic myofascial pain in the neck: a double-blind and randomize-controlled trial. *Lasers in surgery and medicine*, 35(3), 229–235.  
<https://doi.org/10.1002/lsm.2008>
- 20- Chaves TC, Nagamine HM, Belli JFC, de Hannai MCT, Bevilaqua-GrossiD, de Oliveira AS. Reliability of fleximetry and goniometry for assessing neck range of motion among children. *Brazilian Journal of Physical Therapy*12(4). Aug 2008.
- 21-Fleck MPA, WHOQOL – Abreviado, versão em português. Programa de saúde mental organização mundial da saúde Genebra. Coordenação do GRUPO WHOQOL no Brasil. [internet] PDF. [4 p.] Available from: <https://periodicos.ufjf.br/index.php/hurevista/article/view/107/14871>
- 22- WHO. WHOQOL-BREF ENGLISH. The World Health Organization [Internet] PDF. 2024 [3 p.]. Available from: <https://www.who.int/tools/whoqol/whoqol-bref>