

Original Research Article

'Evaluation of the *in vitro* anthelmintic activity of *Melia azedarach* and *Swertia chirata* aqueous extracts against *Haemonchus contortus*'

ABSTRACT

Aim: This research intended to assess the *in vitro* anthelmintic properties of Mahaneem leaves (*Melia azedarach*) and whole plant of Chirata (*Swertia chirata*).

Study Design: *In vitro* study was conducted against *Haemonchus contortus* eggs and adult stage by egg hatch assay (EHA) and adult motility inhibition test (AMIT).

Place and duration of study: This study was conducted in the department of Veterinary Parasitology, WBUAFS, Kolkata-37 between November, 2023 to August, 2024

Methodology: The aqueous extract of Mahaneem and Chirata whole plants were prepared by decoction method, dried and desolved in 2% Dimethyl Sulfoxide to make desirable concentration of extract solutions. Adult *H. contortus* were collected from freshly slaughtered abomasum of sheep for separation of eggs and active motile adult was used for AMIT. Each EHA and AMIT was performed in triplicate.

Results: The result revealed that both Chirata and Mahaneem extracts shows anthelmintic activity against *Haemonchus contortus*. Chirata extract had better efficacy against both eggs and adult stage of *Haemonchus contortus* compare to Mahaneem leaf extract. In EHA, Chirata extract efficacy at the dose of 50 mg/ml and 25 mg/ml was more statistically significant ($p < 0.05$) than Mahaneem extract. In AMIT, also Chirata shows significantly more efficacy at 50 mg/ml and 25 mg/ml than Mahaneem, but at the dose rate of 10 mg Mahaneem shows better efficacy (38.88 ± 2.22) than Chirata (31.11 ± 2.22) extract. At 50 mg/ml concentration after 10 hours of experiment Chirata shows highest efficacy (82.22 ± 2.22) compare to Mahaneem (57.77 ± 2.22).

Conclusion: Both Chirata and Mahaneem aqueous extract can potentially be effective against *Haemonchus contortus* and other GINs in small ruminants when administered properly with selected doses.

Keywords: Chirata, Mahaneem, Anthelmintic, *Haemonchus contortus*, EHA, AMIT

1. INTRODUCTION

The herb *Swertia chirata*, widely referred to as 'Chirata', is highly esteemed for its various medicinal properties since the time of the 'Atharvaveda' (Joshi and Dhawan, 2005) and it has been asserted to

be a highly effective medication for recurrent fever, dermatological issues, gastrointestinal parasites, managing the intestines and also function as an anti-inflammatory and blood sugar-lowering agent (Kumar et al., 2010).

Melia azedarach (Family Meliaceae), usually referred to as Mahaneem is primarily located in the

forests of the North-West Himalaya region in India, Pakistan, China, and various tropical and subtropical nations (Nakatani et al., 1998).

Haemonchosis can result in large economic losses by causing appetite depression, damages to gastric function, and alterations in total protein content, energy, and mineral metabolism of livestock (Zarlenga et al., 2016) and the control has relied on the use of synthetic anthelmintics leads to growing anthelmintic resistance against commonly available drugs (McRay et al., 2015).

In addition, there has been an increasing concern over chemical residues in edible animal products associated with the use of anthelmintic drugs in livestock (Waller, 1997; Spellberg et al., 2016).

In this scenario, it is an important to search alternative of anthelmintic to control the parasitic problem in the animal husbandry sector.

Studies to find alternative strategies for the control of nematodes have focused on various options, one of the strategy is to explore the anthelmintic properties of plants containing bio active compounds such as secondary metabolites.

In this context, the investigation and evaluation of different plants for new anthelmintic substances (Villegas et al., 2011)

is very much necessary. The

herbal deworming method could be an alternative treatment for the efficient management of parasitic infestation and additionally to fight against parasitic

resistance toward the chemical anti-parasitic agents (Jain and Sahni, 2009). Anthelmintics derived from indigenous plants have pragmatic features for marginal farmers who cannot

afford the commercial product, and for large commercial farmers who are shifting to organic farming (Gradé et al.,2008; Taylor et al., 2001). Furthermore, herbal anthelmintics as a natural product are implicated to least likely bioaccumulate in the tissues of animal and the environment (Taylor et al.,2011). They are likewise considered eco-friendly and biodegradable (Hammond et al.,1997; McCorkle et al.,1995). Above all, multiple bioactive compounds present in herbal anthelmintics may translate to multiple mechanisms in killing the parasites, which then limit the likelihood of developing anthelmintic resistance (Chagas, 2015). Since ancient times, people have been exploring the nature particularly medicinal plants in search of new drugs. Medicinal plants are used by 80% of the world population for their essential health needs and this efficacy depends upon the current knowledge about taxonomic features of plant species, plant parts and biological property of medicinal plants which in turn depends upon the occurrence of primary and secondary metabolites (Vinoth et al.,2011). Screening for effective anthelmintic compounds remains a major obstacle in the drug development process and screening in the natural hosts is typically very expensive, requiring appropriate facilities and can raise concerns about animal welfare (Kumarasingha et al.,2014). So, *in vitro* examination can be an good option for preliminary study of different herbal anthelmintic activity

2. MATERIALS AND METHODS

2.1. Plant Materials Collection: Two ethnomedicinal plants Mahaneem or the bead tree leaves (*Melia azedarach*) about 500 gm and Chirata or bitter stick whole plant (*Swertia chirata*) about 500 gm were collected from in and around the WBUAFS,Kolkata and Mohanpur campus (22°36'23"N, 88°23'14"E / 22.6065264°N, 88.3872166°E/22.6065264; 88.3872166.) for *in vitro* anthelmintic activity screening on different parasitic stags of *Haemonchus contortus*. Then all materials was washed 3 times with clean water and dry at room temperature (27°C temperature) for 7 to 15 days depend on materials avoiding direct sunlight and to avoid dust and rat contamination materials was put in the incubation. Then all the material was powdered separately by motor grinder and measure desirable amount for the preparation of extract. Plants was identified as per available literature on identification (Bentley and Trimen, 1880; Joshi and Dhawan, 2005; Lu et al.,2021).

2.2. Aqueous Extract Preparation (Decoction):

About 100 gm finely powder was kept in 500 ml distilled water for overnight and next day boil for 30 minutes. Resulting after boiling decoction solution was cooled and filtered with Whatman's filter paper no-1 to collect the acquous solution. Then extraction solution was evaporated and concentrated by lyophiliser (Simeco,India) and further dry by keeping at 40°C in hot air oven. Dry weight measure and dissolved in 2 % dimethyl sulfoxide (DMSO) as per required concentration and store at 4°C for future uses.

2.3. Recovery of Adult *Haemonchus contortus* Worms and Eggs

Adult female worms were collected from the abomasum of slaughtered sheep collected from the local abattoir (New Market, Kolkata) and adult *Haemonchus contortus* were identified as per morphological characteristic (Solusby,1982). Collected worms was washed three times in normal saline to make the worm free from abomasal contents and feed debris. Then collected active motile alive adult worms were used for adult motile inhibition test (AMIT) and others adult female *Haemonchus contortus* were triturated in a clean pestle and mortar to recover the eggs for egg hatch assay. Recovery of eggs from eggs contain triturated materials and test procedure was performed as per method described Cole et al.,(1992). The eggs were recovered with saturated saline solution by flotation and washed repeatedly in distilled water to get final aqueous egg suspension from triturated materials. Eggs were separated, quantified and used within 90 minutes for the test.

2.4. Egg Hatch Assay (EHA)

The guidelines of the World Association for the Advancement of Veterinary Parasitology (WAAVP) was followed for conducting EHA (Coles et al.,1992). Approximately 50 numbers of *Haemonchus contortus* egg suspension in 100 µl of distilled water was incubated with different concentrations (1, 2.5, 5,10, 25, 50 mg/mL) of each plant extract in 2% DMSO in a 96 flat-bottomed micro titre plate to obtain a final tested concentration of 1 to 50 mg/ml. Albendazole served as a positive control and was dissolved in 2% DMSO in de-ionized water to obtain a concentrations of 50 µg/ml and 20 µg/ml), while 2% DMSO and PBS served as the negative control. The setup was incubated in triplicate for each ex-tract at 27°C for 48 hours. At the end of 48 hours, a drop of Lugol's iodine solution was added to each well and the

number of larvae vs unhatched eggs (including larvated ones) was counted with an inverted microscope to calculate egg hatch inhibition (Fig.1,2,3,4,5). All experiments were under-taken in triplicate on three separate occasions

The percentage inhibition of egg hatching was calculated using the formula by Cala et al., (2012)

$$\text{Inhibition of egg hatching (\%)} = \frac{(\text{Eggs} + \text{L}) - \text{L}}{(\text{Eggs} + \text{L})} \times 100$$

L = Number of larvae in a particular well.

2.5. Adult Worm Motility Inhibition (%WMI) Assay:

The AWMI test was performed in 50 mm diameter glass Petri dish according to Sharma et al.,(1971). Adult *Haemonchus contortus* worms (Fig.6) were recovered from the sheep abomasums at laboratory collected and brought from local slaughter house (New Market, Kolkata). Then washed the worms thrice with PBS (pH ,7.2) to make debries free and in each petri dish 10 (Ten) numbers actively motile worms were taken to make the test in triplicates to each plant extracts (50, 25, 10 and 5 mg/mL) in different concentration in separate petri dishes at temperature (28 ±1°C). Positive (albendazole @ 0.20mg /mL) and negative controls (worms with PBS) were included in the assay. The inhibition of motility of the worms exposed to the above concentrations was used as an indicator for anthelmintic activity. The motility of worms was observed by examination under a dissecting microscope at magnification x20 at intervals of 4 h till the worms in negative control lost their active motility, for 10 h of assay. Finally, the extracts and albendazole were washed away and the worms were re-suspended in lukewarm fresh PBS for 30 minutes to observe and test the revival of motility. All the motile (alive) and immotile (dead) worms in three replicates of each concentration and control were counted. Death of the worms was ascertained by the absence of motility for observation period of 5–6 seconds. Worm motility inhibition (%WMI) percentage was calculated as per Rabel et al.,(1994).

Dose-dependent % AWMI

$$= \frac{\text{No.of motile worms in negative control} - \text{No.of motile worms in treatment}}{\text{No.of motile worms in negative control}} \times 100$$

2.6. Statistical Analyses

Comparison of mean percentages of egg hatch inhibition and larval paralysis at different concentration with the control was performed by one-way ANOVA by using SPSS IBM Statistics® v. 20 and probability values P≤ 0.05 were deemed as significant. The Duncan multiple range test was used to identify variations between treatment means when the treatments effect was significant.

3. RESULTS

In this present study two ethnomedicinal plants parts Mahaneem leaves (*Melia azedarach*) and Chirata or bitter stick leaves and stems (*Swertia chirata*) aqueous extract were prepared for *in vitro* anthelmintic activity study at different concentration. *In vitro* study were conducted against *Haemonchus contortus* eggs by egg hatch assay (EHA) and against adult stage of *Haemonchus contortus* by adult motility inhibition test (AMIT).

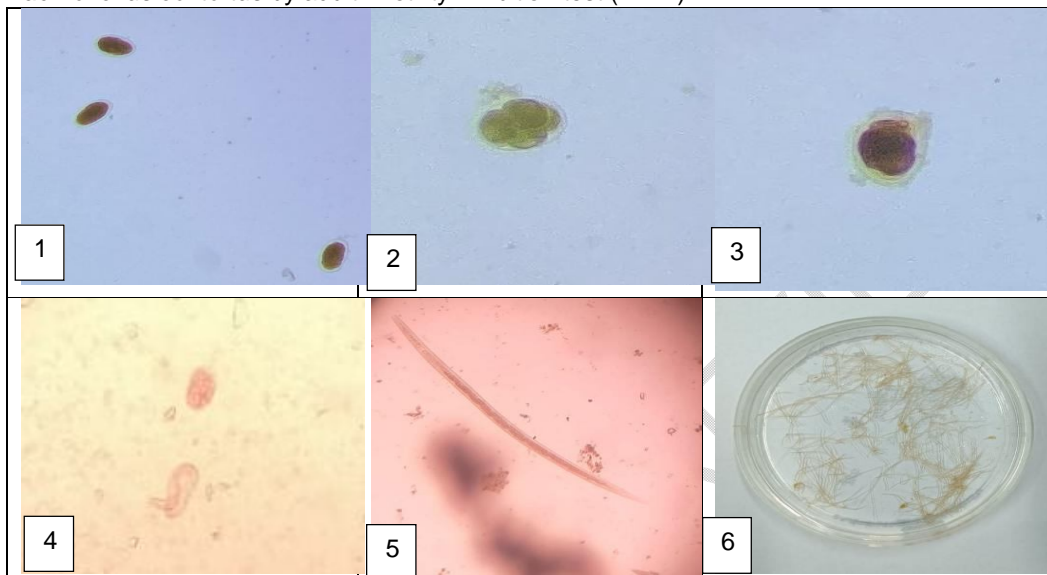


Fig.(1-6): 1. unhatched eggs of *Haemonchus contortus* treated with Chirata extract (50mg/ml); 2. Morula stage of *Haemonchus contortus* egg treated with Mahaneem extract (25 mg/ml); 3. unhatched larve stage 1 (L1) of *Haemonchus contortus* with uneven shaped egg shell; 4. Newly hatched L1 and unhatched egg of *Haemonchus contortus* in Chirata extract (10 mg/ml); 5. Larvae stage 2 (L2) of *Haemonchus contortus* in Mahaneem extract (5mg/ml) after 48 hours 6. Adult active motile *Haemonchus contortus* collected for experiment.

The result revealed that Chirata leave extract have better efficacy against both eggs and adult compare to Mahaneem leave extract. In EHA, chirata extract efficacy @ 50 mg, 25 mg and 10 mg/ml were 85.599 ± 2.389 , 60.180 ± 0.878 , 39.954 ± 0.690 respectively more compare to Mahaneem at same concentration with 77.442 ± 0.963 , 54.178 ± 0.848 , 35.898 ± 1.328 respectively (Table 1 and Fig.7). At the dose rate of 50 mg and 25 mg concentration, Chirata extract more statistically significant ($p < 0.05$) than Mahaneem extract. But at 5 mg/ml to 1 mg/ml concentration Mahaneem shown more efficacy than Chirata and statistically significant only observed at 5 mg/ml concentration.

Concentration	Extract
---------------	---------

Table 1. Mean efficacy (percentage \pm S.E) of aqueous extract of *Melia azedarach* and *Stewaria chirata* on *Haemonchus contortus* egg hatching inhibition.

(mg/ml)	Mahaneem leaves	Chirata whole plant	p value
50 mg	77.442±0.963	85.599 ± 2.389	p<0.05
25mg	54.178± 0.848	60.180 ± 0.878	p<0.05
10 mg	35.898 ± 1.328	39.954 ± 0.690	p>0.05
5 mg	24.134 ± 0.773	18.295 ± 1.511	p<0.05
2.5 mg	8.437 ± 0.543	7.610 ± 0.561	p>0.05
1 mg	5.015 ± 0.198	4.967 ± 0.151	p>0.05
2 % DMSO	2.44 ± 0.08	3.12 ± 1.07	p>0.05
Albendazole-			
50 µg/ml	100 ± 0.00	100 ± 0.00	p>0.05
20 µg/ml	93.09 ± 1.18	93.40 ± 0.97	

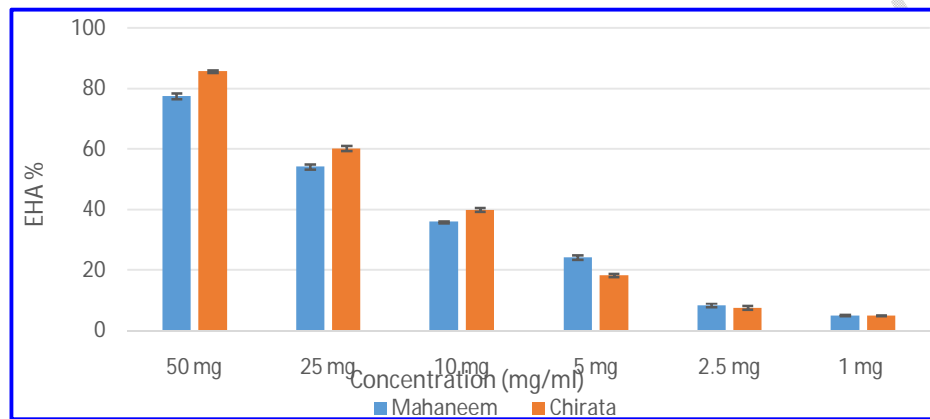


Fig.7: Inhibition of egg hatching (%) in EHA with different concentration of Mahaneem and Chirata extracts

In AMIT, Chirata shows statistical significantly ($p < 0.05$) more efficacy at the 50 mg/ml and 25 mg/ml than Mahaneem (Table 2 and Fig.8), but at the concentration of 10 mg/ml Mahaneem shows better efficacy (38.88 ± 2.22) than Chirata (31.11 ± 2.22). At the 50 mg/ml concentration, after 10 hours experiment for AMIT, Chirata extract shows highest efficacy with 82.22 ± 2.22 percent compare to Mahaneem with 57.77 ± 2.22 percent.

Table 2. Mean efficacy (percentage±S.E.) of aqueous extract of *Melia azedarach* and *Stewaria chirata* on adult *Haemonchus contortus* motility inhibition.

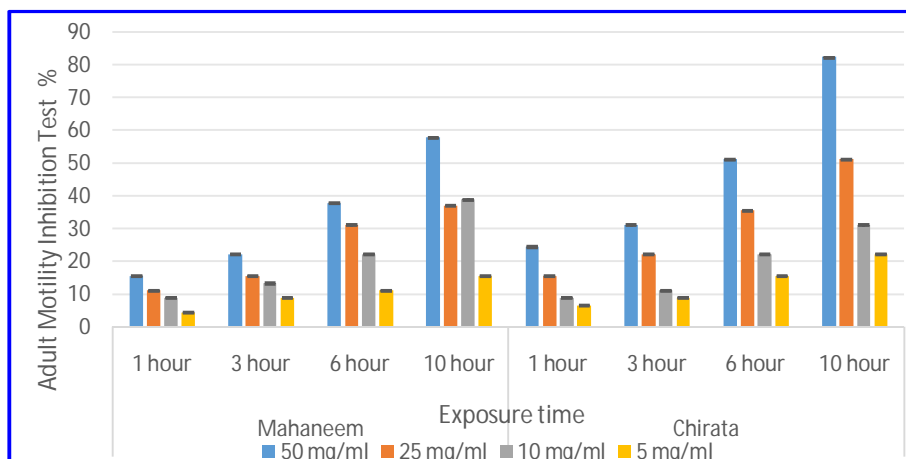


Fig.8. Adult Motility Inhibition of *Haemonchus contortus* with Mahaneem and Chirata extract

4. DISCUSSION

Chemical analysis of the extracts from the *Melia azedarach* revealed the presence of tannins, phenolic compounds, flavonoids, alkaloids, saponins and steroids (Dantas et al., 2000; Maciel et al., 2006; Sharma and Paul., 2013). Tannins are compounds noted for having anthelmintic

Extract name	Concentration (mg/ml)	Time post exposure			
		1 hour	3 hours	6 hours	10 hours
Chirata	50	24.44 ± 2.22	31.11 ± 2.22	51.11 ± 2.22	82.22 ± 2.22
Whole plant	25	15.55 ± 2.22	22.2 ± 2.22	35.55 ± 2.22	51.11 ± 2.22
	10	8.88 ± 2.22	11.11 ± 2.22	22.22 ± 2.22	31.11 ± 2.22
	5	6.66 ± 0.00	8.88 ± 2.22	15.55 ± 2.22	22.22 ± 2.22
	Mahan- eem	50	15.55 ± 2.22	22.22 ± 2.22	37.77 ± 2.22
leave	25	11.11 ± 2.22	15.55 ± 2.22	31.11 ± 2.22	37.77 ± 2.22
	10	8.88 ± 2.22	13.33 ± 0.00	22.22 ± 2.22	38.88 ± 2.22
	5	4.44 ± 2.22	8.88 ± 2.22	11.11 ± 2.22	15.55 ± 2.22
	PBS	0.00 ± 0.00	0.00 ± 0.00	0.00 ± 0.00	0.00 ± 0.00
2 % DMSO	0.00 ± 0.00	0.00 ± 0.00	0.00 ± 0.00	0.00 ± 0.00	
Albendazole (0.20 mg/ml)	100 ± 0.00	100 ± 0.00	100 ± 0.00	100 ± 0.00	

properties. Tannins in the extracts could be the active component affecting the eggs and larvae of *Haemonchus contortus* (Athanasiadou et al., 2001) and they may operate through binding to free proteins, which lowers nutrient a viability and leads to larval mortality by starvation, or attaching to the larval cuticle, abundant inglycoproteins, resulting in death. Alkaloid can influence the central nervous system, resulting in paralysis of the parasite and subsequently death (Roy et al., 2010), whereas saponin alters the permeability of the parasite's cell membrane, leading to vacuolization, tegument disintegration and finally death (Melzig et al., 2001). Flavonoid (isoflavones) blocks the glycolysis enzyme, disrupts calcium balance, hinders Nitrous Oxide function and leads to the parasite's eventual death (Steppek et al., 2006), while exhibiting low toxicity in mammalian animal hosts. Akhtar and Riffat (1984) assessed the effectiveness of *Melia azedarach* in combating gastrointestinal nematodes in goats. They have indicated a 99.4 ± 12 decrease in EPG in animals treated with *Melia azedarach* fruit powder at a dosage of 30 mg/kg. Falbo et al. (2008) studied gastrointestinal nematodes in sheep, achieving an efficiency of 33.2%. Squires et al. (2010) indicated that in small ruminants, the rumen might act as a storage site, delaying the movement of the anthelmintic treatment and thereby extending *Haemonchus contortus*'s exposure to the active ingredient. The aqueous and hydroalcoholic extracts from the *Melia azedarach* leaves inhibited 99.4% and 100% of egg hatching, and fully stopped larval development at a concentration of 12.5 mg/ml respectively (Kamaraj et al., 2010).

Khanal et al. (2014) noted that *Swertia chirata* is also effective in fighting intestinal worms. The aqueous and hydroalcoholic extracts from the leaves blocked 99.4% and 100% of egg hatching, and completely prevented larval development at a concentration of 12.5 mg/ml respectively (Kamaraj et al., 2010). Iqbal et al., (2006) stated that in vitro investigation into the anthelmintic characteristics of *Swertia chirata* showed that at a concentration of 25 mg/ml, the crude aqueous extract from the entire *Swertia chirata* plant displayed an anthelmintic effect on live *Haemonchus contortus*. PaezLeon et al., (2022) observed an 85.88% reduction in the hatching of *Haemonchus contortus* eggs at a concentration of 20 mg/ml after 48 hours of exposure. In a study, goats was given crude powdered and aqueous extracts of *Swertia chirata* at a dosage of 500 mg/kg body weight, orally for seven continuous days and results showed that *Swertia chirata* demonstrated considerable anthelmintic effectiveness against gastrointestinal nematodes namely *Bunostomum* spp., *Trichostrongyles* spp., *Oesophagostomum* spp., and *Haemonchus* spp. account for about 70 to 90 percent (Jain and Sahni, 2009).

5. CONCLUSION:

It concluded that both Mahaneem (*Melia azedarach*) and Chirata (*Swertia chirata*) have the anthelmintic activity against *Haemonchus contortus* at different concentration and both can potentially be effective against *Haemonchus contortus* and other GINs in small ruminants when administered properly. However, these plant's anthelmintic activity on gastrointestinal nematodes in small ruminants remains to be clarified by *in vivo* experiments.

Disclaimer (Artificial intelligence)

Author(s) hereby declare that NO generative AI technologies such as Large Language Models (ChatGPT, COPILOT, etc.) and text-to-image generators have been used during the writing or editing of this manuscript.

REFERENCES

1. Akhtar MS and Riffat S. Evaluation of *Melia azedarach* Linn. fruit (Bakain) against *Ascaridia galli* infection in chickens. "Pakistan Veterinary Journal. 1985;5: 34-37.
2. Athanasiadou S, Kyriazakis I, Jackson F, Coop R. Direct anthelmintic effects of condensed tannins towards different gastrointestinal nematodes of sheep: In vitro and in vivo studies. *Vet. Parasitol.* 2001;99: 205–219. doi: 10.1016/S0304-4017(01)00467-8.
6. Bentley R, Trimen H. Medicinal Plants. London. 1980; J and A Churchill.
3. Cala AC, Chagas ACS, Oliveira MCS, Matos AP, Borges LMF, Sousa LAD, Souza FA, Oliveira GP. In vitro Anthelmintic effect of *Melia azedarach* L. and *Trichilia clausenii* C. against sheep gastrointestinal nematodes. *Experimental Parasitology.* 2012;130(2):98-102, <https://doi.org/10.1016/j.exppara.2011.12.011>.
4. Chagas ACS. Medicinal plant extracts and nematode control. *CAB Rev.* 2015;10(8):1–8. doi: <http://dx.doi.org/10.1079/PAVSNNR201510008>.
5. Coles GC, Bauer C, Borgsteede FHM, Geerts S, Klei TR, Taylor MA, Waller PJ. World Association for the Advancement of Veterinary Parasitology (W.A.A.V.P.) Methods for the detection of anthelmintic resistance in nematodes of veterinary importance. *Vet. Parasitol.* 1992;44:35–44.
7. Dantas DA, Maganha M, Beretta TE, Nozu P, Pereira G, Da S, Matias R, Solon S, Resende U, Koller WW, Gomes A. Estudo fitoquímico dos frutos de *Melia azedarach* L. (Cinamomo, Meliaceae). In: Encontro de Pesquisa e Iniciação Científica da Uniderp, Campo Grande. UNIDERP, Campo Grande, 2000:119–120
8. Falbo MK, Sandini IE, Helcya MI, Fávaro JL, Santos CE, Bastos S, Rodigheri D, Guzzo D. Atividade anti-helmíntica do fruto da *Melia azedarach* em cordeiros naturalmente infectados com nematódeos gastrintestinais. *Ciências Agrárias.* 2008;29, 881–886.
9. Gradé JT, Arble BL, Weladji RB, Van Damme P. Anthelmintic efficacy and dose determination of *Albizia anthelmintica* against gastrointestinal nematodes in naturally infected Ugandan sheep. *Vet Parasitol* 2008;157(3):267–74.
10. Hammond JA, Fielding D, Bishop SC. Prospects for plant anthelmintics in tropical veterinary medicine. *Vet Res Commun* 1997;21(3): 213–28.
11. Iqbal Z, Lateef M, Khan MN, Jabbar, Akhtar MS. Anthelmintic activity of *Swertia chirata*

- against gastrointestinal nematodes of sheep. *Fitoterapia*. 2006;77:463-5. PMID: 16815639.
12. Jain S, Sahni YP. Anthelmintic activity of *Swertia chirata* sees against gastrointestinal endoparasitic infestation in Goats. *Journal of Veterinary Pharmacology and Toxicology*. 2009;8(1-2):56-58
 13. Joshi P, Dhavan V. *Swertia chirata*-an overview. **Current Science**. 89(4); 2005: 635-640
 14. Kamaraj C, Rahuman AA, Bagavan A, Mohamed MJ, Elango G, Rajakumar G, Zahir AA, Santhoshkumar T, Marimuthu S. Ovicidal and larvicidal activity of crude extracts of *Melia azedarach* against *Haemonchus contortus* (Strongylida). *Parasitol Res*. 2010;106(5):1071-7. doi:10.1007/s00436-01017500.Epub2010Feb23. PMID:20177909.
 15. Khanal S, Shakya N, Nepal N, Pant D. *Swertia chirata*: The Himalayan herb. *Int J Appl Sci Biotechnol*. 2014;2(4):389-92.
 16. KumarKPS, BhowmikD, Chiranjib, Biswajit, ChandiraM. *Swertia chirata*: A traditional herb and its medicinal uses. *J. Chem. Pharm. Res.*, 2010, 2(1): 262-266.
 17. Kumarasingha R, Palombo EA, Bhave M, Yeo TC, Lim DSL, Tu CL, Shaw JM, Boag PR. Enhancing a search for traditional medicinal plants with anthelmintic action by using wild type and stress reporter *Caenorhabditis elegans* strains as screening tools. *International Journal for Parasitology* . 2014;44: 291–298.
 18. Lu H, Tang J, Sun K, Yu X. Identification of a New Badnavirus in the Chinaberry (*Melia azedarach*) Tree and Establishment of a LAMP-LFD Assay for Its Rapid and Visual Detection. *Viruses*. 2021;13(12):2408. doi:10.3390/v13122408. PMID: 34960677; PMCID: PMC8704090.
 19. Maciel MV, Morais SM, Bevilaqua CM, Camurça-Vasconcelos AL, Costa CT, Castro CM. Ovicidal and larvicidal activity of *Melia azedarach* extracts on *Haemonchus contortus*. *Vet. Parasitol*. 2006;140(1-2): 98-104. doi:10.1016/j.vetpar.2006.03.007.
 20. McCorkle CM. Back to the future: lessons from ethnoveterinary RD&E for studying and applying local knowledge. *Agric Hum Values* 1995;12(2):52–80.
 21. McRae KM, Stear MJ, Good B, Keane OM. The host immune response to gastrointestinal nematode infection in sheep. *Parasite Immunol*. 2015; 37: 605–613.
 22. Melzig MF, Bader G, Loose R. Investigation of the mechanism of membrane activity of selected triterpenoid saponins. *Planta Med*. 2001; 67(1):43-48.
 23. Nakatani M, Huang RC, Okamura H, Iwagawa T, Tadera K, Huang RC. Degraded limonoids from *Melia azedarach* *Phytochemistry*. 1998; 49, 1773–1776.
 24. Páez-León SY, Carrillo-Morales M, Gómez-Rodríguez O, López-Guillén G, Castañeda Ramírez GS, Hernández-Núñez E, Wong-Villarreal A, Aguilar-Marcelino L. Nematicidal activity of leaf extract of *Moringa oleifera* L. Against *Haemonchus contortus* and *Nacobbus aberrans*. *J Helminthol*. 2022; doi: 10.1017/S0022149X22000025. PMID: 35195061.
 25. Rabel B, McGregor R, Douch PGC. Improved bioassay for estimation of inhibitory effects of ovine gastrointestinal mucus and anthelmintics on nematode larval migration. *Int J Parasitol*. 1994; 24:671–676
 26. Roy H, Chakraborty A, Bhanja S, Nayak BS, Mishra SR, Ellaiah P. Preliminary investigation and anthelmintic activity of *Acatospermum hispidum*. 2010; 2(5):217-221.
 27. Sharma D, Paul Y. Preliminary and Pharmacological Profile of *Melia azedarach* L.: An Overview. *Journal of Applied Pharmaceutical Science*. 2013; 3(12): 133-138.
 28. Sharma LD, Bhaga HS, Srivastava PS. In vitro anthelmintic screening of indigenous medicinal plants against *Haemonchus contortus* (Rudolphi, 1803) Cobbold, 1898 of sheep and goats. *Indian J Anim Res* 1971; 5(1):33–38.
 29. Spellberg B, Hansen GR, Kar A, Cordova CD, Price LB, Johnson JR. Antibiotic Resistance in Humans and Animals. *NAM Perspectives*. Discussion Paper, National Academy of Medicine, Washington, DC. 2016. <https://doi.org/10.31478/201606d>
 30. Squires JM, Foster JG, Lindsay D, Claudell DL, Zajac AM. Efficacy of an orange oil emulsion as an anthelmintic against *Haemonchus contortus* in gerbils (*Meriones unguiculatus*) and in sheep. *Veterinary Parasitology*. 2010; 172, 95–99
 31. Stepek G, Lowe AE, Buttle DJ, Duce IR, Behnke JM. In vitro and in vivo anthelmintic efficacy of plant cysteine proteinases against the rodent gastrointestinal nematode *Trichuris muris*. *Parasitology*. 2006; 132:681-689.

32. Taylor JLS, Rabe T, McGaw LJ, Jäger AK, Van Staden J. Towards the scientific validation of traditional medicinal plants. *Plant Growth Regul* 2001;34 (1):23 - 37.
33. Villegas MMH, Borges-Argáez R, Rodríguez-Vivas RI, Torres-Acosta JFJ, Méndez González M, Cáceres-Farfán M. Ovicidal and larvicidal activity of the crude extracts from *Phytolacca icosandra* against *Haemonchus contortus*. *Vet Parasitol.* 2011;179(1):100–6.
34. Vinoth S, Rajeshkanna P, Gurusaravanan P, Jayabalan N. Evaluation of phytochemical, antimicrobial and GC-MS analysis of extracts of *Indigofera trita* L. f. *Spp. Subulata* (Vahl ex Poir). *Int J Agric Res.* 2011;6:358-67.
35. Waller PJ. Anthelmintic resistance. *Vet Parasitol.* 1997;72:391-412. [https://doi.org/10.1016/S0304-4017\(97\)00107-6](https://doi.org/10.1016/S0304-4017(97)00107-6).
36. Zarlenga DS, Hoberg EP, Tuo W. Chapter Five - The Identification of *Haemonchus* Species and Diagnosis of Haemonchosis, Editor(s): Robin B. Gasser, Georg Von Samson-Himmelstjerna, *Advances in Parasitology.* Academic Press. 2016; 93:145-180, <https://doi.org/10.1016/bs.apar.2016.02.023>.

UNDER PEER REVIEW