

Exploring the Habit of Denture Wearing in a Sample of the Lebanese Population

Abstract

Background: Many people use their dentures continuously for aesthetic and functional reasons. The aim of this study was to evaluate the denture's continuous wearing in a sample of Lebanese population. **Material and Methods:** Two hundred ninety (161 women, 129 men; age range 40-80 years) were selected for this study and their denture's wearing habits were divided into three groups: a) group 1: regular nighttime denture removal, b) group 2: continuous denture use (daily and nighttime wearing), and c) group 3: irregular denture use. Descriptive statistics for patient age and gender and denture continuous wearing were calculated, and percent distributions were reported. **Results:** Among the 290 patients, 85 (29.31%) wear their dentures continuously (group 2), 138 (47.58%) take them out at night (group 1), and 67 (23.10%) wear them irregularly (group 3). **Conclusion:** According to the present study, approximately one-third of patients consistently wear their dentures.

Keywords: Denture, Lebanese, population.

1. Introduction

Dentures are removable oral appliances used by patients to replace missing teeth for both cosmetic/social and functional reasons (AlSaggaf et al., 2024). In fact, by giving the patients the confidence to eat, talk, and laugh in social settings, they enhance their general quality of life (AlSaggaf et al., 2024; Satishkumar et al., 2021; Regis et al., 2013).

Back in 1967, the Academy of Denture Prosthetics recommended the night removal of dentures, and from then on, many studies focused on the side effects of the continuous wearing of dentures and concluded that complete dentures and removable partial dentures should not be worn continuously (Tautin, 1978).

Numerous articles discussed the connection between tissue alterations and continuous denture wear (Kouadio et al., 2022; Newton, 1962; Budtz-Jørgensen, 1974; Aoun and Cassia, 2016).

Comment [H1]: Is the classification given before or after the study? If it is before, how does the author classify the wearing habit into 3 groups? Random sampling? If it is after, then what are the assessments/data collection done after the classification?

Comment [H2]: Reference is too old

Butcher and Mitchell noticed that after a week, there were noticeable alterations in the palatal glands of rhesus monkeys whose palates were covered, and the acini of these glands completely disappeared after three weeks and were replaced by dense connective tissue (Butcher and Mitchell, 1968). On the other hand, other researchers found that the degree of keratinization of the oral mucosa covered by dentures is inversely proportional to the amount of time dentures are worn; for them, keratinization was increased when dentures were removed regularly at night and the rest allowed the oral mucosa to recover (Sillevis Smitt, 1973; Al-Ani et al., 1966). Additionally, continuous denture wear has been found to be substantially linked to inflammatory changes of the denture-bearing mucosa (Newton, 1962; Budtz-Jørgensen, 1974; Aoun and Cassia, 2016; Aoun et al., 2015; Kabawat et al., 2014; Ribeiro et al., 2024). This was explained by the fact that placing the oral mucosa in constant contact with the denture base decreases the saliva's protective function and stops the mucosa from receiving enough oxygen, which lowers the mucosa's resistance to mechanical and microbial aggressions, mainly fungi, the most important of which are *Candida albicans* (Newton, 1962; Budtz-Jørgensen, 1974; Aoun et al., 2015). Furthermore, a link has been found between continuous denture wearing and bone resorption (Ozan et al., 2013). Because of the continuous pressure on the soft tissues, which is subsequently transferred to the bone, many authors claim that wearing dentures day and night causes the remaining ridges to atrophy (Kouadio et al., 2022; Ozan et al., 2013).

Comment [H3]: Should have latest reference.

The aim of the present study was to evaluate the denture's continuous wearing in a sample of Lebanese denture wearers.

Comment [H4]: To elaborate further and explained why this study has to be done among Lebanese and what impact is this study going to be.

2. Materials and Methods

This study was carried out in compliance with the Helsinki Agreement on Human Research. It was approved by the scientific committee of the Faculty of Dental Medicine of the Lebanese University, and the patients were informed that their data might be anonymously used for research purposes at a later stage, and their consent was obtained. Patients who were: 1) between the ages of 40 and 80; and 2) wearing an acrylic denture for more than a year were included in this study.

Comment [H5]: Why is it only the age 40-80 is included as the inclusion criteria?

Comment [H6]: Is there any exclusion criteria for this study?

Two hundred ninety patients, 161 women and 129 men, meeting the inclusion criteria were selected, and their habit of denture's wearing was classified and noted as follows:

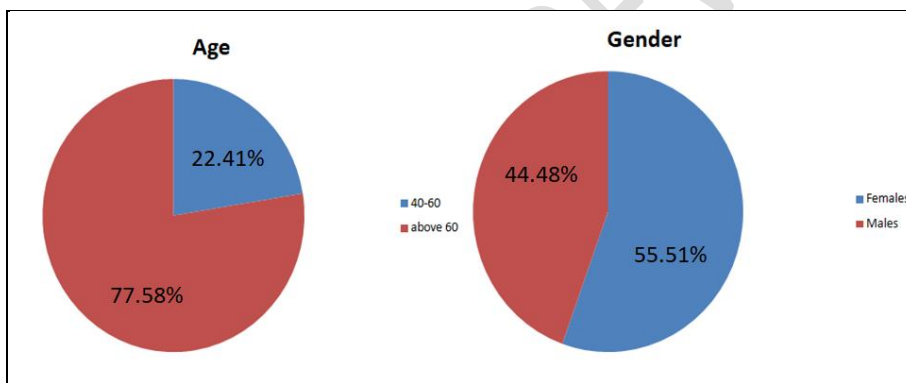
- Group 1: regular nighttime denture removal
- Group 2: continuous denture use (daily and nighttime wearing)
- Group 3: irregular denture use.

Descriptive statistics for patient age and gender and denture continuous wearing were calculated, and percent distributions were reported.

Comment [H7]: Any software of data analysis used?

3. Results

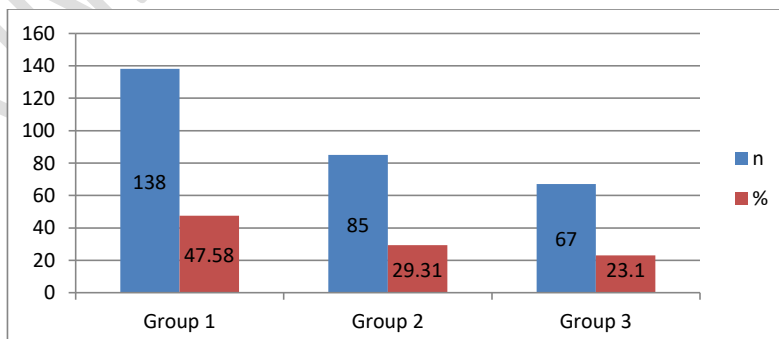
This sample of Lebanese population consisted of 290 acrylic denture wearers, 161 females (55.51%) and 129 males (44.48%). The patient's age ranged between 40 and 80 years, with a mean of 64.25 years; out of the total 290 patients, 65 (22.41%) aged between 40 and 60 years, whereas the rest, 225 (77.58%), were older than 60 (Graph 1).



Graph 1: Percentage distribution of sample according to age and gender

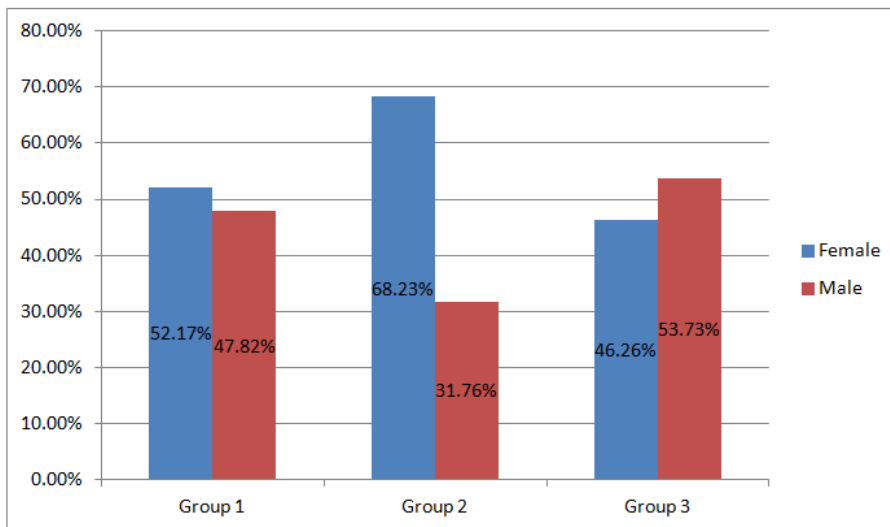
Comment [H8]: This is not a graph but it is a pie chart.

Of the 290 patients in this study, 85 (29.31%) wear their dentures continuously (group 2), 138 (47.58%) take them out at night (group 1), and 67 (23.10%) wear them irregularly (Graph 2).



Graph 2: Percentage distribution of status of denture wearing

In terms of gender, women made up 52.17% (72 out of 138) of the patients in group 1, 68.23% (58 out of 85) in group 2, and 46.26% (31 out of 67) in group 3 (Graph 3).



Graph 3: Percentage distribution of status of gender in each group

4. Discussion

Since preventive dentistry and health care in general are crucial for edentulous patients, dentures that rely on the underlying tissues for support must be kept in the best possible condition. It has been widely admitted that the denture continuous use (regular night and day wearing) can lead to tissue alterations and inflammatory changes of the denture-bearing mucosa and weaken the mucosa's defenses against mechanical and microbiological aggressions by interfering with saliva's protective role (Tautin, 1978; Aoun and Cassia, 2016). For that, and to keep these tissues healthy, patients should be advised on meticulous plaque control through a satisfactory denture cleaning (Szalewski et al., 2017; Ribeiro et al., 2019) and to avoid wearing dentures continuously; instead, they should be taken off at night or for extended periods of time every 24 hours (Tautin, 1978; Aoun and Cassia, 2016; Szalewski et al., 2017). While some dentists emphasize the significance of this habit to their patients, many do not advise them of its necessity.

Comment [H9]: Usually the n and % is not presented separated in different graph. % only stated in the n graph. Different bar of the graph usually because there is different group. The graph has causing confusion. Should redo the graph for better presentation.

Comment [H10]: Should present more such as the impact of the result to the broader view of other studies. As support from other studies to this study. Any limitation from this study will help for further study to be done.

Finally, there are certain limitations to the present study, which aims to assess the continuous denture usage in a sample of the Lebanese population. Because of the limited number of patients evaluated, definite conclusions must be delayed until future research validates these findings.

5. Conclusion

According to the present study, approximately one-third of patients consistently wear their dentures. Patients should be dissuaded from continuously wearing their dentures to avoid many related side effects.

Comment [H11]: Should answer the aim of study and the result of one-third consistently wearing denture should be presented in the result as further analysis so that the conclusion showed better impact and answer the aim of this study.

References

1. Al-Ani, S., Shklar, G., & Yurkstas, A. A. (1966). The effect of dentures on the exfoliative cytology of palatal and buccal oral mucosa. *The Journal of prosthetic dentistry*, 16, 513–521. [https://doi.org/10.1016/0022-3913\(66\)90055-2](https://doi.org/10.1016/0022-3913(66)90055-2).
2. AlSaggaf, A. U., Alqutub, A., Almasri, Z., Khalifah, F., Khuzaee, F., Aljuaid, A., et al. (2024). Oral health-related quality of life improvement after treatment with fixed and removable dental prostheses. *Cureus*, 16(10), e71013. <https://doi.org/10.7759/cureus.71013>.
3. Aoun, G., & Cassia, A. (2016). Evaluation of denture-related factors predisposing to denture stomatitis in a Lebanese population. *Materia socio-medica*, 28(5), 392–396. <https://doi.org/10.5455/msm.2016.28.392-396>.
4. Aoun, G., Cassia, A., & Berberi, A. (2015). Effectiveness of a chlorhexidine digluconate 0.12% and cetylpyridinium chloride 0.05% solution in eliminating *Candida albicans* colonizing dentures: a randomized clinical in vivo study. *The journal of contemporary dental practice*, 16(6), 433–436. <https://doi.org/10.5005/jp-journals-10024-1702>.
5. Budtz-Jørgensen, E. (1974). The significance of *Candida albicans* in denture stomatitis. *Scandinavian journal of dental research*, 82(2), 151–190. <https://doi.org/10.1111/j.1600-0722.1974.tb00378.x>.
6. Butcher, E. O., & Mitchell, O. G. (1968). Effect of dentures and astringents on palatal mucosa. *The Journal of prosthetic dentistry*, 20(1), 3–7. [https://doi.org/10.1016/0022-3913\(68\)90206-0](https://doi.org/10.1016/0022-3913(68)90206-0).

7. C Satishkumar, C. S., Nair, S. J., Joseph, A. M., Suresh, S., Muthupandian, I., Kumaresan, S., et al. (2021). Relationship between perceived chewing ability, oral health related quality of life and depressive symptoms among completely edentulous individuals. *Indian journal of dental research: official publication of Indian Society for Dental Research*, 32(2), 211–215. https://doi.org/10.4103/ijdr.ijdr_1141_20.
8. Kabawat, M., de Souza, R. F., Badaró, M. M., de Koninck, L., Barbeau, J., Rompré, P., et al. (2014). Phase 1 clinical trial on the effect of palatal brushing on denture stomatitis. *The International journal of prosthodontics*, 27(4), 311–319. <https://doi.org/10.11607/ijp.3844>.
9. Kouadio, A. A., Fabienne, J., Soueidan, A., Volteau, C., Koffi, N. J., Djérédou, K. B., et al. (2022). Effects of wearing removable dentures and aging on palatal mucosa blood flow by laser doppler. *Journal of Indian Prosthodontic Society*, 22(2), 161–168. https://doi.org/10.4103/jips.jips_292_21.
10. Newton, A. V. (1962). Denture sore mouth. *British Dental Journal*, 112, 357–360.
11. Ozan, O., Orhan, K., Aksoy, S., Icen, M., Bilecenoglu, B., & Sakul, B. U. (2013). The effect of removable partial dentures on alveolar bone resorption: a retrospective study with cone-beam computed tomography. *Journal of prosthodontics : official journal of the American College of Prosthodontists*, 22(1), 42–48. <https://doi.org/10.1111/j.1532-849X.2012.00877.x>.
12. Regis, R. R., Cunha, T. R., Della Vecchia, M. P., Ribeiro, A. B., Silva-Lovato, C. H., & de Souza, R. F. (2013). A randomised trial of a simplified method for complete denture fabrication: patient perception and quality. *Journal of oral rehabilitation*, 40(7), 535–545. <https://doi.org/10.1111/joor.12063>.
13. Ribeiro, A. B., de Araújo, C. B., Silva, L. E. V., Fazan-Junior, R., Salgado, H. C., Ribeiro, A. B., et al. (2019). Hygiene protocols for the treatment of denture-related stomatitis: local and systemic parameters analysis - a randomized, double-blind trial protocol. *Trials*, 20(1), 661. <https://doi.org/10.1186/s13063-019-3854-x>.
14. Ribeiro, A. B., Pizzio, P. G., Clemente, L. M., Aguiar, H. C., Poker, B. C., Silva, A. A. M. E., et al. (2024). Strategies for preventing and treating oral mucosal infections associated with removable dentures: a scoping review. *Antibiotics (Basel, Switzerland)*, 13(3), 273. <https://doi.org/10.3390/antibiotics13030273>.

15. Sillevis Smitt, P. A. (1973). Palatal epithelial keratinization: prosthetic applications. *The Journal of prosthetic dentistry*, 30(4 Pt 2), 489–490.
16. Szalewski, L., Pietryka-Michałowska, E., & Szymańska, J. (2017). Oral hygiene in patients using removable dentures. *Polish Journal of Public Health*, 127, 28–31. <https://doi.org/10.1515/pjph-2017-0006>.
17. Tautin F. S. (1978). Should dentures be worn continuously? *The Journal of prosthetic dentistry*, 39(4), 372–374. [https://doi.org/10.1016/s0022-3913\(78\)80149-8](https://doi.org/10.1016/s0022-3913(78)80149-8).

UNDER PEER REVIEW