

Case report

Conservative management of a radicular cyst associated with a pulpectomised primary molar followed by bonded space regainer for eruption of premolar– A case report

ABSTRACT

Aim: The aim of this case report is to document a rare case of a large radicular cyst associated with a pulpectomised primary molar managed by decompression and eruption of the blocked out succedaneous tooth after placement of a NiTi bonded space regainer .

Background: Pulpectomy is considered as a conservative treatment option for pulpally involved deciduous teeth. Although it is safe, there are certain undesirable consequences, one of which being odontogenic cysts.

Case description: A radicular cyst associated with a pulpectomised mandibular primary molar in a 10-year-old male patient is described here along with the radiographic and histopathological findings. To avoid mandibular bone fracture and to preserve the succedaneous permanent teeth, the radicular cyst was treated by extraction of the involved primary tooth and decompression of the lesion. The case was followed up for a period of one year and the eruption of blocked out succedaneous tooth was facilitated by placing NiTi bonded space regainer . 3 mm of the lost space was regained within 8 weeks using the NiTi bonded space regainer.

Conclusion: Extraction of the involved primary teeth followed by decompression of the cyst and preservation of the permanent teeth appeared to be the most suitable treatment option for large lesions in a developing dentition.

Clinical significance: Non-invasive treatment option should be considered for the management of radicular cysts in pediatric patients. NiTi bonded space regainer is an efficient treatment modality for regaining lost space.

Keywords: Pulpectomised primary teeth, Radicular cyst, Decompression, Ni Ti bonded space regainer

INTRODUCTION

Primary teeth with deep caries and pulpal involvement are managed by vital or non-vital pulp therapies. But studies show an association between endodontically treated primary molars and cyst formation. These cysts can either be radicular cysts or inflammatory dentigerous cysts of corresponding premolars (1,2). Other negative outcomes reported are, deviation of permanent tooth bud, delay in eruption, malposition and enamel opacities in successor teeth (2).

Radicular cysts involving primary teeth are found in the inter radicular area and around the roots in contrast to its periapical location in permanent teeth. In a systematic review from 1927 to 2004, Nagata *et al.* summarized that only 112

cases of radicular cysts were derived from primary dentition,(3) of which 56% were thought to have resulted from pulp therapy (4).

Periradicular cysts that are associated with endodontically treated primary molars seem to show specific clinical features such as large size, rapid growth, buccal expansion, and displacement of succedaneous teeth.(5) Treatment options for radicular cysts include total enucleation in the case of small lesions, marsupialisation or decompression of larger cysts, or a combination of the two techniques. Inflammatory cysts do not recur after adequate treatment (6). Normal alignment of the displaced succedaneous teeth will occur spontaneously, in most cases even if the initial position was highly unfavourable (7). We are reporting a rare case of radicular cyst associated with a pulpectomised primary molar managed by decompression and use of NiTi bonded space regainer to facilitate the eruption of blocked out succedaneous tooth.

CASE DESCRIPTION

A boy aged 10 years reported to the department OPclinic with a swelling in the lower jaw on the left back teeth region noticed since 2 days. According to the patient's dental history, at the age of four, he had a pulpectomy on his lower left primary second molar from a dental clinic. On extraoral examination, a non-tender, immobile, diffuse bony hard swelling measuring 4.5 x 2.5 cm was observed on the left side of body of the mandible (Figure 1a). Intraorally, there was an expansion of the buccal cortical plate, extending from distal aspect of 73 to mesial aspect of 36(Figure 1b). The erupted 34 was rotated distally and exhibited slight pathological mobility. The orthopantomogram illustrated a massive unilocular radiolucency with a well-defined border extending from the distal aspect of 33 to the developing mesial root of 37 and inferiorly extending to the lower border of mandible. A radiopacity was noticed in the pulp chamber of 75, suggestive of previous pulp therapy (Figure 1c).



Fig. 1 a. Preoperative extraoral photograph showing diffuse swelling on the body of the mandible on the left side.



Fig. 1 b. Preoperative intraoral photograph showing expansion of the buccal cortical plate, extending from distal aspect of 73 to mesial aspect of 36.

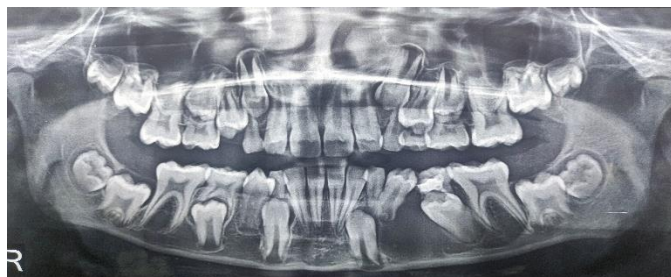


Fig. 1 c. Orthopantomogram showing a unilocular radiolucency with a well-defined border extending from the distal aspect of 33 to developing mesial root of 37 and inferiorly extending to lower border of mandible.

Upon aspiration, a pale yellow fluid was obtained, containing neutrophils, sporadic dispersed macrophages, and a few lymphocytes. No atypical cells were found.

Based on the patient's history, clinical and radiographic findings, a provisional diagnosis of radicular cyst was given after aspiration cytology. Extraction of involved primary tooth and decompression of cyst was planned as a conservative approach to prevent any damage to the permanent tooth buds. Preoperative blood tests were conducted, and all indices were within normal ranges.

The cystic cavity was opened and the cystic fluid was drained following the extraction of 75 under local anesthesia. The lining of the cyst beneath was soft and thick. For histological analysis, a portion of the cystic lining was incised from the lesion's wall.

Cortical plates were compressed, and the cavity was irrigated with betadine and saline solution. A gauze pack with iodoform was placed in the cystic cavity. Instruction was given to the patient's mother to irrigate the cystic cavity with normal saline twice daily and to maintain oral hygiene.

Histological examination revealed stratified squamous epithelium showing an arcading pattern of proliferation overlying a fibrillary connective tissue stroma. The stroma was having diffuse chronic inflammatory cell infiltrate and numerous forming, formed and engorged blood vessels were seen. The clinical, radiographic, and histologic findings confirmed the diagnosis of the radicular cyst.

One week later, the clinical symptoms had improved, the extraction wound's edges had epithelialized, and 34 became stable. For further decompression of the lesion, a removable appliance with a resin extension into the cystic cavity was inserted after 3 weeks. The patient was recalled for follow-up every 2 weeks for evaluation, and the resin projection was trimmed gradually to allow the eruption of the permanent tooth.

After 4 months, OPG was taken to evaluate cystic lesion and erupting 35. Bone formation was noted in the cystic region and there was further mesial tipping of 36 and distal tipping of 34 which resulted in space deficiency for eruption of 35 (Figure 2a)..

NiT_i bonded space regainer was given and the patient was recalled for follow-up every 2 weeks for evaluation. Up righting of 36 and 34 was achieved and 35 erupted into the gained space (Figure 2b). Orthodontic alignment of the crowded anterior teeth is planned at a later stage.



Fig. 2 a . Orthopantomogram at 4-month follow-up showing healing of the lesion and mesial tipping of 36 , distal tipping of 34 and locked out erupting 35



Fig. 2 b . A 12-month follow-up showing bonded NiTi regainer and erupting 35 with continued root formation.

DISCUSSION

Radicular cysts are uncommon in primary dentition, accounting for just 0.5–3% of all radicular cyst cases in the permanent and primary dentitions. Mass *et al* analyzed primary molars with radiolucent lesions ranging from 4-15 mm in diameter and suggested that radicular cysts associated with primary teeth are not rare, but merely overlooked (8). Goswami *et al* pointed out some reasons for rarity of radicular cyst in primary dentition. They are asymptomatic in nature as the accessory canals in primary teeth drains pulp and interradicular infections and are left unnoticed until detected by routine radiographic examination. The radicular radiolucency associated with primary teeth is usually neglected because of their short life span which usually resolve on their own following the extraction/exfoliation of related tooth. Periapical radiolucency of primary teeth may be misdiagnosed as a periapical granuloma or a dentigerous cyst of the permanent successor due to inadequate pathological investigation after extraction/exfoliation of the primary teeth (9).

An association of cyst development in relation to the mandibular second primary molars cariously affected or endodontically treated has been mentioned in literature (10). The mandibular second primary molar is more closely associated with its successor's follicle and this can more easily facilitate the spread of inflammation in comparison with other primary teeth.

Aetiology for radicular cyst associated with primary teeth is invasion of bacteria from necrotic pulp to the periapical region stimulating the multiplication of epithelial cell rests of Malassez where as in endodontically treated cases, medicaments used for pulp therapy becomes antigenic in combination with tissue protein, eliciting a humoral and cell-mediated immune responses (5). Hill *et al*, Grundy *et al*, Bhat SS *et al*, Elango *et al* have reported cyst cases associated with formocresol as intra canal medicaments(3). Sandhyarani B *et al* (11) and Truong-Nhu-Ngoc *et al*(3) showed cases of cysts involved in primary teeth with a history of endodontic treatment with zinc oxide eugenol and gutta percha (as successor was missing) respectively. The etiology behind the cysts could be antigenic stimulus either because of infection left behind during pulpectomy procedure or the zinc oxide eugenol material. Other materials reported in literature are creosote, iodoform and arsenic oxide. It is controversial as to whether the treatment of dental pulp is a causative factor in the development of radicular cysts of the primary teeth. There are studies contradicting that radicular cysts were not related to the treatment of dental pulp (8,12). In our case, no records were available regarding the pulpectomy procedure or the material used as it was done from another clinic.

Grundy *et al* (5) recorded a time lapse of 5 months to 3 years between the pulp therapy and the detection of buccal bone expansion with an average of 20 months. In this child the cyst was diagnosed after a time period of 6 years since pulpectomy. The swelling went unnoticed as it was asymptomatic.

This study supports the findings of Grundy *et al* and Savage *et al*, that specific clinical features such as large size, rapid growth, buccal expansion, and displacement of succedaneous teeth are associated with cysts seen in relation to endodontically treated primary teeth. Radicular cysts of the primary teeth involving radiolucent areas of more than 20 mm in diameter appear to be rare, and it is possible that pulpal therapeutic agents cause rapid growth of cystic lesions(13). Here, the cyst was 50mm*25 mm size at the time of initial presentation.

Chavan *et al* from their findings and literature suggested criteria for differentiating radicular and dentigerous cysts related to primary teeth. Features of radicular cyst are carious or endodontically treated primary molar; more chances of signs of infection, radiolucency around the roots and furcation area of involved teeth, complete premolar tooth bud looks engulfed in the lesion on OPG. And for dentigerous cyst, no carious lesion with primary molar; severe displacement of involved developing premolar as well as adjacent premolar; radiographically. After excision, lesion looks typically around premolar crown, even if it is displaced (1). In our study, the involved tooth was endodontically treated 75 with expansion of buccal

cortical plate. Premolar tooth bud looked engulfed in the lesion with no displacement as seen on OPG which fulfilled the mentioned criteria for radicular cyst.

Treatment options for a radicular cyst involving primary teeth include extraction of the involved primary tooth or extraction and then decompression of the cyst, enucleation of the lesion or marsupialization. The selection of the most appropriate treatment depends on various factors, including the cyst's location, size, the integrity of the cystic wall, and its proximity to vital anatomical structures. Pei *et al* conducted a retrospective study and concluded that decompression is an effective and less invasive treatment in radicular cysts associated with primary teeth (14).

The cystic lesion in our case was treated with extraction of the pulpectomized primary tooth and decompression of the cyst, rather than enucleation of the entire cystic wall as the margins of the cyst were seen extending to the lower border of mandible. The succedaneous tooth, 35, was seen to be in a favourable position for spontaneous eruption though slightly rotated and locked under the tipped 34 and 36.

Here space had to be regained for facilitating the eruption of the succedaneous tooth, 35. We utilised the shape memory property of NiTi bonded space regainer to regain the lost arch space. The other advantages of this space regainer were single visit chairside procedure, no banding or any other complicated lab procedure, improved patient compliance and easy maintenance of oral hygiene. 3 mm of lost space was regained within 8 weeks, similar to that reported in studies by Jana *et al* and An *et al* (15) (16).

Pei *et al* has reported that all lesions with mean initial area of $3.66 \pm 2.00 \text{ cm}^2$ were reduced after decompression within 2 to 10 months. Mean rate of reduction was $0.77 \pm 0.44 \text{ cm}^2/\text{month}$ and large lesions ($> 3.5 \text{ cm}^2$) had higher reduction rate compared to smaller ones. In our study bone formation in cystic lesion was achieved in 4 months. Mean decompression time in patients < 18 years old is significantly less than that of adults which implies higher osteogenic activity in children (17) (14).

Long-term follow-up of succedaneous teeth after treatment for cysts of primary teeth was recommended by Pei *et al*. In his study, 46% of teeth had root development problems such as ectopic eruptions, wide root canals, insufficient dentin deposition, and root dilacerations upon eruption. In our case, 35 erupted in a slightly rotated position and showed a root dilaceration at the apical third. The child is under follow up and further orthodontic treatment is being planned.

CONCLUSION

Endodontically treated primary teeth should be observed until they are shed as there is a chance for the chronic inflammation in the periapical region leading towards cyst formation. If any signs of failures of pulp therapy, such as periradicular rarefaction, root resorption, and enlarged follicular space of the succedaneous tooth is seen, it should be treated by extraction. Follow-up should be maintained until normal eruption of the succedaneous tooth. Though radicular cysts involving primary teeth are rare, it can be seen associated with non-vital or endodontically treated primary teeth. Extraction of the involved teeth and decompression of the cyst is an effective and less invasive treatment option for radicular cyst involving primary teeth in pediatric patients.

CONSENT

As per international standard or university standard, patients' written consent has been collected and preserved by the author(s).

ETHICAL APPROVAL

As per international standard or university standard guideline participant consent and ethical approval has been collected and preserved by the authors.

ABBREVIATIONS

OP – Out Patient

REFERENCES

1. Chavan A, Dewalwar V, Manekar VS, Wadde K. Cysts in Periradicular Region of Deciduous Molars in Mixed Dentition: Retrospective Study of Five Cases. *Int J Clin Pediatr Dent*. 2014 Dec;7(3):229–35.
2. Asián-González E, Pereira-Maestre M, Conde-Fernández D, Vilchez I, Segura-Egea JJ, Gutiérrez-Pérez JL. Dentigerous Cyst Associated with a Formocresol Pulpotomized Deciduous Molar. *J Endod*. 2007 Apr;33(4):488–92.
3. Truong-Nhu-Ngoc V, Vu-Thai-Lien N, Minh-Hang L, Thanh-Tung D, Thi-Nga V, Pham-The H, et al. Radicular cyst in a primary molar following pulp therapy with gutta percha: A case report and literature review. *J Clin Exp Dent*. 2019;0–0.
4. Talukdar M, Kumar A, Goenka S, Mahajani M, Ambhore M, Tattu V. Management of radicular cyst in deciduous molar: A case report. *J Fam Med Prim Care*. 2020;9(2):1222.
5. Grundy GE, Adkins KF, Savage NW. Cysts associated with deciduous molars following pulp therapy. *Aust Dent J*. 1984 Aug;29(4):249–56.
6. Penumatsa NV, Nallanchakrava S, Muppa R, Dandempally A, Panthula P. Conservative Approach in the Management of Radicular Cyst in a Child: Case Report. *Case Rep Dent*. 2013;2013:1–3.
7. Chiu WK, Sham ASK, Hung JNM. Spontaneous alignment of permanent successors after enucleation of odontogenic cysts associated with primary teeth. *Br J Oral Maxillofac Surg*. 2008 Jan;46(1):42–5.
8. E M, I K, A H. A clinical and histopathological study of radicular cysts associated with primary molars. *J Oral Pathol Med Off Publ Int Assoc Oral Pathol Am Acad Oral Pathol* [Internet]. 1995 Nov [cited 2024 Jan 11];24(10). Available from: <https://pubmed.ncbi.nlm.nih.gov/8600282/>
9. Goswami M, Chauhan N. Radicular Cyst with Primary Mandibular Molar: A Rare Occurrence. *Int J Clin Pediatr Dent*. 2023 Nov 10;16(5):769–73.
10. Lustig JP, Schwartz-Arad D, Shapira A. Odontogenic cysts related to pulpotomized deciduous molars Clinical features and treatment outcome. *Oral Surg Oral Med Oral Pathol Oral Radiol Endodontology*. 1999 Apr;87(4):499–503.
11. Sandhyarani B, Noorani H, Shivaprakash P, Dayanand Ah. Fate of pulpectomized deciduous teeth: Bilateral odontogenic cyst? *Contemp Clin Dent*. 2016;7(2):243.
12. Nagata T, Nomura J, Matsumura Y, Yanase S, Fujii T, Oka T, et al. Radicular cyst in a deciduous tooth: a case report and literature review. *J Dent Child Chic Ill*. 2008;75(1):80–4.
13. Sakurai A, Taniguchi Y, Hayashibara T, Senzui S, Homma H, Hashida T, et al. Two cases of less invasive treatment for radicular cyst in primary dentition. *Pediatr Dent J*. 2011;21(1):78–84.
14. Pei J, Zhao S, Chen H, Wang J. Management of radicular cyst associated with primary teeth using decompression: a retrospective study. *BMC Oral Health*. 2022 Dec 1;22(1):560.
15. Jana DD, Chakraborty DA, Dey DB, Jana DS, Roy DN, Nandi DB. NITI-LIGHT CURE COMPOSITE SPACE REGAINER: A CASE REPORT. 9(10).
16. An H, Kim S, Choi N. Minor Orthodontic Treatment Using NiTi Wire Exerting Light Force: Case Reports. *J KOREAN Acad PEDTATRIC Dent*. 2022 Nov 30;49(4):505–13.
17. Anavi Y, Gal G, Miron H, Calderon S, Allon DM. Decompression of odontogenic cystic lesions: clinical long-term study of 73 cases. *Oral Surg Oral Med Oral Pathol Oral Radiol Endod*. 2011 Aug;112(2):164–9.

UNDER PEER REVIEW