

# Advancing India's Agroforestry Potential: Technology and Participatory Approaches for Carbon Finance Benefits

## Abstract

Agroforestry, a sustainable land management practice integrating trees with crops and livestock, holds immense potential for climate change mitigation and enhancing rural livelihoods in India. This article explores the role of advanced Remote Sensing (RS) technologies, particularly vegetation indices like NDVI, in monitoring agroforestry plantations for carbon finance projects. It highlights the critical role of Farmer Producer Organizations (FPOs) in mobilizing small and marginal farmers for large-scale Afforestation, Reforestation, and Revegetation (ARR) activities. By combining technology and participatory approaches, agroforestry can significantly contribute to India's carbon neutrality goals, enhance ecosystem services, and provide a sustainable income stream for farmers.

*Keywords: Agroforestry, Carbon Finance, NDVI, Remote Sensing, Farmer Producer Organizations*

## Introduction

The agricultural sector in India, contributing significantly to the country's GDP and employing a large portion of the workforce, faces numerous challenges, including low productivity, dependence on monsoons, fragmented land holdings, post-harvest losses, and environmental degradation. To address these issues, introducing carbon finance projects through Afforestation, Reforestation, and Revegetation (ARR) initiatives could offer alternative livelihoods, additional income streams, and environmental benefits. The ARR sector has the potential to contribute more than 2 billion tons of CO<sub>2</sub> equivalent by 2030 if supported by appropriate policies and finances. For India, where 86.1% of farmers are small and marginal, with landholdings smaller than 2 hectares, these projects could be transformative, offering them the opportunity to engage in carbon finance while enhancing climate resilience.

## Agroforestry Potential in India

Farmer Producer Organizations (FPOs) serve as enablers for mobilizing small and marginal farmers to undertake large-scale Afforestation, Reforestation, and Revegetation (ARR) activities. Acting as aggregators, FPOs address challenges such as fragmented landholdings and limited access to resources. They facilitate capacity building, access to carbon markets, and collective adoption of agroforestry practices. By integrating advanced RS-GIS technologies and participatory approaches, FPOs help farmers secure better prices for carbon credits, enhancing livelihoods while leveraging India's vast agroforestry potential.

Agroforestry, which integrates trees with crops and livestock, is a vital strategy for both climate change mitigation and adaptation. Recognized as a means to reduce CO<sub>2</sub> emissions and enhance carbon sinks, agroforestry can contribute significantly to India's efforts toward carbon neutrality. According to the Vision 2050 report by the Central Agroforestry Research Institute (CAFRI, 2015), the potential exists to expand agroforestry to 53 million hectares from the current 28.4 million hectares by 2050. Currently, agroforestry accounts for 8.2% of India's total land area and contributes 19.3% of the total carbon stocks under different land uses.

Agroforestry not only provides wood and food but also conserves and rehabilitates ecosystems. The sector meets more than 80% of the demand for wood and wood products in the country. For farmers grappling with unpredictable weather patterns and fluctuating crop yields, participating in ARR projects offers a pathway to income diversification. By integrating trees into their agricultural landscapes or restoring degraded forest areas on their land, farmers can tap into additional revenue streams through carbon sequestration. Beyond economic gains, ARR projects deliver crucial environmental benefits. Tree planting enhances soil fertility, improves water retention, and mitigates erosion, bolstering agricultural productivity and ensuring long-term sustainability.

### **The Role of Remote Sensing in Agroforestry Monitoring**

In agroforestry, accurate and efficient monitoring is crucial for assessing the health, growth, and carbon sequestration potential of plantations. Traditional methods of monitoring, which often rely on field surveys, are time-consuming, labor-intensive, and may not provide the comprehensive data required for large-scale projects. This is where Remote Sensing (RS) and Geographic Information Systems (GIS) technologies play a pivotal role.

RS-GIS technologies allow for the precise monitoring of agroforestry plantations by providing high-resolution spatial and temporal data. This data can be analyzed to monitor vegetation health, assess biomass, and estimate carbon sequestration, all of which are essential for the success of ARR projects. Vegetation indices derived from remote sensing data are particularly useful in this regard, as they provide quantifiable measures of vegetation density, health, and growth.

### **Key Remote Sensing-Based Vegetation Indices**

1. **Normalized Difference Vegetation Index (NDVI):** NDVI is one of the most widely used vegetation indices. It measures the difference between near-infrared (which vegetation strongly reflects) and red light (which vegetation absorbs). NDVI is a good indicator of vegetation health and biomass. NDVI provides insights into the health and productivity of agroforestry systems across different seasons. Typically, NDVI shows higher values during the monsoon season (June–September) due to increased vegetation growth and reduced values during dry months (March–May), reflecting moisture stress and lower plant vigor. Analyzing monthly NDVI patterns allows stakeholders to identify critical intervention periods for practices like irrigation and pest management, enhancing resource optimization in agroforestry systems.

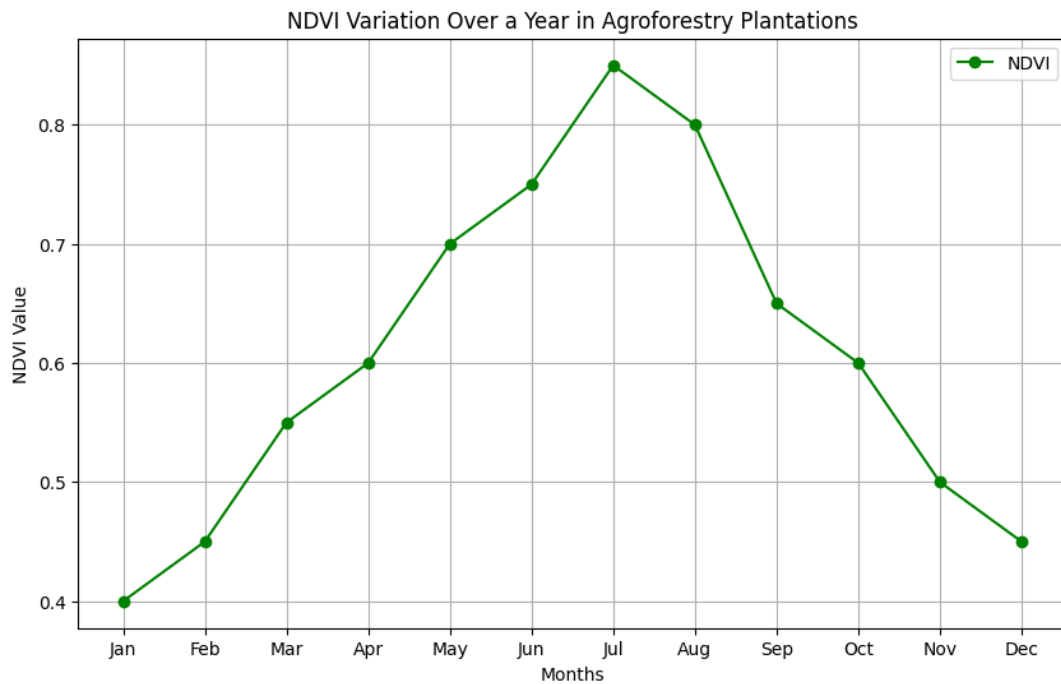


Figure 1: NDVI variations over time for agroforestry plantations, showcasing how NDVI changes with the seasons and growth cycles of the vegetation.

2. **Enhanced Vegetation Index (EVI):** EVI is similar to NDVI but offers improved sensitivity in areas with dense vegetation. It corrects for atmospheric conditions and soil background signals, making it more accurate for monitoring agroforestry systems.
3. **Soil-Adjusted Vegetation Index (SAVI):** SAVI is an improvement over NDVI, particularly in areas with sparse vegetation where soil exposure is significant. It adjusts the vegetation index to account for the influence of soil brightness.
4. **Normalized Difference Water Index (NDWI):** NDWI is used to monitor changes in water content of vegetation. It is particularly useful in assessing the water stress of plants, which is crucial in agroforestry systems that rely on both rain-fed and irrigated crops.
5. **Leaf Area Index (LAI):** LAI measures the leaf area per unit ground area, which is a critical parameter in understanding the photosynthetic capacity of plants and the overall productivity of an agroforestry system.
6. **Normalized Difference Moisture Index (NDMI)**

The Normalized Difference Moisture Index (NDMI) is a remote sensing-based vegetation index used to assess the moisture content in vegetation. It is particularly useful in determining water stress levels in plants and monitoring drought conditions. The NDMI is sensitive to changes in water content in the vegetation canopy, making it an essential tool in agroforestry monitoring, where the health and moisture levels of both trees and crops need to be precisely tracked.

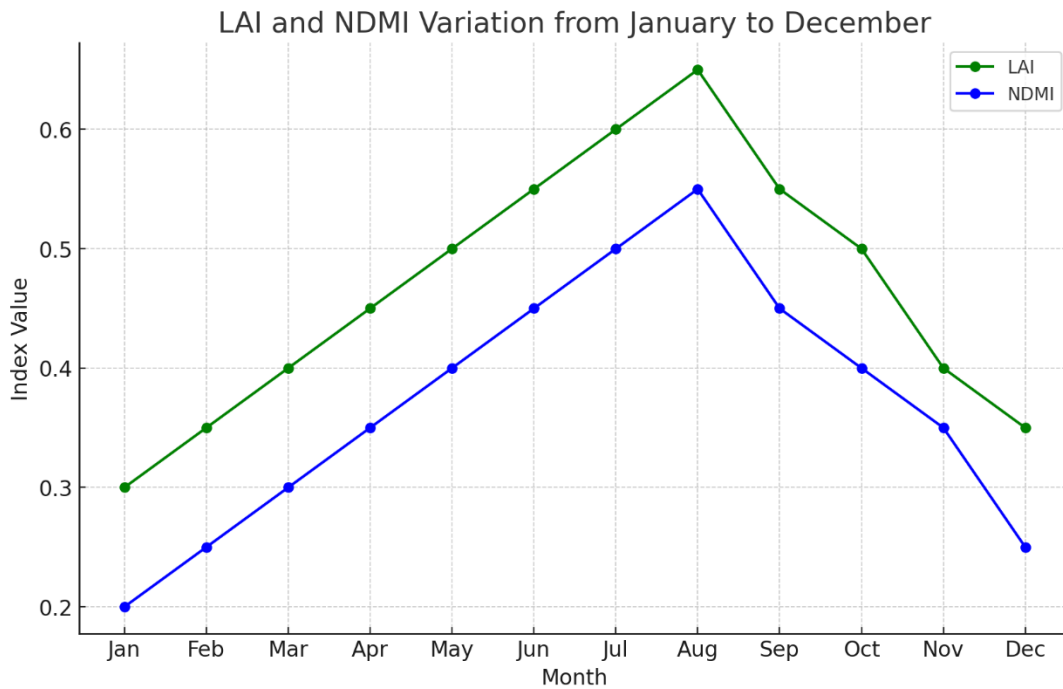


Figure 2: Variation of the Leaf Area Index (LAI) and the Normalized Difference Moisture Index (NDMI) from January to December.

7. **Normalized Burn Ratio (NBR):** NBR is used to assess the severity of burns in forested areas, which is relevant in agroforestry systems where fire management is a concern. It is also useful in post-fire recovery monitoring.
8. **Plant Senescence Reflectance Index (PSRI):** PSRI helps in identifying senescing or aging vegetation. This index is valuable in agroforestry systems to monitor the aging of tree plantations and make informed decisions about harvesting or replanting.

### The Importance of Precise Monitoring

For small and marginal farmers in India, who represent the majority of the agricultural workforce, precise monitoring using modern RS-GIS technology can make a significant difference. Accurate data on vegetation health, biomass, and carbon sequestration allows farmers to optimize their agroforestry practices, ensuring maximum productivity and sustainability. Moreover, precise monitoring is essential for verifying the carbon credits generated through ARR projects, which in turn determines the financial returns for farmers participating in carbon markets.

Through participatory approaches to decision-making and project implementation, these projects foster community resilience by strengthening social cohesion and collective action. Accurate and timely monitoring of agroforestry plantations enables better management of natural resources, leading to more effective conservation efforts and sustainable land management practices. The integration of RS-GIS technologies in agroforestry monitoring not only supports the economic viability of ARR projects but also ensures that the environmental and social benefits are realized, contributing to the overall sustainability of India's agricultural sector.

### Application of Vegetation Indices in Agroforestry Carbon Finance Projects

Agroforestry offers a pathway for small and marginal farmers to participate in carbon finance projects, where they can earn income by sequestering carbon through tree plantations. Remote sensing-based vegetation indices like NDVI, SAVI, and NDMI play a vital role in:

### 1. **Tracking Biomass Growth and Carbon Sequestration**

Vegetation indices like **NDVI** and **LAI (Leaf Area Index)** can be used to estimate the above-ground biomass of agroforestry systems. As tree growth is directly linked to carbon sequestration, monitoring the changes in biomass over time allows for accurate calculation of carbon stocks. This is crucial for the verification and issuance of carbon credits under afforestation, reforestation, and revegetation (ARR) projects.

### 2. **Evaluating Plantation Health and Stress Detection**

Vegetation indices like **GNDVI** and **SAVI** help in monitoring plant health and detecting early signs of stress due to factors like drought, pests, or nutrient deficiencies. In carbon finance projects, maintaining healthy plantations is vital for maximizing carbon sequestration. These indices allow for early intervention to rectify problems and ensure the sustainability of agroforestry systems.

### 3. **Water Management and Drought Monitoring**

The **Normalized Difference Moisture Index (NDMI)** is particularly valuable in assessing the moisture content of vegetation, which is critical for agroforestry systems in dry or drought-prone areas. NDMI helps in monitoring water stress in trees and crops, allowing farmers to implement water-saving techniques or irrigation at the right time. Maintaining appropriate moisture levels is essential for optimizing carbon sequestration as moisture stress can slow tree growth.

### 4. **Spatial Planning for Tree Plantations**

Vegetation indices aid in identifying the most suitable areas for tree planting within a landscape. By analyzing vegetation density, soil conditions, and moisture availability using indices like **SAVI** and **NDVI**, farmers can strategically plan their agroforestry plantations for maximum productivity and carbon sequestration potential.

### 5. **Long-Term Monitoring and Project Evaluation**

Remote sensing-based vegetation indices offer a long-term, cost-effective method for evaluating the impact of agroforestry carbon finance projects. By consistently tracking plantation growth, health, and biomass accumulation through indices like **LAI**, **NDVI**, and **GNDVI**, project managers can assess the success of a project over several years and adjust management strategies accordingly.

### 6. **Biodiversity and Ecosystem Services Monitoring**

Vegetation indices can also be employed to assess the biodiversity and ecosystem services provided by agroforestry systems, which are often included as co-benefits in carbon finance projects. By analyzing variations in canopy structure, vegetation diversity, and ground cover using indices like **NDVI** and **SAVI**, the contribution of agroforestry to habitat provision and ecosystem restoration can be quantified.

### 7. **Community Participation and Empowerment**

Remote sensing data, combined with vegetation indices, provide communities involved in agroforestry projects with concrete, measurable results. Farmers and community groups can

access real-time data on plantation health, growth trends, and carbon sequestration, empowering them to make informed decisions. This enhances the transparency of carbon finance projects and encourages more widespread participation in sustainable land management practices.

## Conclusion

Agroforestry holds immense potential in addressing the challenges faced by the agricultural sector in India, particularly for small and marginal farmers. By integrating modern RS-GIS technologies into agroforestry monitoring, it is possible to achieve precise and efficient management of these systems, thereby enhancing their productivity, sustainability, and contribution to climate change mitigation. As India moves towards implementing its National Agroforestry Policy, the adoption of RS-based monitoring tools will be crucial in realizing the full potential of agroforestry in achieving carbon neutrality and supporting the livelihoods of millions of farmers across the country.

## References

1. Chavan, S. B., Keerthika, A., Dhyani, S. K., Handa, A. K., Newaj, R., & Rajarajan, K. (2015). National Agroforestry Policy in India: A low hanging fruit. *Current Science*, 108(10), 1826–1834. <https://doi.org/10.18520/cs/v108/i10/1826-1834>
2. Central Agroforestry Research Institute (CAFRI). (2015). *Vision 2050*. Central Agroforestry Research Institute, Indian Council of Agricultural Research.
3. Dhyani, S. K., Handa, A. K., & Uma (2013). Area under agroforestry in India: An assessment for present status and future perspective. *Indian Journal of Agroforestry*, 15(1), 1–11.
4. Joshi, L., & Sinclair, F. (2018). Applications of GIS and remote sensing for agroforestry monitoring in tropical landscapes. *Agroforestry Today*, 20(3), 15–21.
5. Lal, R. (2010). Enhancing eco-efficiency in agro-ecosystems through soil carbon sequestration. *Journal of Sustainable Agriculture*, 34(1), 103–134. <https://doi.org/10.1080/10440040903482529>.
6. Sahoo, S., Das, M., & Jha, C. S. (2021). Remote sensing applications for sustainable agroforestry practices in India. *Sustainability*, 13(9), 4827. <https://doi.org/10.3390/su13094827>
7. Vohland, M., & Jarmer, T. (2008). Estimating structural and biochemical parameters for grassland from hyperspectral remote sensing. *International Journal of Remote Sensing*, 29(1), 191-214. <https://doi.org/10.1080/01431160701294644>
8. Zomer, R. J., Trabucco, A., Coe, R., & Place, F. (2009). Trees on farm: Analysis of global extent and geographical patterns of agroforestry. *ICRAF Working Paper No. 89*. World Agroforestry Centre.