

ORIGINAL RESEARCH PAPER - “Unveiling of refined isolation, growth conditions and inoculation assay for *Ephelis japonica* inciting Udbatta disease in rice”

Abstract

Udbatta incited by *Ephelis oryzae* Syd is a minor significant seed borne, sporadic and systemic disease in rice. Isolation of this pathogen is challenging due to its weak growth and the prevalence of other rapidly proliferating fungi like *Curvularia*, *Aspergillus* etc. In this study, a streamlined spore-drop technique was standardized for rapid isolation of *Ephelis japonica* from infected rice panicles. This method achieved pure cultures with minimal contamination (7.50%) in the shortest time (25 days) with a growth rate of 1.7 mm/day, compared to the spore dilution method (32.50%) in 65 days with 0.83 mm/day and standard tissue isolation method (50.25%) in 70 days with 0.45 mm/day. Optimal conditions for fungal growth in axenic culture were also standardized. *E. japonica* recorded the fastest growth on potato dextrose agar (PDA) medium at an incubation temperature of 27°C under dark conditions, which were more conducive to growth than light incubation. The fungus recorded a maximum radial growth of 35.60 mm in 25 days with growth rate of 1.42 mm/day on PDA supplemented with 4% dextrose as compared to 30.27 mm and 1.21 mm/day in 2% dextrose. Furthermore, an inoculation method was standardized for inducing Udbatta disease by treating rice seeds with a fungal suspension for 1–2 hours, followed by overnight drying and sowing resulted in disease incidence of 6.25 % and no disease was observed in stem inoculation and rice head inoculation. Plants grown from seeds treated with fungal suspension exhibited characteristic symptoms like black, erect, cylindrical spike-like structured panicles with grains matted with fungal mat. This refined isolation technique, with optimized culture conditions, provides a robust framework for advancing research on *E. japonica* and Udbatta disease in India.

Keywords: Udbatta, Rice, Spore-drop, Isolation, *Ephelis japonica*

Introduction

Rice (*Oryza sativa* L.) is a staple food crop for over one-third of the global population. Biotic stresses, particularly diseases, are a major limiting factor causing significant yield losses. Various fungal pathogens and non-pathogens are known to inhabit rice seeds. Among the seed-borne fungal pathogens, *Pyricularia oryzae*, *Cochliobolus miyabeanus*, and *Sarocladium oryzae* are the most significant, while *Ephelis oryzae* is considered a minor pathogen. Despite being classified as minor, *Ephelis oryzae* causes black choke or Udbatta disease, a sporadic yet destructive rice disease. In recent years, Udbatta disease has been observed not only in rice but also in several other host plants, including *Cynodon dactylon*, *Leptochloa chinensis*, *Panicum* spp., *Pennisetum* spp., *Eragrostis tenuifolia*, and Kodo millet (*Paspalum scrobiculatum*), as

documented by Lin *et al.* (2018), Nagaraja *et al.* (2021). During the Kharif season, disease severity reached up to 50% in the Tunga variety in the Sakleshpura region of the Hassan district. In other varieties such as BR2655 and MTU 1001, the severity ranged from 10% to 30% in certain fields of the Mandya district (Chethana *et al.*, 2016). Infected rice plants suffer from complete panicle damage, and even a single infected panicle can result in total yield loss, as noted by Soodamani and Vaikuntavasan (2023).

Plants infected with Udbatta disease remain indistinguishable from healthy ones until they reach the boot leaf stage, as the disease does not affect the plant's growth or overall appearance (Ashizawa *et al.*, 2011). *Ephelis oryzae* develop characteristic symptoms in the form of erect, greyish-white, cylindrical to rod-shaped structures resembling incense sticks giving the disease name as udbatta. Instead of normal panicle emergence, these Agarbatti-like structures emerge from the boot leaf sheath. Infected panicles have florets glued together to the main rachis by a spore mass, which hardens into a crust, preventing grain formation and causing 100% yield loss in affected panicles. In some cases, the size of the infected panicles and flag leaves is reduced. The flag leaf, along with the second and third leaves and their respective sheaths, displays a lustrous, greyish-white appearance. While the disease is typically noticeable after the ear head emerges, it can sometimes be observed as early as the boot leaf stage. In high-humidity regions like Malnad, infected leaves exhibit a silvery shine visible from a distance. Numerous fungi, ranging from major pathogens to non-pathogenic species, have been documented as seed-borne in rice (Imolehin, 2019).

Isolation of pathogen is a fundamental step for studying pathogenicity, virulence, host plant resistance, and fungicide resistance. Single spore isolation from diseased samples is a crucial in obtaining pure cultures of fungal pathogens. Several methods, such as spore dilution, leaf press, tissue isolation, and micromanipulator-based isolation, are used to obtain monoconidial cultures. However obtaining pure culture with these method was cumbersome as the pathogen is weak and also slow growing and difficult to overcome the competitive contaminants. In the present study different methods of isolation were tested finally a refined method standardized with which pureculture devoid of contaminants can be obtained. These involve isolating and sub-culturing a single spore under a microscope (Fei *et al.*, 2019). Understanding the pathogenicity of the Udbatta pathogen is critical for developing management strategies and breeding resistant varieties. Artificial inoculation of the pathogen into rice plants is necessary to confirm its identity, satisfy Koch's postulates, and facilitate further characterization studies. Various inoculation methods include mixing dry seeds with spore dust, combining soaked seeds with spore dust, stem inoculation, inoculating rice heads before flowering, inoculating germinated seeds, and treating healthy seeds with fungal suspensions.

Ephelis japonica is a slow-growing fungus, making it challenging to isolate in pure form. During isolation and incubation, it is frequently overrun by fast-growing saprophytes, complicating the process. A pure culture of the pathogen is crucial for advancing research on its disease cycle, host-pathogen interactions, and management strategies. However, in India, scientific knowledge on the successful isolation and cultural conditions for *E. japonica* remains limited (Kumar *et al.*, 2016).

Existing methods for isolation are often labor-intensive and prone to contamination. Thus, there is a **unrelenting** need to develop a simple, efficient method for single-spore isolation of the rice Udbatta pathogen from diseased samples (Jia, 2009; Qiu *et al.*, 2011; Yang *et al.*, 2010). **Efforts were made to standardize** an isolation technique with minimal contamination by evaluating various methods and optimizing the culture conditions and inoculation **method** for *E. japonica*.

Material and methods

Sample collection

Rice fields of different ecosystems of southern Karnataka *viz.*, Irrigated Bhadra, cauvery, coastal, hillyupland ecosystems were visited wherever Jyothi variety is prominently growing during 2022 and 2023 and the infected panicles of rice in field during panicle stage that are showing erect, greyish white, cylindrically shaped **sticks agarbatti** or karikaddi or **Udbatta**-like and silvery or lustrous greyish white fungal growth on leaves suspected to be infected by *Ephelis japonica* were collected. The collected panicles and leaves were packed adequately in polythene packets. Upon bringing to the laboratory, specimens were **preserved in the refrigerator at 4 ± 1 °C** and were **utilized to isolate fungus under in vitro conditions**. Finally a total of ten isolates were isolated from above ecosystems.

- ❖ **Paddy grain extract agar (2%), Potato dextrose agar (4%), Water agar media (2%) were prepared and employed for the isolation of the *Ephelis japonica* during this study.**

Isolation of *E. japonica* by spore-drop technique

To isolate *E. japonica*, rice panicles displaying typical Udbatta disease symptoms were collected in brown paper bags. The black stromata from the panicles were placed in a sterilized moist cotton setup within separate Petri plates and incubated for 24–48 hours to promote sporulation. After incubation, the samples were transferred to a Lesion or Black Stromata Print (LP) setup. **The infected tissues was** surface sterilized and were affixed to sterilized moist cotton on the inner surface of the upper lid of a Petri plate. The bottom plate was filled with either paddy grain extract agar or water agar medium, and the setup was sealed with parafilm tape (Fig 1).

The LP setup Petri plates were incubated at 25 ± 1 °C for three or more days until tiny fungal

colonies became visible on the medium from the diseased samples. A mycelial disc from a single colony was then transferred to a sterile Petri plate containing 1 mL of 2 % paddy grain extract broth, which was macerated with a sterile glass rod. Lukewarm paddy grain extract agar medium was added and thoroughly mixed. After three to four days of incubation at 25 ± 1 °C, individual fungal colonies from *E. japonica* spores developed on the paddy grain extract agar medium. This method is a modified approach for isolating rice blast fungus. (Rajashekara *et al.*, 2017).

After fungal growth, a small loop of the culture was taken from the colonies and placed on a clean glass slide with a drop of lactophenol. The slide was then examined under both low and high magnification to check for the presence of conidia.

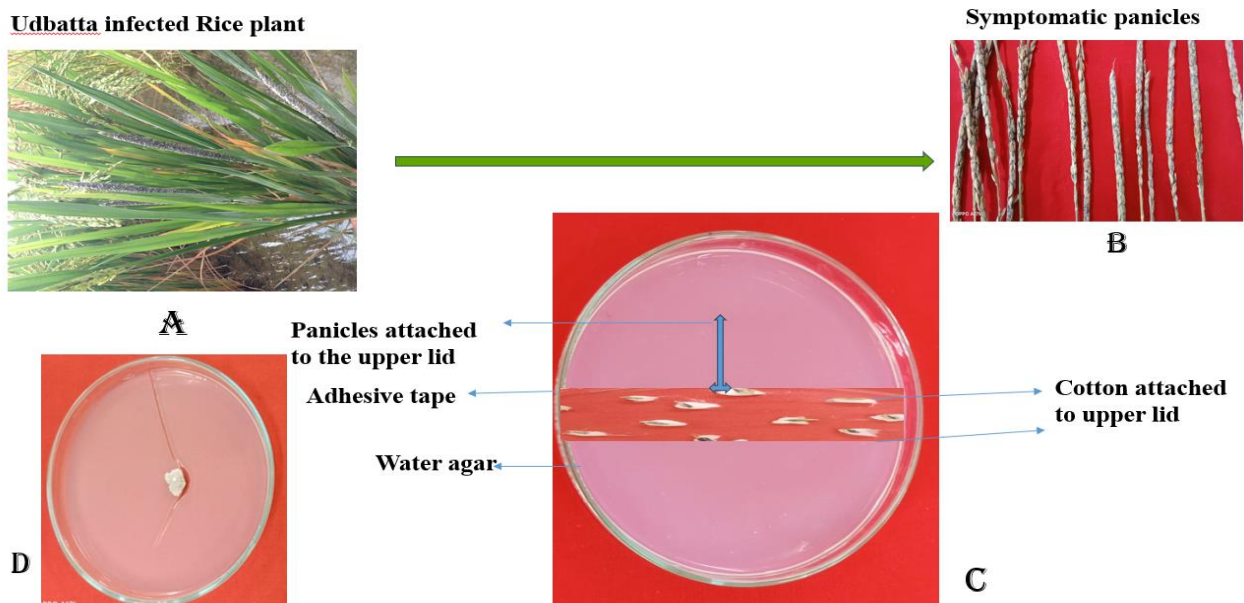


Fig 1. Pictorial representation of the isolation set-up used in the isolation of *E. japonica* by the spore-drop method. a) Udbatta infected rice plant b) Cut panicles of rice with udbatta black stromata c) Petri plate with upper lid attached with cut panicle bits and moistened cotton and lower lid containing paddy grain extract agar or water agar (WA) d) Initiation of fungal growth from spore released from infected panicles

Isolation of *E. japonica* by spore dilution method

For the spore-dilution technique, a diseased panicle was washed under tap water and cut into small pieces containing the ephelidial fructifications. These pieces were then surface sterilized with 1% sodium hypochlorite for 90 seconds, followed by three rinses with sterile distilled water. The sterilized pieces were placed on the upper lid of a Petri dish containing moist filter paper and positioned over a lower dish with 10 ml of sterile distilled water to maintain 100% relative humidity inside the chamber (Fig. 2). The setup was incubated at 28°C for 48 hours to facilitate sporulation. After incubation, the black ephelidial fructifications were examined under a stereo

binocular microscope for sporulation. Sporulating leaf tissues were then transferred to an Eppendorf tube containing 1 ml of sterile water and gently **shaken** to release the spores. About 100 µl of this suspension was spread on 2% WA medium using a sterilized spreader and incubated overnight at 25±1°C (Fig. 2). The incubated Petri plates were examined under a microscope, and germinating conidia were identified. Finally, a single spore was transferred to fresh PDA plates containing streptomycin sulfate (40 mg/L) and incubated at 25±1°C for 7-10 days (Fig. 2).

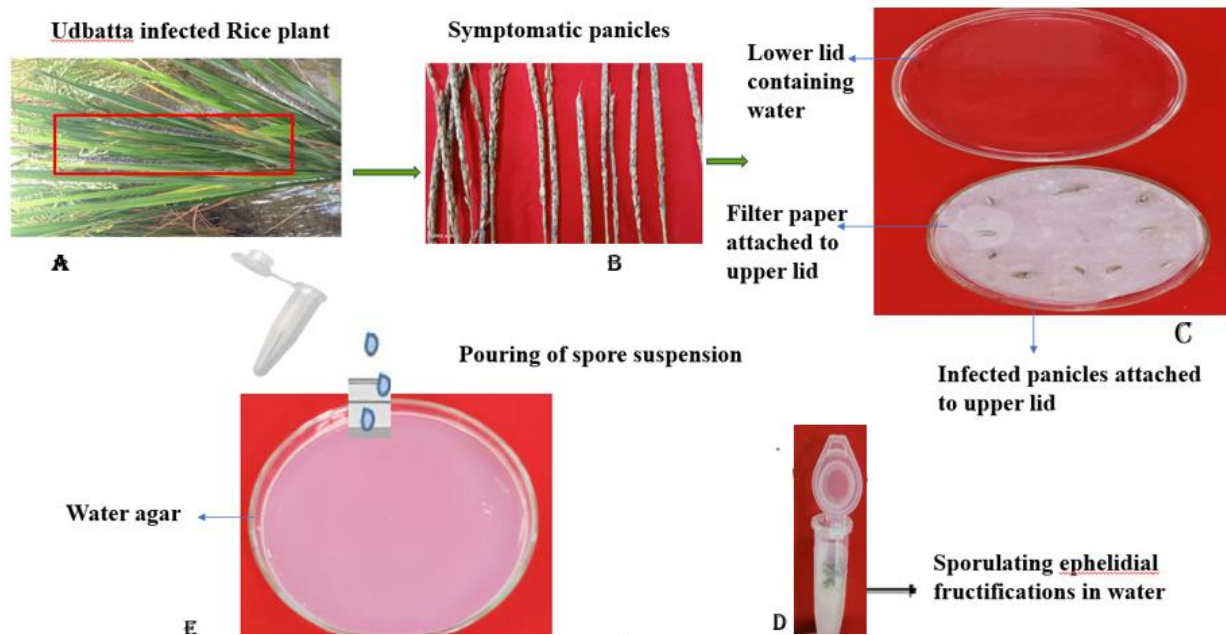


Fig 2. Pictorial representation of the isolation of *E. japonica* by the spore-dilution method. a) Udbatta infected rice plant; b) Rice panicles with udbatta symptoms; c) Petri plate with upper lid attached with cut panicle bits on filter paper and lower lid containing water; d) Panicle bits in Eppendorf tube containing sterile water; e) Spore suspension spread on water agar.

Isolation of *E. japonica* by tissue isolation method

In another method, infected host tissue isolation, the infected panicles and leaves were cut into small pieces of up to 1 cm in size and surface sterilized with a 0.1% mercuric chloride solution for 1 minute to eliminate external contamination. After sterilization, the pieces were washed several times with sterile distilled water. These small infected tissue samples were then placed on Potato Dextrose Agar (PDA) in Petri dishes and incubated at 26°C for 15 days. The Petri dishes exhibited full growth of white mycelia from the pathogen.

In all three methods, observations were made to record the percentage of contamination and the time taken to obtain a pure culture, measured until a colony with a 5 cm radius was formed.

Culture conditions

Two different media, Potato Dextrose Agar (PDA) and Rice Leaf Extract Agar, were used for

isolation, with PDA modified to include varying dextrose concentrations of 2%, 4%, 6%, 8%, 10%, and 12% incubated at temperatures of 25°C, 27°C, and 29°C. Petri plates containing discs of fungal cultures were placed in darkness by turning off the light in the BOD incubator. The plates were periodically observed and their growth compared with that of cultures incubated under light conditions.

Testing different methods of inoculation for pathogenicity assay

Inoculum preparation

Randomly selected *E. japonica* isolates were used in this experiment. Spore suspensions of the respective fungal isolates were prepared to a concentration of approximately 1×10^6 conidia/ml using haemocytometer. Prior to use, Tween 80 was added to the spore suspension for inoculation. For spraying inoculation, 0.5% gelatin was added to the suspension to prevent spore desiccation.

Artificial inoculation of rice

The inoculation technique of spore suspension of *E. japonica* (1×10^6 spores/ml) was tested using Jyothi variety of rice. Three inoculation methods were employed:

- I. Soaking the seeds in spore suspension,
- II. Stem inoculation
- III. Inoculating rice heads before emergence

Healthy rice seeds were soaked in the spore suspension (1×10^6 spores/ml) for 24 hours, and air-dried overnight and then sown in plastic pots filled with sterile soil and transplanted to pots placed in glasshouse after 15-20 days after sowing. For conidia injection, 1 ml of the suspension was injected into the upper part of the leaf sheath covering the developing panicle using a syringe. In a separate set, only sterile distilled water was sprayed or injected as a negative control. The inoculated rice plants were maintained under relative humidity of 80 % and the pots with seedlings were transferred from the humid chamber to a glasshouse. The growth of rice plants were maintained by providing appropriate recommended doze of fertilizers. Observations were made to notice the development of typical Udbatta disease symptoms.

To confirm the pathogen's identity, the fungal pathogen was re-isolated from the infected plant parts of the artificially inoculated rice plants. The resulting culture on Potato Dextrose Agar and conidial morphological characteristics was compared with the original culture to verify the pathogen's identity.

The percent disease incidence was calculated and evaluated as follows:

$$\text{Disease incidence (\%)} = \frac{\text{Total infected rice panicles}}{\text{Total healthy rice panicles used for study}} \times 100$$

Statistical analysis

The results were statistically analyzed using a completely randomized design and interpreted

through analysis of variance, performed with SPSS software (Shivraj *et al.*, 2018).

Results and Discussion

Among the various methods, the spore-drop technique exhibited the lowest contamination rate of 7.5%, whereas the spore-dilution and tissue isolation methods showed significantly higher contamination rates of 32.50% and 50.25%, respectively (Table 1). Additionally, the spore-drop technique significantly reduced the time required to obtain a pure culture of the pathogen, achieving this in just 25 days, compared to 70 days for tissue isolation 65 days for the spore-dilution method.

Although the spore-dilution method shows a higher contamination rate compared to the spore-drop technique, the latter is more effective for routine isolation of the pathogen in rice-udbatta studies. While earlier researchers (Jagadeesh *et al.*, 2018; Rajashekara *et al.*, 2017) have employed the spore-dilution method for similar slow-growing fungi like *Ustilaginoidea virens* (Fungi belonging to Claviceptaceae family) and the *Pyricularia grisea*, this approach requires additional surface sterilization with 1% sodium hypochlorite and 95% ethyl alcohol, followed by serial dilution. In contrast, the spore-drop method simplifies sample preparation, eliminating the need for toxic chemicals or surface sterilization. Pathogen growth rates on PDA plates were recorded to be significantly higher with the spore-drop technique (1.7 mm/day) compared to the spore-dilution (0.83 mm/day) and tissue isolation methods (0.45 mm/day). Though the tissue isolation method seems to be easy, but involvement of lab contaminanats and saprophytes was higher which masked the growth of required pathogen and the sample needs to be processed first for incubation and then transformed to plate itself; therefore, we observed a higher contamination percentage. Few colonies of *Curvularia* were normally identified as contaminants during isolation of *Ephelis* and colonies of contaminants or saprophytes like *Aspergillus flavus*, *Curvularia*, *Fusarium*, *Rhizopus*, *Aspergillus niger* were found in other two methods (Fig 7B). For the isolation of *E. japonica*, regardless of the method used, it is essential to use fresh rice panicle samples since the pathogen is a weak saprophytic competitor (Fan *et al.*, 2020). During isolation, other pathogens and saprophytes can outcompete *E. japonica*. Previous studies have documented the isolation of *E. oryzae* by creating a humid chamber in Petri dishes containing moistened filter paper (Narayan, 2014; Ashizawa *et al.*, 2011). In this study, we adopted a similar approach with a slight modification where, cotton was attached along the inner margins of the upper lid, moistened with sterile water using a micropipette, and placed over a lower dish containing 2% WA. While the spore-dilution method has been widely used to obtain monoconidial cultures of slow-growing fungi like *U. virens* (a member of the Clavicipitaceae family) (Jagadeesh *et al.*, 2018; Rajashekara *et al.*, 2017), the spore-drop method described in this study proved to be more efficient and robust, with significantly lower contamination rates.

This is largely because the entire process is conducted within a laminar airflow cabinet. The spore-dilution method, on the other hand, reported higher contamination rates (32.50%) due to the longer processing time, which allows saprophytes to proliferate. The spore-drop method, as standardized in this study, is a reliable and efficient technique for obtaining pure cultures of *E. japonica* from blast-infected rice panicles. From this refined spore drop method, 10 different isolates of *Ephelis* were obtained i.e (UEO1-UEO10), where UEO refers to isolate code given for further studies i.e Udbatta *Ephelis oryzae*. It offers a significant advantage by eliminating the need for toxic surface sterilizing chemicals during the isolation process. The growth of *E. japonica* was found to be influenced by light conditions during incubation. The fungus exhibited optimal and faster growth when incubated in darkness compared to exposure to light at an intensity of 200 lux.

Methods	Contamination (%) #*	Days to obtain a pure culture	Contaminants observed during isolation	Growth per day
Spore-drop	7.50 (15.89)	25	<i>Curvularia</i>	1.7 mm
Spore dilution	32.50 (34.76)	70	<i>Curvularia</i> , <i>Helminthosporium</i> , <i>Aspergillus flavus</i> , <i>Rhizopus</i>	0.83 mm
Conventional tissue isolation	50.25 (45.14)	65	<i>Aspergillus niger</i> , <i>Curvularia</i> , <i>Aspergillus flavus</i> , <i>Fusarium</i>	0.45 mm
S.Em.±	0.33	0.45		
CD @ 1%	1.18	1.62		

Table 1. Contamination recorded in different methods

Total number of contaminated plates/total number of plates inoculated

*Values in the parenthesis are angular transformed

Cultural characteristics

After 9–10 days of inoculation, *E. japonica* began to grow on PDA culture medium, forming creamy-white colonies that were flat or slightly raised with gentle undulations. The mycelium appeared fluffy, compact, and leathery (Fig. 3). Initially, the colony color on potato dextrose agar

was dull white, gradually turning brown with a shiny, waxy appearance. The colonies became thick, flat, and radiating with brown stripes. On paddy leaf extract agar, the colonies appeared nut-brown to dull brown with a shiny, leathery, and waxy texture. They were thick, flat, and exhibited profuse mycelial growth, accompanied by hyaline conidia (Fig. 4). A total of ten pure isolates were successfully obtained. The conidia were observed to be needle-shaped, aseptate, and hyaline, while the mycelium was initially aseptate and hyaline, transitioning to a brown color as it aged. The results were in accordance with Wang *et al.* (2019), Nagaraja *et al.* (2021) and Guo *et al.* (2012).

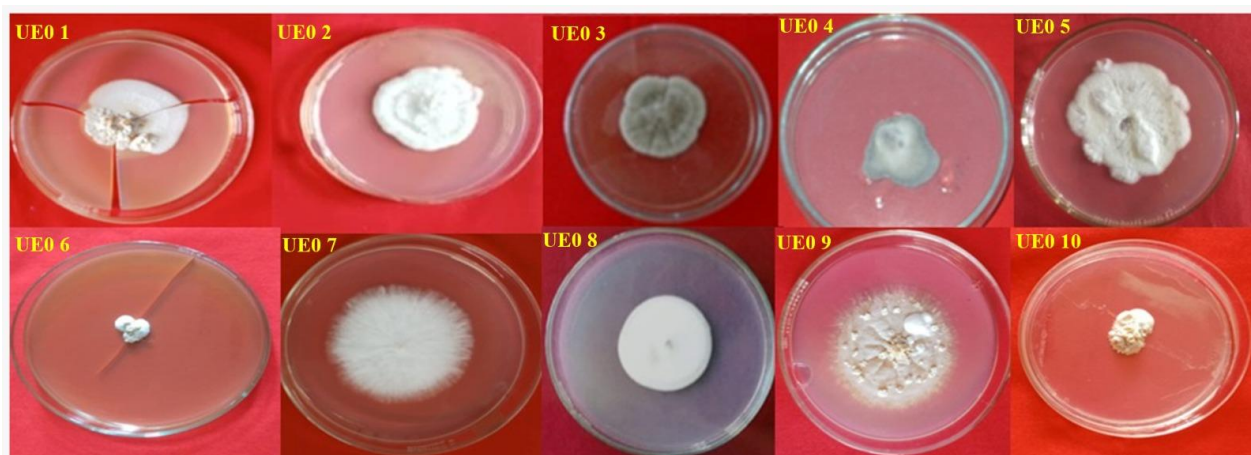


Fig 3- Growth of different isolates of *E. japonica* on PDA at 27°C 30-35 days after incubation (UEO1-UEO10)

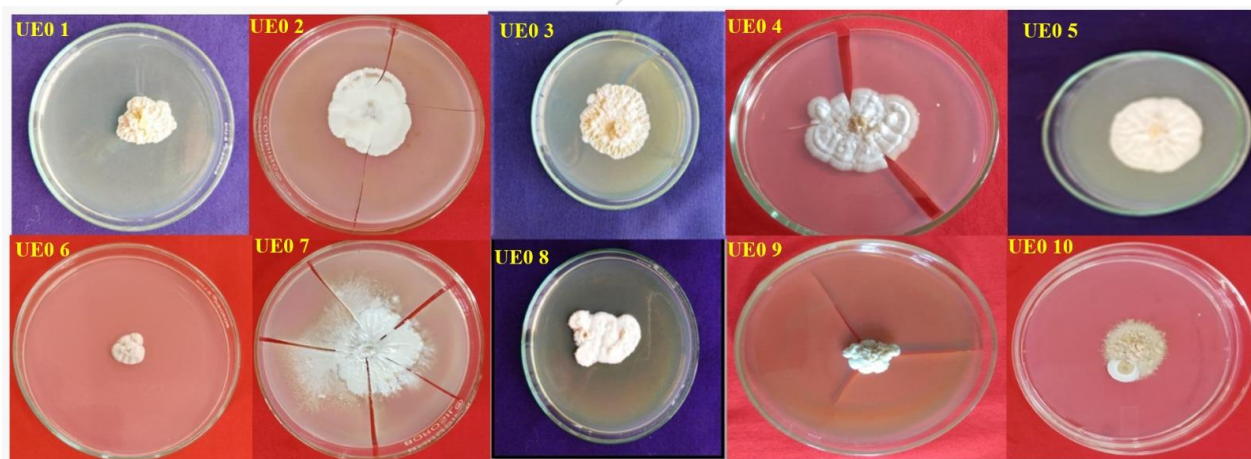


Fig 4- Growth of different isolates of *E. japonica* on paddy leaf extract agar at 27°C 30-35 days after incubation (UEO1-UEO10)

Identification of the isolated fungus

Morphological identification of fungal pathogen was done based on cultural characteristics and description of *E. japonica* given by Tsukiboshi, *et al.* (2008) and Nagaraja *et al.* (2021), Kumar (1998) and Srivastava (2020).

Culture media for isolation

Between the two media tested, potato dextrose agar (PDA) and rice leaf extract agar, *E. japonica* exhibited superior growth on PDA for most isolates, with colony diameters ranging from 25 to 42 mm. The maximum growth (42 mm) was observed in isolate UEO9, 30–35 days after incubation, while the minimum growth (25 mm) was recorded for isolate UEO6. However, isolates UEO7 and UEO2 achieved the highest growth (40 mm) on rice leaf extract agar, while the other eight isolates showed maximum growth on PDA after 30 days of incubation. All isolates displayed their maximum radial growth at 35 days post-inoculation, consistent with the pathogen’s slow-growing nature, as growth typically begins 9–10 days after inoculation. Radial growth steadily increased with incubation time (15, 25, and 35 days) across all isolates, indicating consistent and sustained fungal proliferation under the tested conditions. Growth at 35 days was significantly higher than at earlier time points for all isolates. Notably, isolates UEO7 and UEO9 demonstrated robust radial growth measuring 40 mm and 42 mm at 35 days of incubation, making them potential candidates for applications requiring high fungal proliferation. Conversely, the less growth i.e 25 mm observed in isolate UEO6 suggests a need for optimization or alternative growth conditions. The radial growth of UEO9 and UEO7 was statistically significant at 35 days of incubation compared to 15 and 25 days of incubation. Average radial growth of all the isolates at 35 days of incubation was 33.55 mm. Statistical analysis confirmed the reliability and significance of the observed differences in radial growth, with minimal error margins. These findings align with earlier studies by Kumar (1998), Bashyal *et al.* (2021), and Manmohan *et al.* (2000), which reported *Ephelis* colonies on PDA achieving growth of approximately 35 mm.

Isolate	(PDA) Radial growth (mm)		
	15 [#]	25 [#]	35 [#]
UEO1	16.35	30	36
UEO2	15.65	36	40
UEO3	14.20	22.5	28
UEO4	15.5	25.5	29.5
UEO5	23.50	34.55	37.5

UEO6	11.58	19.00	25
UEO7	25.10	35.80	40
UEO8	18	29.55	34
UEO9	23	38	42
UEO10	14	21.50	25
S.Em ±	0.47	0.45	0.57
CD @ 1%	1.42	1.33	1.70

= Days after inoculation

Table 2. Growth of different isolates of *E. japonica* at 27°C and pH 6.0 in Potato dextrose agar at different days after inoculation

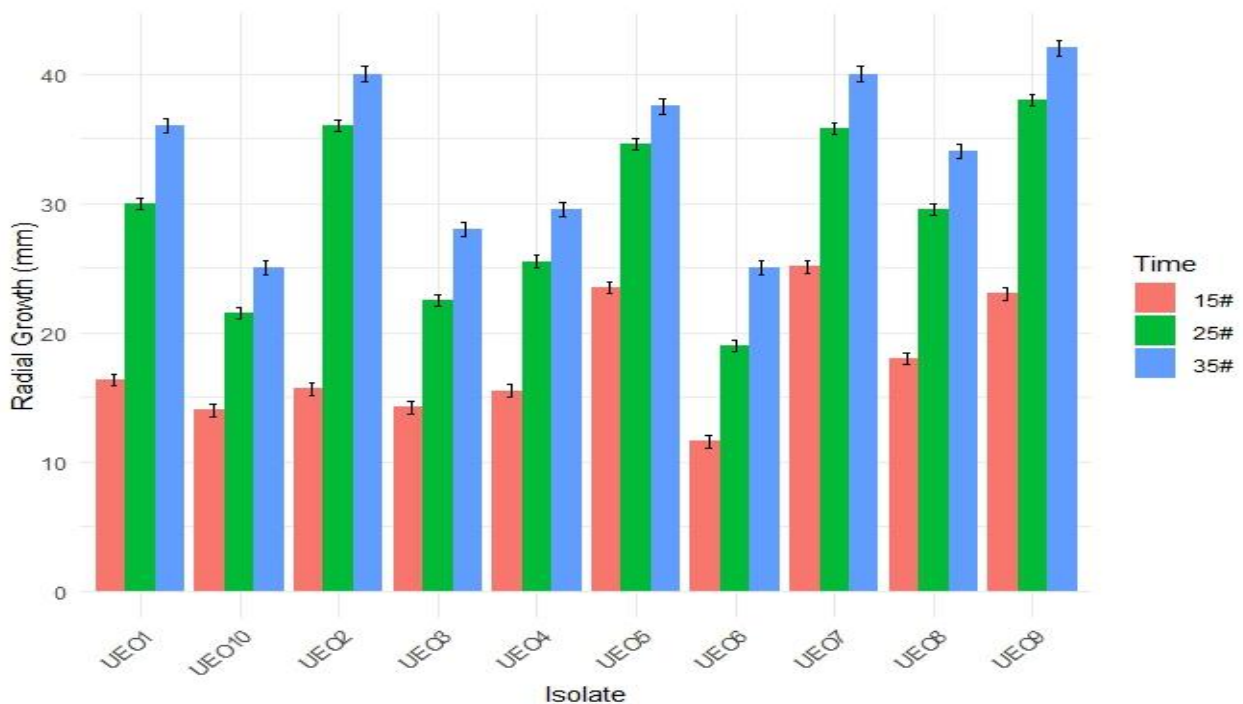


Fig 5. Growth of different isolates of *E. japonica* at 27°C and pH 6.0 in Potato dextrose agar at different days after inoculation

Temperature set up for isolation and growth

To determine the optimal temperature for the isolation and growth of *E. japonica*, cultures were incubated on PDA medium at different temperatures (25°C, 27°C, and 29°C). The highest growth

rates for most isolates were observed at 27°C, with colony diameters ranging from 25 to 42 mm. The maximum radial growth was observed in UEO9 and UEO2 isolates measuring 42mm each at 27°C and found to be statistically significant. Least growth was noticed in UEO10 isolate with 25mm radial growth at 27°C. However, isolates UEO5 and UEO7 showed the best growth at 29°C (Table 3, Fig. 6). Average growth of all isolates at 25°C, 27°C, and 29°C were found to be 29.5 mm, 33.4 mm and 31.5 mm respectively marking that 27°C is the optimal temperature for the isolation and growth of *Ephelis japonica* in most cases. Similar findings were reported by Harsha *et al.* (2016) and Das *et al.* (2000).

Isolate	Temperature (Growth in mm at pH 6)		
	25°C	27°C	29°C
UEO1	30	35.5	33
UEO2	38	42	40
UEO3	25	28	26.55
UEO4	26	29.5	28
UEO5	32	34	37.5
UEO6	25	27	23
UEO7	34	37	40
UEO8	30	34	31.45
UEO9	34.5	42	32
UEO10	21	25	20
S.Em ±	0.44	0.49	0.51
CD @ 1%	1.33	1.54	1.58

Table 3. Effect of temperature range on isolation and growth of *E. japonica* in PDA medium

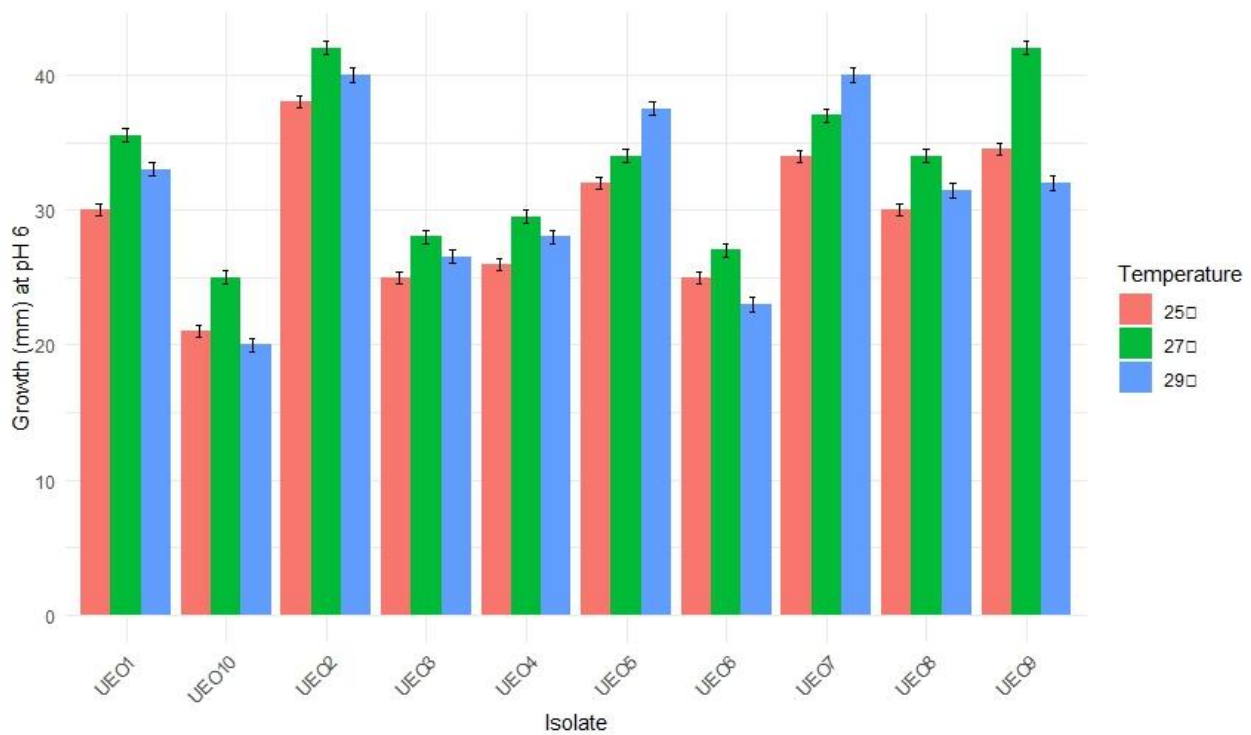


Fig 6. Effect of temperature range on isolation and growth of *E. japonica* in PDA medium

Effect of different dextrose concentration on isolation and growth of *Ephelis japonica*

Fungi rely on various natural substrates to obtain nutrients and energy, and no single artificial medium supports the growth of all fungi equally. To identify an optimal medium for isolating and growing *Ephelis japonica*, an experiment was conducted using potato dextrose agar (PDA) with modified dextrose concentrations of 2%, 4%, 6%, 8%, 10%, and 12%. The methods used are detailed in the Materials and Methods section, and the results are shown in Table 4 and Figures 7 and 8. When the pathogen attained maximum growth, the radial growth and sporulation of the fungus were recorded. The results demonstrated significant differences in dextrose concentration which affected the isolation and growth of *E. japonica*. The highest mean radial growth occurred on PDA with 4% dextrose (35.60 mm), which was significantly superior to all other concentrations. This was followed by PDA with 2% dextrose (30.27 mm), 6% (23.39 mm), 8% (19.98 mm), and 10% (11.40 mm). The lowest growth was observed on PDA with 12% dextrose (8.60 mm). Sporulation also varied across treatments. Excellent sporulation occurred on PDA with 4% and 2% dextrose, while good sporulation was noted on PDA with 6%, 8%, and 10% dextrose. In contrast, moderate to very low sporulation was recorded on PDA with 12% dextrose. This may be due to 4% dextrose mimics natural nutrient environment and provides an optimal balance of nutrient availability, energy, and mild nutrient stress that promotes both the growth and sporulation. Too high concentration (>4–12%) can lead to hyperosmotic conditions which can inhibit growth and sporulation (Srivastava., 2020). These results align with studies by Lewis and White (2006), Baite *et al.* (2022), and Rajashekara *et al.* (2017).

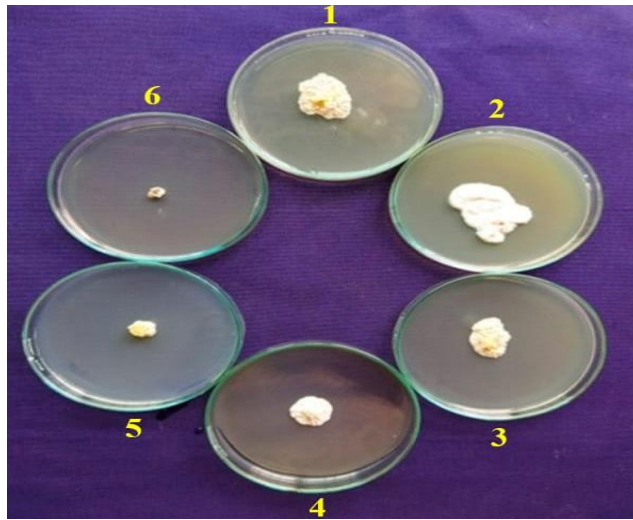
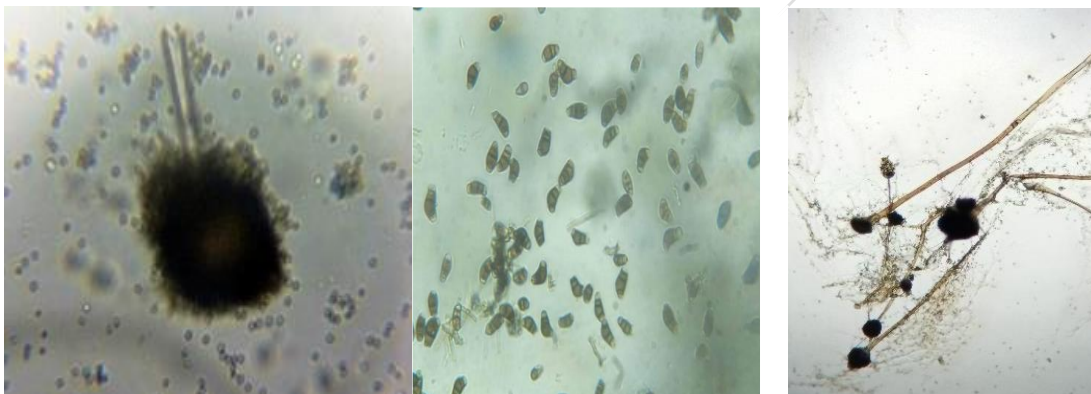


Fig 7A. Effect of different dextrose concentration on isolation and growth of *Ephelis japonica*



Aspergillus niger

Curvularia sp.

Rhizopus sp.

Fig 7B. Morphology of major contaminants observed under microscope during isolation of *Ephelis japonica* by different methods

Treatment No.	Dextrose concentrations	Mean radial growth (mm)	Sporulation
T1	2 %	30.27	++++
T2	4 %	35.6	++++
T3	6 %	23.39	+++

T4	8 %	19.98	+++
T5	10 %	11.4	+++
T6	12 %	8.6	++
	S.Em. ±	0.18	
	CD @ 1%	0.62	

Table 4. Effect of different dextrose concentration on isolation and growth of *Ephelis japonica*

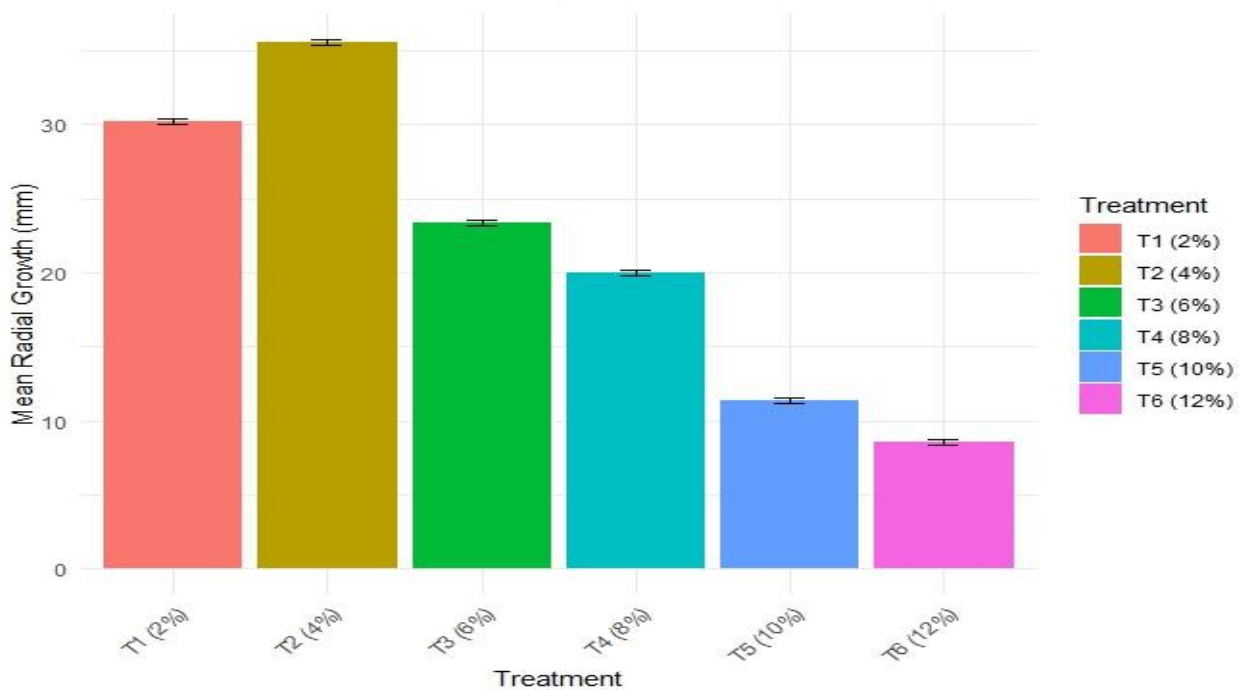


Fig 8. Effect of different dextrose concentration on isolation and growth of *Ephelis japonica*

Evaluation of different methods of inoculation

To fulfill Koch's postulates and to test method of inoculation to disease occurrence various

methods were employed, including wet soaking of seeds in spore suspension, stem inoculation, and inoculation of rice heads before flowering. Among these, the seed inoculation method using spore suspension proved most effective, producing typical udbatta symptoms. Seeds of the susceptible paddy variety Jyothi were artificially inoculated by soaking in the spore suspension. Later after 75 days after inoculation of seeds and sown, the disease was noticed aligning with panicle initiation stage. Following inoculation, the emerging panicles displayed characteristic symptoms: a straight, single, dirty-colored cylindrical appearance resembling an incense stick (agarbatti), covered with white mycelial growth. Infected rice panicles covered with leaf sheath exhibited stunted growth, and the flag leaf showed a shiny, greyish-white fungal growth. In contrast, control plants and other method of inoculated plants revealed no symptoms, maintaining normal growth and appearance. Per cent disease incidence was calculated for all method of inoculation and it was found to be 6.25 % in seed inoculated plants and no disease in other two methods and control group revealing that artificial seed inoculation with spore suspension of *E. japonica* before sowing is the only method of inoculation to cause disease.

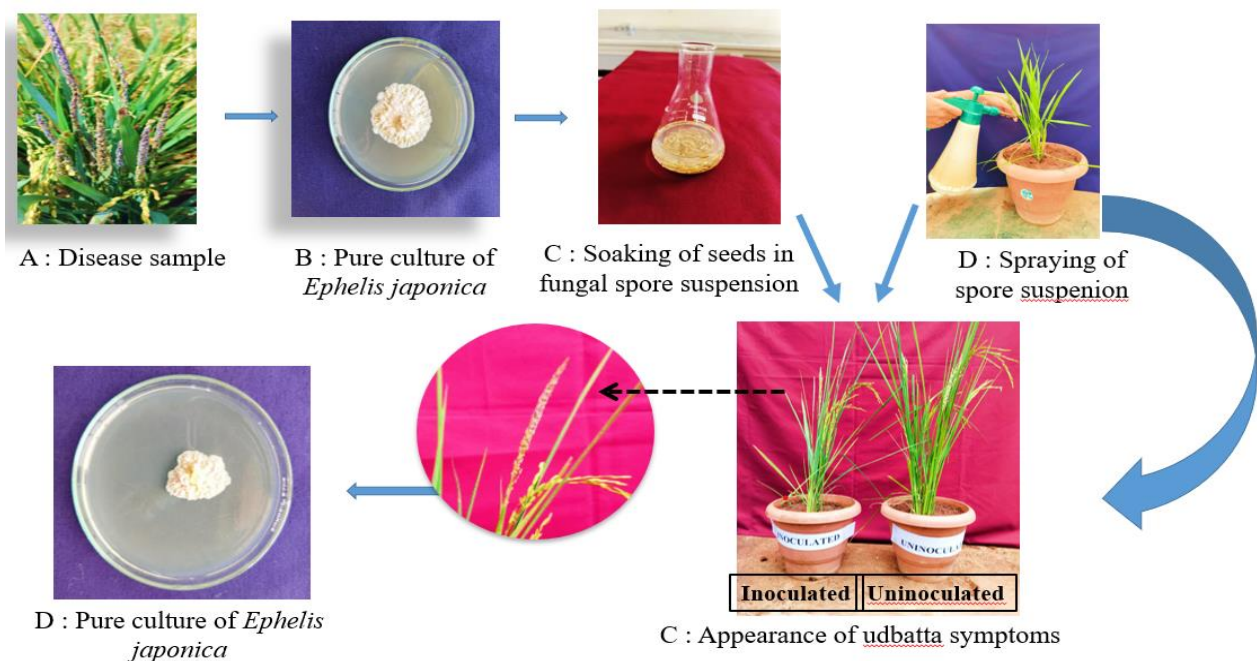


Fig 9. Inoculation assay standardization and proving the pathogenicity of *E. japonica*

The symptoms of Udbatta disease caused by the pathogen *Ephelis japonica* on artificially inoculated plants closely resembled those observed on naturally infected paddy plants (Fig. 9). The pathogen was re-isolated from the artificially infected paddy plants using Potato Dextrose Agar. The resulting culture matched the morphological characteristics of original culture confirming the fungus as pathogenic to the paddy plant (Fig 10).

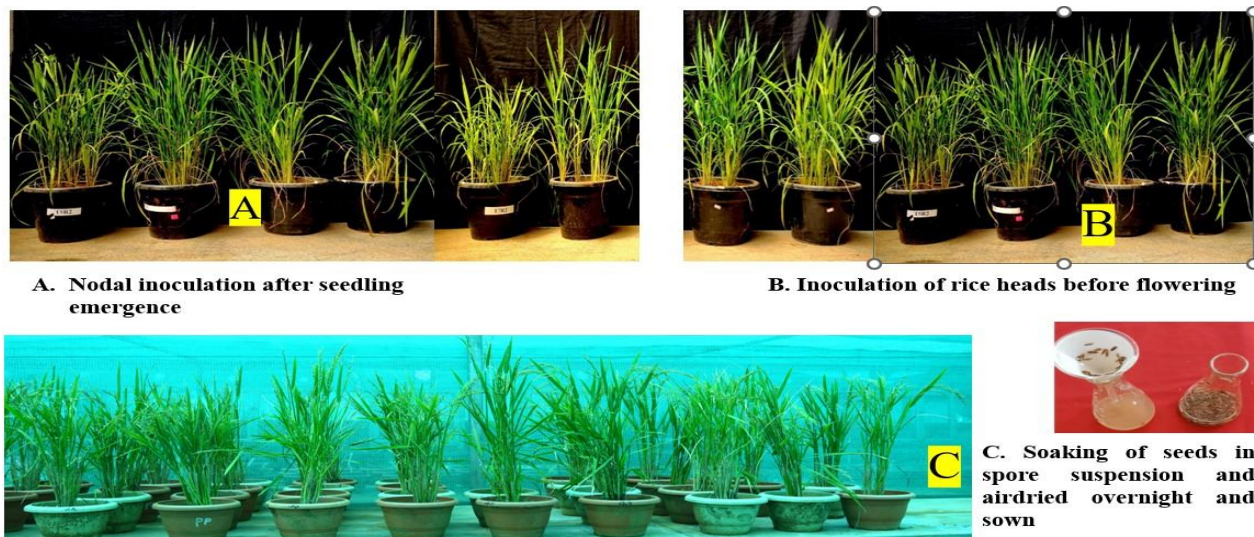


Fig 10. Different methods of inoculation of *E. japonica* used for rice plants to incite udbatta



Fig 11. Symptoms of udbatta on rice plants due to artificial inoculation of *Ephelis japonica*

The disease was observed **in plants raised by seed inoculation** with spore suspension, rather than by conidia injection (Figure 11), spraying during the tillering stage, or stem inoculation, all of which showed no symptoms of Udbatta at later stages (Table 5). The results from the combined analysis clearly indicated that seed inoculation was the most suitable inoculation technique for this experiment (Table 5), and it should be performed before sowing.

Among the three inoculation methods applied at different rice growth stages, seed inoculation before sowing proved to be the most effective in causing Udbatta incidence. In contrast, conidia spraying or inoculating rice heads before flowering and stem inoculation did not result in disease.

Unlike in field, silvery leaf symptoms of Udbatta were not noticed in tillering or boot leaf stage of rice during our study and disease was occurred during panicle initiation stage. This may be due to congenial conditions prevailed and pathogen is carried and resides on or within infected rice seeds. Pathogen grows systemically within the plant, eventually affecting the panicles. During seed inoculation, the fungus gets an opportunity to infect the growing plant. This suggests that the pathogen is seed-borne and that seed infection plays a critical role in the pathogen's persistence. The growth stage is also a key factor in the success or failure of inoculation. Infected seeds are believed to be the primary source of inoculum. Similar findings have been reported by Nagaraja *et al.* (2010), Soodamani and Vaikuntavasan (2023), Narayan (2014), Tanaka *et al.* (2001), and Ladhakshmi *et al.* (2012), who observed higher Udbatta incidence when rice seeds were inoculated with conidia suspension, with panicle initiation being the critical stage for disease development.

The consistent response of the Jyothi cultivar to *E. japonica* observed in both field conditions and this experiment suggests that its resistance may be polygenic. The higher disease scores seen in the experiment could be due to the high concentration of inoculum applied to the rice seed and the artificial nature of the inoculation process. Given these limitations of artificial inoculation, it is essential to repeat the screening under field conditions.

Isolating *E. japonica* from Udbatta-infected rice plants is challenging due to its slow growth, which often results in contamination by faster-growing saprophytes during isolation and incubation. The surface sterilization methods previously described (Atia, 2004) did not consistently yield successful isolations. However, the newly refined spore drop technique proved to be more effective than the ones reported by Atia (2004). It is simpler, and the fungus can be isolated with ease. Since in spore drop method, the pathogen's spores are allowed to drop onto a sterile medium, reducing the risk of isolating other microorganisms present in the plant tissue. It specifically targets spores, which are the primary propagules of many fungal pathogens, rather than relying on potentially contaminated or dormant tissue. The spore drop technique isolates only active and viable spores, avoiding contamination from dead or dormant plant tissue. Spore dilution and tissue isolation may recover both pathogens and saprophytes, leading to challenges in identifying the target pathogen. In tissue isolation, contaminants like bacteria or other fungi present in the tissue can outgrow the pathogen and usage of 0.1% mercuric chloride solution for surface sterilization of epheidial fructifications has a risk of inhibiting spore germination, likely by affecting both the spores of target pathogen and other surface contaminants. Fresh samples from Udbatta-infected panicles exhibited better spore germination when cultured, but prolonged storage (over two months) led to a rapid decline in germination percentage. The fungus was found to be sensitive to light conditions during the incubation period, with growth of *E. japonica* being better in darkness than under light. These

findings are consistent with those of Hong-ping (2001) and Ashizawa *et al.* (2011), Imolehin (2019).

SI. no	Method of inoculation	Reaction	Disease incidence (%)
1	Artificial Seed inoculation by fungal spore suspension	+++ characteristic symptoms like a straight, single, dirty-colored cylindrical appearance resembling an incense stick (agarbatti), covered with white mycelial growth were observed	6.25
2	Stem inoculation- during tillering stage	Absence of disease symptoms	0.00
3	Inoculation of rice heads before flowering- around late booting stage	Absence of disease symptoms	0.00
	Control	Absence of disease symptoms	0.00

Table 5. Udbatta disease on rice inoculated by three different methods at different growth stages of rice

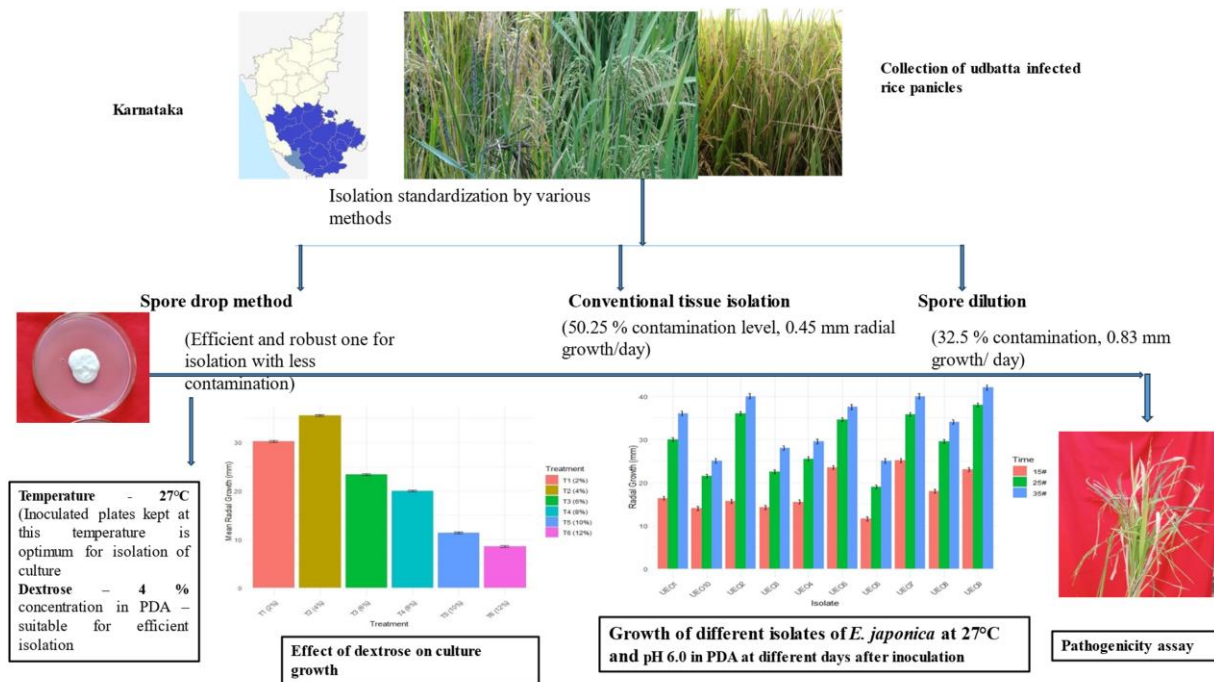


Fig -12 Schematic representation of collection of udbatta infected panicles, isolation of *E. japonica* and by various methods and standardization and inoculation assay for the pathogen

Conclusion

Udbatta, caused by *Ephelis oryzae* Syd, is a minor yet significant seed-borne, sporadic, and systemic disease in rice. The standardized isolation technique is anticipated to be a valuable resource for researchers investigating this pathogen in the near future. The fungus grew well on both media, but the best growth was observed on Potato Dextrose Agar (PDA). The alternative medium, Paddy grain Extract Agar, supported comparatively slower growth. PDA facilitated the fastest mycelial growth, with a rate of 1.70 mm/day. Of the three incubation temperatures tested, 27°C proved to be the most optimal, as the fungus displayed the highest growth rate at this temperature compared to 25°C and 29°C. 4% dextrose in PDA revealed higher radial growth after isolation. Seed inoculation was proven to be best standardized method for artificial induction of disease. The challenge of isolating the udbatta pathogen has been overcome with the successful isolation of *E. japonica*, along with the establishment of its optimal growth conditions, including the ideal culture media, temperature, and light. This study also provides, for the first time in India, detailed cultural images of *E. japonica*, which will assist in the precise identification of the fungus. The data documented in this study will serve as a helpful reference for future identification of the fungus. The deposited cultures at ITCC, New Delhi, will offer easily accessible material for ongoing research. This work opens new opportunities for further studies on this rapidly emerging rice disease in India.

Disclaimer (Artificial intelligence)

Option 1:

Author(s) hereby declare that **NO** generative AI technologies such as Large Language Models (ChatGPT, COPILOT, etc.) and text-to-image generators have been used during the writing or editing of this manuscript.

Acknowledgement

The authors thank Department of Plant Pathology, UAS, GKVK, Bengaluru and V.C. Farm CoA, Mandya for facility for research conductance.

References

1. ASHIZAWA, T., TAKAHASHI, M., MORIWAKI, J. AND HIRAYAE, K., 2011, A refined inoculation method to evaluate false smut resistance in rice. *J. Gen. Plant Pathol.*, **77**(8): 10-16.
2. ATIA, M. M. M., 2004, Rice false smut (*Ustilaginoidea virens*) in Egypt/Falscher Reisbrand (*Ustilaginoidea virens*) in Ägypten. *J Plant Dis Prot.*, **111**:71-82.
3. BAITE, M. S., PRABHUKARTHIKEYAN, S. R. AND RAGHU, S., 2022, Biological control of a fungus *Ustilaginoidea virens* causing false smut of rice. *BioControl.*, **67**(3): 357-363.
4. BASHYAL, B. M., PARMAR, P., ZAIDI, N. W., SUNANI, S. K., PRAKASH, G. AND AGGARWAL, R., 2021, Improved methodology for the isolation of false smut pathogen *Ustilaginoidea virens* of rice. *Indian Phytopathol.*, **74**(7): 249-252.
5. CHETHANA, B. S., DEEPAK, C. A., RAJANNA, M. P., RAMACHANDRA, C., SHIVAKUMAR, N., 2016, Current scenario of rice diseases in Karnataka. *Int. J. Nat. Sci.*, 405-412.
6. DAS, T. P., ANITH, K. N. AND JAYARAJAN, M., 2000, New weed host of *Epheliox oryzae*, the causal organism of 'Udbatta' disease of rice from Kerala. *Indian Phytopathol.*, **53**(2): 234.
7. FAN, J., LIU, J., GONG, Z. Y., XU, P. Z., HU, X. H., WU, J. L., LI, G. B., YANG, J., WANG, Y. Q., ZHOU, Y. F. AND LI, S. C., 2020, The false smut pathogen *Ustilaginoidea virens* requires rice stamens for false smut ball formation. *Environ. Microbiol.*, **22**(2): 646-659.
8. FEI, L. W., LU, W. B., XU, X. Z., YAN, F. C., ZHANG, L. W., LIU, J. T., BAI, Y. J., LI, Z. Y., ZHAO, W. S., YANG, J. AND PENG, Y. L., 2019, A rapid approach for isolating a single fungal spore from rice blast diseased leaves. *J. Integr. Agric. Agric.*, **18**: 1415-1418.

9. GUO, X., L. I, Y., FAN, J., L. I, L., HUANG, F. AND WANG, W., 2012, Progress in the study of false smut disease in rice. *J. agricultural sci. technol., A*, **11**: 32-41.
10. HARSHA, A., RAJESWARI, B., KRISHNAVENI, D. AND KESHAVULU, K.. 2016, Studies on seed mycoflora with reference to seed discolouration of popular rice (*Oryza sativa* L.) cultivars. *Int J. Res.*, **11**: 3285-3287.
11. HONG-PING, J., 2001, Preliminary study on isolation technique and culture conditions of *U. virens* (Cke) Tak. Heilongjiang agricultural sciences **3**: 26-27. (in Chinese with English abstract).
12. IMOLEHIN, E.D., 2019, Rice seedborne fungi and their effect on seed germination. *Plant Dis.*, **67**(12): 1334-1336.
13. JAGADEESH, D., PRASANNA KUMAR, M. K. AND DEVAKI, N. S., 2018, A simple and reliable method for obtaining monoconidial culture and storage of *Magnaporthe oryzae*. *Int. J. Life Sci.*, **6**: 540-543.
14. JIA, Y.L., 2009, A user-friendly method to isolate and single spore the fungi *Magnaporthe oryzae* and *Magnaporthe grisea* obtained from diseased field samples. *Plant Health Prog.*, **7**: 234-254.
15. KUMAR, K., 1998, Etiology, Host Range and Management of Udbatta Disease of Foxtail Millet (*Setaria Italica* (Lin.) Beauv). Ph. D Thesis. Univ. Agric. Sci., Bangalore.
16. KUMAR, M. K., MANJULA, C. P. AND REHMAN, A. U., 2016, Managing blast and udbatta diseases in rice by seed treatment. *IJPP.*, **44**(1): 104-109.
17. LADHALAKSHMI, D., LAHA, G. S., SINGH, R., KARTHIKEYAN, A., MANGRAUTHIA, S. K., SUNDARAM, R. M., THUKKAIYANNAN, P. AND VIRAKTAMATH, B. C., 2012, Isolation and characterization of *Ustilaginoidea virens* and survey of false smut disease of rice in India. *Phytoparasitica.*, **40**(6): 171-176.
18. LEWIS R, E AND WHITE, J. R. 2006, Black choke disease caused by an *Ephelis* sp. on purple fountain grass in Maryland. *Plant Dis*, **90**(1): 112-112.
19. LIN, X., BIAN, Y., MOU, R., CAO, Z., CAO, Z., ZHU, Z. AND CHEN, M., 2018, Isolation, identification, and characterization of *Ustilaginoidea virens* from rice false smut balls with high ustilotoxin production potential. *J. Basic Microbiol.*, **58**(8): 670-678.
20. MANOMOHAN, T. P. ANITH, K. N. AND JAYA RAJAN, M., 2000, New weed host of *Ephelis oryzae*, the causal organism of Udbatta' disease of rice from Kerala, *Indion Phytopathol.*, **53**(2): 214.
21. NAGARAJA, A., CHETHANA, B. S. AND JAIN, A. K., 2021. Biotic stresses and their management. In *Millet and Pseudo Cereals* (pp. 119-142). Woodhead Publishing.

22. NAGARAJA, A., REDDY, B. A. AND GOVINDAPPA, M. R., 2010, Occurrence of Udbatta disease on Kodo millet (*Paspalum scrobiculatum* L), a new report from South India. *J. Mycopathol. Res.*, **48**(1): 163-164.
23. NARAYAN, C., 2014, Studies on Udbatta disease of paddy caused by *Ephelis oryzae* Sydow., *M. Sc. (Agri) Thesis*, Univ. Agric. Sci., Bangalore (India).
24. QIU, X. Y., TANG, Z. P., ZHANG, M. AND JING, H. Y., 2011, Research on the isolation method of single spore of most plant pathogenic fungi. *J. Anhui Agric. Sci. Aliases.*, **39**: 5263–5264.
25. RAJASHEKARA, H., PRAKASH, G., PANDIAN, R. T. P., SARKEL, S., DUBEY, A., SHARMA P., CHOWDARY, V., MISHRA, D., SHARMA, T. R. AND SINGH, U. D., 2017, An efficient technique for isolation and mass multiplication of *Magnaporthe oryzae* from blast infected samples. *Indian Phytopathol.*, **69**: 260-265.
26. SHIVRAJ, N., NARAYAN, S. AND RAMESHWAR, M. U., 2018, Statistical Design and procedure of lab experiments. Univ. Agric. Sci., Raipur (India).
27. SOODAMANI, A. AND VAIKUNTAVASAN, P., 2023, Survey and Isolation of Rice False Smut Pathogen *Ustilaginoidea virens* (Cooke) Takahashi. *Int. J. Plant Soil Sci*, **35**(20): 277-283.
28. SRIVASTAVA, J. N., 2020, Kodo Millet or Kodo (*Paspalum scrobiculatum* L.) Diseases and Their Management Strategies. In *Diseases of Field Crops Diagnosis and Management* (pp. 273-290). Apple Academic Press.
29. TANAKA, E., KAWASAKI, S., MATSUMURA, K., KUSUDA R. TANAKA, C PENG, Y-L, TSUKIBOSHI, T. AND TSUDA, M., 2001, Phylogenetic studies of *Ephelis* species from various locations and hosts in Asia. *Mycol Res.*, **105**: 811-817.
30. TSUKIBOSHI, T., TAKAHASHI, K., UEGAKI, R. AND SUGAWARA, K., 2008, Black choke disease of warm season grasses caused by *Ephelis japonica* in Japan and its epiphytic features. *Jpn. Agric. Res. Q: JARQ*, **42**(3): 173-179.
31. WANG, W. M., FAN, J. AND JEYAKUMAR, J. M. J., 2019, Rice false smut: an increasing threat to grain yield and quality. *Indian Phytopathol.*, **7**(4): 89-108.
32. YANG, J., ZHAO, X., SUN, J., KANG, Z., DING, S., XU, J. R. AND PENG, Y. L., 2010, A novel protein Com1 is required for normal conidium morphology and full virulence in *Magnaporthe oryzae*. *Mol. Plant Microbe Interact.*, **23**: 112–123.

