

## Population Dynamics, Incidence, and Damage of *Myzus persicae* on *Capsicum annuum* under Polyhouse Conditions in Kashmir Valley

### ABSTRACT

An experiment was conducted to assess the population dynamics, incidence, leaf damage and severity of green peach aphid (*M. persicae*) infesting on capsicum (*Capsicum annuum*) under polyhouse condition in Kashmir valley. The present studies revealed that *M. persicae* was associated with the capsicum crop throughout the growing season with significant crop damage by the pest. Infestations including pest incidence, damage and severity of aphid forms commenced from early crop stage and thereafter, the population of aphid nymphs, apterous and alate forms gradually increased and peak in the 1<sup>st</sup> fortnight of August (32<sup>nd</sup> Standard Meteorological Week) and decline at the time of maturity of crop. Further correlation studies revealed that population of *M. persicae* exhibited statistically significant positive correlation with temperature and a non-significant negative correlation with Relative humidity. \

Keywords: population dynamics, *Myzus persicae*, *Capsicum annuum*, Polyhouse Conditions

### INTRODUCTION

Capsicum is indeed a globally cultivated Solanaceous vegetable crop and due to high market demand in both fresh and processed forms, with major producers being China, India, Indonesia and Mexico, which together contribute significantly to the Capsicum production (FAO, 2021, Kumar *et al.*, 2021). It is rich in essential vitamins and antioxidants, making it beneficial for human health (Wahyuni *et al.*, 2020) and also help in reducing the risk of chronic diseases such as cardiovascular disorders and certain cancers (Kim *et al.*, 2021). In Jammu & Kashmir, the cultivation area for *Capsicum* is estimated at around 1,500 hectares, with a production volume of approximately 12,000 metric tons annually (Mir *et al.*, 2021).

The pests causing significant damage to capsicum crops are diverse, comprising more than 39 genera and 51 species of insects and mites and among these pests that can cause significant damage to capsicum crops, particularly under protected cultivation are green peach aphid (*Myzus persicae* Sulzer), melon aphid (*Aphis gossypii* Glover), whiteflies (*Bemisia tabaci* Genn), thrips (*Scirtothrips dorsalis* Hood), Mites (*Polyphagotarsonemus latus* Banks) and Fruit borers (*Spodoptera litura* Fabricius and *Helicoverpa armigera*

Hubner). These pests collectively pose a significant threat to capsicum crops, affecting both the quality and quantity of the yield (Hosamani *et al.*, 2005).

The presence of vectors for viral diseases adds an additional layer of complexity to pest management (Khan and Parvaiz, 2024). Integrated pest management strategies that consider the specific characteristics of each pest and their interactions are essential for effectively mitigating the impact on capsicum cultivation, particularly in protected environments (Kandasamy *et al.*, 1990). The green peach aphid (*Myzus persicae*) is an important pest of capsicum primarily because it transmits viral diseases that impact plant growth and yield (Blackman and Eastop, 2021; Khan *et al.*, 2020). The information emphasizes the dual role of *Myzus persicae* acting not only as direct damaging agent but also as vector for the transmission of viral diseases in capsicum crops (Khan and Shah, 2017). The transmission of viral diseases by these pests' results in various symptoms, including Necrosis (cell death), wilting, chlorosis, stunted growth, defoliation (loss of leaves), flower abortion and fruit abortion (Sayed *et al.*, 2019). The secretion of honeydew by pests, including aphids, leads to the development of sooty mold which negatively affects the rate of photosynthesis in the crop (Shah, 2015; Parvaiz and Khan, 2022.).

In greenhouse conditions, however, aphid populations may persist year-round due to controlled temperatures, leading to continuous infestations and increased viral transmission risks (Tang *et al.*, 2019; Van Emden and Harrington, 2017). Other pest like whiteflies are also caused serious damage in polyhouse crops, the infestation is more in tomato and floriculture crops in Kashmir (Nissar *et al.*, 2019 and 2022). This research provides critical insights into the population dynamics, incidence, and damage of *Myzus persicae* on *Capsicum annuum* under controlled polyhouse conditions in the unique agro-climatic context of Kashmir Valley. It bridges a significant gap in understanding how environmental factors within polyhouses influence aphid infestations, offering valuable data for pest management strategies tailored to protected cultivation. The findings are particularly relevant for optimizing *Capsicum* yields, informing integrated pest management (IPM) approaches, and supporting sustainable agricultural practices in similar high-altitude regions. This work contributes to advancing knowledge in entomology, horticulture, and climate-adaptive crop protection

## MATERIAL AND METHODS

**Polyhouse and plant materials:** An experiment was carried out on aphid infestation on capsicum under protected cultivation at Experimental farm, Faculty of Horticulture, Sher-e-Kashmir University of Agricultural Sciences and Technology of Kashmir, Shalimar Campus, Srinagar-190025, Jammu and Kashmir, India during year 2020-21. Seedlings of different varieties of capsicum viz., Sp-461 Ly, California wonder red and Nishat-1 were raised in the nursery, and were transplanted in vegetable poly houses as per the package of practice recommended by Sher-e-Kashmir University of Agricultural Sciences and Technology of Kashmir, Shalimar Campus, Srinagar-190025, Jammu and Kashmir, India in the month of May, 2020. The distance from row to row and plant to plant was maintained at 50cm × 45cm respectively. The purpose of the study was to determine the status of the aphid pest infesting capsicum under protected cultivation.

**Population dynamics:** Population density of aphid was recorded using standard procedures on randomly selected nine (09) plants from each plot and replicated thrice (03). Observations were recorded at weekly intervals throughout the growing season, during the morning hours on a specific day (s). Different stages of the green peach aphid (*M. persicae*) viz., nymph, apterous and alate populations were recorded from three leaves per plant from the upper, middle and lower portions. The correlation between weather parameters (Temperature and Relative humidity) and population density of aphid pest was worked out to study the impact of abiotic factors in population build-up of the pest.

**Pest incidence:** It was observed by examining nine randomly selected plants per plot. The per cent incidence was calculated by using the formula:

$$\text{Per cent incidence} = \frac{\text{Number of damaged plants}}{\text{Total number of plants examined}} \times 100$$

**Leaf damage:** It was observed in similar manner by examining 27 leaves from upper, middle, lower strata of the plant in each plot. The per cent leaf damage was calculated by the following formula:

$$\text{Per cent leaf damage} = \frac{\text{Number of damaged leaves}}{\text{Total number of leaves examined}} \times 100$$

**Pest severity:** The severity of aphid was estimated by a visual rating method and was calculated as per infestation scale advocated by Nagrare *et al.* (2011):

- Grade 1 : Scattered appearance of few aphids on the plant leaves;
- Grade 2 : Severe infestation of aphids on any one leaves of the plant;
- Grade 3 : Severe infestation of aphids on more than one leaf or half portion of the plant;
- Grade 4 : Severe infestation of aphids on the whole plant.

$$\text{Severity Index (SI)} = \frac{\text{Sum of total grade points (1-4 infestation grade) of the infested plants}}{\text{Total number of infested plants observed}}$$

**Statistical analysis:** Correlation and regression co-efficient between population density of *M. persicae* and abiotic factors on capsicum under protected cultivation were analysed by R-software (R Core Team 2020).

## RESULTS AND DISCUSSION

**Population dynamics:** The population density of green peach aphid *M. persicae* nymphs commenced from 24<sup>th</sup> SMW whereas, both apterous and alate forms started from 25<sup>th</sup> SMW with mean population of 0.81, 0.86 and 0.20 aphid forms/leaf; respectively. Thereafter, the population of aphid nymphs, apterous and alate forms gradually increased up to 32<sup>nd</sup> SMW and peaked to 10.36, 7.44 and 6.66 aphid forms/leaf (Table 1). Aphid population subsequently declined to 0.03 aphids/leaf during 39<sup>th</sup> SMW. The present findings are in conformity with the results of Roopa and Kumar (2014) who observed the peak population of *M. persicae* during fourth week of October (2.21aphids/leaf). The results are in agreement with the findings of Rafee and Havanoor (2018) who too confirmed initiation of aphid, *M. persicae* population in 33<sup>rd</sup> SMW and its density ranged from 0.29 to 2.48 aphids per leaf; with peak population as 2.48 per leaf during 43<sup>rd</sup> SMW (Figure 1). The variation in the peak activity might be due to change in sowing dates and change in climatic condition. The results are also in congruence with the findings of Choudhary *et al.* (2021) and Karami *et al.* (2018).

The mean population of aphid exhibited statistically significant positive correlation with temperature ( $r = 0.656$ ) and a non- significant but negative correlation with relative humidity ( $r = -0.405$ ). Regression equation too revealed a variability of 55 per cent ( $R^2 = 0.55$ ) in aphid population (Table 2) .The present findings are in agreement with the results of Yaqoob *et al.* (2019) who too reported statistically significant positive correlation with

temperature ( $r = 0.331$ ) and a non-significant but negative correlation with relative humidity ( $r = -0.323$ ). The studies are also in accordance with findings of Sri *et al.* (2017) and Hosseini *et al.* (2020) who reported a significant and positive correlation of major sucking pests with temperature and negative association with relative humidity.

**Pest incidence and leaf damage:** Perusal of data presented in Table 3 revealed that the incidence of *M. persicae* initiated from 24<sup>th</sup> SMW as 7.41 per cent and gradually increased to 11.11, 22.22, 37.04, 48.15, 59.26, 66.67, 70.37 per cent during 25<sup>th</sup>, 26<sup>th</sup>, 27<sup>th</sup>, 28<sup>th</sup>, 29<sup>th</sup>, 30<sup>th</sup> and 31<sup>st</sup> SMW respectively. The maximum pest incidence as 77.78 per cent recorded during 32<sup>nd</sup> SMW decreased to 74.07, 62.96, 40.74, 33.33, 18.51, 14.81 per cent in 33<sup>rd</sup>, 34<sup>th</sup>, 35<sup>th</sup>, 36<sup>th</sup>, 37<sup>th</sup> and 38<sup>th</sup> SMW, respectively. However, the minimum aphid pest incidence as 3.70 per cent was recorded during 39<sup>th</sup> SMW corresponding to last week of September. The results are in agreement with the findings of Mdellel and Kamel, (2014) who confirmed that maximum incidence of 92.93 per cent and minimum incidence of 51.4 per cent of aphid, *M. persicae* on different varieties of capsicum. The results are also in agreement with the findings of Kumar and Gavkare (2014) who recorded pest incidence of *M. persicae* at different stages of the crop which varied from 19.25 to 68.95, 42.25 to 73.25, 37.58 to 74.85 and 30.56 to 88.54 per cent at four locations from July to September. The peak incidence of aphids was also noticed in 3<sup>rd</sup> week of July by Dugger and Richer, 1998. Further, the results are also in line with Dhamdhare *et al.* (1984) who reported peak population of *A. gossypii* during last week of June. Though, Pareek and Kavadia (1986) too observed aphid attacking bottle gourd from third week of July till end of November with peak population in first fortnight of September while as the leaf damage caused due to aphid, *M. persicae* initiated from 24<sup>th</sup> SMW as 14.81 per cent, which gradually increased to 25.92, 29.62, 40.74, 55.55, 62.96, 70.37 and 74.07 per cent during 25<sup>th</sup>, 26<sup>th</sup>, 27<sup>th</sup>, 28<sup>th</sup>, 29<sup>th</sup>, 30<sup>th</sup> and 31<sup>st</sup> SMW respectively. The maximum leaf damage as 81.48 per cent during 32<sup>nd</sup> SMW and minimum as 7.40 per cent was recorded during 39<sup>th</sup> SMW. Present findings are in confirmation with the results of Nemade *et al.* (2018) who observed maximum aphid population (43.56 per cent) in 33<sup>rd</sup> SMW. The results are also in agreement with the findings of Chaudhary and Pandya, (2019) who revealed that aphid population started from 41<sup>st</sup> SMW (1.36/3 leaves) and gradually increased to peak population (10.05/3 leaves) during 45<sup>th</sup> SMW.

**Pest severity:** The severity of *M. persicae* as 0.50 which was recorded during second week of June (24<sup>th</sup> SMW), thereafter aphid pest severity increased in subsequent weeks and was highest as 7.00 during 32<sup>nd</sup> SMW and thereafter decreased to lowest as 2.33 during 39<sup>th</sup> SMW corresponding to last week of September (Table 3). The present findings are in consonance with the results of Kataria and Kumar (2012) who determined pest severity of aphid, *A.gossypii* infesting cotton using 1-4 scale as given by Nagrare *et al.* (2011) who revealed that infestation was observed from September till April and infestation level of *M. persicae* was grade 3 and grade 2 in case of field crops and vegetable respectively as per the infestation scale.

## **CONCLUSION**

In conclusion, the present research resulted that the *M. persicae* was associated with the Capsicum crop throughout the growing season with significant crop damage by the pest. Infestations including pest incidence, damage and severity of aphid forms commenced from early crop stage and thereafter, the population of aphid nymphs, apterous and alate forms gradually increased and decline at the time of maturity of crop. The population of aphid exhibited statistically significant positive correlation with temperature and a non-significant but negative correlation with relative humidity.

Disclaimer (Artificial intelligence)

Option 1:

Author(s) hereby declare that NO generative AI technologies such as Large Language Models (ChatGPT, COPILOT, etc.) and text-to-image generators have been used during the writing or editing of this manuscript.

Option 2:

Author(s) hereby declare that generative AI technologies such as Large Language Models, etc. have been used during the writing or editing of manuscripts. This explanation will include the name, version, model, and source of the generative AI technology and as well as all input prompts provided to the generative AI technology

Details of the AI usage are given below:

- 1.
- 2.

3.

## REFERENCES

1. Blackman, R. L., and Eastop, V. F. (2021). *Aphids on the World's Herbaceous Plants and Shrubs*. Wiley-Blackwell.
2. Chaudhary, A. T. and Pandya, H. V. (2019). Investigations on population dynamics of sucking pests infesting chilli (*Capsicum annum* L.). *Journal of Entomology and Zoology Studies*, 7(4), 812-817
3. Choudhary, S., Khinchi, S. K. and Kumawat, K. C. (2021). Seasonal abundance of major sucking insect pest of cowpea, *Vigna unguiculata* (Linn.) Walp. and their natural enemies. *The Pharma Innovation Journal*, SP-10(10), 685-688.
4. Dhamdhare, S. V., Bahadur, J. and Misra, U. S. (1984). Studies on occurrence and succession of pests of okra at Gwalior. *Indian Journal of Plant Protection*, 12(1): 9-12.
5. Dugger, S. B. and Richer, D. (1998). Mid-season cotton aphids infection in California, effect on cotton yield. *Proceeding of Beltwise Cottan Conference*, pp. 1056-1058.
6. FAO. (2021). *FAOSTAT Statistical Database on Global Capsicum Production*. Retrieved from <https://www.fao.org/faostat/>
7. Hosamani, A.C., Thulasiram, K., Patil, B.V., Bheemana, M. and Hanchinal, S.G. (2005). Fenprothrin (Meothrin) 30 EC an ideal insecticide for chilli (*Capsicum annum* L) pest management. *Pestology*, 24 (2), 21-24.
8. Hosseini, R., Allahyari, H., and Rafiee-Dastjerdi, H. (2020). Influence of temperature on the biological parameters of *Myzus persicae* (Hemiptera: Aphididae) on different host plants. *Journal of Economic Entomology*, 113(5), 2237-2244. <https://doi.org/10.1093/jee/toaa111>
9. Kandasamy, C., Mohanasundaram, M. and Karuppachamy, P. (1990). Evaluation of insecticides for the control of thrip *Scirtothrips dorsalis* Hood in chillies (*Capsicum annum* L.). *Madras Agricultural Journal*, 77, 169-172.
10. Karami, E., Jalalizand, A., and Moravvej, G. (2018). Seasonal population

dynamics of green peach aphid (*Myzus persicae*) on greenhouse bell peppers (*Capsicum annuum*). *Acta Horticulturae*, 1292, 273-279.

<https://doi.org/10.17660/ActaHortic.2018.1292.38>

11. Kataria, R. and Kumar, D. (2012). Occurrence and Infestation level of sucking pests: Aphids on various host plants in Agricultural fields of Vadodara, Gujarat (India). *International Journal of Scientific and Research Publications*, 2(7), 1-6.
12. Khan, A. A. and Parvaiz, B. (2024). Impact of Inoculative Releases of *Trichogramma chilonis* for *Helicoverpa armigera* and *Hippodamia variegata* for *Myzus persicae* in Ecologically Engineered Tomato Ecosystem of Kashmir. *Indian Journal of Ecology*, 51(4), 891-894.
13. Khan, A. A. and Shah, M. A. (2017). Records of aphid and their natural enemies in agro-ecosystem with special reference to horticulture ecosystem of Kashmir. *Journal of Entomology and Zoology Studies* 5(4): 189-203.
14. Khan, A. A., Meinaz, N., Kundoo, A. A., & Rasool, I. (2020). Sucking pests of temperate Vegetables. (Book Chapter). *Sucking pests of crops* (eds): Omkar. Springer Nature Singapore Pte Ltd. pp341-367.  
[https://doi.org/10.1007/978-981-15-6149-8\\_11](https://doi.org/10.1007/978-981-15-6149-8_11)
15. Kim, J., Choi, H., Kim, S., and Yeom, S. I. (2021). Advances in *Capsicum* genomics and breeding for disease resistance. *Horticulture Research*, 8, 79.  
<https://doi.org/10.1038/s41438-021-00509-2>
16. Kumar, R., Singh, P., and Sharma, A. (2021). Capsicum cultivation in India: Advances and challenges in sustainable production. *Indian Journal of Horticulture*, 78(2), 194-202. <https://doi.org/10.1016/j.indhort.2021.023>
17. Kumar, S. and Gavkare, O. (2014). Incidence of the green peach aphid *Myzus persicae* (Sulzer) on sweet pepper under greenhouse environment. *Himachal Journal of Agricultural Research*, 40(1), 84-86.
18. Mdellel, L. and Kamel, M. B. H. (2014). Effects of different varieties of pepper (*Capsicum annum* L.) on the biological parameters of the green peach aphid *Myzus persicae* Sulzer (Hemiptera, Aphididae) in Tunisia. *European Journal of Environmental Sciences*, 4(2), 103-108.

19. Mir, R. A., Yousuf, A., and Lone, A. A. (2021). Status and scope of capsicum cultivation in Jammu & Kashmir: A review. *Journal of Horticultural Sciences*, 16(1), 12-18. <https://doi.org/10.2134/jhs.2021.10002>
20. Nagrare, V.S., Kranthi, S., Kumar, R., Dhara jothi, B., Amutha, M., Deshmukh, A.J., Bisane, K.D and Kranthi, K.R. (2011). Compendium of Cotton Mealybugs. Technical Bulletin, Central Institute for Cotton Research, Nagpur, P 42.
21. Nelson, S. J. and Natarajan, S. (1994). Economic threshold level of thrips in Semi-dry chilli. *South Indian Horticulture*, 42, 336-338.
22. Nissar, M., Khan, A.A., Khan, Z. H., Masoodi, Z K., Khan, A. A., Wani, W. M., Hussain K., Naik, H. R. and Nazir, N. (2019). Population dynamics of whitefly (*Bemisia tabaci*, Gennadius) on tomato (*Solanum esculentum*, Mill.) crop under protected conditions in Kashmir. *Journal of Entomology and Zoology Studies*, 7(4), 804-807
23. Nissar, M., Khan, A.A., Mushtaq, T., Pathania, S.S. and Sherwani, A. (2022). Influence of abiotic environment on the population dynamics of whitefly (*Trialeurodes vaporariorum*) on gerbera (*Gerbera jamesonii*) under protected cultivation. *The Pharma Innovation Journal*, SP-11(9), 1737-1741.
24. Nemade, P. W., Budhvat, K. P. and Wadaskar, P. S. (2018). Population dynamics of sucking pests with relation to weather parameters in Bt cotton in Buldana district, Maharashtra, India. *International Journal of Current Microbiology and Applied Sciences*, 7(1), 620-626.
25. Pareek, B. L. and Kavadia, V. S. (1986). Seasonal incidence of insect pest of cucurbits in Rajasthan. *Annals of Arid Zone*, 25(4), 300-311.
26. Parvaiz, B. and Khan A. A. (2022). Conservation of Predatory Fauna and Decline of Insect Pests Status in Ecologically Engineered Tomato Ecosystem of Kashmir. *International Journal of Ecotoxicology and Ecobiology*, 7(3), 49-59.
27. R Core Team. (2020). R: a language and environment for statistical computing. Vienna (Austria): R Foundation for Statistical Computing. URL <http://www.R-project.org>.
28. Rafee, M. C. and Havanoor, R. 2018. Seasonal incidence of sucking pests of chilli (*Capsicum annum* L.) and their natural enemies. *Journal of Entomology and Zoology Studie*, 6 (4), 1786-1789.

29. Roopa, I. M. and Kumar, C. T. A. (2014). Seasonal Incidence of Pests of Capsicum in Bangalore Conditions of Karnataka, India. *Global Journal of Biology, Agriculture and Health Sciences*, 3(3), 203-207.
30. Sayed, S. M., Ali, E. F. and Al-Otaibi, S. S. (2019). Efficacy of indigenous entomopathogenic fungus, *Beauveria bassiana* (Balsamo) Vuillemin, isolates against the rose aphid, *Macrosiphum rosae* L. (Hemiptera: Aphididae) in rose production. *Egyptian Journal of Biological Pest Control*, 29 (1), 1-7.
31. Shah, M. A. (2015). Taxonomic studies on Aphididae in Temperate Horticulture Ecosystem in Kashmir. Ph.d thesis, Division of entomology, Faculty of Horticulture SKUAST-Kashmir pp. 199.
32. Sri, N. R., Jha, S. and Latha, N. S. (2017). Insect Pests of Tomato and Their Weather Relations under Open and Cover Cultivation. *International Journal of Current Microbiology and Applied Science*, 6(9), 368-375.
33. Tang, X., Liu, C., and Yang, Z. (2019). Effects of greenhouse conditions on population dynamics of *Myzus persicae* infesting *Capsicum annuum* and implications for IPM. *Agricultural and Forest Entomology*, 21(4), 457-464. <https://doi.org/10.1111/afe.12322>
34. Van Emden HF, Harrington R. (2017). *Aphids as Crop Pests*. CAB International. Studies on aphid behavior and population dynamics in greenhouse environments.
35. Wahyuni, Y., Sudarmonowati, E., and Sutjahjo, S. H. (2020). Breeding resistant *Capsicum annuum* cultivars to *Phytophthora capsici* for sustainable production. *Plant Pathology Journal*, 36(4), 331-342. <https://doi.org/10.5423/PPJ.OA.02.2020.0032>
36. Yaqoob, M., Ain, U. Q. and Ayoub, L. (2019). Seasonal incidence of aphid, *Aphis gossypii* infesting okra and its relation with weather parameters. *Journal of Entomology and Zoology Studies* 7(4): 672-674.

Table 1: Population density of green peach aphid, *M. persicae* on capsicum under protected cultivation

Standard Meteorological Week (SMW)	Date of observation	Temperature (°C)	Relative Humidity (%)	Mean aphid population density / leaf			Total aphid population
				Nymphs	Apterous	Alate	
23	07-06-2020	24.97	59.86	0.00	0.00	0.00	0.00
24	14-06-2020	25.65	59.83	0.81	0.00	0.00	0.81
25	21-06-2020	25.36	60.03	1.67	0.86	0.20	2.73
26	28-06-2020	24.05	58.22	2.41	1.88	1.03	5.32
27	05-07-2020	25.18	56.79	3.25	2.41	2.02	7.68
28	12-07-2020	26.26	60.48	4.25	3.58	2.92	10.75
29	19-07-2020	26.30	57.67	06	4.18	3.58	13.76
30	26-07-2020	26.14	61.89	6.39	5.55	4.44	16.4
31	02-08-2020	26.71	57.65	7.53	6.28	5.55	19.4
32	09-08-2020	27.44	55.46	10.36	7.44	6.66	24.46
33	16-08-2020	26.85	56.56	7.03	6.07	5.44	18.54
34	23-08-2020	24.26	66.96	4.86	3.83	5.89	14.58
35	30-08-2020	22.64	74.46	4.71	3.55	1.96	10.22
36	06-09-2020	22.60	78.81	2.81	3.51	2.12	8.44
37	13-09-2020	21.75	70.62	2.51	1.25	0.71	4.47
38	20-09-2020	20.90	73.08	0.14	0.09	0.09	0.33
39	27-09-2020	19.96	74.85	0.00	0.03	0.00	0.03
Mean of 3 replication							

Table 2: Correlation and regression co-efficient between population density of *M. persicae* and abiotic factors on capsicum under protected cultivation

Abiotic factors	Correlation co-efficient (r)	p-value	Regression equation	Co-efficient of determination (R <sup>2</sup> )
Temperature (°C)	0.656	0.002	$Y = \beta_0 + \beta_1 X_1 + \beta_2 X_2 + \varepsilon$	R <sup>2</sup> = 0.55
Relative humidity (%)	-0.40	0.054	$Y = 142.88 + 4.37X_1 + 0.70X_2$	

Significant at p < 0.05

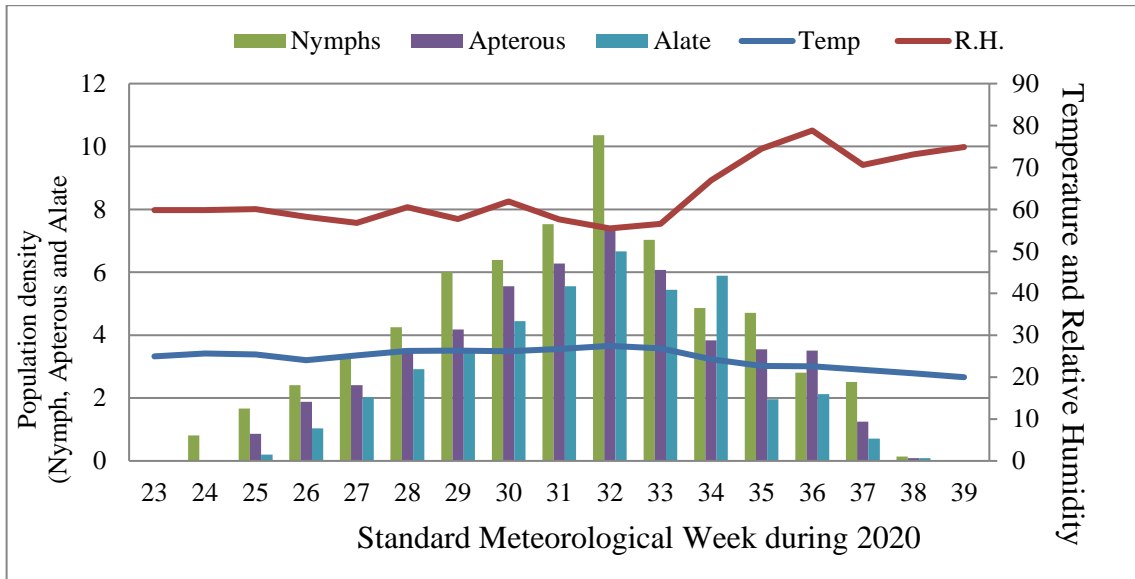
Table 3: Pest incidence, leaf damage and severity index of green peach aphid, *M. persicae* on capsicum under protected cultivation

Standard Meteorological Week (SMW)	Date of observation	Pest incidence (per cent)	Leaf damage (per cent)	Severity index
23	07-06-2020	0.00	0.00	0.00
24	14-06-2020	7.41	14.81	0.50
25	21-06-2020	11.11	25.92	1.79
26	28-06-2020	22.22	29.62	2.00
27	05-07-2020	37.04	40.74	2.00
28	12-07-2020	48.15	55.55	2.06
29	19-07-2020	59.26	62.96	2.17
30	26-07-2020	66.67	70.37	2.20
31	02-08-2020	70.37	74.07	2.23
32	09-08-2020	77.78	81.48	7.00
33	16-08-2020	74.07	74.07	5.50
34	23-08-2020	62.96	59.25	5.33
35	30-08-2020	40.74	44.44	4.83
36	06-09-2020	33.33	29.62	4.82
37	13-09-2020	18.51	18.51	2.82
38	20-09-2020	14.81	11.11	2.50
39	27-09-2020	3.70	7.40	2.33

\* Incidence: 3 leaves per plant (9 plants/plot)

\* Leaf damage: 3 leaves per plant (27 leaves/plot)

Figure 1: Population density of green peach aphid, *M. persicae* in relation to temperature ( $^{\circ}\text{C}$ ) and relative humidity (%) on capsicum under protected cultivation



UNDER PEER REVIEW