

Original Research Article

Assessment of Human-Wildlife Conflict: A Case Study of Kothale Village in the Kalsubai Harishchandragad Wildlife Sanctuary (KHWS), Maharashtra (India)

ABSTRACT:

Human-wildlife conflict refers to the interaction between humans and wild animals those results in negative impacts on both sides. The human-wildlife conflict revolves around the clashes that arise when human activities intersect with natural habitats and the behavior of wild animals. It encompasses various scenarios where wildlife poses challenges or threats to human interests, safety, livelihoods, or property. This conflict often arises due to resource competition, crop damage, livestock predation, and human safety concerns. We conducted an assessment of HWCs around Kothale village in Kalsubai Harishchandragad Wildlife Sanctuary by exploring the nature, causes, and mitigation measures of HWCs. According to the 2011 census, 112 households were recorded in Kothale village, out of which information on human-wildlife conflict was collected from 51, ~~i.e., about 50% of households~~. About 25 families have temporarily migrated to other places for livelihood. Through the use of survey questionnaires, semi-structured interviews, group discussions, and observation, we identified the causes, consequences, and management approaches of human-wildlife conflict in the study area, along with the perspectives of the local people. The study discusses the local community's household characteristics, livestock, agricultural activities, crop raiding, local people's perceptions and attitudes towards wildlife, their experiences with wildlife, mitigation and management, etc. The survey revealed that during the five previous seasons, 86.27% of family farm crops suffered damage as a result of wild animal assaults. Wild animals have attacked 62.75% of livestock. Furthermore, wild animals have attacked 15.69% of people while they were maintaining agriculture and animals, resulting in incidents where they were injured. As a result of overexploitation, habitat degradation, and habitat fragmentation caused by human activity, the study found that the main causes of conflict were damage to crops and livestock and decreasing wildlife resources. The study further found that the most harmful species in the study area were the leopard, wild boar, sambar, deer, monkey, and wild cow. Many victims do not receive compensation because of a lack of awareness among local residents, administrative delays at the local level, and inadequate documentation. The local population thinks government aid is insufficient. Reducing human-wildlife

Commented [AM1]: Nearly 45%

conflict can be accomplished through promoting local people's awareness, constructing fences around farms, keeping animals out of the forest, constructing closed enclosures for livestock, improving public awareness of the issue, enhancing government funding for various levels of education and training, and providing compensation. We can reduce the severity of conflict among humans and wild animals by streamlining the process and making it immediate.

Key Words: *Human wildlife Conflict, crop damage, livestock, Sanctuary, compensation.*

INTRODUCTION:

Human activities have greatly dominated the 21st century environment, influencing every ecosystem on earth (1). Humans have transformed the earth's surface, allocating it for various land use types like agriculture, irrigation, or urban development, while also converting an additional area to pasture (2; 1). According to the human disturbance index, humans have disrupted around 75% of the Earth's liveable land surface (3). The UN reports that the rapidly growing global population, currently at 7 billion, will increase to 8.9 billion by 2050, accounting for a substantial portion of the human-caused influence (4). The expansion of human settlements and modifications to land use and natural ecosystems have reduced a significant portion of Earth's remaining biodiversity to small, fragmented areas within predominantly human-controlled landscapes (5). As human populations expand and natural habitats decrease, there is a growing competition between people and animals over living space and food, as expressed by the World Wildlife Fund (WWF) (6).

The term "human-wildlife conflict" refers to situations in which wildlife requirements and behaviours have a negative impact on human goals, or when human goals have a negative influence on wildlife needs. (WPC, 2003). According to the IUCN (2005), human-wildlife conflict (HWC) refers to a situation when the fundamental requirements of wildlife clash with those of humans, resulting in negative consequences for both human beings and wildlife (7; 8). Human-wildlife conflict refers to any interaction between humans and wildlife that leads to adverse effects on human social, economic, or cultural aspects, as well as the conservation of wildlife species and the environment. It occurs when humans or wildlife have negative impacts on each other (6) (9). Thirgood (2005) identifies five different types of human-wildlife conflict (HWC), which are crop raiding, predation on wild animals, predation on livestock, human attacks, and disease transmission (10). The most frequently reported

Commented [AM2]: Overall introduction part is satisfactory, but it is mostly generalized introduction. I suggest that include some National and Regional level studies, showing the seriousness of the human wildlife conflicts.

causes of conflicts with wildlife are crop raiding, animal depredation, human casualties, and property destruction (11; 12), (13).

Human-wildlife conflict arises across various scenarios and is characterized by its association with habitat, geographic location, vegetation, and climate, involving a vast array of species (10). The conflict has implications for the economy, the environment, society, and culture. Many wildlife species cause extensive harm to agriculture and livestock production. Whenever wildlife destroys crops or poses a threat to human life in nearby villages, the inhabitants perceive it as harm to their economy and their survival, particularly due to the absence of compensation policies in many African nations (14), (15).

The main causes of human-wildlife conflict include shifting cultivation, encroachment, and the escalating anthropogenic pressures resulting from mining, limited resources, and exploitation of natural resources. Further, retaliatory killings, floods, droughts, and the decline of natural forests due to increased monoculture plantations are other drivers of human-wildlife conflict. They pose a greater challenge to human-wildlife conflicts, conservation, and people's livelihoods around the world (16). The threat of human-wildlife conflict (HWC) is a widespread and escalating problem globally, exacerbated by the uncontrolled behaviours of both humans and wildlife. Human-wildlife conflict (HWC) is a significant concern for those engaged in conservation efforts as well as for inhabitants residing in the surrounding forest areas (17). It occurs when wildlife's needs and behaviours have a negative impact on human objectives (18). Both humans and wild animals have an adverse effect on human-wildlife conflict (HWC), harming its resources or habitat. The negative interactions can lead to (a) wild animals inflicting harm on crops; (b) theft of cattle; (c) injuries or deaths of humans; and (d) damage to households (17; 19).

Presently, there is a lack of awareness among human beings regarding the importance of wildlife in developing countries where human-wildlife conflict (HWC) is more prevalent. Furthermore, rural communities rely heavily on livestock and agriculture as a primary source of subsistence and income generation (20), (21). The main challenges surrounding national parks are crop damage, livestock depredation, and attacks on humans (22; 23), (24). Cattle have the greatest effect, with leopards being the most prevalent livestock predators, followed by hyenas (*Crocuta crocuta*) and

Commented [AM3]: Please use italic font style for scientific names.

African rock pythons (~~Python sebae~~) (25). Therefore, farmers perceive these animals as nuisances, as they provide a significant challenge for farmers that are located near national parks (26).

Commented [AM4]: Please use italic font style for scientific names.

Previous conflict management strategies included lethal control, translocation, population size restriction, and endangered species conservation. Present management strategies attempt to utilize scientific knowledge to achieve improved outcomes in areas such as behaviour modification and reducing interaction. Mitigating human-wildlife conflicts is crucial in the management of biodiversity and protected areas due to the associated direct, indirect, and opportunity costs (27; 28). In various parts of the world, the establishment of a protected areas (PAs) network has been the main strategy for long-term biodiversity protection (29). The increasing number of Protected Areas (PAs) has also clashed with established connections and the urgent needs of communities near them that rely on forest resources for their sustenance (30; 12). Agricultural land surrounds many park areas. People who live in close proximity to these national parks have engaged with them in a variety of ways. While the conflict over land use rights and practices has raised concerns about the continued existence of the national park in specific areas, others have successfully developed a beneficial and ecologically harmonious relationship with it (31; 12).

Wildlife aggression with humans is increasing, hindering efforts to promote amicable interactions with local communities while including them in conservation efforts. Several investigations indicate that poor communities rely more heavily on forest resources, which contributes to the difficulty of preserving protected areas to meet human and wildlife needs (32; 33; 12). Information concerning HWC can offer essential direction for determining future priorities in conservation, management, and exploration (34; 12). The successful implementation of effective wildlife management strategies and the establishment of extensive networks of protected areas globally have resulted in the recovery of diminishing populations of numerous huge mammals. However, this positive outcome has also led to a rise in conflicts (35; 36; 37; 38).

In India, the current policy for mitigating conflicts with wild animals includes compensating for damages caused by the animals' attacks on livestock and humans, as well as capturing and relocating the animals instead of using lethal measures, which have been illegal since 1972. A comprehensive translocation effort apprehended a considerable number of leopards in regions predominantly inhabited by humans and subsequently released them into adjacent forests. Human-wildlife conflicts present a danger to human well-being, health, and security, frequently resulting in

financial and societal consequences (39; 40). Conflicts are more common in areas where livestock rearing and agriculture play a vital role in the countryside's economy. It has raised concerns about wildlife management and human and domesticated animal welfare. Nevertheless, significant conservation issues arise where the habitats of carnivores intersect with areas of high human population density. The leopard is the most prevalent carnivore, located in southern Africa, southern Asia, and India (41; 42; 40). The leopard has exceptional adaptation capacities due to its highly versatile food and hunting patterns, enabling it to cover vast distances (40; 43; 44; 45; 46). Several worldwide studies have examined the substantial contribution of domestic animals such as dogs, sheep, and goats to the leopard's diet. Leopards can also survive in areas ruled by humans, where there is less conflict (40; 47), (48).

OBJECTIVES:

This study aims to identify the ~~causes of human-wildlife conflict~~, hotspot areas, and compensation, as well as recommendations for an action plan to reduce human-wildlife conflicts while promoting balance between humans and the natural environment.

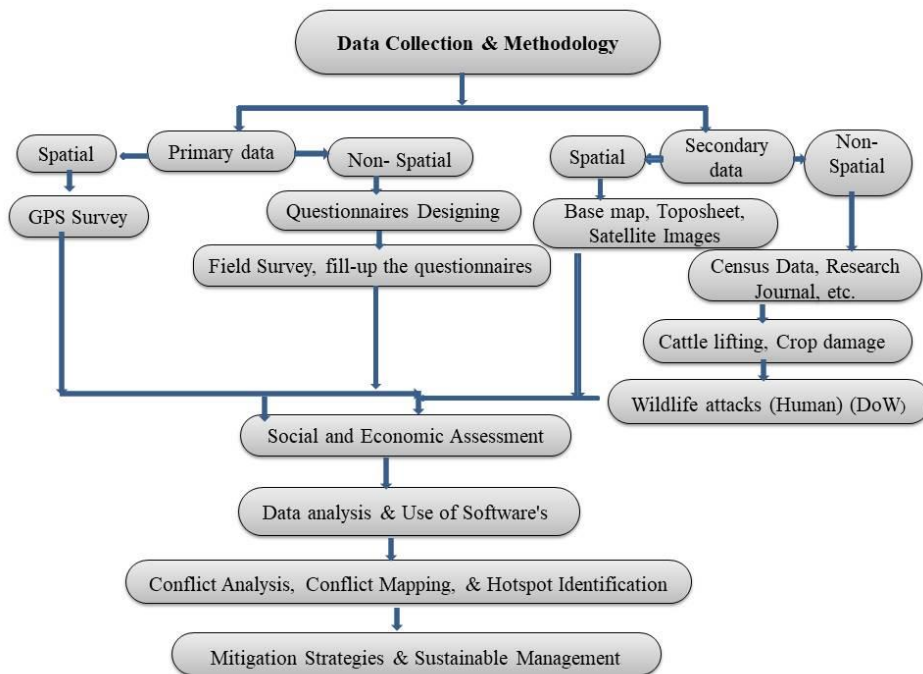
Commented [AM5]: Apart from agricultural pattern, your study doesn't mention any other major reasons. I suggest that use LULC pattern to identify change in the land pattern, which affected the HWC in the region, and used at least 3-decade data. Apart from it also mention some social/ cultural, ecological and economic reasons behind the increasing HWC phenomena in the study area.

DATA COLLECTION AND METHODOLOGY:

The study utilized both primary and secondary data sources, such as field visits, excursions, and conflict data. The primary data was collected with the help of questionnaires and field visits. Secondary data was collected from several sources, such as records of wildlife injury compensation from the forest department, literature, newspapers, published research, and reports. The researchers analyzed and interpreted the collected data using basic computer computation techniques based on MS Excel. ArcGIS software has been used for mapping in order to comprehend the spatial distribution of human wildlife conflicts in the study area. A flow diagram represents the accepted methodology for this analysis (Figure 1).

Commented [AM6]: What is the sampling period of the study?

Figure 1 Flow Chart of Methodology



DISCUSSION AND ANALYSIS:

Kothale village is situated in the Western Ghat's Kalsubai Harishchandragad Wildlife Sanctuary (KHWS) area. Hills covered the village's three sides, occupying a 797.24 hectare area. According to the 2011 census, 112 houses are present, and 98.22% of the tribal population is scheduled. These villagers mainly depend on agriculture, cattle, and forest resources for their daily livelihood. We conducted a survey on 112 out of 74 households, and one of the significant findings was that 25 of these households were temporarily migrating for job opportunities. According to the primary data collection, 94.59% of families (70) own their own agricultural land, and 77.03% of families (57) have livestock for domestic and agricultural purposes.

LAND USE AND LAND COVER:

For human subsistence, land is a vital natural resource and serves as the foundation for all terrestrial ecosystem services (49; 50; 51). Land degradation, particularly changes in land use and land cover (LULC), has emerged as a significant global issue (50; 52; 51). On a global scale, LULC changes have emerged as the main cause of ecosystem service change, and Africa is experiencing significant changes across the continent (53; 54; 51). African grassland, woodland, bush land, and other vegetation coverings have transformed into agricultural and settlement areas in the past few decades (55; 56; 51). Changes in land use and land cover (LULC) occur because of a complex relationship between institutional, social-economic, and environmental variables (57; 58; 59; 51). Changes in land use and land cover (LULC) have a significant impact on the environment's stability over time and space. This is due to their interconnection with various factors, such as local, regional, and global climate conditions, the carbon cycle, biodiversity stability, clean water availability, agriculture, and food security (51; 60; 61).

In 2023, we classified seven major LULC types: open, land with scrub, kharif+Rabi (double cropped), kharif, dense/closed, habitation, and water body. The results confirmed that the study area's total land area was 797.24 hectares. ~~The LULC classification shows that the majority of the study area was open, covering about 29.5 ha (3.7%).~~ Scrub land covered an area of 150.59 ha (18.89%), followed by Kharif + Rabi (Double Cropped) at 24.33 ha (3.05%) and Kharif at 6.74 ha (0.85%). In contrast, dense forest covered the maximum area of 557.12 ha (69.88%), with habitation located at 3.23 ha (0.4%) and a water body at 25.73 ha (3.23%) of the village's total area (Table No. 1 and Map No. 1). The existence of dense forests and hills is extremely beneficial for the habitat of wild animals, as it provides the largest area for them to survive.

LIVESTOCK ATTACK:

Kothale has a substantial community of individuals who have traditionally engaged in cattle rearing. These individuals engage in nomadic pastoralism, grazing livestock such as cattle, sheep, and goats. They migrate daily in search of suitable grazing land, grass, and water sources near their village and then return home in the evening. During this migratory movement, wild animals attack cattle (62).

Commented [AM7]: Please re-check this interpretation.

Agriculture and cattle rearing are the main sources of income and sustenance for the indigenous inhabitants of Kothale Village. The survey reveals that 77.03% of the residents in the community possess cattle.

Table No 1: Land Use Land Cover

Sr. No.	Land Use Land Cover	Area in hector	Area in %
1.	Open	29.5	3.7
2.	Land with scrub	150.59	18.89
3.	Kharif + Rabi (Double Cropped)	24.33	3.05
4.	Kharif	6.74	0.85
5.	Dense /Closed	557.12	69.88
6.	Habitation	3.23	0.4
7.	Water body	25.73	3.23

Map No: 1 Land use and Land Cover

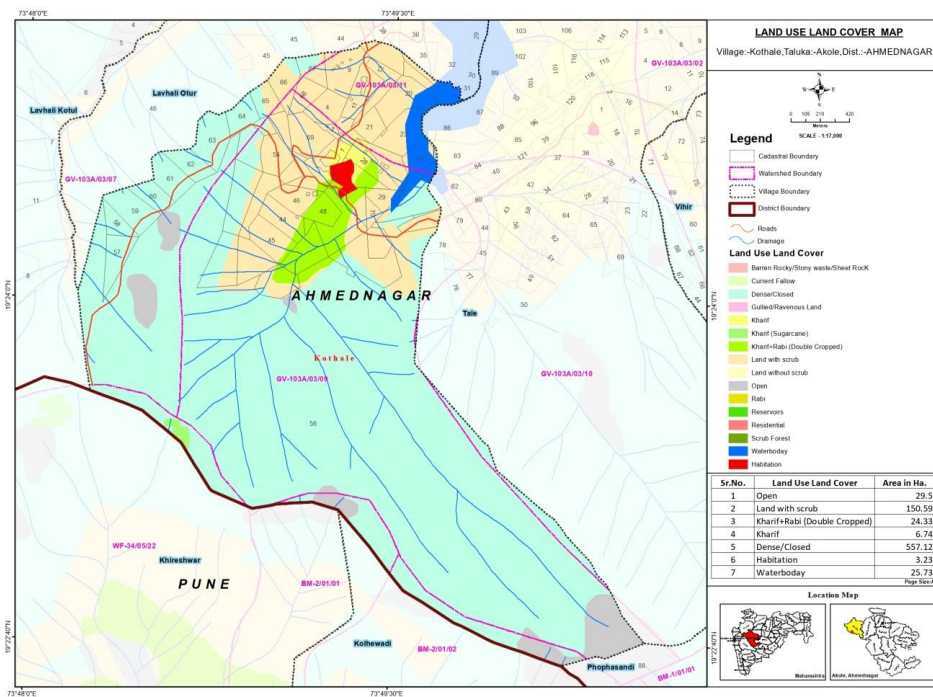


Table No: 2 Number of Livestock

Livestock	Goats	Cow (Cattle)	Hens	Oxen	Reda (Buffalo –Male)	Buffalo	Calves
No of Livestock	232	177	102	30	25	18	17
% Livestock	38.6	29.45	16.97	4.99	4.16	3	2.83

Based on the primary survey, there are a total of 601 livestock animals, which consist of goats, cows, chickens, oxen, reda (male buffalo), buffalo, and calves. The hamlet employs 38.6% goats and 29.55% cows for various purposes, such as domestic consumption, milk production, dung fertilization, and income generation. In addition, the villagers use a portion of the cows to breed high-quality bulls for agricultural purposes. Hens, oxen, and Reda (buffalo-male) have a significant role as sources of sustenance and revenue for the tribal population, accounting for 16.97%, 4.99%, and a significant amount, respectively. In addition, the research area has buffalo, which account for 3.00% of the livestock population (Table No. 2). We primarily use these buffalo for milk production, as well as their manure for farming activities.

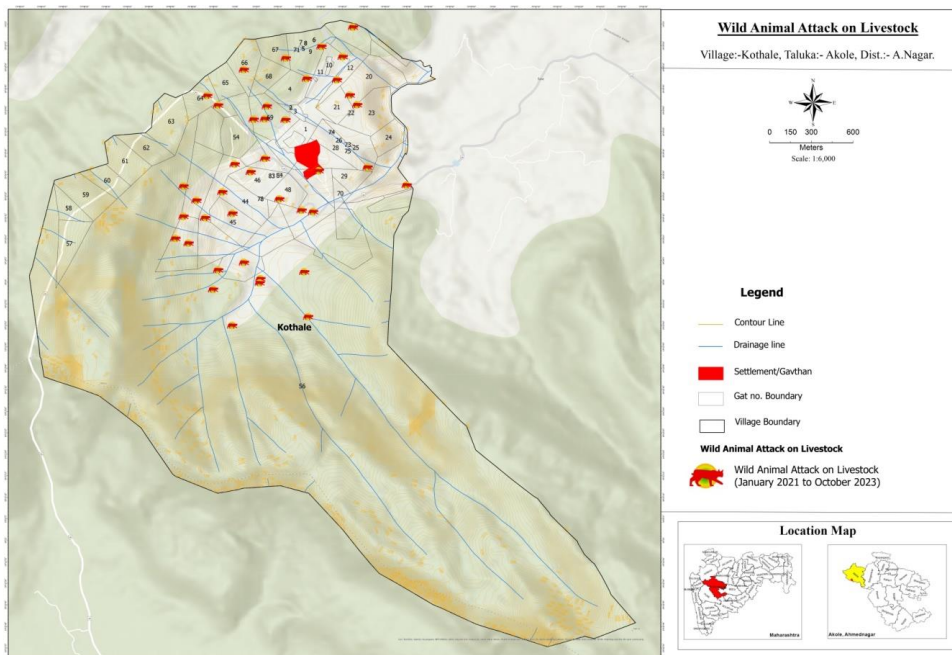
The main purposes for keeping cattle include utilizing dung (31.48%), obtaining milk (27.78%), engaging in agricultural activities (22.84%), generating cash (15.43%), and acquiring meat (2.47%) for household consumption and hospitality. In the village, there are 57 households that own domesticated animals. Of these households, exactly thirty have experienced a total of forty incidents in which wild animals attacked their livestock. The majority of these attacks have occurred in close proximity to the forest (47.5%), inside the cowshed of the residence (20%), during the journey to and from grazing the animals on the road (17.5%), and when the animals are grazing in the fields (15%). Wild animals assaulted livestock during the night (5.00%), during daylight hours (80.00%), and in the early hours of the morning (15%).

Throughout the duration of the study, there were a total of 40 instances where wild animals attacked the cattle, leading to the unfortunate demise of 52 animals and causing injuries to 4 others (Map No. 2). Wild animals exhibit a greater tendency to engage in attacks on other animals in the months of January, August, December, and March. The survey revealed that 30 families experienced a financial loss of approximately Rs. 3,57,500, while 11 families received financial assistance of Rs. 90,500 from the wildlife department.

CROP RAIDING:

Wild animals raiding crops was a serious issue for the farmers in KHWS's Kothale village. The responses from those interviewed indicate that various factors, such as the level of human activity on the farm, the type of crops farmed in relation to the park's location, and the scarcity of food and water for wild animals in the forest, influence the frequency and occurrence of crop raiding (63). Several wild animal species, including Wild boar, Sambar, and Herbivorous Monkeys, are responsible for crop raiding in this area. In the KHWS, the animals responsible for crop damage and the extent of crop damage differ with time and season. Paddy maturing time (July–November) and wheat maturing time (December–April) were two peak seasons for raiding in this region.

Map No: 2 Wild animals attack on Livestock



The research area experienced the highest rainfall during the southwest monsoon season, which also aligned with the planting season in June. Seasonality, crop availability, crop type, and the phenological stage of the crop have a substantial impact on the herbivores' capacity to cause

destruction to crops. They have observed that crop consumers, like wild boars, show a preference for harvested and maturing crops. (64). One observation is that wild boars attack crops at night. An observation revealed that wild boars frequently engage in crop raiding during the rainy season, which spans from June to September. This period coincided with the crops' peak maturity. In the investigated region, 94.59% of families own agricultural land, while 5.41% of households have no agricultural land. Wild animals, such as sambar, wild boar, and monkeys, have damaged 82.86% of farmers' crops, and 17.14% of farmers report that wild animals have not harmed their crops.

The incidence of crop raiding was highest during the post-monsoon season, whereas it was less common during the pre-monsoon and monsoon seasons. Farmers observe crop raids every year and find that rice, gram, wheat, and vegetables are the crops most frequently assaulted. Conflicts generally arise during the nighttime hours, with the highest levels of activity occurring at dusk and dawn. Crop raiding is usually a seasonal phenomenon occurring around the periphery of protected areas (PAs) (65). In a survey, the farmers in the study area expressed their opinions about the Rs 4,10,000 in agricultural financial losses caused by wild animal attacks. The forest department only compensated 3.45% of farmers for the damage to their crops, whereas 96.55% received no compensation at all.

We classify wild animal attacks on crop raiding into two categories: rainy season, winter season, and summer season. Out of the 58 incidents that occurred in the village, 40 took place during the rainy and winter seasons, specifically in locations away from the settlements. During the summer season, all 18 attacks occurred in close proximity to settlements and vital water sources, such as wells and tanks used for seasonal crops (Map No. 3). The most prevalent methods employed by local communities to combat crop raiding include surveillance (eye watching), constructing barriers (fence), pursuing intruders, using unfamiliar scents, and trapping (63). Guarding is the most intensive and successful way for farmers to ensure crop safety from wild animals.

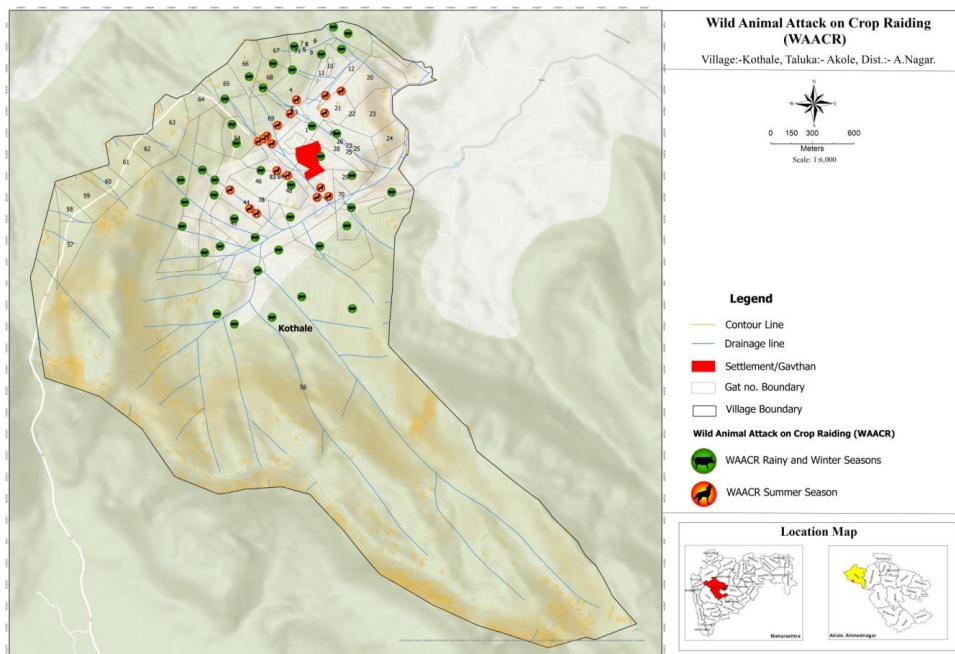
Commented [AM8]: What are the reasons behind this phenomenon, and also provide some regional supporting studies regarding it.

Commented [AM9]: Also include the traditional methods, which are currently used in study area or include your observations regarding it.

ATTACK ON HUMANS:

In the village area, wild animals attacked seven household members. Over the past four years, conflicts with wildlife have resulted in injuries to seven villagers. Leopards, wild boars, bears, and snakes were responsible for most of the injuries in the village catchment area. The frequency of wild boar attacks on farm guards at night has increased, particularly during harvest season and livestock grazing periods near forests and roads. These attacks are a result of human encroachment on wild animal habitats.

Map No: 3 Wild animals attack on Crop raiding



STRATEGIES FOR MITIGATION AND SUGGESTIONS FOR ACTION PLAN:

When there is a possibility of conflict or if it has already occurred, policymakers use safeguarding practices. The ultimate objective of prevention measures is to reduce the problem and minimize its effect on society. We also suggested multiple strategies utilizing geospatial tools to mitigate the human-wildlife conflict (HWC) in the referred-to study area. This action plan was established based on data collected during field visits, GPS technology, the Survey of India

Toposheet, and consultations with many different groups, including villages, forest departments, and cowherds.

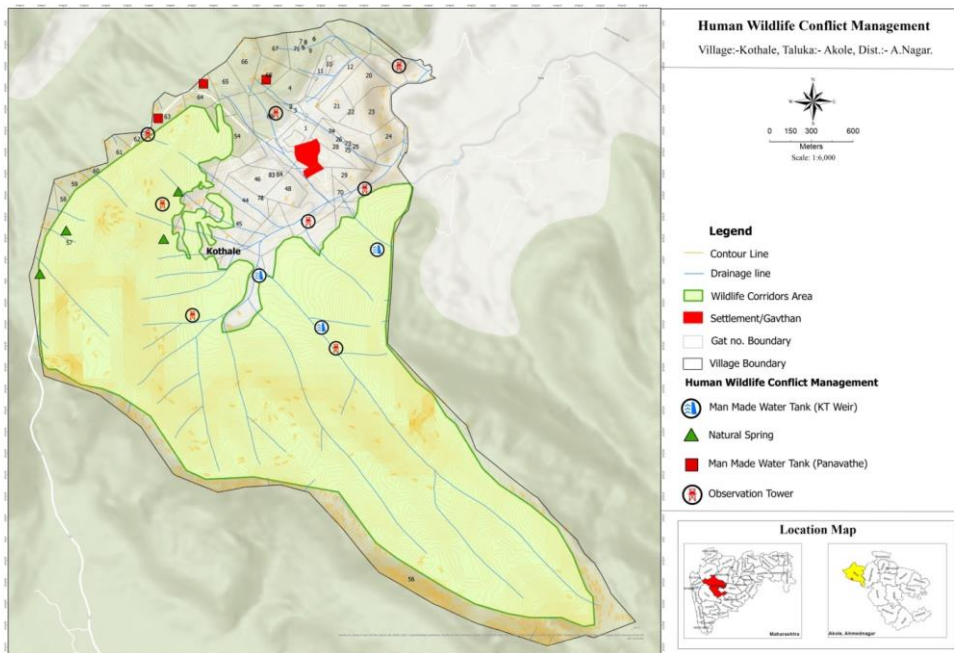
Map no. 4 also indicates the various action plans to reduce the HWC in the study area. The identification of the corridor's geographic region accounted for the presence of accessible wildlife, dense vegetation, and topography. Wildlife corridors, located far from human activities, promote minimal harm to the natural habitat of wild animals. Water is also one of the basic needs of wild animals. Villagers had the opinion that wild fauna frequently ventured into human settlements in pursuit of sustenance and water. Therefore, it is important to identify a suitable site for water sources and construct man-made water tanks, such as the KT Weir (*Kolhapur Type Bandhara*) and *Panavath*. The village region has hilly terrain and abundant rainfall, which accentuates the presence of natural springs as sources of water. One of the significant suggestions was to construct the observation tower in suitable locations to carry out observations of wild animal movements. This action plan is also helpful for the sustainable development of tribal villages, the conservation of natural resources, and reducing the conflict between nature and humans.

4. CONCLUSION:

The current study investigated the impact of human-wildlife conflicts on the local community's economic well-being and wildlife preservation, and it provided recommendations for reducing human-wildlife conflicts in Kothale village, KHWS. The conflict between humans and wildlife regarding habitat and food availability continues to grow due to the expanding human population, its increasing geographical reach, and the resulting decrease in natural ecosystems. The conflict occasionally results in adversity for individuals, including the loss of their livestock, crops, property, and even their lives. Kothale village in the KHWS faces a significant human-wildlife conflict. The research area is located in the Western Ghats, which serve as the natural habitat for wild animals. In this region, humans and wildlife have historically coexisted harmoniously as integral components of the ecosystem. **Nevertheless, as a consequence of human intrusion into the natural forest region, the vast majority of the native wildlife has migrated towards alternate habitats, such as human settlements, in search of sustenance and protection.**

Commented [AM10]: Please provide the source or citation or supporting Data.

Map No: 4 Human Wildlife Conflict Management (Action Plan)



Kothale's local communities are negatively interacting with wildlife, **not only because of their cultural practices,** but also because of their livelihoods. Crop cultivation and livestock are vital for the community's survival and can serve as potential sources of conflict between humans and wildlife. Wildlife has costs for local communities in the form of crop losses, livestock predation, and human attacks. A significant portion of the local community has a favorable attitude towards wildlife conservation. This creates a greater opportunity to reduce the adverse interactions between humans and wildlife by implementing effective ways to prevent and reduce conflicts between both groups. As a result, identifying issues related to human-wildlife conflict and developing an action plan will help reduce conflict in the study area.

Commented [AM11]: Please provide brief information about the which kind of cultural practices is affecting wildlife in study area?

REFERENCES:

Commented [AR12]: Please do arrange all references in APA format, as per journal policy.

1. Human Domination of Earth's Ecosystems. Peter M. Vitousek, Harold A. Mooney, Jane Lubchenco, Jerry M. Melillo. 1997, *Urban Ecology*, pp. 494-499.
2. The Global 200: A Representation Approach to Conserving the Earth's Most Biologically Valuable Ecoregions. Olson, D. M., and E. Dinerstein. 1998, *Conservation Biology* , pp. 502-515.
3. A preliminary inventory of human disturbance of world ecosystems. Hannah, L., D. Lohse, C. Hutchinson, J. L. Carr, and A. Lankerani. 1994, *Ambio*, pp. 246-250.
4. UN. The Global Population Review. New York : The United Nations Population Program,, 2004.
5. Land use Changes and theirImpact on the Sustainability of Wildlife Resources in Mumbwa and Lupande Game Management Areas of Zambia. Inonge Milupi, KaikoMubita, KalistoKalimaposo, KasondeMundende. 2022, *International Journal of Research in Geography (IJRG)*, pp. 1-9.
6. Examining Human Wild Life Conflict in Africa. Ladan, Suleiman Iguda. 2014, *International Conference on Biological, Civil and Environmental Engineering* , pp. 102-105.
7. Benefits beyond boundaries: Proceedings of the Vth IUCN World Parks Congress. IUCN, International Union for the Conservation of Nature. Durban, South Africa : s.n., 2005. Benefits beyond boundaries:. pp. 1-17.
8. Parker G., Osborn F., Hoare R., and Niskanen L.,. Human-Elephant Conflict Mitigation: A Training Course for Community-Based Approaches in Africa. Nairobi : Elephant pepper developemnt trust, Livingstone , Zambia and Nairobi, Kenya, 2007.
9. Human Wildlife Conflict: A Case Study in Kerala,India. Kumar, Padma Mahanti and Sanjeet. 2018, *Journal Of Biodiversity And Conservation*, pp. 42-52.
10. Human - Wildlife Conflicts: Assessing the Causes, Consequences and Management Strategies in Mosi-Oa-Tunya National Park Livingstone in Zambia. Inonge Milupi*, Kaiko Mubita, Kalisto Kalimaposo, Kasonde Mundende, Pauline Namakau Monde, Patrick Sikayomya, Steriah Monica Simooya. 2023, *International Journal of Research in Geography (IJRG)*, pp. 1-7.

11. Compensating human–wildlife conflict in protected area communities: ground-level perspectives from Uttarakhand, India. Ogra, M. and Badola, R. 2008, *Human Ecology*, pp. 717-729.
12. Analysis of Human-Wildlife Conflict in Buffer Zone Area: A Case Study of Shuklaphanta National Park, Nepal. Maheshwari Bhatta, Rajeev Joshi. 2020, *Grassroots Journal of Natural Resources*, pp. 28-45.
13. The growing conflict between humans and wildlife:law and policy as contributing and mitigating factors. Madden, Francine M. 2008, *Journal of International Wildlife Law & Policy* , pp. 189-206.
14. Local ecological knowledge and community based management of wildlife resources: A study of the Mumbwa and Lupande Game Management Areas (GMAs) of Zambia. Milupi, I., Somers, M., & Ferguson, W. 2017, *South African Journal of Environmental Education*, pp. 25-38.
15. Assessment of types of damage andcauses of human wildlife Conflict in Gera district, south western Ethiopia. Amaja, L. G., Feyssa, D.H and Gutema, T. M. 2016, *Journal of Ecology and the Natural Environment*, pp. 49-54.
16. Human-wildlife conflict in Uttarakhand: Impact, opportunities and ground level perspectives with mitigating strategies. D. S. Meena, D. P. Baluni, M. M. Bisht, D. S. Pundir, Akash. 2021, *Proceedings of the International Academy of Ecology and Environmental Sciences*, pp. 84-102.
17. Human Wildlife Conflicts: Causes And Mitigation Measures In Wayanad Wildlife Sanctuary Of Krala. Bijosh M. G., John Abraham and Balusami C. 2022, *Global ScientificJournals*, pp. 621-631.
18. Elephants in Southern Africa: Management issues and options. Cumming, D. and Jones, B. s.l. : WWF – SARPO Occasional Paper Number 11 , 2005, WWF – SARPO Occasional Paper Number 11 , pp. 98-99.
19. Resolving Human-Wildlife Conflicts: The Science of Wildlife Damage Management. Conover, Michael R. 2005, *Lewis Publishers*, pp. 418-419.
20. Human-Wildlife conflict causes, consequences and management strategies. Lamarque, F., Anderson, J., Fergusson, R., Lagrange, M., Osei-Owusu, Y. and Bakker, L. 2009. *FAO Forestry Paper* 157.

21. A. Parasnis, Y. Lele, P. Chourey, and A. Handorein. *Mitigating Human–Animal Conflict*, Terragreen Press. 2014.
22. Approaches to human-wildlife conflict management in and around Chebera-Churchura national park, southern Ethiopia. A. Acha and M. Temesgen. 2015, *Asian Journal of Conservation Biology*, pp. 136-142.
23. Perception and attitude of pastoralists on livestock-wildlife interactions around Awash national park, Ethiopia: implication for biodiversity. Y. Biru, Z. K. Tessema, and M. Urge. 2017, *Conservation Ecological Process*, pp. 1-13.
24. Human-wildlife conflict in and around choffa forests, hawzien woreda, eastern Tigray, orthern Ethiopia. Teshome, T. Girmay and Z. 2015, *Implication for Conservation and Conflict Resolution International Journal of Science and Research*, pp. 1763-1771.
25. Human-wildlife conflict in Choke mountain. B. Nibret, M. Yihune, and B. Takele. 2017, *Ethiopia International Journal of Biodiversity and Conservation*, pp. 1-18.
26. Wildlife damage and control methods around lake Mbuoro national park. M. Tweheyo, D. M. Tumusiime, N. Turyahabwe, A. Asimwe, and L. Orikiran. 2011, *Uganda International Journal of Pest Management*, pp. 25-31.
27. Human-wildlife conflict in Africa: causes, consequences and management strategies (No. 157). Lamarque, F., Anderson, J., Fergusson, R., Lagrange, M., Osei-Owusu, Y., & Bakker, L. 2009, *Food and Agriculture Organization of the*.
28. The Impact Of Human Wildlife Conflict On Acquisition Of Quality Education In Narok West Sub County, Kenya. Jackson Morompi Ole Masago, Dr. Reuben Gibson Kweingoti. 2018, *International Academic Journal of Social Sciences and Education*, pp. 144-157.
29. HMG/N. *Nepal Biodiversity Strategy* Government of Nepal. Ministry of Forest and Soil Conservation (Global Environment Facility). Kathmandu : UNDP, Kathmandu, HMG, Nepal., 2002.
30. *Rural Livelihoods and Diversity in Buffer Zone. A Case Study from Royal Bardia National Park, Nepal.* Silwal, Thakur. 2003.

31. Nepal, S.K. and Weber, K.E. Struggle for existence: park-people conflict in the Royal Chitwan National Park, Nepal. Bangkok, Thailand : Division of Human Settlements Development, Asian Institute of Technology,, 1993.
32. Linking communities with conservation in developing countries:buffer zone management initiatives in Nepal. Budhathoki, Prabhu. 2004, Oryx, pp. 334-341.
33. Rayamajhi, S. Forest dependency, livelihoods and conservation of high altitude forests in Nepal. 2009.
34. Primack, R.B., Paudel, P.K. and Bhattarai, B.P. Conservation biology: A primer for Nepal. Kathmandu, Nepal : Dreamland Publication, 2013.
35. Impact of changing cropping patterns on man-animal conflicts around Gir protected area with specific reference to Talala Sub-District, Gujarat, India. Patil, Vijayan and. 2002, Population and Environment, pp. 541-559.
36. Lion-human conflict in the Gir forest, India. Saberwal V.K., Gibbs, J.P., Chellam, R. and Johnsingh, A.J.T. 1994, Conservation Biology, pp. 501-507.
37. The tools and techniques of wildlife damage management—changing needs: an introduction. W.B., Fall M.W. and Jackson. 2002, International Biodeterioration and Biodegradation, pp. 87-91.
38. Human Wildlife Conflict In India: A Review Of Economic Implication Of Loss And Preventive Measures. Upma Manral, Shruti Sengupta, Syed Ainul Hussain, Sakshi Rana And Ruchi Badola. 2016, Indian Forester, pp. 928-940.
39. Leopards in human – dominated areas: a spillover from sustained translocations into nearby forests? D-103, GMRT Colony, Narayangaon, Pune District, Maharashtra. Athreya, V.R., Thakur, S.S., Chaudhuri, S. and Belsare, A. V. 2007, Journal of the Bombay Natural History Society, , pp. 1-17.
40. Habitat Suitability Area Analysis for Leopard to Mitigate Human-Wildlife Conflict in Junnar Forest Division of Pune Forest Circle. Yogesh P. Badhe, Ravindra G. Jaybhaye. 2021, Applied Ecology and Environmental Sciences, pp. 524-532.

41. Conservation of Africa's cats: problems and opportunities. Myers, N. 1984, *Cats of the World: Biology, Conservation, and Management* . , pp. 437-446.
42. Nowell, K. and Jackson, P. *Wild Cats: Status Survey and Conservation Action Plan*. Gland, Switzerland : IUCN/SSC Cat Specialist Group.IUCN, 1996.
43. The ecology of asociality in Namibian leopards. Stander, P. E., Haden, P. J., Kagece, I. I., and Ghau, I. I. 1997, *Journal of Zoology*,, pp. 343-364.
44. Farmers' perception of leopard (*Panthera pardus*) conservation in a human dominated landscape in northern Ethiopian highlands. Yirga, G., Bauer, H., Worasi, Y. and Asmelash, S. 2011, *International Journal of Biodiversity and Conservation*, pp. 160-166.
45. Kulkarni, J., META, P., and PAL, D. A study of habitat and prey base in forest areas of Bhimashankar Wildlife Sanctuary and Junnar Forest Division to assess the causes of Man-Leopard conflict in inhabited areas of Junnar. s.l. : Report submitted to Maharashtra Forest Department, India., 2004.
46. Predation by leopard *Panthera pardus* in Majhatal Harsang Wildlife Sanctuary, W.Himalayas. Mukherjee, S., and Mishra, C. 2001, *Journal of the Bombay Natural History Society*, pp. 267-268.
47. Leopards living at the edge of the Royal Chitwan National Park, Nepal. In. *Conservation in developing countries: problems and prospects*. Seidensticker, J., Sunquist, M.E. and C.McDougal. 1990, *Bombay Natural History Society and Oxford University Press.*, pp. 415-423.
48. Translocation as a Tool for Mitigating Conflict with Leopards in Human-Dominated Landscapes of India. Vidya Athreya, Morten Odden, John D. C. Linnell, And K. Ullas Karanth. 2010, *Conservation Biology*, pp. 1-9.
49. Changes of the spatial and temporal characteristics of land-use landscape patterns using multi-temporal Landsat satellite data: A case study of Zhoushan Island China. Chen H, Chen C, Zhang Z, Lu C, Wang L, He X, Chu Y, Chen J. 2021, *Ocean & Coastal Management*, pp. 1-15.
50. Mapping and Quantifying Comprehensive Land Degradation Status Using Spatial Multicriteria Evaluation Technique in the Headwaters Area of Upper Blue Nile River. Ewunetu A, Simane B, Teferi E. 2021, *Sustainability* , pp. 1-28.

51. Analysing land use/land cover changes and its dynamics using remote sensing and GIS in Gubalafito district, Northeastern Ethiop. Gebeyehu Abebe, Dodge Getachew, Alelgn Ewunetu. 2021, Nature, pp. 1-15.
52. Assessment of soil erosion hazard and prioritization for treatment at the watershed level: Case study in the Chemoga watershed, Blue Nile basin. . Bewket W, Teferi E. 2009, land degradation & development, pp. 609-622.
53. Dynamics of land-use and land-cover change in tropical regions. Lambin EF, Geist HJ, Lepers E. 2003, Annual Reviews Environment Resource, pp. 205-241.
54. Land use/land cover change along elevation and slope gradient in highlands of Ethiopia. Birhanu L, Tesfaw B, Bekele T, Demissew S. 2019, Remote Sensing Applications: Society and Environment , pp. 1-9.
55. Land-use and land-cover change: local processes and global impacts. . Lambin EF, Geist H. 2006, Printed in Germany: SpringerVerlag Berlin Heidelberg. .
56. Land use and land cover change and implication to watershed degradation by using GIS and and implication to watershed degradation by using GIS and. Sewnet A, Gebeyehu A. 2017, Earth Science Informatics, pp. 99-108.
57. Spatio - temporal Patterns of land use/land cover change in the Bhutan – Bengal foothill region between 1987 and 2019: Study towards geospatial applications and policy making. Chamling M, Bera B. 2020, Earth Systems and Environment, pp. 1-14.
58. Landscape dynamics in a rapidlychanging world. Landscape ecology in theory and practice. Turner M G, Gardner R H. 2015, Springer, Berlin, pp. 333-381.
59. On land-use and land-coverchanges over Lidder valley in changing environment. Rafiq M, Mishra A K, Meer M S. 2018, ANNALS OF GIS, pp. 1-11.
60. Land Use/Land Cover Changes over a District in Northern Indiausing Remote Sensing and GIS and their Impact on Society and using Remote Sensing and GIS and their Impact on Society and. Meer MS, Mishra AK. 2020, JOURNAL GEOLOGICAL SOCIETY OF INDIA, pp. 179-182.

61. and-use change and its socio-environmental impact in Eastern Ethiopia's highland. Meshesha DT, Tsunekawa A, Tsubo M, Ali SA, Haregeweyn N. 2014, Regional Environment Change, pp. 757-768.

62. Examining Human Wild Life Conflict in Africa. Ladan, Suleiman Iguda. Dubai (UAE) : s.n., 2014. International Conference on Biological, Civil and Environmental Engineering. pp. 1-4.

63. Assessment of Human-Wildlife Conflict and the Attitude of Local Assessment of Human-Wildlife Conflict and the Attitude of Local National Park, Ethiopia. Yazezew, Salahadin Merkebu and Dereje. 2021, International Journal of Ecology, pp. 1-8.

64. Seasonality, crop type and crop phenology influence crop damage by wildlife herbivores in Africa and Asia. Eva M. Gross, Bibhuti P. Lahkar, Naresh Subedi, Vincent R. Nyirenda, Laly L. Lichtenfeld & Oliver Jakoby. 2018, Biodiversity and Conservation, pp. 1-21.

65. Elephants in the neighborhood: patterns of crop-raiding by Asian elephants within a fragmented landscape of Eastern India. Dipanjan Naha, Suraj Kumar Dash, Abhisek Chettri, Akashdeep Roy, Sambandam Sathyakumar. 2020, PeerJ. BIODIVERSITY AND CONSERVATION, pp. 1-23.

UNDER PEER REVIEW