

# Impacts of *Calotropis* and *Azadirachta* Green Leaf Manure and Bio Decomposer on Growth and Yield of Lentil

## ABSTRACT

A field experiment was conducted to study the effect of integrated nitrogen management on growth and yield of lentil (*Lens culinaris* Medik.) at Agronomic Research Farm, R. S. M. (P. G.) College, Dhampur (Bijnor) during the Rabi season 2023. The experiment was laid down in a randomized block design having seven treatments i.e. Control, RDN (80% N) + *Calotropis gigantea* green leaf manuring (GLM) (20% N), RDN (80% N) + Neem GLM (20% N), RDN (80% N) + *Calotropis gigantea* GLM (20% N) + waste decomposer soil application (WDSA), RDN (80% N) + Neem GLM (20% N) + WDSA, RDN (80% N) + *Calotropis gigantea* leaf Cutting (20% N) dipped in waste decomposer (WD) solution, RDN (80% N) + Neem leaf Cutting (20% N) dipped in WD solution) and replicated three times. Significant increase in growth characters (plant height and fresh weight), yield contributing character (number of pods) and yields (grain yield and straw yield) was observed with integrated nitrogen management over control. Moreover, among integrated nitrogen management treatments, the integration of RDN (80% N) + Neem leaf Cutting (20% N) dipped in WD solution came out to be best for growth parameters, yield attribute and yield. It is concluded from the experiment that RDN (80% N) + Neem leaf Cutting (20% N) dipped in WD solution is the most effective treatment for enhancing lentil production under Dhampur conditions. Recommendation of this findings would allow Lentil farmers to save money which otherwise would be spent on nitrogenous fertilizer.

**Key words:** Waste Decomposer, *Calotropisgigantea*, Neem leaves, Integrated Nitrogen Management.

## 1. INTRODUCTION

Lentil (*Lens culinaris* Medic.) is one of the oldest annual grain legumes consumed and cultivated in the world. Originating from South Western Asia as early as 6000 B.C. Lentil is rich in proteins and contains high concentrations of essential amino acids like isoleucine and lysine, as well as other nutrients like dietary fiber, folate, vitamin B1, and minerals [1]. Lentil is widely consumed in various parts of the world as loaves, soups, pies, curries etc., especially in vegetarian cultures. It is also an important source of dietary protein in the Mediterranean and South Asian regions. Lentil is a cool season pulse crop and is also relatively tolerant to drought. It is the second most important cool season food legume after chickpea. Being grown for over 8,000 years [2]. The total cultivated area in the world as around 5.58 million hectares producing 5.61 million tonnes of seeds with an average production of 1004.3 kg ha<sup>-1</sup> [3]. The total cultivated area of lentil in India is around 1.45 million hectares which produced a total of 1.45 million tonnes seed yield with a productivity of 1001 kg ha<sup>-1</sup>. In Uttar Pradesh lentil cultivation done on 0.47 million hectare area which produce 0.47 million tonnes seed [4].

Green leaf manures (GLMs) are organic manures made from leaves collected from all available sources and used to supply essential plant nutrients to the soil and increase soil fertility in a healthy manner [5].

Comment [RKN1]: Insert the article a

Comment [RKN2]: I suggest to include the sentence (red fonts)

*Calotropis spp.* grows as a weed in many areas of India, but it is also purposefully planted. The plant's root system has been shown to break up and cultivate cropland. It is useful green leaf manure and will be plowed in before the "real" crop is sown. *Calotropis spp.* GLM improves soils nutrients and moisture binding of soil. According to [6] the cultivation in autumn-winter promoted greater accumulations of green and dry mass in the coriander shoot fertilized with *Calotropis spp.* The best productive performance of coriander was observed with the addition of *Calotropis spp.* to the soil in the amounts of 12.2 t ha<sup>-1</sup> (spring) and 8.8 t ha<sup>-1</sup> (autumn-winter).

Neem leaf manure (NLM) is gaining popularity due to being environmental friendly and could as well increase nitrogen and phosphorus content of the soil [7]. The leaves of the Neem plant used as green fertilizer and the conservation of crops after harvest. The Neem extract increases soil content of nitrogen, phosphorus and sulfur Phosphorus, Calcium and Nitrogen [8].

Decomposer hold promise against issue of residue burning and are available in the form of capsules or gel made by using efficient strains of microbes that accelerate the decomposition of crop residues at a much faster rate than its usual rate[9]. The microbes produce essential enzymes for the degradation process. By considering the importance of lentil and beneficial effect of green leaf manure, waste decomposer etc. the present study was carried out to achieve the following objectives: to study the influence of *Calotropis* and *Azadirachta* green leaf manure and bio decomposer on growth attributes; to assess the influence of *Calotropis* and *Azadirachta* green leaf manure and bio decomposer on yield attributes and yield.

## 2. MATERIAL AND METHODS

### 2.1. Experimental Site, Climatic Condition, Soil Property and Treatment Details

The experiment was conducted at Research Farm of R. S. M. (P.G.) College Dhampur, Bijnor (Uttar Pradesh), India during *Ravi* season (2022–23). The topography of field was uniform with gentle slope. Bijnor is situated in North-Western Plains agro-climatic zone in the Uttar Pradesh at an altitude of 225 m above mean sea level (MSL). It is located in the north-western corner of the Moradabad Division, the districts geographical coordinates span between approximately 29°2' and 29°58' North latitude, and 78°00' and 78°57' East longitude. The District's overall area is subject to minor fluctuations due to the unpredictable shifts of the Ganges and Ramganga rivers. This region enjoys tropical semi-arid type climate with an average annual rainfall of 964 mm, most of which is received during mid-June to middle of September. Bijnor district receives average 100-110 cm rainfall. The major rainfall received during month of June to September. The average temperature ranges between 10°C (during Dec. and Jan.) to 48°C (during May and June).

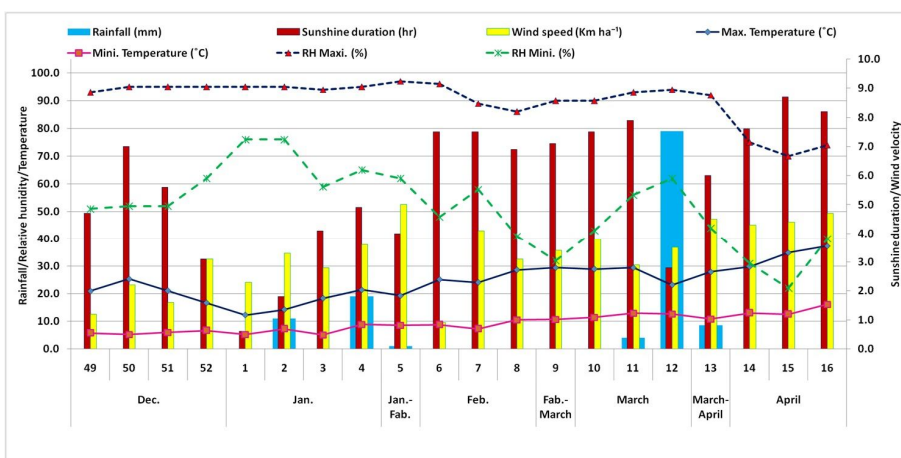


Fig.1 Mean weekly meteorological observation during crop season

The soil was found to be slightly alkaline in reaction (7.26 pH) and relatively low in organic carbon (0.36%). In terms of electrical conductivity, the soil exhibited a value of  $0.26 \text{ dSm}^{-1}$ . On the other hand, the levels of available nutrients were as follows: The soil contained a moderate amount of available nitrogen, with a concentration of  $185.0 \text{ kg ha}^{-1}$ . Additionally, the soil exhibited medium levels of available phosphorus at  $16.8 \text{ kg ha}^{-1}$ , and a similar medium range of available potassium at  $243 \text{ kg ha}^{-1}$  (Table 1).

**Table 1. Physico-chemical properties of the soil of the experimental field**

Mechanical analysis values of soil			
S. No.	Soil separates and textural class	Values (%)	Method of analysis
1.	Sand	22.45%	Hydrometer method [10]
2.	Silt	51.32%	
3.	Clay	21.84%	
4.	Textural class	Silty loam	Triangular method [11]
Chemical analysis values of soil			
S. No.	Particulars	Values	Method of analysis
1.	Soil reaction (pH) (1:2 soil water ratio)	7.26	Glass electrode pH meter[12]
2.	EC ( $\text{dSm}^{-1}$ )	0.26	Electrical conductivity bridge meter[13]
3.	Organic carbon (%)	0.36	Walkley and Black rapid titration method [14]
4.	Available nitrogen ( $\text{kg ha}^{-1}$ )	185.0	Alkaline potassium permagnate method [15]
5.	Available phosphorus ( $\text{kg ha}^{-1}$ )	16.8	Olsen's method [16]
6.	Available potassium ( $\text{kg ha}^{-1}$ )	243.0	Flame emission spectrophotometer [17]

**Table 2 Treatment Details**

S. No.	Treatment	Symbol
1.	Control	T <sub>1</sub>
2.	RDN (80%) + <i>Calotropis gigantea</i> GLM (20%)	T <sub>2</sub>
3.	RDN (80%) + Neem GLM (20%)	T <sub>3</sub>
4.	RDN (80%) + <i>Calotropis</i> GLM (20%) + Waste Decomposer Soil Application	T <sub>4</sub>
5.	RDN (80%) + Neem GLM (20%) + Waste Decomposer Soil Application	T <sub>5</sub>
6.	RDN (80%) + <i>Calotropis gigantea</i> leaf Cutting (20%) dipped in Waste Decomposer solution	T <sub>6</sub>
7.	RDN (80%) + Neem leaf Cutting (20%) dipped in Waste Decomposer solution	T <sub>7</sub>

Note: RDN = Recommended dose of nitrogen, GLM = Green leaf manure, WDSA = Waste decomposer soil application @ 2500 ltr ha<sup>-1</sup>, WDS = Waste decomposer solution

## 2.2 Crop management

The recommended practices for raising crops encompass several essential steps. Preparatory tillage involves initial irrigation, known as "Palewa," administered in the experimental field to achieve optimal moisture conditions for seed germination. This is followed by plowing and cross-harrowing with a tractor-drawn plough and cultivator, respectively, to prepare the field for sowing. Levelling through planking ensures a suitable seed bed. Application of fertilizers like Urea, DAP (Di-ammonium phosphate), and muriate of potash provides essential nutrients at sowing, with a dosage of 20 kg of nitrogen (N), 40 kg of phosphorous pentoxide (P<sub>2</sub>O<sub>5</sub>), and 20 kg of potassium oxide (K<sub>2</sub>O) per hectare (ha). Seed selection and treatment, such as using lentil variety L-4717 and treating seeds with Rhizobium culture @ 20 g kg<sup>-1</sup> of seed, contribute to successful germination. Manual sowing in rows spaced 30 cm apart at a depth of 5 cm is followed by irrigation management using a tube well. Weed control involves the application of pre-emergence herbicide, Pandimethalin @ 1.5 kg ha<sup>-1</sup>, and hand weeding once at 25 days after sowing (DAS). Insect management includes the application of Thiamethoxam @ 100 g ha<sup>-1</sup> for aphid control. Harvesting is done manually with sickles when the stem and pods turn straw color or light brown, and the seed are hard rattle within the pod. Threshing and winnowing follow, separating seeds from pods and debris.

## 2.4 Sampling and observation

In each net plot, five plants were selected randomly and tagged for periodic observations. The height was recorded 20, 40 and 60 DAS in the net plots. It was measured from ground level to the base of the last unfolded leaf at the top of the main stem. The mean plant height of these five tagged plants was computed with the help of a meter scale in cm and used for statistical analysis. The fresh weight of crop was recorded by destructive method. Five plants were selected at random in each plot from border rows for recording fresh weight accumulation at 20, 40 and 60 DAS. Plants were cut from the ground layer, and immediately weighted by using electronic balance in gram (g). After weighing the fresh samples, plants were sun-dried and then dried in the oven at 68°C ± 2°C till constant weight was obtained for recording dry matter accumulation. Dried samples were weighed separately by using electronic balance. Dry matter was measured as g plant<sup>-1</sup>. Pods of 5 plants were selected randomly at maturity from each treatment and counted and average number of pods plant<sup>-1</sup> was calculated.

## 2.5. Statistical Analysis

The data obtained from growth and yield attribute parameters were subjected to analysis of variance (ANOVA) using Statistical Tool for Agricultural Research (STAR) software (version STAR 2.0.1, IRRI, Los Baños, Philippines), while the significance of differences between treatment mean values was determined using the LSD (Least significant difference) test at 5% and 1% levels.

**Comment [RKN3]:** was gthe nitrogen content of calotropis GLM and Neem GLM applied as trteatment analysed. What was the N contents in leaves ?

**Comment [RKN4]:** Please use past tense in activities implemented

**Comment [RKN5]:** ples describe how and from where Neem GLM and Calotropis GLM were obtained.

**Comment [RKN6]:** make it past tense

**Comment [RKN7]:** make it paste tense

**Comment [RKN8]:** make it past tense

**Comment [RKN9]:** put past tense "was"

**Comment [RKN10]:** Insert a

**Comment [RKN11]:** You have missed observation on nodulation counts in root of l;entil and nodule weight as well. Root Nodulation is an important paramemter in legume crops. in t you have those data please incorporate it in thge final manuscript.

**Comment [RKN12]:** Rewrite five plants were randomly selected

### 3. RESULTS AND DISCUSSION

As shown in results lentil growth and yield parameters were significant ( $p \leq 0.05$ ) affected by *Calotropis* and *Azadirachta* green leaf manure and bio decomposer.

#### 3.1 Growth Parameters

Data pertaining to the effect of *Calotropis* and *Azadirachta* green leaf manure and bio decomposer on plant height at 20, 40 and 60 DAS are given in Table 3. The plant height of lentil varied significantly with integrated nitrogen management practices at all the observed stages of crop growth except 20 DAS during the experimentation. The initial growth of lentil crop is slow, so plants were not able to utilize applied inputs effectively, that is the reason behind the no significant response of applied treatment at 20 DAS. At 40 DAS, maximum plant height was recorded under the application of RDN (80%) + Neem GLM (20%) Leaf cutting dipped in WDS ( $T_7$ ) which was significantly superior over rest of the treatments. At 60 DAS, the tallest plant was noted in treatment having RDN (80%) + Neem GLM (20%) Leaf cutting dipped in WDS ( $T_7$ ) which was at par with RDN (80%) + *Calotropis* GLM (20%) Leaf cutting dipped in WDS ( $T_6$ ) but found significantly better to leftover treatments. It might be due to the quick supply of nitrogen through inorganic fertilizers and fast mineralization of neem leaf in the soil by effective microorganism present in the decomposer solution. [18] also conducted a field experiment on black gram and reported that plant height increased significantly with nitrogen applied at the rate of  $30 \text{ kg ha}^{-1}$ .

**Table 3 Influence of *Calotropis* and *Azadirachta* green leaf manure and Bio decomposer on plant height**

Treatment	Plant height (cm)		
	20 DAS	40 DAS	60 DAS
$T_1$ Control	2.5	3.7c	6.4c
$T_2$ RDN (80%) + <i>Calotropis</i> GLM (20%)	3.0	5.0b	8.2b
$T_3$ RDN (80%) + Neem GLM (20%)	3.0	5.2b	8.4b
$T_4$ RDN (80%) + <i>Calotropis</i> GLM (20%) + WDSA	3.2	5.0b	8.4b
$T_5$ RDN (80%) + Neem GLM (20%) + WDSA	3.5	4.8b	8.8b
$T_6$ RDN (80%) + <i>Calotropis</i> GLM (20%) Leaf cutting dipped in WDS	2.8	5.1b	11.1a
$T_7$ RDN (80%) + Neem GLM (20%) Leaf cutting dipped in WDS	3.0	6.5a	11.4a
<b>SEm±</b>	<b>0.2</b>	<b>0.3</b>	<b>0.5</b>
<b>CD (P≤0.05)</b>	<b>NS</b>	<b>1.0</b>	<b>1.5</b>

Note: RDN = Recommended dose of nitrogen, GLM = Green leaf manure, WDSA = Waste decomposer soil application @  $2500 \text{ ltr ha}^{-1}$ , WDS = Waste decomposer solution

Data on fresh weight plant<sup>-1</sup> shown in Table 4 as impacted by different treatments at various growth phases. As the crop grew older, the fresh weight plant<sup>-1</sup> increased continuously until it reached maturity. The data concerning to fresh weight showed significant effect at 20, 40 and 60 DAS stage under *Calotropis* and *Azadirachta* green leaf manure and bio decomposer. At 20 DAS, application of RDN (80%) + Neem GLM (20%) Leaf cutting dipped in WDS ( $T_7$ ) resulted in maximum fresh weight ( $0.07 \text{ g plant}^{-1}$ ) which was statistically equal to rest of the treatment except control ( $T_1$ ). The better response of  $T_7$  might be due to fulfillment of balanced nitrogen requirement of plant at their actively nitrogen consuming phase, the similar result also reported by [19] who noted that nitrogen application @  $30 \text{ kg ha}^{-1}$  increased shoot fresh weight. At 40 DAS, the highest fresh weight plant<sup>-1</sup> was recorded in RDN (80%) + Neem GLM (20%) Leaf cutting dipped in WDS ( $T_7$ ), which was at par with RDN (80%) + *Calotropis* GLM (20%) Leaf cutting dipped in WDS ( $T_6$ ) but found statistically superior to leftover treatment. At 60 DAS, the highest fresh weight plant<sup>-1</sup> was recorded in RDN (80%) + Neem GLM (20%) Leaf cutting dipped in WDS ( $T_7$ ), which was at

par RDN (80%) + *Calotropis* GLM (20%) Leaf cutting dipped in WDS (T<sub>6</sub>) but found statistically superior to other treatment.[20] highlighted the significance of organic inputs in combination with synthetic sources of nutrition in lentil production and concluded that integrated nitrogen management having 20 kg N ha<sup>-1</sup> + FYM @ 5 t ha<sup>-1</sup> significantly increased total plant biomass up to maximum over the individual use of chemical fertilizer or organic source.

Table 4 Influence of *Calotropis* and *Azadirachta* green leaf manure and Bio decomposer on fresh weight

Treatment	Fresh weight (g plant <sup>-1</sup> )		
	20 DAS	40 DAS	60 DAS
T <sub>1</sub> Control	0.05b	0.18c	3.32d
T <sub>2</sub> RDN (80%) + <i>Calotropis</i> GLM (20%)	0.07a	0.21c	3.82cd
T <sub>3</sub> RDN (80%) + Neem GLM (20%)	0.07a	0.21c	3.99bc
T <sub>4</sub> RDN (80%) + <i>Calotropis</i> GLM (20%) + WDSA	0.06a	0.27b	4.39bc
T <sub>5</sub> RDN (80%) + Neem GLM (20%) + WDSA	0.07a	0.28b	4.57b
T <sub>6</sub> RDN (80%) + <i>Calotropis</i> GLM (20%) Leaf cutting dipped in WDS	0.07a	0.32a	5.29a
T <sub>7</sub> RDN (80%) + Neem GLM (20%) Leaf cutting dipped in WDS	0.07a	0.35a	5.66a
<b>SEM±</b>	<b>0.003</b>	<b>0.01</b>	<b>0.21</b>
<b>CD (P≤0.05)</b>	<b>0.01</b>	<b>0.04</b>	<b>0.65</b>

Note: RDN = Recommended dose of nitrogen, GLM = Green leaf manure, WDSA = Waste decomposer soil application @ 2500 ltr ha<sup>-1</sup>, WDS = Waste decomposer solution

**Comment [RKN13]:** What does *Calotropis* GLM 20% mean? does it mean 20% RDN from *Calotropis* and Neem GLM? Please explain it clearly.

**Comment [RKN14]:** 12. Weight of *Calotropis* or Neem GLM required to supply 20% NDN

### 3.2 Yield attributes

The results regarding effect of *Calotropis* and *Azadirachta* green leaf manure and Bio decomposer on number of pods plant<sup>-1</sup> graphically presented in Fig. 2. According to the result, all treatments were found significantly superior over control (T<sub>1</sub>). Among the different treatments, the maximum numbers of pods were observed in RDN (80%) + Neem GLM (20%) Leaf cutting dipped in WDS (T<sub>7</sub>) in followed by RDN (80%) + *Calotropis* GLM (20%) Leaf cutting dipped in WDS (T<sub>6</sub>), RDN (80%) + Neem GLM (20%) + WDSA (T<sub>5</sub>), RDN (80%) + *Calotropis* GLM (20%) + WDSA (T<sub>4</sub>), RDN (80%) + Neem GLM (20%) (T<sub>3</sub>), and RDN (80%) + *Calotropis* GLM (20%) (T<sub>2</sub>), these values were 61.0, 60.3, 58.7, 56.0, 54.3, and 53.0, respectively. The minimum number of pods plant<sup>-1</sup> was recorded in control (51.7).

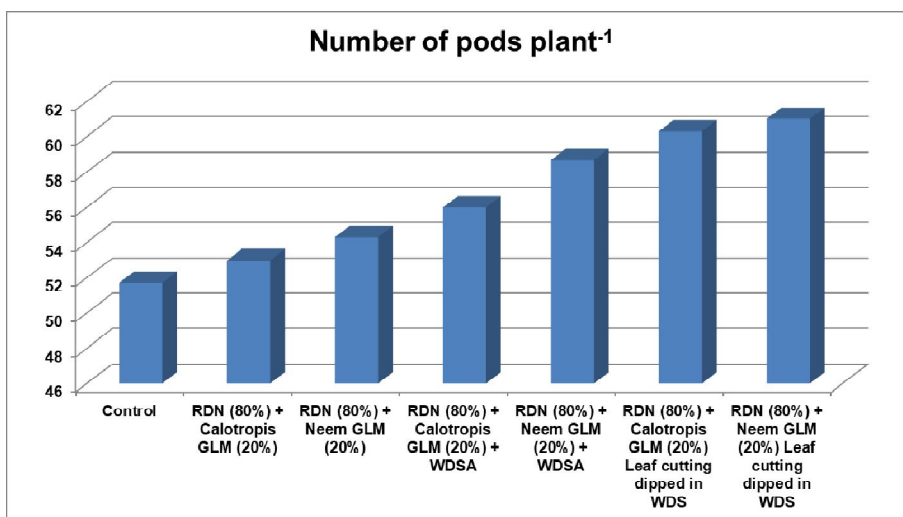


Figure 2 Number of pods as influenced by *Calotropis* and *Azadirachta* green leaf manure and Bio decomposer

### 3.3 Yield

The results regarding impact of *Calotropis* and *Azadirachta* green leaf manure and Bio decomposer on grain yield presented in Table 5. According to the result, all treatments were found significantly superior over control in increasing grain yield.

Among the different treatments, the highest grain yield observed under the application of RDN (80%) + Neem GLM (20%) Leaf cutting dipped in WDS (T<sub>7</sub>) (14.29 q) which was statistically superior to remaining treatments except the application of RDN (80%) + *Calotropis* GLM (20%) Leaf cutting dipped in WDS (T<sub>6</sub>) (13.68 q). Furthermore, RDN (80%) + Neem GLM (20%) + WDSA (T<sub>5</sub>) (12.33 q), RDN (80%) + *Calotropis* GLM (20%) + WDSA (T<sub>4</sub>) (12.26 q), RDN (80%) + Neem GLM (20%) (T<sub>3</sub>) (11.17 q), and RDN (80%) + *Calotropis* GLM (20%) (T<sub>2</sub>) (10.17 q) produced substantially higher grain yield than control (T<sub>1</sub>) (9.32 q). The minimum grain yield was recorded in control.

Table 5 Influence of *Calotropis* and *Azadirachta* green leaf manure and Bio decomposer on grain yield

Treatment	Yield (q ha <sup>-1</sup> )
T <sub>1</sub> Control	9.32d
T <sub>2</sub> RDN (80%) + <i>Calotropis</i> GLM (20%)	10.17d
T <sub>3</sub> RDN (80%) + Neem GLM (20%)	11.17c
T <sub>4</sub> RDN (80%) + <i>Calotropis</i> GLM (20%) + WDSA	12.26b
T <sub>5</sub> RDN (80%) + Neem GLM (20%) + WDSA	12.33b
T <sub>6</sub> RDN (80%) + <i>Calotropis</i> GLM (20%) Leaf cutting dipped in WDS	13.68a
T <sub>7</sub> RDN (80%) + Neem GLM (20%) Leaf cutting dipped in WDS	14.29a
<b>SEm±</b>	<b>0.31</b>
<b>CD (P≤0.05)</b>	<b>0.97</b>

Note: RDN = Recommended dose of nitrogen, GLM = Green leaf manure, WDSA = Waste decomposer soil application @ 2500 ltr ha<sup>-1</sup>, WDS = Waste decomposer solution

The results regarding impact of *Calotropis* and *Azadirachta* green leaf manure and Bio decomposer on straw yield presented in Table 6. According to the experimental findings, all treatments were found significantly superior over control in increasing grain yield. Among the different treatments, the highest straw yield observed under the application of RDN (80%) + Neem GLM (20%) Leaf cutting dipped in WDS (T<sub>7</sub>) (18.5 q ha<sup>-1</sup>) which was significantly at par with RDN (80%) + *Calotropis* GLM (20%) Leaf cutting dipped in WDS (T<sub>6</sub>) (17.6 q ha<sup>-1</sup>). Furthermore, the application of, RDN (80%) + Neem GLM (20%) + WDSA (T<sub>5</sub>) (16.60 q ha<sup>-1</sup>), RDN (80%) + *Calotropis* GLM (20%) + WDSA (T<sub>4</sub>) (15.70 q ha<sup>-1</sup>), RDN (80%) + Neem GLM (20%) (T<sub>3</sub>) (15.1 q ha<sup>-1</sup>), and RDN (80%) + *Calotropis* GLM (20%) (T<sub>2</sub>) (14.4 q ha<sup>-1</sup>) produced substantially higher straw yield than control (T<sub>1</sub>) (12.8 q ha<sup>-1</sup>).

The similar result also recorded by Aggarwal and Ram (2011) that proved the significance of integrated use of organic and inorganic fertilizers towards improvement in the yield attributing character and yield of lentil. They advocated enhanced pods (46.3 plant<sup>-1</sup>) and biological yield (2876 kg ha<sup>-1</sup>) with application of FYM @ 15 t ha<sup>-1</sup> + RDN (12.5 kg N ha<sup>-1</sup>). [22] also reported that starter N applied at a rate of 15 kg ha<sup>-1</sup> increased seed yield of lentil by 13%. [23] also reported that 20 kg N ha<sup>-1</sup> significantly improved number of pods plant<sup>-1</sup>, number of seeds pod<sup>-1</sup> and 1000-seed weight of lentil.

**Table 6 Influence of *Calotropis* and *Azadirachta* green leaf manure and Bio decomposer on straw yield**

Treatment	Straw yield (q ha <sup>-1</sup> )
T <sub>1</sub> Control	12.8e
T <sub>2</sub> RDN (80%) + <i>Calotropis</i> GLM (20%)	14.4d
T <sub>3</sub> RDN (80%) + Neem GLM (20%)	15.1d
T <sub>4</sub> RDN (80%) + <i>Calotropis</i> GLM (20%) + WDSA	15.7cd
T <sub>5</sub> RDN (80%) + Neem GLM (20%) + WDSA	16.6bc
T <sub>6</sub> RDN (80%) + <i>Calotropis</i> GLM (20%) Leaf cutting dipped in WDS	17.6ab
T <sub>7</sub> RDN (80%) + Neem GLM (20%) Leaf cutting dipped in WDS	18.5a
<b>SEm±</b>	<b>0.5</b>
<b>CD (P≤0.05)</b>	<b>1.5</b>

Note: RDN = Recommended dose of nitrogen, GLM = Green leaf manure, WDSA = Waste decomposer soil application @ 2500 ltr ha<sup>-1</sup>, WDS = Waste decomposer solution

#### 4. CONCLUSION

Plant height, fresh weight, yield and yield characters were recorded highest in application of RDN (80%) + Neem GLM (20%) Leaf cutting dipped in WDS. On the basis of **all the finding**, it is concluded that the application of RDN (80%) + Neem GLM (20%) Leaf cutting dipped in WDS found most profitable as compared to other treatments under Dhampur, Bijnor (Uttar Pradesh) condition.

#### References

1. Rozan, P.; Kuo, Y.-H.; Lambein, F. Amino acids in seeds and seedlings of the genus *Lens*. *Phytochemistry* **2001**, *58*, 281–289, doi:10.1016/S0031-9422(01)00200-X.
2. Dhuppar, P.; Biyan, S.; Chintapalli, B.; Rao, S. Lentil crop production in the context of climate change. *Indian Res. J. Exten. Edu* **2012**, 33–35.
3. FAOSTAT Crops and livestock products Available online: <https://www.fao.org/faostat/en/#data/QCL> (accessed on Mar 29, 2023).
4. DAC&FW *Agricultural statistics at a glance*; 2021;
5. Raza, S. Green leaf manure – A useful organic manure Available online: <https://www.permaculturenews.org/2016/02/25/green-leaf-manure-a-useful-organic->

Comment [RKN15]: Repalce all the finding with "on the basis of results"

Comment [RKN16]: Rearrange refernces by alphabetical order.

- manure/ (accessed on Mar 28, 2023).
6. Souza, É.G.F.; Souza, A.R.E. de; Soares, E.B.; Barros Júnior, A.P.; Silveira, L.M. da; Bezerra Neto, F. Green manuring with *Calotropis procera* for the production of coriander in two growing seasons. *Ciência e Agrotecnologia***2017**, *41*, 533–542, doi:10.1590/1413-70542017415013417.
  7. Oyekunle, O.J.; Abosede, O.T. Growth, yield and nutritional compositions of fluted pumpkin (*Telfairia occidentalis*) as affected by fertilizer types on Ogbomoso, South West Nigeria. *Bull. Environ. Pharmacol. Life Sci.***2012**, *1*, 81–88.
  8. Lokanadhan, S.; Muthukrishnam, P.; Jeyaraman, S. Neem products and their agricultural applications. *J. Biopestic.***2012**, *5*, 72–76.
  9. Aakash; Singh, M.K.; Saikia, N.; Bhayal, L.; Bhayal, D. Effect of integrated nutrient management on growth, yield attributes and yield of green pea in humid subtropical climate of indo-gangetic plains. *Ann. Agric. Sci.***2023**, *44*, 190–196.
  10. Bouyoucos, G.J. Hydrometer Method Improved for Making Particle Size Analyses of Soils 1. *Agron. J.***1962**, *54*, 464–465, doi:10.2134/agronj1962.00021962005400050028x.
  11. Lyon, T.; Buckman, H.; Brady, N. The nature and properties of soil. *Macmillan Co.***1952**, *5*.
  12. Jackson, M.L. Soil chemical analysis. *Prentice-Hall India Pvt. Ltd., New Delhi***1967**, 498.
  13. Richard, L.A.E. Diagnosis and improvement of saline and alkaline soil. *U.S.D.A. Washingt. Hand B. No.***1954**.
  14. Walkley, A.; Black, I.A. An examination of the degtjareff method for determining soil organic matter, and a proposed modification of the chromic acid titration method. *Soil Sci.***1934**, *37*, 29–38, doi:10.1097/00010694-193401000-000.
  15. Subbiah, B.V.; Asija, G.L. A rapid procedure for the estimation of available nitrogen in soils. *Curr. Sci.***1956**, *25*, 259–260.
  16. Olsen, S.R.; Cole, C. V; Watandbe, F.; Dean, L. Estimation of available phosphorus in soil by extraction with sodium bicarbonate. *J. Chem. Inf. Model.***1954**, *53*, 1689–1699.
  17. Jackson, M.L. Soil Chemical Analysis. *Prentice Hall India Priv. Limited, New Delhi***1973**.
  18. Hussain, N.; Mehdi, M.; Kant, R.H. Response of nitrogen and phosphorus on growth and yield attributes of black gram (*Vigna mungo*). *Res. J. Agric. Sci.***2011**, *2*, 334–336.
  19. Muhammad, S.; Mansoor, A.; Gulwarin, K.; Abdur, R.; Fakhar ul, I.; Askar, A.; Talha, K.; Muhammad, L.; Haseef, A.; Muhammad, A.; et al. Performance of lentil varieties to the application of nitrogen levels and nitrogen fixing bacteria. *J. Xi'an Shiyou Univ. Nat. Sci. Ed.***2023**, *19*, 1309–1322.
  20. Chouhan, R. Effect of organic, inorganic manure and bio-fertilizer on growth, yield attributes and yield of lentil (*Lens culinaris Medik*) under rainfed condition., 2011.
  21. Aggarwal, N.; Ram, H. Effect of nutrients and weed management on productivity of lentil (*Lens culinaris L.*). *J. Crop Weed***2011**, *7*, 191–194.
  22. Dekhane, S.S.; Khafi, H.R.; Raj, A.D.; Parmar, R.M. Effect of bio fertilizer and fertility levels on yield, protein content and nutrient uptake of cowpea (*Vigna unguiculata L.*). *Legum. Res.***2012**, *34*, 51–54.
  23. Jan, A.; Nawabzada Performance of lentil varieties at different levels of nitrogen and phosphorus under rainfed conditions. *Sarhad J. Agric.***2004**, *20*, 355–358.