

Screening of tomato germplasm lines against major diseases under naturally ventilated polyhouse

ABSTRACT:

AIMS: Screening of tomato germplasm lines against major diseases under naturally ventilated polyhouse.

Place and Duration of Study: The experiment was conducted during *rabi* 2020-2021 under naturally ventilated poly house, which located at Center of Excellence, Dr. Y.S.R. Horticultural University, Venkataramannagudem.

Methodology: Total 21 tomato genotypes which included 18 germplasm lines and 3 commercial cultivars as a check (Arka vikas, Polyana and BSS 1006) collected from the HRS, Venkataramannagudem which were screened against major diseases of tomato under naturally ventilated polyhouse and to find out resistance source.

Results: Screening results revealed that out of 21 genotypes screened, total eight lines, namely VRSL-36, VRSL-45, VRSL-104, VRSL-114, VRSL-134, VRSL-182, VRSL-224 and VRSL-164 were grouped under moderately resistant reaction to ToLCV disease. Among 18 lines only two lines, namely VRSL-40 and VRSL-134 were grouped under highly resistant reaction to fusarium wilt disease under naturally ventilated polyhouse conditions.

*VRSL- Venkataramannagudem *Solanum lycopersicum*

Key words: Germplasm lines, Tomato leaf curl virus, fusarium wilt, VRSL.

INTRODUCTION:

Tomato (*Solanum lycopersicum* L.) is one of the most popular vegetable crop in the world, shares a coveted position in India. It is one of the important food and cash crop for many low-income farmers in the tropical countries so also regarded as poor man's apple. Among the vegetable crops tomato ranks the second position in world and rank first among the processing crops. It is a native of tropical America and is cultivated in about 130 different countries. Brazil, China, Cuba, Egypt, Indonesia, Russia, Spain *etc.*, are the leading producers of tomato.

Tomato is one of the versatile vegetable with wide usage in Indian culinary tradition. It is used as a fresh vegetable and also variety of processed products such as juice, ketchup, sauce, canned fruits, puree, paste, *etc.* Tomato is rich source of vitamins and minerals mainly rich in vitamin C. It is a good source of "lycopene" pigment which is largely responsible for the red colour of fruit.

The major limiting factors towards production of optimum yield are considerable biotic stresses caused by fungi, bacteria, viruses, viroids, nematodes and insect-pests in existing varieties and hybrids.

Commented [A1]: Begin with a brief introduction, followed by background information, problem statement, objectives, methodology, results then discussion and conclusion.

Commented [A2]: Avoid inserting sub topics in abstract.

Commented [A3]: Write in a continuous prose

Commented [A4]: Since you are using this synonyms for the first time introduce full word the put this in brackets.

Commented [A5]: Tomatoes are not popular vegetable unless be supported by a citation

Commented [A6]: Specify juice

Under protected cultivation of tomato is seriously impaired due to increasing infections of early blight (*Alternaria solani*), Fusarium wilt and tomato leaf curl virus (ToLCV) diseases.

Vegetable production in our country is significantly influenced by the seasonality and weather conditions. Extends of abundance and deficiency in production and availability cause fluctuations in the prices and quality of vegetables. Considering economic importance of the tomato under protected conditions the present investigation was carried out to find the resistance tomato germplasm lines against major diseases under naturally ventilated poly house.

Commented [A7]: Beef up the introduction

2. MATERIALS AND METHODS

A total of 18 tomato germplasm lines were collected from the HRS, Venkataramannagudem and screened against major diseases under naturally ventilated polyhouse. Disease infection was recorded on 18 germplasm lines using standard disease rating scales of respective diseases. Arka vikas, Polyana and BSS1006 were used as a susceptible cheks.

Commented [A8]: Methods used to determine resistance of tomato genotypes are not clearly demonstrated to measure their incidences

Commented [A9]: Paraphrase this statement

Table 1. Tomato germplasm lines

1	VRSL 18	7	VRSL 42	13	VRSL 180
2	VRSL 24	8	VRSL 45	14	VRSL 182
3	VRSL 28	9	VRSL 104	15	VRSL 223
4	VRSL 36	10	VRSL 106	16	VRSL 224
5	VRSL38	11	VRSL 114	17	VRSL 41
6	VRSL40	12	VRSL 134	18	VRSL 164

3.7.1 The details of the screening of tomato germplasm lines were as follows.

Crop : Tomato
 Location : Centre of Excellence, Venkataramannagudem.
 Number of Germplasm : 18
 Spacing : 50x40cm
 Checks : Arka vikas. Polyana, BSS 1006.
 Season : Rabi

Commented [A10]: Replace with winter which is an English word

Table 2. Disease rating scale employed for scoring the fusarium wilt disease of tomato genotypes. (Sallam *et al.* 2013)

Per cent disease incidence	Reaction group	Symbol
0 %	<u>Immune</u>	(I)
0.1-10 %	Highly resistant	(HR)
10.1-30 %	Moderately Resistant	(MR)
30.1-50 %	Moderately susceptible	(MS)
50.1-70 %	Susceptible	(S)
70.1-100 %	Highly susceptible	(HS)

Commented [A11]: Replace with tolerant

Table 3. Disease rating scale employed for scoring the tomato leaf curl virus disease of tomato genotypes. (Singh *et al.* 2014)

Per cent disease incidence	Reaction group	Symbol
0	Immune	(I)
0.1-5 %	resistant	(R)
5.1-10 %	Moderately Resistant	(MR)

10.1-25 %	Moderately susceptible	(MS)
25.1-50 %	Susceptible	(S)
50.1-100 %	Highly susceptible	(HS)



Plate 1. Field view of screening of tomato germplasm lines against major diseases of tomato under naturally ventilated poly house conditions.

3. RESULT AND DISCUSSION:

The experiment was conducted during *rabi* 2021 under naturally ventilated poly house, which located at Center of Excellence, Dr. Y.S.R. Horticultural University, Venkataramannagudem. Total 21 tomato genotypes which included 18 germplasm lines and 3 commercial cultivars as a check (Arka vikas, Polyana and BSS 1006) collected from the HRS, Venkataramannagudem which were screened against major diseases of tomato under naturally ventilated polyhouse (Table 1). Disease infection was recorded on 21 genotypes at weekly interval. It was recorded from 1st week of September to 2nd week of February. A total two diseases (1 fungal and 1 viral) viz., Fusarium wilt of tomato (*Fusarium solani*), and tomato leaf curl virus were appeared during the course of investigation.

Commented [A12]: delete

3.1. Toamto leaf curl virus:

Based on the reaction of each genotype they were grouped in to different categories for tomato leaf curl virus disease viz., immune (I), resistant (R), moderately resistant (MR), moderately susceptible (MS), susceptible (S), and highly susceptible (HS) singh (2014) Table 3). Among the 21 genotypes screened lowest per cent disease incidence was recorded in VRSL -114 (5.88 %), VRSL-134 (6.54 %) and VRSL-136 (6.86 %). Highest per cent disease incidence was recorded in Arka vikas (17.87 %) (Table 4 and Fig 1).

Screening results revealed that out of 21 genotypes screened, all genotypes grouped under moderately resistant (MR) and moderately susceptible (MS) only. None of them grouped under immune (I), resistant (R), susceptible (S) and highly susceptible (HS) categories. Total eight lines, namely VRSL-36, VRSL-45, VRSL-104, VRSL-114, VRSL-134, VRSL-182, VRSL-224 and VRSL-164 were grouped under moderately resistant and remaining all genotypes were categorised under moderately susceptible reaction to ToLCV disease (Table 3). Genotypes were grouped based on their response to tomato leaf curl virus disease in naturally ventilated poly house (Table 6).

Many authors were reported the tomato leaf curl viruse are the major limiting factors affecting health and yield of tomato during field, and poly house conditions (Hossain *et al.* 2015; Moriones *et al.* 2017; Tamilnayagan *et al.* 2017; Ullah *et al.* 2017). Moreover, the prevalence of insect vector efficiently transmits viruses and severely affects the production system (Lepidot, 2007). The resistant genotypes were found to act as natural barrier and disfavor virus incidence. (Friedmann *et al.* 1998; Ray *et al.* 2017).

3.2 Fusarium wilt:

Among the 21 genotypes screened lowest per cent disease incidence was recorded in VRSL -40 and VRSL-134 (9.79 %). Highest per cent disease incidence was recorded in A.vikas (32.28 %) (Table 4 and Fig 2). Based on the reaction of each genotype they were grouped in to different categories for fusarium wilt disease viz., immune (I), highly resistant (HR), moderately resistant (MR), moderately susceptible (MS), susceptible (S), and highly susceptible (HS) (Table 2). Results showed that total 21 genotypes screened, all genotypes grouped under highly resistant (HR) and moderately resistant (MR) only. None of them grouped under immune (I), moderate susceptible (MS), susceptible (S) and highly susceptible (HS) categories.

Among 18 lines only two lines, namely VRSL-40 and VRSL-134 were grouped under highly resistant and 18 genotypes, VRSL-18, VRSL-24, VRSL-28, VRSL-36, VRSL-38, VRSL-41, VRSL-42, VRSL-45, VRSL- 104, VRSL- 106, VRSL- 114, VRSL- 123, VRSL- 124, VRSL- 164, VRSL- 180, VRSL- 182, Polyana and BSS-1006 were categorised under moderately resistant and Arka vikas grouped under moderate susceptible (MS) reaction to fusarium wilt disease. (Table 4). Genotypes were grouped based on their response to fusarium wilt disease in naturally ventilated poly house (Table 5).

Intensive cultivation of a single crop in poly houses led to the emergence of soil-borne plant diseases. In some areas this situation was resulted in huge economic losses to the growers. Fusarium wilt

Commented [A13]: This term is only used in animals but not in plants .

was a serious disease of tomato especially in warmer conditions because the pathogen requires a soil temperature around 28° C for its growth and development (Gupta and Thind, 2006). It was observed that temperature favours the development of fusarium wilt in ranged from 25-33° C. These findings were agreement with early findings of Bawa, 2016 and Debbi *et al.* 2018.

UNDER PEER REVIEW

Table 4 Screening of tomato germplasm lines against major diseases of tomato under naturally ventilated polyhouse.

Germplasm lines	% Disease Incidence			
	% Disease Incidence			
	Fusarium wilt	Disease Reaction	Tomato Leaf curl virus	Disease Reaction
VRSL 18	21.96	MR	14.38	MS
VRSL 24	21.43	MR	10.13	MS
VRSL 28	19.05	MR	10.46	MS
VRSL 36	22.22	MR	6.86	MR
VRSL 38	19.05	MR	14.38	MS
VRSL 40	9.79	HR	11.11	MS
VRSL 42	20.11	MR	13.73	MS
VRSL 45	17.2	MR	8.5	MR
VRSL 104	18.78	MR	9.8	MR
VRSL 106	20.37	MR	12.75	MS
VRSL 114	21.16	MR	5.88	MR
VRSL 134	9.79	HR	6.54	MR
VRSL 180	19.31	MR	15.03	MS
VRSL 182	16.67	MR	7.19	MR
VRSL 223	14.29	MR	11.76	MS
VRSL 224	18.78	MR	9.15	MR
VRSL 41	19.31	MR	12.09	MS
VRSL 164	21.16	MR	7.19	MR
Arka vikas	32.28	MS	17.97	MS
Polyana	26.85	MR	13.73	MS
BSS 1006	24.87	MR	12.09	MS

* HR=highly resistant MR= moderately resistant MS= moderately susceptible

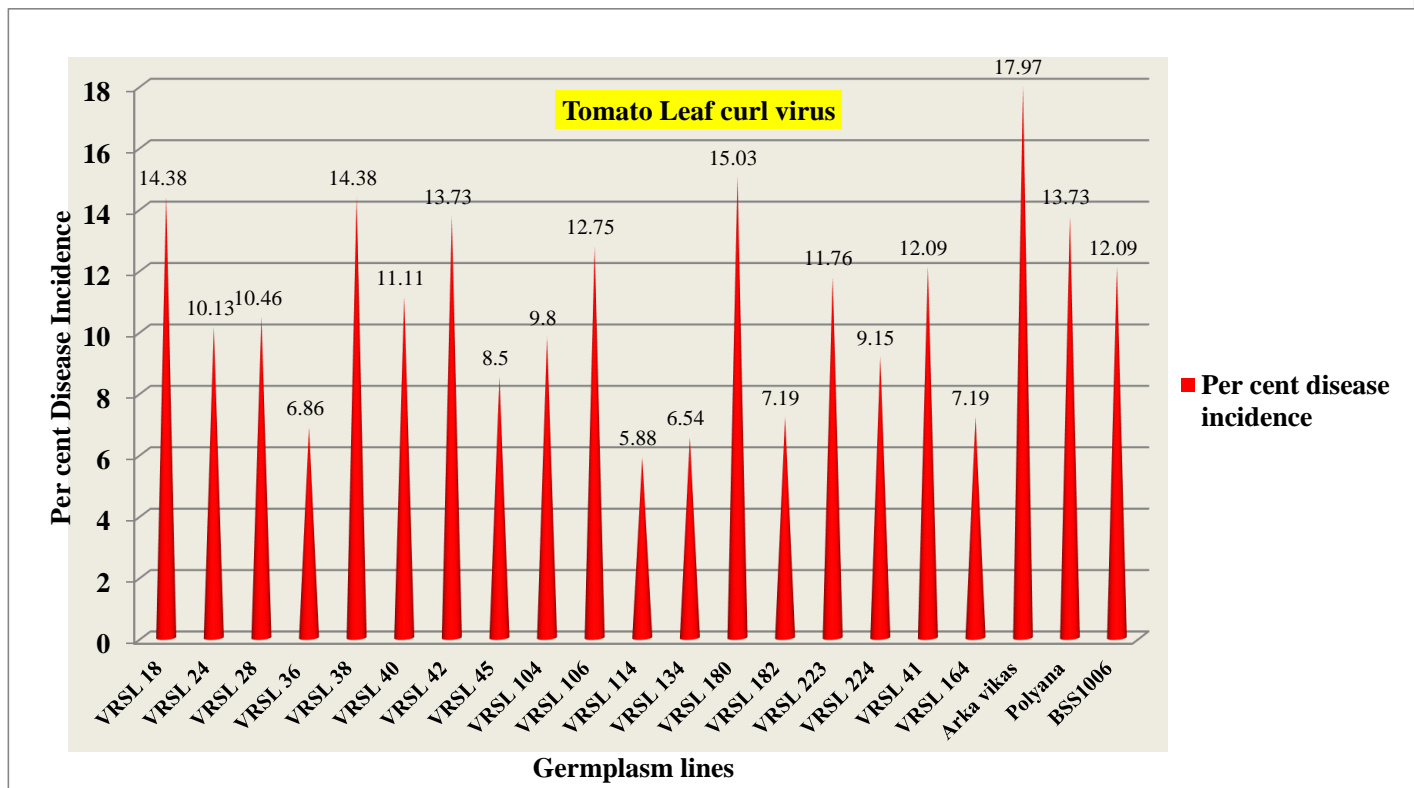


Figure 1 Screening of tomato germplasm lines against tomato leaf curl virus disease

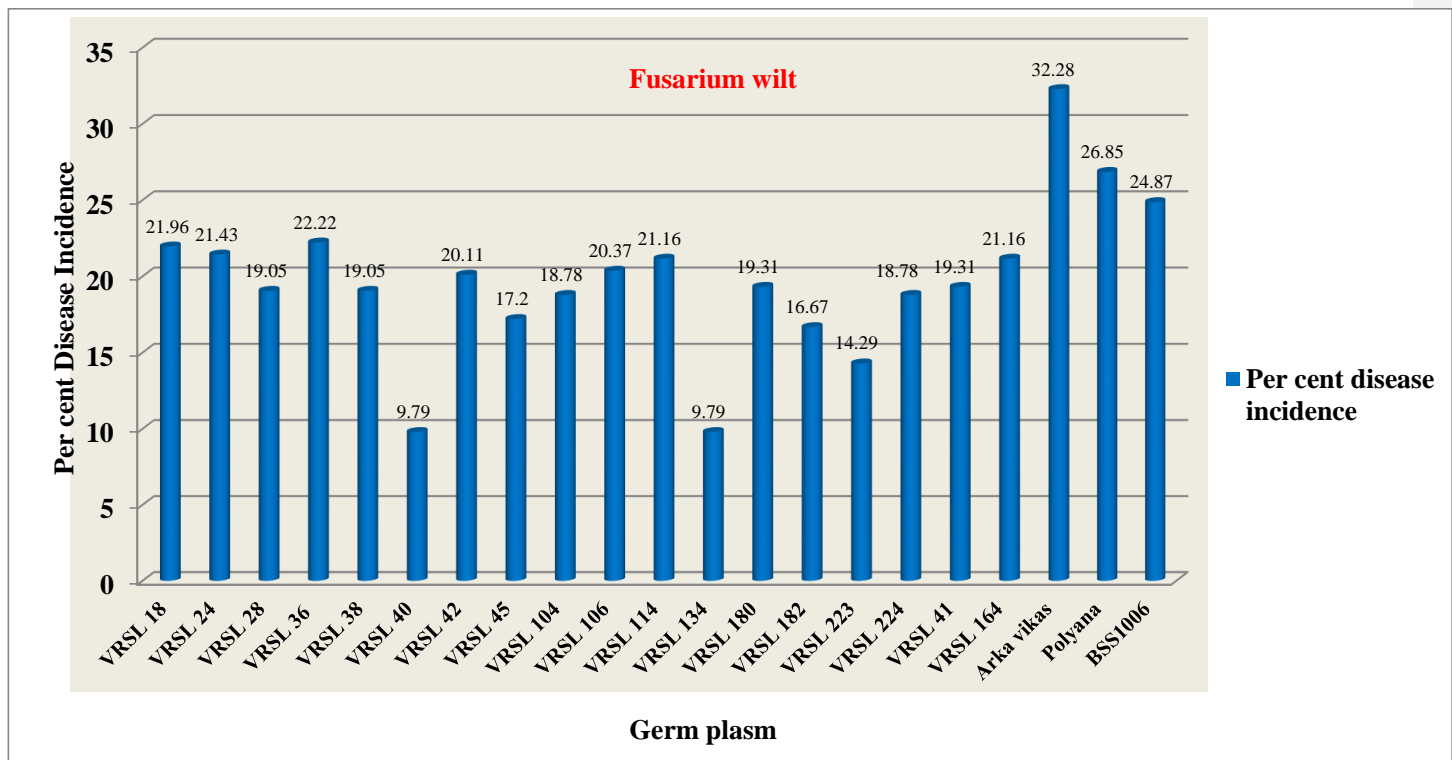


Figure 2. Screening of tomato germplasm lines against fusarium wilt disease.

Table 5. Grouping of various tomato genotypes into different categories on the basis of their response to fusarium wilt disease.

Reaction category	Per cent disease incidence	Genotype
Immune (I)	0	-
Highly resistant (HR)	1-10	VRSL -40, VRSL -134
Moderately Resistant (MR)	11-30	VRSL -18,VRSL -24, VRSL -28, VRSL -36, VRSL -38, VRSL -41, VRSL -42, VRSL -45, VRSL -104, VRSL -106, VRSL -114, VRSL -123, VRSL -124, VRSL -164, VRSL -180, VRSL -182, Polyana and BSS1006.
Moderately susceptible (MS)	31-50	Arka vikas
Susceptible (S)	51-70	-
Highly susceptible (HS)	71-100	-

Table 6. Grouping of various tomato genotypes into different categories on the basis of their response to tomato leaf curl virus disease.

Reaction category	Per cent disease incidence	Genotype
Immune (I)	0	-
resistant (R)	0.1-5 %	-
Moderately Resistant (MR)	5-10 %	VRSL-36, VRSL-45, VRSL-104, VRSL-114, VRSL-134, VRSL-182, VRSL-224 and VRSL-164
Moderately susceptible (MS)	10-25 %	VRSL -18,VRSL -24, VRSL -28, , VRSL -38, VRSL -40 VRSL -42, VRSL -106, VRSL -180, VRSL -223, VRSL -41, Arka vikas, polyana and BSS-1006.
Susceptible (S)	25-50 %	-
Highly susceptible (HS)	50-100 %	-

Conclusion:

Present study was concluded that out of 21 genotypes screened, total eight lines, namely VRSL -36, VRSL-45, VRSL-104, VRSL-114, VRSL-134, VRSL-182, VRSL-224 and VRSL-164 were grouped under moderately resistant and remaining all genotypes were categorized under moderately susceptible reaction to ToLCV disease. Among 18 lines only two lines, namely VRSL-40 and VRSL-134 were grouped under highly resistant. These resistant lines/varieties can further be exploited in tomato breeding programmes i.e., these can directly be released as commercial cultivars and otherwise these can be used as source resistant parents in various crosses to transfer their resistance against ToMV.

Commented [A14]: Paraphrase, genetic materials

References:

- Bawa, I. 2016. Management strategies of Fusarium wilt disease of tomato incited by *Fusarium oxysporum* f. sp. *lycopersici* (Sacc.) *International Journal Advanced academic research*. 2(5): 1-5.
- Debbi, A, Bouregghda, H, Monte, E. and Hermosa, R. 2018. Distribution and genetic variability of *Fusarium oxysporum* associated with tomato diseases in Algeria and a biocontrol strategy with indigenous *Trichoderma* spp. *Frontiers in Microbiology*. 9(282): 1-11.
- Friedmann, M, Lapidot, M, Cohen, S. and Pilowsky, M. 1998. A novel source of resistance to tomato yellow leaf curl virus exhibiting a symptomless reaction to viral infection. *Journal of American Society and Horticulture Sciences*. 123 (6) 1004-1007.
- Gupta, S.K. and Thind, T.S. 2006. Disease problems in vegetable production. *Scientific Publisher, Jodhpur*. 576.
- Hossain, M.F, Akanda, A.M, Hossain, M.M. and Ahmed, J.U. 2015. Screening of tomato genotypes against tomato purple vein virus. *Annals of Bangladesh Agriculture*. 21 (1 & 2): 89-97.
- Lepidot, M. 2007. Screening for TYLCV Resistance Plants using Whitefly-Mediated Inoculation. In: Czosnek H. (eds) *Tomato Yellow Leaf Curl Virus Disease*. Springer, Dordrecht. 329-342.
- Moriones, E, Praveen, S. and Chakraborty, S. 2017. Review on Tomato Leaf Curl New Delhi Virus: An emerging virus complex threatening vegetable and fiber crops. *Licensee MDPI, Basel, Switzerland*. 9(264): 1-18.
- Rai, N, Pathak, R. and Tirkey. T. 2001. Studies on relationship between environmental conditions on tomato leaf curl virus (TLCV) incidence. II. Screening of tomato genotypes and their stability against TLCV. *Progressive Horticulture*. 33(1): 184-189.
- Sallam, N.A, Shaima, N.R, Mohamed, M.S. and El-eslam, A.S. 2013. Formulations of *Bacillus* spp. and *Pseudomonas fluorescens* for biocontrol of cantaloupe root rot caused by *Fusarium solani*. *Journal of Plant protection*. 6(1): 2019-2024.
- Singh, R.K , Rai, N, Singh, M, Singh, R. and Kumar, P. 2014. Effect of climate change on tomato leaf curl virus (ToLCV) disease in tomatoes. *Indian Journal of Agricultural Sciences*. 85 (2): 142-144.
- Tamilnayagan, T, Suganthy, M, Renukadevi, P. and Malathi, V.G. 2017. Screening of different germplasm against Groundnut Bud Necrosis Virus (GBNV) and Thrips in Tomato. *International Journal of Current Microbiology and Applied Sciences*. 6 (11): 2497-2502.
- Ullah, N, Ali, A, Ahmad, M, Fahim, M, Din, N. and Ahmad, F. 2017. Evaluation of tomato genotypes against tomato mosaic virus and its reduction on yield contributing parameters. *Pakistan Journal of Botany*. 49(4): 1585-1592.