

Immediate And Successful Management Of Avulsed Teeth – Case Reports

ABSTRACT

Avulsion and midroot fractures of teeth presents significant challenges in dental trauma management. These case reports outlines a comprehensive approach to the management of avulsed and midroot fractured teeth, focusing on immediate steps, long-term strategies, and clinical considerations. Midroot fractures often present with compromised structural integrity, necessitating stabilization and protection of the tooth to prevent further damage. Splinting techniques stabilize the tooth and promote healing of periodontal tissues. However, careful monitoring is crucial to assess for potential complications such as inflammatory root resorption and external root resorption. In conclusion, the management of avulsed and midroot fractured teeth requires long-term treatment strategies, and comprehensive clinical considerations. Favorable outcomes can be achieved, preserving tooth function, and aesthetics in patients with traumatic dental injuries.

Keywords: Tooth avulsion, Traumatic injury, Replantation.

INTRODUCTION;

Dental avulsion, the complete displacement of a tooth from its socket, is a traumatic dental injury that requires immediate attention. Dental avulsion most commonly occurs due to traumatic incidents such as sports injuries, falls, or accidents. Avulsion is one such serious traumatic dental injury that corresponds to the complete displacement of the tooth out of the alveolar bone socket. Avulsion of permanent teeth is relatively rare and varies from 0.5% to 16% in all traumatic dental injuries. Maxillary central incisors are the most commonly involved teeth due to their prominent position in the arch.^[1] Certain predisposing factors like protruded maxillary incisors and insufficient lip closure may affect the extent of the dental trauma.^[2] Replantation is, in most situations, the treatment of choice but cannot always be carried out immediately. Appropriate emergency management and a treatment plan are important for a good prognosis.^[3] Also, a retrospective study in children has confirmed that the replantation procedure has a long-term survival rate (79.3%) in accordance with the treatment guidelines prescribed by the International Association of Dental Traumatology (IADT).

Style Definition ... [1]

Formatted: Font: 12 pt, Font color: Auto

Formatted ... [2]

Formatted: Indent: Left: 0.07", Right: 1.05", Space Before: 3.65 pt, Line spacing: single

Formatted: Font color: Auto

Formatted: Left, Line spacing: Exactly 10 pt

Formatted: Font: Not Bold, Font color: Auto

Formatted: Font: 12 pt, Font color: Auto

Formatted: Indent: Left: 0.07", Right: 5.41", Line spacing: single

Formatted ... [3]

Formatted: Indent: Left: 0.07", Right: 0.06"

Formatted ... [4]

Formatted: Indent: Left: 0.07", Right: 0.05", Space Before: 0.3 pt, Line spacing: Multiple 1.5 li

Formatted ... [5]

Formatted: Font color: Auto

Formatted: Left, Line spacing: Exactly 10 pt

Formatted: Font: 12 pt, Font color: Auto

Formatted: Indent: Left: 0.07", Right: 2.32", Line spacing: single

Formatted ... [6]

Formatted: Font: 7.5 pt, Not Bold, Font color: Auto

Formatted: Left, Space Before: 0.35 pt, Line spacing: Exactly 7 pt

Formatted: Font: 12 pt, Font color: Auto

Formatted: Indent: Left: 0.07", Right: 4.93", Line spacing: single

Formatted ... [7]

Formatted ... [8]

Formatted ... [9]

General health of the patient, maturity of the root apex, storage medium, and extra-oral time are the factors that affect the successful outcome of the replantation procedure.^[1]

Formatted: Font: 12 pt, Font color: Auto, Pattern: Clear

The primary goal in treating an avulsed tooth is to preserve and treat the supporting tooth tissues and to replant the avulsed teeth. The success of replantation depends on the patient's general health, the maturity of the root, the time the tooth is out of its socket, and storage medium. The period of extra-oral time and the storage medium have the most critical effect on the status of the PDL cells.^[4] Delay in the replantation of avulsed incisors increases the risk of dentoalveolar ankylosis and replacement root resorption.^[5]

Formatted: Indent: Left: 0.07", Right: 0.05", Space Before: 3.65 pt, Line spacing: Multiple 1.44 li

Formatted ... [10]

Formatted: Font color: Auto

Formatted: Left, Line spacing: Exactly 10 pt

Formatted: Indent: Left: 0.07", Right: 0.05", Line spacing: Multiple 1.47 li

Formatted ... [11]

Horizontal root fractures (HRFs) involve cementum, dentine, dental pulp, bone, and periodontium. HRFs predominantly occur in mature upper incisors. Predisposing factors of HRFs could be related to the person's anatomic features, i.e., an increased overjet and inadequate lip coverage of upper anterior teeth. When compared with other forms of dental injuries, the incidence of HRFs in permanent dentition is 7.7% of all kinds of dental traumas. HRFs are usually caused by direct physical impact to the tooth, i.e., sport activities, falls, and traffic accidents. Based on the location of the fracture line, HRFs can be classified as cervical, medium, and apical, with possible dislocation of fragments.^[6] The prognosis of fractured tooth depends on many factors like age of the patient, maturity of root formation, time elapsed between trauma and treatment, site of fracture and approximation of the fractured fragments. Fractures in the cervical 1/3rd have a guarded prognosis, while those in middle and apical third have a better prognosis. The immediate treatment involves splinting and stabilization of the fractured root and is successful in approximately 80% cases with middle and apical root fractures. Endodontic treatment may be required in cases with irreversible pulpitis, necrosis or when considerable time has elapsed between treatment and trauma.^[7]

Formatted ... [12]

MTA has widely changed the traditional approaches as it has shown good clinical results in the treatment of open apices, root resorption, root perforations, and inflamed/exposed vital pulps.^[7,8] Currently,^[7,8] MTA is being used in endodontic procedures for the management of intra-alveolar HRFs and orthograde root filling approach.^[6]

Formatted ... [13]

Mineral Trioxide Aggregate (MTA) has been used multifariously in endodontics especially in cases where regeneration of cemental tissues is required, as perforation repair and root end filling.^[6] MTA has also been used successfully in cases of root fractures, apexification, apexogenesis and reinforcing structurally weakened teeth having compromised radicular dentin thickness.^[7]

Formatted: Font: 12 pt, Font color: Auto

Formatted: Normal, Indent: Left: 0.07", Right: 0.05", Line spacing: Multiple 1.47 li

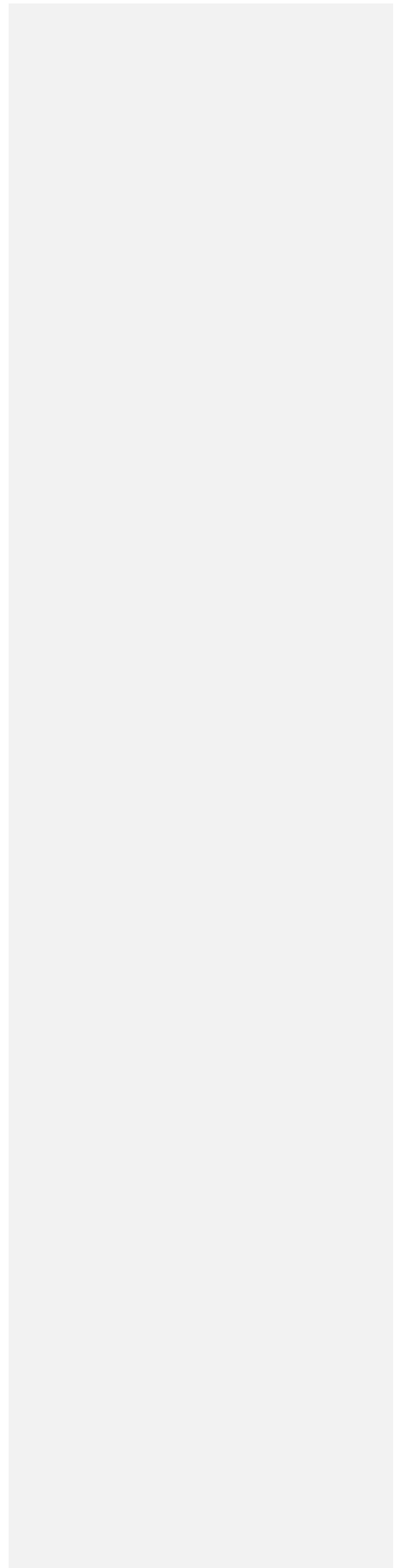
Formatted ... [14]

Recently, MTA based root canal sealer (Fillapex, Angelus) has been introduced which has advantages like better handling, faster setting and good sealing ability.^[7]

Formatted ... [15]

|
| [dentin thickness.](#) [Recently, MTA based root canal sealer \(Fillapex, Angelus\) has been](#)

UNDER PEER REVIEW



introduced which has advantages like better handling, faster setting and good sealing ability.

[7]

The present case reports discuss the management and follow-up of a avulsed tooth and healing after the use of MTA based sealers in management of avulsed and horizontal root fracture cases.

Case Report 1-

Patient of age 35 years reported to Department of Conservative Dentistry and Endodontics with avulsed tooth in upper front tooth region and complains of pain in the same region. Patient gives history of fall from 2 wheelers 2 hours back.

Medical History- No Relevant History

Intraoral Examination showed empty socket-21 (fig-1), tender on percussion-1 and 22.

Laceration of the gingiva and lips are noted. Pulp vitality was negative for 11, 21, Grade 1 mobility noted-22

On Radiographic examination- empty socket without any root fragment was noted-21, Middle third root fracture -22 (fig-2)

Treatment plan- Reimplantation of the avulsed tooth-21 followed by splinting from 13 to 23, Root canal treatment-22

Procedure- Avulsed tooth (fig-3) was irrigated with saline to remove the dust and debris, by holding only the coronal portion of the tooth, the socket was irrigated with the saline. Extraoral root canal treatment of 21 was done. After the completion of root canal treatment-21 the tooth was gently inserted back to the socket and radiograph was taken-21. After the radiographic confirmation of the position of the tooth and occlusion was checked to avoid any traumatic contact with the opposing teeth, (fig-4,5) Then the splinting was carried out from 13 to 23, Using splinting wire and the composite, (fig-6,7) Instructions were given to the patient and recalled next day for the treatment of 22.

2nd Appointment- radiograph was taken to confirm midroot fracture-22. The root canal treatment was carried out using MTA sealer -22 and temporized with ZOE (fig-8) Instructions were given. Patient was asked to report back after 1 month for followup.

Formatted ... [16]

Formatted: Font: 12 pt, Font color: Auto

Formatted ... [17]

Formatted: Normal, Indent: Left: 0.07", Right: 0.05"

Formatted: Font color: Auto

Formatted: Left, Line spacing: Exactly 10 pt

Formatted: Font: 12 pt, Font color: Auto

Formatted: Left, Space Before: 0.7 pt, Line spacing: Exactly 12 pt

Formatted: Indent: Left: 0.07", Right: 5.22", Line spacing: single

Formatted ... [18]

Formatted: Indent: Left: 0.07", Right: 0.06"

Formatted ... [19]

Formatted: Indent: Left: 0.07", Right: 3.69", Space Before: 0.2 pt, Line spacing: single

Formatted ... [20]

Formatted ... [21]

Formatted: Indent: Left: 0.07", Right: 0.05"

Formatted: Indent: Left: 0.07", Right: 0.05", Space Before: 0.2 pt, Line spacing: Multiple 1.5 li

Formatted ... [22]

Formatted: Indent: Left: 0.07", Right: 0.05", Space Before: 0.1 pt

Formatted ... [23]

Formatted: Indent: Left: 0.07", First line: 0.04", Right: 0.05", Space Before: 0.15 pt

Formatted ... [24]

Formatted ... [25]

Formatted ... [26]

1 month follow up radiograph showed nonperiapical changes-21,22. Laceration on the gingiva and lips were healed.(fig-9,10) And patient was symptom free. Patient asked to report back after 2 weeks for splint removal.

6 month follow up showed no mobility and on radiographic examination no sign of resorption, no periapical changes noted.(Fig-11,12)



Fig1-Preoperative picture of empty bleeding socket-21



Formatted: Font: 12 pt, Font color: Auto

Formatted: Indent: Left: 0.07", Right: 0.06", Space Before: 3.65 pt

Formatted [27]

Formatted: Indent: Left: 0.07", Right: 0.05", Space Before: 0.15 pt

Formatted [28]

Formatted: Font: 8.5 pt, Font color: Auto

Formatted: Left, Space Before: 0.25 pt, Line spacing: Exactly 8 pt

Formatted: Font color: Auto

Formatted: Left, Line spacing: Exactly 10 pt

Formatted: Font color: Text 1

Formatted: Indent: Left: 0.07", Right: 2.54", Line spacing: single, Tab stops: Not at 1.55"

Formatted [29]

Formatted: Font color: Text 1

Formatted: Font: 11 pt, Font color: Auto

Formatted: Left, Space Before: 0.9 pt, Line spacing: Exactly 11 pt

Fig2-preoperativeradiographshowingempty socketwithoutanyrootfragment-21, horizontal root fracturein middle third of -22



Formatted: Font: 12 pt, Font color: Auto, Condensed by 0.05 pt

Formatted: Indent: Left: 0.07", Right: 0.05", Line spacing: Multiple 1.5 li

Formatted ... [30]

Formatted: Font color: Text 1

Fig3 -Avulsed tooth -22



Formatted ... [31]

Formatted: Font color: Text 1

UNDER REVIEW



Fig4 – Repositioning of the Avulsed tooth into the socket



Fig-5-Confirmation radiograph of repositioning of avulsed tooth-21



Formatted	... [33]
Formatted	... [32]
Formatted	... [34]
Formatted	... [35]
Formatted	... [36]
Formatted	... [37]
Formatted	... [38]
Formatted	... [39]
Formatted	... [40]
Formatted	... [41]
Formatted	... [42]
Formatted	... [43]
Formatted	... [44]
Formatted	... [45]
Formatted	... [46]
Formatted	... [47]
Formatted	... [48]
Formatted	... [49]
Formatted	... [50]
Formatted	... [51]
Formatted	... [72]
Formatted	... [73]
Formatted	... [52]
Formatted	... [53]
Formatted	... [54]
Formatted	... [55]
Formatted	... [56]
Formatted	... [57]
Formatted	... [58]
Formatted	... [59]
Formatted	... [60]
Formatted	... [61]
Formatted	... [62]
Formatted	... [63]
Formatted	... [64]
Formatted	... [65]
Formatted	... [66]
Formatted	... [67]
Formatted	... [71]
Formatted	... [68]
Formatted	... [69]
Formatted	... [70]
Formatted	... [74]
Formatted	... [75]
Formatted	... [76]



Fig .6 -Splintingfromcanine to canine



Formatted: Font: 12 pt, Font color: Auto, Condensed by 0.05 pt

Formatted: Font: 12 pt, Font color: Auto

Formatted: Font color: Auto, Condensed by 0.05 pt

Formatted: Font: 12 pt, Font color: Auto

Formatted: Font color: Auto, Condensed by 0.05 pt

Formatted: Font: 12 pt, Font color: Auto, Expanded by 0.05 pt

Formatted: Font: 12 pt, Font color: Auto

Formatted: Font color: Auto, Expanded by 0.05 pt

Formatted: Font: 12 pt, Font color: Auto

Formatted: Font color: Auto, Expanded by 0.05 pt

Formatted: Font: 12 pt, Font color: Auto

Formatted: Font: 12 pt, Font color: Auto, Condensed by 0.05 pt

Formatted: Font: 12 pt, Font color: Auto

Formatted: Font: 12 pt, Font color: Auto, Condensed by 0.05 pt

Formatted: Font: 12 pt, Font color: Auto, Expanded by 0.05 pt

Formatted: Font: 12 pt, Font color: Auto

Formatted: Font color: Auto, Condensed by 0.05 pt

Formatted: Font color: Auto

Formatted: Font color: Text 1



Fig-7 Intraoral picture of splinting from canine to canine



Fig-8 – root canal treatment completed-22



Formatted: Font: 12 pt, Font color: Auto, Condensed by 0.05 pt

Formatted: Left, Indent: Left: 0.07", Space Before: 1.45 pt, Line spacing: single

Formatted ... [77]

Formatted: Font: 8 pt, Font color: Auto

Formatted: Left, Space Before: 0.45 pt, Line spacing: Exactly 8 pt

Formatted: Font color: Auto

Formatted: Left, Line spacing: Exactly 10 pt

Formatted: Font color: Text 1

Formatted: Left, Indent: Left: 0.07", Line spacing: single

Formatted ... [78]

Formatted: Font color: Auto

Formatted: Left, Line spacing: Exactly 10 pt



Fig- 9-Onemonth postoperativeintraoral picture showing healing of lacerations



Formatted: Font color: Text 1

Formatted: Font: 12 pt, Font color: Auto, Condensed by 0.05 pt

Formatted: Font: 12 pt, Font color: Auto

Formatted: Font color: Auto, Expanded by 0.1 pt

Formatted: Font: 12 pt, Font color: Auto

Formatted ... [79]

Formatted: Font: 12 pt, Font color: Auto

Formatted ... [80]

Formatted: Font: 12 pt, Font color: Auto

Formatted ... [81]

Formatted: Font: 12 pt, Font color: Auto

Formatted ... [82]

Formatted: Font: 12 pt, Font color: Auto

Formatted ... [83]

Formatted: Font: 12 pt, Font color: Auto

Formatted ... [84]

Formatted ... [85]

Formatted: Font: 12 pt, Font color: Auto

Formatted ... [86]

Formatted: Font: 12 pt, Font color: Auto

Formatted ... [87]

Formatted ... [88]

Formatted: Font: 12 pt, Font color: Auto

Formatted ... [89]

Formatted: Font: 12 pt, Font color: Auto

Formatted ... [90]

Formatted ... [91]

Formatted: Font color: Auto

Formatted ... [92]

Formatted ... [93]

Formatted: Font: 12 pt, Font color: Auto

Formatted ... [94]

Formatted ... [95]

Formatted ... [96]

Formatted: Font: 12 pt, Font color: Auto

Formatted ... [97]

Formatted: Font: 12 pt, Font color: Auto

Formatted ... [98]

Formatted: Font: 12 pt, Font color: Auto

Formatted: Font color: Text 1

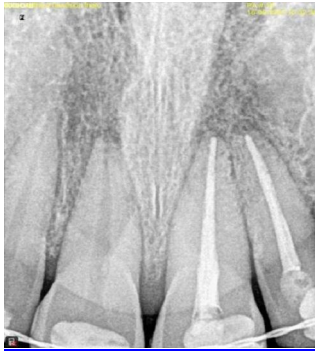


Fig-10 -Onemonth followup radiograph



Fig-11 -3 months follow up radiograph with no periapical changes



Formatted	[... [99]
Formatted	[... [103]
Formatted	[... [108]
Formatted	[... [100]
Formatted	[... [101]
Formatted	[... [102]
Formatted	[... [107]
Formatted	[... [104]
Formatted	[... [105]
Formatted	[... [106]
Formatted	[... [109]
Formatted	[... [110]
Formatted	[... [111]
Formatted	[... [112]
Formatted	[... [113]
Formatted	[... [114]
Formatted	[... [115]
Formatted	[... [116]
Formatted	[... [117]
Formatted	[... [118]
Formatted	[... [139]
Formatted	[... [140]
Formatted	[... [119]
Formatted	[... [120]
Formatted	[... [121]
Formatted	[... [122]
Formatted	[... [123]
Formatted	[... [124]
Formatted	[... [125]
Formatted	[... [126]
Formatted	[... [127]
Formatted	[... [128]
Formatted	[... [129]
Formatted	[... [130]
Formatted	[... [131]
Formatted	[... [132]
Formatted	[... [133]
Formatted	[... [134]
Formatted	[... [138]
Formatted	[... [135]
Formatted	[... [136]
Formatted	[... [137]
Formatted	[... [141]
Formatted	[... [142]
Formatted	[... [143]
Formatted	[... [144]
Formatted	[... [145]
Formatted	[... [146]



Fig-12 Intra-oral picture after splint removal.

Formatted: Font color: Text 1

Formatted: Font: 12 pt, Font color: Auto, Condensed by 0.05 pt

Formatted: Font: 12 pt, Font color: Auto

Formatted: Font color: Auto, Condensed by 0.05 pt

Formatted: Font: 12 pt, Font color: Auto

Formatted: Font: 12 pt, Font color: Auto, Condensed by 0.15 pt

Formatted: Font: 12 pt, Font color: Auto

Formatted: Font color: Auto, Expanded by 0.1 pt

Formatted: Font: 12 pt, Font color: Auto, Condensed by 0.05 pt

Formatted: Font: 12 pt, Font color: Auto

Formatted: Font color: Auto, Condensed by 0.1 pt

Formatted: Font: 12 pt, Font color: Auto

Formatted: Font color: Auto, Expanded by 0.05 pt

Formatted: Font: 12 pt, Font color: Auto, Condensed by 0.05 pt

Formatted: Font: 12 pt, Font color: Auto

Formatted: Font color: Auto, Expanded by 0.1 pt

Formatted: Font: 12 pt, Font color: Auto

Formatted: Font: 12 pt, Font color: Auto, Expanded by 0.05 pt

Formatted: Font: 12 pt, Font color: Auto

Formatted: Font color: Auto, Condensed by 0.05 pt

Formatted: Font: 12 pt, Font color: Auto

Formatted: Font: 12 pt, Font color: Auto, Condensed by 0.1 pt

Formatted: Font: 12 pt, Font color: Auto

Formatted: Font color: Auto, Expanded by 0.1 pt

Formatted: Font: 12 pt, Font color: Auto

Case report 2 -

Patient of age 16 years reported to Department of Conservative Dentistry and Endodontics with avulsed tooth in upper front tooth region and complains of pain in the same region. Patient gives history of fall 24 hours back. And kept the avulsed tooth in milk.

Medical History- No Relevant History

Intraoral Examination showed empty socket with blood clot-22 . (fig-13.a)

On Radiographic examination empty socket without any root fragment was noted-22 (fig-13.b)

Treatment plan- Reimplantation of the avulsed tooth-22 followed by splinting from 12 to 23.

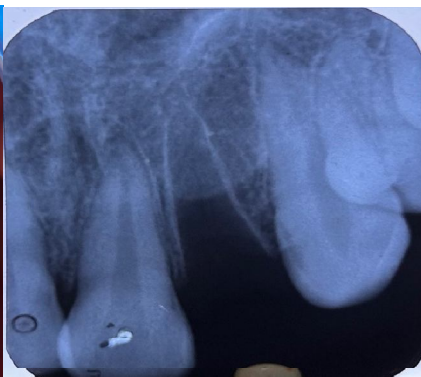
Procedure- Avulsed tooth (fig-13.c) was irrigated with saline to remove the dust and debris, by holding only the coronal portion of the tooth, the socket was irrigated with the saline, extraoral root canal treatment of 22 was done (fig-14). After the completion of root canal treatment-22 the tooth was gently inserted back to the socket (fig-15) and radiograph was taken-22 (fig-16).

After the radiographic confirmation of the position of the tooth and occlusion was checked to avoid any traumatic contact with the opposing teeth. Then the splinting was carried out from 12 to 23 (fig-17), using splinting wire and the composite. Instructions were given to the patient and recalled after 1 month for followup.

2nd appointment- 1 month followup radiograph showed no periapical changes-22. And patient was symptom free. Patient asked to report back after 2 weeks for splint removal. (fig-18)

3rd appointment- Followup radiograph was taken which showed no signs of resorption or radiolucency-22, splint removal done and Composite restoration done - 22 (fig-19).

- Formatted: Font color: Auto
- Formatted: Left, Line spacing: Exactly 10 pt
- Formatted: Font: 12 pt, Font color: Auto
- Formatted: Left, Space Before: 0.9 pt, Line spacing: Exactly 12 pt
- Formatted ... [148]
- Formatted: Font: 6.5 pt, Not Bold, Font color: Auto
- Formatted: Left, Space Before: 0.1 pt, Line spacing: Exactly 6 pt
- Formatted: Font: 12 pt, Font color: Auto, Expanded by 0.05 pt
- Formatted: Indent: Left: 0.07", Right: 0.06"
- Formatted ... [149]
- Formatted: Indent: Left: 0.07", Right: 3.69", Space Before: 0.3 pt, Line spacing: single
- Formatted ... [150]
- Formatted: Font: 12 pt, Font color: Auto, Condensed by 0.15 pt
- Formatted: Indent: Left: 0.07", Right: 1.23", Line spacing: single
- Formatted ... [151]
- Formatted ... [152]
- Formatted: Font: 12 pt, Font color: Auto
- Formatted: Indent: Left: 0.07", Right: 5.97", Line spacing: single
- Formatted ... [153]
- Formatted ... [154]
- Formatted: Font: 12 pt, Font color: Auto
- Formatted: Left, Indent: Left: 0.07", Right: 0.06", Space Before: 0.2 pt, Line spacing: Multiple 1.5 li
- Formatted ... [155]
- Formatted ... [156]
- Formatted ... [157]
- Formatted: Font: 12 pt, Font color: Auto
- Formatted: Indent: Left: 0.07", Right: 6.1", Line spacing: single
- Formatted ... [158]



Formatted: Font color: Text 1

UNDER PEER REVIEW



Fig 13. a. preoperative pictures showing empty space near 22 region 13. b. show empty socket without any fractured root fragment, 13. c. Avulsed tooth



Formatted: Left, Indent: Left: 0.07", Right: 0.04", Space Before: 1.45 pt, Line spacing: Multiple 1.5 li

Formatted [159]

Formatted: Font color: Text 1

Fig14-Extraoral RCT-22



Formatted: Font: 12 pt, Font color: Auto, Condensed by 0.05 pt

Formatted: Font: 12 pt, Font color: Auto

Formatted: Font: 12 pt, Font color: Auto, Expanded by 0.1 pt

Formatted: Font: 12 pt, Font color: Auto

Formatted: Font: 12 pt, Font color: Auto, Expanded by 0.1 pt

Formatted: Font: 12 pt, Font color: Auto

Formatted: Font color: Auto, Condensed by 0.05 pt

Formatted: Font: 12 pt, Font color: Auto

Formatted: Font color: Auto, Condensed by 0.1 pt

Formatted: Font: 12 pt, Font color: Auto

Formatted: Font color: Auto, Expanded by 0.05 pt

Formatted: Font: 12 pt, Font color: Auto

Formatted: Font color: Auto, Expanded by 0.1 pt

Formatted: Font color: Text 1

UNDER PEER REVIEW



Fig-15 Reimplantation of 22 into the socket



Fig-16 Radiographic confirmation of 22 position in the socket

Formatted: Font: 12 pt, Font color: Auto, Condensed by 0.05 pt

Formatted: Indent: Left: 0.09", Hanging: 4.8", Right: 0.08", Space Before: 1.45 pt, Line spacing: Multiple 1.5 li

Formatted ... [160]

Formatted: Font color: Text 1



Fig -17 Splinting from 12 to 23



Fig - 18 Splint removal done after 6 weeks

Formatted: Font: 12 pt, Font color: Auto, Condensed by 0.05 pt

Formatted: Left, Indent: Left: 0.07", Line spacing: single

Formatted ... [161]





Fig-19 Compositerestoration done-22

Formatted: Font color: Text 1

Formatted: Font: 12 pt, Font color: Auto, Condensed by 0.05 pt

Formatted: Font: 12 pt, Font color: Auto

Formatted: Font color: Auto, Condensed by 0.05 pt

Formatted: Font: 12 pt, Font color: Auto

Formatted: Font color: Auto, Expanded by 0.05 pt

Formatted: Font: 12 pt, Font color: Auto

Formatted: Font: 12 pt, Font color: Auto, Condensed by 0.1 pt

Formatted: Font: 12 pt, Font color: Auto

Formatted: Font color: Auto, Expanded by 0.1 pt

Formatted: Font: 12 pt, Font color: Auto, Condensed by 0.05 pt

Formatted: Font: 12 pt, Font color: Auto

Formatted: Font: 12 pt, Font color: Auto, Expanded by 0.05 pt

Formatted: Font: 12 pt, Font color: Auto

Formatted: Font: 12 pt, Font color: Auto, Condensed by 0.05 pt

Formatted: Font: 12 pt, Font color: Auto

UNDER PEER REVIEW

Discussion

The occurrence of dental avulsion, or the complete displacement of a tooth from its socket, is relatively low compared to other dental injuries. The prevalence of avulsion can vary based on several factors, including age, gender, and activities that carry a high risk of dental trauma. Studies have reported that dental avulsion represents a small percentage of all dental injuries. The incidence is often higher in younger age groups, particularly in children and adolescents who are more active in sports and recreational activities. According to some studies, dental avulsion accounts for approximately 0.5% to 3% of all dental injuries.

Middle third root fractures pose unique challenges in dental traumatology, requiring precise management to preserve tooth and structural integrity. This article explains the comprehensive approach of utilizing Mineral Trioxide Aggregate (MTA) sealer in conjunction with a 6-week splinting protocol for effective management of middle third root fractures. Middle third root fractures typically involve the dental pulp and root canal space, often resulting from traumatic incidents. These fractures can compromise both the functional and aesthetic aspects of the affected tooth, necessitating immediate attention and an appropriate treatment strategy. Upon presentation of a patient with a middle third root fracture, a thorough clinical and radiographic assessment is crucial. This includes evaluating the extent of the fracture, the stability of the tooth, and the involvement of surrounding structures. MTA Sealer Application: Mineral Trioxide Aggregate (MTA), known for its biocompatibility and sealing properties, has become a cornerstone in endodontic therapy. In cases of middle third root fractures, MTA sealer is applied strategically to achieve several objectives: Sealing the Fracture Line: Encouraging Dentin Bridge Formation; Biological Compatibility. Splinting Protocol: A carefully planned splinting protocol plays a pivotal role in the success of middle third root fracture management. A 6-week splinting period is often recommended.

Immobilizing the fractured tooth is crucial to prevent further displacement and promote healing. A flexible splinting material is preferred to minimize stress on the injured tooth.

Regular clinical monitoring during the splinting period helps assess the healing progress, stability, and the need for any adjustments in the treatment plan.

Post-Splinting Evaluation: Following the 6-week splinting period, a comprehensive evaluation is conducted to assess the healing response, stability, and overall health of the tooth. Radiographic examinations are employed to confirm dentin bridge formation and the absence of periapical pathology.

The ideal splinting period for avulsion and middle third tooth fractures may vary depending on several factors, including the extent of the injury, the type of treatment rendered, and the

Formatted: Font: 12 pt, Font color: Auto

Formatted: Indent: Left: 0.07", Right: 5.57", Space Before: 3.9 pt, Line spacing: single

Formatted ... [162]

Formatted: Indent: Left: 0.07", Right: 0.06"

Formatted ... [163]

Formatted: Indent: Left: 0.07", Right: 0.05", Space Before: 0.3 pt

Formatted ... [164]

Formatted: Font: 12 pt, Font color: Auto, Condensed by 0.15 pt

Formatted: Indent: Left: 0.07", Right: 0.06", Space Before: 0.3 pt, Line spacing: Multiple 1.5 li

Formatted ... [165]

Formatted ... [166]

Formatted ... [167]

Formatted ... [168]

individual patient's response to the intervention. Generally, splinting is employed to stabilize the affected tooth or teeth, allowing for healing and preventing further damage.

The use of a splint is determined by the stability of the tooth and the treatment rendered. In cases where a flexible splint is employed, the ideal splinting period is often around 4 to 6 weeks. This duration allows for initial healing and stabilization of the fractured tooth.

The post-splinting period involves clinical and radiographic evaluation to assess the tooth's response to treatment, including dentin bridge formation and resolution of any periapical pathology.

Conclusion-Dental avulsion is a dental emergency that requires immediate attention. Being aware of the causes, taking prompt action, and adopting preventive measures can contribute to better outcomes in cases of dental avulsion. Seeking immediate professional care is essential for successful re-implantation and the preservation of oral health. Timely intervention, accurate diagnosis, and appropriate management strategies are essential for achieving the best possible outcomes.

References

1. Kadulkar N, Katakia R, Deka A, Thonai S. Replantation of an Avulsed Tooth: A Case Report. Cureus. 2023 May 18;15(5):e39198.
2. Ram D, Cohenca N. Therapeutic protocols for avulsed permanent teeth: review and clinical update. Pediatric dentistry. 2004 May 1;26(3):251-5.
3. Fouad AF, Abbott PV, Tsilingaridis G, Cohenca N, Lauridsen E, Bourguignon C, O'Connell A, Flores MT, Day PF, Hicks L, Andreasen JO. International Association of Dental Traumatology guidelines for the management of traumatic dental injuries: 2. Avulsion of permanent teeth. Dental traumatology. 2020 Aug;36(4):331-42.

Formatted: Font: 12 pt, Font color: Auto

Formatted: Indent: Left: 0.07", Right: 0.06", Space Before: 3.65 pt, Line spacing: Multiple 1.5 li

Formatted ... [169]

Formatted: Indent: Left: 0.07", Right: 0.05", Space Before: 0.35 pt

Formatted ... [170]

Formatted: Indent: Left: 0.07", Right: 0.06", Space Before: 0.2 pt

Formatted ... [171]

Formatted: Font color: Auto

Formatted: Left, Line spacing: Exactly 10 pt

Formatted: Font: 11 pt, Font color: Auto

Formatted: Left, Space Before: 0.75 pt, Line spacing: Exactly 11 pt

Formatted: Font: 12 pt, Font color: Auto

Formatted: Indent: Left: 0.07", Right: 0.05", Line spacing: Multiple 1.5 li

Formatted ... [172]

Formatted: Font: 12 pt, Font color: Auto, Lowered by 17 pt

Formatted: Indent: Left: 0.07", Right: 2.68", Line spacing: Exactly 97 pt

Formatted ... [173]

Formatted: Font: 12 pt, Font color: Black, Pattern: Clear

Formatted: Normal, Left, Indent: Left: 0.57", Line spacing: Exactly 13 pt, No bullets or numbering

Formatted ... [174]

Formatted: Font: 6.5 pt, Font color: Auto

Formatted: Left, Space Before: 0.1 pt, Line spacing: Exactly 6 pt

Formatted: Normal, Indent: Left: 0.32", Hanging: 0.25", Right: 0.06", Space Before: 1.3 pt, Line spacing: Multiple 1.45 li, No bullets or numbering

Formatted ... [175]

Formatted: Normal, Left, Line spacing: Exactly 10 pt

Formatted: Font color: Black, Condensed by 0.05 pt, Pattern: Clear

4. Selcuk Savas, Ebru Kucukyilmaz, Merve Akcay, Serhat Koseoglu, "Delayed Replantation of Avulsed Teeth: Two Case Reports", *Case Reports in Dentistry*, vol. 4, 2015, Article ID 197202.

Formatted: Font: 12 pt, Font color: Black, Expanded by 0.05 pt, Pattern: Clear

Formatted ... [176]

Formatted ... [177]

5. Sahar Ameli, Karim Jafari, Firouz Zafatah, Mehrdad Blurian and Somayeh Hekmatfar. Delayed Replantation of Avulsed Teeth: A Case Report. *Zahedan Journal of Research in Medical Sciences*, 23(2):e95795.

Formatted: Normal, Left, Indent: Left: 0.57", Line spacing: single, No bullets or numbering

Formatted: Font: 7.5 pt, Font color: Auto

Formatted: Normal, Left, Space Before: 0.15 pt, Line spacing: Exactly 7 pt

Formatted ... [178]

6. Asgary S, Mirmohammadi H, Parhizkar A. Management of Symptomatic Horizontal Mid-root Fractures after Unsuccessful Orthograde Endodontic Retreatments. *Cureus*. 2019 Aug 24;11(8):e5473. doi:10.7759/cureus.5473. PMID: 32175201.

Formatted: Normal, Indent: Left: 0.32", Hanging: 0.25", Right: 0.05", Line spacing: Multiple 1.47 li, No bullets or numbering

7. Rhythm Bains, Pranab Mishra, Kapil Loomba and Anju Loomba. Management of a mid-root horizontal fracture using Ni-Ti file and MT A based sealer: Two year follow-up. *Asian Journal of Oral Health & Allied Sciences* 2014, Volume 4 Issue.

Formatted: Font: 12 pt, Font color: Black, Pattern: Clear

Formatted: Font: 12 pt, Font color: Auto, Pattern: Clear

Formatted: Font: 12 pt, Font color: Auto, Pattern: Clear

Formatted: Normal, Left, Indent: Left: 0.57", Line spacing: single, No bullets or numbering

Formatted: Font color: Auto

Formatted: Normal, Indent: Left: 0.32", Hanging: 0.25", Right: 0.05", Line spacing: Multiple 1.47 li, No bullets or numbering

Formatted ... [179]

To make this article publishable in the *International Journal of Medical and Pharmaceutical Case Reports*, several improvements should be made to enhance clarity, coherence, and adherence to academic standards. Below are the detailed review points:

Abstract:

- Clarity:** The abstract should be more concise and clearly present the objective, method, and outcome. There is some repetition that can be streamlined.
- Specifics:** Instead of vague terms like "comprehensive approach," briefly summarize the key interventions.
- Outcome Emphasis:** Clearly state the outcomes of the interventions in both cases to emphasize the success or failure.
- Flow:** Use a consistent tense, preferably the past tense, to describe the interventions and results.

Introduction:

- Redundancy:** The definition of dental avulsion is repeated multiple times. Ensure that each sentence introduces new information.
- Citations:** Some statements require citations, especially where percentages or statistical information is provided.
- Flow:** The introduction should flow logically from the definition of avulsion to the management strategies. The information about horizontal root fractures could be introduced in a separate section for clarity.
- Language:** Consider refining the language to sound more academic. Phrases like "avulsion is one such serious traumatic injury" could be more concise.

Case Reports:

1. **Formatting and Structure:** Use consistent formatting for the case reports. Each case should follow a structured format with sections like:
 - o History and Presentation
 - o Clinical Examination
 - o Radiographic Findings
 - o Treatment Plan
 - o Procedure
 - o Follow-up
2. **Details:** While the details of the procedures are thorough, some sentences are lengthy and difficult to follow. Break down longer sentences for clarity.
3. **Figures:** Ensure the figures are correctly numbered and referenced consistently throughout the text. Use clear descriptions for each figure and ensure that they are legible.
4. **Follow-Up Information:** The follow-up for Case Report 2 is not as detailed as the first. Ensure consistency in how follow-up outcomes are reported.

Discussion:

1. **Structure:** The discussion section should be better organized to flow from general observations to specific conclusions. It currently jumps between topics.
2. **Critical Analysis:** Include more critical analysis of the treatment methods, particularly the use of MTA. Discuss the potential advantages or challenges of MTA in root fractures, citing recent studies.
3. **Comparison:** Compare your findings with similar case reports or studies, and highlight how this case contributes to the existing literature.
4. **Outcomes:** Clearly emphasize the outcomes in terms of patient recovery, tooth function, and the absence of complications like root resorption.

Conclusion:

1. **Refinement:** The conclusion could be more concise and focus on summarizing key findings from the case reports rather than general advice. Reiterate the importance of early intervention and the use of MTA-based sealers for avulsed and fractured teeth.

References:

1. **Update References:** Ensure that all references are up-to-date and relevant. Consider including more recent articles, especially those within the last five years.
2. **Formatting:** Follow the journal's specific reference formatting guidelines, which may involve using a particular citation style (e.g., Vancouver).

Additional Notes:

- **Language:** Ensure that the entire manuscript is checked for grammatical accuracy and academic tone. Consider professional editing services if needed.

□ **Journal Requirements:** Ensure the manuscript adheres to the specific submission guidelines of the *International Journal of Medical and Pharmaceutical Case Reports*, including word count, citation style, and structure.

By addressing these points, the article will be more structured, academically rigorous, and suitable for publication. Good luck and all the best!

Formatted: Left: 0.93", Right: 0.96", Top: 0.94", Bottom: 0.19", Height: 11.71", Header distance from edge: 0.5", Footer distance from edge: 0.5"

UNDER PEER REVIEW

Formatted: Normal, Left, Indent: Left: 0.15"

Formatted: Font color: Auto

9/11/2024 11:28:00 AM

9/11/2024 11:28:00 AM

9/11/2024 11:28:00 AM

9/11/2024 11:28:00 AM

9/11/2024 11:28:00 AM

9/11/2024 11:28:00 AM

9/11/2024 11:28:00 AM

9/11/2024 11:28:00 AM

9/11/2024 11:28:00 AM

9/11/2024 11:28:00 AM

9/11/2024 11:28:00 AM

9/11/2024 11:28:00 AM

9/11/2024 11:28:00 AM

9/11/2024 11:28:00 AM

9/11/2024 11:28:00 AM

9/11/2024 11:28:00 AM

9/11/2024 11:28:00 AM

9/11/2024 11:28:00 AM

9/11/2024 11:28:00 AM

9/11/2024 11:28:00 AM

9/11/2024 11:28:00 AM

9/11/2024 11:28:00 AM

9/11/2024 11:28:00 AM

9/11/2024 11:28:00 AM

9/11/2024 11:28:00 AM

9/11/2024 11:28:00 AM

9/11/2024 11:28:00 AM

9/11/2024 11:28:00 AM

9/11/2024 11:28:00 AM

9/11/2024 11:28:00 AM

9/11/2024 11:28:00 AM

9/11/2024 11:28:00 AM

9/11/2024 11:28:00 AM

9/11/2024 11:28:00 AM

9/11/2024 11:28:00 AM

9/11/2024 11:28:00 AM

9/11/2024 11:28:00 AM

9/11/2024 11:28:00 AM

9/11/2024 11:28:00 AM

9/11/2024 11:28:00 AM

9/11/2024 11:28:00 AM

9/11/2024 11:28:00 AM

9/11/2024 11:28:00 AM

9/11/2024 11:28:00 AM

9/11/2024 11:28:00 AM

9/11/2024 11:28:00 AM

9/11/2024 11:28:00 AM

9/11/2024 11:28:00 AM

9/11/2024 11:28:00 AM

9/11/2024 11:28:00 AM

9/11/2024 11:28:00 AM

9/11/2024 11:28:00 AM

9/11/2024 11:28:00 AM

9/11/2024 11:28:00 AM

9/11/2024 11:28:00 AM

9/11/2024 11:28:00 AM

9/11/2024 11:28:00 AM

9/11/2024 11:28:00 AM

9/11/2024 11:28:00 AM

9/11/2024 11:28:00 AM

9/11/2024 11:28:00 AM

9/11/2024 11:28:00 AM

9/11/2024 11:28:00 AM

9/11/2024 11:28:00 AM

9/11/2024 11:28:00 AM

9/11/2024 11:28:00 AM

9/11/2024 11:28:00 AM

9/11/2024 11:28:00 AM

9/11/2024 11:28:00 AM

9/11/2024 11:28:00 AM

9/11/2024 11:28:00 AM

9/11/2024 11:28:00 AM

9/11/2024 11:28:00 AM

9/11/2024 11:28:00 AM

9/11/2024 11:28:00 AM

9/11/2024 11:28:00 AM

9/11/2024 11:28:00 AM

9/11/2024 11:28:00 AM

9/11/2024 11:28:00 AM

9/11/2024 11:28:00 AM

9/11/2024 11:28:00 AM

9/11/2024 11:28:00 AM

9/11/2024 11:28:00 AM

9/11/2024 11:28:00 AM

9/11/2024 11:28:00 AM

9/11/2024 11:28:00 AM

9/11/2024 11:28:00 AM

9/11/2024 11:28:00 AM

9/11/2024 11:28:00 AM

9/11/2024 11:28:00 AM

9/11/2024 11:28:00 AM

9/11/2024 11:28:00 AM

9/11/2024 11:28:00 AM

9/11/2024 11:28:00 AM

9/11/2024 11:28:00 AM

9/11/2024 11:28:00 AM

9/11/2024 11:28:00 AM

9/11/2024 11:28:00 AM

9/11/2024 11:28:00 AM

9/11/2024 11:28:00 AM

9/11/2024 11:28:00 AM

9/11/2024 11:28:00 AM

9/11/2024 11:28:00 AM

9/11/2024 11:28:00 AM

9/11/2024 11:28:00 AM

9/11/2024 11:28:00 AM

9/11/2024 11:28:00 AM

9/11/2024 11:28:00 AM

9/11/2024 11:28:00 AM

9/11/2024 11:28:00 AM

9/11/2024 11:28:00 AM

9/11/2024 11:28:00 AM

9/11/2024 11:28:00 AM

9/11/2024 11:28:00 AM

9/11/2024 11:28:00 AM

9/11/2024 11:28:00 AM

9/11/2024 11:28:00 AM

9/11/2024 11:28:00 AM

9/11/2024 11:28:00 AM

9/11/2024 11:28:00 AM

9/11/2024 11:28:00 AM

9/11/2024 11:28:00 AM

9/11/2024 11:28:00 AM

9/11/2024 11:28:00 AM

9/11/2024 11:28:00 AM

9/11/2024 11:28:00 AM

9/11/2024 11:28:00 AM

9/11/2024 11:28:00 AM

9/11/2024 11:28:00 AM

9/11/2024 11:28:00 AM

9/11/2024 11:28:00 AM

9/11/2024 11:28:00 AM

9/11/2024 11:28:00 AM

9/11/2024 11:28:00 AM

9/11/2024 11:28:00 AM

9/11/2024 11:28:00 AM

9/11/2024 11:28:00 AM

9/11/2024 11:28:00 AM

9/11/2024 11:28:00 AM

9/11/2024 11:28:00 AM

9/11/2024 11:28:00 AM

9/11/2024 11:28:00 AM

9/11/2024 11:28:00 AM

9/11/2024 11:28:00 AM

9/11/2024 11:28:00 AM

9/11/2024 11:28:00 AM

9/11/2024 11:28:00 AM

9/11/2024 11:28:00 AM

9/11/2024 11:28:00 AM

9/11/2024 11:28:00 AM

9/11/2024 11:28:00 AM

9/11/2024 11:28:00 AM

9/11/2024 11:28:00 AM

9/11/2024 11:28:00 AM

9/11/2024 11:28:00 AM

9/11/2024 11:28:00 AM

9/11/2024 11:28:00 AM

9/11/2024 11:28:00 AM

9/11/2024 11:28:00 AM

9/11/2024 11:28:00 AM

9/11/2024 11:28:00 AM

9/11/2024 11:28:00 AM

9/11/2024 11:28:00 AM

9/11/2024 11:28:00 AM

9/11/2024 11:28:00 AM

9/11/2024 11:28:00 AM

9/11/2024 11:28:00 AM

9/11/2024 11:28:00 AM

9/11/2024 11:28:00 AM

9/11/2024 11:28:00 AM

9/11/2024 11:28:00 AM

9/11/2024 11:28:00 AM

9/11/2024 11:28:00 AM

9/11/2024 11:28:00 AM

9/11/2024 11:28:00 AM

9/11/2024 11:28:00 AM

9/11/2024 11:28:00 AM

9/11/2024 11:28:00 AM

9/11/2024 11:28:00 AM

9/11/2024 11:28:00 AM

9/11/2024 11:28:00 AM

9/11/2024 11:28:00 AM

9/11/2024 11:28:00 AM

9/11/2024 11:28:00 AM

9/11/2024 11:28:00 AM

9/11/2024 11:28:00 AM

9/11/2024 11:28:00 AM

9/11/2024 11:28:00 AM

9/11/2024 11:28:00 AM

9/11/2024 11:28:00 AM

9/11/2024 11:28:00 AM

9/11/2024 11:28:00 AM

9/11/2024 11:28:00 AM

9/11/2024 11:28:00 AM

9/11/2024 11:28:00 AM

9/11/2024 11:28:00 AM

9/11/2024 11:28:00 AM

9/11/2024 11:28:00 AM

9/11/2024 11:28:00 AM

9/11/2024 11:28:00 AM

9/11/2024 11:28:00 AM

9/11/2024 11:28:00 AM

9/11/2024 11:28:00 AM

9/11/2024 11:28:00 AM

9/11/2024 11:28:00 AM

9/11/2024 11:28:00 AM

9/11/2024 11:28:00 AM

9/11/2024 11:28:00 AM

9/11/2024 11:28:00 AM

9/11/2024 11:28:00 AM

9/11/2024 11:28:00 AM

9/11/2024 11:28:00 AM

9/11/2024 11:28:00 AM

9/11/2024 11:28:00 AM

9/11/2024 11:28:00 AM

9/11/2024 11:28:00 AM

9/11/2024 11:28:00 AM

9/11/2024 11:28:00 AM

9/11/2024 11:28:00 AM

9/11/2024 11:28:00 AM

9/11/2024 11:28:00 AM

9/11/2024 11:28:00 AM

9/11/2024 11:28:00 AM

9/11/2024 11:28:00 AM

9/11/2024 11:28:00 AM

9/11/2024 11:28:00 AM

9/11/2024 11:28:00 AM

9/11/2024 11:28:00 AM

9/11/2024 11:28:00 AM

9/11/2024 11:28:00 AM

9/11/2024 11:28:00 AM

9/11/2024 11:28:00 AM

9/11/2024 11:28:00 AM

9/11/2024 11:28:00 AM

9/11/2024 11:28:00 AM

9/11/2024 11:28:00 AM

9/11/2024 11:28:00 AM

9/11/2024 11:28:00 AM

9/11/2024 11:28:00 AM

9/11/2024 11:28:00 AM

9/11/2024 11:28:00 AM

9/11/2024 11:28:00 AM

9/11/2024 11:28:00 AM

9/11/2024 11:28:00 AM

9/11/2024 11:28:00 AM

9/11/2024 11:28:00 AM

9/11/2024 11:28:00 AM

9/11/2024 11:28:00 AM

9/11/2024 11:28:00 AM

9/11/2024 11:28:00 AM

9/11/2024 11:28:00 AM

9/11/2024 11:28:00 AM

9/11/2024 11:28:00 AM

9/11/2024 11:28:00 AM

9/11/2024 11:28:00 AM

9/11/2024 11:28:00 AM

9/11/2024 11:28:00 AM

9/11/2024 11:28:00 AM

9/11/2024 11:28:00 AM

9/11/2024 11:28:00 AM

9/11/2024 11:28:00 AM

9/11/2024 11:28:00 AM

9/11/2024 11:28:00 AM

9/11/2024 11:28:00 AM

9/11/2024 11:28:00 AM

9/11/2024 11:28:00 AM

9/11/2024 11:28:00 AM

9/11/2024 11:28:00 AM

9/11/2024 11:28:00 AM

9/11/2024 11:28:00 AM

9/11/2024 11:28:00 AM

9/11/2024 11:28:00 AM

9/11/2024 11:28:00 AM

9/11/2024 11:28:00 AM

9/11/2024 11:28:00 AM

9/11/2024 11:28:00 AM

9/11/2024 11:28:00 AM

9/11/2024 11:28:00 AM

9/11/2024 11:28:00 AM

9/11/2024 11:28:00 AM

9/11/2024 11:28:00 AM

9/11/2024 11:28:00 AM

9/11/2024 11:28:00 AM

9/11/2024 11:28:00 AM

9/11/2024 11:28:00 AM

9/11/2024 11:28:00 AM

9/11/2024 11:28:00 AM

9/11/2024 11:28:00 AM

9/11/2024 11:28:00 AM

9/11/2024 11:28:00 AM

9/11/2024 11:28:00 AM

9/11/2024 11:28:00 AM

9/11/2024 11:28:00 AM

9/11/2024 11:28:00 AM

9/11/2024 11:28:00 AM

9/11/2024 11:28:00 AM

9/11/2024 11:28:00 AM

9/11/2024 11:28:00 AM

9/11/2024 11:28:00 AM

9/11/2024 11:28:00 AM

9/11/2024 11:28:00 AM

9/11/2024 11:28:00 AM

9/11/2024 11:28:00 AM

9/11/2024 11:28:00 AM

9/11/2024 11:28:00 AM

9/11/2024 11:28:00 AM

9/11/2024 11:28:00 AM

9/11/2024 11:28:00 AM

9/11/2024 11:28:00 AM

9/11/2024 11:28:00 AM

9/11/2024 11:28:00 AM

9/11/2024 11:28:00 AM

9/11/2024 11:28:00 AM

9/11/2024 11:28:00 AM

9/11/2024 11:28:00 AM

9/11/2024 11:28:00 AM

9/11/2024 11:28:00 AM

9/11/2024 11:28:00 AM

9/11/2024 11:28:00 AM

9/11/2024 11:28:00 AM

9/11/2024 11:28:00 AM

9/11/2024 11:28:00 AM

9/11/2024 11:28:00 AM

9/11/2024 11:28:00 AM

9/11/2024 11:28:00 AM

9/11/2024 11:28:00 AM

9/11/2024 11:28:00 AM

9/11/2024 11:28:00 AM

9/11/2024 11:28:00 AM

9/11/2024 11:28:00 AM

9/11/2024 11:28:00 AM

9/11/2024 11:28:00 AM

9/11/2024 11:28:00 AM

9/11/2024 11:28:00 AM

9/11/2024 11:28:00 AM

9/11/2024 11:28:00 AM

9/11/2024 11:28:00 AM

9/11/2024 11:28:00 AM

9/11/2024 11:28:00 AM

9/11/2024 11:28:00 AM

9/11/2024 11:28:00 AM

9/11/2024 11:28:00 AM

9/11/2024 11:28:00 AM

9/11/2024 11:28:00 AM

9/11/2024 11:28:00 AM

9/11/2024 11:28:00 AM

9/11/2024 11:28:00 AM

9/11/2024 11:28:00 AM

9/11/2024 11:28:00 AM

9/11/2024 11:28:00 AM

9/11/2024 11:28:00 AM

9/11/2024 11:28:00 AM

9/11/2024 11:28:00 AM

9/11/2024 11:28:00 AM

9/11/2024 11:28:00 AM

9/11/2024 11:28:00 AM

9/11/2024 11:28:00 AM

9/11/2024 11:28:00 AM

9/11/2024 11:28:00 AM

9/11/2024 11:28:00 AM

9/11/2024 11:28:00 AM

9/11/2024 11:28:00 AM

9/11/2024 11:28:00 AM

9/11/2024 11:28:00 AM

9/11/2024 11:28:00 AM

9/11/2024 11:28:00 AM

9/11/2024 11:28:00 AM

9/11/2024 11:28:00 AM

9/11/2024 11:28:00 AM

9/11/2024 11:28:00 AM

9/11/2024 11:28:00 AM

9/11/2024 11:28:00 AM

9/11/2024 11:28:00 AM

9/11/2024 11:28:00 AM

9/11/2024 11:28:00 AM

9/11/2024 11:28:00 AM

9/11/2024 11:28:00 AM

9/11/2024 11:28:00 AM

9/11/2024 11:28:00 AM

9/11/2024 11:28:00 AM

9/11/2024 11:28:00 AM

9/11/2024 11:28:00 AM

9/11/2024 11:28:00 AM

9/11/2024 11:28:00 AM

9/11/2024 11:28:00 AM

9/11/2024 11:28:00 AM

9/11/2024 11:28:00 AM

9/11/2024 11:28:00 AM

9/11/2024 11:28:00 AM

9/11/2024 11:28:00 AM

9/11/2024 11:28:00 AM

9/11/2024 11:28:00 AM

9/11/2024 11:28:00 AM

9/11/2024 11:28:00 AM

9/11/2024 11:28:00 AM

9/11/2024 11:28:00 AM

9/11/2024 11:28:00 AM

9/11/2024 11:28:00 AM

9/11/2024 11:28:00 AM

9/11/2024 11:28:00 AM

9/11/2024 11:28:00 AM

9/11/2024 11:28:00 AM

9/11/2024 11:28:00 AM

9/11/2024 11:28:00 AM

9/11/2024 11:28:00 AM

9/11/2024 11:28:00 AM

9/11/2024 11:28:00 AM

9/11/2024 11:28:00 AM

9/11/2024 11:28:00 AM

9/11/2024 11:28:00 AM

9/11/2024 11:28:00 AM

9/11/2024 11:28:00 AM

9/11/2024 11:28:00 AM

9/11/2024 11:28:00 AM

9/11/2024 11:28:00 AM

9/11/2024 11:28:00 AM

9/11/2024 11:28:00 AM

9/11/2024 11:28:00 AM

9/11/2024 11:28:00 AM

9/11/2024 11:28:00 AM

9/11/2024 11:28:00 AM

9/11/2024 11:28:00 AM

9/11/2024 11:28:00 AM

9/11/2024 11:28:00 AM

9/11/2024 11:28:00 AM

9/11/2024 11:28:00 AM

9/11/2024 11:28:00 AM

9/11/2024 11:28:00 AM

9/11/2024 11:28:00 AM

9/11/2024 11:28:00 AM

9/11/2024 11:28:00 AM

9/11/2024 11:28:00 AM

9/11/2024 11:28:00 AM

9/11/2024 11:28:00 AM

9/11/2024 11:28:00 AM

9/11/2024 11:28:00 AM

9/11/2024 11:28:00 AM

9/11/2024 11:28:00 AM

9/11/2024 11:28:00 AM

9/11/2024 11:28:00 AM

9/11/2024 11:28:00 AM

9/11/2024 11:28:00 AM

9/11/2024 11:28:00 AM

9/11/2024 11:28:00 AM

9/11/2024 11:28:00 AM

9/11/2024 11:28:00 AM

9/11/2024 11:28:00 AM

9/11/2024 11:28:00 AM

9/11/2024 11:28:00 AM

9/11/2024 11:28:00 AM

9/11/2024 11:28:00 AM

9/11/2024 11:28:00 AM

9/11/2024 11:28:00 AM

9/11/2024 11:28:00 AM

9/11/2024 11:28:00 AM

9/11/2024 11:28:00 AM

9/11/2024 11:28:00 AM

9/11/2024 11:28:00 AM

9/11/2024 11:28:00 AM

9/11/2024 11:28:00 AM

9/11/2024 11:28:00 AM

9/11/2024 11:28:00 AM

9/11/2024 11:28:00 AM

9/11/2024 11:28:00 AM

9/11/2024 11:28:00 AM

9/11/2024 11:28:00 AM

9/11/2024 11:28:00 AM

9/11/2024 11:28:00 AM

9/11/2024 11:28:00 AM

9/11/2024 11:28:00 AM

9/11/2024 11:28:00 AM

9/11/2024 11:28:00 AM

9/11/2024 11:28:00 AM

9/11/2024 11:28:00 AM

9/11/2024 11:28:00 AM

9/11/2024 11:28:00 AM

9/11/2024 11:28:00 AM

9/11/2024 11:28:00 AM

9/11/2024 11:28:00 AM

9/11/2024 11:28:00 AM

9/11/2024 11:28:00 AM

9/11/2024 11:28:00 AM

9/11/2024 11:28:00 AM

9/11/2024 11:28:00 AM

9/11/2024 11:28:00 AM

9/11/2024 11:28:00 AM

9/11/2024 11:28:00 AM

9/11/2024 11:28:00 AM

9/11/2024 11:28:00 AM

9/11/2024 11:28:00 AM

9/11/2024 11:28:00 AM

9/11/2024 11:28:00 AM

9/11/2024 11:28:00 AM

9/11/2024 11:28:00 AM

9/11/2024 11:28:00 AM

9/11/2024 11:28:00 AM

9/11/2024 11:28:00 AM

9/11/2024 11:28:00 AM

9/11/2024 11:28:00 AM

9/11/2024 11:28:00 AM

9/11/2024 11:28:00 AM

9/11/2024 11:28:00 AM

9/11/2024 11:28:00 AM

9/11/2024 11:28:00 AM

9/11/2024 11:28:00 AM

9/11/2024 11:28:00 AM

9/11/2024 11:28:00 AM

9/11/2024 11:28:00 AM

9/11/2024 11:28:00 AM

9/11/2024 11:28:00 AM

9/11/2024 11:28:00 AM

9/11/2024 11:28:00 AM

9/11/2024 11:28:00 AM

9/11/2024 11:28:00 AM

9/11/2024 11:28:00 AM

9/11/2024 11:28:00 AM

9/11/2024 11:28:00 AM

9/11/2024 11:28:00 AM

9/11/2024 11:28:00 AM

9/11/2024 11:28:00 AM

9/11/2024 11:28:00 AM

9/11/2024 11:28:00 AM

9/11/2024 11:28:00 AM

9/11/2024 11:28:00 AM

9/11/2024 11:28:00 AM

9/11/2024 11:28:00 AM

9/11/2024 11:28:00 AM

9/11/2024 11:28:00 AM

9/11/2024 11:28:00 AM

9/11/2024 11:28:00 AM

9/11/2024 11:28:00 AM

9/11/2024 11:28:00 AM

9/11/2024 11:28:00 AM

9/11/2024 11:28:00 AM

9/11/2024 11:28:00 AM

9/11/2024 11:28:00 AM

9/11/2024 11:28:00 AM

9/11/2024 11:28:00 AM

9/11/2024 11:28:00 AM

9/11/2024 11:28:00 AM

9/11/2024 11:28:00 AM

9/11/2024 11:28:00 AM

9/11/2024 11:28:00 AM

9/11/2024 11:28:00 AM

9/11/2024 11:28:00 AM

9/11/2024 11:28:00 AM

9/11/2024 11:28:00 AM

9/11/2024 11:28:00 AM

9/11/2024 11:28:00 AM

9/11/2024 11:28:00 AM

9/11/2024 11:28:00 AM

9/11/2024 11:28:00 AM

9/11/2024 11:28:00 AM

9/11/2024 11:28:00 AM

9/11/2024 11:28:00 AM

9/11/2024 11:28:00 AM

9/11/2024 11:28:00 AM

9/11/2024 11:28:00 AM

9/11/2024 11:28:00 AM

9/11/2024 11:28:00 AM

9/11/2024 11:28:00 AM

9/11/2024 11:28:00 AM

9/11/2024 11:28:00 AM

9/11/2024 11:28:00 AM

9/11/2024 11:28:00 AM

9/11/2024 11:28:00 AM

9/11/2024 11:28:00 AM

9/11/2024 11:28:00 AM

9/11/2024 11:28:00 AM

9/11/2024 11:28:00 AM

9/11/2024 11:28:00 AM

9/11/2024 11:28:00 AM

9/11/2024 11:28:00 AM

9/11/2024 11:28:00 AM

9/11/2024 11:28:00 AM

9/11/2024 11:28:00 AM

9/11/2024 11:28:00 AM

9/11/2024 11:28:00 AM

9/11/2024 11:28:00 AM

9/11/2024 11:28:00 AM

9/11/2024 11:28:00 AM

9/11/2024 11:28:00 AM

9/11/2024 11:28:00 AM

9/11/2024 11:28:00 AM

9/11/2024 11:28:00 AM

9/11/2024 11:28:00 AM

9/11/2024 11:28:00 AM

9/11/2024 11:28:00 AM

9/11/2024 11:28:00 AM

9/11/2024 11:28:00 AM

9/11/2024 11:28:00 AM

9/11/2024 11:28:00 AM

9/11/2024 11:28:00 AM

9/11/2024 11:28:00 AM

9/11/2024 11:28:00 AM

9/11/2024 11:28:00 AM

9/11/2024 11:28:00 AM

9/11/2024 11:28:00 AM

9/11/2024 11:28:00 AM

9/11/2024 11:28:00 AM

9/11/2024 11:28:00 AM

9/11/2024 11:28:00 AM

9/11/2024 11:28:00 AM

9/11/2024 11:28:00 AM

9/11/2024 11:28:00 AM

9/11/2024 11:28:00 AM

9/11/2024 11:28:00 AM

9/11/2024 11:28:00 AM

9/11/2024 11:28:00 AM

9/11/2024 11:28:00 AM

9/11/2024 11:28:00 AM

9/11/2024 11:28:00 AM

9/11/2024 11:28:00 AM

9/11/2024 11:28:00 AM

9/11/2024 11:28:00 AM

9/11/2024 11:28:00 AM

9/11/2024 11:28:00 AM

9/11/2024 11:28:00 AM

9/11/2024 11:28:00 AM

9/11/2024 11:28:00 AM

9/11/2024 11:28:00 AM

9/11/2024 11:28:00 AM

9/11/2024 11:28:00 AM

9/11/2024 11:28:00 AM

9/11/2024 11:28:00 AM

9/11/2024 11:28:00 AM

9/11/2024 11:28:00 AM

9/11/2024 11:28:00 AM

9/11/2024 11:28:00 AM

9/11/2024 11:28:00 AM

9/11/2024 11:28:00 AM

9/11/2024 11:28:00 AM

9/11/2024 11:28:00 AM

9/11/2024 11:28:00 AM

9/11/2024 11:28:00 AM

9/11/2024 11:28:00 AM

9/11/2024 11:28:00 AM

9/11/2024 11:28:00 AM

9/11/2024 11:28:00 AM

9/11/2024 11:28:00 AM

9/11/2024 11:28:00 AM

9/11/2024 11:28:00 AM

9/11/2024 11:28:00 AM

9/11/2024 11:28:00 AM

9/11/2024 11:28:00 AM

9/11/2024 11:28:00 AM

9/11/2024 11:28:00 AM

9/11/2024 11:28:00 AM

9/11/2024 11:28:00 AM

9/11/2024 11:28:00 AM

9/11/2024 11:28:00 AM

9/11/2024 11:28:00 AM

9/11/2024 11:28:00 AM

9/11/2024 11:28:00 AM

9/11/2024 11:28:00 AM

9/11/2024 11:28:00 AM

9/11/2024 11:28:00 AM

9/11/2024 11:28:00 AM

9/11/2024 11:28:00 AM

9/11/2024 11:28:00 AM

9/11/2024 11:28:00 AM

9/11/2024 11:28:00 AM

9/11/2024 11:28:00 AM

9/11/2024 11:28:00 AM

9/11/2024 11:28:00 AM

9/11/2024 11:28:00 AM

9/11/2024 11:28:00 AM

9/11/2024 11:28:00 AM

9/11/2024 11:28:00 AM

9/11/2024 11:28:00 AM

9/11/2024 11:28:00 AM

9/11/2024 11:28:00 AM

9/11/2024 11:28:00 AM

9/11/2024 11:28:00 AM

9/11/2024 11:28:00 AM

9/11/2024 11:28:00 AM

9/11/2024 11:28:00 AM

9/11/2024 11:28:00 AM

9/11/2024 11:28:00 AM

9/11/2024 11:28:00 AM

9/11/2024 11:28:00 AM

9/11/2024 11:28:00 AM

9/11/2024 11:28:00 AM

9/11/2024 11:28:00 AM

9/11/2024 11:28:00 AM

9/11/2024 11:28:00 AM

9/11/2024 11:28:00 AM

9/11/2024 11:28:00 AM

9/11/2024 11:28:00 AM

9/11/2024 11:28:00 AM

9/11/2024 11:28:00 AM

9/11/2024 11:28:00 AM

9/11/2024 11:28:00 AM

9/11/2024 11:28:00 AM

9/11/2024 11:28:00 AM

9/11/2024 11:28:00 AM

9/11/2024 11:28:00 AM

9/11/2024 11:28:00 AM

9/11/2024 11:28:00 AM

9/11/2024 11:28:00 AM

9/11/2024 11:28:00 AM

9/11/2024 11:28:00 AM

9/11/2024 11:28:00 AM

9/11/2024 11:28:00 AM

9/11/2024 11:28:00 AM

9/11/2024 11:28:00 AM

9/11/2024 11:28:00 AM

9/11/2024 11:28:00 AM

9/11/2024 11:28:00 AM

9/11/2024 11:28:00 AM

9/11/2024 11:28:00 AM

9/11/2024 11:28:00 AM

9/11/2024 11:28:00 AM

9/11/2024 11:28:00 AM

9/11/2024 11:28:00 AM

9/11/2024 11:28:00 AM

9/11/2024 11:28:00 AM

9/11/2024 11:28:00 AM

9/11/2024 11:28:00 AM

9/11/2024 11:28:00 AM

9/11/2024 11:28:00 AM

9/11/2024 11:28:00 AM

9/11/2024 11:28:00 AM

9/11/2024 11:28:00 AM

9/11/2024 11:28:00 AM

9/11/2024 11:28:00 AM

9/11/2024 11:28:00 AM

9/11/2024 11:28:00 AM

9/11/2024 11:28:00 AM

9/11/2024 11:28:00 AM

9/11/2024 11:28:00 AM

9/11/2024 11:28:00 AM

9/11/2024 11:28:00 AM

9/11/2024 11:28:00 AM

9/11/2024 11:28:00 AM

9/11/2024 11:28:00 AM

9/11/2024 11:28:00 AM

9/11/2024 11:28:00 AM

9/11/2024 11:28:00 AM

9/11/2024 11:28:00 AM

9/11/2024 11:28:00 AM

9/11/2024 11:28:00 AM

9/11/2024 11:28:00 AM

9/11/2024 11:28:00 AM

9/11/2024 11:28:00 AM

9/11/2024 11:28:00 AM

9/11/2024 11:28:00 AM

9/11/2024 11:28:00 AM

9/11/2024 11:28:00 AM

9/11/2024 11:28:00 AM

9/11/2024 11:28:00 AM

9/11/2024 11:28:00 AM

9/11/2024 11:28:00 AM

9/11/2024 11:28:00 AM

9/11/2024 11:28:00 AM

9/11/2024 11:28:00 AM

9/11/2024 11:28:00 AM

9/11/2024 11:28:00 AM

9/11/2024 11:28:00 AM

9/11/2024 11:28:00 AM

9/11/2024 11:28:00 AM

9/11/2024 11:28:00 AM

9/11/2024 11:28:00 AM

9/11/2024 11:28:00 AM

9/11/2024 11:28:00 AM

9/11/2024 11:28:00 AM

9/11/2024 11:28:00 AM

9/11/2024 11:28:00 AM

9/11/2024 11:28:00 AM

9/11/2024 11:28:00 AM

9/11/2024 11:28:00 AM

9/11/2024 11:28:00 AM

9/11/2024 11:28:00 AM

9/11/2024 11:28:00 AM

9/11/2024 11:28:00 AM

9/11/2024 11:28:00 AM

9/11/2024 11:28:00 AM

9/11/2024 11:28:00 AM

9/11/2024 11:28:00 AM

9/11/2024 11:28:00 AM

9/11/2024 11:28:00 AM

9/11/2024 11:28:00 AM

9/11/2024 11:28:00 AM

9/11/2024 11:28:00 AM

9/11/2024 11:28:00 AM

9/11/2024 11:28:00 AM

9/11/2024 11:28:00 AM

9/11/2024 11:28:00 AM

9/11/2024 11:28:00 AM

9/11/2024 11:28:00 AM

9/11/2024 11:28:00 AM

9/11/2024 11:28:00 AM

9/11/2024 11:28:00 AM

9/11/2024 11:28:00 AM

9/11/2024 11:28:00 AM

9/11/2024 11:28:00 AM

9/11/2024 11:28:00 AM

9/11/2024 11:28:00 AM

9/11/2024 11:28:00 AM

9/11/2024 11:28:00 AM

9/11/2024 11:28:00 AM

9/11/2024 11:28:00 AM

9/11/2024 11:28:00 AM

9/11/2024 11:28:00 AM

9/11/2024 11:28:00 AM

9/11/2024 11:28:00 AM

9/11/2024 11:28:00 AM

9/11/2024 11:28:00 AM

9/11/2024 11:28:00 AM

9/11/2024 11:28:00 AM

9/11/2024 11:28:00 AM

9/11/2024 11:28:00 AM

9/11/2024 11:28:00 AM

9/11/2024 11:28:00 AM

9/11/2024 11:28:00 AM

9/11/2024 11:28:00 AM

9/11/2024 11:28:00 AM

9/11/2024 11:28:00 AM

9/11/2024 11:28:00 AM

9/11/2024 11:28:00 AM

9/11/2024 11:28:00 AM

9/11/2024 11:28:00 AM

9/11/2024 11:28:00 AM

9/11/2024 11:28:00 AM

9/11/2024 11:28:00 AM

9/11/2024 11:28:00 AM

9/11/2024 11:28:00 AM

9/11/2024 11:28:00 AM

9/11/2024 11:28:00 AM

9/11/2024 11:28:00 AM

9/11/2024 11:28:00 AM

9/11/2024 11:28:00 AM

9/11/2024 11:28:00 AM

9/11/2024 11:28:00 AM

9/11/2024 11:28:00 AM

9/11/2024 11:28:00 AM

9/11/2024 11:28:00 AM

9/11/2024 11:28:00 AM

9/11/2024 11:28:00 AM

9/11/2024 11:28:00 AM

9/11/2024 11:28:00 AM

9/11/2024 11:28:00 AM

9/11/2024 11:28:00 AM

9/11/2024 11:28:00 AM

9/11/2024 11:28:00 AM

9/11/2024 11:28:00 AM

9/11/2024 11:28:00 AM

9/11/2024 11:28:00 AM

9/11/2024 11:28:00 AM

9/11/2024 11:28:00 AM

9/11/2024 11:28:00 AM

9/11/2024 11:28:00 AM

9/11/2024 11:28:00 AM

9/11/2024 11:28:00 AM

9/11/2024 11:28:00 AM

9/11/2024 11:28:00 AM

9/11/2024 11:28:00 AM

9/11/2024 11:28:00 AM

9/11/2024 11:28:00 AM

9/11/2024 11:28:00 AM

9/11/2024 11:28:00 AM

9/11/2024 11:28:00 AM

9/11/2024 11:28:00 AM

9/11/2024 11:28:00 AM

9/11/2024 11:28:00 AM

9/11/2024 11:28:00 AM

9/11/2024 11:28:00 AM

9/11/2024 11:28:00 AM

9/11/2024 11:28:00 AM

9/11/2024 11:28:00 AM

9/11/2024 11:28:00 AM

9/11/2024 11:28:00 AM

9/11/2024 11:28:00 AM

9/11/2024 11:28:00 AM

9/11/2024 11:28:00 AM

9/11/2024 11:28:00 AM

9/11/2024 11:28:00 AM

9/11/2024 11:28:00 AM

9/11/2024 11:28:00 AM

9/11/2024 11:28:00 AM

9/11/2024 11:28:00 AM

9/11/2024 11:28:00 AM

9/11/2024 11:28:00 AM

9/11/2024 11:28:00 AM

9/11/2024 11:28:00 AM

9/11/2024 11:28:00 AM

9/11/2024 11:28:00 AM

9/11/2024 11:28:00 AM

9/11/2024 11:28:00 AM

9/11/2024 11:28:00 AM

9/11/2024 11:28:00 AM

9/11/2024 11:28:00 AM

9/11/2024 11:28:00 AM

9/11/2024 11:28:00 AM

9/11/2024 11:28:00 AM

9/11/2024 11:28:00 AM

9/11/2024 11:28:00 AM

9/11/2024 11:28:00 AM

9/11/2024 11:28:00 AM

9/11/2024 11:28:00 AM

9/11/2024 11:28:00 AM

9/11/2024 11:28:00 AM

9/11/2024 11:28:00 AM

9/11/2024 11:28:00 AM

9/11/2024 11:28:00 AM

9/11/2024 11:28:00 AM

9/11/2024 11:28:00 AM

9/11/2024 11:28:00 AM

9/11/2024 11:28:00 AM

9/11/2024 11:28:00 AM

9/11/2024 11:28:00 AM

9/11/2024 11:28:00 AM

9/11/2024 11:28:00 AM

9/11/2024 11:28:00 AM

9/11/2024 11:28:00 AM

9/11/2024 11:28:00 AM

9/11/2024 11:28:00 AM

9/11/2024 11:28:00 AM

9/11/2024 11:28:00 AM

9/11/2024 11:28:00 AM

9/11/2024 11:28:00 AM

9/11/2024 11:28:00 AM

9/11/2024 11:28:00 AM

9/11/2024 11:28:00 AM

9/11/2024 11:28:00 AM

9/11/2024 11:28:00 AM

9/11/2024 11:28:00 AM

9/11/2024 11:28:00 AM

9/11/2024 11:28:00 AM

9/11/2024 11:28:00 AM

9/11/2024 11:28:00 AM

9/11/2024 11:28:00 AM

9/11/2024 11:28:00 AM

9/11/2024 11:28:00 AM

9/11/2024 11:28:00 AM

9/11/2024 11:28:00 AM

9/11/2024 11:28:00 AM

9/11/2024 11:28:00 AM

9/11/2024 11:28:00 AM

9/11/2024 11:28:00 AM

9/11/2024 11:28:00 AM

9/11/2024 11:28:00 AM

9/11/2024 11:28:00 AM

9/11/2024 11:28:00 AM

9/11/2024 11:28:00 AM

9/11/2024 11:28:00 AM

9/11/2024 11:28:00 AM

9/11/2024 11:28:00 AM

9/11/2024 11:28:00 AM

9/11/2024 11:28:00 AM

9/11/2024 11:28:00 AM

9/11/2024 11:28:00 AM

9/11/2024 11:28:00 AM

9/11/2024 11:28:00 AM

9/11/2024 11:28:00 AM

9/11/2024 11:28:00 AM

9/11/2024 11:28:00 AM

9/11/2024 11:28:00 AM

9/11/2024 11:28:00 AM

9/11/2024 11:28:00 AM

9/11/2024 11:28:00 AM

9/11/2024 11:28:00 AM

9/11/2024 11:28:00 AM

9/11/2024 11:28:00 AM

9/11/2024 11:28:00 AM

9/11/2024 11:28:00 AM

9/11/2024 11:28:00 AM

9/11/2024 11:28:00 AM

9/11/2024 11:28:00 AM

9/11/2024 11:28:00 AM

pt, Raised by 4.5 pt

9/11/2024 11:28:00 AM

pt, Raised by 4.5 pt

9/11/2024 11:28:00 AM

pt, Raised by 4.5 pt

pt, Raised by 4.5 pt

9/11/2024 11:28:00 AM

pt, Raised by 4.5 pt

9/11/2024 11:28:00 AM

pt, Raised by 4.5 pt

9/11/2024 11:28:00 AM

pt, Raised by 4.5 pt

9/11/2024 11:28:00 AM

pt, Raised by 4.5 pt

9/11/2024 11:28:00 AM

pt, Raised by 4.5 pt

9/11/2024 11:28:00 AM

pt, Raised by 4.5 pt

9/11/2024 11:28:00 AM

pt, Raised by 4.5 pt

9/11/2024 11:28:00 AM

pt, Raised by 4.5 pt

9/11/2024 11:28:00 AM

9/11/2024 11:28:00 AM

9/11/2024 11:28:00 AM

9/11/2024 11:28:00 AM

9/11/2024 11:28:00 AM

9/11/2024 11:28:00 AM

9/11/2024 11:28:00 AM

9/11/2024 11:28:00 AM

9/11/2024 11:28:00 AM

9/11/2024 11:28:00 AM

9/11/2024 11:28:00 AM

9/11/2024 11:28:00 AM

9/11/2024 11:28:00 AM

9/11/2024 11:28:00 AM

9/11/2024 11:28:00 AM

9/11/2024 11:28:00 AM

9/11/2024 11:28:00 AM

9/11/2024 11:28:00 AM

9/11/2024 11:28:00 AM

9/11/2024 11:28:00 AM

9/11/2024 11:28:00 AM

9/11/2024 11:28:00 AM

9/11/2024 11:28:00 AM

9/11/2024 11:28:00 AM

9/11/2024 11:28:00 AM

9/11/2024 11:28:00 AM

9/11/2024 11:28:00 AM

9/11/2024 11:28:00 AM

9/11/2024 11:28:00 AM

9/11/2024 11:28:00 AM

9/11/2024 11:28:00 AM

9/11/2024 11:28:00 AM

9/11/2024 11:28:00 AM

9/11/2024 11:28:00 AM

9/11/2024 11:28:00 AM

9/11/2024 11:28:00 AM

9/11/2024 11:28:00 AM

9/11/2024 11:28:00 AM

9/11/2024 11:28:00 AM

9/11/2024 11:28:00 AM

9/11/2024 11:28:00 AM

9/11/2024 11:28:00 AM

9/11/2024 11:28:00 AM

9/11/2024 11:28:00 AM

9/11/2024 11:28:00 AM

9/11/2024 11:28:00 AM

9/11/2024 11:28:00 AM

9/11/2024 11:28:00 AM

9/11/2024 11:28:00 AM

9/11/2024 11:28:00 AM

9/11/2024 11:28:00 AM

9/11/2024 11:28:00 AM

9/11/2024 11:28:00 AM

9/11/2024 11:28:00 AM

9/11/2024 11:28:00 AM

9/11/2024 11:28:00 AM

9/11/2024 11:28:00 AM

9/11/2024 11:28:00 AM

9/11/2024 11:28:00 AM

9/11/2024 11:28:00 AM

9/11/2024 11:28:00 AM

9/11/2024 11:28:00 AM

9/11/2024 11:28:00 AM

9/11/2024 11:28:00 AM

9/11/2024 11:28:00 AM

9/11/2024 11:28:00 AM

9/11/2024 11:28:00 AM

9/11/2024 11:28:00 AM

9/11/2024 11:28:00 AM

9/11/2024 11:28:00 AM

9/11/2024 11:28:00 AM

9/11/2024 11:28:00 AM

9/11/2024 11:28:00 AM

9/11/2024 11:28:00 AM

9/11/2024 11:28:00 AM

9/11/2024 11:28:00 AM

9/11/2024 11:28:00 AM

9/11/2024 11:28:00 AM

9/11/2024 11:28:00 AM

9/11/2024 11:28:00 AM

9/11/2024 11:28:00 AM

9/11/2024 11:28:00 AM

9/11/2024 11:28:00 AM

9/11/2024 11:28:00 AM

9/11/2024 11:28:00 AM

9/11/2024 11:28:00 AM

9/11/2024 11:28:00 AM

9/11/2024 11:28:00 AM

9/11/2024 11:28:00 AM

9/11/2024 11:28:00 AM

9/11/2024 11:28:00 AM

9/11/2024 11:28:00 AM

9/11/2024 11:28:00 AM

9/11/2024 11:28:00 AM

9/11/2024 11:28:00 AM

9/11/2024 11:28:00 AM

9/11/2024 11:28:00 AM

9/11/2024 11:28:00 AM

9/11/2024 11:28:00 AM

9/11/2024 11:28:00 AM

9/11/2024 11:28:00 AM

9/11/2024 11:28:00 AM

9/11/2024 11:28:00 AM

9/11/2024 11:28:00 AM

9/11/2024 11:28:00 AM

9/11/2024 11:28:00 AM

9/11/2024 11:28:00 AM

9/11/2024 11:28:00 AM

9/11/2024 11:28:00 AM

9/11/2024 11:28:00 AM

9/11/2024 11:28:00 AM

9/11/2024 11:28:00 AM

9/11/2024 11:28:00 AM

9/11/2024 11:28:00 AM

9/11/2024 11:28:00 AM

9/11/2024 11:28:00 AM

9/11/2024 11:28:00 AM

9/11/2024 11:28:00 AM

9/11/2024 11:28:00 AM

9/11/2024 11:28:00 AM

9/11/2024 11:28:00 AM

9/11/2024 11:28:00 AM

9/11/2024 11:28:00 AM

9/11/2024 11:28:00 AM

9/11/2024 11:28:00 AM

9/11/2024 11:28:00 AM

9/11/2024 11:28:00 AM

9/11/2024 11:28:00 AM

9/11/2024 11:28:00 AM

9/11/2024 11:28:00 AM

9/11/2024 11:28:00 AM

9/11/2024 11:28:00 AM

9/11/2024 11:28:00 AM

9/11/2024 11:28:00 AM

9/11/2024 11:28:00 AM

9/11/2024 11:28:00 AM

9/11/2024 11:28:00 AM

9/11/2024 11:28:00 AM

9/11/2024 11:28:00 AM

9/11/2024 11:28:00 AM

9/11/2024 11:28:00 AM

9/11/2024 11:28:00 AM

9/11/2024 11:28:00 AM

9/11/2024 11:28:00 AM

9/11/2024 11:28:00 AM

9/11/2024 11:28:00 AM

9/11/2024 11:28:00 AM

9/11/2024 11:28:00 AM

9/11/2024 11:28:00 AM

9/11/2024 11:28:00 AM

9/11/2024 11:28:00 AM

9/11/2024 11:28:00 AM

9/11/2024 11:28:00 AM

9/11/2024 11:28:00 AM

9/11/2024 11:28:00 AM

9/11/2024 11:28:00 AM

9/11/2024 11:28:00 AM

9/11/2024 11:28:00 AM

9/11/2024 11:28:00 AM

9/11/2024 11:28:00 AM

9/11/2024 11:28:00 AM

9/11/2024 11:28:00 AM

9/11/2024 11:28:00 AM

9/11/2024 11:28:00 AM

9/11/2024 11:28:00 AM

9/11/2024 11:28:00 AM

9/11/2024 11:28:00 AM

9/11/2024 11:28:00 AM

9/11/2024 11:28:00 AM

9/11/2024 11:28:00 AM

9/11/2024 11:28:00 AM

9/11/2024 11:28:00 AM

9/11/2024 11:28:00 AM

9/11/2024 11:28:00 AM

9/11/2024 11:28:00 AM

9/11/2024 11:28:00 AM

9/11/2024 11:28:00 AM

9/11/2024 11:28:00 AM

9/11/2024 11:28:00 AM

9/11/2024 11:28:00 AM

9/11/2024 11:28:00 AM

9/11/2024 11:28:00 AM

9/11/2024 11:28:00 AM

9/11/2024 11:28:00 AM

9/11/2024 11:28:00 AM

9/11/2024 11:28:00 AM

9/11/2024 11:28:00 AM

9/11/2024 11:28:00 AM

9/11/2024 11:28:00 AM

9/11/2024 11:28:00 AM

9/11/2024 11:28:00 AM

9/11/2024 11:28:00 AM

9/11/2024 11:28:00 AM

9/11/2024 11:28:00 AM

9/11/2024 11:28:00 AM

9/11/2024 11:28:00 AM

9/11/2024 11:28:00 AM

9/11/2024 11:28:00 AM

9/11/2024 11:28:00 AM

9/11/2024 11:28:00 AM

9/11/2024 11:28:00 AM

9/11/2024 11:28:00 AM

9/11/2024 11:28:00 AM

9/11/2024 11:28:00 AM

9/11/2024 11:28:00 AM

9/11/2024 11:28:00 AM

9/11/2024 11:28:00 AM

9/11/2024 11:28:00 AM

9/11/2024 11:28:00 AM

9/11/2024 11:28:00 AM

9/11/2024 11:28:00 AM

9/11/2024 11:28:00 AM

9/11/2024 11:28:00 AM

9/11/2024 11:28:00 AM

9/11/2024 11:28:00 AM

9/11/2024 11:28:00 AM

9/11/2024 11:28:00 AM

9/11/2024 11:28:00 AM

9/11/2024 11:28:00 AM

9/11/2024 11:28:00 AM

9/11/2024 11:28:00 AM

9/11/2024 11:28:00 AM

9/11/2024 11:28:00 AM

9/11/2024 11:28:00 AM

9/11/2024 11:28:00 AM

9/11/2024 11:28:00 AM

9/11/2024 11:28:00 AM

9/11/2024 11:28:00 AM

9/11/2024 11:28:00 AM

9/11/2024 11:28:00 AM

9/11/2024 11:28:00 AM

9/11/2024 11:28:00 AM

9/11/2024 11:28:00 AM

9/11/2024 11:28:00 AM

9/11/2024 11:28:00 AM

9/11/2024 11:28:00 AM

9/11/2024 11:28:00 AM

9/11/2024 11:28:00 AM

9/11/2024 11:28:00 AM

9/11/2024 11:28:00 AM

9/11/2024 11:28:00 AM

9/11/2024 11:28:00 AM

9/11/2024 11:28:00 AM

9/11/2024 11:28:00 AM

9/11/2024 11:28:00 AM

9/11/2024 11:28:00 AM

9/11/2024 11:28:00 AM

9/11/2024 11:28:00 AM

9/11/2024 11:28:00 AM

9/11/2024 11:28:00 AM

9/11/2024 11:28:00 AM

9/11/2024 11:28:00 AM

9/11/2024 11:28:00 AM

9/11/2024 11:28:00 AM

9/11/2024 11:28:00 AM

9/11/2024 11:28:00 AM

9/11/2024 11:28:00 AM

9/11/2024 11:28:00 AM

9/11/2024 11:28:00 AM

9/11/2024 11:28:00 AM

9/11/2024 11:28:00 AM

9/11/2024 11:28:00 AM

9/11/2024 11:28:00 AM

9/11/2024 11:28:00 AM

9/11/2024 11:28:00 AM

9/11/2024 11:28:00 AM

9/11/2024 11:28:00 AM

9/11/2024 11:28:00 AM

9/11/2024 11:28:00 AM

9/11/2024 11:28:00 AM

9/11/2024 11:28:00 AM

9/11/2024 11:28:00 AM

9/11/2024 11:28:00 AM

9/11/2024 11:28:00 AM

9/11/2024 11:28:00 AM

9/11/2024 11:28:00 AM

9/11/2024 11:28:00 AM

9/11/2024 11:28:00 AM

9/11/2024 11:28:00 AM

9/11/2024 11:28:00 AM

9/11/2024 11:28:00 AM

9/11/2024 11:28:00 AM

9/11/2024 11:28:00 AM

9/11/2024 11:28:00 AM

9/11/2024 11:28:00 AM

9/11/2024 11:28:00 AM

9/11/2024 11:28:00 AM

9/11/2024 11:28:00 AM

9/11/2024 11:28:00 AM

9/11/2024 11:28:00 AM

9/11/2024 11:28:00 AM

9/11/2024 11:28:00 AM

9/11/2024 11:28:00 AM

9/11/2024 11:28:00 AM

9/11/2024 11:28:00 AM

9/11/2024 11:28:00 AM

9/11/2024 11:28:00 AM

9/11/2024 11:28:00 AM

9/11/2024 11:28:00 AM

9/11/2024 11:28:00 AM

9/11/2024 11:28:00 AM

9/11/2024 11:28:00 AM

9/11/2024 11:28:00 AM

9/11/2024 11:28:00 AM

9/11/2024 11:28:00 AM

9/11/2024 11:28:00 AM

9/11/2024 11:28:00 AM

9/11/2024 11:28:00 AM

9/11/2024 11:28:00 AM

9/11/2024 11:28:00 AM

9/11/2024 11:28:00 AM

9/11/2024 11:28:00 AM

9/11/2024 11:28:00 AM

9/11/2024 11:28:00 AM

9/11/2024 11:28:00 AM

9/11/2024 11:28:00 AM

9/11/2024 11:28:00 AM

9/11/2024 11:28:00 AM

9/11/2024 11:28:00 AM

9/11/2024 11:28:00 AM

9/11/2024 11:28:00 AM

9/11/2024 11:28:00 AM

9/11/2024 11:28:00 AM

9/11/2024 11:28:00 AM

9/11/2024 11:28:00 AM

9/11/2024 11:28:00 AM

9/11/2024 11:28:00 AM

9/11/2024 11:28:00 AM

9/11/2024 11:28:00 AM

9/11/2024 11:28:00 AM

9/11/2024 11:28:00 AM

9/11/2024 11:28:00 AM

9/11/2024 11:28:00 AM

9/11/2024 11:28:00 AM

9/11/2024 11:28:00 AM

9/11/2024 11:28:00 AM

9/11/2024 11:28:00 AM

9/11/2024 11:28:00 AM

9/11/2024 11:28:00 AM

9/11/2024 11:28:00 AM

9/11/2024 11:28:00 AM

9/11/2024 11:28:00 AM

9/11/2024 11:28:00 AM

9/11/2024 11:28:00 AM

9/11/2024 11:28:00 AM

9/11/2024 11:28:00 AM

9/11/2024 11:28:00 AM

9/11/2024 11:28:00 AM

9/11/2024 11:28:00 AM

9/11/2024 11:28:00 AM

9/11/2024 11:28:00 AM

9/11/2024 11:28:00 AM

9/11/2024 11:28:00 AM

9/11/2024 11:28:00 AM

9/11/2024 11:28:00 AM

9/11/2024 11:28:00 AM

9/11/2024 11:28:00 AM

9/11/2024 11:28:00 AM

9/11/2024 11:28:00 AM

9/11/2024 11:28:00 AM

9/11/2024 11:28:00 AM

9/11/2024 11:28:00 AM

9/11/2024 11:28:00 AM

9/11/2024 11:28:00 AM

9/11/2024 11:28:00 AM

9/11/2024 11:28:00 AM

9/11/2024 11:28:00 AM

9/11/2024 11:28:00 AM

9/11/2024 11:28:00 AM

9/11/2024 11:28:00 AM

9/11/2024 11:28:00 AM

9/11/2024 11:28:00 AM

9/11/2024 11:28:00 AM

9/11/2024 11:28:00 AM

9/11/2024 11:28:00 AM

9/11/2024 11:28:00 AM

9/11/2024 11:28:00 AM

9/11/2024 11:28:00 AM

9/11/2024 11:28:00 AM

9/11/2024 11:28:00 AM

9/11/2024 11:28:00 AM

9/11/2024 11:28:00 AM

9/11/2024 11:28:00 AM

9/11/2024 11:28:00 AM

9/11/2024 11:28:00 AM

9/11/2024 11:28:00 AM

9/11/2024 11:28:00 AM

9/11/2024 11:28:00 AM

9/11/2024 11:28:00 AM

9/11/2024 11:28:00 AM

9/11/2024 11:28:00 AM

9/11/2024 11:28:00 AM

9/11/2024 11:28:00 AM

9/11/2024 11:28:00 AM

9/11/2024 11:28:00 AM

9/11/2024 11:28:00 AM

9/11/2024 11:28:00 AM

9/11/2024 11:28:00 AM

9/11/2024 11:28:00 AM

9/11/2024 11:28:00 AM

9/11/2024 11:28:00 AM

9/11/2024 11:28:00 AM

9/11/2024 11:28:00 AM

9/11/2024 11:28:00 AM

9/11/2024 11:28:00 AM

9/11/2024 11:28:00 AM

9/11/2024 11:28:00 AM

9/11/2024 11:28:00 AM

9/11/2024 11:28:00 AM

9/11/2024 11:28:00 AM

9/11/2024 11:28:00 AM

9/11/2024 11:28:00 AM

9/11/2024 11:28:00 AM

9/11/2024 11:28:00 AM

9/11/2024 11:28:00 AM

9/11/2024 11:28:00 AM

9/11/2024 11:28:00 AM

9/11/2024 11:28:00 AM

9/11/2024 11:28:00 AM

9/11/2024 11:28:00 AM

9/11/2024 11:28:00 AM

9/11/2024 11:28:00 AM

9/11/2024 11:28:00 AM

9/11/2024 11:28:00 AM

9/11/2024 11:28:00 AM

9/11/2024 11:28:00 AM

9/11/2024 11:28:00 AM

9/11/2024 11:28:00 AM

9/11/2024 11:28:00 AM

9/11/2024 11:28:00 AM

9/11/2024 11:28:00 AM

9/11/2024 11:28:00 AM

9/11/2024 11:28:00 AM

9/11/2024 11:28:00 AM

9/11/2024 11:28:00 AM

9/11/2024 11:28:00 AM

9/11/2024 11:28:00 AM

9/11/2024 11:28:00 AM

9/11/2024 11:28:00 AM

9/11/2024 11:28:00 AM

9/11/2024 11:28:00 AM

9/11/2024 11:28:00 AM

9/11/2024 11:28:00 AM

9/11/2024 11:28:00 AM

9/11/2024 11:28:00 AM

9/11/2024 11:28:00 AM

9/11/2024 11:28:00 AM

9/11/2024 11:28:00 AM

9/11/2024 11:28:00 AM

9/11/2024 11:28:00 AM

9/11/2024 11:28:00 AM

9/11/2024 11:28:00 AM

9/11/2024 11:28:00 AM

9/11/2024 11:28:00 AM

9/11/2024 11:28:00 AM

9/11/2024 11:28:00 AM

9/11/2024 11:28:00 AM

9/11/2024 11:28:00 AM

9/11/2024 11:28:00 AM

pt, Raised by 4.5 pt

9/11/2024 11:28:00 AM

pt, Raised by 4.5 pt

9/11/2024 11:28:00 AM

pt, Raised by 4.5 pt

9/11/2024 11:28:00 AM

pt, Raised by 4.5 pt

9/11/2024 11:28:00 AM

pt, Raised by 4.5 pt

9/11/2024 11:28:00 AM

pt, Raised by 4.5 pt

9/11/2024 11:28:00 AM

pt, Raised by 4.5 pt

9/11/2024 11:28:00 AM

pt, Raised by 4.5 pt

9/11/2024 11:28:00 AM

pt, Raised by 4.5 pt

9/11/2024 11:28:00 AM

9/11/2024 11:28:00 AM

pt, Raised by 4.5 pt

9/11/2024 11:28:00 AM

pt, Raised by 4.5 pt

9/11/2024 11:28:00 AM

pt, Raised by 4.5 pt

9/11/2024 11:28:00 AM

pt, Raised by 4.5 pt

9/11/2024 11:28:00 AM

pt, Raised by 4.5 pt

9/11/2024 11:28:00 AM

pt, Raised by 4.5 pt

9/11/2024 11:28:00 AM

pt, Raised by 4.5 pt

9/11/2024 11:28:00 AM

9/11/2024 11:28:00 AM

9/11/2024 11:28:00 AM

9/11/2024 11:28:00 AM

9/11/2024 11:28:00 AM

9/11/2024 11:28:00 AM

9/11/2024 11:28:00 AM

9/11/2024 11:28:00 AM

9/11/2024 11:28:00 AM

9/11/2024 11:28:00 AM

9/11/2024 11:28:00 AM

9/11/2024 11:28:00 AM

9/11/2024 11:28:00 AM

9/11/2024 11:28:00 AM

9/11/2024 11:28:00 AM

9/11/2024 11:28:00 AM

9/11/2024 11:28:00 AM

9/11/2024 11:28:00 AM

9/11/2024 11:28:00 AM

9/11/2024 11:28:00 AM

9/11/2024 11:28:00 AM

9/11/2024 11:28:00 AM

9/11/2024 11:28:00 AM

9/11/2024 11:28:00 AM

9/11/2024 11:28:00 AM

9/11/2024 11:28:00 AM

9/11/2024 11:28:00 AM

9/11/2024 11:28:00 AM

9/11/2024 11:28:00 AM

9/11/2024 11:28:00 AM

9/11/2024 11:28:00 AM

9/11/2024 11:28:00 AM

9/11/2024 11:28:00 AM

9/11/2024 11:28:00 AM

9/11/2024 11:28:00 AM

9/11/2024 11:28:00 AM

9/11/2024 11:28:00 AM

9/11/2024 11:28:00 AM

9/11/2024 11:28:00 AM

9/11/2024 11:28:00 AM

9/11/2024 11:28:00 AM

9/11/2024 11:28:00 AM

9/11/2024 11:28:00 AM

9/11/2024 11:28:00 AM

9/11/2024 11:28:00 AM

9/11/2024 11:28:00 AM

9/11/2024 11:28:00 AM

9/11/2024 11:28:00 AM

9/11/2024 11:28:00 AM

9/11/2024 11:28:00 AM

9/11/2024 11:28:00 AM

9/11/2024 11:28:00 AM

9/11/2024 11:28:00 AM

9/11/2024 11:28:00 AM

9/11/2024 11:28:00 AM

9/11/2024 11:28:00 AM

9/11/2024 11:28:00 AM

9/11/2024 11:28:00 AM

9/11/2024 11:28:00 AM

9/11/2024 11:28:00 AM

9/11/2024 11:28:00 AM

9/11/2024 11:28:00 AM

9/11/2024 11:28:00 AM

9/11/2024 11:28:00 AM

9/11/2024 11:28:00 AM

9/11/2024 11:28:00 AM

9/11/2024 11:28:00 AM

9/11/2024 11:28:00 AM

9/11/2024 11:28:00 AM

9/11/2024 11:28:00 AM

9/11/2024 11:28:00 AM

9/11/2024 11:28:00 AM

9/11/2024 11:28:00 AM

9/11/2024 11:28:00 AM

9/11/2024 11:28:00 AM

9/11/2024 11:28:00 AM

9/11/2024 11:28:00 AM

9/11/2024 11:28:00 AM

9/11/2024 11:28:00 AM

9/11/2024 11:28:00 AM

9/11/2024 11:28:00 AM

9/11/2024 11:28:00 AM

9/11/2024 11:28:00 AM

9/11/2024 11:28:00 AM

9/11/2024 11:28:00 AM

9/11/2024 11:28:00 AM

9/11/2024 11:28:00 AM

9/11/2024 11:28:00 AM

9/11/2024 11:28:00 AM

9/11/2024 11:28:00 AM

9/11/2024 11:28:00 AM

9/11/2024 11:28:00 AM

9/11/2024 11:28:00 AM

9/11/2024 11:28:00 AM

9/11/2024 11:28:00 AM

9/11/2024 11:28:00 AM

9/11/2024 11:28:00 AM

9/11/2024 11:28:00 AM

9/11/2024 11:28:00 AM

9/11/2024 11:28:00 AM

9/11/2024 11:28:00 AM

9/11/2024 11:28:00 AM

9/11/2024 11:28:00 AM

9/11/2024 11:28:00 AM

9/11/2024 11:28:00 AM

9/11/2024 11:28:00 AM

9/11/2024 11:28:00 AM

9/11/2024 11:28:00 AM

9/11/2024 11:28:00 AM

9/11/2024 11:28:00 AM

9/11/2024 11:28:00 AM

9/11/2024 11:28:00 AM

9/11/2024 11:28:00 AM

9/11/2024 11:28:00 AM

9/11/2024 11:28:00 AM

9/11/2024 11:28:00 AM

9/11/2024 11:28:00 AM

9/11/2024 11:28:00 AM

9/11/2024 11:28:00 AM

9/11/2024 11:28:00 AM

9/11/2024 11:28:00 AM

9/11/2024 11:28:00 AM

9/11/2024 11:28:00 AM

9/11/2024 11:28:00 AM

9/11/2024 11:28:00 AM

9/11/2024 11:28:00 AM

9/11/2024 11:28:00 AM

9/11/2024 11:28:00 AM

9/11/2024 11:28:00 AM

9/11/2024 11:28:00 AM

9/11/2024 11:28:00 AM

9/11/2024 11:28:00 AM

9/11/2024 11:28:00 AM

9/11/2024 11:28:00 AM

9/11/2024 11:28:00 AM

9/11/2024 11:28:00 AM

9/11/2024 11:28:00 AM

9/11/2024 11:28:00 AM

9/11/2024 11:28:00 AM

9/11/2024 11:28:00 AM

9/11/2024 11:28:00 AM

9/11/2024 11:28:00 AM

9/11/2024 11:28:00 AM

9/11/2024 11:28:00 AM

9/11/2024 11:28:00 AM

9/11/2024 11:28:00 AM

9/11/2024 11:28:00 AM

9/11/2024 11:28:00 AM

9/11/2024 11:28:00 AM

9/11/2024 11:28:00 AM

9/11/2024 11:28:00 AM

9/11/2024 11:28:00 AM

9/11/2024 11:28:00 AM

9/11/2024 11:28:00 AM

9/11/2024 11:28:00 AM

9/11/2024 11:28:00 AM

9/11/2024 11:28:00 AM

9/11/2024 11:28:00 AM

9/11/2024 11:28:00 AM

9/11/2024 11:28:00 AM

9/11/2024 11:28:00 AM

9/11/2024 11:28:00 AM

9/11/2024 11:28:00 AM

9/11/2024 11:28:00 AM

9/11/2024 11:28:00 AM

9/11/2024 11:28:00 AM

9/11/2024 11:28:00 AM

9/11/2024 11:28:00 AM

9/11/2024 11:28:00 AM

9/11/2024 11:28:00 AM

9/11/2024 11:28:00 AM

9/11/2024 11:28:00 AM

9/11/2024 11:28:00 AM

9/11/2024 11:28:00 AM

9/11/2024 11:28:00 AM

9/11/2024 11:28:00 AM

9/11/2024 11:28:00 AM

9/11/2024 11:28:00 AM

9/11/2024 11:28:00 AM

9/11/2024 11:28:00 AM

9/11/2024 11:28:00 AM

9/11/2024 11:28:00 AM

9/11/2024 11:28:00 AM

9/11/2024 11:28:00 AM

9/11/2024 11:28:00 AM

9/11/2024 11:28:00 AM

9/11/2024 11:28:00 AM

9/11/2024 11:28:00 AM

9/11/2024 11:28:00 AM

9/11/2024 11:28:00 AM

9/11/2024 11:28:00 AM

9/11/2024 11:28:00 AM

9/11/2024 11:28:00 AM

9/11/2024 11:28:00 AM

9/11/2024 11:28:00 AM

9/11/2024 11:28:00 AM

9/11/2024 11:28:00 AM

9/11/2024 11:28:00 AM

9/11/2024 11:28:00 AM

9/11/2024 11:28:00 AM

9/11/2024 11:28:00 AM

9/11/2024 11:28:00 AM

9/11/2024 11:28:00 AM

9/11/2024 11:28:00 AM

9/11/2024 11:28:00 AM

9/11/2024 11:28:00 AM

9/11/2024 11:28:00 AM

9/11/2024 11:28:00 AM

9/11/2024 11:28:00 AM

9/11/2024 11:28:00 AM

9/11/2024 11:28:00 AM

9/11/2024 11:28:00 AM

9/11/2024 11:28:00 AM

9/11/2024 11:28:00 AM

9/11/2024 11:28:00 AM

9/11/2024 11:28:00 AM

9/11/2024 11:28:00 AM

9/11/2024 11:28:00 AM

9/11/2024 11:28:00 AM

9/11/2024 11:28:00 AM

9/11/2024 11:28:00 AM

9/11/2024 11:28:00 AM

9/11/2024 11:28:00 AM

9/11/2024 11:28:00 AM

9/11/2024 11:28:00 AM

9/11/2024 11:28:00 AM

9/11/2024 11:28:00 AM

9/11/2024 11:28:00 AM

9/11/2024 11:28:00 AM

9/11/2024 11:28:00 AM

9/11/2024 11:28:00 AM

9/11/2024 11:28:00 AM

9/11/2024 11:28:00 AM

9/11/2024 11:28:00 AM

9/11/2024 11:28:00 AM

9/11/2024 11:28:00 AM

9/11/2024 11:28:00 AM

9/11/2024 11:28:00 AM

9/11/2024 11:28:00 AM

9/11/2024 11:28:00 AM

9/11/2024 11:28:00 AM

9/11/2024 11:28:00 AM

9/11/2024 11:28:00 AM

9/11/2024 11:28:00 AM

9/11/2024 11:28:00 AM

9/11/2024 11:28:00 AM

9/11/2024 11:28:00 AM

9/11/2024 11:28:00 AM

9/11/2024 11:28:00 AM

9/11/2024 11:28:00 AM

9/11/2024 11:28:00 AM

9/11/2024 11:28:00 AM

9/11/2024 11:28:00 AM

9/11/2024 11:28:00 AM

9/11/2024 11:28:00 AM

9/11/2024 11:28:00 AM

9/11/2024 11:28:00 AM

9/11/2024 11:28:00 AM

9/11/2024 11:28:00 AM

9/11/2024 11:28:00 AM

9/11/2024 11:28:00 AM

9/11/2024 11:28:00 AM

9/11/2024 11:28:00 AM

9/11/2024 11:28:00 AM

9/11/2024 11:28:00 AM

9/11/2024 11:28:00 AM

9/11/2024 11:28:00 AM

9/11/2024 11:28:00 AM

9/11/2024 11:28:00 AM

9/11/2024 11:28:00 AM

9/11/2024 11:28:00 AM

9/11/2024 11:28:00 AM

9/11/2024 11:28:00 AM

9/11/2024 11:28:00 AM

9/11/2024 11:28:00 AM

9/11/2024 11:28:00 AM

9/11/2024 11:28:00 AM

9/11/2024 11:28:00 AM

9/11/2024 11:28:00 AM

9/11/2024 11:28:00 AM

9/11/2024 11:28:00 AM

9/11/2024 11:28:00 AM

9/11/2024 11:28:00 AM

9/11/2024 11:28:00 AM

9/11/2024 11:28:00 AM

9/11/2024 11:28:00 AM

9/11/2024 11:28:00 AM

9/11/2024 11:28:00 AM

9/11/2024 11:28:00 AM

9/11/2024 11:28:00 AM

9/11/2024 11:28:00 AM

9/11/2024 11:28:00 AM

9/11/2024 11:28:00 AM

9/11/2024 11:28:00 AM

9/11/2024 11:28:00 AM

9/11/2024 11:28:00 AM

9/11/2024 11:28:00 AM

9/11/2024 11:28:00 AM

9/11/2024 11:28:00 AM

9/11/2024 11:28:00 AM

9/11/2024 11:28:00 AM

9/11/2024 11:28:00 AM

9/11/2024 11:28:00 AM

9/11/2024 11:28:00 AM

9/11/2024 11:28:00 AM

9/11/2024 11:28:00 AM

9/11/2024 11:28:00 AM

9/11/2024 11:28:00 AM

9/11/2024 11:28:00 AM

9/11/2024 11:28:00 AM

9/11/2024 11:28:00 AM

9/11/2024 11:28:00 AM

9/11/2024 11:28:00 AM

9/11/2024 11:28:00 AM

9/11/2024 11:28:00 AM

9/11/2024 11:28:00 AM

9/11/2024 11:28:00 AM

9/11/2024 11:28:00 AM

9/11/2024 11:28:00 AM

9/11/2024 11:28:00 AM

9/11/2024 11:28:00 AM

9/11/2024 11:28:00 AM

9/11/2024 11:28:00 AM

9/11/2024 11:28:00 AM

9/11/2024 11:28:00 AM

9/11/2024 11:28:00 AM

9/11/2024 11:28:00 AM

9/11/2024 11:28:00 AM

9/11/2024 11:28:00 AM

9/11/2024 11:28:00 AM

9/11/2024 11:28:00 AM

9/11/2024 11:28:00 AM

9/11/2024 11:28:00 AM

9/11/2024 11:28:00 AM

9/11/2024 11:28:00 AM

9/11/2024 11:28:00 AM

9/11/2024 11:28:00 AM

9/11/2024 11:28:00 AM

9/11/2024 11:28:00 AM

9/11/2024 11:28:00 AM

9/11/2024 11:28:00 AM

9/11/2024 11:28:00 AM

9/11/2024 11:28:00 AM

9/11/2024 11:28:00 AM

9/11/2024 11:28:00 AM

9/11/2024 11:28:00 AM

9/11/2024 11:28:00 AM

9/11/2024 11:28:00 AM

9/11/2024 11:28:00 AM

9/11/2024 11:28:00 AM

9/11/2024 11:28:00 AM

9/11/2024 11:28:00 AM

9/11/2024 11:28:00 AM

9/11/2024 11:28:00 AM

9/11/2024 11:28:00 AM

9/11/2024 11:28:00 AM

9/11/2024 11:28:00 AM

9/11/2024 11:28:00 AM

9/11/2024 11:28:00 AM

9/11/2024 11:28:00 AM

9/11/2024 11:28:00 AM

9/11/2024 11:28:00 AM

9/11/2024 11:28:00 AM

9/11/2024 11:28:00 AM

9/11/2024 11:28:00 AM

9/11/2024 11:28:00 AM

9/11/2024 11:28:00 AM

9/11/2024 11:28:00 AM

9/11/2024 11:28:00 AM

9/11/2024 11:28:00 AM

9/11/2024 11:28:00 AM

9/11/2024 11:28:00 AM

9/11/2024 11:28:00 AM

9/11/2024 11:28:00 AM

9/11/2024 11:28:00 AM

9/11/2024 11:28:00 AM

9/11/2024 11:28:00 AM

9/11/2024 11:28:00 AM

9/11/2024 11:28:00 AM

9/11/2024 11:28:00 AM

9/11/2024 11:28:00 AM

9/11/2024 11:28:00 AM

9/11/2024 11:28:00 AM

9/11/2024 11:28:00 AM

9/11/2024 11:28:00 AM

9/11/2024 11:28:00 AM

9/11/2024 11:28:00 AM

9/11/2024 11:28:00 AM

9/11/2024 11:28:00 AM

9/11/2024 11:28:00 AM

9/11/2024 11:28:00 AM

9/11/2024 11:28:00 AM

9/11/2024 11:28:00 AM

9/11/2024 11:28:00 AM

9/11/2024 11:28:00 AM

9/11/2024 11:28:00 AM

9/11/2024 11:28:00 AM

9/11/2024 11:28:00 AM

9/11/2024 11:28:00 AM

9/11/2024 11:28:00 AM

9/11/2024 11:28:00 AM

9/11/2024 11:28:00 AM

9/11/2024 11:28:00 AM

9/11/2024 11:28:00 AM

9/11/2024 11:28:00 AM

9/11/2024 11:28:00 AM

9/11/2024 11:28:00 AM

9/11/2024 11:28:00 AM

9/11/2024 11:28:00 AM

9/11/2024 11:28:00 AM

9/11/2024 11:28:00 AM

9/11/2024 11:28:00 AM

9/11/2024 11:28:00 AM

9/11/2024 11:28:00 AM

9/11/2024 11:28:00 AM

9/11/2024 11:28:00 AM

9/11/2024 11:28:00 AM

9/11/2024 11:28:00 AM

9/11/2024 11:28:00 AM

9/11/2024 11:28:00 AM

9/11/2024 11:28:00 AM

9/11/2024 11:28:00 AM

9/11/2024 11:28:00 AM

9/11/2024 11:28:00 AM

9/11/2024 11:28:00 AM

9/11/2024 11:28:00 AM

9/11/2024 11:28:00 AM

9/11/2024 11:28:00 AM

9/11/2024 11:28:00 AM

9/11/2024 11:28:00 AM

9/11/2024 11:28:00 AM

9/11/2024 11:28:00 AM

9/11/2024 11:28:00 AM

9/11/2024 11:28:00 AM

9/11/2024 11:28:00 AM

9/11/2024 11:28:00 AM

9/11/2024 11:28:00 AM

9/11/2024 11:28:00 AM

9/11/2024 11:28:00 AM

9/11/2024 11:28:00 AM

9/11/2024 11:28:00 AM

9/11/2024 11:28:00 AM

9/11/2024 11:28:00 AM

9/11/2024 11:28:00 AM

9/11/2024 11:28:00 AM

9/11/2024 11:28:00 AM

9/11/2024 11:28:00 AM

9/11/2024 11:28:00 AM

9/11/2024 11:28:00 AM

9/11/2024 11:28:00 AM

9/11/2024 11:28:00 AM

9/11/2024 11:28:00 AM

9/11/2024 11:28:00 AM

9/11/2024 11:28:00 AM

9/11/2024 11:28:00 AM

9/11/2024 11:28:00 AM

9/11/2024 11:28:00 AM

9/11/2024 11:28:00 AM

9/11/2024 11:28:00 AM

9/11/2024 11:28:00 AM

9/11/2024 11:28:00 AM

9/11/2024 11:28:00 AM

9/11/2024 11:28:00 AM

9/11/2024 11:28:00 AM

9/11/2024 11:28:00 AM

9/11/2024 11:28:00 AM

9/11/2024 11:28:00 AM

9/11/2024 11:28:00 AM

9/11/2024 11:28:00 AM

9/11/2024 11:28:00 AM

9/11/2024 11:28:00 AM

9/11/2024 11:28:00 AM

9/11/2024 11:28:00 AM

9/11/2024 11:28:00 AM

9/11/2024 11:28:00 AM

9/11/2024 11:28:00 AM

9/11/2024 11:28:00 AM

9/11/2024 11:28:00 AM

9/11/2024 11:28:00 AM

9/11/2024 11:28:00 AM

9/11/2024 11:28:00 AM

9/11/2024 11:28:00 AM

9/11/2024 11:28:00 AM

9/11/2024 11:28:00 AM

9/11/2024 11:28:00 AM

9/11/2024 11:28:00 AM

9/11/2024 11:28:00 AM

9/11/2024 11:28:00 AM

9/11/2024 11:28:00 AM

9/11/2024 11:28:00 AM

9/11/2024 11:28:00 AM

9/11/2024 11:28:00 AM

9/11/2024 11:28:00 AM

9/11/2024 11:28:00 AM

9/11/2024 11:28:00 AM

9/11/2024 11:28:00 AM

9/11/2024 11:28:00 AM

9/11/2024 11:28:00 AM

9/11/2024 11:28:00 AM

9/11/2024 11:28:00 AM

9/11/2024 11:28:00 AM

9/11/2024 11:28:00 AM

9/11/2024 11:28:00 AM

9/11/2024 11:28:00 AM

9/11/2024 11:28:00 AM

9/11/2024 11:28:00 AM

9/11/2024 11:28:00 AM

9/11/2024 11:28:00 AM

9/11/2024 11:28:00 AM

9/11/2024 11:28:00 AM

9/11/2024 11:28:00 AM

9/11/2024 11:28:00 AM

9/11/2024 11:28:00 AM

9/11/2024 11:28:00 AM

9/11/2024 11:28:00 AM

9/11/2024 11:28:00 AM

9/11/2024 11:28:00 AM

9/11/2024 11:28:00 AM

9/11/2024 11:28:00 AM

9/11/2024 11:28:00 AM

9/11/2024 11:28:00 AM

9/11/2024 11:28:00 AM

9/11/2024 11:28:00 AM

9/11/2024 11:28:00 AM

9/11/2024 11:28:00 AM

9/11/2024 11:28:00 AM

9/11/2024 11:28:00 AM

9/11/2024 11:28:00 AM

9/11/2024 11:28:00 AM

9/11/2024 11:28:00 AM

9/11/2024 11:28:00 AM

9/11/2024 11:28:00 AM

9/11/2024 11:28:00 AM

9/11/2024 11:28:00 AM

9/11/2024 11:28:00 AM

9/11/2024 11:28:00 AM

9/11/2024 11:28:00 AM

9/11/2024 11:28:00 AM

9/11/2024 11:28:00 AM

9/11/2024 11:28:00 AM

9/11/2024 11:28:00 AM

9/11/2024 11:28:00 AM

9/11/2024 11:28:00 AM

9/11/2024 11:28:00 AM

9/11/2024 11:28:00 AM

9/11/2024 11:28:00 AM

9/11/2024 11:28:00 AM

9/11/2024 11:28:00 AM

9/11/2024 11:28:00 AM

9/11/2024 11:28:00 AM

9/11/2024 11:28:00 AM

9/11/2024 11:28:00 AM

9/11/2024 11:28:00 AM

9/11/2024 11:28:00 AM

9/11/2024 11:28:00 AM

9/11/2024 11:28:00 AM

9/11/2024 11:28:00 AM

9/11/2024 11:28:00 AM

9/11/2024 11:28:00 AM

9/11/2024 11:28:00 AM

9/11/2024 11:28:00 AM

9/11/2024 11:28:00 AM

9/11/2024 11:28:00 AM

9/11/2024 11:28:00 AM

9/11/2024 11:28:00 AM

9/11/2024 11:28:00 AM

9/11/2024 11:28:00 AM

9/11/2024 11:28:00 AM

9/11/2024 11:28:00 AM

9/11/2024 11:28:00 AM

9/11/2024 11:28:00 AM

9/11/2024 11:28:00 AM

9/11/2024 11:28:00 AM

9/11/2024 11:28:00 AM

9/11/2024 11:28:00 AM

9/11/2024 11:28:00 AM

9/11/2024 11:28:00 AM

9/11/2024 11:28:00 AM

9/11/2024 11:28:00 AM

9/11/2024 11:28:00 AM

9/11/2024 11:28:00 AM

9/11/2024 11:28:00 AM

9/11/2024 11:28:00 AM

9/11/2024 11:28:00 AM

9/11/2024 11:28:00 AM

9/11/2024 11:28:00 AM

9/11/2024 11:28:00 AM

9/11/2024 11:28:00 AM

9/11/2024 11:28:00 AM

9/11/2024 11:28:00 AM

9/11/2024 11:28:00 AM

9/11/2024 11:28:00 AM

9/11/2024 11:28:00 AM

9/11/2024 11:28:00 AM

9/11/2024 11:28:00 AM

9/11/2024 11:28:00 AM

9/11/2024 11:28:00 AM

9/11/2024 11:28:00 AM

9/11/2024 11:28:00 AM

9/11/2024 11:28:00 AM

9/11/2024 11:28:00 AM

9/11/2024 11:28:00 AM

9/11/2024 11:28:00 AM

9/11/2024 11:28:00 AM

9/11/2024 11:28:00 AM

9/11/2024 11:28:00 AM

9/11/2024 11:28:00 AM

9/11/2024 11:28:00 AM

9/11/2024 11:28:00 AM

9/11/2024 11:28:00 AM

9/11/2024 11:28:00 AM

9/11/2024 11:28:00 AM

9/11/2024 11:28:00 AM

9/11/2024 11:28:00 AM

9/11/2024 11:28:00 AM

9/11/2024 11:28:00 AM

9/11/2024 11:28:00 AM

9/11/2024 11:28:00 AM

9/11/2024 11:28:00 AM

9/11/2024 11:28:00 AM

9/11/2024 11:28:00 AM

9/11/2024 11:28:00 AM

9/11/2024 11:28:00 AM

9/11/2024 11:28:00 AM

9/11/2024 11:28:00 AM

9/11/2024 11:28:00 AM

9/11/2024 11:28:00 AM

9/11/2024 11:28:00 AM

9/11/2024 11:28:00 AM

9/11/2024 11:28:00 AM

9/11/2024 11:28:00 AM

9/11/2024 11:28:00 AM

9/11/2024 11:28:00 AM

9/11/2024 11:28:00 AM

9/11/2024 11:28:00 AM

9/11/2024 11:28:00 AM

9/11/2024 11:28:00 AM

9/11/2024 11:28:00 AM

9/11/2024 11:28:00 AM

9/11/2024 11:28:00 AM

9/11/2024 11:28:00 AM

9/11/2024 11:28:00 AM

9/11/2024 11:28:00 AM

9/11/2024 11:28:00 AM

9/11/2024 11:28:00 AM

9/11/2024 11:28:00 AM

9/11/2024 11:28:00 AM

9/11/2024 11:28:00 AM

9/11/2024 11:28:00 AM

9/11/2024 11:28:00 AM

9/11/2024 11:28:00 AM

9/11/2024 11:28:00 AM

9/11/2024 11:28:00 AM

9/11/2024 11:28:00 AM

9/11/2024 11:28:00 AM

9/11/2024 11:28:00 AM

9/11/2024 11:28:00 AM

9/11/2024 11:28:00 AM

9/11/2024 11:28:00 AM

9/11/2024 11:28:00 AM

9/11/2024 11:28:00 AM

9/11/2024 11:28:00 AM

9/11/2024 11:28:00 AM

9/11/2024 11:28:00 AM

9/11/2024 11:28:00 AM

9/11/2024 11:28:00 AM

9/11/2024 11:28:00 AM

9/11/2024 11:28:00 AM

9/11/2024 11:28:00 AM

9/11/2024 11:28:00 AM

9/11/2024 11:28:00 AM

9/11/2024 11:28:00 AM

9/11/2024 11:28:00 AM

9/11/2024 11:28:00 AM

9/11/2024 11:28:00 AM

9/11/2024 11:28:00 AM

9/11/2024 11:28:00 AM

9/11/2024 11:28:00 AM

9/11/2024 11:28:00 AM

9/11/2024 11:28:00 AM

9/11/2024 11:28:00 AM

9/11/2024 11:28:00 AM

9/11/2024 11:28:00 AM

9/11/2024 11:28:00 AM

9/11/2024 11:28:00 AM

9/11/2024 11:28:00 AM

9/11/2024 11:28:00 AM

9/11/2024 11:28:00 AM

9/11/2024 11:28:00 AM

9/11/2024 11:28:00 AM

9/11/2024 11:28:00 AM

9/11/2024 11:28:00 AM

9/11/2024 11:28:00 AM

9/11/2024 11:28:00 AM

9/11/2024 11:28:00 AM

9/11/2024 11:28:00 AM

9/11/2024 11:28:00 AM

9/11/2024 11:28:00 AM

9/11/2024 11:28:00 AM

9/11/2024 11:28:00 AM

9/11/2024 11:28:00 AM

9/11/2024 11:28:00 AM

9/11/2024 11:28:00 AM

9/11/2024 11:28:00 AM

9/11/2024 11:28:00 AM

9/11/2024 11:28:00 AM

9/11/2024 11:28:00 AM

9/11/2024 11:28:00 AM

9/11/2024 11:28:00 AM

9/11/2024 11:28:00 AM

9/11/2024 11:28:00 AM

9/11/2024 11:28:00 AM

9/11/2024 11:28:00 AM

9/11/2024 11:28:00 AM

9/11/2024 11:28:00 AM

9/11/2024 11:28:00 AM

9/11/2024 11:28:00 AM

9/11/2024 11:28:00 AM

9/11/2024 11:28:00 AM

9/11/2024 11:28:00 AM

9/11/2024 11:28:00 AM

9/11/2024 11:28:00 AM

9/11/2024 11:28:00 AM

9/11/2024 11:28:00 AM

9/11/2024 11:28:00 AM

9/11/2024 11:28:00 AM

9/11/2024 11:28:00 AM

9/11/2024 11:28:00 AM

9/11/2024 11:28:00 AM

9/11/2024 11:28:00 AM

9/11/2024 11:28:00 AM

9/11/2024 11:28:00 AM

9/11/2024 11:28:00 AM

9/11/2024 11:28:00 AM

9/11/2024 11:28:00 AM

9/11/2024 11:28:00 AM

9/11/2024 11:28:00 AM

9/11/2024 11:28:00 AM

9/11/2024 11:28:00 AM

9/11/2024 11:28:00 AM

9/11/2024 11:28:00 AM

9/11/2024 11:28:00 AM

9/11/2024 11:28:00 AM

9/11/2024 11:28:00 AM

9/11/2024 11:28:00 AM

9/11/2024 11:28:00 AM

9/11/2024 11:28:00 AM

9/11/2024 11:28:00 AM

9/11/2024 11:28:00 AM

9/11/2024 11:28:00 AM

9/11/2024 11:28:00 AM

9/11/2024 11:28:00 AM

9/11/2024 11:28:00 AM

9/11/2024 11:28:00 AM

9/11/2024 11:28:00 AM

9/11/2024 11:28:00 AM

9/11/2024 11:28:00 AM

9/11/2024 11:28:00 AM

9/11/2024 11:28:00 AM

9/11/2024 11:28:00 AM

9/11/2024 11:28:00 AM

9/11/2024 11:28:00 AM

9/11/2024 11:28:00 AM

9/11/2024 11:28:00 AM

9/11/2024 11:28:00 AM

9/11/2024 11:28:00 AM

9/11/2024 11:28:00 AM

9/11/2024 11:28:00 AM

9/11/2024 11:28:00 AM

9/11/2024 11:28:00 AM

9/11/2024 11:28:00 AM

9/11/2024 11:28:00 AM

9/11/2024 11:28:00 AM

9/11/2024 11:28:00 AM

9/11/2024 11:28:00 AM

9/11/2024 11:28:00 AM

9/11/2024 11:28:00 AM

9/11/2024 11:28:00 AM

9/11/2024 11:28:00 AM

9/11/2024 11:28:00 AM

9/11/2024 11:28:00 AM

9/11/2024 11:28:00 AM

9/11/2024 11:28:00 AM

9/11/2024 11:28:00 AM

9/11/2024 11:28:00 AM

9/11/2024 11:28:00 AM

9/11/2024 11:28:00 AM

9/11/2024 11:28:00 AM

9/11/2024 11:28:00 AM

9/11/2024 11:28:00 AM

9/11/2024 11:28:00 AM

9/11/2024 11:28:00 AM

9/11/2024 11:28:00 AM

9/11/2024 11:28:00 AM

9/11/2024 11:28:00 AM

9/11/2024 11:28:00 AM

9/11/2024 11:28:00 AM

9/11/2024 11:28:00 AM

9/11/2024 11:28:00 AM

9/11/2024 11:28:00 AM

9/11/2024 11:28:00 AM

9/11/2024 11:28:00 AM

9/11/2024 11:28:00 AM

9/11/2024 11:28:00 AM

9/11/2024 11:28:00 AM

9/11/2024 11:28:00 AM

9/11/2024 11:28:00 AM

9/11/2024 11:28:00 AM

9/11/2024 11:28:00 AM

9/11/2024 11:28:00 AM

9/11/2024 11:28:00 AM

9/11/2024 11:28:00 AM

9/11/2024 11:28:00 AM

9/11/2024 11:28:00 AM

9/11/2024 11:28:00 AM

9/11/2024 11:28:00 AM

9/11/2024 11:28:00 AM

9/11/2024 11:28:00 AM

9/11/2024 11:28:00 AM

9/11/2024 11:28:00 AM

9/11/2024 11:28:00 AM

9/11/2024 11:28:00 AM

9/11/2024 11:28:00 AM

9/11/2024 11:28:00 AM

9/11/2024 11:28:00 AM

9/11/2024 11:28:00 AM

9/11/2024 11:28:00 AM

9/11/2024 11:28:00 AM

9/11/2024 11:28:00 AM

9/11/2024 11:28:00 AM

9/11/2024 11:28:00 AM

9/11/2024 11:28:00 AM

9/11/2024 11:28:00 AM

9/11/2024 11:28:00 AM

9/11/2024 11:28:00 AM

9/11/2024 11:28:00 AM

9/11/2024 11:28:00 AM

9/11/2024 11:28:00 AM

9/11/2024 11:28:00 AM

9/11/2024 11:28:00 AM

9/11/2024 11:28:00 AM

9/11/2024 11:28:00 AM

9/11/2024 11:28:00 AM

9/11/2024 11:28:00 AM

9/11/2024 11:28:00 AM

9/11/2024 11:28:00 AM

9/11/2024 11:28:00 AM

9/11/2024 11:28:00 AM

9/11/2024 11:28:00 AM

9/11/2024 11:28:00 AM

9/11/2024 11:28:00 AM

9/11/2024 11:28:00 AM

9/11/2024 11:28:00 AM

9/11/2024 11:28:00 AM

9/11/2024 11:28:00 AM

9/11/2024 11:28:00 AM

9/11/2024 11:28:00 AM

9/11/2024 11:28:00 AM

9/11/2024 11:28:00 AM

9/11/2024 11:28:00 AM

9/11/2024 11:28:00 AM

9/11/2024 11:28:00 AM

9/11/2024 11:28:00 AM

9/11/2024 11:28:00 AM

9/11/2024 11:28:00 AM

9/11/2024 11:28:00 AM

9/11/2024 11:28:00 AM

9/11/2024 11:28:00 AM

9/11/2024 11:28:00 AM

9/11/2024 11:28:00 AM

9/11/2024 11:28:00 AM

9/11/2024 11:28:00 AM

9/11/2024 11:28:00 AM

9/11/2024 11:28:00 AM

9/11/2024 11:28:00 AM

9/11/2024 11:28:00 AM

9/11/2024 11:28:00 AM

9/11/2024 11:28:00 AM

9/11/2024 11:28:00 AM

9/11/2024 11:28:00 AM

9/11/2024 11:28:00 AM

9/11/2024 11:28:00 AM

9/11/2024 11:28:00 AM

9/11/2024 11:28:00 AM

9/11/2024 11:28:00 AM

9/11/2024 11:28:00 AM

9/11/2024 11:28:00 AM

9/11/2024 11:28:00 AM

9/11/2024 11:28:00 AM

9/11/2024 11:28:00 AM

9/11/2024 11:28:00 AM

9/11/2024 11:28:00 AM

9/11/2024 11:28:00 AM

9/11/2024 11:28:00 AM

9/11/2024 11:28:00 AM

9/11/2024 11:28:00 AM

9/11/2024 11:28:00 AM

9/11/2024 11:28:00 AM

9/11/2024 11:28:00 AM

9/11/2024 11:28:00 AM

9/11/2024 11:28:00 AM

9/11/2024 11:28:00 AM

9/11/2024 11:28:00 AM

9/11/2024 11:28:00 AM

9/11/2024 11:28:00 AM

9/11/2024 11:28:00 AM

9/11/2024 11:28:00 AM

9/11/2024 11:28:00 AM

9/11/2024 11:28:00 AM

9/11/2024 11:28:00 AM

9/11/2024 11:28:00 AM

9/11/2024 11:28:00 AM

9/11/2024 11:28:00 AM

9/11/2024 11:28:00 AM

9/11/2024 11:28:00 AM

9/11/2024 11:28:00 AM

9/11/2024 11:28:00 AM

9/11/2024 11:28:00 AM

9/11/2024 11:28:00 AM

9/11/2024 11:28:00 AM

9/11/2024 11:28:00 AM

9/11/2024 11:28:00 AM

9/11/2024 11:28:00 AM

9/11/2024 11:28:00 AM

9/11/2024 11:28:00 AM

9/11/2024 11:28:00 AM

9/11/2024 11:28:00 AM

9/11/2024 11:28:00 AM

9/11/2024 11:28:00 AM

9/11/2024 11:28:00 AM

9/11/2024 11:28:00 AM

9/11/2024 11:28:00 AM

9/11/2024 11:28:00 AM

9/11/2024 11:28:00 AM

9/11/2024 11:28:00 AM

9/11/2024 11:28:00 AM

9/11/2024 11:28:00 AM

9/11/2024 11:28:00 AM

9/11/2024 11:28:00 AM

9/11/2024 11:28:00 AM

9/11/2024 11:28:00 AM

9/11/2024 11:28:00 AM

9/11/2024 11:28:00 AM

9/11/2024 11:28:00 AM

9/11/2024 11:28:00 AM

9/11/2024 11:28:00 AM

9/11/2024 11:28:00 AM

9/11/2024 11:28:00 AM

9/11/2024 11:28:00 AM

9/11/2024 11:28:00 AM

9/11/2024 11:28:00 AM

9/11/2024 11:28:00 AM

9/11/2024 11:28:00 AM

9/11/2024 11:28:00 AM

9/11/2024 11:28:00 AM

9/11/2024 11:28:00 AM

9/11/2024 11:28:00 AM

9/11/2024 11:28:00 AM

9/11/2024 11:28:00 AM

9/11/2024 11:28:00 AM