

## Review Article

### Antinutrients in mungbean and strategy for reduction: An overview

#### Abstract

Mung bean (*Vigna radiata* L. Wilczek) is a highly nutritious pulse, particularly popular in Asian countries and traditionally used in medicine. It is a rich source of protein, dietary fiber, essential vitamins, minerals, and amino acids, including calcium, magnesium, iron, phosphorus, and potassium. Trypsin inhibitors, tannins, phytic acid, saponins, and polyphenols are some of the antinutritional substances found in mung beans that can lower their nutritional value by preventing the digestion of proteins and carbohydrates, causing problems with the liver and intestines, and binding nutrients. These antinutrients can have both beneficial and detrimental impacts on human health, and they are essential to plant physiology for defense and seed storage, among other functions. Several processing techniques, including soaking, autoclaving, cooking, sprouting, roasting, and dehulling, can be employed to lessen their effects; each technique efficiently reduces a particular type of antinutrient. Moreover, mung bean varieties with reduced amounts of antinutritional substances may be developed using breeding techniques like selection, backcrossing, and mutation breeding, which would improve the beans' total nutritional value.

**Keywords:** Mungbean, Antinutrients, Processing, phytate, Trypsin, polyphenols

#### Introduction

Legumes are a broad category of crops that belong to flowering plants and yield seeds in pods that are frequently processed for use in food and feed. With about 19500 species and 750 genera, legumes are the third-largest family of flowering plants (Abbas and Ahmad, 2018). They are an important source of dietary protein and play a big role in the diets of the impoverished in underdeveloped and emerging nations where it is generally more expensive to get animal protein. In addition, compared to other high-protein food kinds, legumes have minimal environmental impact (Afam *et al.*, 2016).

The mung bean (*Vigna radiata* L. Wildzek) is a popular pulse that is consumed all throughout the world, but especially in Asian nations, where it has long been used in traditional medicine (Hou *et al.*, 2019). India is the world's leading producer of mungbean, which is cultivated in practically every state. Mungbean production on 33.37 lakh hectares was 17.5 lakh tons in Kharif 2022–2023. It is grown both alone and in combination with other crops,

including as maize, sorghum, cotton, and minor millets (Source: [www.indiastat.com](http://www.indiastat.com) and [eands.dacnet.nic.in](http://eands.dacnet.nic.in), 2023).

**Comment [GT1]:** This is not standard citation and not mentioned in the reference

Like other members of the legume family, mung beans are composed of 63% carbohydrates, 16% dietary fiber, 1% fat, and 24% protein (Huang *et al.*, 2013). While its various food products like cake, sprouts, noodles, and soup evolved in oriental nations like China, the Philippines, and Thailand, its savoury foods, sweets, snacks, and dhal (thick stews made from dehulled and split grains) have evolved and gained popularity in the Indian subcontinent (Dahiya *et al.* 2013). In addition, mung beans are a highly well-liked Asian dish that have significant advantages over other legumes, including the ability to cleanse, reduce inflammation, fight tumor growth, lower cholesterol, and diuretic effects (Hu, 2003).

There has never been an attempt to scientifically validate the safety and quality of food produced using conventional processing techniques. Different processing techniques, such as soaking, dehulling, cooking, germination, and roasting, can be used to reduce the antinutrients; however, research is still needed to determine how beneficial these techniques are in compared. The health concerns associated with mung bean consumption may be significantly decreased with the documentation of processing techniques that effectively remove the antinutrients found in mung beans. Therefore, it is more than justified to try to enhance the nutritional qualities of mung beans with home remedies to lower antinutritional elements. Thus current review provides a knowledge about different processing techniques to be followed for elimination of antinutrients from mungbean.

**Comment [GT2]:** Citation is required. Please mention who said these.

### **Health benefits of mung bean**

Green gram seeds are used medicinally to treat obesity, fever, and other conditions. In the Ayurvedic medical system, it is beneficial for skin conditions, heat-related illnesses, and weakness. In India, green gram flour is used to make herbal soap. A common ingredient in Asian cooking, green gram sprouts are high in vitamins and minerals. According to recent studies, green gram starch is a good source of slowly digesting carbohydrates for those with diabetes. It alters lipid and glucose metabolism favourably and causes a blood glycaemic response in humans (Randhir *et al.*, 2004).

It has been observed that the green gram helps to moisturize the skin and regulate unsettled stomach. According to Tang *et al.* (2014), the main components of green gram's anti-melanogenesis, antioxidant, antimicrobial, anti-hypertensive, anti-inflammatory, immunomodulatory, and antitumor properties are believed to be its high levels of proteins, amino acids, oligosaccharides, and polyphenols. These components also play a role in the regulation of lipid metabolism.

### Structure of mung bean cotyledon

Mature seeds have three essential components: the embryo, cotyledons, and seed coat. 7–15% of the total seed mass is made up of the seed coat. Approximately 85% of the seed mass is made up of cotyledons, with the remaining 1-4% coming from the embryo, as seen in Fig. The exterior structures of the seed are the testa, hilum, micropyle, and raphe. The outside portion of the seed, known as the testa (smooth or rough), almost completely covers the seed surface. Where the seed was attached to the stalk, the hilum is an oval scar seen on the seed coat. The micropyle is a tiny hole near the hilum in the seed coat. An edge on the hilum that faces the micropyle is called the raphe. The embryonic structure is the surplus material that remains after the seed coat is removed from the grain. There are two cotyledons and a brief pivot above and below them that make up the early-stage structure. The seed coat provides a flimsy assurance, but the two cotyledons are not genuinely attached to one another other than at the pivot. The seed is hence unusually susceptible to breaking (Patel *et al.*, 2016).

Comment [GT3]: Figure what?

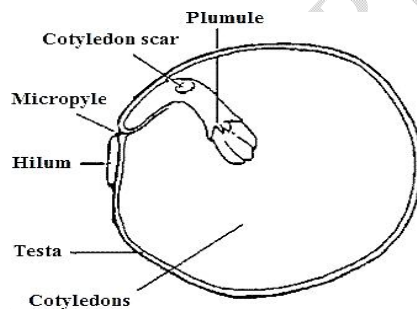


Fig.1 : Structure of mung bean cotyledon (Patel *et al.*, 2016).

### What are the antinutrients?

Chemicals known as antinutrients hinder the body's ability to grow and function normally when they are present in food, whether it comes from humans or animals. According to Diouf *et al.* (2019), anti-nutritional agents are primarily found in foods and feed material made from grain legumes and pulses, as well as in pulses themselves.

Comment [GT4]: Are you sure hindering the body's ability to grow and function normally?Detail explanation about the function of anti-nutrients with updated references. The topic is antinutrients, it needs further explanation.

### Can "anti-nutrients" be even useful?

There can be no doubt that the so called "anti-nutrients" of legumes have a biological function. They are certainly important in the physiology of seedlings as N or C storage compounds and to facilitate nutrient uptake and rhizosphere establishment (Enneking& Wink, 2000).

Comment [GT5]: Please state this as a sentence form and explain in detail about the use of antinutrients.

Comment [GT6]: Use updated reference.

**Table 1: The major role of anti-nutrients in consumption and plant growth regulation.**

| Sr. no. | Anti-nutrient     | Effects on consumption   | Role in plant growth   | References  |
|---------|-------------------|--|--|---|
| 1.      | Phytic acid       | 1. Animal nutrition inhibitor.<br>2. Decreases the level of blood glucose.   | Micronutrient chelation and phosphorus storage for growth and development.         | Gupta <i>et al.</i> , 2015; Dilworth <i>et al.</i> , 2005;                              |
| 2.      | Saponins          | 1. By causing damage to red blood cells, induce vomiting and diarrhea.<br>2. Impacts the gastrointestinal membranes' ability to absorb nutrients.<br>3. Detrimental effect on the feed efficiency and chick development. | Resistance against diseases in vegetables.   | Akande <i>et al.</i> , 2010; Cárdenas <i>et al.</i> , 2015                              |
| 3.      | Trypsin inhibitor | Protease inhibitors reduce the activity of some enzymes during ingestion.  | Confer biotic stress tolerance and act as biopesticides.                           | Battelino <i>et al.</i> , 2019; Amaral <i>et al.</i> , 2022; Ribeiro <i>et al.</i> 2015 |
| 4.      | Tannins           | 1. Damage the intestines and inhibit digestion enzymes.<br>2. Have been linked to decreased protein digestibility, growth rate, feed efficiency, and feed intake.  | Act against pathogenic bacteria, have antibacterial actions, and are antioxidants. | Akande <i>et al.</i> , 2010;  |

### Anti-nutritional profiling of mungbean

Antinutritional substances found in mung beans include tannins, phytic acids, polyphenols, trypsin inhibitors, and saponins. Sivakumaran *et al.* (2017), Dahiya *et al.* (2015), Singh *et al.* (2015), Abeykoon *et al.*, 2021).

### Tannins

The seed coat of most legumes contains significant levels of tannins, which are polyphenolic chemicals. It interferes with iron absorption by forming an irreversible bond with iron. Moreover, they bind proteins, decreasing their availability, and interfere with the absorption of B vitamins. The ancient word "tannin" refers to a customary invention. The method of turning raw animal hides or skins into sturdy, non-putrescible leathers by

applying plant extracts from different plant sections was referred to in the logical writing as tanning. Plant polyphenolic component tannin, which has a molecular weight ranging from 500 to over 3000, is an astringent, bitter substance that either binds or precipitates proteins and other organic molecules, such as amino acids and alkaloids (Gemedé & Ratta, 2014).

**Molecular formula:**  $C_{76}H_{52}O_{46}$

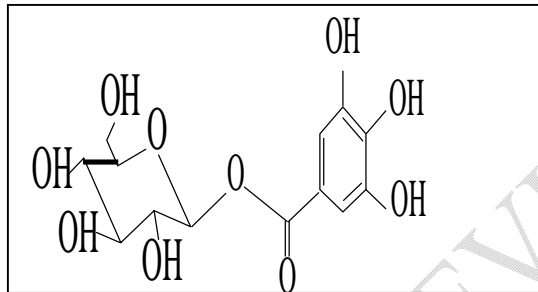


Fig.2 : Structure of hydrolyzed tannin (Diouf *et al.* 2019)

### Phytate phosphorus

Foods strong in fiber, such as legumes and cereals, also have high levels of phytate or phytic acid. In the fully grown seeds of both monocot and dicot plants, phytate, or myo-inositol 1,2,3,4,5,6-hexakis (dihydrogen phosphate), is a major form of phosphorous storage. It typically accounts for more than 80% of the soluble myo-inositol phosphate in seeds and about 75% of the total phosphorous (Dorsch *et al.*, 2003). Plant seed components make up the majority of animal and human feeds. Because humans lack phytases, seed phytic acid is typically inaccessible to monogastric animals like humans and is expelled as manure (Reddy *et al.*, 1989). Water quality problems and eutrophication are caused by the excretion of undigested phytic acid in fertilizer (Sharpley *et al.*, 1994). A phosphatase called phytotase hydrolyzes phytate to produce free orthophosphate and inositol (Wyss *et al.*, 1999). It's available in a lot of seeds. Cereals contain a large amount of phosphorus in the form of phytate. Iron, zinc, calcium, and magnesium are bound by phytate, which prevents them from being absorbed (Aneta and Dasha, 2019). Phytic acid (IP6) and phytin (phytate salts) are the two main types of phytates that are encountered. Phytates are chelating agents; their primary mechanism of antinutritional action is the binding of metals ( $Ca^{+2}$ ,  $Mg^{+2}$ ,  $Fe^{+2}$ ,  $Zn^{+2}$ , and  $Cu^{+2}$ ), which results in inadequate absorption (Morris *et al.*, 1986).

Furthermore, protein consumption is negatively impacted by the creation of protein-phytate complexes (Selle *et al.* 2000). Moreover, phytates affect the activities of trypsin,

Comment [GT7]: Very old reference, update it

Comment [GT8]: Very old reference, update it

Comment [GT9]: Very old reference, update it

Comment [GT10]: Very old reference, update it

Comment [GT11]: Old?

pepsin, and amylase (Urbano *et al.* 2000). Researchers have reported that the estimated values of phytate content in mungbean are as follows: 57.62 mg/100g (Oburbaga and Anyika, 2010), 63.2 mg/100g (Ravindran *et al.*, 1976), 58 mg/100g (Mubarak, 2005), 66.47 mg/100g to 69.24 mg/100g (Kakati *et al.*, 2010), 44.80 mg/100g (Dahiya *et al.*, 2015). According to Srinivasan *et al.* (2007), phytic acid can be viewed as an anti-nutritional substance from a nutritional standpoint, yet it gives grains protection from the bruchid beetle (*Callosobruchus maculatus*) when they are being stored. Wide variations in reported phytic acid levels in mung beans were discovered by Sompong *et al.* (2009). These variations could be caused by genetic variations, since some reports indicate that the phytate content of mung beans is inherited on a genetic basis. Upendra Pokharel (2021) investigated the impact of processing techniques on antinutritional factors found in mung beans. The findings showed that the raw mung bean's phytate content was 626.54 mg/100 g, which is comparable to the 622 mg/100 g found by Singh *et al.* (2015). However, this value is lower than the range of 727 to 940 mg/100 g found by Bindu *et al.* (2017). According to Zafar *et al.* (2023), phytic acid levels in mung bean cultivars ranged from 0.45 to 1.2 percent, with a mean value of 0.69 percent.

**Molecular formula: C<sub>6</sub>H<sub>18</sub>O<sub>24</sub>P<sub>6</sub>**

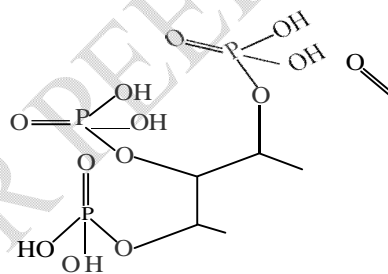


Fig.3: Structure of phytic acid  
Source: Aneta and Dasha (2019)

### Polyphenols

All higher plants contain phenolic compounds, which are widely distributed bioactive secondary metabolites mainly produced by the pentose phosphate, phenylpropanoid, and shikimic acid pathways (Balasundram *et al.*, 2006). They can range from simple molecules to extremely complex polymers and share a structural characteristic of having one or more hydroxyl groups directly attached to the aromatic ring. Based on the number of phenolic hydroxyl groups connected and the structural components that link benzene rings, phenolic compounds are subdivided into subgroups of phenolic acids, flavonoids, tannins, and stilbenes (Singh *et al.*, 2016). It is estimated that about 8,000 phenolic

chemicals found in flora have been identified and extracted (Ouchemoukhet *et al.*, 2017). Foods' sensory qualities are influenced by phenolic compounds, and tannins are mainly responsible for the astringency of food sources (Landete, 2012).

## Saponins

Saponins are naturally occurring substances that are found in every cell of legume plants. A complex and chemically diverse category of chemicals, saponins derive their name from their ability to produce stable, soap-like foams in aqueous solutions (Arunasalam *et al.*, 2004). Saponins are glycosidic, amphiphilic, and heat-stable substances that are typically found in a wide range of plant foods. They consist of one or more oligosaccharide moieties bonded to an aglycone that is either steroidal or triterpenoid. These compounds have amazing foaming and emulsifying qualities because of the strong hydrophilicity of the sugar chains and the excessive hydrophobicity of the aglycone (Liener, 1994).

They are structurally made up of a lipid-soluble aglycone that is coupled to one or more water-soluble sugar residues of various kinds and quantities of sugars that are found in many different plants. This aglycone can contain either a sterol or a triterpene group. The types, quantities, and content of the steroid ring determine the architectures of saponin found in various plant diets (Rao and Sung, 1995). The figure depicts the structure of soyasaponin III, which is found in mung beans.

**Molecular formula:**  $C_{58}H_{94}O_{27}$

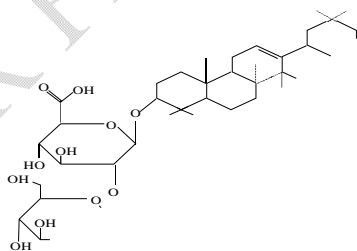


Fig.4: Structure of soyasaponin III present in mung bean  
Source: Shi *et al.* (2004)

## Trypsin inhibitor

A protein known as a trypsin inhibitor (TI) functions as a kind of serine protease inhibitor (serpin) by regulating the activation and synergistic reactions of other proteins, thereby reducing the biological activity of trypsin. Based on molecular weight, legume TIs are categorized into two families: Bowman-Birk (BBTIs) with molecular weights of about 8 kDa and Kunitz (KTIs) with molecular weights of about 20 kDa. While mung beans, cowpeas, lentils, etc. exclusively contain trypsin inhibitors from the BBTI family, soybeans have

Comment [GT13]: Old

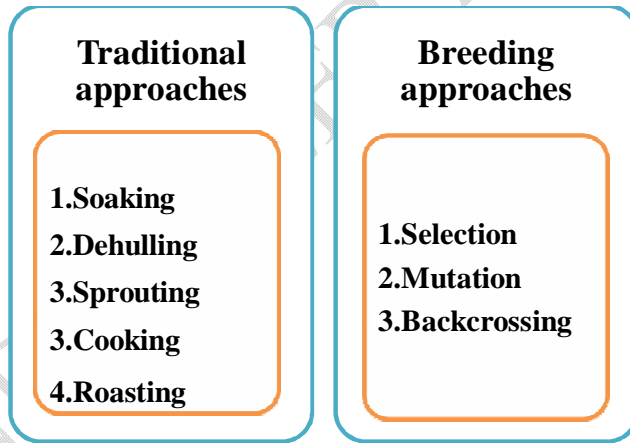
inhibitors from both groups. According to Vanderven et al. (2005), KTI has two disulphide bonds while BBTI has seven. Trypsin is an enzyme that breaks down a variety of proteins, mostly during digestion in humans and other animals like young ruminants and monogastric animals. When trypsin inhibitor is consumed, it acts as an irreversible and competitive substrate (Silverman *et al.*, 2001). It competes with proteins to bind to trypsin and therefore renders it unavailable to bind with proteins for the digestion

Furthermore, chymotrypsin function is partially interfered with by trypsin inhibitors (Vagadia *et al.*, 2017). Trypsin inhibitors lower the effectiveness of proteins, which means that the body of the consumer cannot fully and efficiently utilize the protein (Klomklao *et al.*, 2011).

**Strategies for reduction of Anti-nutrients from mung bean**

Strategies for reducing anti-nutrients in mung beans include traditional processing methods such as soaking, sprouting, fermentation, and cooking. Each of these methods has been shown to significantly lower the levels of various anti-nutrients, thereby improving the digestibility and nutritional quality of mung beans (Samtiya *et al.* 2020).

Comment [GT14]: This part is not explained in depth and comparing with others researchers works



**Fig.5 Different approaches for reduction of anti-nutrients from mung bean**

| Physical processing | Comments   | Results   | References                 |
|---------------------|--|---|----------------------------|
| Soaking             | Deeping the seeds in water with or without anyadditives. | Reduce the oligosaccharides like raffinose and stachyose. | (Egounlety and Aworh 2003) |

|             |  |  |   |
|-------------|--|--|---|
| Autoclaving | Heating at high temperature 121°C under pressure.  | Reduction in trypsin inhibitors and tannins.   | (Wang <i>et al.</i> , 1997)   |
| Cooking     | Ordinary domestic cooking by using pressure cooker.  | Reduction of tannin content after cooking due to the binding of tannins with proteins and other organic substances during cooking. | (Kaur <i>et al.</i> , 2020), (Kumar <i>et al.</i> , 2021)             |
| Sprouting   | Soaking the seed in ethanol for one minute. (for sterilization) followed by keeping it in moist cotton until germination appear. | Reduces antinutritional factors such as trypsin inhibitors, phytic acid, stachyose and raffinose.                                  | (Ahmed <i>et al.</i> , 1995; Khalil and Mansour 1995) (Mubarak 2005). |
| Roasting    | Dry heating about 120°C-250°C.   | Removes of trypsin inhibitor   | (Khattab <i>et al.</i> , 2009)  |

Comment [GT15]: old

Comment [GT16]: old

Table 2 Different approaches for reduction of anti-nutrients from mung bean

## Traditional approaches

### Effects of soaking

According to Siddiq and Uebersax (2012), soaking causes water to permeate the protein fraction and starch granules, which desaturates the protein and makes the texture of the beans mushy. Since phytate dissolves in water, soaking beans in water for the entire night significantly reduced the amount of phytate present. After soaking for 12 hours, mung beans' phytic acid content decreased by 18%. After soaking, mung beans' levels of polyphenols decreased by 23% whereas those of the trypsin inhibitor decreased by 7% (Grewal and Jood, 2006). Mung beans that are soaked for 24 hours have a 28–35% different tannin content (Kakati *et al.*, 2010).

### Effect of cooking

Cooking often inactivates volatile molecules and heat-sensitive antinutritive factors including chymotrypsin and trypsin inhibitors. Tannin content in a variety of pulses, including kidney, mung, lentil, and cowpea, may have decreased after boiling as a result of tannins binding to proteins and other organic materials (Kaur *et al.*, 2020; Kumar *et al.*, 2021). Cooking destroys polyphenols in addition to tannins (Yasmin *et al.*, 2008). Pre-soaked cooked mung beans had a 15% and 20% decrease in phytic acid and tannin, respectively. Tannins and phytic acid are reduced in cooked mung beans that haven't been soaked by 25% and 30%, respectively (Singh *et al.* 2015).

## Effect of Autoclaving

Trypsin inhibitor and hemagglutinin were completely eliminated from mung beans using autoclaving (Mubarak, 2005). Phytic acid and tannin have been reduced by 34% and 44%, respectively, in presoaked autoclaved mung bean samples (Singh *et al.*, 2015). Phytic acid and tannin have been reduced by 32% and 40%, respectively, in unsoaked autoclaved mung bean samples (Singh *et al.*, 2015).

## Effect of Roasting

Roasting is done to enhance the product's sensory attributes and inactivate harmful enzymes, which enhances the product's nutritional value and storage capacity (Rackiset *al.*, 1986). According to Singh *et al.* (2015), roasting mung beans can reduce their phytic acid, tannin, trypsin inhibitor, and polyphenols by up to 30%, 17%, 92%, and 17%, respectively.

## Effect of Dehulling

One of the important post-harvest processes for improving the palatability of food grains is dehulling, or the removal of the seed coat from pulses. However, dietary fiber and minerals are lost as a result. The embryo and sticky layer that are present between the hull and the cotyledons are also removed by dehulling (Kumar *et al.*, 2021). Dehulling decreased condensed tannin and polyphenol concentration while increasing protein content. (Egounlety and Aworh 2003; Alonso *et al.*, 2000).

## Effect of Sprouting

During sprouting, the enzymatic system of the seed gets activated. It has been recognized as one of the best processing techniques for raising the nutritional content of pulses and improving the nutrients' digestibility, especially protein and carbs (Kumar *et al.*, 2021). This is the most efficient way to lessen the phytic acid in legumes. During germination, phytic acid is broken down, increasing the availability of inorganic phosphorus (Virginia *et al.*, 2012). Tannin, phytic acid, and trypsin inhibitor are all decreased by 67%, 31%, and 23%, respectively, upon mung bean sprouting (Mubarak, 2005).

## Breeding approaches

### Selection

The process of selection includes discovering the plants with desirable traits, keeping them, and getting rid of the ones that have unfavorable traits. It was also shown that screening pulse germplasm for reduced enzyme inhibitors was an effective method of locating possible donors with reduced inhibitors. For example, Orf and Hymowitz (1979) identified two zero Kunitz inhibitor lines in soybeans, PI 157-440 and PI 196-168.

Comment [GT17]: the section is not explained in depth comparing with others researchers results.

Comment [GT18]: -it needs updated references. -Further explanation about this section is needed.

## Backcrossing and Mutation breeding

A backcross occurs when an organism combines with either of its parents. Plant mutation breeding, also known as variant breeding, is an approach for creating novel crop varieties that involves causing spontaneous genetic diversity in plants using chemical or physical methods. The two primary approaches for reducing anti-nutritional characteristics in crops are backcrossing and mutation breeding (Wilcox et al., 2000; Yuan *et al.*, 2009). Using both spontaneous and induced mutations in important crops, phytic acid has been successfully reduced (Pramitha *et al.*, 2021).

## Conclusions

This review highlights the key antinutritional components in mung beans, such as trypsin inhibitors, tannins, and phytic acid, which can reduce nutrient absorption and cause health issues. To mitigate these effects, processing methods like dehulling, pressure cooking, and sprouting are most effective, preserving nutrients while reducing antinutrients. Additionally, breeding techniques like selection, backcrossing, and mutation breeding show promise in eliminating harmful compounds. Therefore, these methods are recommended for preparing mung beans to enhance their nutritional value and safety.

## Future prospects

Large amount of mung bean is imported from India as it has the highest production in the world. Nowadays, production rate is also increasing day by day mainly, and hence consumption is also increasing due to its beneficial effect in the human body. Present review prominently deals with antinutrients in mung bean and effect of various processing methods to reduce those antinutrients. Hence, review might help in the establishment of the effective and optimized way for the use of green gram in household level and industrial levels.

## References

- Abbas, Y. and Ahmad, A. (2018). Impact of processing on nutritional and antinutritional factors of legumes: a review. *Annals. Food Sci. Technol.* **19** (2), 199-215.
- Adegunwa, M., Adebowale, A., Bakare, H. and Kalejaiye, K. (2014). Effects of treatments on the antinutritional factors and functional properties of bambaragroundnut (*Voandzeia subterranea*) flour. *J. Food Process. Preserv.* **38**(4), 1875-1881. [doi:10.1111/jfpp.12159].
- Afam, A. O. C., Agugo, U. A. and Anyaegbu, E. C. (2016). Effect of germination on the nutritional and antinutritional contents of mungbean. *Asian J. Appl. Sci. Technol.* **4**(7), 801-805.

**Comment [GT19]:** This section is not effectively explained, it needs further explanation about this method

**Comment [GT20]:** Put down this section below the future prospects.

**Comment [GT21]:** Which method is best? Traditional or breeding? Clearly indicate the one. Which method is best for which type antinutritional components?

- Aguilera, Y., Estrella, I., Benitez, V., Esteban, R. M. and Martín-Cabrejas, M. A. (2011). Bioactive phenolic compounds and functional properties of dehydrated bean flours. *Food Res. Int.* **44** (3), 774-780.
- Akande, K.E. and Fabiyi, E.F. (2010). Effect of processing methods on some antinutritional factors in legume seeds for poultry feeding. *Int. J. Poultry Sci.* **9** (10), 996-1001.
- Akhtar, M. S., Israr, B., Bhatti, N. and Ali, A. (2011). Effect of cooking on soluble and insoluble oxalate contents in selected Pakistani vegetables and beans. *Int. J. Food Prop.* **14** (1), 241-249.
- Alajaji, S. A. and El-Adawy, T. A. (2006). Nutritional composition of chickpea (*Cicer arietinum* L.) as affected by microwave cooking and other traditional cooking methods. *J. Food Compos. Anal.* **19** (8), 806-812.
- Alonso, R., Aguirre, A. and Marzo, F. (2000). Effects of extrusion and traditional processing methods on antinutrients and in vitro digestibility of protein and starch in faba and kidney beans. *Food Chem.* **68** (2), 159-165.
- Amarowicz, R. and Pegg, R.B. (2008). Legumes as a source of natural antioxidants. *Eur. J. Lipid Sci. Technol.* **110** (10), 865-878.
- Aneta, P. and Dasha, M. (2019). Antinutrients in plant-based foods: a review. *Open Biotechnol. J.* **13**, 68-76. [doi:10.2174/1874070701913010068].
- Arunasalam, K., Shi, J., Yeung, D., Kakuda, Y., Mittal, G. and Jiang, Y. (2004). Saponins from edible legumes: chemistry, processing, and health benefits. *J. Med. Food.* **7**(1), 67-78. [doi:10.1089/109662004322984734].
- Attou, A., Bouderoua, K. and Cheriguene, A. (2020). Effects of roasting process on nutritional and antinutritional factors of two lentil varieties (*Lens culinaris*) cultivated in Algeria. *S. Asian J. Exp. Biol. Sci.* **10** (6), 445-454.
- Aviles Gaxiola, S., Chuck Hernández, C. and Serna Saldivar, S. O. (2018). Inactivation methods of trypsin inhibitor in legumes: A review. *J. Food Sci.* **83** (1), 17-29. [doi:10.1111/1750-3841.13985].
- Awad, E., Osman, A. M., Awadelkareem, A. M. and Gasim, S. M. (2014). Nutritional composition and antinutrients of two faba bean lines. *Int. J. Adv. Res.* **2** (12), 538-544.
- Balasundram, N., Sundram, K. and Samman, S. (2006). Phenolic compounds in plants and agri-industrial by-products: Antioxidant activity, occurrence, and potential uses. *Food Chem.* **99** (1), 191-203.
- Barroga, C. F., Laurena, A. C. and Mendoza, E. M. T. (1985). Polyphenols in mung bean (*Vigna radiata* (L.) Wilczek): Determination and removal. *J. Agri. Food Chem.* **33**(5), 1006-1009. [doi:10.1021/jf00065a056].
- Basu, N. and Rastogi, R.P. (1967). Triterpenoid saponins and sapogenins. *Phytochem.* **6**(9), 1249-1270. [doi:10.1016/S0031-9422(00)86088-4].
- Bindu, B.M., Ashwini, M., Vijaykumar, A.G. and Kasturiba, B. (2017). Nutrition composition and antinutritional factors of green gram varieties. *Environ. Ecol.* **35**(3), 1699-1703.
- Boye, J., Zare, F. and Pletch, A. (2010). Pulse proteins: Processing, characterization, functional properties and applications in food and feed. *Food Res. Int.* **43** (2), 414-431. [doi:10.1016/j.foodres.2009.09.003].
- Brudzynski, A. and Salamon, A. (2011). The oxalic acid content in selected barley varieties grown in

- Poland, as well as in their malts and worts. *J. Inst. Brew.* **117** (1), 67-73.
- Brunner, J. H. (1984). Direct spectrophotometric determination of saponin. *J. Anal. Chem.* **34**(396), 1314-1326.
- Camacho, L. Sierra, C., Campos, R., Guzman, E. and Marcus, D. (1992). Nutritional changes caused by the germination of legumes commonly eaten in Chile. *Arch. Latinoam. Nutr.* **42** (3), 283-290.
- Clementson, C. L., Ileleji, K. E. and Rosentrater, K. A. (2010). Evaluation of measurement procedures used to determine the bulk density of distillers dried grains with solubles. *Trans. Am. Soc. Agric. Biol. Eng.* **53** (2), 485-490.
- Coscueta, E. R., Pintado, M. E., Picó, G. A., Knobel, G., Boschetti, C. E., Malpiedi, L. P. and Nerli, B. B. (2017). Continuous method to determine the trypsin inhibitor activity in soybean flour. *Food Chem.* **214**, 156-161.
- Dahiya, P., Linnemann, A., Van Boekel, M., Khetarpaul, N., Grewal, R. and Nout, M. (2015). Mungbean: Technological and nutritional potential. *Food Sci. Nutr.* **55**(5), 670-688. [doi:10.1080/10408398.2012.671202].
- Dendougui, F. and Schwedt, G. (2004). In vitro analysis of binding capacities of calcium tephatic acid in different food samples. *Eur. Food Res. Technol.* **219**(4), 409-415.
- Deol, J. K. and Bains, K. (2010). Effect of household cooking methods on nutritional and anti-nutritional factors in green cowpea (*Vigna unguiculata*) pods. *J. Food Sci. Technol.* **47** (5), 579-581. [doi:10.1007/s13197-010-0112-3].
- Deraz, S. F. and Khalil, A. A. (2008). Strategies to improve protein quality and reduce anti-nutritional factor of mungbean. *Food.* **2** (1), 25-38. (2008). "Global Science Books".
- Deshpande, S. S., Sathe, S. K., Salunkhe, D. K. and Cornforth, D. P. (1982). Effects of dehulling on phytic acid, polyphenols, and enzyme inhibitors of dry beans (*Phaseolus vulgaris* L.). *J. Food Sci.* **47**(6), 1846-1850. [doi:10.1111/j.1365-2621.1982.tb12896.x].
- Diouf, A., Sarr, F., Sene, B., Ndiaye, C., Fall, S. M. and Ayessou, N. C. (2019). Pathways for reducing anti-nutritional factors: Prospects for *Vigna unguiculata*. *J. Nutri. Health Food Sci.* **7** (2), 1-10. [doi:10.15226/jnhfs.2019.001157].
- Dorsch, J. A., Cook, A., Young, K. A., Anderson, J. M., Bauman, A. T., Volkmann, C. J., Murthy, P. P. N. and Raboy, V. (2003). Seed phosphorus and inositol phosphate phenotype of barley low phytic acid genotypes. *Phytochem.* **62**(5), 691-706.
- El-Adawy, T. A. (2002). Nutritional composition and anti-nutritional factors of chickpeas (*Cicer arietinum* L.) undergoing different cooking methods and germination. *Plant Food Human Nutr.* **57** (1), 83-97.
- El-Gohery, S. S. (2021). Effect of different treatments on nutritional value of lima bean (*Phaseolus lunatus*) and its utilization in biscuit manufacture. *Food Nutr. Sci.* **12**(4), 372-391. [doi:10.4236/fns.2021.124029].
- Emmanuel, E. and Deborah, S. (2018). Phytochemical and anti-nutritional studies on some commonly consumed fruits in Ilokoja, Kogi state of Nigeria. *Gen. Med. Open.* **2** (3), 1-5. [doi:10.15761/GMO.1000135].
- Essack, H., Odhav, B. and Mellem, J. J. (2017). Screening of traditional south African leafy vegetables for specific anti-

- nutritional factors before and after processing. *Food Sci. Technol.* **37**, 462-471. [doi:10.1590/1678-457X.20416].
- Etsuyankpa, M. B., Gimba, C. E., Agbaji, E. B., Omoniyi, K. I., Ndamitso, M. M. and Mathew, J. T. (2015). Assessment of the effects of microbial fermentation on selected anti-nutrients in the products of four local cassava varieties from Niger state, Nigeria. *Am. J. Food Sci. Technol.* **3** (3), 89-96.
- Fardet, A. (2010). New hypotheses for the health-protective mechanisms of whole-grain cereals: what is beyond fibre? *Nutr. Res. Rev.* **23** (1), 65-134.
- Enneking, D., & Wink, M. (2000). Towards the elimination of anti-nutritional factors in grain legumes. In *Linking research and marketing opportunities for pulses in the 21st century: Proceedings of the third international food legumes research conference* (pp. 671-683). Dordrecht: Springer Netherlands.
- Galati, A., Oguntoyinbo, F. A., Moschetti, G., Crescimanno, M. and Settanni, L. (2014). The cereal market and the role of fermentation in cereal-based food production in Africa. *Food Rev. Int.* **30** (4), 317-337.
- Gemedo, H. F. and Ratta, N. (2014). Antinutritional factors in plant foods: Potential health benefits and adverse effects. *Int. J. Nutr. Food Sci.* **3**(4), 284-289. [doi:10.11648/j.ijnfs.20140304.18].
- Ghavidel, R. A. and Prakash, J. (2007). The impact of germination and dehulling on nutrients, antinutrients, in vitro iron and calcium bioavailability and in vitro starch and protein digestibility of some legume seeds. *Food Sci. Technol.* **40**(7), 1292-1299.
- Gibson, R. S., Bailey, K. B., Gibbs, M. and Ferguson, E. L. (2010). A review of phytate, iron, zinc, and calcium concentrations in plant-based complementary foods used in low-income countries and implications for bioavailability. *Food Nutr.* **31** (2), 134-146.
- Grewal, A. and Jood, S. (2006). Effect of processing treatments on nutritional and antinutritional contents of green gram. *J. Food Biochem.* **30**(5), 535-546. [doi:10.1111/j.1745-4514.2006.00080.x].
- Halil, U., Esref, I., Nazmi, I. and Yucel, T. (2008). Geometric and mechanical properties of mung bean (*Vigna Radiata* L.) grain: effect of moisture. *Int. J. Food Prop.* **11** (3), 585-599. [doi:10.1080/10942910701573024].
- Hamid, R. and Masood, A. (2009). Dietary lectins as disease causing toxicants. *Pak. J. Nutr.* **8**(3), 293-303.
- Haminiuk, C. W. I., Maciel, G. M., Plata-Oviedo, M. S. V. and Peralta, R. M. (2012). Phenolic compounds in fruits – an overview. *Int. J. Food Sci. Technol.* **47**(10), 2023-2044.
- Heuze, V., Tran, G., Bastianelli, D. and Lebas, F. (2015). Mung bean (*Vigna radiata*). Feedipedia. Retrieved from <http://www.feedipedia.org/node/235>. (Last update July 3, 2015).
- Hirota, M., Ohmuraya, M. and Baba, H. (2006). The role of trypsin, trypsin inhibitor, and trypsin receptor in the onset and aggravation of pancreatitis. *J. Gastroenterol.* **41**(9), 832-836.
- Holzhauser, T., Wackermann, O., Ballmer-Weber, B. K., Bindeslev-Jensen, C., Scibilia,

- J., Perono-Garoffo, L., Utsumi, S., Poulsen, L. K. and Vieths, S. (2009). Soybean (*Glycinemax*) allergy in Europe: Glym5 ( $\beta$ -conglycinin) and Glym6 (glycinin) are potential diagnostic markers for severe allergic reactions to soy. *J. Allergy Clin. Immunol.* **123** (2), 452-458.
- Hou, D., Yousaf, L., Xue, Y., Hu, J., Wu, J., Hu, X., Feng, N. and Shen, Q. (2019). Mungbean: Bioactive polyphenols, polysaccharides, peptides and health benefits. *Nutr.* **11**(6). [doi:10.3390/nu11061238].
- Hotz, C., & Gibson, R. S. (2007). Traditional food-processing and preparation practices to enhance the bioavailability of micronutrients in plant-based diets. *The Journal of Nutrition*, **137**(4), 1097-1100.
- Hwang, D. L., Foard, D. E. and Wei, C. H. (1977). A soybean trypsin inhibitor. Crystallization and x-ray crystallographic study. *J. Bio. Chem.* **252**(3), 1099-1101.
- Imran, K., Khan, A. A., Inam, I. and Ahmad, F. (2016). Yield and yield attributes of Mungbean (*Vigna radiata* L.) cultivars as affected by phosphorous levels under different tillage systems. *Cogent Food Agric.* **2**(1), 115-982. [doi:10.1080/23311932.2016.1151982].
- Jood, S., Chauhan, B. M. and Kapoor, A. C. (1987). Polyphenols of chickpea and black gram as affected by domestic processing and cooking methods. *J. Sci. Food Agric.* **39**(2), 145-149.
- Kakati, P., Deka, S. C., Kotoki, D. and Saikia, S. (2010). Effect of traditional methods of processing on the nutrient contents and some antinutritional factors in newly developed cultivars of green gram [*Vigna radiata* (L.) Wilczek] and black gram [*Vigna mungo* (L.) Hepper] of Assam, India. *Int. Food Res. J.* **17** (2), 377-384.
- Karimi, J., Allahyari, M. and Bandani, A. R. (2012). "Lectins and Their Roles in Pests Control". IntechOpen. Iran. [ISBN 953510490X].
- Kataria, A., Chauhan, B. M. and Punia, D. (1989a). Antinutrients and protein digestibility (in vitro) of mung bean as affected by domestic processing and cooking. *Food Chem.* **32**(1), 9-17. [doi:10.1016/0308-8146(89)90003-4].
- Kataria, A., Chauhan, B. M. and Punia, D. (1989b). Antinutrients in amphidiploids (black gram  $\times$  mung bean): Varietal differences and effect of domestic processing and cooking. *Plant Food Hum. Nutr.* **39** (3), 257-266.
- Kataria, A., Chauhan, B. M., & Gandhi, S. (1989). Effect of domestic processing and cooking on the antinutrients of black gram. *Food Chemistry*, **32**(3), 285-293.
- Kaur, D., Dhawan, K., Rasane, P., Singh, J., Kaur, S., Gurumayum, S., Singhal, S., Mehta, C. M. and Kumar, V. (2020). Effect of different pretreatments on antinutrients and antioxidant of rice bean (*Vigna umbellata*). *Acta Univ. Cibiniensis, Ser. E: Food Technol.* **24** (1). [doi:10.2478/auaft-2020-0003].
- Klomklo, S., Benjakul, S., Kishimura, H. and Chaijan, M. (2011). Extraction, purification and properties of trypsin inhibitor from Thai mung bean (*Vigna radiata* (L.) R. Wilczek). *Food Chem.* **129**(4), 1348-1354. [doi:10.1016/j.foodchem.2011.05.029].
- Krezanoski, J. Z. (1966). Tannic acid: chemistry, analysis, and toxicology: An episode in the pharmaceuticals of radiology. *Radiol.* **87** (4), 655-657. [doi:10.1148/87.4.655].
- Kumar, K. G., Venkataraman, L. V., Java, T. V. and Krishnamurthy, K. S. (1978). Cooking characteristics of some germinated legumes: changes in phytins,  $Ca^{++}$ ,

- Mg<sup>++</sup> and pectins. *J. Food Sci.* **43** (1), 85-88.
- Kumar, R., Rao, P. V. K. J. and Edukondalu, L. (2017). Physical properties of maize grains. *Int. J. Agric. Sci.* **9**(27), 4338-4341.
- Kumar, Y., Basu, S., Goswami, D., Devi, M., Shivhare, U. S. and Vishwakarma, R. K. (2021). Anti-nutritional compounds in pulses: Implications and alleviation methods. *Legum. Sci.*, 111. [doi:10.1002/leg3.111].
- Lam, S. K. and Ng, T. B. (2011). Lectins: production and practical applications. *Appl. Microbiol. Biotechnol.* **89**, 45-55. [doi:10.1007/s00253-010-2892-9].
- Lambrides, C. J. and Godwin, I. D. (2006). Mung bean. **3**, 69- 90. [Cited in K. Chittarajan. "Genome Mapping and Molecular Breeding in Plants". Feedipedia. USA].
- Landete, J. M. (2012). Updated knowledge about polyphenols: functions, bioavailability, metabolism, and health. *Crit. Rev. Food Sci. Nutr.* **52**(10), 936-948.
- Liener, I. E. (1994). Implications of anti-nutritional components in soybean foods. *Food Sci. Nutr.* **34**(1), 31-67. [doi:10.1080/10408399409527649].
- Luo, Y. W. and Xie, W. H. (2013). Effect of different processing methods on certain anti-nutritional factors and protein digestibility in green and white faba bean (*Vicia faba* L.). *J. Food.* **11** (1), 43-49.
- Machaiiah, J. P., Pednekar, M. D. and Thomas, P. (1999). Reduction in flatulence factors in mung beans (*Vigna radiata*) using low-dose  $\gamma$  irradiation. *J. Sci. Food Agric.* **79**(5), 648-652.
- Mello, J. P. F. (2000). "Farm Animal Metabolism and Nutrition". CABI. Scotland. [ISBN 0851993788].
- Mendoza, E. M. T., Barroga, C. F., Rodriguez, F. M., Revilleza, M. J. and Laurena, A. C. (1988). Factors affecting the nutritional quality and acceptability of mung bean. *Trans. Nat. Acad. Sci. Technol.* **10**, 305-322.
- Mogotsi, K. K. (2006). *Vigna radiata* (L.) R. Wilczek. [Cited in M. Brink and G. Belay. "Cereals and Pulses". Netherlands].
- Mubarak, A. E. (2005). Nutritional composition and anti-nutritional factors of mungbean seeds (*Phaseolus aureus*) as affected by some home traditional processes. *Food Chem.* **89**, 489-495. [doi:10.1016/j.foodchem.2004.01.007].
- Mueller-Harvey, I. (2001). Analysis of hydrolysable tannins. *Anim. Feed Sci. Technol.* **91** (1-2), 3-20. [doi:10.1016/S0377-8401(01)00227-9].
- Muzquiz, M., Varela, A., Burbano, C., Cuadrado, C., Guillamón, E. and Pedrosa, M. M. (2012). Bioactive compounds in legumes: pronutritive and antinutritive actions. Implications for nutrition and health. *Phytochem. Rev.* **11**(2), 227-244.
- Nair, R. M., Yang, R., Easdown, W. J., Thavarajah, D., Thavarajah, P., Hughes, J. and Keatinge, J. D. H. (2013). Biofortification of mungbean (*Vigna radiata*) as a whole food to enhance human health. *J. Sci. Food Agric.* **93** (8), 1805-1813.
- Neupane, R. K., Sah, R. P., Neupane, R., Bhattarai, E. M. and Sah, M. P. (2003). "Varietal Investigation on Mungbean in Nepal". National Grain Legumes Research Program, Nepal. [Accessed 3 June, 2002].
- Ngoc, L. E., Thanh, T. H., Nguyet, T. M. and Linh, T. K. (2021). Impact of different treatments on chemical composition, physical, anti-

- nutritional, antioxidant characteristics and in vitro starch digestibility of green-kernel black bean flours. *Food Sci. Technol.* [doi:10.1590/fst.31321].
- Nikolopoulou, D. and Grigorakis, K. (2008). Nutritional and antinutritional composition of legumes and factors affecting it. *Food Sci. Technol.*, 105-170.
- Nithya, U., & Sarita, M. (2011). Effect of germination and fermentation on the antioxidant and anti-nutritional content of pearl millet (*Pennisetum glaucum* L.). *International Food Research Journal*, **18**(3), 1099-1104.
- Noonan, S.C. and Savage, G.P. (1999). Oxalic acid and its effects on humans. *Asia Pac. J. Clin. Nutr.* **8** (1), 64-74.
- Nwokolo, E. and Smartt, J. (1996). "Food and Feed from Legumes and Oilseeds". Chapman and Hall. London. [ISBN 978-1-4613-0433-3].
- Oburuoga, A.C. and Anyika, J.U. (2012). Nutrient and antinutrient composition of mung bean, acha and crayfish. *Pak. J. Nutr.* **11** (9), 814-844.
- Ogodo, A. C., Agwaranze, D. I., Aliba, N. V., Kalu, A. C. and Nwaneri, C. B. (2019). Fermentation by lactic acid bacteria consortium and its effect on antinutritional factors in maize flour. *J. Biol. Sci.* **19**(1), 17-23.
- Oladimeji, M. O., Akindahunsi, A. A. and Okafor, A. F. (2000). Investigation of the bioavailability of zinc and calcium from some tropical tubers. *Nahrung*. **44**(2), 136-137.
- Onwurafor, E. U., Onweluzo, J. C. and Ezeoke, A. M. (2014). Effect of fermentation methods on chemical and microbial properties of mung bean (*Vigna radiata*) flour. *Nig. Food J.* **32** (1), 89-96.
- Ouchemoukh, S., Amessis-Ouchemoukh, N., Gómez-Romero, M., Aboud, F., Giuseppe, A., Fernández-Gutiérrez, A. and Segura-Carretero, A. (2017). Characterisation of phenolic compounds in Algerian honeys by RP-HPLC coupled to electrospray time-of-flight mass spectrometry. *Food Sci. Technol.* **85**, 460-469. [doi:10.1016/j.lwt.2016.11.084].
- Patel and Dutta, S. (2018). Effect of soaking and germination on anti-nutritional factors of garden cress, wheat and finger millet. *Int. J. Pure App. Biosci.* **6** (5), 1076-1081. [doi:10.18782/2320-7051.7006].
- Promuthai, C., Huang, L., Glahn, R. P., Welch, R. M., Fukai, S. and Rerkasem, B. (2006). Iron (Fe) bioavailability and the distribution of anti-Fe nutrition biochemicals in the unpolished, polished grain and bran fraction of five rice genotypes. *J. Sci. Food Agric.* **86** (8), 1209-1215.
- Rackis, J.J., Wolf, W.J. and Baker, E.C. (1986). Protease inhibitors in plant foods: content and inactivation. *Adv. Exp. Med. Biol.* **199**, 299-347. [doi:10.1007/978-1-4757-0022-019].
- Ramakrishnaiah, N. and Kurien, P.P. (1983). Variabilities in the dehulling characteristics of pigeon pea (*Cajanus cajan* L.) cultivars. *J. Food Sci. Technol.* **20** (6), 287-291.
- Randhir, R., Lin, Y. and Shetty, K. (2004). Stimulation of phenolics, antioxidant and antimicrobial activities in dark germinated mung bean sprouts in response to peptide and phytochemical elicitors. *Process Biochem.* **39**(5), 637-646.
- Ranganna, S. (1986). "Handbook of Analysis and Quality Control for Fruit and

- Vegetable Products". Tata McGraw-Hill Education. New Delhi. [ISBN 0074518518].
- Rao, A. V. and Sung, M. K. (1995). Saponins as anticarcinogens. *J. Nutr.* **125** (3), 717-724. [doi:10.1093/jn/125.suppl.3.711S].
- Rather, T. A., Malik, M. A. and Dar, A. H. (2016). Physical, milling, cooking, and pasting characteristics of different rice varieties grown in the valley of Kashmir India. *Cogent Food Agric.* **2**(1). [doi:10.1080/23311932.2016.1178694].
- Reddy, N.R., Pierson, M.D., Sathe, S.K. and Salunkhe, D. K. (1989). "Phytates in Cereals and Legumes". CRC Press. India. [ISBN 0849361087].
- Salunkhe, D.K., Jadhav, S.J., Kadam, S.S., Chavan, J.K. and Luh, B.S. (1983). Chemical, biochemical, and biological significance of polyphenols in cereals and legumes. *Crit. Rev. Food Sci. Nutr.* **17** (3), 277-305.
- Samarajeewa, U., Sen, A. C., Cohen, M. D. and Wei, C. I. (1990). Detoxification of aflatoxins in foods and feeds by physical and chemical methods. *J. Food Prot.* **53**(6), 489-501.
- Samtiya, M., Aluko, R.E. and Dhewa, T. (2020). Plant food anti-nutritional factors and their reduction strategies: An overview. *Food Prod. Process Nutr.* **2**(6). [doi:10.1186/s43014-020-0020-5].
- Sanchez-Monge, R., Lopez-Torrejón, G., Pascual, C.Y., Varela, J., Martín-Esteban, M. and Salcedo, G. (2004). Vicilin and convicilin are potential major allergens from pea. *Clin. Exp. Allergy.* **34** (11), 1747-1753.
- Sasaki, M., Koplin, J. J., Dharmage, S. C., Field, M. J., Sawyer, S. M., McWilliam, V., Peters, R. L., Gurrin, L. C., Vuillermin, P. J. and Douglass, J. (2018). Prevalence of clinic-defined food allergy in early adolescence: The schoolnuts study. *J. Allergy Clin. Immunol.* **141** (1), 391-398.
- Sefa-Dedeh, S. and Stanley, D.W. (1979). The relationship of microstructure of cowpea to water absorption and dehulling properties. *Cereal Chem.* **56**(4), 379-386.
- Shahidi, F. and Ambigaipalan, P. (2015). Phenolics and polyphenolics in foods, beverages and spices: Antioxidant activity and health effects—A review. *J. Funct. Foods.* **18**, 820-897.
- Sharpley, A. N., Chapra, S. C., Wedepohl, R., Sims, J. T., Daniel, T. C. and Reddy, K. R. (1994). Managing agricultural phosphorus for protection of surface waters: Issues and options. *J. Environ. Qual.* **23** (3).
- Shi, J., Arntfield, S. D. and Nickerson, M. (2018). Changes in levels of phytic acid, lectins and oxalates during soaking and cooking of Canadian pulses. *Food Res. Int.* **107**, 660-668.
- Shi, J., Arunasalam, K., Yeung, D., Kakuda, Y., Mittal, G. and Jiang, Y. (2004). Saponins from edible legumes: chemistry, processing, and health benefits. *J. Med. Food.* **7**(1), 67-78. [doi:10.1089/109662004322984734].
- Shrestha, R., Neupane, R. K. and Adhikari, N. P. (2011). Status and future prospects of pulses in Nepal. Presented at Regional Workshop on Pulse Production. NARC, Kathmandu. October 24-25.
- Siddiq, M. and Uebersax, M.A. (2012). "Dry Beans and Pulses: Production, Processing and Nutrition". John Wiley & Sons. USA. [ISBN 1118448286].

- Silverman, G. A., Bird, P., Carrell, R. W., Church, F. C., Coughlin, P. B., Gettins, P. G., Irving, J. A., Lomas, D. A., Luke, C. J. and Moyer, R. W. (2001). The serpins are an expanding superfamily of structurally similar but functionally diverse proteins. *J. Biol. Chem.* **276** (36), 33293-33296.
- Simwaka, J. E., Chamba, M. V., Huiming, Z., Masamba, K. G. and Luo, Y. W. (2017). Effect of fermentation on physicochemical and antinutritional factors of complementary foods from millet, sorghum, pumpkin and amaranth seed flours. *Int. Food Res. J.* **24**(5).
- Singh, U., & Singh, B. (1992). Tropical grain legumes as important human foods. *Economic Botany*, **46**(3), 310-321.
- Singh, A. K., Kumar, P. and Chandra, N. (2013). Studies on seed production of mung beans sown at different dates. *J. Environ. Biol.* **34**, 1007-1011.
- Singh, B., Singh, J. P., Kaur, A. and Singh, N. (2017). Phenolic composition and antioxidant potential of grain legume seeds: A review. *Food Res. Int.* **101**, 1-16. [doi: 10.1016/j.foodres.2017.09.026].
- Singh, J. P., Kaur, A., Singh, N., Nim, L., Shevkani, K., Kaur, H. and Arora, D. S. (2016). In vitro antioxidant and antimicrobial properties of jambolan (*Syzygium cumini*) fruit polyphenols. *Food Sci. Technol.* **65**, 1025-1030.
- Singh, K., Dsouza, M. R. and Yogitha, R. (2015). Nutrient content and in vivo reduction of anti-nutrients of mung bean (*Vigna radiata*) under various processing methods. *J. Chem. Biol. Phy. Sci.* **5** (2), 1627-1638.
- Singleton, V. L., Orthofer, R. and Lamuela-Raventós, R. M. (1999). Analysis of total phenols and other oxidation substrates and antioxidants by means of folin-ciocalteu reagent. *Meth. Enzymol.* **299**, 152-178. [doi: 10.1016/S0076-6879(99)99017-1].
- Sivakumaran, K., Jagath, M. A. and Theja, H. M. (2017). Comparison of contents of phytates and saponins and the effect of processing in some selected edible beans in Sri Lanka. *Int. J. Food Sci. Nutr.* **2** (2), 95-100.
- Skylas, D. J., Molloy, M. P., Willows, R. D., Salman, H., Blanchard, C. L. and Quail, K. J. (2018). Effect of processing on mung bean (*Vigna radiata*) flour nutritional properties and protein composition. *J. Agric. Sci.* **10**(11), 16-28. [doi: 10.5539/jas.v10n11p16].
- Smits, M., Le, T., Welsing, P., Houben, G., Knulst, A. and Verhoeckx, K. (2018). Legume protein consumption and the prevalence of legume sensitization. *Nutr.* **10**(10), 1545.
- Soetan, K. O. (2008). Pharmacological and other beneficial effects of antinutritional factors in plants - A review. *Afri. J. Biotechnol.* **7**(25).
- Soetan, K. O. and Oyewole, O. E. (2009). The need for adequate processing to reduce the anti-nutritional factors in plants used as human foods and animal feeds: A review. *Afri. J. Food Sci.* **3** (9), 223-232. [doi: 10.5897/AJFS.9000293].
- Subbulakshmi, G., Ganesh Kumar, K. G. and Venkataraman, L. V. (1976). Effect of germination on the carbohydrates, proteins, trypsin inhibitor, amylase inhibitor and hemagglutinin in horse gram and moth bean. *Nutr. Rep. Int.* **13** (1), 19-31.
- Suseelan, K. N., Bhatia, C. R. and Mitra, R. (1997). Characteristics of two major lectins from mung bean (*Vigna radiata*) seeds. *Plant Foods Hum. Nutr.* **50**(3), 211-

222.[doi:10.1007/bf02436058]

- Tajoddin, M., Manohar, S. and Lalitha, J. (2014). Effect of soaking and germination on polyphenol content and polyphenol oxidase activity of mung bean (*Phaseolus aureus*) cultivars differing in seed color. *Int. J. Food Prop.* **17**(4), 782-790. [doi:10.1080/10942912.2012.654702].
- Tajoddin, M., Shinde, M. and Lalitha, J. (2010). Polyphenols of mung bean (*Phaseolus aureus* L.) cultivars differing in seed coat color: Effect of dehulling. *J. New Seeds*. **11**(4), 369-379. [doi:10.1080/1522886X.2010.520146].
- Tang, D., Dong, Y., Ren, H., Li, L. and He, C. (2014). A review of phytochemistry, metabolite changes, and medicinal uses of the common food mung bean and its sprouts (*Vigna radiata*). *Chem. Cent. J.* **8** (1), 1-9.
- Unal, H., Isik, E., Izli, N. and Tekin, Y. (2008). Geometric and mechanical properties of mung bean (*Vigna radiata*) grain: Effect of moisture. *Int. J. Food Prop.* **11** (3), 585-599. [doi:10.1080/10942910701573024].
- Vagadia, B. H., Vanga, S. K. and Raghavan, V. (2017). Inactivation methods of soybean trypsin inhibitor: A review. *Trends Food Sci. Technol.* **64**, 115-125.
- Vanderven, C., Matser, A. M. and Vandenberg, R. W. (2005). Inactivation of soybean trypsin inhibitors and lipoxygenase by high-pressure processing. *J. Agric. Food Chem.* **53** (4), 1087-1092.
- Vasconcelos, I. M. and Oliveira, J. T. A. (2004). Antinutritional properties of plant lectins. *Toxicol.* **44**(4), 385-403. [doi:10.1016/j.toxicol.2004.05.005].
- Vidal-Valverde, C., Frias, J., Estrella, I., Gorospe, M. J., Ruiz, R. and Bacon, J. (1994). Effect of processing on some antinutritional factors of lentils. *J. Agric. Food Chem.* **42**(10), 2291-2295.
- Vijayakumari, K., Siddhuraju, P., Pugalenthi, M. and Janardhanan, K. (1998). Effect of soaking and heat processing on the levels of antinutrients and digestible proteins in seed of *Vigna aconitifolia* and *Vigna sinensis*. *Food Chem.* **63** (2), 259-264.
- Virginia, P., Swati, V. and Ajit, P. (2012). Effect of cooking and processing methods on oxalate content of green leafy vegetables and pulses. *Asian J. Food Agro-Ind.* **5** (4), 311-314.
- Wilcox, J. R., Premachandra, G. S., Young, K. A., and Raboy, V. (2000). Isolation of high seed inorganic P, low-phytate soybean mutants. *Crop Sci.* **40** (6), 1601-1605. doi: 10.2135/cropsci2000.4061601x.
- Wyss, M., Brugger, R., Kronenberger, A., Rémy, R., Fimbel, R., Oesterhelt, G., Lehmann, M. and Van Loon, A. (1999). Biochemical characterization of fungal phytases (myo-inositol hexakisphosphate phosphohydrolases): Catalytic properties. *Appl. Environ. Microbiol.* **65** (2), 367-373.
- Yuan, F. J., Zhu, D. H., Deng, B., Fu, X. J., Dong, D. K., Zhu, S. L., et al. (2009). Effects of two low phytic acid mutations on seed quality and nutritional traits in soybean (*Glycine max* L. Merr.). *J. Agric. Food Chem.* **57** (9), 3632-3638. doi: 10.1021/jf803862a.
- Yadav, L. and Bhatnagar, V. (2017). Effect of soaking and roasting on nutritional and antinutritional components of chickpea (Pratap-14). *Agric. Plant Sci.* [doi:10.13140/RG.2.2.17116.41609].
- Yasmin, A., Zeb, A., Khalil, A. W., Paracha, G. M. and Khattak, A. B. (2008). Effect of processing on antinutritional factors of red kidney bean (*Phaseolus vulgaris*) grains. *Food Bioproc.*

*Technol.* **1** (4), 415-419.

Zia-ur-rehman, Z., Islam, M. and Shah, W.H. (2003). Effect of microwave and conventional cooking on insoluble dietary fibre components of vegetables. *Food Chem.* **80** (2), 237-240.

UNDER PEER REVIEW