

## Original Research Article

### Screening for Resistant Genes and Plasmid Curing reagent Profile of *Salmonella enterica* and *Listeria monocytogenes* from Seafood Sold in Rivers State, Nigeria

Comment [U1]: Title needs modification as *Salmonella enterica* and *Listeria monocytogenes* from Seafood: Plasmid Curing reagent Profiles and drug resistance gene Screening, Rivers State, Nigeria

## ABSTRACT

**Preamble:** Plasmid curing has been a successful technique in reducing resistant bacteria and controlling antibiotic resistance which promote pathogenicity of an organism.

**Aim:** This study is focused on detecting resistant genes and plasmid curing profile of *Salmonella enterica* and *Listeria monocytogenes* from seafood sold in Rivers State, Nigeria.

**Study design:** The work run from June 2023 to December 2023

Comment [U2]: It is not the study design but it is the time frame for your study. Please clearly indicate your study design

**Methodology:** A total of one hundred and twenty-six (126) raw and parboiled samples of *Crassostrea gasar* (Oyster) (42), *Buccinum undatum* (Whelks) (42) and *Panaeus monodon* (Prawn) (42) were purchased from three (3) Local Government Area markets and subjected to standard conventional methods, molecular screening and plasmid curing.

Comment [U3]: What is the standard conventional method?, it is not clear, specify the conventional technique used for your study

**Results:** The bacterial isolates were identified molecularly as: *Salmonella enterica*-AM04528, *Salmonella bongori*-NCTC12419, *Salmonella enterica*-KKP3882, *Listeria ivanovii*-PM-44, *Listeria monocytogenes*-HN1, *Listeria monocytogenes*-F6540, *Salmonella enterica*-19\_85, *Salmonella enterica*-KKP1761, *Listeria monocytogenes*-NITRR/R1, *Salmonella enterica*-777SA01, *Listeria monocytogenes*-HR27 and *Listeria monocytogenes*-FC3. The resistant genes were present as  $bla_{TEM}$  (58.33%) and  $bla_{SHV}$  (91.67%) in *Salmonella enterica* and *L. monocytogenes* isolates. Plasmid curing with Acridine orange (An intercalating agent) reversed the resistant trait (100%) in the twelve (12) most resistant *Salmonella enterica* and *L. monocytogenes* isolates after susceptibility testing.

Comment [U4]: The methodology you were used to isolate the salmonella and Listeria species not stated here. In addition, you should clearly state the molecular technique employed, the reagent used for plasmid curing of your bacterial isolates should also clearly stated.

**Conclusion:** This study provides valuable insight into the genetic mechanism of antibiotic resistance of the two pathogens and highlights the potential of plasmid curing as a therapeutic approach and proper management of seafood.

Comment [U5]: Writing the bacterial isolate code in the abstract section is not important

**Keywords:** Screening, Resistant genes, Plasmid curing, *Salmonella enterica*, *Listeria monocytogenes* and Seafood

## INTRODUCTION

Human pathogenic bacteria associated with seafoods such as fishes, oysters and prawns are known for their ~~causation-cause~~ of human illnesses when consumed raw or undercooked. Pathogenic bacteria are naturally found in the environment inhabited by seafood. Anthropogenic contamination is responsible for introducing diarrheagenic bacterial pathogens such as *Escherichia coli*, *Listeria monocytogenes* and *Salmonella enterica*, some of which could be highly resistant to multiple drugs due to their human and animal origin. The use of antimicrobials in fish farms is also responsible for

developing antimicrobial resistance in fish-borne human pathogens. The incidence of multidrug-resistant human pathogenic bacteria in wild-caught and farmed shrimp offers a formidable challenge in ensuring food safety and preventing the global spread of antibiotic resistant bacteria via seafood (Espejo *et al.*, 2017). Plasmid profile analysis is one of the oldest molecular techniques used for epidemiological investigation. In this technique, plasmid DNAs are extracted from bacteria and the DNA is separated on agarose gel electrophoresis. It is easy to perform this technique and to interpret the results except that plasmids are mobile extrachromosomal elements that can spontaneously be lost or readily acquired by bacteria and thus isolates that are related epidemiologically can easily display different plasmid profiles (Trinidad *et al.*, 2003). The same researchers also reported that plasmids have transposons which may contain resistant determinants that can readily be lost or acquired, quickly changing the composition of plasmid DNA. Plasmids exist in a variety of spatial conformations (linear, nicked and supercoiled) which result in different migration velocities when submitted to agarose gel electrophoresis and this affects the reproducibility of this technique (Trinidad *et al.*, 2003).

Comment [U6]: It is more specific view provide general induction

Resistance plasmids (R plasmids) have been reported to be the most frequent cause of antibiotic resistance in most bacteria including the *Salmonella* and *Listeria* species which have exhibited resistance to different antibiotics such as beta-lactam antibiotics, aminoglycosides and fluoroquinolone (Carattoli, 2013; Zhang *et al.*, 2019). They allow the movement of genetic materials ~~including antimicrobial-antimicrobial~~-resistant genes between bacterial species and genera through gene exchange processes thereby causing a rapid spread of ~~the~~-antibiotic resistance (Carattoli, 2013; Daneman *et al.*, 2013). The ~~plasmid-plasmid~~-associated resistance can be gotten rid of by plasmid curing, which occurs spontaneously during bacterial cell division, or by treating the bacteria with some physical or chemical reagents such as acridine orange or ethidium bromide (Elias *et al.*, 2013). The reagents can cause a single nick in the plasmid, thereby, initiating its relaxation and subsequently ~~affects~~-~~affecting~~its replication. Application of the curing assay may help to mitigate the spread of ~~the~~ antibiotic resistance encoded by R-plasmid (Letchumanan *et al.*, 2015) ~~and~~ consequently stop the spread of the antibiotic resistance (Burusso *et al.*, 2004). Hence, this research is

focused on detecting resistant genes and plasmid curing reagent profile of *Salmonella enterica* and *Listeria monocytogenes* from seafood sold in Rivers State, Nigeria

## **MATERIALS AND METHODS**

### **Description of ~~study~~ Study Area**

Three markets in Rivers State, Kaa market in Khana Local Government Area, Creek Road market in Port Harcourt Local Government Area (PHALGA), and Bakana Market in Degema Local Government Area, were used for the study.

**Comment [U7]:** The study area lacks through description, no study area figure?, please provide brief description of your study area by incorporating the study map.

### **Sample Collection**

One hundred and twenty-six (126) samples of raw and parboiled seafoods, including Whelks (*Buccinum undatum*), Oysters (*Crassostrea gasar*), and Prawns (*Penaeus monodon*), were purchased from three markets, placed in sterile polythene bags, then put in ice chests, and aseptically transported to the Department of Microbiology laboratory at Rivers State University, Port Harcourt, for bacteriological analysis after identification by Prof. G.C. Akani in the Department of Animal and Environmental Biology, Rivers State University.

### **Microbiological Analysis**

#### **Bacterial Isolation and Identification**

*Salmonella* and *Listeria* were isolated by picking representative or discreet colonies based on their size, margin, surface, elevation, texture, transparency and coloration (blackish and Grey-green) on *Salmonella-Shigella* agar and a selective medium Polymyxin Acriflavin Lithium-chloride Ceftazidime Esculin Mannitol (PALCAM) agar supplemented with Listeria Selective Supplement II (FD063) respectively. Identification of the organism was further conducted through biochemical such as citrate utilization test, methyl red, Catalase, Coagulase, indole test, Voges Proskauer test, sugar fermentation test and specifically hydrogen sulphide production to confirm *Salmonella enterica* (Cheesbrough, 2005).

**Comment [U8]:** Some biochemical tests additionally required to identify salmonella enterica species, like urease test etc.

### **Molecular Studies**

#### **DNA Extraction and Quantification**

Boiling method was used for the extraction process as described by Bell *et al.* (1998). Pure culture of the *Salmonella* and *Listeria* isolate was put in Luria-Bertani (LB) Broth and incubated at 37°C. Zero point five milliliters (0.5ml) of the broth culture of the *Salmonella* and *Listeria* in Luria Bertani (LB) were dispensed into properly labeled Eppendorf tubes and ~~filling-filled~~ to mark with normal saline and ~~was-were~~ centrifuged at 14000rpm for 3 minutes and the supernatant was decanted leaving the DNA at the base. This process was repeated 3 times. The cells were re-suspended in 500ul of normal saline and heated at 95°C for 20 min. The heated bacterial suspension was cooled on ice (About 10minutes) and spun for 3 min at 14000rpm. The supernatant containing the DNA was transferred to a 1.5ml micro-centrifuge tube and stored at -20°C for other down-stream reactions (Bell *et al.*, 1998). The extracted DNA was quantified by using the Nanodrop 1000 Spectrophotometer as described by Olsen and Marrow (2012).

#### Amplification 16S rRNA

The 16srRNA Amplification was carried out using an ABI 9700 Applied Biosystems, thermal Cycler, as described by Srinivasan *et al.* (2015). The 16s rRNA region of the rRNA gene of the bacterial isolates ~~were-was~~ amplified using the forward primer; 27F: 5'-AGAGTTTGATCMTGGCTCAG-3' and Reverse primer; 1492R: 5'-CGGTTACCTTGTTACGACTT-3' and to a final volume of 50 µL for 35 cycles. The PCR mix includes: (Taq polymerase, DNTPs, MgCl<sub>2</sub>), the primers at a concentration of 0.5µM and the extracted DNA as template, Buffer 1X and water. The PCR conditions were as follows: Initial denaturation, 95°C for 5 minutes; denaturation, 95°C for 30 seconds; annealing, 52°C for 30 seconds; extension, 72°C for 30 seconds for 35 cycles and final extension, 72°C for 5 minutes. The product was resolved on a 1% agarose gel at 130V for 30 minutes and visualized on a blue light trans-illuminator for a 1500bp amplicons (Srinivasan *et al.*, 2015).

Comment [U9]: Please check it µL or µM ?

#### Amplification of bla<sub>TEM</sub> and bla<sub>SHV</sub> genes

The bla<sub>TEM</sub> and bla<sub>SHV</sub> genes from the *Salmonella enterica* and *Listeria monocytogenes* isolates were ~~detected~~ amplified using the TEM-F: 5'-ATAAAATTCTTGAAGACGAAA-3' and TEM-R: 5'-GACAGTTACCAATGCTTAATCA-3' and SHVF: 5'-

GGGTTATTCTTATTTGTCGC-3' and SHVR: 5'-TTAGCGTTGCCAGTGCTC-3' primers on ABI 9700 Applied Biosystems thermal cycler at a final volume of 50 micro-litres for 35 cycles. The PCR mix included: The X2 Dream Taq Master Mix supplied by Inqaba, South Africa (Taq polymerase, DNTPs, MgCl), the primers at a concentration of 0.4M and 50ng of the extracted DNA as template. The PCR conditions were as follows: Initial denaturation, 95°C for 5 minutes; denaturation, 95°C for 30 seconds; annealing, 58°C for 30 seconds; extension, 72°C for 30 seconds for 35 cycles and final extension, 72°C for 5 minutes. The product was resolved on a 1% agarose gel at 120V for 25 minutes and visualized on a UV trans-illuminator for a 500bp and 928bp product size (Bell *et al.*, 1998).

### **DNA Sequencing**

The Big-Dye Terminator kit on a 3510 ABI sequencer was used for sequencing of the amplified products. The sequencing was done at a final volume of 10ul, the components included 0.25ul BigDye® terminator v1.1/v3.1, 2.25ul of 5 x Big-Dye sequencing buffer, 10uM Primer PCR primer, and 2-10ng PCR template per 100bp. The sequencing condition were as follows; 32 cycles of 96°C for 10s, 55°C for 5s and 60°C for 4minutes (Srinivasan *et al.*, 2015).

### **Phylogenetic Analysis**

Similar sequences were downloaded from the National Center for Biotechnology Information (NCBI) database using BLASTN prior to the edition of the obtained sequences using the bioinformatics algorithm Trace edit. MAFFT ~~were-was~~ used to align these sequences. The evolutionary history was inferred using the Neighbor Joining method in MEGA 6.0 (Saitou and Nei, 1987). The evolutionary distances were computed using the Jukes-Cantor method (Jukes and Cantor 1969).

### **Plasmid Curing using Acridine Orange as Curing Agent**

The curing assay was carried out by aseptically mixing 0.5ml of acridine orange solution with 1ml of Mueller Hinton broth, each in a sterilized test tube. A loopful of the pure colony of each resistant isolate was inoculated into the test tube containing the mixture and then agitated carefully and incubated overnight at 37°C. From each of the plasmid

curing aliquots and was streaked aseptically, onto a freshly prepared Brain Heart Infusion agar plate and incubated overnight at 37°C (Zhang, *et al.*, 2012; Vengadesh *et al.*, 2015).

### Molecular Screening of the Isolates for Plasmid after ~~the~~ Curing Assay

A colony was picked from the Brain Heart Infusion cultures of the isolates and inoculated into ~~the~~ a 200µl solution containing 100mM glucose, 50mM Tris hydrochloride (pH 8), 10mM EDTA. The mixture was incubated at 37°C. The mixture was then treated with 50µl lysozyme, 400 µl of 1% sodium dodecyl sulphate in 0.2N NaOH. Lastly, 300µl of 30% potassium acetate was added and ~~were~~ incubated in ice for 5min and then centrifuged at 5000RPM for 5min. ~~the~~ **The supernatant was pipetted out and mixed with an equal volume of isopropanol and allowed for 5min-----please finish it doesn't make sense.** Then 100µl was pipetted carefully from the upper part of the supernatant into another Eppendorf tube and used as the plasmid. The extracted plasmid (10µl) was casted into 1% agarose gel, containing acridine orange an intercalating dye and allowed to run for 30min under electrophoresis. The gel was examined under UV light documentation system (BioDoc-It™) for bands (above 500bp) (Olukoya and Oni, 1990).

Formatted: Highlight

**Comment [U10]:** It is totally unacceptable, the extracted plasmid DNA should be amplified using oligo-nucleotide primers used previously for the detection of drug resistance genes in both Salmonella and listeria isolates, your intension is the assessing the curing capacity of the two curing reagents, if so you should do intense molecular work on the salmonella and Listeria isolates after application of curing reagents.

### Determination of Isolates for Antibiotics Susceptibility Pattern after Plasmid Curing

A loopful of the suspension after curing was streaked aseptically onto a freshly prepared nutrient agar plates and incubated overnight at 37°C. Subsequently, from the culture plates suspensions were prepared in sterilized normal saline and standardized to 0.5 McFarland scale. Then, 0.1ml of the standardized inocula were spread each onto Mueller Hinton agar plate and the **antibiotics resisted** previously by the isolates were placed onto the agar plates and then incubated at 37°C for 24hours. The zone of inhibition around the antibiotic discs were recorded and interpreted sensitive, intermediate and resistance according to the Clinical Laboratory Standard Institute (CLSI) manual (**CLSI, 2017**).

**Comment [U11]:** Which type of antibiotics used for phenotypic antimicrobial susceptibility test? Specifically indicate the type of antibiotic used for the AST?

**Comment [U12]:** Better used the current version of CLSI, either 2022 or 2023

## RESULTS

A total of ~~six (6)~~twelve(6 each) *Salmonella enterica* and 6 *Listeria monocytogenes* of the most resistant isolates were identified molecularly. The Agarose gel electrophoresis of the amplified 16SrRNA gene of bacterial isolates before sequencing showed that Lanes 1 – 12 represent the 16SrRNA gene bands (1500bp) while lane L represents the 100bp molecular ladder (Plate 1). The evolutionary distance between the bacterial isolates from this study and the accession numbers and their closest relatives on the phylogenetic tree is revealed on Figure 1.

The agarose gel electrophoresis image showing the amplified *TEM* gene of the twelve (12) most resistant isolates to antibiotics shows that Lane 2, 3, 4, 6, 9, 11 and 12 showing the *TEM* gene band at 500bp while Lane L represents the 100bp molecular ladder. This shows that seven (7) out of the twelve (12) isolates screened for *TEM* gene had the gene present in their genetic material as shown on Plate 2. The gel electrophoresis image showing the amplified *SHV* gene of the twelve (12) most resistant isolates to antibiotics shows that Lane 1, 2, 3, 4, 5, 6, 7, 9, 10, 11 and 12 showing the *SHV* gene band at 928bp while Lane L represents the 100bp molecular ladder. This indicates that eleven (11) out of the twelve (12) isolates screened for *SHV* gene had the gene present in their genome as shown on Plate 3.

The agarose gel electrophoresis visualizing the presence of the DNA fragments of the twelve (12) resistance bacterial isolates showing that all the isolates with plasmid gene before curing as shown below as shown in Plate 4. Agarose gel electrophoresis revealing the presence of the DNA fragments of the twelve (12) resistance bacterial isolates showed that all the isolates did not carry plasmid gene after curing with acridine orange as shown below as shown in Plate 5.

**Comment [U13]:** You didn't do quantitative PCR you have done conventional PCR, thus, you should avoid statements indicating degree of resistance like more resistance.

**Comment [U14]:** In your gel image the last band described is 1000 bp but here you state you were used 100 bp molecular ladder its totally wrong please revise it again

**Comment [U15]:** Instead of saying plate it is good to say Figure

**Comment [U16]:** It should better to put it as a figure caption instead of your main result description

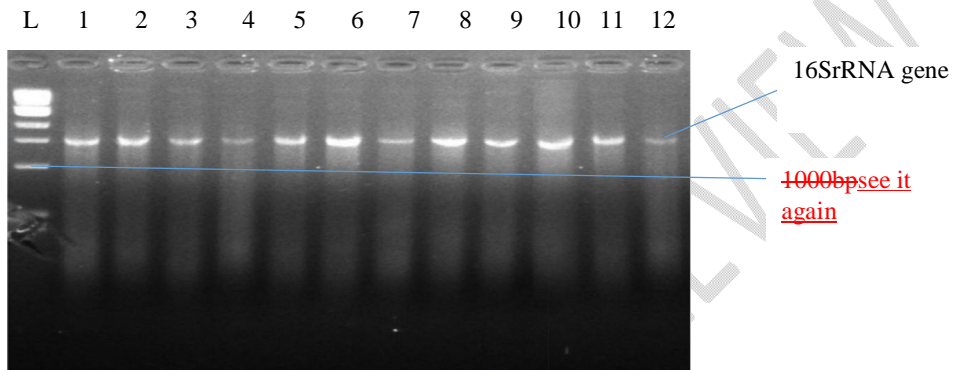
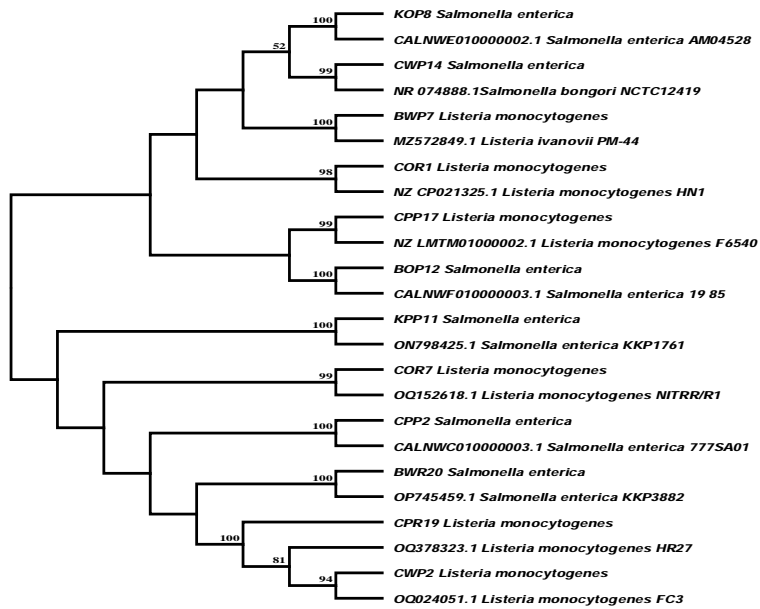
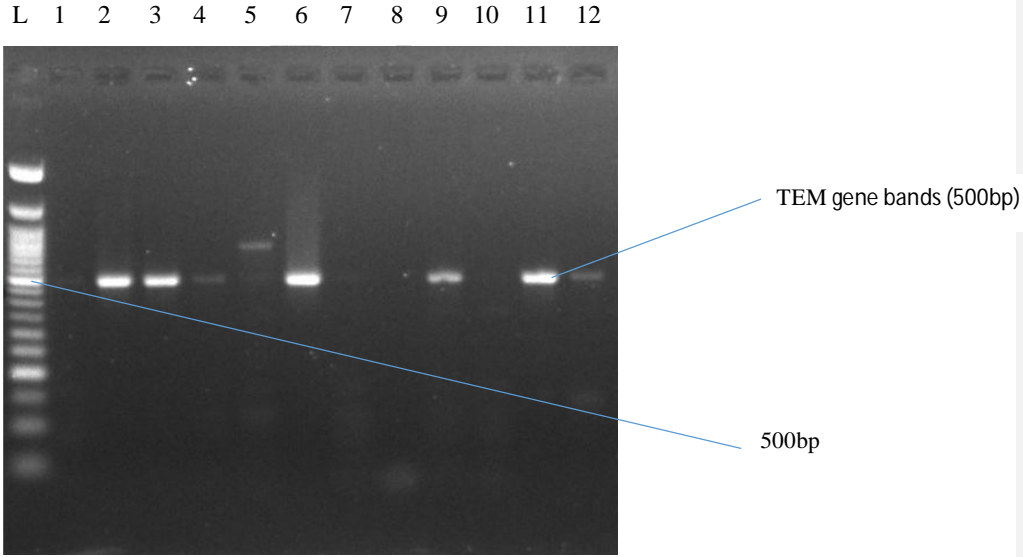


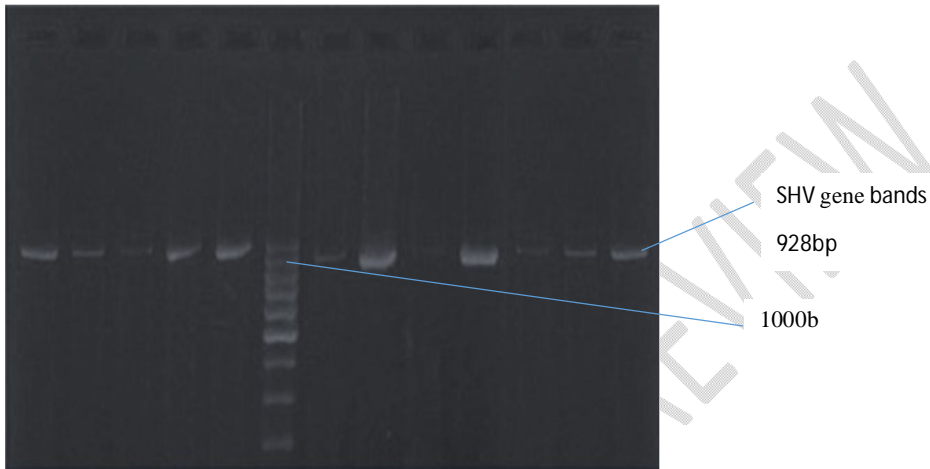
Plate 1: Amplified 16S rRNA Gene of the bacteria Isolates at 1500bp



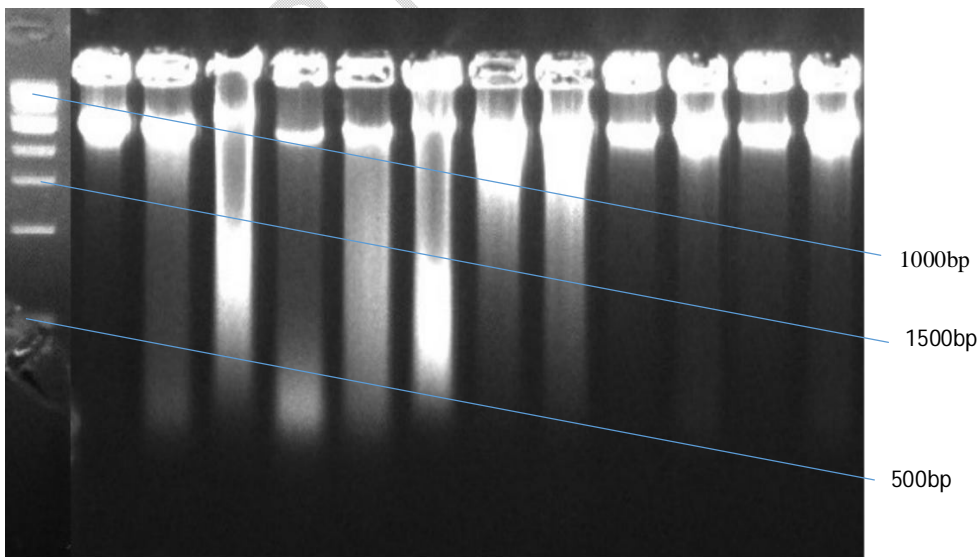
**Figure 1: Phylogenetic Tree showing evolutionary distance between bacterial Isolates**



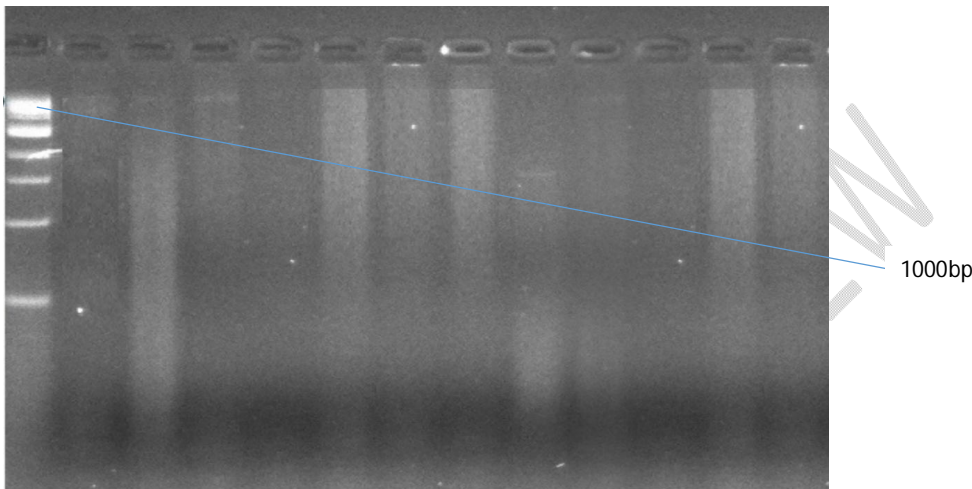
**Plate 2: Agarose Gel Electrophoresis of the Amplified *TEM* Gene Bands of the Bacterial isolates at 500bp with a 50bp molecular ladder**



**Plate 3: Agarose Gel Electrophoresis of the Amplified *SHV* Gene Bands of the bacterial isolates at 928bp with Lane L representing a 100bp molecular ladder**



**Plate 4: Plasmid DNA of the Bacterial Isolates before curing**



**Plate 5: Cured Plasmid DNA of the Bacterial Isolates**

**Table 1: Percentage Resistant Patterns of Test Isolates before and after Plasmid Curing with Curing Agents (Acridine Orange)**

S/N	Isolate code	NCBI BLAST/Strain	Resistance n(%)	Curing with AO (Susceptibility) N(%)
1	KOP8	<i>Salmonella enterica</i> AM04528	– 12(100)	12(100)
2	CWP14	<i>Salmonella bongori</i> -NCTC12419	12(100)	12(100)
3	BWP7	<i>Listeria ivanovii</i> -PM-44	6(75)	8(100)
4	COR1	<i>Listeria monocytogenes</i> -HN1	7(87.5)	8(100)
5	CPP17	<i>Listeria monocytogenes</i> F6540	– 6(75)	8(100)
6	BOP12	<i>Salmonella enterica</i> -19_85	12(100)	12(100)
7	KPP11	<i>Salmonella enterica</i> -KKP1761	12(100)	12(100)
8	COR7	<i>Listeria monocytogenes</i> NITRR/R1	– 5(62.5)	8(100)
9	CPP2	<i>Salmonella enterica</i> –777SA01	12(100)	12(100)
10	BWR20	<i>Salmonella enterica</i> –KKP3882	12(100)	12(100)
11	CPR19	<i>Listeria monocytogenes</i> –HR27	7(87.5)	8(100)
12	CWP2	<i>Listeria monocytogenes</i> –FC3	5(62.5)	8(100)

n=Number of Antibiotic they are resistant to; N=number of antibiotics Susceptible to; AO-

## DISCUSSION

The extract from the obtained 16S rRNA sequence of the isolates produced during the Basic Local Alignment Search Tool (BLASTN) in the National Centre for Biotechnology Information (NCBI) database were highly similar to the sequence from the NCBI non-redundant nucleotide (nr/nt) data base and the 16S rRNA classification of the isolates KOP8, CW14, COR7, BWP7, COR1, CPP17, BOP12, KPP11, CPP2, BWR20, CPR19 and CWP2 which identified bacterial isolates as *Salmonella enterica*-AM04528, *Salmonella bongori*-NCTC12419, *Listeria ivanovii*-PM-44, *Listeria monocytogenes*-HN1, *Listeria monocytogenes*-F6540, *Salmonella enterica*-19\_85, *Salmonella enterica*-KKP1761, *Listeria monocytogenes*-NITRR/R1, *Salmonella enterica*-777SA01, *Salmonella enterica*-KKP3882, *Listeria monocytogenes*-HR27, *Listeria monocytogenes*-FC3 with accession numbers CALNWE010000002.1, NR\_074888.1, MZ572849.1, NZ\_CP021325.1, NZ\_LMTM01000002.1, CALNWF010000003.1, ON798425.1, OQ152618.1, CALNWC010000003.1, OP745459.1, OQ378323.1 and OQ024051.1 and relatedness of 100, 99, 100, 98, 99, 100, 100, 99, 100, 100, 81, 84(%). The phylogenetic trees showing the evolutionary distance or relationship tree of the twelve (12) bacterial isolates as inferred from their nucleotide sequences using the Neighbour-Joining method.

The twelve (12) bacterial isolates of *Salmonella* and *Listeria* were screened for the presence of resistance genes which includes bla<sub>TEM</sub> and bla<sub>SHV</sub> during the amplification of the rDNA of the isolates. The bla<sub>TEM</sub> genes were present in *Salmonella bongori*-NCTC12419, *Salmonella enterica*-19\_85, *Salmonella enterica*-KKP1761, *Salmonella enterica*-KKP3882, *Listeria monocytogenes*-F6540, *Listeria monocytogenes*-HR27, *Listeria monocytogenes*-FC3 genome while *Salmonella enterica*-AM04528, *Salmonella bongori*-NCTC12419, *Salmonella enterica*-19\_85, *Salmonella enterica*-KKP1761, *Salmonella enterica*-777SA01, *Salmonella enterica*-KKP3882, *Listeria ivanovii*-PM-44, *Listeria monocytogenes*-F6540, *Listeria monocytogenes*-NITRR/R1, *Listeria monocytogenes*-HR27 and *Listeria monocytogenes*-FC3 possess the bla<sub>SHV</sub> gene in their genomes.

**Comment [U17]:** Your discussion needs revision. you have to discuss your main finding and provide logical induction about the possible discrepancy from other scholars finding

**Comment [U18]:** Listing your isolate here is senseless. Your focus is not the whole *Listeria* and *Salmonella* species you have to focus on your study objective

The bla<sub>TEM</sub> and bla<sub>SHV</sub> are resistance gene for beta lactam drugs such as Penicillins, Monobactams, Cephalosporins and Carbapenems used for the treatment of Gram positive and Gram-negative bacterial infection. These antibiotics contain a nucleus of 6-aminopenicillanic acid, ~~animo~~penicillanic acid (lactam plus thiazolidine) ring and other ringside chains giving them their unique nature. This extended spectrum beta Lactamase gene (bla<sub>TEM</sub> and bla<sub>SHV</sub>) has been widely known to be the cause of resistance of the bacterial isolates to first and second generation cephalosporin and penicillin antibiotics used in this study and the excessive production of can increase the ability of isolates to resist these antibiotics completely (Park *et al.*, 2013). The bla<sub>TEM</sub> and bla<sub>SHV</sub> genes codes for the production of bla<sub>TEM</sub> and bla<sub>SHV</sub> beta-lactamase enzyme which destroy or inactivate the beta-lactam ring of antibiotics thereby inhibiting the activity of the antibiotics especially in Gram-negative bacteria (Ford *et al.*, 2015).

Comment [U19]: Better bring it to the introduction

However, bacterial resistance to beta-lactams drugs is also expressed through the production of beta-lactamases as discussed earlier but could also be mediated by the decreased penetration to the target site. The resistance to beta-lactam antibiotics observed in this study could be attributed to the continuous usage and exposure of these antibiotics to the bacterial isolates (Sauvage *et al.*, 2008; Barika *et al.*, 2021). Parvathi *et al.* (2004) made an observation from their research that the increasing use of antibiotics without prescription in developing countries especially Nigeria where there are no regulatory policies to effectively prohibit this action, has rendered the commonly used antibiotics completely ineffective in the treatment of infections. Acridine orange (An intercalating agent) have considerable potentials for treating plasmid-mediated antibiotic resistance in bacteria. The significant multidrug resistance index recorded against all the isolates used in the study, highlighted the terrible future awaiting the antibiotic era, unless some scientific approaches are put in place to curtail such public health hazard. However, the plasmid curing assay employed in this study may be one of such scientific approaches that may help to reduce the spread of antibiotic resistance in bacteria. This is because after the curing, the multidrug resistance index was completely corrected and drastically reduced in the studied isolates. This is in agreement with the previous findings on impact of plasmid curing on multi-drug resistant *E. coli* (Oriomah and Akpe, 2019; Zaman *et al.*, 2010), *Pseudomonas aeruginosa* (Elias *et al.*, 2013), *Vibrio* and

Comment [U20]: You were not shown multidrug resistance profile of your isolate in the result section. Why you describe here?

Comment [U21]: Please read more about multidrug resistance it is better written as drug-resistance

*Salmonella* species (Zhang, *et al.*, 2012). The role of the curing on reverting the antibiotic multidrug resistance depends on whether the resistance is acquired or induced (Duedu *et al.*, 2017), The complete elimination of resistance against antibiotics used in this study by curing, suggests that the resistance is acquired, confirming further that the efficacy of antibiotics administered by injection is easily conserved (Guillermo *et al.*, 2012).

## CONCLUSION AND RECOMMENDATIONS

This study has demonstrated the presence of resistant genes (Bla<sub>TEM</sub> and Bla<sub>SHV</sub>) and plasmid curing potential of Acridine orange as a remedy to antibiotic resistance in *Salmonella enterica* and *Listeria monocytogenes*. These finding emphasize the need for continued surveillance and proper management of seafood to prevent spread of these pathogens and potential outbreak of foodborne illnesses.

## REFERENCES

- Bell, J. M., Paton, J. C. and Turnidge, J. (1998). Emergence of Vancomycin Resistant *Enterococci* in Australia: Phenotypic and Genotypic Characteristics of Isolates. *Journal of Advances in Biology*, 1(1), 23-44.
- Barika, P.N. Sampson, T., N.P. Akani and L.P. Peekate (2021). Molecular Characterization and Detection of Antibiotic Resistant Genes in *Escherichia coli* isolated from *Senilia senilis*(Cockle) in Rivers State, Nigeria. *Nigerian Journal of Microbiology*, 35(2), 5876-5886
- Cheesbrough, M. (2005) *District Laboratory Practice in Tropical Countries*. 2nd ed, University press, University of Cambridge, Edinburgh, Cambridge, United Kingdom, 38(39), 194 – 201.
- Jukes, T. H. and Cantor, C. R. (1969). *Evolution of protein molecules*. In Munro HN, editor, *Mammalian Protein Metabolism*, Academic Press, New York, 21-132.
- Olsen, N. D. and Morrow J. B. (2012). DNA extract characterization process for microbial detection methods development and validation. *BMC Research Notes*, 5, 668.
- Saitou, N. and Nei, M. (1987). The neighbor-joining method: A new method for reconstructing phylogenetic trees. *Molecular Biology and Evolution*, 4, 406-425.
- Srinivasan, R., Karaoz, U., Volegova, M., MacKichan, J., Kato-Maeda, M., Miller, S., Nadarajan, L., Brodie, E. L. and Lynch, S. V. (2015). Use of 16S rRNA Gene for

Identification of a Broad Range of Clinically Relevant Bacterial Pathogens. *Plos One*, 10 (2), 1 – 22.

Carattoli, A. (2013). Plasmid and the spread of resistance. *International Journal of Medical Microbiology*, (303), 298-304.

Burrssow, H. H., Canchaya, C. and Herdt, W. (2004). Phages and Evolution of the Bacteria Pathogen: from genomics rearrangement to Lysogenic conversion. *Journal of Microbiology and Molecular Biology Revision*, 68, 560-602.

Clinical and Laboratory Standard Institute (2017). *Performance Standards for Antimicrobial Susceptibility Testing, Twenty-first Informational Supplement*. CLSI document M100-S21 (ISBN1-56238-742-1) Clinical and Laboratory Standards Institute, 940 West Valley Road, Suite 1400, Wayne, Pennsylvania 19087 USA. 30(1), 68-70.

Daneman, N., Sarwar, S., Fowler, R. A. and Cuthbertson, B. H. (2013). Effects of selective decontamination on antimicrobial resistance in intensive care units. *Lancet Infectious Disease*, 13, 328-341.

Duedu, K. O., Offei, G., Codjoe, F. S. and Donkor, E. S. (2017). Multidrug Resistant Enteric Bacterial Pathogens in a Psychiatric Hospital in Ghana: Implications for Control of Nosocomial Infections. *International Journal of Microbiology*, 17, 1-6.

Elias, H. M., Qader, M. K. and Saleh, W. M. (2013). Determination of Plasmid DNA Role in Multidrug Resistant *Pseudomonas aeruginosa* Clinical Isolates. *International Journal of Microbiology and Immunology*, 1, 80-86.

Espejo, R. T., García, K. and Plaza, N. (2017), Infectious Diseases Society of America clinical practice guidelines for the diagnosis and management of infectious diarrhea. *Frontiers Microbiology*, 8, 13-27.

Ford, L., Haywood, P., Kirk, M. D., Lancsar, E., Williamson, D. A. and Glass, K. (2015). Cost of *Salmonella* Infections in Australia, 2015. *Journal of Food Protection*, 82, 1607–1614.

Guillermo, V. S., Ronald, N. M. and Jose, M. B. (2012). In vitro antimicrobial resistance of urinary *Escherichia coli* isolates among U.S. outpatients from 2000-2010. *Antimicrobial Agents and Chemotherapy*, 56(4), 2181-2183.

Letchumanan, V., Chan, K. and Lee, L. (2015). An insight of Traditional Plasmid curing in *Vibrio* species. *Frontiers in Microbiology*, 6, 1-17.

Olukoya, D. K. and Oni, O. (1990). Plasmid Profile Analysis and Antimicrobial Susceptibility Patterns of *Shigella* isolates from Nigeria. *Epidemiology and Infection*, 105, 59-64.

Park, S., Navratil, S., Gregory, A., Bauer, A.; Srinath, I., Jun, M.; Szonyi, B., Nightingale, K.; Anciso, J. and Ivanek, R. (2013). Generic *Escherichia coli* contamination of spinach at the preharvest stage: Effects of farm management and environmental factors. *Applied and Environmental Microbiology*, 79, 4347–4358.

Parvathi, A., Kumar, H. S., Karunasagar, I. and Karunasagar, I. (2004), Foodborne Pathogens and Antibiotic Resistance. *Application of Environmental Microbiology*, 70, 6909-6913.

Saitou, N. and Nei, M. (1987). The neighbor-joining method: A new method for reconstructing phylogenetic trees. *Molecular Biology and Evolution*, 4, 406-425.

Sauvage, E., Kerff, F., Terrak, M., Ayala, J. A. and Charlier, P. (2008). The penicillin-binding proteins: structure and role in peptidoglycan biosynthesis. *Journal of Federation of European Microbiological Societies Microbiology Reviews*, 3 (2), 234-258.

Trindade, P. A., McCulloch, J. A., Oliveira, G. A. and Mamizuka, E. M. (2003). Molecular techniques for MRSA typing: current issues and perspectives. *Brazil Journal of Infectious Disease*, 7, 32–43.

Vengadesh, L., Kok-Gan, C., and Learn-Han, L. (2015). An insight of traditional plasmid curing in *Vibriospp*. *Frontiers in Microbiology*, 6, 73-85.

Zaman, M. A., Pasha, M. H. and Akhter, M. Z. (2010). Plasmid curing of *Escherichia coli* cells with ethidium bromide, sodium dodecyl sulfate and acridine orange. *Bangladesh Journal of Microbiology*, 27(1), 28-31.

Zhang, R., Pan, L. and Zhao, Z. (2012). High Incidence of plasmid in marine *Vibrio* species isolated from Mai po Nature Reserve of Hong Kong. *Ecotoxicology*, 21 (6), 1661-1668.

Zhang, Y. Y. (2019). Prevalence, Genotypic Characteristics and Antibiotic Resistance of *Listeria monocytogenes* from Retail Foods in Bulk in Zhejiang Province, China. *Frontiers Microbiology*, 10, 1710-1732.

UNDER PEER REVIEW