

# Relationship Between Above-Ground Biomass and different Vegetation Indices of Tea Plantation of Alipurduar District, West Bengal, India

---

## ABSTRACT

This study investigates the relationship between above-ground biomass (AGB) and various vegetation indices in the tea plantations of Alipurduar District, West Bengal, India. The research was conducted in three major tea estates: Kumargram, Sankos and Newlands, using stratified random sampling across 36 plots. Field measurements of trees, shrubs, and herbs were taken, and AGB was estimated using allometric equations. Sentinel-2 satellite data was utilized to derive vegetation indices such as NDVI, GNDVI, SAVI, MSAVI, EVI-1, EVI-2, NDVIRE, RDVI, DVI, OSAVI, and ARVI. The study found significant variation in AGB, ranging from 31.40 Mg ha<sup>-1</sup> to 68.84 Mg ha<sup>-1</sup>, with an average of 47.22 Mg ha<sup>-1</sup>. Strong positive correlations were observed between AGB and indices like GNDVI ( $r=0.96$ ) and EVI-2 ( $r=0.96$ ), indicating their effectiveness in biomass prediction. The integration of remote sensing technologies enhances the scalability and precision of biomass estimation, providing valuable insights into the carbon storage potential and ecological health of tea plantations. These findings have implications for sustainable management and climate change mitigation in agroforestry systems.

*Keywords: Above-ground Biomass, Sentinel-2, Vegetation indices, Tea garden.*

## 1. INTRODUCTION

Tea, scientifically known as *Camellia sinensis* (L.) O. Kuntze, is a perennial evergreen plant typically cultivated in shrub form to encourage the growth of young shoots. It ranks among the most widely consumed beverages worldwide, with a particularly strong presence in Asia, Africa, and the Near East [11]. The increasing demand for tea makes it a vital part of the global beverage market, though its cultivation is confined to areas with specific climates and soil conditions. Tea is a significant source of national pride for India, contributing substantially to the country's foreign exchange earnings and Gross National Product (GNP). India is a global leader in tea production, consumption, and export, accounting for 25% of the world's total production. The primary tea-producing regions in India include Assam, West Bengal, Himachal Pradesh, Kerala, Karnataka, and Tamil Nadu. These plantations cover more than 5,640 km<sup>2</sup> square kilometres of agricultural land and produce over 1.209 Tg of tea annually [28,19]. Tea plantations are a significant component of the agricultural landscape in many parts of the world, particularly in regions like the

Alipurduar District in West Bengal, India [13]. The region is home to several notable tea estates, such as the Aryaman Tea Estate and the Kumargram and Sankos Tea Estates. The tea industry not only contributes substantially to the local economy but also plays a crucial role in the socio-cultural fabric of the region. The management and sustainability of these plantations are of paramount importance, necessitating accurate and efficient methods for monitoring various agronomic parameters, including Above-Ground Biomass (AGB) [1]. The sustainability and management of these tea plantations are crucial, especially in terms of monitoring agronomic parameters like Above-Ground Biomass (AGB) [14]. Accurate estimation of AGB is essential for assessing the health and productivity of the plantations, which in turn impacts the overall sustainability of the tea industry [3].

Estimating above-ground biomass (AGB) is essential to the long-term sustainability of tea plantation management. It offers insightful information about the productivity, health, and capacity of tea plants to sequester carbon [24]. Conventional techniques, such as destructive sampling, are labour and time-intensive, making them unsuitable for large-scale applications. As a result, there is increased interest in non-destructive techniques, especially those that make use of allometric equations. Tree Diameter at Breast Height (DBH), height, and wood density are easily observable factors that can be used to estimate AGB using allometric equations [25]. These equations can be used over wide areas without the requirement for destructive sampling because they are derived from statistical correlations acquired from field data [26]. The efficiency and precision of AGB estimation are improved when allometric equations are used in conjunction with remote sensing technology, such as satellite images. Allometric models paired with spatially extended data from remote sensing can yield detailed maps of biomass [27]. This strategy is especially helpful for tea plantations, since traditional approaches are difficult due to the consistent planting patterns and deep canopy. Plantation managers may more effectively monitor the growth dynamics and production potential of tea plants by employing non-destructive approaches. This allows for timely interventions and improved resource management. Furthermore, by measuring the amount of carbon stored in tea plantations, precise AGB estimation supports efforts to mitigate climate change and account for carbon emissions [16].

The evaluation of above-ground biomass (AGB) in tea plantations necessitates the application of vegetation indices (VIs), which offer detailed insights into plant health, productivity, and biomass accumulation [17]. The Normalized Difference Vegetation Index (NDVI) is favoured for its ease of use and reliability in measuring green biomass through the differential reflectance of red and near-infrared light. The Enhanced Vegetation Index (EVI) is particularly beneficial for dense tea plantations as it minimizes atmospheric effects and enhances sensitivity in areas with high biomass [5]. Meanwhile, the Optimized Soil Adjusted Vegetation Index (OSAVI) increases accuracy in areas with varying soil conditions by compensating for soil brightness. Moreover, the Green Normalized Difference Vegetation Index (GNDVI) is attuned to chlorophyll levels, simplifying the monitoring of health and yield in tea plantations. Indices derived from satellite imagery enable precise Above-Ground Biomass (AGB) estimation, leading to better resource management, timely interventions, and carbon sequestration efforts, all contributing to climate change mitigation. By incorporating these Vegetation Indices (VIs) with remote sensing data, plantation managers can promote sustainable practices, monitor growth patterns, and optimize resource allocation in tea plantations [20]. Vegetation indices (VIs) are employed to mitigate variations in spectral reflectance measurements that arise from factors such as soil background, sun-view angles, and atmospheric conditions when assessing biophysical properties. Numerous studies have demonstrated a significantly positive relationship between biomass and vegetation indices [13,30,10]. This study aims to investigate the relationship between biomass and vegetation indices (VIs) in the tea plantations of Alipurduar District, a crucial part of West Bengal's tea industry. Given the region's sensitivity to climate change and

human activities, the study seeks to identify the VIs or band ratios that best correlate with biomass.

## 2. MATERIAL AND METHODS

### 2.1 Study area

This study focuses on the tea-growing areas of the Alipurduar District (Fig. 1), which lies between latitudes  $26^{\circ}40'20.10''$  N and  $26^{\circ}38'42.95''$  N, and longitudes  $89^{\circ}47'28.23''$  E and  $89^{\circ}52'06.82''$  E. We conducted our research in three major tea estates: Kumargram, Sankos, and Newlands. These estates are in the Kumargram Community Development Block of Alipurduar District, West Bengal. Kumargram is situated in the eastern part of the district and is part of the Sub-Himalayan range. The northern fringe of the Doars Region is ideal for tea cultivation due to its favorable climate and topography, providing large-scale employment opportunities [18]. The region experiences three primary seasons: summer, monsoon, and post-monsoon (winter). Generally, temperatures range from a maximum of  $33^{\circ}\text{C}$  to a minimum of  $10^{\circ}\text{C}$ . The majority of the annual rainfall, averaging around 3411 mm, occurs between May and September [13]. The Sanaka River runs along the eastern boundary of Kumargram. The area is bordered by the Chukha District in Bhutan to the north, the Gossaigaon Revenue Circle in Kokrajhar District (Assam) to the east, the Tufanganj II CD Block in Cooch Behar District to the south, and the Alipurduar II and Kalchini CD Blocks to the west.

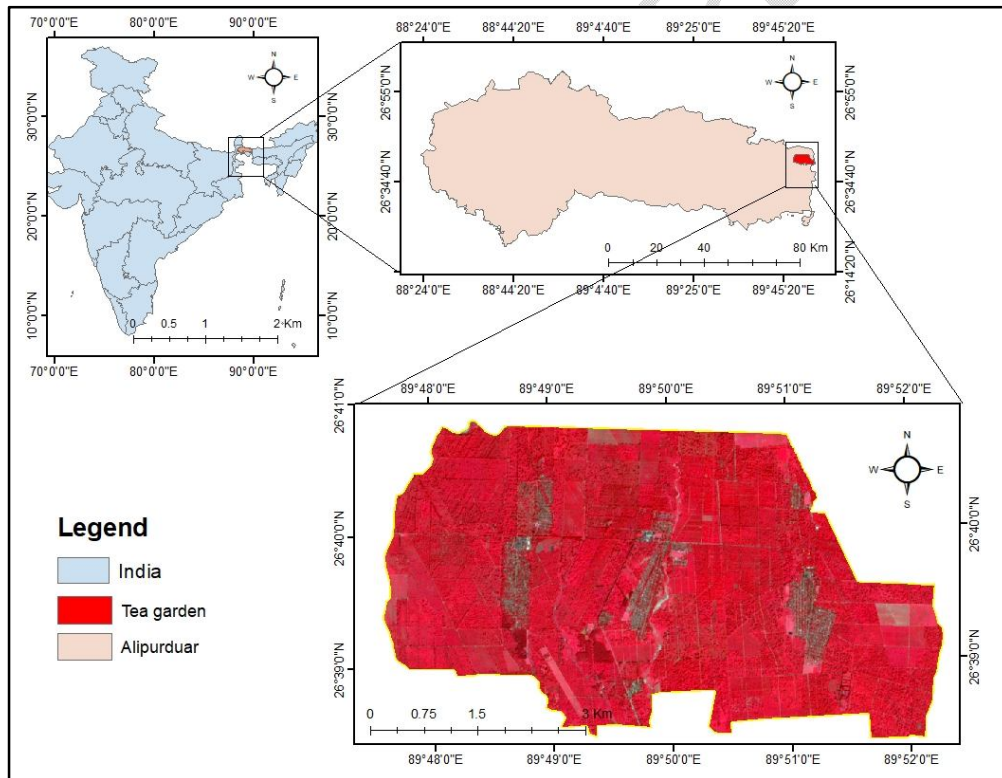


Fig.1. Geographical Map of the study area in West Bengal, India

### 2.2 Field assessment of above-ground biomass

In the present study, stratified random sampling was used for biomass estimation, with 36 plots laid out in different homogeneous strata based on the accessibility of the locations.

Trees, shrubs, and herbs were sampled using a stratified random nested method. The main quadrat was 20 m x 20 m, with two 5 m x 5 m quadrats marked at diagonal corners for shrubs. For herbs, five 1 m x 1 m plots were marked at all corners and one at the center of the main quadrat. The stem diameter at DBH of all the trees in the quadrat will be measured separately. For shade trees in the tea gardens, a logarithmic equation by Brown *et al.* (1997) was adopted [2].

$$Y = 21.297 - 6.953D + 0.740D^2$$

where Y is the Above-Ground Biomass (AGB) of the tree and D is the diameter of the tree at breast height. The coefficient of determination ( $R^2$ ) value for the original equations is 0.87. The AGB of tea will be estimated using the allometric equation suggested by Kalita *et al.* (2016).

$$Y = aX^b$$

where Y is the biomass component kg per stem, X represents stem diameter (cm) at 5 cm height and a and b stand for coefficient and the allometric constant respectively. For AGB, the values of a and b will be 0.047 and 1.878 respectively [12].

The study utilized Sentinel-2 Level 2A satellite data from November 2023. Since the data was atmospherically corrected surface reflectance, no pre-processing was necessary. The Land Use Land Cover (LULC) map was created using the maximum likelihood classifier in ArcGIS software (version 10.8.1) [21]. A point shapefile of the sampling sites was generated and overlaid on the corrected image to verify the alignment of plot positions with the ground.

### 2.3 Vegetation Indices

In the estimation of above-ground biomass (AGB) in tea gardens, various vegetation indices offer unique advantages and insights, making them essential tools for accurate assessment. These indices, derived from Sentinel-2 Level 2A satellite data, provide critical insights into vegetation health and biomass estimation. The indices used include NDVI, GNDVI, SAVI, MSAVI, EVI-1, EVI-2, NDVI<sub>RE</sub>, RDVI, DVI, OSAVI, and ARVI (Table 1). Each index has its unique history and significance, contributing to a comprehensive understanding of vegetation dynamics.

The Normalized Difference Vegetation Index (NDVI), a widely used index, measures the difference between near-infrared and red light, providing a basic yet effective measure of plant health [23]. Green Normalized Difference Vegetation Index (GNDVI), a variation using green light, is particularly useful for detecting chlorophyll content and assessing plant vigour [7]. Soil-Adjusted Vegetation Index (SAVI) and its improved version, Modified SAVI (MSAVI), minimize soil brightness effects, making them ideal for areas with sparse vegetation [9]. Enhanced Vegetation Index (EVI-1) and its simplified counterpart, EVI-2, optimize vegetation signals with improved sensitivity in high biomass regions and better atmospheric correction, enhancing canopy structural analysis [8,29]. The Red-Edge NDVI (NDVI<sub>RE</sub>), utilizing the red-edge band, is sensitive to chlorophyll changes and plant stress, crucial for early stress detection. The renormalized Difference Vegetation Index (RDVI) combines NDVI's simplicity with the sensitivity of the Ratio Vegetation Index (RVI), enhancing vegetation signals for biomass estimation. Difference Vegetation Index (DVI) and RVI provide straightforward measures of vegetation health and density, respectively. Optimized SAVI (OSAVI) offers better performance in moderate vegetation cover areas by reducing soil noise. Lastly, the Atmospherically Resistant Vegetation Index (ARVI), with its blue band correction, ensures

Vegetation indices	Definition
NDVI (Normalized Difference Vegetation Index)	$\frac{(Band8 - Band4)}{(Band8 + Band4)}$
SAVI (Soil Adjusted Vegetation Index)	$\frac{(Band8 - Band4)}{(Band8 + Band4 + 0.5)} \times 1.5$
MSAVI (Modified Soil Adjusted Vegetation Index)	$2Band8 + \frac{1 - \sqrt{(2Band8 + 1)^2 - 8(Band8 - Band4)}}{2}$
NDVI <sub>RE</sub> (Normalized Difference Vegetation Index with bands 4)	$\frac{(Band5 - Band4)}{(Band5 + Band4)}$

reliability under varying atmospheric conditions [15,6,22]. Each index contributes uniquely to the comprehensive estimation of AGB, with their combined use providing a robust methodology for monitoring and assessing biomass in tea gardens.

**Table1. List of Vegetation indices derived from Sentinel-2 imagery**

and 5)	
GNDVI (Green normalized difference vegetation index)	$\frac{(Band7 - Band3)}{(Band7 + Band3)}$
EVI-1 (Enhanced Vegetation Index 1)	$2.5 \times \frac{(Band8 - Band4)}{(Band8 + 6 \times Band4 - 7.5 \times Band2 + 1)}$
EVI-2 (Enhanced Vegetation Index 2)	$2.5 \times \frac{(Band8 - Band4)}{(Band8 + 2.4 \times Band4 + 1)}$
OSAVI (Optimized Soil Adjusted Vegetation Index)	$\frac{(Band8 - Band4)}{(Band8 + Band4 + 0.16)}$
ARVI (Atmospherically Resistant Vegetation Index)	$\frac{(Band8 - (Band4 - \times (Band4 - Band2)))}{(Band8 + (Band4 - \times (Band4 - Band2)))}$
DVI (Difference Vegetation Index)	$Band8 - Band4$
RDVI (Renormalized Difference Vegetation Index)	$\frac{(Band8 - Band4)}{\sqrt{Band8 + Band4}}$

### 3. RESULTS AND DISCUSSION

#### 3.1 Estimation of Above ground-biomass

The assessment of above-ground biomass was meticulously carried out using field inventory data, leveraging allometric equations tailored for different plant types. Specifically, the equations developed by Brown *et al.* (1997) were utilized for shade trees, while those by Kalita *et al.* (2016) were applied to tea bushes. In each of the individual field plots, detailed measurements were taken for tea bushes of *Camellia sinensis* and various parameters of shade trees, including tree heights and diameter at breast height (DBH). There is a rich diversity of shade tree species within the plots, including *Albizia lebbeck*, *Acacia auriculiformis*, *Albizia chinensis*, *Albizia odoratissima*, *Dalbergia sissoo*, *Erythrina indica*, *Albizia procera*, and *Neolamarckia cadamba*. These species contribute significantly to the overall biomass and ecological balance of the area [4].

Statistic	AGB	NDVI	GNDVI	SAVI	MSAVI	EVI-1	EVI-2	NDVI <sub>RE</sub>	RDVI	DVI	OSAVI	ARVI
Mean	47.22	0.69	0.66	0.44	0.40	0.46	0.45	0.27	0.45	0.28	0.68	0.76
Std	10.68	0.04	0.05	0.06	0.07	0.03	0.04	0.06	0.05	0.05	0.07	0.07
Min	31.40	0.61	0.56	0.33	0.25	0.40	0.37	0.15	0.36	0.20	0.46	0.59
First quartile	41.37	0.67	0.64	0.38	0.32	0.43	0.42	0.23	0.43	0.25	0.65	0.72

<b>Median</b>	50.57	0.70	0.67	0.44	0.40	0.46	0.45	0.27	0.46	0.30	0.69	0.78
<b>Third Quartile</b>	56.57	0.74	0.69	0.50	0.45	0.49	0.47	0.33	0.51	0.32	0.72	0.83
<b>Max</b>	68.84	0.79	0.76	0.57	0.49	0.63	0.57	0.37	0.55	0.38	0.76	0.86

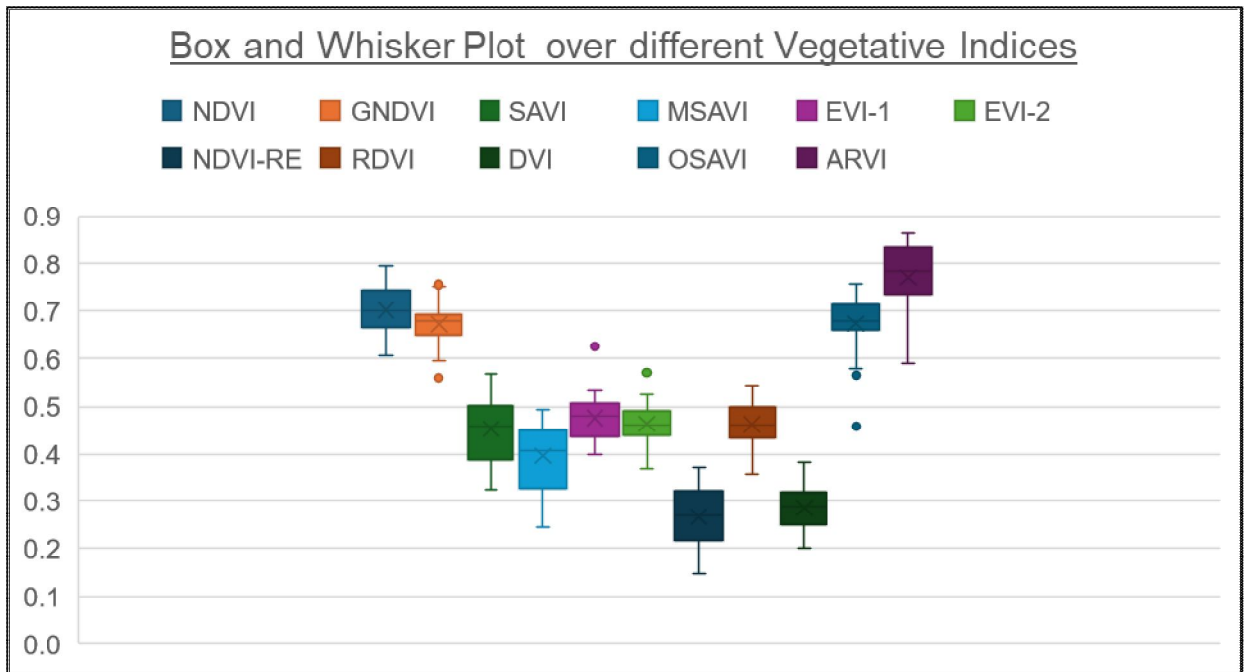
From the field measurements conducted across 36 sampling points, the estimated above-ground biomass varied significantly, ranging from 31.40 Mg ha<sup>-1</sup> to 68.84 Mg ha<sup>-1</sup>. This variation reflects the heterogeneity in tree density and species composition across different plots. On average, the Above-Ground Biomass (AGB) was calculated to be approximately 47.22 Mg ha<sup>-1</sup> (Table. 2), providing a valuable benchmark for understanding the carbon storage potential and ecological health of the region.

**Table2. Descriptive statistics of observed Above-ground biomass and derived Vegetation indices**

### 3.2 Comparative correlation analysis between above-ground biomass and vegetation indices

The table2 provides a comprehensive summary of descriptive statistics for Above-Ground Biomass (AGB) and various vegetation indices such as NDVI, GNDVI, SAVI, MSAVI, EVI-1, EVI-2, NDVI<sub>RE</sub>, RDVI, DVI, OSAVI, and ARVI. The mean values indicate the average levels of these indices, with ARVI having the highest mean (0.76) and NDVI-RE the lowest (0.27). The standard deviation values show the variability in the data, with ARVI again showing the highest variability (0.073) and EVI-1 the lowest (0.034). The range of values, from minimum to maximum, highlights the spread of data, with AGB ranging from 31.40 to 68.84 Mg ha<sup>-1</sup>. Quartile values provide insights into the distribution, with the first quartile, median, and third quartile values showing the central tendency and spread of the data. This statistical summary is crucial for understanding the variability and distribution of biomass and vegetation indices in the study area.

The box plot analysis reveals several key insights into the vegetation indices (Fig.2). NDVI and GNDVI exhibit a tight range with medians around 0.65, indicating consistent vegetation productivity, though outliers suggest some variability. SAVI and MSAVI show greater spread, particularly MSAVI, hinting at diverse vegetation types or growth stages. EVI-1 and EVI-2 display similar trends in vegetation density, with outliers marking regions of varying vigour. NDVI<sub>RE</sub>'s wider distribution captures subtle canopy differences, possibly due to species or health variations. RDVI's outliers point to areas of extreme vegetation density, while DVI's balanced distribution highlights variability. OSAVI's broad spectrum reflects its sensitivity to vegetation cover variations.



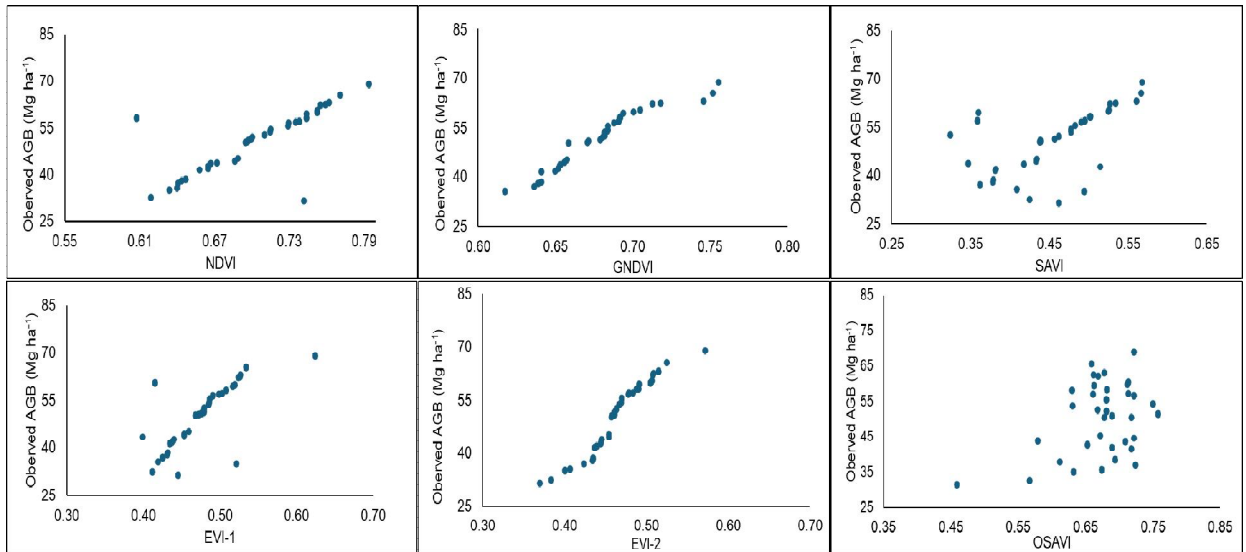
**Fig.2. Box and Whisker plot over different Vegetation Indices**

The correlation matrix in Table 3 and Fig.3. reveals significant relationships between Above Ground Biomass (AGB) and various vegetation indices. AGB shows a very strong positive correlation with GNDVI (0.96) and EVI-2 (0.96), indicating these indices are highly effective in predicting biomass. NDVI (0.78) and EVI-1 (0.76) also exhibit strong positive correlations with AGB, suggesting their relevance in biomass estimation. SAVI (0.58) and OSAVI (0.40) have moderate correlations, reflecting some predictive capability but are less robust than GNDVI or EVI-2. Conversely, indices like NDVI<sub>RE</sub> (0.06), RDVI (0.27), DVI (0.03), and ARVI (0.02) show weak correlations, indicating limited utility in estimating AGB. These insights are crucial for selecting appropriate indices for accurate biomass estimation in tea plantations.

**Table3. Correlation between field-measured above-ground biomass and selected vegetation index**

	AGB	NDVI	GNDVI	SAVI	MSAVI	EVI-1	EVI-2	NDVI <sub>RE</sub>	RDVI	DVI	OSAVI	ARVI
AGB	1.00											
NDVI	0.78**	1.00										
GNDVI	0.96**	0.70	1.00									
SAVI	0.58**	0.53	0.53	1.00								
MSAVI	0.33	0.36	0.20	0.34	1.00							
EVI-1	0.76**	0.65	0.69	0.58	0.24	1.00						
EVI-2	0.96**	0.73	0.98	0.56	0.17	0.74	1.00					
NDVI <sub>RE</sub>	0.06	-0.09	0.13	0.06	-0.09	-0.09	0.12	1.00				
RDVI	0.27	-0.01	0.31	0.15	0.09	0.22	0.28	0.33	1.00			
DVI	0.03	-0.19	0.19	0.08	-0.24	-0.12	0.18	0.35	0.00	1.00		
OSAVI	0.40*	0.16	0.49	0.11	-0.26	0.15	0.47	0.18	0.29	0.28	1.00	
ARVI	0.02	-0.02	0.06	-0.14	-0.04	-0.05	-0.02	0.12	-0.17	0.03	0.12	1

\*\* and \* indicate p-value  $\leq 0.01$  and  $\leq 0.05$  respectively



**Fig.3. Scatter Plots showing person correlation co- efficient between AGB and VI's which are significant.**

#### 4. CONCLUSION

The research provides valuable insights into estimating **Above-Ground-Biomass** (AGB) in tea plantations by leveraging allometric equations and correlating field measurements with vegetation indices. The significant variation in AGB, ranging from 31.40  $\text{Mg ha}^{-1}$  to 68.84  $\text{Mg ha}^{-1}$  across different plots, underscores the heterogeneity in species composition and tree density. The strong positive correlations of AGB with GNDVI and EVI-2 suggest these indices are highly effective for biomass prediction in such agroforestry systems. The integration of remote sensing technologies, such as satellite imagery and UAV-based sensors, enhances the scalability and precision of biomass estimation by allowing for continuous monitoring across large areas, reducing the need for labor-intensive field measurements. These technologies also provide a more comprehensive understanding of the spatial and temporal dynamics of vegetation. The findings contribute to understanding the carbon storage potential of tea plantations, with implications for sustainable management and climate change mitigation. Future research could explore integrating additional remote sensing techniques, refining models with larger datasets, and assessing temporal changes in AGB to further enhance biomass estimation accuracy and ecological health monitoring.

## CONSENT (WHERE EVER APPLICABLE)

"All authors declare that 'written informed consent was obtained from the patient (or other approved parties) for publication of this case report and accompanying images'".

## ETHICAL APPROVAL (WHERE EVER APPLICABLE)

"All authors hereby declare that "Principles of laboratory animal care" (NIH publication No. 85-23, revised 1985) were followed, as well as specific national laws where applicable. All experiments have been examined and approved by the appropriate ethics committee."

## REFERENCES

1. Ansari, S., & Sheereen, Z. (2016). Socio-economic condition of tea garden worker in Alipurduar district West Bengal. *International Journal of Research in Social Sciences*, 6(2), [pages?].
2. Brown, S., Schroeder, P., & Birdsey, R. (1997). Above ground biomass distribution of US eastern hardwood forests and the use of large trees as an indicator of forest development. *Forest Ecology and Management*, 96(1-2), 37-47.
3. Chaturvedi, R.K., & Raghubanshi, A.S. (2015). Allometric models for accurate estimation of aboveground biomass of teak in tropical dry forests of India. *Forest Science*, 61(5), 938-949.
4. Chowdhury, A., Sarkar, S., Roy, P., Mondal, S., & Chowdhury, M. (2015). Inventory of shade trees in tea gardens of sub-himalayans region of West Bengal, India. *The International Journal of Science and Technoledge [should this be Technology?]*, 3(12), 164.
5. Dutta, R. (2010). An integrated approach for monitoring tea plantations. *Geospatial world, Geospatial Communication Network*, November. <http://geospatialworld.net/Paper/Application/ArticleView.aspx>.
6. Gitelson, A., & Merzlyak, M.N. (1994). Spectral reflectance changes associated with autumn senescence of *Aesculus hippocastanum* L. and *Acer platanoides* L. leaves. Spectral features and relation to chlorophyll estimation. *Journal of Plant Physiology*, 143(3), 286-292.
7. Gitelson, A.A., Kaufman, Y.J., & Merzlyak, M.N. (1996). Use of a green channel in remote sensing of global vegetation from EOS-MODIS. *Remote Sensing of Environment*, 58(3), 289-298.
8. Huete, A., Didan, K., Miura, T., Rodriguez, E.P., Gao, X., & Ferreira, L.G. (2002). Overview of the radiometric and biophysical performance of the MODIS vegetation indices. *Remote Sensing of Environment*, 83(1-2), 195-213.
9. Huete, A.R. (1988). A soil-adjusted vegetation index (SAVI). *Remote Sensing of Environment*, 25(3), 295-309.

10. Kalita, R.M., Das, A.K., & Nath, A.J. (2017). Carbon stock and sequestration potential in biomass of tea agroforestry system in Barak Valley, Assam, North East India. *International Journal of Ecology and Environmental Sciences*, 42(5), 107-114.

11. Kalita, R.M., Das, A.K., & Nath, A.J. (2015). Allometric equations for estimating above-and belowground biomass in Tea (*Camellia sinensis* (L.) O. Kuntze) agroforestry system of Barak Valley, Assam, northeast India. *Biomass and Bioenergy*, 83, 42-49.

12. Kalita, R.M., Das, A.K., & Nath, A.J. (2014). Comparative study on growth performance of two shade trees in tea agroforestry system. *Journal of environmental biology*, 35(4), 699.

[10, 11, 12 are the exact same authors, so why are they not in chronological order?]

13. Kalita, R.M., Nandy, S., Srinet, R., Nath, A. J., & Das, A.K. (2022). Mapping the spatial distribution of aboveground biomass of tea agroforestry systems using random forest algorithm in Barak valley, Northeast India. *Agroforestry Systems*, 96(8), 1175-1188.

14. Kamau, D.M., Spiertz, J.H.J., & Oenema, O. (2008). Carbon and nutrient stocks of tea plantations differing in age, genotype and plant population density. *Plant and Soil*, 307, 29-39.

15. Kaufman, Y.J., & Tanre, D. (1992). Atmospherically resistant vegetation index (ARVI) for EOS-MODIS. *IEEE transactions on Geoscience and Remote Sensing*, 30(2), 261-270.

16. Kc, Y.B., Liu, Q., Saud, P., Gaire, D., & Adhikari, H. (2024). Estimation of Above-Ground Forest Biomass in Nepal by the Use of Airborne LiDAR, and Forest Inventory Data. *Land*, 13(2), 213.

17. Mahato, T., Parida, B.R., & Bar, S. (2024). Assessing tea plantations biophysical and biochemical characteristics in Northeast India using satellite data. *Environmental Monitoring and Assessment*, 196(3), 327.

18. Mallik, P., & Ghosh, T. (2022). Impact of climate on tea production: a study of the Dooars region in India. *Theoretical and Applied Climatology*, 147(1), 559-573.

19. Navitha, B., & Sethurajan, S. (2018). The problems and prospects of Indian tea exports industries. *International Journal of Research and Analytical Reviews*, 5(3), 696-700.

20. Pandey, P.C., Srivastava, P.K., Chetri, T., Choudhary, B.K., & Kumar, P. (2019). Forest biomass estimation using remote sensing and field inventory: a case study of Tripura, India. *Environmental Monitoring and Assessment*, 191, 1-15.

21. Ragini, H.R., Debnath, M.K., Gupta, D.S., Deb, S., & Ajith, S. (2023). Modelling and Monitoring Land use: Land Cover Change Dynamics of Cooch Behar District of West Bengal using Multi-Temporal Satellite Data. *Agricultural Research*, 12(4), 387-396.

22. Roujean, J.L., & Breon, F.M. (1995). Estimating PAR absorbed by vegetation from bidirectional reflectance measurements. *Remote Sensing of Environment*, 51(3), 375-384.
23. Rouse, J.W., Haas, R.H., Schell, J.A., & Deering, D.W. (1974). Monitoring vegetation systems in the Great Plains with ERTS. *NASA Spec. Publ.*, 351(1), 309.
24. Salunkhe, O., Khare, P.K., Kumari, R., & Khan, M.L. (2018). A systematic review on the aboveground biomass and carbon stocks of Indian forest ecosystems. *Ecological Processes*, 7, 1-12.
25. Salunkhe, O.R., Valvi, G. R., Singh, S., Rane, G. M., Khan, M.L., Saxena, V., & Khare, P.K. (2023). Forest carbon stock and biomass estimation in West Central India using two allometric models. *Carbon Research*, 2(1), 9.
26. Sandeep, S., Siveram, M., Sreejesh, K.K., & Thomas, T.P. (2015). Evaluating generic pantropical allometric models for the estimation of above-ground biomass in the teak plantations of Southern Western Ghats, India. *Journal of Tropical Forestry and Environment*, 5(1).
27. Su, H., Shen, W., Wang, J., Ali, A., & Li, M. (2020). Machine learning and geostatistical approaches for estimating aboveground biomass in Chinese subtropical forests. *Forest Ecosystems*, 7, 1-20.
28. Tea Board of India, Tea statistics, Government of India, under Ministry of Commerce & Industry, 2014 , <http://teaboard.gov.in>.
29. Tucker, C.J. (1979). Red and photographic infrared linear combinations for monitoring vegetation. *Remote sensing of Environment*, 8(2), 127-150.
30. Wang, G., Liu, S., Liu, T., Fu, Z., Yu, J., & Xue, B. (2019). Modelling above-ground biomass based on vegetation indexes: a modified approach for biomass estimation in semi-arid grasslands. *International Journal of Remote Sensing*, 40(10), 3835-3854.