

Original Research Article

NUTRIENT STATUS OF SOIL OF SUGARCANE AREA OF NAVSARI DISTRICT

ABSTRACT

Sentinel 2 satellite data from the year 2021 were acquired from the Copernicus site to identify the sugarcane producing area in the Navsari district. Hybrid classification approach *i.e.*, supervised and unsupervised with ground truth data were applied using ERDAS IMAGINE software. After image classification, 2.5 km x 2.5 km grid was prepared in Q-GIS software which along with classified sugarcane area were overlapped for site identification. Then, random soil surface and sub-surface samples were collected with reference from grid of intensive sugarcane growing area. The available nitrogen, phosphorus, potassium, DTPA-Fe, DTPA-Mn, DTPA-Zn and DTPA-Cu of surface soil ranged from 132.19 to 428.65 kg ha⁻¹, 18.48 to 107.32 kg ha⁻¹, 202.34 to 359.39 kg ha⁻¹, 0.97 to 29.90 ppm, 1.10 to 29.63 ppm, 0.20 to 6.89 ppm and 1.02 to 11.69 ppm while sub-surface soil varied from 101.91 to 388.62 kg ha⁻¹, 10.16 to 99.57 kg ha⁻¹, 138.66 to 323.35 kg ha⁻¹, 0.35 to 24.97 ppm, 0.20 to 29.08 ppm, 0.05 to 3.64 ppm and 0.21 to 8.07 ppm respectively. The soils of sugarcane growing area of Navsari district showed low OC, available N and S while other nutrients were normal in range for sugarcane cultivation.

Keywords: Surface soil, sub-surface soil, nutrients, available nitrogen, phosphorus, potassium,

DTPA-Fe, Mn, Zn, Cu

1 **Introduction:**

The declining scenario in agricultural land and the growing food demand needs attention to optimized use of soil resources. The systematic soil survey provides an understanding of the nature and type of soil, its limitations, potential and sustainability for different land uses. The evaluation of characteristics and classification of soil provides information on the various morphological, physical, chemical and mineralogical properties of the soil (Ukutet *et al.*, 2014). These properties show complexity, spatial and temporal variety across the landscape and are very important for developing an effective land-use system for sustainable increase of agricultural production (Pulakeshi *et al.*, 2014).

Comment [O11]: An alternative title could be:

"Assessment of Soil Nutrient Dynamics in Sugarcane Cultivation Areas of Navsari District: Implications for Sustainable Agriculture"

Comment [O12]: The abstract demands substantial improvement to bolster its organization and clarity, as it currently lacks explicit objectives crucial for a comprehensive overview of the work. Additionally, there is a need for clearer articulation of the methodology employed in the study, as the existing description is somewhat ambiguous. Furthermore, the abstract could benefit from a more nuanced presentation of the research findings, as the current representation lacks depth and fails to convey the significance of the outcomes. To enhance the overall quality, it would be advantageous to incorporate key insights and potential implications of the study.

Comment [O13]: Ensure that acronyms are explicitly defined the first time they appear in the text. Please review the entire paper to confirm that each acronym is introduced upon its initial occurrence. Additionally, contemplate the inclusion of a table in the figures section that consolidates all acronyms for convenient reference when required by readers.

Comment [O14]: The literature review requires a heightened level of critical examination. It is essential to delve deeper into the existing literature, emphasizing the need for a more discerning perspective to not only identify gaps and limitations but also to scrutinize the methodology and sources used in the reviewed studies. Additionally, the review lacks a cohesive synthesis of the literature, making it challenging for readers to grasp the overarching themes and contributions of various studies. Furthermore, there is an opportunity to enhance the engagement with contrasting viewpoints and divergent arguments within the literature, fostering a more comprehensive understanding of the subject matter.

Sugarcane (*Saccharum officinarum*) is a vital crop that serves as a primary source of sugar and bioenergy production globally. Sugarcane is a widely cultivated crop in India and also an important cash crop of South Gujarat. India is the second largest producer of sugarcane contributing 306 million tons production and occupies about 4.4 million ha area (Anon., 2017). In the agricultural and industrial economy of the country, it plays a crucial role. India is one of the biggest sugar producers and close competition with Brazil for its first place. Sugarcane is cultivated in 222,960 hectares in Gujarat (Anon., 2023).

Navsari district in the vibrant state of Gujarat, India, stands as a pivotal region for sugarcane cultivation, contributing significantly to the nation's sugar and agro-industry. Navsari district comes under south Gujarat heavy rainfall agro-climatic zone. Navsari district consists of six talukas. These talukas are Navsari, Khergam, Jalalpore, Chikhli, Vansada and Gandevi. Sugarcane was cultivated in Navsari district in 15,194 ha in 2019-20 which slightly reduced to 15,026 ha in 2020-21 with production of 9.68 lakh MT and 9.58 lakh MT respectively (Anon., 2023).

2 Materials and Methods:

The study was conducted in Navsari district of south Gujarat during the year 2022-2023. Monsoon generally commences from the second fortnight of June and retreats by middle of September to end of September with an average annual rainfall of 1767.3 mm. The data indicated that the maximum temperature ranged between 26.4 to 39.5 °C while the minimum temperature ranged between 10.9 to 27.7 °C during the experiment season December-2021 to February-2023 respectively. The maximum relative humidity was between 68 and 98 % while the minimum relative humidity was between 20 % and 97 % during the experiment season December-2021 to February-2023 while bright sunshine hours day⁻¹ was between 0.0 to 10.2 hours.

Sentinel 2 satellite data from the year 2021 were acquired from the Copernicus site to identify the sugarcane producing area in the Navsari district. Hybrid classification approach *i.e.*, supervised and unsupervised with ground truth data were applied using ERDAS IMAGINE software. After image classification, 2.5 km X 2.5 km grid was prepared in Q-GIS software. Classified sugarcane area and 2.5 X 2.5 km grid were overlapped for site identification. Then, random soil samples were collected with reference from grid of intensive sugarcane growing

Comment [O15]: At the end of the introduction, it is essential to clearly and explicitly state the objectives of the article. This section helps the reader become familiar with the purpose and overall direction of the research, leading to a better understanding of the content and significance of the article. It is recommended that the objectives be formulated in a way that clearly presents the research questions or hypotheses that you intend to explore.

Comment [O16]: In the section introducing the study area, the soil characteristics, meteorological data, soil classification, and types of moisture and temperature regimes should be detailed comprehensively.

area. From each grid soil samples were collected at a depth of 0-22.5 and 22.5-45 cm by adopting standard procedure (Anon., 1971). The latitude and longitude were also recorded for each sample point with the help of portable Global Positioning System (GPS). 179 surface and 179 subsurface soil samples were collected from all over Navsari district of sugarcane growing area. Out of 179 grids from which soil samples were collected, 19, 24, 40, 41, 16 and 39 grids were from Gandevi, Jalalpore, Navsari, Vansda, Khergam and Chikhli taluka respectively.

Soil available nitrogen was determined by using the alkaline potassium permanganate method (Subbiah and Asija, 1956). Soil available phosphorus was determined by following the spectrometric (Extraction with 0.5 M NaHCO₃, pH 8.5) method (Olsen *et al.*, 1954). Soil available potassium was determined by following flame photometric (Extraction with 1N NH₄OAc) method (Jackson, 1967). DTPA-extractable Fe, Mn, Zn Cu, were determined from soil samples by using atomic absorption spectrophotometer method as suggested by Lindsay and Norvell, (1978).

3 RESULTS AND DISCUSSION

3.1 Available Nitrogen (N)

In surface soil of Vansdal taluka available nitrogen ranged between 132.19-428.65 kg ha⁻¹ which was maximum, followed by 141.17-409.14 kg ha⁻¹ in Navsari taluka, 158.73-359.84 kg ha⁻¹ in Khergam taluka, 141.46-403.45 kg ha⁻¹ in Jalalpore taluka, 137.14-391.83 kg ha⁻¹ in Chikhli taluka and 152.27-354.62 kg ha⁻¹ in Gandevi taluka. However, the available nitrogen content was highest in Vansdal taluka with mean value in sub-surface soil samples being 197.14 kg ha⁻¹ followed by Navsari (186.92 kg ha⁻¹), Khergam (182.27 kg ha⁻¹), Gandevi (176.80 kg ha⁻¹), Chikhli (164.15 kg ha⁻¹) and Jalalpore (159.78 kg ha⁻¹) taluka. The available nitrogen of surface and sub-surface soil samples were low to medium.

The concentration of nitrogen decrease with the increase in depth might be due to the decreasing trend of soil organic carbon with depth. The similar result was also reported by Choudhary *et al.* (2019) in soils of Navsari district, Gujarat. The low nitrogen content could be attributed to soil management, varied application of FYM and fertilizer to previous crops. Another reason for low nitrogen content was clay mineral content into soil which decreases the availability of nitrogen due to fixation and volatilization losses. Similar result was reported by Patil *et al.* (2016) in soils of Dindur sub-watershed of Karnataka.

Comment [O17]: Detailed Explanation of Methods: The section on Materials and Methods provides a good overview, but consider providing more detailed explanations for specific steps.
5. A more robust development of the results and discussion section is warranted to ensure a comprehensive analysis of the findings.

Comment [O18]: The statistical analyses should be described in detail.

3.2 Available Phosphorus (P_2O_5)

The available phosphorus of the surface soil samples ranged from 18.48 kg ha⁻¹ observed in MotiBhamti village of Vansdataluka to 107.32 kg ha⁻¹ observed in Kothamadi village of Jalalpore taluka with an average of 70.56 kg ha⁻¹ while available phosphorus of the sub-surface soil samples varied from 10.16 kg ha⁻¹ observed in Sukhabari village of Vansda taluka to 99.57 kg ha⁻¹ observed in Gholar village of Chikhli taluka with an average of 57.39 kg ha⁻¹. The available phosphorus of surface and sub-surface soils were low to high. 0.41 per cent, 30.05 per cent and 69.55 per cent of the surface soils sample were classified into the low, medium and high available phosphorus content categories, respectively and in the case of sub-surface soils sample 2.03 per cent of soils were in the low, 53.19 into the medium and 44.78 per cent into the high categories of availability.

The decrement observed in soil available phosphorus in sub-surface soil probably due to confinement of crop cultivation to the rhizosphere and supplementing the depleted phosphorus by external sources *i.e.*, fertilizers, presence of free iron oxide and exchangeable Al³⁺ in smaller amount as reported by Thangasamy *et al.* (2005) and Sekhar *et al.* (2014). The higher soil available phosphorus in surface soil might be attributed to fixed phosphorus pool that contains inorganic phosphate compounds which are resistant to mineralization by microorganisms in soil as noted by Bharteey *et al.* (2017). The decrease in soil available phosphorus with increase in soil depth could be attributed to fixation of released phosphorus by clay mineral and its removal as enumerated by Supriya *et al.* (2019).

The available P_2O_5 content in surface as well as subsurface soils of all talukas except Vansdataluka were in medium to high category. The reason of higher available P_2O_5 content might be the higher application of varying quantum of inorganic P-fertilizers in irrigated soils. Similar trends also observed by Negash and Mohammed (2014).

3.3 Available Potassium (K_2O)

The available potassium of the surface soil samples ranged from 202.34 kg ha⁻¹ observed in Gadat village of Gandevi taluka to 359.39 kg ha⁻¹ observed in Vad village of Khergam taluka with an average of 283.73 kg ha⁻¹ while available potassium of the sub-surface soil samples varied from 138.66 kg ha⁻¹ observed in Pathari village of Gandevi taluka to 323.35 kg ha⁻¹ observed in Chikhli village of Chikhli taluka with an average of 235.94 kg ha⁻¹. The available

potassium of surface and sub-surface soil samples were medium to high while sub-surface soil samples were low to high.

Overall, 0.00 percent, 40.66 percent and 59.34 percent of the surface soils sample were classified into the low, medium and high available potassium content categories, respectively and in the case of sub-surface soil samples 0.88 percent of soils were in the low, 84.01 into the medium and 15.11 percent into the high categories of K_2O availability.

In the present study, it was observed that soil available potassium decreased with increase in soil depth may be attributed to more intense weathering, release of labile potassium from organic residue, application of potash fertilizer and upward translocation of potassium fertilizer from lower depth along with capillary rise of ground water as found by Sekhar *et al.* (2014). The finding is consistent with earlier work as reported by Thangasamy *et al.* (2005), Ashokkumar and Prasad (2010), Bharteey *et al.* (2017) and Kumar *et al.* (2017). High available K status in major surface and sub-surface soils of study area was probably due the presence of high K-bearing minerals like, feldspar and mica in the parent material. Besides, addition of organic manures might attribute to interaction of organic matter with clay leading to direct addition of potassium in the available form as reported earlier by Paramasivan and Jawahar (2014) and Sharma *et al.* (2020). Thus, the high status of available K in soils indicated that no measures are required for K-management, as available K is quite sufficient to fulfill the crop requirement.

3.4 DTPA-Extractable Iron (Fe)

The DTPA-Fe of surface and sub-surface soil samples were low to high. In case of surface soil samples, 25.01 percent of soil samples were deficient, 35.18 percent were marginal and percent were adequate in DTPA-Fe while in case of sub-surface soil samples, 56.10 percent were deficient, 23.63 percent were marginal and 20.27 percent were adequate in DTPA-Fe. The mean value of DTPA-extractable iron (Fe) in surface soils followed an ascending order: Khergam (13.65 ppm) < Chikhli (12.52 ppm) < Jalalpore (11.37 ppm) < Navsari (10.74 ppm) < Vansda (9.87 ppm) < Gandevi (9.08 ppm). The mean value of DTPA-extractable iron (Fe) in sub-surface soils followed an ascending order: Jalalpore (8.19 ppm) < Khergam (7.07 ppm) < Navsari (6.86 ppm) < Chikhli (6.36 ppm) < Gandevi (5.61 ppm) < Vansda (5.25 ppm). The reason for deficient or marginal DTPA-Fe was low soil organic carbon, higher pH value and $CaCO_3$ content in soils. Rengel (2007) stated that organic matter and manure applications affect the

immediate and potential availability of micronutrient cations, because micronutrient cations-form organo-metallic complexes as chelates with certain organic molecules and soluble chelates can increase the availability of the micronutrients.

Here, the DTPA-extractable iron observed higher in surface soil over sub-surface soil which might be due to accumulation of soil organic carbon in surface soil as soil organic carbon due to its affinity, influence the solubility and availability of iron

Here, the DTPA-extractable iron observed higher in surface soil over sub-surface soil which might be due to accumulation of soil organic carbon in surface soil as soil organic carbon due to its affinity, influence the solubility and availability of iron by chelation effect, might protected iron from oxidation and precipitation which consequently increase the availability of iron as reported by Thangasamy *et al.* (2005), Kumar and Naidu (2012), Sekhar *et al.* (2014) and Supriya *et al.* (2019). Another reason might be due to precipitation of iron by calcium carbonate concretion and high pH of sub-surface soil which decrease its availability in sub-surface soil as noted by Sekhar *et al.* (2014) and Supriya *et al.* (2019). High fineness of soil texture results in higher DTPA-extractable iron as finer fraction helpful in improving structure and aeration of soil as enumerated by Thangasamy *et al.* (2005).

3.5 DTPA-extractable Mn

The DTPA-Mn of the surface soil samples ranged from 1.10 ppm observed in Khundh village of Chikhli taluka to 29.36 ppm observed in Sagra village of Jalalpore taluka with an average of 17.76 ppm while DTPA-Mn of the sub-surface soil samples varied from 0.20 ppm observed in Khundh village of Chikhli taluka to 29.08 ppm observed in Acchavani village of Khergam taluka with an average of 11.06 ppm. The DTPA-Mn of surface and sub-surface soils were low to high.

The overall results revealed that the major surface soils of Navsari district fall majorly into adequate (≥ 10 ppm) and marginal (5-10 ppm) category available manganese status. However, the sub-surface soil samples of Navsari district majorly fall into the marginal category (5-10 ppm) and adequate category. An increase in clay content enhances the exchangeable sites of soil colloids, thereby improving their holding capacity. This, in turn, protects against precipitation and oxidation while increasing the availability and solubility of nutrients, as also reported by AbdelRahman *et al.* (2016) in the soils of Chamranagar district, Karnataka, India.

The DTPA- manganese decreased with increase in calcium carbonate content and soil depth as reported by Supriya *et al.* (2019). Thangasamy *et al.* (2005) found that with increase in soil organic carbon and clay content of soil, there is increase in DTPA- extractable manganese as it improves structure and aeration condition of soil and its availability decrease with increase in activity of soil microorganisms which oxidizes soluble manganese.

3.6 DTPA-Extractable Zinc

The DTPA-Zn of the surface soil samples ranged from 0.20 ppm observed in Sarona village of Navsari taluka to 6.89 ppm observed in Dhaman and Adada village of Navsari taluka with an average of 1.65 ppm while DTPA-Zn of the sub-surface soil samples varied from 0.05 ppm observed in Bamanvel and Ambach village of Chikhli taluka to 3.64 ppm observed in Ashtgam village of Navsari taluka with an average of 0.85 ppm. The available zinc of surface and sub-surface soils were low to high.

The behaviour of DTPA-Zn paralleled the availability of DTPA-Fe in the soils of the Navsari district. The proportionately higher availability of DTPA- Zn in the soils might be attributed to the reduced pH, which enhances the supply of available Zn. The results were in good agreement with the findings of Arunachalam *et al.* (2013).

The lower DTPA-extractable zinc content was found with increase in soil pH and decrease in organic matter which resulted in formation of insoluble compound of zinc like insoluble calcium zincate as reported by Kumar and Naidu (2012), Sekhar *et al.* (2014) and Supriya *et al.* (2019). The surface soil showed higher DTPA-extractable zinc content than sub-surface soil which may be attributed to variable intensity of pedogenic process and more complexing with organic matter which results in chelating of zinc as noted by Kumar *et al.* (2017).

3.7 DTPA-Extractable Cu

The DTPA-Cu of the surface soil samples varied from 1.02 ppm observed in Amri village of Navsari taluka to 11.69 ppm observed in Ganghor village of Gandevi taluka with an average of 4.83 ppm while DTPA-Cu of the sub-surface soil samples varied from 0.21 ppm observed in Amri village of Navsari taluka to 8.07 ppm observed in Borigavtha and Rumla village of Vandsa and Chikhli taluka with an average of 2.86 ppm. The DTPA-Cu of surface soil samples were high while sub-surface soil samples were medium to high.

The overall results revealed that majorly all surface and sub-surface soils of Navsari District came under “adequate” DTPA-Cu category (> 0.40 ppm). The mean value of Cu in both surface and sub-surface soil, were arranged in following ascending order viz., Khergam (5.22 ppm) <Vansda (5.11 ppm) <Navsari (4.94 ppm) <Gandevi (4.91 ppm) <Chikhli (4.57 ppm) <Jalalpore (4.21 ppm) in surface soils and Navsari (3.02 ppm) <Gandevi (2.88 ppm) <Vansda and Chikhli (2.85) <Jalalpore (2.71 ppm) <Khergam (2.65 ppm) in sub-surface soils sample. Irrespective of surface and sub-surface soil samples, all were classified within the adequate category according to percentage distribution. Similar result reported by Shirgireet *et al.* (2015) in soils of coastal Jamnagar district in Saurashtra region of Gujarat and Choudhary *et al.* (2019) in soils of paddy and sugarcane growing areas of Navsari district in Gujarat.

The chelating agent of organic compounds that are released during the decomposition of organic matter left after crop harvesting and higher biological activity might be the reason of high soil DTPA-extractable copper and manganese content as reported by Thangasamy *et al.* (2005), Kumar and Naidu (2012), Sekhar *et al.* (2014) and Kumar *et al.* (2017). The organic acid released during the decomposition of organic matter solubilizes copper by chelation and complexation and as a result of organic binding, there is more dissolved copper in solution than normally occurs in absence of organic matter as noted by Thangasamy *et al.* (2005). Organic matter act as chelating agent for complexation of these micronutrients which reduces their adsorption, oxidation and precipitation into unavailable form, so it increases availability of DTPA-extractable micronutrients as found by Narsaiah *et al.* (2018). Similar line of work for DTPA-extractable micronutrients was also reported by Sekhar *et al.* (2014), Kumar *et al.* (2017), Meena and Mathur (2017) and Sekhar *et al.* (2017).

4 CONCLUSION

Study of available nutrients in soils to ascertain their present fertility conditions is important to maintain soil fertility and sugarcane crop productivity. The soils of sugarcane growing area of Navsari district showed low OC, available N and S while other nutrients were normal in range for sugarcane cultivation. There is a need for correcting deficiencies of specific nutrients for sustained crop production. Thus, evaluating and assessing nutrient status is a must under various soil survey systems in order to recommend soil and crop specific nutrients.

REFERENCES

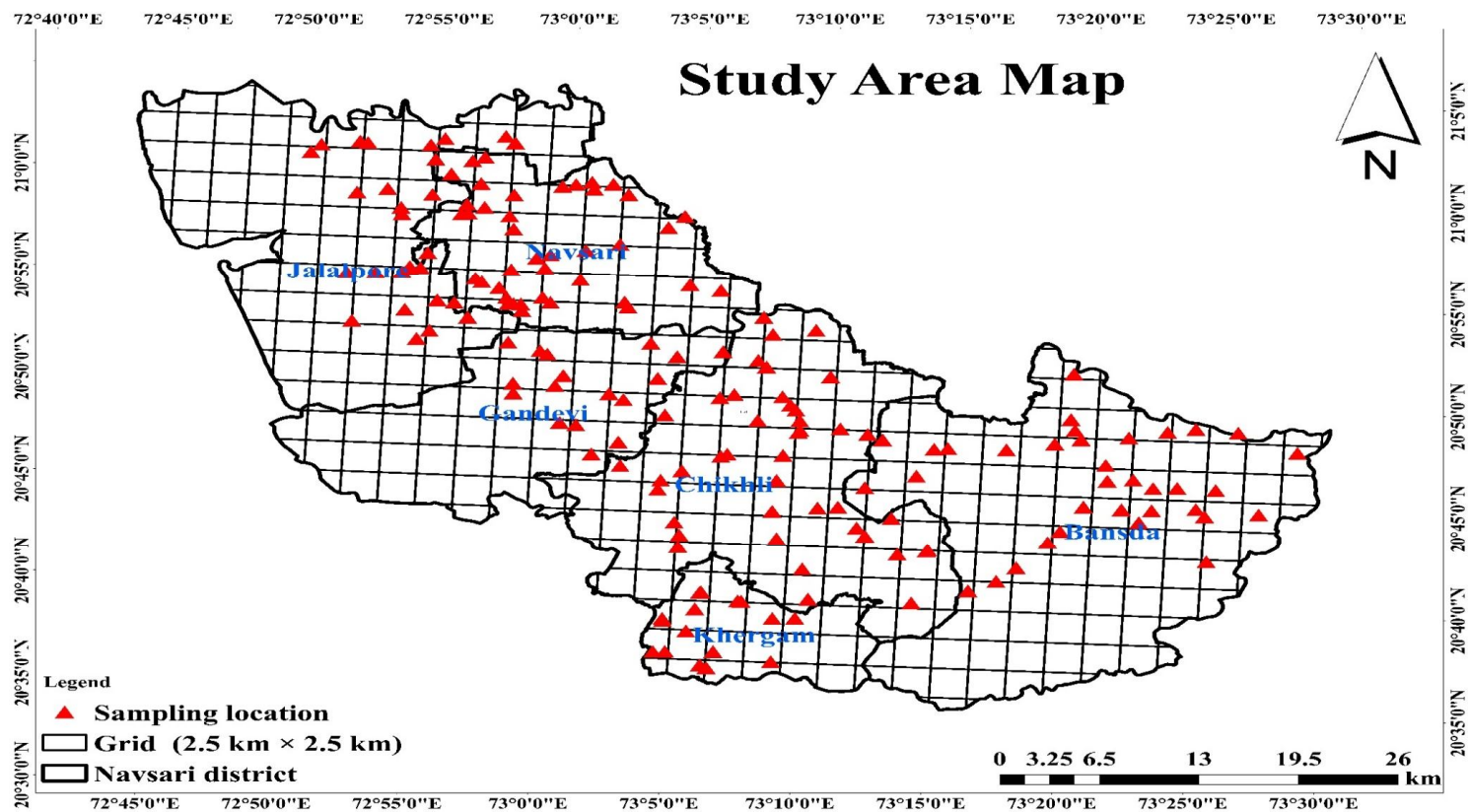
Comment [O19]: While the paper adeptly sets the stage by exploring aspects like plant growth parameters, there is a recommendation to introduce an additional section that delves into a comprehensive review of alternative technologies. This fresh segment should encompass a comparative analysis of these technologies, outlining their respective merits and demerits. It is crucial to underscore the advantages of the proposed process compared to conventional methods. This augmentation will not only bolster the scientific justification of the paper but also furnish readers with a holistic grasp of the broader spectrum of pertinent methods. Although the current methods are well-organized and thoroughly elucidated, the absence of this comparative insight might obscure the scientific rationale underpinning the proposed approach.

Comment [O110]: Concluding Section: To enhance the paper, it is recommended to include a well-structured summary and conclusion section following the results and discussions. The current transition to the conclusion seems abrupt and could be refined. Specifically, the summary should underscore the significance of the study's findings, and the conclusion needs expansion to clearly articulate the novelty of the model. Additionally, consider integrating policy recommendations, discussions on relevant environmental laws, implications for future research, and an acknowledgment of the study's limitations to provide a more thorough and informative conclusion.

- Abdel Rahman, M. A. E.; Natarajan, A. and Hegde, R. (2016). Assessment of land suitability and capability by integrating remote sensing and GIS for agriculture in Chamarajanagar district, Karnataka, India. *The Egyptian J. Remote Sensing and Space Sciences*, **19**(1): 125-141.
- Anonymous. (1971). Soil Survey Manual, All India Soil and land survey Org. (II edn.), IARI, New Delhi.
- Anonymous. (2017). Food and Agriculture Organization of the United Nations. Retrieved from <http://www.fao.org/faostat/en/#data/QC> [Accessed 8 June, 2022].
- Anonymous. (2023). Agriculture, Navsari District, Government of India. Retrieved From <https://navsari.nic.in/agriculture/#:~:text=The%20geographical%20area%20of%20Navsari.about%2046%2C606%20hectares%20are%20rainfed.>
- Arunachalam, P.; Kannan, P.; Prabukumar, G. and Govindaraj, M. (2013). Zinc deficiency in Indian soils with special focus to enrich zinc in peanut. *Afr. J. Agric. Res.*, **8**(50): 6681-6688.
- Ashokkumar, H. P. and Prasad, J. (2010). Some typical sugarcane-growing soils of Ahmadnagar district of Maharashtra: Their characterization and classification and nutritional status of soils and plants. *J. Indian Soc. Soil Sci.*, **58**(3): 257-266.
- Bharteey, P. K.; Singh, Y. V.; Sharma, P. K. S.; Kumar, M. and Kumar, A. R. (2017). Available macro nutrient status and their relationship with soil physico-chemical properties of Mirzapur district of Uttar Pradesh, India. *Int. J. Curr. Microbiol. and App. Sci.*, **6**(7): 2829-2837.
- Choudhary, S.; Patel, J.; Gavit, C. S. and Gadhavi, B. K. (2019). Vertical distribution of available nutrients in soils of paddy and sugarcane growing areas of Navsari district in Gujarat. *Int. J. Chemical Studies*, **7**(6): 810-814.
- Jackson, M. L. (1967). Soil chemical analysis. Prentice Hall of India Private Limited, New Delhi., pp.205.
- Kumar, R.; Patel, J. M.; Pawar, S. L.; Singh, N. and Patil, R. G. (2017). Land characterization and soil-site suitability- evaluation of banana growing areas of south Gujarat, India. *J. Appl. and Nat. Sci.*, **9**(4): 1962-1969.

- Kumar, Y. S. S. and Naidu, M. V. S. (2012). Characteristics and classification of soils representing major land forms in Vadamalpetamandal of Chittore district, Andhra Pradesh. *J. Indian Soc. Soil Sci.*, **60**(1): 63-67.
- Lindsay, W. L. and Norvell, W. A. (1978). Development of a DTPA micronutrient soil test for zinc, iron, manganese and copper. *Soil Sci. Society American J.*, **42**(1): 421-508.
- Meena, R. S. and Mathur, A. K. (2017). Available micronutrients in relation to soil properties of Ghatol Tehsil, Banswara district of Rajasthan, India. *Int. J. Curr. Microbiol. and App. Sci.*, **6**(7): 102-108.
- Narsaiah, E.; Ramprakash, T.; Chandinipatnaik, M.; Reddy, D. V. and Raj, G. B. (2018). Classification and characterization of soils of Eturunagaram division of Warangal district in Telangana state. *Int. J. Curr. Microbiol. and App. Sciences*, **7**(6): 582-594.
- Negash, H. and Mohammed, M. (2014). Soil fertility in Kokanagawo area of Lumme district in east shoa zone of Oromia region, Ethiopia. *East African J. Sci.*, **8**(1): 1-12.
- Olsen, S. R.; Cole, C. V.; Watanable, F. S. and Dean, L. A. (1954). Estimation of available phosphorus in soil by sodium carbonate. Hand Book of USDA, No. 60.
- Paramasivan, M. and Jawahar, D. (2014). Characterization, classification and crop suitability of some black cotton soils of southern Tamil Nadu. *Agropedology*, **24**(1): 111-118.
- Patil, P. L.; Kuligod, V. B.; Gundlur, S. S. and Katti, J. (2016). Soil fertility mapping in Dindur sub-watershed of Karnataka for site specific recommendations. *J. Indian Soc. Soil Sci.*, **64**(4): 381-390.
- Pulakeshi, H. B. P.; Patil, P. L. and Dasog, G. S. (2014). Characterization and classification of soil resources derived from chlorite schist in northern transition zone of Karnataka. *Karnataka J. Agric. Sci.*, **27**(1): 14-21.
- Rengel, Z. (2007). Cycling of micro-nutrients in terrestrial ecosystems. In: "Nutrient Cycling in Terrestrial Ecosystem". Springer-Verlag, Berlin, Heidelberg, pp. 93-121.
- Sekhar, C. C.; Balaguravaiah, D. and Naidu, M. V. S. (2014). Studies on genesis, characterization and classification of soils in central and eastern parts of Prakasam district in Andhra Pradesh. *Agropedology*, **24**(02): 125-137.
- Sekhar, C. C.; Naidu, M. V. S.; Ramprakash, T. and Balaguravaiah, D. (2017). Characterization and classification of soils in the central parts of Prakasam district in Andhra Pradesh, India. *Int. J. Curr. Microbiol. and App. Sci.*, **6**(10): 2699-2712.

- Sharma, R. P.; Jangir, A.; Tiwari, G.; Dash, B.; Naitam, R. K.; Kumar, N.; Singh, R. S.; Singh, S. K.; Chandran, P. and Dwivedi, B. S. (2020). "Land Resource Inventory of Jhagadia Taluka, Bharuch District, Gujarat on 1:10,000 Scale for Optimal Agricultural Land Use Planning, Using Geo-Spatial Techniques" NBSS Publ. No. 1138, NBSS&LUP, Nagpur, pp.1-150.
- Shirgire, S.T.; Savalia, S. G.; Misal, N. B. and Singh, N. (2015). Evaluation of soil constraints and soil-site suitability for sesame in the soils of coastal area of Jamnagar district of Gujarat. *Res. Environ. Life Sci.*, **8**(3):501-506.
- Subbiah, B. V. and Asija, G. L. (1956). A rapid procedure for the estimation of available nitrogen in soil. *Current Sci.*, **25**(1): 259-260.
- Supriya, K.; Naidu, M. V. S.; Kavitha, P. and Reddy, M. S. (2019). Characterization, classification and evaluation of soils in semi-arid region of Mahanadi mandal in Kurnool district of Andhra Pradesh. *J. Indian Soc. Soil Sci.*, **67**(2): 125-136.
- Thangasamy A.; Naidu M.; Ramavatharam N. and Reddy C. R. (2005). Characterization, classification and evaluation of soil resources in Sivagiri micro-watershed of Chittoor district in Andhra Pradesh for sustainable land use planning. *J. Indian Soc. Soil Sci.*, **53**(1): 11-21.
- Ukut, A. N.; Akpan, U. S. and Udoh, B. T. (2014). Characterization and classification of soils in steep sided hills and sharp crested ridges of Akwalbom State, Nigeria. *Net J. Agric. Sci.*, **2**(1): 50-57.



Map 1: Location of collection of soil and water samples of sugarcane growing area of Navsari district

Comment [O111]: The map of the study area should clearly indicate the country and province boundaries. The current figure is not easily understandable for the reader.

Table 1: Range, mean and category wise distribution of available nitrogen(N) at surface and sub-surface soil samples in sugarcane growing area

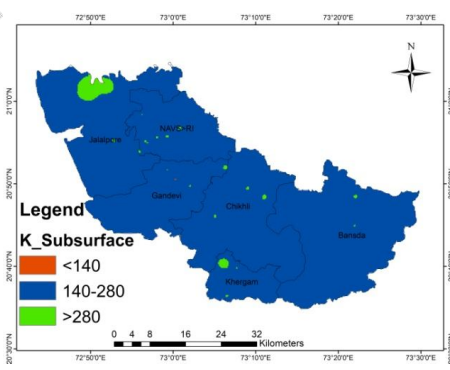
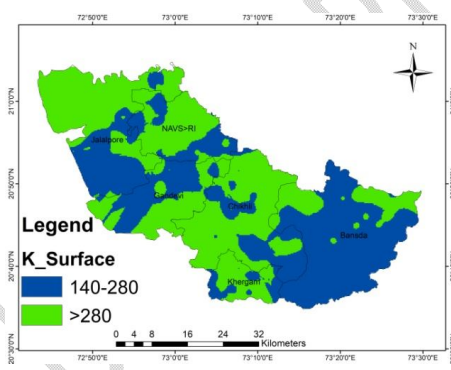
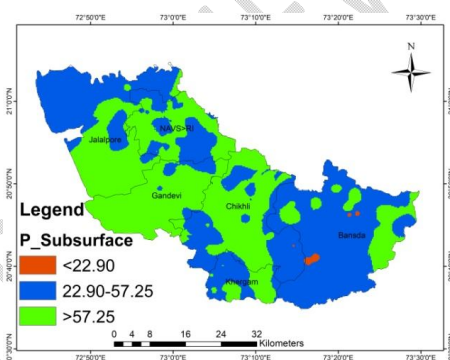
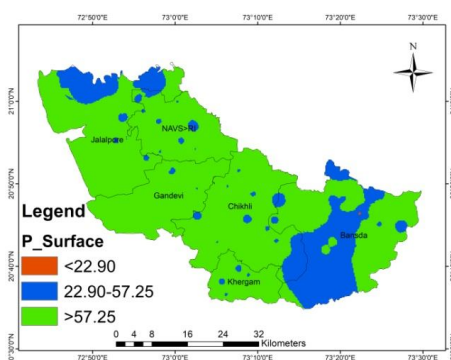
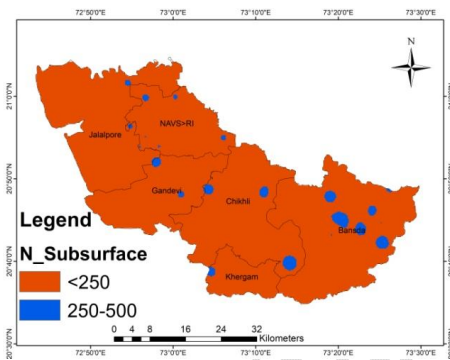
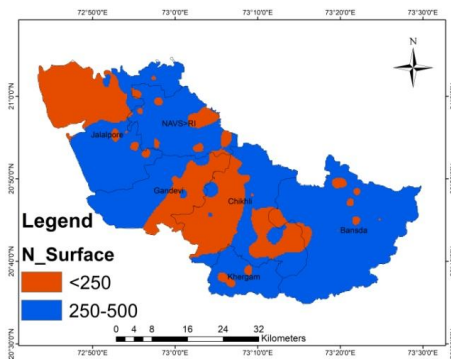
Taluka	No. of Samples	N (kg ha ⁻¹)		N Distribution (%)		
		Range	Mean	Low	Medium	High
0-22.5 cm depth						
Khergam	16	158.73-359.84	289.86	25.00	75.00	0.00
Vansda	41	132.19-428.65	299.46	24.39	75.61	0.00
Chikhli	39	137.14-391.83	244.10	48.72	51.28	0.00
Navsari	40	141.17-409.14	296.25	27.50	72.50	0.00
Jalalpore	24	141.46-403.45	258.17	54.17	45.83	0.00
Gandevi	19	152.27-354.62	243.09	57.89	42.11	0.00
OVERALL	179	132.19-428.65	274.38	39.61	60.39	0.00
22.5-45 cm depth						
Khergam	16	111.46-340.16	182.27	75.00	25.00	0.00
Vansda	41	118.21-388.62	197.14	78.05	21.95	0.00
Chikhli	39	101.91-373.86	164.15	92.31	7.69	0.00
Navsari	40	116.55-334.66	186.92	77.50	22.50	0.00
Jalalpore	24	110.45-321.56	159.78	95.83	4.17	0.00
Gandevi	19	110.93-322.67	176.80	89.47	10.53	0.00
OVERALL	179	101.91-388.62	179.17	84.69	15.31	0.00

Table 2: Range, mean and category wise distribution of available P₂O₅ of soil samples at surface and sub-surface soil samples in sugarcane growing area

Taluka	No. of Samples	P ₂ O ₅ (kg ha ⁻¹)		P ₂ O ₅ Distribution (%)		
		Range	Mean	Low	Medium	High
0-22.5 cm depth						
Khergam	16	40.26-97.32	71.95	0.00	25.00	75.00
Vansda	41	18.48-96.44	60.71	2.44	43.90	53.66
Chikhli	39	31.36-98.23	76.12	0.00	23.08	76.92
Navsari	40	32.39-99.33	75.09	0.00	22.50	77.50
Jalalpore	24	34.11-107.32	64.64	0.00	50.00	50.00
Gandevi	19	44.19-96.31	77.16	0.00	15.79	84.21
OVERALL	179	18.48-107.32	70.56	0.41	30.05	69.55
22.5-45 cm depth						
Khergam	16	30.38-88.58	54.16	0.00	62.50	37.50
Vansda	41	10.16-98.11	48.10	12.19	60.98	26.83
Chikhli	39	31.15-99.57	64.42	0.00	41.03	58.97
Navsari	40	30.11-91.36	59.61	0.00	50.00	50.00
Jalalpore	24	31.32-81.13	53.45	0.00	62.50	37.50
Gandevi	19	39.32-98.55	66.08	0.00	42.11	57.89
OVERALL	179	10.16-99.57	57.39	2.03	53.19	44.78

Table 3: Range, mean and category wise distribution of available potassium (K₂O) at surface and sub-surface soil samples in sugarcane growing area

Taluka	No. of Samples	K ₂ O (kg ha ⁻¹)		K ₂ O Distribution (%)		
		Range	Mean	Low	Medium	High
0-22.5 cm depth						
Khergam	16	233.09-359.39	289.20	0.00	62.50	37.50
Vansda	41	204.19-325.25	272.95	0.00	53.66	46.34
Chikhli	39	208.12-351.53	286.53	0.00	38.46	61.54
Navsari	40	221.18-348.63	287.89	0.00	27.50	72.50
Jalalpore	24	205.65-338.42	286.23	0.00	25.00	75.00
Gandevi	19	202.34-328.94	284.70	0.00	36.84	63.16
OVERALL	179	202.34-359.39	283.73	0.00	40.66	59.34
22.5-45 cm depth						
Khergam	16	173.45-323.35	246.94	0.00	75.00	25.00
Vansda	41	148.10-284.64	226.70	0.00	95.12	4.88
Chikhli	39	153.64-304.24	237.18	0.00	89.74	10.26
Navsari	40	171.36-287.12	236.77	0.00	85.00	15.00
Jalalpore	24	166.39-302.71	246.94	0.00	75.00	25.00
Gandevi	19	138.66-285.58	228.48	5.26	84.21	10.53
OVERALL	179	138.66-323.35	235.94	0.88	84.01	15.11



0-22.5 cm depth

22.5-45.0 cm depth

Map 2: N, P₂O₅ and K₂O of sugarcane growing soil

Comment [O112]: What is the basis for the classification of these maps? Why have you considered such a limited number of classes?

Table 4: Range, mean and category wise distribution of DTPA-Fe at surface and sub-surface soil samples in sugarcane growing area

Taluka	No. of Samples	DTPA-Fe (ppm)		DTPA-Fe Distribution (%)		
		Range	Mean	Deficient	Marginal	Adequate
0-22.5 cm depth						
Khergam	16	3.67-26.49	13.65	25.00	31.25	43.75
Vansda	41	1.43-24.46	9.87	26.83	39.02	34.15
Chikhli	39	0.97-29.30	12.52	10.26	38.46	51.28
Navsari	40	3.24-29.90	10.74	32.50	30.00	37.50
Jalalpore	24	3.71-26.85	11.37	29.17	25.00	45.83
Gandevi	19	3.17-28.08	9.08	26.32	47.37	26.32
OVERALL	179	0.97-29.90	11.10	25.01	35.18	39.81
22.5-45 cm depth						
Khergam	16	2.10-17.33	7.07	50.00	25.00	25.00
Vansda	41	0.35-16.15	5.25	63.41	24.39	12.20
Chikhli	39	0.56-16.36	6.36	56.41	20.51	23.08
Navsari	40	2.11-24.97	6.86	52.50	30.00	17.50
Jalalpore	24	1.92-20.09	8.19	45.83	20.83	33.33
Gandevi	19	1.92-21.40	5.61	68.42	21.05	10.53
OVERALL	179	0.35-24.97	6.45	56.10	23.63	20.27

Table 5: Range, mean and category wise distribution of DTPA-Mn at surface and sub-surface soil samples in sugarcane growing area

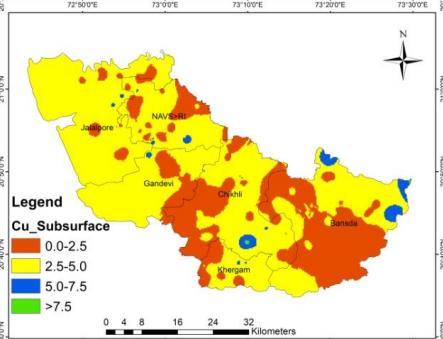
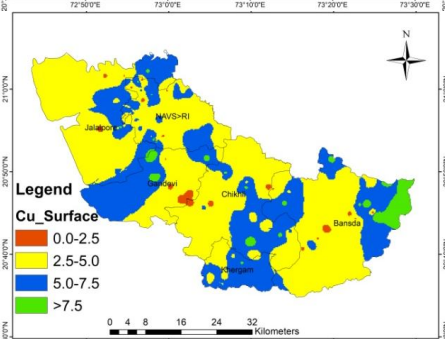
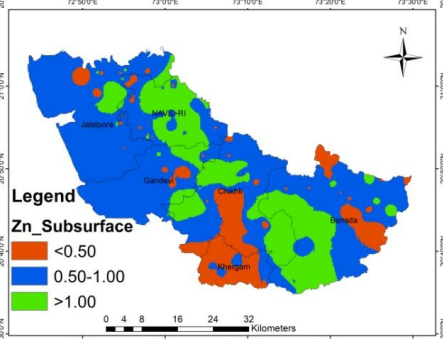
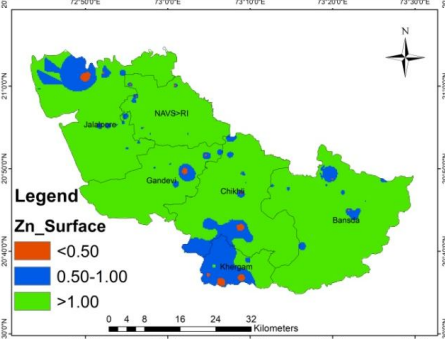
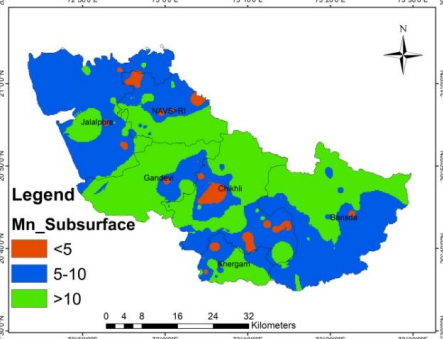
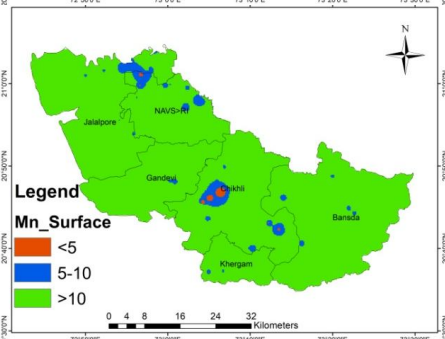
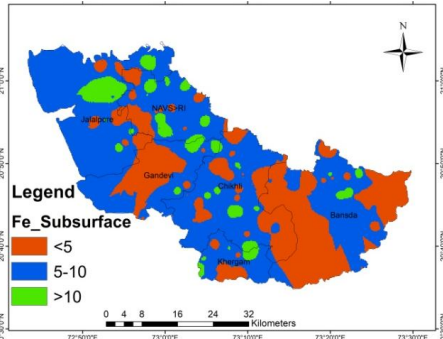
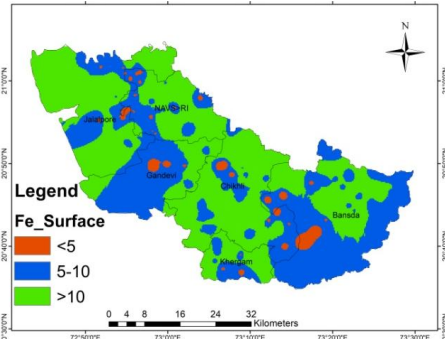
Taluka	No. of Samples	DTPA-Mn (ppm)		DTPA-Mn Distribution (%)		
		Range	Mean	Deficient	Marginal	Adequate
0-22.5 cm depth						
Khergam	16	4.16-28.85	17.32	6.25	18.75	75.00
Vansda	41	6.24-29.52	17.66	0.00	17.07	82.93
Chikhli	39	1.10-28.85	18.49	15.38	7.69	76.92
Navsari	40	4.41-29.02	16.91	2.50	22.50	75.00
Jalalpore	24	3.32-29.63	16.15	4.17	20.83	75.00
Gandevi	19	7.53-28.59	20.69	0.00	10.53	89.47
OVERALL	179	1.10-29.63	17.76	4.72	16.23	79.05
22.5-45 cm depth						
Khergam	16	1.07-29.08	9.71	25.00	37.50	37.50
Vansda	41	1.00-25.22	11.61	9.76	41.46	48.78
Chikhli	39	0.20-28.66	12.69	23.08	15.38	61.54
Navsari	40	1.20-24.14	11.17	15.00	37.50	47.50
Jalalpore	24	1.20-20.55	7.48	25.00	54.17	20.83
Gandevi	19	1.70-26.23	12.00	10.53	36.84	52.63
OVERALL	179	0.20-29.08	11.06	18.06	37.14	44.80

Table 6: Range, mean and category wise distribution of DTPA-Zn at surface and sub-surface soil samples in sugarcane growing area

Taluka	No. of Samples	DTPA-Zn (ppm)		DTPA-Zn Distribution (%)		
		Range	Mean	Deficient	Marginal	Adequate
0-22.5 cm depth						
Khergam	16	0.33-1.20	0.73	25.00	62.50	12.50
Vansda	41	0.42-6.39	1.98	9.76	19.51	70.73
Chikhli	39	0.22-6.08	1.54	7.69	20.51	71.79
Navsari	40	0.20-6.89	1.97	5.00	20.00	75.00
Jalalpore	24	0.28-3.94	1.39	25.00	16.67	58.33
Gandevi	19	0.21-5.41	1.61	15.79	21.05	63.16
OVERALL	179	0.20-6.89	1.65	14.71	26.71	58.59
22.5-45 cm depth						
Khergam	16	0.14-0.77	0.39	68.75	31.25	0.00
Vansda	41	0.06-3.09	0.95	34.15	31.71	34.15
Chikhli	39	0.05-2.66	0.81	38.46	30.77	30.77
Navsari	40	0.06-3.64	1.00	32.50	27.50	40.00
Jalalpore	24	0.08-2.01	0.81	41.67	25.00	33.33
Gandevi	19	0.19-3.08	0.81	31.58	42.11	26.32
OVERALL	179	0.05-3.64	0.85	41.19	31.39	27.43

Table 7: Range, mean and category wise distribution of DTPA-Cu at surface and sub-surface soil samples in sugarcane growing area

Taluka	No. of Samples	DTPA-Cu (ppm)		DTPA-Cu Distribution (%)		
		Range	Mean	Deficient	Marginal	Adequate
0-22.5 cm depth						
Khergam	16	1.32-7.78	5.22	0.00	0.00	100.00
Vansda	41	1.69-11.63	5.11	0.00	0.00	100.00
Chikhli	39	1.75-9.49	4.57	0.00	0.00	100.00
Navsari	40	1.02-11.68	4.94	0.00	0.00	100.00
Jalalpore	24	1.79-7.89	4.21	0.00	0.00	100.00
Gandevi	19	1.86-11.69	4.91	0.00	0.00	100.00
OVERALL	179	1.02-11.69	4.83	0.00	0.00	100.00
22.5-45 cm depth						
Khergam	16	0.84-4.93	2.65	0.00	0.00	100.00
Vansda	41	0.57-8.07	2.85	0.00	0.00	100.00
Chikhli	39	0.57-8.07	2.85	0.00	0.00	100.00
Navsari	40	0.21-6.89	3.02	0.00	2.50	97.50
Jalalpore	24	0.57-5.25	2.71	0.00	0.00	100.00
Gandevi	19	0.87-5.53	2.88	0.00	0.00	100.00
OVERALL	179	0.21-8.07	2.86	0.00	0.42	99.58



0 - 22.5 cm depth

22.5 -45.0 cm depth

Map3: Fe, Mn, Zn and Cu of sugarcane growing soil