

Review Article

GYNANDROMORPHISM IN SERICULTURE: A REVIEW

ABSTRACT

Sericulture is an agro-based industry. It is based on cultivation of host plants, rearing of silkworms and production of silk. There are four types of commercial silkworm i.e., mulberry, eri, muga and tasar. Among them, mulberry is only monophagous and the rest are polyphagous. In sericulture, gynandromorphism is too rare. Gynandromorphs are aberrant behaviours or traits that show both male and female features in a certain individual. There are mainly three types of gynandromorph- 1. Bilateral 2. Anterior-posterior 3. Sex piebald. Till now gynandromorphic moth is found only in Tasar, muga, mulberry and Attacus moth. If we compare the normal one with gynandromorphic moth then it is found that gynandromorphic moth is less active (characteristics) than normal ones. In 2010 only one muga gynandromorph was found at Lahdoigarh. There is no any evidence of eri gynandromorph. The causes of the Gynandromorphism are varied. It occurs due to mutation, UV radiation, temperature, or in interspecific hybrid cross. In this paper, Gynandromorphy in sericulture is discussed in brief manner.

Keywords:

Sericulture, Silkworms, Eri, Muga, Mulberry, Tasar, Attacus, Gynandromorph, Mutation, Inter-specific hybrid cross.

1. INTRODUCTION:

Although gynandromorphism is a rare phenomenon (Rajkumar *et al.*, 1998), it has been widely documented in animal taxa (Bernardino *et al.*, 2007). Since the early 20th century, researchers have been examining the factors that led to the emergence of this phenomena (Craig and Crosby, 2008) which was initially seen in birds and insects (Nihei and Carvalho, 2002). A gynandromorph is a genetically male-female hybrid that arises from the deletion of

a sex chromosome during early development, as seen in *Drosophila* (Morgan and Bridges, 1919). Alternatively, it could result from a bi-nucleate egg being fertilised twice, as observed in female heterogametic Lepidoptera. Consequently, a real gynandromorph's anatomy is made up of genetically distinct tissues with clearly defined male and feminine components (Morgan and Bridges, 1919, Morgan, 1907; Cockayne, 1935; Allen, 2011).

Sericulture, an agro based cottage industry often known as silk farming, is the raising of silkworms for the production of silk (Ssemuenze, *et al.*, 2021). Silk was believed to have first been produced in China (Czaplicki *et al.*, 2021). Sericulture is based on rearing of four silkworms *i.e.*, mulberry, eri, muga and tasar silkworm. Mulberry silkworm is monophagous and other three *i.e.*, muga, eri and tasar is polyphagous. In sericulture, gynandromorphism is too rare. Gynandromorphs are aberrant behaviours or traits that show both male and female features in a certain organism (Joshua *et al.*, 2015). Till now, only one muga gynandromorph has been found in CMER&TI, Lahdoigarh, Assam (Rajkhowa *et al.*, 2010) and only one *Attacus* moth has been found in Java (Lempke, 1981). Obara and their team examined the matting behaviour of experimentally produced gynandromorphy in *Bombyx mori* (Obara and Tamazawa, 1982). In 1993, Peigler reported a false gynandromorph. At first, he believed it to be a gynandromorph, when they looked at it magnificently, they saw it was a normal male moth with defective antennae. It might not be gynandromorphic to have all the opposing personalities. Gynandromorphs can be seen under the perfect magnification. In 2018, new research was published by Rathore and he found a gynandromorph where one side is male and other side is female but it shows femaleness (laid eggs).

A sex determination system is a biological system that determines the development of sexual characters in an organism. The determination of sex always involves genetics. There are various sex determination mechanisms like- male heterogametic *Drosophila melanogaster* with genetic combination of "XY" in male while "XX" in female, female heterogamety in silkworm, haplodiploidy in honeybees where "2n" genetic combination fertilized eggs become female while unfertilized "n" become male, paternal genome loss, polygenic and environmental sex determination etc. that are being used for sex determination in arthropods (Werren and Beukeboom, 1998; Heimpel and De Boer, 2008).

The silkworm has sexual reproduction. It has 28 pairs of chromosomes in haploid form, of which 2 pairs are involved in determining sex. Tanaka made the first scientific demonstration of sex chromosome-related inheritance in silk worms in 1916 and he found

that the type of sex chromosome in the silkworm is 'ZZ' in males and 'ZW' in females (Katsuma *et al.*, 2018).

To know the occurrence of gynandromorph we need to understand the sex determination mechanism of the silkworm.

Table 1: Sex determination with special reference to the ratio of sex chromosome to autosome

AUTOSOME	Z-CHROMOSOME	W-CHROMOSOME	SEX EXPRESSION
AA	Z	-	MALE
	ZZ	-	MALE
	ZZZ	W	FEMALE
AAA(3A)	ZZ	-	MALE
	ZZ	W	FEMALE
	ZZ	WW	FEMALE
AAAA(4A)	ZZZ	W	FEMALE
	ZZ	WW	FEMALE

2. GYNANDROMORPH:

A gynandromorph are individuals that contains both male and female characteristics. The term comes from the Greek word; gyne (female), andro (male), and morph 'form', and is used mainly in the field of entomology (Butler, 2017). Gynandromorphism has been observed in a wide range of organisms, but it is most typically found in species of butterflies, spiders, and birds that exhibit high sexual dimorphism (Werner, 2012). They gynanders are normally sterile and have less life period than normal ones.

2.1 TYPES OF GYNANDROMORPH :

The types of Gynandromorph are as follows [11]-

- I. **Bilateral gynandromorph:** Sometimes one half of the body shows female characters while other half shows male characters.
- II. **Anterior-posterior gynandromorph:** Anterior region of the animal body has the characteristics of one sex and posterior half region has the characteristics of other sex.

III. Sex piebalds: Body consists of female tissue having spots of male tissue scattered irregularly.

2.2 OCCURRENCE OF GYNANDROMORPH:

I. Loss or damage of a sex chromosome (Narita *et al.*, 2010):

Example includes *D. melanogaster*, where one of the basic factor in sex determination is the number of “X” chromosomes and autosomes. During mitotic division, if one “X” chromosome gets lost, then it will give rise to individuals with XX and XO cells. Hence, if the loss of X chromosome occurs in the 1st mitotic division, appearance of individuals with 50-50% male & female tissues occurs. The size of male part is directly proportional to the time of disappearance of “X” chromosome. The later the disappearance, smaller the male part in that individual.

II. From binucleated eggs (Narita *et al.*, 2010):

Double fertilization is another reason for occurrence of gynandromorphy in insects like *D. melanogaster* (Hollingsworth, 1955) & *Bombyx mori* (Goldschmidt and Katsuki, 1927). During oogenesis process in *B. mori*, if the polar body nucleus may accidentally remain in the egg together with the egg nucleus. These eggs will therefore have two nuclei (ZW). Two sperm cells that contain the Z chromosome fuse independently with the Z and W chromosomes as a result of fertilisation, producing male (ZZ) and female (ZW) tissues, respectively.

III. By Symbionts (Narita *et al.*, 2010):

Wolbachia bacteria are pervasive endosymbionts of arthropods and female arthropods affected by this bacteria lays unfertilized eggs that finally develops into female parthenogenetically. Elimination of this bacteria is done by application of antibiotics as well as high temperature which can produce male progeny (Fein *et al.*, 1992).

3. GYNANDROMORPHISM IN SERICULTURE:

3.1. TASAR SILKWORM:

The tasar word derived from the Sanskrit word ‘**trasara**’ (Vishakha *et al.*, 2020). Tasar silkworms are polyphagous in nature and they feed leaves of arjun, asan, ber, sal etc. In India

it is available in the states of Jharkhand, Chhattisgarh, Odisha, Andhra Pradesh and West Bengal.

In the year 2021, a bilateral gynandromorph was seen in Central Tasar Research and Training Institute, Ranchi, Jharkhand. This particular study has demonstrated that the gynandromorph's genitalia are identical to the female reproductive system, allowing it to mate with a normal male and produce fertile offspring. Further, the research on the progeny of gynandromorphs also demonstrated that their life cycles showed normal growth and development, and their economic traits has been well-documented (Mala *et al.*, 2021).

● **Characters observed** (Mala *et al.*, 2021):

Table 2: Comparison of Gynandromorph and normal Tasar moth (Mala *et al.*, 2021)

CHARACTER	NORMAL TASAR	GYNANDROMORPHIC TASAR
1. Egg laid	150-250 no.	133 no.
2. Hatching percentage	78.99%	77.44%
3. Weight of egg	9.8 mg	8-12 mg
4. Larval duration	28-36 days	35 days
5. Maximum larval weight	36g	30.2g
6. Cocoon weight	12.753g	9.648g
7. Pupal weight	10.646g	7.990g
8. Shell weight	2.106g	1.652g
9. Shell ratio	16.512%	17.120%
10. Moth colour	Male: light to dark brown Female: Grey to metallic brown	Brown and yellow
11. Antennae	Broad in male, narrow in female	Broad in male, narrow in female
12. Moth survivability	Male:4-6; female:8-10	10 days

13. Fat content in male	Male moth is smaller than female	Fat content is more in male
14. Life cycle	61-79 days	75 days

CHARACTERS

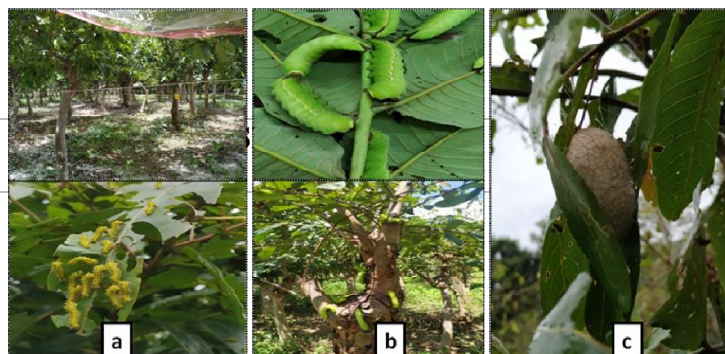


Fig1: Rearing of hatched out worms from gynandromorphous moth laid eggs under nylon net at CTR&TI, Ranchi (a) Chawki rearing (b) Late age rearing (c) Cocoon formation (Mala *et al.*, 2021)

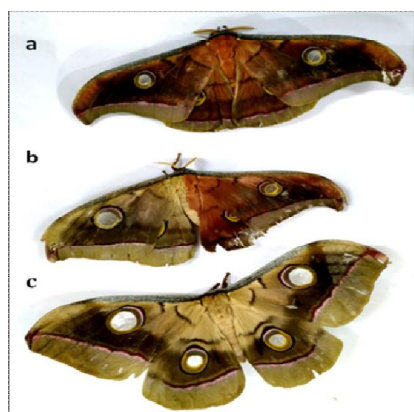


Fig 2: Female tasar moth (a), gynandromorphic tasar moth (b), male tasar moth (c) (Mala *et al.*, 2021)

Antennae	narrow	broader
Colour	yellow	brown
Wings and eyes spot	more prominent and broad	less prominent and broad
Forewings	sub triangular	sub triangular
Apical angle	pointed and termen is almost straight	prominently curved and termen appears to be s-shaped
Apical margin	apical margin not extended	apical margin is extended

In 2018, a female gynandromorphic tasar moth was found in BTSSO, Bilaspur, Chhattisgarh. After mating with a normal male with the gynandromorphic female, it laid about 116 eggs, 20 of which developed into larvae and were raised up to the third instar (Rathore *et al.*, 2018).

Table 3: Characters observed in female gynandromorphy in DABA bi-voltine (Rathore *et al.*, 2018):

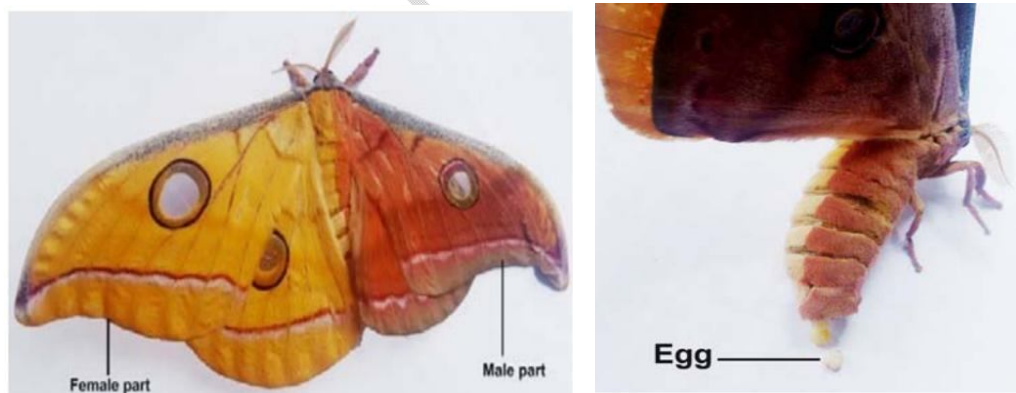


Fig 3: a. Female Gynandromorphic moth, **b.** Ovipositing female gynandromorph (Rathore *et al.*, 2018)

3.2. MUGA SILKWORM:

The scientific name of muga silkworm is *Antheraea assamensis*. It is a polyphagous insect. It is available in Assam. Till now, only one muga gynandromorph has been found in CMER&TI, Lahdoigarh, Assam (Rajkhowa *et al.*,2010).

● **Characters observed** (Rajkhowa *et al.*,2010):

1. Wings expanse: Male: 75mm, Female: 80mm
2. Colour: larger and darker.
3. Antenna: Quadripectinate
4. Male antenna dark brown, with their bases reddish pink, but female antenna is paler.
5. Abdomen: Chestnut brown.

Table 4: Characteristic comparison between normal & Gynandromorph muga moth (Rajkhowa *et al.*,2010):

CHARACTER	NORMAL MUGA	GYNANDROMORPHIC MUGA
Wing size	Larger in female and smaller in male	One side larger than other
Colour	Male: copper brown to dark brown Female: Yellowish light brown	One side darker than other
Antennae	Male antennae are darker than female	Male: dark brown Female: paler
Abdomen	Light to dark brown	Chestnut brown



Fig 4: Gynandromorphic muga moth (Rajkhowa *et al.*,2010)

4.3 GYNANDROMORPH in *Bombyx mori* (Obara and Tamazawa, 1982):

In 1982, some abnormal sexual behaviour of gynandromorph was found in Japan. There, 232 artificial gynandromorphs were created utilising the egg cooling process, where the eggs were placed in a freezer at 10⁰c for 24 hours following oviposition. This leads to unusual nuclear fusion and the formation of gynandromorphs. Out of 232, 32 gynandromorphs had uncommon bisexual behaviours. These unusual bisexual behaviour were categorised into four categories viz. **Dual personality** where 15 dual personality gynandromorphs displayed one sex's mating behaviour at one time and the other sex's behaviour at another time, **Intersexual personality** where Gynandromorphs displayed copulation and oviposition concurrently in the same body part, **Schizophrenics personality** in which, 22 schizophrenic moths have been found where simultaneously exhibited male and female behaviours in various body regions and lastly **Sequence- crossed personality**, where 3 sequence- crossed moth have been found which when the behaviour of the other sex (*i.e.*, male) would have typically been appropriate, they performed the inappropriate sexual behaviour (*i.e.*, female) in the context of one sex (*i.e.* male).

4.4 GYNANDROMORPH IN *Attacus atlas* (Lempke, 1981):

It is a largest moth in the world. It belongs to the family **Saturniidae**. In 1981, Balvers reported an *A. atlas* **Gynandromorphy** from Java.

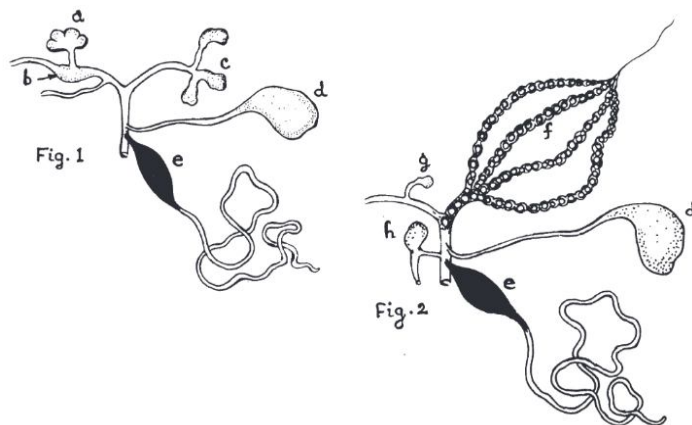
Characters observed:

1. Wing size: Larger in female side
2. Antennae: Narrow in female side
3. Colour: One side is slight lighter than other



But in Perak Malaysia, Peigler's (1989) investigation, thousands of *Attacus* genus specimens were studied in museums, but no **Gynandromorphy** were discovered. He initially believed it to be a **Gynandromorphy**, but proper magnification reveals that it was actually a male moth with female antennae owing to sexual mosaic (Peigler, 1993).

5. REPRODUCTIVE MORPHOLOGY OF GYNANDROMORPHIC TASAR MOTH (Chaudhuri *et al.*, 1992):



6. Conclusion:

Sericulture rarely encounters gynandromorphic situations. The same insect is shown to have both male and feminine characteristics. However, they will display differently. Some individuals may exhibit bilateral, anterior-posterior, or sex piebald features. Till now, gynandromorph has been clearly found in tassar moth, muga moth and *Attacus* moth. In case

of mulberry, gynandromorphic moths are produced artificially by egg cooling method to check the mating behaviour between the moths. Previously, gynandromorphic moth was thought to be infertile, but recent study has shown that gynandromorphs can also be female.

7. FUTURE ASPECTS:

There are plenty of scopes for future experiments/researches that can be done with Gynandromorphic individuals as in rearing behaviour of gynandromorphic moths, study on physiological behaviour on gynandromorphic insect, study on sex determination and breeding techniques of the gynandromorphic moths etc.

UNDER PEER REVIEW

Disclaimer (Artificial intelligence)

Option 1:

Author(s) hereby declare that NO generative AI technologies such as Large Language Models (ChatGPT, COPILOT, etc) and text-to-image generators have been used during writing or editing of manuscripts.

REFERENCES:

1. Ssemugenze, B.; Esimu, J.; Nagasha, J. and Masiga, W. C. Sericulture: agro-based industry for sustainable socio-economic development: a review. *International Journal of Scientific and Research Publications*. 2021; **11**(9):474-482
2. Czaplicki, Z.; Gliscinska, E. and Machnowski, W. Natural Silk-an Unusual Fibre: Origin, Processing and World Production. *Fibres and Textiles in Eastern Europe*. 2021; **29**(5):22-28
3. Joshua, P. J.; Lauren, K. L.; Joseph, S.W. and Matthew, L. F. Morphological Outcomes of Gynandromorphism in *Lycaeides* Butterflies (Lepidoptera: Lycaenidae). *J Insect Sci*. 2015; **15**(38):1-8
4. Rajkhowa, G.; Kumar, R. and Singh, R.K. Gynandromorphy in *Antheraea assamensis Helfer* (saturniidae: lepidoptera) from ladhdoigarh, Assam (India). *Mun. Ent. Zool*. 2010; **5**:1191-1193
5. Lempke, B. J. Interessante resultaten bij het opkweken van een aantal rupsen van *Attacus atlas* (Linnaeus) (Lep.: Saturniidae). *Ent. Ber.(Amsterdam)*. 1981; **41**:177-179
6. Obara, Y. and Tamazawa, S. A. Behavioural gynandromorph of *Bombyx mori*. *Physiological Entomology*. 1982; **7**:443-448
7. Peigler, R. S. False gynandromorph of *Attacus atlas* (Lepidoptera: Saturniidae). *Tropical Lepidoptera*. 1993; **4** (1): 47-48
8. Katsuma, S.; Kiuchi, T.; Kawamoto, M.; Fujimoto, T. and Sahara, K. Unique sex determination system in the silkworm, *Bombyx mori*: current status and beyond. *Proc Jpn Acad Ser B Phys Biol Sci*. 2018; **94**(5): 205–216

9. Butler, C. A. Gynandromorphism sexual forms are not necessarily either male or female. *Natural history magazine*. 2017.
10. Werner, E. A developmental network theory of gynandromorphs, sexual dimorphism and species formation. 2012; arXiv:1212.5439v1 [q-bio.MN]. 1-18
11. <https://www.biologydiscussion.com/genetics/gynandromorphs-meaning-types-and-occurrence/35533>.
12. Vishakha, G.V.; Rathore, M.S.; Chandrashekharaiyah, M.; Nadaf, H.A. and Sinha, R.B. Tasar for tribes: a way of life. *Journal of Entomology and Zoology Studies*. 2020; **8**(1): 374-377
13. Mala, N.; Jena, K. and Baig, M.M. Half male half female : A rare prodigy of Gynandromorphism in Tasar silkworm *Antheraea mylitta* D (Saturniidae:Lepidoptera) with special reference to its procreative behaviour. *Journal of Entomology and Zoology Studies*. 2021; **9**(6): 97-102
14. Rathore, M. S.; Chandrashekharaiyah, M. C.; Singhal, B. K. and Sahay, A. Female gynandromorphy – a rare biological event in DABA bi-voltine *Antheraea mylitta* D. Ecorace. *Current science*. 2018; **7**: 1235-1236
15. Chaudhuri, A.; Chakraborty, D. and Sinha, A. K. A report on the reproductive morphology of gynanders tasar silk moths *Antheraea mylitta* Drury (Lepidoptera: Saturniidae). *Journal of Research on the Lepidoptera*. 1992; **31**(3-4): 287-292
16. Rajkumar A. J.; Subrahmanyam B. & Ramamurthy V. V. Gynandromorph of *Helicoverpa armigera* [Lepidoptera: Noctuidae]. *Entomological News*. 1998; **109**: 288–292
17. Bernardino, A. S.; Zanuncio T. V., Zanuncio J. C.; Lima E. R. & Serrao J. E. Note on gynandromorphism in the eucalyptus defoliator *Thyriniteina arnobia* (Stoll, 1782) (Lepidoptera: Geometridae). *Anais da Academia Brasileira de Ciências*. 2007; **79**: 235–237
18. Craig, D. A. & Crosby T. K. Gynandromorphs of New Zealand *Austrosimulium* spp. (Diptera: Simuliidae). *Zootaxa*. 2008; **18**(11): 57–68
19. Nihei S. S. & Carvalho C. J. B. Occurrence of gynandromorphism in *Polietina orbitalis* (Stein, 1904)(Diptera: Muscidae: Muscinae). *Studia Dipterologica*. 2002; **9**: 73–81
20. Morgan T. H. & Bridges C. B. The origin of gynandromorphs. 1919;; Pp. 1–122. In: BRIDGES C. B., MOR-GAN T. H. & STURTEVANT A. H. (eds.): Contributions to

- the genetics of *Drosophila melanogaster*. Carnegie Institution of Washington, Washington, 388 pp.
21. Morgan T. H. The cause of gynandromorphism in insects. *American Naturalist*. 1907; 41: 715–718
 22. Cockayne E. A. The origin of gynandromorphs in the Lepidoptera from binucleate ova. *Transactions of the Royal Entomological Society of London*. 1935; 83: 509–531.
 23. Allen C. E., Zwaan B. J. & Brakefield P. M. Evolution of sexual dimorphism in the Lepidoptera. *Annual Review of Entomology*. 2011; 56: 445–464
 24. Werren , J. H. and Beukeboom, L. W. Sex determination, sex ratios, and genetic conflict . *Annual Review of Ecology and Systematics*. 1998; **29** : 233 – 261
 25. Heimpel , G. E. and de Boer, J. G. Sex determination in the hymenoptera. *Annual Review of Entomology*. 2008; **53** : 209 – 230
 26. Narita, S.; Pereira, R. A. S.; Kjellberg, F. and Kageyama, D. Gynandromorphs and intersexes: potential to understand the mechanism of sex determination in arthropods. *Terrestrial Arthropod Reviews*. 2010; **3**: 63–96
 27. Fein, Z. E.; Roush, R. T. and Hunter, M. S. Male production by antibiotic treatment in *Encarsia formosa* (Hymenoptera: Aphelinidae), in asexual species. *Experientia*. 1992; **48**: 173 - 178
 28. Hollingsworth, M. J. A gynandromorph segregating for autosomal mutants in *Drosophila subobscura*. *Journal of Genetics*. 1955; **53** : 131 - 135
 29. Goldschmidt, R. and Katsuki, K. Erheblicher Gynandromorphismus und somatische Mosaikbildung bei *Bombyx mori* L. *Biologisches Zentralblatt*. 1927; **47**: 45 - 54 .