

# STRATEGIES FOR IMPROVING RESILIENCE TO ABIOTIC STRESSES IN SUMMER GROUNDNUT

Commented [i1]: Against

## Abstract

Significant improvement in growth, yield, physiological traits, water use efficiency and economic aspects of summer groundnut cultivation on medium black calcareous clayey soil was observed due to appropriate irrigation, residue mulching and the foliar application of stress-reducing chemicals. A study was conducted during the summer of 2022 and 2023 at the Instructional farm of Junagadh Agricultural University, India, to assess various irrigation techniques (drip and surface irrigation), residue mulching and stress-mitigating chemicals (salicylic acid, potassium nitrate, and kaolin) in combating environmental stress on summer groundnut. The results showed that using drip irrigation at 0.8 PEF resulted in improved growth, yield, physiological traits, water use efficiency and economics of summer groundnut. Residue mulching was also discovered to be effective in decreasing soil water loss. The mulch rate of 5 t ha<sup>-1</sup> was determined to be the most effective for growth, yield, physiological traits, water use efficiency and economics. Different chemical compounds for reducing stress also had a significant impact on these factors. During this study, combining drip irrigation at 0.8 PEF, mulching with 5 t ha<sup>-1</sup> of residue and applying salicylic acid (foliar) at 100 ppm during 45 and 60 days after sowing enhanced the growth, yield and physiological traits, water use efficiency and economics of summer groundnut in areas with limited irrigation.

Commented [i2]: Delete

Commented [i3]: The findings indicated that the implementation of drip irrigation at a

Commented [i4]: led to enhanced

Commented [i5]: Additionally, it was found that residue mulching significantly contributed to the reduction of

**Key words:** Abiotic stress, Irrigation, Residue mulching, Stress mitigation chemicals, Summer

Commented [i6]: Delete

## Introduction

Abiotic stresses exert a pivotal influence on the productivity, sustainability and resilience of Indian agriculture, with diverse agro-climatic zones making the country susceptible to a range of challenges. From droughts and erratic rainfall to extreme temperatures and soil-related issues, these stresses significantly impact crop yields, threatening food security. Climate change-induced stresses can result in a drastic reduction of up to 70% crop yield, while edaphic stresses like nutrient deficiencies and salinity further compound challenges in crop production.

Commented [i7]: play a crucial role in determining

Peanut is a significant oilseed crop that contains 44-56% oil and 22-30% protein when measured on a dry seed basis. Groundnut plants have developed different physiological characteristics to endure harsh conditions in order to cope with the adverse effects of abiotic stress. Research findings show that using different irrigation techniques, residue mulching and stress mitigation chemicals can greatly improve crop growth, yield, physiological traits and water use efficiency in summer groundnut while managing abiotic stress.

Commented [i8]: Peanut serves as an important oilseed crop, comprising 44-56% oil and 22-30% protein based on a dry seed analysis.

Commented [i9]: indicates that the application of diverse irrigation methods,

Studies show that drip irrigation significantly enhances pod and haulm yield, water and fertilizer savings, and net returns compared to traditional surface irrigation methods (Vaghasia *et al.* 2023). Mulching, particularly with crop residue, positively impacts yield attributes and economic returns by conserving soil moisture and improving nutrient uptake (Maurya *et al.* 2024). Stress mitigating chemicals such as Salicylic acid, potassium nitrate

and kaoline enhance physiological parameters like relative water content, photosynthetic rate, and membrane stability index under stress conditions, providing effective solutions for managing water stress in groundnut (Menpadi, 2017).

This study investigates the management of abiotic stress in summer groundnut cultivation. It analyses stressors, including temperature extremes and moisture deficit. The research aims to understand the impacts of these stressors on growth, yield, physiological traits, water use efficiency and economics. It also explores resilient strategies, such as irrigation management techniques combined with mulching practices and foliar application of stress mitigation chemicals. The findings could contribute to sustainable agricultural practices for enhancing productivity and resilience profitability under abiotic stress conditions.

**Commented [i10]:** the cultivation of summer groundnuts. It evaluates various stress factors, such as extreme temperatures and insufficient moisture. The objective of the study is to comprehend

**Commented [i11]:** Additionally, it investigates adaptive

## METHODOLOGY

### Site characterization

Field trials were conducted in medium black clay soil under irrigated conditions at the Instructional farm of the Junagadh Agricultural University, in summer 2022 and 2023. South Saurashtra Agro-climatic region of Gujarat state has a tropical wet and dry climate, with three distinct seasons observed, a mild winter sets in the month of November and continues till the month of February. December and January are the coldest month of winter. Summer season commences during the second fortnight of February and ends by middle of June and a monsoon from July to October. Junagadh faces adverse climatic conditions in the summer months with the temperature ranging from 28 °C to 38 °C. April and May are the hottest months of summer. In the winter months, the temperature ranges from 10 °C to 25 °C. Various factors such as its close proximity to the sea influence the weather of Junagadh. The latent winds from the sea affect the climatic conditions in the region Chinchorkar *et al.* (2022).

The soil is classified as Vertic Ustochrept, medium black, clayey, shallow (15-20 cm depth) and highly calcareous in nature (pH 7.9). The soil contains moderate available nitrogen (257 kg ha<sup>-1</sup>), medium available phosphorus (37.68 kg ha<sup>-1</sup>) and high in available potassium (276.8 kg ha<sup>-1</sup>), EC 0.41 dS m<sup>-1</sup>, medium organic carbon (0.58%) with soil pH of 8.1. The bulk density of the experimental soil were 1.33 g cm<sup>-3</sup>. Field capacity and permanent wilting point were around 27.63 to 28.37% and 13.39 to 14.21% gravimetric water contents, respectively.

**Commented [i12]:** It is prefer to covert in to table

### Crop management

The variety of summer groundnut used in this study was Gujarat Junagadh Groundnut-31. The crop was sown on 15<sup>th</sup> and 10<sup>th</sup> February in 2022 and 2023, respectively. Seed rate and spacing of growing the crop were 120 kg ha<sup>-1</sup> and 30 cm \* 10 cm.

Gap filling operation was done during 12-15 DAS in each row to maintain proper plant to plant spacing of 10 cm. The total amount of fertilizers were applied at the time of sowing. For effective weed management, pre-emergence application of Pendimethalin at 1.0 kg a.i. ha<sup>-1</sup> was used. Two common irrigation was applied for uniform germination. After proper germination drip installation and residue mulching treatment was applied in respected plot. Threshing of the crop was done on 19<sup>th</sup> June, 2022 and 16<sup>th</sup> June, 2023. Respectively.

**Commented [i13]:** The gap filling operation was conducted between 12 to 15 days after sowing (DAS) in each row to ensure an appropriate plant-to-plant spacing of 10 cm.

### Treatment

The experiment was laid out in a split split plot design having three replications. Main plot comprised of three of irrigation methods and scheduling on the basis of IW/CPE ratio and PEF *viz.* surface irrigation at 1.0 IW/ CPE and drip irrigation at 0.6 and 0.8 PEF, different mulching *i.e.* residue mulch 5 t ha<sup>-1</sup> and no mulch were taken at sub-plots. While different stress mitigation chemicals foliar application at 45 and 60 DAS *viz.* Control, Salicylic acid at spray @ 100 ppm, Potassium nitrate spray @ 2% and Kaolin spray @ 6% were taken at sub sub-plots treatments. Thus, the experiment was comprised of total 24 treatment combinations.

**Table 1. Evaluation of hydraulic performance of drip irrigation system**

Variation	First lateral	Middle lateral	Last lateral	Average
Maximum Discharge (lph)	3.48	3.52	3.46	3.49
Minimum Discharge (lph)	2.98	3.17	3.00	3.05
Average of Discharge (lph)	3.23	3.35	3.23	3.27
Average of 1/4 the lowest emitter discharge (lph)	3.14	3.22	3.14	3.17
Standard deviation (SD)	0.14	0.10	0.13	0.12
Coefficient of variation (Q <sub>var</sub> )	0.04	0.03	0.04	0.04
Uniformity coefficient (%)	95.67	97.01	95.98	96.22
Distribution Uniformity (%)	97.21	96.26	97.21	96.90
Emission Uniformity (%)	98.04	94.67	98.04	96.92

Performance of drip irrigation was evaluated based on the uniformity coefficient, distribution uniformity and emission uniformity by measuring the discharge from first, middle and end laterals for 5 minutes and then converted into the lph. The hydraulic performance of drip system is as summarized in table 1. The system was made to run at fixed pressure (1 kg cm<sup>-2</sup>) throughout the period of experiment. The maximum discharge observed as 3.52, 3.48 and 3.46 lph at starting point of the lateral in middle, first and last lateral respectively. Minimum discharge was occurred at first lateral then followed by last and middle lateral respectively. The average discharge of first, middle and last lateral was 3.33, 3.35 and 3.31 respectively, with overall average discharge of system was 3.33 lph which was 83.33 % of manufacturer discharge (4 lph). As such this is considered as a good discharge.

Commented [114]: Transfer to results paragraph with table

A common irrigation was applied at sowing and 7 DAS to ensure proper germination as well as establishment of the crop irrespective of cumulative pan evaporation readings. Afterward, irrigations were given as per irrigation treatment. This is a climatological approach of scheduling irrigation. In this approach a known amount of irrigation water (IW) is applied when cumulative pan evaporation CPE reaches a predetermined level. Pan evaporation denoted the water loss because of evaporation from an open pan evaporimeter. The total amount of irrigation water (IW) was applied in each irrigation was 50 mm per irrigation during both the years. Therefore, the cumulative pan evaporation value was 50 mm at 1.0 IW/CPE ratio. Irrigation frequency was varied at same level of IW/CPE ratio due to variation in rainfall in crop duration. While in drip irrigation alternate day irrigation was given at different pan evaporation fraction. Sowing of seeds in plot was done in 9 rows having spacing of 30 cm row-row and 10 cm plant-plant. Crop residue at 5000 kg ha<sup>-1</sup> was applied under mulching treatment after both common irrigation and drip installation, while, under no-mulch no crop residue was applied. Mulch was uniformly spread in between the rows of crop. Application of different stress mitigation chemicals was given at 45 DAS and 60 DAS via foliar spray.

### Growth parameters

Plant height, number of branches and dry matter production at harvest by selecting random 5 plant sample per plot and mean data were analysis.

Commented [i15]: Delete

### Yield

Various yield attributes like number and weight of pod per plant as well as yield like pod, haulm and kernel yield were recorded per plot.

Commented [i16]: Delete

### Physiological traits

The SPAD meter value was measured at 60, 90 DAS and at harvest by using the chlorophyll meter (Minolta SPAD-502) by taking observations from 4-5 upper leaves of five tagged plants and averaged for best result. The values were recorded as SPAD values. Relative water content (RWC) was assessed according to Barrs and Weatherly (1962) method with the following formula,

Commented [i17]: The SPAD meter readings were obtained at 60 and 90 days after sowing (DAS) as well as at the time of harvest, utilizing the chlorophyll meter (Minolta SPAD-502). Observations were taken from 4 to 5 upper leaves of five designated plants, and the results were averaged to ensure accuracy. These measurements were documented as SPAD values.

$$\text{Relative water content (\%)} = \frac{\text{Fresh weight (g)} - \text{Dry weight (g)}}{\text{Turgid weight (g)} - \text{Dry weight (g)}} \times 100$$

Membrane stability index (MSI) was calculated by taking the electrical conductivity of leaf leachates in double distilled water at 40 and 100°C by following the method of Sairam (1994).

$$\text{Membrane stability index (MSI)} = \left(1 - \frac{C_1}{C_2}\right) \times 100$$

Mature leaf was cut into small pieces and then taken (0.5 g) in test tubes having 10 ml. of double distilled water in two sets. One set was kept at 40°C for 30 min and another set at 100°C in boiling water bath for 15 min and their respective electric conductivity's  $C_1$  and  $C_2$  were measured by conductivity meter.

### Water Use Efficiency (kg/ha mm)

The response of pod yield per unit of irrigation water applied at varying levels of irrigation was worked out by dividing per hectare pod yield of groundnut crop obtained under various treatments with the total quantity of irrigation water applied (mm) which was worked out by the following formula.?

Commented [i18]: Maintain the reference

$$\text{WUE (Kg ha}^{-1}\text{mm}^{-1}\text{)} = \frac{\text{Pod yield (Kg ha}^{-1}\text{)}}{\text{Water applied (mm)}}$$

### Data analysis

Standard analysis of variance was used to do the statistical analysis of the data (Cochran and Cox (1957), Gomez and Gomez, 1984). The F-test was used to assess the treatment effects' significance. Using the least significant difference (LSD) at the 5% probability level, the significance of the difference between the means of the different treatments was examined.

Commented [i19]: This references its old

### Economic analysis

The yield and cost-effectiveness of irrigation, residue mulching and stress mitigation chemicals were evaluated to determine whether to add more groundnut production. Utilizing crop yield and produce market price, net realization return and benefit cost ratio were computed to compare the economics.

Commented [i20]: Put before the data analysis

Commented [i21]: The assessment of the yield and cost-effectiveness of irrigation, residue mulching, and stress mitigation chemicals was conducted to ascertain the feasibility of increasing groundnut production. By analyzing crop yield and market prices, net realization returns and benefit-cost ratios were calculated to evaluate the economic viability.

## RESULTS AND DISCUSSION

The analysis of variance (ANOVA) for different parameters tested in this experiment exhibited that the main effects of various irrigation, residue mulching and stress mitigation chemicals were significant for almost all the parameters like growth, yield, physiological traits, water use efficiency and economics *etc.* during both the years of experiment (Table 2, 3 & 4). The interaction effects between irrigation with residue mulch (I\*M), Irrigation with stress mitigation chemicals (I\*S), residue mulching combined with stress mitigation chemicals (M\*S) and irrigation, residue mulching and stress mitigation chemicals (I\*M\*S) were significant during both the years of study as well as pooled results (Fig 1&2).

Drip irrigation at 0.8 PEF recorded significantly highest growth parameters, yield attribute and yield compared to surface irrigation at 1.0 IW/CPE. This may be due to irrigation at 0.8 PEF proved adequate to grow the plant under moisture stress free condition that helped in better cell division and cell expansion of plant and finally resulted in better plant. When the plant is grown under constantly replenished appreciable soil moisture, it tends to grow at its genetic potential while extending out plant height, number of branches and dry matter production for active photosynthesis. The results completely collaborated with the results reported by Suresh *et al.* (2013), Ranjitha *et al.* (2018) and Chandini *et al.* (2022). Higher number of pods per plant with precise irrigation by drip irrigation at 0.8 PFE (I<sub>3</sub>) could be due to the occurrence of sufficient available soil moisture condition in the root zone during the crop growth period and higher uptake of nutrients under this treatment might have produced and converted more photosynthates into numerous metabolites needed for such yield attributes. Sufficient moisture at required frequency with required quantity at reproductive stage improve the pegging and also make favourable soil environment for pod development, thereby increasing number of pods per plant. While in surface irrigation treatment loss of water is more and plant experience the abiotic stress at reproductive stage. So, decrease pegging as well as number of pods per plant. These results are in conformity with the findings of those reported by Mathukia *et al.* (2019), Maurya *et al.* (2019), Eman *et al.* (2022) and Harini *et al.* (2022). In the present study all growth and yield attributes were positively and highly correlated with the pod and haulm yield of groundnut. These observations are in conformity with those reported by Kamble *et al.* (2017), Londhe *et al.* (2017), Jain *et al.* (2018), Swetha and Bhunia (2019), Chandrasekaran *et al.* (2020), Kaur *et al.* (2020), Ramanjaneyulu *et al.* (2021), Solanke *et al.* (2021), Kumar *et al.* (2022), Metin *et al.* (2023) and Vaghasiya *et al.* (2023).

**Table 2. Effect of resilient strategies on growth parameters, yield attribute and yield of summer groundnut**

Treatment	Plant height (cm)	Number of branches	Dry matter production (g plant <sup>-1</sup> )	Number of pod per plant	Pod yield (q ha <sup>-1</sup> )	Haulm yield (q ha <sup>-1</sup> )
<b>Irrigation (I)</b>						
I <sub>1</sub>	20.07	4.13	25.44	10.13	31.00	46.30
I <sub>2</sub>	23.33	4.65	26.66	10.68	32.64	48.39
I <sub>3</sub>	26.92	5.31	32.40	13.40	40.73	59.74
SEM	0.38	0.06	0.45	0.17	0.51	0.90
CD 5%	1.25	0.20	1.47	0.56	1.67	2.94
CV %	11.32	9.14	11.10	10.51	10.18	12.11
<b>Residue Mulch (M)</b>						

**Commented [i22]:** I read the results are not clear and messy. It is better to put the table and then explain it directly and also a very long discussion. There is no need to mention this number of sources. Rewriting the results

**Commented [i23]:** It is prefer to transfer the fig. after this paragraph

**Commented [i24]:** Its prefer to choose three modern references

<b>M<sub>0</sub></b>		22.39	4.46	26.72	10.78	32.95	48.83
<b>M<sub>1</sub></b>		24.49	4.94	29.62	12.02	36.63	54.12
<b>SEM</b>		0.26	0.05	0.32	0.13	0.38	0.60
<b>CD 5%</b>		0.79	0.14	0.99	0.40	1.17	1.86
<b>CV %</b>		9.25	8.24	9.66	9.57	9.25	9.96
<b>Stress Mitigation chemicals (S)</b>							
<b>S<sub>0</sub></b>		21.44	4.31	26.17	10.48	32.07	47.68
<b>S<sub>1</sub></b>		24.83	5.04	29.56	12.05	36.71	54.13
<b>S<sub>2</sub></b>		23.07	4.78	28.72	11.62	35.44	52.46
<b>S<sub>3</sub></b>		24.42	4.66	28.23	11.45	34.95	51.64
<b>SEM</b>		0.32	0.06	0.37	0.16	0.46	0.68
<b>CD 5%</b>		0.90	0.17	1.04	0.44	1.29	1.93
<b>CV %</b>		8.20	7.49	7.88	8.17	7.90	7.97
<b>I X M</b>	<b>SEM</b>	0.44	0.08	0.56	0.22	0.66	1.05
	<b>CD 5%</b>	1.36	0.24	1.71	0.69	2.02	3.22
<b>I X S</b>	<b>SEM</b>	0.56	0.10	0.64	0.27	0.79	1.18
	<b>CD 5%</b>	1.56	0.29	1.81	0.76	2.24	3.34
<b>M X S</b>	<b>SEM</b>	0.45	0.08	0.52	0.22	0.65	0.97
	<b>CD 5%</b>	1.28	0.23	1.47	0.62	1.83	2.73
<b>I X M X S</b>	<b>SEM</b>	0.78	0.14	0.91	0.38	1.12	1.68
	<b>CD 5%</b>	2.21	0.40	2.55	1.07	3.16	4.72
<b>Y</b>	<b>SEM</b>	0.31	0.05	0.37	0.14	0.42	0.73
	<b>CD 5%</b>	NS	NS	NS	NS	NS	NS

While residue mulch @ 5 tha<sup>-1</sup> recorded significant effect on summer groundnut. Probably due to better soil moisture conservation and temperature regulation provided by the mulch, this trend was sustained at harvest, where mulched plants logged greater growth parameters. This attests to a long-term positive effect of mulch on plant vigour and general resilience to such abiotic stresses as moisture deficit and extremes in temperature. This might be because of more moisture availability to the plants throughout its growth period and thus increase in physiological and metabolic processes within plants, providing a growth environment that improved cell elongation, cell turgidity, opening of stomata and finally the partitioning of photosynthetic efficiently to the sink. This may have relatively more water stress at the critical stage of water requirement, as reflected in a decline in the plant growth parameters without mulch. Similar results have been reported by Sounda *et al.* (2006), Mathukia *et al.* (2014), Taufiq *et al.* (2017), Jain *et al.* (2018) and Kaur *et al.* (2020). Maximum yield attribute and yield per plant under residue mulch was mainly because this could be ascribed to the fact that moisture availability in the root zone increases the nutrient uptake which triggered the enhanced physiological effects which lead into increase in net assimilation followed by higher translocation of photosynthates from source to sink. Using crop residue mulch helps retain soil moisture by minimizing evaporation, which is particularly important in the hot summer months. These findings are in agreement with earlier reports of Ghosh *et al.* (2006), Mathukia *et al.* (2014), Ravisankar *et al.* (2014), Zayton *et al.* (2014), Patro and Ray (2016), Sarkar and Sarkar (2017), Jain *et al.* (2018), Maurya *et al.* (2019), Bhattarai *et al.* (2023) and Chaudhary *et al.* (2024).

Among Different stress mitigation chemicals salicylic acid @ 100 ppm at 45 and 60 DAS recorded significantly higher results and potassium nitrate @ 2 % and kaolin @ 6 %

Commented [125]: In her also

Commented [126]: In her also choose modern references

recorded comparable results to salicylic acid treatment in plant height, number of branches, dry matter production, number of pods per plant, pod yield and haulm yield of summer groundnut. Salicylic acid enhances photosynthesis and reduces oxidative damage, leading to increased plant height, dry matter production and crop growth rates by promoting cell division, elongation and metabolic activity. Potassium nitrate provides essential potassium and nitrogen, crucial for vegetative growth, resulting in increased plant height, more branches and higher dry matter accumulation due to better nutrient status and root development. Kaolin mitigates heat stress and conserves water by reflecting excess sunlight and reducing leaf temperature, thus maintaining turgor pressure and enhancing overall growth. Consequently, stress mitigation chemicals improved plant height and branching, with sustained dry matter production and growth rates even under suboptimal conditions. These findings are in conformity with those reported by Karimian *et al.* (2015) in green gram, Nezhad *et al.* (2014) and Nkrumah *et al.* (2021) in groundnut, Meenakshi and Prakash (2013) in soybean, Muthulakshmi and Lingakumar (2017) in pea and Singh *et al.* (2023) in coriander. Salicylic acid is known to enhance plant growth and productivity under stress by inducing systemic acquired resistance and activating defense-related enzymes. This leads to better stress tolerance and improved reproductive growth, resulting in a higher number of yield attribute and yield as compared to control. Salicylic acid likely improved the plant's ability to cope with abiotic stress conditions. Potassium nitrite and kaolin, though beneficial, operate differently. Potassium nitrite provides nutrient support and may improve stress resilience to some extent but is less effective than salicylic acid in enhancing reproductive traits. Kaolin acts as a physical barrier, reflecting sunlight and reducing heat stress, but does less directly influence internal physiological pathways as salicylic acid does. The efficacy of potassium nitrate spray @ 2% and kaolin spray @ 6%, which produced comparable results in individual years, suggests their role in mitigating stress through mechanisms like reduced transpiration and improved nutrient uptake, respectively. Consequently, the highest yield attributes observed with salicylic acid application is due to its ability to trigger internal defence mechanisms and improve overall plant health more effectively than potassium nitrite and kaolin. These findings are in conformity with those reported by Meena *et al.* (2017) in clusterbean, Thombare *et al.* (2017) and Nkrumah *et al.* (2021) in groundnut, Singh *et al.* (2023) in coriander and Raviteja *et al.* (2024) in maize.

Commented [i27]: In her also

The results from the present investigation clearly indicated that physiological traits *viz.*, SPAD meter reading, relative water content and membrane stability index as well as water use efficiency of summer groundnut were significantly influenced by irrigation with residue mulch and stress mitigation chemicals during cropping period compared (Table 2).

Commented [i28]: ?

Drip irrigation significantly affects physiological traits and water use efficiency. The more frequent and precise water application through drip irrigation can maintain better soil moisture conditions, which is crucial for optimal photosynthetic activity and chlorophyll development in groundnut leaves. Uniform distribution of water and nutrients through drip irrigation can result in more homogeneous crop growth and development, leading to consistent SPAD readings across the field compared to surface irrigation. Drip irrigation can help mitigate abiotic stresses like water deficit, which can negatively impact leaf chlorophyll levels. The improved water management under drip can enhance the resilience of the groundnut crop. Drip irrigation preserves higher RWC levels vital for plant health and resilience to abiotic stresses, establishing it as a superior strategy for enhancing crop

resilience. Membrane Stability Index (MSI) assesses a plant's ability to withstand stress, with a higher MSI indicating healthier, more resilient plants. Drip irrigation targets water directly to the roots, ensuring consistent moisture and minimal waste, while surface irrigation inundates the soil, causing uneven water distribution and potentially waterlogged conditions. The benefits of drip irrigation encompass improved water use efficiency, soil moisture conditions, temperature consistency, salt control and nutrient accessibility. These results are in accordance with the findings of Yong-qiang *et al.* (2015), Soni *et al.* (2017), Pawar *et al.* (2018), Chomsang *et al.* (2021), Singh and Singh (2021) and Dong *et al.* (2023). Higher WUE under 0.6 PEF (I<sub>2</sub>) might be due to less quantity of irrigation water application. Higher yield under 0.8 PEF (I<sub>3</sub>) due to increase in moisture regimes increased the production of pod in proportion of consumptive use of water. Similar effect of irrigation on consumptive use of water and water use efficiency were observed by Rathore *et al.* (2018), Ranjitha *et al.* (2018), Mathukia *et al.* (2019), Kaur *et al.* (2020), Ramanjaneyulu *et al.* (2021), Harini *et al.* (2022) and Kumar *et al.* (2022).

Commented [i29]: ?

Commented [i30]: In all study choose modern references

The presence of mulch helps conserve soil moisture by reducing evaporation, which in turn maintains higher relative water content and SPAD meter reading in the plant leaves. Additionally, mulch insulates the soil, moderating temperature fluctuations and preventing excessive heating, which can damage cell membranes and improve the membrane stability index. The findings of Kannan *et al.* (2017), Singh *et al.* (2017), Chaithra and Sridhara (2018), Pradhan *et al.* (2018) and Das *et al.* (2019) are in agreement with these results. The increase in water use efficiency might be due to the greater pod yield due to application of residue mulch have minimum or moderate consumptive use of water and higher pod yield found. These findings are in conformity with those reported by Kadu *et al.* (2014), Jain *et al.* (2018), Maurya *et al.* (2017), Das *et al.* (2019) and Minh *et al.* (2023).

The results presented in the table 3 indicate that the application of stress alleviation chemicals, particularly salicylic acid @ 100 ppm and kaolin @ 6%, significantly improved leaf SPAD meter reading, relative water content and membrane stability index in summer groundnut at 90 DAS and at harvest compared to the control treatment of water spray. Specifically, Salicylic acid recorded the highest physiological traits at 90 DAS and at harvest across both years and in the pooled analysis. These findings suggest that salicylic acid and kaolin effectively mitigated abiotic stresses, likely by enhancing photosynthetic efficiency and leaf chlorophyll content, thereby improving the overall resilience of summer groundnut to environmental stresses. The lower physiological traits observed under the water spray treatment indicate reduced physiological traits compared to the stress alleviation chemicals. This suggests that water spray was not effective in mitigating abiotic stresses in summer groundnut, while salicylic acid and kaolin helped maintain higher chlorophyll levels and photosynthetic efficiency throughout the crop growth stages. The results support the potential of salicylic acid and kaolin as stress-alleviating agents to enhance the tolerance of groundnut to abiotic stresses. These findings are in conformity with those reported by Kong *et al.* (2015), Lakhran *et al.* (2021), Khavari *et al.* (2021), Meena *et al.* (2023) and Elshamly *et al.* (2024).

**Table 3. Effect of resilient strategies on physiological traits and water use efficiency of summer groundnut**

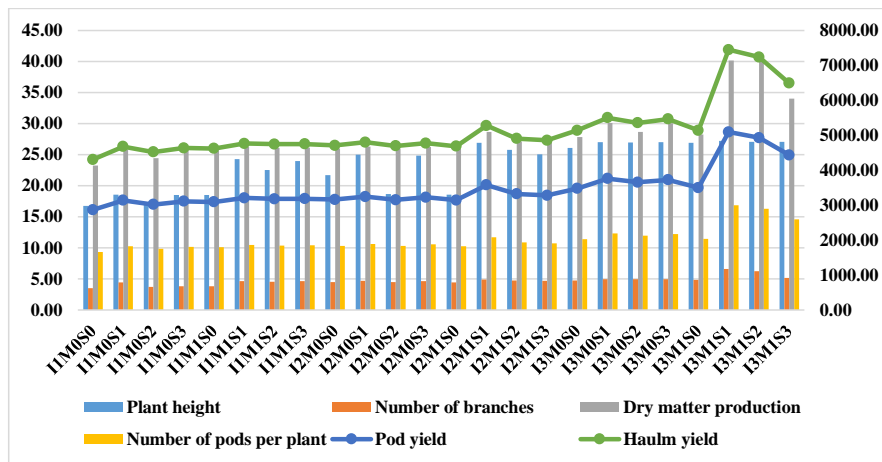
Treatment	SPAD meter value		RWC (%)		MSI		WUE (kg ha <sup>-1</sup> mm <sup>-1</sup> )
	90 DAS	At harvest	90 DAS	At harvest	90 DAS	At harvest	
<b>Irrigation (I)</b>							
<b>I<sub>1</sub></b>	33.14	34.87	66.15	68.15	68.85	61.16	3.42
<b>I<sub>2</sub></b>	39.02	41.62	77.25	78.82	81.12	72.36	5.59
<b>I<sub>3</sub></b>	43.06	45.93	85.45	86.70	89.61	82.53	5.47
<b>SEM</b>	0.66	0.67	1.18	1.13	1.30	1.16	0.06

<b>CD 5%</b>	2.15	2.20	3.85	3.70	4.23	3.78	0.20	
<b>CV %</b>	11.88	11.45	10.73	10.10	11.25	11.14	8.94	
<b>Residue Mulch (M)</b>								
<b>M<sub>0</sub></b>	36.68	38.87	72.87	74.61	76.26	68.31	4.58	
<b>M<sub>1</sub></b>	40.13	42.74	79.70	81.17	83.46	75.72	5.08	
<b>SEM</b>	0.40	0.50	0.80	0.77	0.89	0.77	0.06	
<b>CD 5%</b>	1.24	1.54	2.48	2.38	2.75	2.36	0.17	
<b>CV %</b>	8.87	10.37	8.95	8.42	9.48	9.03	9.90	
<b>Stress Mitigation chemicals (S)</b>								
<b>S<sub>0</sub></b>	35.15	37.06	69.96	71.81	73.08	65.95	4.46	
<b>S<sub>1</sub></b>	40.89	43.60	81.17	82.59	85.12	77.14	5.10	
<b>S<sub>2</sub></b>	37.53	39.73	74.60	76.27	78.01	70.48	4.91	
<b>S<sub>3</sub></b>	40.06	42.82	79.40	80.89	83.24	74.50	4.84	
<b>SEM</b>	0.48	0.56	0.98	0.94	1.01	0.91	0.07	
<b>CD 5%</b>	1.36	1.59	2.76	2.65	2.84	2.56	0.19	
<b>CV %</b>	7.51	8.28	7.70	7.25	7.57	7.57	8.21	
<b>I X M</b>	<b>SEM</b>	0.70	0.86	1.39	1.34	1.55	1.33	0.10
	<b>CD 5%</b>	2.14	2.66	4.29	4.13	4.76	4.09	0.30
<b>I X S</b>	<b>SEM</b>	0.83	0.98	1.70	1.63	1.74	1.57	0.11
	<b>CD 5%</b>	2.35	2.75	4.78	4.60	4.92	4.43	0.32
<b>M X S</b>	<b>SEM</b>	0.68	0.80	1.38	1.33	1.42	1.28	0.09
	<b>CD 5%</b>	1.92	2.25	3.90	3.75	4.01	3.62	0.26
<b>I X M X S</b>	<b>SEM</b>	1.18	1.38	2.40	2.31	2.47	2.22	0.16
	<b>CD 5%</b>	3.32	3.89	6.76	6.50	6.95	6.27	0.46
<b>Y</b>	<b>SEM</b>	0.54	0.55	0.96	0.93	1.06	0.95	0.05
	<b>CD 5%</b>	NS	NS	NS	NS	NS	NS	NS

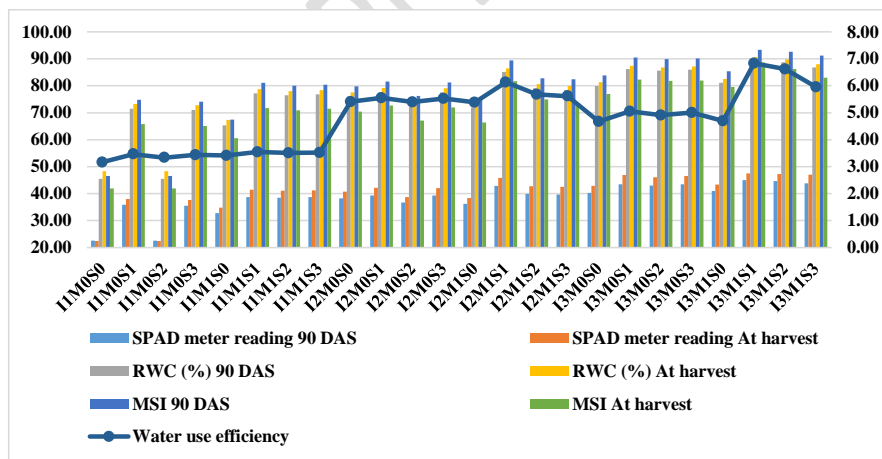
The maximum WUE was observed with the application of salicylic acid @ 100 ppm at 45 and 60 DAS, achieving values of 4.78, 5.41, and 5.10 kg ha<sup>-1</sup> mm<sup>-1</sup> for the years 2022, 2023 and pooled data, respectively. This improvement can be attributed to salicylic acid's role in enhancing plant stress tolerance by modulating physiological processes such as stomatal regulation and antioxidant activity, thereby improving water retention and utilization. Similarly, potassium nitrate @ 2% applied at the same intervals showed statistically comparable results, likely due to its beneficial effects on osmotic adjustment and nutrient uptake, which support better water use under stress. Kaolin spray at 6% also demonstrated significant efficacy by reducing leaf temperature and evapotranspiration, thus conserving soil moisture. In contrast, the lowest WUE was recorded with water spray, underscoring the lack of any protective effect against stress. These findings indicate that treatments with salicylic acid and potassium nitrate are particularly effective in improving WUE. These findings are in conformity with those reported by Krishna *et al.* (2018) and Alotaibi *et al.* (2023).

The prominent I x M x S interaction indicated that the concurrent application of these treatments drip irrigation at 0.8 PEF, residue mulch at 5 t ha<sup>-1</sup> and salicylic acid spray at 100 ppm resulted in superior outcomes, fostering environments that promoted heightened plant growth beyond the efficacy of individual treatments. This pattern of increased number of pods per plant and yield by improving the physiological traits and water use efficiency persisted consistently across both years and in the pooled data, underscoring the effectiveness of the integrated approach. The combination of these treatments creates a synergistic effect that optimizes multiple aspects of the plant's growing environment simultaneously. Drip

irrigation ensures consistent water supply, mulch improves soil health and moisture retention and salicylic acid boosts the plant's stress tolerance and immune responses. This integrated approach results in a more stable and conducive environment for plant growth, leading to a higher yield.



**Figure 1. Interaction effect of resilient strategies on plant height, number of branches per plant, dry matter production, number of pods per plant, pod and haulm yield of summer groundnut (pooled)**



**Figure 2. Interaction effect of resilient strategies on physiological traits at 90 DAS & harvest and water use efficiency of summer groundnut (pooled)**

This comprehensive approach highlights the scientific rationale behind leveraging interactions among irrigation, mulching and stress mitigation chemicals to achieve sustained and improved crop productivity in agro-ecological contexts like the saurashtra region. These

findings are in conformity with those reported by Patel *et al.* (2008), Kachhadiya *et al.* (2010), Kadu *et al.* (2014), Ravisankar *et al.* (2014), Majeed *et al.* (2016), Dass and Bhattacharyya (2017), Kamble *et al.* (2017), Dass and Bhattacharyya (2017), Sanbagavalli *et al.* (2017), Tambe *et al.* (2017), Maurya *et al.* (2019), Swetha and Bhunia (2019), Bhatt *et al.* (2020), Athnere *et al.* (2020), Revathi *et al.* (2021), Yeganehpoor *et al.* (2021), Sharma *et al.* (2022) and Maurya *et al.* (2024).

The combination of drip irrigation at 0.8 PEF, residue mulch at 5 t ha<sup>-1</sup> and salicylic acid spray at 100 ppm (I<sub>3</sub>M<sub>1</sub>S<sub>1</sub>) provided the highest economic returns and B: C ratios, highlighting the synergistic effects of these treatments. I<sub>3</sub>M<sub>1</sub>S<sub>1</sub> recorded gross realizations of ₹ 3,14,853 ha<sup>-1</sup> in 2022 and ₹ 3,38,966 ha<sup>-1</sup> in 2023, with net realizations of ₹ 2,37,526 ha<sup>-1</sup> and ₹ 2,62,423 ha<sup>-1</sup>, and B: C ratios of 4.07 and 4.43 respectively. These results underscore the importance of integrated management practices in optimizing economic returns and resource use efficiency in summer groundnut cultivation. This might be due the higher benefits obtained under these treatments were also due to higher pod and haulm yields of summer groundnut. These findings are in vicinity with those reported by Kachhadiya *et al.* (2010), Kadu *et al.* (2014), Dass and Bhattacharyya (2017) and Sharma *et al.* (2022).

Commented [i31]: ???

**Table 4. Effect of resilient strategies on economics of summer groundnut**

Treatment	Cost of Cultivation (₹ ha <sup>-1</sup> )		Gross return (₹ ha <sup>-1</sup> )		Net return (₹ ha <sup>-1</sup> )		Benefit cost ratio	
	2022	2023	2022	2023	2022	2023	2022	2023
I <sub>1</sub> M <sub>0</sub> S <sub>0</sub>	173855	194894	69880	68578	103974	126317	2.49	2.84
I <sub>1</sub> M <sub>0</sub> S <sub>1</sub>	192587	210754	69996	68694	122591	142061	2.75	3.07
I <sub>1</sub> M <sub>0</sub> S <sub>2</sub>	182179	206191	74212	72910	107967	133281	2.45	2.83
I <sub>1</sub> M <sub>0</sub> S <sub>3</sub>	191071	208593	95872	94570	95199	114023	1.99	2.21
I <sub>1</sub> M <sub>1</sub> S <sub>0</sub>	190893	206419	78145	76843	112747	129576	2.44	2.69
I <sub>1</sub> M <sub>1</sub> S <sub>1</sub>	196825	215067	78261	76959	118564	138108	2.51	2.79
I <sub>1</sub> M <sub>1</sub> S <sub>2</sub>	195855	212466	82477	81175	113378	131291	2.37	2.62
I <sub>1</sub> M <sub>1</sub> S <sub>3</sub>	196285	213028	104137	102835	92147	110193	1.88	2.07
I <sub>2</sub> M <sub>0</sub> S <sub>0</sub>	193826	212155	67101	66530	126725	145626	2.89	3.19
I <sub>2</sub> M <sub>0</sub> S <sub>1</sub>	198462	218213	67217	66645	131244	151568	2.95	3.27
I <sub>2</sub> M <sub>0</sub> S <sub>2</sub>	193631	211630	71433	70862	122198	140769	2.71	2.99
I <sub>2</sub> M <sub>0</sub> S <sub>3</sub>	198398	216093	93093	92522	105305	123571	2.13	2.34
I <sub>2</sub> M <sub>1</sub> S <sub>0</sub>	192761	211356	75366	74795	117394	136562	2.56	2.83
I <sub>2</sub> M <sub>1</sub> S <sub>1</sub>	216026	243567	75482	74910	140544	168657	2.86	3.25
I <sub>2</sub> M <sub>1</sub> S <sub>2</sub>	205296	221094	79698	79127	125598	141968	2.58	2.79
I <sub>2</sub> M <sub>1</sub> S <sub>3</sub>	202347	219008	101358	100787	100989	118222	2.00	2.17
I <sub>3</sub> M <sub>0</sub> S <sub>0</sub>	211762	235020	68946	68162	142817	166858	3.07	3.45

I <sub>3</sub> M <sub>0</sub> S <sub>1</sub>	227094	255927	69061	68278	158033	187649	3.29	3.75
I <sub>3</sub> M <sub>0</sub> S <sub>2</sub>	221863	247667	73278	72494	148585	175173	3.03	3.42
I <sub>3</sub> M <sub>0</sub> S <sub>3</sub>	226595	251844	94938	94154	131657	157690	2.39	2.67
I <sub>3</sub> M <sub>1</sub> S <sub>0</sub>	212371	236955	77211	76427	135160	160528	2.75	3.10
I <sub>3</sub> M <sub>1</sub> S <sub>1</sub>	314853	338966	77326	76543	237526	262423	4.07	4.43
I <sub>3</sub> M <sub>1</sub> S <sub>2</sub>	297180	336277	81543	80759	215638	255518	3.64	4.16
I <sub>3</sub> M <sub>1</sub> S <sub>3</sub>	267757	302007	103203	102419	164555	199588	2.59	2.95

Pod price = 58 ₹ kg<sup>-1</sup> (2022) &  
63 ₹ kg<sup>-1</sup> (2023)

Haulm price = 2.5 ₹ kg<sup>-1</sup>

## Conclusion

On the basis of the results obtained from the present two-years field study, it can be concluded that effective profitable production in summer groundnut can be obtained by application of two common surface irrigation (first immediately after sowing and second 5-6 days after first irrigation) each of 50 mm depth followed by scheduling drip irrigation at 0.8 PEF (operating pressure: 1.2 kg cm<sup>-2</sup> and lateral spacing: 90 cm) at alternate day with residue mulch @ 5 t ha<sup>-1</sup> and foliar application of stress mitigation chemicals like, salicylic acid @ 100 ppm or potassium nitrate @ 2% at 45 and 60 DAS under medium black calcareous soil of saurashtra region.

**Commented [i32]:** Based on the findings from the two-year field study conducted,

**Commented [i33]:** Additionally, the foliar application of stress mitigation chemicals, such as salicylic acid at 100 ppm or potassium nitrate at 2%, should be administered at 45 and 60 days after sowing, specifically in the

## Highlights

Enhanced growth and yield through drip irrigation at 0.8 PEF

Effectiveness of residue mulching at 5 t ha<sup>-1</sup>

Impact of stress mitigation chemicals like salicylic acid, potassium nitrate and kaolin

Integrated agronomic practices for optimal results for resilient groundnut production

**Commented [i34]:** Delete not need to maintain

## References

- Alotaibi, M.; Hendawy, S. E.; Mohammed, N.; Alsamin, B.; Suhaibani, N. and Refay, Y. 2023. Effects of salicylic acid and macro and micronutrients through foliar and soil applications on the agronomic performance, physiological attributes and water productivity of wheat under normal and limited irrigation in dry climatic conditions. *Plants*, **12**: 2389. <https://doi.org/10.3390/plants12122389>
- Athnere, S.; Kolage, A. K.; Yadav, P. and Garg, K. 2020. Effect of irrigation schedules and foliar application of potash on yield and yield attributes of summer greengram (*Vigna radiata* L.). *International Journal of Current Microbiology and Applied Sciences*, **9**(06): 919-926. <https://doi.org/10.20546/ijcmas.2020.906.115>
- Barrs, H. D. and Weatherly, P. E., 1962, A re-examination of relative turgidity for estimating water deficit in leaves. *Australian Journal of Biological Science*, **15**: 413-428.
- Bhatt, M.; Singh, V.; Srivastava, A.; Pant, A. K. and Kumar, V. 2020. Effect of irrigation regime and mulching on growth, yield and yield attributing character of *rabi* maize (*Zea mays* L.) in Tarai region. *International Journal of Chemical Studies*, **8**(1): 2232-2237. <https://doi.org/10.22271/chemi.2020.v8.i1ah.8604>

- Bhattarai, S.; Wagle, P.; Dahal, B. and Jaggi, K. 2023. Effect of mulch on yield of groundnut (*Arachis hypogaea* L.) in Nepal. *Archives of Agriculture and Environmental Science*, **8**: 8-13. <https://doi.org/10.26832/24566632.2023.080102>
- Chaithra, G. M. and Sridhara, S. 2018. Yield and physiological parameters of maize as influenced by the application of super absorbent polymer and mulching under rainfed conditions. *International Journal of Current Microbiology and Applied Sciences*, **7**(08): 216-224. <https://doi.org/10.20546/ijcmas.2018.708.028>
- Chandrasekaran, H. and Subrahmaniyan, K. 2020. Evaluation of irrigation levels and plant geometry for drip irrigation in groundnut (*Arachis hypogaea* L.). *Journal of Oilseeds Research*, **37**. <https://doi.org/10.56739/jor.v37i4.136743>
- Chaudhary, A. Wagle, P.; Mishra, A.; Sah, M.; Shah, P.; Chaudhary, R.; Yadav, B. 2024. Effects of organic mulch and plastic mulch on groundnut yield and weed biomass at Nawalpur, Sarlahi. *International Journal of Scientific and Research Publications*, **14**: 190-194. <http://doi.org/10.29322/IJSRP.14.01.2023.p14517>
- Chinchorkar, S. S., Subbaiah, R.; Kulshrestha, M. and Vaidya, V. B. 2022. Evolution of Weather Parameters and Trend Analysis over Junagadh, Gujarat. *Journal of AgriSearch*, **9**(1): 97-102. <https://doi.org/10.21921/jas.v9i01.9902>
- Chomsang, K.; Morokuma, M.; Agarie, S. and Toyota, M. 2021. Effect of using drip irrigation on the growth, yield and its components of soybean grown in a low rainfall region in Japan. *Plant Production Science*, **24**(4): 466-480.
- Cochran, W. G. and Cox, G. M. 1967. "Experimental Designs" (Second Edition). John Willey and Sons Inc., New York.
- Das, A.; Layek, J.; Ramkrushna, G. I.; Rangappa, K.; Lal, R.; Ghosh, P. K.; Choudhury, U. B.; Mandal, S.; Ngangom, B.; Dey, U. and Narendra P. 2019. Effects of tillage and rice residue management practices on lentil root architecture, productivity and soil properties in India's Lower Himalayas. *Soil and Tillage Research*, **194**(104313): 1-10. <https://doi.org/10.1016/j.still.2019.104313>.
- Dass, A. and Bhattacharyya, R. 2017. Wheat residue mulch and anti-transpirants improve productivity and quality of rainfed soybean in semi-arid north-Indian plains. *Field Crops Research*, **201**: 9-19. <https://doi.org/10.1016/j.fcr.2017.05.011>
- Dong, J.; Xue, Z.; Shen, X.; Yi, R.; Chen, J.; Li, Q.; Hou, X. and Miao, H. 2023. Effects of different water and nitrogen supply modes on peanut growth and water and nitrogen use efficiency under mulched drip irrigation in xinjiang. *Plants (Basel)*, **12**(19) :3368. <https://doi.org/10.3390/plants12193368>
- Elshamly, A. M. S.; Parrey, Z. A.; Gaafar, A. R. Z.; Siddiqui, M. H. and Hussain, S. 2024. Potassium humate and cobalt enhance peanut tolerance to water stress through regulation of proline, antioxidants and maintenance of nutrient homeostasis. *Scientific Reports*, **14**: 1625. <https://doi.org/10.1038/s41598-023-50714-z>
- Eman, E.; Moursy, M. and Hamed, L. 2022. Response of certain peanut (*Arachis hypogaea* L.) varieties to water regime using different irrigation systems in new reclaimed areas. *Journal of the Saudi Society of Agricultural Sciences*, <https://doi.org/10.1016/j.jssas.2022.12.004>
- Ghosh, P. K., Devi, D., Bandyopadhyay, K. K. and Mohanty, M. 2006. Evaluation of straw and polythene mulch for enhancing productivity of irrigated summer groundnut. *Field Crops Research*, **99**(1): 76-86.
- Harini, H. V. P.; Kannan, S. V.; Sampathkumar, T. and Sheeba, S. 2022. Yield enhancement through a low-cost irrigation system for groundnut. *International Journal of*

*Environment and Climate Change*, **12**(11): 1461-1466.  
<https://doi.org/10.9734/IJECC/2022/v12i1131126>

- Jain, N. K.; Meena, H. N.; Bhaduri, D. and Yadav, R. S. 2018. Drip fertigation and irrigation interval effects on growth, productivity, nutrient and water economy in summer peanut. *Communications in Soil Science and Plant Analysis*, **49**(19): 2406-2417.
- Kachhadiya, S. P.; Chovatia, P. K.; Jadav, K. V. and Sanandia, S. T. 2010. Effect of irrigation, mulches and antitranspirant on yield, quality and economics of summer pearl millet. *International Journal of Agricultural Sciences*, **6**(1): 278-282.
- Kadu, S. P.; Patel, D. B.; Patel, R. B. and Patel, A. P. 2014. Effect of moisture stress and evapotranspiration suppressants on growth and yield of summer groundnut (*Arachis hypogaea* L.). *Trends in Bioscience*, **7**(22): 3628-3632.
- Kamble, D. R.; Gokhale, D. N.; Jadhav, P. B. and Gadade, G. D. 2017. Effect of irrigation level and mulches on yield and economics of drip irrigated summer groundnut. *Green Farming*, **8**(1): 413-416.
- Kannan, V.; Srinivasan, G.; Babu, R.; Thiyageshwari, S. and Sivakumar, T. 2017. Effect of biochar, mulch and ppfm spray on leaf relative water content, leaf proline, chlorophyll stability index and yield of cotton under moisture stress condition. *International Journal of Current Microbiology and Applied Sciences*, **6**(6): 604-611.  
<https://doi.org/10.20546/ijcmas.2017.606.071>.
- Karimian, M.; Mehdi, D. and Hamidreza, R. 2015. Effect of foliar application of salicylic acid and drought stress on quantitative yield of Mungbean. *Journal of Novel Applied Sciences*, **3**(5): 512-515.
- Kaur, R.; Singh, A.; Singh, K. G. and Arora, D. 2020. Productivity of soybean (*Glycine max* L.) under drip irrigation. *Indian Journal of Agronomy*, **65**(1): 116-119.
- Khavari, M.; Fatahi, R. and Zamani, Z. 2021. Salicylic acid and kaolin effects on pomological, physiological and phytochemical characters of hazelnut (*Corylus avellana*) at warm summer condition. *Scientific Reports*, **11**: 4568.  
<https://doi.org/10.1038/s41598-021-83790-0>
- Kong, J.; Dong, Y.; Zhang, X.; Wang, Q.; Xu, L.; Liu, S.; Hou, J. and Fan, Z. 2015. Effects of exogenous salicylic acid on physiological characteristics of peanut seedlings under iron-deficiency stress. *Journal of Plant Nutrition*. **38**(1): 10.
- Krishna, K.; Kumar, Y. and Katiyar, N. K. 2018. Effect of plant geometry, nitrogen level and antitranspirants on physiological growth, yield attributes, WUE and economics of mustard (*Brassica juncea* L.) under semiarid conditions of western Uttar Pradesh. *Journal of Pharmacognosy and Phytochemistry*, **7**(2): 226-229.
- Kumar, M. R.; Bhunia, S. R. Anchra, S.; Kumari, N. and Bhawariya, A. 2022. Effect of irrigation levels and intervals on yield, water use efficiency and economics of groundnut (*Arachis hypogaea* L.) cultivars under drip system. *Biological Forum – An International Journal*, **14**(1): 829-832.
- Lakhran, H.; Sharma, O. P.; Singh J. H.; Bajjiya, R. and Sharma, S. 2021. Mitigation strategies of heat stress in wheat (*Triticum aestivum* L.) through adjustment in sowing temperature and application of bio-regulators. *Communications in Soil Science and Plant Analysis*, <https://doi.org/10.1080/00103624.2021.2094394>
- Londhe, V.; Solanke, A.; Pawar, P.; Dingre, S. and Jadhav, J. 2017. Effect of irrigation methods and crop geometry on growth, yield and economics of pigeonpea + groundnut intercropping systems. *Contemporary Research in India*, **7**(3): 14-19.

- Majeed, S.; Muhammad, A.; Muhammad, L.; Muhammad, I. and Mubshar, H. 2016. Mitigation of drought stress by foliar application of salicylic acid and potassium in mungbean (*Vigna radiata* L.). *Legume Research*, **39**(2): 208-214.
- Mathukia, R. K. Panara, D. M.; Patel, K. C. and Mathukia, P. R. 2014. Response of *Kharif* groundnut (*Arachis hypogaea* L.) to land layouts, mulches and nutrient management. *Innoriginal International Journal of Sciences*, **1**(1): 3-4.
- Mathukia, R. K.; Chhodavadia, S. K.; Sagarka, B. K. and Bhalu, V. B. 2019. Summer groundnut (*Arachis Hypogaea* L.) response to micro-irrigation and transient water stress. *Research & Reviews: Journal of Crop Science and Technology*, **8**(2): 16-20.
- Maurya, A. C.; Verma, S. K. and Kumar, S. 2017. Effect of irrigation regimes, mulching and nutrient management on moisture extraction pattern and productivity of summer groundnut (*Arachis hypogaea* L.). *Frontiers in Crop Improvement*, **5**(spl.): 208-211.
- Maurya, A. C.; Verma, S. K.; Kumar, S. and Lakra, K. 2019. Interaction effect of irrigation scheduling, mulching and integrated nutrient management on summer groundnut (*Arachis hypogaea* L.) yields under subtropical conditions of eastern Uttar Pradesh. *Journal of Applied and Natural Science*, **11**(2): 384-387.
- Maurya, A.; Verma, S.; Kumar, S.; Shekhar, S.; Taria, S.; Alam, B.; Yadav, A. and Banjara, T. 2024. Agronomic management: irrigation scheduling, mulching and integrated nutrient management influences growth, yields, quality and economics of summer groundnut in a subtropical condition of India. *Journal of Plant Nutrition*, **47**(7). <https://doi.org/10.1080/01904167.2024.2308191>
- Meena, B. P.; Kataria, G. K.; Singh, C. K.; Godha, U. N. and Y Pandya, Y. 2023. Impact of plant growth modulators on morphophysiological characteristics of *Kharif* groundnut variety GJG-31. *The Pharma Innovation Journal*, **12**(8): 1419-1422.
- Meena, H.; Meena, R. S.; Lal, R.; Yadav, G. S.; Mitran, T.; Layek, J.; Patil, S. B.; Kumar, S. and Verma, T. 2017. Response of sowing dates and bio regulators on yield of cluster bean under current climate in alley cropping system in eastern U.P. *Legume Research*, **5**(41): 563-571.
- Meenakshi, M and Prakash, V. 2013. Impact of foliar application of salicylic acid on growth and lipid peroxidation in water stress tolerance of *Glycine max* (L.) Merrill. *International Journal of Bioassays*, **3**(1): 1721-1728.
- Menpadi, H.; Patil, R. P.; Amaregouda, A. and Umesh, M. R. 2022. Growth, yield and economics of groundnut (*Arachis hypogaea* L.) as influenced by foliar sprays of stress mitigating compounds. *The Pharma Innovation Journal*, **11**(12): 791-794.
- Metin, S.; Sevim, S. Y.; Dilsat, B. K.; Ibrahim, Y.; Mehmet, Y., Orhan, K. and Clever, M. M. 2023. Comparison of the partial root drying and conventional drip irrigation regimes on seed, oil yield, quality and economic return for peanut crop. *Irrigation Science*, **41**:603–628. <https://doi.org/10.1007/s00271-023-00854-x>
- Minh, T. X.; Nguyen, C. T.; Tran, H. T. Nguyen, T. H. G. and, Nguyen, T. T. 2023. Effect of mulching on growth and yield of peanut (*Arachis hypogaea* L.) on the coastal sandy land in nghe an province, vietnam. *Indian Journal of Agricultural Research*, **57**(4): 487-491.
- Muthulakshmi, S and Lingakumar K. 2017. Role of Salicylic acid (SA) in plants- A Review. *International Journal of Applied Research*, **3**(3):33-37
- Nezhad, S. T.; Mobasser, H.; Dahmardah, M. and Karimian, M. 2014. Effect of foliar application of salicylic acid and drought stress on quantitative yield of mungbean (*Vigna radiata* L.). *Journal of applied sciences*, **3**(5): 512-515.
- Nkrumah, P.; Amadu, A. M. and Ayeh, K. O. 2021. Influence of salicylic acid and potassium nitrate on plant height and flowering time of groundnut (*Arachis Hypogaea* L.) under

varying salinity and drought- induced stresses. *Ghana Journal of Science*, **62**(1): 26-36. <https://dx.doi.org/10.4314/gjs.v62i1.3>

- Patel, P. G.; Chaudhary, P. P. and Patel, M. M. 2008. Effect of mulches and antitranspirants on biometric components and seed yield of castor (*Ricinus communis* L.) under rain fed condition. *Gujarat Agricultural Universities Research Journal*, 33(1-2): 21-23.
- Patro, H. and Ray, M. 2016. Effect of mulching, hydrogel and nutrient management on productivity of summer groundnut. *Asian Journal Environmental Science*, **11**(2): 156-159.
- Pawar, A. B.; Khadtare, S. V.; Shinde, V. A. and Aiwale, H. N. 2018. Nutrient uptake and dry matter partitioning of summer groundnut under different sowing windows and irrigation levels. *An International Refereed, Peer Reviewed & Indexed Quarterly Journal in Science, Agriculture & Engineering*, Special issue **3**(D): 236-238.
- Pradhan, J., Baliarsingh, A., Pasupalak, S. and Mohapatra, A. K. 2018. Effect of different irrigation scheduling & mulching on productivity of groundnut (*Arachis hypogaea* L.) of east & south eastern coastal plain of Odisha. *The Pharma Innovation Journal*, **7**(10): 689-691.
- Ramanjaneyulu, A. V.; Ramulu, V.; Ramana, M. V. and Mamatha, K. 2021. Crop performance, water use, economics and energy indices in rabi groundnut (*Arachis hypogaea* L.) under micro irrigation methods. *Journal of Environmental Biology*, **43**: 326-337. <http://doi.org/10.22438/jeb/43/2/MRN-1852>
- Ranjitha, P.; Ramulu, V.; Jayasree, G. and Narender Reddy, S. 2018. Growth, yield and water use efficiency of groundnut under drip and surface furrow irrigation. *International Journal of Current Microbiology and Applied Sciences*, **7**(9): 1371-1376.
- Rathore, V. S.; Nathawat, N. S.; Bhardwaj, S.; Yadav, B.; Kumar, M.; Santra, P. Kumar, P.; Reager, M.; Yadava, N. and Yadav, O. P. 2018. Optimization of deficit irrigation and nitrogen fertilizer management for peanut production in an arid region. *Scientific Reports*, **11**. 10. <https://doi.org/1038/s41598-021-82968-w>
- Ravisankar, N.; Balakrishnan, M.; Ambast, S. K.; Srivastava, R. C.; Bommayasamy, N. and Subramani, T. 2014. Influence of irrigation and crop residue mulching on yield and water productivity of table purpose groundnut in humid tropical Island. *Legume Research*, **37**(2): 195-200.
- Raviteja, D. H.; Dhanoji, M.; Kuchanur, P.; Patil, A.; Barkeer, S. and Patil, R. 2024. Exogenous application of plant growth promoters and thermotolerance-induced seeds improves the growth, yield and yield components of summer maize. *Plant Archives*, **24**(1): 679-692.
- Revathi, P.; Arun, M. N.; Sukumar, K.; Dhruva, S. and Bindu, G. S. M. 2021. Enhancing the water stress tolerance in soybean (*Glycine max* L.) through anti-transpirants and mulch. *Legume Research*, **44**(11): 1315-1321.
- Sairam, R. K. 1994. Effect of moisture-stress on physiological activities of two contrasting wheat genotypes. *Indian Journal of Experimental Biology*, **32**: 594-597.
- Sanbagavalli, S.; Vaiyapuri, K. and Marimuthu, S. 2017. Impact of mulching and anti-transpirants on growth and yield of soybean (*Glycine max* L. Merrill). *Advances in Environmental Biology*, **11**(1): 84-89.
- Sarkar, S. and Sarkar, A. 2017. Improving growth and productivity of linseed using mulches under different levels of irrigation. *Journal of Crop and Weed*, **13**(1): 1-6.
- Sharma, A.; Ramakrishnan, R. and Nair, R. 2022. Coriander seed quality and vigour assessment as affected by bioregulators and varied irrigation regimes based on climatological approach. *International Journal of Environment and Climate Change*, **12**(11): 2554-2565. <https://doi.org/10.9734/ijecc/2022/v12i1131247>

- Singh, A. and Singh, K. G. 2021. Effect of drip irrigation, fertigation and plastic mulching on growth and yield of soybean (*Glycine max*). *Indian Journal of Agronomy*, **66**(1): 56-60.
- Singh, R.; Shivran, A. C.; Bamboriya, S. D. and Choudhary, S. 2023. Influence of stress mitigating chemicals on growth, yield parameters and quality of coriander (*Coriandrum sativum* L.). *The Pharma Innovation Journal*, **12**(3): 2795-2797.
- Singh, S. P.; Singh, R. K. and Kumar, S. 2017. Response of irrigation schedule, mulching and hydrogel on various growth analysis attributes and nutrient uptake of wheat (*Triticum aestivum* L.). *Journal of Pharmacognosy and Phytochemistry*, **6**(5): 2569-2573.
- Solanke, B. H.; Shinde, R. H.; Lolamwad, N. S. and Kolekar, V. B. 2021. Effect of irrigation regimes and land configurations on growth and yield of summer groundnut (*Arachis hypogaea* L) in submontane zone of Maharashtra. *The Pharma Innovation Journal*, SP-10(11): 2920-2923.
- Soni, J. K.; Raja, N. A. and Ajaykumar, R. 2017. Response of physiological and yield attributing parameters of groundnut under drip and micro sprinkler fertigation. *The Bioscan*, **12**(1): 373-376.
- Sounda, G.; Mandal, A.; Moinuddin, G. and Mondal, S. K. 2006. Effect of irrigation and mulch on yield, consumptive use of water and water use efficiency of summer groundnut. *Journal of Crop and Weed*, **2**(1): 29-32.
- Swetha, C. and Bhunia, S. R. 2019. Yield attributing characters and yield of groundnut (*Arachis hypogaea* L.) as influenced by irrigation levels and mulches. *International Journal of Current Microbiology and Applied Sciences*, **8**(2): 2607-2613.
- Tambe, A. D.; Sinare, B. T. and Andhale, R. P. 2017. Effect of land configuration, irrigation regimes and potassium levels on physiological traits and yield of summer groundnut (*Arachis hypogaea* L.). *Journal of Agricultural and Food Chemistry*, **4**(1): 1- 5.
- Taufiq, A.; Wijanarko, A. and Kristiono, A. 2017. Effect of mulching and amelioration on growth and yield of groundnut on saline soil. *Journal of Degraded and Mining Lands Management*, **4**(4): 945-954.
- Thombare, A. D.; Mane, A. V.; Burondkar, M. M. Kasture, M. C. and Desai, S. S. 2017. Effect of stress mitigating compound on biochemical and quality parameters of groundnut (*Arachis hypogaea* L.). *International Journal of Chemical Studies*, **5**(5): 1063-1067.
- Vaghasia, P. M.; Dobariya, K. and Daki, R. 2023. Effect of drip irrigation, fertigation and plant geometry on yield and water use efficiency in summer groundnut (*Arachis hypogaea* L.). **34**. <https://doi.org/10.56739/jor.v34i3.137755>.
- Yeganehpour, F.; Salmasi, Z. S.; Sawicka, B.; Sadeghianpour, H.; Najafi, M. and Borzouie, N. 2021. Effect of drought stress, fertilizer chemical and biofertilizer and salicylic acid on some traits of Coriander (*Coriandrum sativum* L.). <https://doi.org/10.13140/RG.2.2.18450.58564>
- Yong-qiang, Z.; Na, Z.; Ya-jie, L.; Li-li, S.; Wen-xiu, X.; Jiang-long, P. and Chun-hui, H. 2015. Impacts of Drip Irrigation Amount on Physiological Characteristics of Summer Soybean and Filed Micro-climate. *Chinese Journal of Agrometeorology*, **36**(05): 586.
- Zayton, A. M.; Guirguis, A. E. and Allam, K. A. 2014. Effect of sprinkler irrigation management and straw mulch on yield, water consumption and crop coefficient of peanut in sandy soil. *Egyptian Journal of Agricultural Research*, **92**(2): 657- 674.

UNDER PEER REVIEW

