

COMPARATIVE PHYTOCHEMICAL, GC-MS, PROXIMATE, MINERALS AND VITAMINS COMPOSITIONS OF 95% ETHANOL LEAF EXTRACTS OF *GONGRONEMA LATIFOLIUM* AND *OCIMUM GRATISSIMUM*.

ABSTRACT

Gongronemalatifolium and *Ocimumgratissimum* have been reported to contain phytochemicals, minerals and vitamins and these offer a great opportunity for the development of new types of therapeutics. The comparative qualitative phytochemical, vitamin and mineral element compositions of gas chromatography-mass spectroscopy (GC-MS), proximate ethanol leaf extract of *Gongronema latifolium* (GL) and *Ocimum gratissimum* (OG) was studied. The leaves of GL and OG were collected, identified, washed, sliced, air-dried and pulverized into powder. The powdered samples were weighed and macerated in 95% absolute ethanol for 72 hours. They were filtered and the filtrate was concentrated to dryness using a water bath at 40°C. The samples were analyzed, for qualitative phytochemicals, GC-MS, proximate, vitamin and mineral element compositions using standard methods. The qualitative results of the leaves of GL and OG showed that the plant leaves contain alkaloids, saponins, tannins, flavonoids, phenols and cardiac glycosides. The GC-MS analysis of ethanol leaves of GL and OG revealed that the plants contain 38 and 37 bioactive compounds respectively. Comparatively, the moisture content of OG (19.30 ± 0.20) was significantly ($P < 0.05$) higher than GL (16.97 ± 0.52). The protein composition of OG was significant ($P < 0.05$) higher (17.18 ± 0.22) than that of GL (2.43 ± 0.14). Similarly, the lipid composition of GL was significant higher ($P < 0.05$) (5.96 ± 0.11) than that of OG (2.34 ± 0.17). Ash composition of OG was significantly ($P < 0.05$) higher (14.87 ± 0.47) than that of GL (9.65 ± 0.20). Also, fibre content was significantly higher ($P < 0.05$) in OG (14.87 ± 0.47) compared to GL (9.91 ± 0.24). This result revealed also revealed higher percentage composition of carbohydrates (53.05 ± 1.27) and energy (343.77 ± 1.50) in OG compared to GL (40.33 ± 0.95) and (284.51 ± 2.91). Higher mineral compositions such as calcium, phosphorus, magnesium was seen in OG compared to GL and a significantly higher in sodium in GL compared to OG. Iron and Lead was found to be present only in GL. The vitamins of GL and OG was also significantly high ($P < 0.05$). From the results of this study, it can be concluded that GL and OG have rich bioactive constituents which can be employed in the formulation of novel drugs.

Keywords: *Gongronemalatifolium*, *Ocimumgratissimum*, Proximate composition, Phytochemicals, Vitamins, GC-MS

INTRODUCTION

Medicinal plants are useful in the treatment of ailments as it contains active metabolites. Most studies report the ability of medicinal plants to fight against diseases is due to their bioactive metabolite such as alkaloids, flavonoids, tannins, saponins and terpenes which

Comment [L1]: I suggest that the title be changed to:
Comparative analysis utilizing GC-MS of the vitamin and mineral content of the ethanolic extract of the leaves of *Gongronemalatifolium* and *Ocimumgratissimum*

Comment [L2]: It is important to remember that the research summary comprises a portion of the introduction and the goal of the study, followed by a brief description of the methodology used and a summary of the findings and conclusions.

Comment [L3]: The present research aimed to determine the compounds concentration qualitative phytochemical, vitamin and mineral element compositions of qualitative phytochemical, vitamin and mineral element compositions of ethanol leaf extract of *Gongronemalatifolium* (GL) and *Ocimumgratissimum* (OG) were analyzed through gas chromatography-mass spectroscopy (GC-MS).

Comment [L4]: showed significant differences for content and concentration of various phytochemical compounds through GC-MS analysis.

Comment [L5]: Results showed that the plant leaves contain alkaloids, saponins, tannins, flavonoids, phenols and cardiac glycosides.

Comment [L6]: Based on the study's results, it can be said that GL and OG are rich in bioactive ingredients that can be used to create novel medicine formulations.

Comment [L7]: Phytochemicals, vitamin, mineral element, GC-MS, ethanol leaf extract, *Gongronemalatifolium*, *Ocimumgratissimum*.

Comment [L8]: Please add more information about the plants used under study with sources to the introduction

Comment [L9]: Put space at beginning of paragraph

exert biological effects on the body(16). The plants can be used singly or combined to treat ailments. Most plants have both nutritional and therapeutic benefits. *Gongronemalatifolium* and *Ocimum gratissimum* have these properties.

Comment [L10]: The reference 1 is placed at the end of the second paragraph.

Gongronemalatifolium and *Ocimumgratissimum* have been reported to be used for several diseases as the contains some of these phytochemicals. Both plants are herbaceous shrub. They are commonly grown in gardens in Calabar, Cross River State, and Akwa Ibom State, Nigeria.

Gongronema latifolium is plant that belongs to the family Asclepiadae and is locally called Utazi by the Efiks, Ibibio and Quas by Igbos. It is commonly used as spice and vegetable in the traditional folk practice (33).Traditionally, *Gongronema latifolium* is used in the treatment of malaria, diabetes, constipation and hypertension as well as laxative in the Southern part of Nigeria(16).

Comment [L11]: Meaning reference 1

Ocimum gratissimum is commonly known as clove basil, sweet basil, tea bush, scent leaf or fever plant and it is a native to Africa, Madagascar and Southern Asia.Locally, *Ocimumgratissimum* is called Ntoñ by the Efiks and Ibibios, Daidoya by the Hausas, Nchwunwu by the Igbos and Efirinby the Yorubas.*Ocimum gratissimum* is used nutritionally in spicing food in most part of Nigeria(16) and it is also used as folk medicine for the treatment of many disease conditions such as respiratory disorders, cough, fever, sore throat, kidney stones, epilepsy, dermatitis, headache, stress and mental diseases. Most studies reports that *Ocimumgratissimum* contain important bioactive constituents such as alkaloids,tannins, phytas, oligosaccharides and flavonoidsand accounts for its high medicinal use.

Comment [L12]: Same reference 1

There are no sufficient studies on the comparative chemical composition of these leavesextracts reported. Therefore, this study investigated the comparative qualitative phytochemical, GC-MS, proximate, minerals and vitamins,analysis of 95% ethanolleaf extracts of *Gongronemalatifolium* and *Ocimum gratissimum* in a view to obtain information on their usage in human and disease treatment.

Comment [L13]: Delete this paragraph.

Comment [L14]: This studies is an addition to earlier research on these plants that made use of contemporary methods, such as GC-MS the identification of the active compounds with therapeutic properties.

Comment [L15]: of ethanolleaf extracts

Comment [L16]:

Comment [L17]: Put as a new paragraph

MATERIALS AND METHODS

Materials

Chemical

A 95% Ethanol (Sigma Alrich Chemicals) was purchased from a pharmaceutical shop in Uyo Metropolis.

Equipment

Weighing balance (Kerro, Model BL-3002), water bath, chopping board, knife, electric blender, What-Man No.1 filter paper

Comment [L18]: Delete this paragraph.

Collection and preparation of Plant materials

Fresh leaves of *Gongronema latifolium* and *Ocimum gratissimum* were purchased from Itam Market in Itu Local Government Area. The purchased plant leaves were wrapped and taken to the taxonomist at herbarium unit of Botany and Ecological Science Department, Faculty of Biological Science, University of Uyo, Uyo, for identification.

After identification, the fresh leaves were washed to get rid of debris, sliced and air dried for two weeks. 200g of the dried leaves each were then pulverized into powder using an electronic blender. The powdered samples were weighed and macerated in 95% absolute ethanol (Sigma Aldrich) which was obtained from at a chemical shop in for 72 hours. The solvents were then filtered off to obtain the extracts. The extracts obtained were concentrated to dryness using a water bath at a temperature of 45⁰C. The dried extracts were then stored in the refrigerator.

Comment [L19]: Put paragraph numbering

Comment [L20]: Put reference

QUALITATIVE PHYTOCHEMICAL ANALYSIS**Determination of Alkaloids**

Alkaloids was determined by adding few drops of Wagners reagent into 2ml of the ethanol extracts. A reddish brown precipitate formed, indicating the presence of alkaloids.

Comment [L21]: Put paragraph numbering
All diagnostic methods of qualitative phytochemical analysis are listed in a table.

Comment [L22]: Put reference

Determination of Flavonoids:

Comment [L23]: Put paragraph numbering

Twenty percent (20%) NaOH was added in few drops to 2ml of each extract. A yellow color was observed. Then, 70% dilute HCl was added in few drops and the yellow color disappeared. The flavonoids presence was determined by the formation and disappearance of colors.

Comment [L24]: Put reference

Determination of Saponins

Comment [L25]: Put paragraph numbering

Each extract (2ml) was mixed with 6ml of distilled water and shaken thoroughly. Bubbles or foams formed, indicating the presence of saponins.

Comment [L26]: Put reference

Determination of Tannins

Comment [L27]: Put paragraph numbering

10% alcoholic ferric chloride was added to 1ml of each extract. A blue/black color was formed, indicating the presence of tannins.

Comment [L28]: Put reference

Determination of Phenols

Comment [L29]: Put paragraph numbering

1ml of 5% aqueous ferric chloride was added to 1ml of each extract. A blue color formed, indicating the presence of phenols.

Comment [L30]: Put reference

Determination of Cardiac Glycosides

Comment [L31]: Put paragraph numbering

0.5ml of glacial acetic acid and 3 drops of 1% aqueous ferric chloride was added to 1ml of each extract. A brown ring formed at the edge, indicating the presence of cardiac glycosides.

Comment [L32]: Put reference

Determination of Terpenoids

Comment [L33]: Put paragraph numbering

0.5ml of chloroform and a few drops of concentrated sulphuric acid were added to 1ml of each extract. A reddish-brown precipitate appeared. This indicates the presence of terpenoids.

Comment [L34]: Put reference

Determination of steroids

Comment [L35]: Put paragraph numbering

About 0.5g of each extract was dissolved in 2ml of chloroform and was filtered. 2ml of concentrated sulphuric acid was added to the filtrate. A reddish-brown color was formed at the interphase, indicating the presence of steroidal ring.

Comment [L36]: Put reference

Determination of Anthraquinones

Comment [L37]: Put paragraph numbering

Into 0.5g of each extract was added 10ml benzene and was shaken. Then 5ml of 10% ammonia solution was added and thoroughly shaken. A pink-red or violent color was formed at the ammoniacal (lower) phase, indicating the presence of anthraquinones.

Comment [L38]: Put reference

GAS CHROMATOGRAPHY- MASS SPECTROSCOPY

The samples were analyzed using agilent technologies 7890A GC and 5977B MSD with experimental conditions of GC-MS system which are as follows: Hp 5-MS capillary standard non-polar column, dimension: 30M, ID: 0.25 mm, Film thickness: 0.25 μ m. Flow rate of mobile phase (carrier gas: He) was set at 1.0 ml/min. In the gas chromatography part, temperature programmed (oven temperature) was 40°C raised to 250°C at 5°C/min and injection volume was 1 μ l. Samples dissolved in methanol were run fully scan at a range of 40-650 m/z and the results were compared by using Nist mass Spectral library search programmed.

Comment [L39]: Put paragraph numbering

Comment [L40]: The workplace mentions the presence of the device.

Comment [L41]: Put reference

PROXIMATE COMPOSITION DETERMINATION

Determination of Crude Moisture

Two grams of the samples were added to the empty moisture dish and placed in an air oven. The two samples were dried in the hot air-drying oven at 110°C for 24 hours. The samples were then kept in a desiccator and allowed to cool after which the crucible with the dry samples were then weighed and returned to the oven for further 24 hours to make sure that the drying was completed. The weights were taken again, for each sample.

Comment [L42]: Put paragraph numbering

Comment [L43]: Put paragraph numbering

Comment [L44]: Put reference

The moisture was determined using the following formula:

% = Moisture = $\frac{W_1 - W_2}{W_1 - W_0} \times 100$

Where:

W₀ = weight of empty dish

W₁ = weight of fresh sample

W₂ = weight of dry sample

Crude Protein Determination

To estimate crude protein, it involves the determination of total nitrogen. The amount of crude protein was obtained by multiplying the nitrogen content by a factor of 6.25. A gram of each extract was digested by boiling in 10ml concentrated tetraoxosulphate (VI) acid, with the use of selenium as a catalyst. Boiling was done under a fume cupboard until a clear solution was obtained. The digested extracts were diluted to 100ml with distilled water. A portion of each digest (10ml) were mixed with equal volume of 45% NaOH solution in the Macham distillation apparatus. On distillation, the distillates were collected into 10ml each of basic acid solution, containing three drops of mixed indicators (methyl red and bromocresol green). A total of 50ml distillates each were collected and titrated against 0.02N H₂SO₄ solution. Titrations were done from green to deep blue point. A reagent blank was also run and titrated.

Comment [L45]: ???

Comment [L46]: Put paragraph numbering

Comment [L47]: Put reference

The moisture was determined using the following formula:

$$\% \text{ crude protein} = N_2 \times 6.25$$

$$\% N_2 = \frac{100}{W} \times \frac{14 \times N}{1000} \times \frac{V_f}{V_a} \times T - B$$

Where,

W= weight of sample analyzed

N= normality of titrant (H₂SO₄)

V_f= Total volume of dissolved extracts

V_a= Volume of dissolved extracts distilled

T = Titre value of samples

B = Titre value of reagent blank.

Crude Lipid Determination

A cleaned and dried round bottom flask was weighed W₁. Each of the dried samples (2g) were placed into a thimble and finally placed into a soxhlet extractor. A quantity petroleum spirit was added into the soxhlet extractor. The extraction went on for 6hours, then the apparatus set up was disconnected and the round bottom flask was dried for 10minutes and cooled in a desiccator and reweighed W₂. The difference in weight was used to calculate the percentage of lipid (24).

Comment [L48]: Put paragraph numbering

Comment [L49]: Put reference

Determination of Crude Fibre

Two grams of the extracts were weighed and put into 1litre control flask. Then 200ml of H₂SO₄ was added to each extract, boiled gently for 30minutes, filtered through a poplin cloth, stretched over 9cm Buchner funnel and mixed well with hot distilled water. The two samples were taken back into the flask with spatula and 100ml of boiling 1.25% NaOH were added, boiled gently to maintain a constant volume and filtered through a poplin cloth. The residues were washed thoroughly with hot distilled water and rinsed once

Comment [L50]: Put paragraph numbering

with 10% HCl and twice with industrial methylated ether (BP40-600C) and allowed to dry. The residues were kept overnight at 105°C in the oven, and cooled in a desiccator. The two samples were weighed again and ashes at 550°C for 90 minutes in a muffle furnace and weighed again.

The crude fibre was determined using the following formula:

$$\% \text{ Fibre} = \text{Dry weight} - \text{Ash weight} \times 100$$

Determination of Carbohydrates

The carbohydrate contents were determined as a difference between crude protein, sum of crude ash, lipid and crude fibre (6).

Formula:

$$\text{NFE} = 100\% (\% \text{ Ash} + \% \text{ crude lipid} + \text{Crude fibre} + \% \text{ Crude protein})$$

MINERAL ANALYSIS

Mg, Fe, Cu, Pb, Ca, and P were analyzed using atomic absorption spectrophotometer (AAS) while Na and K were analyzed using flame photometer. Using AAS, the ash solutions of the plant samples were prepared by weighing 5g each of the powdered plant samples and ashed at 550°C in muffle furnace for 5hrs, and the residues were dissolved in 100 ml of deionized water. Suitable salts of the metals were used to make their standards, lamps were fixed. The standard mineral solutions were injected to calibrate the AAS using acetylene gas. An aliquot of ash solutions was injected and the concentrations obtained from the AAS. Using the flame photometer, the diluents of sample was aspirated into the Jenway Digital flame photometer using the filter corresponding to each mineral element.

VITAMINS ANALYSIS

Comment [L51]: Put reference

Comment [L52]: Put paragraph numbering

Comment [L53]: Meaning reference 2

Comment [L54]: Put paragraph numbering

Comment [L55]: Put reference

Comment [L56]: Put paragraph numbering

Determination of Vitamin B1 (Thiamin)

5g of the sample extracts were homogenized with ethanol mixture (50 ml) and filtered into a 100 ml flask. The filtrates (10 ml) were pipetted and 10 ml of potassium dichromate was added. The absorbance was read at 360 nm in a spectrophotometer. A blank sample was prepared and the color also developed and read at the same wavelength.

Comment [L57]: Put paragraph numbering

Comment [L58]: Put reference

Determination of Niacin

5 g of each sample were treated with 50 ml of 1 N sulphuric acid and shaken for 30 minutes. Ammonia solution (three drops) was added to each sample and then filtered. Afterwards, 10 ml of each filtrate were added into different volumetric flask (50 ml) and 5 ml of 0.02M H_2SO_4 absorbance were measured in the spectrophotometer at 470nm.

Comment [L59]: Put paragraph numbering

Comment [L60]: Meaning reference 3

Determination of Riboflavin

5 g of each sample were extracted with 100ml of 95% ethanol solution and shaken for 1 hour. These mixtures were filtered into a 100 ml flask, while 10 ml of the extracts were poured into 50 ml volumetric flask. 10 ml of the 5% potassium permanganate and 10ml of the 30% H_2O_2 were added and allowed to stand over a hot water bath for about 30 min. Furthermore, 2 ml of the 40% sodium sulphate was added. This was made up to 50 ml mark and the absorbance was measured at 510 nm in a UV/visible spectrophotometer (UV-1601 SHIMADZU).

Comment [L61]: Put paragraph numbering

Comment [L62]: Meaning reference 3

Determination of Vitamin E (Tocopherol)

Spectrophotometrically, vitamin E contents were determined using a modified standard method of AOAC (3). 1.5 ml of plant extract, 1.5 ml of the standard and 1.5 ml of water were pipetted out separately into 3 stoppered centrifuge tubes. 1.5 ml of ethanol and 1.5 ml of xylene were added to all the tubes. The mixtures were stirred properly and centrifuged at 300 rpm. Xylene (1.0 ml) layer was transferred into another stoppered tube. 1.0 ml of dipyrityl reagent was added to each tube and shaken properly. The mixtures (1.5 ml)

Comment [L63]: Put paragraph numbering

were pipetted out into a cuvette and the extinction was read at 460 nm (A460). Ferric chloride solution (0.33 ml) was added to all the tubes and mixed well. The red color developed was read exactly after 15 minutes at 520 nm (A520) in a visible spectrophotometer.

Comment [L64]: Put reference

Determination of Vitamin C (Ascorbic Acid)

Comment [L65]: Put paragraph numbering

A method described by Baraleef *et al.* (7) and titrimetric method described by (23) were used in vitamin C determination. A gram of the test samples was extracted using 50ml of 6% EDTA/TCA extractant solution. The mixtures were thoroughly shaken and allowed to stand for 20 minutes at room temperature. Then were filtered and filtrates were treated with 20ml of 30% KI solution. 10ml of distilled water was added to each mixture. 1ml of 1% starch solution was added and titrated against dilute Cu SO₄ solution. Calculation of the vitamin C content was based on the relationship that 1ml of 0.008M CuSO₄ is equivalent to 0.088mg Vitamin C, hence, the formula:

Comment [L66]: Put reference

$$\text{Vitamin C (mg/100g)} = 100 \times 0.088 \times \frac{\text{Titre}}{W}$$

Where W= is weight of the sample

Determination of Vitamin A

Comment [L67]:

Vitamin A was determined spectrophotometrically using a method described by AOAC (3). The extracts (0.5g) were homogenized and saponified with 2.5ml of 12% alcoholic potassium hydroxide in a water bath at 60°C for 30 minutes. The saponified extracts were transferred to a separating funnel containing 10-15ml of petroleum ether and mixed properly. The lower aqueous layers were transferred to another separating funnel while the upper petroleum ether layer which contains carotenoids were collected. The extractions were repeated until the aqueous layers became colorless. Anhydrous sodium sulphate was added into petroleum ether extracts in small quantity to remove excess moisture. The volume of the final petroleum ether extracts was taken note. The absorbance of the yellow color was read in a visible spectrophotometer at 450nm using petroleum ether blank.

Comment [L68]: Put reference

RESULTS

The results of the phytochemical, GC-MS, proximate, minerals and vitamins compositions of 95% ethanol leaf extracts of *G. latifolium* and *O. gratissimum* obtained in this study are presented in tables 1-5. The qualitative results of the leaves of *Gongronema latifolium* and *Ocimum gratissimum* showed that the plant leaves contain alkaloid, saponin, tannin, flavonoids, phenol and cardiac glycosides. Different phytochemical/bioactive compounds of the ethanolic extracts of *Gongronema latifolium* and *Ocimum gratissimum* were analyzed using GC-MS. The chromatograms in Figure 1.0 and 2.0 and summarized in Table 2.a and 2.b.

Table 2.a and Figure 1.0 reveals that ethanol leaf extract *Gongronema latifolium* contain 38 bioactive compounds. This result revealed that the percentage of bioactive compounds present in this leaf extracts are Butylated Hydroxytoluene (39.86%), Octadecanoic acid, propylester (35.479 %), 2-Amino-4-(4-cyclohexyl-phenyl)-nicotinonitril (17.85%), Hexadecanoic acid, methyl ester (4.26%), n-Propyl 11-octadecenoate (3.96%), Dodecanoic acid, propyl ester (3.01%), Phytol (2.65%), 9-Octadecenoic acid (Z)-, methyl ester (2.33%), 9,12,15-Octadecatrien-1-yl (2.20%), 1-Docosen (1.71%), Dibutyl phthalate (1.68%), 2-Pentadecanol (1.66%), Tetradecanoic acid, propyl ester (1.58%), Oleic Acid (1.59%), 1-Docosene (1.54%), 9-Eicosene, (E)- (1.27%), trans,trans-9,12-Octadecadienoic acid, propyl ester (1.24%), Hexadecanoic acid, methyl ester (1.18%), Hexadecanoic acid, ethyl ester (1.10%), 2-Methyl-Z,Z-3,13-octadecadienol (0.98%), 9-Eicosene, (E)- (0.83%), 17-Pentatriacontene (0.69%), Cyclooctane, methyl- (0.66%), D-Mannitol, 1,2:5,6-bis-O-(1-methyl) (0.65%), 9-Eicosene, (E)- (0.61%), D-Limonene (0.59%), Acetic acid, chloro-, hexadecyl ester (0.49%), Cyclotetracosane (0.47%), Pentadecafluorooctanoic acid, octadecyl ester (0.47%), Methyl 8,10-dimethyl-hexadecanoate (0.45%), Carbonic acid, eicosyl prop-1-en-yl ester (0.32%), Cyclotetradecane, 1,7,11-trimethyl -4- (1-methyl) (0.22%), Cyclopentadecane (0.20%), Toluene (0.21%), Tetradecane (0.21%), Toluene (0.19%), 3-Eicosene, (E)- (0.15%), 1-Octadecene (0.10%),

Comment [L69]: 1

Table 2.b and Figure 2.0 reveals that ethanol leaf extract of *Ocimum gratissimum* contain 37 bioactive compounds. This result revealed that the percentage of bioactive compounds present in this leaf extracts are Butylated Hydroxytoluene (63.53%), Dodecanoic

Comment [L70]: 2

acid, propyl ester(9.27%) D-Mannitol, 1,2:5,6-bis-O-(1-methylethylidene)-(4.93%), 9-Octadecene, (E)-(1.91%), Tetradecanoic acid, propyl ester (1.69%), 1-Octadecene (1.61%), n-Propyl 11-octadecenoate (1.30%), Dibutyl phthalate(1.29%), 14-Octadecenoic acid, methyl ester (1.20%), Hexadecanoic acid, propyl ester (1.16%)Hexadecanoic acid, methyl ester(1.14%), Hexadecane(0.99%), 9,12-Octadecadienoic acid, methyl ester, (E,E)-(0.84%), 2-Piperidinone, N-[4-bromo-n-butyl]-(0.82%), 1-Octadecanesulphonyl chloride (0.45%)Diethyl 2-(2-cyanoethyl)-malonate(0.46%), Carbonic acid, eicosyl prop-1-en-yl ester (0.43%), Heptadecanoic acid, 16-methyl-, methyl ester (0.42%), Oxirane, [(hexadecyloxy)methyl]-(0.38%), Isopropyl linoleate(0.36%), 1-Docosene (0.33%), 2-Piperidinone, N-[4-bromo-n-butyl]-(0.32%), 1-Hexadecanol, 2-methyl(0.32%), Cyclodocosane,ethyl-Butanoic acid, 4-methoxy-, methyl ester (0.31%), Ethyl tetradecyl ether (0.30%), Butylated Hydroxytoluene (0.29%), Cyclotetradecane 1-(0.29%), Octadecene(2.40%), Cyclododecane (0.23%), D-Limonene(0.21%), Octadecanoic acid, propyl ester(0.18%), 13-Tetradecen-1-ol acetate (0.15%), 1-Decanol, 2-hexyl-(0.15%), Tetracosanal(0.02%), 1-Docosene(0.01%), and 2-Piperidinone, N-[4- bromo-n-butyl]-(0.01%) .

The results of the proximate composition of *G. latifolium* and *O. gratissimum* presented in table 3.0 Moisture (%) in GL is 16.97 ± 0.52 compared to OG which is 19.30 ± 0.20 . Hence, there is an increase ($P < 0.05$) in moisture content in OG compare to GL. The percentage protein and lipid composition of GL are 17.18 ± 0.22 and 5.96 ± 0.11 and that of OG are 2.43 ± 0.14 and 2.34 ± 0.17 . This shows an increase in % protein composition in GL compare to OG and an increase in lipid composition in GL compared to OG. Ash and fibre (%) in GL are 9.65 ± 0.20 and 9.91 ± 0.24 compared to OG which are 14.87 ± 0.47 and 14.87 ± 0.47 . There is an increase in ash composition of OG compared to GL and an increase in fibre content of GL compare to OG. The Carbohydrates and Energy (%) in GL are 40.33 ± 0.95 and 284.51 ± 2.91 compare to OG which are 53.05 ± 1.27 and 343.77 ± 1.50 . This result revealed that there is an increase in Carbohydrates and Energy content in OG compare to GL.

Table 4.0 shows the mineral compositions GL and OG. There is a significant increase ($P < 0.05$) in sodium, calcium, phosphorus, magnesium in OG compared to GL and a significant increase ($P < 0.05$) in sodium in GL compared to OG. Iron and Lead was found to be present in GL.

Comment [L71]: Table 3

Comment [L72]: 4

Table 5.0 shows the vitamins of GL and OG. There is a significant increase ($P < 0.05$) in riboflavin, niacin, tocopherol, vitamin C in GL compared to OG and an increase ($P < 0.05$) in thiamine, vitamin A in OG compared to GL.

Comment [L73]: 5

Table 1.0: Qualitative phytochemical compositions of 90% ethanol extracts of *Gongronemalatifolium* and *Ocimumgratissium*

Comment [L74]: 1

Compound	GL	OG
Alkaloid	+++	+++
Tannin	+++	+
Flavonoids	+++	+
Phenol	+++	++
Cardiac glycosides	+	++
Saponins	+++	+++

Comment [L75]: What meaning in Key ???

GL = *Gongronemalatifolium*, OG = *Ocimumgratissium*

Key

+ = Present

+++ = Present in Excess

--- = Absent

Table 2.a: Gas chromatography- mass spectroscopy (GC-MS) analysis of *Gongronema latifolium*

S/N	NAME OF COMPOUND	RETENTION TIME(MINS)	PEAK AREA%	MOLECULAR FORMULA	MOLECULAR WEIGHT(Kg/mol)	PROBALITY
1	Toluene	5.588	0.19	C ₆ H ₅ CH ₃	92.141	53
2	Toluene	5.781	0.21	C ₆ H ₅ CH ₃	92.141	45
3	D-Limonene	6.302	0.59	C ₁₀ H ₁₆	136.238	96
4	Cyclooctane, methyl-	16.203	0.66	C ₈ H ₁₆	112.21	70
5	Butylated Hydroxytoluene	19.426	39.86	C ₁₅ H ₂₄ O	220.356	98
6	9-Eicosene, (E)-	21.227	0.61	C ₂₀ H ₄₀	280.5	95
7	Tetradecane	21.394	0.21	C ₁₄ H ₃₀	198.39	80
8	D-Mannitol, 1,2:5,6-bis-O-(1 methyl	22.499	0.65	C ₆ H ₁₄ O ₆	182.172	64
9	Dodecanoic acid, propyl ester	23.579	3.01	C ₁₇ H ₃₄ O ₂	270.45	99
10	9-Eicosene, (E)-	25.779	0.83	C ₂₀ H ₄₀	280.5	94
11	Carbonic acid, eicosyl prop-1-en-yl ester	27.566	0.32	H ₂ CO ₃	62.03	35
12	Tetradecanoic acid, propyl ester	27.895	1.58	C ₁₄ H ₂₈ O ₂	228.376	99
13	Hexadecanoic acid, methyl	28.653	1.18	C ₁₆ H ₃₂ O ₂	62.9	97

14	ester Dibutyl phthalate	29.478	1.68	$C_{16}H_{22}O_4$	278.348	95
15	1-Docosen	29.910	1.71	$C_{22}H_{44}$	308.6	93
16	Hexadecanoic acid, ethyl ester	30.002	1.10	$C_{16}H_{32}O_2$	62.9	52
17	Acetic acid, chloro-, hexadecyl ester	31.327	0.49	CH_3COOH	60.052	64
18	Hexadecanoic acid, methyl ester	31.848	4.26	$C_{16}H_{32}O_2$	62.9	99
19	9-Octadecenoic acid (Z)-, methyl ester	32.041	2.33	$C_{18}H_{36}$	252.5	98
20	Phytol	32.329	2.65	$C_{20}H_{40}O$	296.5	91
21	Methyl 8,10-dimethyl-hexadecanoate	32.544	0.45	$C_{17}H_{34}O_2$	270.5	87
22	2-Methyl-Z,Z-3,13-octadecadienol	33.169	0.98	$C_{19}H_{36}O$	280.5	87
23	9,12,15-Octadecatrien-1-)-	33.292	2.20	$C_{18}H_{32}O_2$	280.4	93
24	1-Docosene	33.697	1.54	$C_{22}H_{44}$	308.6	94
25	trans,trans-9,12-Octadecadienoic acid, propyl ester	34.897	1.24	$C_{18}H_{32}O_2$	280.4	99
26	n-Propyl 11-octadecenoate	34.992	3.96	$C_{21}H_{40}O_2$	324.5	95
27	Octadecanoic acid, propylester	35.479	35.479	$C_{18}H_{36}O_2$	284.48	99
28	1-Octadecene	35.676	0.10	$C_{18}H_{36}$	252.486	93
29	17-Pentatriacontene	37.174	0.69	$C_{35}H_{70}$	490.9	83
30	2-Amino-4-(4-cyclohexyl-phenyl)-nicotinonitril	37.865	17.85	$C_8H_9N_3$	147.18	45
31	Cyclotetracosane	38.630	0.47	$C_{24}H_{48}$	336.6	55
32	Pentadecafluorooctanoic acid, octadecyl ester-	38.938	0.47	$C_8HF_{15}O_2$	414.1	93
33	Oleic Acid	39.474	1.59	$CH_3(CH_2)_7-CH=CH-$	282.468	55

34	9-Eicosene, (E)-	39.776	1.27	(CH ₂) ₇ -COOH C ₂₀ H ₄₀ O	280.5	83
35	Cyclopentadecane	40.622	0.20	C ₁₅ H ₃₀	210.40	90
36	3-Eicosene, (E)-	40.622	0.15	C ₂₀ H ₄₀	280.5	90
38	Cyclotetradecane, 1,7,11-trimethyl -4- (1-methyl	41.667	0.22	C ₁₄ H ₂₈	196.372	90

Table 2.b: Gas chromatography- mass spectroscopy (GC-MS) analysis of *Ocimum gratissimum*

S/N	NAME OF COMPOUND	RETENTION TIME(Mins)	PEAK AREA %	MOLECULAR FORMULA	MOLECULAR WEIGHT(Kg/mol)	PROBABILITY
1	D-Limonene	6.308	0.21	C ₁₀ H ₁₆	136.238	94
2	Cyclododecane	16.208	0.23	C ₁₂ H ₂₄	168.324	93
3	Butylated Hydroxytoluene	19.440	63.53	C ₁₅ H ₂₄ O	220.356	98
4	Butylated Hydroxytoluene	20.123	0.29	C ₁₅ H ₂₄ O	220.356	60
5	9-Octadecene, (E)-	21.234	1.91	C ₁₈ H ₃₆	252.5	95
6	Hexadecane	21.391	0.99	C ₁₆ H ₃₄	226.448	93
7	Diethyl 2-(2-cyanoethyl)-malonate	21.690	0.46	C ₇ H ₁₂ O ₄	160.17	44
8	Butanoic acid, 4-methoxy-, methyl ester	22.240	0.31	C ₄ H ₈ O ₂	88.11	47
9	D-Mannitol, 1,2:5,6-bis-O-(1-methyl ethylidene)-	22.514	4.93	C ₆ H ₁₄ O ₆	182.172	78
10	Ethyl tetradecyl ether	22.905	0.30	C ₁₉ H ₄₀ O ₂	300.52	43
11	Carbonic acid, eicosyl prop-1-en-yl ester	23.178	0.43	H ₂ CO ₃	62.03	46
12	Dodecanoic acid, propyl ester	23.579	9.27	C ₁₂ H ₂₄ O ₂	43.2	98
13	Heptadecanoic acid, 16-	24.377	0.42	C ₁₇ H ₃₄ O ₂	270.45	83

	methyl-, methyl ester					
14	1-Octadecene	25.780	2.40	C ₁₈ H ₃₆	252.486	95
15	1-Octadecanesulphonyl chloride	25.906	0.45	C ₁₈ H ₃₇ ClO ₂ S	353.00	83
16	Oxirane, [(hexadecyloxy)methyl]-	27.569	0.38	C ₂ H ₄ O	44.05	49
17	Tetradecanoic acid, propyl ester	27.895	1.69	C ₁₄ H ₂₈ O ₂	228.376	99
18	Hexadecanoic acid, methyl ester	28.650	1.14	C ₁₆ H ₃₂ O ₂	62.9	97
19	Dibutyl phthalate	29.478	1.29	C ₁₆ H ₂₂ O ₄	278.348	95
20	1-Octadecene	29.910	1.61	C ₁₈ H ₃₆	252.486	98
21	Hexadecanoic acid, propyl ester	1.850	1.16	C ₁₆ H ₃₂ O ₂	62.9	99
22	9,12-Octadecadienoic acid, methyl ester, (E,E)-	31.923	0.84	C ₁₈ H ₃₂ O ₂	280.452	99
23	14-Octadecenoic acid, methyl ester	32.040	1.20	C ₁₈ H ₃₂ O ²	280.4	98
24	Cyclotetradecane	32.331	0.29	C ₁₄ H ₂₈	196.372	74
25	1-Docosene	33.698	0.33	C ₂₂ H ₄₄	308.6	94
26	Isopropyl linoleate	34.899	0.36	C ₂₁ H ₃₈ O ₂	322.5	99
27	n-Propyl 11-octadecenoate	34.992	1.30	C ₂₁ H ₄₀ O ₂	324.5	99
28	Octadecanoic acid, propyl ester	35.476	0.18	C ₁₈ H ₃₆ O ₂	284.48	50
29	2-Piperidinone, N-[4-bromo-n-butyl]-	39.427	0.32	C ₉ H ₁₆ BrNO	234.13	86
30	2-Piperidinone, N-[4-bromo-n-butyl]-	39.771	0.82	C ₉ H ₁₆ BrNO	234.13	94
31	Tetracosanal	40.033	0.02	C ₂₄ H ₄₈ O	352.647	91
32	1-Hexadecanol, 2-methyl-	40.431	0.32	C ₁₆ H ₃₄ O	242.44	90
33	13-Tetradecen-1-ol acetate	40.799	0.15	C ₁₆ H ₃₀ O ₂	254.41	89

34	1-Docosene	40.844	0.01	$C_{22}H_{44}$	308.6	89
35	1-Decanol, 2-hexyl-	40.965	0.15	$C_{10}H_{22}O$	158.28	87
36	2-Piperidinone, N-[4-bromo-n-butyl]-	41.086	0.01	$C_9H_{16}BrNO$	234.13	91
37	Cyclodocosane,ethyl-	41.32	0.32	$C_{12}H_{24}$	168.324	97

UNDER PEER REVIEW

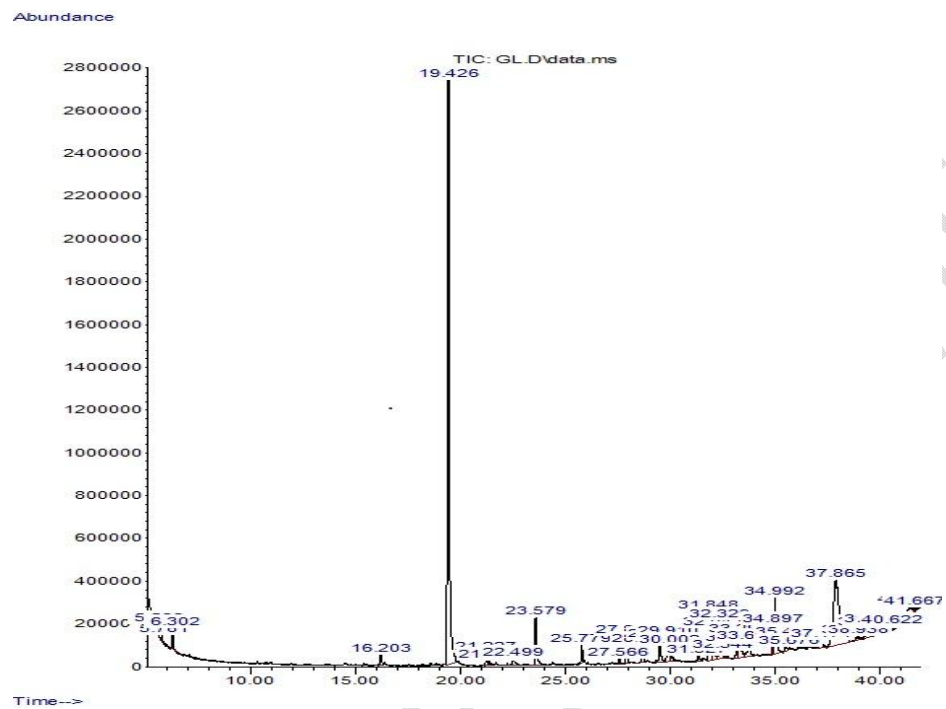


Figure 1.0: GC-MS spectra of all the compounds detected from the ethanolic leaf extract of *Gongronema latifolium*.

Comment [L76]: 1

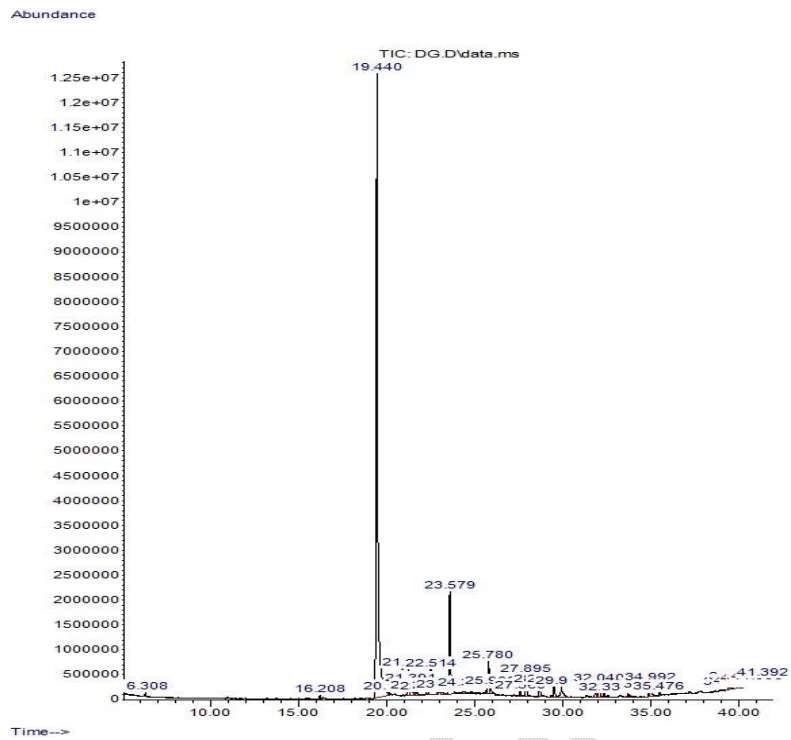


Figure 2: GC-MS spectra of all the compounds detected from the ethanolic leaf extract of *Ocimum gratissimum*

Comment [L77]: 2

Table 3.0: Proximate compositions (mg/100g) of ethanol leaf extracts of *Gongronemalatifolium* and *Ocimumgratissimum*

Comment [L78]: 3

Proximate Composition	<i>Gongronema latifolium</i>	<i>Ocimum gratissimum</i>
Moisture	16.97 ± 0.52	19.30 ± 0.20*
Protein	17.18 ± 0.22	2.43 ± 0.14*
Lipids	5.96 ± 0.11	2.34 ± 0.17*
Ash	9.65 ± 0.20	14.87 ± 0.47*
Fibre	9.91 ± 0.24	8.01 ± 0.57
Carbohydrates	40.33 ± 0.95	53.05 ± 1.27*
Energy	284.51 ± 2.91	343.77 ± 1.50*

Data presented as Mean ± Standard Error of Mean (SEM). Mean value for *Gongronemalatifolium* and *Ocimumgratissimum* were compared using 'Independent Student t Test' and they were considered significantly different at $p < 0.05$. Asterisk (*) indicates that the mean value for *Ocimum gratissimum* is significantly different from mean value for *Gongronema latifolium*.

Table 4.0: Mineral compositions (mg/100g) of ethanol leaf extracts of *Gongronemalatifolium* and *Ocimumgratissimum*

Comment [L79]: 4

Mineral	<i>Gongronema latifolium</i>	<i>Ocimum gratissimum</i>
Sodium	107.78 ± 0.32	199.05 ± 1.32*
Potassium	333.74 ± 0.71	321.24 ± 0.83*
Calcium	113.99 ± 0.55	247.04 ± 0.61*
Magnesium	51.19 ± 0.44	339.66 ± 0.85*
Phosphorus	124.38 ± 0.45	459.32 ± 1.60*
Iron	21.32 ± 0.60	
Lead	41.31 ± 0.81	

Data presented as Mean ± Standard Error of Mean (SEM). Mean value for *Gongronema latifolium* and *Ocimum gratissimum* were compared using 'Independent Student t Test' and they were considered significantly different at $p < 0.05$. Asterisk (*) indicates that the mean value for *Ocimum gratissimum* is significantly different from mean value for *Gongronema latifolium*.

Table 5.0: Vitamins compositions (mg/100g) of ethanol leaf extracts of *Gongronemalatifolium* and *Ocimumgratissium*

Comment [L80]: 5

Vitamins	<i>Gongronema latifolium</i>	<i>Ocimum gratissimum</i>
Thiamine	0.14 ± 0.02	0.49 ± 0.05*
Riboflavin	2.16 ± 0.02	0.46 ± 0.02*
Niacin	1.03 ± 0.02	0.24 ± 0.02*
Tocopherol	4.75 ± 0.34	1.90 ± 0.13*
Vitamin C	18.04 ± 0.07	11.32 ± 0.65*
Vitamin A	352.88 ± 1.75	901.66 ± 0.40*

Data presented as Mean ± Standard Error of Mean (SEM). Mean value for *Gongronema latifolium* and *Ocimum gratissimum* were compared using 'Independent Student t Test' and they were considered significantly different at $p < 0.05$. Asterisk (*) indicates that the mean value for *Ocimum gratissimum* is significantly different from mean value for *Gongronema latifolium*.

DISCUSSION

Phytochemicals are compounds which are produced by plants and these chemicals help to reduce the risk of diseases caused by fungi, bacteria and viruses. On qualitative analysis of the leaf extracts of *Gongronemalatifolium* and *Ocimumgratissium*, it was seen that these leaf extracts contain phytochemicals such as alkaloids, flavonoid, saponins, cardiac glycosides, tannins and phenolic compounds. The presence of these phytochemicals in the leaves of *Gongronemalatifolium* and *Ocimumgratissium* revealed that these plants may be of medicinal importance (16).

Most experimental studies show that some of these phytochemical components elicit numerous biological activities against diabetes, anemia and many other disease conditions. Studies revealed that saponins which is present in both plants can reduce the level of plasma cholesterol and therefore is a potential remedy for atherosclerosis, diabetes, obesity and other health conditions (5). Serum cholesterol reductive capacity of saponins is by initiating resin-like action, reducing enterohepatic reabsorption of bile acids (31). The liver enhances the conversion of cholesterol to bile acid leading to concomitant hypocholesterolemia (20, 25). Na^+ efflux is inhibited by saponins resulting in an increased Na^+ concentration in cells, thereby activating a Na^+ - Ca^{2+} antiport (27). Increased cytosolic Ca^{2+} is produced by this effect and strengthens heart muscle contraction, causing a reduction in congestive heart failure (27). Proteins leakage and degradation of cell wall enzymes from the cell can also be caused by saponins (36).

Hypoglycemic and hypolipidemic effects of alkaloids, flavonoids and tannins has been reported by many studies (34). Most metabolic activities in the body can be regulated by alkaloids. Because of the antioxidant property of flavonoid, it can be very effective on endothelial function, thereby reducing LDL oxidation (9). Flavonoids can also be used in targeting cancer tumor as it can inhibit the promotion of growth and progression of tumors (29). Plant growth regulation, development and disease resistance can be enhanced by phenols and in combined state with flavonoids can initiate series of activities such as antioxidant, antimutagenic, anticarcinogenic, anti-inflammatory among others (21,4). The leaves of *Gongronemalatifolium* and *Ocimumgratissimum* is seen to contain tannin and this phytochemical has an antiviral activity. Inhibition of pathogenic fungi, prophylactic and therapeutic effect against cancer cells by tannins through different mechanism (22).

Comment [L81]: Please renumber the sources according to their appearance in the text of the research.

Comment [L82]: ?

Comment [L83]: ?

Comment [L84]: ?

Comment [L85]: ?.

Comment [L86]: ?

Comment [L87]: ?

Comment [L88]: ?

Gas chromatography-mass spectrometry is an analytical method that make use of gas chromatography and mass spectroscopy features. It is used in the identification of different substances such as drugs, plant chemicals, food and flavor and unknown samples. This technique is used in quantifying an amount of substances by comparing the relative concentration among the atomic masses in the generated spectrum. The present study reveals that the ethanol leaf extracts of *Gongronemalatifolium* and *Occimumgratissimum* contains D-limonene, D-mannitol, 1,2,5,6-bis-o-(1-methyl), carbonic acid, eicosyl prop-1-en-yl-ester, tetradecanoic acid, hexadecanoic acid, debutyl phthalate, 1-docosene, 9-octadecanoic acid, n-propyl 11-octadecenoate, octadecanoic acid, 1-octadecene, cyclooctane hydroxytoluene, 9-eicosene, acetic acid, chlorohexadecyl ester, methyl 8,10-dimethyl-hexadecanoate, 2-methyl-Z,Z,Z-3,13-octadecanienol, 9,12,15-octadecatrien-1, tran,trans-9-12-octadecadienoic acid, propyl ester, 17-pentriacontene, 2-amino-4-(4-cyclohexyl-phenyl) nicotinonitril, cyclotetracosane, pentadecafluorooctanoic acid, oleic acid, phytol, cyclopentadecane, 3-eicosene and toluene.

D-limonene possess pharmacological activities. Limonene possess bioactivities like the antiviral, anti-inflammatory, anti-tumor, and antibacterial agents (35). Reports shows that limonene can act as prodrug due to the therapeutic potency of its metabolites such as effective agents (13). The antimicrobial activity of limonene is due to its lipophilic and lipid layer changing the properties and functions of the cell wall and leading to the loss of intracellular components and cell death (14). Also, most experimental studies report the antidiabetic potential of limonene. Limonene antidiabetic potential is due to its ability to decrease blood glucose levels, enhances insulin levels, decreased MDA levels and improved activities of CAT, SOD, GR and GSH levels. Studies reports limonene great influence in plasma lipoprotein levels. Limonene is also reported to have anti-tumor effect, due to its ability to cause G₀/G₁ cancer cell cycle arrest through the inhibition of post-translational modification of signal transduction of proteins involved in the Ras/ MAPK pathway by depleting farnesylated Ras level (35). Equally, literatures report the antioxidant properties of D-mannitol. D-mannitol has free radical scavenging properties (10), protecting active substance like hyaluronic acid against radical degradation by oxygen derived free radicals (2). Mannitol can act through the up-regulation of catalase level which is decreased by oxidative stress (18). Also, the hypoglycemic effect of mannitol is due to its partial absorption by the body. Hexadecanoic acid possess some biological activities such as antioxidant, hypocholesterolemia, nematicide and pesticide (28). Studies also reports that aside from the flavoring role of 9,12-

Comment [L89]: Please renumber the sources according to their appearance in the text of the research, in all subsequent paragraphs

octadecadienoic acid, it is also responsible for important pharmacological actions such as antioxidant, anti-cancer, anti-fungal, anti-anociceptive, hepatoprotective, depressant and wound healing activities(15). 9,12,15- octadecatrienoic acid (Z,Z,Z) exhibits antiarthritic, anti-androgenic, hepato-protective, anti-inflammatory, antieczemic, 5-alpha reductase, hypocholesterolemic, antiacne and antihistamine effects(17). Study report that 9,12,15- octadecantrienic and phytol may play a significant role in the treatment of cancer (19).

Proximate and mineral composition is important in human and animal nutrition and understanding the modes of action of these medicinal plants is important (16). These compositions in plants makes medicinal plants more important than chemotherapy in complex diseases such as diabetes (30). The present study revealed the leaves of *Gongronema latifolium* and *Ocimum gratissimum* contain moisture, protein, lipids, ash, fibre, carbohydrates and energy. For one to have a good health, nutrient is needed. Nutrient supply energy, build the body structures, regulate and control of body processes. (16). Medicinal plants provide dietary supplements and some may promote bowel regularity and enhance frequent waste elimination including bile acid. The proximate analysis revealed that the studied *Gongronema latifolium* and *Ocimum gratissimum* are good sources of carbohydrate and protein. The carbohydrates and proteins present in *Gongronema latifolium* and *Ocimum gratissimum* may be a mixture of bioactive sugars, glycoproteins or proteins which give most of the vegetables their medicinal potency against certain diseases (16). Reports shows diseases like obesity, diabetes, breast cancer, hypertension and gastrointestinal disorder can be reduced by dietary fibers(26). Fibre has a physiologic effect in the gastrointestinal tract (GIT) function, promoting the reduction of extracolonic pressure which is beneficial in diverticular diseases (16). Blood cholesterol and blood sugar can be lowered by dietary fibre. It absorbs fats and cholesterol. Diabetes and postprandial hyperglycemia management have been implicated by dietary fibres(16).

This study also revealed the presence of Na, K, P, Fe, Ca, Mg and Pb in the leaves extracts of *Gongronema latifolium* and *Ocimum gratissimum*. Most of these mineral acts as cofactor in enzymatic activities. The presences of this nutritional elements make plants a source of nourishment for the body. Hemoglobin contain an essential trace element-iron and hemoglobin function in the transportation of oxygen from the lungs to tissues and metabolic waste like CO₂ from the tissues back to the lungs for excretion. Iron

also plays an important role in the normal functioning of the central nervous system (1). Hemoglobin also serves as buffer to regulate changes in blood pH.

In this study, the presence of vitamins such as A, C, thiamine, riboflavin, niacin and tocopherol were also seen in the ethanol leaf extracts of these plants. The micronutrients- antioxidant vitamins and minerals roles have been reported in many studies (8). Most antioxidant enzymes or defense system of the body processes involved in lipid metabolism in general make use of mineral elements (12). Nutritional disorders such as serum increase in cholesterol and triacylglycerol can occur due to absence or imbalance in nutritional content of diet (34). Micronutrients present in these plants exert antihyperglycemic action and ameliorate macro vascular complication (34).

CONCLUSION

The wide distribution of nutrients in the leaf extracts of *Gongronemalatifolium* and *Occimumgratissimum* studied gives vital information as a rationale for its possible use by human and animal for nutritional purposes and as a tonic appetizer in folk medicine. Because of the phytochemical compositions, these plants therapeutic traces promote good health and proper functional mechanism in the body.

REFERENCE

1. Adeyeye, E. and Otokiti M.K.O.(1999). Proximate composition and some nutritional valuable minerals of two varieties of *Capsicum annum* (bell and cherry peppers). *Discovery of Innovation*, 11: 75 -81.
2. Andre, P and Villian, F. (2017). Free radical scavenging properties of mannitol and its role as a constituents of hyaluronic acid fillers: A literature review. *International Journal of Cosmetic Science*,39: 355-360.
3. AOAC. (2000). Official method of analysis of Association of Analytical Chemists International. 17th Edition, Horowitz, Pp.23-45
4. Asha, K., Rassika, C.T., Nirmala, R.D. and Jyoti, P.S. (2011). *Annals of Biological Research*, 2(1): 176-180.

Comment [L90]: Put space at biggening of paragraph

Comment [L91]: Please note that reference should be written according to the journal's instructions.

5. Atangwho, I.J., Ebong, P.E., Egbung, G.E., Eteng, M.U and Eyong, B.U. (2007). Effect of *Vernonia amygdalina Del.* on liver function in alloxan-induced hyper glycaemic rats. *Journal of Pharmacy and Bioresources*, 4(1):1-7.
 6. Bakare, B. (1985). Method of biochemical analysis of plants tissues. Agronomy Department. University of Ibadan. 137-148.
 7. Baraleef, E.O., Okwu, D.E. and Ndu, C.U. (1999). Vitamin C determination. *Fundamentals of clinical chemistry* 3rd edn. Philadelphia: W.B. Saunders Co. Pp. 328-329.
 8. Battell, M.L., Rodrigues, B., Yuen, V. G and McNeill, J. H. (1999). Treatment and pharmacological interventions in streptozotocin diabetes. In J. H. McNeill's (Ed.), *Experimental Models of Diabetes*, 195-216.
 9. Cheng, H.Y., Lin, C.C. and Lin, T.C. (2002). Anti-herpes simplex virus type 2. *Chemistry*, 43: 2162-216
 10. Damien T., Ola, F. H., Blouet, E., Manilduth, R., Marysc, M. and Sandrine C. (2020). Determination of antioxidant effect of polyols in cell-free environment. *Innovation Hub*, Pp.36
 11. ElOlemyl, M.M., Almuhtadi, F.J. and Affi, A. A. (1994) *Experimental phytochemistry: A Laboratory manual*. King Saud University Press, Saudi Arabia. ISBN 9960505H3. Pp. 21-61.
 12. Gorman, LS (1992). *Lipids and lipoproteins. Clinical Chemistry. Principles, Procedures, Correlations*. 2nd edition. Philadelphia: J. B Lippincott Company, 1992, 354-357
 13. Hardcastle, I.R., Rowland, M.G., Barber, A.M., Grimshaw, R.M., Mohaw, M.K and Nutley B.P. (1999). Inhibition of protein prenylation by metabolites of limonene. *Biochemical Pharmacology*, 57:801-809.
 14. Hernandez, C., Taleb-contin, S.H., Bartolomeo A.C.D., Bertoni, B.W., France, S.C. and Pereira A.M.S. (2014). Chemical composition and antifungal activity of the essential oils of *Schinus molle* collected in the spring and winter. *Natural product Community*, 9:1383-1386
 15. Ingole, A.S., Kadaren, M.P., Kute, S.M., Mange, P.R., Theng, V.D., Lahane, O.R., Nikas, A.P., Kawal, Y.U and Nagrik S.U. (2021). A review of pharmacological activities of vanillic acid. *Journal of Drug Delivery Therapeutics*, 11: 200-204.
 16. Ito F. Usuh and Arit J. Ekpo. (2015). Comparative phytochemical and nutritional compositions of 80% ethanolic leaves extracts of *Gongronema latifolium* and *Ocimum gratissimum*. *Journal of Science*, 5 (12): 313-320.
 17. Janamic, R.K., Priya, V. and Vijayalakshmi K. (2011). Determination of bioactive components of cyanodondactylon by GCMS analysis. *New York Science Journal*, 4: 191-195.
-

18. Jorn-Horn, L., MiMi, C., Jhao-Wei, H., Hsiung, W., Li-Kang, H., Wynn, H.T., Yei-ching, C., Chi-Ming, H., Cheng-Deng, K., Hui-yen, C. Fang-ping, C. and Hsiao-ming, C.(2010). Therapeutic effects and mechanisms of action of mannitol during H₂O₂- induced oxidative stress in human retinal pigment epithelium cells. *Journal of Ocular Pharmacology and Therapeutics*.26(3)249-57.
19. Kavitha, R. (2021). Phytochemical screening and GCMS analysis of bioactive compounds present in ethanolic extracts of leaf and fruits of *trichosanthesisDioica* ROXB. *International Journal of Pharmaceutical Sciences and Research*, 12(5) 2755-2764.
20. Kritchevsky D.(1977). Dietary fiber and other dietary factors in hypocholesterolemia. *American Journal of Clinical Nutrition*, 30: 979-984.
21. Middleton, E and Kandaswami, C.(1994) The impact of plant flavonoids on mammalian biology; Implications for immunity, inflammation and cancer. In: Harborne, J.B. (Ed.), *The Flavonoids*. Chapman and Hall. London, Pp. 619-652.
22. Narayanan, N., Thirugnanasambantham, P. and Viswanathan, S.(1998). Antinociceptive, anti-inflammatory and antipyretic effects of ethanol extract of *Clerodendronserratum* roots in experimental animals. *Journal of Ethnopharmacology*, 2: 45.
23. Okwu, D.E. and Ndu, C.U. (2006). Evaluation of the phytonutrients, mineral and vitamin contents of some variety of yams. *International Journal of Molecular Medicine in Advanced Society*, 12:199-203.
24. Oyeleke, O. A (1984). Outline of food analysis. Department of Biochemistry, Ahmadu Bello University, Zaria, Nigeria
25. Potter, D.P., Topping, D.L. and Oakenfull, D.(1979). Soya saponins and plasma cholesterol. *Lancet*, 1: 223.
26. Saldanha, L.G.(1995). Fiber in the diet of United States children results of National Surveys. *Pediatrician*, 96: 994-996.
27. Schneider, G and Wolfing, J.(2004). Synthetic cardenolides and related compounds. *Current Organic Chemistry*, 8: 14.
28. Sheela D. and Uthayakumari(2013). *Bioscience Discovery*,4:47-53
29. Stevens J.F., Hart, H.T., Hendricks, H andMadingre, T.M.(1992). Alkaloids of some European and Macaronesian diode and semepervivodea (crassulaceae). *Phytochemistry*, 31: 3917-3924.
30. Tiwari, A.K and Rao, J.M. (2002). Diabetic mellitus and multiple therapeutic approaches of phytochemicals: Present status and future prospects. *Current Science*, 83(1):30-37.
31. Topping, D.L., Storer, G.B., Calvert, G.D., Illman, R.J., Oakenfull, D.G. and Weller, R.A. (1980). Effects of dietary saponins on fecal bile acids and neutral sterols, plasma lipids and lipoprotein turnover in the pig. *American Journal of Clinical Nutrition*, 33: 783-786
32. Trease, E.G. and Evans, W.C. (1978) pharmacognosy 11thedition Macmillan publisher ltd, 35 Red lion square,10.

Comment [L92]: Delete underline

33. Ugochukwu, N.H. and Babady, N.E. (2003). Antihyperglycemic effect of aqueous and ethanolic extracts of *Gongronema Latifolium* leaves on glucose and glycogen metabolism in livers of normal and streptozotocin-induced diabetic rats. *Life Science*, 73:1925-1938.
34. Usuh, I.F., Akpan, H.D., Ekaidem, I.S., Uboh, E.F. and Luke, U.O. (2015). Changes in blood glucose, body weights and serum lipids of Streptozotocin-induced diabetic rats treated with combined leaf extracts of *Gongronemalatifolium* and *Ocimum gratissimum*. *European Journal of Scientific Research*, 130(1): 68 – 81.
35. Yusif, M.M., Micheal, A., Ximing, X. and Jiangnan Y.(2018). Biochemical significance of limonene and its metabolites. Future prospects for designing and developing highly potent anticancer drugs. *Biosciences Reports*, 38(6)1253
36. Zablutowicz, R.M., Hoagland, R.E. and Wagner, S.C. (1996). Effect of saponins on the growth and activity of Rhizosphere bacteria. *AdvanceExperimental Medicine and Biology*, 405: 83-95.

UNDER PEER REVIEW