

Short communication

STUDY ON THE BREEDING BIOLOGY AND CAPTIVE REARING AND BIOLOGY OF *Bracon brevicornis*

Abstract

The extensive use of synthetic insecticides in agriculture, especially in developing countries, has caused severe environmental and health issues, such as pest resistance and biodiversity loss. This study explores the potential of biological control as a sustainable alternative by examining the life table parameters of the parasitoid wasp, *Bracon brevicornis* (Hymenoptera: Braconidae) on its host, *Corcyra cephalonica* (Lepidoptera: Pyralidae). The research involved the rearing of *C. cephalonica* and *B. brevicornis* under controlled conditions ~~and as well as the monitoring~~ of their life cycle stages. Key findings include an incubation period of 1.5 days, a larval period of 4.5 days, and a pupal period averaging of 5 days, with the adult longevity ranging from 23 to 40 days. The study observed high rates of egg hatching (89.3%), pupation (95.8%), and adult emergence (93.8%), and an average fecundity of 200-240 eggs. These results highlight *B. brevicornis* as a promising biological control agent, offering an eco-friendly alternative to chemical pesticides.

Formatted: Font: Italic

Formatted: Font: Italic

Formatted: Font: Italic

Formatted: Font: Italic

Keywords: *Bracon brevicornis*, Biology, Biocontrol agent

Formatted: Font: Italic

INTRODUCTION:

The widespread use of synthetic insecticides in modern agriculture across developing countries has proven effective in quickly reducing pest populations. However, prolonged and indiscriminate application has led to significant issues. These include environmental contamination, biodiversity loss, the emergence of insecticide-resistant pests, pest resurgence, outbreaks of secondary pests, increased reliance on chemical inputs, and toxicological hazards from pesticide residue accumulation in the food chain. Addressing these challenges is crucial for achieving efficient insect control and mitigating environmental and health risks. (Armes *et al.*, 1992; Kranthi *et al.*, 2002).

In recent years, the growing public concern over potential health hazards of synthetic pesticides has led to the exploration of biological control agents due to their environmental feasibility, eco-friendliness and sustainability. Biological control of pest insects by natural enemies may be potential, cost effective and eco-friendly alternative to synthetic pesticides.

The cosmopolitan parasitoid wasps, *Bracon brevicornis* (Wesmael and *B. hebetor* Say) (Hymenoptera: Braconidae) are specific for lepidopterans. Braconid wasps represent one of the most diverse and abundant of parasitoid groups. These wasps are mostly ectoparasitoids, with the larvae developing on the outside of the body of the host. Recorded hosts include the larvae of many species of lepidopterans like *Corcyra cephalonica*, Corn borer (*Sesamia cretica*), European corn borer (*Ostrinia nubilias*), *Galleria mellonella*, *Helicoverpa armigera* and *Spodoptera litura*, along with some species of beetles, flies, hymenopterans; and true bugs. They are idiobionts, halting the development of the host when they lay eggs on its body. They have a single recurrent vein. They often pupate in silken cocoon outside the host. They are either solitary or gregarious in nature.

Commented [DR1]: Give the common name of *Corcyra cephalonica*

This paper is an attempt to study the life table parameters of the parasitoid, *B. brevicornis* on one of its laboratory host, *Corcyra cephalonica* Stainton under laboratory conditions. Life table studies of parasitoids and predators provide necessary information on their effectiveness against target pests, rate of population build-up, etc. under laboratory conditions, which can be correlated to natural conditions (Muthukrishnan *et al.*, 1995) and to schedule period of intervals for parasitoid releases. Life table computation helps in studying the population dynamics of the insect species and is an analytical tool which provide a description of the survivorship, development, etc. and reveal the maximum growth potential of a population (Gabre *et al.*, 2004).

MATERIALS AND METHODS

Rearing of *Corcyra cephalonica*

Materials required for rearing of *C. cephalonica*:

Sterilized sorghum, *Corcyra* rearing boxes/trays/jars were made up of plastic or wood with lid provided with wire mesh for aeration, *Corcyra* egg laying cage, black cloth, Mosquito net, Table, Racks for placing, *Corcyra* cages, Honey, Glycerin, Tubes for collecting *Corcyra* moth, Measuring cylinder, Plastic tubs for egg laying purpose, Brush, Roasted ground nut powder - 100 grams, Yeast - 5 grams, Wettable sulphur - 5 grams, Streptomycin sulphate - 0.05 gms

Commented [DR2]: Rewrite with correct sentence, clarity and meaning

Commented [DR3]: This large sentence is not grammatically correct. Split it into two sentences and also rewrite with exact meaning and clarity.

Preparation of egg laying cage of *Corcyra cephalonica*

Take a plastic bucket with lid. Cut the lid in circular shape leaving space for providing/fixing wire mesh for egg laying purpose in the (circular wire mesh). Make a hole on the centre of bottom of the plastic bucket to pour the collected adults in the bucket. Keep bucket inverted in the plastic tub for egg laying purposes.

Commented [DR4]: Correctly rewrite these sentences in past tense with clarity and meaning. For example "Make a hole on the centre of bottom of the plastic bucket to pour the collected adults in the bucket. Keep bucket inverted in the plastic tub for egg laying purposes." Should be revised as "A hole was made on the centre of bottom of the plastic bucket to pour the collected adults in the bucket. The bucket was then inverted in the plastic tub for egg laying purposes."

Production of *Corcyra C. cephalonica*

Sterilize the rearing boxes (if wooden) in hot air oven for 100 degree centigrade for 30 minutes. If plastic trays are used, wash them before use. Dry broken grains of jowar in sunlight properly and pour sterilized grain - 2.5 kg/box/tray. Add 100 grams of roasted ground nut powder, 5 grams of yeast, 5 grams of wettable sulphur, 0.05 gms of streptomycin sulphate in each box or tray. Mix well all ingredients. Sprinkle 1 cubic centimeter of *Corcyra* eggs/box/tray on the top of mixture(culture medium). Cover the box with lid, label the date of inoculation. Keep these boxes in racks protected by ant pans. Favourable temperature for rearing is 28+/-2 degree centigrade and Relative humidity, 75% +/- 5%. The moth starts emerging on 40th day. Bring the boxes ready for moth emergence and collect moths inside the net by glass tubes. Transfer the moths to egg laying chamber. Provide cotton soaked 20% honey+ vitamin E solution as adult food in the egg laying chamber. Collect the eggs daily and pour the eggs in a paper by tilting slightly downward so eggs come down side where as dust particles remain in upper side. Clean the eggs further by passing through different size sieves to 10, 15 and 40 meshes. Discard the moth after 4 days. Utilize the *Corcyra* eggs for *Trichogramma* production (or) host culture or store them in refrigerator at 10 degree centigrade for 7 days, if required.

Commented [DR5]: Correctly rewrite these sentences in past tense with clarity and meaning

Rearing of *Bracon brevicornis*

Materials required:

The following materials were used for the rearing of *B. brevicornis*:

Bracon spp., *Corcyra* eggs, Honey, Cotton, Containers, Muslin cloth, Rubber bands, Petri dishes, Tissue paper etc.

Formatted: Font: Not Bold

Formatted: Font: Not Bold

Formatted: Font: Italic

Production procedure:

B. brevicornis is amenable for mass rearing in the laboratory on the alternate host, *Corcyra cephalonica*. For small scale culture, glass chimney and the 'Sandwich' technique are adequate. About 20 mated females ~~are were~~ confined in a glass chimney, covering both sides of the chimney with muslin sheet held in place with rubber bands. A cotton swab soaked in 50% honey water solution ~~is was~~ stuck to the side of the chimney to serve as food. With many hymenoptera, adult nutrition is of great importance as it influences sex-ratio. High protein diet at times improves the sex ratio so that more female progeny are produced. For this, 'Proteinex' ~~can be was~~ used to

produce the desired results. Replacing honey with levulose or fructose also is beneficial in some cases. Exposure to sunlight frequently stimulates mating, oogenesis and fertilization of eggs.

Life table studies:

About 10 full grown larvae of *Corecya* were placed between two sheets of facial tissue paper and placed over the muslin sheet covering the wider mouth of the chimney. The tissue was again covered with a sheet of muslin and fastened with a pair of rubber bands. The chimney was then placed with the host larvae facing a window or light source. Females of *B. brevicornis* were attracted to the host larvae, probed through the muslin and paralyzed the larvae on each of which they laid about 25 eggs per day. At the end of 24 hours, the tissue sheets bearing parasitized larvae were removed and held in flat plastic containers until the parasitoid grubs hatched, completed development and spined cocoons. Two-day-old adults of *B. brevicornis* were stored for 30 days at 50 °C and 50-60% RH. We had checked the fungal growth on cotton swab if infested and then changed it accordingly. Frequently we need to re-immers the cotton swab in 10% honey solution. We observed the eggs daily and calculated the hatching percentage and mortality rate by using the following formula as follows (Fig 1):-

$$\text{Hatching (\%)} = \frac{\text{No of eggs hatched} \times 100}{\text{No of eggs laid}}$$

$$\text{Mortality rate} = 100 - \text{Hatching (\%)}$$

Larval duration was worked out by making observations daily after the completion of larval stage (cocoon) formation takes place. Later the strips were cleaned and kept into a large box. Pupal duration and pupal percent were worked out, with the following formula:-

$$\text{Pupal(\%)} = \frac{\text{No of pupae formed} \times 100}{\text{Total no. of larvae}}$$

After the emergence of adult, they were provided with cotton swab dipped in 10% honey solution and then mixed with protein X. Number of adults were counted based on the emerged hole left on the cocoons. Percentage of Adult emergence was calculated. Field release of emerged adults was done, following the formula as below:-

$$\text{Adult emergence (\%)} = \frac{\text{No of adults emerged} \times 100}{\text{Total no. of pupae}}$$

RESULTS AND DISCUSSION

Biology of *B. bracon brevicornis* (Fig 2):

Different developmental and life stages of *B. brevicornis* are discussed below and depicted in Fig. 2.

EGGS: *Bracon B. brevicornis* laid maximum numbers of eggs on dorso-lateral side of 5th to 6th abdominal segments of host larvae. The eggs were loosely attached to the host's integument and deposited parallel to the longitudinal axis of the body. The freshly laid eggs on *C. cephalonica* were creamy white in colour and become translucent later. The deposited eggs were spindle shaped slightly curved, hyaline colourless and loosely attached to the surface of the host body. *Bracon B. brevicornis* ~~lays~~ were laid eggs on lateral side of the host body and eggs were laid on all the segments except the first thoracic and the head region. Majority of eggs were laid close to the intersegmental folds on the lateral aspect, while some were on the dorsal aspect. Pre-oviposition period ~~is was~~ 1-2 days. Egg hatching period was 1-2 days ~~and the~~, average fecundity was found to be 200-240 and number of eggs ranged ~~ds~~ from 44 to 45. Hatching percentage was found to be 89.0% and mortality percentage was 10.7% (Table 1).

GRUBS: The first instar was apodous, white, devoid of any sign of external segmentation and distinguished from the egg only by waves of internal content of gut contraction and the movement of haemolymph within the parasite's body. The later instar larvae were whitish yellow and having clear larval body segmentation. The full-grown larvae showed tapering end and bulging of middle portion of body. Complete developmental period of grub is between 2 and 4 days (Table 1).

PUPAE: Final instar larvae ceased ~~ds~~ feeding then searched ed suitable place where it remains stationary this forms the beginning of cocoon formation stage. The cocoon of *B. brevicornis* was made loosely woven by silken threads and white in colour with oblong in shape and became ~~ome~~ tough to attached with substrate. Pupal period was between 3-7 days. Percentage of pupation and mortality was found to be is 95.0% and mortality 24.5%, respectively (Table 1).

ADULTS: The newly emerged adults were black in colour with transparent membranous wings and bent head. The femur of leg ~~is was~~ enlarged. The abdomen of females was bulged at anterior portion and sharp at posterior end with pointed ovipositor. The male abdomen ~~differs~~ differed from females due to short blunted posterior tip. The length of the male was shorter ~~er~~ as compared to females. Antennae ~~are were~~ filiform with 13 segments. Male lifespan ~~is was~~ less compared to

Formatted: Font: Not Bold

Formatted: Font: Not Bold, Not Italic

Formatted: Font: Not Bold

Formatted: Font: Not Bold

female. Adult life span was 23-40 days. Percentage of adult emergence and mortality was 93.8% and mortality 6.2%, respectively (Table 1).

Table 1: Life Cycle Metrics of *Bracon brevicornis* :

Parameters	Range (days)	Mean (days)
Incubation period	1-2	1.5
Larval period	4-5	4.5
Pupal period	3-7	5
Adult longevity	23-40	31.5
% Egg hatching	89.3%	-
% Pupation	95.8%	-
% Adult emergence	93.8%	-
Fecundity	200-240	-
No. of eggs	44-45	-
No. of larvae	40-42	-
No. of pupa	35-40	-
No. of adults	30-39	-

Formatted: Font: Not Bold

Formatted: Font: Not Bold

Formatted: Font: Not Bold

Formatted: Font: Not Bold

Formatted: Font: Not Bold

Formatted: Font: Not Bold

Formatted: Font: Not Bold

Formatted: Font: Not Bold

Formatted: Font: Not Bold

Formatted: Font: Not Bold

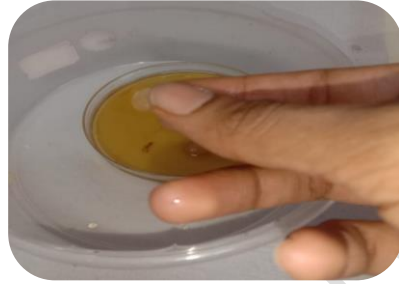
Formatted: Font: Not Bold

Formatted: Font: Not Bold

UNDER PEER REVIEW



1. Preparing honey solution



2. Dipping of cotton balls in honey solution and squeezing extra honey



3. Take a wide mouthed jar



4. Release 20 *Bracon* adults to the jar near light source as they are phototropic in nature



5. Cover the opening with a muslin cloth and tie it



6. Collecting *Corcyra* larvae



7. Add 10-15 corcyra bigger larvae on muslin cloth



8. Cover the larvae with a another muslin cloth, tie it & keep as it is for 2 days



9. After 2 days, transfer the parasitized larvae to the petri dish with a paper



10. Adult emerged

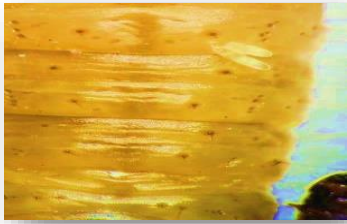


11. Emerged adults released in another container for mating purpose



12. Releasing *Bracon* adults on Maize plant

Fig 1. Laboratory rearing set up of *Bracon Brevicornis*



Eggs of *Bracon* on *Corcyra* larvae



Early instars of *Bracon*



Late instars of *Bracon*



Pupa of *Bracon*



Pupa is ready to emerge



Adult of *Bracon*

Fig 2. Different life stages of *Bracon brevicornis*

CONCLUSION:

❖ In rearing of *Bracon* in laboratory we observed the high hatching and adult emergence percentage due to proper feeding and maintenance

Commented [DR6]: Rewrite the inclusion with your major findings, implications and future research directives.

REFERENCES:

- Armes NJ, Jadhav DR, Bond GS, King ABS (1992) Insecticide resistance in *Helicoverpa armigera* in South India. Pestic Sci 34:355–364
- Farag, N. A., Ismail, I. A., Elbehery, H. H. A., Abdel-Rahman, R. S. and Abdel Raheem, M. A. (2015): Life table of *Bracon hebetor* Say (Hymenoptera: Braconidae) reared on different hosts. Intl. J. ChemTech. Res. 8, 123–130.
- Gabre, R. M., Adham, F. K. and Chi, H. (2004): Life table of *Chrysomya megacephala* (Fabricius) (Diptera: Calliphoridae). Acta Oecol. 27, 179–183.
- Kranthi KR, Jadhav DR, Kranthi S, Wanjari RR, Ali SS, Russel DA (2002) Insecticide resistance in five major insect pests of cotton in India. Crop Prot 21:449–460
- Muthukrishnan, J., Srinivasaperumal, S. and Selvan, M. S. (1995): Bioenergetics and life tables of selected parasitoids and predators. In: T. N. Ananthakrishnan (ed.): Biological Control of Social Forest and Plantation Crops Insects. Science Publishers: Lebanon. pp. 193–206
- Nair, M. K. (1993): *Opisina arenosella* Wik. The leaf eating caterpillar of coconut palm. Technical Bulletin No. 27, CPCRI, Kasaragod, India, 12 p.
- Narendran, T. C., Mohammed, U. V. K., Abdurahiman, U. C. and Kumar, V. V. S. (1980): Oviposition behaviour of *Bracon brevicornis* Wesmael (Hymenoptera: Braconidae). Agric. Res. J. Kerala, 18, 239–241.
- Rukshana, K. and Majeed, P. P. (2014): The effectiveness of biocontrol of *Opisina arenosella* (Lepidoptera: Oecophoridae) using *Bracon brevicornis* (Hymenoptera: Braconidae). J. Zool. Stud. 1, 1–3.

Commented [DR7]: Write, arrange and format the references, following the prescribed guidelines of the journal.