

Spatial evaluation of flood risk using Geospatial and Multi-Criteria Decision Analysis (MCDA): A case study in Obio-Akpor, Rivers State, Nigeria.

Abstract

This study investigates flood risk in Obio-Akpor, Rivers State, Nigeria, using a Geospatial and Multi-Criteria Decision Analysis (MCDA) approach, integrating Geographic Information Systems (GIS) and the Analytic Hierarchy Process (AHP). The primary objective was to assess flood risk by evaluating various environmental factors, including Digital Elevation Model (DEM), Land Use/Land Cover (LULC), slope, drainage density, flow accumulation, rainfall, geological type, Normalized Difference Water Index (NDWI), and curvature. The problem addressed was the need for an accurate flood risk assessment tool to aid urban planning and disaster management in flood-prone regions. Methodology involved utilizing ArcGIS 10.6 for spatial data processing and analysis, with data acquired from Shuttle Radar Topographic Mission (SRTM) DEM, Sentinel-2 imagery, geological surveys, and rainfall records. AHP was employed to assign weights to flood risk factors based on expert judgment, and the reclassified data was used to generate a flood risk map. The outcome revealed that 33% of the area is at low risk, 37% at moderate risk, 20% at high risk, and 10% at very high risk. The study concludes that DEM, LULC, and slope are significant factors influencing flood risk, while rainfall, geology, NDWI, and curvature play a lesser role. The findings emphasize the importance of elevation and land use in flood risk assessment, highlighting areas vulnerable to flooding. This research provides valuable insights for urban planners and policymakers, offering a robust tool for managing flood risks and improving resilience in flood-prone areas.

Commented [1]: These are data sources

Keyword: Flood Risk Assessment, Geospatial Analysis, (MCDA), (AHP), ArcGIS, Urban Flood

Commented [2]: why in parenthesis?

1. INTRODUCTION

Flood disasters have emerged as a significant global challenge, inflicting substantial economic losses, environmental degradation, and human suffering [1-3]. Developing countries, particularly those with rapid urbanization and inadequate infrastructure, are disproportionately vulnerable to these hydro-meteorological hazards [4,5]. Nigeria, with its burgeoning population and rapid urbanization, is no exception. The Niger Delta region, including Port Harcourt, the state capital of Rivers State, has experienced rapid urbanization and population growth, which have exacerbated flood risks due to the alteration of natural drainage systems and the encroachment upon floodplains. This phenomenon has led to increased vulnerability of urban properties and

infrastructure, necessitating effective flood risk assessment and management strategies [6]. To mitigate the adverse impacts of flooding, effective flood risk assessment is crucial. This involves identifying areas prone to flooding, evaluating potential consequences, and developing appropriate response strategies [7]. Traditional methods for flood risk assessment often rely on historical data and hydrological models, which may be limited in their ability to capture the complexities of urban environments [8]. Recent studies underscore the critical need for a spatial assessment of flood risk using advanced methodologies, such as Geospatial and Multi-Criteria Decision Analysis (MCDA), to inform decision-making and enhance disaster preparedness in flood-prone areas. Flood risk assessment involves evaluating both the likelihood of flooding and the potential consequences on human life, property, and the environment. It is essential to understand that flood risk is a function of hazard exposure, vulnerability, and adaptive capacity. The integration of geospatial data with MCDA provides a robust framework for analyzing complex flood risk scenarios by allowing for the consideration of multiple factors and stakeholder preferences [9]. This approach not only facilitates the identification of high-risk areas but also supports the development of targeted mitigation strategies that can significantly reduce flood impacts. Geospatial technologies, including Geographic Information Systems (GIS) and remote sensing, provide valuable tools for collecting, analyzing, and visualizing spatial data related to flood risk factors [10]. These technologies enable the creation of detailed maps and models that can be used to identify areas with high flood vulnerability [11,12]. MCDA, on the other hand, offers a structured framework for incorporating multiple criteria, often conflicting, into the decision-making process [9,13]. By combining geospatial data with MCDA, it is possible to evaluate the relative importance of different flood risk factors and identify areas with the highest overall risk [14]. **Recent research has highlighted** the effectiveness of utilizing Geographic Information Systems (GIS) in conjunction with MCDA to assess flood vulnerability and risk. Ugwu et al. [6] conducted a comprehensive spatial assessment of flood vulnerability in Port Harcourt, revealing that a significant proportion of developed properties are situated in areas of moderate to high flood vulnerability. Their findings indicated that approximately 79% of developed properties fall within moderately vulnerable zones, emphasizing the urgent need for proactive flood management interventions in the metropolis [6]. This study serves as a critical reference point for understanding the spatial dynamics of flood risk in the region. Moreover, the application of MCDA methodologies allows for the incorporation of diverse datasets, including hydrological, topographical, and socio-economic factors, into the flood risk assessment process. This multidimensional analysis is crucial for capturing the complex interactions between various flood

Commented [3]: what are the examples of such studies that applied MCDA? Name a few examples and cite them here.

The following are my suggestions:

1. Ihinegbu and Ogunwumi 2022
- <https://link.springer.com/article/10.1007/s40808-021-01197-2>
2. Ogunwumi et al 2021
- https://scholar.google.com/citations?view_op=view_citation&hl=en&user=E7pFTB8AAAAJ&citation_for_view=E7pFTB8AAAAJ:d1gkVwhDpl0C

Formatted: Highlight

risk drivers, thereby enabling more informed decision-making. For example, recent studies have demonstrated the utility of MCDA in identifying flood hazard drivers and vulnerability factors, which can then be mapped to produce comprehensive flood risk profiles for urban areas [15,16]. Such methodologies not only enhance the accuracy of flood risk assessments but also promote stakeholder engagement by incorporating local knowledge and preferences into the decision-making process. In the context of Port Harcourt, the integration of geospatial technologies and MCDA is particularly relevant given the city's unique geographical and socio-economic characteristics. The Niger Delta region, where Port Harcourt is located, is prone to seasonal flooding due to its low-lying topography, high rainfall, and inadequate drainage infrastructure. Consequently, the city faces significant challenges related to flood management, including the need for effective urban planning, infrastructure development, and community engagement in flood risk reduction initiatives. This study aims to conduct a spatial assessment of flood risk in Port Harcourt using a geospatial and MCDA approach. By analyzing various flood risk factors and their spatial distribution, the research seeks to identify areas most at risk of flooding and provide recommendations for mitigating flood impacts. The findings will contribute to the existing body of knowledge on flood risk management in Nigeria and provide valuable insights for policymakers, urban planners, and disaster management authorities. In conclusion, the combination of geospatial analysis and MCDA represents a powerful tool for understanding and addressing flood risks in urban environments like Port Harcourt. As the impacts of climate change and urbanization continue to intensify, the need for comprehensive flood risk assessments becomes increasingly critical. This study will not only enhance our understanding of flood dynamics in Port Harcourt but also support the development of effective strategies for flood risk reduction and resilience building in the region.

Commented [4]: state the paper's structure here

2. LOCATION AND ACCESSIBILITY OF THE STUDY AREA

Obio-Akpor is part of Port Harcourt city located in Rivers state, south eastern Nigeria, situated at the mouth of River Bonny and lies between latitude 4°43'0"N – latitude 4°57'3"N and longitude 6°0'0"E – longitude 7°5'54"E (Figures 1a and 1b). It is the capital of Rivers state which boasts Nigeria's largest oil and gas reserves making it a city of great economic importance [17]. Port Harcourt is Nigeria's fourth largest city after Lagos (Southwest), and regional centres Kano (Northwest) and Ibadan (Southwest). The city is positioned between the Dockyard creek and the Amadi creek at an average altitude of about 12m above mean sea level.

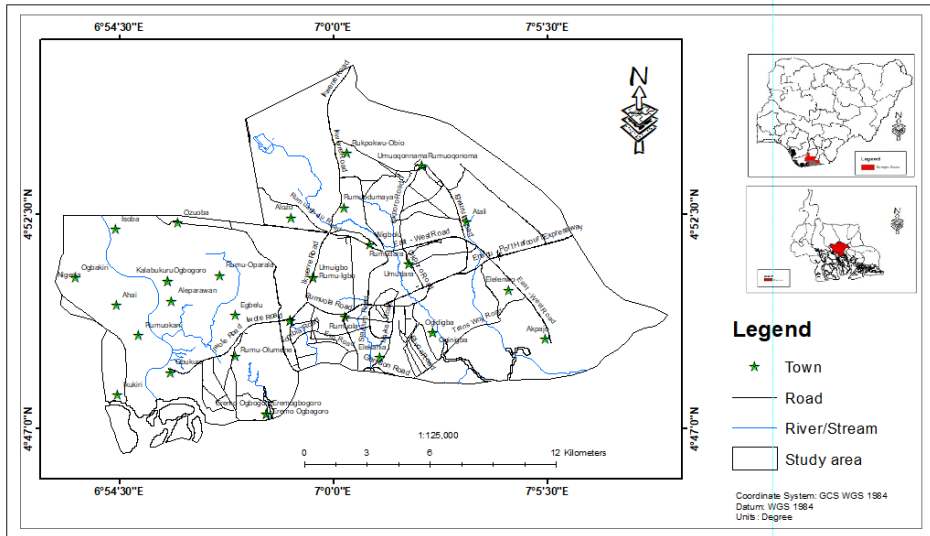


Figure 1a: Study area map

The Niger Delta is a geological wonder, being one of the world largest river-dominated deltas. Its formation is closely linked to the interplay of tectonic activity, sedimentation, and sea-level changes [18]. The delta foundation is within the Benue Trough, a rift basin formed during the Cretaceous period. As the Atlantic Ocean opened, extensional forces acted on the African plate, creating the structural framework for the delta. Over millions of years, the Niger River and its tributaries deposited vast amounts of sediment, forming the delta's substantial thickness [19]. The delta stratigraphy comprises three main lithofacies: the marine claystones and shales of the Akata Formation, the alternating sandstones and shales of the Agbada Formation, and the overlying alluvial sands of the Benin Formation [20,21]. These units display a regressive sequence, indicating a gradual shift from marine to continental environments [18, 22]. The Niger Delta is noted for its abundant hydrocarbon resources, primarily from the organic-rich shales of the Akata Formation. The porous sandstones of the Agbada Formation act as excellent reservoirs, while the overlying shales provide effective seals, creating optimal conditions for oil and gas accumulation [23].

3. MATERIALS AND METHODS

This study employed a combination of Geographic Information Systems (GIS) and Analytical Hierarchy Process (AHP) to assess flood risk in the chosen region. The hardware used included a standard HP Pavilion laptop with sufficient processing power, RAM, and storage (HP Pavilion dv6 Notebook PC with Intel(R) Core(TM) i5-2410M CPU @ 2.30GHz, 6.00GB RAM and 500GB hard drive). Additionally, a standard color printer (Hewlett Packard), external keyboard, and mouse were used. ArcGIS 10.6: This GIS software was the primary tool for image processing, spatial analysis, querying, simulations, and other analyses required for the flood risk assessment. It facilitated data capture, storage, analysis, and management with spatial reference to the study area.

Commented [5]: not necessary

Commented [6]: not necessary to report this

Data Acquisition

The following spatial data were collected for the analysis: The Shuttle Radar Topographic Mission (SRTM) DEM was obtained from the official website of the United States Geological Survey (USGS) (<http://www.earthexplorer.usgs.gov/>) to be used in flood risk assessment. The boundary of the study area was defined using an administrative map, also obtained from the USGS website. High-resolution satellite imagery from Sentinel-2 was downloaded from the USGS EarthExplorer website for use in the flood risk assessment. Geological data for the study area were acquired from the Nigeria Geological Survey, and historical rainfall data were obtained from the Nigerian Meteorological Agency (NIMET).

Methodology

The core methodology involved GIS analysis and the Analytical Hierarchy Process (AHP) technique:

Commented [7]: GIS is not a methodology, but a tool. I think MCDA is your methodology.

Commented [8R7]: and AHP

GIS Analysis: ArcGIS was utilized to integrate information from various sources, including maps, satellite images, and the Digital Elevation Model (DEM). This process generated flood conditioning factor maps such as rainfall, slope, elevation, land use/land cover, drainage density, NDWI (Normalized Difference Water Index), flow accumulation, curvature, and geology.

Commented [9]: This is not a methodology but data analytical method. Same with weighted overlay

Reclassification: The nine flood-influencing factors were reclassified based on their relative importance to flood risk. This reclassified data served as input for the flood risk assessment map.

Multi-Criteria Evaluation (MCE) and Analytical Hierarchy Process (AHP): The AHP method employed pair-wise comparisons to weigh the relative influence of each factor on flood risk [24]. This approach facilitated judgments and calculations. The AHP model assigned weights and ranks to each flood factor and its classes (1-5) based on their contribution to flood risk in the study area. For some factors, the ranking was reversed, with the highest impact category receiving the highest weight. The AHP extension in ArcGIS 10.6 was used for these calculations. The weight W_i of each factor i was calculated using the formula:

$$W_i = \frac{A_i}{\sum_{i=1}^n A_i} \quad \text{Eq. 1}$$

where A_i represents the eigenvalue of the factor i obtained from the pairwise comparison matrix, and n is the total number of factors.

Weighted Overlay Method: This method involved assigning weights to each raster layer based on its importance in flood risk. The values in each raster were then reclassified on a common scale of 1 to 5. Subsequently, the raster layers were overlaid, with each cell's preference value multiplied by its layer weight. The resulting values were summed to derive a final preference value for each cell. The weighted overlay formula is:

$$R_j = \sum_{i=1}^n W_i * S_{ij} \quad \text{Eq. 2}$$

where R_j is the risk score for cell j , W_i is the weight of factor i , and S_{ij} is the score of factor i in cell j . Finally, these values were used to create a flood risk map.

Flood Risk Criteria Ranking: Nine criteria were identified as crucial for flood risk assessment. These criteria were reclassified, and a linear function was used to assign preference values (1-5) to different classes within each criterion. The preference values ranged from 1 (low risk) to 5 (high risk). This combined approach of GIS analysis and AHP allowed for a comprehensive assessment of flood risk in the chosen region.

Commented [10]: This is your major methodology. Here, I expect you to detail MCE and AHP as well as state how they function, their strengths and weaknesses.

Also cite these studies and more that looked at MCE:

The following are my suggestions:

1. Ihinegbu and Ogunwumi 2022 - <https://link.springer.com/article/10.1007/s40808-021-01197-2>
2. Ogunwumi et al 2021 - https://scholar.google.com/citations?view_op=view_citation&hl=en&user=E7pFTB8AAAAJ&citation_for_view=E7pFTB8AAAAJ:d1gkVwhDpl0C

4. RESULTS AND DISCUSSION

4.1 Results

Utilizing various parameters such as curvature, drainage density, digital elevation model (DEM), flow accumulation, geological type, land use/land cover, Normalized Difference Water Index (NDWI), rainfall distribution, and slope degree. The results are presented below with findings from Tables 1 to 9 and Figure 2a.

Table 1: Curvature description level on flood risk

Rate of curve	Ranking	Unified Value	Flood Risk Class
-4.09 – -0.55	1	20	Very low
-0.54 – -0.23	2	40	Low
-0.22 – 0.08	3	60	Moderate
0.09 – 0.39	4	80	High
0.4 – 7.34	5	100	Very High

Table 2: Drainage Density description level on flood risk

Drainage Density (km ²)	Ranking	Unified Value	Flood Risk Class
0 – 198.04	1	20	Very low
198.05 – 396.08	2	40	Low
396.09 – 594.12	3	60	Moderate
594.13 – 792.16	4	80	High
792.17 – 990.2	5	100	Very High

Table 3: Digital Elevation Model description level on flood risk

Digital Elevation Model (m)	Ranking	Unified Value	Flood Risk Class
-17 – 5	5	100	Very High
5.01 – 11	4	80	High
11.01 – 17	3	60	Moderate
17.01 – 22	2	40	Low
22.01 – 43	1	20	Very Low

Table 4: Flow Accumulation description level on flood risk

Flow Accumulated Value	Ranking	Unified Value	Flood Risk Class
0 – 2,449.52	1	20	Very low
2,449.53 – 10,070.24	2	40	Low

10,070.25 – 22,590	3	60	Moderate
22,590.01 – 38,647.95	4	80	High
38,647.96 – 69,403	5	100	Very High

Table 5: Geological type description level on flood risk

Vegetation type	Ranking	Unified Value	Flood Risk Class
Coastal plain sands	1	20	Very low
Deltaic basins and tidal flats	2	40	Low
Mangrove swamps	3	60	Moderate
Recent alluvium	4	80	High
Recent alluvium and coastal plain sands	5	100	Very High

Table 6: Land use/ land cover description level on flood risk

Land use/land cover	Ranking	Unified Value	Flood Risk Class
Vegetation	1	25	Low
Bare land	2	50	Moderate
Built up area	3	75	High
Water bodies	4	100	Very High

Table 7: NDWI description level on flood risk

Index Value	Ranking	Unified Value	Flood Risk Class
-0.7 – 0.06	1	20	Very low
0.07 – 0.11	2	40	Low
0.12 – 0.19	3	60	Moderate
0.2 – 0.3	4	80	High
0.31 – 0.43	5	100	Very High

Table 8: Rainfall distribution description level on flood risk

Rainfall distribution (mm)	Ranking	Unified Value	Flood Risk Class
16.32 – 127.71	1	20	Very low
127.72 – 179.57	2	40	Low
179.58 – 203.71	3	60	Moderate
203.72 – 255.57	4	80	High
255.58 – 366.96	5	100	Very High

Table 9: Slope description level on flood risk

Slope (Degree)	Ranking	Unified Value	Flood Risk Class
0 – 10	2	100	Very high
10.01 – 25	1	50	High

Figure 2a: Curvature, drainage density, digital elevation model (DEM), flow accumulation, geological type, land use/land cover, Normalized Difference Water Index (NDWI), rainfall distribution

4.2 Discussion

Commented [13]: why repeating this sub-heading

Flood risk assessment is critical for urban planning and disaster management, especially in flood-prone areas like Port Harcourt, Rivers State, Nigeria. This study employs a Geospatial and Multi-Criteria Decision Analysis (MCDA) approach to assess flood risk, utilizing various parameters such as curvature, drainage density, digital elevation model (DEM), flow accumulation, geological type, land use/land cover, Normalized Difference Water Index (NDWI), rainfall distribution, and slope degree. The results are discussed in detail and compared with other recent studies to validate the findings.

4.2.1 Reclassification

Reclassification is a critical step in flood risk assessment, allowing for the transformation of raw spatial data into a format that highlights the relative importance of different flood-influencing factors. In this study, nine factors were reclassified: curvature, drainage density, digital elevation model (DEM), flow accumulation, geological type, land use/land cover (LULC), Normalized Difference Water Index (NDWI), rainfall distribution, and slope degree (Figure 2b). Each factor was assigned a weight based on its contribution to flood risk, which was then used to develop the flood risk assessment map.

Commented [14]: this is a part of the methodology and shouldn't be here

Curvature is an important geomorphological factor influencing flood risk. Table 1 illustrates the unified preference values for curvature, showing that areas with a curvature range of -4.09 to -0.55 have a very low flood risk, while areas with a curvature range of 0.4 to 7.34 have a very high flood risk. This trend is consistent with findings by Otokiti et al., [25] who noted that higher curvature values are associated with increased surface runoff and flood potential [26].

Drainage density is a measure of the total length of streams and rivers per unit area, affecting flood dynamics. Table 2 shows that areas with lower drainage density (0 – 198.04 km²) exhibit very low flood risk, whereas areas with higher drainage density (792.17 – 990.2 km²) have a very high flood risk. This relationship aligns with the study by which highlighted that regions with higher drainage density are more susceptible to flooding due to higher runoff potential.

Commented [15]: part of methods

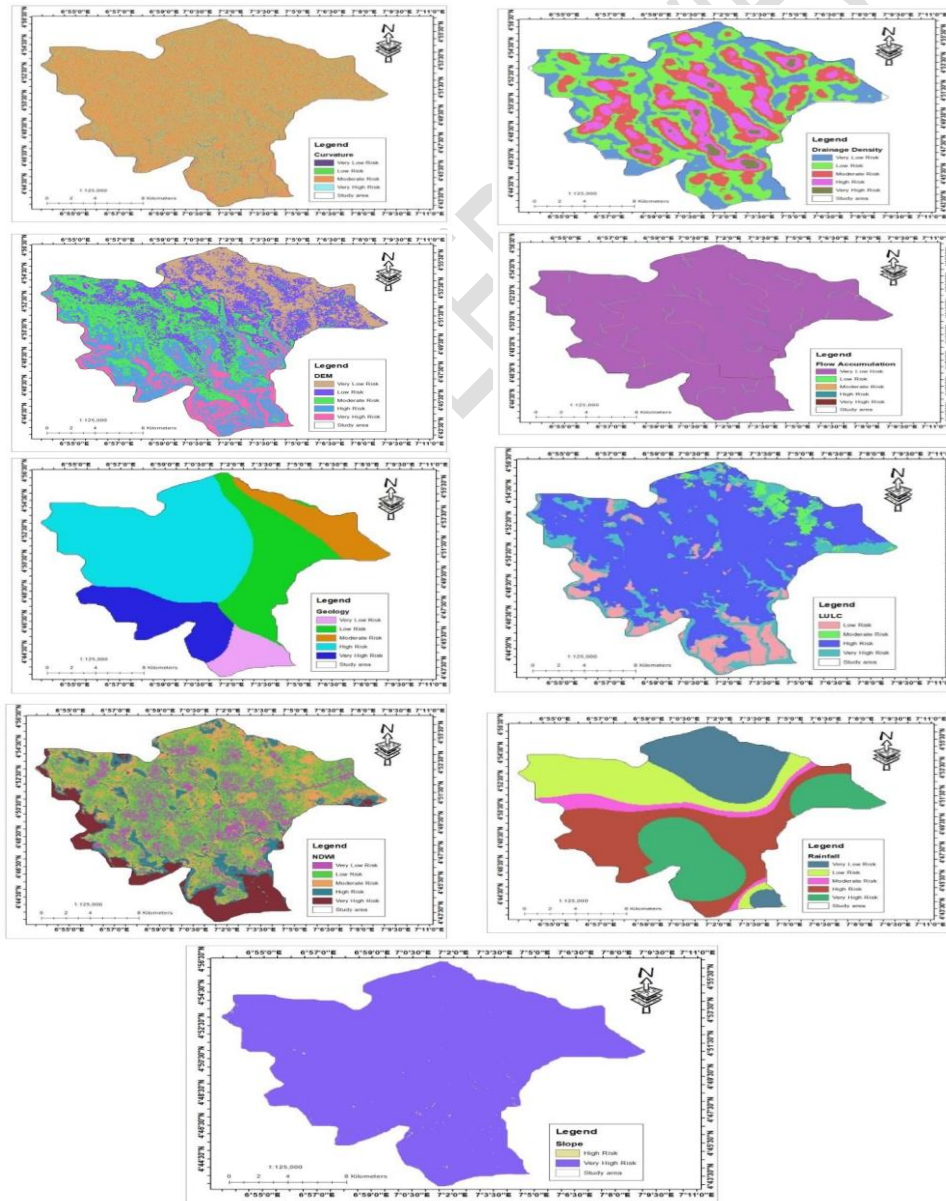


Figure 2b: Reclassify Curvature, drainage density, digital elevation model (DEM), flow accumulation, geological type, land use/land cover, Normalized Difference Water Index (NDWI), rainfall distribution

DEM is crucial for understanding topographic variation and flood risk. As indicated in Table 3, areas with lower elevation (-17 to 5 m) have a very high flood risk, while higher elevation areas (22.01 to 43 m) have very low flood risk. This observation is supported by Ugwu et al. [6] and Sahraei et al [27] who found that low-lying areas are more prone to flooding due to limited drainage and higher water accumulation [28]

Flow accumulation reflects the convergence of water flow in a particular area. According to Table 4, regions with lower flow accumulation (0 – 2,449.52) have very low flood risk, whereas regions with higher flow accumulation (38,647.96 – 69,403) have very high flood risk. These results are in line with those of Kazakis et al [29] which demonstrated that areas with higher flow accumulation are more likely to experience flooding due to greater water convergence [30].

Geological characteristics influence flood risk due to varying permeability and water retention properties. Table 5 indicates that coastal plain sands exhibit very low flood risk, whereas recent alluvium and coastal plain sands have very high flood risk. Similar findings were reported by Ghosh and Kar [31] who identified that alluvial regions are more flood-prone due to their high permeability and water retention capacity [32].

Land use and cover types significantly affect flood risk. Table 6 reveals that areas with vegetation have low flood risk, while built-up areas and water bodies have high to very high flood risk. This trend is corroborated by Ugwu et al. [6] and Bui et al [33] who noted that urbanization and the presence of water bodies increase flood susceptibility due to reduced infiltration and increased surface runoff [32].

NDWI is used to identify water content in vegetation and soil. Table 7 shows that areas with higher NDWI values (0.31 – 0.43) have very high flood risk, while areas with lower NDWI values (-0.7 – 0.06) have very low flood risk. This observation is consistent which found that higher NDWI values are associated with increased soil moisture and flood risk [30].

Rainfall intensity and distribution are critical factors in flood risk assessment. Table 8 demonstrates that areas with higher rainfall distribution (255.58 – 366.96 mm) have very high flood risk, while areas with lower rainfall distribution (16.32 – 127.71 mm) have very low flood risk. This relationship aligns with the findings of Chapi et al., [34] and Wu et al. [35] who emphasized that regions with higher rainfall are more susceptible to flooding [30]

Slope degree affects the velocity and volume of runoff. Table 9 indicates that areas with lower slopes (0 – 10 degrees) have very high flood risk, whereas steeper slopes (10.01 – 25 degrees) have high flood risk. This trend is supported by Pham et al. [36] and Eteh et al., [37], who found that flatter areas are more prone to flooding due to slower water movement and greater accumulation.

4.2.2 Development of the Pairwise Comparison Matrix

The Analytic Hierarchy Process (AHP) was employed to develop a pairwise comparison matrix. This involved expert judgment to assign relative importance to various flood-inducing factors based on the Saaty scale, ranging from 1 (equal importance) to 9 (extremely important) as shown in Tables 10 and 11. The factors considered included Digital Elevation Model (DEM), Land Use/Land Cover (LULC), Slope, Drainage Density (DD), Flow Accumulation, Rainfall, Geology, Normalized Difference Water Index (NDWI), and Curvature. This method facilitates the comparison of criteria by assigning a numerical value to the importance of one criterion over another.

Table 10: The intensity of pair wise comparison ranking [38]

The intensity of pair wise comparison	Interpretation
1	Equal importance
2	Equal to Moderately importance
3	Moderately to the strong importance
4	Moderate to the strong importance
5	Strong importance
6	Strong to the very strong importance
7	Very strong importance
8	Very to the extremely importance
9	Extremely importance

Table 11: Pairwise comparison of a 9-point continuous scale

Criterion	DEM	LULC	Slope	DD	Flow Acc	Rainfall	Geology	NDWI	Curvature
DEM	1								
LULC	1/2	1							
Slope	1/3	1/2	1						
DD	1/4	1/3	1/2	1					
Flow Acc	1/5	1/4	1/3	1/2	1				
Rainfall	1/6	1/5	1/4	1/3	1/2	1			
Geology	1/7	1/6	1/5	1/4	1/3	1/2	1		
NDWI	1/8	1/7	1/6	1/5	1/4	1/3	1/2	1	
Curvature	1/9	1/8	1/7	1/6	1/5	1/4	1/3	1/2	1
	2.8	4.7	7.5	11.3	16.3	22.1	28.8	36.5	45.0

4.2.3 Pairwise Comparison and Eigenvector Weight Calculation

Using the pairwise comparison matrix, the eigenvector weights for each criterion were calculated. Table 12 presents these weights, showing the relative importance of each factor in determining flood risk in Port Harcourt. The consistency ratio (CR) was found to be 0.03, indicating that the comparisons were consistent and acceptable. The calculated weights were then used to derive the relative importance percentages for each criterion, as detailed in Table 13.

Table 12: Pair wise comparison matrix

	DEM	LULC	Slope	DD	Flow Acc	Rainfall	Geology	NDWI	Curvature	Eigenvector weight	Percentage (%)
DEM	0.35	0.43	0.40	0.35	0.31	0.27	0.24	0.22	0.20	0.31	30.85
LULC	0.18	0.21	0.27	0.27	0.25	0.23	0.21	0.19	0.18	0.22	21.92
Slope	0.12	0.11	0.13	0.18	0.18	0.18	0.17	0.16	0.16	0.15	15.49
DD	0.09	0.07	0.07	0.09	0.12	0.14	0.14	0.14	0.13	0.11	10.92
Flow Acc	0.07	0.04	0.03	0.03	0.06	0.09	0.10	0.11	0.11	0.07	7.26
Rainfall	0.06	0.04	0.03	0.03	0.03	0.05	0.07	0.08	0.09	0.05	5.34
Geology	0.05	0.04	0.03	0.02	0.02	0.02	0.03	0.05	0.07	0.04	3.71
NDWI	0.04	0.03	0.02	0.02	0.02	0.02	0.02	0.03	0.04	0.03	2.60
Curvature	0.04	0.03	0.02	0.01	0.01	0.01	0.01	0.01	0.02	0.02	1.90
Total										1	100

Consistency ratio = 0.03, consistency is acceptable

Flood Influencing Factors

The results indicate that the Digital Elevation Model (DEM) is the most significant factor, with a relative weight of 30.85%. This is followed by Land Use/Land Cover (LULC) at 21.92% and Slope at 15.49%. Drainage Density (DD) and Flow Accumulation have weights of 10.92% and 7.26%, respectively. Rainfall, Geology, Normalized Difference Water Index (NDWI), and Curvature are less influential, with relative weights of 5.34%, 3.71%, 2.60%, and 1.90%, respectively.

Table 13: Flood influencing factor relative weight percent

S/N	Parameters	Relative Weight (%)
1	Digital Elevation Model	30.85
2	Landuse/Landcover	21.92
3	Slope	15.49
4	Drainage Density	10.92
5	Flow Accumulation	7.26
6	Rainfall	5.34
7	Geology	3.71
8	NDWI	2.60
9	Curvature	1.90

Commented [16]: why use a different font type here

4.2.4 Spatial Assessment of Flood Risk

The flood risk map (Figure 3 and 4) generated from the analysis reveals the spatial distribution of flood risk in Port Harcourt. The map categorizes areas into four flood risk classes: Low, Moderate, High, and Very High. The final flood assessment results, shown in Table 14, indicate that 33% of the area is at low risk, 37% at moderate risk, 20% at high risk, and 10% at very high risk.

Table 14: Final flood assessment results

Flood Risk Class	Area (km ²)	Percentage (%)
Low	35.97	33

Moderate	40.33	37
High	21.8	20
Very High	10.9	10

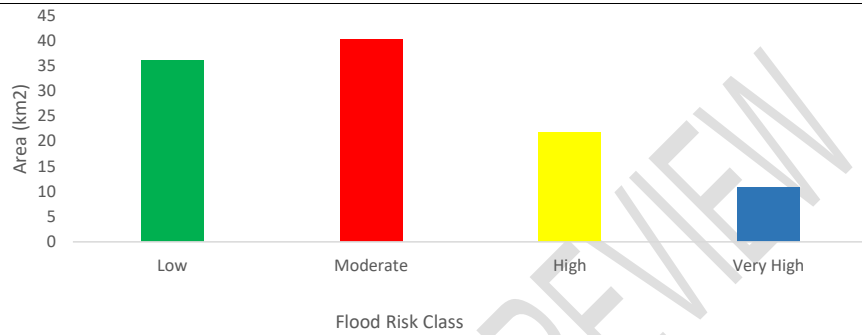


Figure 3: bar chart of flood assessment

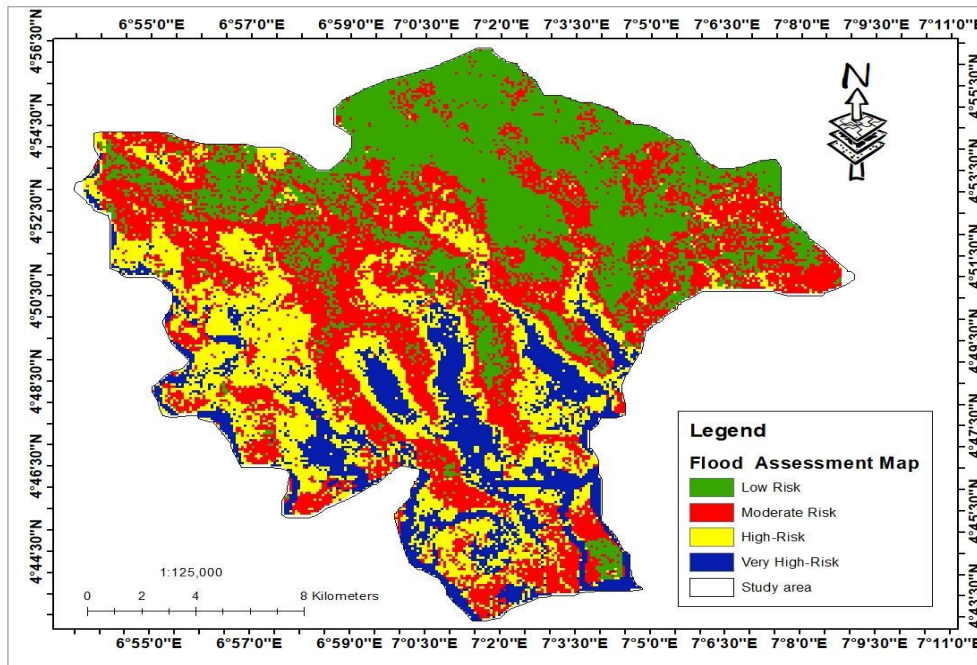


Figure 4: Flood assessment map

The spatial assessment of flood risk using the MCDA approach provides a comprehensive understanding of flood-prone areas in Port Harcourt. The high influence of DEM indicates that elevation variations significantly affect flood risk. Low-lying areas are more susceptible to flooding due to their inability to effectively drain excess water. Similarly, LULC and slope are critical factors, as they influence surface runoff and water retention. The moderate to high importance of DD and flow accumulation indicates that areas with dense drainage networks and significant water flow accumulation are more likely to experience flooding. Rainfall, though a direct contributor to flood events, has a lower relative weight, possibly due to the uniformity of precipitation patterns in the study area. Geology, NDWI, and curvature have minimal impact on flood risk, reflecting their lesser role in the specific context of Port Harcourt.

5. CONCLUSION

Flood risk assessment is essential for urban planning and disaster management, particularly in flood-prone areas such as Port Harcourt, Rivers State, Nigeria. This study utilized a Geospatial and Multi-Criteria Decision Analysis (MCDA) approach, incorporating factors like curvature, drainage density, digital elevation model (DEM), flow accumulation, geological type, land use/land cover (LULC), Normalized Difference Water Index (NDWI), rainfall distribution, and slope degree. The findings highlight that the DEM is the most significant factor affecting flood risk, with a relative weight of 30.85%. This indicates that low-lying areas are more prone to flooding due to poor drainage and higher water accumulation. LULC (21.92%) and slope (15.49%) also play crucial roles, influencing surface runoff and water retention. Areas with dense drainage networks and significant flow accumulation exhibit higher flood risk, aligning with the moderate to high importance of these factors. The study found that curvature, NDWI, and geology have minimal impacts, suggesting their lesser role in this context. The reclassification of these factors allowed for the development of a detailed flood risk map, categorizing areas into low, moderate, high, and very high risk. The results show that 33% of Port Harcourt is at low risk, 37% at moderate risk, 20% at high risk, and 10% at very high risk. The analysis validates previous studies, confirming that areas with higher curvature, drainage density, lower elevation, and greater flow accumulation are more susceptible to flooding. Additionally, it was observed that built-up areas and water bodies have high flood risk due to reduced infiltration and increased runoff. Rainfall

intensity, despite being a direct contributor to flood events, showed a lower relative weight due to uniform precipitation patterns in the region. Therefore, this comprehensive flood risk assessment using MCDA and geospatial techniques provides valuable insights for urban planners and disaster management authorities. The findings underscore the need for targeted interventions in high-risk areas to mitigate flood impacts, emphasizing the critical roles of elevation, land use, and drainage characteristics in flood risk management.

References

- [1].Kundzewicz, Zbigniew & Buda, Su & Wang, Yanjun & Xia, Jun & Huang, Jinlong & Tong, Jiang. (2019). Flood risk and its reduction in China. *Advances in Water Resources*. 130. 10.1016/j.advwatres.2019.05.020.
- [2].Desmond, Eteh & Oborie, Ebiegeberi. (2022). Hazard Flood Mapping and Monitory in Parts of the Niger Delta Region Using Sentinel 1 Synthetic Aperture Radar. *Sumerianz Journal of Scientific Research*. 44-52. 10.47752/sjsr.52.44.52.
- [3].Eteh, Desmond Rowland and Okechukwu Okpobiri. "Floodplain mapping and risks assessment of the Orashi River using Remote Sensing and GIS in the Niger Delta Region, Nigeria." *Journal of Geographical Research* (2021): n. pag.
- [4].[IPCC, 2021](#) Climate Change 2021: the Physical Science Basis. Contribution of Working Group I to the Sixth Assessment Report of the Intergovernmental Panel on Climate Change
- [5].Cambridge University Press In Press (2021) [IPCC, 2022](#) IPCC Sixth Assessment Report, 2022. Climate change 2022: Impacts, adaptation and vulnerability (2022)
- [6].Ugwu, M. O., Elenwo, E. I., Obafemi, A. A., & Eludoyin, O. S. (2022). Spatial Assessment of Flood Vulnerability of Developed Properties in Port Harcourt Metropolis, Rivers State, Nigeria. *Journal of Geography, Environment and Earth Science International*, 26(11), 47-61. doi:10.9734/jgeesi/2022/v26i11645.
- [7].Di Baldassarre, G., Kemerink, J. S., Kooy, M., & Brandimarte, L. (2014). Floods and societies: The spatial distribution of water-related disaster risk and its dynamics. *WIREs Water*, 1(2), 133–139. <https://doi.org/10.1002/wat2.1015>

- [8].Nkwunonwo, Ugonna & Whitworth, Malcolm & Baily, Brian. (2020). A review of the current status of flood modelling for urban flood risk management in the developing countries. *Scientific African*. 7. e00269. 10.1016/j.sciaf.2020.e00269.
- [9].Taherizadeh, M., Niknam, A., Nguyen-Huy, T. et al. Flash flood-risk areas zoning using integration of decision-making trial and evaluation laboratory, GIS-based analytic network process and satellite-derived information. *Nat Hazards* 118, 2309–2335 (2023). <https://doi.org/10.1007/s11069-023-06089-5>
- [10]. Merga, B.B., Mamo, F.L., Moisa, M.B. et al. Assessment of flood risk by using geospatial techniques in Wabi Shebele River Sub-basin, West Hararghe Zone, southeastern Ethiopia. *Appl Water Sci* 13, 214 (2023). <https://doi.org/10.1007/s13201-023-02019-9>
- [11]. Desmond Rowland Eteh, Samuel Oseji, Erazua Iziegbe , Osi Nnamdi Claude, Abaye Ebinyo Oreikio. "Water Quality Assessment Using GIS Based Multi-Criteria Evaluation (MCE) and Analytical Hierarchy Process (AHP) Methods in Yenagoa Bayelsa State, Nigeria". *International Journal of Advanced Engineering Research and Science*, vol. 10, no. 4, Apr. 2023.
- [12]. Bhattacharjee, Sutapa & Kumar, Pramod & Thakur, Praveen & Gupta, Kshama. (2021). Hydrodynamic modelling and vulnerability analysis to assess flood risk in a dense Indian city using geospatial techniques. *Natural Hazards*. 105. 1-29. 10.1007/s11069-020-04392-z.
- [13]. Eteh Desmond Rowland, Francis Omonefe, Jonathan Lise Erebi. (2021-01-18). "Site Suitability Study for Solid Waste Dumpsite Selection Using Geospatial-Based Multi-Criteria Analysis inYenagoa, Bayelsa StateNigeria." *Volume 4*, 1, 1-12
- [14]. Koralay, N., Kara, Ö. Assessment of flood risk in Söğütlü stream watershed of Trabzon province in Turkey using geographic information systems and analytic hierarchy process approach. *Nat Hazards* (2024). <https://doi.org/10.1007/s11069-024-06594-1>
- [15]. Aladejana, O.O., Ebijuoworih, E.J. Flood risk assessment in Kogi State Nigeria through the integration of hazard and vulnerability factors. *Discov Geosci* 2, 31 (2024). <https://doi.org/10.1007/s44288-024-00036-y>

- [16]. Osman, S.A., Das, J. GIS-based flood risk assessment using multi-criteria decision analysis of Shebelle River Basin in southern Somalia. *SN Appl. Sci.* 5, 134 (2023). <https://doi.org/10.1007/s42452-023-05360-5>
- [17]. Orazulike, N. C., Justina, J. O., Christopher, C. C., Tamunomie, K. N., & Samuel, A. U. (2017). A 3-year retrospective review of mortality in women of reproductive age in a tertiary health facility in Port Harcourt, Nigeria. *International journal of women's health*, 9, 769–775. <https://dx.doi.org/10.2147/IJWH.S138052>.
- [18]. Reijers TJ. Stratigraphy and sedimentology of the Niger Delta. *Geologos*. 2011;17:133-162.
- [19]. Tuttle LWM, Charpentier RR, Brownfield EM. The Niger Delta Petroleum System: Niger Delta Province, Nigeria Cameroon and Equatorial Guinea, Africa. US Geological Survey Open-File Report 99-50-H. Denver: US Geological Survey; 1999. p. 70.
- [20]. Short KC, Stauble AJ. Outline of Geology of Niger Delta. *AAPG Bull.* 1967;51:761-779.
- [21]. Ngah S, Eze C. Typical Hydraulic Properties of Deep Aquifers of Niger Delta from Pumping Test Data. *J Geosci Environ Prot.* 2017;5:139-148. doi:10.4236/gep.2017.511010.
- [22]. Wiener RW, Mann MG, Angelich MT, Molyneux JB. Mobile Shale in the Niger Delta: Characteristics, Structure, and Evolution. *AAPG Memoir.* 2010;145-161.
- [23]. Reyment RA. Aspects of the geology of Nigeria—The Stratigraphy of the Cretaceous and Cenozoic Deposits. Ibadan: Ibadan University Press; 1965. p. 133.
- [24]. AlAli, Abdulrahman Mubarak, Abdelrahim Salih, and Abdalhaleem Hassaballa. 2023. "Geospatial-Based Analytical Hierarchy Process (AHP) and Weighted Product Model (WPM) Techniques for Mapping and Assessing Flood Susceptibility in the Wadi Hanifah Drainage Basin, Riyadh Region, Saudi Arabia" *Water* 15, no. 10: 1943.
- [25]. Otokiti, K., Akinola, O., Adeniji, K. (2020). Geospatial mapping of flood risk in the coastal megacity of Nigeria. *American Journal of Geophysics, Geochemistry, and Geosystems.* 5(4), 129-138.
- [26]. Vojtek, Matej & Vojteková, Jana. (2016). Flood hazard and flood risk assessment at the local spatial scale: a case study. *Geomatics, Natural Hazards and Risk.* 7. 1973-1992. 10.1080/19475705.2016.1166874.

- [27]. Sahraei, Roya & Kanani-Sadat, Yousef & Safari, Abdolreza & Homayouni, Saeid. (2023). Flood Susceptibility Modelling Using Geospatial-Based Multi-Criteria Decision Making in Large Scale Areas. X-4/W1-2022. 677-683. 10.5194/isprs-annals-X-4-W1-2022-677-2023.
- [28]. Ikram, Qiyamud Din & Jamalzi, Abdur Rashid & Hamidi, Abdur Rahim & Ullah, Irfan & Shahab, Muhmmad. (2023). Flood risk assessment of the population in Afghanistan: A spatial analysis of hazard, exposure, and vulnerability. *Natural Hazards Research*. 10.1016/j.nhres.2023.09.006
- [29]. Kazakis, Nerantzis & Kougias, Ioannis & Patsialis, Thomas. (2015). Assessment of flood hazard areas at a regional scale using an index-based approach and Analytical Hierarchy Process: Application in Rhodope–Evros region, Greece. *Science of The Total Environment*. 538. 555–563. 10.1016/j.scitotenv.2015.08.055.
- [30]. Kelly, Matthew, Imogen Schwarz, Mark Ziegelaar, Andrew B. Watkins, and Yuriy Kuleshov. 2023. "Flood Risk Assessment and Mapping: A Case Study from Australia's Hawkesbury-Nepean Catchment" *Hydrology* 10, no. 2: 26.
- [31]. Ghosh, S., & Kar, S. K. (2018). "Application of analytical hierarchy process (AHP) for flood risk assessment: a case study in Malda district of West Bengal, India," *Natural Hazards: Journal of the International Society for the Prevention and Mitigation of Natural Hazards*, Springer;International Society for the Prevention and Mitigation of Natural Hazards, vol. 94(1), pages 349-368, October.
- [32]. Efraimidou, E., Spiliotis, M. A GIS-Based Flood Risk Assessment Using the Decision-Making Trial and Evaluation Laboratory Approach at a Regional Scale. *Environ. Process*. 11, 9 (2024). <https://doi.org/10.1007/s40710-024-00683-w>
- [33]. Bui, Dieu & Pradhan, Biswajeet & Nampak, Haleh & Bui, Quang-Thanh & Tran, Quynh-An & Phi, Quoc. (2016). Hybrid Artificial Intelligence Approach Based on Neural Fuzzy Inference Model and Metaheuristic Optimization for Flood Susceptibility Modelling in A High-Frequency Tropical Cyclone Area using GIS. *Journal of Hydrology*. 540. (Accepted, in press). 10.1016/j.jhydrol.2016.06.027.
- [34]. Chapi, K., Singh, V. P., Shirzadi, A., Shahabi, H., Bui, D. T., Pham, B. T., & Khosravi, K. (2017). A Novel Hybrid Artificial Intelligence Approach for Flood

Susceptibility Assessment. *Environmental Modelling & Software*, 95, 229-245.

- [35]. Wu, Zening, Wanjie Xue, Hongshi Xu, Denghua Yan, Huiliang Wang, and Wenchao Qi. 2022. "Urban Flood Risk Assessment in Zhengzhou, China, Based on a D-Number-Improved Analytic Hierarchy Process and a Self-Organizing Map Algorithm" *Remote Sensing* 14, no. 19: 4777. <https://doi.org/10.3390/rs14194777>
- [36]. Pham, B. T., Pradhan, B., Bui, D. T., Prakash, I., & Dholakia, M. B. (2016). A Comparative Study of Different Machine Learning Methods for Landslide Susceptibility Assessment: A Case Study of Uttarakhand Area (India). *Environmental Modelling & Software*, 84, 240-250.
- [37]. Eteh Desmond Rowland, Francis Omonefe, Jonathan Lise Erebi. (2021-01-18). "Site Suitability Study for Solid Waste Dumpsite Selection Using Geospatial-Based Multi-Criteria Analysis inYenagoa, Bayelsa StateNigeria." *Volume 4*, 1, 1-12
- [38]. Saaty T. L., Decision making with the analytic hierarchy process, *International Journal of Services Sciences*. 2008a, 1, no. 1, 83–98,