

Spatio-Temporal Modelling of Land-use/Landcover Dynamics in Owerri west, Imo State Using Geospatial Technique

Abstract

In recent times, the pressures from uncontrolled land use has resulted to several environmental problems including flooding, pollution, erosion etc. thereby posing a trait to environmental sustainability in Owerri west. Therefore, this research evaluated Land-use and Landcover changes in Owerri west local LGA in Imo state using multi-dated satellite Imagery. The major aim of the study was to carry out analysis of land-use/land cover development trends, thereby detecting the changes that have taken place between the year 2000 to 2020. Software used include ERDAS Imagine, ArcGIS10.5 and Microsoft excel. Three Landsat images, 5(TM), 7 (ETM+) and 8 (OLI) images of 2000, 2010 and 2020 were acquired, pre-processed and classified using supervised classification algorithm. Progressively, accuracy of the classified result and change detection analysis was performed to investigate the changes that has taken place between this period. The spatial and temporal analyses indicate that, all LULC classes altered from their initial state within these epochs. The result of the study shows that the built-up areas have been on a significant constant positive expansion covering 22.57% ,36.11% and 50.30% of the study area in 2000, 2010 and 2020 respectively. Forest decreased from 31.32% to 20.54% and finally to 13.03%. Sparse vegetation decreased from 23.86% to 23.35% and to 15.28%. Exposed surface decreased from 12.24% to 10.04% and increased to 11.08%. Water body decreased gradually from 9.99%, to 9.97% and 9.89%. The study further predicted that beyond the year 2050 thick vegetation may vanish and replaced by urban expansion and this is of grave consequences to the eco-environment. Therefore, this study suggests the establishment of forest reserves and planting of trees within the study area.

Keywords—Environmental monitoring, Landsat Imageries, Land-use/Land-cover, Change detection.

1. INTRODUCTION

Land is vital to the survival of all life on earth and it is very important that we quantify and understand the various changes that take place on it [1]. Land-use change is a known phenomenon in the existing literature of land, urbanization, development control and its resultant implications to socio-economic development and wellbeing of the affected populace are issues of concern to policy makers and urban managers [2]. In recent times, the pressures from uncontrolled land use, rural to Urban sprawl and environmental degradation continues to be a trait to the natural eco-environment [1]. As a result of human activities, the Earth surface is being significantly altered in some manner and his use of land has had a serious negative effect on the natural environment thereby resulting to accelerated growth in settlement expansion [2 -3]. Adequate geographic information of facilities and natural resources is required to be able to prepare and sustain the environment. Limited natural resources and their wide utilization with increasing population is a major concern. Conservation of natural resources is of prime importance for sustainable development and to mitigate the demand and supply gap between resources [4]. Land-use/Land cover monitoring is so significant that neglecting it will lead to serious negative impact on the environment therefore there is the need for timely and accurate documentation of land covers because of its dynamics and global impact [5 - 6]. Environment monitoring helps to understand the changes that are currently taking place, detect their major drivers and predict future trends[7].

Base on the numerous traits posed by uncontrolled environmental changes, there is need to adopt the most reliable technologies to monitor and sustain our environments. Remote Sensing and GIS offer quick and efficient approach to the classification and mapping of land use/land covering geographic space[8]. The basic premise in using Satellite Images for change detection is that changes in land cover result in

changes in radiance values that can be remotely sensed [9]. A geographic information system (GIS) allows geospatial analysts to investigate spatial patterns within the geographic domain and to understand the relationships that exist between the eco-environment and human activities. Technology involving the integration of geographical information system (GIS) and remote sensing technique is designed in such a way that multi-dimensional data can be entered, manipulated, checked, analyzed and displayed as data referenced to the earth[10]. The specific aim of this research is to examine the spatial and temporal dynamics of land use/land cover in Owerri west using geospatial technique.

1.1 Study Area

Owerri West is a Local Government Area of Imo State, Nigeria. Its headquarters are in the town of Umuguma. Owerri West was carved out of the former Owerri Local Government Area in 1996. It has an area of 303.199 km² and a population of 99,265 based on the 2006 census. It is geographically located at latitude 5°29'1.07" N and longitude 7°01'59.70" E.

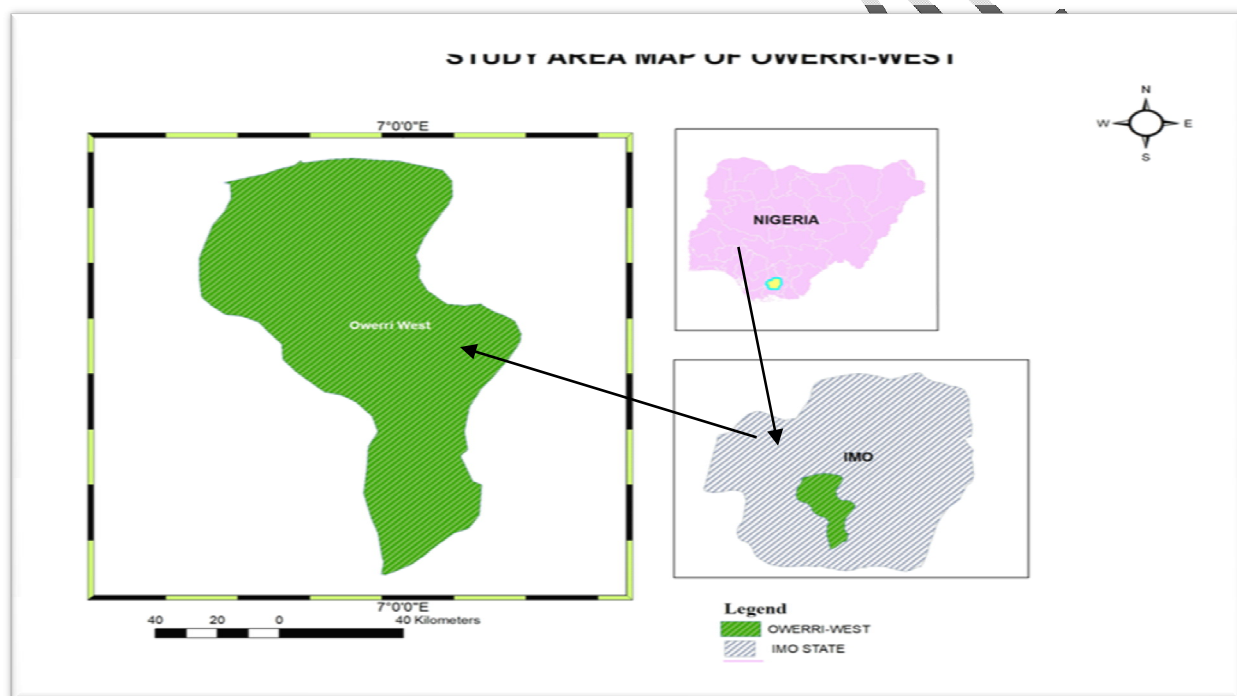


Figure 1 Location map of the study area

2. MATERIAL AND METHODS

2.1 Data Description

Data used in this study include Landsat satellite imagery of three (3) epochs i.e. Landsat imagery of 2000, 2010 and 2020. These datasets were obtained from the Global Land Cover Facility (GLCF). Other datasets include administrative map of Imo state from which the study area was extracted. This was obtained from ministry of land and survey Imo state. Geo-physical points data were obtained through ground truthing. Software used include ERDAS Imagine, ArcGIS 10.5 and Microsoft Excel 2012.

2.2 Methodology

Image processing was done using ERDAS Imagine software. It involves those operations that are normally required prior to the main data analysis and extraction of information. Radiometric correction was carried out followed by geometric correction. Radiometric correction assists in removing inconsistencies in the measured brightness value while geometric correction ensures that the locations of features in the image match their real-world coordinates. Progressively, image enhancement was carried out to improve the appearance of the imagery to assist in visual interpretation and analysis. Thereafter, mosaicking and sub-setting were done to generate/extract the spatial extent of the study area from the merged image tiles in ArcGIS 10.2 window. Prior to image classification, ground truthing was carried out to identify and develop land use/land cover categories. Appropriate number of ground control points belonging to various land use/land cover classes was acquired in the field across the study area. Based on this a training file was created which was used to cluster the study area into feature categories using maximum likelihood supervised classification algorithm. Progressively, accuracy assessment was also carried out using captured ground control points and historical map information of the study area as references. This study was carried out as per the methodology presented in Figure 2 below. Change detection analysis was done to determine the change and percentage changes of the six classes of land use/land cover across the periods. Change detection is a process that measures how the attributes of a particular area have changed between two or more time periods. Change detection often involves comparing imageries of an area taken at different times. In this study, land use/land cover change processes in the periods of 2000-2020 were detected by applying the post-classification comparison method. In this study analysis of spatial extent of feature coverages and observed change detection were graphically presented in percentage and absolute value.

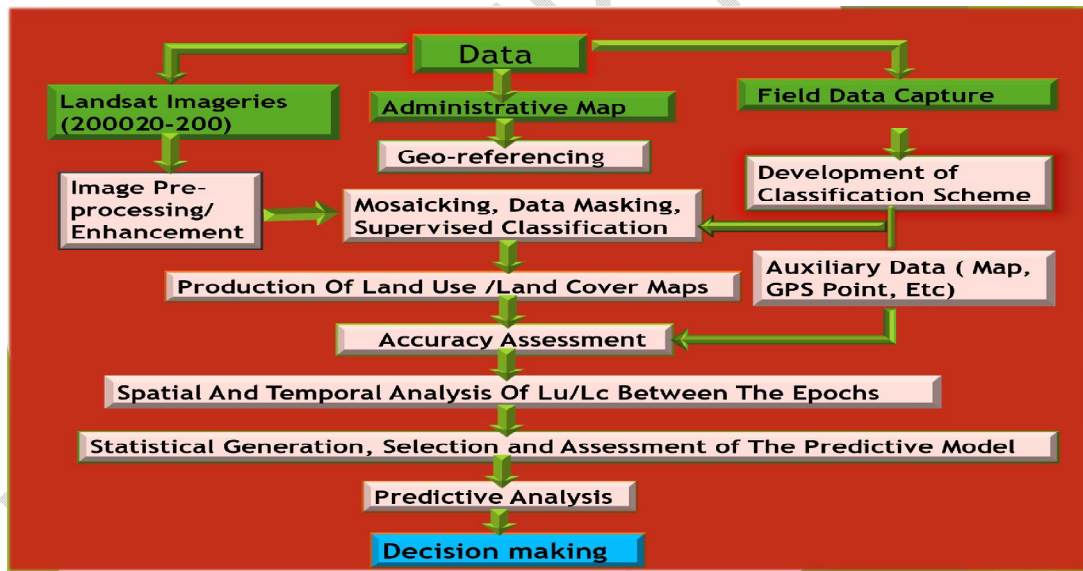


Figure 2 methodological flow chart

RESULT AND DISCUSSION

Figures 3a, 3b and 3c are the spatial extents of the various land use categories in percentage and absolute value in 2000. The Land use/land cover categories identified are forest, vegetation, built up areas, open (exposed) space and water bodies, (figure 3a). In the year 2000 out of the total area forest had the

highest percentage 31.32%, vegetation has 23.86%, built up area 22.57%, open surface 12.24% and water body 9.99% (see figure3b). These corresponds to absolute values of 94.66sq.kms, 72.364sq.kms, 68.438sq.kms, 37.120sq.kms and 30.31sq.kms respectively (see figure3c)

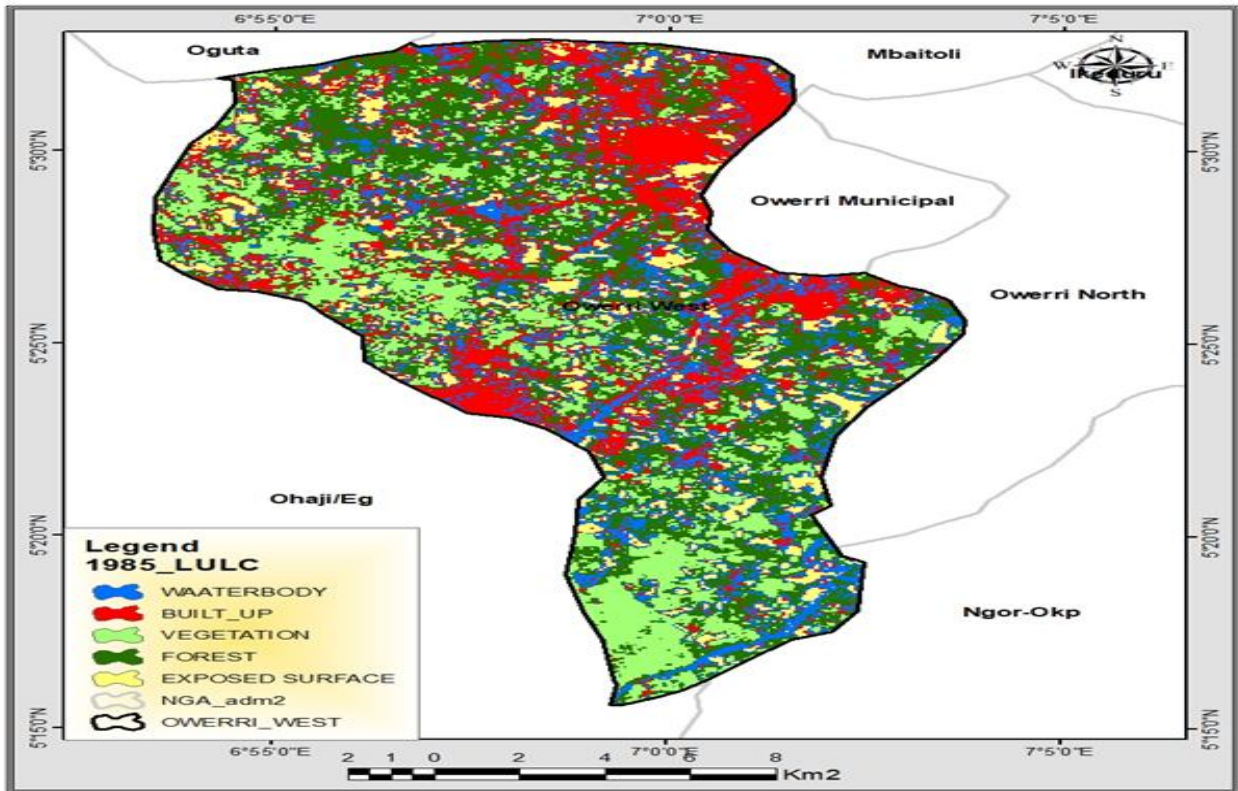


Figure3a Land use/Land cover (LULC) map of the study area in 2000

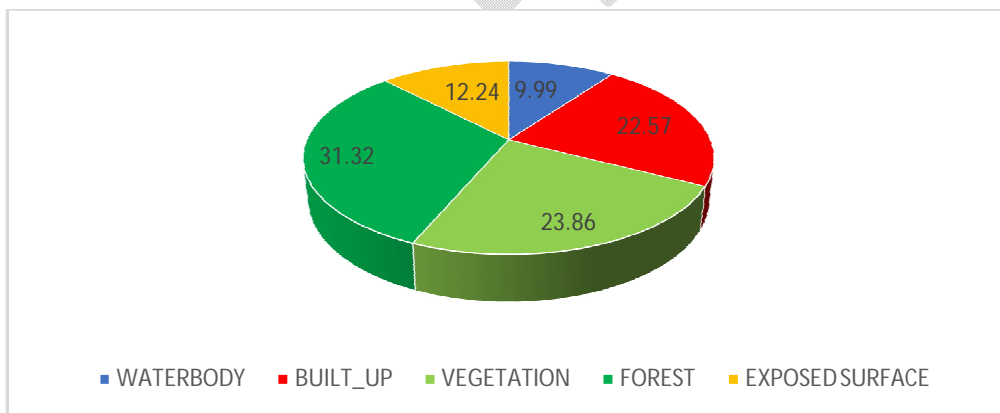


Figure3b percentage Extent of LU/LC of the study area in 2000

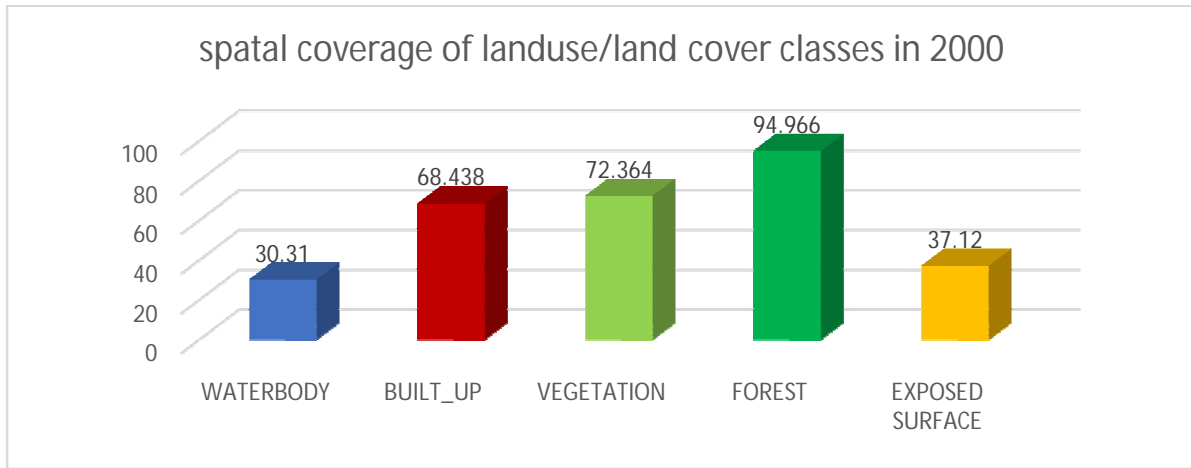


Figure3c Spatial Extent of LU/LC of the study area in 2000

The classified land use/land cover distribution maps of the years 2010 is presented in figure 4a. As can be seen in figure 4b, in 2010 out of the total area, forest had 20.54%, vegetation has 23.35%, built up area 36.11%, open surface 10.04% and water body 9.97%. These correspond to spatial extents of 62.770sq.kms, 70.823sq.kms, 109.501sq.kms, 30.460sq.kms and 30.236sq.kms respectively (see figure 4c).

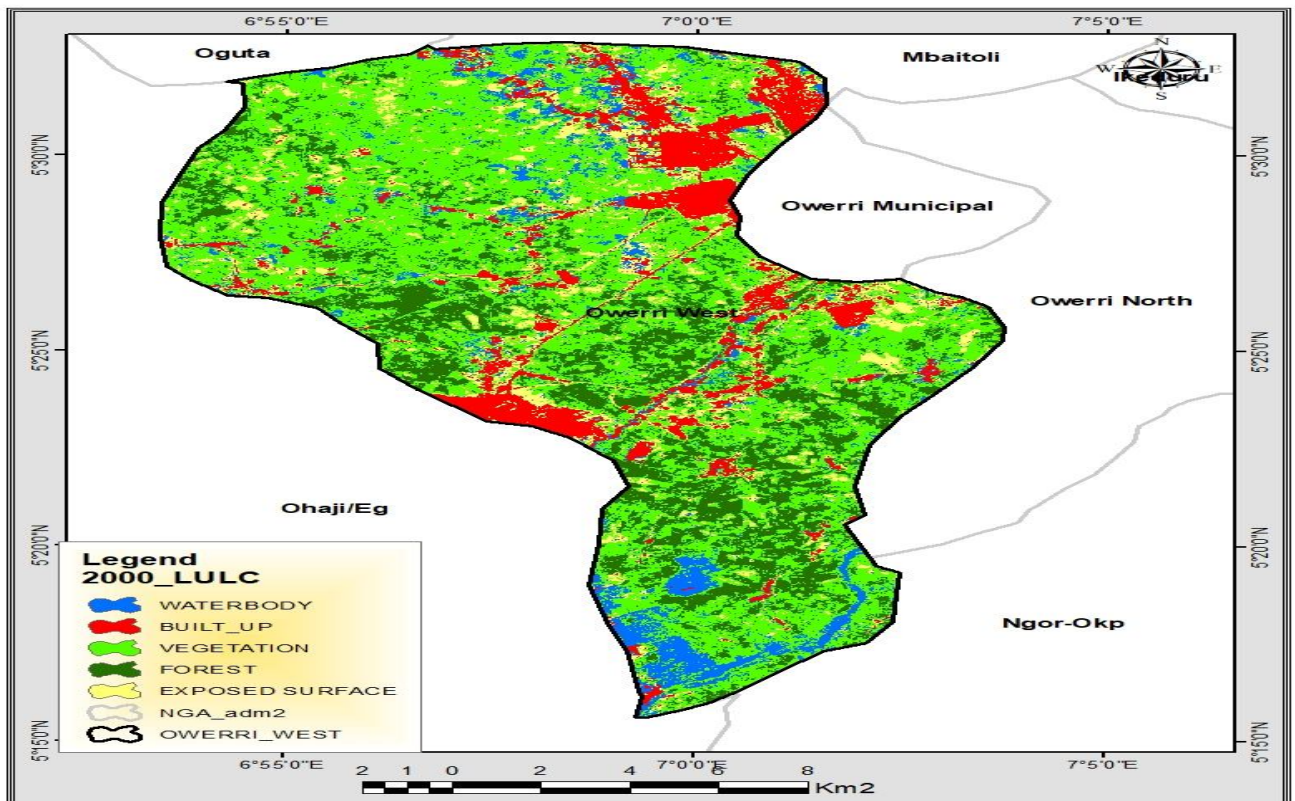


Figure4a Land use/Land cover Map of the study area in 2010

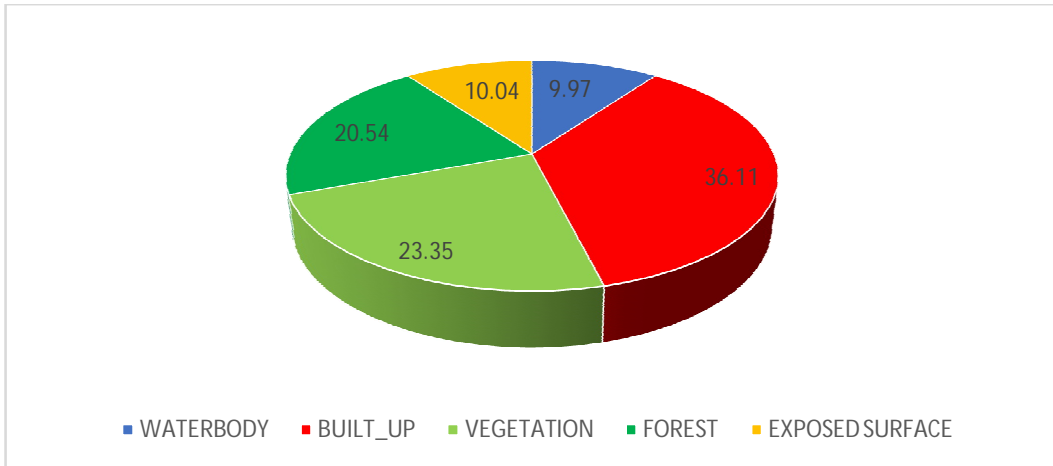


Figure 4b percentage Extent of LU/LC of the study area in 2010

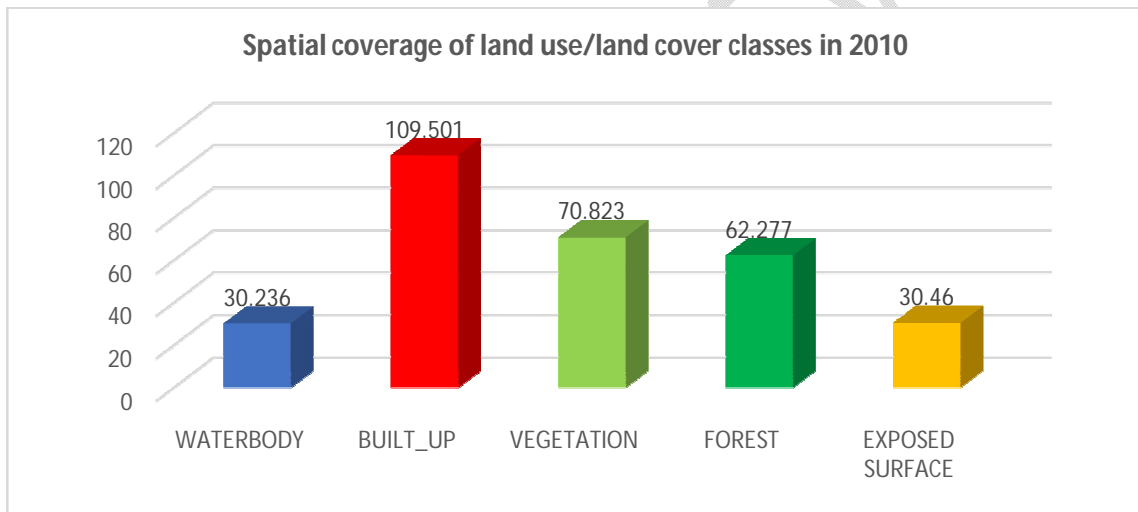


Figure 4c Spatial Extent of LU/LC of the study area in 2010

Figure 5a is the land use land cover character of the study area in 2020. Within this period, out of the total area, forest occupied 13.03%, vegetation has 15.28%, built up areas covered 50.30%, open surface 11.80% and water body 9.89% (figure 5b). These metrics correspond to spatial extents of 40.595sq.kms, 45.275sq.kms, 152.536sq.kms, 35.795 and 29.995 respectively and this is graphically represented in figure 5c.

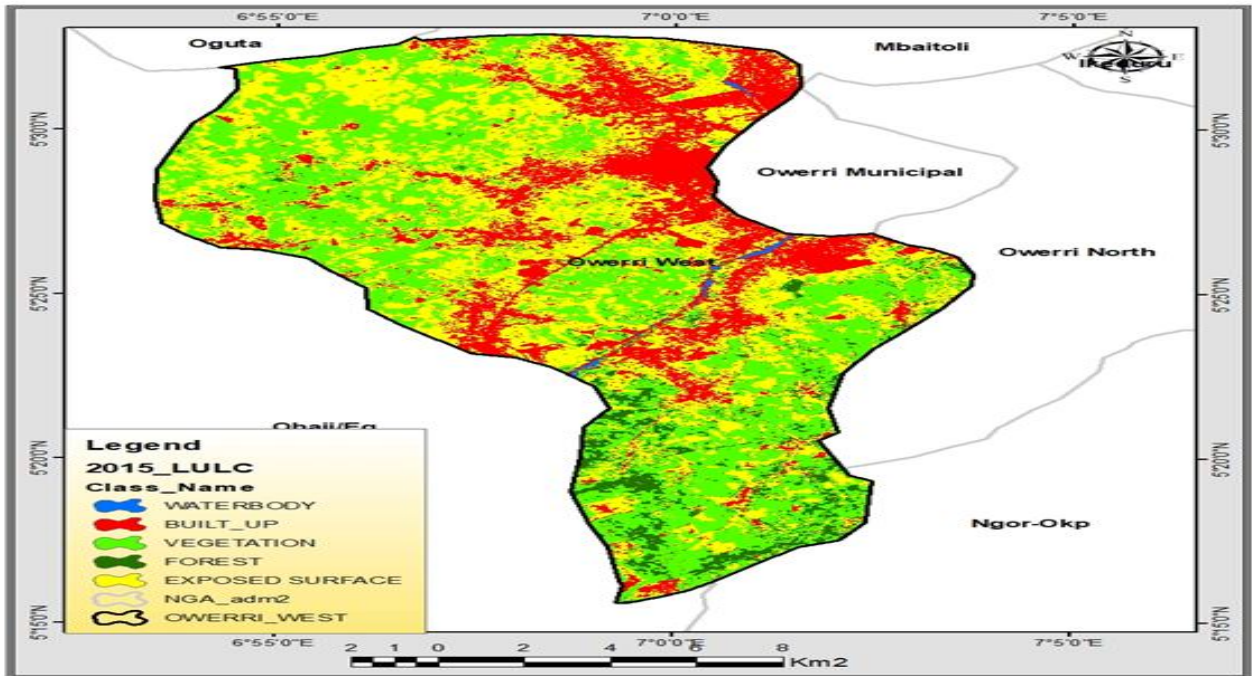


Figure 5a Land use/Land cover Map of the study area in 2020

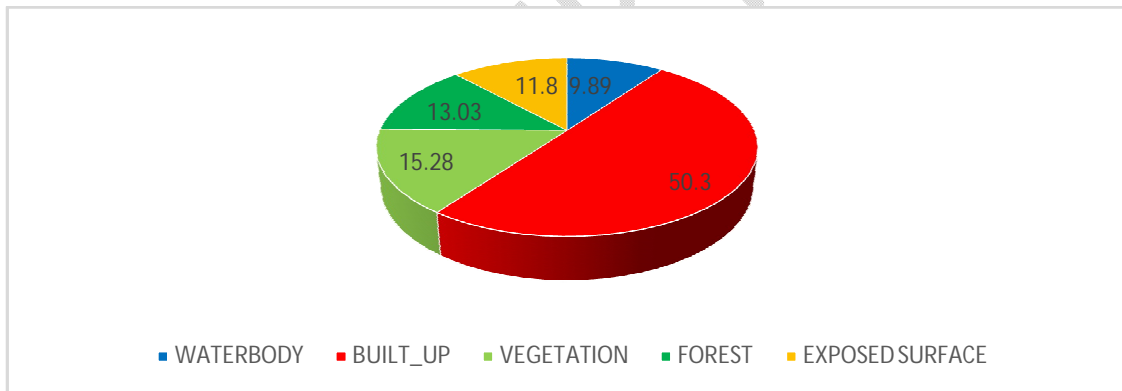


Figure 5b percentage Extent of LU/LC of the study area in 2020

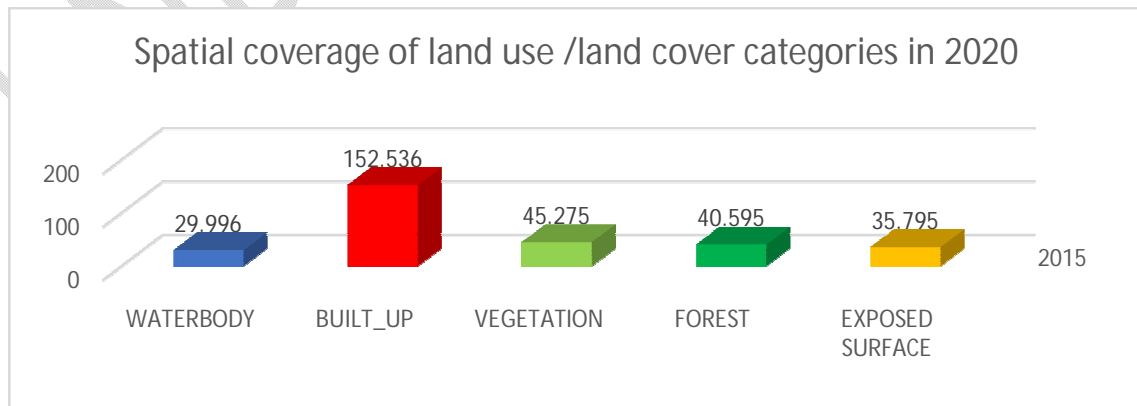


Figure 5c Spatial Extent of LU/LC of the study area in 2020

When the trend is compared between 2000 and 2020, it can be seen that built up areas are on the increase while other feature classes are decreasing. This is graphically shown in figure6 and corroborated by Table1. It can also be observed that temporal variation exhibited by built up and forested feature classes are high. Furthermore, there had been a continuous conversion of non-built-up surfaces to built-up; a situation which is considered to be responsible for environmental degradation within the study area.

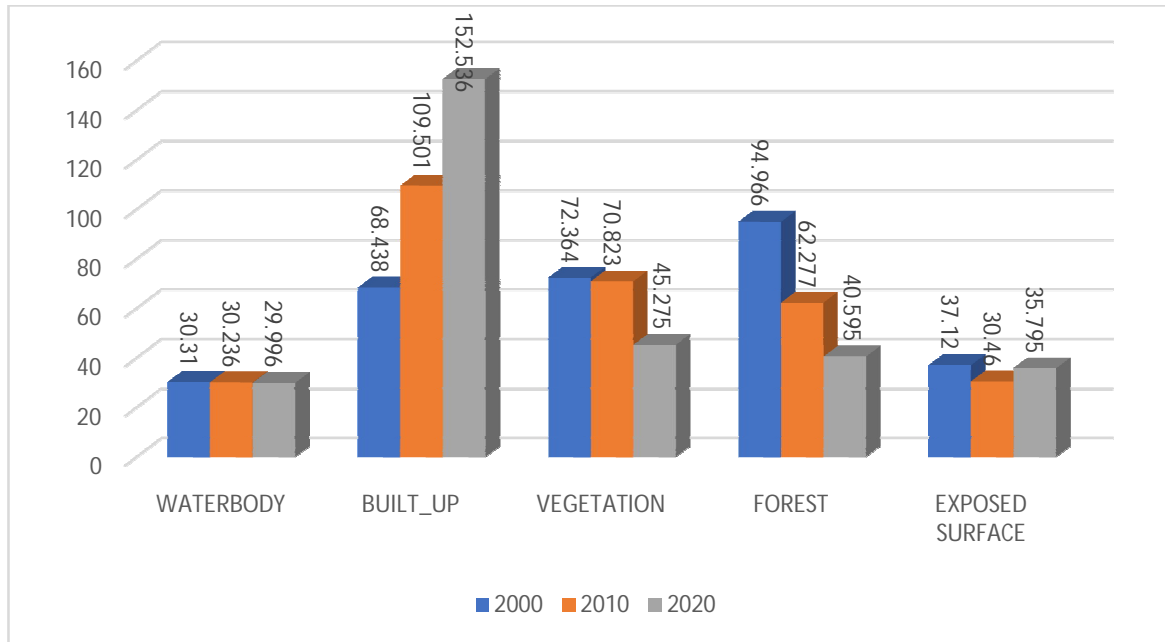


Figure6 Trend of LU/LC Within the Study Area

Table1 summary of LULC change of the study area between 2000 and 2020

CLASSES	2000	%	2010	%	2020	%	% change. 2000 - 2020	Remark
	AREA_Km ²		AREA_Km ²		AREA_Km ²			
WATERBODY	30.310	9.99	30.236	9.970	29.996	9.89	-0.10	Decreasing
BUILT_UP	68.438	22.57	109.501	36.11	152.536	50.30	27.73	Increasing
VEGETATION	72.364	23.86	70.823	23.35	45.275	15.28	-8.58	Decreasing
FOREST	94.966	31.32	62.277	20.54	40.595	13.03	18.29	Decreasing
EXPOSED SURFACE	37.120	12.24	30.460	10.04	35.795	11.80	-0.44	Decreasing
Total	303.199	100	303.199	100.	303.199	100.		Decreasing

All the three classified LULC images of 2000, 2010, and 2020 were subjected to accuracy assessment. The producer's accuracy showed a value of range 73.24% to 79.36%, users accuracy value range of 75.88% to 77.21%, over all accuracy range of 76.14% to 80.06% and Kappa statistics range of 73.21% to 79.41%. As per Sophia et al (2017) kappa statistics of 61% to 80% are categorized as substantial in the rating criteria of kappa statistics. Since the entire kappa co-efficient of the years fall within this range, there is strong agreement between the classified maps and the ground referenced information. This means that the imageries were accurately classified (see Table 2).

Table2 Summary of overall classification accuracy.

Year	Overall Classification Accuracy	Overall Cappa Coefficient
1980	76.14%	0.7552
1990	78.22%	0.7433
2000	80.06%	0.7633
2010	77.54%	0.7321
2020	78.21%	0.7941

Based on high rate of variation observed in built up and forest feature classes their historical trend were plotted (see figure7) and the equation of their trend were extracted as a base for estimating their future behaviors for the next 30 years(see table3). With reference to table3 it can be seen that beyond 2030 the spatial coverage of forest feature class showed negative value which indicates extinction conversely, spatial coverage of built-up feature class in 2050 is estimated to cover 278.345km² and this constitute 91.91% of the study area. These situations are considered to be of grave consequences to the eco-environment, entire populace of the study area and the neighboring communities.

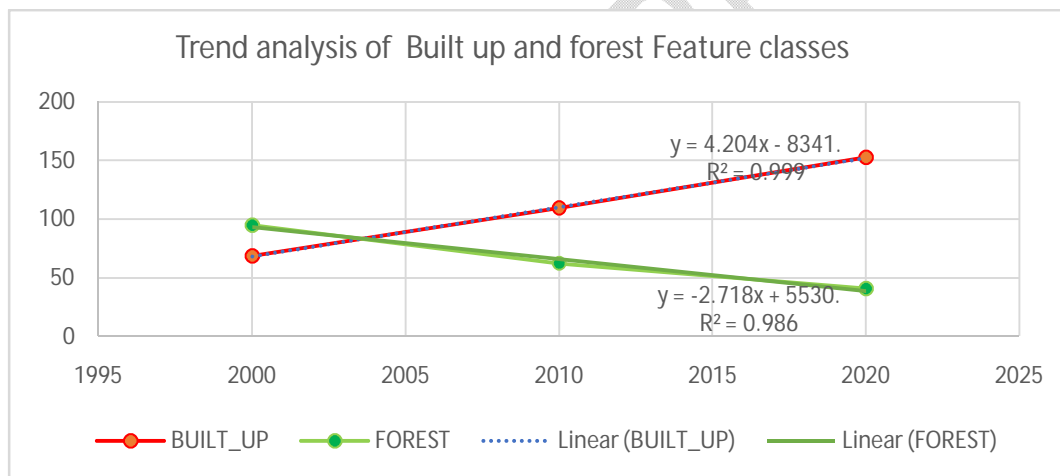


Figure7 correlation plot of built up and forest feature classes

Table3 Estimated spatial coverage of built up and forest feature classes between 2030 and 2050

year	FOREST AREAS		Predictive error (R)			Predictive error (R)
	Observed area	Predicted area		Observed area	Predicted area	
2000	94.966	93.200	1.766	68.438	68.1	0.338
2010	62.277	66.015	-3.738	109.501	110.149	-0.648
2020	40.595	38.83	1.765	153.536	152.198	1.338
2030	----	11.645	----		194.247	---
2040	----	-15.54	----		236.296	---
2050	----	-42.725	----		278.345	--

4.0 CONCLUSION AND RECOMMENDATIONS

In this study, spatio-temporal analysis of land-use/land cover dynamic in Owerri west has been empirically carried out between 2000 and 2020. Future trend of land-use/land cover categories which show significant variation has been successfully estimated for the year 2030 -2050 using model that approximates their historical behaviors. Though, spatial and temporal analysis indicated that from 2000 to 2020 all the Land use/land cover classes changed from its initial state but findings revealed that Built up environment is the fastest growing Land use class in the study area in spatial and temporal terms while forest feature class is declining at alarming rate. Precisely it was estimated that by the year 2050 built up environment will occupy 91.91% of the study area while forest will be totally in extinction. This situation is considered to be of grave consequences to the eco-environment as some of the challenges will be traffic jams, increase in crime rates, land litigations, juvenile delinquencies food scarcity, increase in greenhouse effect because without vegetation, the production of oxygen (O₂) and consumption of the Carbon IV Oxide (CO₂) by the trees would be impossible. Therefore, this study recommends that the current trend should be managed through effective land use policies and proper planning. There should be forest reserves areas and planting of trees within the study area. Besides, constant environmental monitoring should be carried out in the study area and in Nigeria as a whole using very high-resolution satellite imageries.

Disclaimer (Artificial intelligence)

Author(s) hereby declare that NO generative AI technologies such as Large Language Models (ChatGPT, COPILOT, etc) and text-to-image generators have been used during writing or editing of manuscripts.

REFERENCES

- 1) **Aniekan E. Onuwa O.** Spatial and Temporal Evaluation of Land Use/Land Cover Change of the Niger Delta Region of Nigeria from 1986-2016. *International Journal of Geo informatics and Geological Science*. 2016; 8(6) 15-23 DOI: 10.14445/23939206/IJGGS-V4I2P103
- 2) **Onyedikachim IN. Joel II.** Evaluation of the socio-economic impact of landcover / landuse changes in Owerri Municipal, Imo State, Nigeria using remote sensing and geographic information systems. *World Journal of Advanced Research and Reviews*, 2021; 12(03) 175–180. DOI: <https://doi.org/10.30574/wjarr.2021.12.3.0665>
- 3) **Merem EC. Twumasi Y. Wesley J. Alsarari M.** Analyzing Land Use and Change Detection in Eastern Nigeria Using GIS and Remote Sensing. *American Journal of Geographic Information System*. 2019; 8(2): 103-117. DOI: 10.5923/j.ajgis.20190802.06
- 4) **Ojiako JC, Igbokwe EC.** Trend Analysis of Landcover/ Landuse Change in Patani L.G.A, Delta State Nigeria. *International Journal of Advanced Engineering Research and Science*. 2017; 4 (9) PP; 90-93. 2017] <https://dx.doi.org/10.22161/ijaers.4.9.16>

- 5) **Zubair A O.** Monitoring the Growth of Settlements in Ilorin, Nigeria (A GIS and Remote Sensing Approach), *The International Archives Of The Photogrammetry, Remote Sensing And Spatial Information Sciences*. Vol. Xxxvii. Part B6b. Beijing 2008, Pp 225-232
- 6) **Sangeetha G. Srinadh A, Chethan B, Vishal K, Nithi Y.** Morphometric Analysis and Prioritization of Micro watershed of Bisalpur Reservoir using Geospatial Techniques. *International Journal of Innovative Technology and Exploring Engineering*. 2019; 8 (12): 2991-2997.
- 7) **Uchegbulam O, Ameloko AA, Omo-Irabor OO.** Effect of Cloud Cover on Land Use Land Cover dynamics using Remotely Sensed Data of Western Niger Delta, Nigeria. *Journal of Appl. Sci. Environ. Manage.* 2021; 27(5) PP;799-804. DOI:<https://dx.doi.org/10.4314/jasem.v25i5.17>.
- 8) **Hansen MC, Loveland TR.** A review of large area monitoring of land cover change using Landsat data. *Remote Sensing Environment*. 2012: 122, 66–74
- 9) **Khalil VK, Maryam S, Sayed AH.** Modeling Land Changes Using LCM in Fandoqhlo Forest Area (Ardabil). *Journal of Civil and Environmental Engineering*. 2021.V(2021) Issue1.<https://www.researchgate.net/publication/355955640>
- 10) **Idowu IA.** An Assessment of Land Use/Land Cover Changes in a Section of Niger Delta, Nigeria. *Frontiers in Science*. 2012; 2(6) 137-143. DOI: 10.5923/j.fs.20120206.02.
- 11) **Ezeomodo IC, Igbokwe JI.** Mapping and analysis of land use and land cover for a sustainable development using medium resolution satellite images and GIS. *International journal of engineering and management science* **2012**; 3 (4): 513-519. www.sienceandnature.org
- 12) **NkekiFN, Monday OA.** Mapping and Geovisualizing Topographical Data Using Geographic Information System. *Journal of Geography and Geology*. **2014**;6 (1) 2014.
- 13) **Sophia SR. Ndambuki JM.** Accuracy Assessment of Land Use/Land Cover Classification Using Remote Sensing and GIS. *International Journal of Geosciences*. 2017;) (8) 611-622 *International Journal of Geosciences*, 2017; (8) 611-622 <https://doi.org/10.4236/ijg.2017.84033>