

Molecular Characterization of Native Isolates of *Metarhizium rileyi* (Farlow) Samson (Ascomycetes: Hypocreales) from major cropping ecosystems of Northeastern Karnataka

Abstract

Aims : In India, the commercial biopesticides have been recommended against different insect pests on different crops, but their application has shown only a reduced efficiency attributed to differences in susceptibility of target insect pests or non-adaptability to Indian agro-climatic conditions. Therefore, there is a need to isolate region-specific biopesticide strains to enhance the efficacy of such biopesticides for pest management. This study aimed to explore the new isolates of the entomopathogenic fungus, *Metarhizium rileyi* (Farlow) Samson species across the major cropping ecosystems of kalyana Karnataka. *M. rileyi* is an important entomopathogenic fungus of more than 30 species of Lepidoptera larvae. The aim of this research was to characterize isolate of *M. rileyi* from Northeastern Karnataka by using morphological and molecular approaches.

Methodology : The fungus was isolated from the naturally infected cadavers collected from different cropping ecosystems and it was cultured on Sabouraud's Maltose Yeast Extract Agar (SMAY) media for morphological characterization, SMY media used for molecular characterization. The vegetative hyphae of fungi was 2-3 μm in diameter and hyaline, septate. The conidia ellipsoidal, smooth and pale green were observed under the optical microscope. The DNA was isolated using CTAB method and internal transcribed spacer (ITS1, ITS4) were used as the primers for the amplification. The amplified products of 650 bp were purified and sequenced at Clustal W in both the directions using the above primers. A consensus sequence was obtained by alignment of the forward and reverse sequences for this region and deposited in GenBank (UASRBC Mr-24, UASRBC Mr-3, UASRBC Mr-20, UASRBC Mr-29, UASRBC Mr-7, UASRBC Mr-18).

Result: A BLAST search of the sequence in GenBank revealed a 50-100 percent of identity with several strains of *M. rileyi* (Eg. JQ686668, MN907775 and KJ725726 etc.,).

Keywords : *Metarhizium rileyi*, Entomopathogenic fungi, Biological control, Lepidoptera

Commented [I1]: Delete

Commented [I2]: The current study aimed to

Commented [I3]: the

Commented [I4]: remove the space

Commented [I5]: were

Commented [I6]: remove the space

Commented [I7]: add a comma

Commented [I8]: the CTAB

Commented [I9]: an internal

Commented [I10]: was

Commented [I11]: delete

Commented [I12]: delete

Commented [I13]: write conclusion

Introduction

Metarhizium rileyi is a cosmopolitan species of entomopathogenic fungi of the family Clavicipitaceae (Hypocreales, Ascomycota) with extensive literature published under its synonym *Nomuraea rileyi* (Gomez *et al.*, 2009). The main susceptible species of insects, which are key pests of crops such as cotton and soybean, belong to the lepidopteran families Noctuidae, Erebidae, and Nymphalidae (Ignoffo, 1981; Devi and Prasad 2001). *M. rileyi* usually presents high genetic variability (Devi *et al.*, 2007), which has been closely related to the host species from which it is isolated. Unlike other most common fungal entomopathogens with the greatest known epizootic potentials, such as *Metarhizium anisopliae* and *Beauveria bassiana*, *M. rileyi* has a narrow spectrum of hosts (Suwannakut *et al.*, 2005). Because of its high selectivity and effective control under natural or agricultural conditions, *M. rileyi* is an attractive biocontrol agent with potential for development as a bioinsecticide (Ignoffo, 1981; Devi and Prasad 2001) or for prospecting potential biologically active compounds with many possible uses. The genome data of *M. rileyi* strains were obtained, with the aim of providing additional insights into fungal diversity and interactions with the host.

As an IPM practice biocontrol agents of Lepidopteran pests includes the use of parasitoids, predators, entomopathogenic bacteria, viruses and fungi for sustainable management of insect pests which is "of late" gaining importance in view of environmental safety. Fungal bioagents infecting insects can provide an effective alternative for ecofriendly management of insect pests.

M. rileyi extensive literature published under its synonym *Nomuraea rileyi* is a dimorphic, ubiquitous fungus with yeast-like hyphal bodies and true mycelial filaments and named initially as *Botrytis rileyi* (Farlow) and later as *Spicaria rileyi* (Farlow) Charles. The fungus was re-described and placed in the genus, *Nomuraea* by Kish *et al.* (1974). Based on molecular analysis, using RAPD, internal transcribed spacer (ITS) sequence analysis, amplified length polymorphism (AFLP) and telomeric fingerprinting methods indicated that *N. rileyi* isolates were more closely related to *Metarhizium anisopliae* and *M. flavoviride* than to *N. atypicola* and *N. anemonoides* (Boucias *et al.*, 2000). Recently, *Nomuraea rileyi* has been changed to *Metarhizium rileyi* based on its morphological and molecular characterization by Kepler *et al.* (2014).

In addition to the phenotypic analysis, several laboratories have initiated genotypic studies. For example, randomly amplified polymorphic DNA (RAPD) analysis using a series of 10-mer primers (Operon Corp., Alameda, CA) was shown to be able to discriminate among the *N. rileyi* pathotypes (Tigano and Aljanabi, 1999). They were able to select 6 different oligonucleotides (arbitrary sequence primers) that were capable of differentiating DNA samples extracted from geographically distinct *N. rileyi* pathotypes. Cluster analysis of this preliminary data set showed that *N. rileyi* isolates were separated into two phenetic groups. Group 1, having 72% similarity, included all isolates from *S. frugiperda*, whereas members in Group 2, clustering with more than 68% similarity, were isolated from *A. gemmatalis*. RAPD analysis, although serving as a fast and simple technique for examining polymorphisms, can yield

Commented [I14]: written in italic

Commented [I15]: to provide

Commented [I16]: include

Commented [I17]: add a comma

Commented [I18]: because of

Commented [I19]: fingerprinting

Commented [I20]: *N.*

Commented [I21]: *M.*

nonreproducible results. An alternative PCR-based strategy uses amplified fragment length polymorphism (AFLP) analysis that uses high temperature, a low number of amplification cycles, and precision primers (Vos *et al.*, 1995; Majer *et al.*, 1996). The objective of this study was to examine the genotypic properties of a series of Northeastern Karnataka *N. rileyi* isolates. Genomic DNA of *Nomuraea* was subjected to multiple analysis, including the sequencing of the ITS1-5.8s-ITS2 region of the rDNA, to examine the interspecific variation within *N. rileyi*.

Commented [I22]: A high

Commented [I23]: The genomic

Material and methods

Cadavers collection and isolation of EPF

Roving survey was carried out during cropping period in North Eastern region of Karnataka such as Raichur, Kalaburagi, Bidar, Yadgiri, Koppal and Ballari districts for the natural incidence of *M. rileyi* infected cadavers. To record the number of lepidopteran larvae one meter square area was marked and it was considered as a unit and such five units were randomly observed in each crop. The total number of larvae in each unit was critically observed and the cadavers on plants were collected and brought to the laboratory for further studies.

Commented [I24]: The roving

Commented [I25]: the

Commented [I26]: add comma

Commented [I27]: remove the space

The cadavers which were brought to the laboratory were identified based on the following characters. The larvae became hard, mummified and adhered to the leaves and other plant parts with their prolegs with raised head and anterior part of the body. White mycelial growth covered the entire body of the infected caterpillar except for the head capsule. The fungus on infected caterpillars sporulated profusely in the field itself and such cadavers were seen covered with fine light green spores all over the body.

Commented [I28]: laboratory

Commented [I29]:

Commented [I30]: add comma

Commented [I31]: heads

Commented [I32]: parts

The cadavers were collected in sterilized vials and kept in a Petri plate on moistened filter paper for the development of fungus. Similarly, the prevailing weather conditions across the survey were recorded.

Commented [I33]: delete

The dead cadavers were surface sterilized by immersing in 0.1 per cent sodium hypochlorite solution for two minutes followed by rinsing in three changes of sterilized distilled water. The surface sterilized diseased specimens were cut in a sterile watch glass and a small portion of the infected tissue was transferred to a sterile culture plate containing Sabouraud Maltose Yeast Extract Agar Medium (SMAY) method followed by Bell (1975). The plates were incubated at room temperature 25 ± 2 °C with 80 to 85 per cent relative humidity for 9-14 days and the colonies were further purified by repeated subculture on SMAY medium and pure cultures were maintained in slants. The various observations on morphological and growth characteristics of individual isolates of *M. rileyi* were observed after 14 days of incubation at 25 ± 2 °C.

Commented [I34]: percent

Commented [I35]: percent

Molecular characterization of EPF isolate

DNA extraction

100 milligrams of each isolate were ground in one ml of pre-warmed CTAB (5M NaCl, 0.5 M EDTA and 1M Tris Base) extraction buffer and added 200 µl of β-mercaptaethanol and incubated at 65 °C in water bath for 60 to 90 minutes with occasional stirring, 500 µl of chloroform and isoamylalcohol (24:1 ratio) mixture is added to the sample then centrifuged at 10,000 revolutions per minute (rpm) at 20 °C for five minutes, for aqueous layer 5 µl of RNAase (10 mg/ml) was added and incubated for 30 minutes at room temperature. Ice-cold isopropanol is added to each tube equal to the volume of the sample. DNA pellets were dissolved in 50 microlitre of elution buffer (10mM Tris - HCl + 0.1mM EDTA at pH 8.0) (Kumar *et al.*, 2011). The quality and quantity of DNA were analyzed by running 5 µl of each sample in 0.8 per cent agarose gel. An alternative method is by nanodrop spectrophotometer at 260 nm (ND-1000, USA). This method was based on measuring the amount of ultraviolet (UV) irradiation that is absorbed by the bases.

Commented [I36]: mercaptoethanol

Commented [I37]: the water

Commented [I38]: percent

PCR amplification

DNA Amplification and Sequencing (Sambrook *et al.*, 1989) done by using 10X Assay Buffer (5 µl), MgCl₂ (3 µl), dNTP mix (2 µl), forward primer, reverse primer, Taq DNA polymerase and DNA sample. After preparation of the reaction mixture, it was used for amplification through PCR. The amplification of the reaction mixture takes place at different stages (Sambrook *et al.*, 1989). PCR program involved 35 cycles of 94 °C for one min., 52 °C for one min., 72 °C for one min. The amplified products were sent for genome sequencing. The ITS1 - 5.8S - ITS4 amplified products (about 650 bp) were purified with the PCR and Gel Band Purification kit and sequenced in an automated system.

Commented [I39]: were

Commented [I40]: add comma

Commented [I41]: thepreparation

Commented [I42]: and

Phylogenetic tree construction

The sequences were aligned using the ClustalW (<http://www.ebi.ac.uk/clustalw>) program and compared those with available data in the GenBank database for *M. rileyi* (Sambrook *et al.*, 1989).

Results and discussion

Table 1. Prevalence of *M. rileyi* from different districts

Sl. No.	Districts	No. of isolates	Per cent of abundance
1	Raichur	20.00 (4.53)	20.32 (26.79)
2	Yadgiri	0.00 (0.71)	0.00 (0.52)
3	Ballari	5.00 (2.35)	29.87 (33.13)
4	Bidar	1.00	8.47

		(1.22)	(16.92)
5	Kalburgi	0.00 (0.71)	0.00 (0.52)
6	Koppal	3.00 (1.87)	21.02 (27.29)
SEm±		0.38	0.25
CD @ 5%		1.14	0.75

Figures in the parenthesis indicate $\sqrt{x + 0.5}$ transformed values

Abundance of *M. rileyi* in North Eastern Karnataka

The abundance of *M. rileyi* from different districts indicated that the highest per cent was in Ballari (29.87 %) with five isolates followed by Koppal (21.02 %) which was on par with Raichur (20.32 %) with three and 20 isolates, respectively. Lowest abundance recorded from Bidar (8.47 %) (Table 1). There was no isolate found from Yadgiri and Kalaburagi region which all depends on stage of the pests and prevailing weather conditions.

The Pearson's correlation studies for natural incidence of *M. rileyi* in North Eastern region Karnataka found significant and positive correlation with relative humidity and rainfall (Table 2).

The correlation studies on natural incidence of *M. rileyi* on various lepidopteran pests in different districts with weather parameters indicated that relative humidity had positive and significant correlation in Koppal (0.39), Raichur (0.23) and Ballari (0.20) with the incidence of *M. rileyi* and negative correlation with maximum and minimum temperature. From the survey data the investigation was supported by Ochoa *et al.* (2003), Firake and Behere (2020) and Gebremariam *et al.* (2021) they suggested that the difference between the infection could be attributed to variability in cropping patterns, types of natural vegetation, weather parameters, undisturbed habitats, shading area protects the fungi from UV-radiation, free from chemical pesticide application. The low incidence of *M. rileyi* in Bidar, Yadgir and Kalaburagi may be due to the fact that the frequency of survey and the time of survey may not have coincided with the incidence.

The present study revealed that highest cadavers of *S. frugiperda* were noticed in maize growing districts viz., Raichur, Ballari and Koppal while in Bidar, Kalaburagi and Yadgir districts there was no natural incidence of *M. rileyi* which indicated that in traditional maize growing areas the incidence of *M. rileyi* was high and the present findings are in line with Mallapur *et al.* (2018) who also observed in traditional maize growing areas (Dharwad) had highest incidence (18.30 %) while in non traditional areas like Vijaypur had low incidence of *M. rileyi*. The present findings are also corroborates with Sharanabasappa *et al.* (2018) who opined that natural incidence of *M. rileyi* mainly depends on the availability of the host for the perpetuation of the disease. Similarly, Shylesh *et al.* (2018) stated that the *M. rileyi* was predominant in maize growing areas and also Visalakshi *et al.* (2020) opined that natural

Commented [I43]: that

Commented [I44]: percent

Commented [I45]: was recorded

Commented [I46]: the

Commented [I47]: the

Commented [I48]: delete

Commented [I49]: the natural

Commented [I50]: a

Commented [I51]: between

Commented [I52]: the

Commented [I53]: a positive

Commented [I54]: pattern

Commented [I55]: the survey

Commented [I56]: the survey

Commented [I57]: add comma

Commented [I58]: add -

Commented [I59]: delete

Commented [I60]: add -

Commented [I61]: add comma

incidence of *M. rileyi* also depends on the availability of *S. frugiperda* varied with the cropping pattern in Andhra Pradesh.

Table 2. Correlation of weather parameters with natural incidence of *M. rileyi* in North Eastern region of Karnataka

Districts	Natural incidence of mycosis (%)	Maximum Temperature	Minimum Temperature	Rainfall	Relative humidity
Raichur	0.61**	-0.09	0.10	-0.01	0.23*
Ballari	1.00**	-0.18	0.12	0.27	0.20*
Koppal	0.67**	-0.13	-0.32	0.37*	0.39*

** Correlation is significant at the 0.05 level (2-tailed)

* Correlation is significant at the 0.05 level (2-tailed)

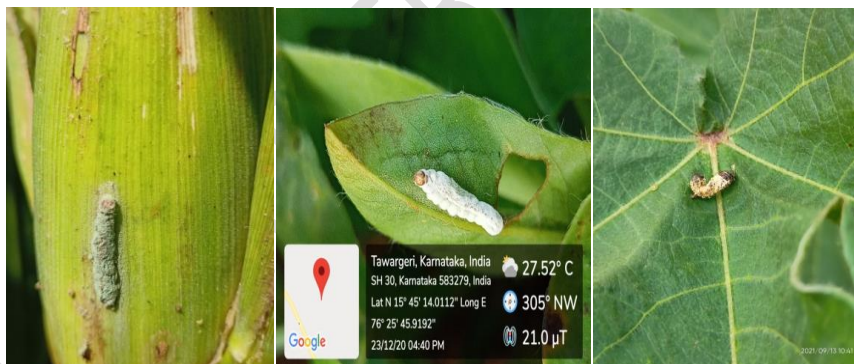


Plate 1. Mycosed cadavers of *S. frugiperda* collected in different crop ecosystems



Plate 2. A) Mycelial mat for DNA isolation. B) Sub cultures of native isolates of *M. rileyi* collected from North Eastern Karnataka C) Pure culture of *M. rileyi*



Plate 3. Sporulation of *M. rileyi* on cadavers

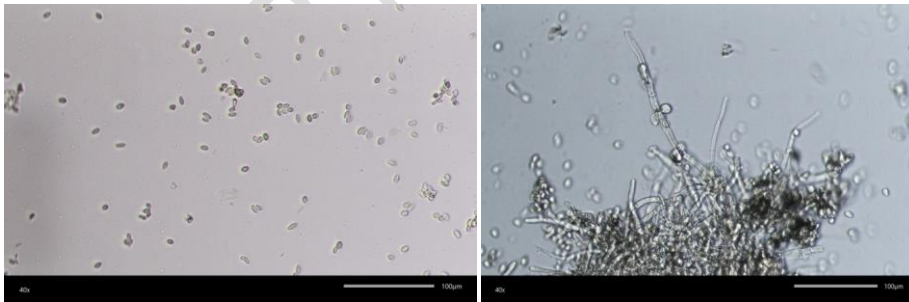


Plate 4. Conidial structures of *M. rileyi* under phase contrast microscope

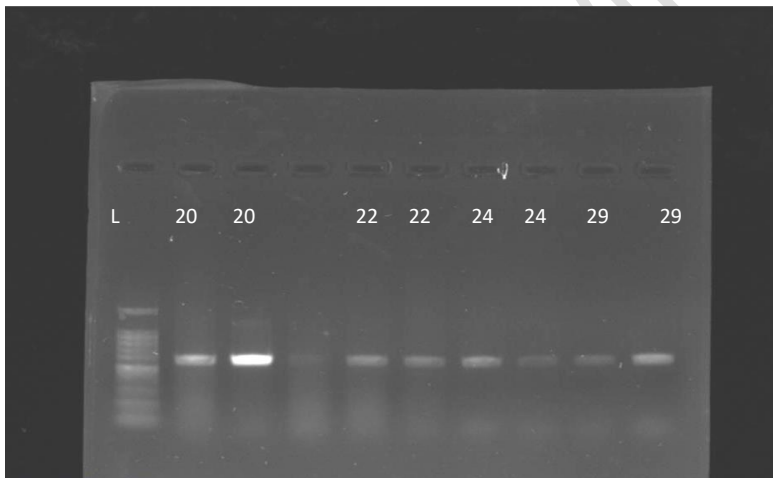
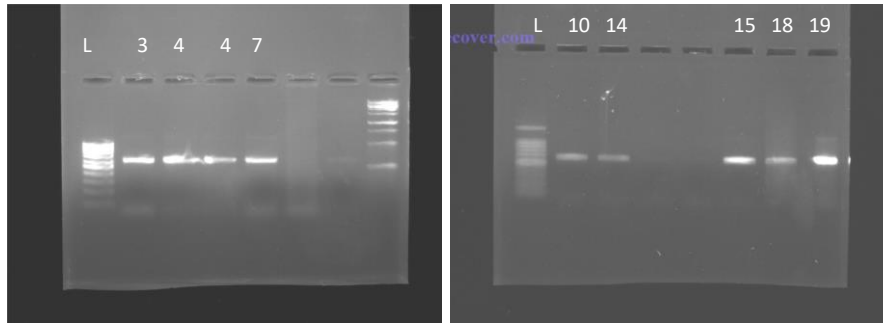


Plate 5. PCR amplified gel image for identification of base pairs of genomic DNA of *M. rileyi* isolates with ladder DNA (100 base pairs) (L : Ladder DNA)
(The numbers represent the isolate number)

Table 3. Details of accession number for *M. rileyi* isolates isolated from lepidopteran cadavers collected from North Eastern Karnataka region

Sl. No.	Isolate number	Accession number	Crop	Host	Latitude and longitude	Location	Date of collection
1	UASRBC Mr -3	-	Maize	<i>S. frugiperda</i>	16.19639 77.32708	Askhal, Raichur	2-10-2020
2	UASRBC Mr -4	-	Groundnut	<i>S. litura</i>	16.19893 77.32715	UAS Raichur	19-12-2020
3	UASRBC Mr -7	OK178862	Redgram	<i>S. litura</i>	16.19936 77.32708	Askhal, Raichur	9-10-2020
4	UASRBC Mr -10	-	Groundnut	<i>A. modicella</i>	16.19893 77.32715	UAS Raichur	20-10-2020
5	UASRBC Mr 14	OK184900	Redgram	<i>S. litura</i>	16.198889, 77.216222	Kalmal, Raichur	28-10-2020
6	UASRBC Mr -15	-	Maize	<i>S. frugiperda</i>	15.28551 76.14853	Gondbal, Koppal	13-10-2020
7	UASRBC Mr -18	OK184898	Maize	<i>S. frugiperda</i>	15.419964 76.875882	Konchigeri, Raichur	17-10-2020
9	UASRBC Mr -20	OK184899	Maize	<i>S. frugiperda</i>	15.5248, 76.8793	Tekkalakote, Raichur	4-12-2020
11	UASRBC Mr -24	OK184897	Groundnut	<i>S. litura</i>	15.3485, 76.17812	Askhal, Raichur	9-10-2020
12	UASRBC Mr- 29	OK177835	Groundnut	<i>A. modicella</i>	15.764867, 76.538698	Kardchalami, Raichur	22-02-2021

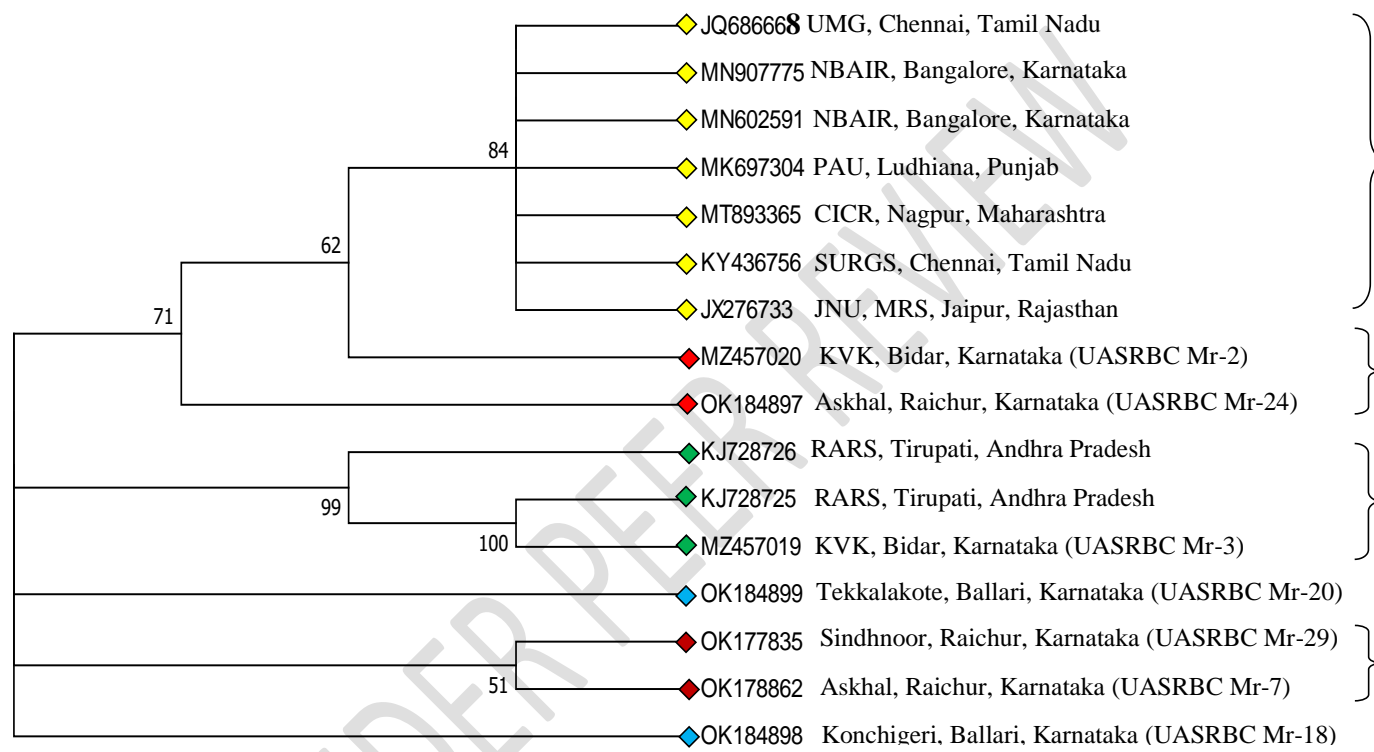


Fig. 1. Phylogenetic tree based on the nucleotide sequences of ITS region of isolated fungi with relevant sequences of *M. rileyi* from NCBI database

Morphological characterization

After the collection of cadavers from the survey was carried to the laboratory and some cadavers were kept for profuse sporulation and further purified by repeated subculture on SMAY medium. Initially, the colour of the colony was pale green to pale turtle green, then changing into olive to malachite green. Vegetative hyphae, 2-3 μm in mean diameter which is smooth, hyaline and septate. Branches near a septum develop in whorls that each giving rise to 2-4 phialides. The branches were usually cylindrical occasionally with a swollen base. The conidia in dry divergent chains are ellipsoidal, smooth and pale green.

Commented [I62]: add comma

Commented [I63]: delete

Commented [I64]: add comma

Molecular characterization of native isolates of *Metarhizium rileyi*

The fungus was identified as *M. rileyi* based on morphology and was further confirmed by amplification of the ITS region using PCR. PCR specific ITS regions of the EPF as *M. rileyi* further confirmed by the NCBI-BLAST analysis of partial genome sequence amplified by ITS1 and ITS4 (Plate 5). The ITS generated sequences were deposited in the NCBI Gene Bank database and an accession number was obtained (Table 3). Using Neighbour joining method in MEGA software (Ver. 10.0), a phylogenetic tree was constructed by considering most reference sequences from the NCBI along with sequences of *M. rileyi* to study the evolutionary relationship between different isolates. The phylogeny was depicted in Fig. 1.

Commented [I65]: were

Commented [I66]: add -

Commented [I67]: Neighbor

Commented [I68]: is

Genetic similarity among *M. rileyi* isolates

The phylogenetic tree analysis showed that the isolates were grouped into five major clusters. The isolates belonging to Tekkalakote Ballari, Konchigeri Ballari, formed a separate cluster and the rest of the species formed a cluster including our isolates. Two isolates of RARS, Tirupati, Andhra Pradesh; KVK, Bidar, Karnataka (UASRBC Mr-3) one subgroup with bootstrap value 99-100 per cent indicates they are strongly supported. The isolates of UMG, Chennai, Tamil Nadu; NBAIR, Bangalore, Karnataka; PAU, Ludhiana, Punjab; Maharashtra, Chennai, Tamil Nadu; JNU, MRS, Jaipur, Rajasthan; KVK, Bidar, Karnataka (UASRBC Mr-2); and Askihal, Raichur, Karnataka (UASRBC Mr-24); formed one subgroup with bootstrap value 71 - 84 per cent indicates they are well supported. The Sindhnoor in Raichur Karnataka (UASRBC Mr-29), Askihal on pigeonpea in Raichur, Karnataka (UASRBC Mr-7) into a separate subgroup and Tekkalakote, Ballari, Karnataka (UASRBC Mr-20) and Konchigeri Ballari on maize in Karnataka (UASRBC Mr-18) formed two separate subgroups with a bootstrap value of 50-60 per cent indicates they are weakly supported.

Commented [I69]: and

Commented [I70]: percent

Commented [I71]: percent

From molecular analysis data Lee *et al.* (2012) used the ITS region along with β -tubulin and EF-1 α for molecular identification of *M. rileyi*. Among the three regions, the ITS region has recorded the best resolution for the molecular identification of the *M. rileyi* in comparison to β -tubulin and EF-1 α . Further, to study the evolutionary pattern of *M. rileyi*, a phylogenetic tree was constructed using the most relevant

Commented [I72]: add comma

sequences of NCBI of closely related genera using neighbor joining method. In their study, they found that all the *Nomuraea* grouped together. These results were highly concurrent and matched with the present study. Similarly, Visalakshi (2020) reported that the fungus was identified as *M. rileyi* based on ITS sequence homology and the strain was designated as AKP-Nr-1.

Commented [I73]: add -

In contrast to the ITS region, analysis of the partial beta-tubulin gene based on neighbor joining and 1000 bootstrap, *N. atypicola* failed to form a monophyletic grouping with the other two species of *Nomuraea* (Han *et al.*, 2002).

Commented [I74]: add -

This probably suggests that one isolate (UASRBC Mr-24) of *M. rileyi* from this study might have evolved from the same ecological niche as that of KVK, Bidar Karnataka (UASRBC Mr-2) and the remaining four isolates *viz.*, UASRBC Mr-20, UASRBC Mr-29, UASRBC Mr-7 and UASRBC Mr-18) acts as a base for the future isolates of *M. rileyi*.

Commented [I75]: add comma

This strongly suggests that ITS was the effective region for species identification and grouping as well as to study the evolutionary pattern of the *Nomuraea* spp.

Commented [I76]: for studying

Conclusion

Molecular characterization done by PCR based DNA sequencing analysis using ITS1 and ITS4 primers. The amplified DNA sequences of the ITS region (Internal Transcribed Spacer 1, 2 and 5.8S subunit) of the 6 isolates *viz.*, UASRBC Mr-7, UASRBC Mr-14, UASRBC Mr-18, UASRBC Mr-20, UASRBC Mr-24 and UASRBC Mr-29 were submitted to NCBI Genbank under the Accession numbers OK178862, OK184900, OK184898, OK184899, OK184897 and OK177835 respectively. The phylogenetic relationship was derived from comparisons of the ITS gene sequences and a Dendrogram was constructed. The homology and variations based on amino acid sequences among the isolates showed 71 per cent (OK184897) and 51 per cent similarity with four isolates (OK184899, OK177835, OK178862 and OK184898). The molecular characters helpful to identify the variation in the different strains at its genome level.

Commented [I77]: Add comma

Commented [I78]: percent

Commented [I79]: percent

Ethics approval and consent to participate

All experimental works were approved by University of Agricultural Sciences, Raichur.

Consent for publication

Not applicable.

Reference

Commented [I80]: please add some recent references

Bell JV. Production and pathogenicity of the fungus, *Spicaria rileyi* from solid and liquid media. J. Invertebrate Pathol; 1975. 26: 129-130.

Boucias DG, Schoborg EA, Allen GE, The relative susceptibility of six noctuid species to infection by *Nomuraea rileyi* isolated from *Anticarsa gemmatalis*. J. Invertebr Pathol. 1982; 39: 238 - 240.

Boucias DG, Tigano MS, Sosa-Gomez DR, Glare TR and Inglis PW.. Genotypic properties of the entomopathogenic fungus *N. rileyi*. J. Biol. Control 19: 124-138.

Devi PSV, Prasad YG. *Nomuraea rileyi* a potential mycoinsecticide. 2001; pp: 23-38.

Devi U K, Reineke A, Rao UCM, Reddy NRN, Khan A. AFLP and single-strand conformation polymorphism studies of recombination in the entomopathogenic fungus *Nomuraea rileyi*. Mycol. Res. 2007; 111:716 –725.

Commented [I81]: Remove space

FAO. World Food and Agriculture - Statistical Pocket Book 2018. Rome. 2019; 254 pp. Licence: CC BY-NC-SA 3.0 IGO.

Firake DM, Behere GT. Natural mortality of invasive fall armyworm, *Spodoptera frugiperda* (J E Smith) (Lepidoptera: Noctuidae) in maize agroecosystems of northeast India. Biol. Control. 2020; 148 : 104-110.

Commented [I82]: ,

Commented [I83]: Remove space

Fuxa JR. Dispersion and spread of the entomopathogenic fungus *Nomuraea rileyi* (Moniliales: Moniliaceae) in a soybean field. Environ. Entomol, 1984; 13:252–258.

Commented [I84]: Remove space

Han Q, Inglis GD, Hausner G. Phylogenetic relationships among strains of the entomopathogenic fungus, *Nomuraea rileyi*, as revealed by partial β - tubulin sequences and inter-simple sequence repeat (ISSR) analysis. Lett. Appl. Microbiol. 2002; 34(5): 376–383.

Ignoffo CM. The fungus *Nomuraea rileyi* as a microbial insecticide, 1981; p 513–538. In Burges HD (ed), Microbial control of pests and plant diseases 1970 –1980. Academic Press, London, United Kingdom.

Kepler RM, Humber RA, Bischoff JF, Rehner SA. Clarification of generic and species boundaries for *Metarhizium* and related fungi through multigene phylogenetics. Mycologia 2014; 106: 811– 829.

Commented [I85]: remove

Kish LP, Samson RA, Allen GE. The genus, *Nomuraea* Maublanc. J. Invertebr. Pathol. 1974, 24 : 154-158.

Kumar P, Anshu V, Kumar S. Morpho-pathological and molecular characterization of *Bipolaris oryzae* in Rice (*Oryza sativa*). J. Phytopathol. 2011; 159: 51-56.

- Lee WW, Tae YS, Seung HK, Jae BC, Sung MB, Soo DW. Characteristics and virulence assay of entomopathogenic fungus *Nomuraea rileyi* for the microbial control of *Spodoptera exigua* (Lepidoptera: Noctuidae). Korean J. Microbiol. 2012; 48(4): 284-292.
- Majer D, Mithen R, Lewis BG, Vos P, Potter RP. The use of ALFP fingerprinting for the detection of genetic variation in fungi. Mycol. Res. 1996; 100, 1107-1111.
- Moscardi F, Kastelic J G, Sosa-Gómez D R;. Suscetibilidade de três espécies de lepidópteros associados à soja a três isolados do fungo *Nomuraea rileyi* (Farlow) Samson. An Soc. Entomol Bras. 1992; 21:93-100.
- Mallapur CP, Naik AK, Hagari S, Praveen T, Patil RK, Lingappa S. Potentiality of *Nomuraea rileyi* (Farlow) Samson against the fall armyworm, *Spodoptera frugiperda* (JE Smith) infesting maize. J. Entomol. Zool. Stud 2018; 6(6): 1062-1067.
- Ramanujam B, Prasad RD, Narayanan K. Laboratory evaluation of four entomopathogenic fungi on *Helicoverpa armigera* (Hubner) and *Spodoptera litura* (Fabricius). Biological control of lepidopteran pests In :Proceedings of the Symposium of Biological Control of Lepidopteran Pests, July 17-18, 2002, Bangalore, India. 2003. pp. 181-184.
- Sambrook J, Fritsch EF, Maniatis T. Molecular cloning: a laboratory manual. Cold Spring Harbor, NY, Cold Spring Harbor Laboratory, 1989; 11 (pp): 31.
- Sharanabasappa, Kalleshwaraswamy CM, Asokan R, Swamy HM, Maruthi MS, Pavithra HB, Hegbe K, Navi S, Prabhu ST, Goergen G E. First report of the fall armyworm, *Spodoptera frugiperda* (J E Smith) (Lepidoptera: Noctuidae), an alien invasive pest on maize in India. Pest management in horticultural ecosystems. 2018; 24 (I): 23-29.
- Sharanabassappa DS, Prasanna BM, Kalleshwaraswamy, CM, Jaba J, Choudhary B. Fall armyworm (*Spodoptera frugiperda*). Polyphagous Pests of Crops. 2021; (pp): 349-372.
- Shylesha AN, Jalali SK, Gupta A, Varshney R, Venkatesan T, Shetty P, Ojha R, Ganiger P C, Navik O, Subaharan K, Bakthavatsalam N, Ballal CR. Studies on new invasive pest *Spodoptera frugiperda* (J. E. Smith) (Lepidoptera: Noctuidae) and its natural enemies. J. Biol. Control. 2018; 32(3): 1-7.

- Sosa-Gomez DR, Humber RA, Hodge K.T, Binneck E, da Silva-Brandao KL,. Variability of the mitochondrial SSU rDNA of *Nomuraea* species and other entomopathogenic fungi from hypocreales. *Mycopathologia*. 2009; 167:145-154.
- Sosa-Gomez DR. Chapter 13- microbial control of soybean pest insects and mites. 2017; p 199 –208. In Lacey LA (ed), *Microbial control of insect and mite pests*. Academic Press, London, United Kingdom.
- Suwannakut S, Boucias DG, Wiwat C. Genotypic analysis of *Nomuraea rileyi* collected from various noctuid hosts. *J. Invertebr. Pathol*. 2005; 90: 169 –176.
- Tigano MS, Aljanbi S. RAPD analysis of *Nomuraea rileyi*. *J. Invertebr. Pathol*. 1999; 75, 240-242.
- Vimaladevi VPS, Prasad YG Rajeswari B, Vijaya Bhaskar L. Epizootics of the entomofungal pathogen, *Nomuraea rileyi* on lepidopterous pests of oil seed crops. *J. Oilseeds Res*. 1996;13 : 144-148.
- Visalakshi M, Varma PK, Sekhar VC, Bharathalaxmi M, Manisha BL and Upendhar S. Studies on mycosis of *Metarhizium (Nomuraea) rileyi* on *Spodoptera frugiperda* infesting maize in Andhra Pradesh, India. *Egypt. J. Biol. Pest Control*. 2020; 30 (1): 1-10.
- Vos P, Hogers R, Bleeker M, Reijans M, van de Lee T, Hornes M, Frijters A, Pot J, Peleman J, Kuiper M, Zabeau M. ALFP: A new concept for DNA fingerprinting. *Nucleic Acids Res*. 1995; 23: 4407-4414.

List of abbreviations

AFLP	:	Amplified Length Polymorphism
CD	:	Coefficient of Deviation
CTAB	:	Cetyltrimethylammonium bromide
DMRT	:	Duncan's Multiple Range Test
DNA	:	De-oxyrribose Nucliec Acid

EDTA	:	Ethylenediaminetetraacetic acid
FAW	:	Fall armyworm
EPF	:	Entomopathogenic fungi
ITS	:	Internal Transcribed Spacer
FAO	:	Food and Agriculture Organisation
IPM	:	Integrated Pest Management
NrSf-1	:	<i>Nomuraea rileyi Spodoptera frugiperda</i>
PCR	:	Polymerase Chain Reaction
RAPD	:	Random Amplified Polymorphic DNA
NBAIR	:	National Bureau of Agricultural Insect Resources
NCBI	:	National Centre for Biotechnology Information
NDTP	:	De-oxynucleotide triphosphate
SE	:	Standard Error of Mean
SMAY	:	Sabouraud Maltose Yeast Extract Agar Medium
UASRBC Mr	:	University of Agricultural Sciences Raichur Biocontrol lab <i>Metarhizium rileyi</i>
UV	:	Ultraviolet rays

UNDER PEER REVIEW