

“A Case ~~study~~ Study on Investigation of Physico-chemical Properties of Dal Lake, Kashmir, India”

Abstract

Water quality is a key factor in determining the current condition of the freshwater ecosystem. The current analysis was conducted to assess the water quality status of Dal Lake. The lake was researched for 12 months, from March 2021 to February 2022, and a total of 17 physicochemical parameters were ~~analysed~~ analyzed at seven distinct sites at monthly intervals using established methodologies. The measured characteristics included air temperature (6.1°C-37.5°C) and water temperature (1.41°C-28.3°C), depth (1.1-3.1m), Secchi Disc transparency (0.3m-1.9m), specific conductivity (201 μScm^{-1} -364 μScm^{-1}), pH (7-7.9), Dissolved oxygen (4.4-9.2 mg/l), chloride (10-35 mg/l), free carbon dioxide (1.5-18.9 mg/l), total hardness (112-180 mg/l), calcium hardness (27.4-54.9 mg/l), magnesium hardness (17.4-31.8 mg/l), ammonia nitrogen (125-497 $\mu\text{g/l}$), nitrate-nitrogen (324-782 $\mu\text{g/l}$), nitrite-nitrogen (10-72 $\mu\text{g/l}$), orthophosphate (58-194 $\mu\text{g/l}$), and total phosphorus ranged from 193-568 $\mu\text{g/l}$. The investigation revealed that almost all of the above parameters indicate that the pollution load is increasing due to anthropogenic pressure, untreated sewage and solid garbage from residential areas, and ~~fertilisers~~ fertilizers containing nitrates and phosphates, all of which have contributed to the lake's eutrophic condition. As a result, prompt protective measures should be implemented to prevent further depletion.

Keywords: water quality, anthropogenic, P-value, Dal Lake.

INTRODUCTION

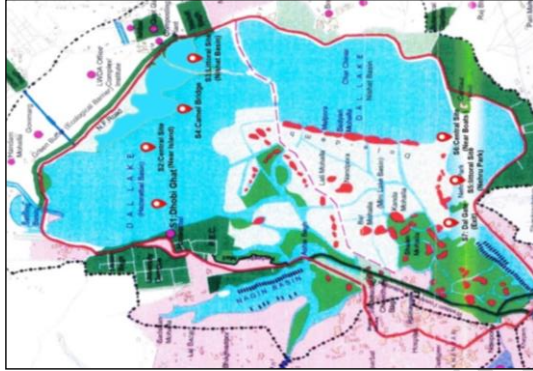
Kashmir Valley is located in the Himalayan Mountains and has a temperate environment with four ~~distinct~~ seasons. The ~~high-altitude~~~~high-altitude~~ valley is home to a broad range of freshwater bodies, with lakes serving a critical ecological role. The Kashmir Lakes are located in the flood plain of the Jhelum River, whose huge meanders have cut swampy lowlands out of the Karewas terraces (De-Terra & Paterson, 1939). These lakes are classed as glacial, alpine, or valley lakes based on their origin, altitudinal location, and biota, and they offer ~~a good~~~~an excellent~~ chance to study the structure and functional processes of an aquatic biological system (Zutshi *et al.*, 1972; Kaul, 1977; Trisal, 1985). These lakes range from oligotrophic to eutrophic, with some currently transitioning to eutrophication (Kaul, 1979). The Kashmir ~~valley's~~~~Valley's~~ water bodies offer a rich supply of natural products such as fish, fodder, and a range of economically significant plants. The valley has traditionally been regarded as having a high ~~level-of~~ floral and faunal diversity. However, unplanned ~~urbanisation~~~~urbanization~~, deforestation, soil erosion, and the reckless use of pesticides in horticulture and agriculture have resulted in a significant input of nutrients into these lakes from watershed areas. These anthropogenic influences not only decrease water quality, ~~but also have an impact on aquatic life in lakes,~~ ~~hastening their ageing~~ ~~but also have an impact on aquatic life in lakes,~~ ~~hastening their aging~~ process. As a result, the majority of lakes in the Kashmir valley are eutrophic (Kaul, 1979).

2. MATERIAL AND METHODS

2.1 STUDY AREA

Dal Lake is referred to as the "liquid heart" of Srinagar, the summer capital of Jammu & Kashmir. The location is between 34°07'N and 74°52'E, at an elevation of approximately 1584m above mean sea level (Kundangar and Abubakr, 2004). It is divided into four basins: Hazratbal, Nishat, Nehru Park, and Nigeen (Kundangar and Abubakr, 2001). Dal Lake's four basins ~~have substantial differences~~~~substantially differ~~ in area, volume, depths, and coastline development indices. The largest basin of Dal Lake is Hazratbal (3.54 km²), while the smallest is Nigeen (0.89 km²) (Zutshi and Vass, 1973). In terms of depth, the Nigeen basin is the deepest (5.7m), whereas Nehru Park is the shallowest (2.5m). Each basin has its own distinct character, with varying morphometry, water quality, and biodiversity (Abubakr and Kundangar, 2005). Dal Lake has a large catchment area; according to AHEC (ALTERNATE HYDRO ENERGY CENTRE_)(2000) estimates, the lake catchment area is 337.17 sq. ~~kms~~~~km~~, with TelbalDachigam accounting for 234.17 sq. ~~kms~~~~km~~ (69%), followed by Hill side 14 sq. kms, Srinagar city (North and Central) 14.5 sq. kms, and the lake 18.5 square kms. Telbal Nallah is the principal inflow canal for the Dal Lake, which drains mostly through the Harwan, Burzukot, and Mahadev ranges. Furthermore, 10-12 tiny ditches drain water into Dal Lake. The Telbal Nallah supplies 80% of the lake's total inflow, which is around 292×10⁶ m³. Two permanent outflow channels, one known as Dalgate exit and the other as Nallah Amir Khan, drain water from the lake (Kundangar and Abubakr, 2001). To evaluate the water quality of Dal Lake, seven locations were selected within the lake: Dhobi Ghat (S1), Central Site (Near Island) (S2), Littoral Site (Nishat Basin) (S3), Camel Bridge (S4), Littoral Site (Nehru Park) S5, Central Site (Near Boats) S6, and Dal Gate (Exit) S7 (Fig. 1).

Fig. 1: Map representing the overall view of sites within Dal Lake.



1.2 WATER SAMPLING:

Surface water samples were collected by hand from the sampling sites using one-litre polypropylene bottles that were clearly marked. At the sampling site, data like air temperature, water temperature, transparency, and depth were recorded. Winkler's modified method was employed to collect dissolved oxygen samples in separate D.O. bottles, and the samples were fixed on-site. Further analysis (pH, specific conductivity, D.O, Free CO₂, chloride, Total Hardness, Calcium Hardness, Magnesium Hardness, Orthophosphate, Total phosphorous, Ammonical-nitrogen, Nitrate-nitrogen, and Nitrite-nitrogen) of samples was carried out in the laboratory using the methods outlined in APHA (2012).

1.3 STATISTICAL ANALYSIS

The results obtained were analyzed with the help of the appropriate statistical methods using Microsoft Excel (Table. 1).

Commented [AV1]: Exemplify the methods (ANOVA, MANOVA ???)

Table 1: Overall Mean ± S.E values of Physico-chemical parameters at seven sites of Dal Lake.

Parameters	Sum of Squares	Df	Mean Square	F	Significance	Overall Mean ± S.E
A.T (°C)	62.13	18	3.45	0.13	P>0.05	19.66±0.24
W.T (°C)	32.65	18	1.81	0.07	P>0.05	16.85±0.14
Depth(m)	0.68	18	0.03	2.29	P<0.01	1.89±0.19
SDT (m)	3.19	18	0.17	2.97	P<0.01	0.82±0.07
SC (µScm ⁻¹)	43293.07	18	2405.17	3.11	P<0.01	263.72±7.56
pH	1.32	18	0.07	1.23	P>0.05	7.48±0.02
D.O(mg/L)	24.94	18	1.38	1.72	P>0.05	6.14±0.15
Cl ⁻ (mg/L)	335.73	18	18.65	0.69	P>0.05	18.75± 0.45

Free CO ₂ (mg/L)	255.57	18	14.19	2.35	P<0.01	8.18± 0.64
TH (mg/L)	6776.59	18	376.47	5.11	P<0.01	136.5±2.87
CaI H (mg/L)	1035.92	18	57.55	3.15	P<0.01	39.85± 0.69
Mg H (mg/L)	304.35	18	16.90	2.47	P<0.01	23.40± 0.61
NH ₄ -N (µg/L)	57236.04	18	3179.78	2.75	P<0.01	349.5±31.32
NO ₃ -N (µg/L)	309234.50	18	17179.69	1.81	P<0.05	557.6±23.15
NO ₂ (µg/L)	1771.00	18	98.38	0.84	P>0.05	136.5±2.87
PO ₄ -P (µg/L)	20117.21	18	1117.62	1.71	P>0.05	97.32±6.61
T.P (µg/L)	99090.85	18	5505.04	1.62	P>0.05	216.77±17.87

2. RESULTS AND DISCUSSION

3.1 AIR TEMPERATURE

In the present investigation, air temperature showed an increasing trend from winter to summer at all sites of the lake. A highly significant variation ($p<0.01$) was obtained in air temperature during different seasons ~~however, a non-significant; however, a nonsignificant~~ variation ($p>0.05$) was recorded between the sites of Dal Lake (Table 1). Air temperature ranged between 6.1°C in the month of December to 37.5°C in August (Fig. 2). The lowest air temperature in ~~winter season was due to short photoperiod, cold atmosphere while the highest during summer season was due to the winter season was due to a short photoperiod and cold atmosphere, while the highest during the summer season was due to a~~ clear atmosphere and higher solar radiation. Similar trends were observed by various researchers while working on different lakes in Kashmir such as Manasbal lake (Dar *et al.*, 2013, Gul *et al.*, 2021), Dal Lake (Lori *et al.*, 2014; Malik, 2015; Chashoo *et al.*, 2020 and Ruhela *et al.*, 2020), Ahansar lake (Javeed *et al.*, 2019).

3.2 WATER TEMPERATURE

In the present investigation, water temperature ranged between 1.41°C in the month of February to 28.3°C in August (Fig. 3). Seasonally, a highly significant variation ($p<0.01$) was obtained in the lake (Table 1). Solar radiation is the most significant source of heat for lakes, and the majority of it is absorbed directly by water (Wetzel, 2000). Similarly, a steady decrease in solar radiation may explain the drop in temperature from October to January, after which it begins to rise again from March onwards. This type of observation is in conformity with the earlier findings of Zuthsiet *et al.*, 1980 while ~~studying comparative limnology of nine lakes of Jammu and Kashmir; Ali et al., 2014 in Dal, Wular, Anchar~~ ~~studying comparative limnology of nine lakes of Jammu and Kashmir; Ali et al., 2014 in Dal, Wular, Anchar~~ and Manasbal Lake.

3.3 Depth

In the present study, ~~the~~ depth recorded in Dal Lake varied from 1.1m (in March) to 3.m (in August) (Fig. 4).

A highly significant variation was recorded seasonally and between the sites in the lake which was also confirmed statistically ($p < 0.01$) (Table 1). Kundangar and Abubakr (2006) ~~noticed fluctuations in water depth in Nigeen Lake and linked this to the opening and closing of Nigeen lake's~~ noticed fluctuations in water depth in Nigeen Lake and linked this to the opening and closing of Nigeen Lake's exit gate, as the water level of the lake is regulated by the lock gate. The depth variations in Dal Lake can also be linked to the opening and closing of gates at Dal Gate and to the water level fluctuations from winter to summer on account of precipitation received in the form of rain and snow (Yousuf *et al.*, 2006, Zutshi *et al.*, 1980 and Bhat *et al.*, 2013).

3.4 Secchi disc transparency

Transparency is an important criterion for defining the optical qualities of a body of water (Lorenzen, 1980). In the present investigation, Secchi disc transparency was recorded to vary from 0.3m (March) to 1.9m (August) (Fig. 5). A highly significant variation was recorded seasonally and between the sites in the lake which was also confirmed statistically ($p < 0.01$) (Table 1). ~~Lowest transparency was recorded at Dal gate exit which might be partly due to higher inflow of tourists, inflow of waste waters including night soil from house boats and hotels which are in abundance~~ The lowest transparency was recorded at the Dal gate exit, which might be partly due to the higher inflow of tourists and inflow of wastewater, including night soil from houseboats and hotels, which are in abundance, which might have caused reduced water transparency. Abubakr *et al.* (2018) also related lower transparency values with sewage contamination in Anchar Lake. Chashoo *et al.* (2020) also reported that the transparency in Dal Lake was lower at polluted sites ~~which may be ascribed mainly to disposal of partially treated liquid sewage from STPs directly into the lake as they contain colloidal particles, suspended particles and dissolved particles which cause~~ which may be ascribed mainly to the disposal of partially treated liquid sewage from STPs directly into the lake as they contain colloidal particles, suspended particles, and dissolved particles which cause a reduction in water transparency. However, at central site, the values of transparency were relatively higher which may be because of no direct impact of wastewater discharge as this site was relatively away from STPs and these sites are pelagic in nature with no direct anthropogenic pressures and less photosynthetic activity and sedimentation of suspended soil particles in a central site, the values of transparency were relatively higher, which may be because of no direct impact of wastewater discharge as this site was relatively away from STPs, and these sites are pelagic in nature with no direct anthropogenic pressures and less photosynthetic activity and sedimentation of suspended soil particles in the winter season.

3.5 Specific conductivity

Specific conductivity ranged from $201 \mu\text{Scm}^{-1}$ in the ~~month of September and October to~~ $364 \mu\text{Scm}^{-1}$ in July (Fig. 6). ~~A highly significant variation was recorded seasonally and between the sites in the lake~~ months of September and October to $364 \mu\text{Scm}^{-1}$ in July (Fig. 6). A highly significant variation was recorded seasonally and between the sites in the lake, which was also confirmed statistically ($p < 0.01$) (Table 1). The lowest Specific conductivity values ~~was were~~ found at the central site which may be because of no direct influence of the effluents discharged from the STPs and the presence of aquatic macrophytes along with higher ~~concentration concentrations~~ of D.O. at this these sites also play a significant role in lowering EC values as observed by Abubakr (2010) who reported that submersed macrophytes cause a diminution of dissolved

ions, thus signifying that high productivity with elevated levels of dissolved oxygen are responsible for reducing of conductivity. Higher specific conductivity values at ~~Dhobi Ghat site which might be due to the Dhobi Ghat site might be due to the~~ continuous discharge of domestic sewage from houses and fertilizer run-off in this area. Neves *et al.* (2003) related conductivity with the higher concentration of organic residue ~~originated-originating~~ with domestic sewage in river Cuiaba. Higher conductivity values can also be related to ~~a~~ lower volume of water at littoral sites. ~~Similar observation was made by Handoo (1987) and Kebede & Belay (1994)~~ ~~A similar observation was made by Handoo (1987) and Kebede & Belay (1994),~~ who reported that conductivity values increase as the volume of water decreases in the lake.

3.6 pH

pH is the negative logarithm of the hydrogen ion concentration of a solution and is the measure of whether the liquid is acidic or alkaline. In the present study, pH values depicted that the lake ~~to be was~~ well buffered as the values were ~~greater-more significant~~ than 7 ~~indicated-indicating~~ that the lake water is alkaline (Fig.7). All the sites remained ~~on-in the~~ alkaline range throughout the study period indicating that good buffering capacity of lake waters without showing much change in pH values. The presence of calcium-rich rocks in catchment areas may contribute to the alkaline nature of Kashmir lakes (Zutshi *et al.*, 1980). The conversion of CO₂ to organic carbon by photosynthesis causes a rise in pH at high water temperatures (Araoye, 2009) and lower pH values were recorded during ~~the~~ winter season which could be ascribed to low photosynthetic activity, as well as the dominance of decomposition over photosynthesis which results in CO₂ liberation, and hence causes pH to fall (Otsuki and Wetzel, 1972). Statistically, no significant variation ($p > 0.05$) was recorded between these sites (Table 1). Singh & Mahajan (1987), ~~-)~~ and Abubakr *et al.* (2014) also suggested the higher pH may be because of increased photosynthetic activity of phytoplankton or macrophytes and high input of sewage.

3.7 Dissolved oxygen

In aquatic ecosystems, oxygen is present in a dissolved form. Dissolved oxygen (DO) in the water is necessary for respiration, and ~~thus, thus,~~ is necessary for aquatic life to exist. During the present study, the dissolved oxygen varied from 4.4mg/l in the ~~month of April, June and August to 9.2mg/l⁺ in December (Fig. 8).~~ ~~A highly significant variation was recorded seasonally in the lakemonths of April, June, and August to 9.2mg/l⁺ in December (Fig. 8).~~ ~~A highly significant variation was recorded seasonally in the lake,~~ which was also confirmed statistically ($p < 0.01$) (Table 1). High D.O was recorded during ~~winter season because cold water contains more oxygen than warm water since, DO is inversely related to water temperature (Hynes, 1960) and it can be also~~ the winter season because cold water contains more oxygen than warm water since DO is ~~inversely related to water temperature (Hynes, 1960), and it can also be~~ assigned to low biological activity (Vass *et al.*, 1977; Qadri *et al.*, 1981). Abubakr *et al.* (2018) also related high DO with increased solubility of oxygen at lower ~~temperature~~temperatures. This is known as the law of solubility of gases. Jin *et al.* (2017) related high D.O. to photosynthesis of plants ~~/micro-plants~~microplants in the water. The low D.O. values recorded at ~~Dal gate (Exit) site, being the centres for water sports and shikara rides, are heavily loaded with hotels, restaurants and street vendors~~the Dal gate (Exit) site, being the centers for water sports and shikara rides, are heavily loaded with hotels, restaurants, and street vendors, causing continuous inflow of pollutants

into the lake and thus reducing its oxygen levels. The lower value of dissolved oxygen can also be attributed to the higher rate of organic matter breakdown which is controlled by temperature (Singh *et al.*, 2002). Yousuf & Shah (1988), Kaur *et al.* (2003), Bhat *et al.* (2013), Bashir *et al.* (2017), and Abubakr *et al.* (2018) have also related low D.O state with high organic matter and sewage which consumes oxygen for decomposition in different lakes in Kashmir.

3.8 Chloride

During the present study, chloride content was recorded to vary from 10mg^l⁻¹ (December) to 35.0 mg^l⁻¹ (July) (Fig.9) and showed a significant difference ($p < 0.05$) during different seasons (Table 1). Higher value of chloride was found at the littoral sites of Nehru Park basin and littoral site of Nishat basin could be due to direct discharge of night soil from the house boats. A higher value of chloride was found at the littoral sites of Nehru Park basin, and the littoral site of Nishat basin could be due to the direct discharge of night soil from the houseboats into the lake and from other human settlements in the interiors of the Dal Lake. Discharge of partially treated sewage effluents loaded with high concentration of chloride can also be one of the reasons of concentrations of chloride can also be one of the reasons for its enhancement. Blum, 1957 and Murthuzasab *et al.*, 2010 also suggested that elevated chloride levels in aquatic bodies might be caused by sewage. Abubakr & Kundangar (2008) while working on number of Kashmir Lakes reported higher values of chloride and attribute it to the presence of organic matter while Mathew & Vasudavan, while working on a number of Kashmir Lakes, reported higher values of chloride and attributed it to the presence of organic matter, while Mathew & Vasudevan (2000) related the elevated chloride to the flow of sewage in river Pamba. Chashoo *et al.* (2020) also reported that a high concentration of chloride content due to also reported that a high concentration of chloride content is due to the direct discharge of effluent from the STPs in Dal Lake. The lowest chloride concentration was recorded at the central site which can be explained by no direct influence of partially treated sewage effluents from STP and can also be attributed to the dilution effect of rain (Chashoo *et al.*, 2020). Prasannakumari *et al.* (2000) also observed low chloride content in waters devoid of sewage contamination.

3.9 Free carbon dioxide

One of the most essential processes in biological systems is the hydration of carbon dioxide. During the present study, free CO₂ was recorded to vary from 1.5mg^l⁻¹ in the month of June to 18.9mg^l⁻¹ in February (Fig.10). A highly significant variation was recorded seasonally and between the sites in the lake which was also confirmed statistically ($p < 0.01$) (Table 1). The lowest value might be attributed to the rate of photosynthetic activity in these systems. As the weather warms, the rate of photosynthesis rises, and the amount of free CO₂ in the atmosphere drops. The major reason for the loss of CO₂ is usage of carbon dioxide by submersed macrophytes and phytoplankton in the usage of carbon dioxide by submersed macrophytes and phytoplankton in the summer season (Yousuf, 1979). Higher values of free carbon dioxide during winter could be attributed to the high decomposition of organic matter (Yousuf *et al.*, 1986)

3.10 Total hardness

In the present investigation, total hardness value was recorded to vary from 110mg^l⁻¹ in the month

of September to 180mgL⁻¹ in January (Fig. 11). A highly significant variation was recorded seasonally and between the sites in the lake which was also confirmed statistically ($p < 0.01$) (Table 1) which could be possibly due to the sort of minerals in the soil as well as the volume of lake water that comes into contact with these minerals (Tepe *et al.*, 2005). Higher hardness values in Dal Lake might be caused by calcium carbonate precipitation, and photosynthetic activity by primary producers (Ahmad *et al.*, 2020). The raised hardness value in Dal Lake is due to the large amount of calciferous runoff coming from the catchment area. Similar results were obtained ~~in Zutshi and Vass (1973)~~ by Zutshi and Vass (1973), who reported that calcium is the major cation that contributes to overall hardness in Lake Manasbal. Waters with hardness levels ranging from 0-75 mg/L are classified as soft waters, 75-150 mg/L as moderately hard waters, and 151-300 mg/L as hard waters (Sawyer *et al.*, 1967). The total hardness of the lake was quite high indicating their "hard water" nature.

3.11 Calcium hardness

Calcium and magnesium are key elements in aquatic ecosystems that play a vital role in biogeochemical processes. In the present study, Calcium hardness ~~value was value was~~ recorded to vary from 27.4mgL⁻¹ in the month of March to 54mgL⁻¹ in February (Fig. 12). However, a highly significant variation was recorded seasonally and between the sites in the lake, which was also confirmed statistically ($p < 0.01$) (Table 1) which could be due to ~~the abundance~~ the abundance of ~~lime rich~~ lime-rich rocks in the catchment area and also due to increased runoff from the catchment region, which is dominated by calcareous material that might be partially responsible for the higher Ca²⁺ level in Dal lake. The calcium hardness of a lake can vary throughout the year due to various factors, including temperature and water chemistry. High calcium hardness was recorded in ~~winter season as~~ the winter season as it's possible for the calcium hardness to be higher in colder winter because cold water can hold more dissolved minerals like calcium. When water temperatures drop, the solubility of minerals generally increases, which can lead to higher calcium levels in the water. Also, the higher concentrations of both Ca²⁺ and Mg²⁺ in Dal Lake can be attributable to their leaching from agricultural soils. As the farming practises in the Telbal sub-agricultural catchment's zones are adding up the calcium content in the lake (Ishaq and Kaul, 1989). Kundangar and Abubakr (2006) reported the high levels of calcium in water and ~~presence of marl on the leaves and stems of the macrophytes in all the basins of Dal Lake~~ the presence of marl on the macrophytes' leaves and stems in all Dal Lake's basins.

3.12 Magnesium hardness

Magnesium is often associated with calcium in all kinds of waters; however, its concentration is lower than calcium (Venkatasubramani and Meenambal, 2007). During the present study, Magnesium hardness ~~value was recorded to vary from 17.4mgL⁻¹ in the month of September to 32.9mgL⁻¹ in February (Fig. 13). A highly significant variation was recorded seasonally and between the sites in the lake~~ was recorded to vary from 17.4mgL⁻¹ in the month of September to 32.9mgL⁻¹ in February (Fig. 13). A highly significant variation was recorded seasonally and between the sites in the lake, which was also confirmed statistically ($p < 0.01$) (Table 1). The lower magnesium content could be due to ~~increase precipitation and snowmelt, leading to greater dilution of lakes, thus reduces concentration of magnesium ions while as~~ increased precipitation and snowmelt, leading to greater dilution of lakes, thus reducing the concentration of magnesium ions, while the higher magnesium content might be due to increased agricultural run-off from the catchment and through

floating gardens. These levels can also be attributed to the release of this cation from decomposing macrophytes which are left unattended/unlifted. [Mushatq et al., 2013](#) also reported higher Mg levels due to the enhanced agricultural run-off from [Mushtaq et al. \(2013\)](#) also reported higher Mg levels due to the enhanced agricultural run-off from the catchment through Telbal and from floating gardens located in Dal Lake. However, low magnesium content is possibly due to plant absorption in the synthesis of chlorophyll-porphyrin metal complexes and enzymatic transformation in Manasbal Lake (Wetzel, 1975). Sewage inflows and minerals resulting from soil erosion are the principal sources of magnesium in the lake.

3.13 Ammonical-nitrogen

In the present study, ammonical-nitrogen values were recorded to vary from 125µg/Lin the month of March to 494µg/Lin July (Fig. 14). Minimum values of ammonical nitrogen were recorded at Central site (near island) while values were recorded to vary from 125µg/Lin in the month of March to 494µg/Lin in July (Fig. 14). Minimum values of ammonical nitrogen were recorded at the Central site (near the island) while the maximum value was recorded at Dal gate (exit) site. The raised level of ammonical nitrogen is due to discharge of wastes from the hotels, house-boats and also from human settlements in the discharge of wastes from the hotels, houseboats, and also from human settlements in the catchment area. These findings are in the conformity with the findings of Zuber (2007) who also reported the fluctuations in the values of ammonical nitrogen could be due to conformity with the findings of Zuber (2007), who also reported the fluctuations in the values of ammonical nitrogen could be due to the decomposition of organic matter in Dal Lake. The higher values of ammonical nitrogen are indicating significant level of sewage contamination in the lake and it could be due to indicate a significant level of sewage contamination in the lake, and it could be due to the excessive decomposition of organic matter and runoff from the floating gardens. Bu *et al.* (2014), and Ding *et al.* (2016) have observed that an increased human activity leads to a rise in the concentration of ammonium nitrogen in freshwater. Lower values of ammonia-nitrogen may be related to no direct influence of partially treated effluents from STPs and can also be related to presence of proper conditions for natural nitrification process in Dal Lake (Chashoo *et al.* 2020). It can also be related to presence of proper conditions for the presence of proper conditions for the natural nitrification process. A highly significant variation was recorded seasonally and between the sites in the lake which was also confirmed statistically ($p < 0.01$) (Table 1).

3.14 Nitrate- nitrogen

Nitrogen is essential for all living beings and the primary nutrient that limits life on our planet (Kuypers *et al.*, 2018). Nitrate is the most abundant nitrogen form, and its availability is determined by a variety of transformative reactions, including nitrification, denitrification, and biological absorption (Kendall *et al.*, 2007). During the present study, nitrate-nitrogen values were recorded to vary from 324µg/Lin the month of December to 782µg/Lin May (Fig. 15). A significant variation was recorded seasonally and between the sites in the lake in the month of December to 782µg/Lin in May (Fig. 15). A significant variation was recorded seasonally and between the sites in the lake, which was also confirmed statistically ($p < 0.05$) (Table 1). The major causes of high nitrate concentrations could be due to partially treated sewage released from STP, agricultural, household run-off, and organic load from the catchment areas. According to Sylvester (1961) the

domestic sewage is primarily responsible for higher nitrate concentrations in fresh waters. The findings are ~~conformity with Wang and Evans (1970); Singh and Choudhary (2013)~~in conformity with Wang and Evans (1970), Singh and Choudhary (2013), and Yousuf (1979). Abubakr & Kundangar (2004) also ascribed the increased nitrogen values to sewage contamination in Dal Lake. A higher concentration of nitrate was reported in Dal waters (Kundangar and Abubakr, 2006). Chashoo *et al.*, 2020 reported higher values of nitrate could be related to ~~release of effluent partially treated from STPs and due to the~~ release of effluent partially treated from STPs and due to the runoff of fertilizers from adjacent areas. However, Gorski *et al.* (2019) stated that ~~the high nitrate levels are observed during autumn and winter when temperature is low and biological activity is limited and there was a significant decrease in the nitrate levels when the improvement of sewage treatment technology in Warta river~~high nitrate levels are observed during autumn and winter when temperature is low and biological activity is limited, and there was a significant decrease in the nitrate levels when the improvement of sewage treatment technology in Warta River in Poland. Lower nitrate-nitrogen concentration in Dal Lake may be attributed to ~~dilution factor of water and no direct impact of the~~ dilution factor of water and no direct impact of the discharge of effluents from STP. Jaji *et al.* (2007) stated that unpolluted natural waters usually contain only minute amounts of nitrate while studying the water quality of ~~Ogun river~~the Ogun River.

3.15 Nitrite-nitrogen

In the present investigation, nitrite-nitrogen ~~value was~~ value was recorded to vary from 10µg/Lin in the month of December to 72µg/Lin in September (Fig. 16). A highly significant variation was recorded seasonally ($p < 0.01$) and a significant variation was recorded between the sites in the lake which ~~was~~ were also confirmed statistically ($p < 0.05$) (Table 1). Nitrite concentrations in surface waters of approximately 10 ug/l have been considered an indicator of sewage pollution (Williams and Eddy 1986). The lower level of nitrite in the lake is because the nitrogen exists in the more reduced (ammonia) or more oxidized (nitrate) forms. The low concentration ~~nitrite values in the lake may be owing to~~ of nitrite values in the lake may be owing to the short residence time in water (Malhotra and Zanoni, 1970). Chashoo *et al.* (2020) reported lower nitrite-nitrogen values at unpolluted sites can be related to less to no impact of effluent discharge from STP and proper supply of oxygenation in waters for the natural process of nitrification i.e., conversion of the relatively ~~instable-unstable~~ form of nitrogen (i.e., nitrite) into stable form (i.e., nitrate). The major causes of high nitrate concentrations could be due to partially treated sewage released from STP, agricultural, household run-off, and organic load from the catchment areas. According to Sylvester (1961) ~~the~~ domestic sewage is primarily responsible for higher nitrate concentrations in fresh waters. The findings are ~~conformity with Wang and Evans (1970); Singh and Choudhary (2013)~~in conformity with Wang and Evans (1970), Singh and Choudhary (2013), and Yousuf (1979). A higher concentration of nitrate was reported in Dal waters (Kundangar and Abubakr, 2006). Chashoo *et al.* (2020) reported higher nitrite-nitrogen values at polluted sites of Dal Lake could be related to ~~discharge of sewage effluent from STPs, absence of condition for proper nitrification process and leaching of nitrogen rich~~ the discharge of sewage effluent from STPs, the absence of conditions for a proper nitrification process, and the leaching of nitrogen-rich fertilizers into the lake.

3.16 Orthophosphate

In the present study, orthophosphate values were recorded to vary from 58 µg/L in the month of December and March to 193 µg/L in July (Fig. 17). The lower concentrations of ortho-phosphate at the central site (near the island) can be related to no direct influence of STP's effluent discharge, decreased anthropogenic activities and the dilution factor of the water (Chashoo *et al.*, 2020). However, higher concentration at Dhobi ghat site and Dal gate (Exit) is possibly due to higher amounts of domestic wastes, detergents and agricultural effluents being discharged into the lake and are considered as the higher concentration at the Dhobi ghat site and Dal gate (Exit) is possibly due to higher amounts of domestic wastes, detergents, and agricultural effluents being discharged into the lake, which are considered the major significant sources of phosphorus. And it may be also related to the use of detergents and dyes in the catchment areas. It may also be related to the use of detergents and dyes in the catchment areas, which find their way into the waters. Hutchinson (1967) linked elevated phosphorus levels to sewage pollution. Abubakr *et al.* (2018) also attributed the higher orthophosphate to the influx of sewage, and agricultural runoff contaminated with phosphate (applied as fertilizers) in Anchar Lake. Chashoo *et al.* (2020) also reported higher ortho-phosphate values can be attributed to inadequate treatment of sewage which is loaded with soap detergent and fertilizers and is discharged at, which is loaded with soap detergent and fertilizers and is discharged at the periphery of the lake from STPs. A highly significant variation was recorded seasonally and between the sites in the lake which was also confirmed statistically ($p < 0.05$) (Table 1). The highest value of orthophosphate was recorded at Dhobi ghat site which is due to washing clothes along banks of lake with thick foamy detergents was the Dhobi ghat site, which is due to washing clothes along the banks of the lake with thick foamy detergents observed on the surface water. Our results are in agreement with Maulood and Saadalla (1992), who attributed high concentrations of ortho-phosphate to the wastewater with high content of soap detergents and fertilizers and the hydrolysis of polyphosphates and revert to the orthophosphate forms in Saklawia irrigation channel in Baghdad. Similar A similar observation was reported by Malik *et al.* (2017).

3.17 Total phosphorous

Phosphorus is an essential component of nucleic acids and many intermediary metabolites, such as sugar phosphates and adenosine phosphates, which are an integral part of the metabolism of all life forms. Phosphorus only occurs in the pentavalent form in aquatic systems. During the present study, total phosphorous values were recorded to vary from 201 µg/L in the month of March to 579 µg/L in September (Fig. 18). The low phosphorous concentration is possibly due to low discharge of sewage, detergents, fertilizers used in agricultural activities from the catchment areas whereas, the higher values of total phosphorous might be attributed to the widespread use of phosphate fertilisers-fertilizers in agricultural activities and sewage pollution from the catchment areas. High phosphate concentrations in Dal water were attributed by Khan *et al.* (2014) to sewage pollution, disruptions caused by human activity in the catchment region. Solim and Wanganeo (2008) also reported that phosphate fertilizers and organic manure is prevalent in the agricultural areas which result in are prevalent in agricultural areas, which results in the transport of soil laden with various fractions of total phosphorous in Dal Lake. Solim and Wanganeo (2008) also reported that phosphate fertilizers and organic manure is prevalent in the agricultural areas which result in are prevalent in

agricultural areas, which results in the transport of soil laden with various fractions of total phosphorus in Dal Lake. Sharma (2015a) and Sharma (2015b) also reported higher phosphorus level in Dal Lake is related to the direct discharge of untreated human wastes from houseboats, sewage disposal that the higher phosphorus level in Dal Lake is related to the direct discharge of untreated human wastes from houseboats, sewage disposal, and illegal settlements adjoining the lake. Thus, the present study strongly suggests that effluent zone of STPs is highly eutrophic and it needs an the effluent zone of STPs is highly eutrophic and it needs immediate attention. Chashoo *et al.* (2020) reported higher T.P concentration can be related mainly to the influx of partially treated sewage effluents from STP directly into the Dal Lake. However, in addition to this increased agricultural activities and use of phosphate-based, increased agricultural activities and use of phosphate-based fertilizers may be the cause of increased levels of phosphorus at polluted sites. A highly significant variation was recorded seasonally and between the sites in the lake which was also confirmed statistically ($p < 0.01$) (Table 1). ———

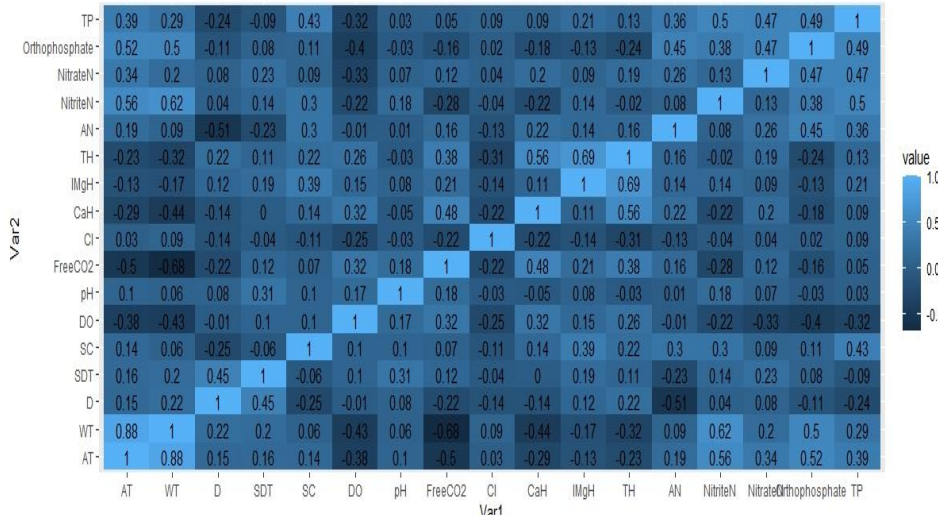
According to Welch (1952), a water body is eutrophic if the total phosphorus content is between 20-30 $\mu\text{g/l}$. As per this classification, Dal Lake can be put under the eutrophic category. The correlation among physico-chemical parameters is given in table-Table 2.

Formatted: Indent: Left: -0.3"

4. CONCLUSION

According to the current research, the effects of various environmental stresses and their consequences can be seen in Dal Lake. These changes are due to anthropogenic forces, natural factors, and a lack of adequate management. However, because Dal Lake is an urban lake, the stress is more noticeable. The possible reason being is a more rapid increase in the human population being settled in the immediate catchment area of the lake, leading to an increase in developmental activities and thus putting more pressure on the lake in terms of the release of higher level-levels of biologically important nutrients (N&P) and also due to inefficient/incomplete treatment of wastewaters by STP's, which is directly releasing sewage in this water body, which has resulted in changing the trophic condition of the Dal Lake. Chashoo *et al.* (2020) also reported similar findings. Although, However, the Lake Conservation and Management Authority (LCMA) is managing the lake through a number of interventions. However, there is a need of well planned long term experimental research for well-planned long-term experimental research, which requires training in appropriate methodology and development of infrastructure. Such measures shall go a long way in managing the quality of water and aquatic biological resources for sustainable development of this water body. Empowerment of LCMA to enforce the rules and regulations with proper legislation to curb the lake encroachments and violations is necessary for the success of Dal Lake restoration programme The empowerment of LCMA to enforce the rules and regulations with proper legislation to curb the lake encroachments and violations is necessary for the success of the Dal Lake restoration program.

Table 2: Correlation among various physico-chemical parameters of Dal Lake



**Correlation is significant at the 0.01 level; *. Correlation is significant at the 0.05 level

UNDER PEER REVIEW

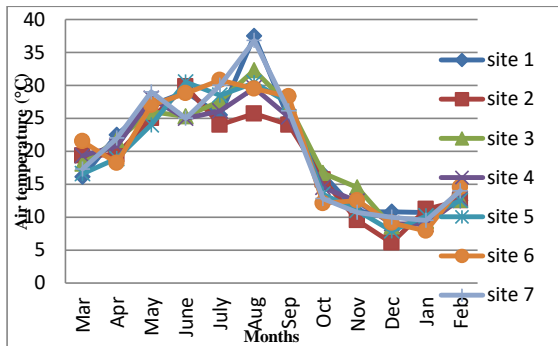


Fig. 2, showing monthly variation in Air temp. (°C) at different sites of Dal Lake

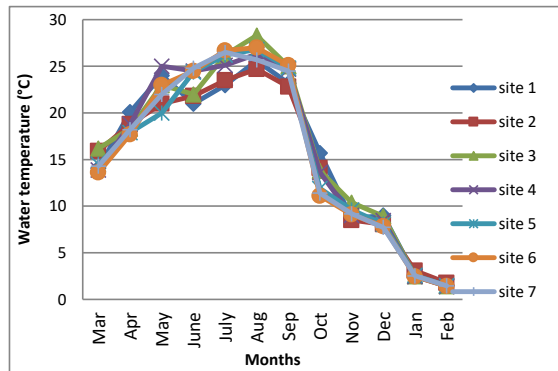


Fig. 3, showing monthly variation in water temperature (°C) at different sites of Dal Lake.

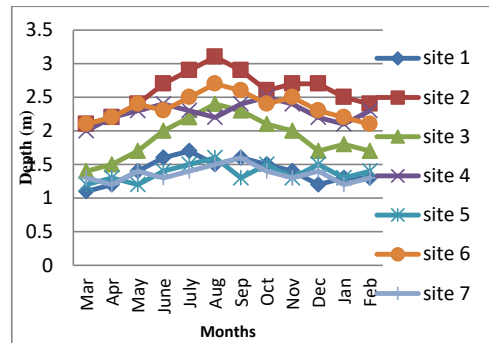


Fig. 4, showing monthly variation in depth (m) at different sites of Dal Lake.

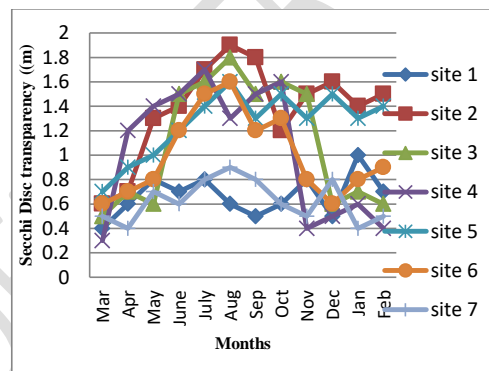


Fig. 5, showing monthly variation in Secchi Disc transparency (m) at different sites of Dal Lake.

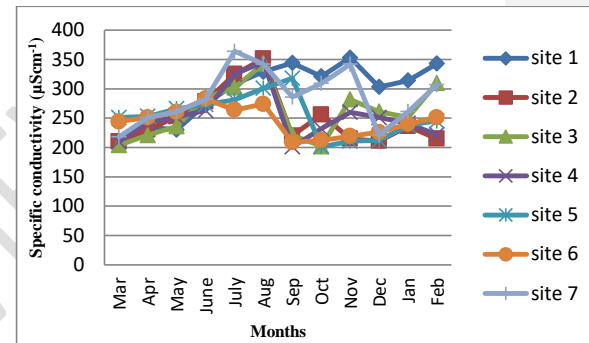


Fig. 6, showing monthly variation in Specific conductivity (µScm⁻¹) at different sites of Dal Lake

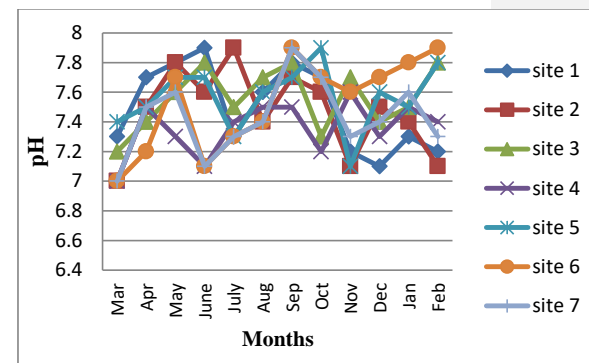


Fig. 7, showing monthly variation in pH at different sites of Dal Lake.

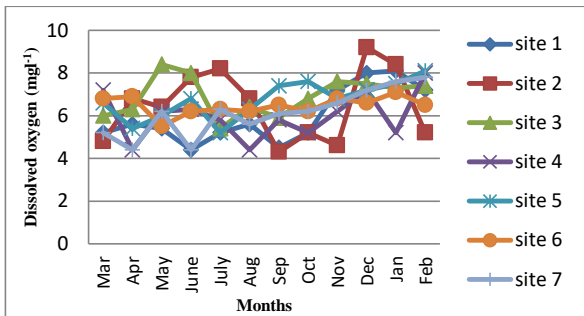


Fig. 8, showing monthly variation in Dissolved oxygen (mg l^{-1}) at different sites of Dal Lake.

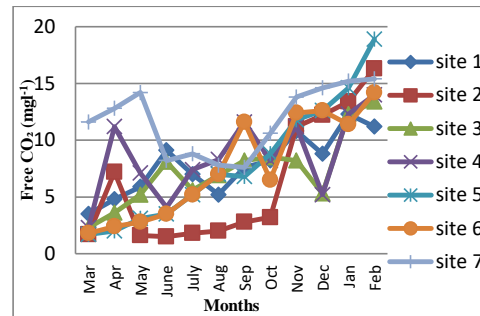


Fig.10, showing monthly variation in Free CO_2 (mg l^{-1}) at different sites of Dal Lake.

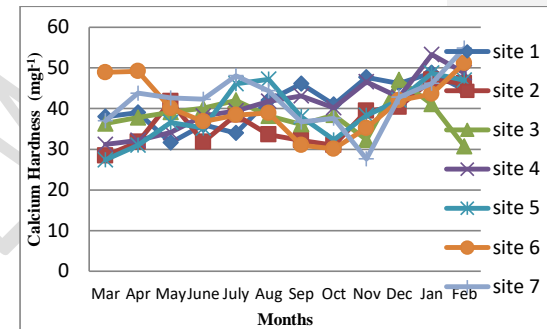


Fig. 12, showing monthly variation in Calcium Hardness (mg l^{-1}) at different sites of Dal Lake.

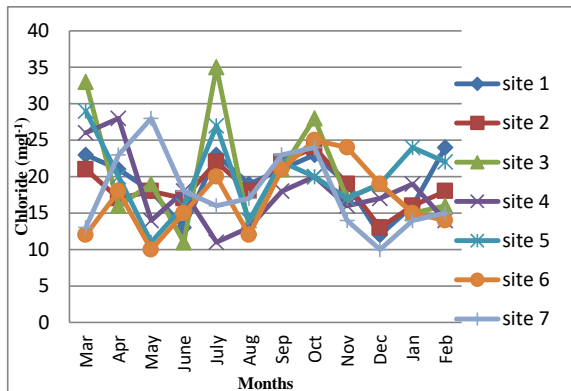


Fig. 9, showing monthly variation in Chloride (mg l^{-1}) at different sites of Dal Lake

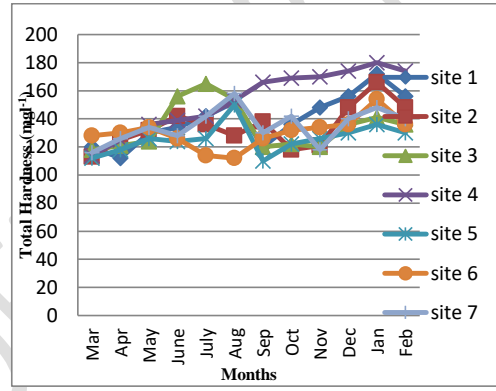


Fig. 11, showing monthly variation in Total Hardness (mg l^{-1}) at different sites of Dal Lake .

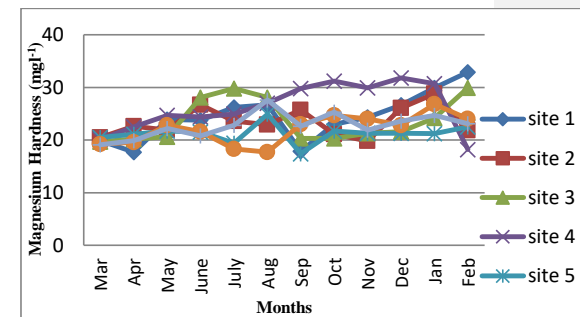


Fig. 13, showing monthly variation in Magnesium Hardness (mg l^{-1}) at different sites of Dal Lake.

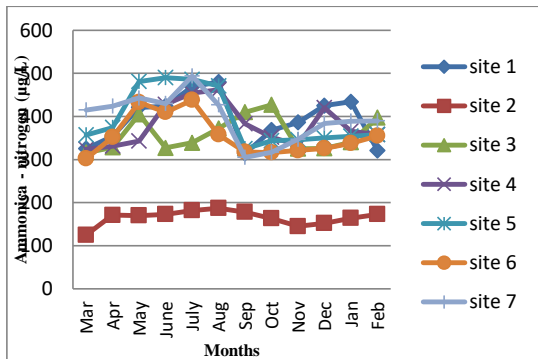


Fig. 14, showing monthly variation in Ammonical-nitrogen ($\mu\text{g/L}$) at different sites of Dal Lake.

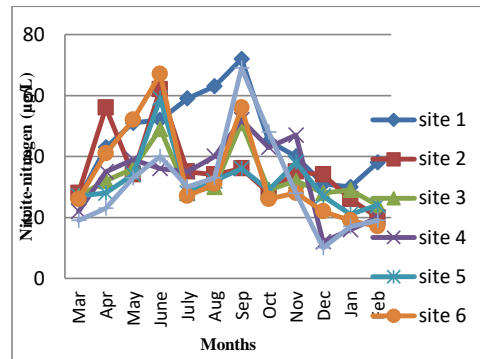


Fig. 16, showing monthly variation in Nitrite-nitrogen ($\mu\text{g/L}$) at different sites of Dal Lake.

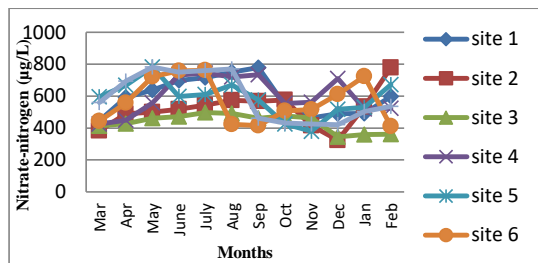


Fig. 15, showing monthly variation in Nitrate-nitrogen ($\mu\text{g/L}$) at different sites of Dal Lake.

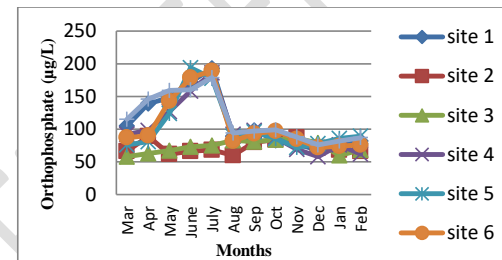


Fig. 17, showing monthly variation in Orthophosphate ($\mu\text{g/L}$) at different sites of Dal Lake.

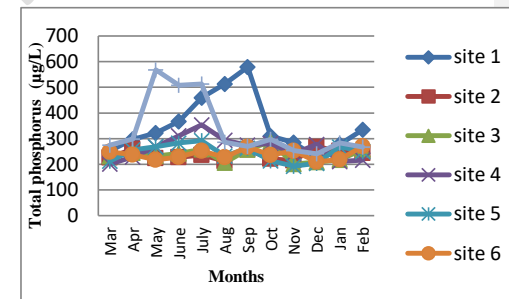


Fig. 18, showing monthly variation in Total phosphorus ($\mu\text{g/L}$) at different sites of Dal Lake.

Disclaimer (Artificial intelligence)

Option 1:

Author(s) hereby declare that NO generative AI technologies such as Large Language Models (ChatGPT, COPILOT, etc) and text-to-image generators have been used during writing or editing of manuscripts.

Option 2:

Author(s) hereby declare that generative AI technologies such as Large Language Models, etc have been used during writing or editing of manuscripts. This explanation will include the name, version, model, and source of the generative AI technology and as well as all input prompts provided to the generative AI technology

Details of the AI usage are given below:

- 1.
- 2.
- 3.

REFERENCES

- Abubakr, A. 2010. Sanative variations in physico-chemical characteristics of Rudrasagar wetland – a Ramsar Site, Tripura, North East, India. *Research Journal of Chemical Sciences* 4(1): 31-40.
- Abubakr, A. and Kundangar, M. R. D. 2004. Bacteriological studies and trophic status of Himalayan lake- Dal. *Journal of research and development*, 4:45-57.
- Abubakr, A. and Kundangar, M. R. D. 2005. Bacterial dynamics of Dal Lake, a Himalayan temperate freshwater lake. *Nature Environment and Pollution Technology*, 4:291-298.
- Abubakr, A. and Kundangar, M. R. D. 2008. Ecological status of some Floodplain Lakes within Jhelum river basin, Kashmir. *Nature Environment and Pollution Technology*, 7(4):791-728.
- Abubakr, A., Gojar, A. A., Balkhi, M. H. and Malik, R. 2018. Macro-invertebrates (Annelida; Oligochaeta) as bio-indicator of water quality under temperate climatic conditions. *International Journal of Pure and applied Bioscience*, 6(1): 726-737.
- Abubakr, A., Maryam, S., Kundangar, M. R. D. and Balkhi, M. H. 2014. In a litre of lake water. *Pollution Research*, 33 (1):111-115.
- AHEC. 2000. Conservation and Management of Dal-Nigeen Lake; *Detailed Project Report submitted to Ministry of Environment and Forests, GOI and Government of J&K*, 1-5.

- Ahmad, T., Gupta, G., Sharma, A., Kaur, B., Alsahli, A. A. and Ahmad, P. 2020. Multivariate Statistical Approach to Study Spatiotemporal Variations in Water Quality of a Himalayan Urban Fresh Water Lake. *Water* **12**(9): 2365
- Ali, U. 2014. Stress of environmental pollution on zooplanktons and their comparative studies in Dal Lake, Wular lake Ancharlake and Manasbal Lake, in Srinagar, Kashmir. *Int. J. Eng. Sci.*, **3**: 39–44
- American Public Health Association (APHA). 2012. Standard methods for examination of water and wastewater. 22nd Edn. Washington DC, USA.
- Araoye, P. A. 2009. The seasonal variation of pH and dissolved oxygen (DO₂) concentration in Asa lake Ilorin, Nigeria. *International Journal of Physical Sciences* **4**(5): 271-274.
- Badar, B and Romshoo, S. A. 2007. Assessing the pollution load of Dal Lake using geospatial tools. In: *Proc. of TAAL 2007: the 12th World Lake Conference* pp. 668–679
- Bashir, M., Chauhan, R., Amin, N., Mir, M. F., Ganaie, M. A., Farooq, R., Tabasum, S. and Shah, A. H. 2017. Impact of anthropogenic pressure on water quality and their co-relations with the trophic status of Ancharlake. *International Journal of Fauna and biological Studies*, **4**(4):112-119.
- Bhat, S. A., Meraj, G., Yaseen, S., Bhat, A. R. and Pandit, A. K. 2013. Assessing the impact of anthropogenic activities on spatio-temporal variation of water quality in Anchar Lake, Kashmir Himalayas. *International Journal of Environmental Science* **3**(5):1625-1640.
- Blum, J. L. 1957. An ecological study of the algae of the Saline River, Michigan. *Hydrobiologia* **9**(4): 361-408.
- Bu, H., Meng, W., Zhang, Y. and Wan, J. 2014. Relationships between land use patterns and water quality in the Taizi River basin, China. *Ecological Indicators* **41**: 187-197.
- Chashoo, H.F., Abubakr A., Balkhi, M. H., Shah, T.H., Malik, R., Bhat, B.A and Gul, S. (2020). Impact of sewage treatment plant effluent on water quality of Dal Lake, Kashmir, India. *International Journal of Chemical Studies*, **8**(2): 1915-1921.
- Dar, J. A., Mir, M. F., Bhat, N. A. and Bhat, M. A. 2013. Pollution Studies of a Monomictic Lake, Srinagar, Jammu and Kashmir. India. *Forest Research*, **2**(110):2.
- De-Terra, H. and Paterson, T. T. 1939. Studies on the ice age in India and associated human culture. Carnegie Institute, Washington.
- Ding, J., Jiang, Y., Liu, Q., Hou, Z., Liao, J., Fu, L. and Peng, Q. 2016. Influences of the land use pattern on water quality in low-order streams of the Dongjiang River basin, China: a multi-scale analysis. *Science of the total environment* **551**pp. 205-216.

- Gorski, J., Dragon, K. and Kaczmarek, P. M. J. 2019. Nitrate pollution in the Warta River (Poland) between 1958 and 2016: trends and causes. *Environmental Science and Pollution Research*, **26**(3):2038-2046.
- Gul, S., Balkhi, M. H., Abubakr, A., Shah, T. H., Bhat, B. A., Bhat, F. A., & Javeed, H. (2021). A study on physico-chemical parameters of Manasbal Lake, Kashmir, India. *The Pharma Innovation Journal*, **10**(9), 554–559
- Handoo, J. K. 1987. Chemical parameters used in the evaluation of eutrophication and ecological state of Jammu and Kashmir. pp.363-397. In: *Environmental Issues and Researches in India* (S.K.Agaral and R.K.Garg, eds.).Himanshu Publications, Udaipur,India.
- Hutchinson, G. E. 1967. *A treatise on limnology, Introduction to Lake biology and the limnoplankton*. John Wiley and Sons. Inc. NY **2**:1115.
- Ishaq M. and Kaul V. 1989. Phosphorus load-concentration relationship in Dal lake, a high-altitude marl lake in the Kashmir Himalayas. *Hydrobiol.* **74**(3): 321-328.
- Jaji, M. O., Bamgbose, O., Odukoya, O. O. and Arowlo, T. A. 2007. Water quality assessment of Ogun River, south west Nigeria. *Environ. Monit. Assess.*, **133** (1-3):447-482.
- Javeed, H., Abubakr, A., Balkhi, M. H., Bhat, F.A., Bhat, B.A., Malik, R. and Gul, S. 2019. Trophic assessment of a semi-drainage Himalayan lake. *Journal of Pharmacognosy and Phytochemistry*, **8**(1):1748-1755.
- Jin, Z., Zhang, X., Li, J., Yang, F., Kong, D., Wei, R., Huang, K. and Zhou, B. 2017. Impact of wastewater treatment plant effluent on an urban river. *Journal of Freshwater Ecology*, **32**(1):697-710.
- Kaul, V. 1977. Limnological survey of Kashmir lakes with reference to trophic status and conservation. *Int. J India Environ Sci.* **3**: 29-44
- Kaul, V. 1979. Water characteristics of some fresh water bodies of Kashmir. *Curr Trends Life Sci.* **9**: 221-246.
- Kaur, H., Syal, J. and Dhillon, S. S. 2003. Impact of fertilizer factory wastes on physico-chemical and biological features of Satlujriver. In: *Aquatic Ecosystems* (Ed. A. Kumar). APH Publishing Corporation, New Delhi, India. pp.71-81.
- Kebede, E. and Belay, A. 1994. Species composition and phytoplankton biomass in a tropical African lake (Lake Awassa, Ethiopia). *Hydrobiologia.* **288**:13-32.
- Kendall, C., Elliott, E. M. and Wankel, S. D. 2007. Tracing anthropogenic inputs of nitrogen to ecosystems. *Stable isotopes in ecology and environmental science* **2**(1): 375-449.
- Khan, M. U. Z., Ganaie, I. M. and Bhat, K. H., 2014. Limnological study of Dal lake Srinagar, J&K. *International Journal of Engineering Research and General Science* **2**(6): 558-573.

- Kundangar, M. R. D. and Abubakr, A. 2001. Post dredging changes and comparative limnology of Dal Lake Kashmir. *Poll.Res.*,**20**(4):534-547.
- Kundangar, M. R. D. and Abubakr, A. 2004. Thirty years of ecological research on Dal Lake Kashmir. *J. Res. Dev.*, **4**:45-57.
- Kundangar, M. R. D. and Abubakr, A. 2006. Comparative Limnology of Himalayan Dal Lake, Kashmir. *Trends of Biodiversity and Aquaculture. Daya Publishing House, Delhi.* pp. 174-203
- Kuypers, M. M., Marchant, H. K. and Kartal, B. 2018. The microbial nitrogen-cycling network. *Nature Reviews Microbiology* **16**(5): 263-276.
- Lorenzen, M. W. 1980. Use of chlorophyll-Secchi disk relationships. *Limnol. Oceanogr.* **25**(2).
- Lori, S. M, Lone, S. A. and Awasthi, A. H. 2014. Limnological studies of a famous Himalayan lake: The Dal Lake. *International Journal of Current Research***6**(1): 4357-4361.
- Malhotra, S. K. and Zanoni, A. E., 1970. Chloride interference in nitrate nitrogen determination. *Journal-American Water Works Association***62**(9): 568-571.
- Malik, M. M. 2015. Rotifera (an important fish food) population in relation to trophic status of different basins of Dal Lake, Kashmir. *FOFY, SKUAST-K: J&K, Kashmir.*
- Malik, M., Balkhi, M. H., Abubakr, A. and Bhat, F. A. 2017. Assessment of trophic state of Nagin lake based on limnological and bacteriological studies. *Nature Environment and Pollution Technology.*, **16** (2) : 485-49.
- Mathew, K. and Vasudavan, N. T. 2000. Water quality of river Pamba at Kozhencherry. *Poll. Res.*,**19**(4):665-668.
- Maulood, B. K. and Saadalla, H. A. A. 1992. A study on water quality of Saklawia irrigation drainage canal within Baghdad district, Iraq. *J. Coll. Educ. For Women.*,**3**:83- 87.
- Murthuzasab, M. R., Rajashekhar, M., Vijaykumar, K. and Haliked, N. S. 2010. Seasonal variation in physico-chemical parameters of Hirahalla Reservoir, Koppal District Karnataka. *International Journal of Systems Biology***2**(2): 16.
- Mushatq, B., Raina, R., Yaseen, T., Wanganeo, A. and Yousuf, A. R. 2013. Variations in the physico-chemical properties of Dal Lake, Srinagar, Kashmir. *African Journal of Environmental Science and Technology***7**(7): 624-633.
- Neves, I. F., Roche, K. F. and Pinto, A. A. 2003. Zooplankton community structure of two marginal lakes of the river Cuiaba with analysis of Rotifera and Cladocera diversity. *Braz. J. Biol.*,**63**(2):329 - 343.
- Otsuki, A. and Wetzel, R. G. 1972. Co-precipitation of phosphate with carbonates in a marl lake.

Limnol. Oceanogr. **17**(5): 763-767.

Prasannakumari, A. A., Arathy, M. S. and Gangadevi, T. 2000. Bio-geo-chemical studies of a temple pond with special reference to Macroflora. *Pollution Research*, **19** (4):623–631.

Qadri, M. Y., Naqash, S. A., Shah, G. M. and Yousuf, A. R., 1981. Limnology of two trout streams of Kashmir. *Journal of the Indian Institute of Science***63**(8): 137.

Rapin, F., Blanc, P. and Corvi, C. 1989. Eutrophication trends in the water quality of the Rhone River. *J. Mar. Biol. Assoc.*,**54**:825-855

Ruhela, M., Wani, A. A. and Ahamad, F. 2020. Efficiency of Sequential Batch Reactor (SBR) based sewage treatment plant and its discharge impact on Dal Lake, Jammu & Kashmir, India. *Archives of Agriculture and Environmental Science***5**(4): 517-524.

Sarwar, S. G. and Majid, I. 1997. Abiotic features and diatom population of Wular lake, Kashmir. *Ecology Environment and Conservation*, **3** (3):121–127.

Sawyer, C. N., McCarty, P. L. and Perry. 1967. Chemistry for Sanitary Engineers. 2nd Ed., McGraw Hill, New York, pp. 518.

Sharma, J. N., Kanakiya, R. S. and Singh, S. K. 2015b. Limnological study of water quality parameters of Dal Lake, India. *IJRSET*,**4**(2):380-386.

Sharma, S., Kumar, V., Yadav, K. K., Gupta, N. and Verma, C. 2015a. Long-term assessment of fly ash disposal on physico-chemical properties of soil. *Int. J. Curr. Res. Biosci. Plant Biol.*, **2**(8):105-110

Singh, L. and Choudhary, S. K. 2013. Physico-chemical characteristics of river water of Ganga in middle Ganga plains. *International Journal of Innovative Research in Science, Engineering and Technology* **2**(9): 4349-4357.

Singh, R. and Mahajan, I. 1987. Phytoplankton and water chemistry of Rewalsar and Renuka Lakes, Himachal Pradesh. *Indian Journal of Ecology*, **14**(2): 273-277.

Singh, S. P., Pathak, D. and Singh, R. 2002. Hydrobiology of two water bodies ie Jagatdev and Narayan ponds of Satna (MP). *Ecol Environ Conserv.* **8**: 289-292.

Solim, S. and Wanganeo, A. 2008. Excessive phosphorus loading to Dal Lake, India: Implications for managing shallow eutrophic lakes in urbanized watersheds. *International Review of Hydrobiology***93**(2): 148-166.

Sylvester, R. O. 1961. Nutrient content of drainage water from forested urban and agricultural areas. *Tech. Rep. Taft. Saint. Engng. Centre.* **61**(3): 80 – 88.

- Tepe, Y., Turkmen, A., Mutlu, E. and Ate, A. 2005. Some physicochemical characteristics of Yarseli lake, Hatay, Turkey. *Turkish Journal of Fisheries and Aquatic Sciences* **5**: 35-42.
- Trisal C. L. 1985. Trophic status of Kashmir Valley lakes. *Geobios Spl. In: Mishra SD, Sen DN, Ahmed I (eds) Proc Nat Sympos Evalua Environ, Jodhpur, India,-I. 17179.*
- Vass, K. K., Raina, H. S., Zutshi, D. P., & Khan, M. A. 1977. Hydrobiological studies on river Jhelum. *Geobios* **4**(6): 238-248.
- Venkatasubramani, R. and Meenambal, T. 2007. Study on subsurface water quality in Mettupalayam taluk of Coimbatore district, Tamil Nadu. *Nature, Environment and Pollution Technology* **6**(2): 307-310.
- Wang, W. C. and Evans, R. L. 1970. Dynamics of nutrient concentrations in the Illinois River. *Journal (Water Pollution Control Federation)* pp. 2117-2123.
- Welch, P. S. 1952. *Limnology*, McGraw Hill Book Co., Inc., New York, 538 pp.
- Wetzel, R. G. 1975. *Limnology* WB Saunders Company. Philadelphia, Pennsylvania. pp. 743.
- Wetzel, R. G. and Likens, G. E. 2000. Dissolved oxygen. In *Limnological Analyses*. Springer, New York, NY. pp. 73-84
- Williams, E. M. and Eddy, F. B. 1986. Chloride uptake in freshwater teleosts and its relationship to nitrite uptake and toxicity. *Journal of Comparative Physiology B* **156**(6): 867-872.
- Yousuf, A. R. 1979. Studies on the limnology and fisheries of Lake Manasbal Kashmir. *Ph. D. Thesis*. University of Kashmir.
- Yousuf, A. R. and Shah, G. M. 1988. Comparative limnology of some freshwater habitats of Kashmir. *Geobios*, **7**:58-61.
- Yousuf, A. R., Balkhi, M. H. and Qadri, M. Y. 1986. Limnological features of a forest lake of Kashmir. *J. Zool. Soc. India*. **38**(1/2): 29 – 42.
- Yousuf, A. R., Bhat, F. A. and Mahdi, M. D. 2006. Limnological features of River Jhelum and its important tributaries in Kashmir Himalaya with a note on fish fauna. *Journal of Himalayan Ecology and Sustainable Development* **1**: 37-50.
- Zuber, S. M. 2007. Ecology and economic valuation of Lake Mansar, Jammu. Ph. D. Thesis, Department of Zoology, University of Jammu, Jammu
- Zutshi, D. P, Subla, B. A., Khan, M. A., Wanganeo, A. 1980. Comparative limnology of nine lakes of Jammu and Kashmir Himalayas. *Hydrobiology* **72**: 101-112.

Zutshi, D. P. and Vass, K. K. 1973. Variation in water quality of some Kashmir lakes. *Trop. Ecol.* **14**: 182-196

Zutshi, D. P., Kaul, V. and Vass, K. K. 1972; Limnological studies of high altitude Kashmir lakes. *Verh Inter Verin Limnol.* **118**: 599-604.

Zutshi, D. P., Subla, B. A., Khan, M. A. and Wanganeo, A. 1980. Comparative limnology of nine lakes of Jammu and Kashmir Himalayas. *Hydrobiologia* **72**(1): 101-112.

Formatted: German (Germany)

UNDER PEER REVIEW