

## Original Research Article

# Consequences of Applying Different Poultry Manure Rates on the Fertility Level of an Oxisol and the Agromomic Performance of Okra (*Abelmoschus esculentus*) in Dschang (Cameroon Western Highlands).

### ABSTRACT

**Problem statement:** Low yields of crops in Sub-saharan Africa are often associated with low soil fertility. However, due to high cost and negative environmental impact of chemical fertilizers, using cheap and readily available organic manures such as poultry manure (PM) has become indispensable.

**Aim:** To evaluate the effect of different rates of poultry manure (PM) on soil fertility and the performance of Okra (*Abelmoschus esculentus*) in the Cameroon Western Highlands.

**Methodology:** The study was carried out in the field and in the laboratory. The experimental plot (191.25 m<sup>2</sup>) in the field was designed in a randomized complete block design with six treatments and three replications: 0 t ha<sup>-1</sup> of PM (T<sub>0</sub>), 3 t ha<sup>-1</sup> of PM (T<sub>1</sub>), 6 t ha<sup>-1</sup> of PM (T<sub>2</sub>), 9 t ha<sup>-1</sup> of PM (T<sub>3</sub>), 12 t ha<sup>-1</sup> of PM (T<sub>4</sub>), and 250 kg of NPK 12-14-19 (T<sub>5</sub>). Soil samples were analyzed in the laboratory by standard procedures before and after treatment.

**Results:** Treatment T<sub>0</sub> had a clay loam texture, acidic pH (5.4), relatively high organic carbon content (1.92%), moderate total nitrogen (0.33%) and moderate available phosphorus (36.07 mg kg<sup>-1</sup>). The exchangeable complex revealed high K<sup>+</sup> (1.02 cmol kg<sup>-1</sup>), low Ca<sup>2+</sup> (2.60 cmol kg<sup>-1</sup>) and Mg<sup>2+</sup> (1.04 cmol kg<sup>-1</sup>), average Na<sup>+</sup> (0.33 cmol kg<sup>-1</sup>). After treatment, soil pH<sub>H<sub>2</sub>O</sub>, available phosphorus and exchangeable K, Ca, and Mg increased after harvest whereas Na decreased for all the treatments. The effect of the treatments on growth parameters was such that T<sub>3</sub>>T<sub>4</sub>>T<sub>1</sub>>T<sub>5</sub>>T<sub>2</sub>>T<sub>0</sub>. The global trend of yield parameters was such that T<sub>3</sub>>T<sub>4</sub>>T<sub>5</sub>>T<sub>1</sub>>T<sub>0</sub>>T<sub>2</sub>. Economically, treatments T<sub>3</sub>, T<sub>4</sub>, and T<sub>5</sub> were profitable and recommendable for popularization, with a BCR>2. The most economically viable treatment was T<sub>3</sub> with a profit rate (PR) of 601.66% and a BCR value of 7.02, while T<sub>2</sub> was the least economically viable treatment with a negative PR of -32.14% and a BCR of -33.67.

**Conclusion:** Farmers in Western highlands can produce okra profitably and sustainably using poultry manure at a rate of 9 t ha<sup>-1</sup>.

**Keywords:** Poultry Manure, Soil fertility, Economics of production, Okra, Western Highlands.

### 1. INTRODUCTION

Okra (*Abelmoschus esculentus*) is a globally cultivated vegetable crop valued for its tender pods and nutritional benefits. The production statistics of okra reflect its significance in both local and international markets. According to the Food and Agriculture Organization of the United Nations [1]. The world's total production of okra reached 7.8 million metric tons in 2020 [2]. Among the highest producing countries, India stands out as the largest contributor to global okra production, with an estimated production of over 6.7 million metric tons annually [2]. Nigeria follows closely, with an annual production of around 1.9 million metric tons [2]. Other significant producers include Mali, Sudan, Pakistan, and Ivory Coast, contributing to the global supply of okra. In Cameroon, okra holds a prominent position among vegetable crops, although its production figures are relatively modest compared to major producing countries.

Commented [A1]: You didnt conduct any lab experiment, so remove it

According to the Ministry of Agriculture and Rural Development of Cameroon (2020), the annual production of okra in the country is approximately 120,000 metric tons. However, this pales in comparison to the production figures of other vegetables such as tomatoes, peppers, and eggplants, which are among the highest producing vegetables in Cameroon, with annual production exceeding one million metric tons each [3]. The average yield of okra in Cameroon is approximately 8 metric t ha<sup>-1</sup> [3]. In contrast, India boasts significantly higher yields, with an average of around 11 metric t ha<sup>-1</sup> [2]. Similarly, Nigeria achieves higher yields than Cameroon, with an average of approximately 10 metric tons per hectare [2]. Although okra is very popular in Cameroon, the yields remain low due to biotic and abiotic factors [1]. The low yields have been ascribed to low soil fertility and deficiency in important mineral nutrients [4, 5]. The farmers in the western highlands rely heavily on the use of chemical fertilizers to grow crops on the same piece of land many times a year to improve their yields [6]. This continuous use of chemical fertilizers has however resulted to negative nutrient imbalances, soil degradation, environmental pollution, and increased cost of production [6, 7]. Poor soil fertility is an important concern, directly linked to food insecurity due to unsustainable intensified land use [8, 9]. Faced with these challenges, studies have revealed PM to be a cheap, locally available, and abundant sustainable alternative to chemical fertilizers [10, 11]. Many studies have explored the potentials of PM for different crop cultivation, but data scarcity on the application rates on different crops remains a major constraint in Cameroon. This knowledge gap underscores the need for further research to understand the potential benefits and limitations of PM in enhancing soil fertility and crop performance. The main objective of the present work is to assess the impact of different rates of PM on soil fertility and the agronomic performance of okra. Hypotheses include: H<sub>0</sub> (PM has no effect on soil fertility, and on the growth, yield, and economics of okra) and H<sub>a</sub>: (there is at least one rate of application of PM that has a significant effect on soil fertility, and on the growth, yield, and economics of okra). The main results obtained will be useful to local farmers and agricultural engineers for sustainable production of Okra.

**Commented [A2]:** Can you explain specification about use of PM. Because you just gave general statement that PM has been used since years, but reason for its use?

## 2. MATERIAL AND METHODS

### 2.1 Study site

The field experiment was conducted in the Teaching and Research Farm of the Faculty of Agronomy and Agricultural Sciences (FASA) of the University of Dschang (Cameroon). The study site is situated in Menoua division in the West Region of Cameroon, at latitude 5°26'36.348" N and longitude 10°47'7.46" E (Figure 1). This area falls within Agro-ecological zone III of Cameroon, specifically the Western highlands. Dschang has a mean average altitude of 1400 m above sea level [12]. The climate of Dschang is the humid tropical monsoon type, with two seasons: a dry season of 4 months (from mid-November to mid-March) and a long rainy season of 8 months (mid-March to mid-November). The average annual rainfall ranges between 1800 to 2000 mm. The annual temperature of Dschang ranges from 13.02°C and 26.73°C with an average of 19.87°C and an average thermic amplitude of 13.71°C. The relative humidity of air is about 60% [12]. The study area comprises the Menoua river watershed that is drained by a fifth order stream (Ménoua), through the contribution of many streams that take their rise from the high elevation Santchou Hills. This watercourse is the flow of the watershed, of which the Dschang municipal lake is the outlet, an attractive site to tourist, and is watered by several small streams and rivers such as the Lefock. The vegetation is mostly comprised of woody savannah shrubs, grassland, with some trees. The research area featured a short fallow period of approximately five to six months, primarily characterized by the prevalence of grasses. The soils are hydromorphic soils in marshy lowlands and red ferrallitic soils in the mid-slopes [13]. The studied area is located along the Cameroon volcanic line (CVL), precisely, on the southern slope of mount Bamboutos in the west Cameroon

Highlands. It is characterized by various volcanic products covering the basement granitoids. The basement rocks in the Dschang region consist of NeoProterozoic granite-gneiss, late

Commented [A3]: Please be concise and to the point. You have written a lot unnecessary things.

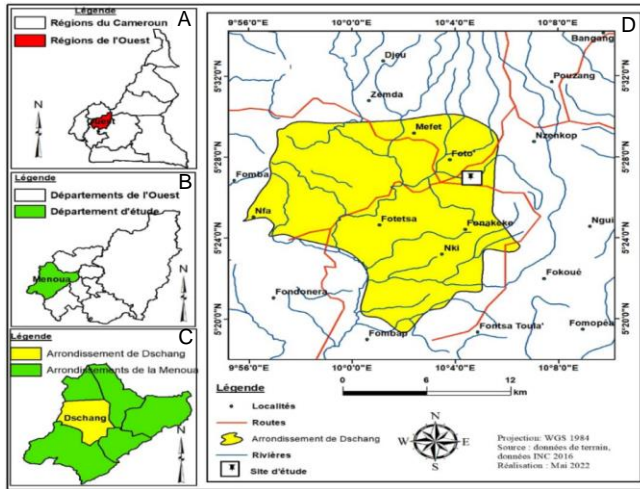


Figure 1. Map of Dschang showing the study area. (A): Map of Cameroon showing the West Region. (B): Map of the West Region showing the Menoua division. (C): Map of Menoua Division showing the Dschang subdivision. (D): Map of Dschang Subdivision showing the study site.

Proterozoic granitoids intruded within the granite gneisses and gabbroic dykes that crop out two previous units. The composition of rocks here is basalt, trachyte, phonolites, and granite. The main activity of the inhabitants of the Western highlands of Cameroon is generally agriculture and Dschang in particular. Intensive agriculture is the predominant practice with scarce fallow lands. In this region most farmers practice mixed cropping where crops like Arabica coffee, plantains, banana, beans, maize, cassava, etc. are being grown on the same piece of land.

Commented [A4]: Give that part in introduction portion

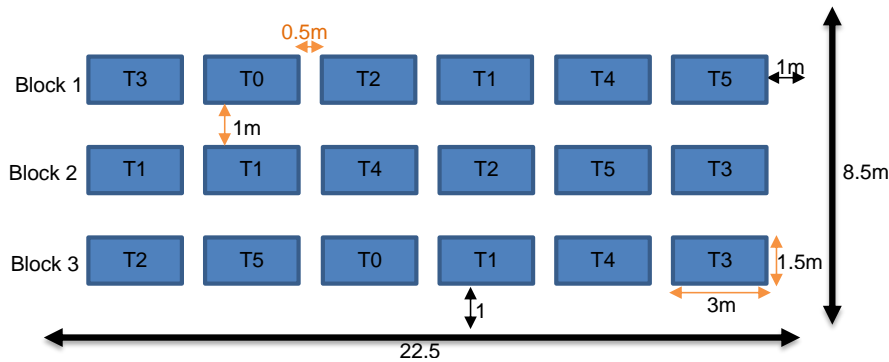
Commented [A5R4]:

Commented [A6]:

## 2.2 Methodology

### 2.2.1 Experimental Design

The experimental layout used was RCBD, made of 18 experimental units (EU) divided into 3 blocks of 6 treatments each. Each EU measured 1.5 m by 3 m (4.5 m<sup>2</sup>). The blocks were separated by a 1m spacing, while the treatments were 50 cm apart within the same block. The total surface area of the experimental plot was 191.25 m<sup>2</sup> (Figure 2).



**Figure 2. Experimental Layout (T0 – control; T1 – 3 tons ha<sup>-1</sup> of poultry manure; T2 – 6 tons ha<sup>-1</sup> of poultry manure; T3 – 9 tons ha<sup>-1</sup> of poultry manure; T4 – 12 tons ha<sup>-1</sup> of poultry manure; T5 – 250 Kg ha<sup>-1</sup> of NPK 12-14-19).**

### **2.2.2 Land preparation**

Land preparation was carried out between the 8<sup>th</sup> and the 15<sup>th</sup> of January 2024. This involved clearing, de-stumping, ploughing, pegging, formation of experimental units, application of treatments and fencing. After the formation of the EUs, the different treatments were randomly attributed to the EUs within each block. The randomisation was done using Excel. The different rates of PM were applied by broadcast and incorporated at a depth of 30 cm per experimental unit. The quantity of PM to be applied was calculated for each rate by simple proportion according to the recommended quantity per hectare and the surface area of the experimental unit. T1 was applied at a rate of 3.9 t ha<sup>-1</sup>. T2 was applied at a rate of 6 t ha<sup>-1</sup>. T3 was applied at a rate of 9 t ha<sup>-1</sup>. And the T4 treatment was applied at a rate of 13 t ha<sup>-1</sup>. The NPK 12-14-19 treatment was applied at 2 weeks after germination by ring application. The fertilizer was applied at a rate of 250 Kg ha<sup>-1</sup>.

**Commented [A7]:** From where did you collected PM?

### **2.2.3 Planting**

Seven packets of *Rafiki* (70 g each), a certified F1 hybrid okra seeds, obtained from SEMAGRI shop in Bafoussam was used for the study. Each experimental unit was made up of 4 seeding rows and 7 seeding lines, with a planting distance of 50 cm x 50 cm [14]. Thus, each EU had a total 28 plants. On each planting spot, 3 seeds were sown at a depth of 5 cm to facilitate germination. The seeds were sown on the 25<sup>th</sup> of January 2024. This corresponded to a seeding density of 84 seeds per EU and 1512 seeds for all the 18 EUs. The first seeds germinated 4 days after sowing and the germination rate was calculated for each treatment in the 3 blocks. Replacement planting was done 3 days after germination for seeds that did not germinate.

$$\text{Germination Rate (GR)} = \frac{\text{Total number of seeds germinated}}{\text{Total number of seeds sown}} \times 100.$$

Replanting was carried out to replace seeds that didn't germinate or that germinated and died. The plants were thinned down to 1 plant per stand 2 weeks after germination.

Farm management involved watering, thinning, weeding, pest, and disease control, harvesting.

Irrigation started immediately after sowing and continued daily until the onset of March rains. Pest and disease control involved plants treatment of with Kobichamps 72% WP (80 g kg<sup>-1</sup> mefenoxam and 640 g kg<sup>-1</sup> Mancozeb), Jumper D WP (Dimethomorph 80 g kg<sup>-1</sup>+ Chlorothalonil 400 g kg<sup>-1</sup>), and Kern 60% WSG (Metiram 55% + Pyraclostrobin 5%), for fungal diseases control. For pest control, Pyristar 600 EC (600 g L<sup>-1</sup> Chlorpyrifos-ethyl) and Abamet 18 EC (18 g L<sup>-1</sup> Abamectin) were used.

Weeding was carried out weekly by manually removing the weeds and clearing a 1 m border around the experimental plot to limit competition for resources, eliminate alternative pest or disease hosts and to ensure the plants received adequate sunlight. Pest and disease management was carried out all through the growing period. Both manual and chemical

controls were used. Insects and snails were the major pests, and fungal and viral diseases. Phytosanitary treatments were carried out weekly using a 16L knapsack sprayer.

#### **2.2.4 Data collection**

Plant data collection began with the collection of the number of germinated plants one week after planting. Growth and yield data was collected from the 4 middle plants. Collection of growth data began three weeks after sowing or one week after the application of the fertilizer control treatment. Yield data was collected from the 11<sup>th</sup> to the 13<sup>th</sup> week on the same plants. Yield data include number of fruits, Length of fruits (mm) and weight of fruits (g). The first fruits were harvested 77 days after planting and harvesting continued every 3 days. The fruits were considered ready when they were tender, and their peduncles easily broken.

#### **2.2.5. Soil sample collection**

A soil sample was collected during land preparation and conserved. At the end of the harvest, soil samples were collected from several sites in T2 and T4 respectively, and bulk into a composite sample for each of the poultry manure treatment EUs and sent for analysis to evaluate the effect of the treatments on the soil properties. This was done using an auger at surface layer (30 cm). The collected soil samples were air dried at room temperature and ground to pass a 2 mm sieve.

#### **2.2.6 Laboratory analysis of soils**

The soil physio-chemical properties were analysed at the "Laboratoire d'Analyse des Sols et de Chimie d'Environnement" (LABASCE) of the Faculty of Agronomy and Agricultural Sciences (FASA) of the University of Dschang (Cameroon), following the procedures reported by [15]. Soils were analyzed before and after treatment. The particle size distribution was determined by the Robison's pipette method [16]. The pH-H<sub>2</sub>O was determined in a soil/water ratio of 1:2.5 and the pHKCl was determined in a soil/KCl composition of 1:2.5 using a digital pH meter. The organic carbon was measured by Walkley-Black method [17]. Total nitrogen (TN) was measured by the CDAB Kjeldahl method [18]. Available phosphorus was determined by concentrated nitric acid reduction method [17]. Exchangeable cations were analysed by ammonium acetate extraction at pH7 [19]. The cation exchange capacity (CEC) was measured by sodium saturation method. The base saturation was calculated as the percentage of the sum of exchangeable cations (S) divided by the CEC.

#### **2.2.7. Statistical analysis**

Statistical analysis was conducted by one-way Analysis of Variance (ANOVA) to examine the impact of different treatments on the studied parameters. Significant differences were further analyzed using Tukey's test. The Pearson's correlation coefficient was used to establish relationships between the growth and yield parameters. A significance level of 5% was set, and data analysis was performed using R software version 4.2.1.

#### **2.2.8. Economic analysis**

Economic analysis was carried out to assess the profitability and recommendation suitability of each treatment. An evaluation of the economic viability of various soil treatments for cucumber cultivation was conducted, considering mean yield, costs, and unit price per kilogram for each treatment. Calculations included determining the marginal net return (MNR), Benefit-to-Cost Ratio (BCR), and profit rate (PR) or marginal rate of return (MRR) for the different soil treatments.

$$PR\% = (BCR - 1) \times 100$$

The gross return (GR) of a fertilizer treatment was obtained by multiplying the average yield (kg ha<sup>-1</sup>) per treatment by the unit price of cucumber.

GR=Average yield \* unit price of 1 kg of cucumber.

The operation cost (OC) is comprised of the sum of the fertilizer cost (FC), transport cost (TC), fertilizer spreading cost (FSC), marginal net return (MNR) and the investment interest (II) during the planting period.

The marginal net revenue (MNR) is the product of the unit price of 1 kg of Okra and extra yield.

MNR = (EY \* unit price of 1 kg of Okra).

The extra-yield (EY) is obtained as the difference between yield with fertilizer use (Tn) and the yield without fertilizer use (To).

EY = (Tn – To).

The benefit -to-cost-ratio (BCR) is calculated by dividing MNR by OC:

BCR = MNR/OC

For BCR>1, profit is expected, but if BCR<1, no profit is expected. Nevertheless, for a BCR≥2, at least 100% profit rate of the total investment is expected, and the fertilizer (treatment) is suitable for wider popularization.

### 3. RESULTS AND DISCUSSION

#### 3.1 Soil characteristics as affected by treatments

The topmost horizon of the profile was dark brown (5YR3/3) and made of fresh plant debris and decomposing organic matter. The middle horizon was reddish brown (5YR5/3) and had traces of plant roots. The mid bottom horizon was a reddish brown (5YR7/6) and had unaltered rock fragments. The application of poultry manure significantly improved the fertility parameters of the soil compared to the control (T0).

The pH<sub>H2O</sub> increased from 5.4 in the control to 6.0 in the highest poultry manure application rate (T4), indicating the liming effect of the poultry manure [20]. This is consistent with the findings of [21], making available soil nutrients for crop absorption.

Commented [A8]: Either give for all., or remove others too

**Table 1. Physicochemical properties of PM and the soil before and after treatment.**

Soil parameter	PM	T0	T2	T4
Sand	/	34	/	/
Silt	/	30	/	/
Clay	/	36	/	/
Textural class	/	Clay loam	/	/
pH <sub>H2O</sub>	8.9	5.4	5.9	6.0
pH KCl	8.4	4.3	4.9	4.9
ΔpH	0.5	1.1	1.0	1.1
OC (%)	25.52	1.92	3.13	3.48
Total nitrogen (%)	17.75	0.33	0.34	0.50
C/N ratio	14	5.82	9.21	6.96
Available phosphorus (mgKg <sup>-1</sup> )	8260.80	36.07	43.38	49.32

Calcium (cmol kg <sup>-1</sup> )	62.72	2.6	5.09	5.23
Magnesium (cmol kg <sup>-1</sup> )	8.4	1.04	0.98	1.23
Potassium (cmol kg <sup>-1</sup> )	56.24	0.66	1.35	1.39
Sodium (cmol kg <sup>-1</sup> )	1.26	0.33	0.01	0.01
SEB (cmol kg <sup>-1</sup> )	128.62	4.63	7.43	7.86
CEC (cmol kg <sup>-1</sup> )	/	17	18.35	18.75
CEC OC (cmol kg <sup>-1</sup> )	/	3.84	6.26	6.96
CEC clay (cmol kg <sup>-1</sup> )	/	13.16	12.09	11.79
Base saturation (%) S/T	/	54	40.76	41.94
Electrical conductivity (ms/cm)	0.07	0.03	0.13	0.15

CEC organic carbon = 2 x organic carbon %; CEC clay = Soil CEC-CEC Organic carbon. PM: poultry manure. T0: control. T2: 6 t ha<sup>-1</sup> poultry manure. T4: 12 t ha<sup>-1</sup> poultry manure. CEC: Cation exchange capacity. OC: organic carbon. PM: poultry manure.

The organic carbon content increased from 1.96 in T0 to 3.13 in T2 and 3.48 in T4, in line with the findings of [22] which reported that increased in organic carbon contents increase soil moisture retention capacity of the soil.

The C/N ratio increased slightly but remained low (<10) and very good after treatment, consistent with the findings of [23] which showed that a poultry manure application increased the C/N ratio of the soil. The C/N ratio <10 increased soil microbial activity and nutrient availability according to [24].

Available phosphorus also increased from 36.07 mg kg<sup>-1</sup> in the control to 49.32 mg kg<sup>-1</sup> in T4, consistent with the results reported by [9, 22] who found that PM contains significant amounts of phosphorus, which is mineralized and converted to plant-available forms under suitable pH range close to 7.

**Table 2. Exchangeable bases ratio of the different treatments**

Treatment	C/N	S/T (%)	Ca/Mg	Mg/K	(Ca+Mg)/K	Ca/Mg/K	ESP	CRC
T0	5.82	27.24	2.5	1.58	5.52	56/22/14	0.07	0.7/1.2/2.3*
T2	9.21	40.76	5.19	0.73	4.50	69/13/18	0.05	0.9/0.7/3.0*
T4	6.96	41.94	4.25	0.88	4.65	67/16/18	0.05	0.9/0.9/2.9*

S/T: base saturation. ESP: exchangeable sodium percentage. CRC: coefficient of relative concentration. \* Most concentrated element that determines the direction of equilibrium.

The sum of exchangeable bases (SEB) increased from 4.63 cmol kg<sup>-1</sup> in the control to 7.86 cmol kg<sup>-1</sup> in T4, with K, Ca, and Mg increasing from 0.66 cmol kg<sup>-1</sup>, 2.6 cmol kg<sup>-1</sup>, and 1.04 cmol kg<sup>-1</sup> to 1.39 cmol kg<sup>-1</sup>, 5.23 cmol kg<sup>-1</sup>, and 1.23 cmol kg<sup>-1</sup> respectively. The Ca/Mg/K ratio improved with increased rates of poultry manure (Table 2). This might be due to the fact that PM raised soil pH; thus making plant nutrients available [9, 24].

### 3.2 Effect of treatment on germination rate and growth parameters of Okra

The germination rate showed no significant difference ( $P=0.7$ ) among the treatments (Figure 3), which aligns with the findings of [25]. This could be because the nutrient requirements for initial seed germination were already met in the control (T0) treatment, and the additional nutrients from the poultry manure did not provide a significant advantage.

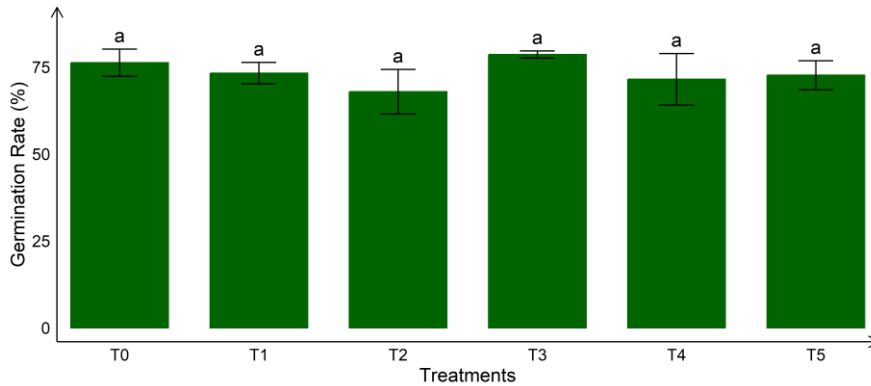


Figure 3. Germination Rates per Treatment

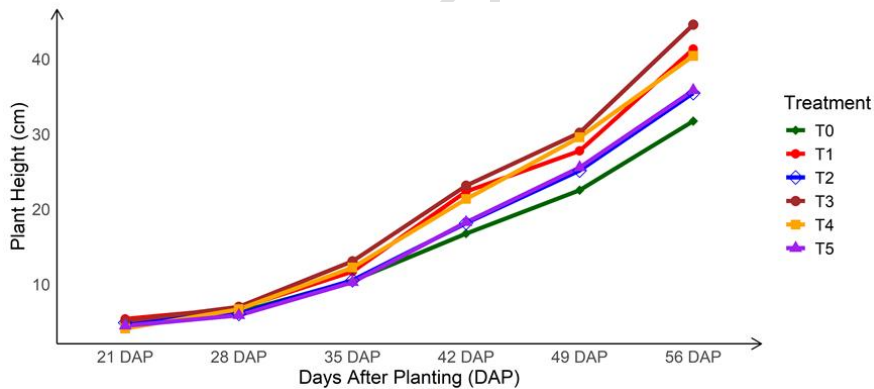
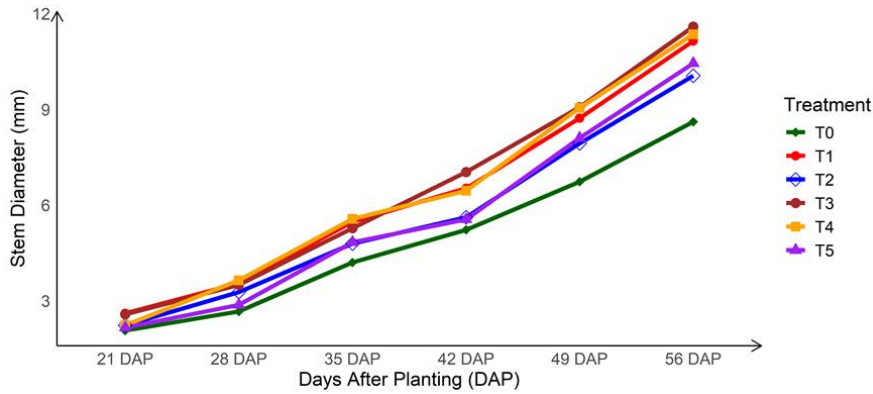


Figure 4. Evolution of plant height per treatment with time

While there was no significant effect ( $P=0.19$ ) of poultry manure rates on plant height, treatment T3 and T4 had taller plants compared to the other treatments (Figure 4). This could be due to the poultry manure's ability to improve nutrient availability, as already documented by [4].

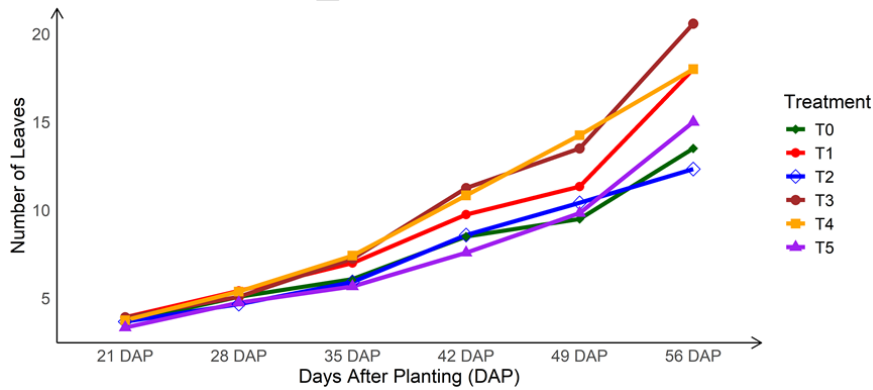


**Figure 5. Evolution of stem diameter per treatment with time**

PM significantly influenced ( $P=0.03$ ) the stem diameter of okra plants (

*Figure 5*). The treatment with the highest rate of poultry manure (T3: 9 t/ha) had the highest mean stem diameter (6.51 mm). This finding is consistent with the study by [26], who reported that poultry manure increased the stem diameter of tomato plants due to the improved soil nutrient status.

PM had a significant effect ( $P=0.0012$ ) on the number of leaves of okra plants (*Figure 6*). Treatment T3 had the highest mean number of leaves. This observation is supported by the findings of [22], who observed that the application of poultry manure significantly increased the number of leaves due to the increased availability of nutrients.



**Figure 6. Evolution of Number of leaves per treatment with time**

**Table 3. Variation of mean leaf length, leaf width, and leaf area with different of PM application rates**

Treatment	Leaf length (cm)	Leaf width (cm)	Leaf area (cm <sup>2</sup> )
T0	8.74±2.24 <sup>a</sup>	11.01±3.03 <sup>a</sup>	78.08±38.75 <sup>b</sup>
T1	10.57±2.09 <sup>a</sup>	13.78±3.35 <sup>a</sup>	118.98±48.09 <sup>ab</sup>
T2	9.37±2.88 <sup>a</sup>	12.05±3.86 <sup>a</sup>	93.16±50.15 <sup>ab</sup>
T3	11.26±2.65 <sup>a</sup>	14.63±3.58 <sup>a</sup>	136.67±58.78 <sup>a</sup>
T4	10.64±2.64 <sup>a</sup>	13.93±3.76 <sup>a</sup>	124.25±55.98 <sup>ab</sup>
T5	9.52±2.08 <sup>a</sup>	12.46±2.95 <sup>a</sup>	99.55±41.01 <sup>ab</sup>

PM had no significant effect on leaf length and leaf width ( $P=0.065$  &  $P=0.075$  respectively), but it had a significant effect ( $P=0.03$ ) on the leaf surface area of okra plants (Table 3). Treatment T3 had the highest mean leaf surface area (136.67 cm<sup>2</sup>). This finding is consistent with the study by [27], who reported that poultry manure application increased the leaf area of tomato plants due to the improved soil physical properties and nutrient availability. The observed trend of poultry manure on the growth of okra was T3>T4>T1>T5>T2>T0.

### 3.3 Effect of treatment on yield parameters of Okra

There was a highly significant effect ( $P<0.001$ ) of the treatments on the number of okra fruits. Treatment T3 (9 T ha<sup>-1</sup>) resulted in the highest mean number of fruits (3.41), which was significantly different from the other treatments (**Error! Not a valid bookmark self-reference.**). This result aligns with the findings of [28], who reported that poultry manure increases number of fruits by enhancing soil fertility and providing essential nutrients required for fruit development. Conversely, T0 (control) and T1 (3 T ha<sup>-1</sup>) had the lowest mean number of fruits (1.61 and 1.96, respectively), indicating that lower amounts or absence of poultry manure did not provide sufficient nutrients to maximize fruit production. Similarly, [24] found that insufficient manure application leads to sub-optimal nutrient availability, resulting in lower fruit yields.

PM had no statistically significant effect ( $P=0.26$ ) on fruit length (**Error! Not a valid bookmark self-reference.**); mean fruit length varied only slightly, with T3 having the longest mean fruit length (57.38 mm), while T2 had the shortest length (51.06 mm). This suggests that while PM affects the number of fruits, it may not significantly influence fruit length. According to [29], while PM enhances nutrient availability in soils, its effect on fruit length may not be significant based on the genetic potential of the plants or other environmental factors.

PM had a statistically significant effect ( $P=0.02$ ) on fruit diameter (**Error! Not a valid bookmark self-reference.**). T5 (NPK) had the widest fruit diameter (31.04 mm), with T3 closely behind (30.15 mm), and T2 the narrowest diameter (26.32 mm). This corroborated the findings of [30], who reported that poultry manure and NPK fertilizer both enhanced soil fertility and provide essential nutrients required for fruit development.

There was a statistically significant effect ( $P<0.001$ ) of PM on fruit weight (**Error! Not a valid bookmark self-reference.**). The yield of okra (t ha<sup>-1</sup>) was highest in T3 (10.10 T ha<sup>-1</sup>) and lowest in T0 (4.17 T ha<sup>-1</sup>). The increase in yield with higher rates of poultry manure application can be attributed to improved soil fertility. Also, [30] documented that PM improves soil pH and macronutrient availability, which positively affects crop performance. Moreover, the gradual release of nutrients from PM, and resulting better soil physical conditions supports sustained plant growth and higher yields [24]. The observed trend of poultry manure on the yield of okra was T3>T4>T5>T1>T2>T0.

**Table 4. Variation of yield parameters per treatment**

a	T0	T1	T2	T3	T4	T5
Number of Fruits						
1	1.17±0.28 <sup>b</sup>	1.60±0.33 <sup>b</sup>	1.40±0.33 <sup>b</sup>	3.00±1.04 <sup>a</sup>	2.60±1.33 <sup>a</sup>	1.25±0.26 <sup>b</sup>
2	1.00±0.00 <sup>b</sup>	1.27±0.45 <sup>b</sup>	1.40±0.47 <sup>b</sup>	2.82±1.11 <sup>a</sup>	2.64±1.07 <sup>a</sup>	1.38±0.41 <sup>b</sup>
3	2.67±1.60 <sup>a</sup>	3.00±1.35 <sup>a</sup>	3.50±1.73 <sup>a</sup>	4.42±2.07 <sup>a</sup>	4.33±2.06 <sup>a</sup>	3.40±1.61 <sup>a</sup>
Mean	1.61±0.62 <sup>b</sup>	1.96±0.71 <sup>b</sup>	2.10±0.84 <sup>b</sup>	3.41±1.41 <sup>a</sup>	3.19±1.15 <sup>a</sup>	2.01±0.76 <sup>b</sup>
Fruit Length (mm)						
1	68.68±10.31 <sup>a</sup>	59.91±1.60 <sup>a</sup>	49.09±4.96 <sup>a</sup>	66.93±7.77 <sup>a</sup>	68.27±6.11 <sup>a</sup>	64.39±12.34 <sup>a</sup>
2	51.74±16.44 <sup>a</sup>	49.97±13.18 <sup>a</sup>	50.74±10.15 <sup>a</sup>	51.93±10.86 <sup>a</sup>	43.86±5.63 <sup>a</sup>	49.11±15.59 <sup>a</sup>
3	50.48±6.54 <sup>a</sup>	51.76±12.58 <sup>a</sup>	53.35±8.36 <sup>a</sup>	53.26±13.16 <sup>a</sup>	50.23±9.00 <sup>a</sup>	54.67±13.10 <sup>a</sup>
Mean	56.96±11.10 <sup>a</sup>	53.88±9.12 <sup>a</sup>	51.06±7.82 <sup>a</sup>	57.38±10.60 <sup>a</sup>	54.12±6.91 <sup>a</sup>	56.05±13.68 <sup>a</sup>
Fruit Diameter (mm)						
1	32.98±4.01 <sup>a</sup>	31.90±2.26 <sup>a</sup>	24.02±2.97 <sup>b</sup>	33.48±3.69 <sup>a</sup>	31.83±2.45 <sup>a</sup>	33.84±5.66 <sup>a</sup>
2	25.28±5.94 <sup>a</sup>	26.87±6.09 <sup>a</sup>	26.94±4.51 <sup>a</sup>	28.76±4.94 <sup>a</sup>	26.22±5.32 <sup>a</sup>	33.18±15.90 <sup>a</sup>
3	27.21±2.26 <sup>a</sup>	28.52±4.35 <sup>a</sup>	28.01±4.06 <sup>a</sup>	28.20±4.51 <sup>a</sup>	25.61±2.96 <sup>a</sup>	26.10±4.79 <sup>a</sup>
Mean	28.49±10.71 <sup>a</sup>	29.10±9.81 <sup>a</sup>	26.32±8.83 <sup>b</sup>	30.15±10.13 <sup>a</sup>	27.89±8.75 <sup>a</sup>	31.04±23.15 <sup>a</sup>
Fruit Weight (t ha <sup>-1</sup> )						
1	1.37±0.48 <sup>b</sup>	1.63±0.32 <sup>b</sup>	1.02±0.26 <sup>b</sup>	3.99±1.39 <sup>a</sup>	3.34±0.44 <sup>a</sup>	1.65±0.65 <sup>b</sup>
2	0.72±0.45 <sup>b</sup>	0.81±0.42 <sup>b</sup>	0.99±0.43 <sup>b</sup>	2.52±1.68 <sup>a</sup>	1.60±0.96 <sup>a</sup>	1.13±0.83 <sup>b</sup>
3	2.08±1.36 <sup>a</sup>	2.13±0.91 <sup>a</sup>	2.54±1.37 <sup>a</sup>	3.59±2.52 <sup>a</sup>	3.04±1.98 <sup>a</sup>	2.81±1.91 <sup>a</sup>
Total	4.17±1.02 <sup>c</sup>	4.57±0.81 <sup>c</sup>	4.56±1.1 <sup>c</sup>	10.10±1.98 <sup>a</sup>	7.98±1.48 <sup>ab</sup>	5.59±1.41 <sup>bc</sup>

### 3.5 Economic analysis of yields for different treatments

Treatments T3, T4, and T5 were profitable and recommendable with a BCR > 2 (Table). The most economically viable treatment was T3, with a profit rate (PR) of 601.66% and a BCR value of 7.02, which according to [31], a BCR greater than equal to 2 means at least 100% of the investment will be recovered from the yield. Treatment T2 had a negative PR of -32.14% and a BCR of 0.68. Thus, treatments T3, T4, and T5 can be popularized for the cultivation of okra. The results corroborate those of [9] wherein poultry manure had an observable effect on yield and was profitable and recommendable.

**Table 5: Economic analysis of the various treatments**

T	AY	EY	GR	FC	FTC	TEEY	RCF	TCF	MNR	B	C	PR
T	(Kgha <sup>-1</sup> )	(Kgha <sup>-1</sup> )	(FCFA)	(FCFA)	(FCFA)	(FCFA)	(FCFA)	(FCFA)	(FCFA)	(FCFA)	(FCFA)	(%)
T0	4,173.33	-	4,173,330	-	-	-	-	-	-	-	-	-
T1	4,572.91	399.58	4,572,909	210,000	30,000	270,000	11,475	281,475	399,579	1.42	41.96	
T2	4,555.33	382.00	4,555,333	420,000	60,000	540,000	22,950	562,950	382,003	0.68	32.14	
T3	10,098.33	5,925.00	10,098,333	630,000	90,000	810,000	34,425	844,425	5,925,003	7.02	601.66	

**Commented [A9]:** Change the format of table to landscape style so that it could be readable easily

	7,972.3	3,799.0	7,972,	840,00	120,00	120,	1,080,	45,9	1,125,	3,799,	3.	237
T4	6	3	364	0	0	000	000	00	900	034	37	.42
	5,588.0	1,414.6	5,588,	250,00		2,50	282.5	12,0	294,5	1,414,	4.	380
T5	0	7	000	0	30,000	0	00	06	06	670	80	.35

AY: average yield, EY: extra yield, GR: gross return, FC: fertilizer cost, FSC: fertilizer spreading cost, FTC: fertilizer transport cost, TEEY: total expenditure on extra yield, RCF: revenue cost of fertilizer, TCF: total cost of fertilizer, MNR: marginal net return, BCR: benefit to cost ratio, PR: profit rate. Unit cost price of NPK 12-14-19 was 500FKg-1. Unit selling price of okra at the farm gate at the time of harvest was 1000 FCFA per Kg<sup>1</sup>. Interest on investment was 4.25%.

#### 4. CONCLUSION

The main aim of this study was the evaluation of the effect of different rates of poultry manure on soil fertility and on the growth, yield, and economics of okra (*Abelmoschus esculentus* L. Moench) in Dschang, West Cameroon. Before treatment (T0), the soil was acidic, and had a low sum of exchangeable bases. The soil pH, the organic carbon, exchangeable Ca and K, and the CEC increased progressively with an increasing rate of poultry manure application, meanwhile it decreased Mg and Na. Treatment T3 (9 t ha<sup>-1</sup>) had the most effect on growth performance and yield parameters meanwhile treatment T5 and T2 had the least effect on growth and yield performance respectively. Economically, only treatments T3, T4, and T5 were profitable and recommendable for popularization, with a BCR>2. Treatment T3 was the most profitable with a BCR of 7.02 and a PR of 601.66% while T4 was the least profitable with a BCR of 0.68 and a PR of -32.14%. The results of this study will help to increase the production of okra sustainably by applying poultry manure at a rate of 9 t ha<sup>-1</sup> in Dschang, west highlands of Cameroon. Recommendations. Farmers in Western highlands can produce okra profitably and sustainably with 9 t ha<sup>-1</sup> of poultry manure.

#### REFERENCES

1. FAO. (2017). The future of food and agriculture: Trends and challenges. Food and Agriculture Organization of the United Nations.
2. FAOSTAT. (2021). Food and Agriculture Organization of the United Nations. Available: <http://www.fao.org/faostat/en/#data/QC>
3. Ministry of Agriculture and Rural Development. (2020). Annual Agricultural Statistics Report, Cameroon.
4. Adhikari A., & Piya A. (2020). Effect of Different Sources of Nutrient on Growth and Yield of Okra (*Abelmoschus esculentus* L. Moench). International Journal of Environmental & Agriculture Research, 6(1), 45-50.
5. Sanchez PA. (2002). Soil Fertility and Hunger in Africa. Science, 295(5562), 2019-2020.
6. Tankou CM, Shuweh JK, & Gam AT. (2020). Assessment of Grazing Characteristics and Effects on Livelihoods of Food Crop Farmers in Bui and Donga Mantung, North West Cameroon. International Journal of Research and Innovation in Social Science, IV(VI), 569-576.
7. Azinwi PT, Wotchoko P, Chotangui AH, Magha A, Kouankap NDG, Peghetmo MNM, Nkouathio DG, & Bitom D. (2019). Effect of Amending Acid Oxisols Using Basalt Dust, *Tithonia diversifolia* Powder and NPK 20-10-10 on Garlic (*Allium sativum*) Production in Bafut (Cameroon Volcanic Line). International Journal of Plant & Soil Science, 31(4), 1-18.

8. Henao Julio & Baanante Carlos (1999). Estimating Rates of Nutrient Depletion in Soils of Agricultural Lands of Africa. International Fertilizer Development Centre.
9. Azinwi PT, Wotchoko P, Kouankap NDG, Ndofor CNY, Nkouathio DG, & Bitom D. (2021). Comparative Effects of Basalt Dust, NPK 20-10-10 and Poultry Manure on Soil Fertility and Cucumber (*Cucumis sativus*) Productivity in Bafut (Cameroon Volcanic Line). *Earth Sciences*. 8(6), 323-334.
10. Ayele LA, Saidi N., & Sithole B. (2019). Biogas production from poultry manure: An overview. *Journal of Environmental Management*, 240, 107820.
11. Nguemtchoum M, Tchienkouo M, Moundjong M, Hamadou I, & Youmbi E. (2014). Influence of co-composting with bulking agents on the physico-chemical properties of poultry manure. *International Journal of Biological and Chemical Sciences*, 8(5), 2320-2332.
12. Temgoua E, Ntangmo T, Pfeifer HR, & Njine T. (2015). Teneurs en éléments majeurs et oligoéléments dans un sol et quelques cultures maraîchères de la ville de Dschang, Cameroun. *African Crop Science Journal*, 23(1).
13. Beernaert F and Bitondo D. (1992) Simple and Practical Methods to Evaluate Analytical Data of Soil Profiles, Belgian Cooperation, University of Dschang.
14. Wenyonu DK, Norman JC, & Amisah N. (2011). Influence of heading back and intra-row spacing on the growth, flowering, and harvesting of okra (*Abelmoschus esculentus* (L.) Moench). *Ghana Journal of Horticulture*, 9(79), 79-94.
15. Van Reeuwijk IP. (1992). Procedures for soil Analysis. Technical paper No. 9 (3rd Inst. Soil reference and information centre, Netherlands. Pp. 75.
16. Olmstead LB, Alexander LT, Middleton HE. (1930). A Pipette Method of Mechanical Analysis of Soils based on Improved Dispersion Procedure. United States Department of Agriculture Technical Bulletin, 170, 1-22.
17. Olsen SR, & Sommers LE. (1982). Phosphorus. Methods of soil analysis: Chemical and Microbiological Properties, part 2. 2nd ed. Agronomy Monographs No. 9. Klute (ed). ASA and Soil Science. Society of America, Madison WI, 403-430.
18. Bremner JM, & Mulvaney CS. (1982). Nitrogen—Total. In A. L. Page (Ed.), *Agronomy Monographs* 1(9), 595–624. Available: <https://doi.org/10.2134/agronmonogr9.2.2ed.c31>
19. Thomas GW. (1982). Exchangeable Cations. *Agronomy Monographs*, 1(9), 159–165. Wiley. <https://doi.org/10.2134/agronmonogr9.2.2ed.c9>
20. Ruben A, Ayeni LS, and Ogunlade MO. (2022). Effect of Poultry Manure on Soil Chemical Properties, Growth and Yield of Yam (*Dioscorea rotundata*) in Southwestern Nigeria. *Journal of Agriculture and Food Research*, 6, 100189.
21. Ayeni LS and Adeleye EO. (2011). Soil Nutrient Status and Nutrient Interactions as Influenced by Poultry Manure and NPK Fertilizer. *International Journal of Soil Science*, 6(1), 34-43.
22. Adeleye EO, Ayeni LS, and Ojeniyi SO. (2010). Effect of Poultry Manure on Soil Physico-chemical Properties, Leaf Nutrient Contents and Yield of Yam (*Dioscorea rotundata*) on Alfisol in Southwestern Nigeria. *Journal of American Science*, 6(10), 871-878.
23. Ogunlade MO, Adeyemi EA, and Ojeniyi SO. (2011). Effect of Poultry Manure on Soil Physical Properties, Nutrient Status, Growth and Yield of Coconut (*Cocos nucifera* L.). *Nigerian Journal of Soil Science*, 21(1), 42-49.
24. Adeyemo AJ and Ayeni LS. (2010). Effect of Organic Manure on Soil Physico-chemical Properties and Nutrient Uptake of Maize (*Zea mays*) Grown in a Humid Environment. *International Journal of Agricultural Research*, 5(11), 653-662.

25. Omolayo FO, Ayodele OJ, Fasina AS, Godonu K. (2011). Effects of poultry manure from different sources on the growth and marketable yield of leaf amaranth (*Amaranthus cruentus* (hybridus) L) Amaranthaceae. *International Research Journal of Agricultural Science and Soil Science*, 1(2), 29-34.
26. Ewulo BS, Ojeniyi SO, & Akanni DA. (2008). Effect of poultry manure on selected soil physical and chemical properties, growth, yield and nutrient status of tomato. *African Journal of Agricultural Research*, 3(9), 612-616.
27. Aluko OB, Oyedele DJ (2005). Influence of organic incorporation on changes in selected soil physical properties during drying of Nigerian alfisols. *Journal of Applied Science*, 5, 357-362.
28. Fagwalawa LD, & Yahaya SM. (2016). Effect of Organic Manure on the Growth and Yield of Okra. *Imperial Journal of Interdisciplinary Research*, 2(3), 130-133.
29. Salako FK (2008) Effect of tillage, *Mucuna pruriens* and poultry manure on maize growth on physically degraded alfisols in Abeokuta, southwestern Nigeria. *Nigeria Journal of Soil Science*, 18, 10-21.
30. Ano AO and Agwu JA. (2006) Effect of animal manures on selected soil properties: II. Nitrogen, Potassium, and Phosphorus. *Nigerian Journal of Soil Science* 16: 145- 150.
31. Wossink GA, Van Kooten GC, & Peters GH. (Eds.). (2018). Economics of agro-chemicals: An International Overview of use patterns, Technical and Institutional Determinants, Policies and Perspectives: Selected Papers of the Symposium of the International Association of Agricultural Economists held at Wageningen, the